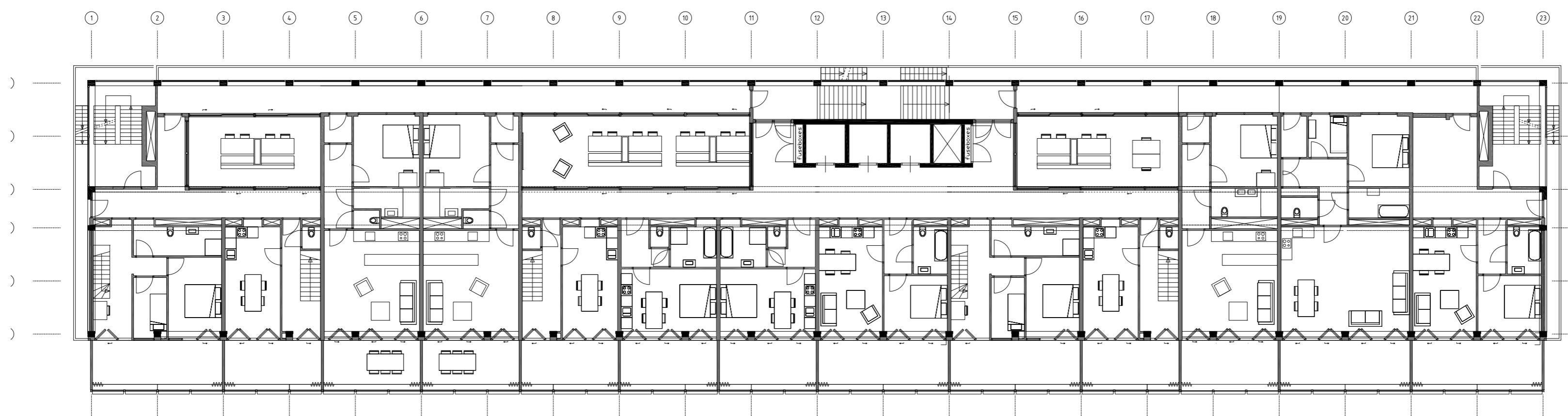
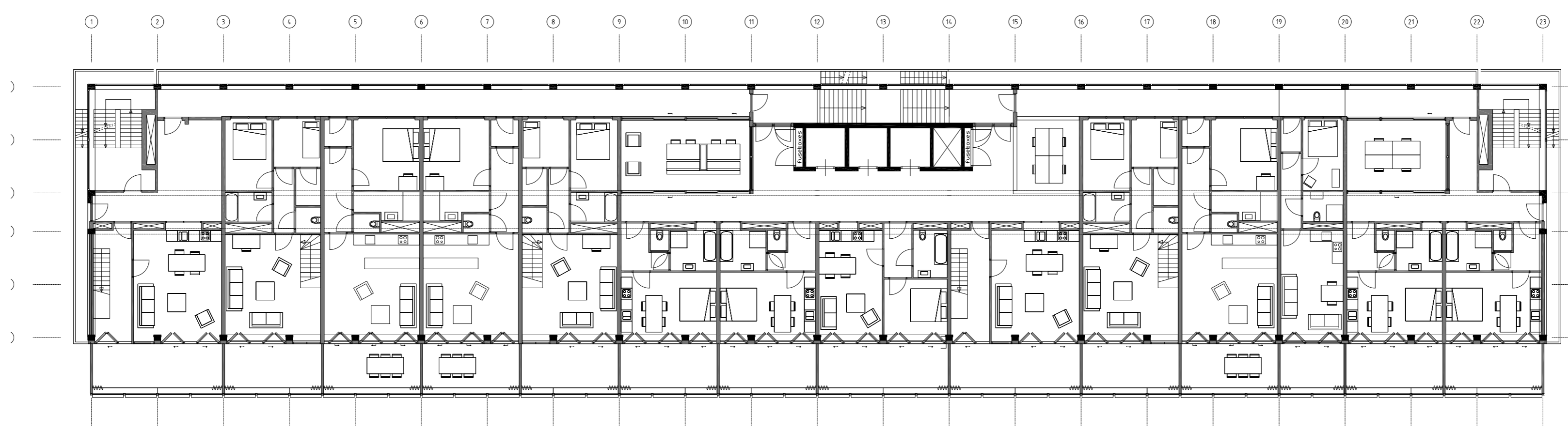


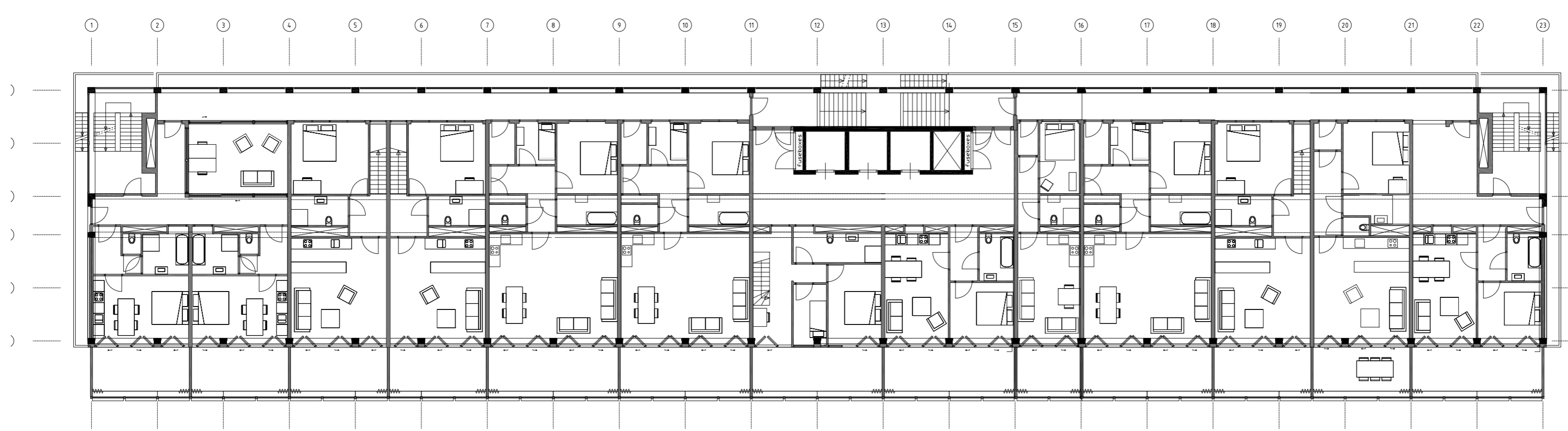
Level 8 (Roof)  
30120 mm



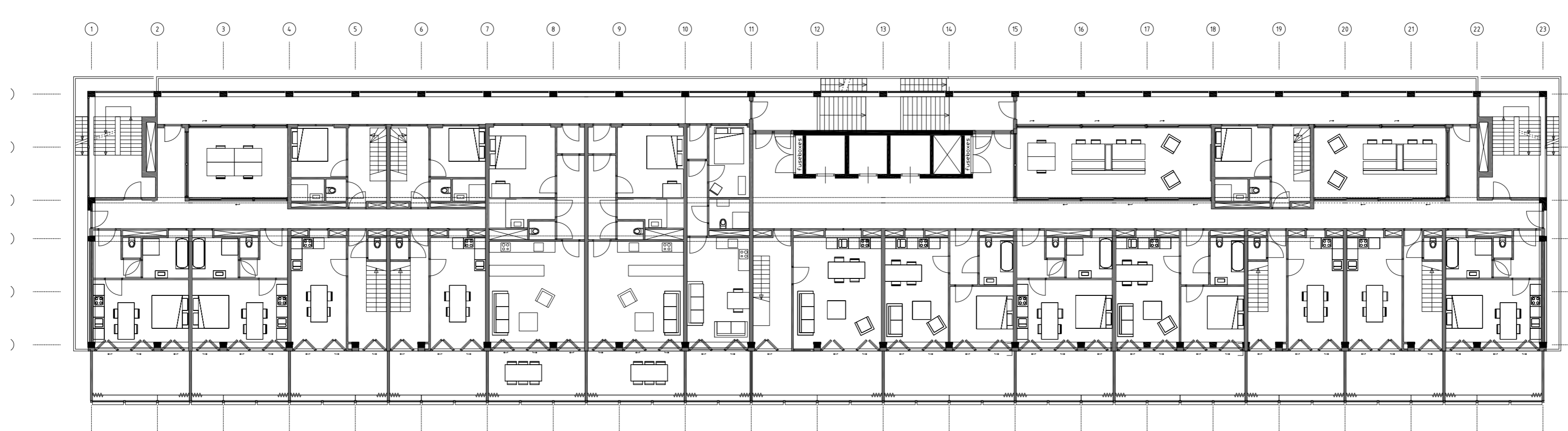
Level 7  
26720 mm



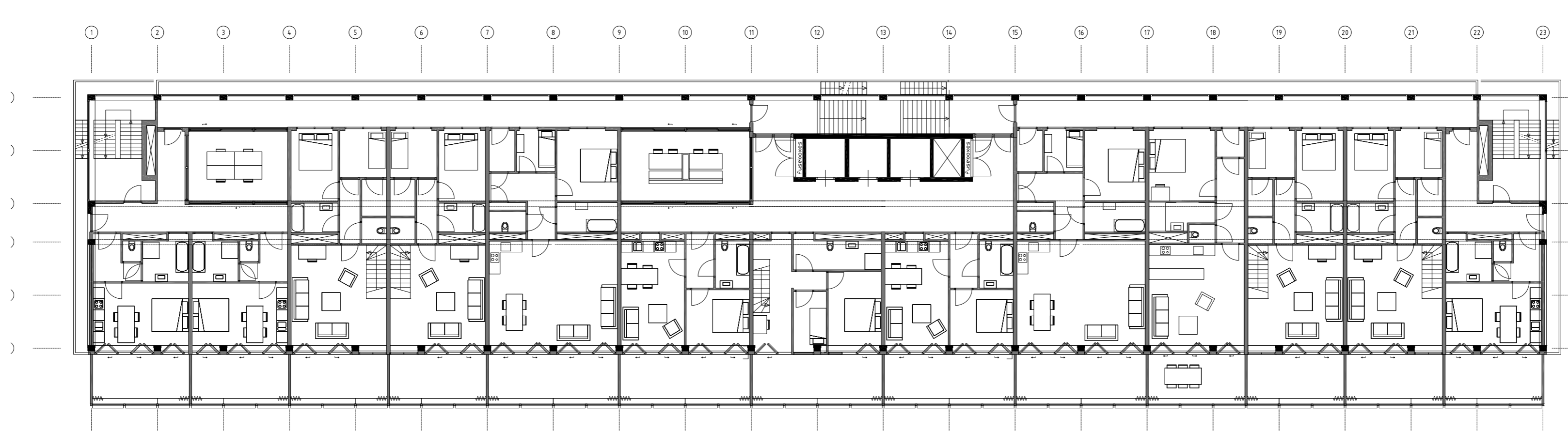
Level 6  
23320 mm



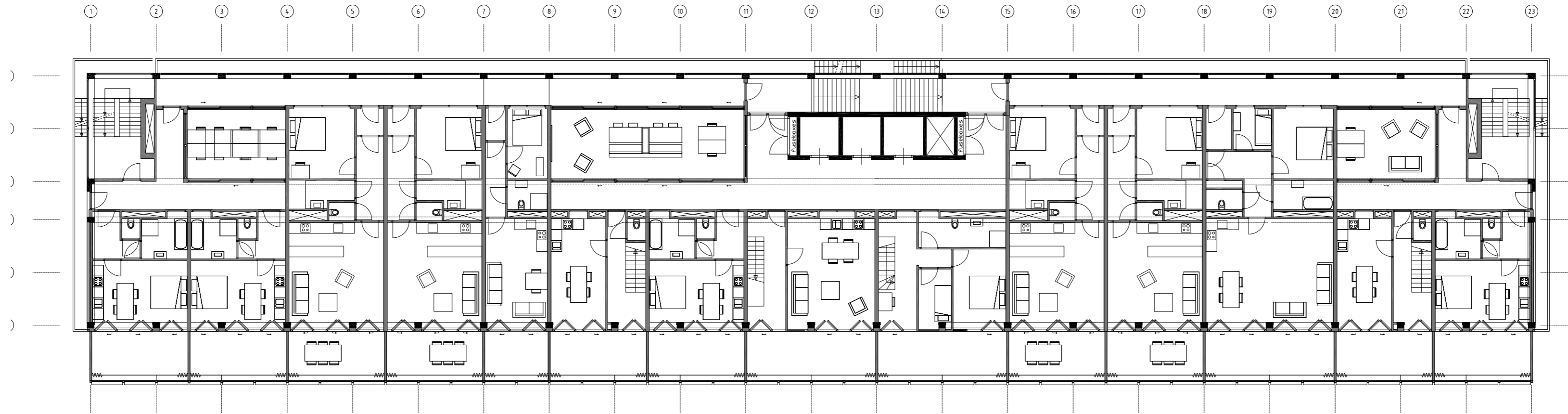
Level 5  
19920 mm



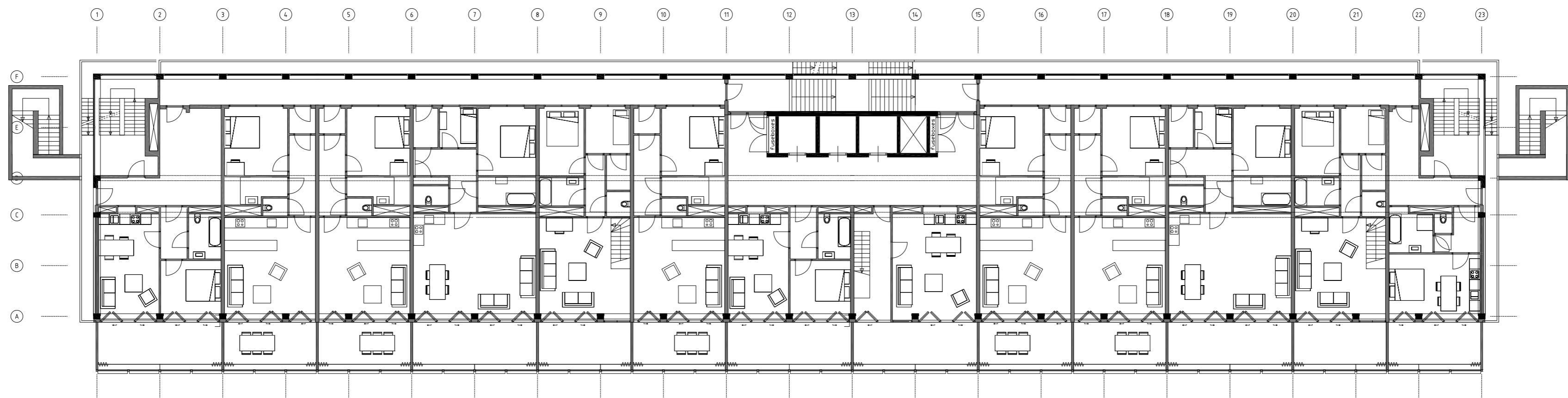
Level 4  
16520 mm



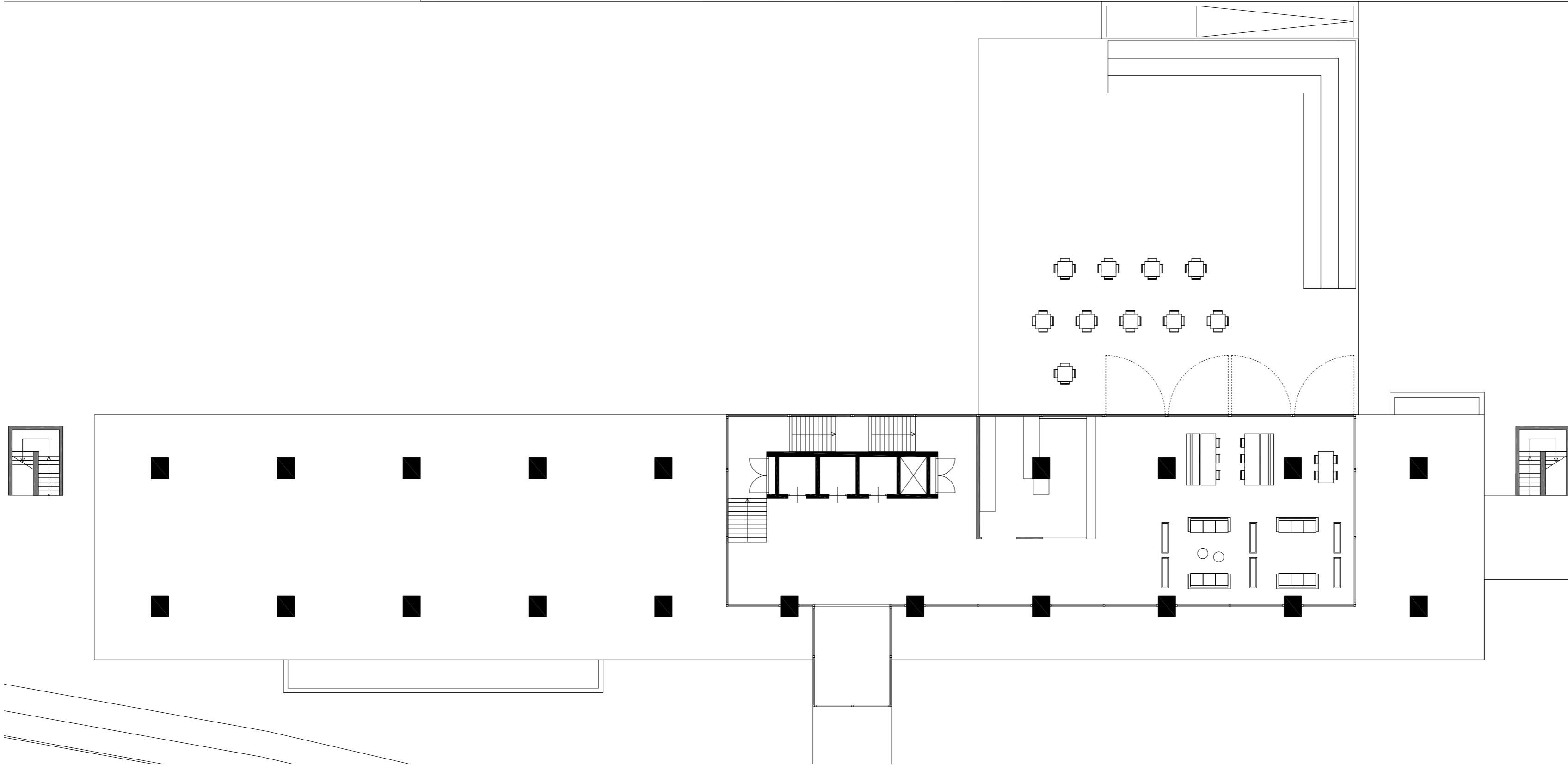
Level 3  
13120 mm



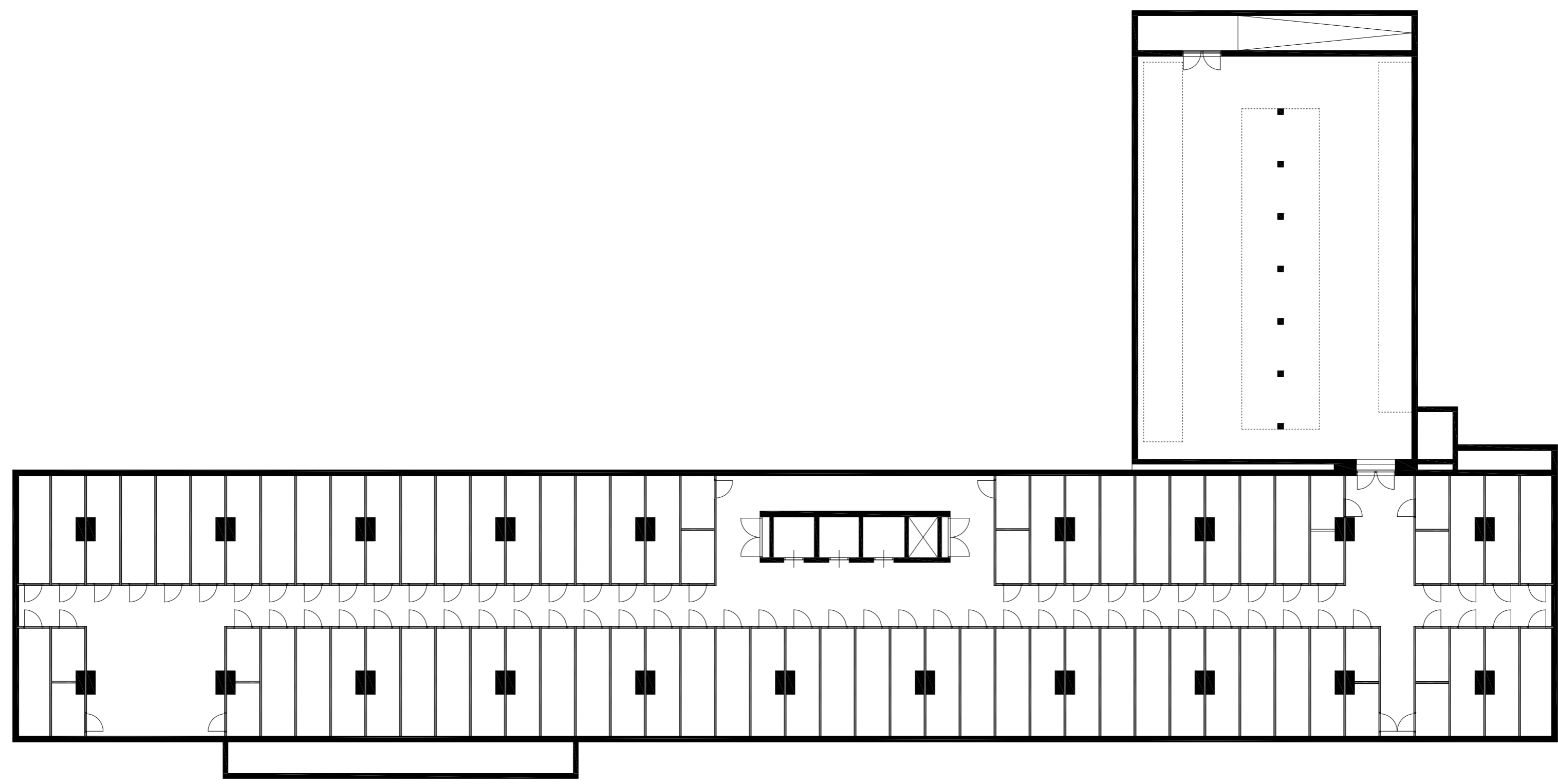
Level 2  
9720 mm



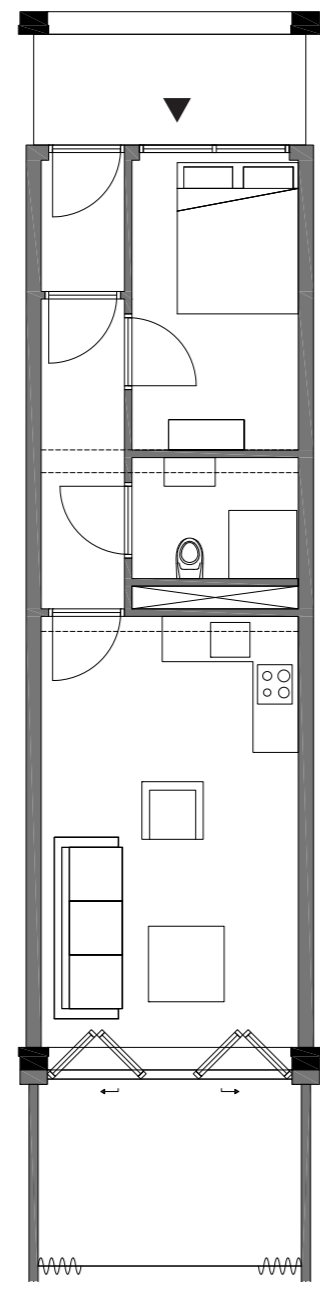
Level 1  
6320 mm



Level 0  
(Ground floor)  
00 mm

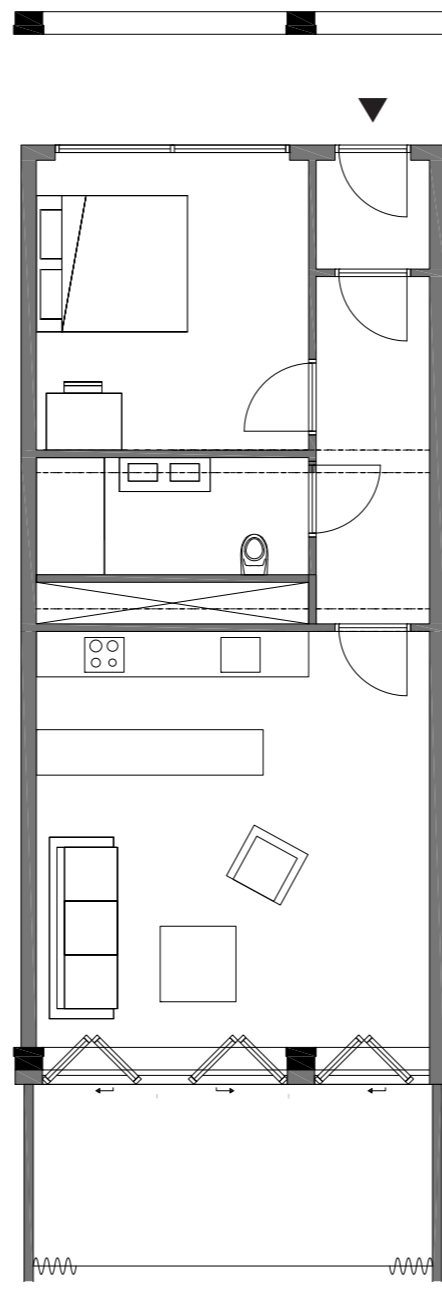


Level -1  
(Basement)  
-3060 mm



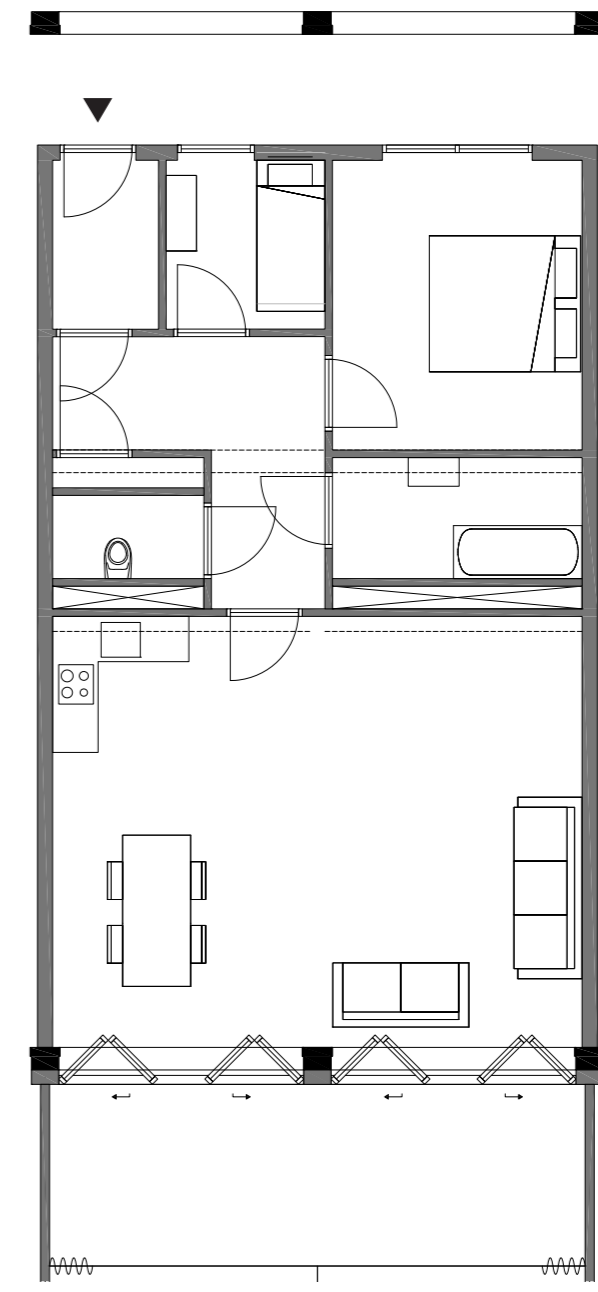
Full length

3,6 m wide  
43 m<sup>2</sup>  
5x present



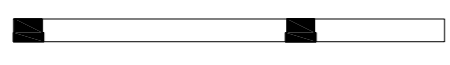
Full length

5,4 m wide  
65 m<sup>2</sup>  
16x present



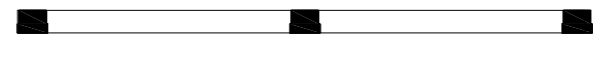
Full length

7,2 m wide  
86 m<sup>2</sup>  
10x present



Apartment

5,4 m wide  
31 m<sup>2</sup>  
18x present

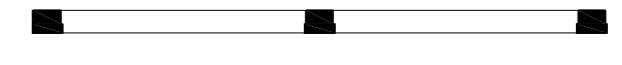


Apartment

7,2 m wide  
42 m<sup>2</sup>  
11x present

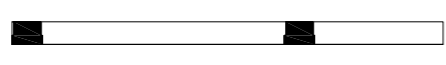


Maisonette  
lower floor

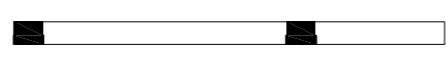


Maisonette  
upper floor

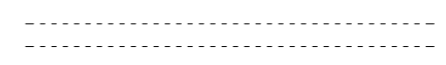
7,2 m wide  
88 m<sup>2</sup>  
5x present



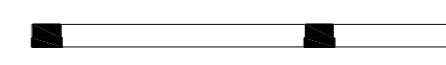
'Tetris' apartment A  
lower floor



'Tetris' apartment A  
upper floor



'Tetris' apartment B  
lower floor



'Tetris' apartment B  
upper floor

5,4 m wide  
96 m<sup>2</sup>  
12x present

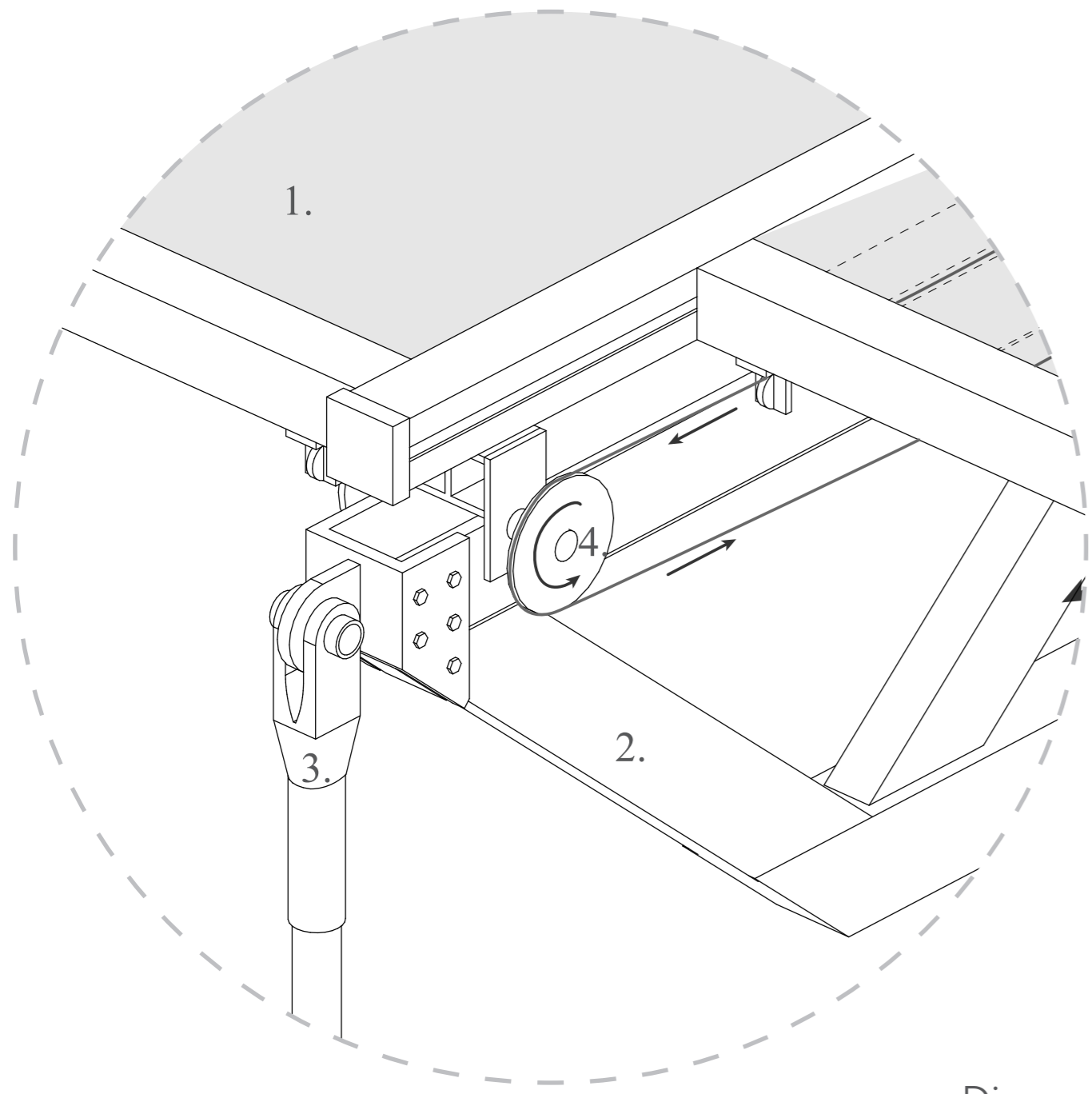
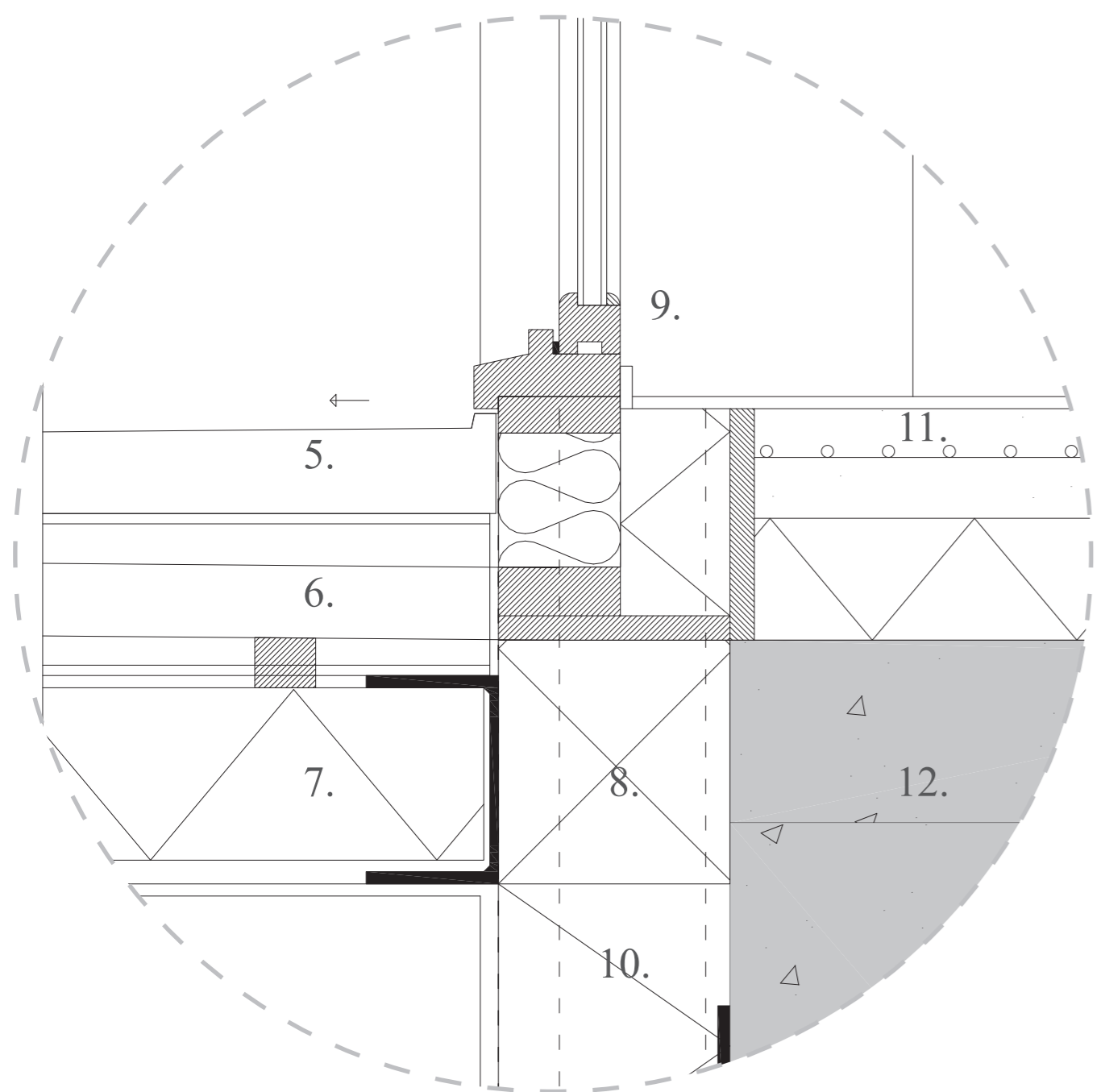
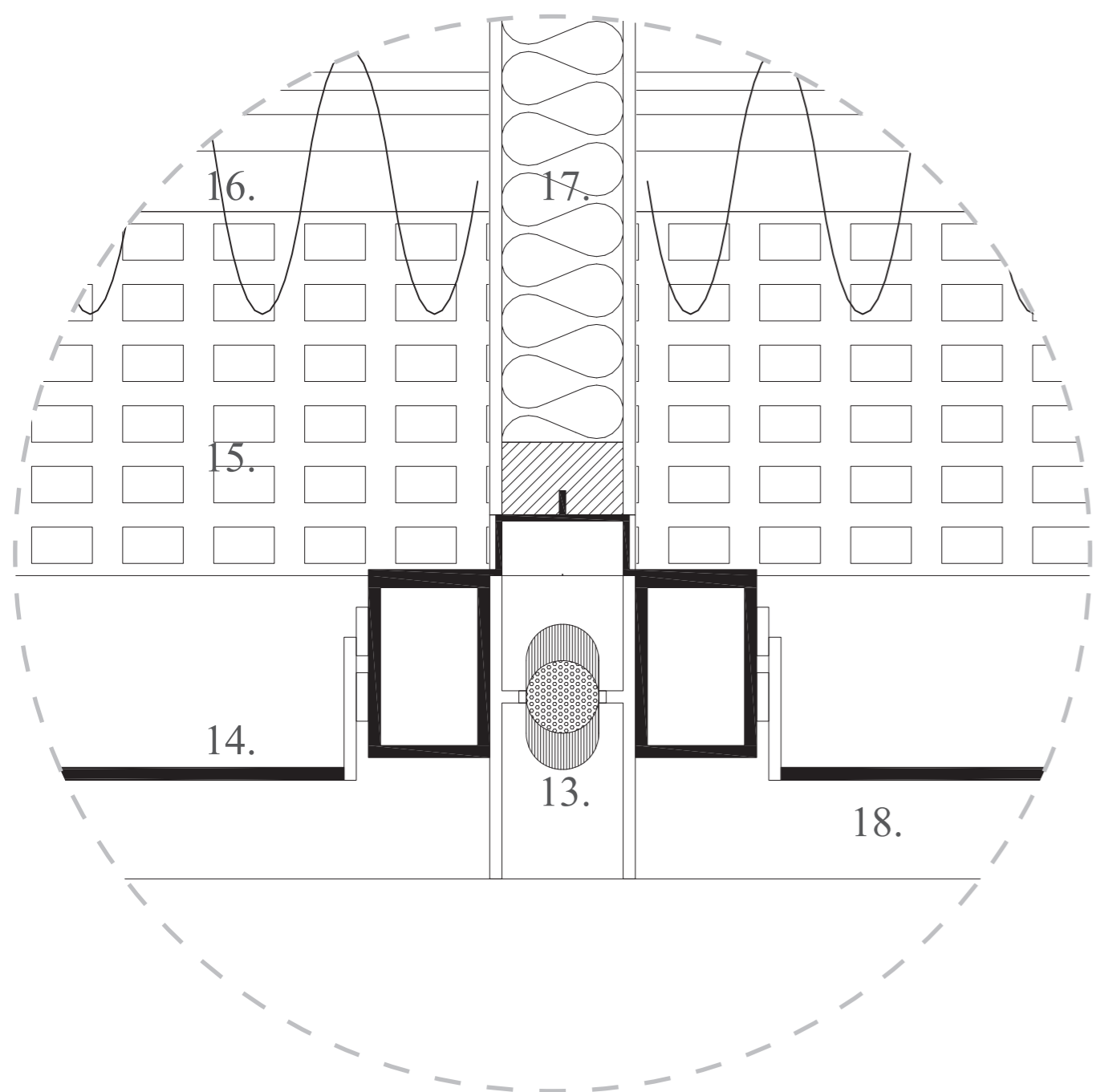


Diagram A  
Connection truss - cables

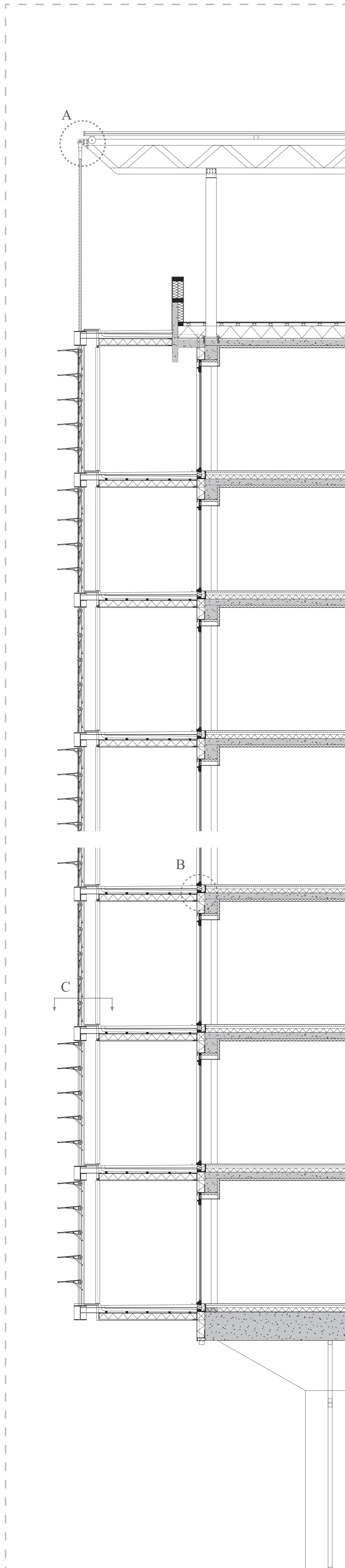


Detail B  
1:5

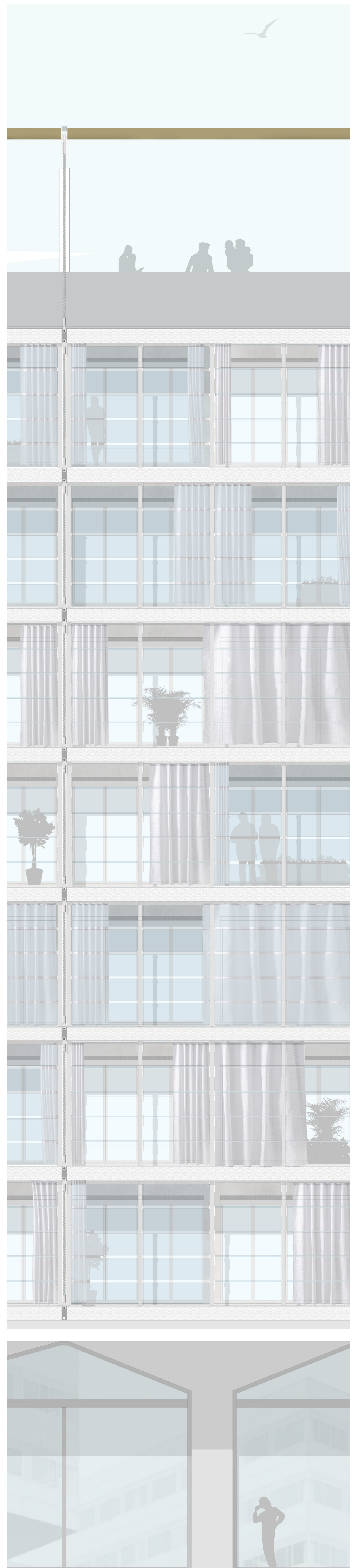


Detail C  
1:5

- |   |                                     |
|---|-------------------------------------|
| 1. Horizontal mesh screen (movable)               | 11. Floorheating (40 + 50mm mortar) |
| 2. Steel lattice girder 850 x 120mm               | 12. Existing concrete structure     |
| 3. Cable connector                                | 13. Steel cable 42mm                |
| 4. Motorized screening                            | 14. Glass horizontal louvres        |
| 5. Cement balcony floor                           | 15. Steel grate 3600 x 300mm        |
| 6. Drainage (between steel HEA 140; 1800mm apart) | 16. Curtains                        |
| 7. Insulation, acoustic                           | 17. Balcony divider                 |
| 8. Isokorf 190x 200mm                             | 18. Steel Beam; HEA 360             |
| 9. Timber folding doors                           |                                     |
| 10. Insulation 190mm                              |                                     |



Section South Facade  
1:50



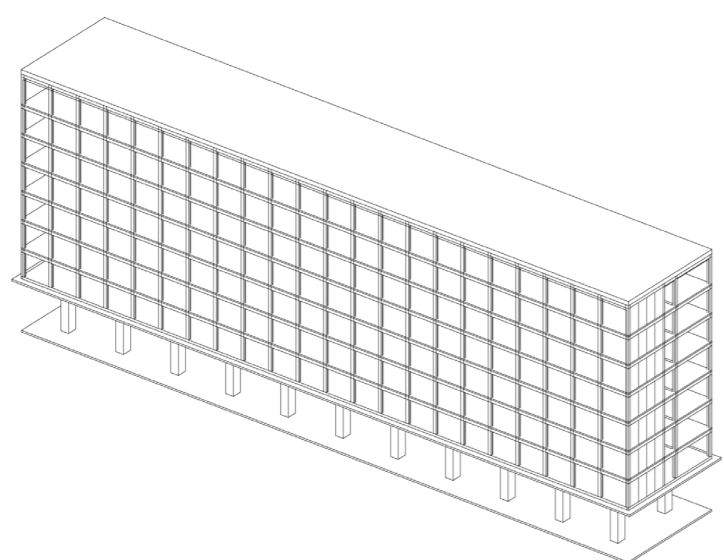
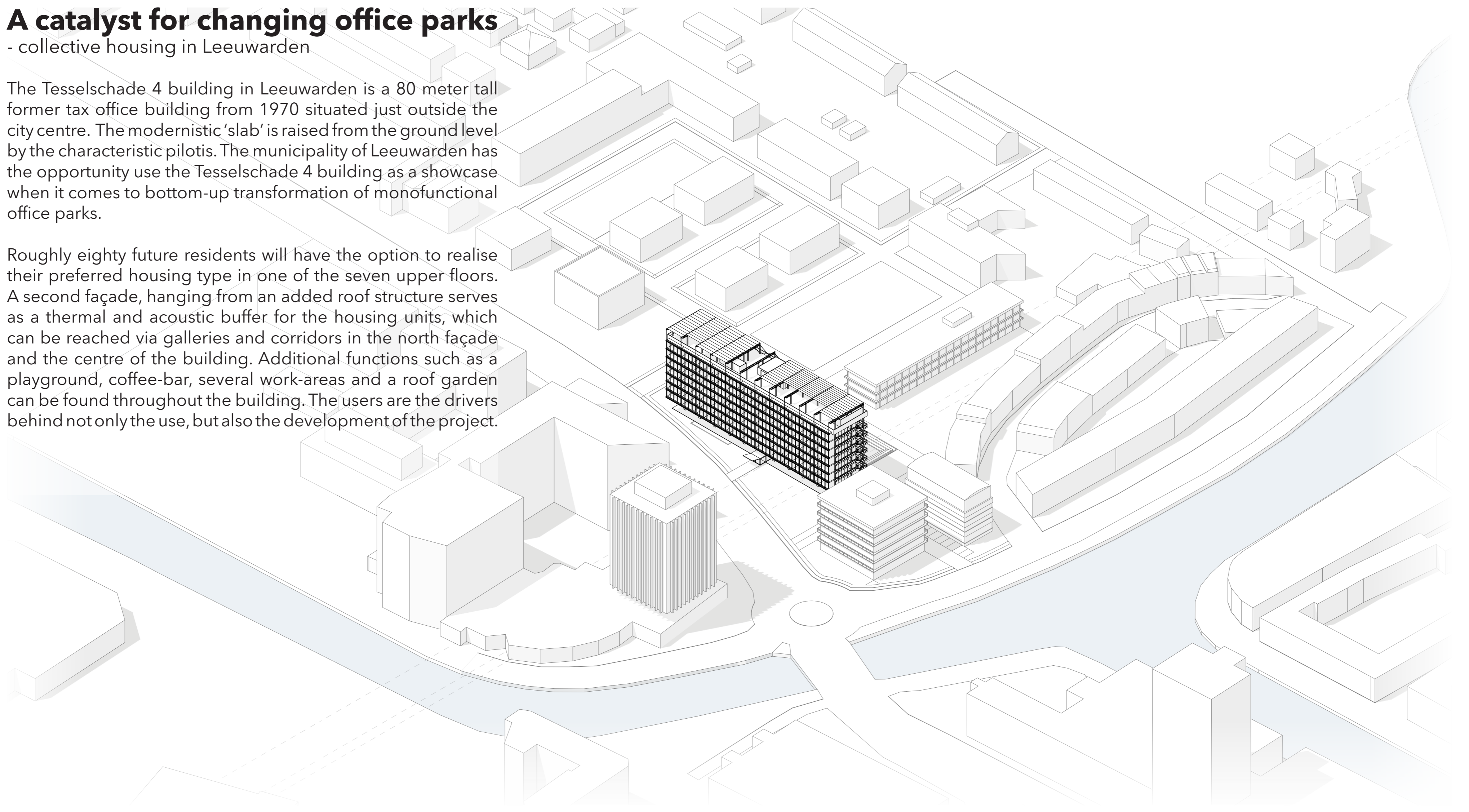
Elevation South facade  
1:50

# A catalyst for changing office parks

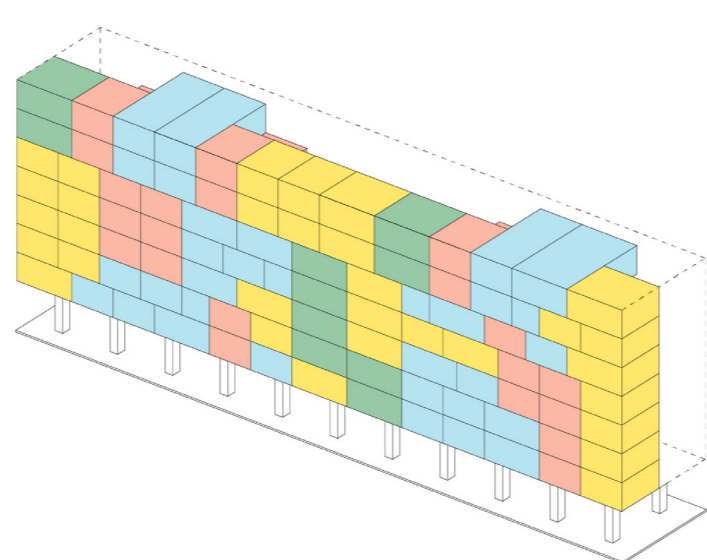
- collective housing in Leeuwarden

The Tesselschade 4 building in Leeuwarden is a 80 meter tall former tax office building from 1970 situated just outside the city centre. The modernistic 'slab' is raised from the ground level by the characteristic pilotis. The municipality of Leeuwarden has the opportunity use the Tesselschade 4 building as a showcase when it comes to bottom-up transformation of monofunctional office parks.

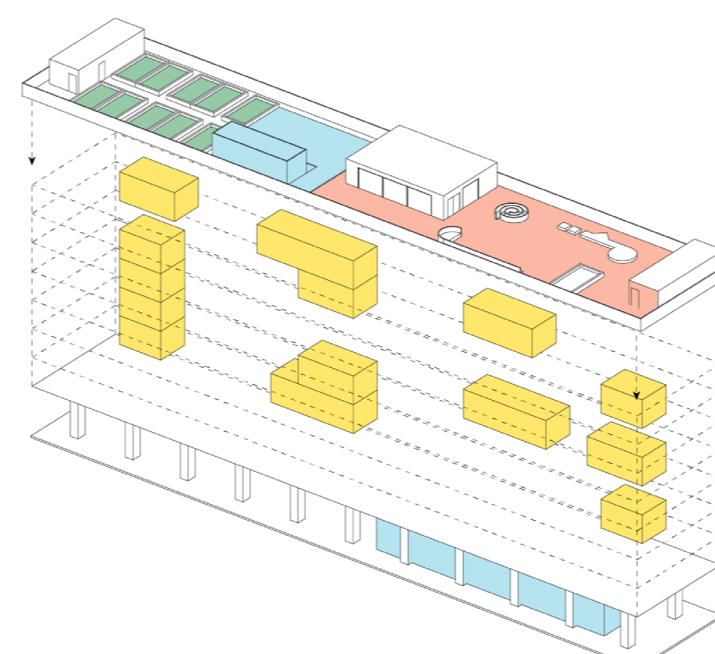
Roughly eighty future residents will have the option to realise their preferred housing type in one of the seven upper floors. A second façade, hanging from an added roof structure serves as a thermal and acoustic buffer for the housing units, which can be reached via galleries and corridors in the north façade and the centre of the building. Additional functions such as a playground, coffee-bar, several work-areas and a roof garden can be found throughout the building. The users are the drivers behind not only the use, but also the development of the project.



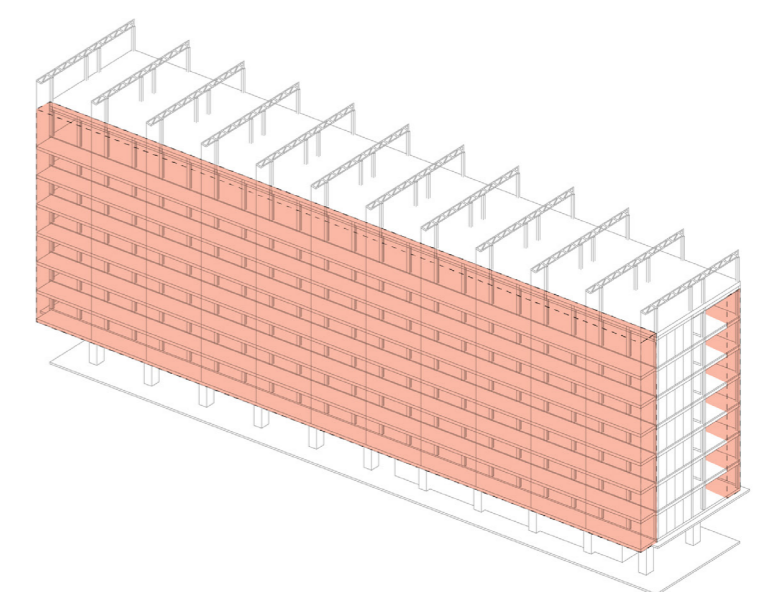
Existing concrete structure



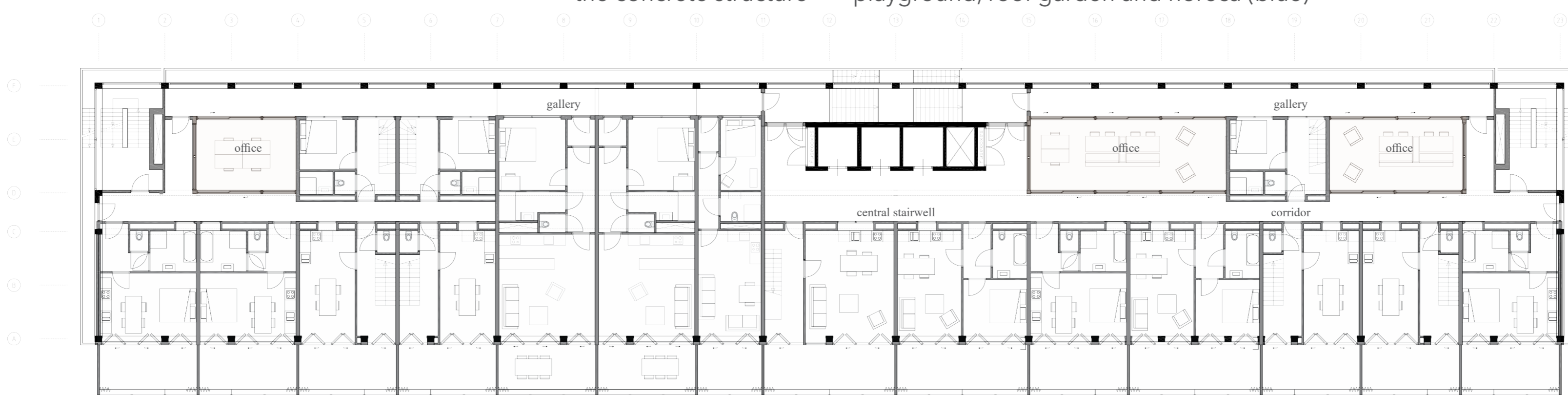
Several housing typologies added within the concrete structure



Additional functions added: offices (yellow), playground, roof garden and horeca (blue)



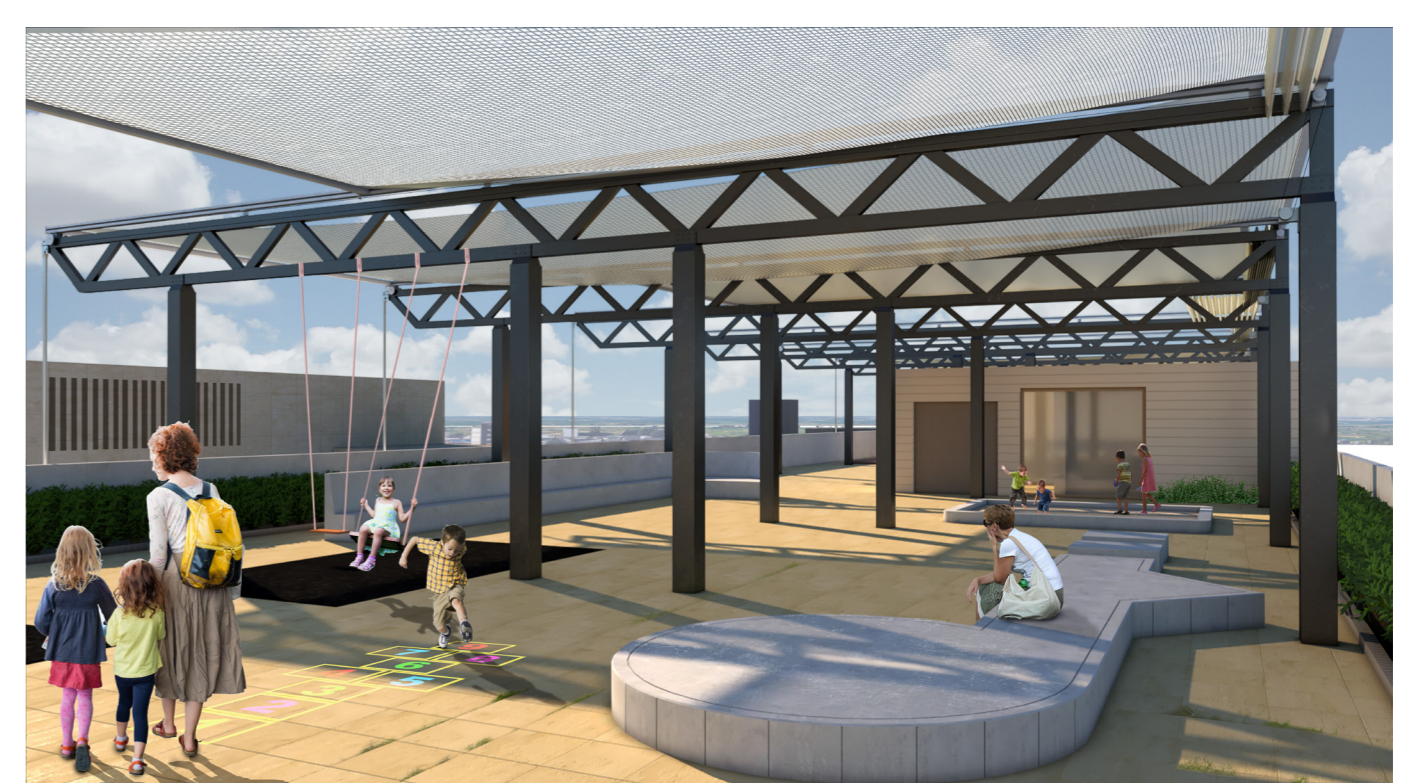
Balconies and galleries as thermal and acoustic buffers



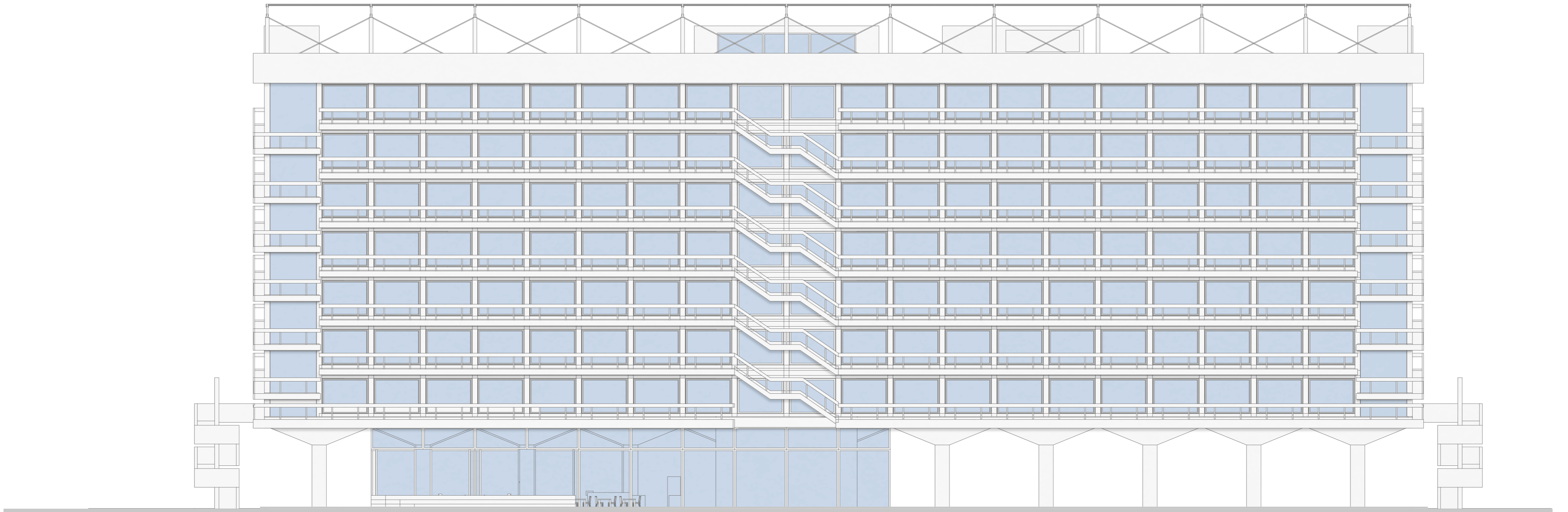
Floorplan 04  
typical floor with offices and housing  
1:200



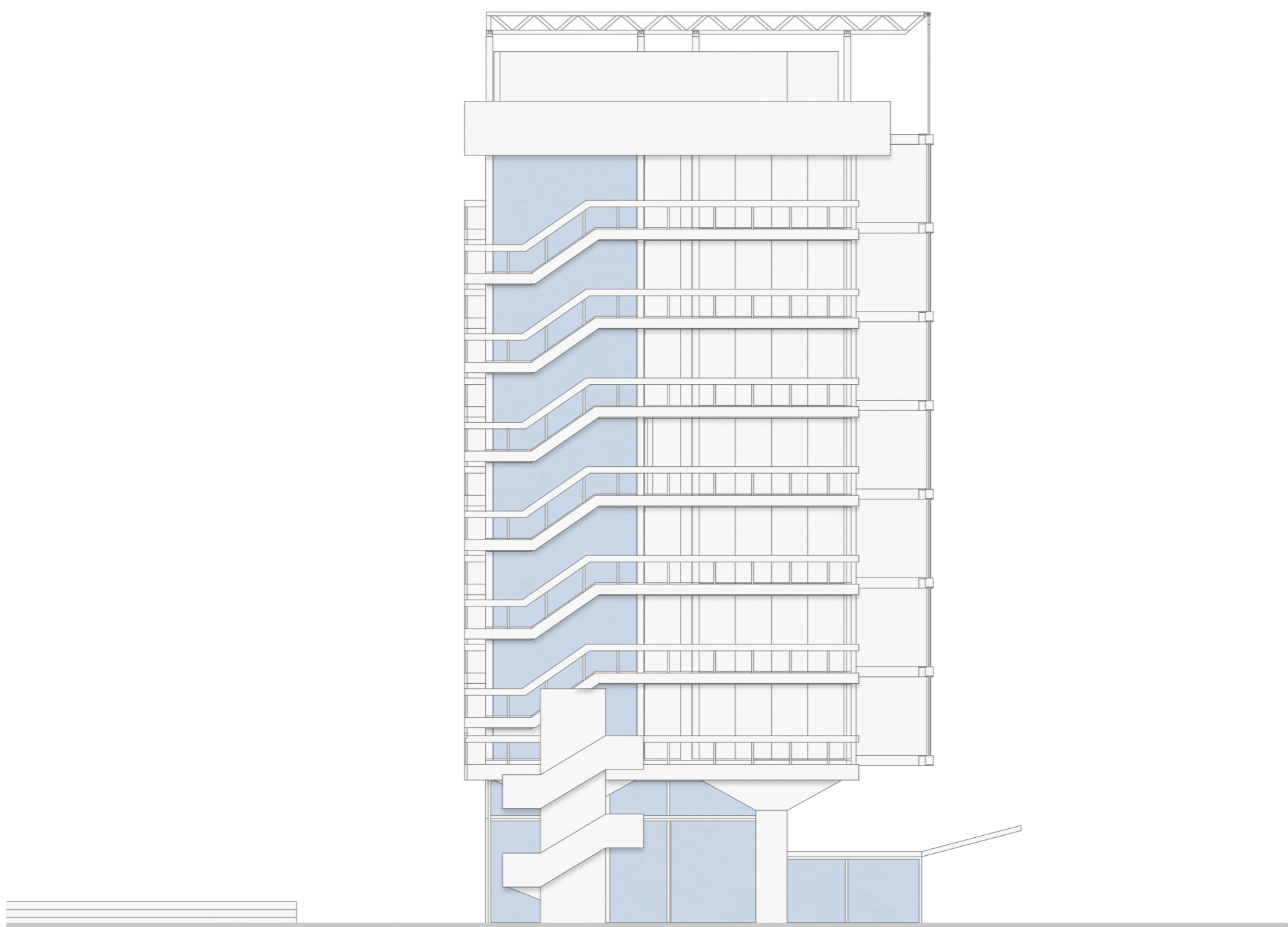
Visualisation - South facade



Visualisation - Balcony  
Visualisation - Roof



Elevation North  
1:200



Elevation West  
1:200



Elevation East  
1:200



Elevation South  
1:200