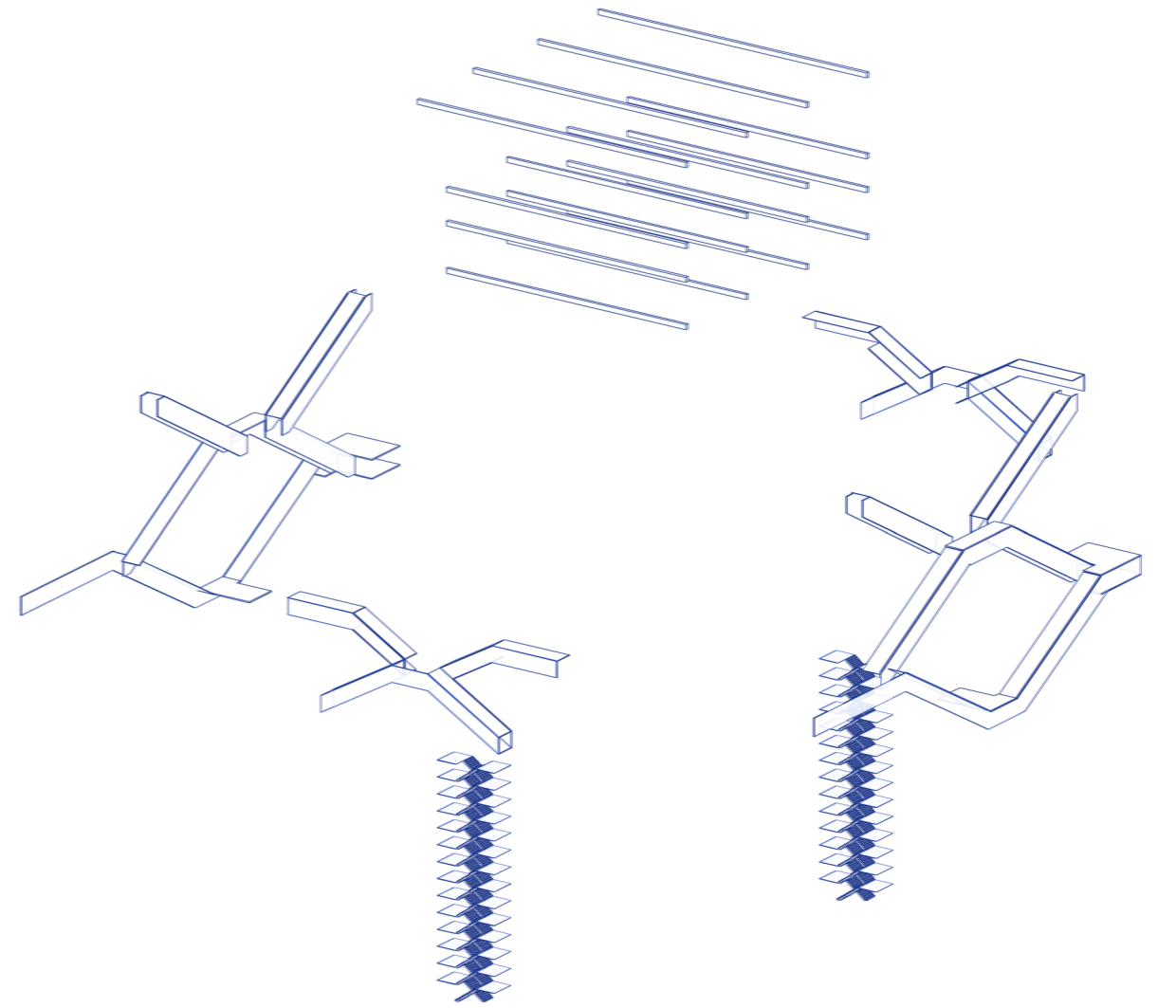
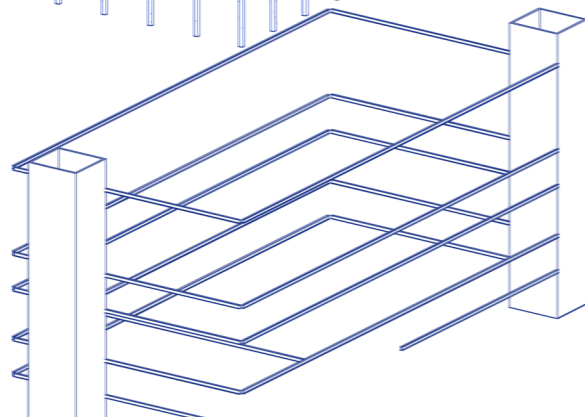
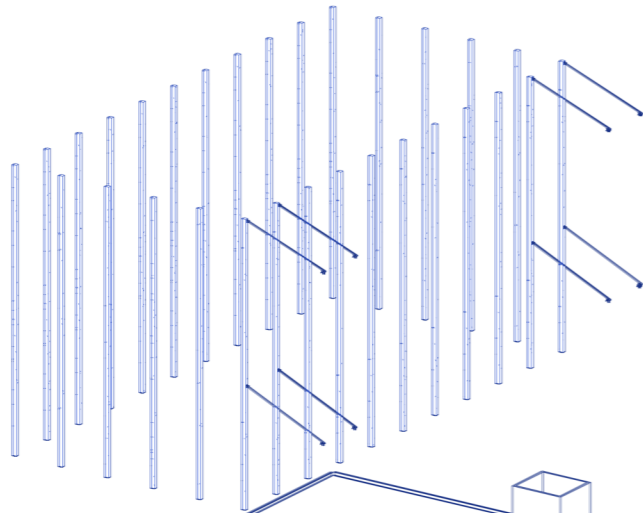
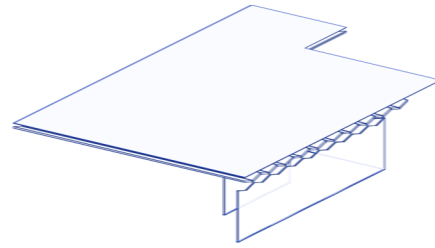
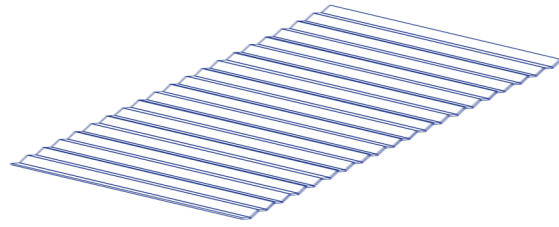
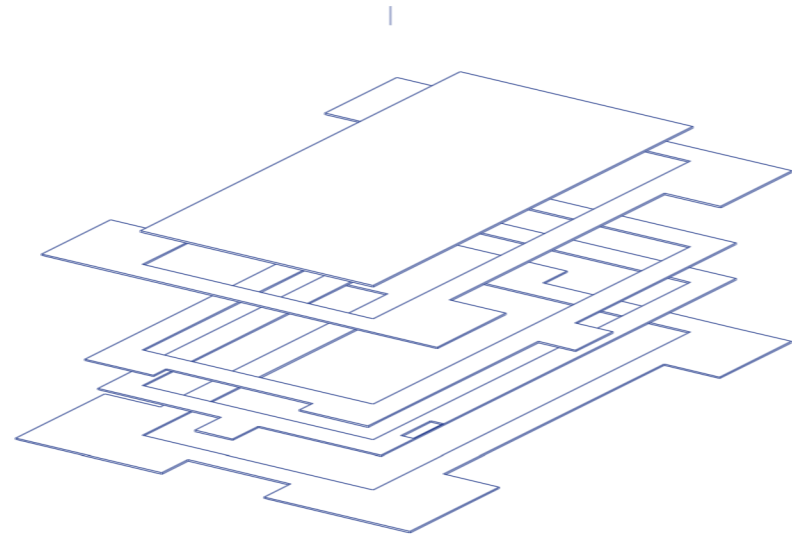


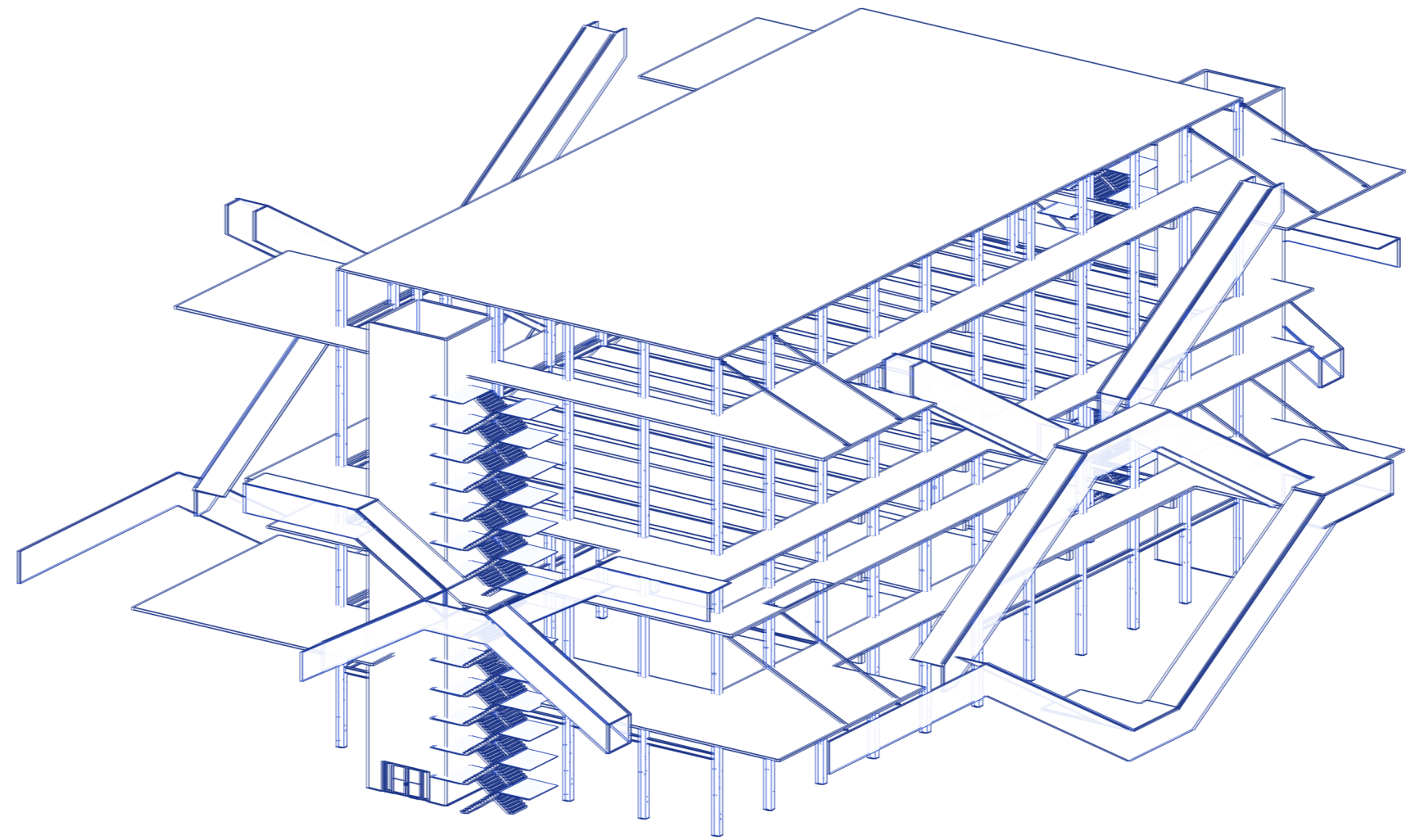
IS A MUSIC BUILDING FOR EVERYONE, **A MARVEL?**

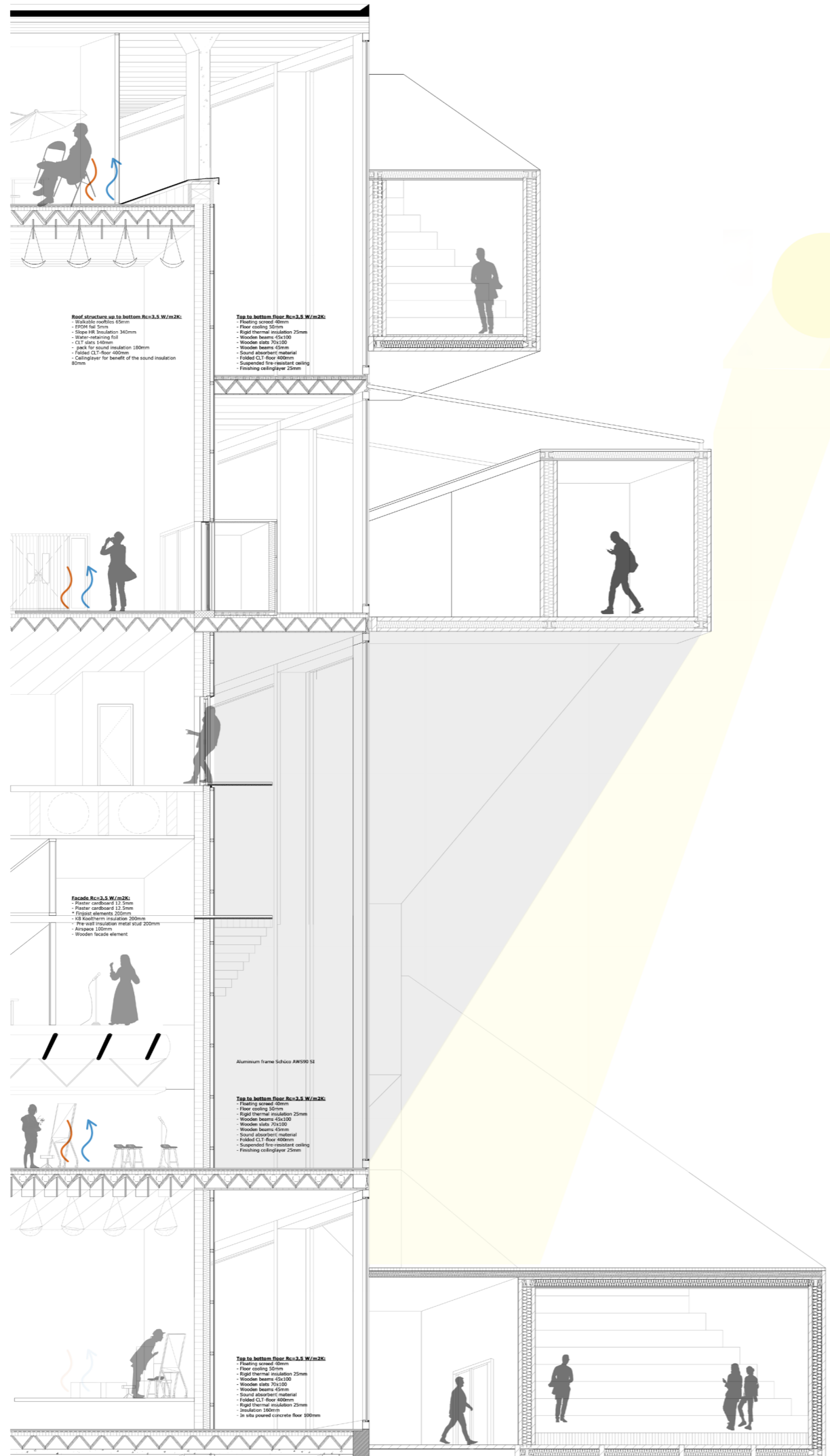
---

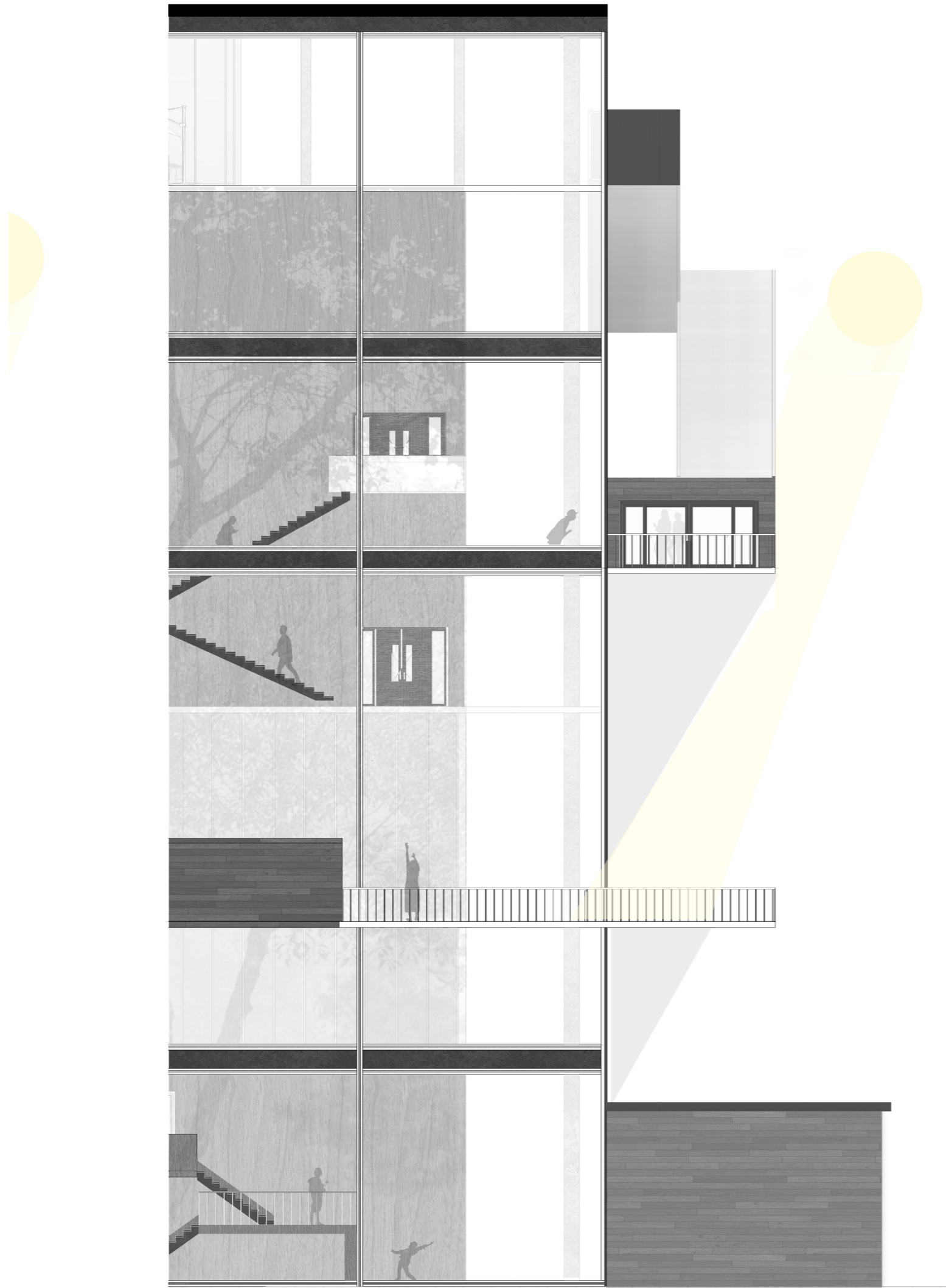
---

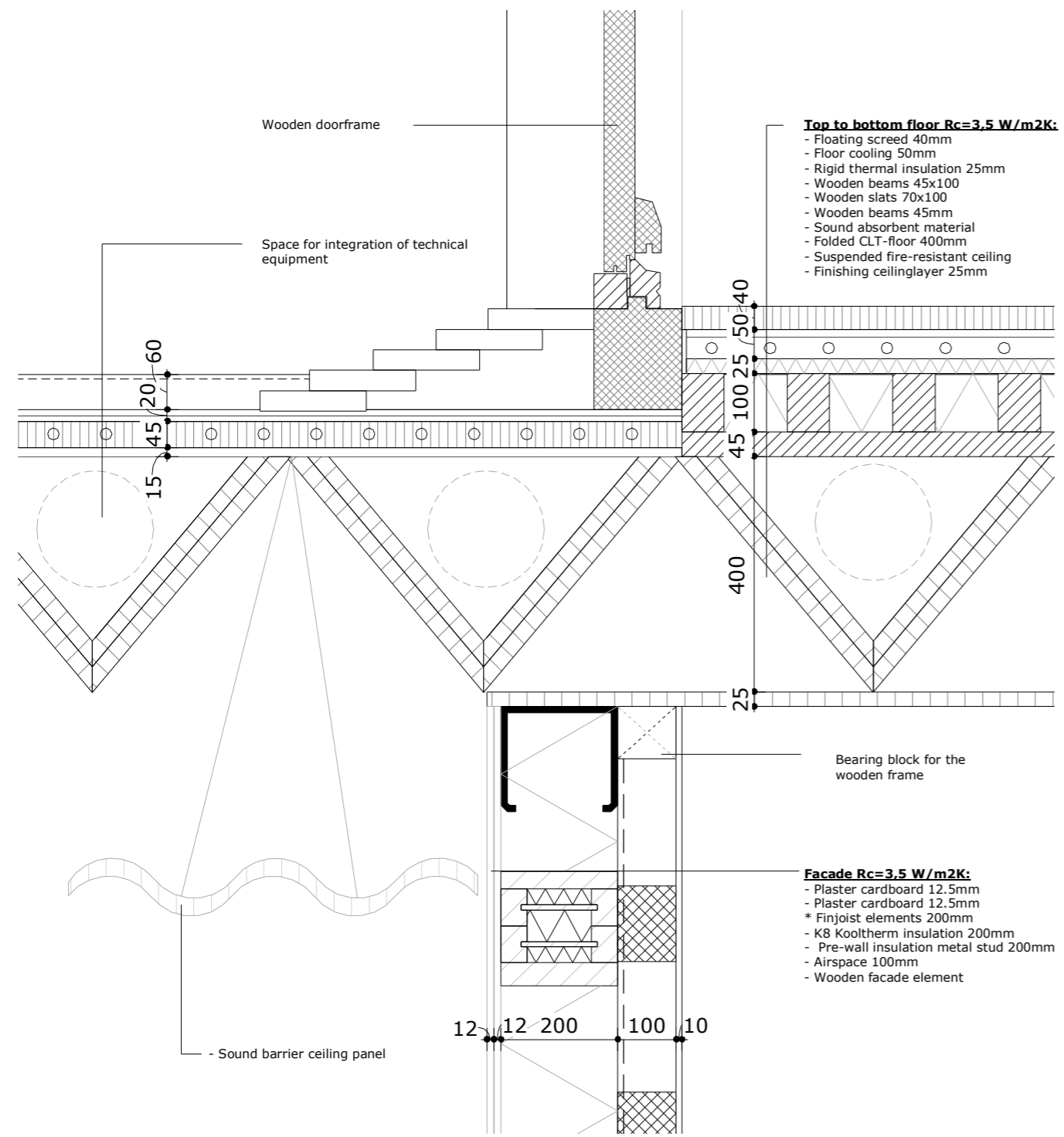
CONSTRUCTION DETAILREPORT

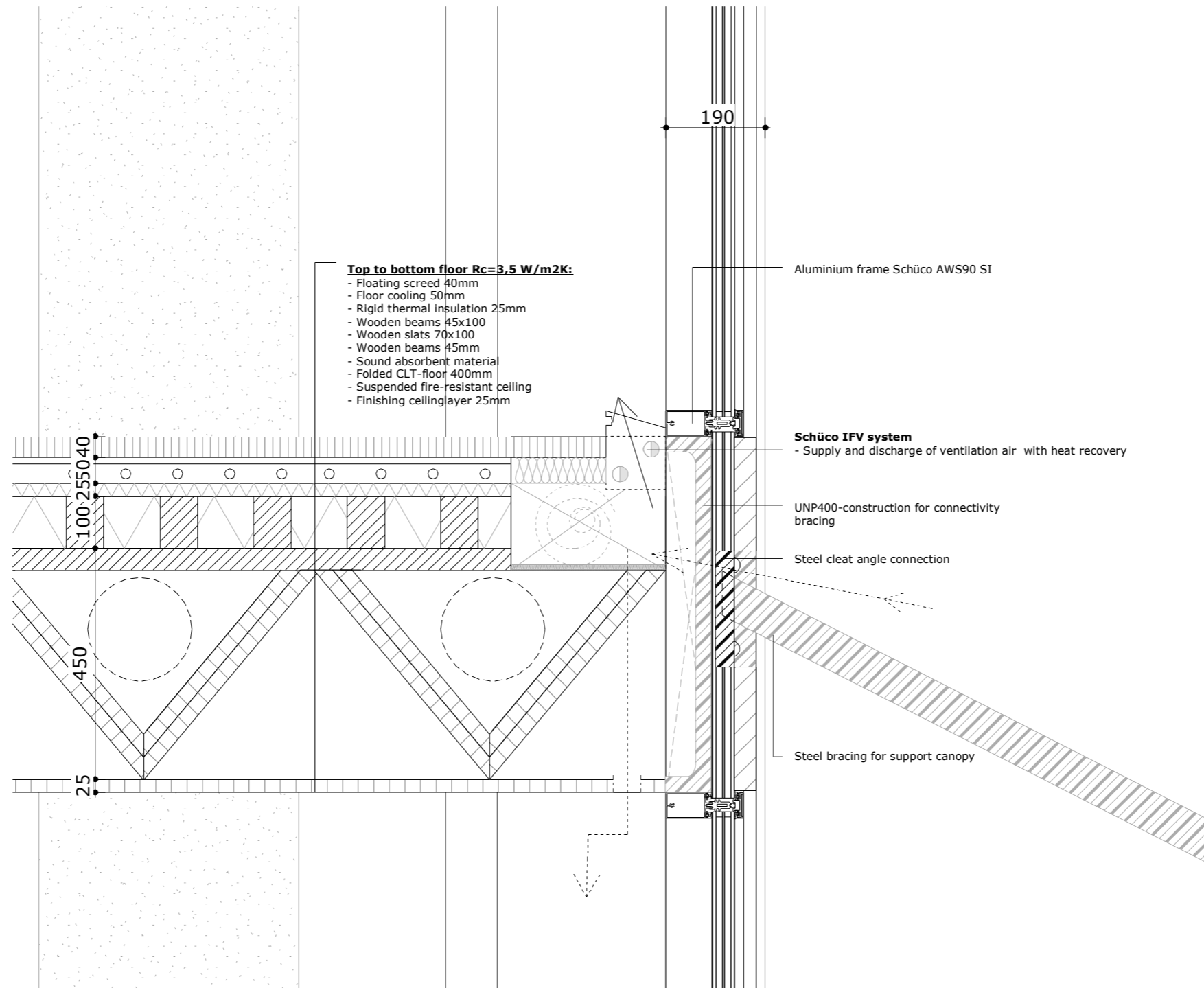


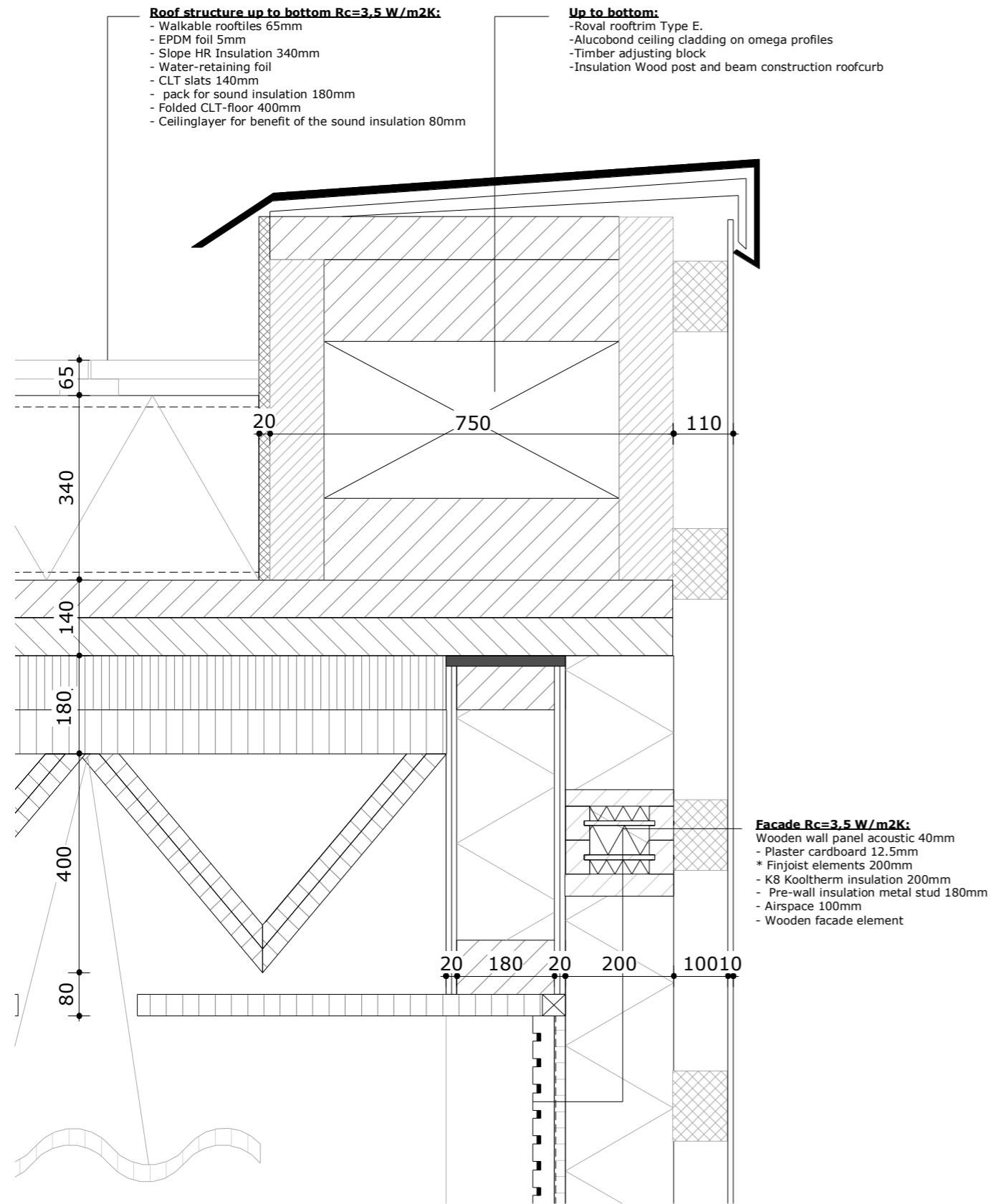




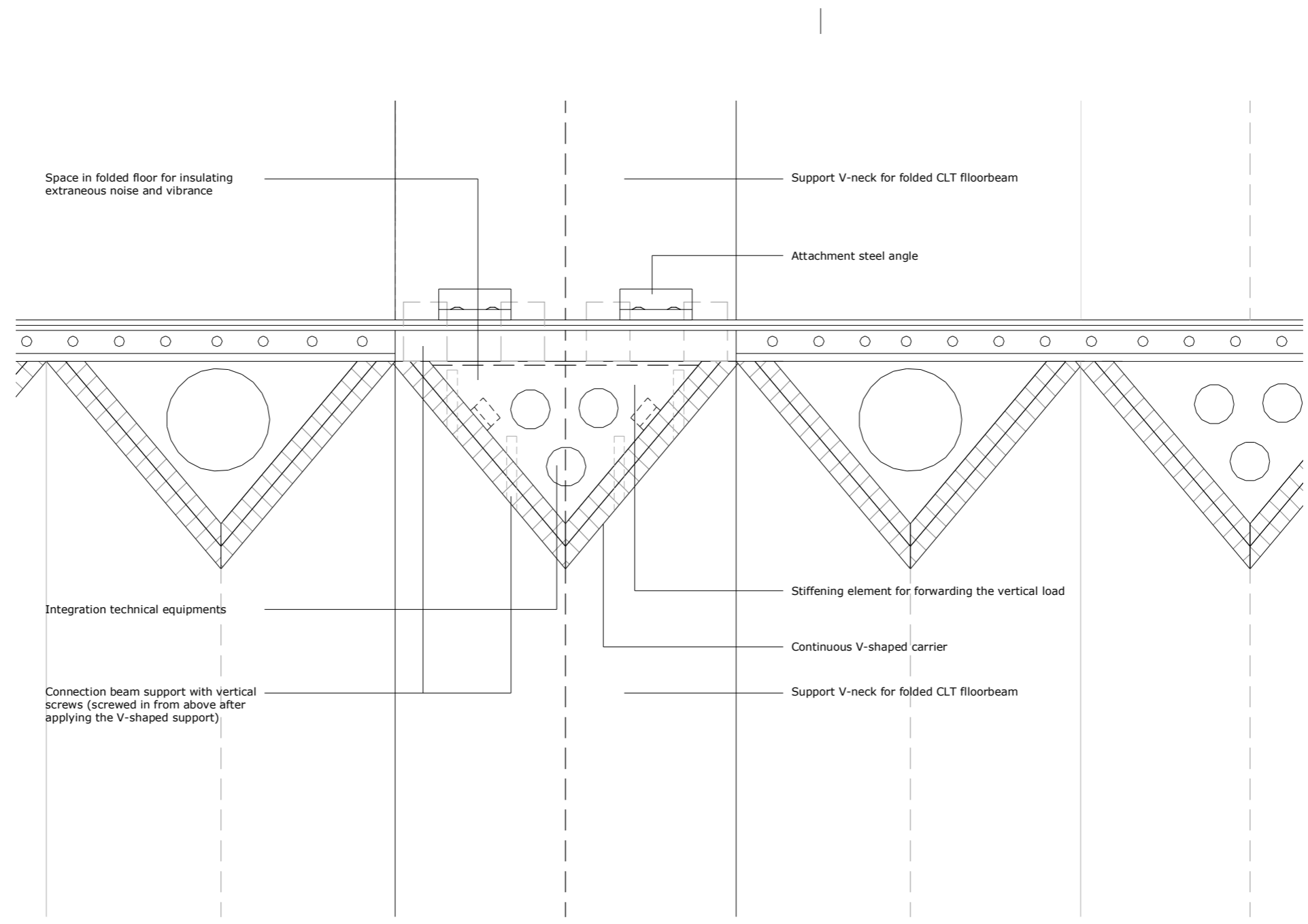












Space in folded floor for insulating extraneous noise and vibration

Support V-neck for folded CLT floorbeam

Attachment steel angle

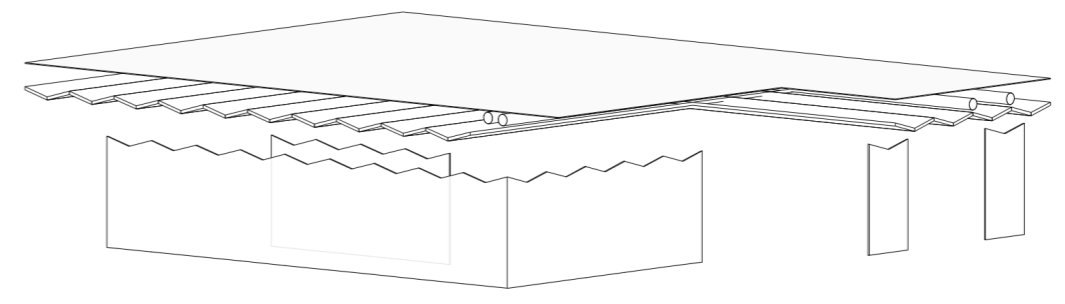
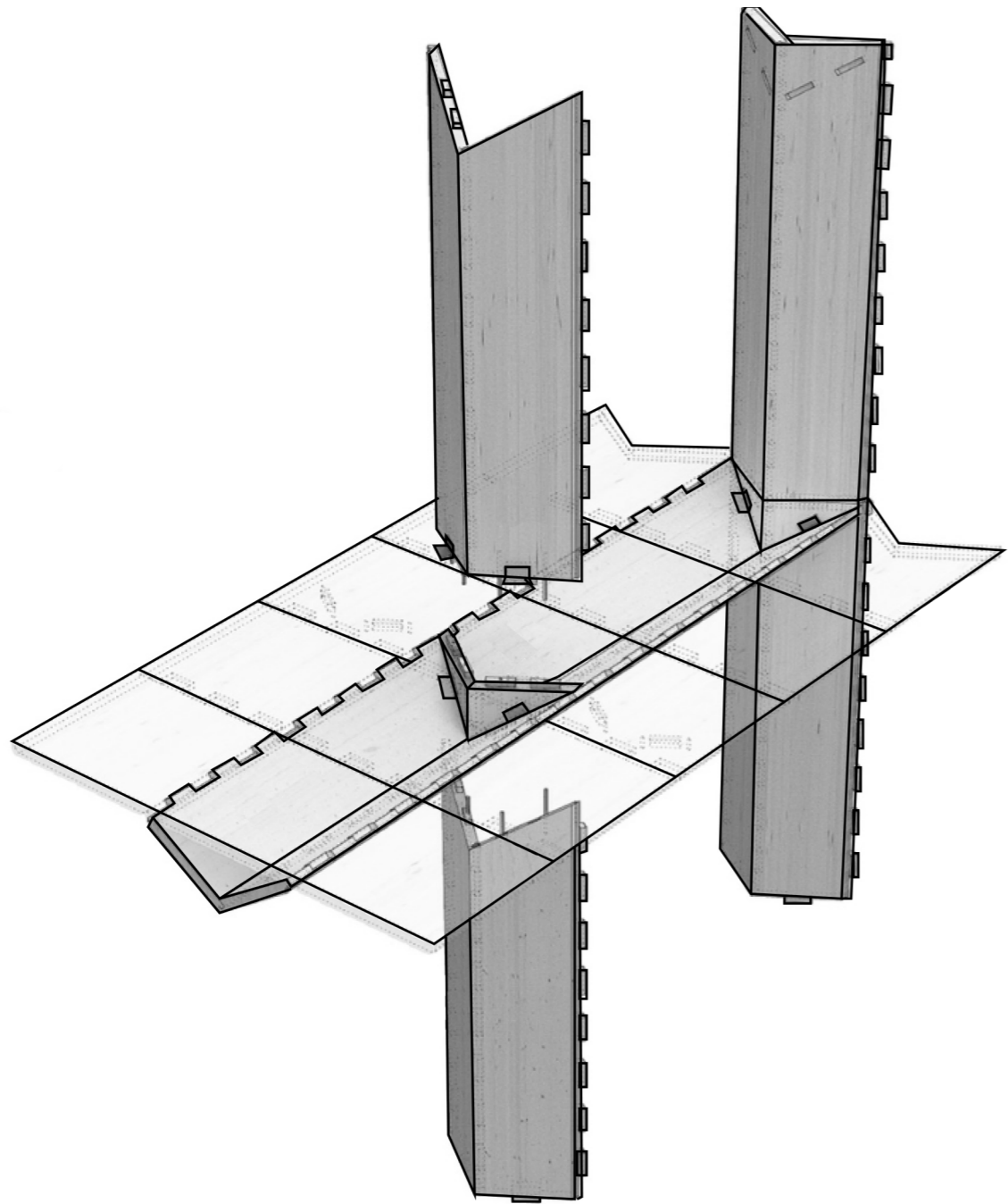
Integration technical equipments

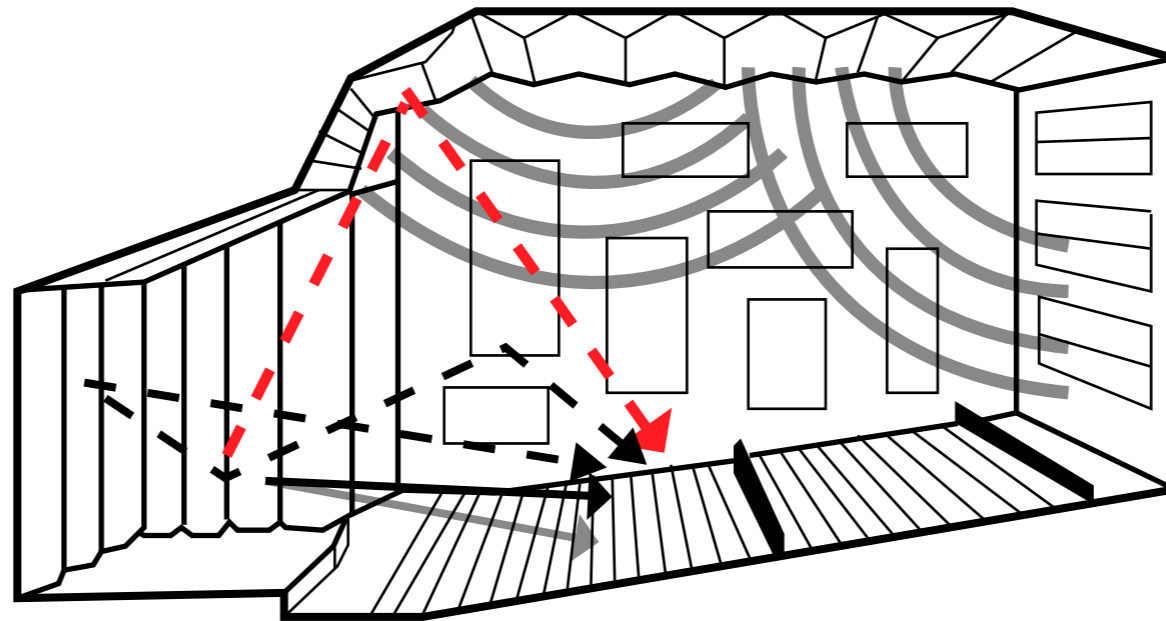
Stiffening element for forwarding the vertical load

Continuous V-shaped carrier

Connection beam support with vertical screws (screwed in from above after applying the V-shaped support)

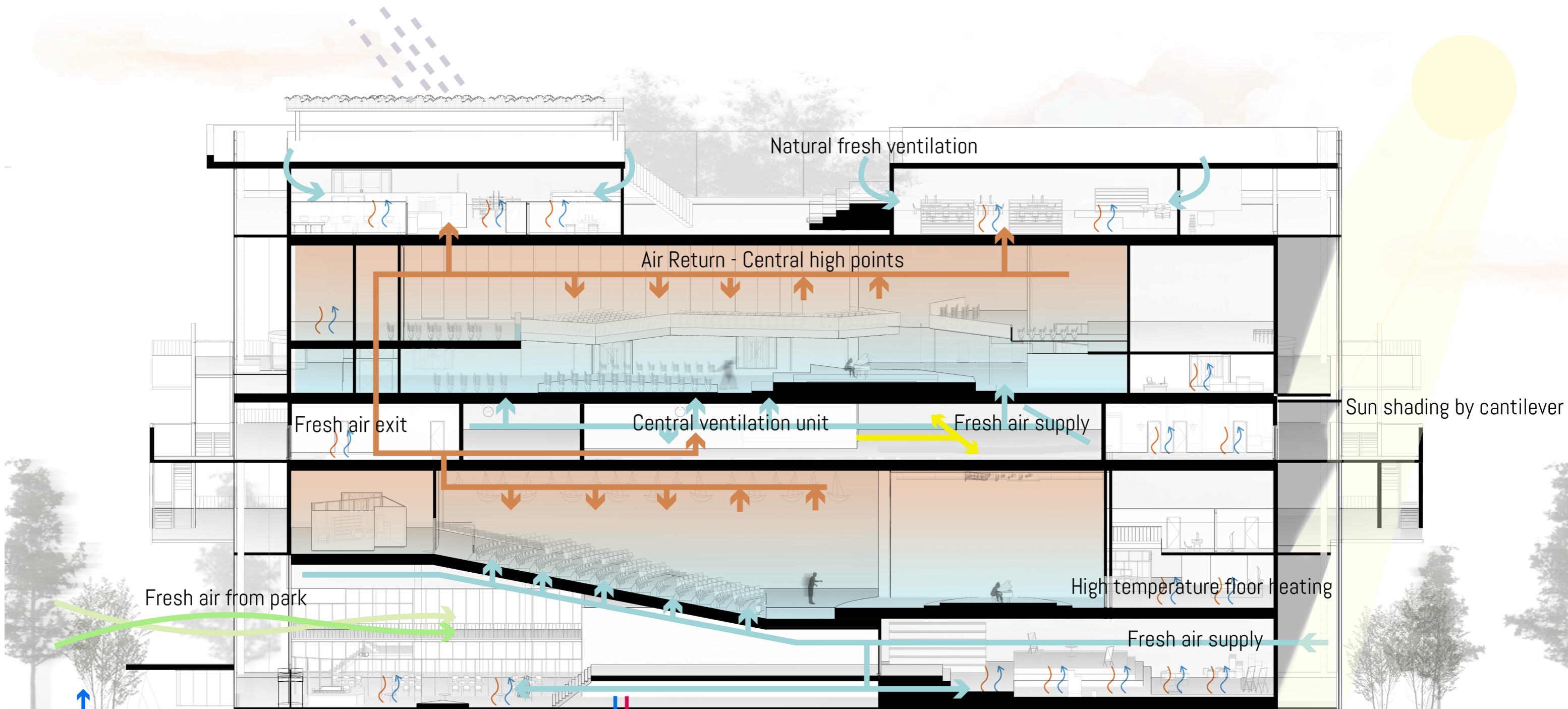
Support V-neck for folded CLT floorbeam





- DIRECT SOUND (0 TO 25 MSEC)
- EARLY REFLECTIONS (25 TO 100 MSEC)
- EARLY REFLECTIONS (25 TO 100 MSEC)
-

Rainwater harvesting



Natural fresh ventilation

Air Return - Central high points

Fresh air exit

Central ventilation unit

Fresh air supply

Sun shading by cantilever

Fresh air from park

High temperature floor heating

Fresh air supply

Thermal energy storage system

