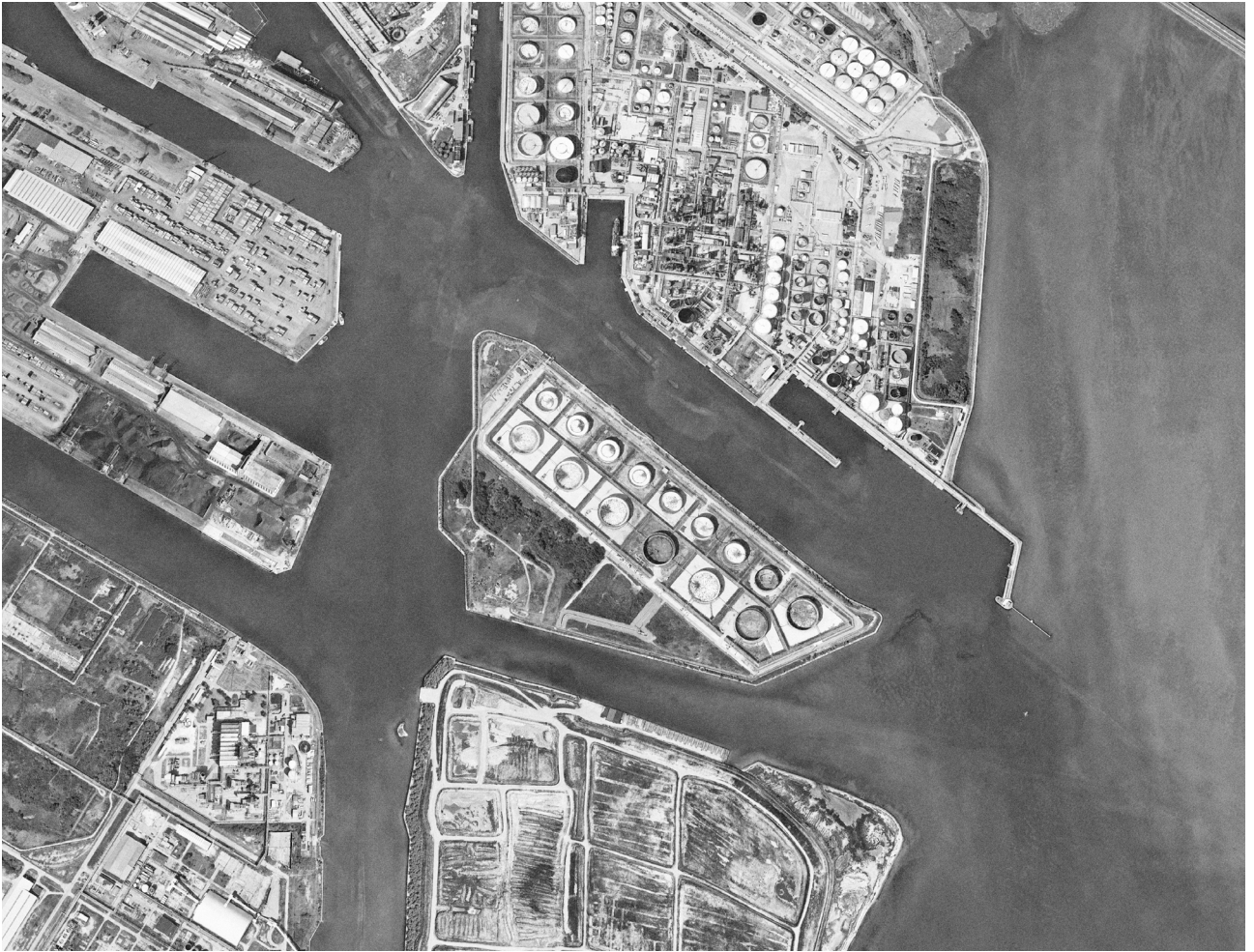
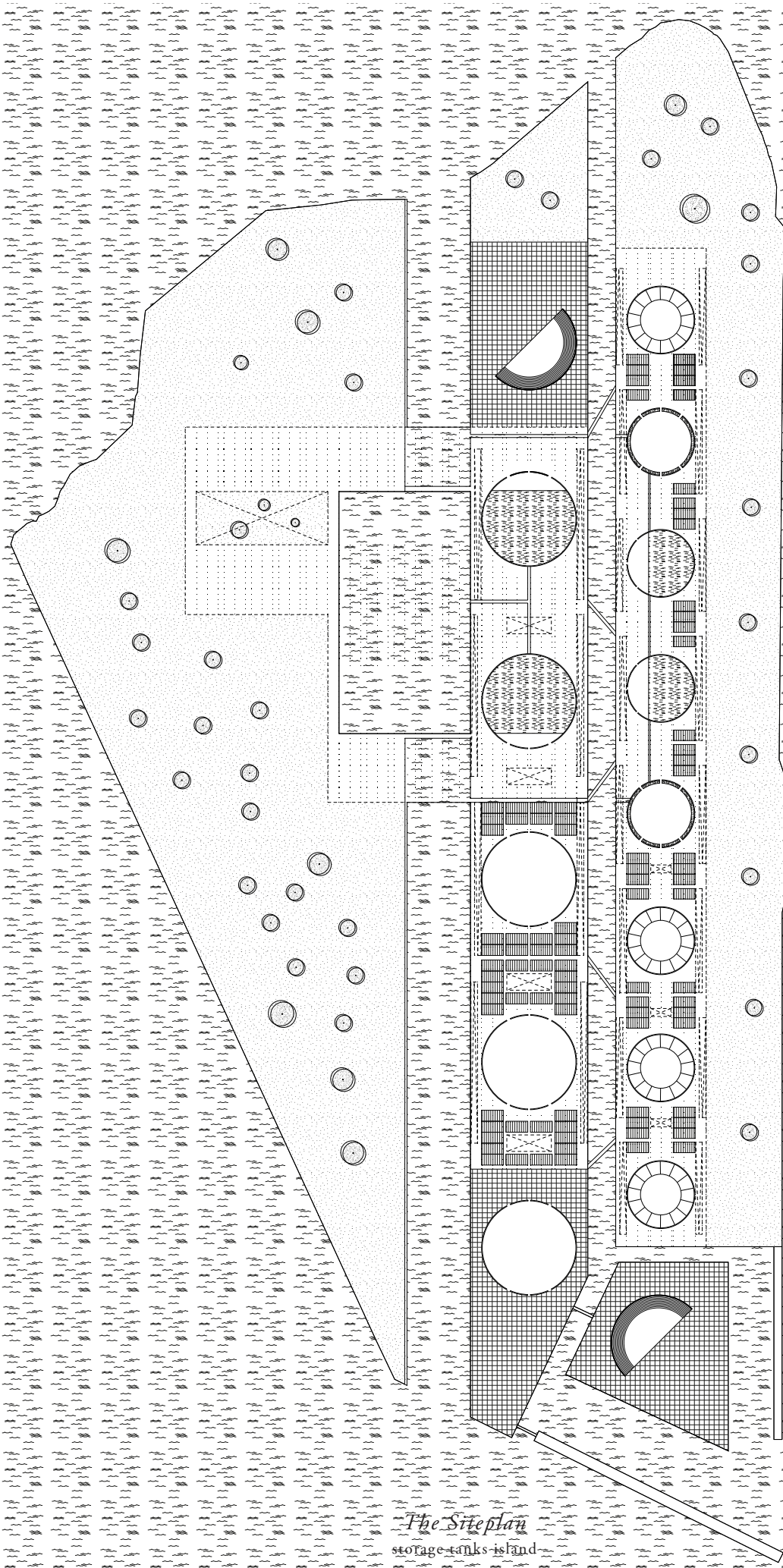


**THE**

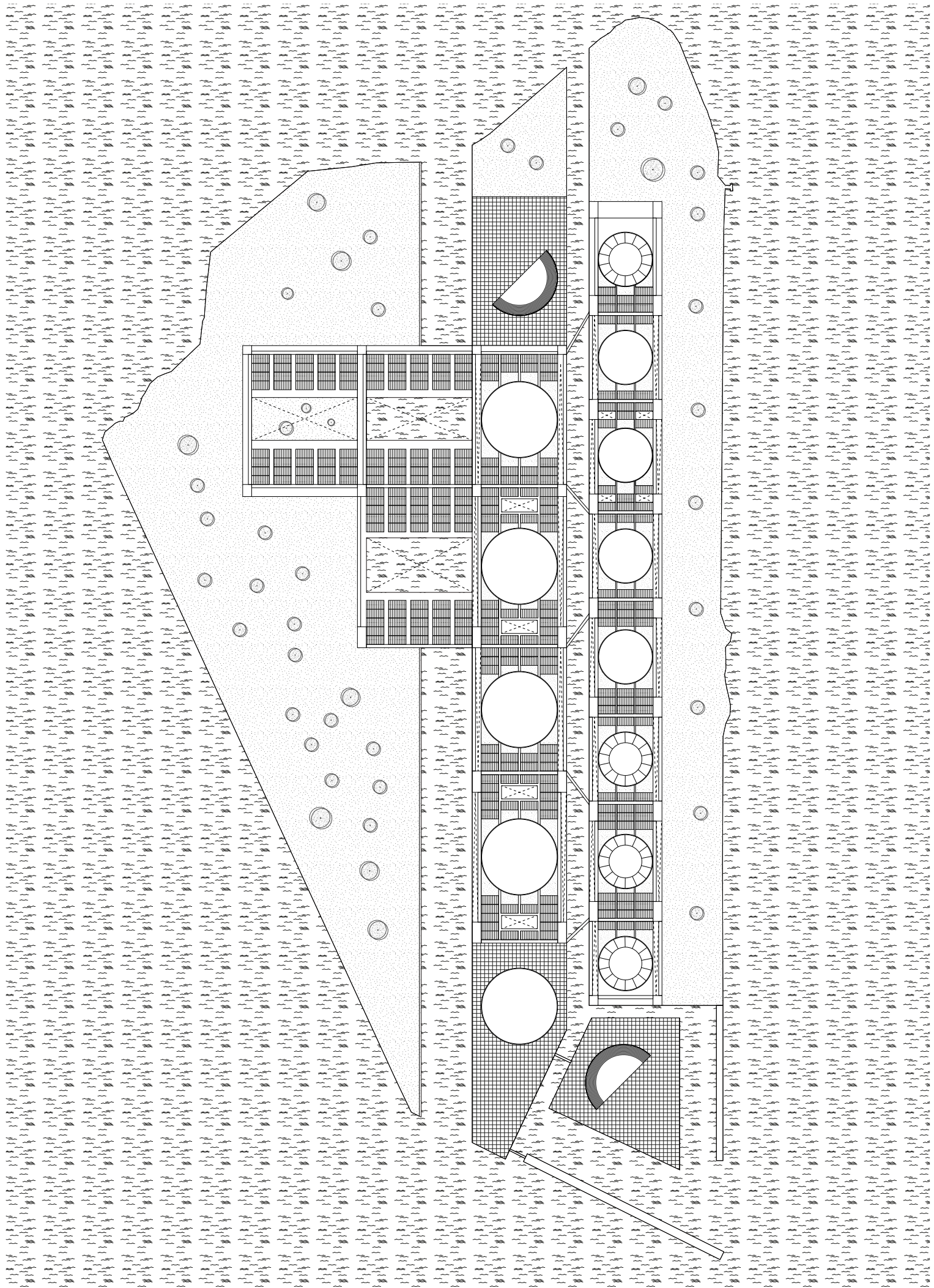
**DESIGN PROCESS**

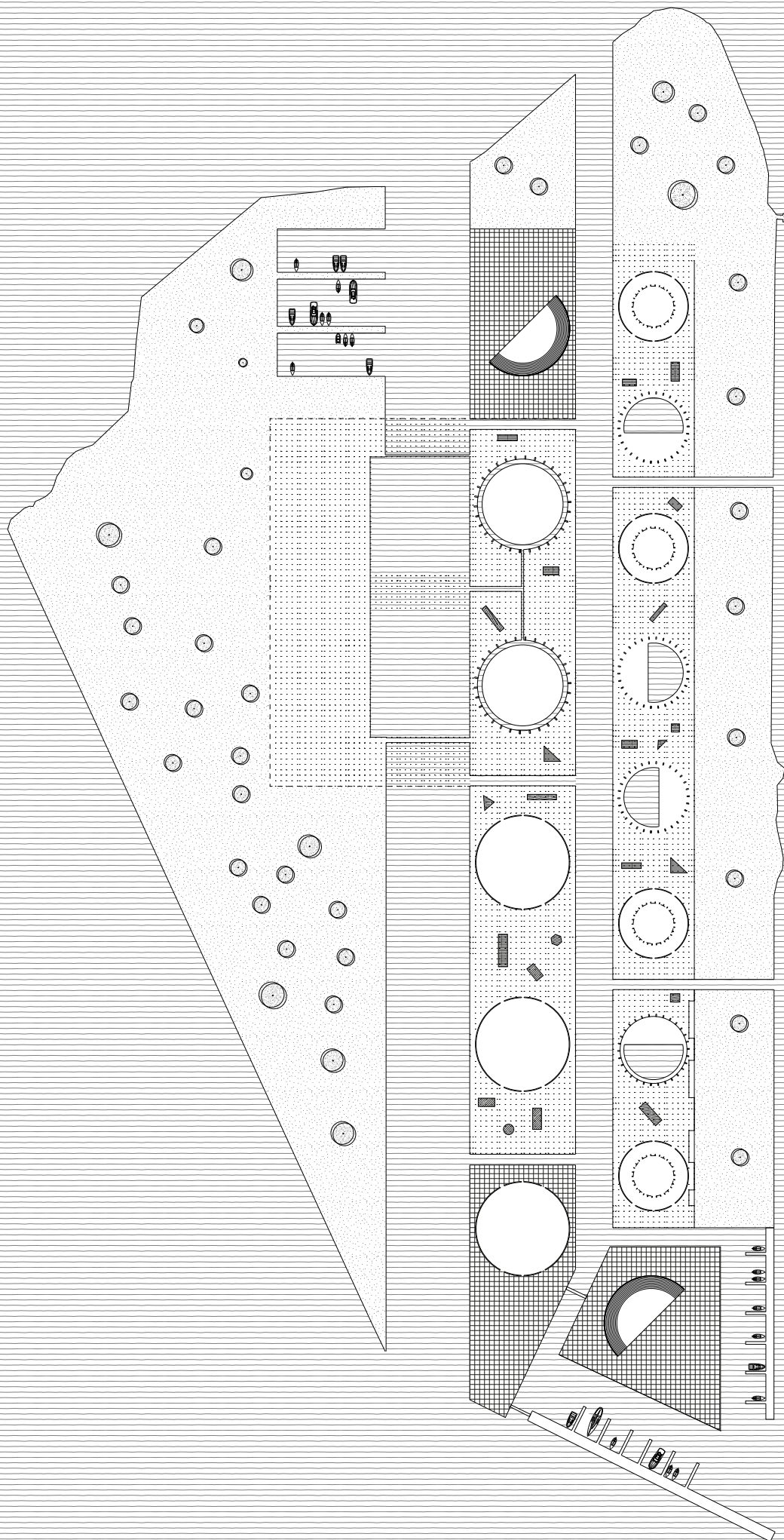


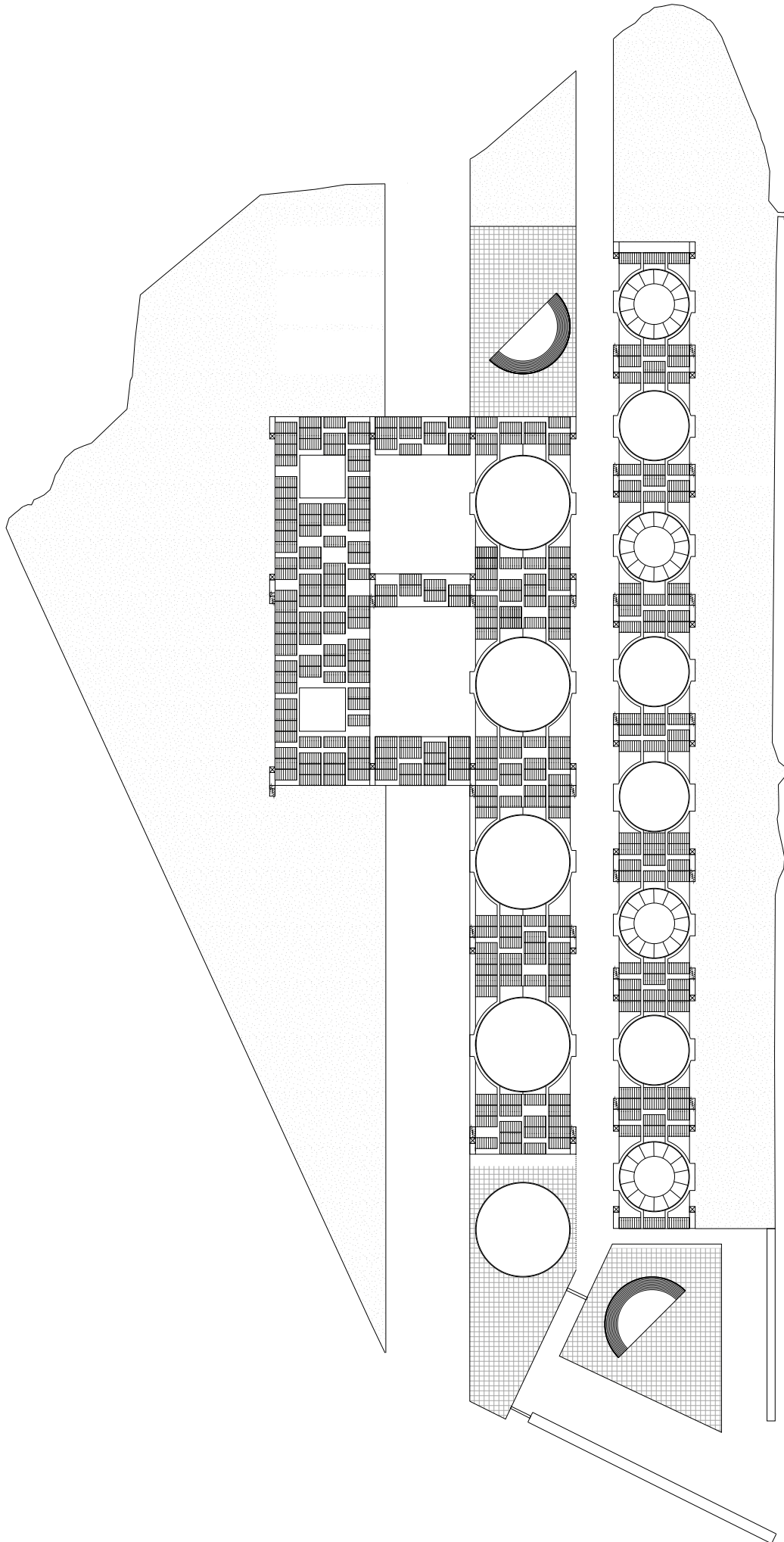
*The Site*  
Marghera

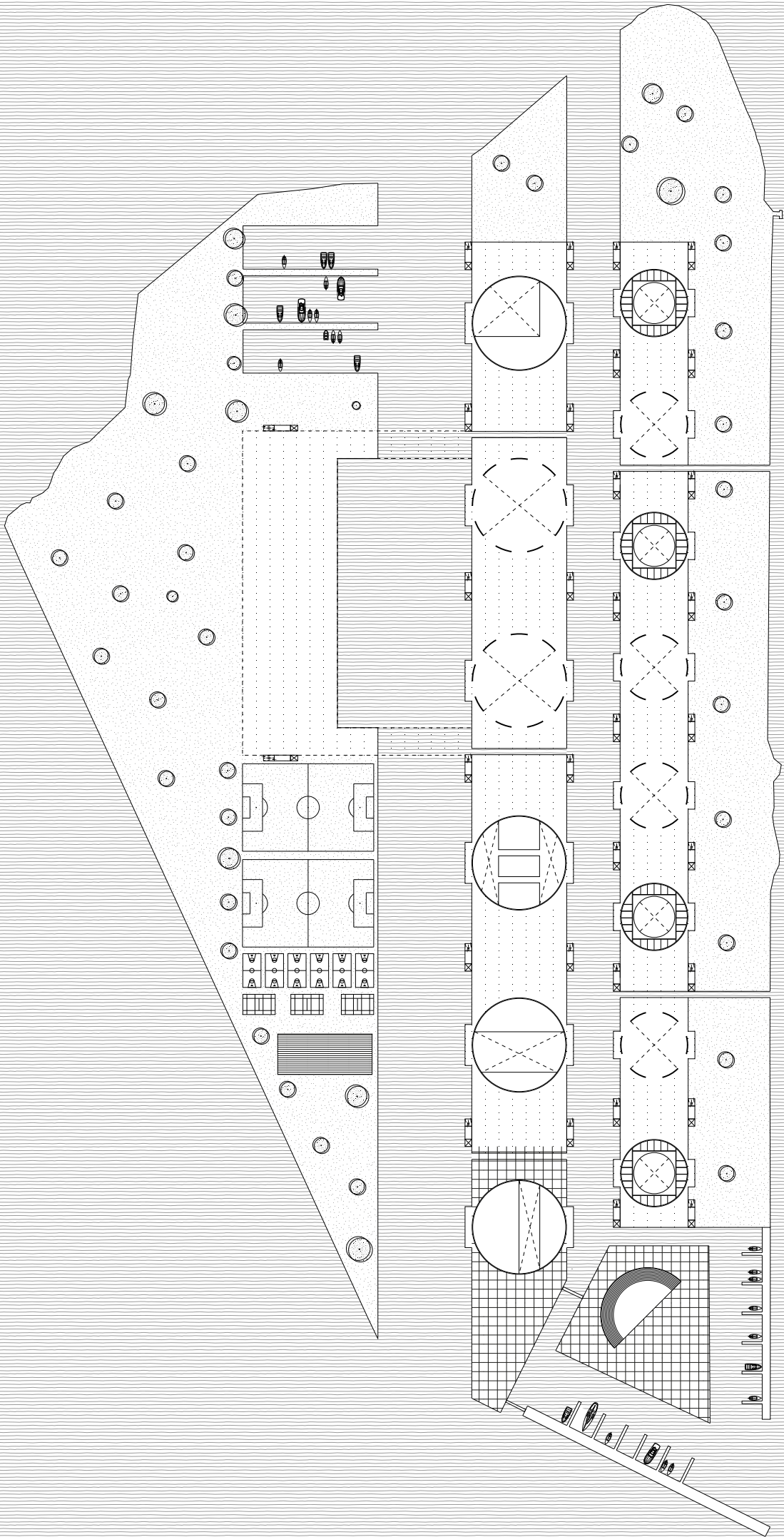


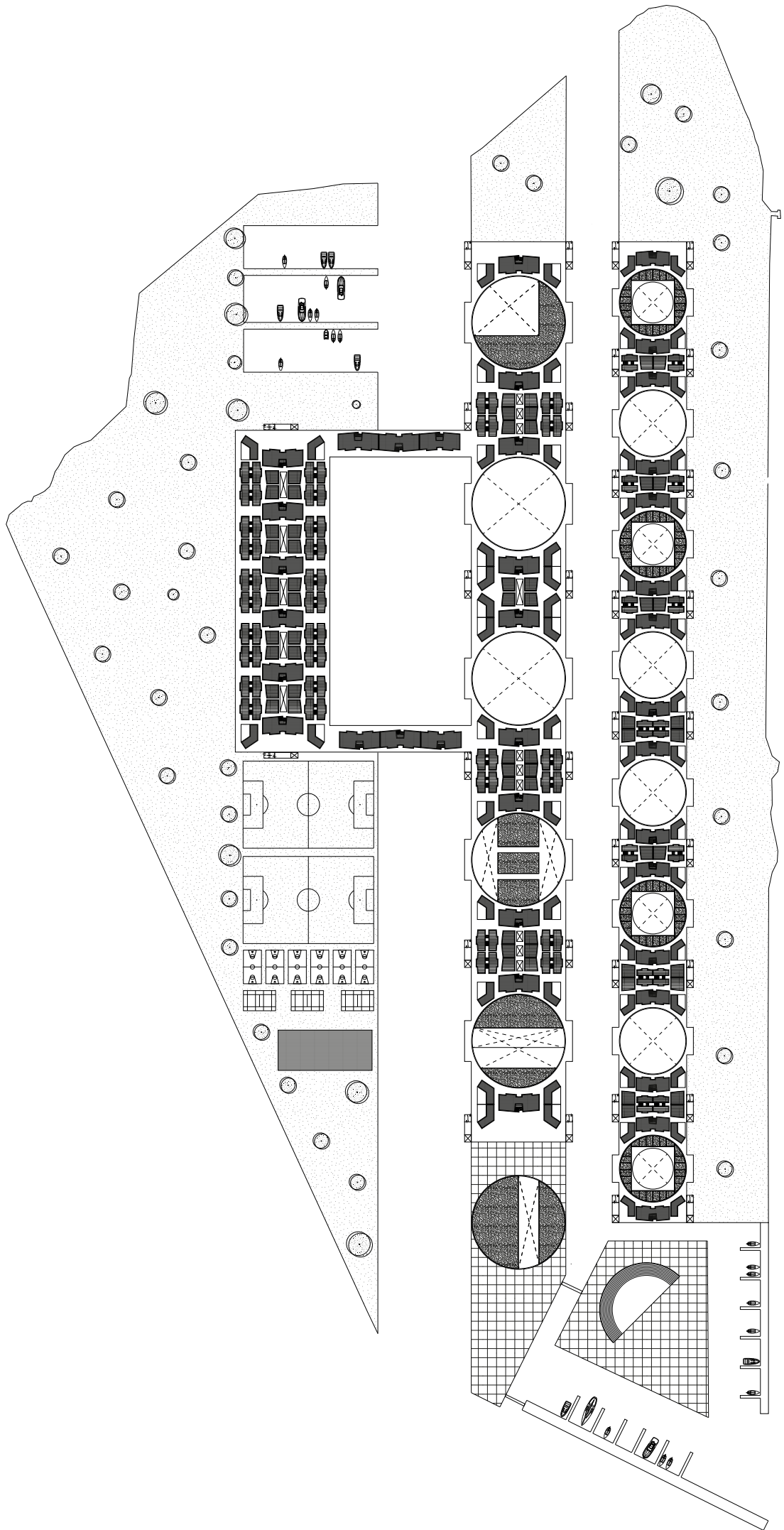
The Siteplan  
storage tanks island



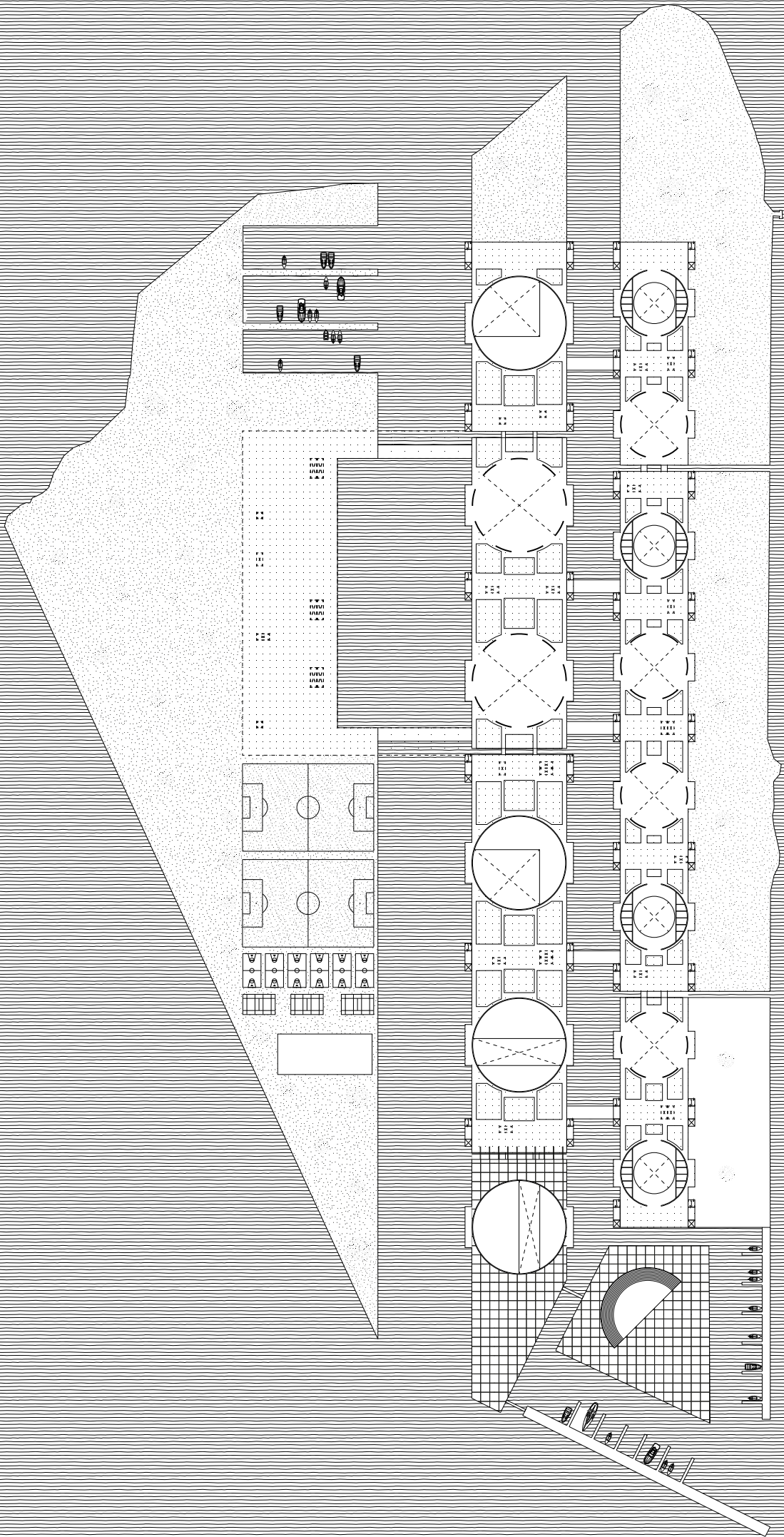


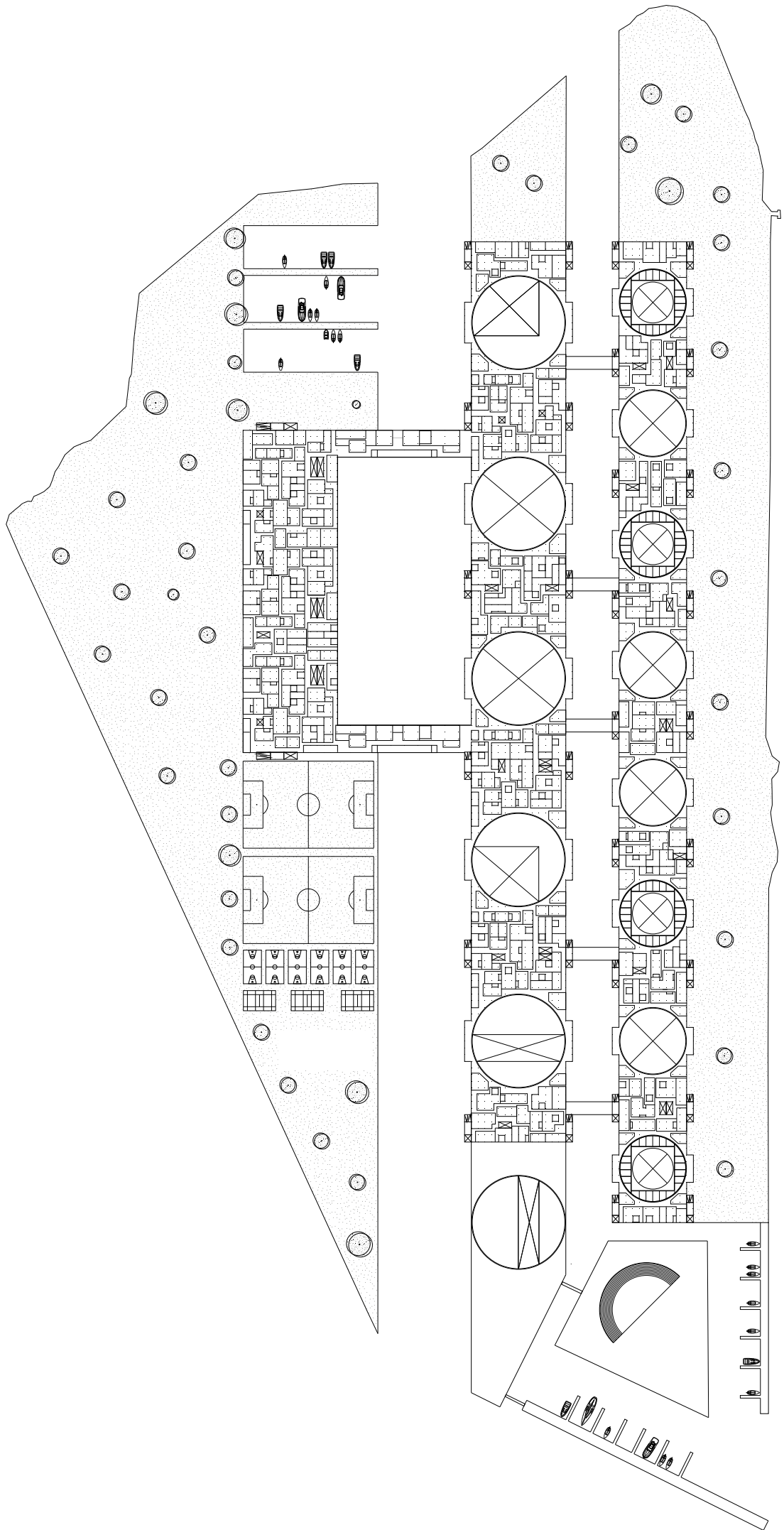


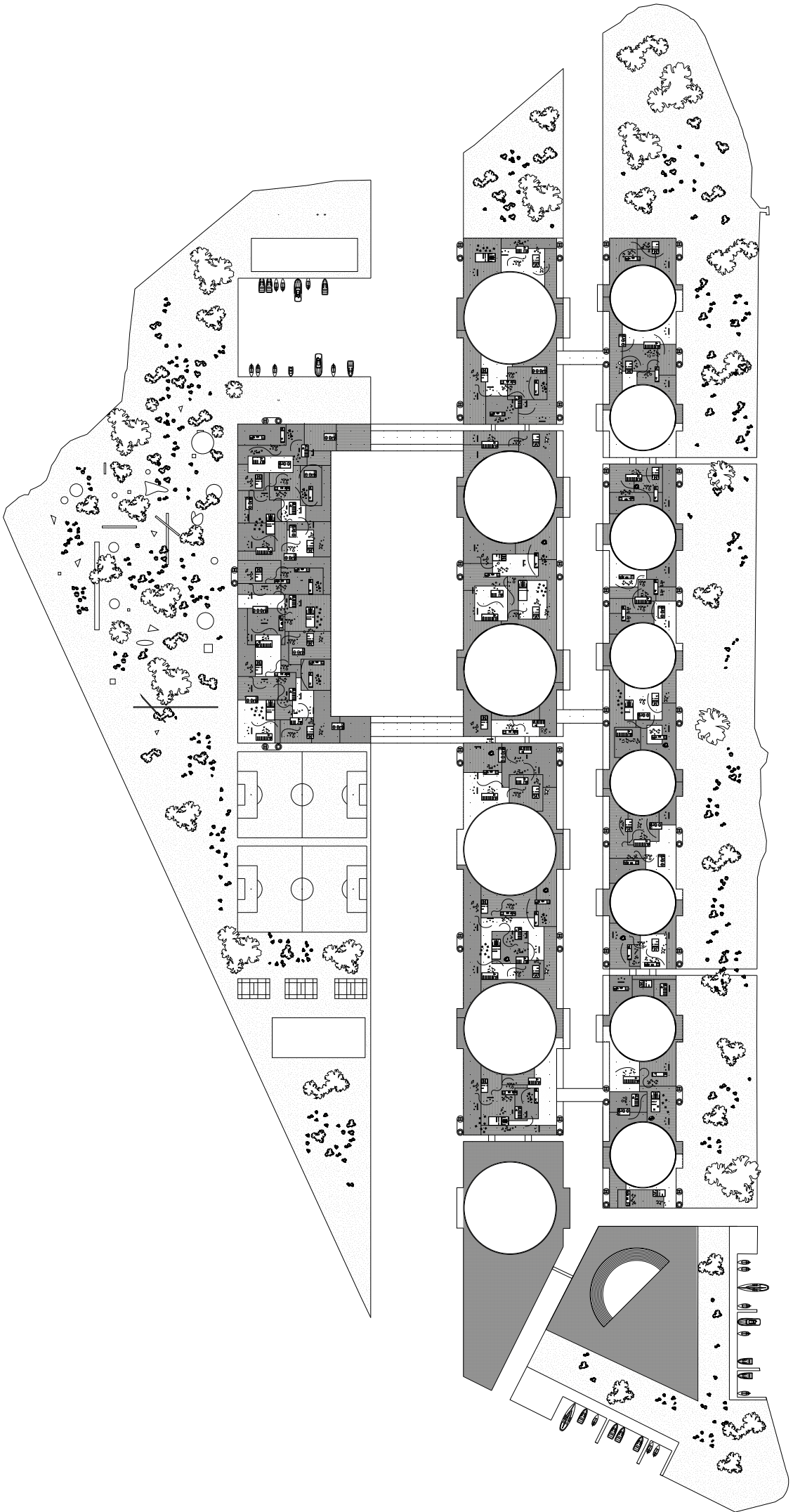


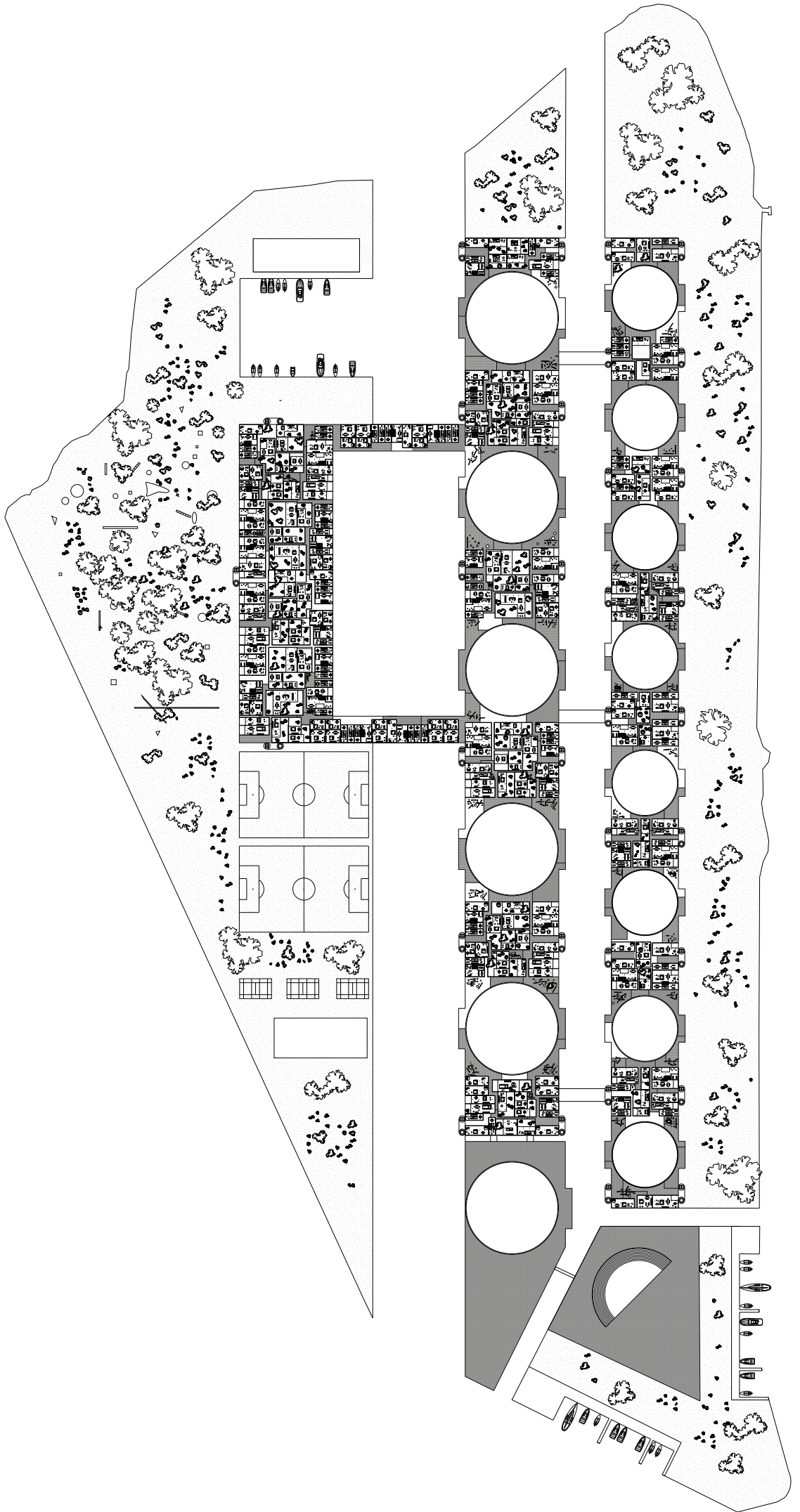


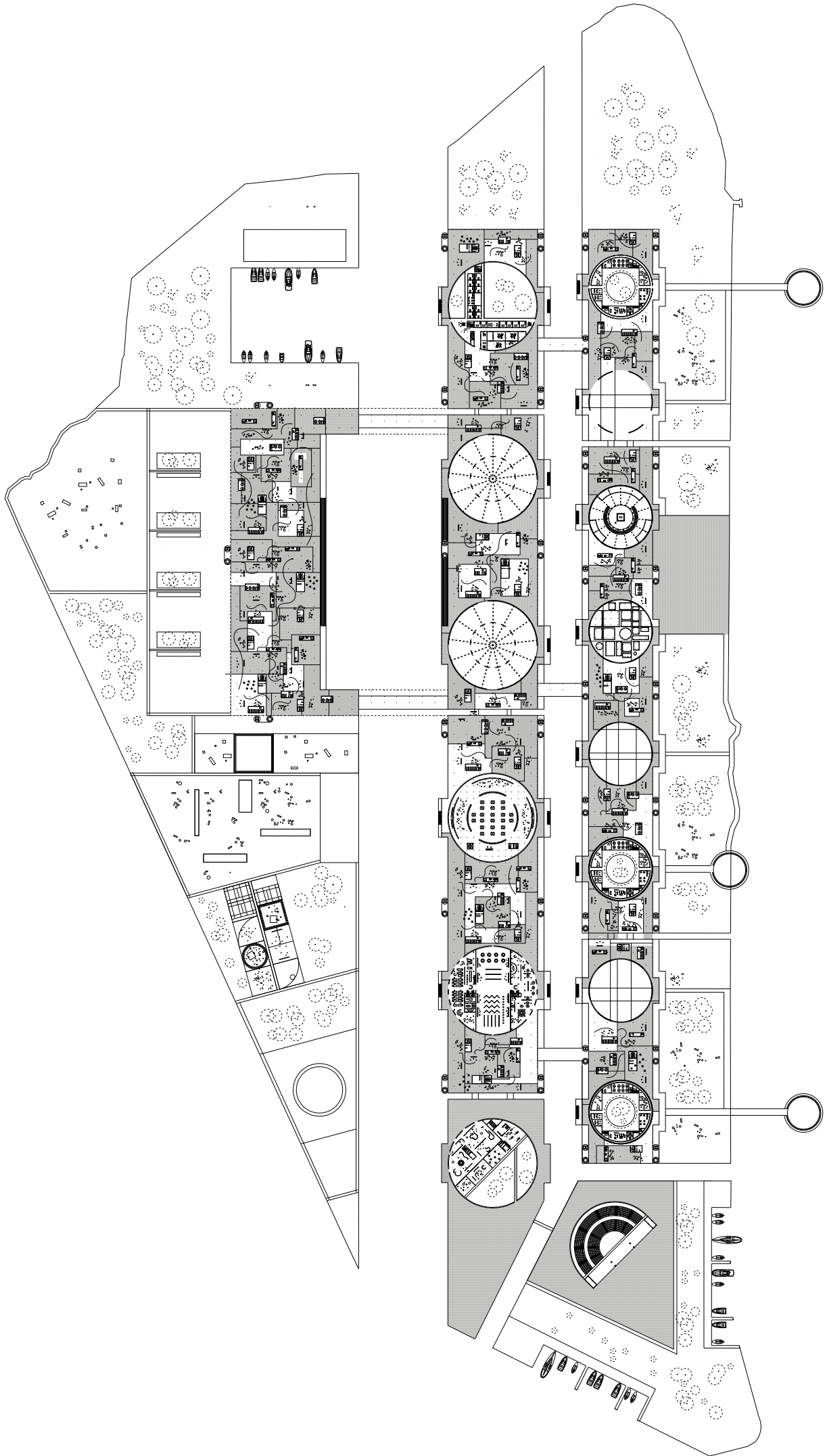


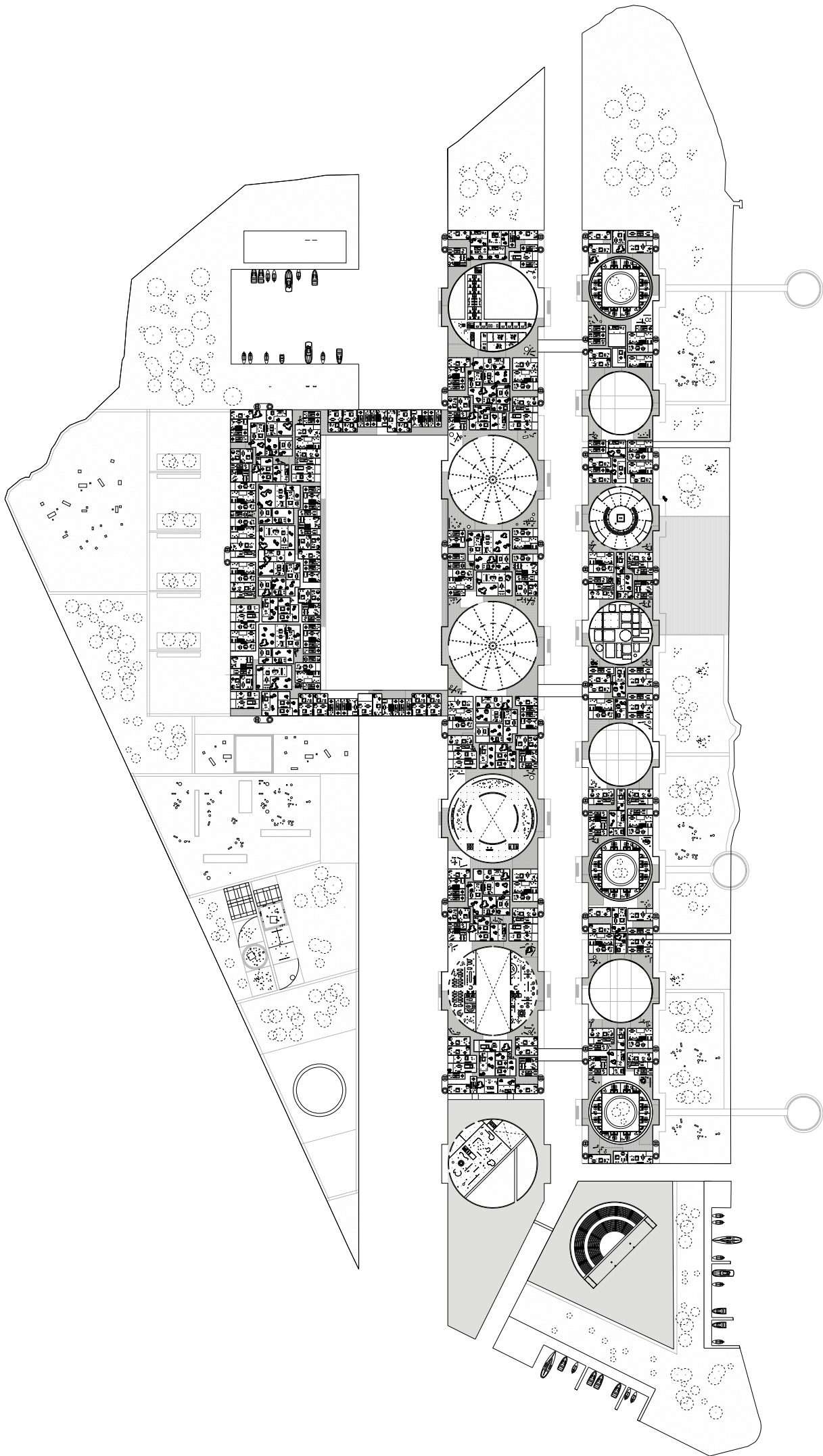


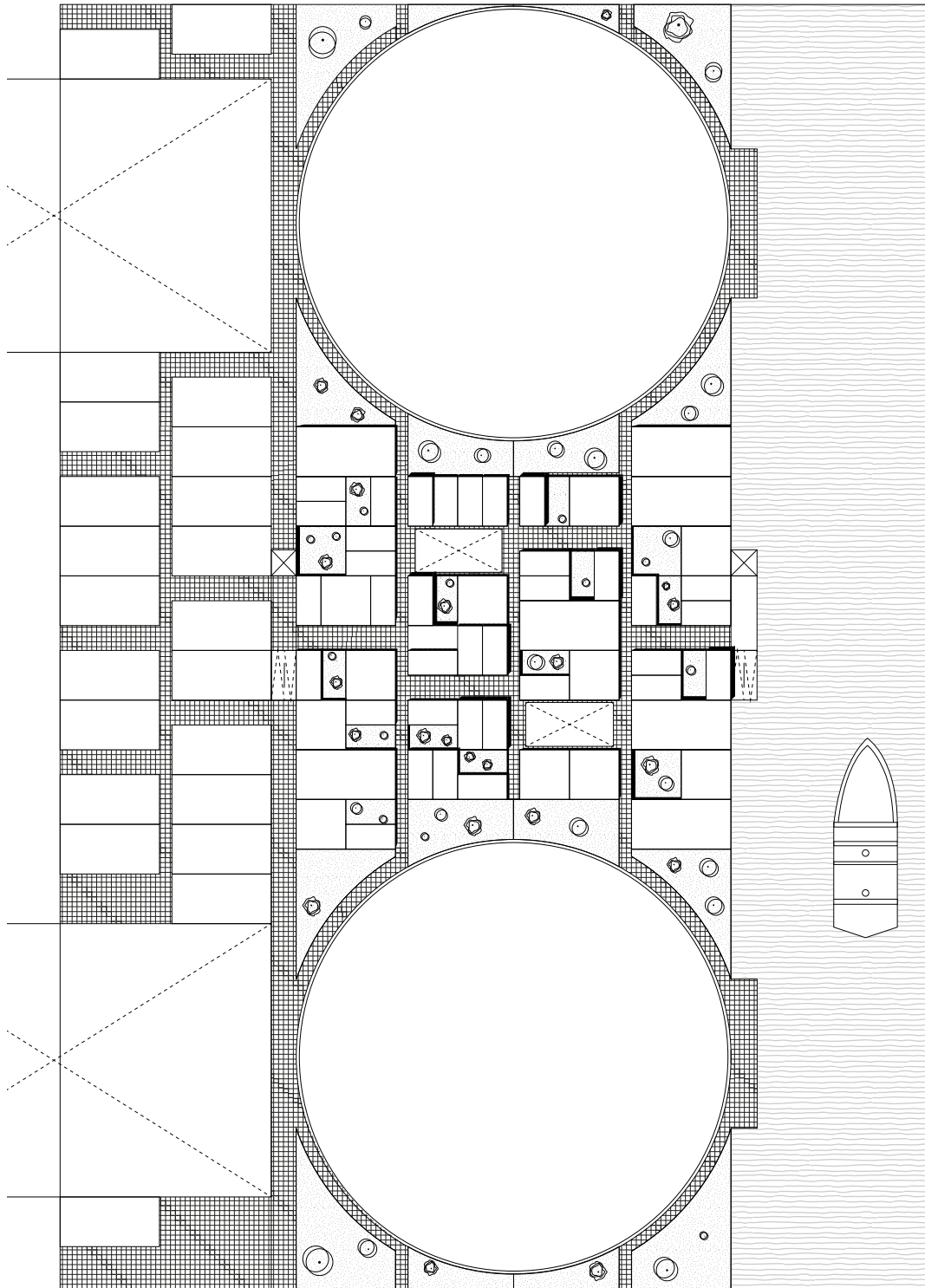










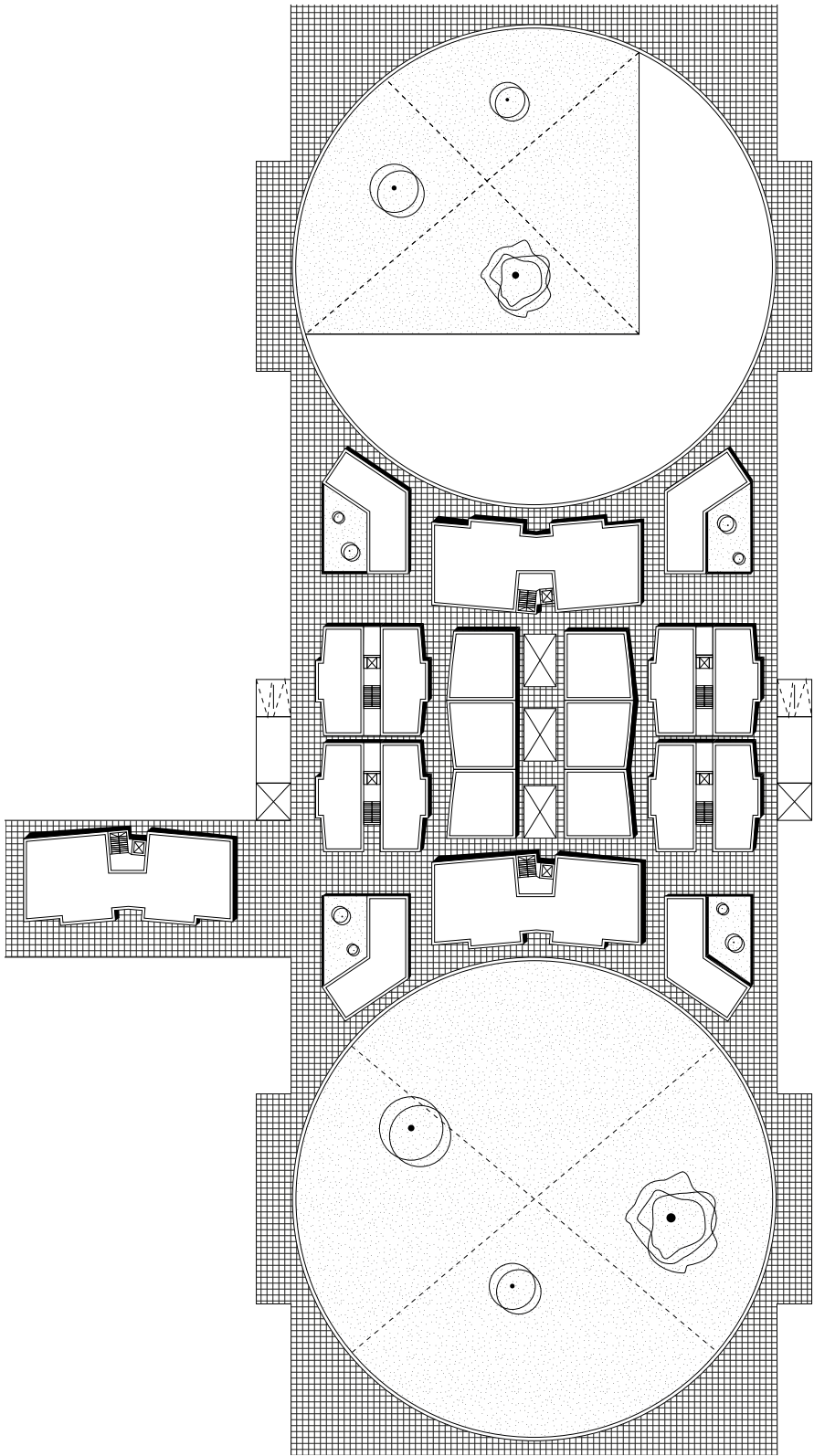


2.

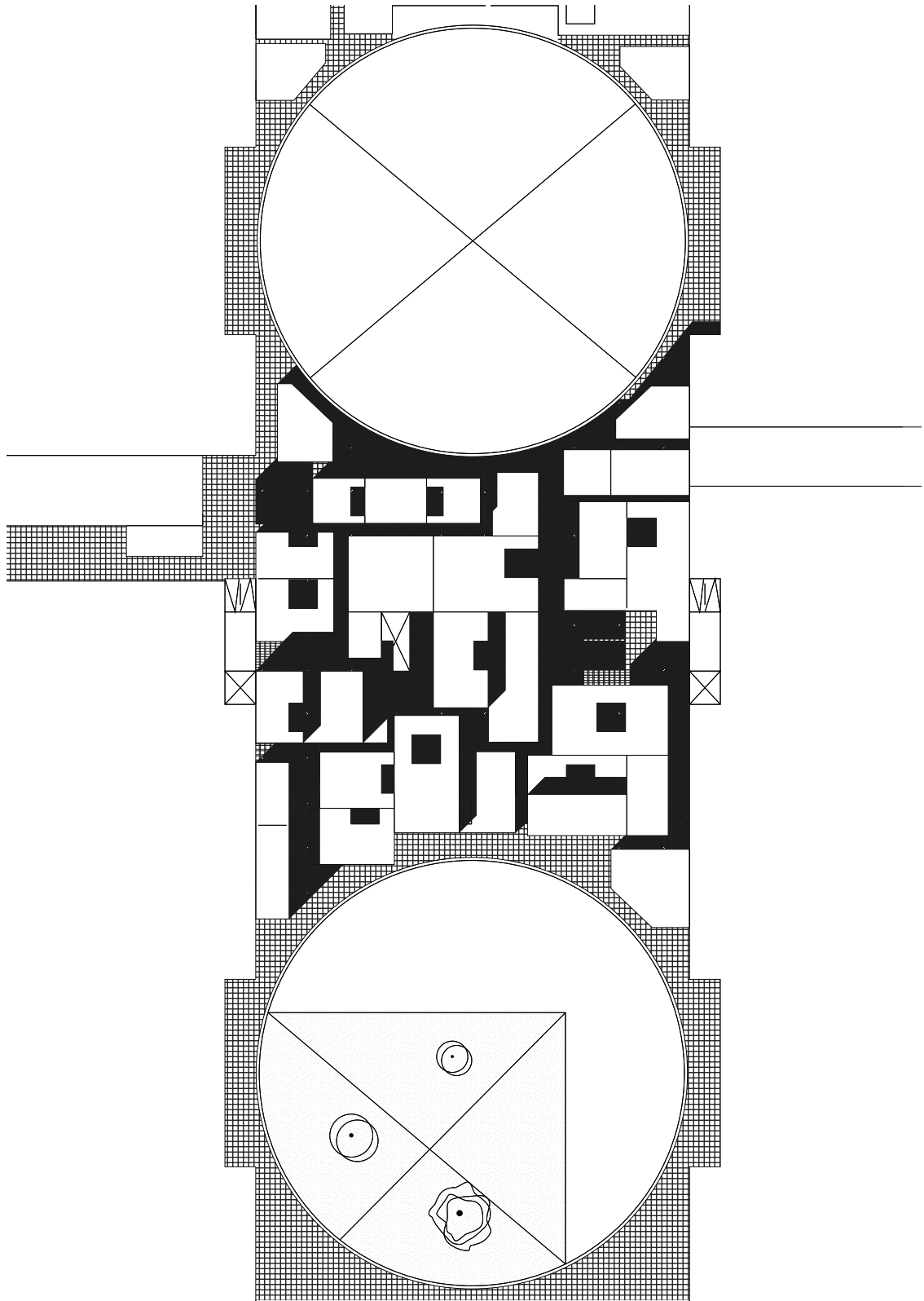
Story

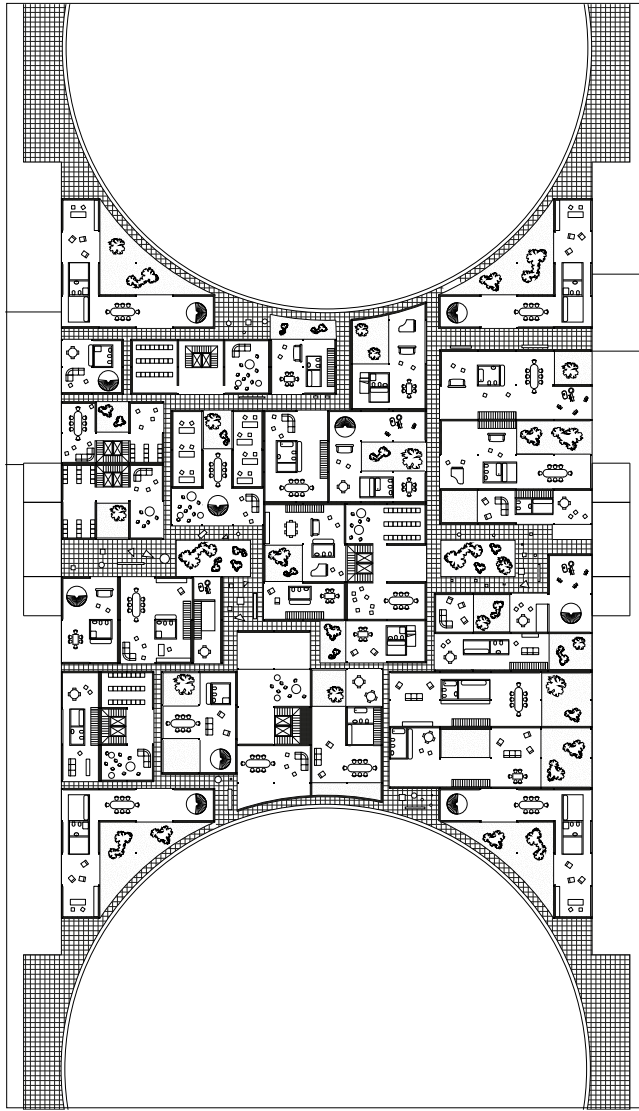
1:500

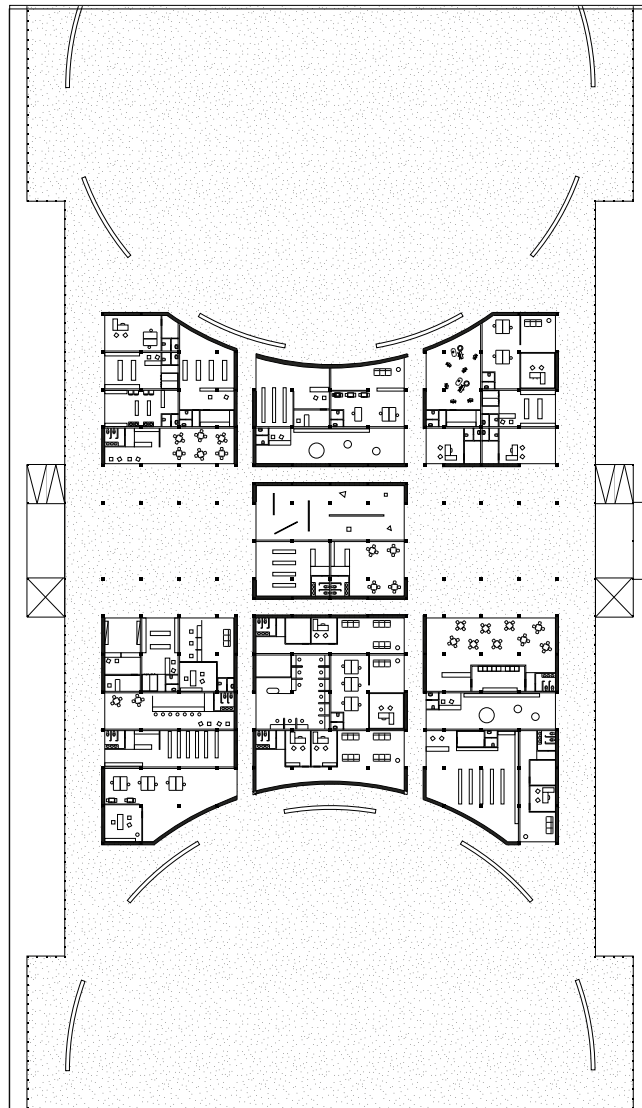
*Plan Development*  
first floor



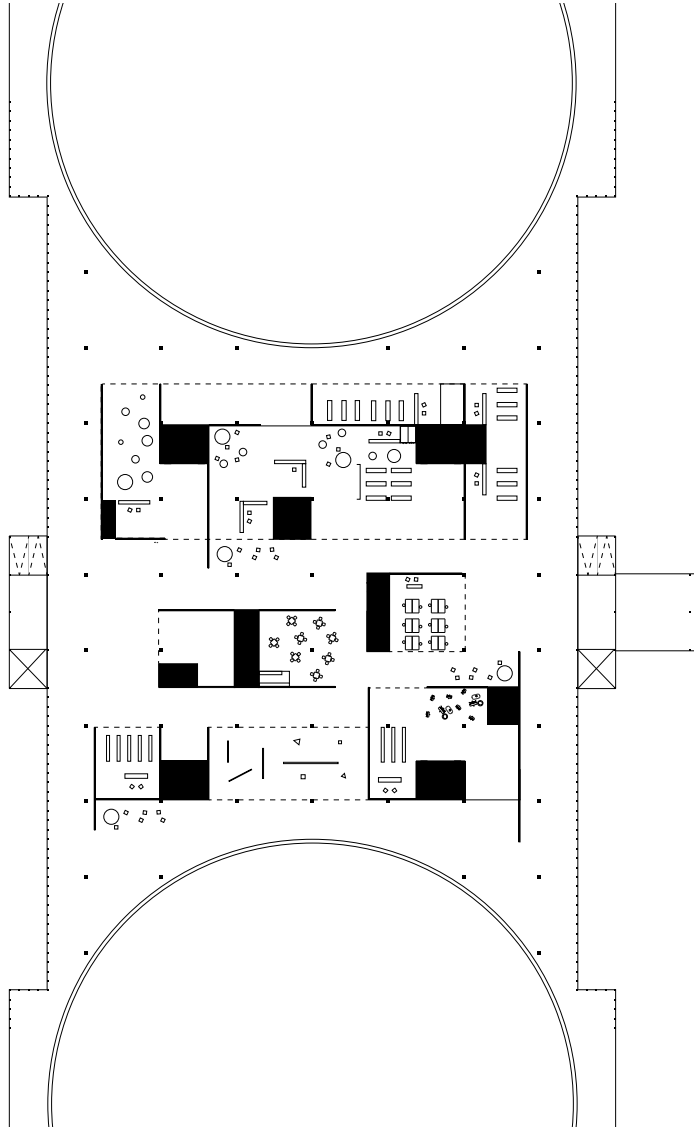


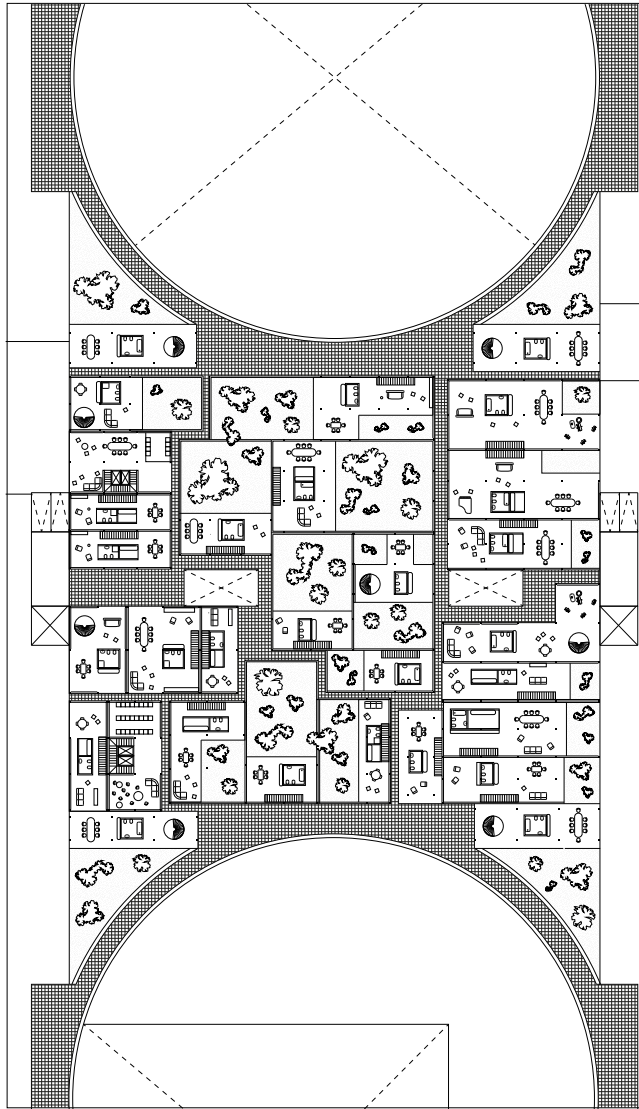


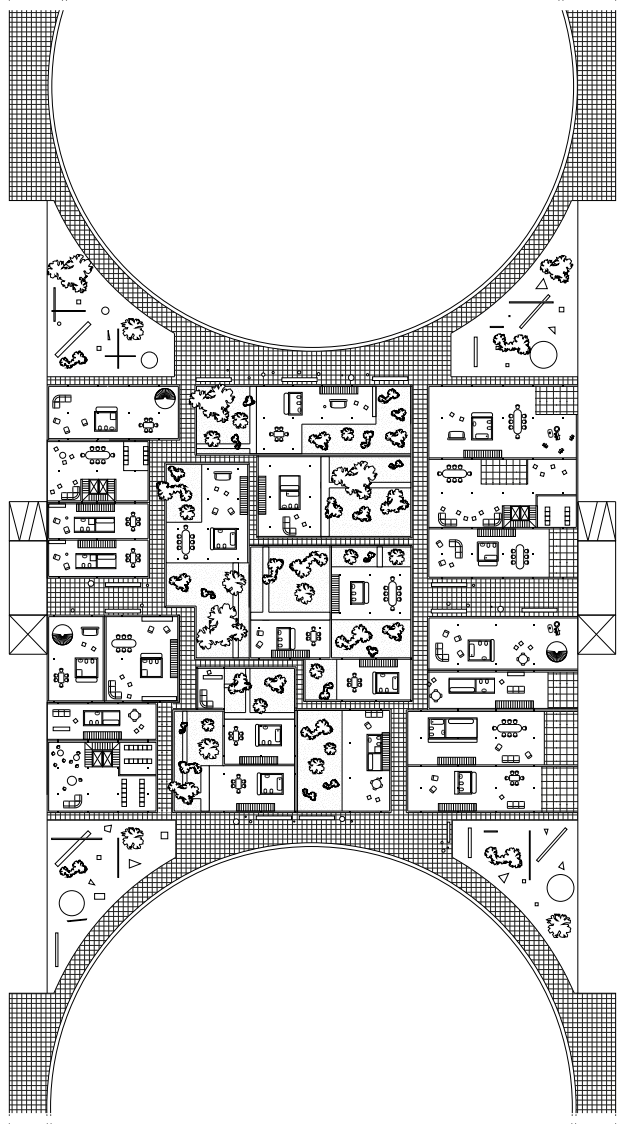


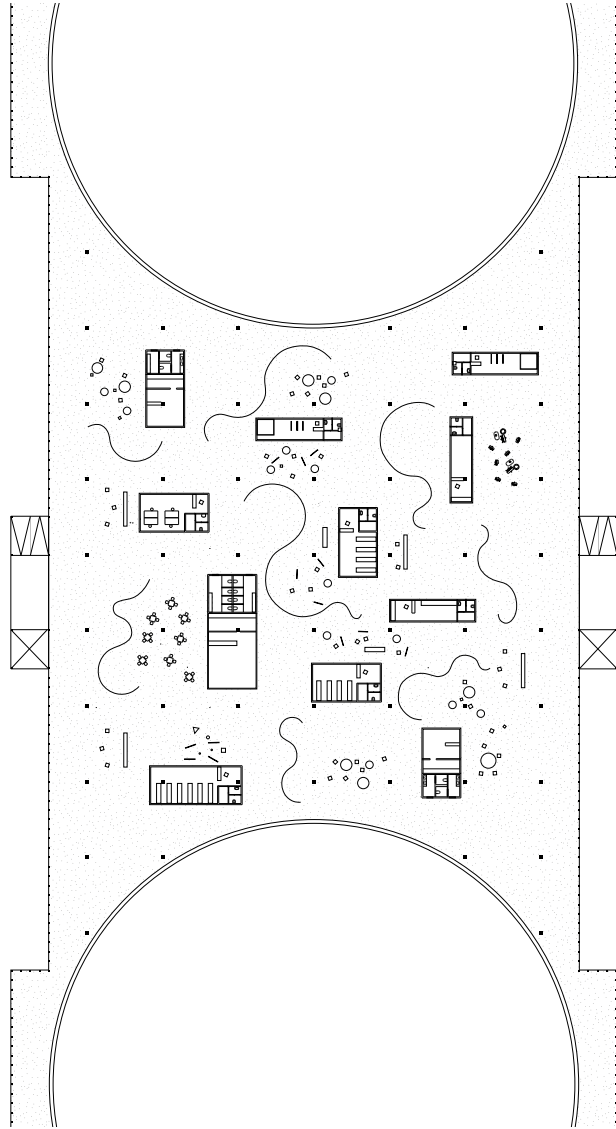


*Plan Development*  
ground floor









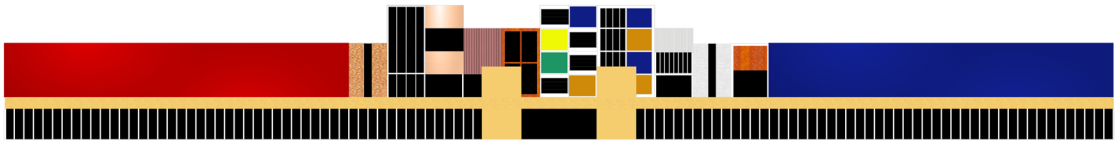


*Rua Nova dos Mercadores*  
unknown artist





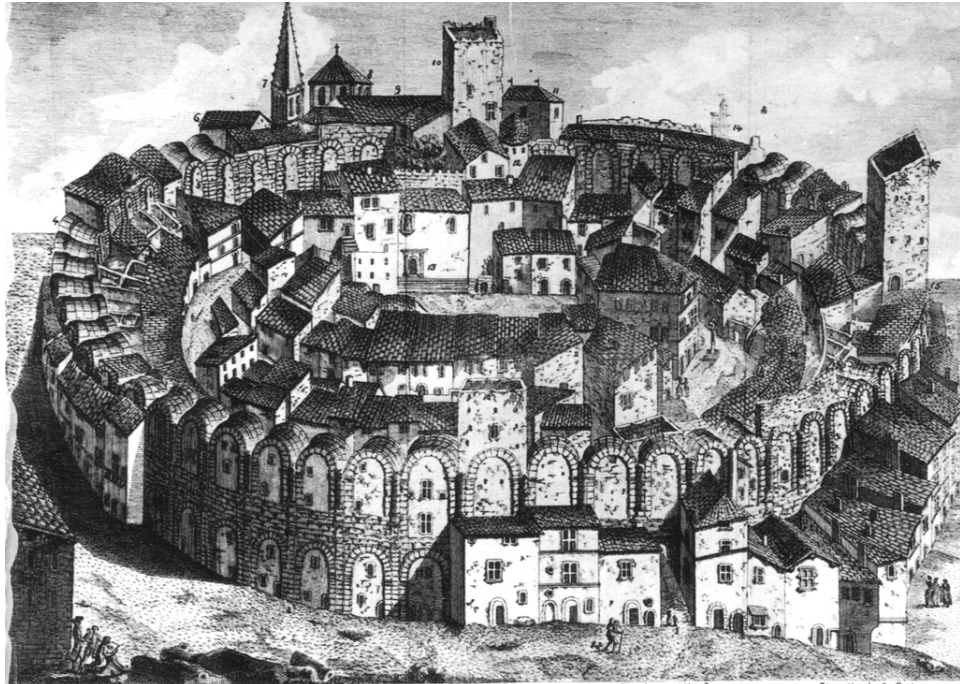








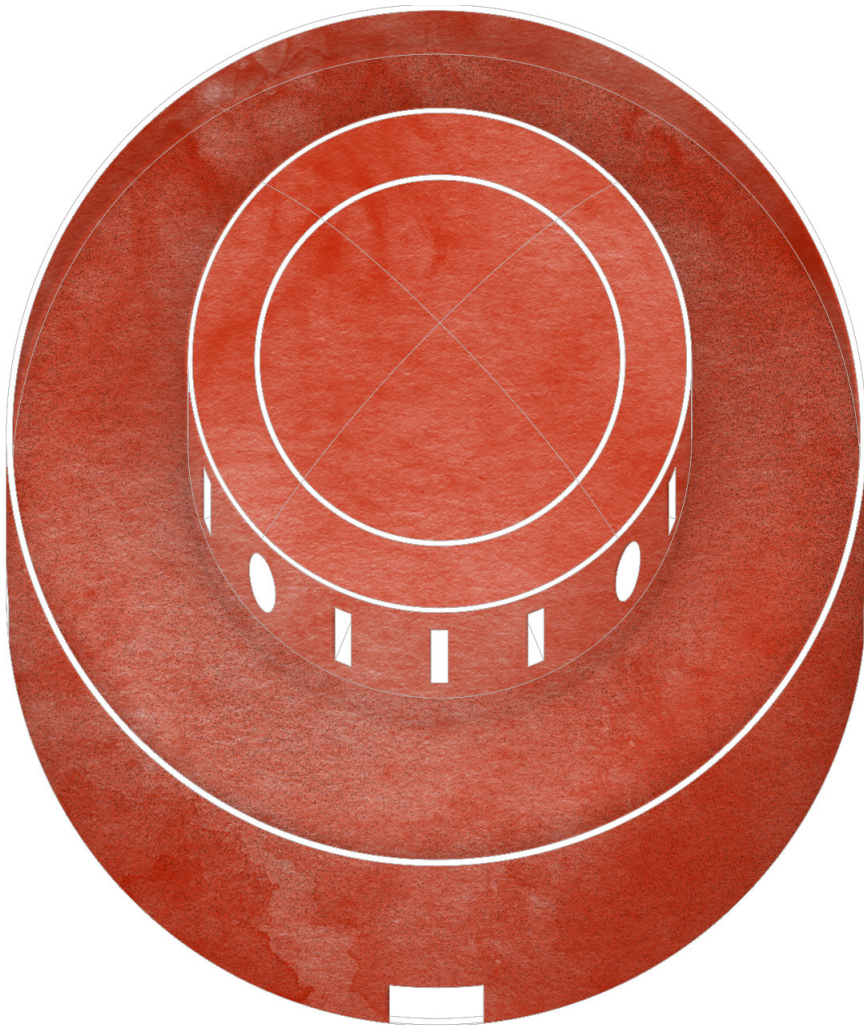
*Storage Tanks Island*  
archivio ente zona industriale



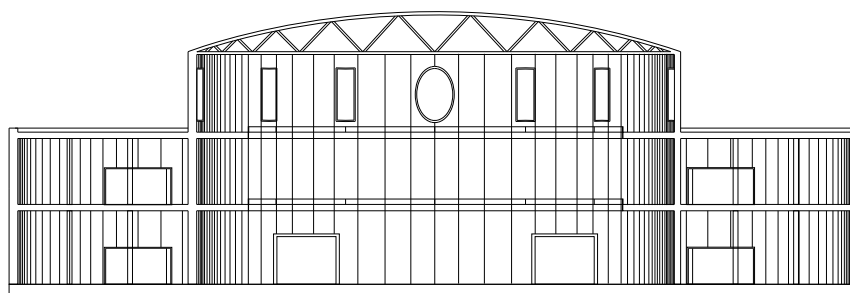
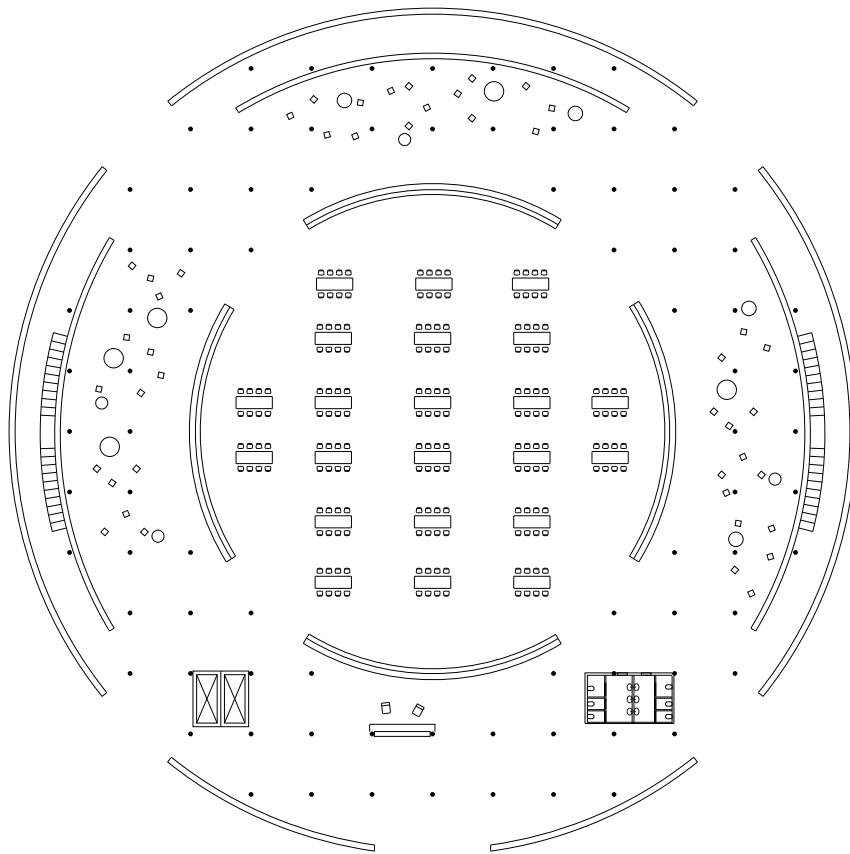
1. Passage moderne.  
 2. Siphon creusé sur la rue.  
 3. Trou au-dessus du siphon.  
 4. Grande entrée antique, au midi.  
 5. Passage moderne.  
 6. Salle de spectacles.  
 7. Clocher des Cordeliers.  
 8. Clocher de la Métropole.  
 9. Eglise des Cordeliers.  
 10. Tour de M<sup>r</sup> l'Abbe Compaing.  
 11. Pavillon de M<sup>r</sup> le Baron de Lathom.  
 12. Chapelle moderne de S<sup>r</sup> Michel.  
 13. Chapelle de S. Genès.  
 14. Clocher des Dominicains.  
 15. Grande entrée antique, au nord.



*Urban Stratification*  
 roman amphitheatre in arles and lucca



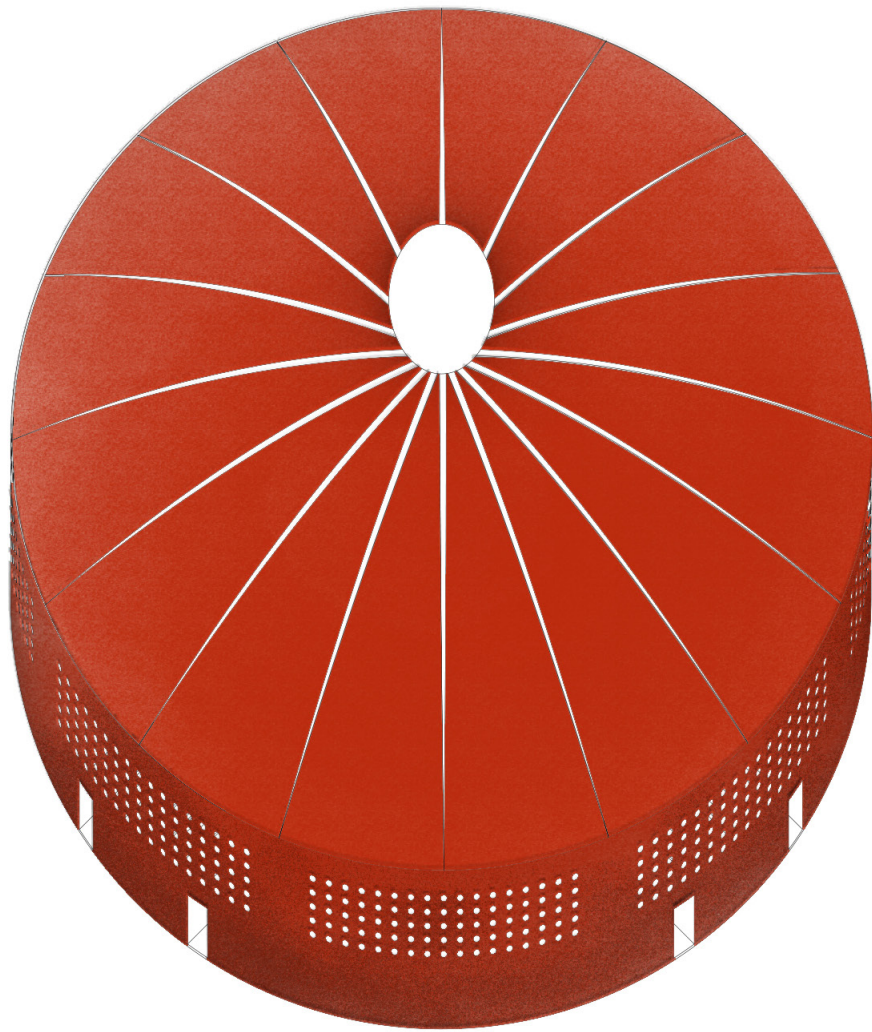
*The Library*  
axonometric view



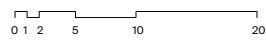
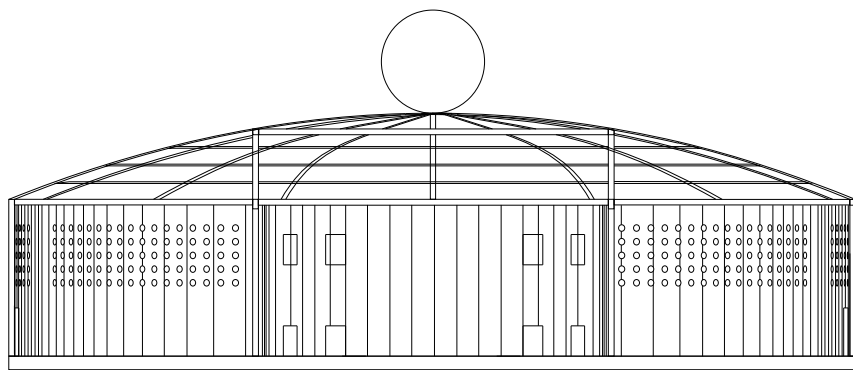
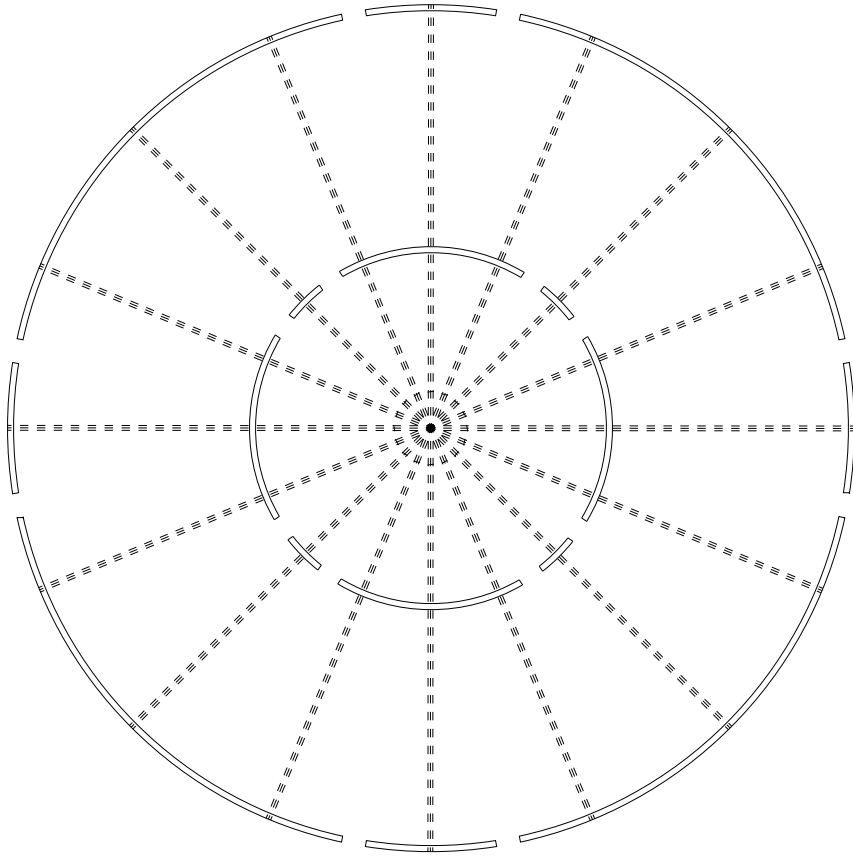
0 1 2 5 10 20

*The Library*  
plan and section

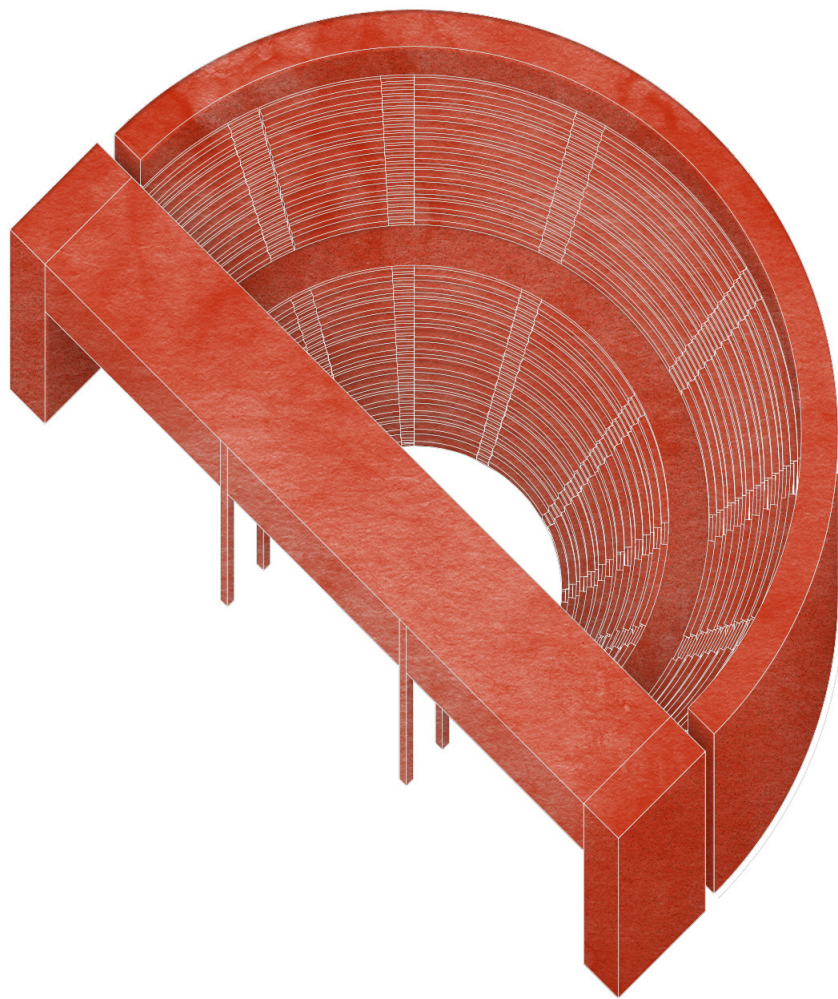




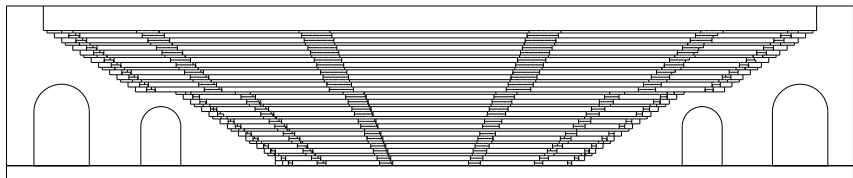
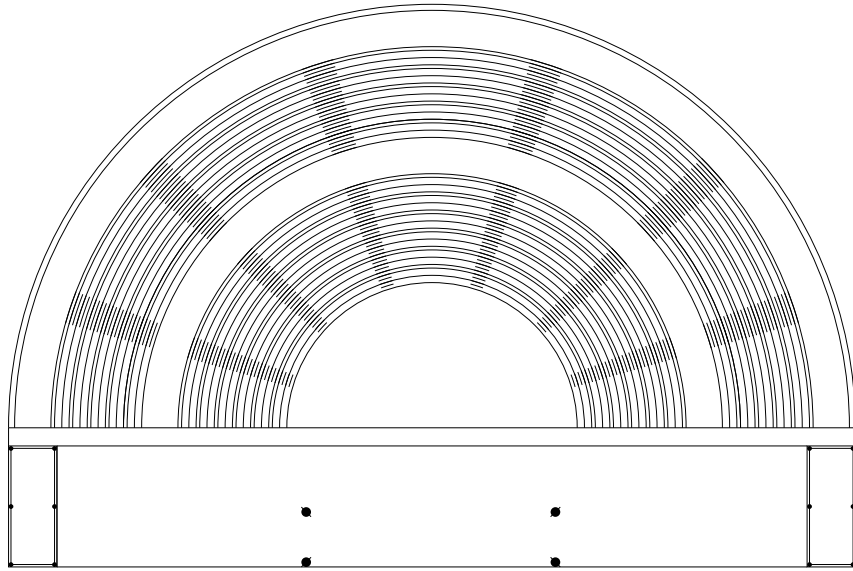
*The Exhibition Hall*  
axonometric view



*The Exhibition Hall*  
plan and section

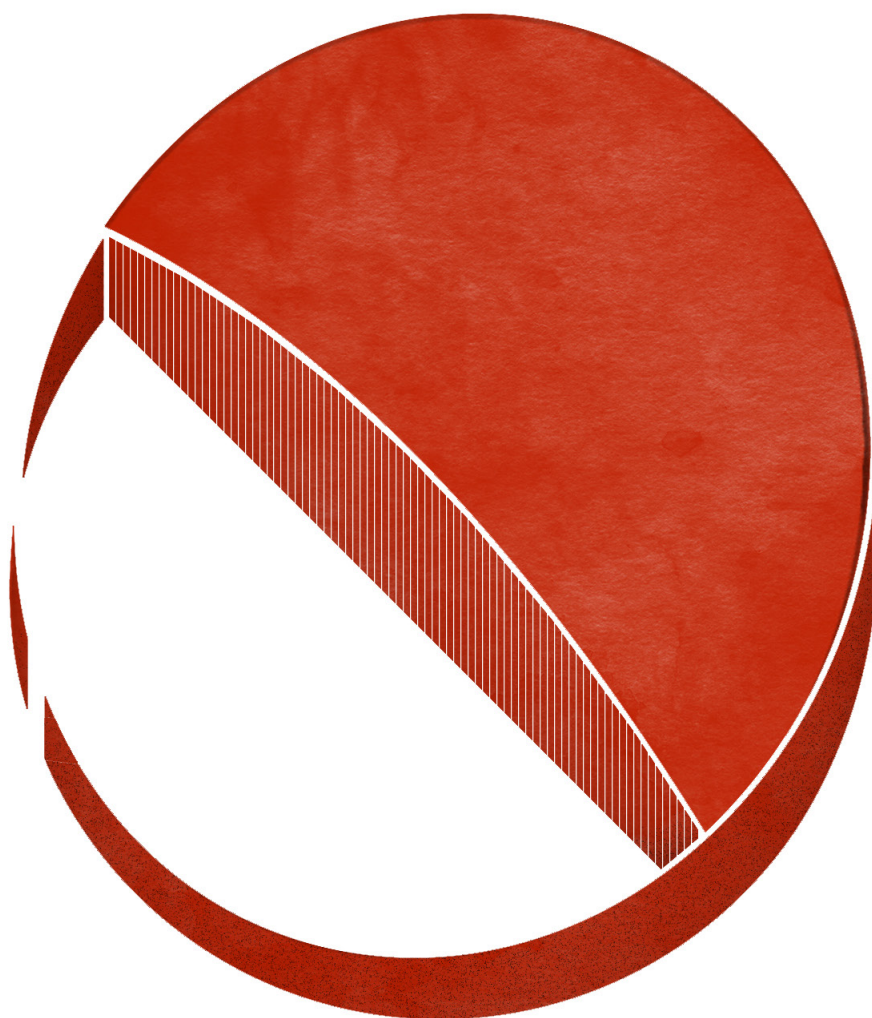


*The Theatre*  
axonometric view

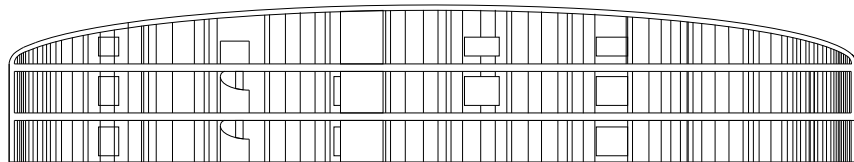
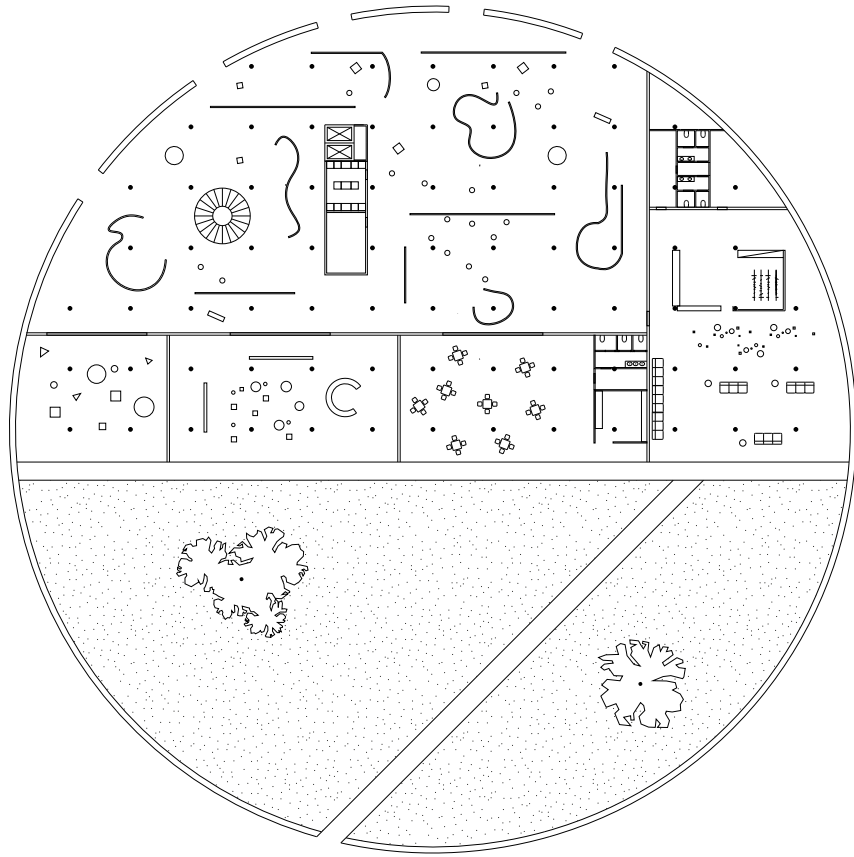


0 1 2 5 10 20

*The Theatre*  
plan and section

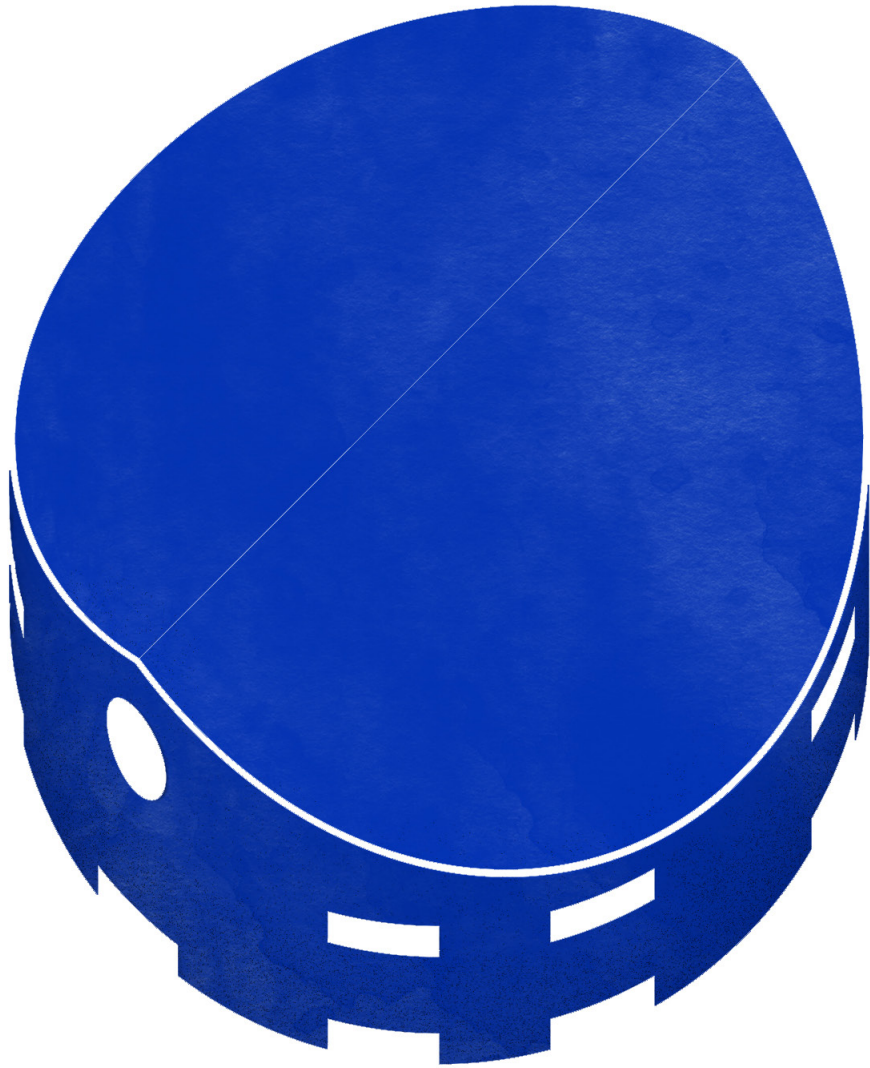


*The Heritage Museum*  
axonometric view

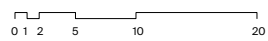
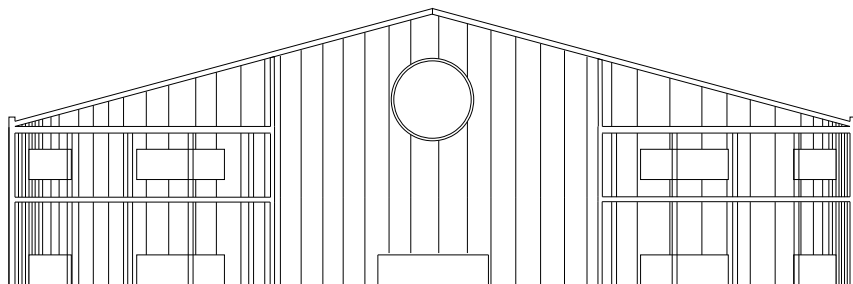
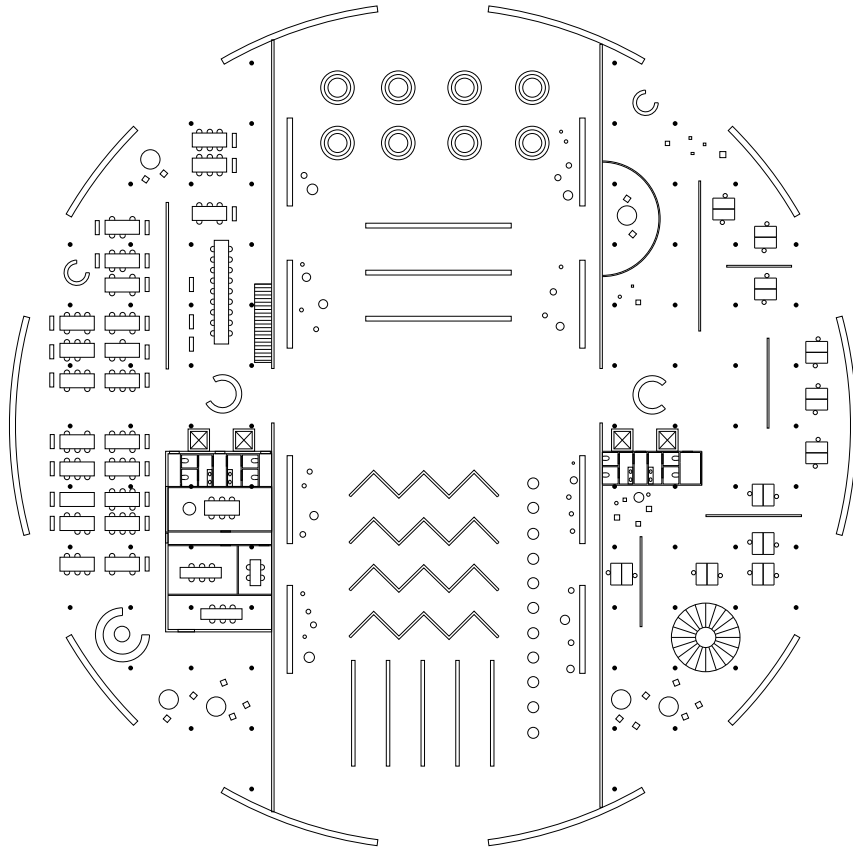


0 1 2 5 10 20

*The Heritage Museum*  
plan and section

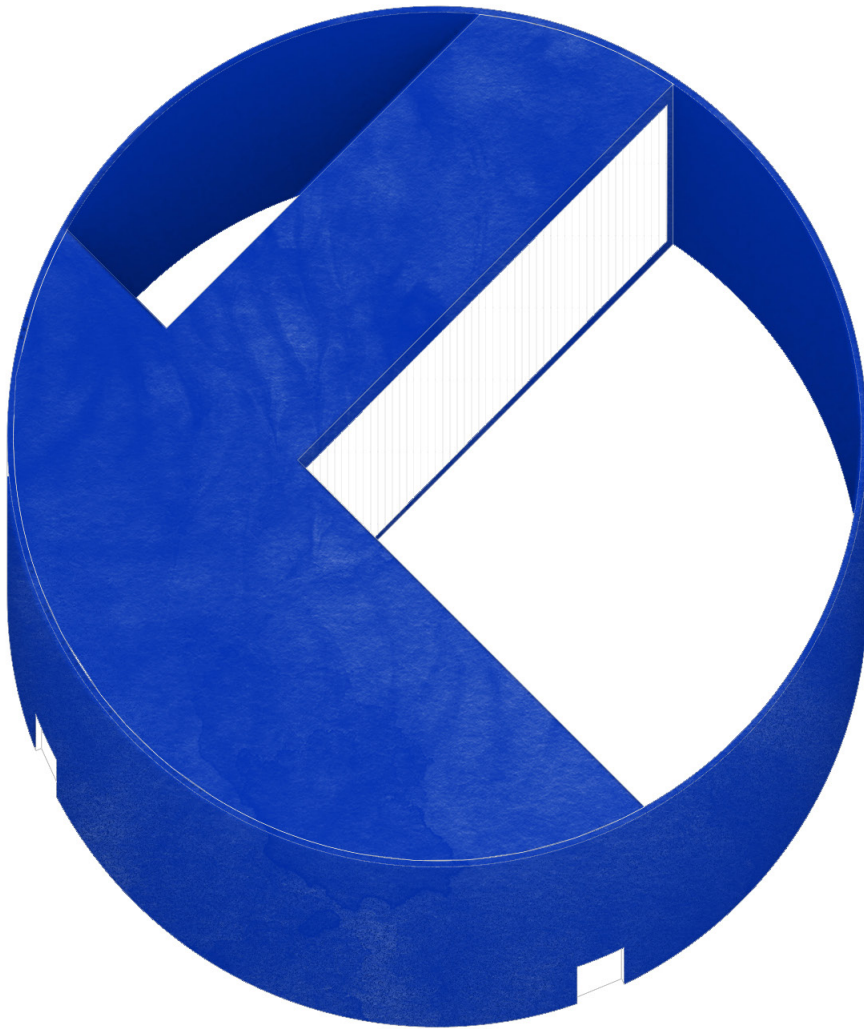


*The Offices and Co Working Spaces*  
axonometric view

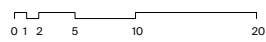
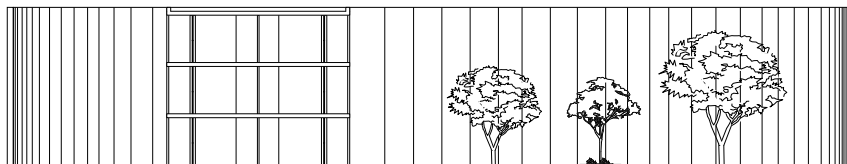
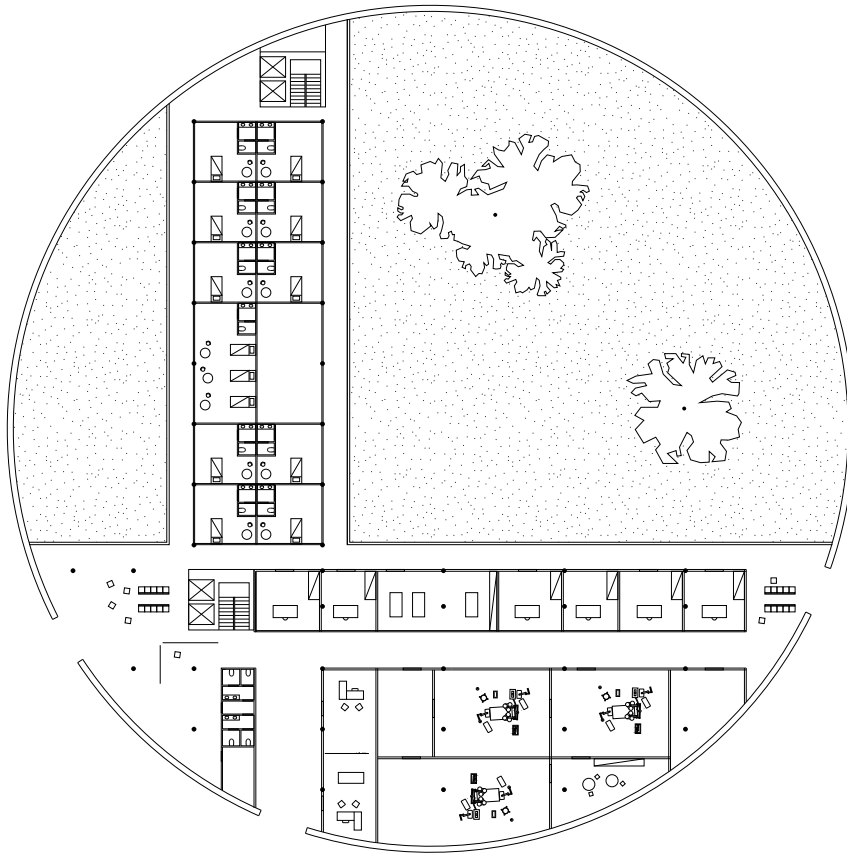


*The Offices and Co Working Spaces*  
plan and section

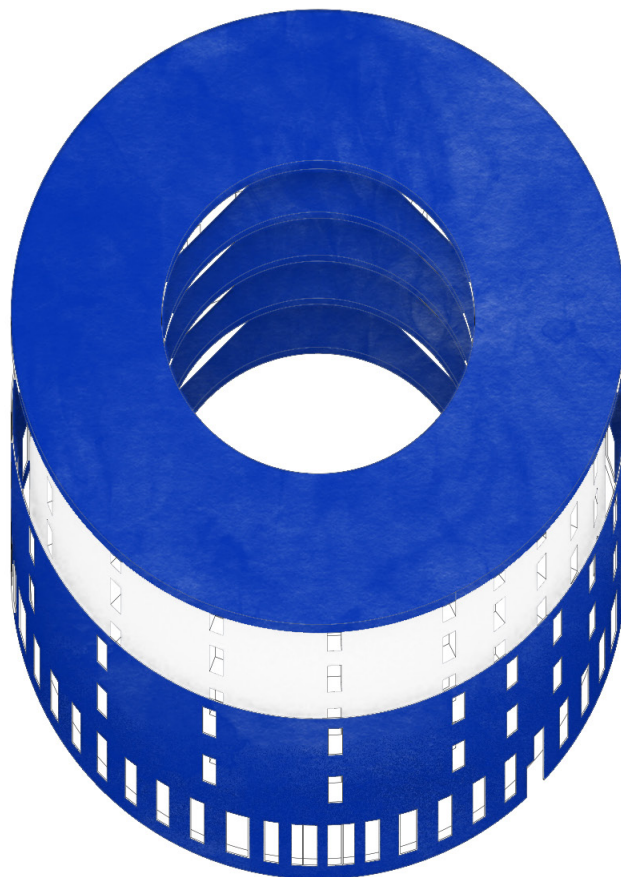




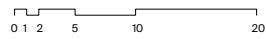
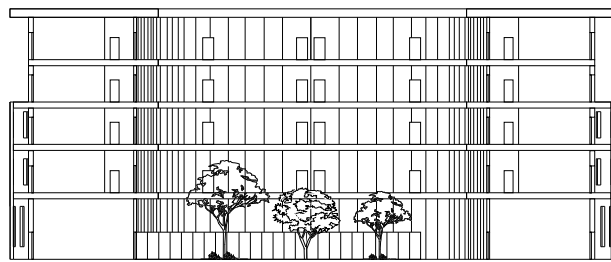
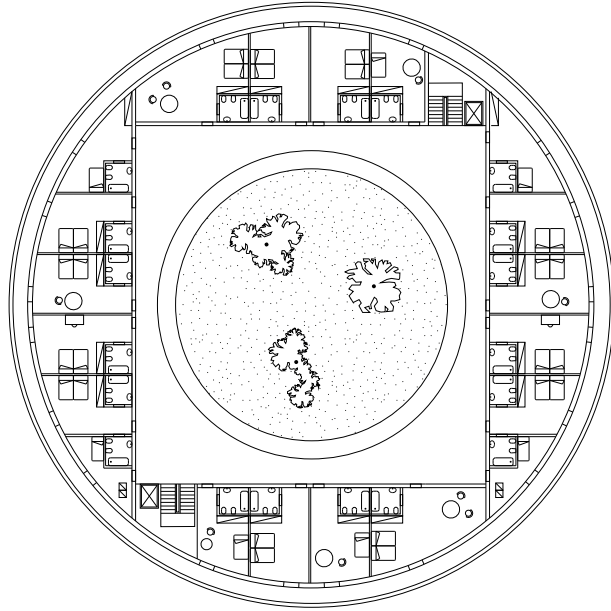
*The First Aid Centre*  
axonometric view



*The First Aid Centre*  
plan and section



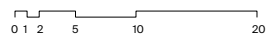
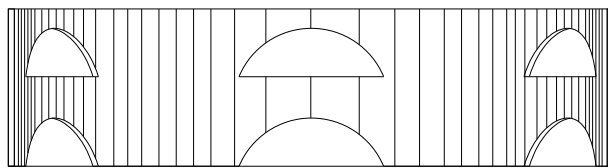
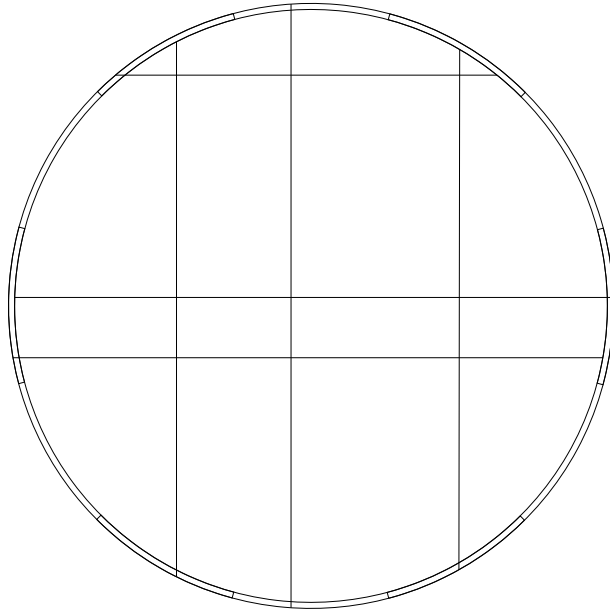
*The Hotel*  
axonometric view



*The Hotel*  
plan and section



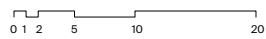
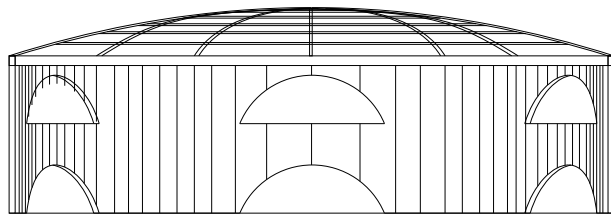
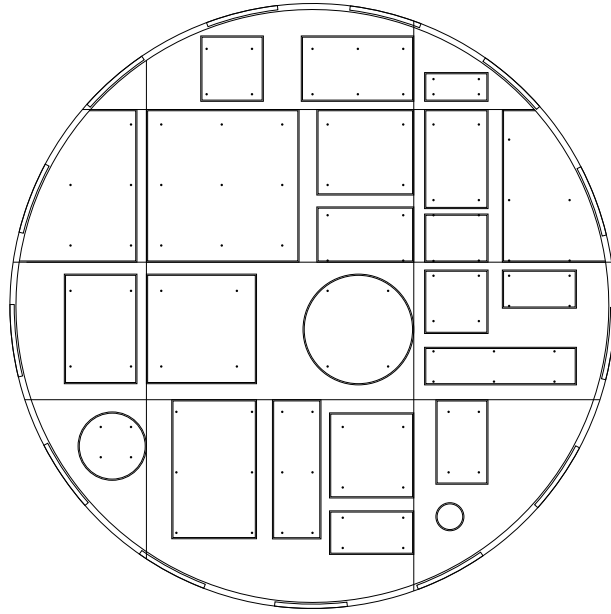
*The Square*  
axonometric view



*The Square*  
plan and section



*The Market*  
axonometric view

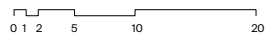
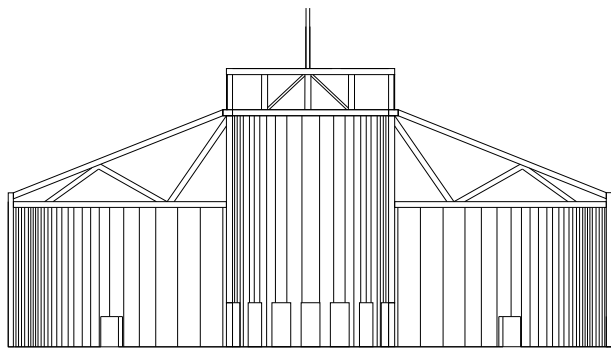
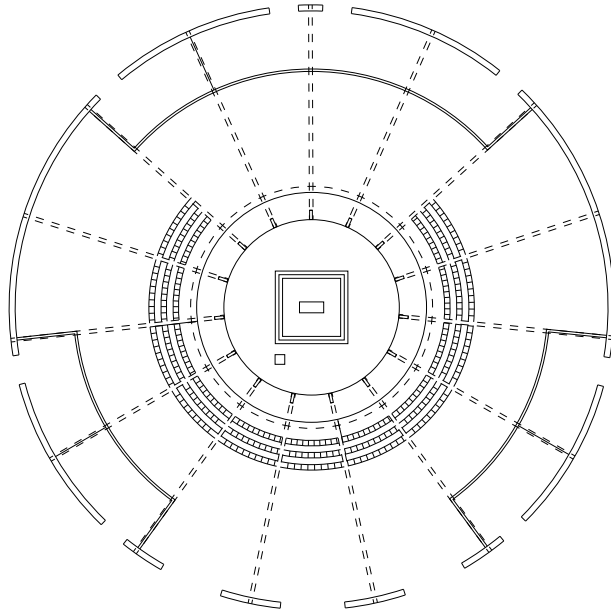


*The Market*  
plan and section

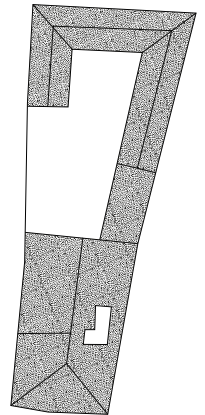
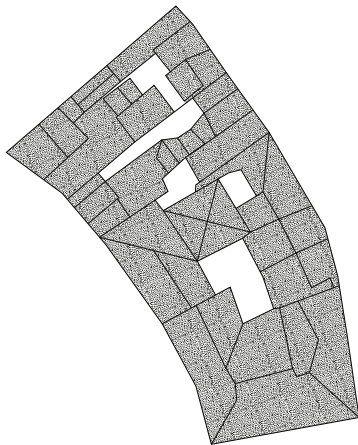
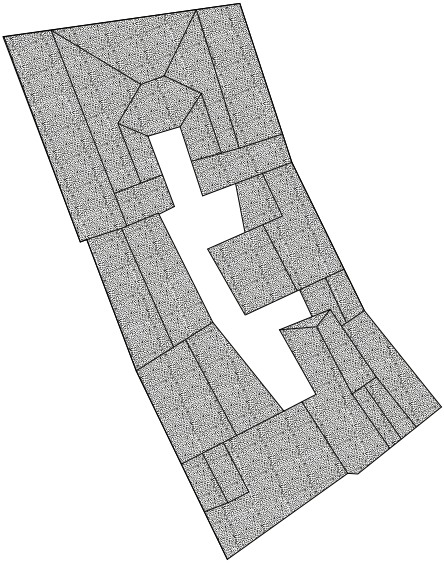
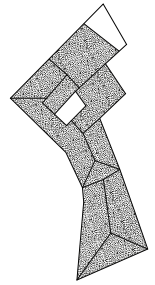
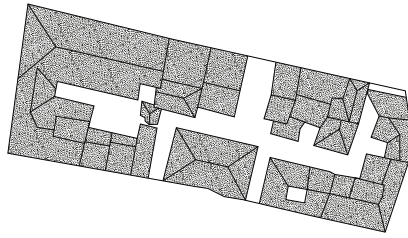
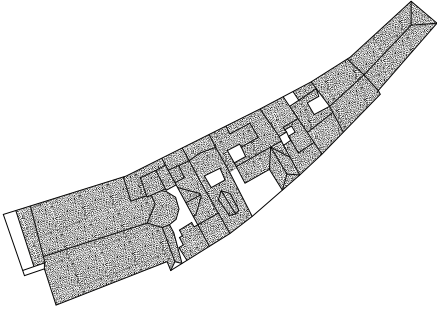
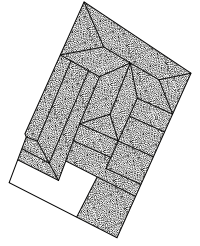
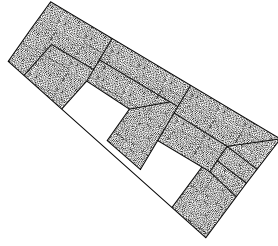
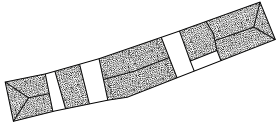


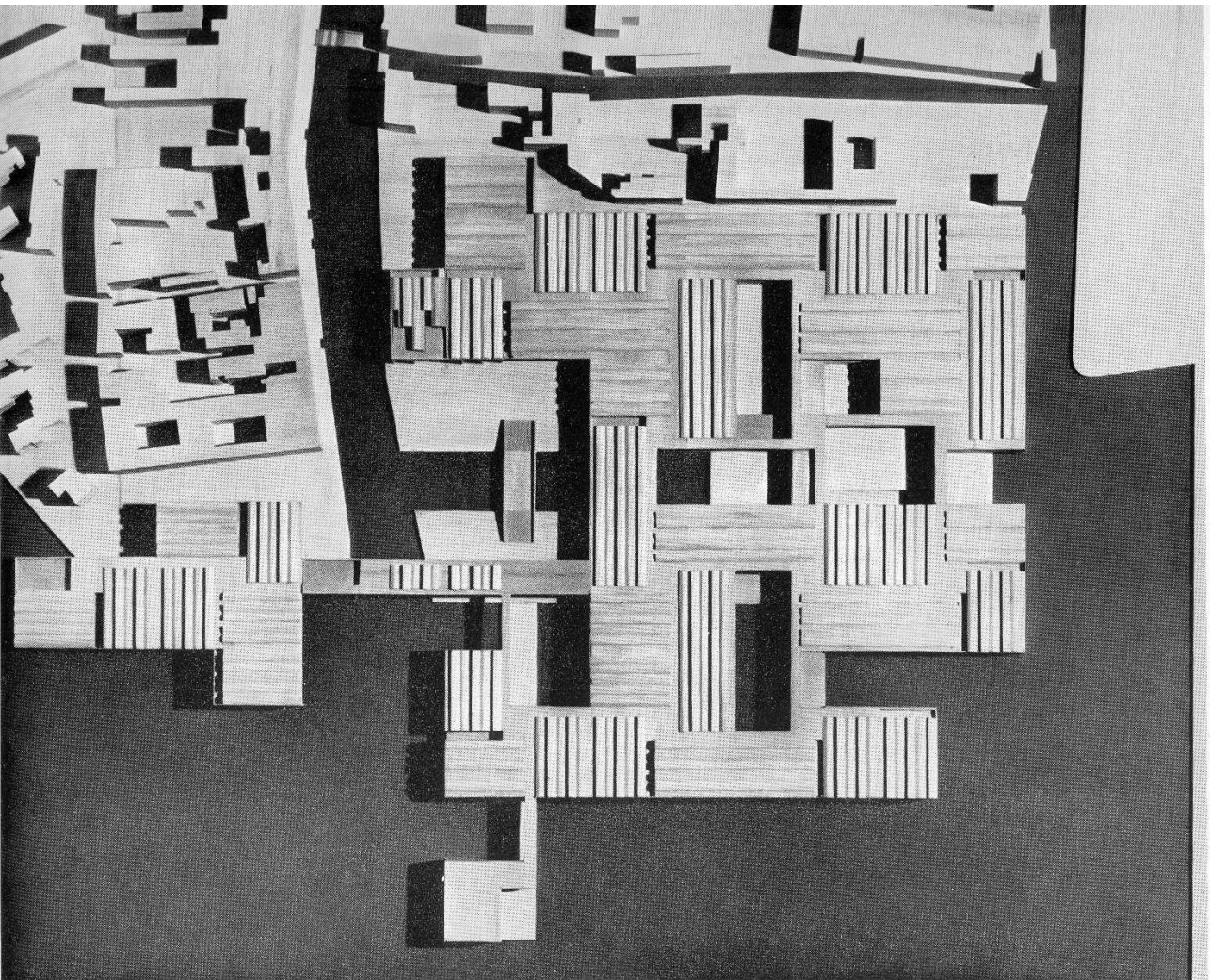


*The Church*  
axonometric view



*The Church*  
plan and section

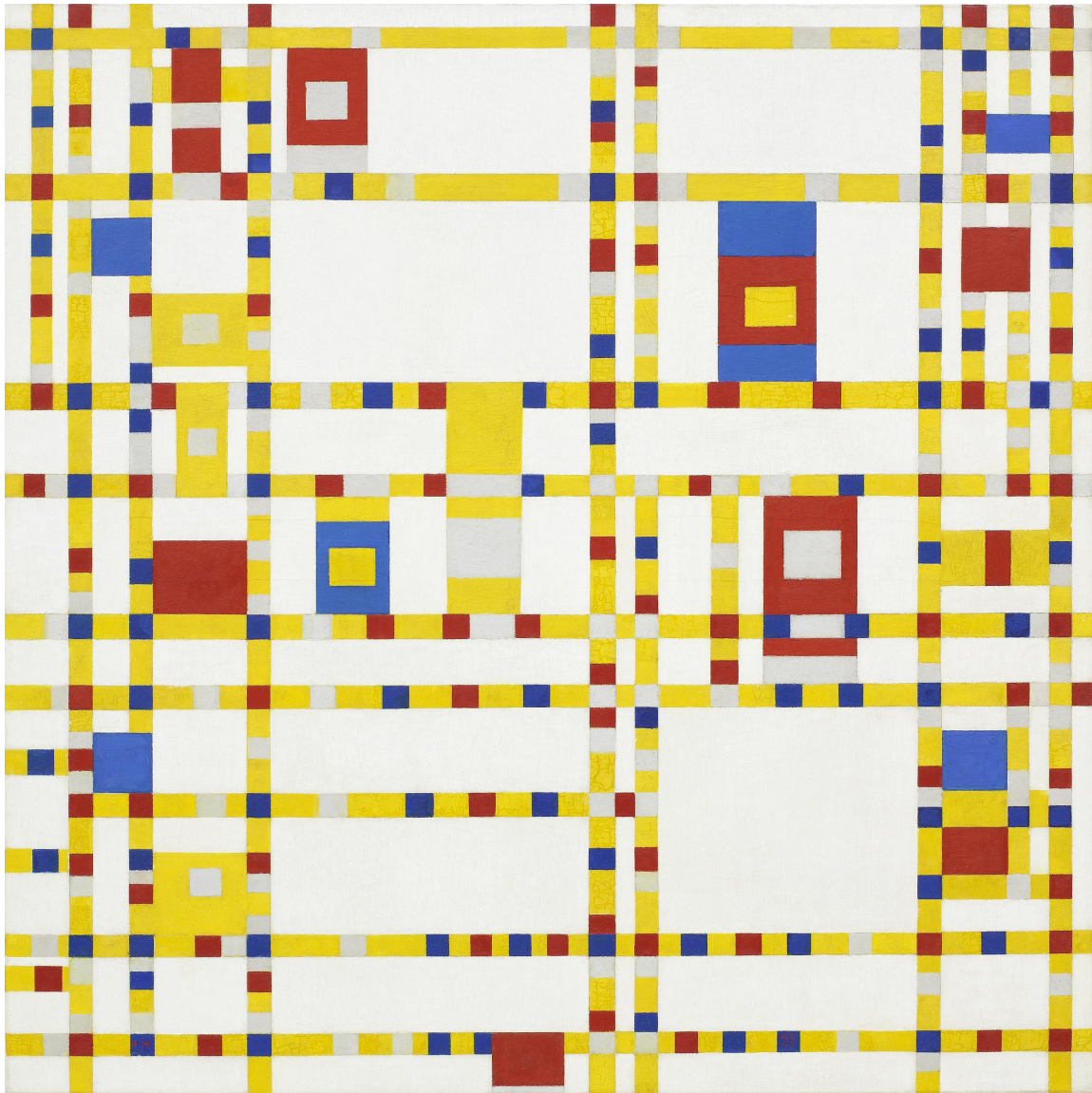




Le second projet (1965). La maquette du nouvel hôpital de Venise

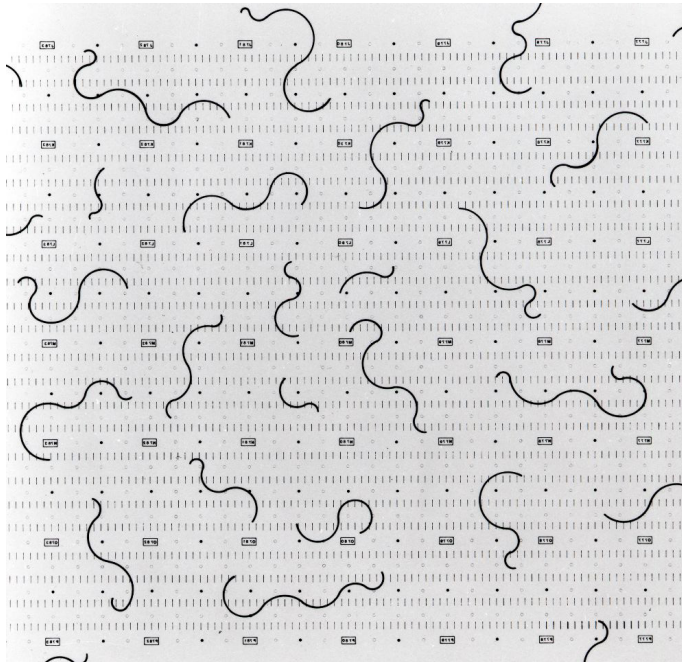
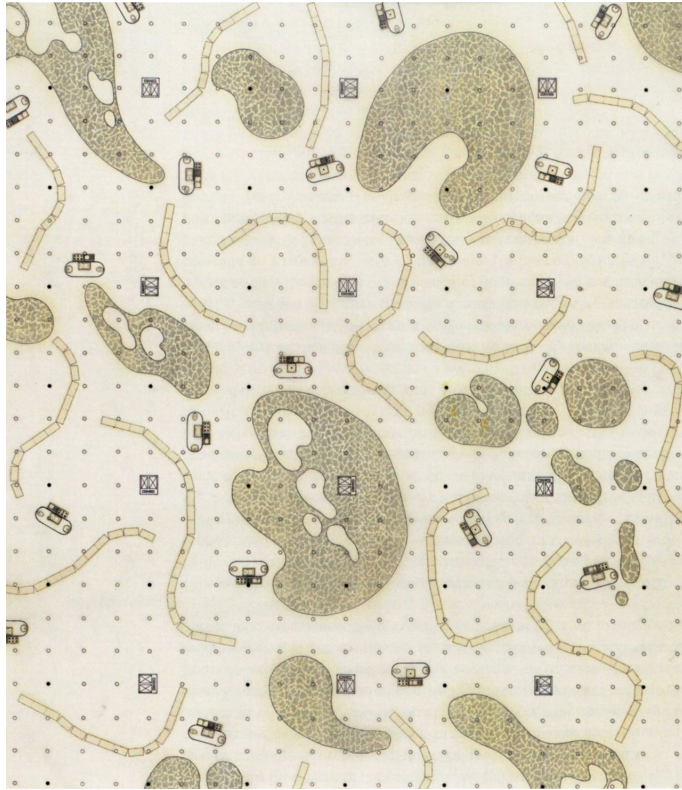
### *References*

le corbusier , un nouvel hopital a venise



*References*

piet mondriaan , broadway boogie woogie



*References*

archizoom associati , no-stop city



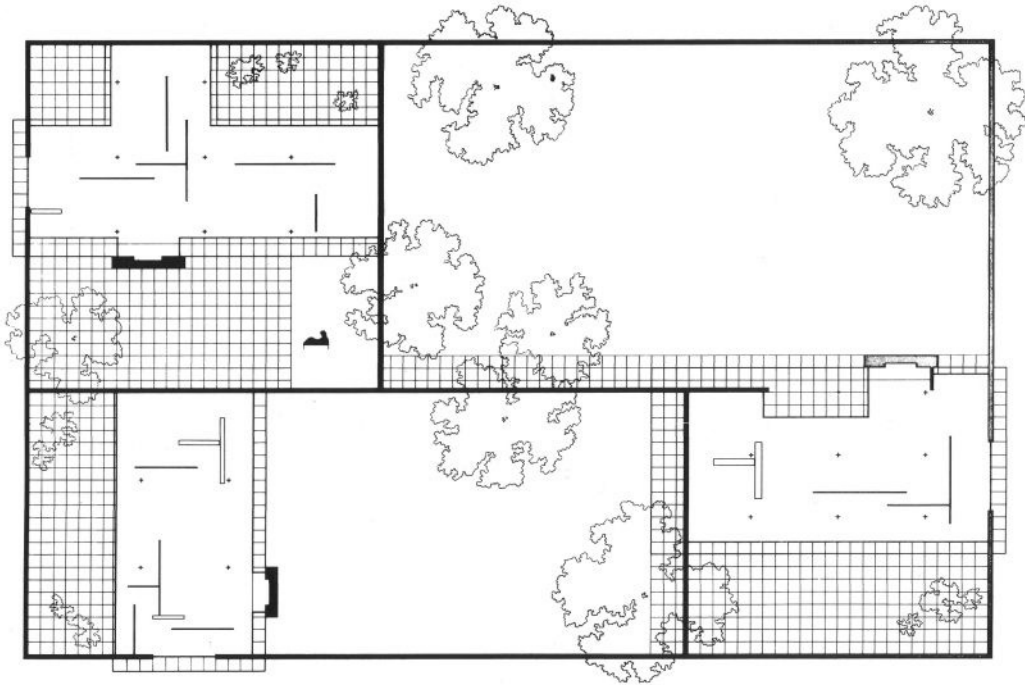
*References*  
borneo sporenburg



*References*

conrad buff and donald hensman , case study house 28





*References*

mies van der rohe , court house project



*References*  
venice courtyards



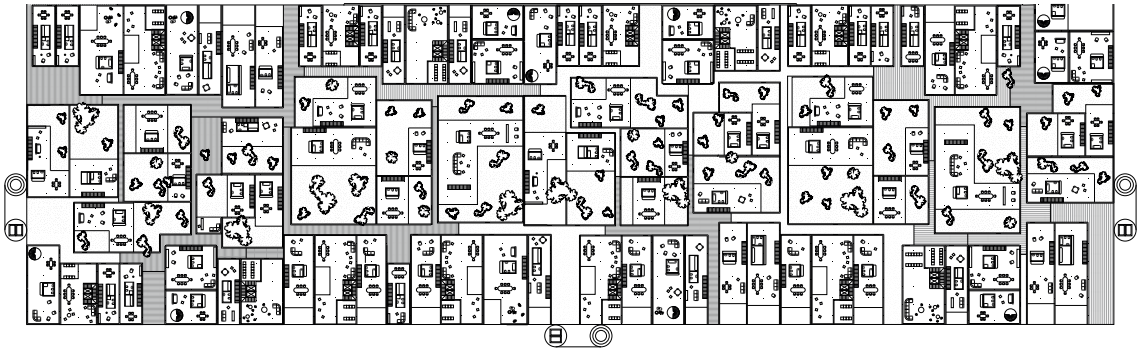
*References*

piazza san marco , walkways during "acqua alta"

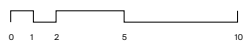
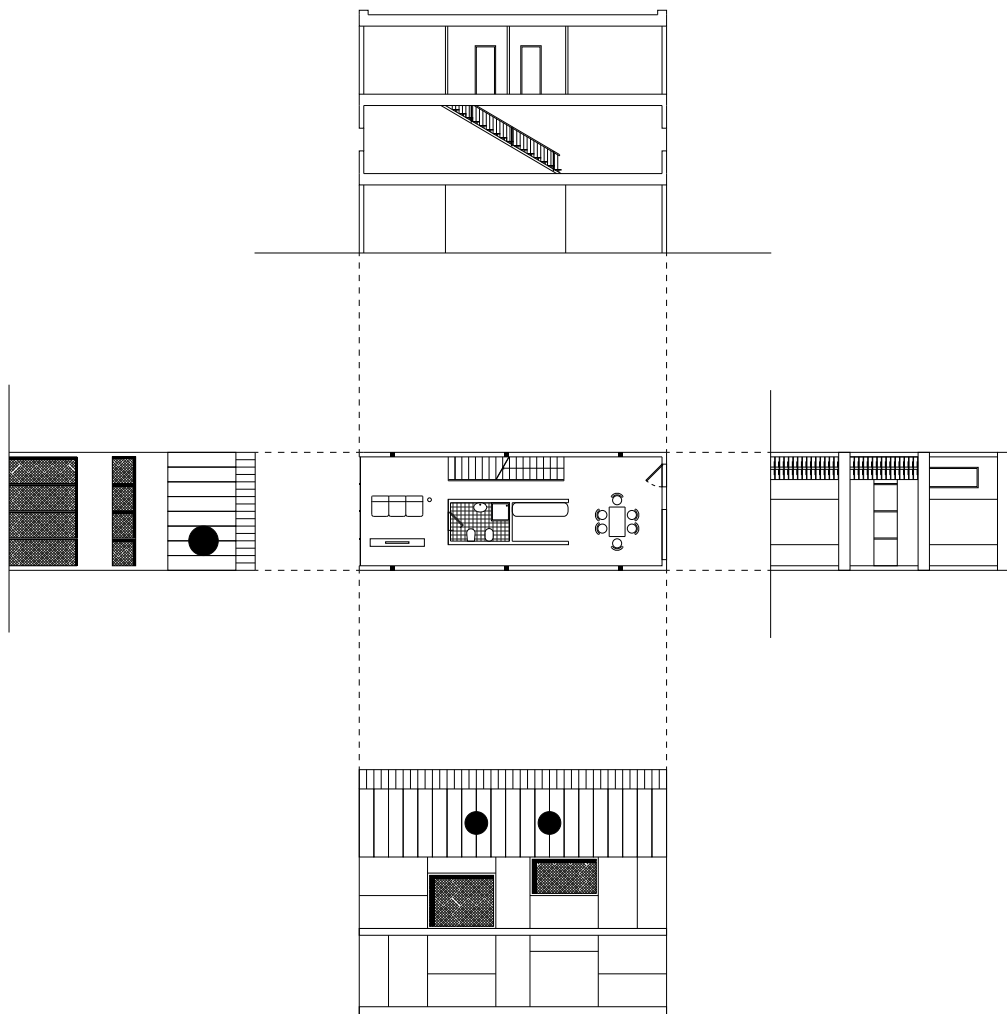
GF



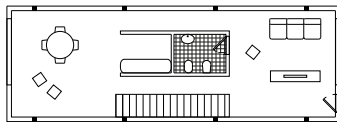
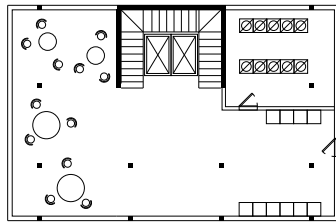
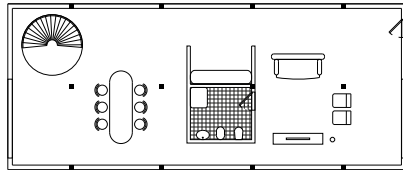
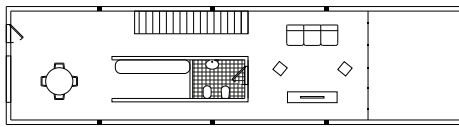
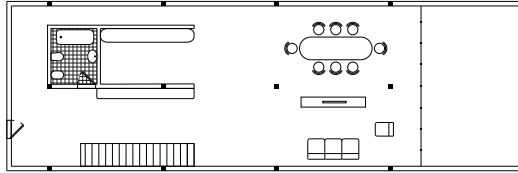
1F



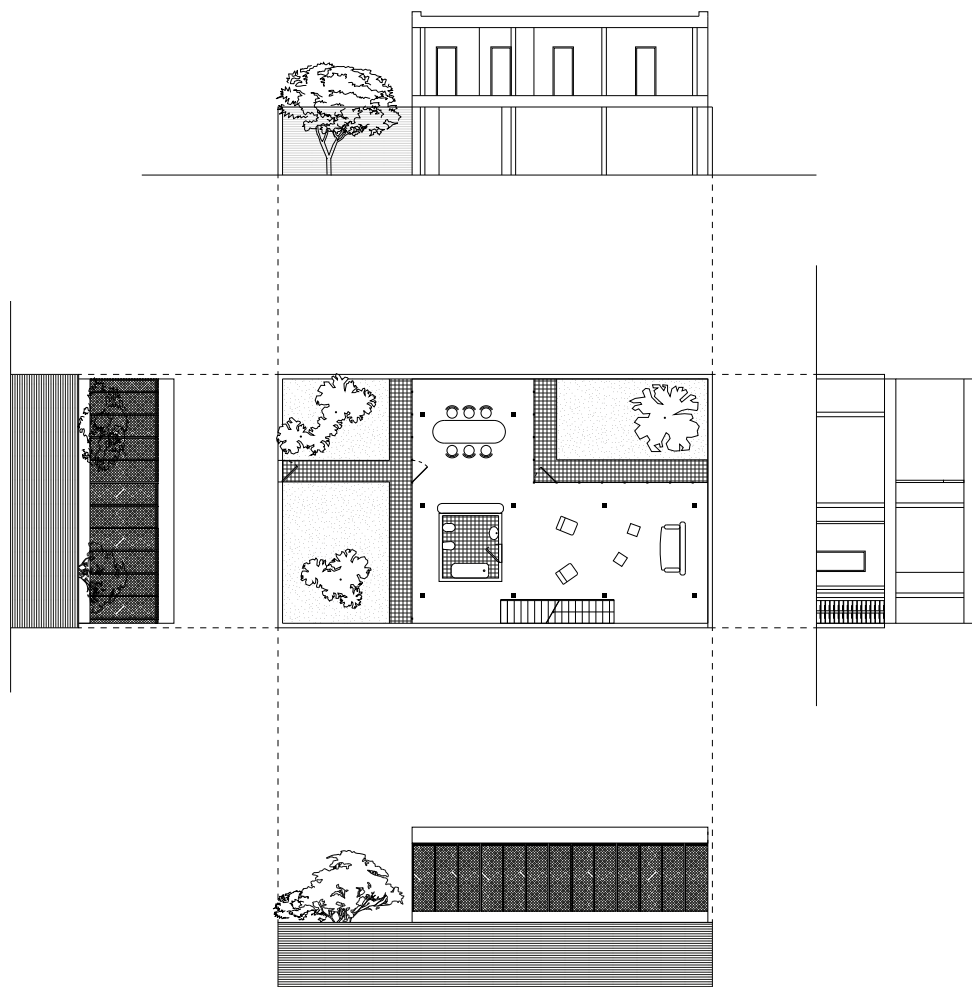
*Plans*



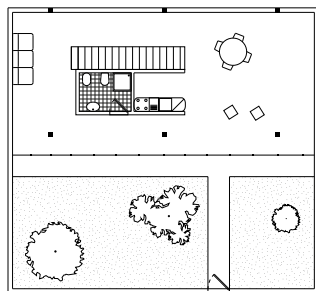
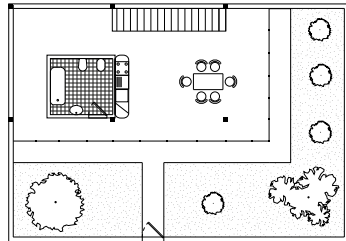
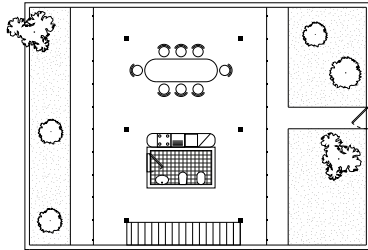
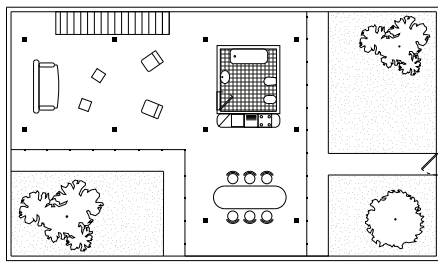
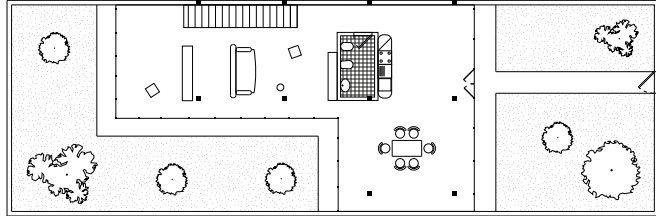
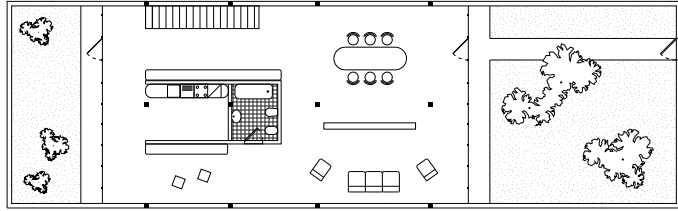
*Row Houses*  
development



*Row Houses*  
typology

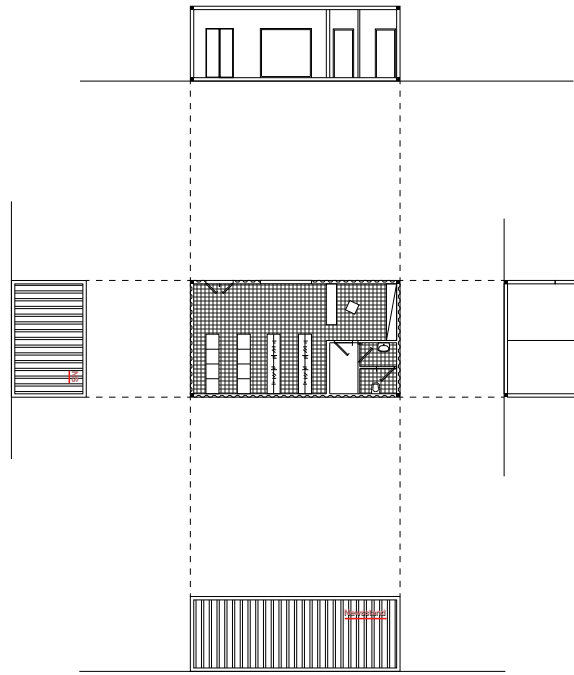


*Courtyard Houses*  
development

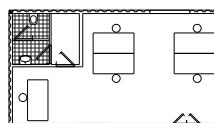
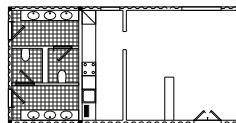
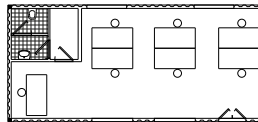
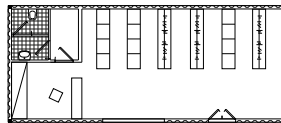
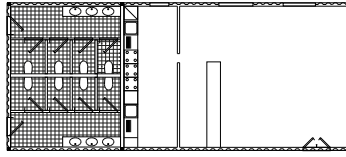


*Courtyard Houses*  
typology





*Commercial Activities*  
development



*Commercial Activities*  
typology