

Organisational change towards sustainable futures

A tool for Livework to enable organisations to think in sustainable and thriving systems.


Why


Context: As sustainability becomes one of the critical topics of our times, organisations seek guidance on feasible and pragmatic ways to implement the same.

To reduce this know-do gap, the thesis collaboration between Livework and Technical University of Delft explored the problem statement: 'How can we use Livework's approach for organisational change for Customer-Centricity for Sustainable Futures?'

How

Applying empirical research and qualitative interview techniques the results and findings help define a vision for Livework: *Enable organisations to think in regenerative and thriving systems and integrate them into the fabric of the organisation.* To make the vision a reality, a roadmap, guiding principles and specific goals are defined to address this opportunity by:

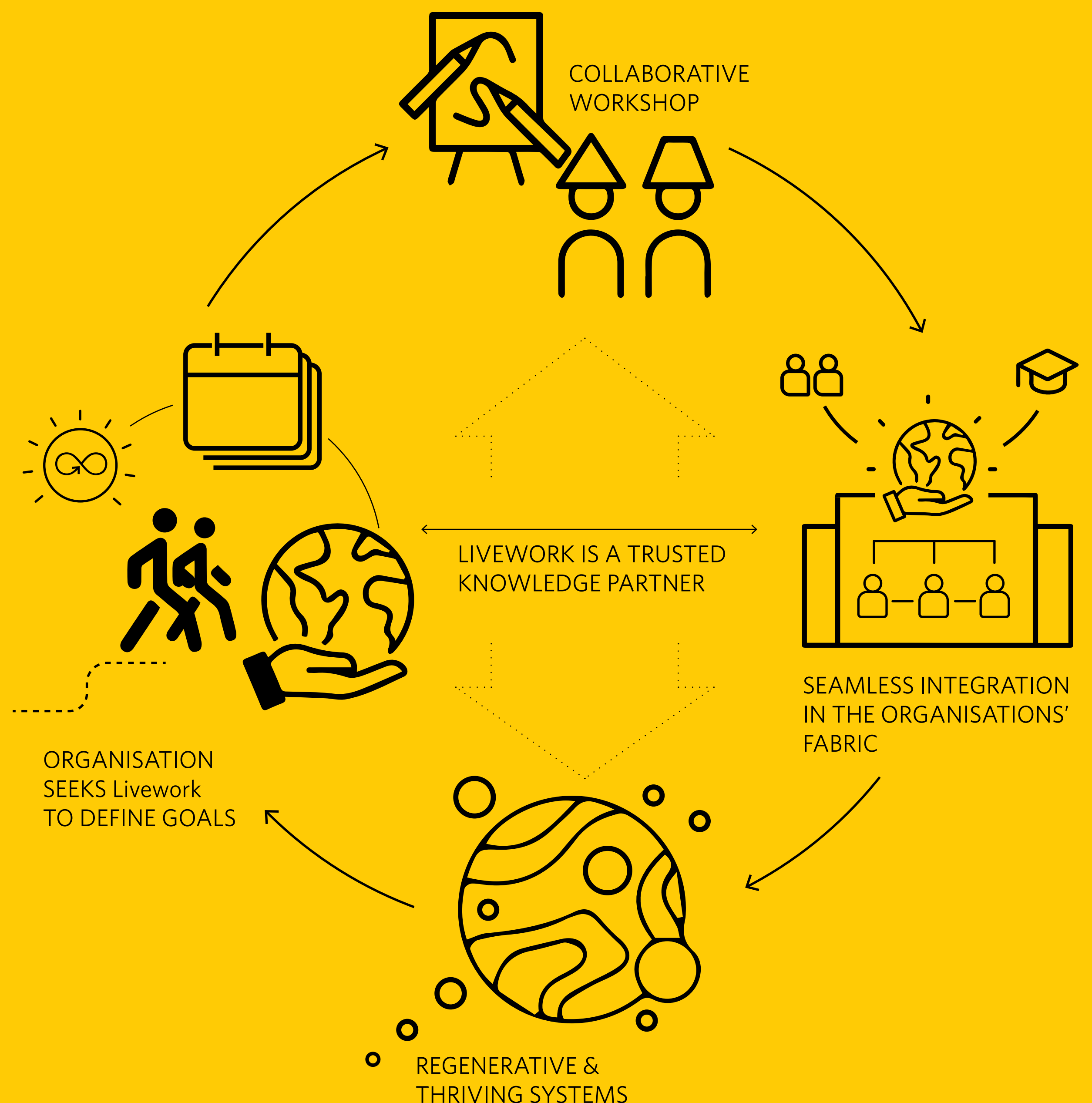
 Find deep leverage points to address the causes of unsustainability

 Collaboratively work towards embedding eco-social goals into the organisations fabric.

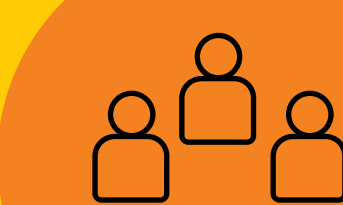
What

Outcome: Workshop as a tool turns Livework's vision into action. The tool 'workshop: organisation as a garden', imagines an organisation like a garden whose soil or core of the business has to thrive with a network of nurturers and influencers. Using this tool in a collaborative manner with organisations, Livework can help them think in regenerative and thriving systems.

'Sustainable development can be defined as development that meets the needs of the present without compromising the ability of future generations to meet their own needs.' Brundtland, 1987



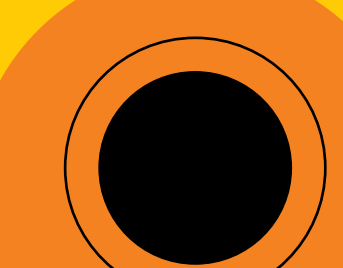
GUIDING PRINCIPLES FOR REGENERATIVE ECOCENTRIC FUTURES



COLLECTIVE



THRIVE



HOLISTIC



LONG-TERM

Priyanka Singh

How can we use Livework's approach to org change for CC for SF?

September 13th, 2020

Msc. Strategic Product Design

Committee

Chair | Prof. dr. Hultink, H.J.

Mentor | Dr. Baldassarre, B.

Company mentor | Anna van der Togt

Problem owner | Livework

Company

Livework