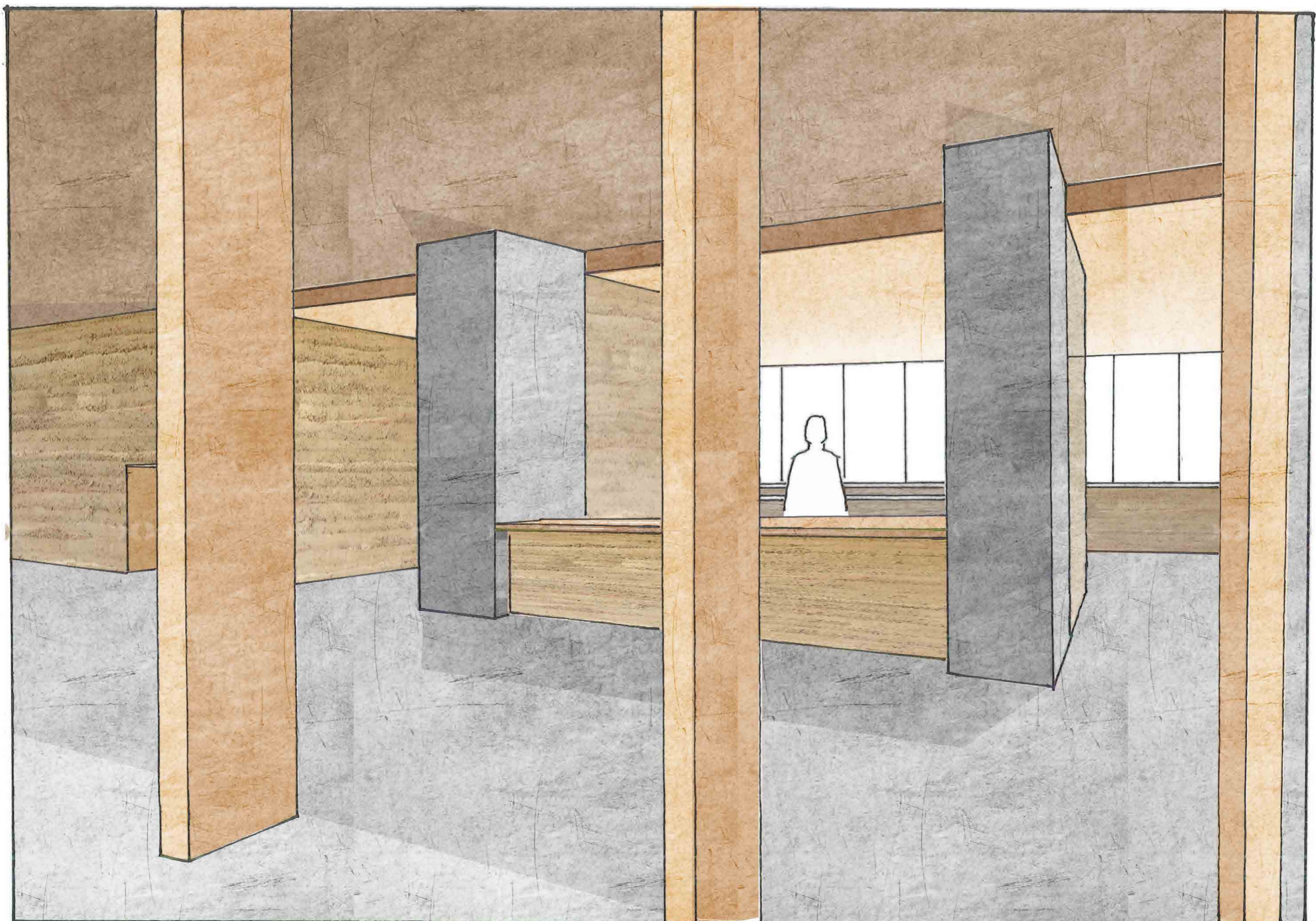
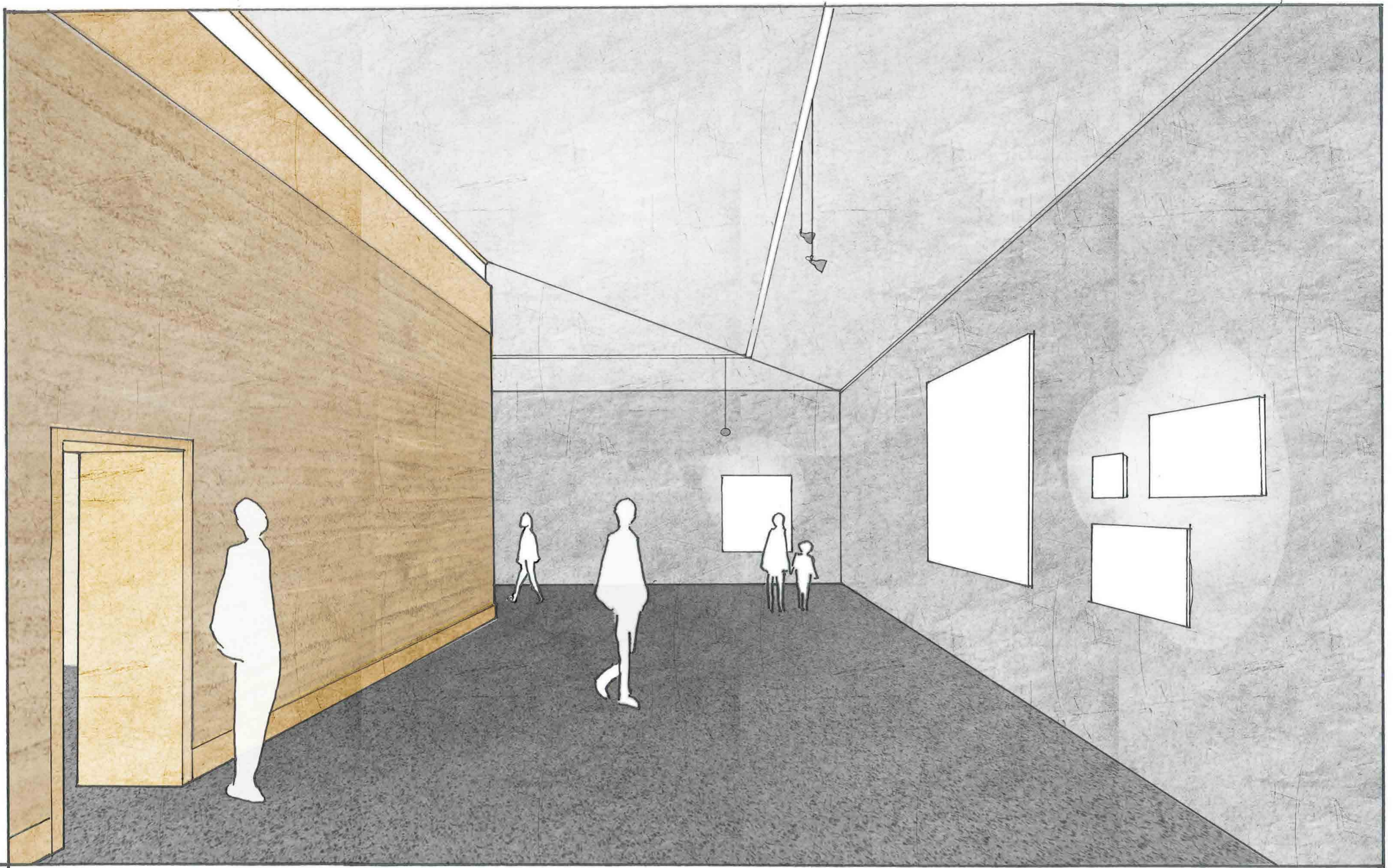




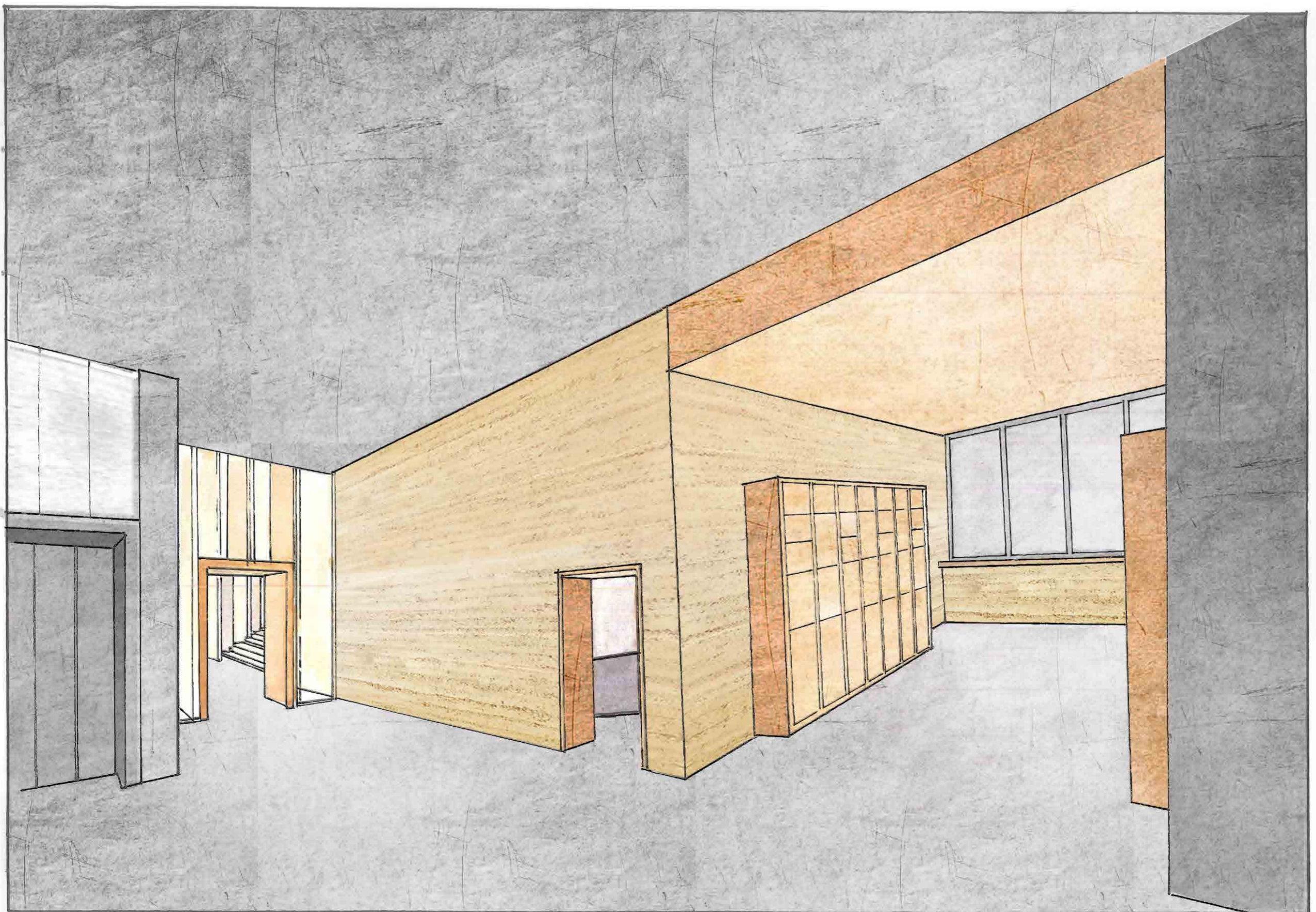
**Museum Entrance**  
perspective view



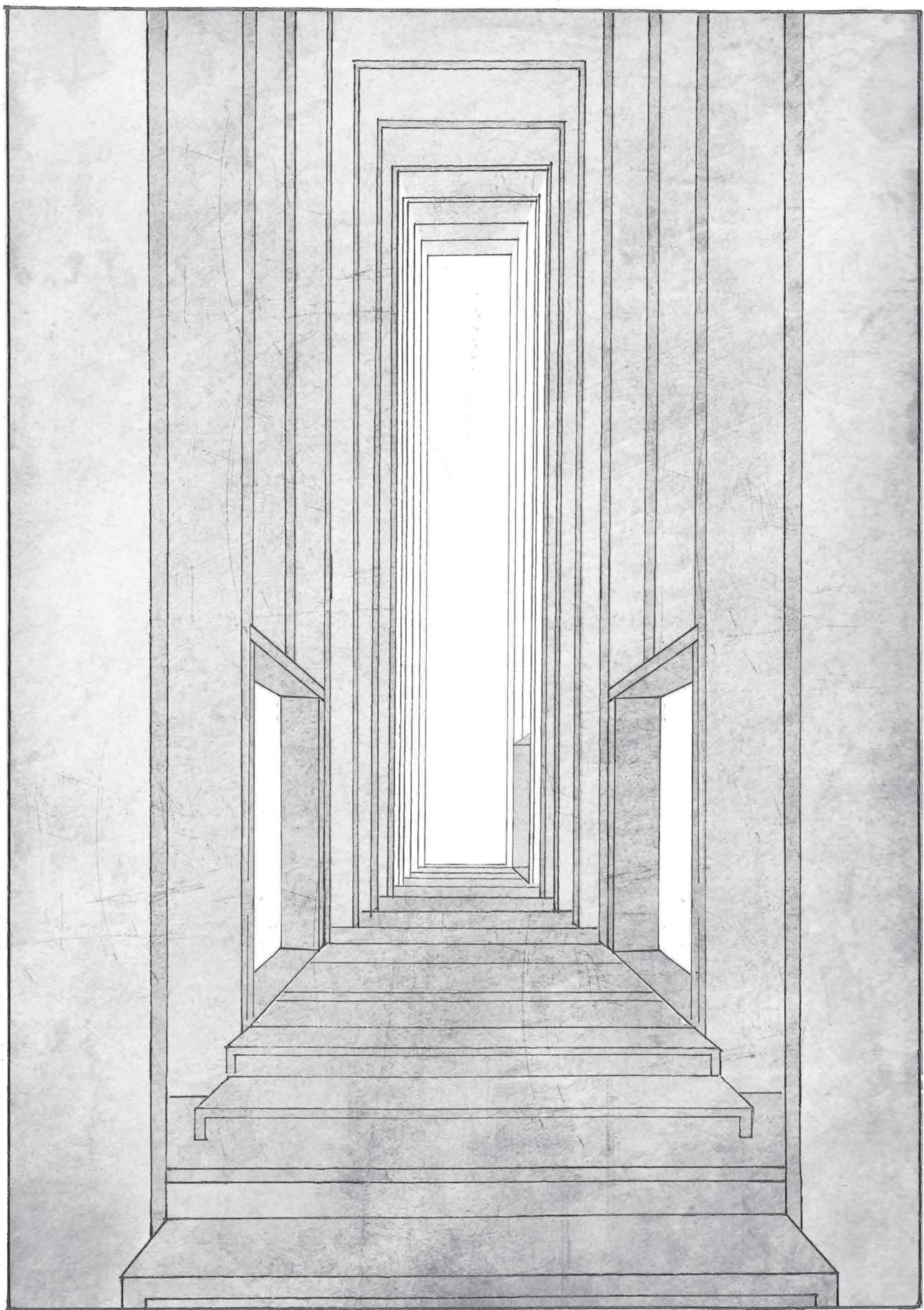
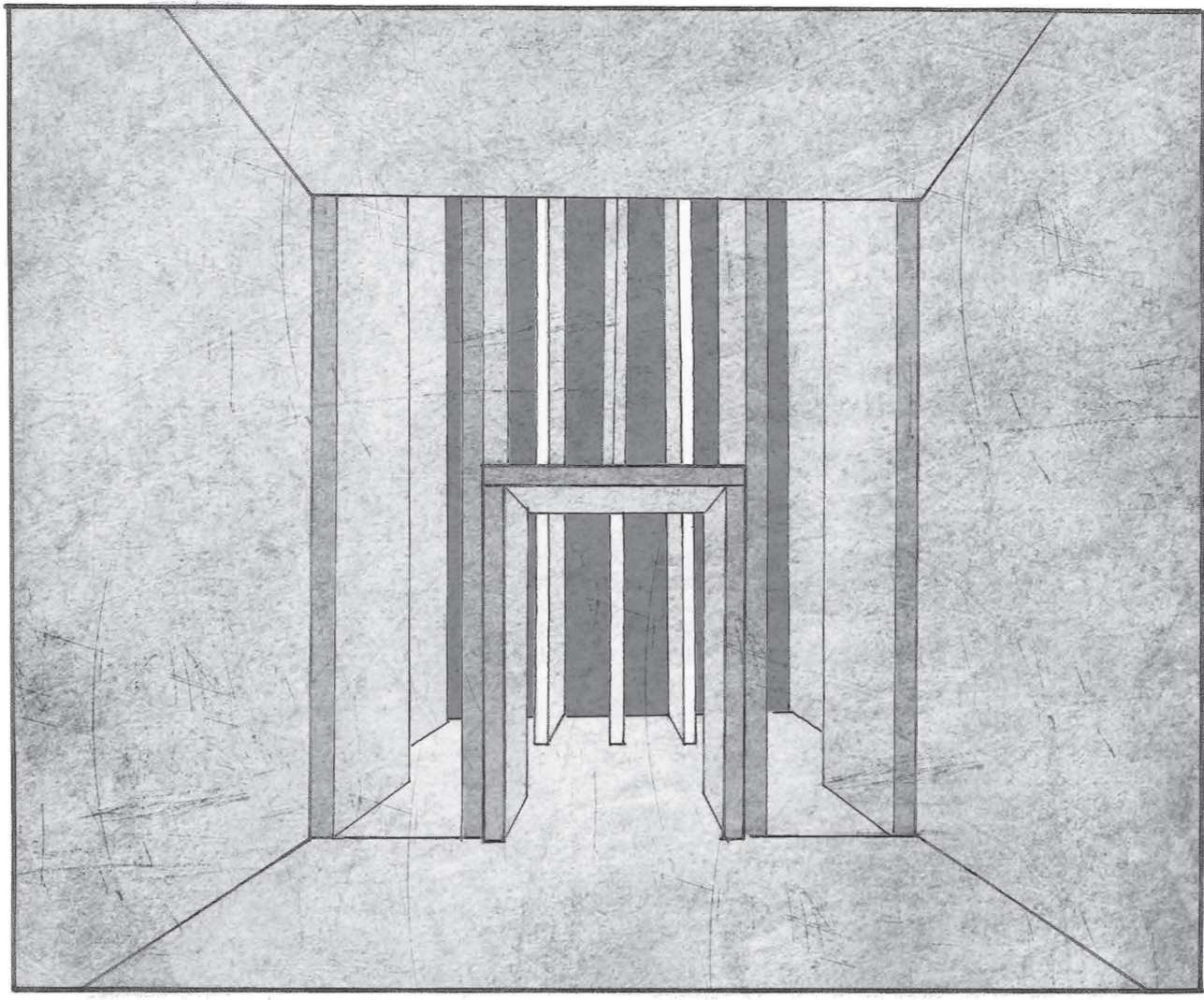
**Museum Hall**  
perspective view



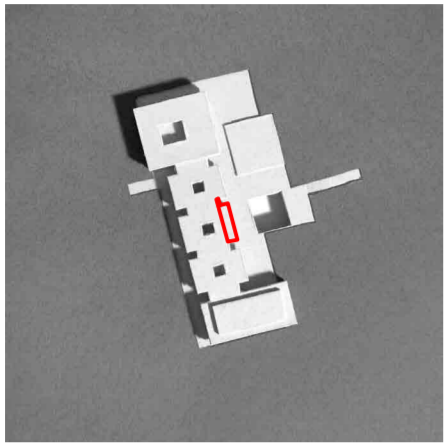
**Exhibition Space**  
perspective view



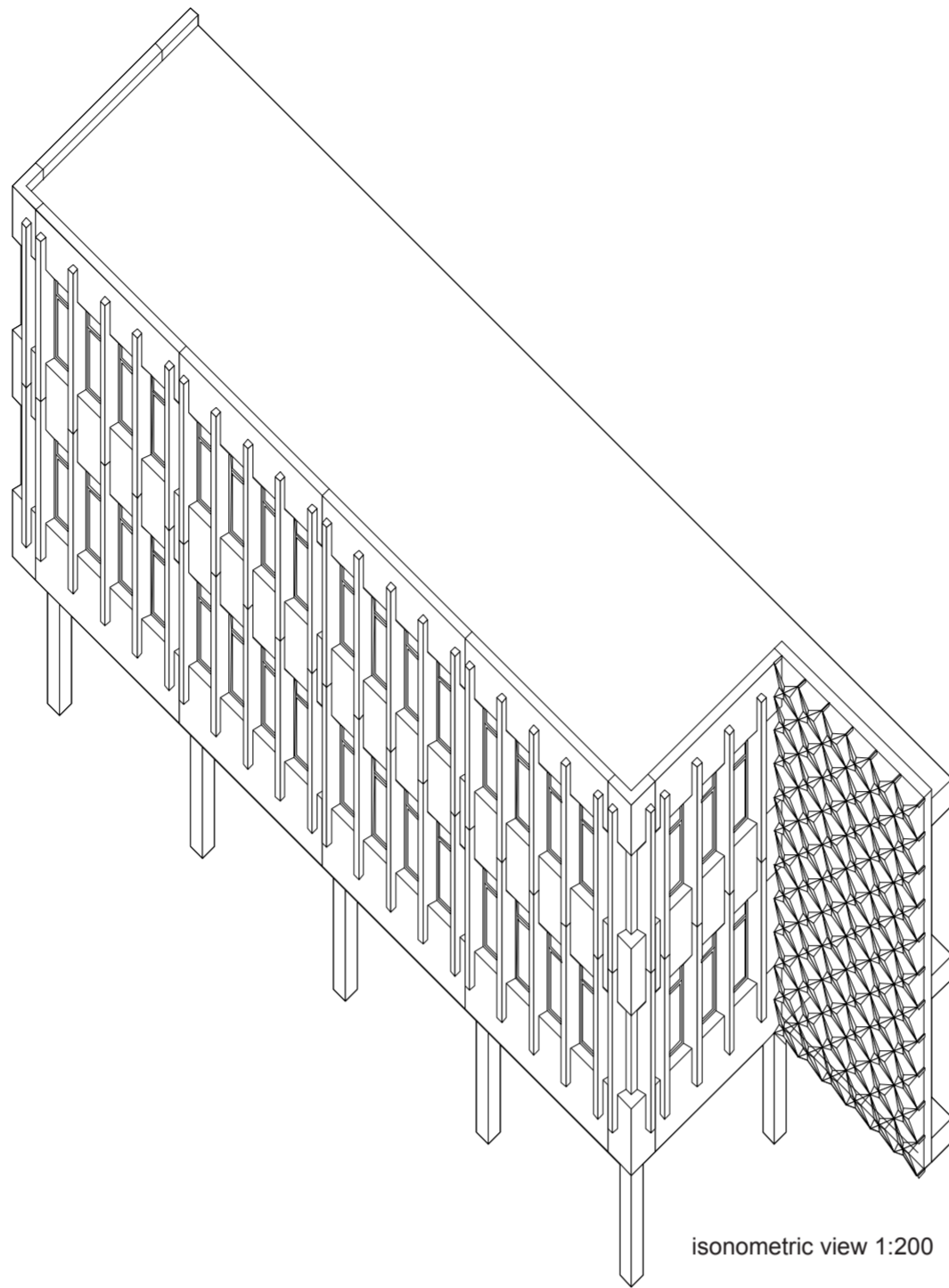
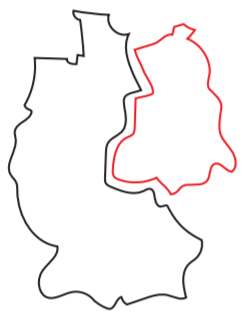
**Cloakroom**  
perspective view



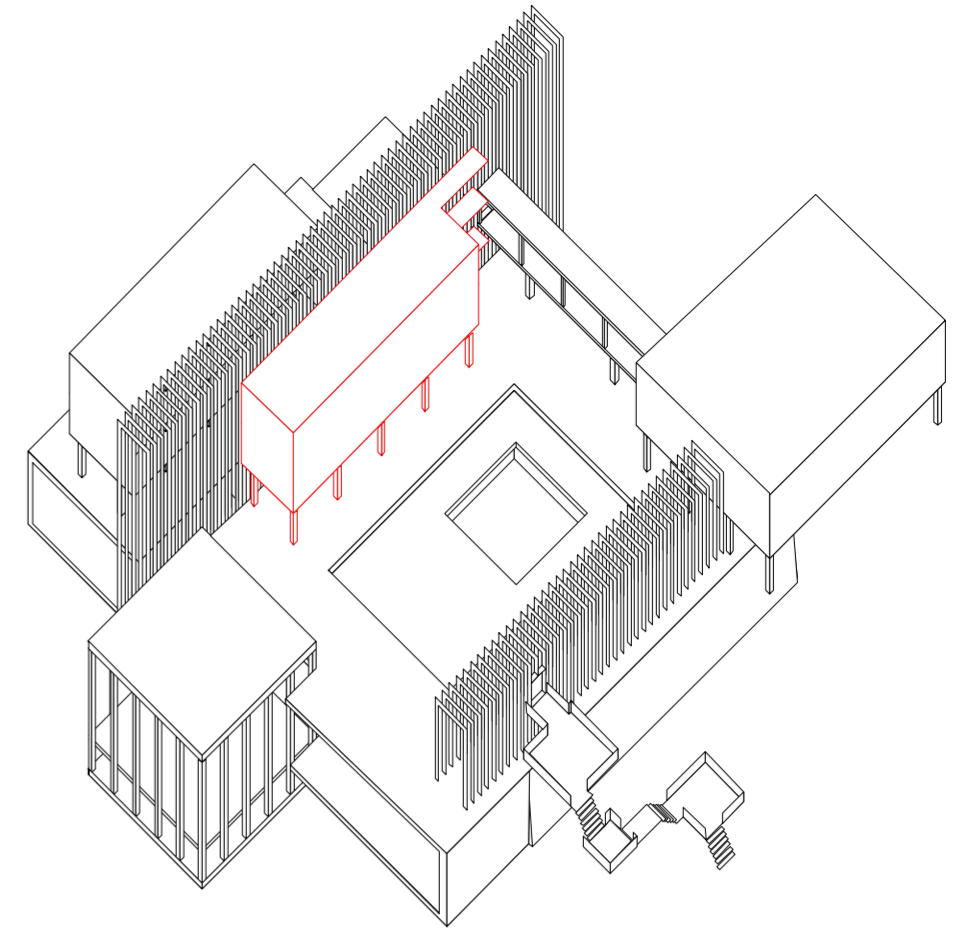
Transition I



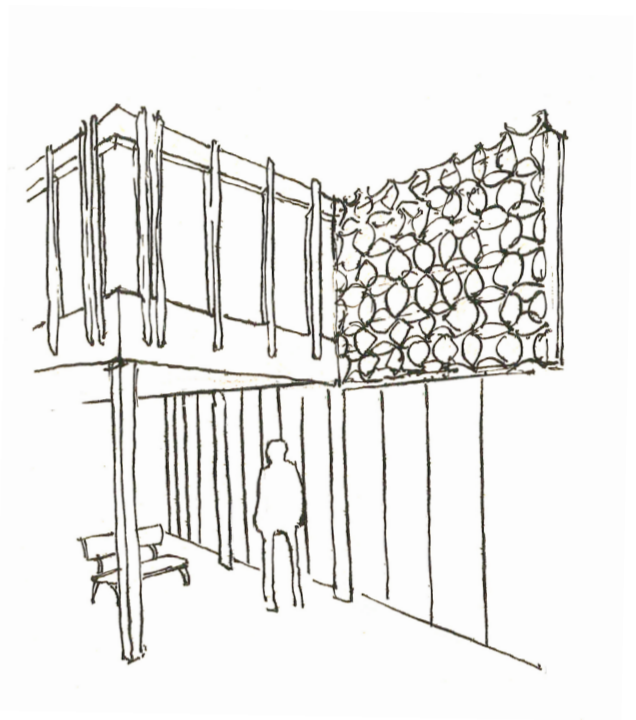
Fachhochschule Potsdam  
built 1970-72  
architect Sepp Weber ursprünglich  
former „Institut für Lehrerbildung“  
demolition planned  
no monument



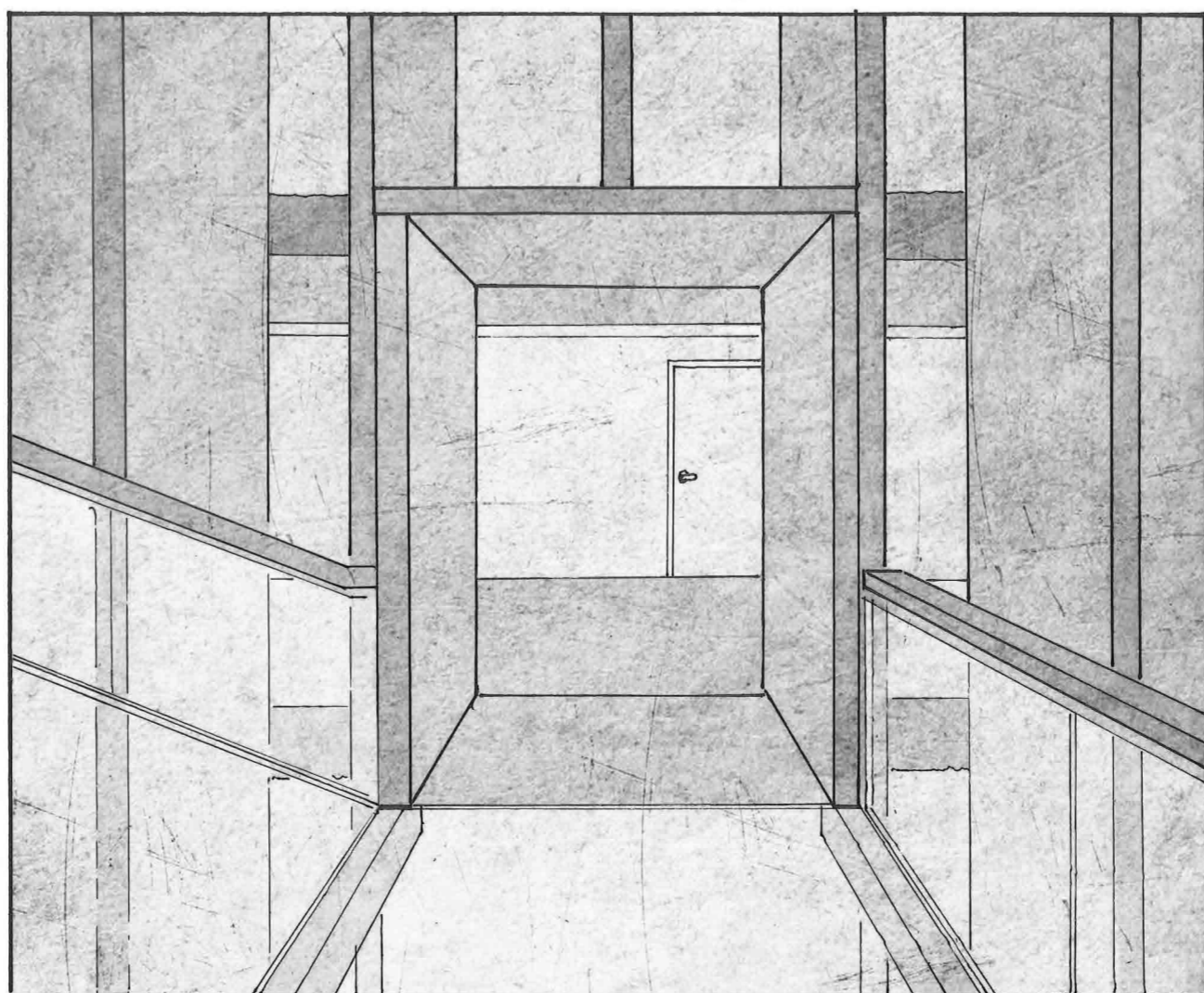
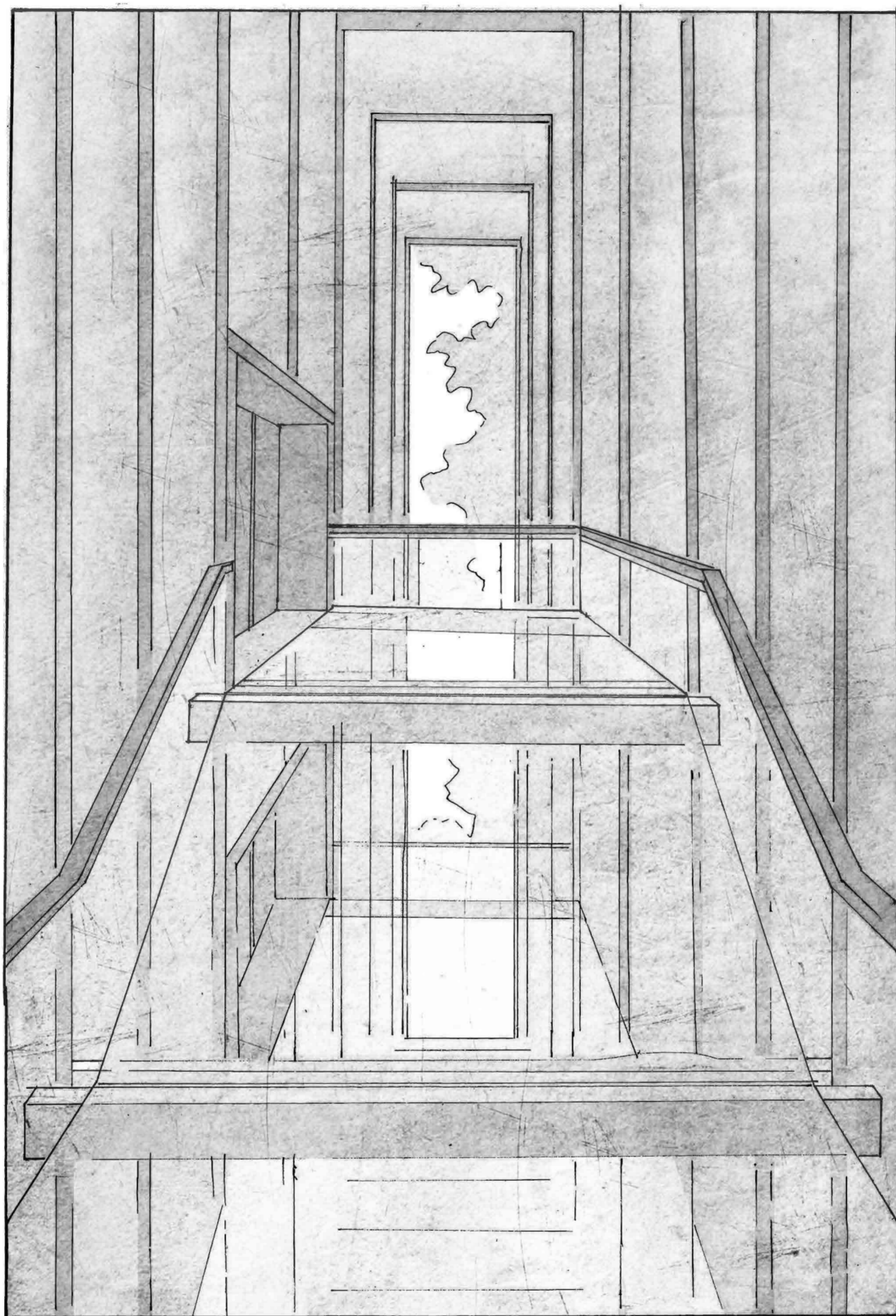
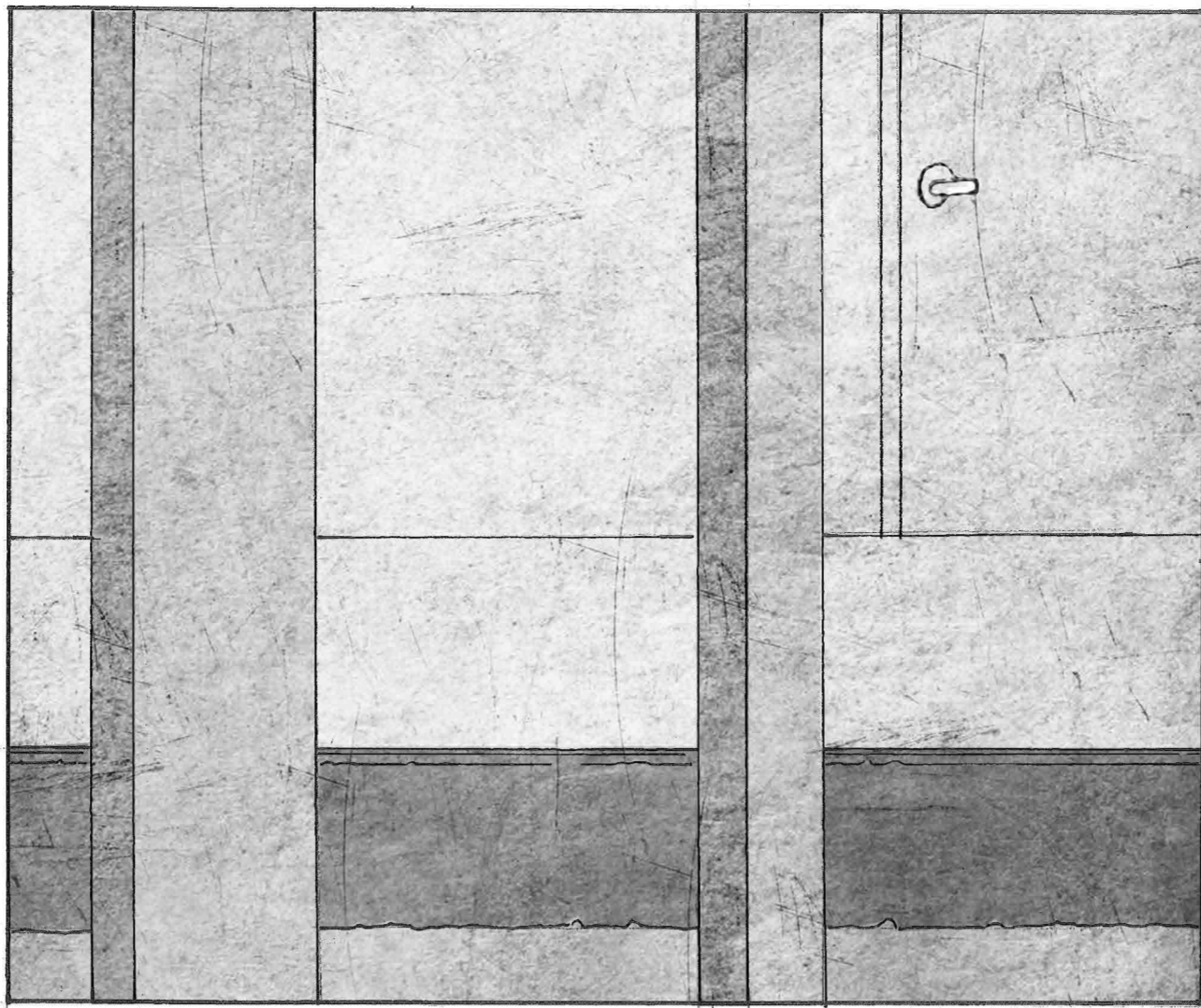
isometric view 1:200



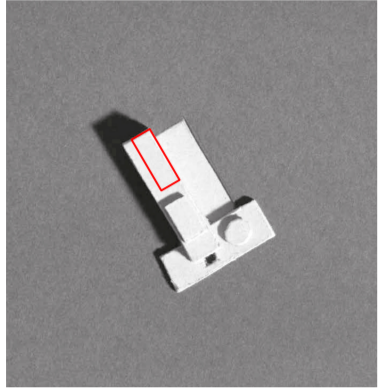
fragment Potsdam  
exhibition space on two upper levels  
ground floor not enclosed  
and part of public courtyard



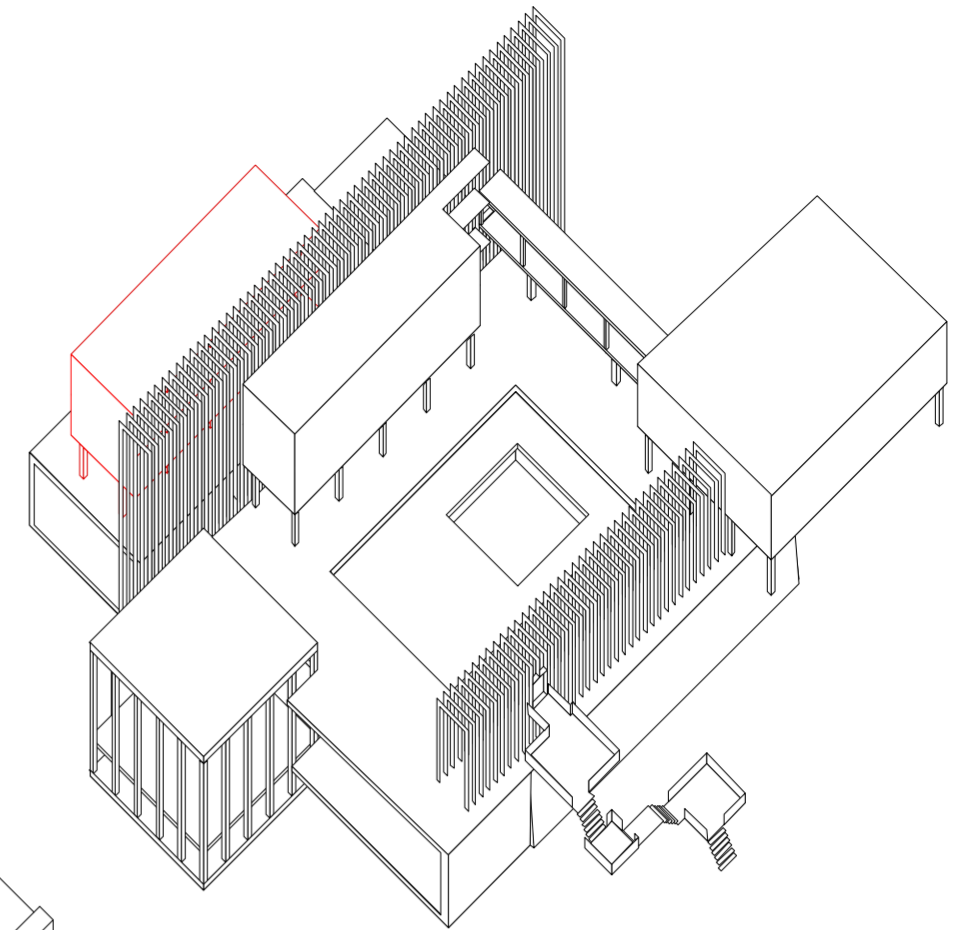
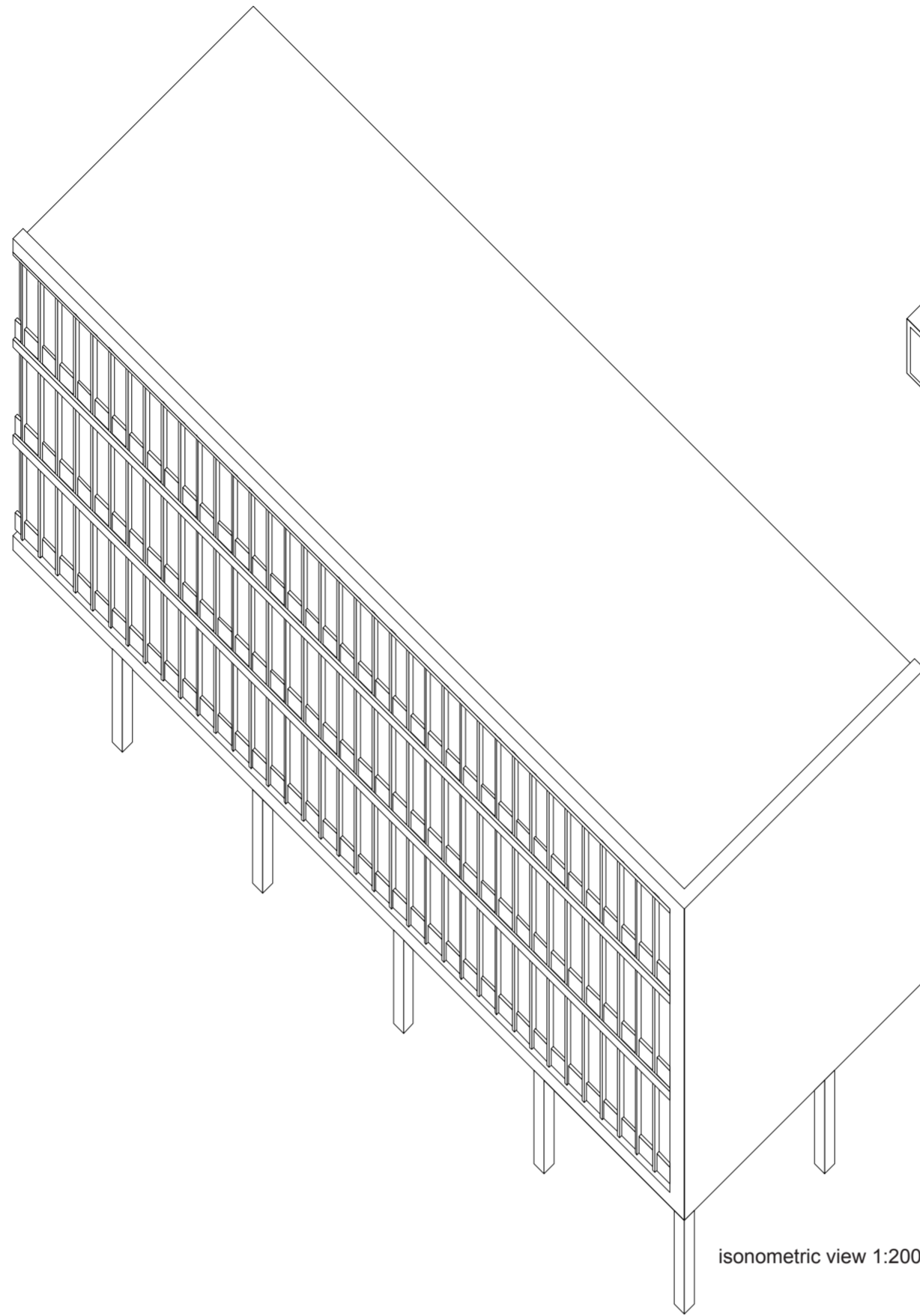
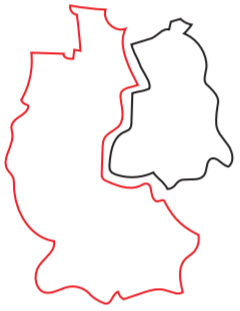
**Fragment FH Potsdam**  
perspective view



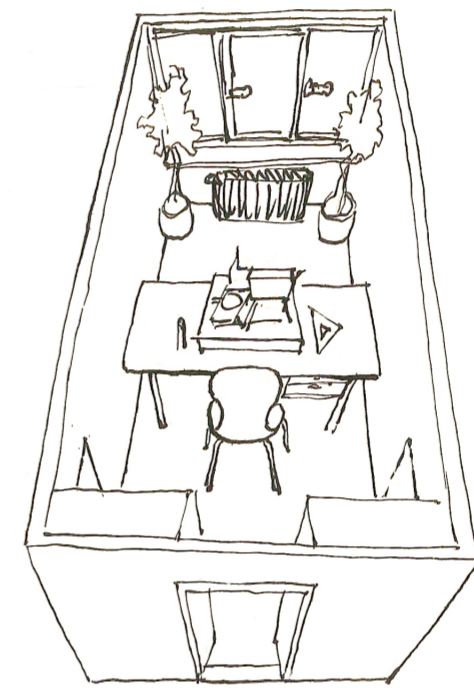
Transition II



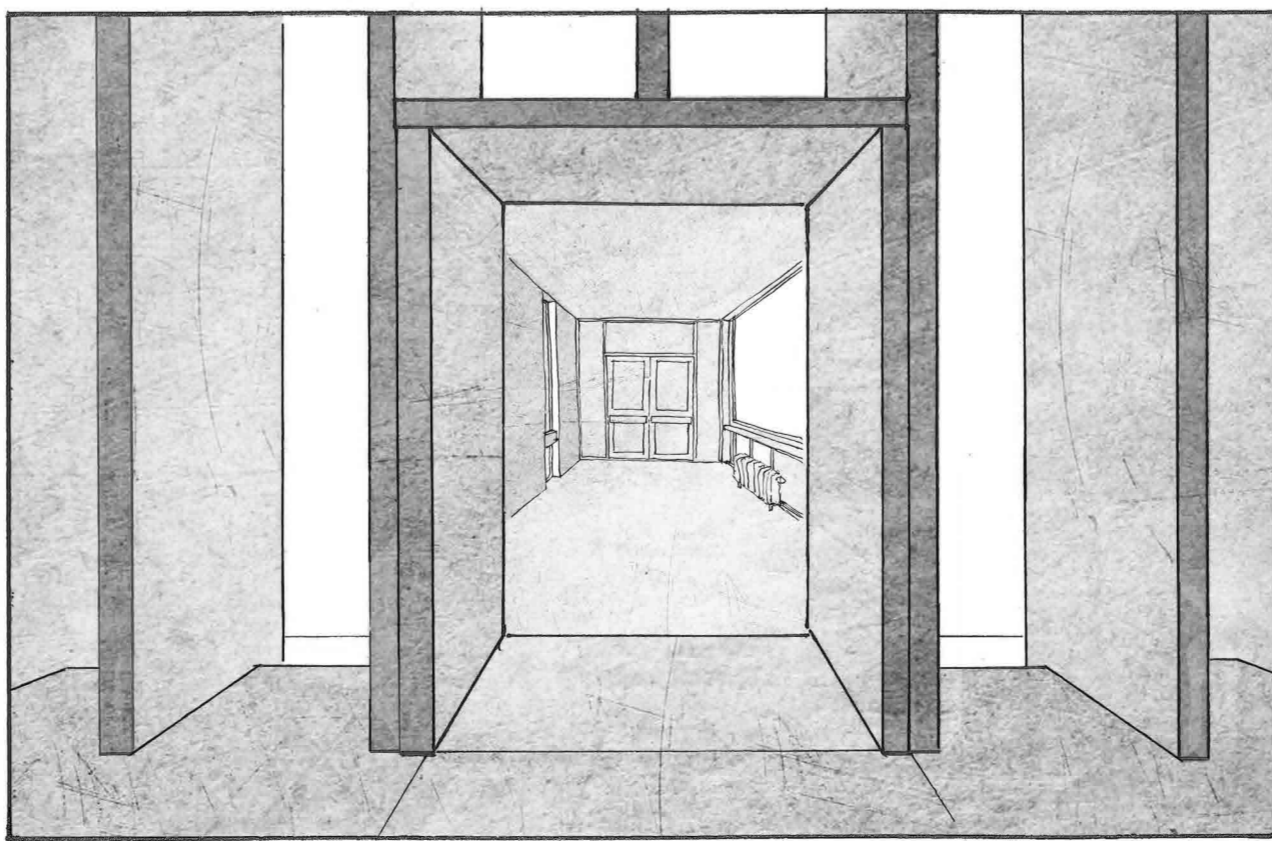
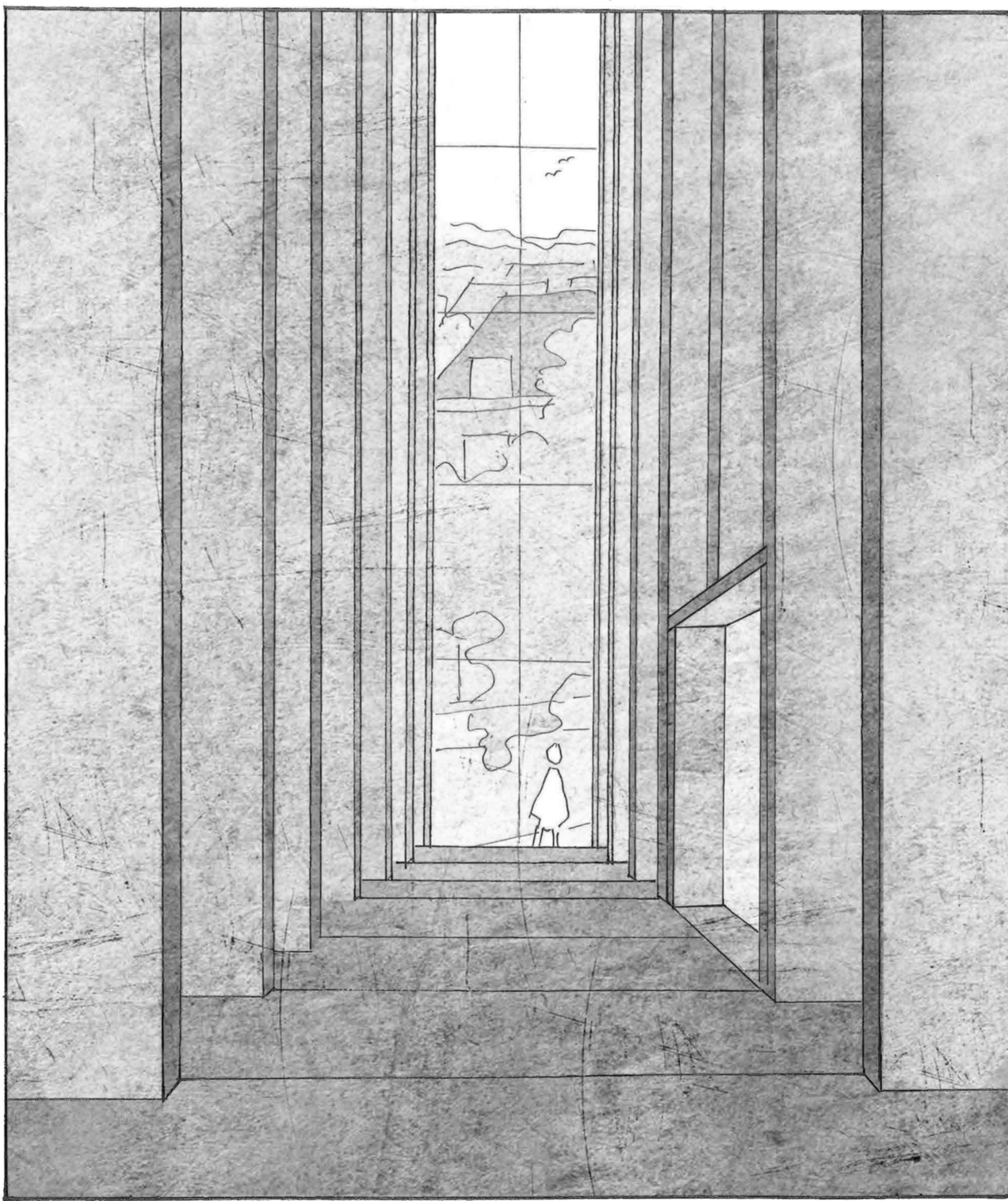
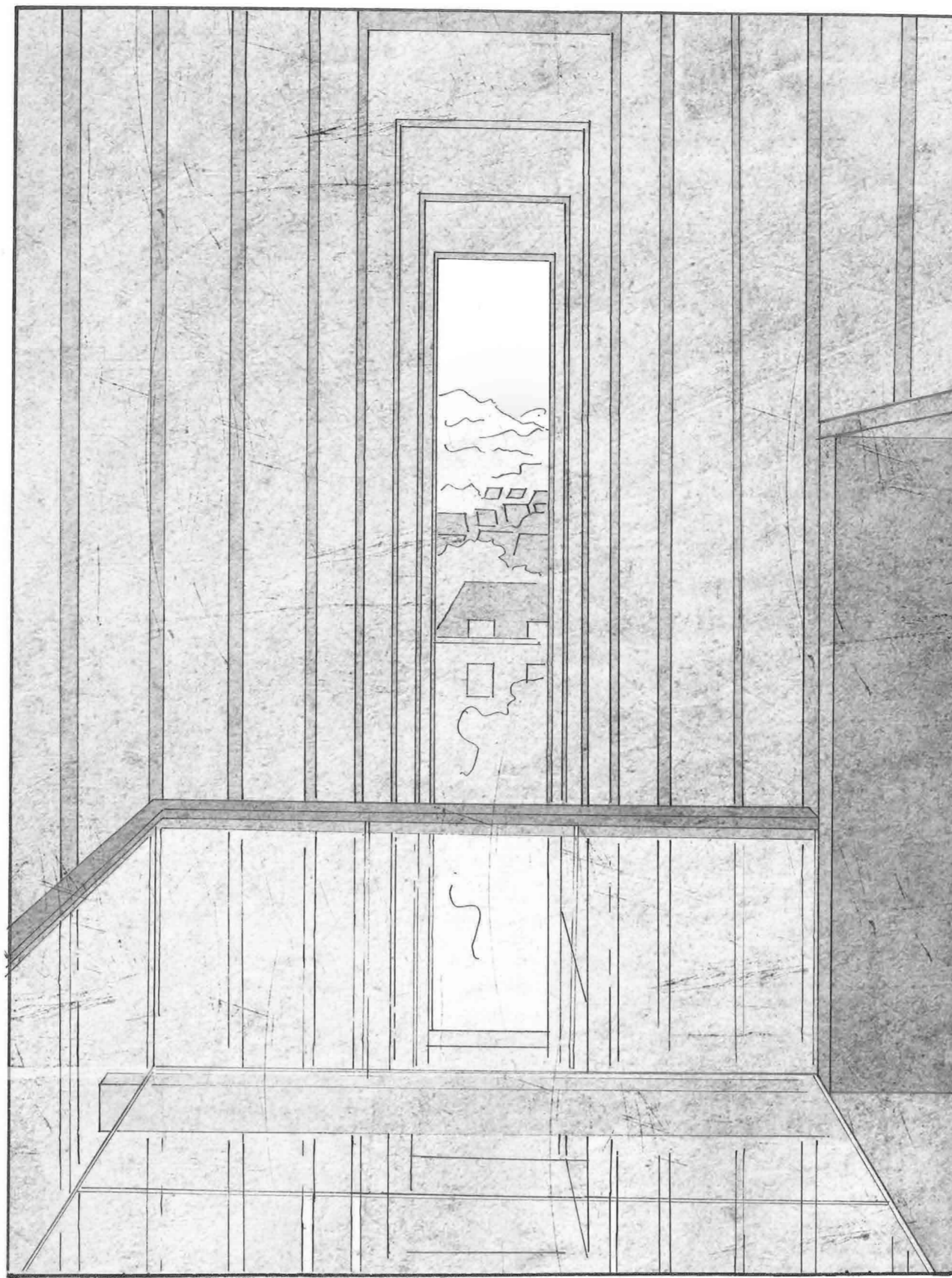
Rathaus Elmshorn  
built 1964-67  
architects Hans Mensinga und Dieter Rogalla  
still used as town hall  
going to be sold - future uncertain  
monument



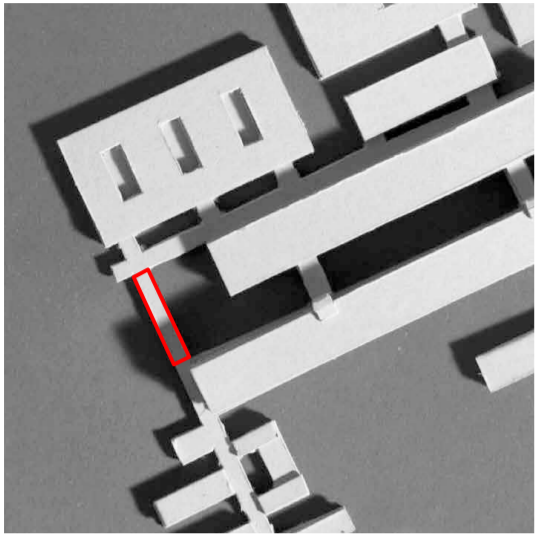
fragment Elmshorn  
exhibition space on first and second level  
educational space in ground floor  
offices on topfloor



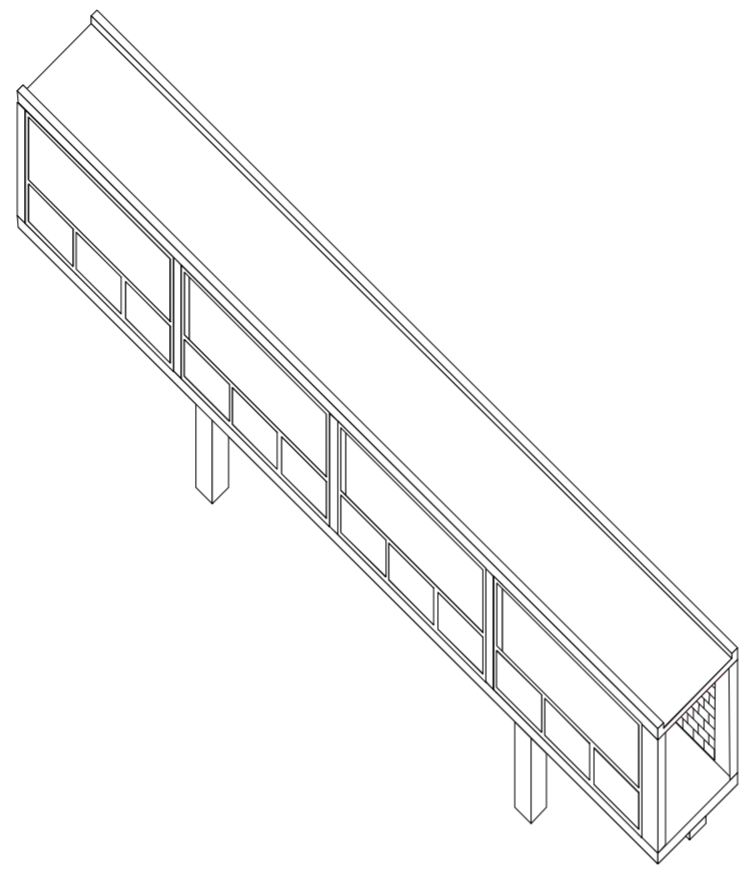
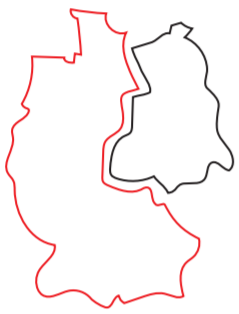
**Fragment Rathaus Elmshorn**  
perspective view



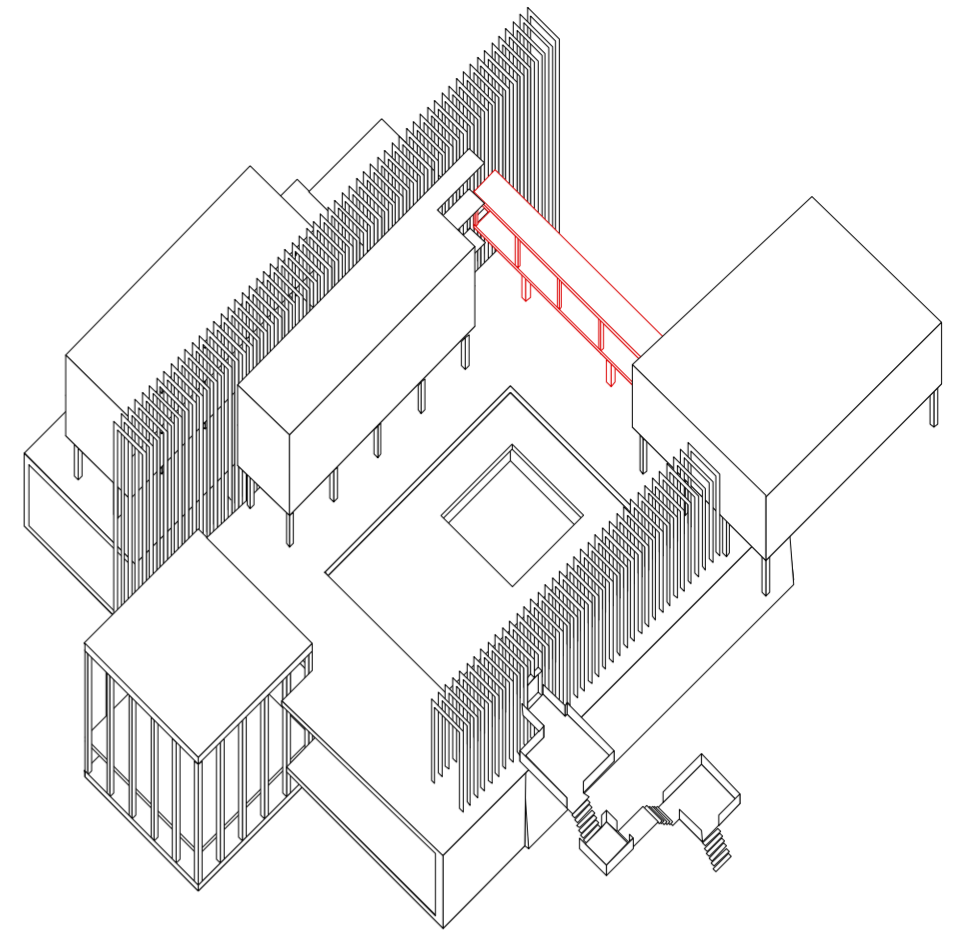
Transition III



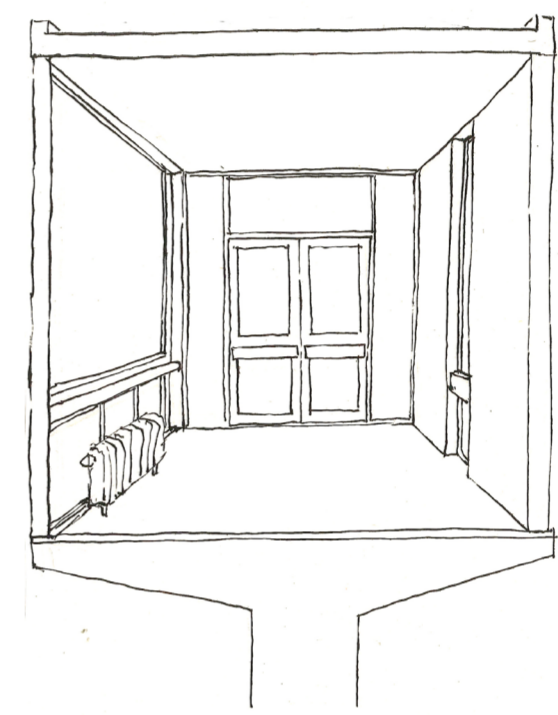
Medizinische Hochschule Hannover  
built 1962-1975  
architects Konstanty Gutschow and Godber Nissen  
hospital, university and laboratory  
constantly adapted to new requirements  
no monument



isonometric view 1:200

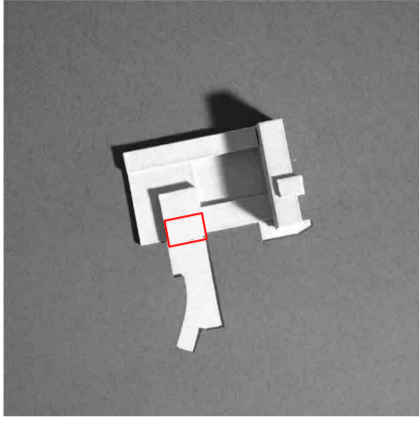


fragment I Hannover  
part of exhibition circuit

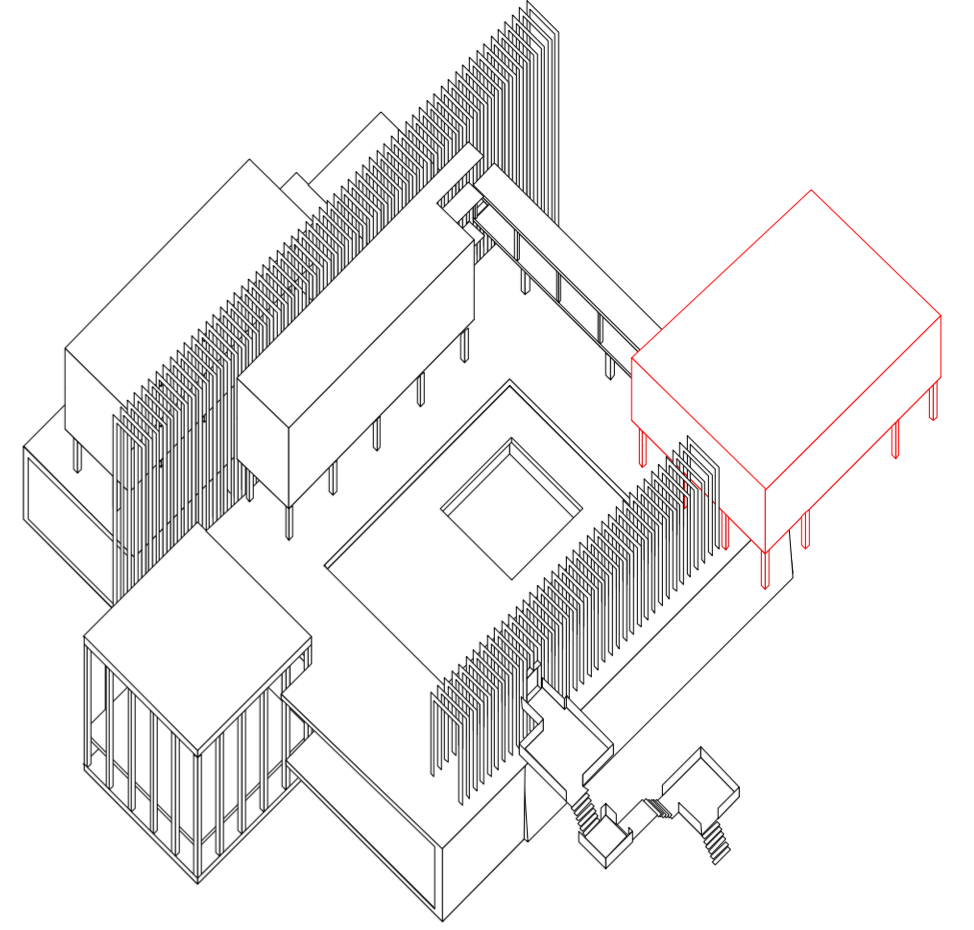
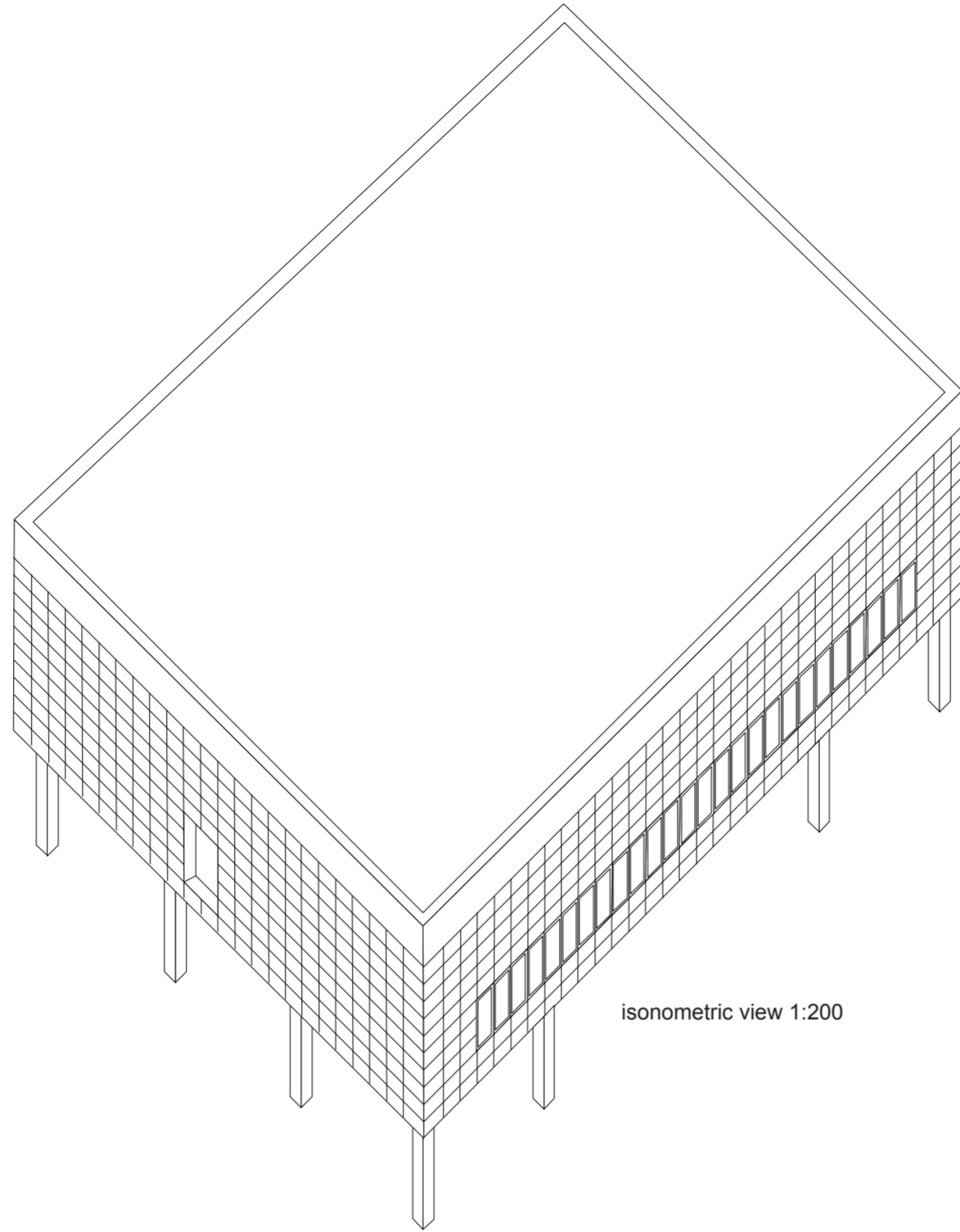
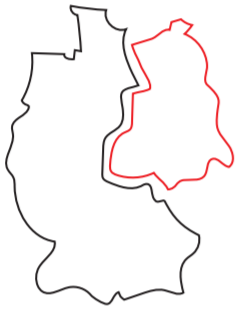


**Fragment MHH I**  
perspective view

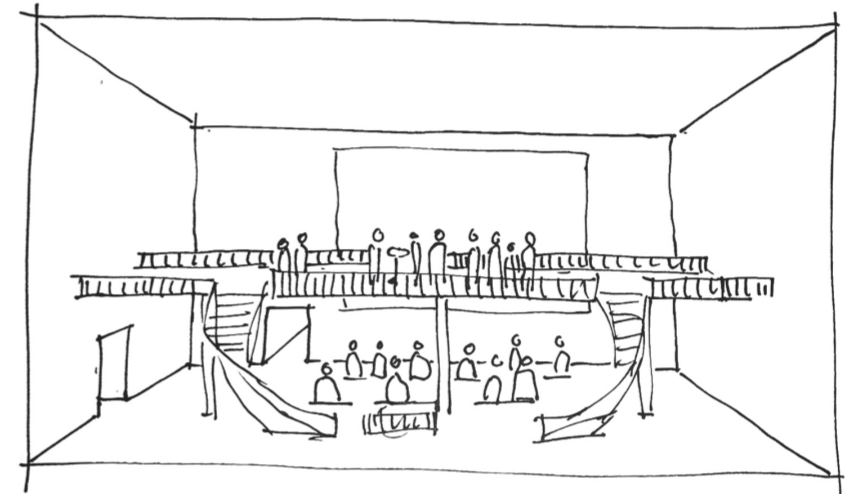




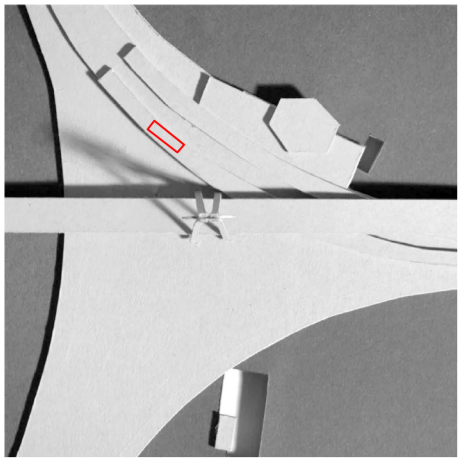
Alte Parteischule Erfurt  
built 1972  
architects collective  
now used as multipurpose venue  
being restored  
monument



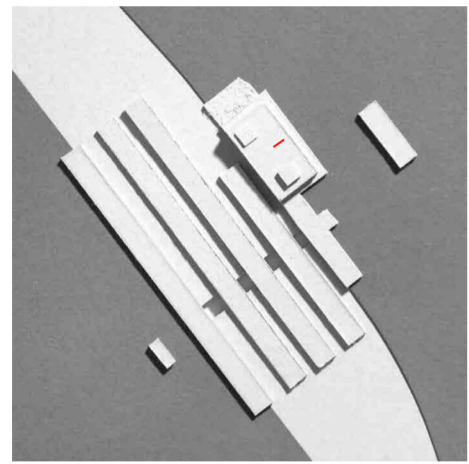
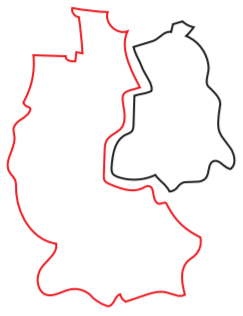
fragment Erfurt  
space for cultural events  
independent entrance via groundfloor



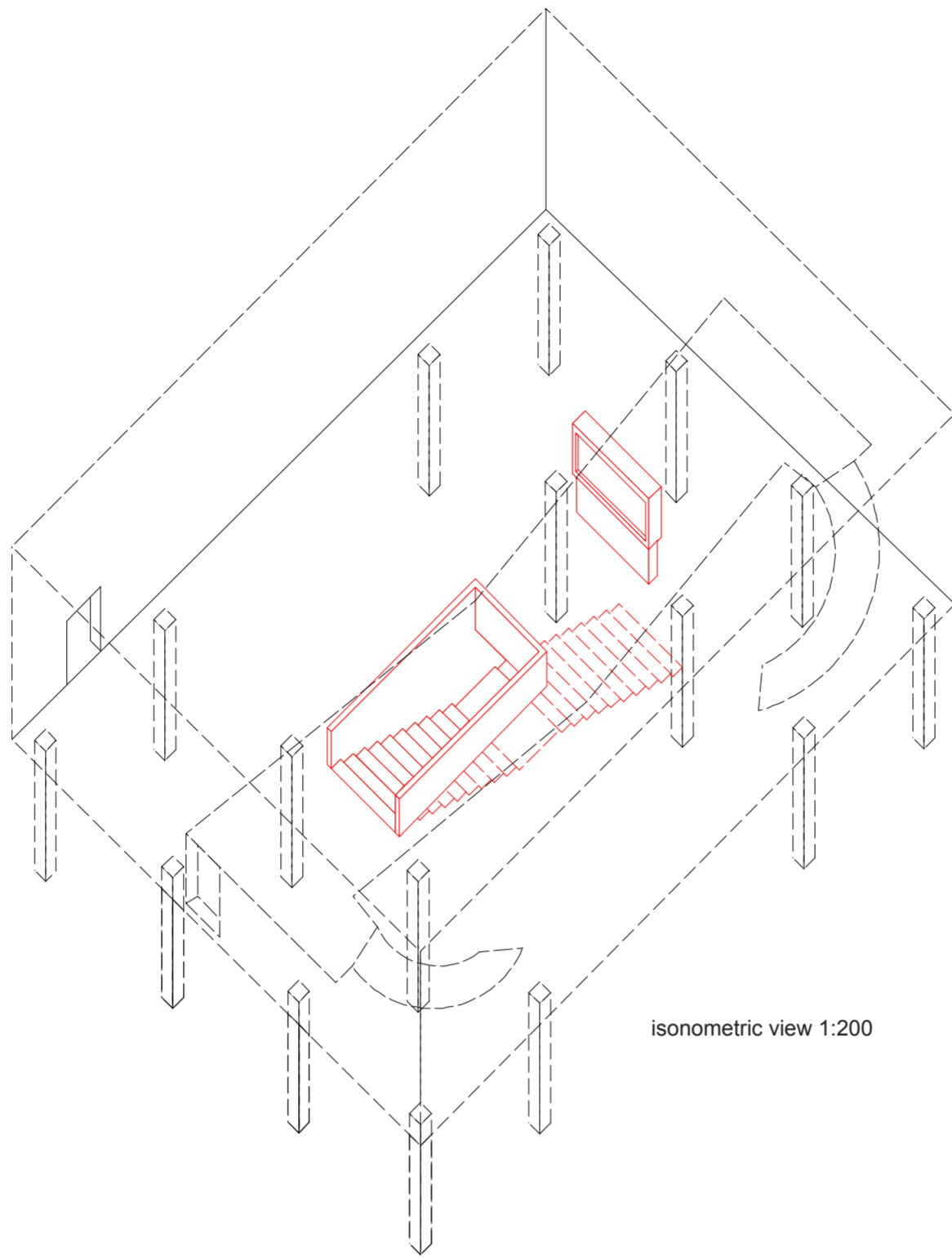
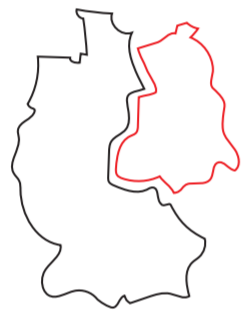
**Fragment Parteischule Erfurt**  
perspective view



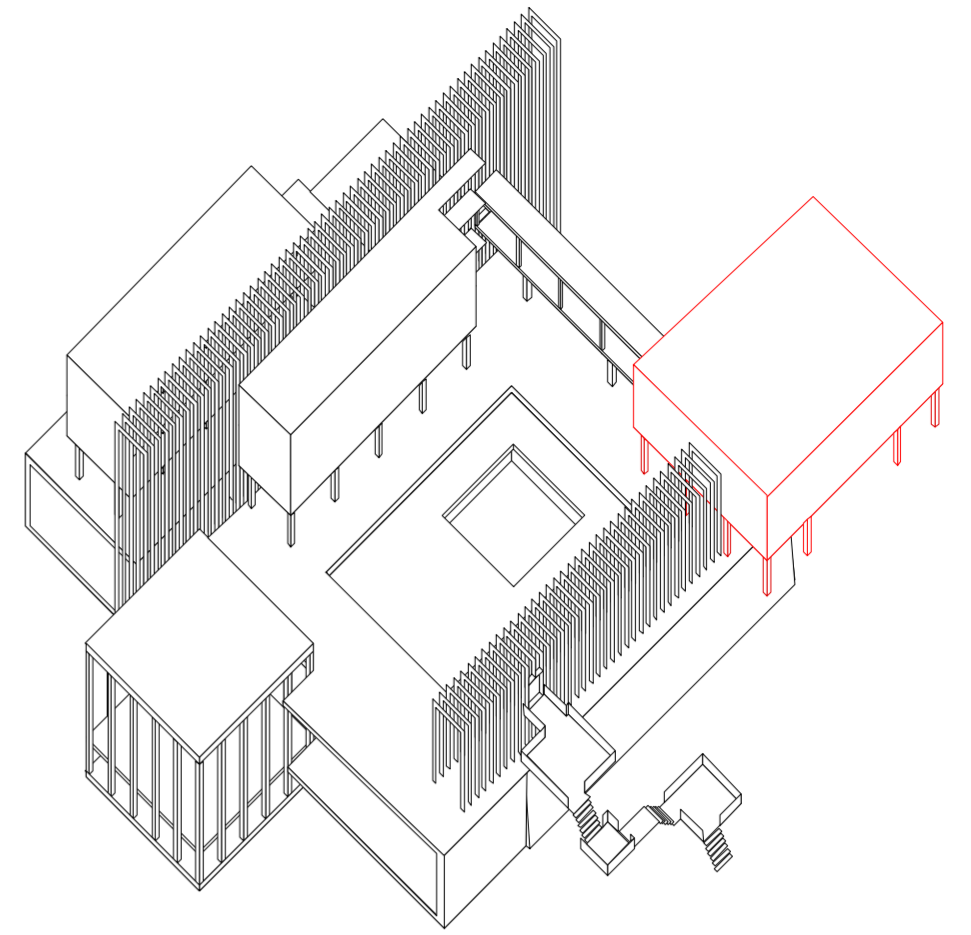
Hauptbahnhof Ludwigshafen  
 built 1962-71 opened 1969  
 architects of state administration for railways  
 trainstation little used, future uncertain  
 no monument



Bahnhof Schönefeld Flughafen  
 planned and built 1969-1976  
 architects unknown  
 originally designed for state receptions  
 demolition planned  
 no monument

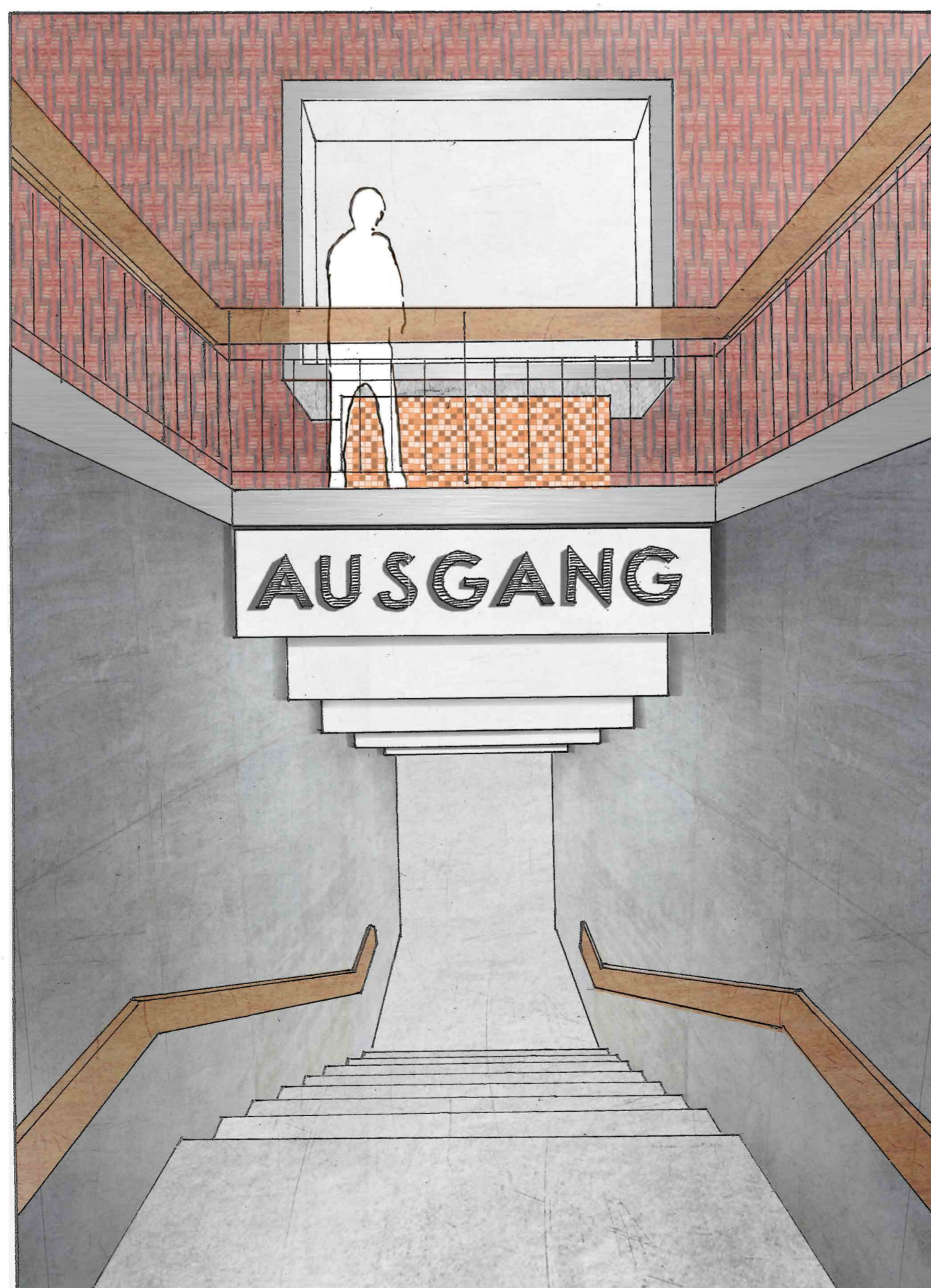
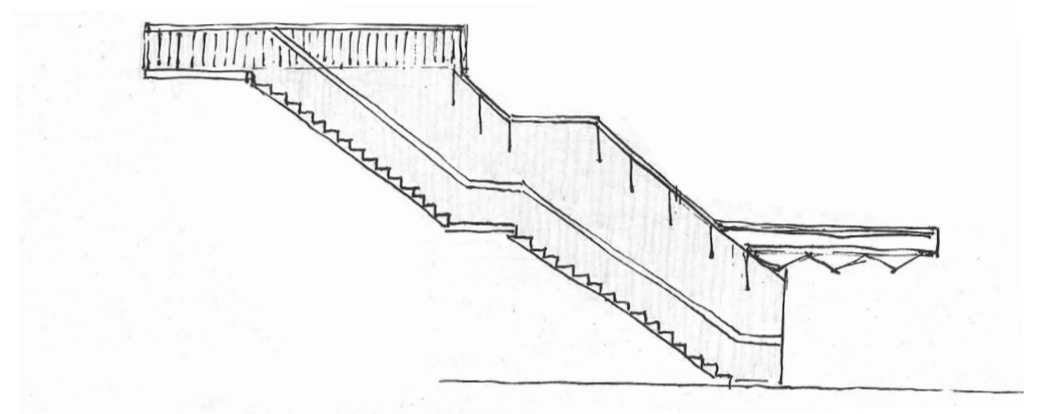


isonometric view 1:200

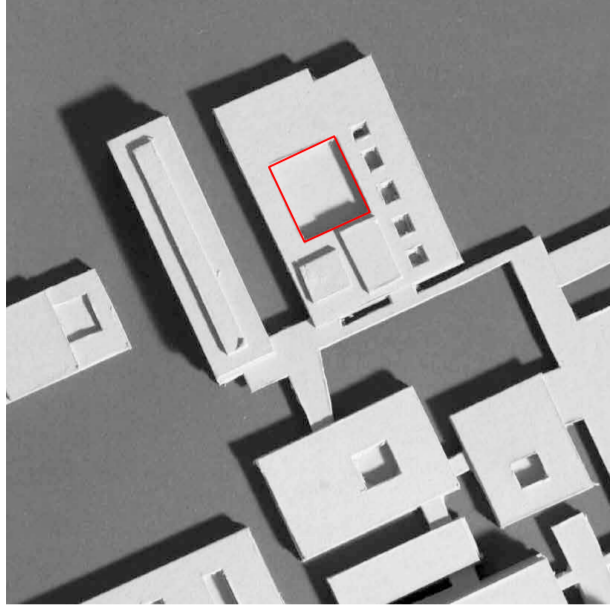


fragment Ludwigshafen  
 staircase as independant entrance to space for cultural events

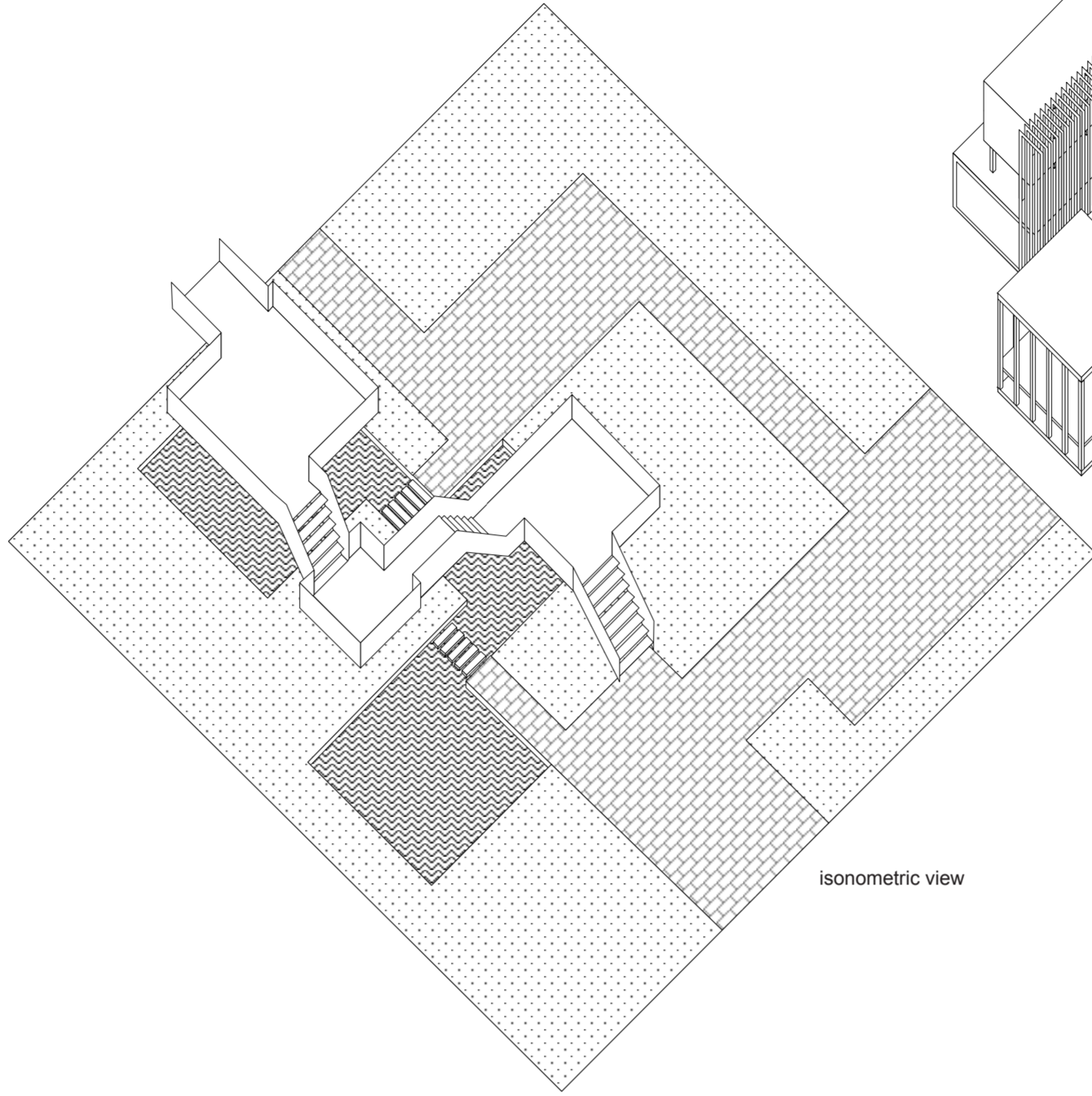
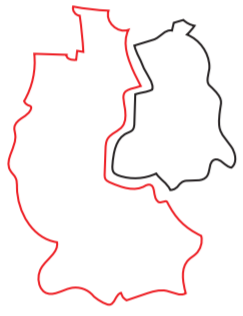
fragment Schönefeld  
 interior showcase



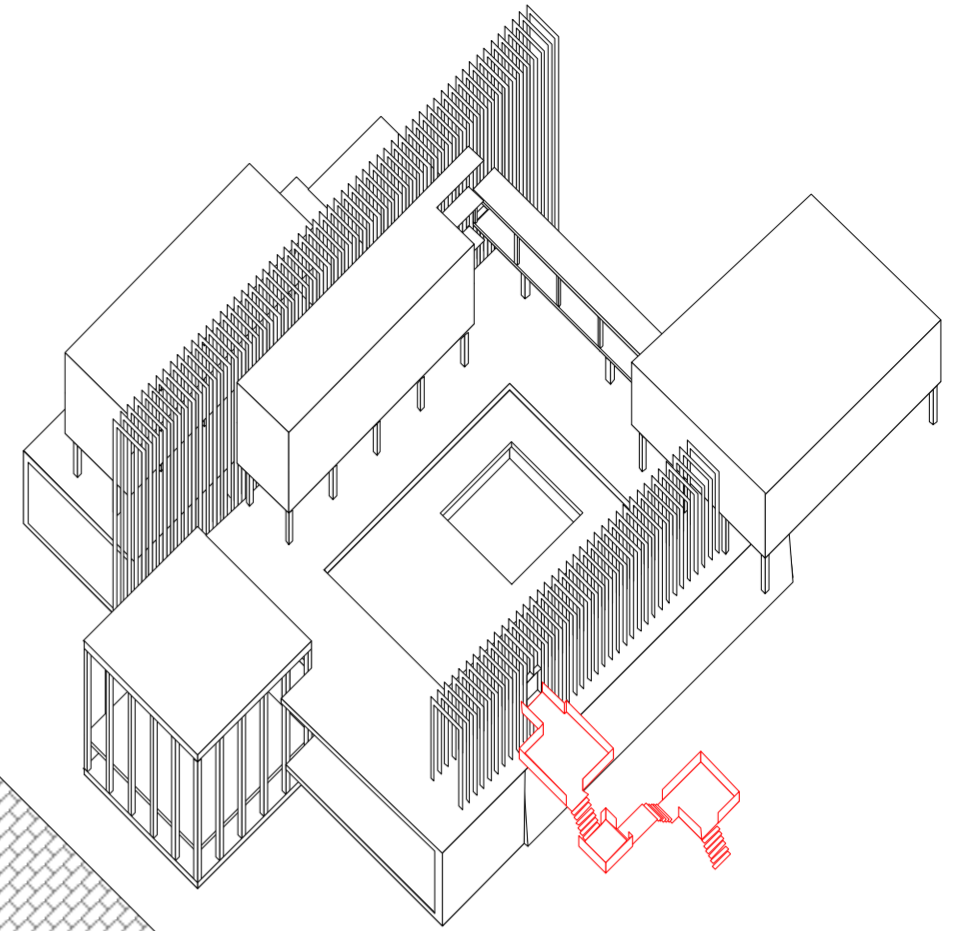
Fragments Bahnhof Ludwigshafen/Bahnhof Schönefeld  
 perspective view



Medizinische Hochschule Hannover  
built 1962-1975  
architects Konstanty Gutschow and Godber Nissen  
hospital, university and laboratory  
constantly adapted to new requirements  
no monument



isonometric view



fragment II Hannover  
garden element  
publicly accessible



Fragment MHH II  
perspective view