

The background image is a wide, horizontal landscape. The foreground is a vast, flat, sandy or silty area, possibly a dried-up riverbed or a coastal plain. In the middle ground, there are patches of dry, yellowish-brown grass and some small, bare trees. In the distance, a line of trees with some autumn-colored foliage is visible against a pale, overcast sky. The overall mood is desolate and contemplative.

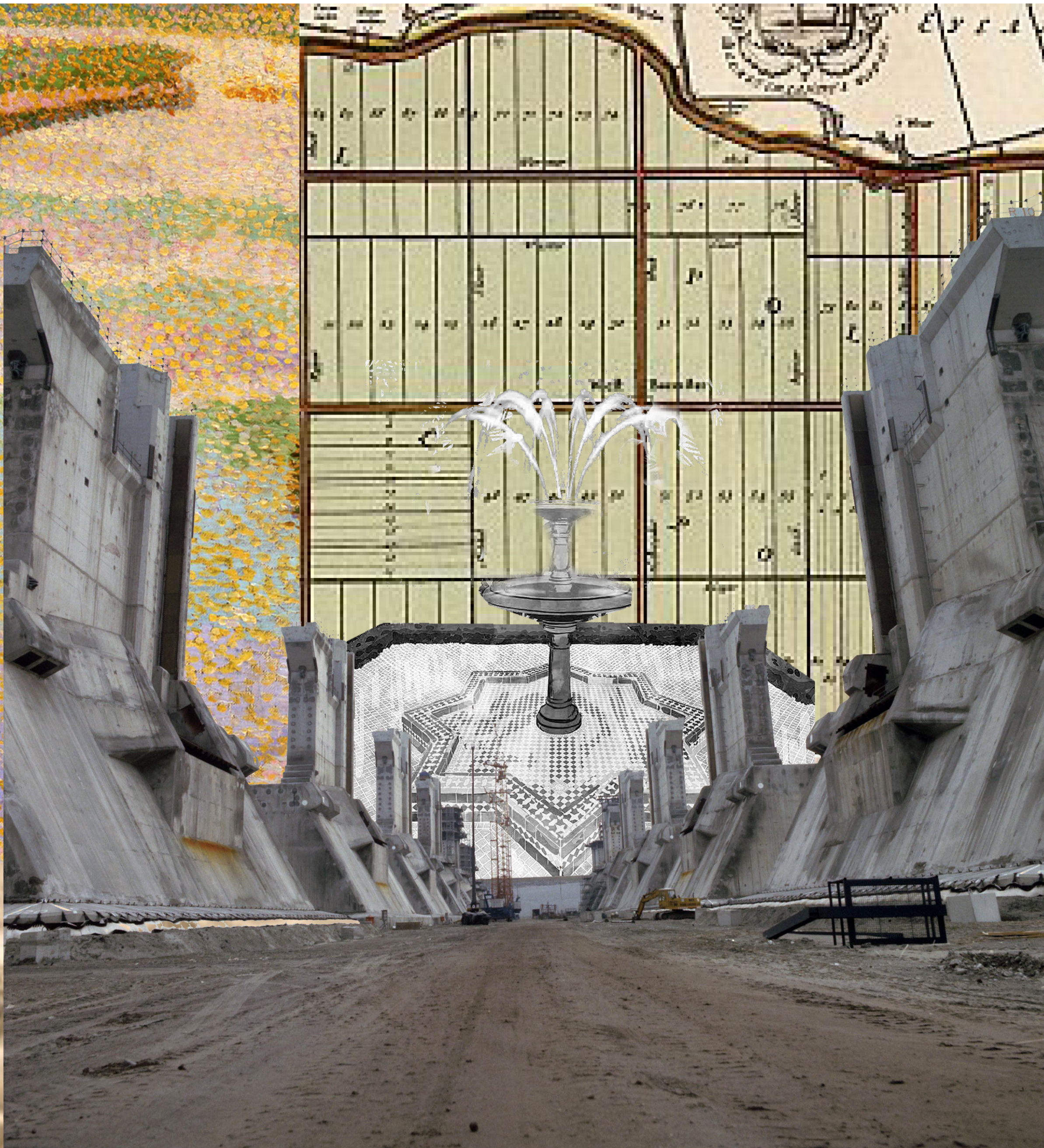
# THE VOICE OF THE WATER

in search for the sublime in the Biesbosch







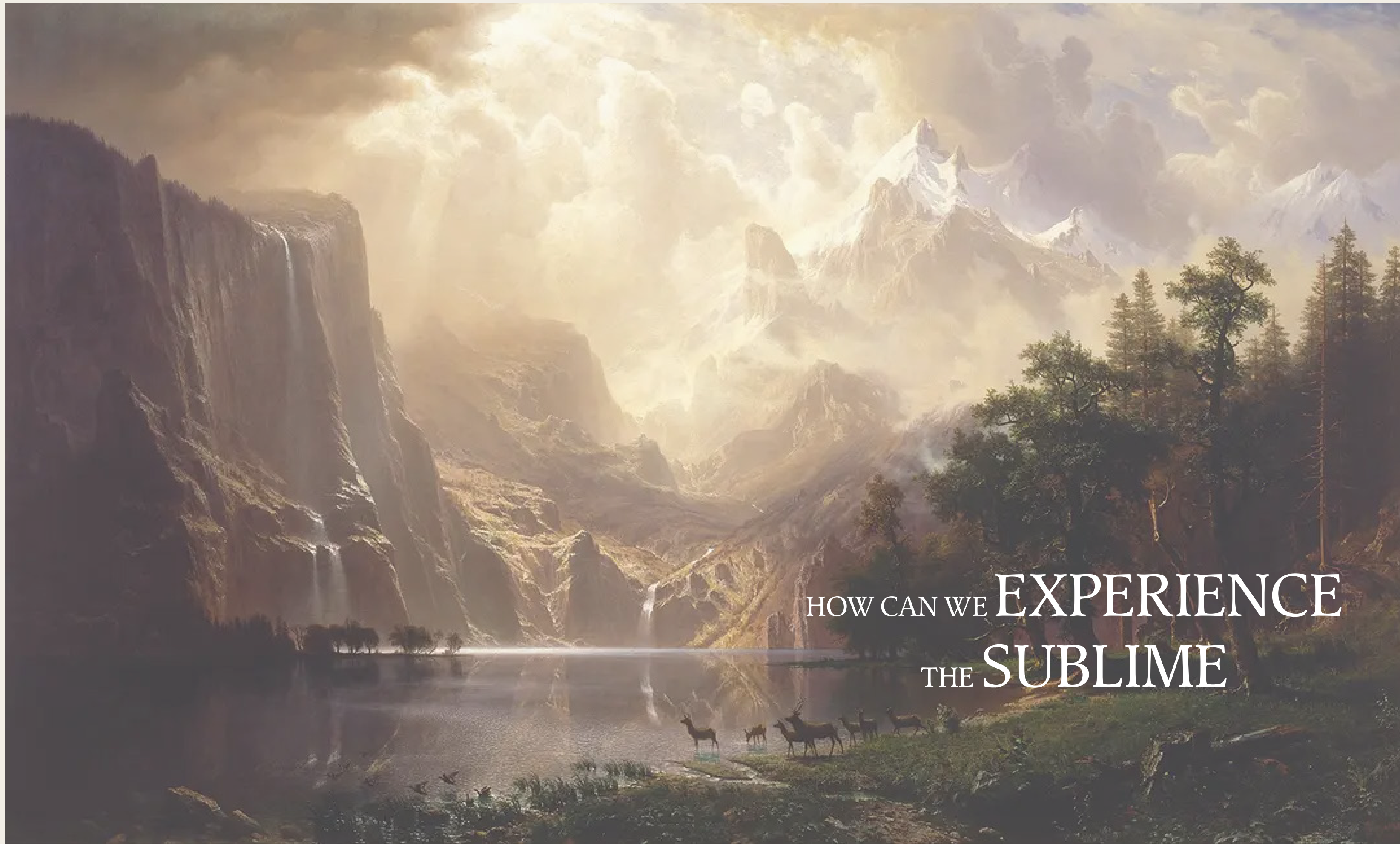




## THE SUBLIME

AN OVERWHELMING TENSION BETWEEN ADMIRATION AND INTIMIDATION OF AN ENVIRONMENT, INVITING US TO REFLECT UPON OUR PLACE IN THE LARGER WHOLE.





HOW CAN WE EXPERIENCE  
THE SUBLIME

Among the Sierra Nevada, Albert Bierstadt, 1868



IN THE POLDER?



*Polder Landscape, Jan van Goyen, 1644*





*De Sint-Elisabethsvloed, Meester van de Heilige Elisabeth-panels, ca.1490-1495*



*reader's*

*poet's*

*distinguished*

*legible landscapes*

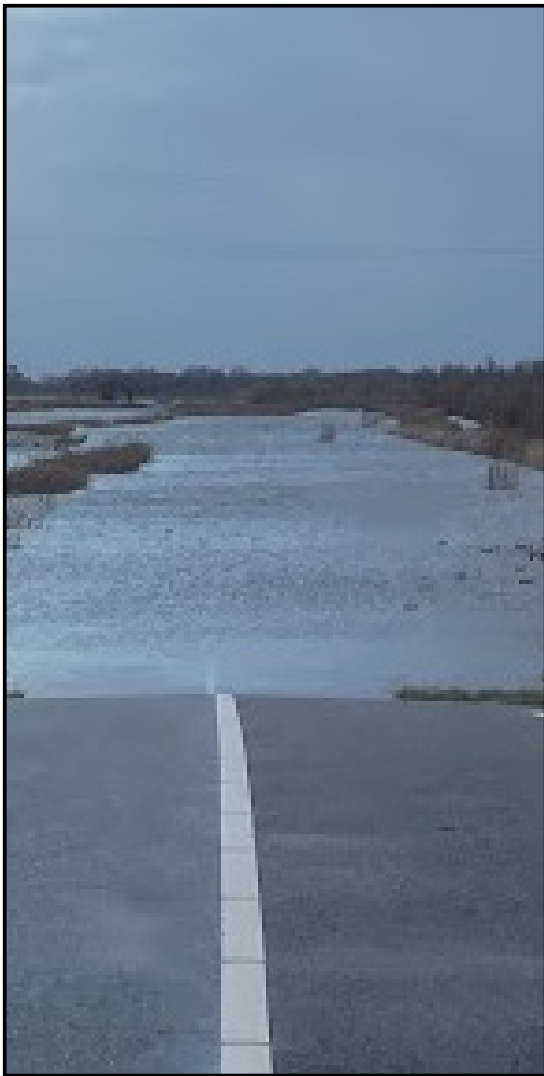
*neglected landscapes*

*portal landscapes*

*horrific landscape*

*liminal landscapes*

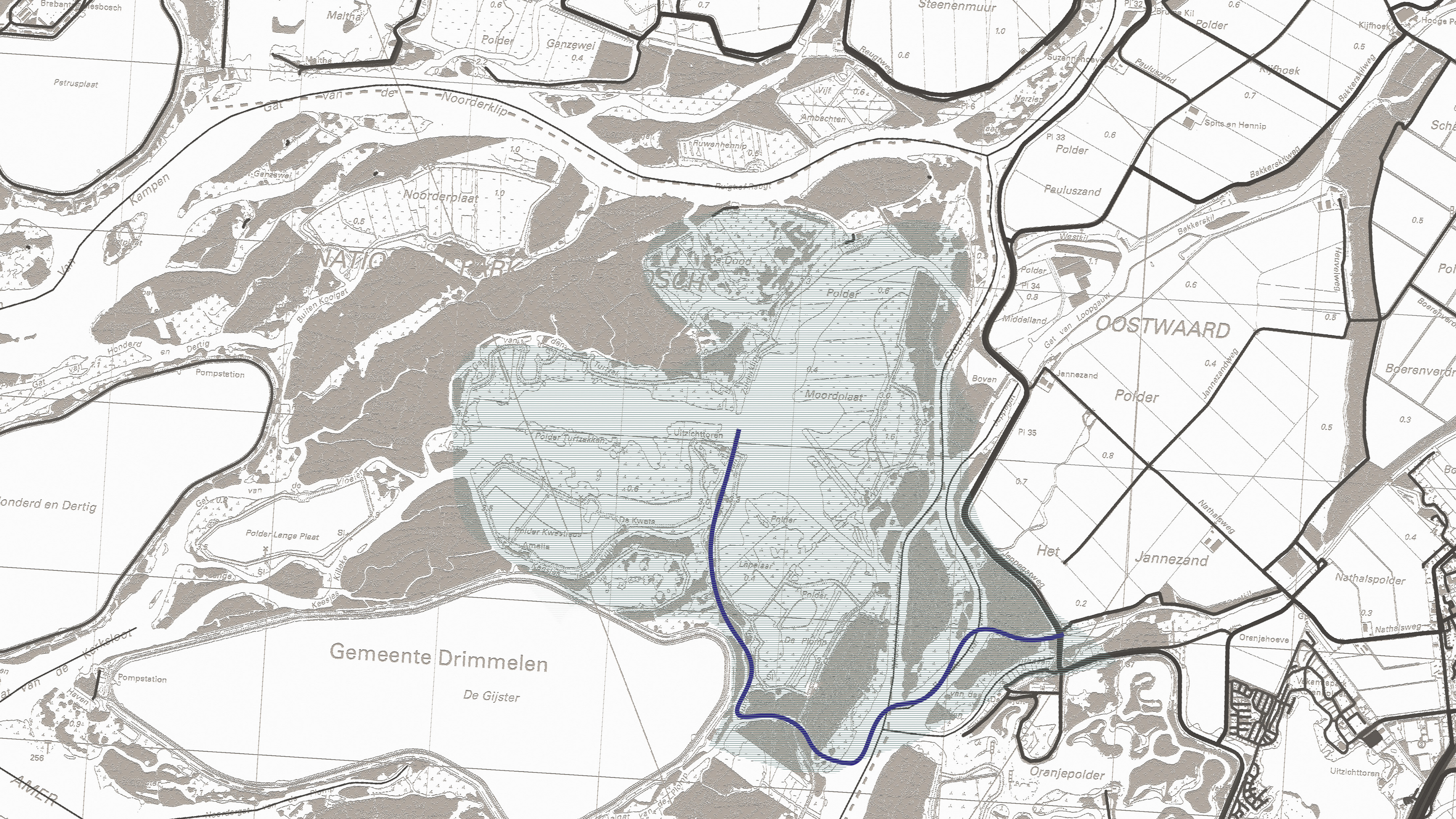
*unpresentable landscapes*





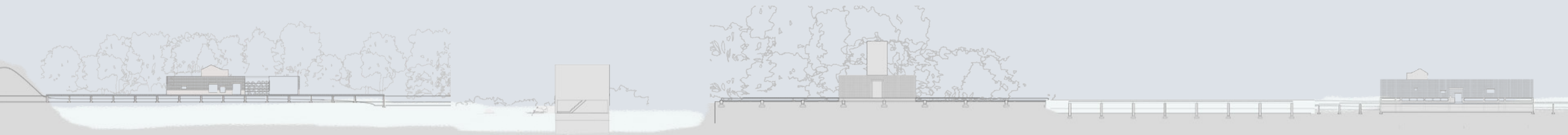




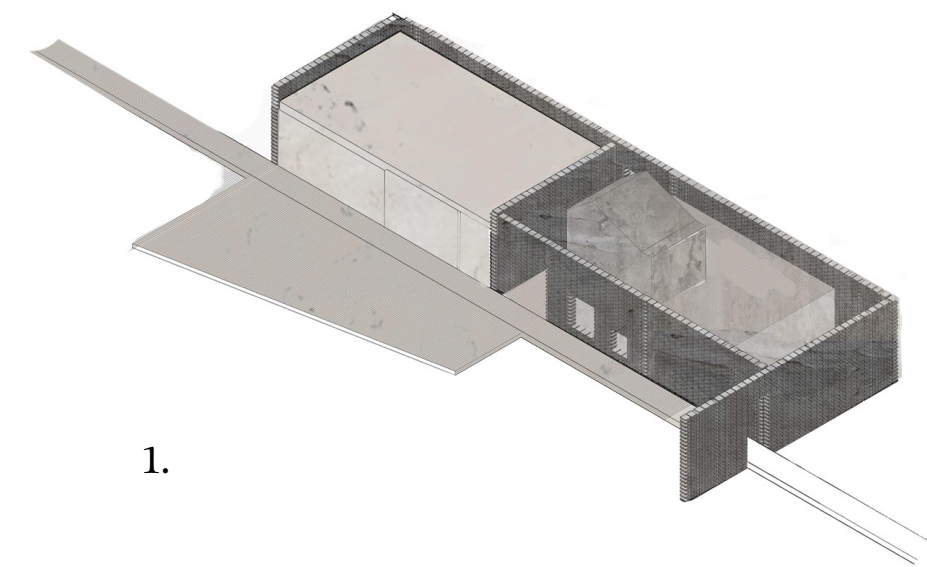
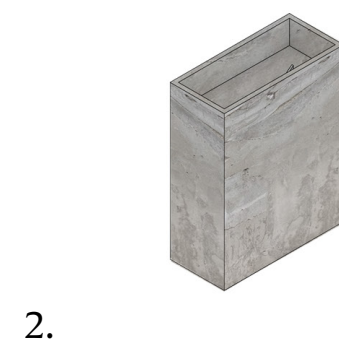
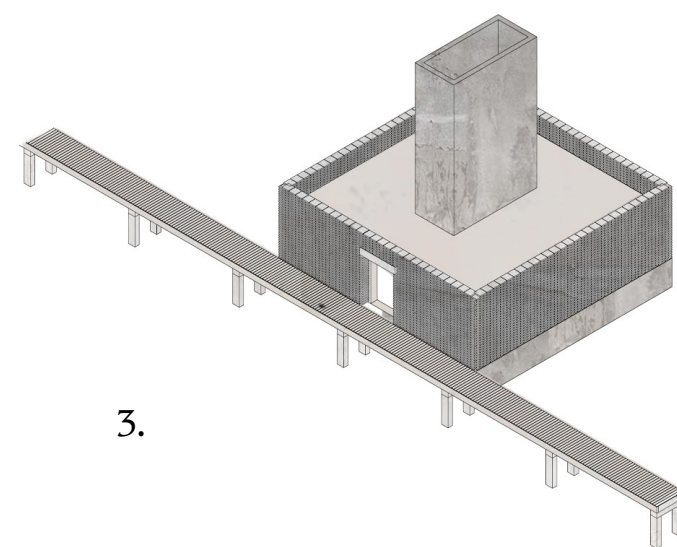
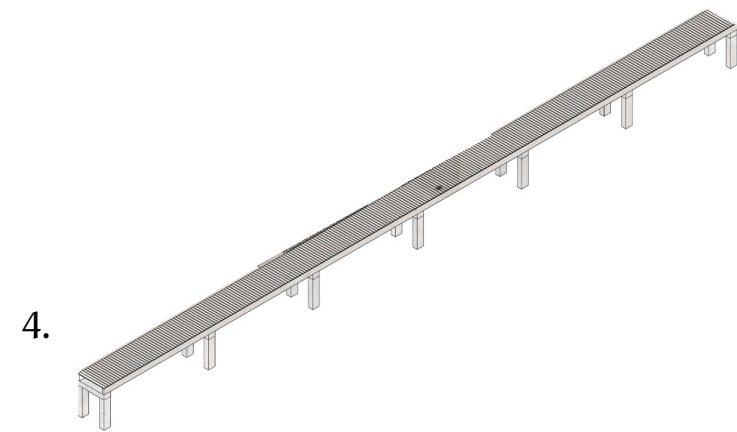
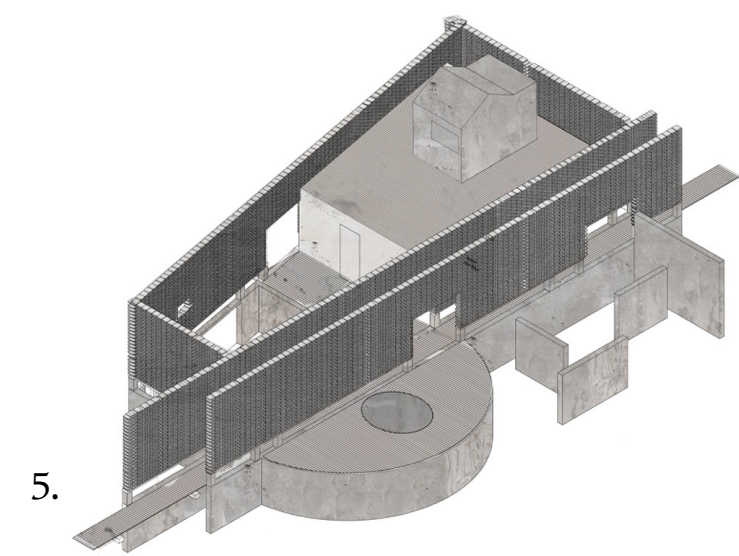




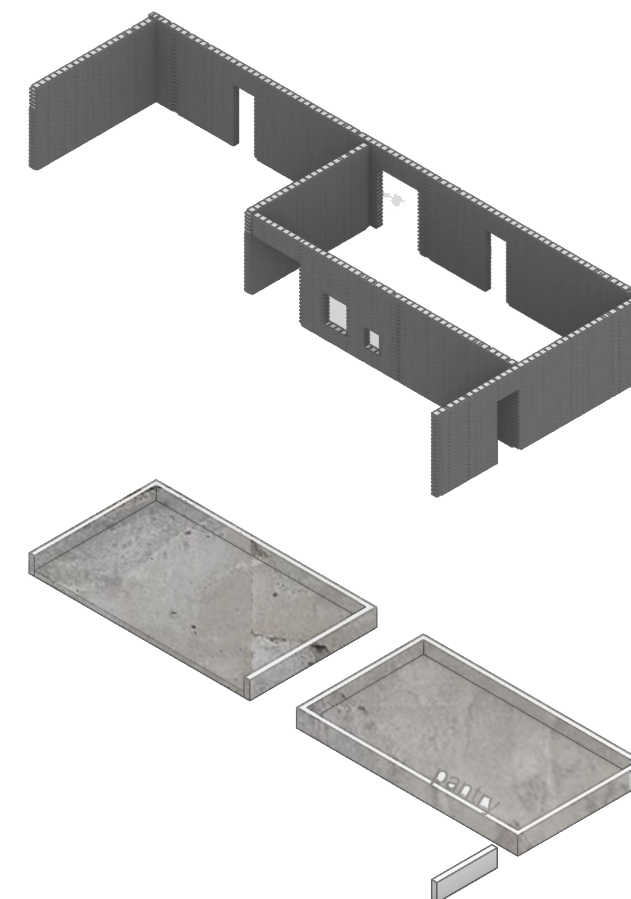
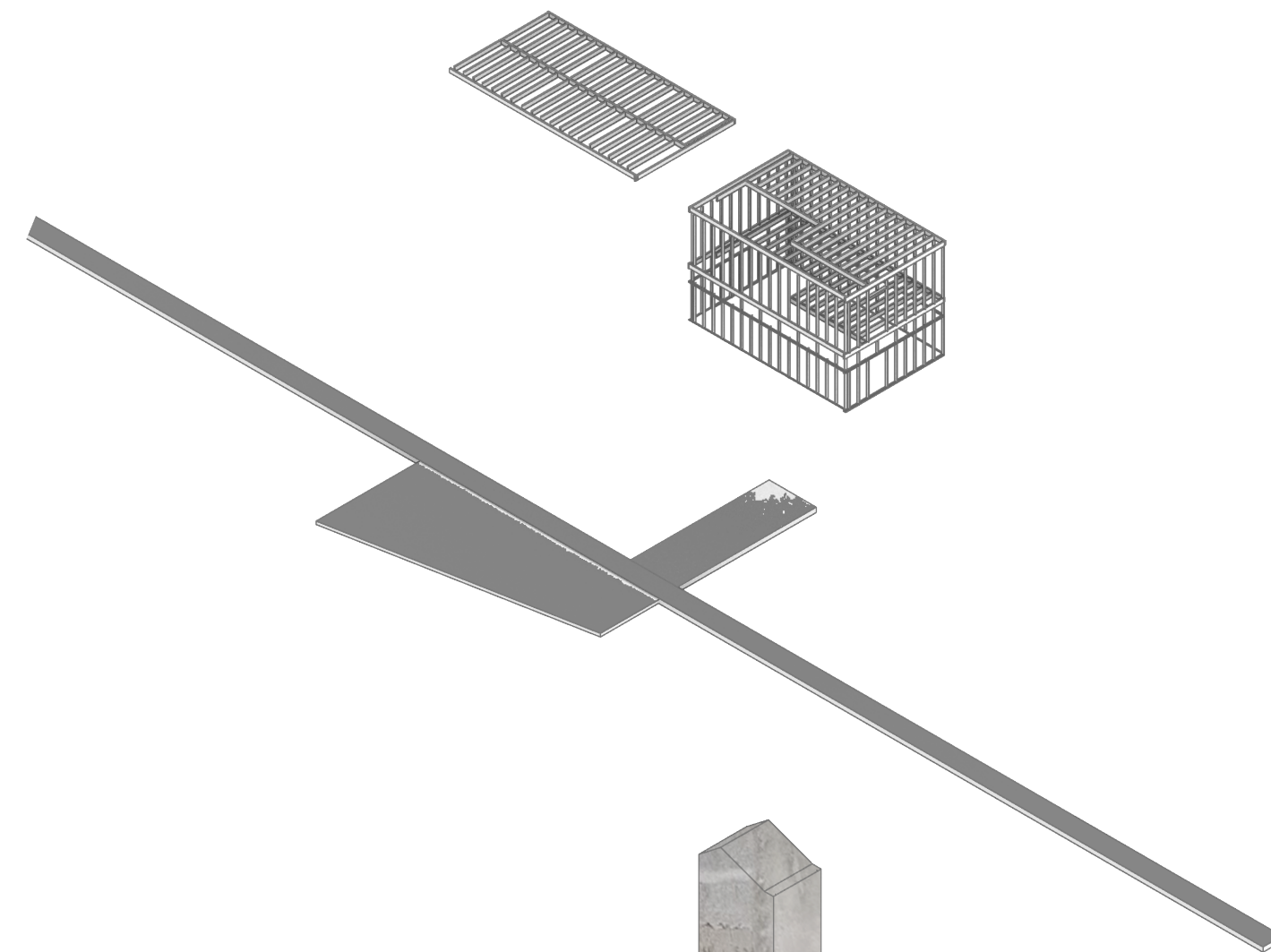
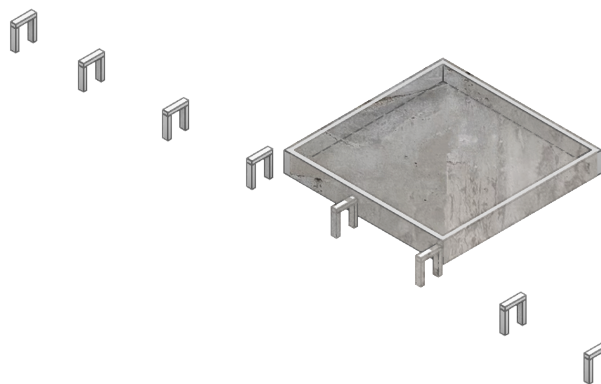
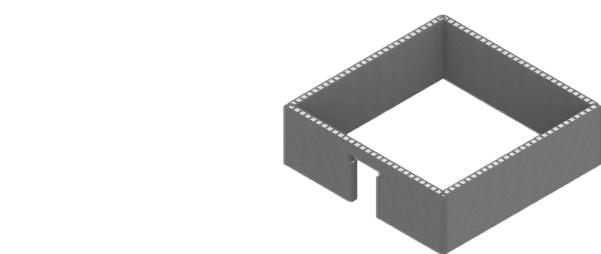
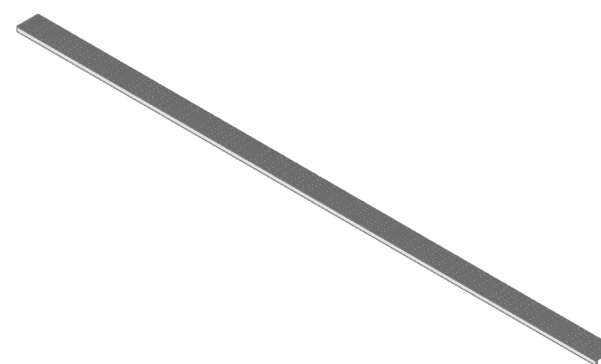
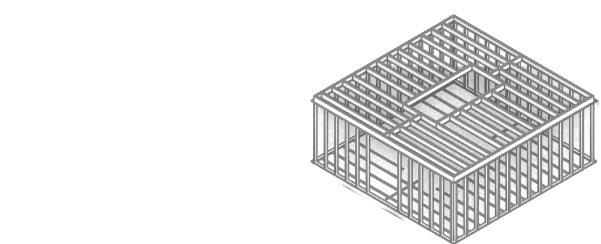
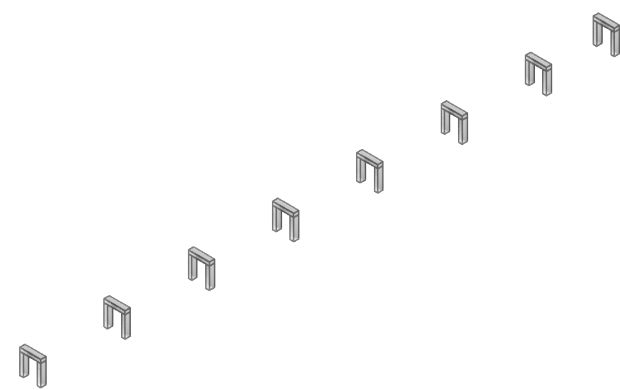
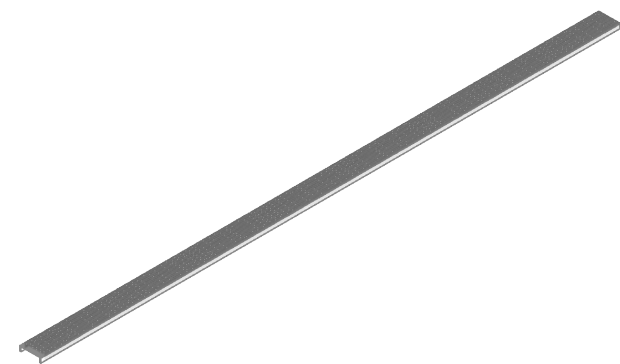
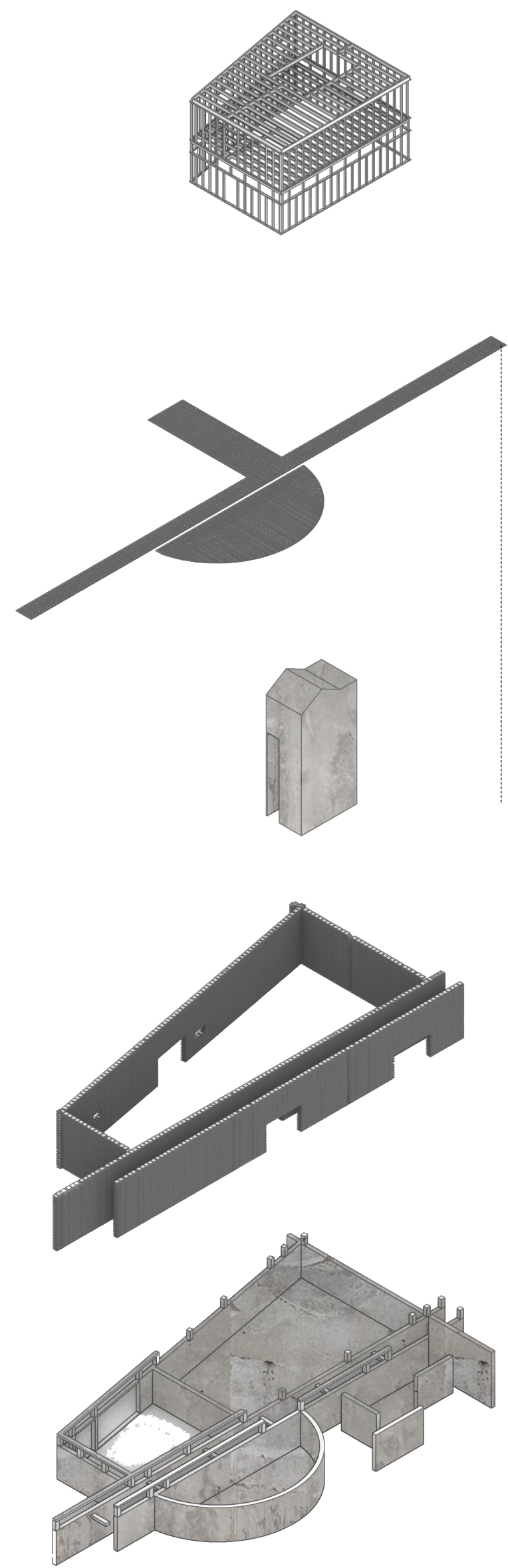
A HABIT BREAKING JOURNEY ALONG  
DIFFERENT TYPES OF THE SUBLIME,  
COMBINING HARMONY WITH DISRUPTION



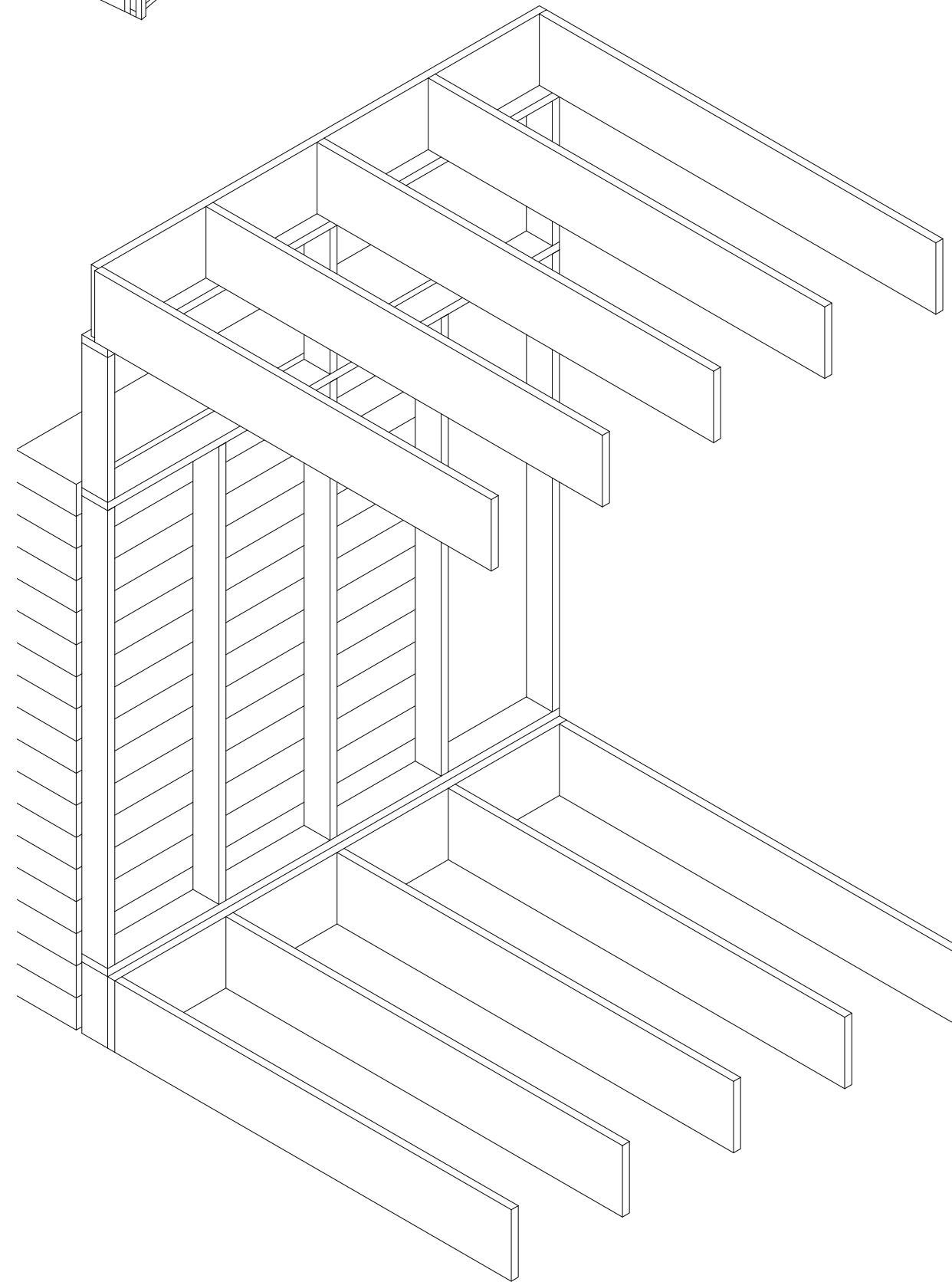
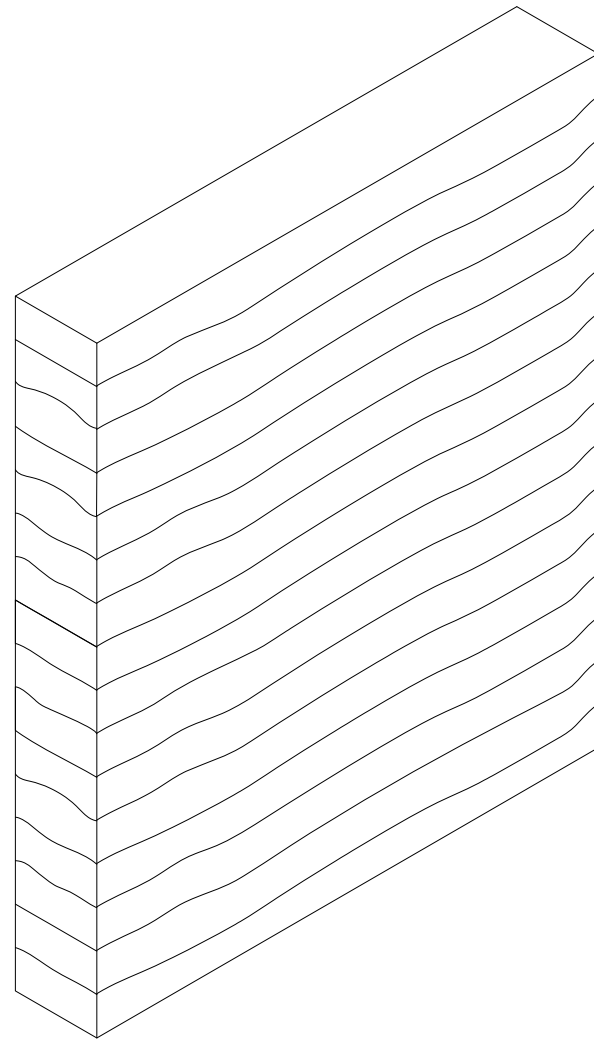
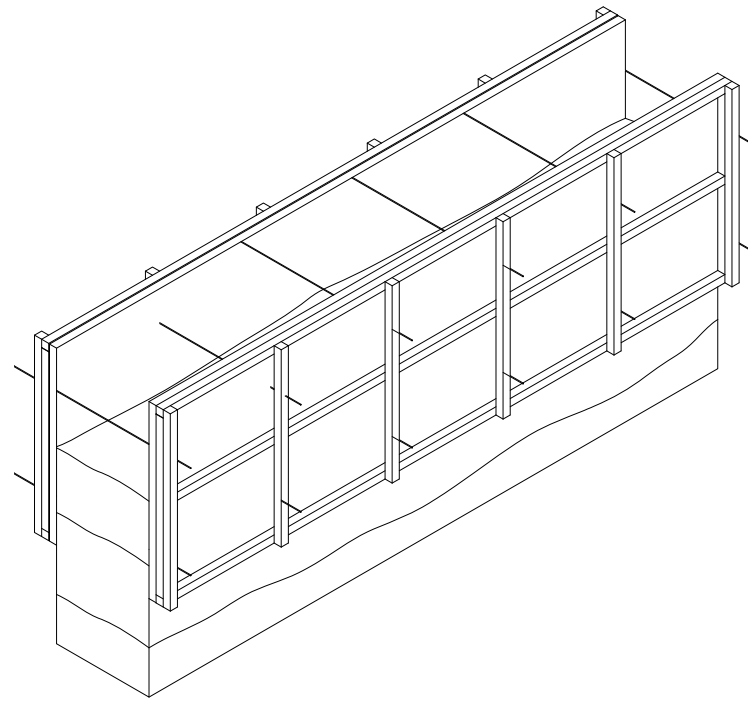
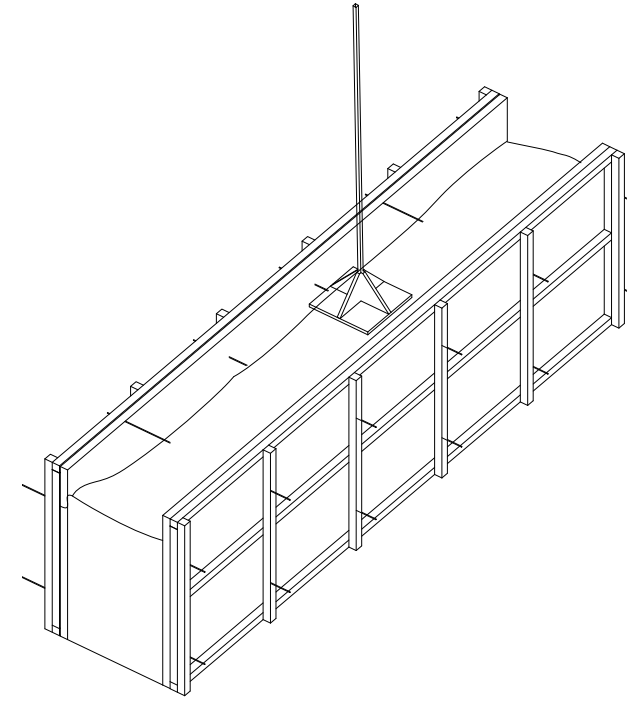
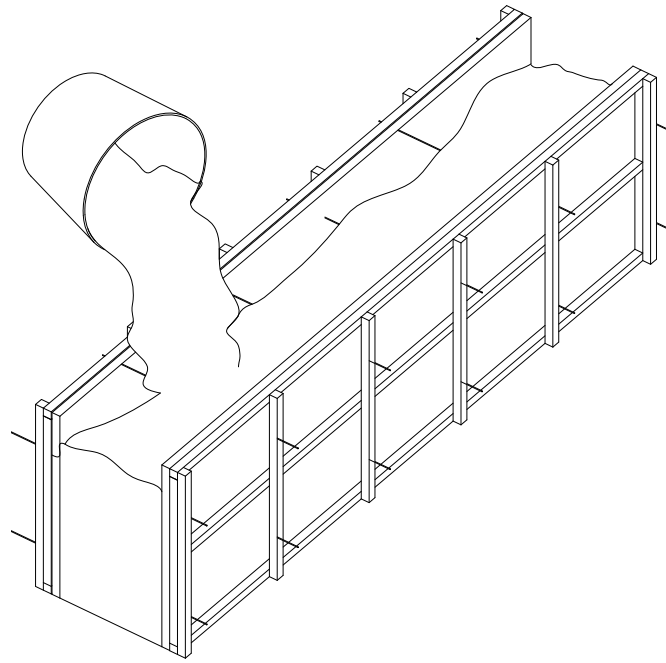




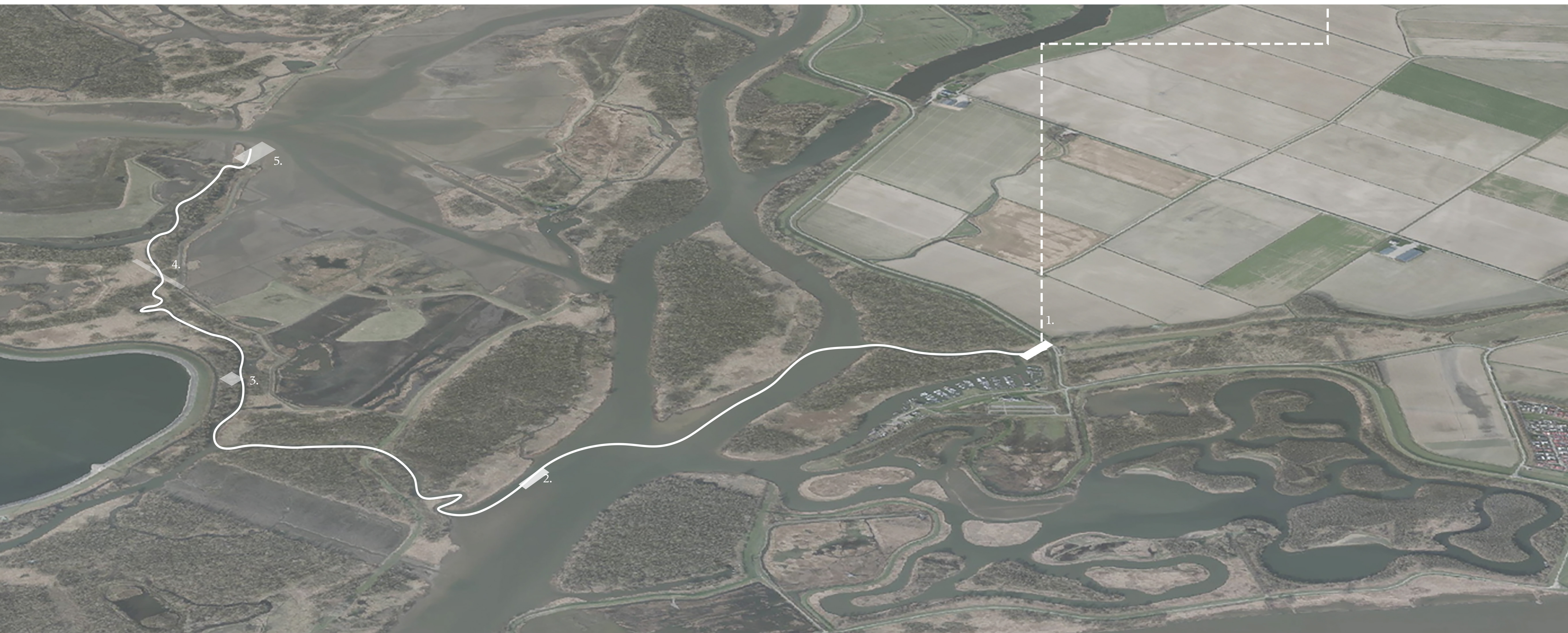
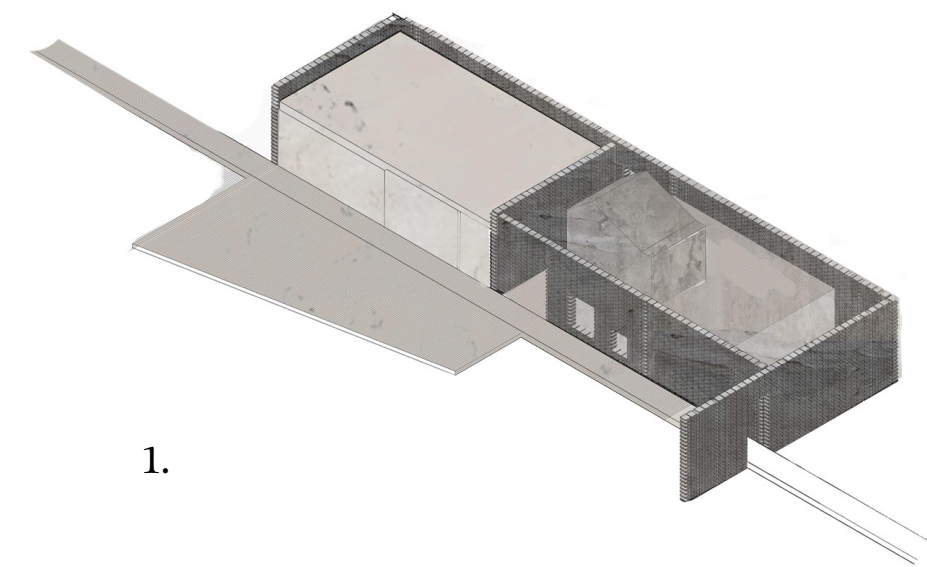
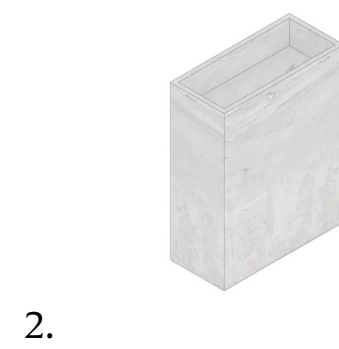
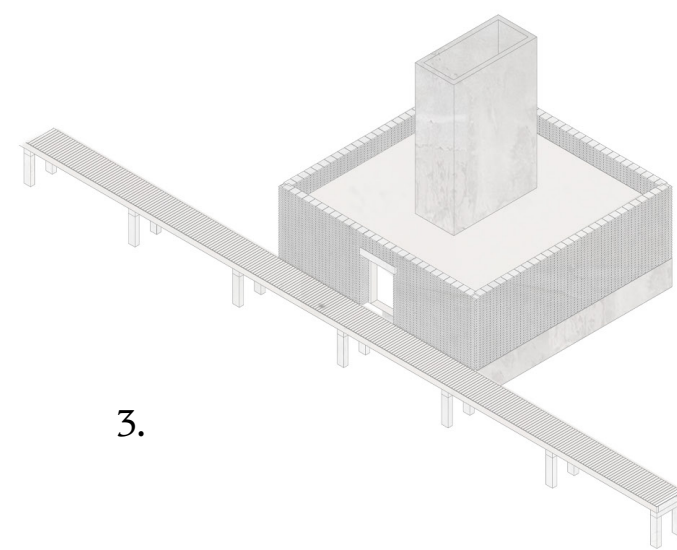
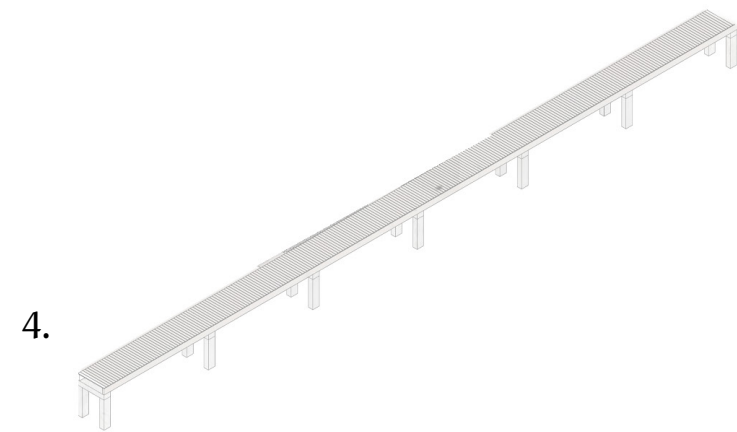
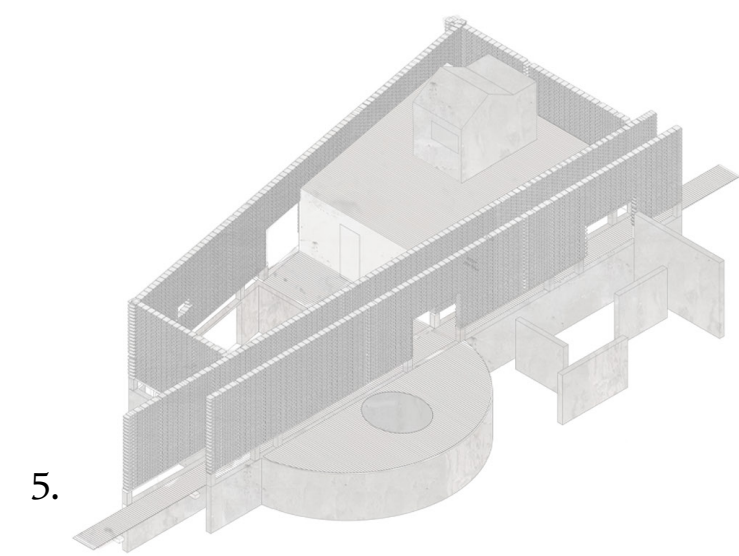




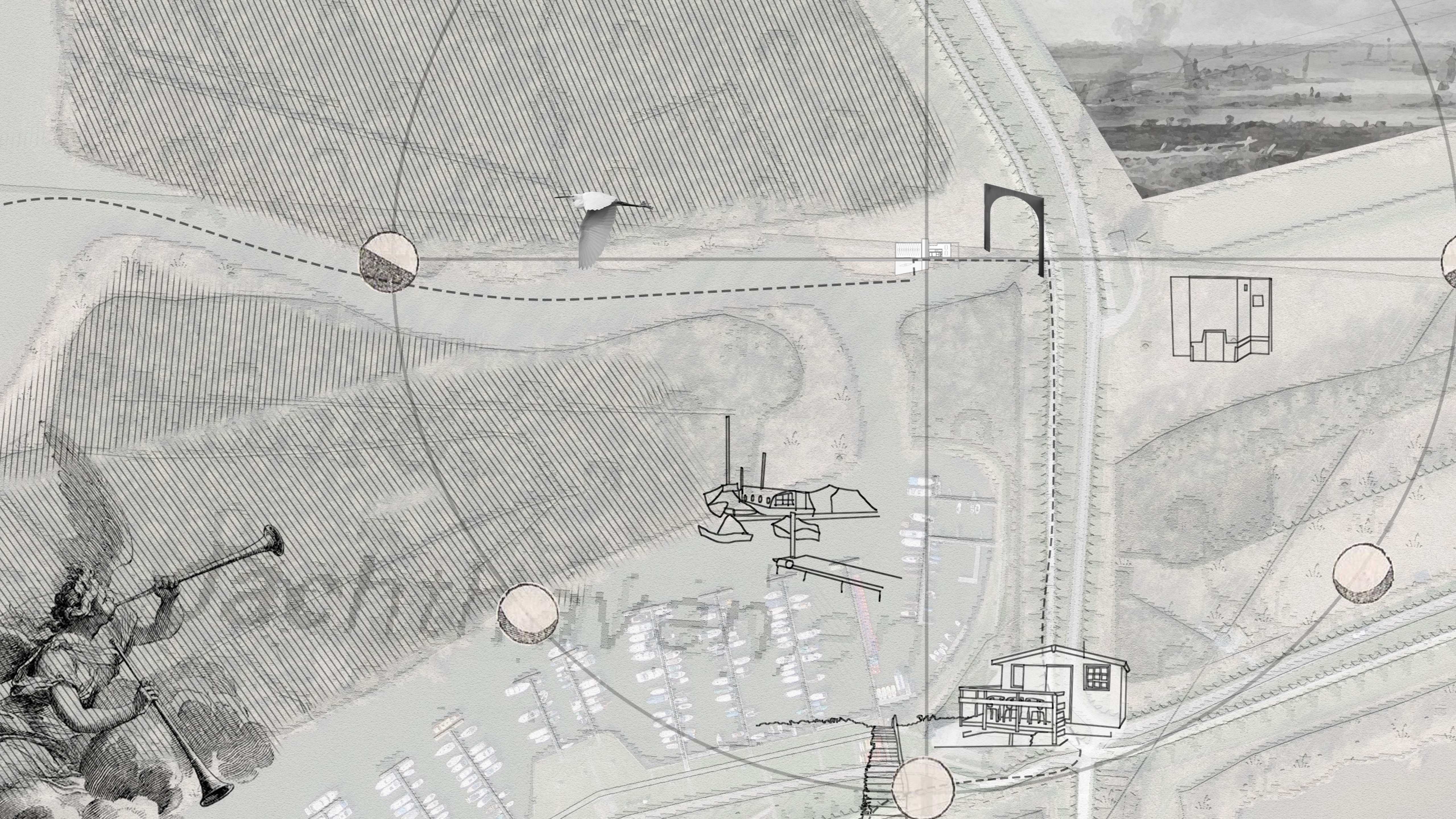








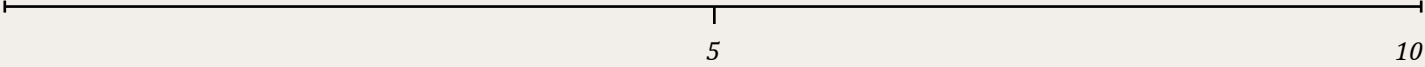




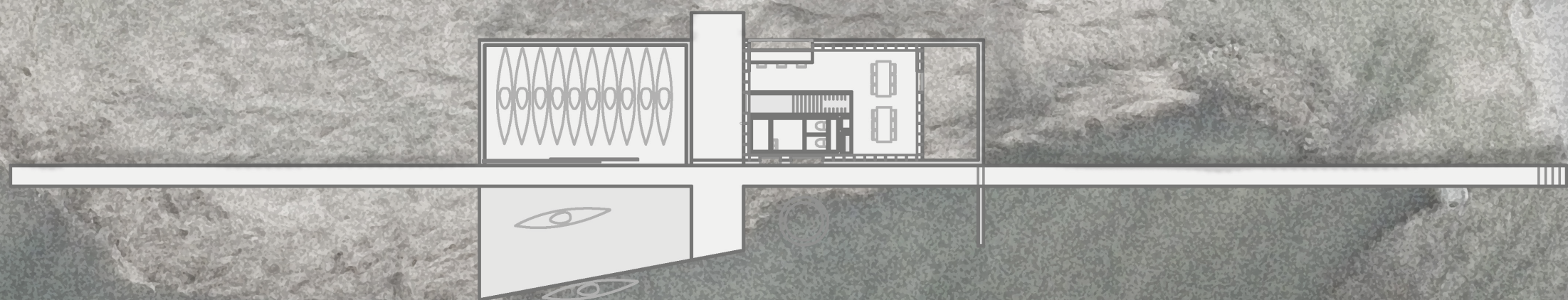




TRANSITION : Section. 1



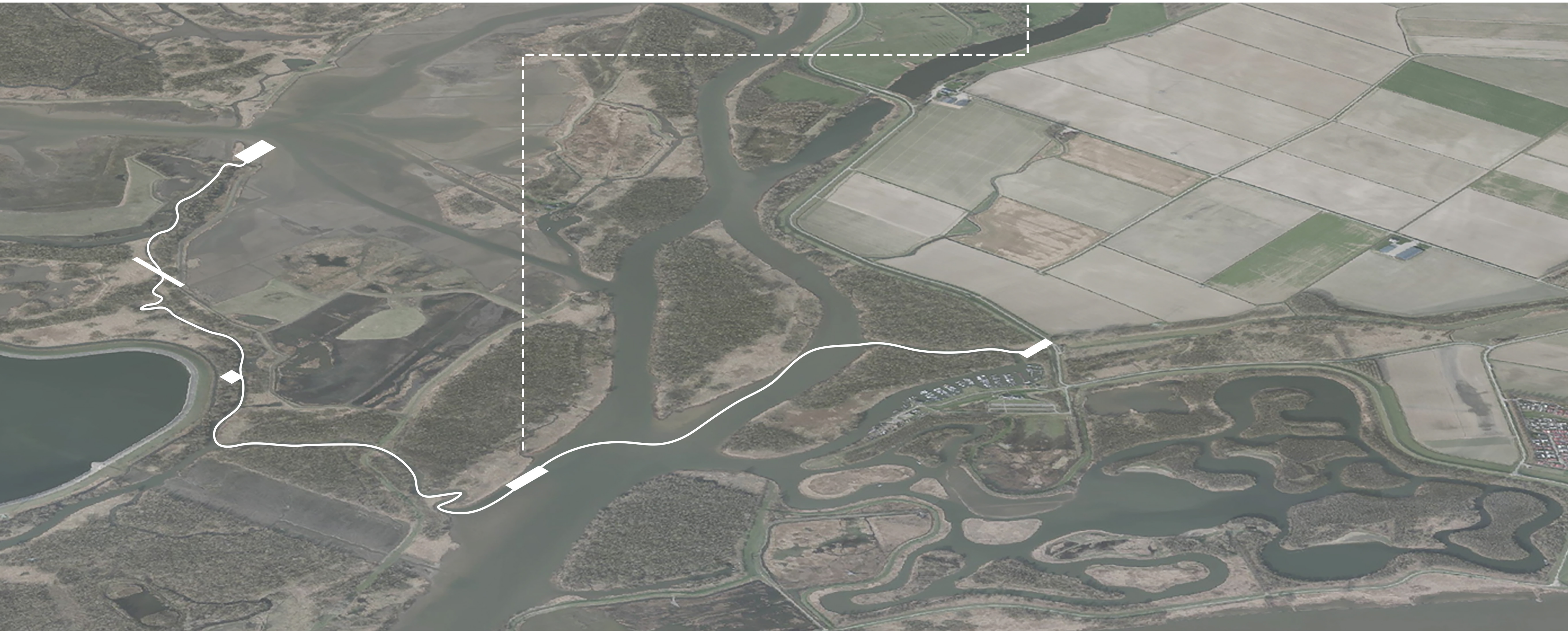
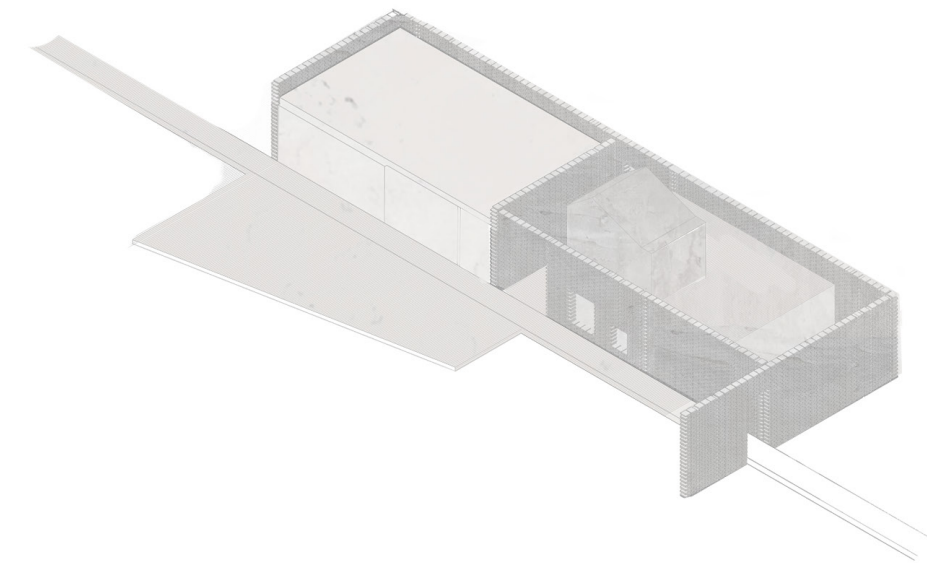
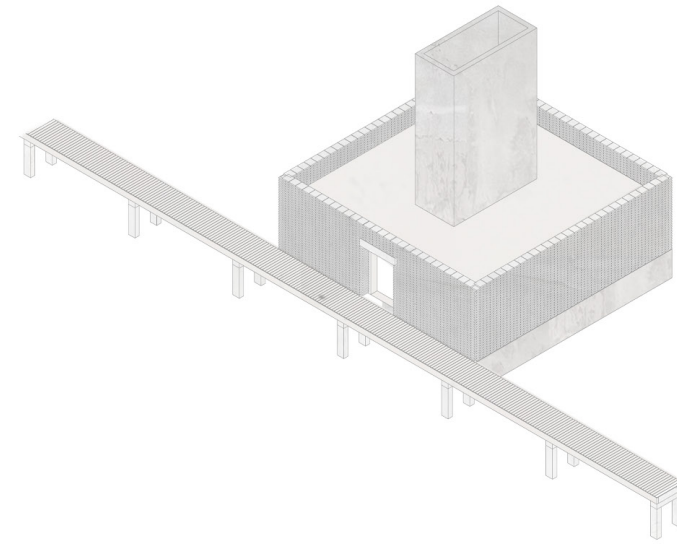
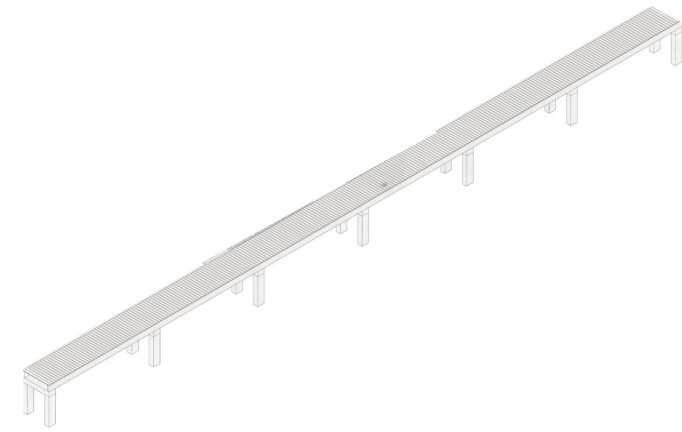
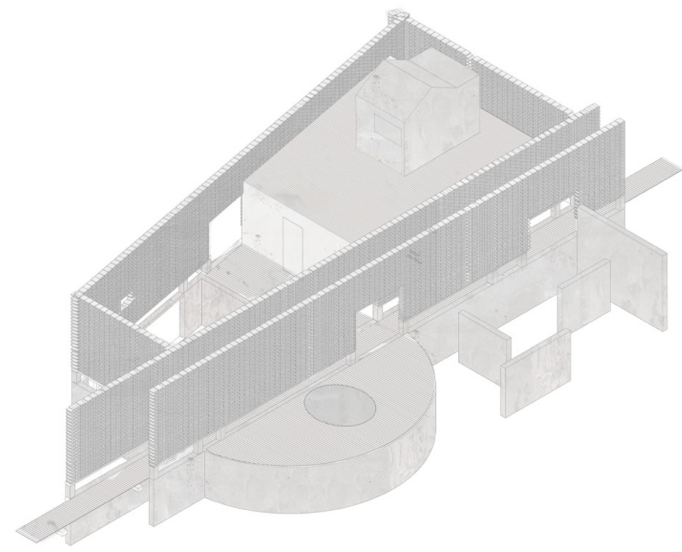












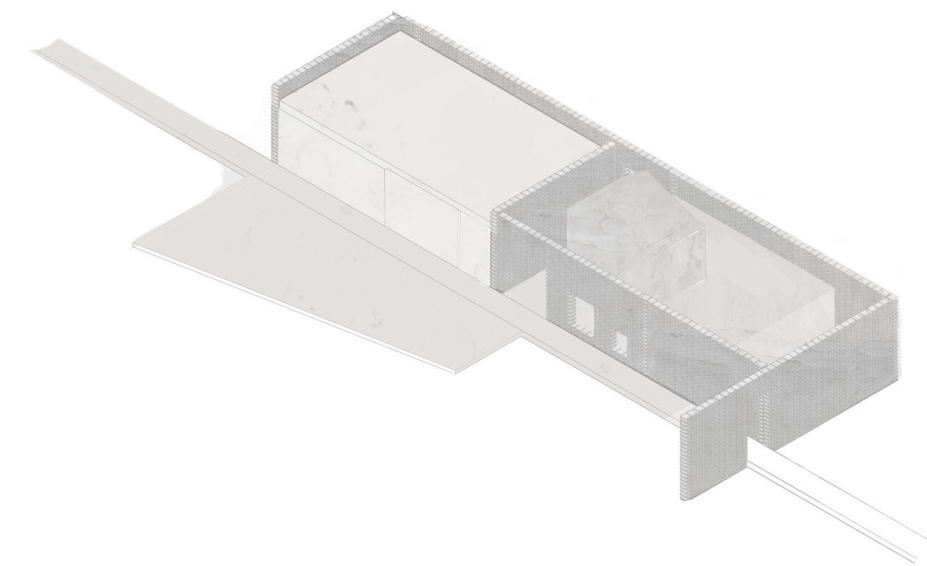
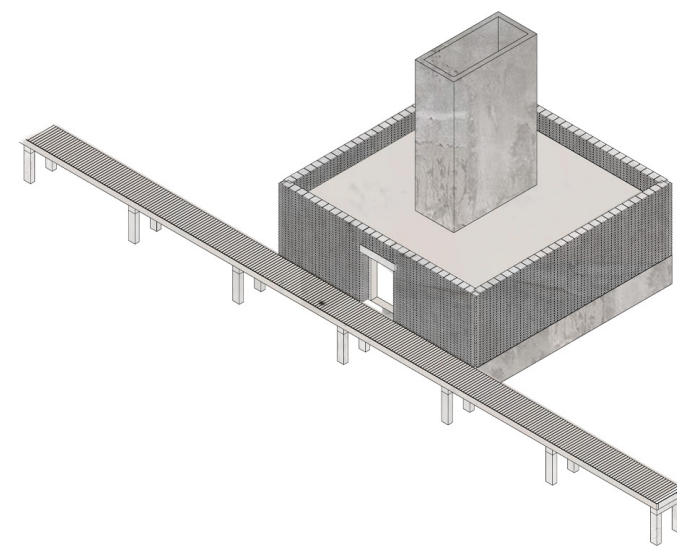
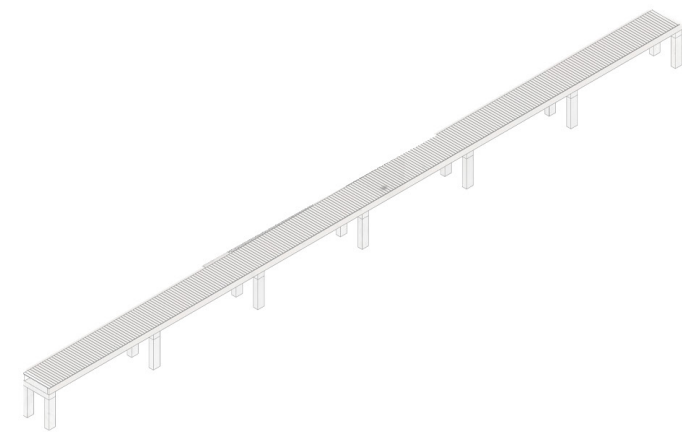
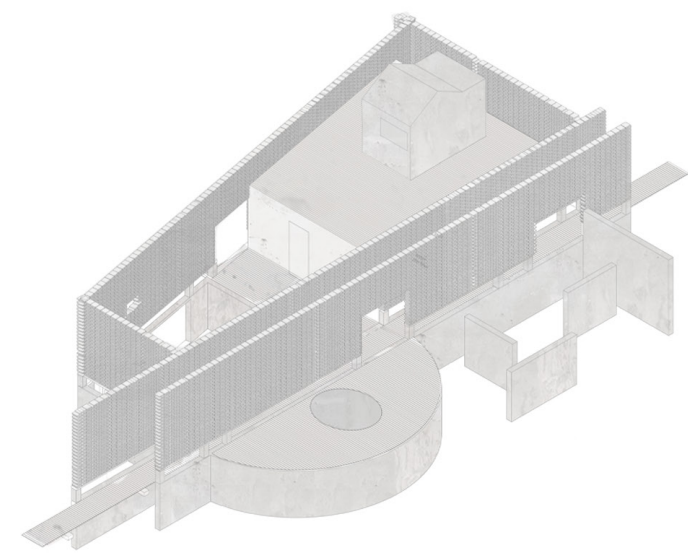




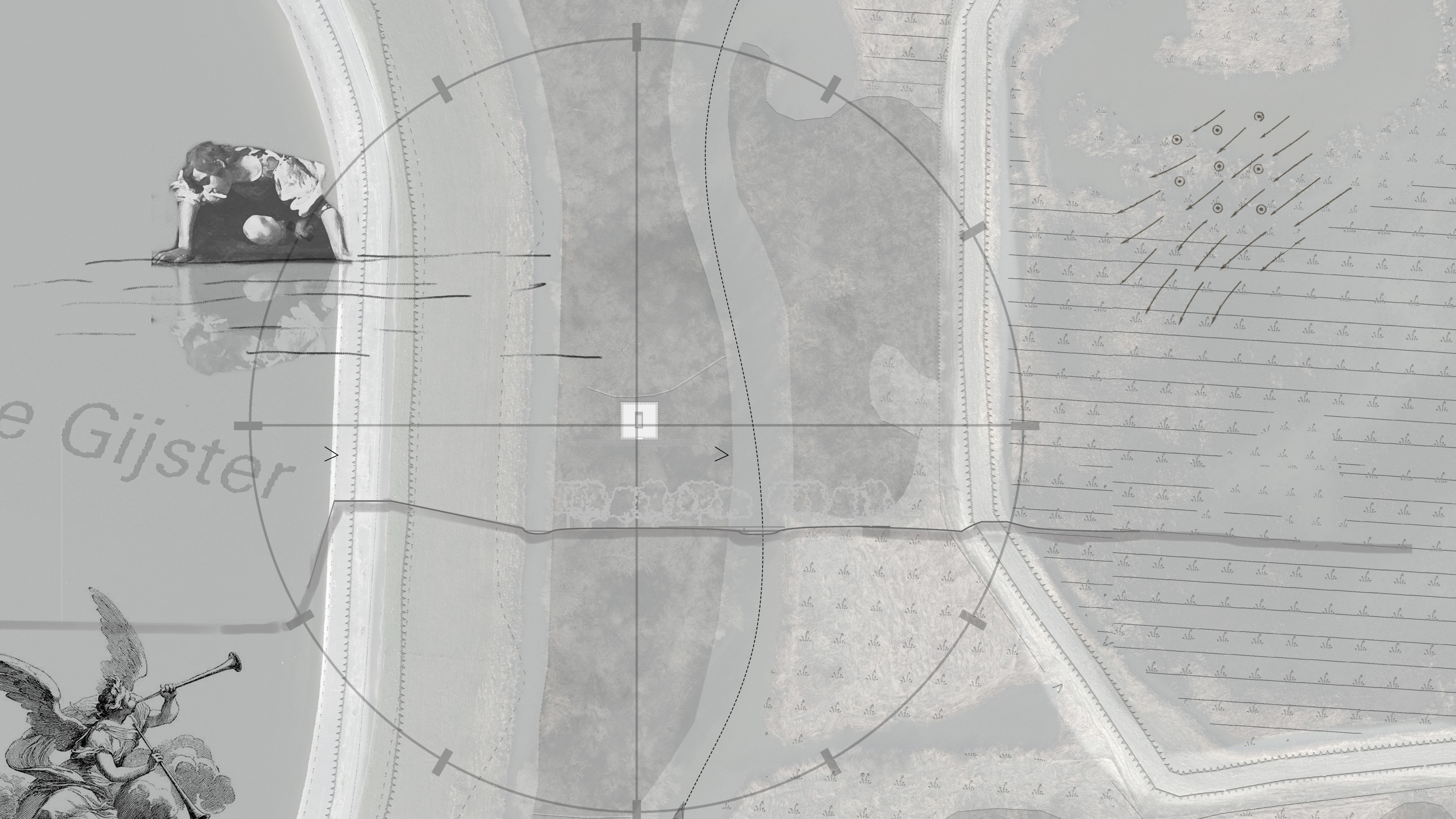












e Gijster

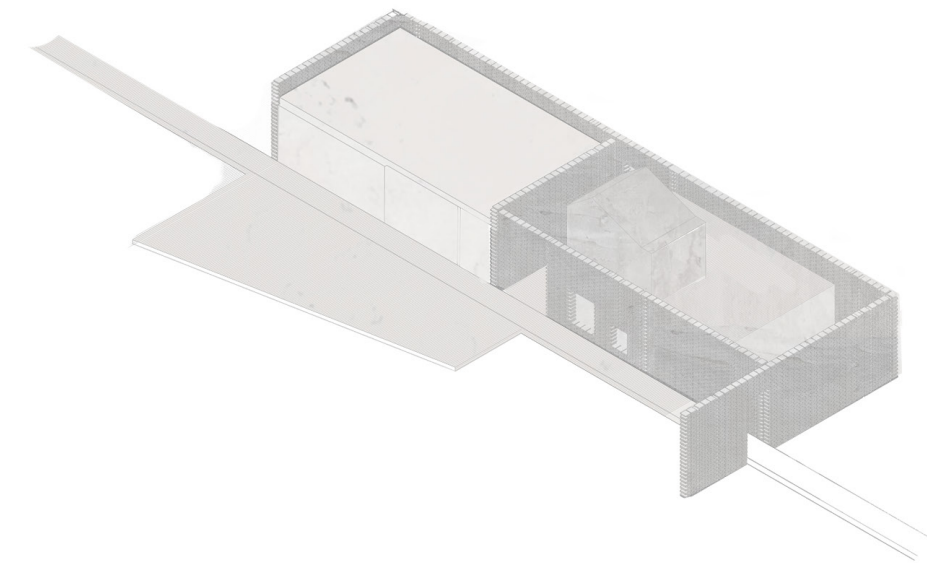
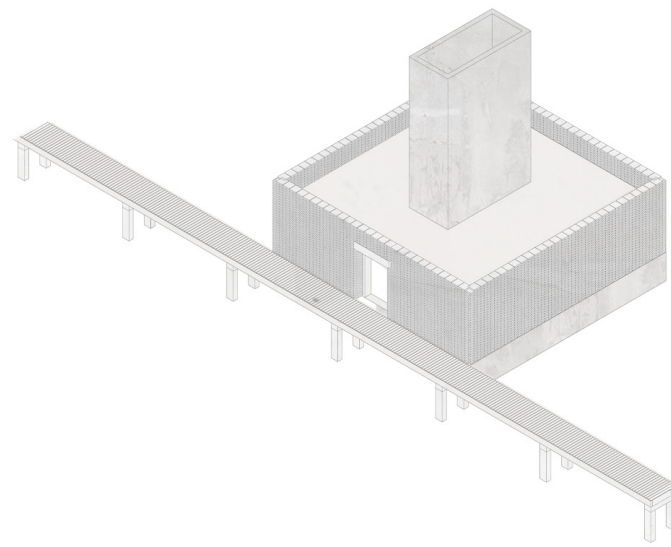
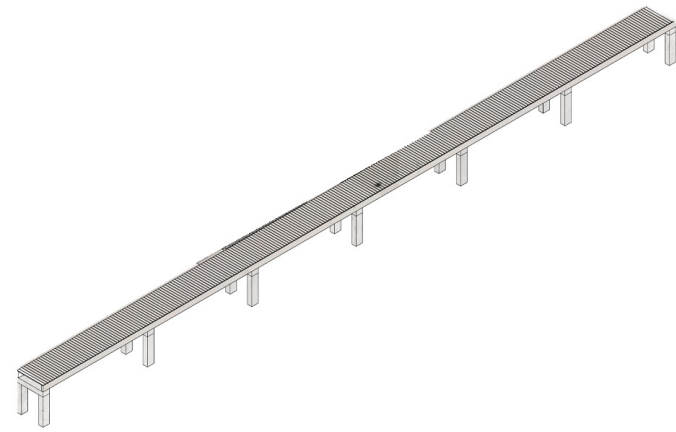
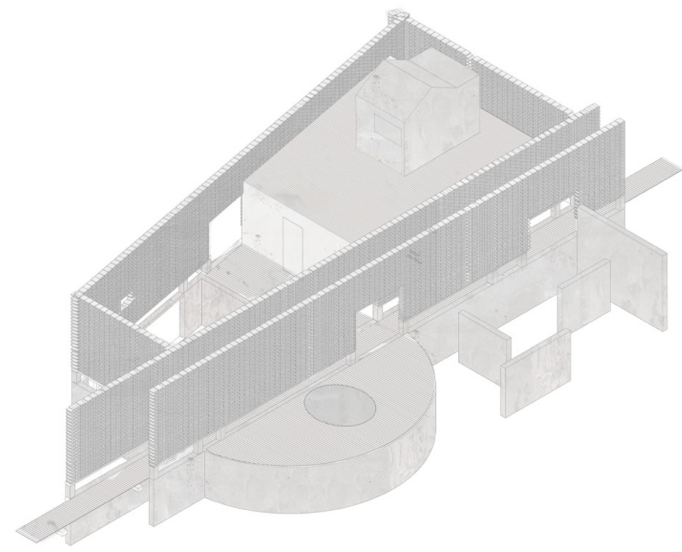








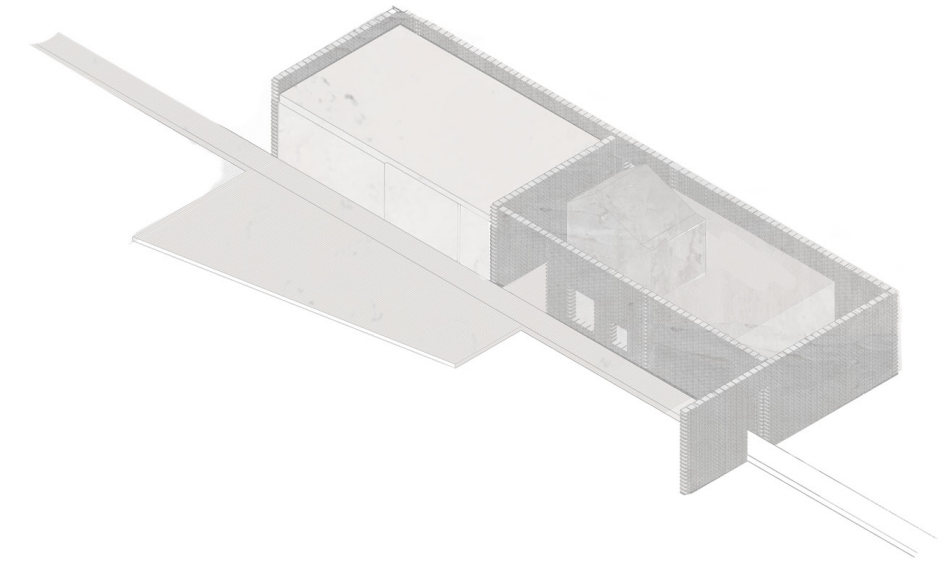
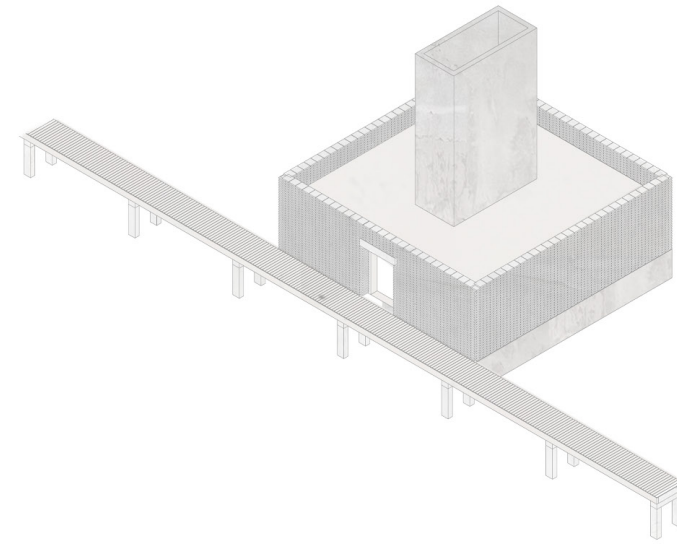
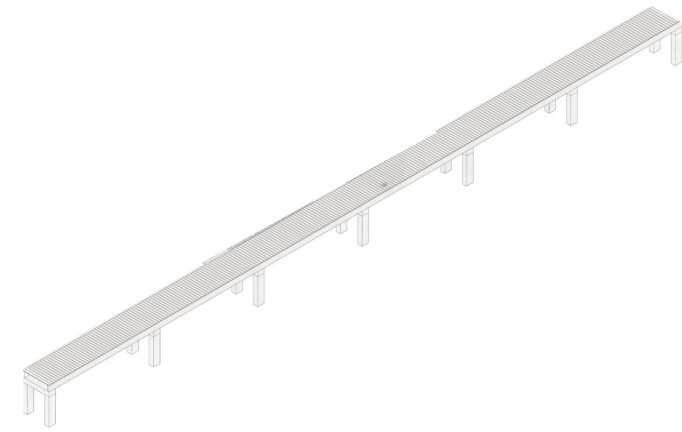
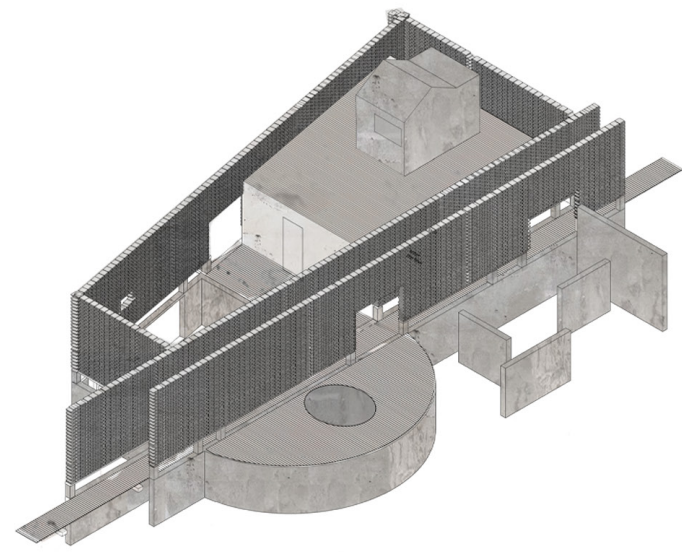
















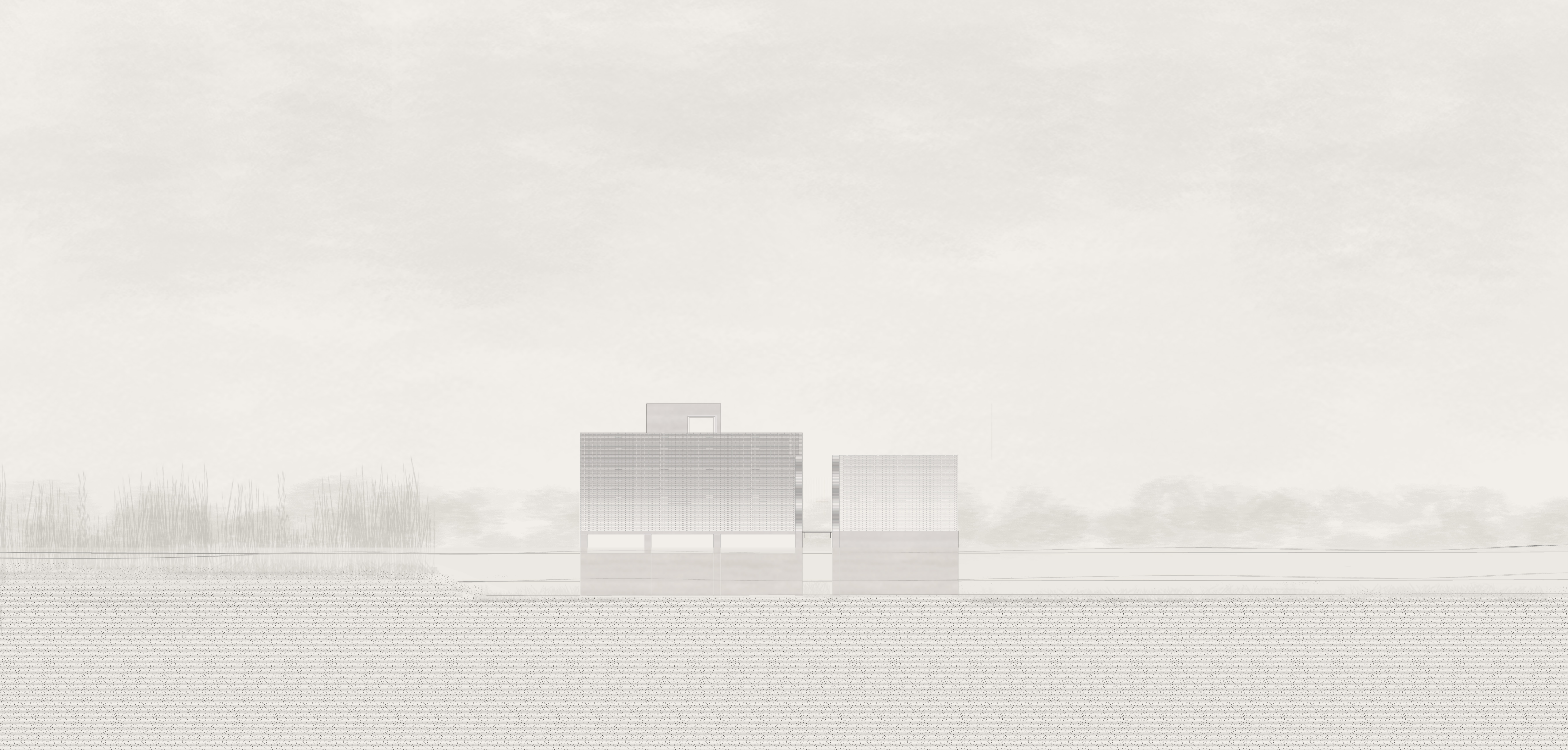








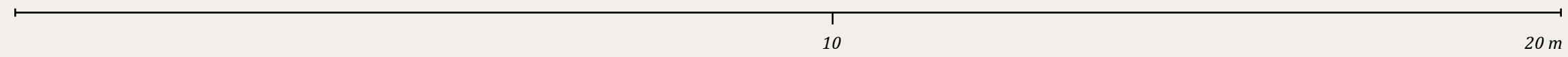




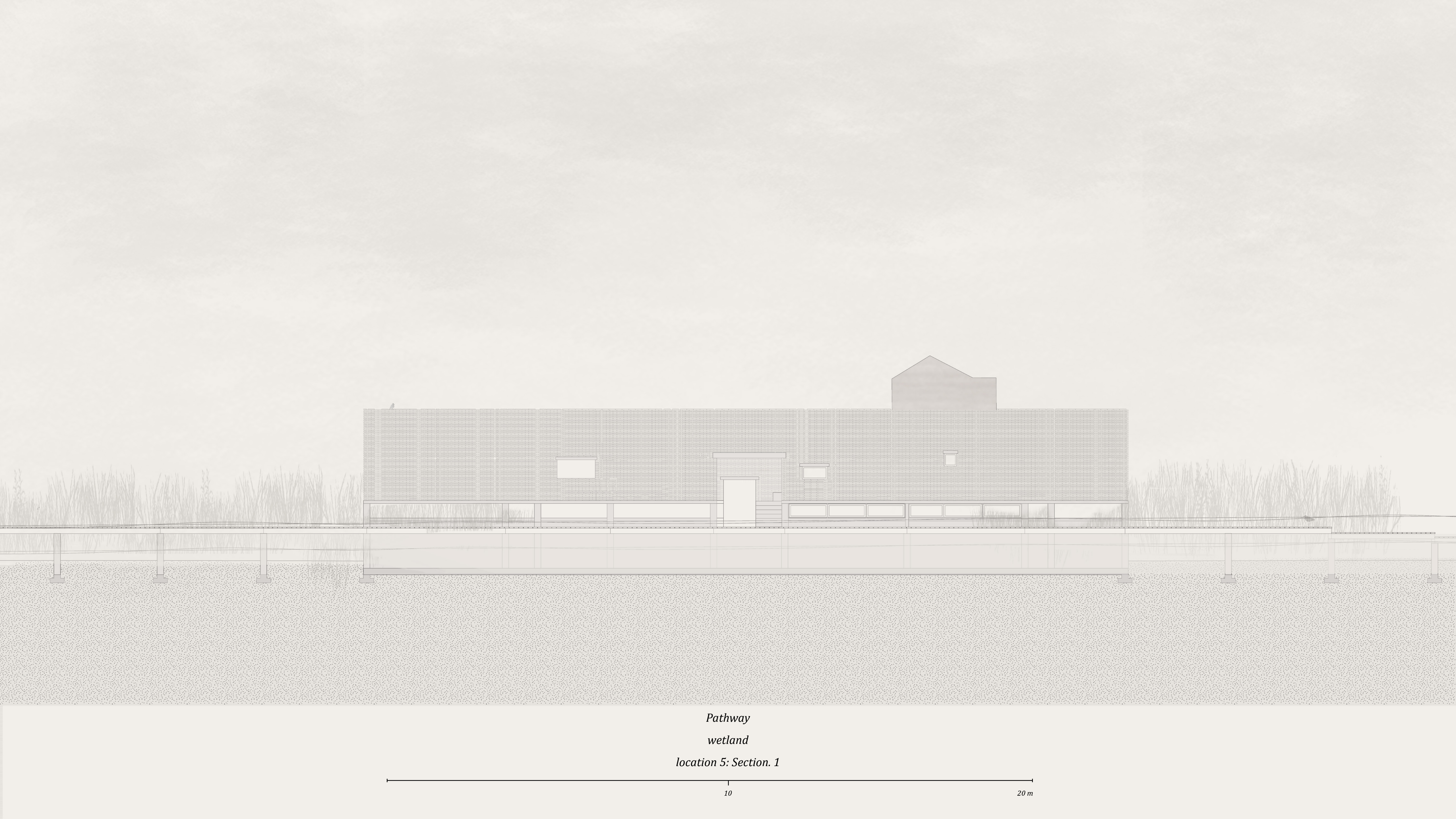
*Entrance*

*wetland*

*location 5 : South elevation*







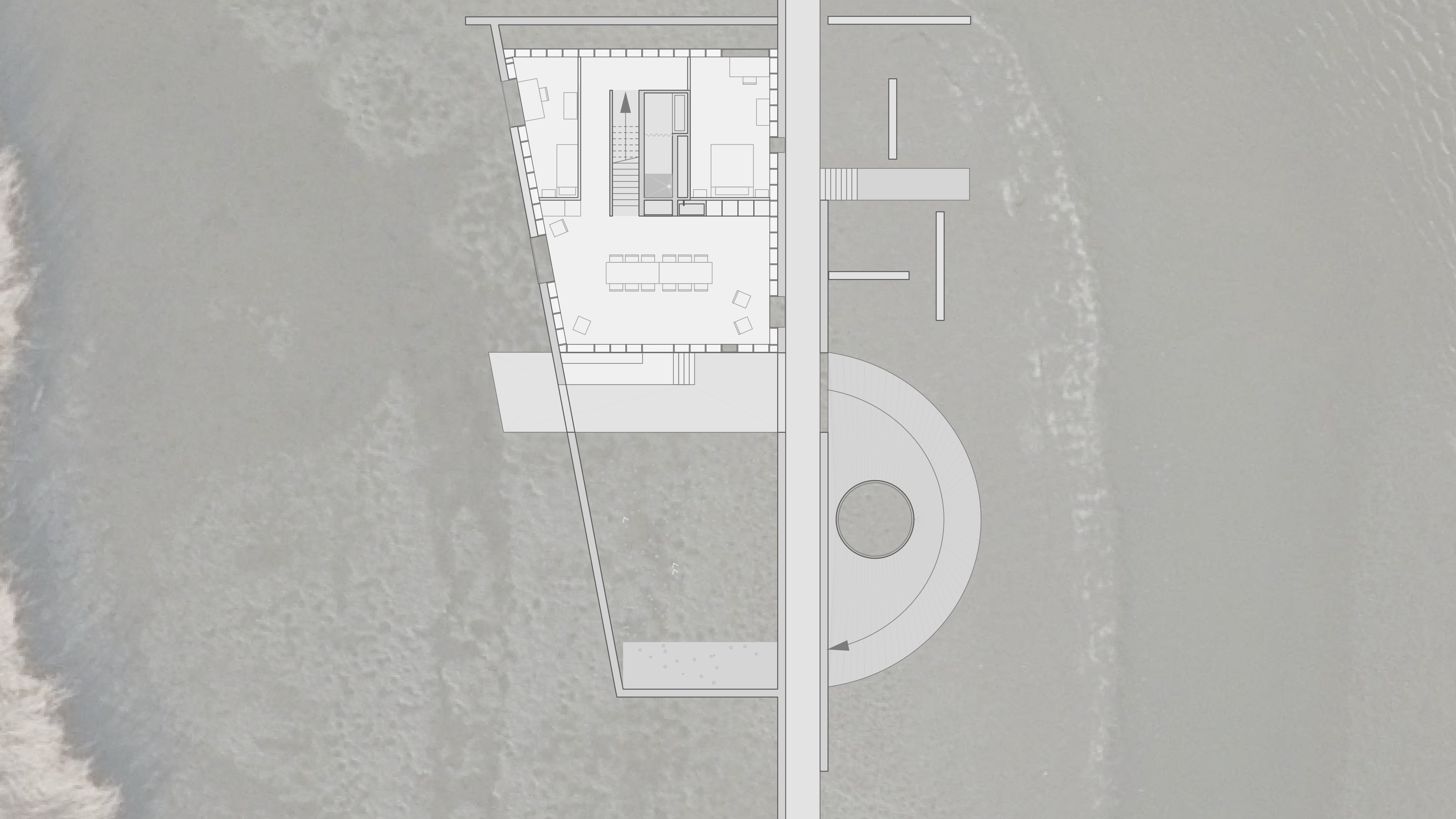
*Pathway*

*wetland*

*location 5: Section. 1*











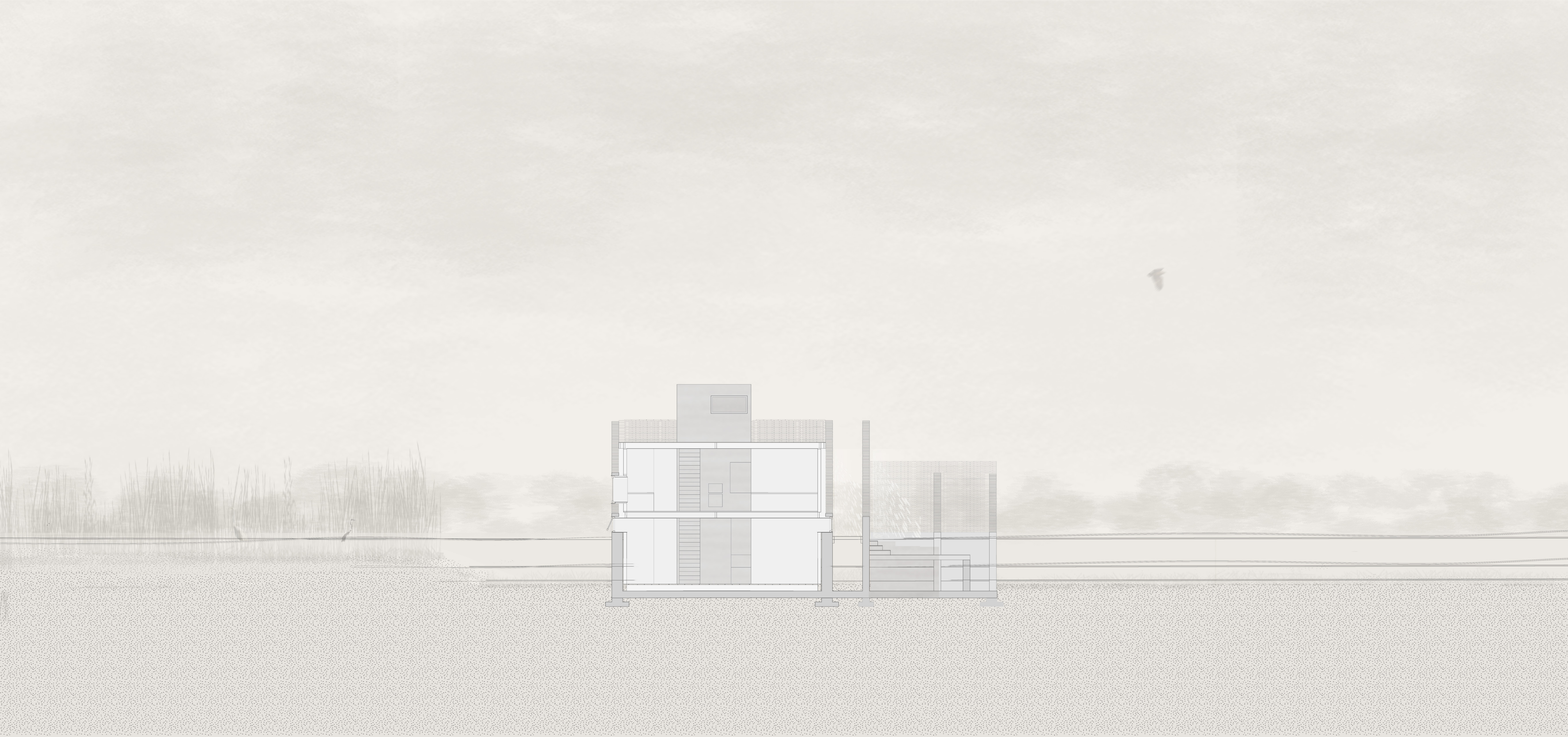
*Entrance interior*

*wetland*

*Location 5 : Section. 2*







*Interior*

*Wetland*

*Location 5 : Section. 3*





