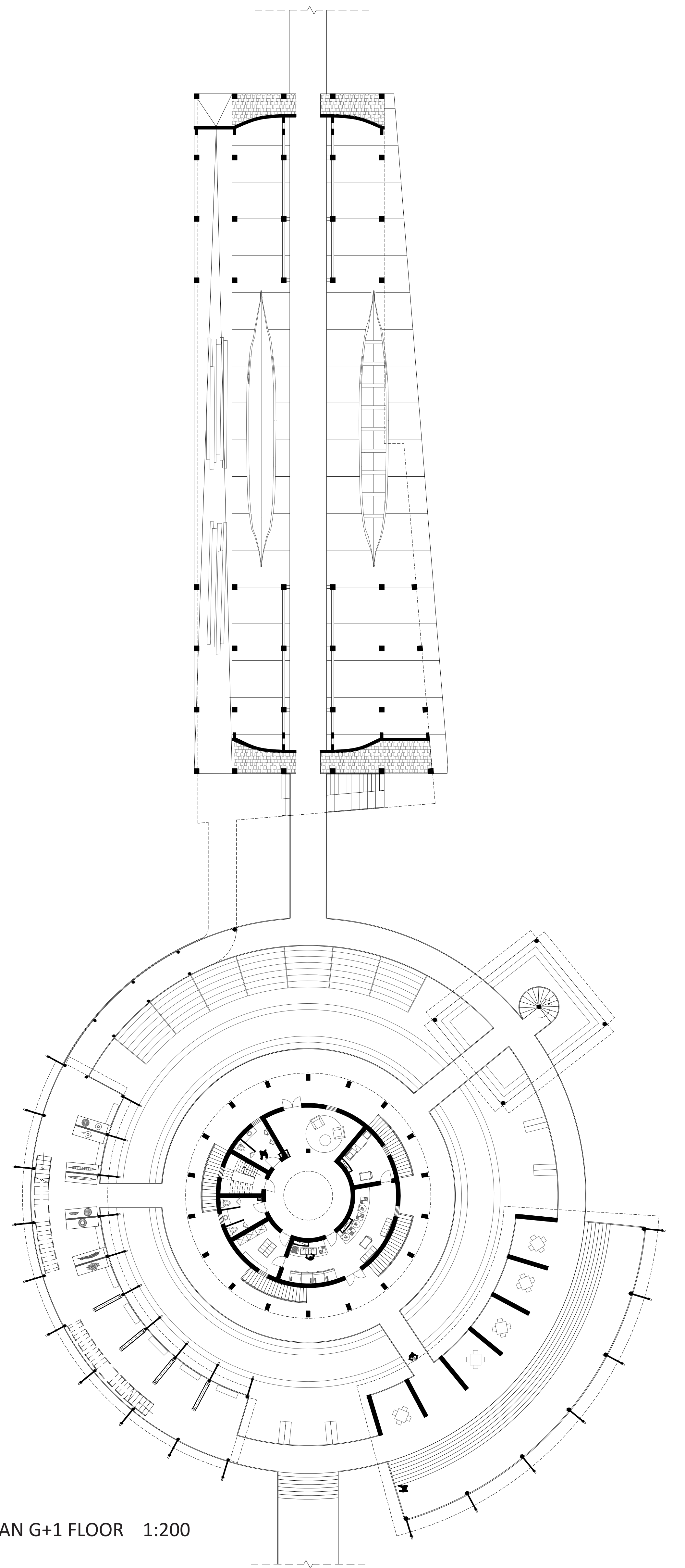
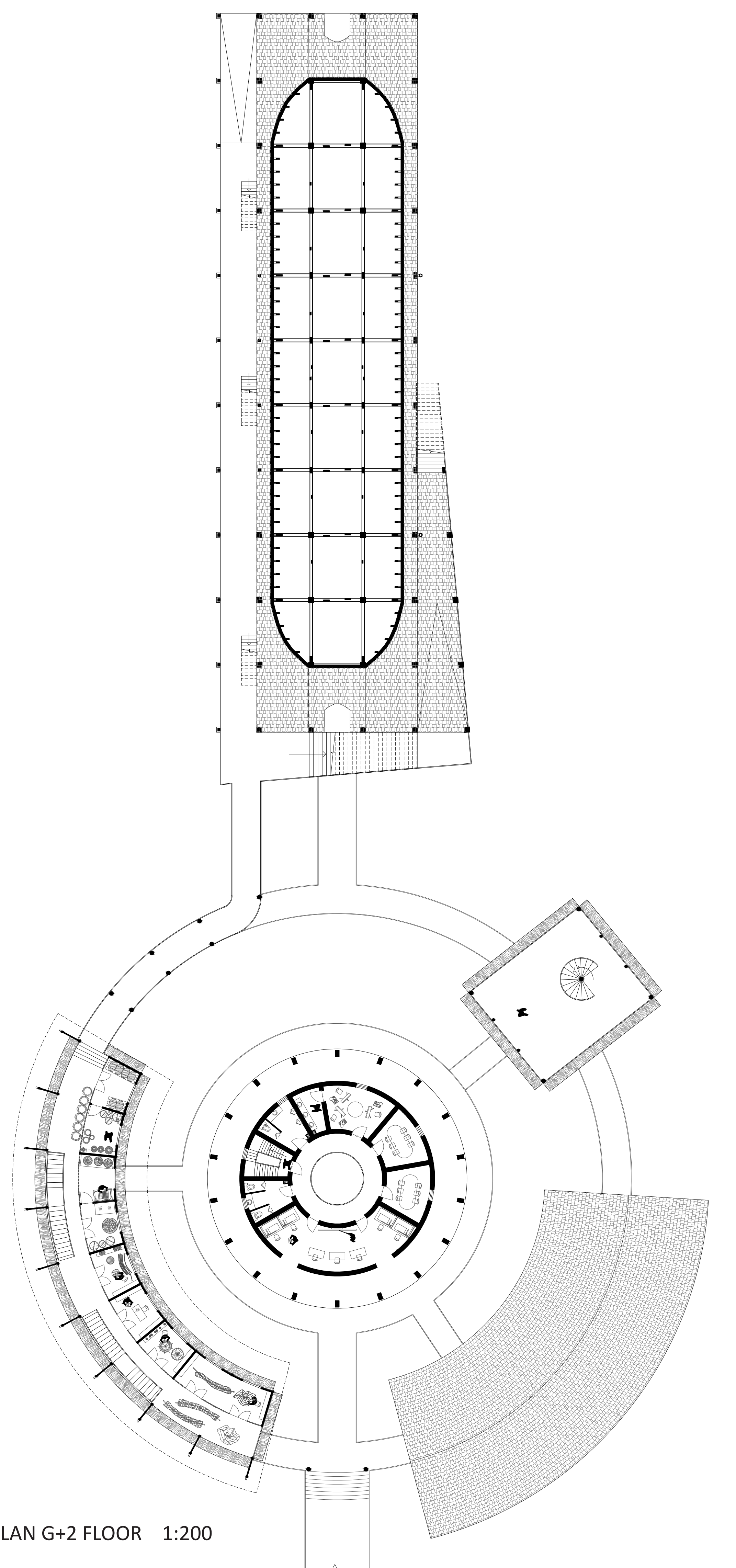


MASTERPLAN G FLOOR 1:200

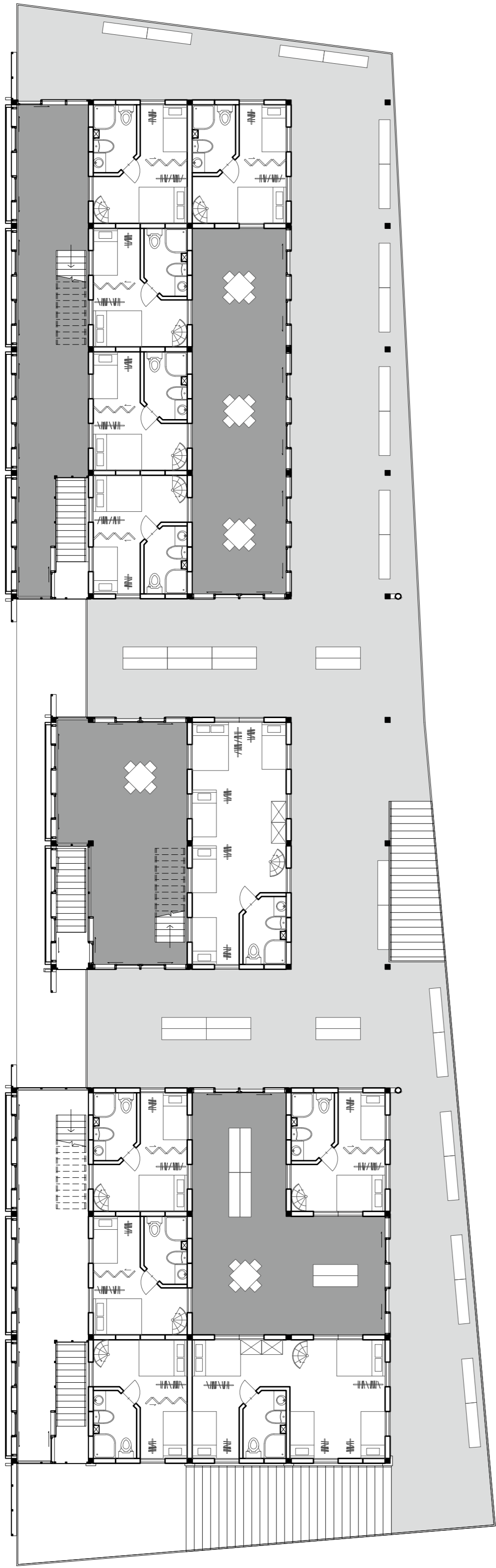
MASTERPLAN G+1 FLOOR 1:200



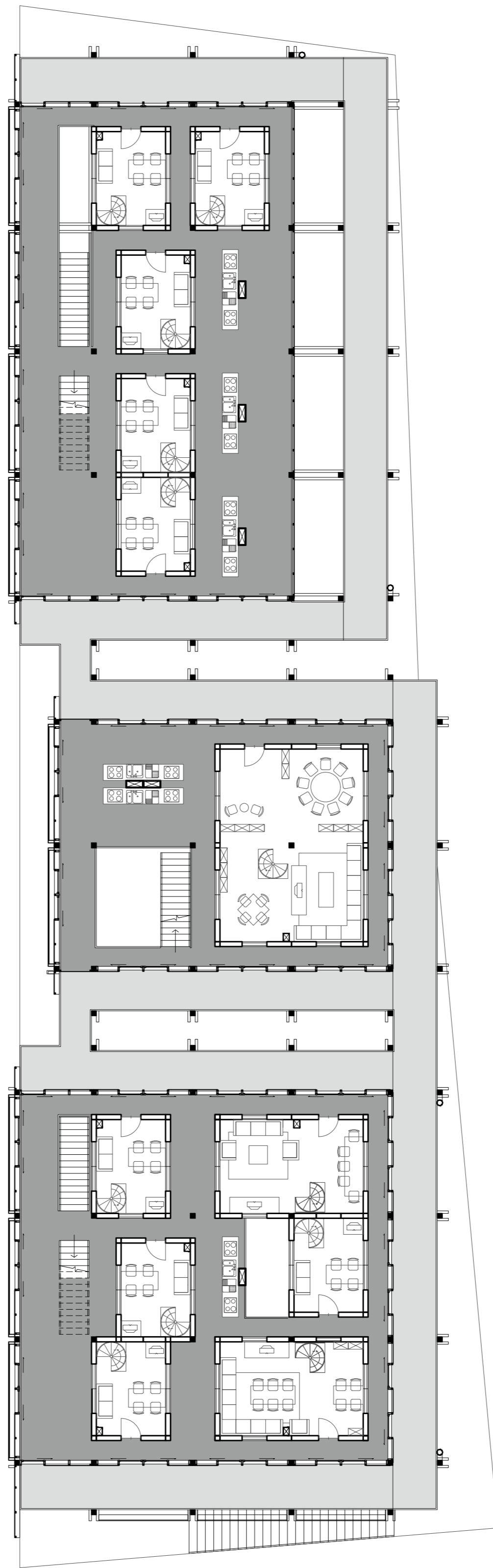
MASTERPLAN G+2 FLOOR 1:200



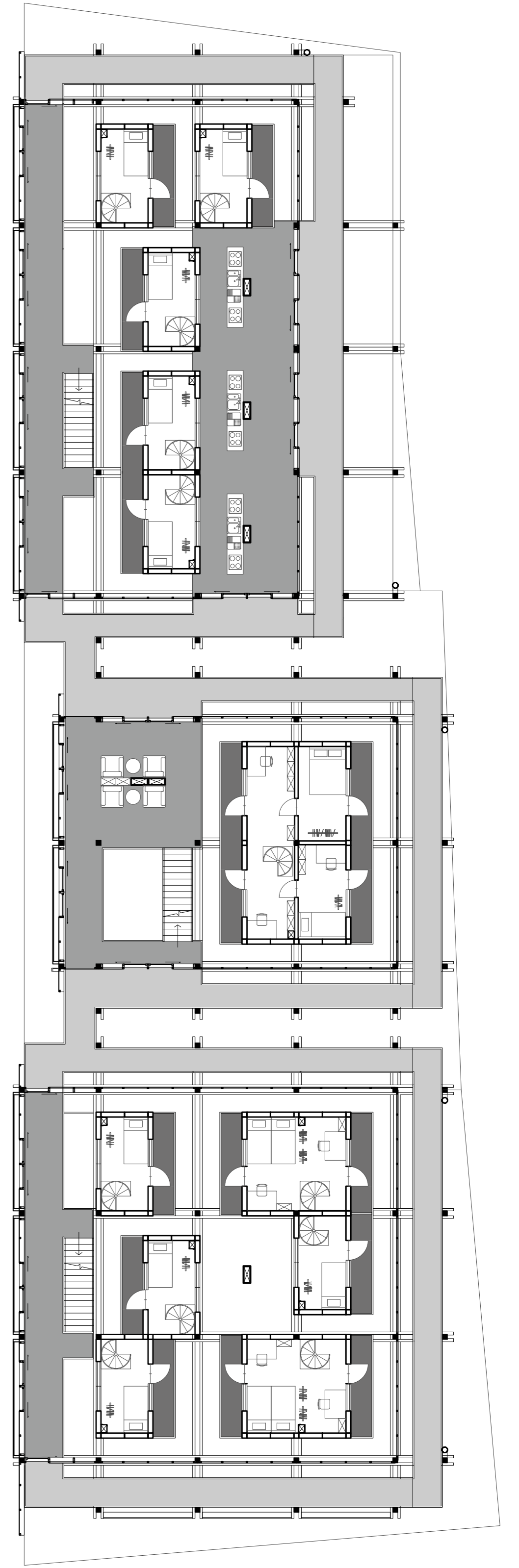
# DWELLING



G FLOOR 1:150



G+1 floor 1:150



G+2 floor 1:150

## HOUSEHOLD AND LAYOUT TYPOLOGY



Typical space 1: balcony towards the street



Typical space 2: irregular alleys in the neighborhood



Typical space 3: semi-public living area along the street



Typical space 4: private area at the back and on top

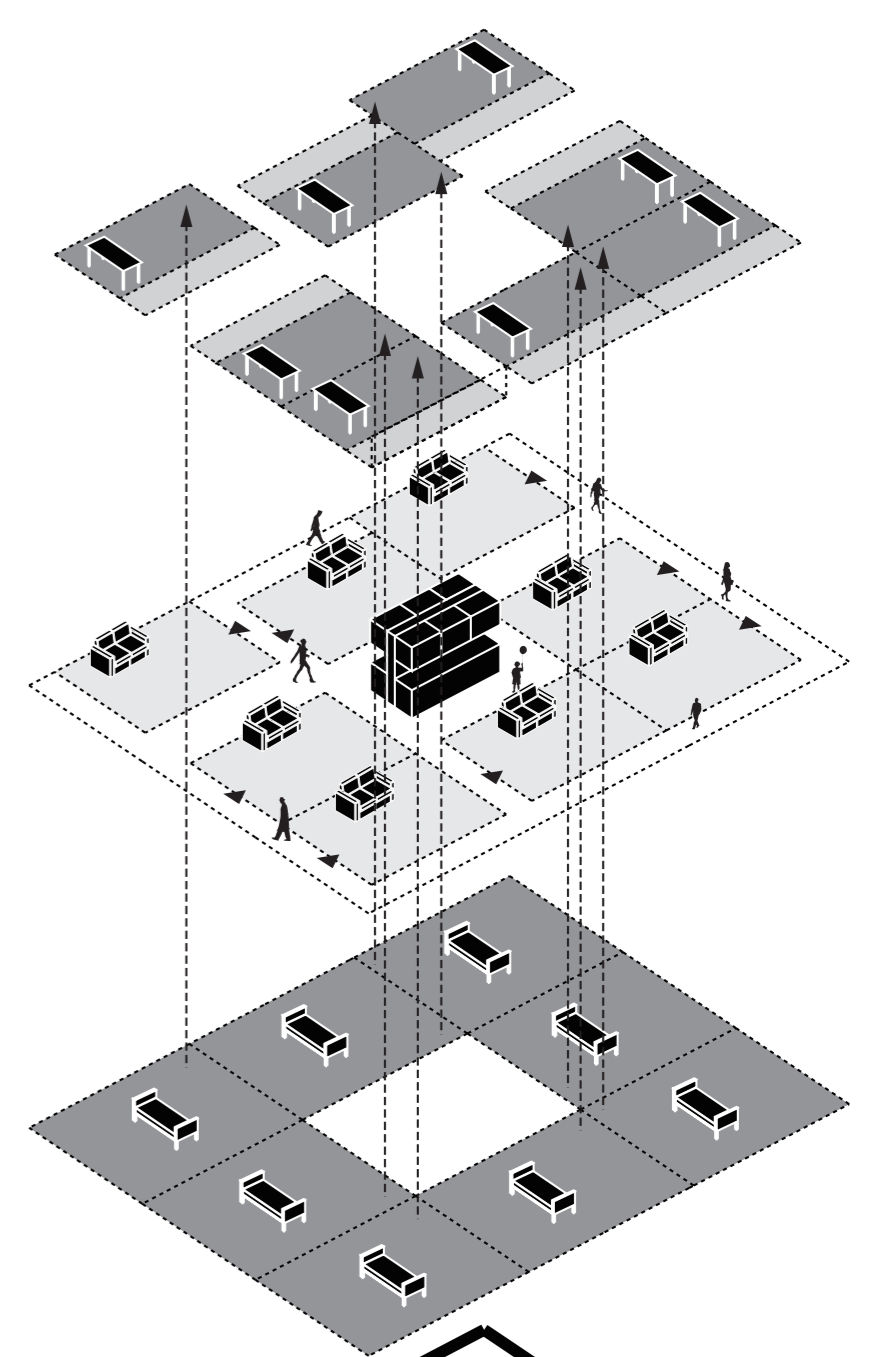
PRIVATE



PUBLIC

Proposed household cluster | 416 m<sup>2</sup>

Private indoor space | 326.4 m<sup>2</sup>  
 Semi-public irregular alleys | 89.6 m<sup>2</sup>  
 Shared kitchen | 20 m<sup>2</sup>  
 Households | >5  
 People | >40



G+2 floor | 12 m<sup>2</sup>

Extra bedroom or study | 8.8 m<sup>2</sup>  
 Terrace | 3.2 m<sup>2</sup>

G+1 floor | 20 m<sup>2</sup>

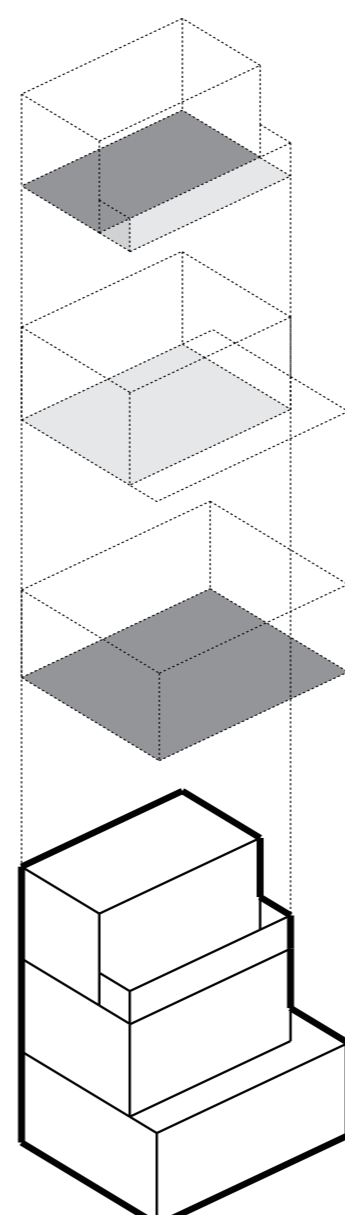
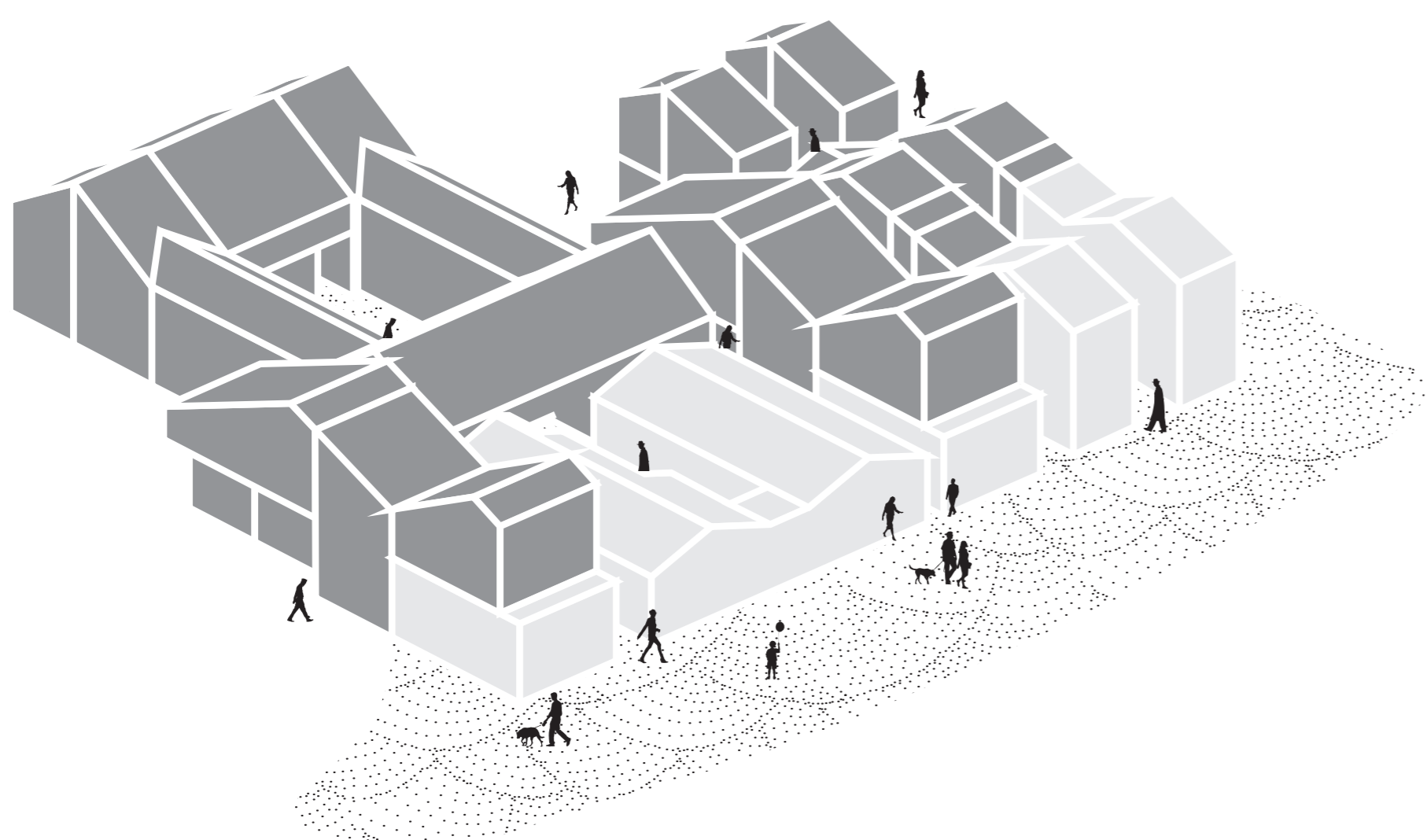
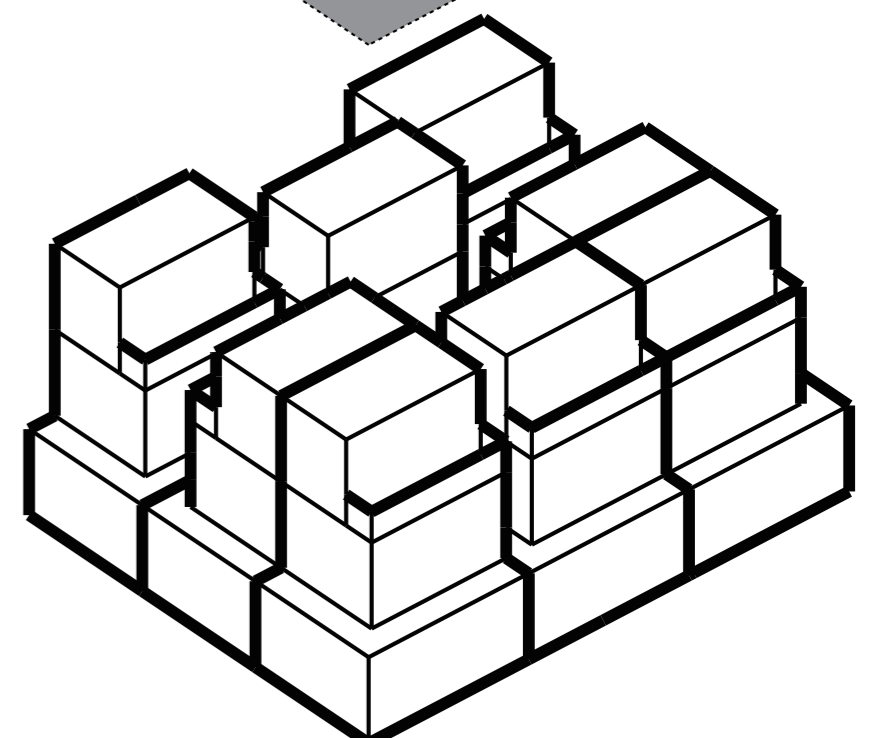
Living room | 12 m<sup>2</sup>  
 Outdoor pavement | 8 m<sup>2</sup>

G floor | 20 m<sup>2</sup>

Bedrooms | 20 m<sup>2</sup>

Proposed household typology | 52 m<sup>2</sup>

Private indoor space | 40.8 m<sup>2</sup>  
 Semi-public outdoor space | 11.2 m<sup>2</sup>  
 People | >5



# BUILDING TECHNOLOGY

TILE ROOF

PREFABRICATED CONCRETE SLABS  
IN PUBLIC AREA

WOODEN STAIRCASES FOR VERTICAL  
CIRCULATION

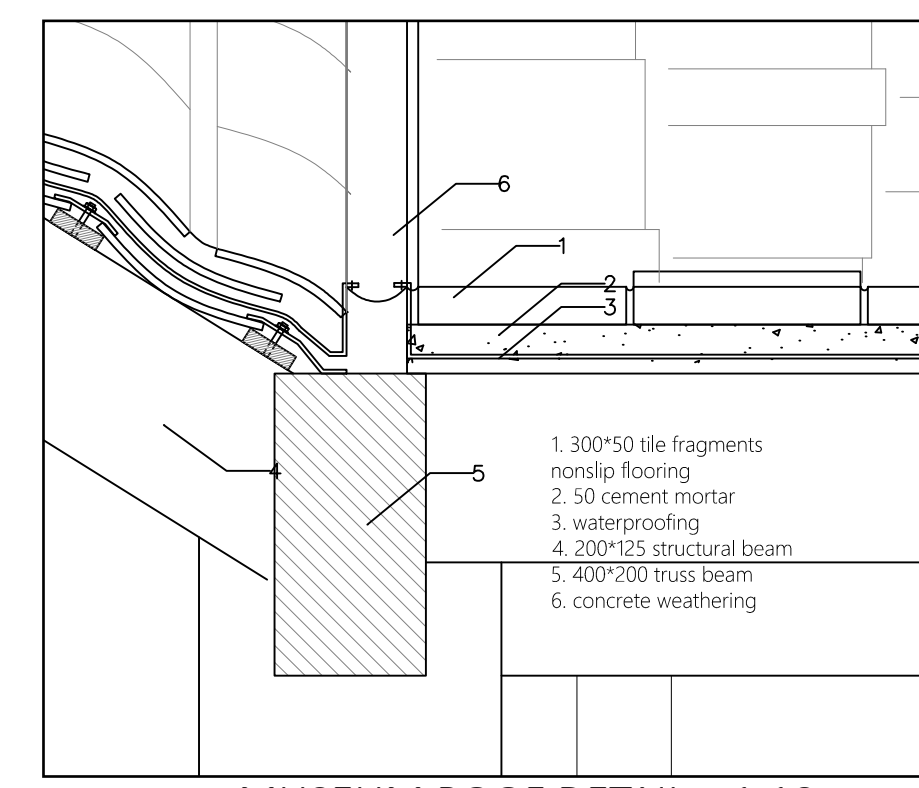
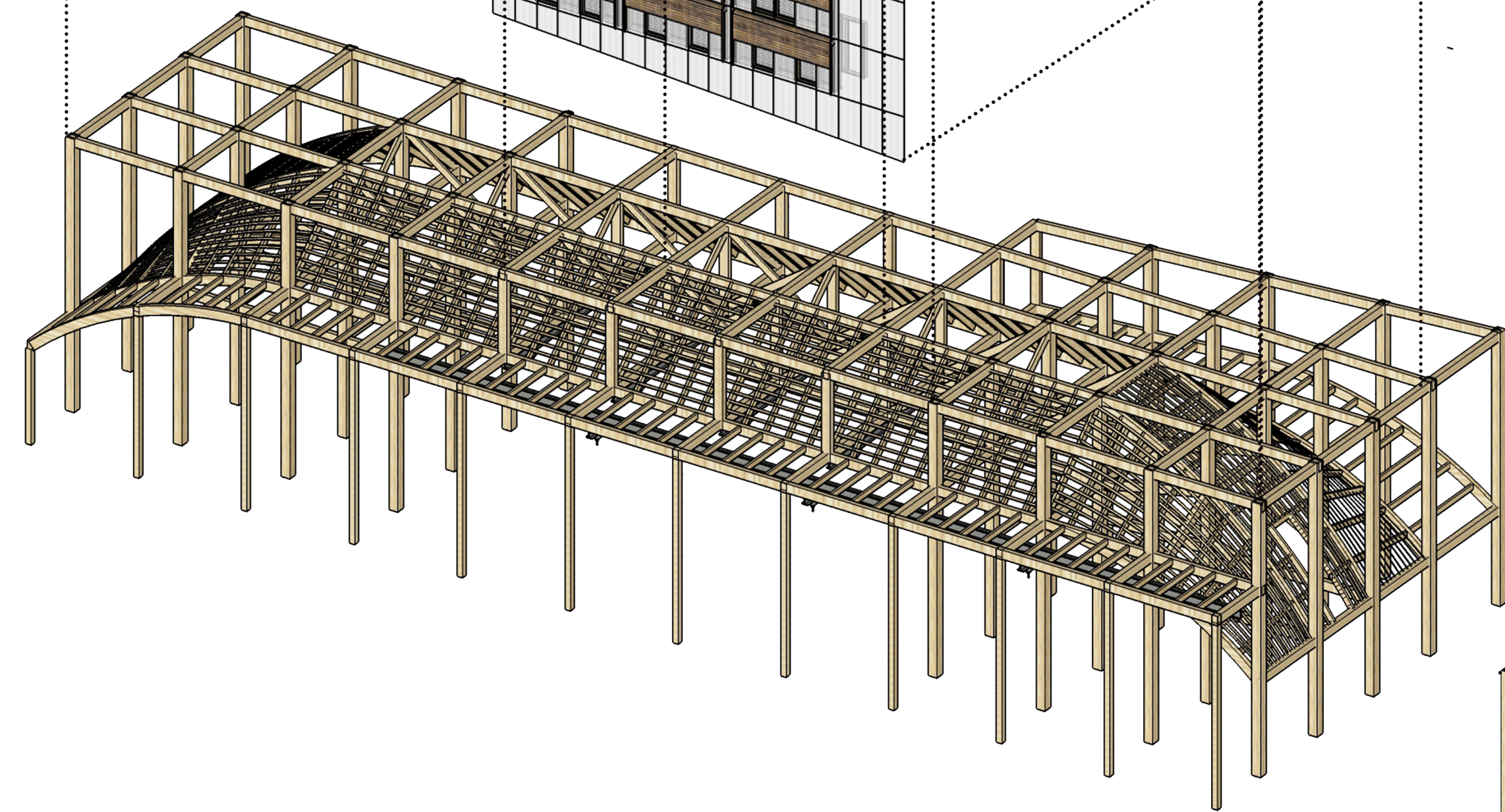
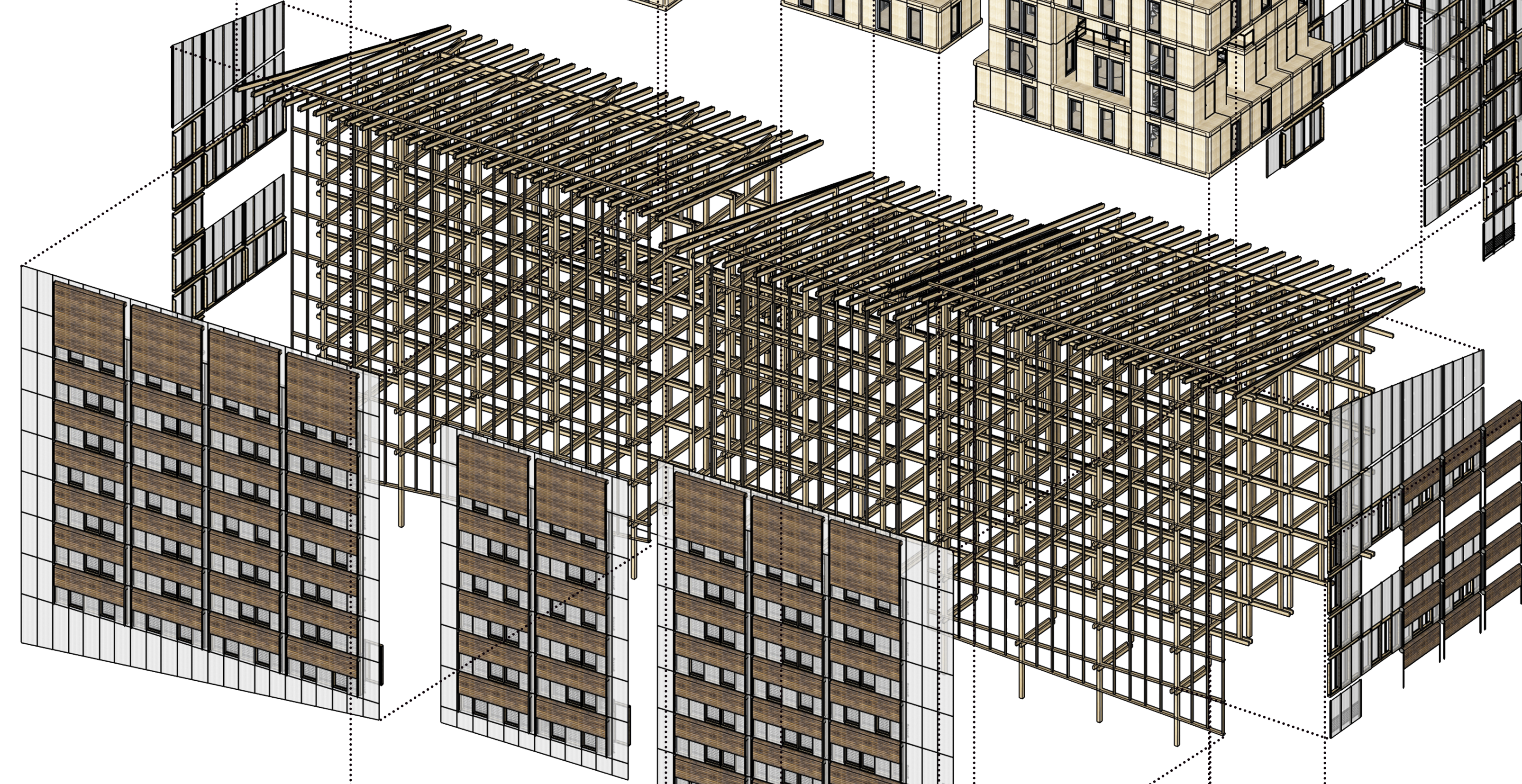
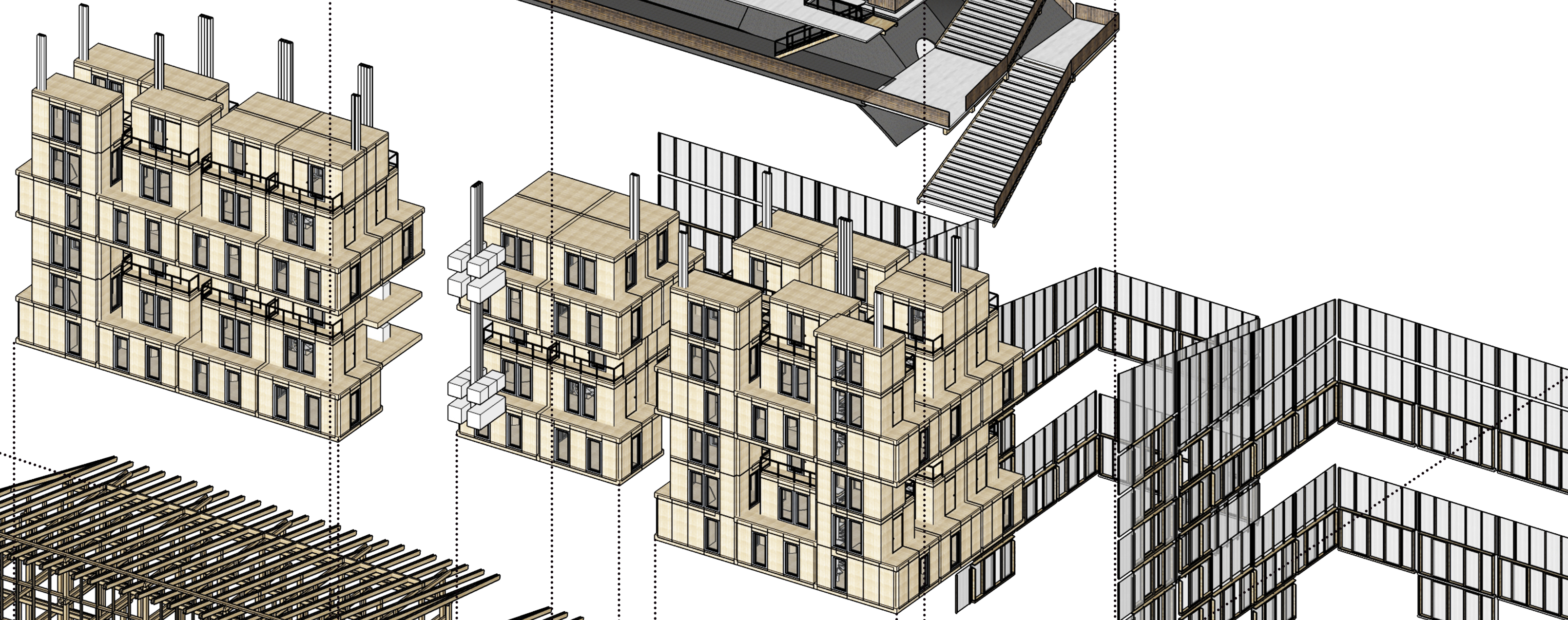
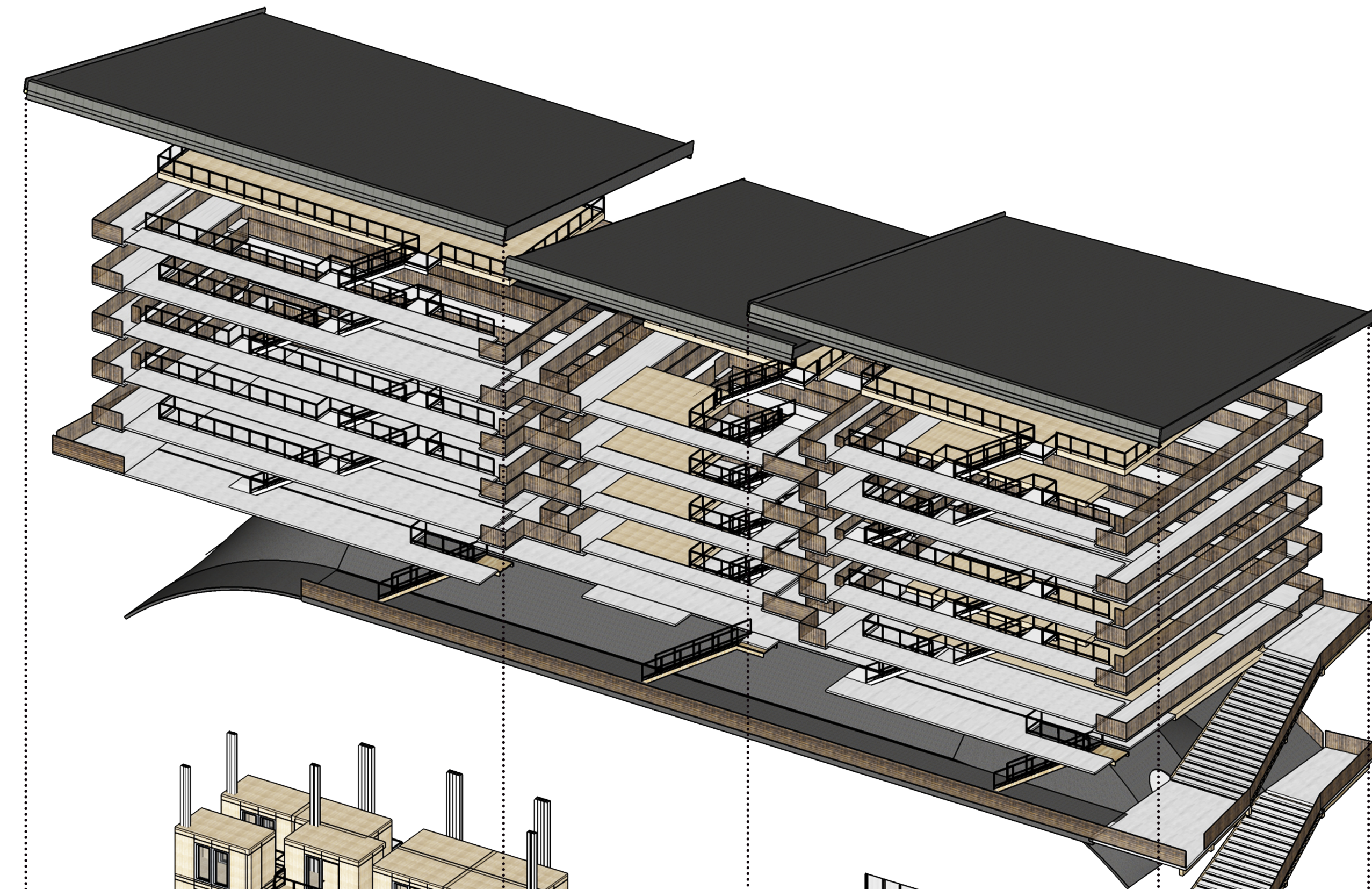
METAL-MASHED HANDRAILS FOR  
INTERIOR SPACE WITH BAMBOO  
HANDRIALS FOR EXTERIOR SPACE

THE DWELLING HOUSEHOLDS

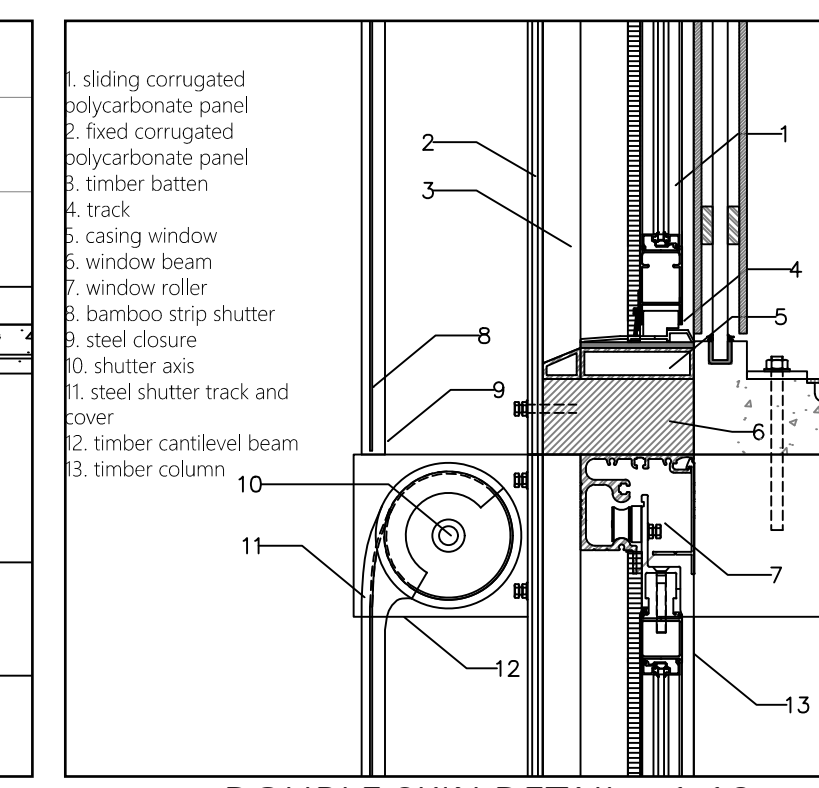
THE POLYCARBONATE  
FACADE & PRIMARY  
TIMBER STRUCTURE

THE BAMBOO ROLLING  
SHUTTER

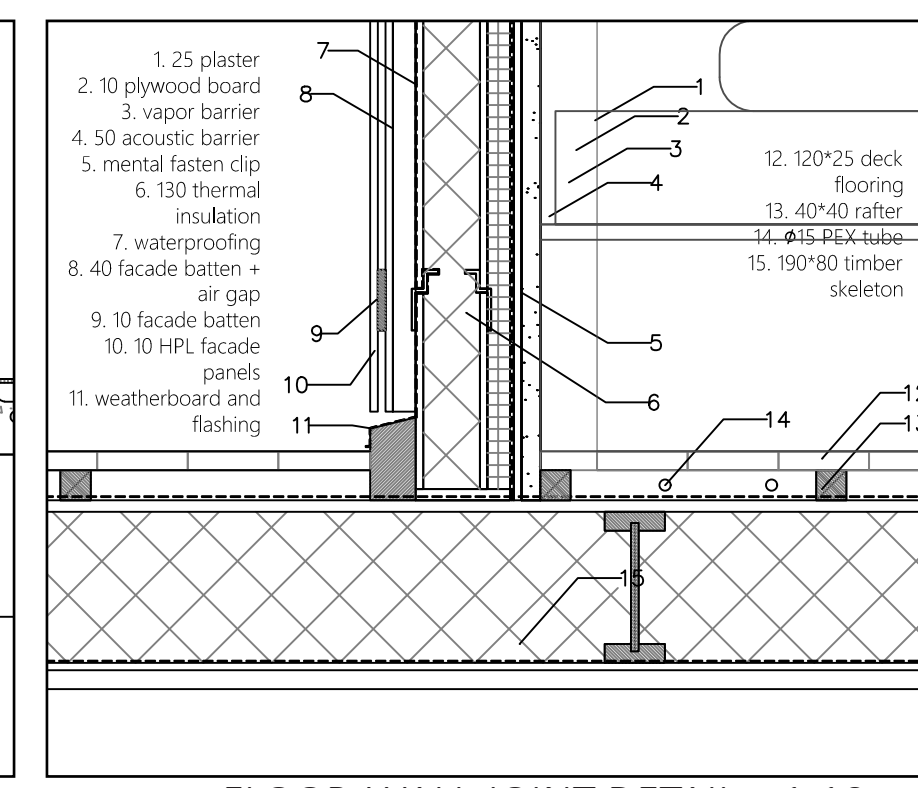
POLYCARBONATE SLIDING WINDOW &  
BAMBOO ROLLING SHUTTER  
FACADE FRAGMENT DETAIL 1:50



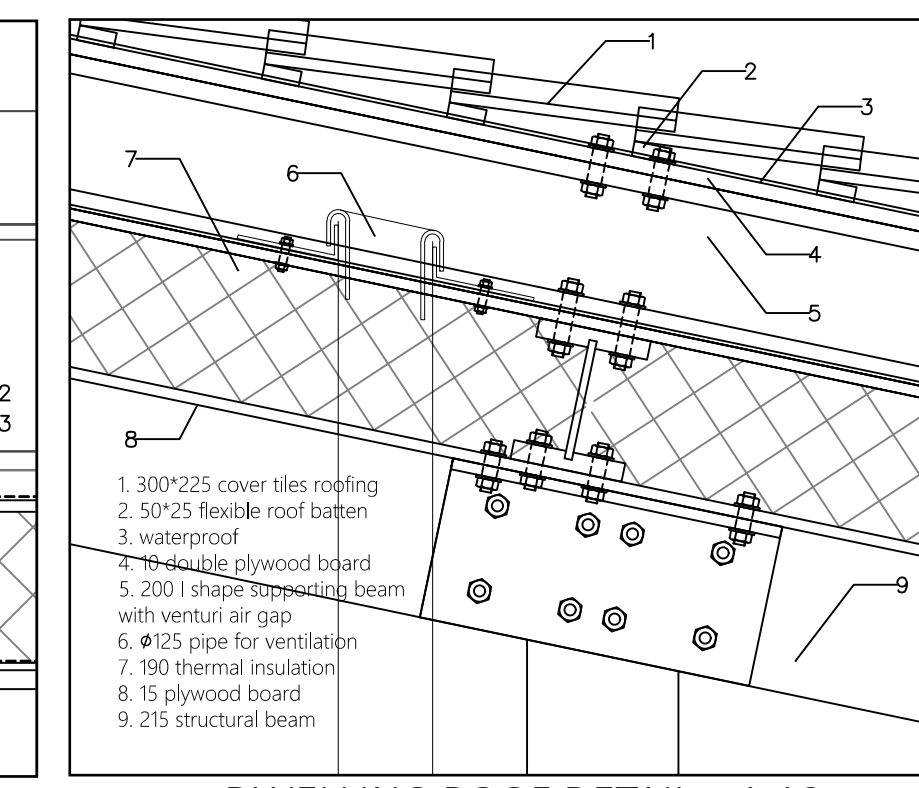
MUSEUM ROOF DETAIL 1:10



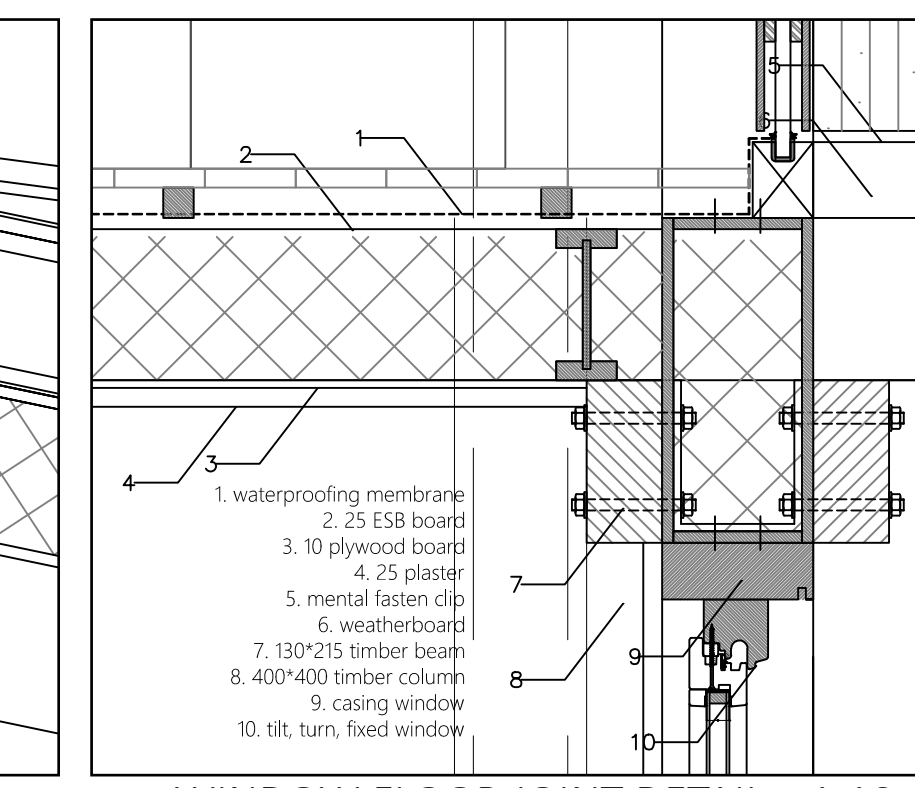
DOUBLE SKIN DETAIL 1:10



FLOOR-WALL JOINT DETAIL 1:10



DWELLING ROOF DETAIL 1:10



WINDOW FLOOR JOINT DETAIL 1:10

