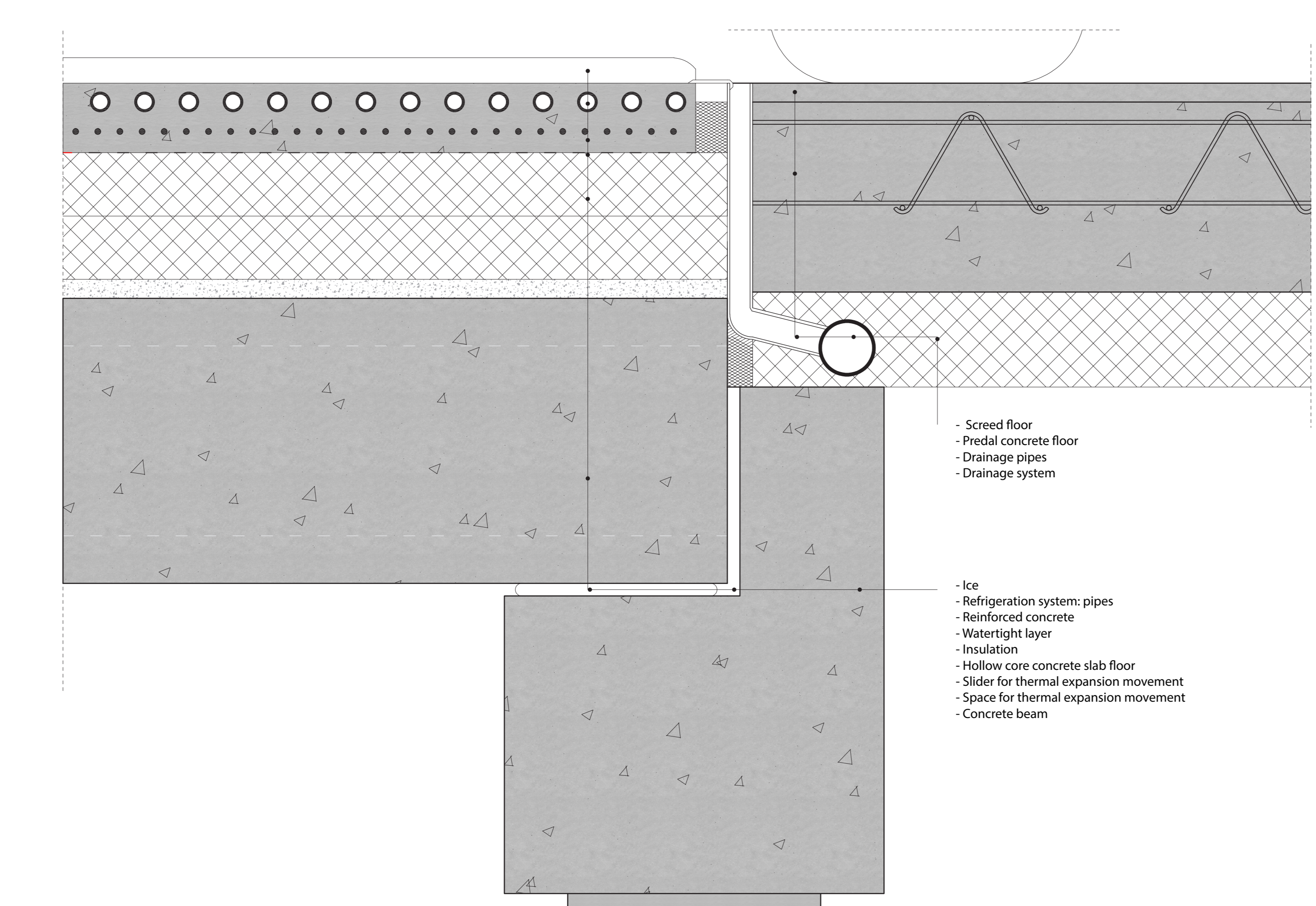
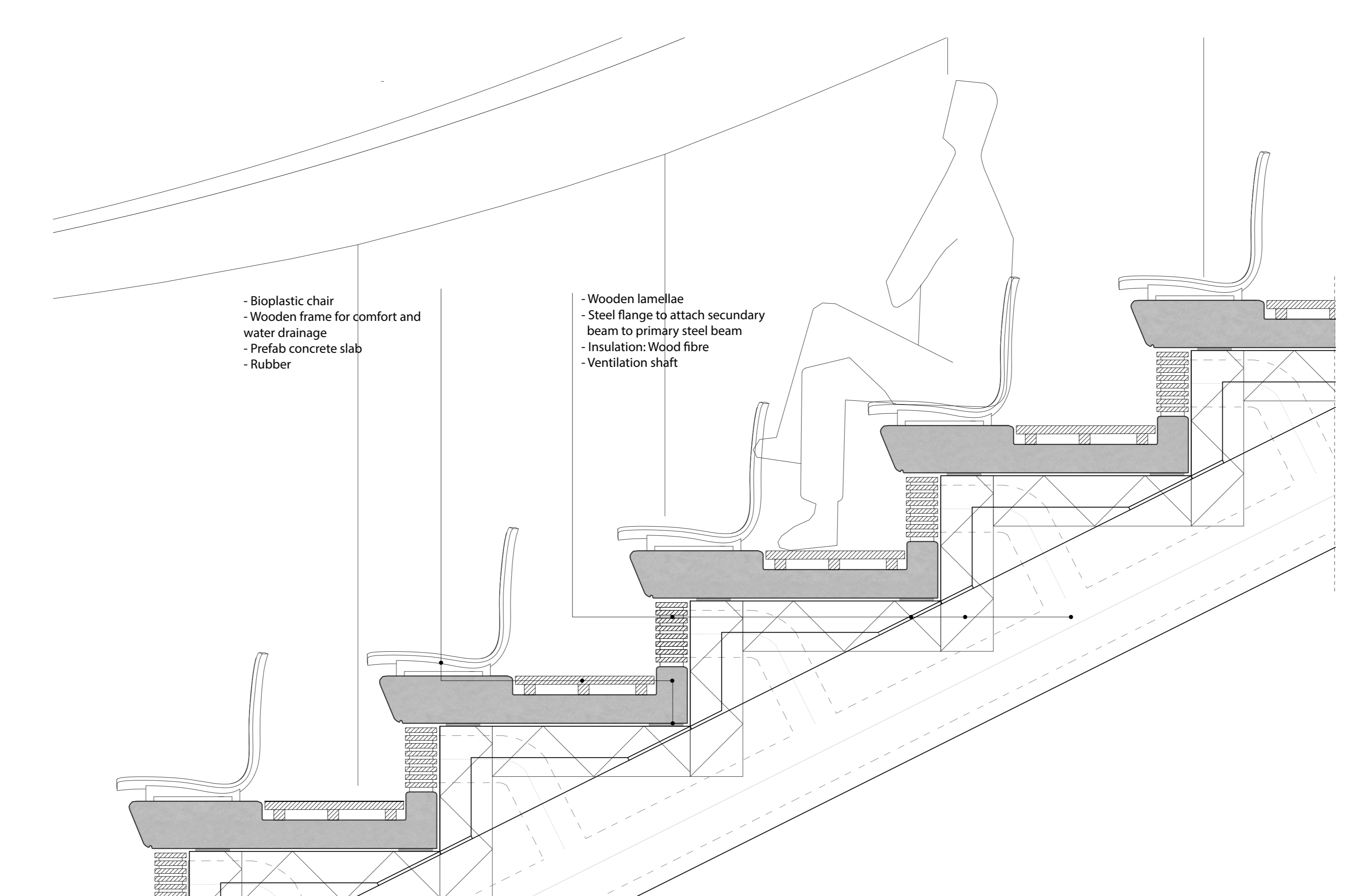


Detail 4: The tension rod meeting the circular steel beam, including a ventilation shaft, which is going to the airconditioning unit. 1:10

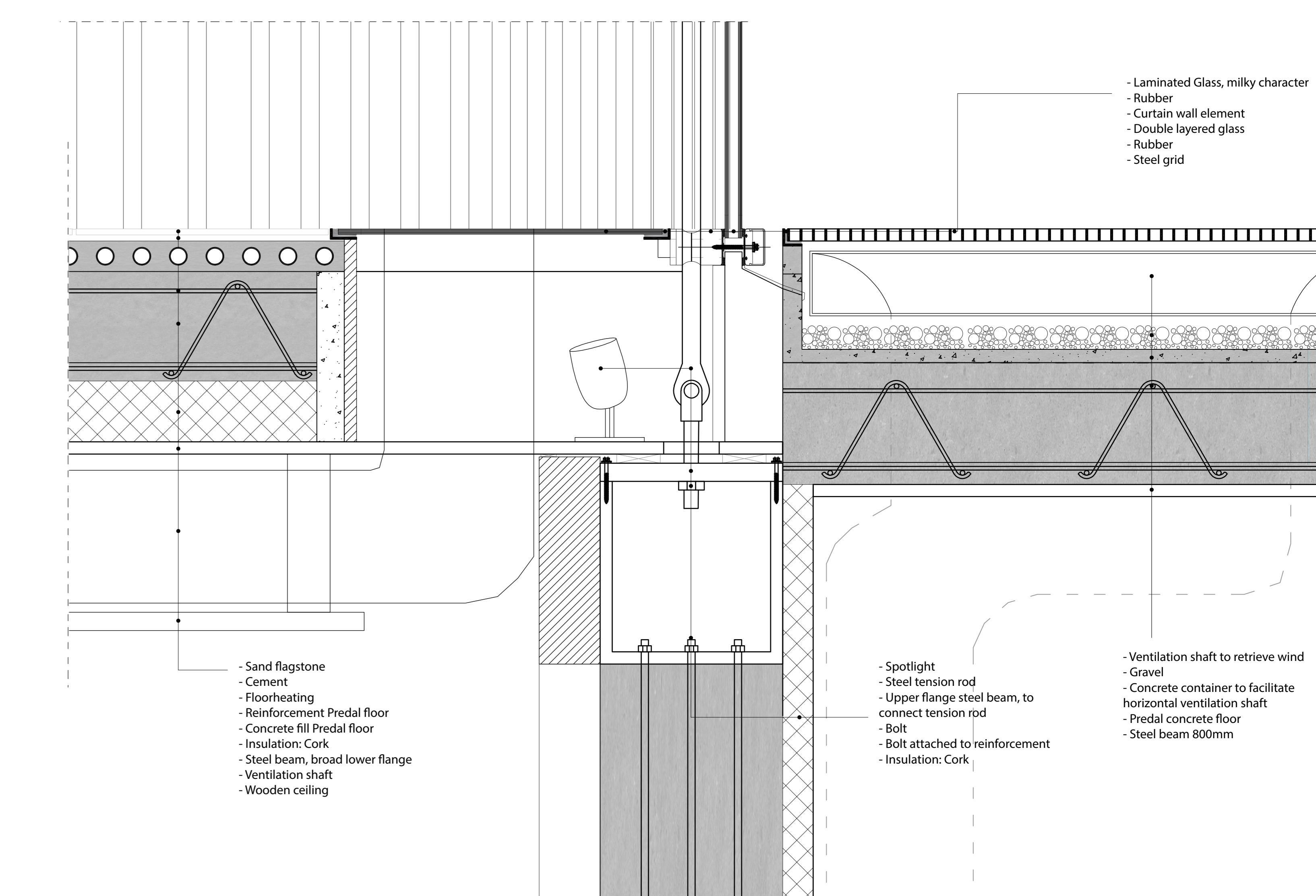
Section at middle of the 400 meter ice rink building. 1:50



Detail 1: The ice resting on a hollow concrete floor slab, meeting the generic flooring system. 1:5



Detail 2: The spectator stand including the ventilation pipes. 1:10



Detail 3: The inner floor meeting the attachment of the tension rod to the concrete column, the floor continues uninsulated to cover the parking garage underneath. 1:5