

## GlycA, a Biomarker of Low-Grade Inflammation, Is Increased in Male Night Shift Workers

Bizzarri, Daniele; Dollé, Martijn E. T. ; Loef, Bette ; van den Akker, E.B.; van Kerkhof, Linda W. M.

**DOI**

[10.3390/metabo12121172](https://doi.org/10.3390/metabo12121172)

**Publication date**

2022

**Document Version**

Final published version

**Published in**

Metabolites

**Citation (APA)**

Bizzarri, D., Dollé, M. E. T., Loef, B., van den Akker, E. B., & van Kerkhof, L. W. M. (2022). GlycA, a Biomarker of Low-Grade Inflammation, Is Increased in Male Night Shift Workers. *Metabolites*, 12(12), Article 1172. <https://doi.org/10.3390/metabo12121172>

**Important note**

To cite this publication, please use the final published version (if applicable). Please check the document version above.

**Copyright**

Other than for strictly personal use, it is not permitted to download, forward or distribute the text or part of it, without the consent of the author(s) and/or copyright holder(s), unless the work is under an open content license such as Creative Commons.

**Takedown policy**

Please contact us and provide details if you believe this document breaches copyrights. We will remove access to the work immediately and investigate your claim.

## Article

# GlycA, a Biomarker of Low-Grade Inflammation, Is Increased in Male Night Shift Workers

Daniele Bizzarri <sup>1</sup>, Martijn E. T. Dollé <sup>2</sup>, Bette Loef <sup>3</sup>, Erik B. van den Akker <sup>1,4</sup>  
and Linda W. M. van Kerkhof <sup>2,\*</sup>

<sup>1</sup> Biomedical Data Sciences, Leiden University Medical Center, 2333 ZC Leiden, The Netherlands

<sup>2</sup> Center for Health Protection, National Institute for Public Health and the Environment, 3720 BA Bilthoven, The Netherlands

<sup>3</sup> Center for Nutrition, Prevention and Health Services, National Institute for Public Health and the Environment, 3720 BA Bilthoven, The Netherlands

<sup>4</sup> Intelligent Systems, Pattern Recognition and Bioinformatics, Delft University of Technology, 2628 XE Delft, The Netherlands

\* Correspondence: linda.van.kerkhof@rivm.nl

**Abstract:** Sustained night shift work is associated with various adverse health risks, including an increased risk of cardiovascular disease, type II diabetes, and susceptibility to infectious respiratory diseases. The extent of these adverse health effects, however, seems to greatly vary between night shift workers, yet the underlying reasons and the mechanisms underlying these interindividual differences remain poorly understood. Metabolomics assays in the blood have recently gained much attention as a minimally invasive biomarker platform capturing information predictive of metabolic and cardiovascular diseases. In this cross-sectional study, we explored and compared the metabolic profiles of 1010 night shift workers and 1010 age- and sex-matched day workers (non-shift workers) from the Lifelines Cohort Study. The metabolic profiles were determined using the <sup>1</sup>H-NMR Nightingale platform for the quantification of 250 parameters of metabolism, including routine lipids, extensive lipoprotein subclasses, fatty acid composition, and various low-molecular metabolites, including amino acids, ketone bodies, and gluconeogenesis-related metabolites. Night shift workers had an increased BMI (26.6 vs. 25.9 kg/m<sup>2</sup>) compared with day workers (non-shift workers) in both sexes, were slightly more likely to be ever smokers (only in males) (54% vs. 46%), worked on average 5.9 ± 3.7 night shifts per month, and had been working in night shifts for 18.3 ± 10.5 years on average. We observed changes in several metabolic markers in male night shift workers compared with non-shift workers, but no changes were observed in women. In men, we observed higher levels of glycoprotein acetyls (GlycA), triglycerides, and fatty acids compared with non-shift workers. The changes were seen in the ratio of triglycerides and cholesterol(esters) to total lipids in different sizes of VLDL particles. Glycoprotein acetyls (GlycAs) are of particular interest as markers since they are known as biomarkers for low-grade chronic inflammation. When the analyses were adjusted for BMI, no significant associations were observed. Further studies are needed to better understand the relationship between night shift work and metabolic profiles, particularly with respect to the role of sex and BMI in this relationship.

**Keywords:** night shift work; circadian rhythms; metabolomics



**Citation:** Bizzarri, D.; Dollé, M.E.T.; Loef, B.; van den Akker, E.B.; van Kerkhof, L.W.M. GlycA, a Biomarker of Low-Grade Inflammation, Is Increased in Male Night Shift Workers. *Metabolites* **2022**, *12*, 1172. <https://doi.org/10.3390/metabo12121172>

Academic Editors: Eleonora Bruno, Lucia Castelli and Letizia Galasso

Received: 27 October 2022

Accepted: 16 November 2022

Published: 24 November 2022

**Publisher's Note:** MDPI stays neutral with regard to jurisdictional claims in published maps and institutional affiliations.



**Copyright:** © 2022 by the authors. Licensee MDPI, Basel, Switzerland. This article is an open access article distributed under the terms and conditions of the Creative Commons Attribution (CC BY) license (<https://creativecommons.org/licenses/by/4.0/>).

## 1. Introduction

Surveys in Europe estimate that approximately 19% of the workers in the European Union (EU) work during the night at least once per month [1]. Over the past decades, night shift work has been associated with multiple adverse health effects. These include, for example, an increased risk of cardiovascular diseases, diabetes, cancer, and greater respiratory infection susceptibility [2–7]. Furthermore, night shift work has been associated with cardiovascular mortality, breast-cancer mortality, and all-cause mortality [7–9].

Working during the night disturbs the circadian rhythms of many physiological processes in the human body [10,11]. A widely supported hypothesis is that the desynchronization of the internal circadian rhythms underlies the health effects associated with night shift work. For example, it is proposed that eating during the night alters glucose metabolism [12,13], and a single night of sleep deprivation results in the alteration of metabolites [14]. Despite the great advancements in our understanding of the biological clock over the past decades, the precise mechanisms underlying the health effects of night shift work are still incompletely understood. Metabolomics assays in the blood have recently gained much attention as a minimally invasive biomarker platform. It has been shown that levels of metabolites in the blood are driven by environmental and behavioral time cues (e.g., eating or sleeping), and they appear to be predictive of disease onset, in particular for diseases associated with night shift work [15,16].

Previously, we showed that characteristics of night shift work are associated with several risk factors for metabolic diseases, such as BMI [17]. However, association patterns with metabolites such as cholesterol and glucose were much less clear [17]. Therefore, in the current study, we further explored the metabolic profiles of 1010 night shift workers and 1010 age- and sex-matched non-shift workers who participated in the Lifelines Cohort Study. The metabolic profiles consisted of 250 metabolites that were measured by the Nightingale platform, including routine lipids, extensive lipoprotein subclasses, fatty acid composition, and various low-molecular metabolites, including amino acids, ketone bodies, and gluconeogenesis-related metabolites [16].

## 2. Material and Methods

### 2.1. Study Population and Design

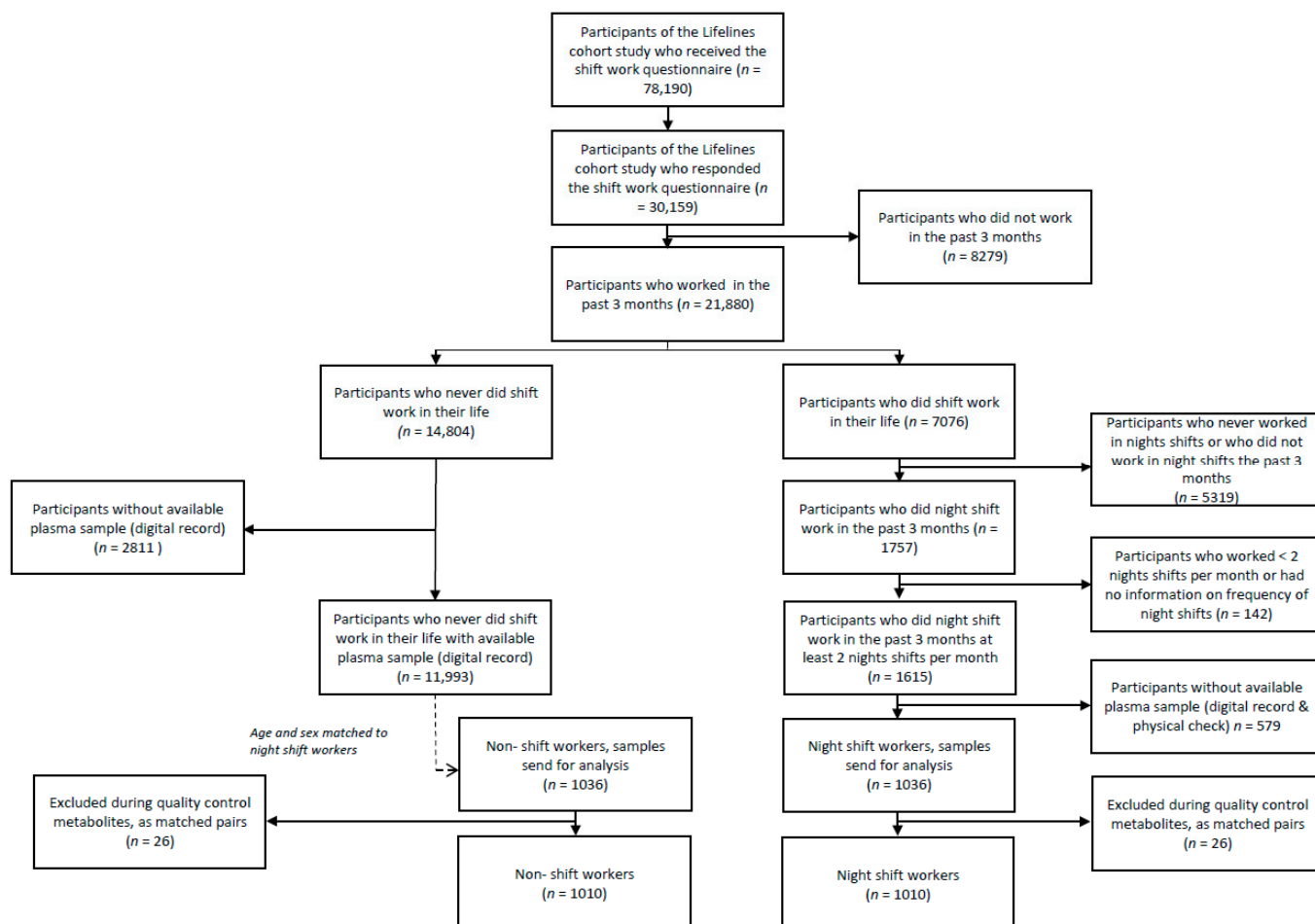
We used data from participants in the Lifelines Cohort Study. Lifelines is a multi-disciplinary prospective population-based cohort study with a unique three-generation design examining the health and health-related behaviors of 167,729 persons living in the north of the Netherlands. It employs a broad range of investigative procedures in assessing the biomedical, socio-demographic, behavioral, physical, and psychological factors that contribute to the health and diseases of the general population, with a special focus on multi-morbidity and complex genetics. The overall design and details of the methodology of the Lifelines cohort study can be found in previous papers [18–20].

Participants of the Lifelines Cohort study were recruited between 2007–2013 and were requested to visit one of the 12 Lifelines research facilities for a basic medical examination every 5 years. For the purpose of the current study, participants in the Lifelines cohort aged  $\geq 18$  years with valid email addresses ( $n = 78,190$ ) were approached in December 2017 and January 2018 for an additional questionnaire about their shift work history. Questions involved the participants' shift work histories (including early morning, evening, and night shifts) and work schedules during the three months before blood samples were drawn in the second assessment round (2014–2017). The Lifelines study has been approved by the Medical Ethics Committee of the University Medical Centre Groningen, the Netherlands (under number 2007/152). Written informed consent was obtained from all participants before entering the study [19].

### 2.2. Data and Sample Collection

In total, 30,159 individuals (38.6%) responded to the shift work questionnaire. The questionnaire on shift work was designed to cover the major characteristics of shift work: current shift work status, frequency of night shifts (on average per month), and duration of night shift work in years [21,22]. Workers ( $>12$  h per week) were defined as night shift workers if they worked at least 3 h between 00.00 and 05.00 [21], either in a rotating or permanent schedule. Non-shift workers were participants who never performed shift work (i.e., no early morning, evening, or night shifts) and had regular work times during the three months prior to the blood draw (starting work after 06.00 and finishing work before 21.00). Participants were only included if a plasma sample was available, and night shift

workers were included if they worked at least 2 nights per month during the three months before the blood draw. This resulted in the inclusion of 1036 night shift workers. Each night shift worker was randomly matched on the basis of sex and age with a non-shift worker ( $n = 1036$ ) from the group of 11,993 non-shift workers (Figure 1).



**Figure 1.** Flowchart of inclusion and exclusion of study population.

As requested, 98% of the participants fasted overnight before the blood draw between 08.00 and 10.00 at one of the Lifelines research facilities (self-reported). Plasma samples were stored by Lifelines Biobank at  $-80^{\circ}\text{C}$ .

### 2.3. Covariates

Data on age (in years), sex (male/female), smoking (current/former/never), and BMI ( $\text{kg}/\text{m}^2$ ) were obtained from the Lifelines Cohort database (second assessment round (2014–2017)). These covariates were included because they are known to be associated with night shift work and/or metabolite levels [17,23–27]. Age, sex, and smoking were self-reported. BMI was calculated on the basis of weight and height measurements during the second assessment round. Weight and height measurements were taken in light clothing without shoes. Body weight was measured to the nearest 0.1 kg. Height was measured to the nearest 0.5 cm.

### 2.4. Metabolomics Measurements

The 2072 included samples were sent to Nightingale Health Plc for high-throughput NMR spectroscopy in 2020. This analysis provided simultaneous quantification of 250 metabolic biomarkers measures in a single assay and included lipids, lipoproteins, fatty acid compo-

sition, various low-molecular-weight amino acids, and their derived measures (e.g., ratios). For more details see Blood Biomarker Analysis ([nightingalehealth.com](https://nightingalehealth.com)) (accessed on 18 November 2022). Measurements of the metabolic markers were conducted blinded.

### 2.5. Statistical Methods

**Preprocessing:** Following Nightingale Health indications, we excluded 20 contaminated samples (18 tagged with “high ethanol” and 2 with “high lactate”), together with their respective matched sample (day/night worker). We also decided to exclude 12 samples (6 day and 6 night workers) with >5 missing or zero values for metabolite levels. The remaining 419 missing values (0.083% of the dataset) were imputed using the function `nipals` of the R package `pcaMethods` [28]. Finally, the metabolic features were normalized using z-scaling after applying a natural logarithmic transformation (see Supplementary Figure S6 for their distributions). To avoid problems with log transformation, a value of 1 was added to all biomarkers containing zeroes (glycine and beta-hydroxybutyrate), indicating a value below the detection limit, as previously carried out by other studies [29,30]. **Principal Component Analysis (PCA):** As a preliminary analysis to identify the sources of greatest variance in the metabolomics dataset, we performed the PCA (with the function `prcomp` in R). To evaluate which covariates had the greatest influence on the metabolomics dataset, we studied the correlation between the first 15 principal components (~90% of the variance) and the covariates. **Covariates:** Differences in age, smoking, BMI, and night shift work characteristics between night shift workers and non-shift workers were tested with the Mann-Whitney U test, t-test, or Pearson Chi-square test. **Metabolome-wide association studies (MetaboWAS):** Linear regression models on the metabolomics quantifications, adjusted for potential confounders (based on the results of the previous section), were used to study the associations between each metabolite and night shift work status. The false discovery rate (FDR) was applied to account for multiple testing. **Multi-biomarker scores:** Recently, several multi-biomarker scores based on metabolomics data have been developed that are predictive of long-term health outcomes [29,31]. The coefficients indicated by Deelen et al. were used to obtain the MetaboHealth score, whose name was given later to the score in the Deelen et al. paper. We also calculated the [29] MetaboAge scores, as previously described den Akker et al., with an updated version that takes into account the changes in the Nightingale platform, which were made in 2020 [31]. The MetaboAge score was trained on a large set of cohorts with Nightingale Metabolomics data on the basis of chronological age; the MetaboHealth score was also trained on a large set of cohorts on the basis of mortality data. Both scores were constructed to generate indicators of biological age. We used t-tests to compare the MetaboHealth score and MetaboAge score between night shift workers and non-shift workers in men and women separately.

## 3. Results

### 3.1. Description of the Study Population and Dataset

The final dataset after quality control (see methods section) consisted of 938 women ( $n = 469$  non-shift workers and  $n = 469$  night shift workers) and 1082 men ( $n = 541$  non-shift workers and  $n = 541$  night shift workers). Women were, on average, 45.0 years old, and men were, on average, 47.7 years old (Table 1). In both women and men, night shift workers had an increased BMI (Table 1). Among men, slightly more non-shift workers were never smokers (54%) compared with night shift workers (46%). Night shift workers worked an average of  $5.9 \pm 3.7$  night shifts per month, with men working slightly more night shifts per month on average compared with women ( $6.8 \pm 3.8$  and  $5.9 \pm 3.7$ , respectively;  $p < 0.001$ ). Night shift workers had been working night shifts for 18.3 years on average, with men working night shifts slightly longer than women ( $18.9 \pm 10.7$  vs.  $17.6 \pm 10.1$  years;  $p = 0.046$ ). There were no differences in the percentages of participants with diabetes mellitus type 2, hypertension, or high cholesterol in any of the groups (Supplemental Table S1).

**Table 1.** Characteristics of the study population.

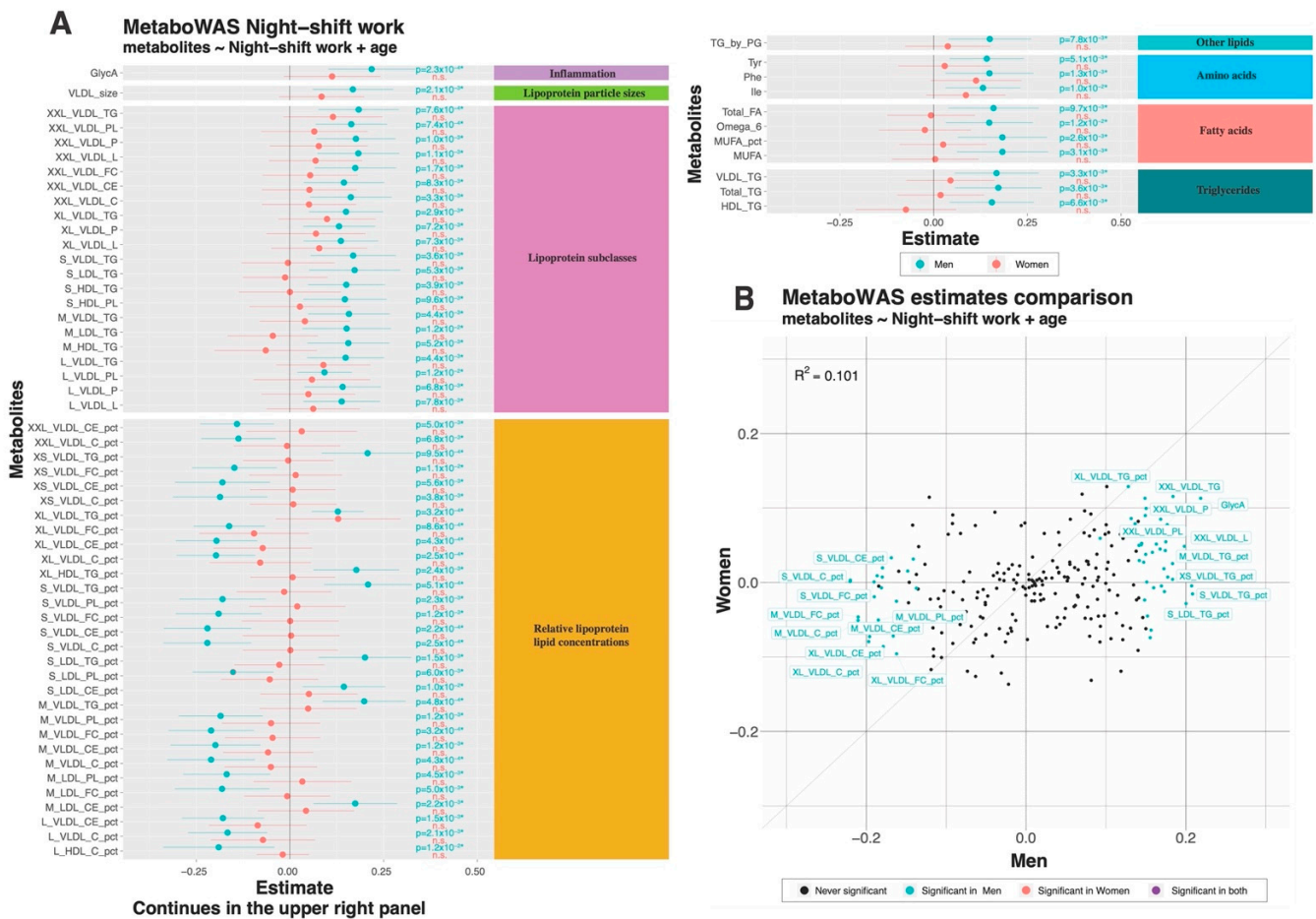
Study Population (n = 2020)	Non-Shift Workers (n = 1010)	Night Shift Workers (n = 1010)
Age (in years, mean (SD))	46.4 (8.5)	46.4 (8.5)
Sex (% male)	53.6	53.6
BMI (in kg/M <sup>2</sup> , mean (SD))	25.9 (4.0)	26.6 (4.4) *
Smoking (current/former/never, %) (n = 1922)		
Frequency of night shifts/month (mean, SD)	n.a.	5.9 (3.7)
Duration of night shifts in years (mean, SD)	n.a.	18.3 (10.5)
<b>Men (n = 1082)</b>	<b>Non-shift workers (n = 541)</b>	<b>Night shift workers (n = 541)</b>
Age (in years, mean (SD))	47.7 (8.1)	47.7 (8.1)
BMI (in kg/M <sup>2</sup> , mean (SD))	26.1 (3.6)	26.9 (3.9) *
Smoking (current/former/never, %) (n = 1030)	19/27/54%	21/34/46% *
Frequency of night shifts/ month (mean, SD)	n.a.	6.8 (3.8)
Duration of night shifts in years (mean, SD)	n.a.	18.9 (10.7)
<b>Women (n = 938)</b>	<b>Non-shift workers (n = 469)</b>	<b>Night shift workers (n = 469)</b>
Age (in years, mean (SD))	45.0 (8.8)	45.0 (8.8)
BMI (in kg/M <sup>2</sup> , mean (SD))	25.5 (4.4)	26.2 (4.8) *
Smoking (current/former/never, %) (n = 892)	11/28/61%	15/32/55%
Frequency of night shifts/ month (mean, SD)	n.a.	4.8 (3.1)
Duration of night shifts in years (mean, SD)	n.a.	17.6 (10.1)

\*  $p < 0.05$ , Mann-Whitney U test or Pearson Chi-square test. SD = standard deviation; n.a. = not applicable.

### 3.2. Associations between Metabolite Markers and Night Shift Work

A principal component analysis (PCA) showed that most of the variance in the metabolomics dataset could be attributed to sex differences (Supplementary Figure S1). While a clear separation was visible for sex (Supplemental Figure S1D), no clear separation could be made on the basis of night shift work exposure (Supplemental Figure S1C). Concomitantly, association analyses were conducted using sex-stratified analyses. For the results of the non-stratified analyses, see Supplementary Figure S5. Linear regression analyses adjusted for age showed that in male night shift workers, 64 out of 250 metabolites were significantly associated with night shift work (either positively or negatively, Figure 2A). By contrast, none of the 250 metabolites were significantly associated with night shift work in women. Figure 2B shows the effect estimates of all metabolite markers significantly associated with night shift work and visualizes these different results for men and women.

In men, positive associations were observed in eight different subgroups of metabolites (as determined by Nightingale Health), ranging from an inflammation marker to triglycerides. Negative associations were only observed in a single group, yet this was the largest group: 'relative lipoprotein lipid concentrations' (Figure 2A). The markers positively associated with the largest effect sizes in male night shift workers included 'glycoprotein acetyls' (GlycA, estimate~0.219,  $p \sim 2.3 \times 10^{-4}$ ) and 'triglycerides to total lipids ratio in small VLDL' (S\_VLDL\_TG\_pct, estimate~0.208,  $p \sim 5.1 \times 10^{-4}$ ). The largest negative effect sizes in male night shift workers included 'cholesteryl esters to total lipids ratio in small VLDL' (S\_VLDL\_CE\_pct, estimate~-0.22,  $p \sim 2.2 \times 10^{-4}$ ) and 'cholesterol to total lipids ratio in small VLDL' (S\_VLDL\_C\_pct, estimate~-0.219,  $p \sim 2.5 \times 10^{-4}$ ) (Figures 2 and S2).



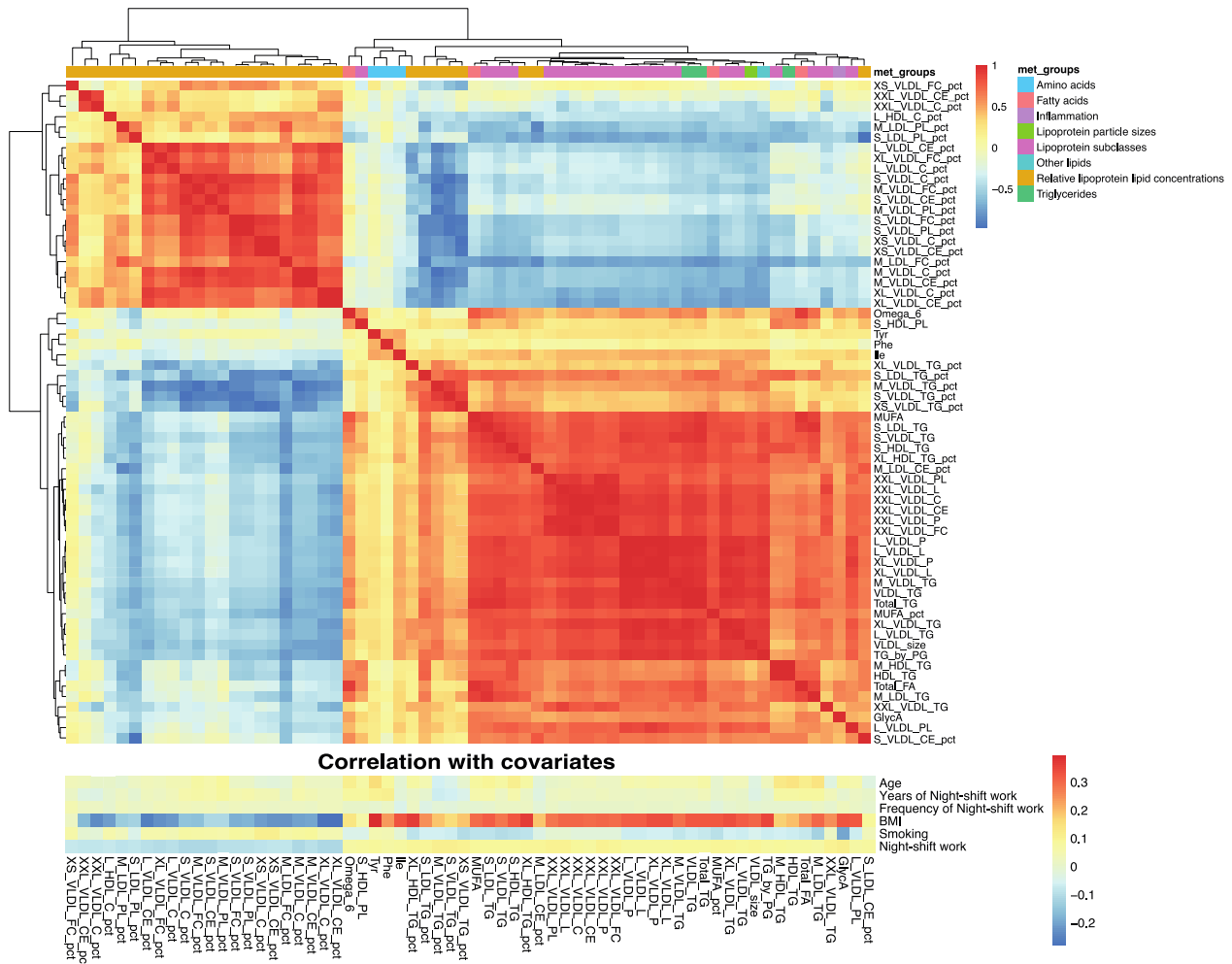
**Figure 2.** Univariate associations between metabolites (or metabolite ratios) and night shift work, significant in men. **(A):** In men (blue), positive associations were observed between several types of metabolites ranging from inflammation to triglycerides. Negative associations were observed in relative lipoprotein concentrations. In women (pink), no significant associations were observed after Benjamini Hochberg correction. \* indicates significant associations and n.s stands for non significant. **(B):** Scatterplot comparing the effect estimates in all metabolites in the Nightingale platform in men (on the x-axis) and women (on the y-axis). Highlighted in blue and tagged are the metabolites significantly associated in men. No metabolite was associated with night shift work in women; therefore, no points are colored red or purple. The analyses are adjusted for age.

The group of ‘lipoprotein subclasses’ and ‘relative lipoprotein lipid concentrations’ included a large set of makers related to different sizes of VLDL particles. In particular, markers indicative of the ratio of triglycerides and cholesterol(esters) to total lipids in different sizes of VLDL particles were associated with night shift work in men. The total levels of triglycerides (Total\_TG, estimate~0.17,  $p\sim 3.6 \times 10^{-3}$ ) and fatty acids (Total\_FA, estimate~0.16,  $p\sim 9.7 \times 10^{-3}$ ) were also significantly increased in male night shift workers (Figure 2A). The pairwise correlation analyses of all significant markers in men indicated several subgroups of markers with higher positive or negative correlations (Figure 3). The markers within the group of ‘relative lipoprotein lipid concentration’ clustered together, which was not surprising considering that these were strongly related markers. Similar patterns of correlations were also observed with several of the covariates, with BMI being the most relevant in the male dataset (Figure 3), which suggests that the observed associations between metabolite levels and night shift work in males are related to differences in BMI. Indeed, when BMI was included as a confounder in the univariate linear regressions, none of the metabolite markers were significantly associated with night shift work (Supplemental Figure S2). When smoking was included in the model, ~50% of the metabolite markers that

were significantly associated in the crude model no longer reach the significance threshold (Supplemental Figure S2).

### Correlations of the significantly associated metabolites in Men

Correlation between metabolites



**Figure 3.** Correlations of the metabolite markers in males that were significantly associated with night shift work, including correlation with covariates.

#### 3.3. Multi-Biomarker Scores

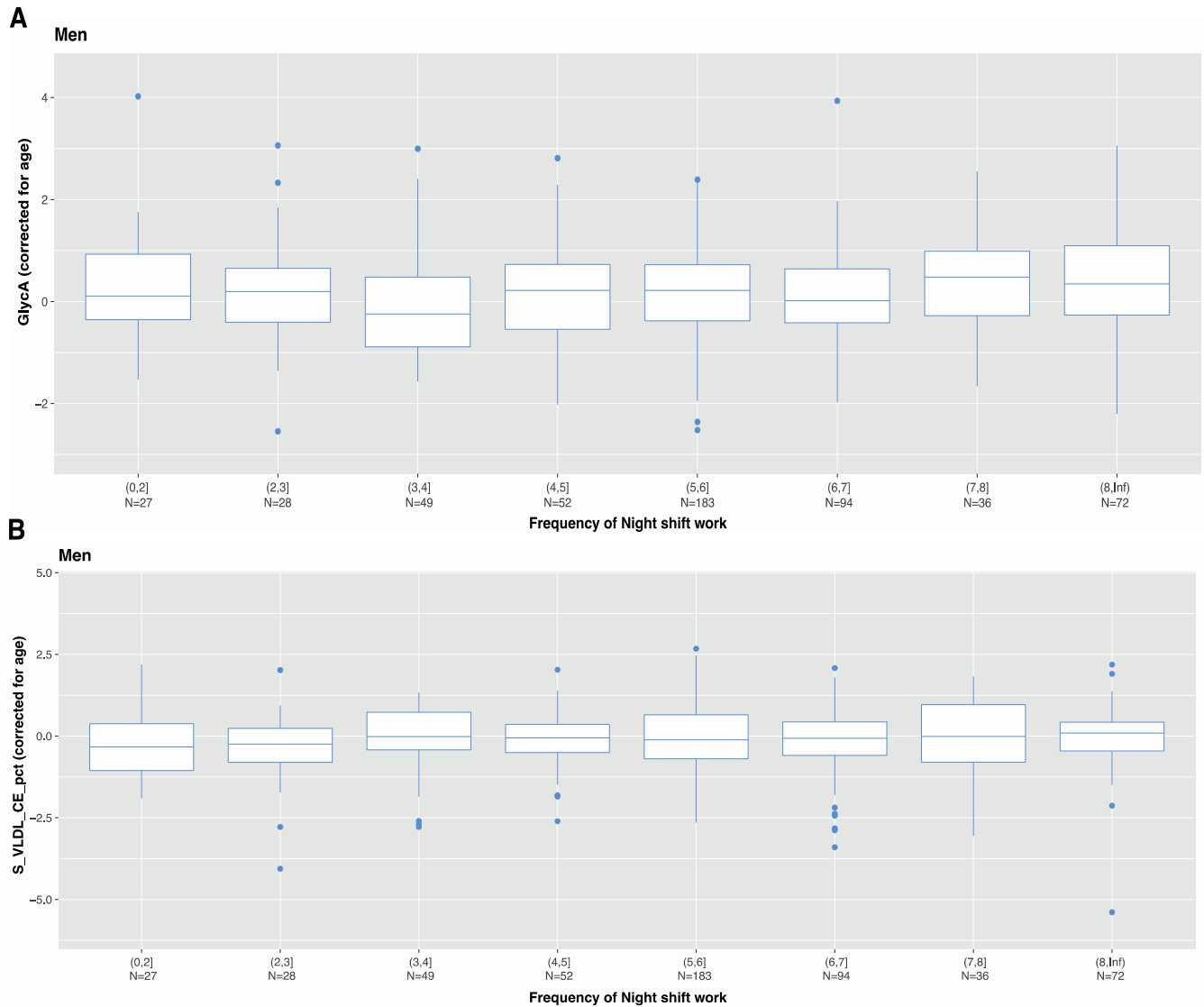
Recently, several multi-biomarker scores based on metabolomics data have been developed to generate indicators of biological age and are predictive of long-term cardio-metabolic health outcomes [29,31]. Some of the markers associating with night shift work (in men), such as GlycA, are part of these multi-biomarker scores. However, in our study, no association of night shift work with the MetaboHealth score or MetaboAge was observed (Supplemental Figure S3).

#### 3.4. Characteristics of Night Shift Work

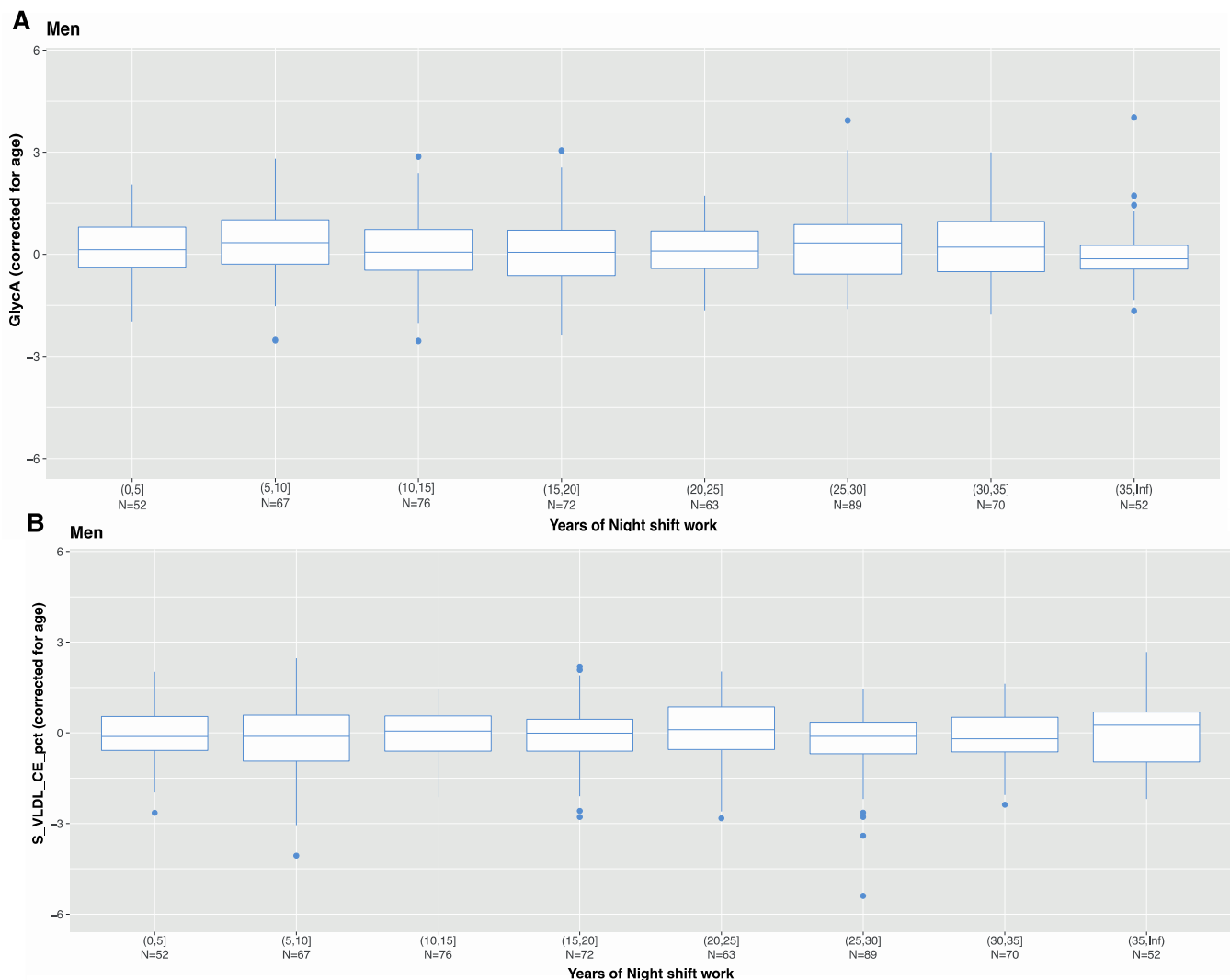
Previously, we showed that characteristics of night shift work, such as frequency and duration, were associated with metabolic risk factors, such as BMI [17]. Therefore, we investigated the levels of GlycA and S\_VLDL\_CE\_pct among night shift workers on the basis of frequency (average number of night shifts per month) and duration (number of years engaged in night shift work). GlycA and S\_VLDL\_CE\_pct were the two markers with the largest effect estimates for a positive and negative association, respectively. Furthermore, they might represent different signals, as they are not highly correlated positively or



negatively (Figure 3). Nevertheless, we observed no differences in GlycA or S\_VLDL\_CE levels among male night shift workers related to the frequency of night shift work (Figure 4) or the duration of night shift work (Figure 5).



**Figure 4.** Residuals of (A) GlycA and (B) S\_VLDL\_CE\_pct after correcting for age among male night shift workers based on average frequency of night shift per month:  $\leq 2$  night shifts per month,  $>2-\leq 3$  nights shifts per month,  $>3-\leq 4$  nights shifts per month,  $>4-\leq 5$  nights shifts per month,  $>5-\leq 6$  nights shifts per month,  $>6-\leq 7$  nights shifts per month,  $>7-\leq 8$  nights shifts per month, and  $>8$  nights shifts per month.



**Figure 5.** Residuals of (A) GlycA and (B) S\_VLDL\_CE\_pct, after correcting for age among male night shift workers based on years of night shift:  $\leq 5$  years of night shifts,  $>5\text{--}\leq 10$  years of nights shifts per month,  $>10\text{--}\leq 15$  years of nights shifts,  $>15\text{--}\leq 20$  years of nights shifts,  $>20\text{--}\leq 25$  years of nights shifts,  $>25\text{--}\leq 30$  years of nights shifts,  $>30\text{--}\leq 35$  years of nights shifts, and  $>35$  years of nights shifts.

#### 4. Discussion

In the current cross-sectional study, we explored the metabolic profiles of 1010 night shift workers and 1010 age- and sex-matched non-shift workers from the Lifelines Cohort Study. Both sexes had differences in BMI associated with night work, and we observed changes in several metabolic markers in male night shift workers but not in women. In men, we observed an increase in the levels of glycoprotein acetyls (GlycA), triglycerides, and fatty acids. The changes in triglycerides were mainly related to the ratio of triglycerides and cholesterol(esters) to total lipids in different sizes of VLDL particles. Since correction for BMI decreased the effect in men, we conclude that the increased BMI associated with night work coincides with differences in metabolomic parameters only in men, especially as an indicator of low-grade inflammation (Glyc A).

To our knowledge, this is the first time GlycA has been investigated in night shift workers. GlycA is a nuclear magnetic resonance (NMR)-derived signal that originates from a subset of glycan *N*-acetylglucosamine residues on enzymatically glycosylated acute-phase proteins (predominantly alpha-1-acid glycoprotein, haptoglobin, and alpha-1-antitrypsin) [32,33]. In the past few years, studies have investigated GlycA as a biomarker for chronic systemic inflammation. Higher levels of GlycA have been linked to both type 2

diabetes and cardiovascular disease risks in several cohort studies [33–36] as well as to a higher risk of severe infections [37]. Considering the known association of night shift work with diabetes type 2, cardiovascular diseases, and infection susceptibility [6], our finding that GlycA was increased in male night shift workers is of particular interest.

In addition to changes in GlycA, we observed increases in several metabolic markers related to the ratio of triglycerides and cholesterol(esters) to total lipids in different sizes of VLDL particles as well as an increase in total triglycerides. These results are in line with those of a recent large meta-analysis: ‘night shift work was associated with increased levels of triglycerides based on 48 previously published studies’. Importantly, no differences between men and women were reported in this meta-analysis, as the authors noted that women were generally underrepresented in the included studies, and therefore, sex-stratified analyses could not be performed [38]. By contrast, the current study was sex-balanced and able to recover the previously reported association between night shift work and increased levels of triglycerides, yet only in men. This suggests that biomarker risk profiles trained in men might be of limited utility when applied to females, as is the case with more established cardio-metabolic risk factors. It also potentially points to a difference in the molecular mechanisms that underlie the adverse health associations of night shift work in males and females.

Our study indicated differences in the metabolic profiles of men and women, with no significant differences between night-shift workers and non-shift workers observed in women. When we applied sex stratification to our previously published dataset [17], we also observed sex differences. For example, triglycerides and the number of leukocytes were increased only in male night shift workers compared with non-shift workers (data not published). Previous studies have shown that one-third of 507 metabolic markers differed between men and women [23,25] and that age- and diet-related changes in the metabolome differed between men and women [23,39]. Furthermore, it is known that the link between obesity and the risk of cardiovascular disease differs between men and women [Palmer, 2015 #64]. It has been hypothesized that, for example, differences in fat distribution could underlie the sexual dimorphism observed in cardiovascular disease risk factors. In premenopausal women, fat accumulates more in subcutaneous depots, while men tend to have more visceral fat. This distribution changes in women after menopause and is linked to hormonal changes [Palmer, 2015 #64]. Levels of metabolites in women are also influenced by their menstrual cycles [23]. Unfortunately, in our study, the phase of the menstrual cycle or menopause stage at the time of the blood draw was unknown and could not be taken into account. It could be that the relationship between night shift work, metabolites, and BMI changes in women after menopause and explains the differences observed in our study between men and women. These results emphasize the importance of including sex-stratified analysis in future studies, as well as information regarding the menstrual cycle and menopause stages in women.

To our knowledge, this is one of the first studies investigating blood metabolomic profiles with 250 metabolic markers in night shift workers. We are aware of one previous study in which metabolomic analysis was performed in a small group of female night shift workers ( $n = 15$ ) and age- and BMI-matched female non-shift workers ( $n = 15$ ) [40]. The authors reported 76 metabolites that were significantly changed in night shift workers, including L-tryptophan, acylcarnitines, and several fatty acids. One other study investigated metabolites in night shift workers but performed analyses on urine samples [41]. One marker was consistently changed in this study: acylcarnitine C10:2. Due to the lack of standardization and the difference in coverage, it is difficult to compare metabolite datasets across studies using different detection methods [42]. Therefore, it is difficult to directly compare the results of these two studies to our own.

In our study, BMI was increased in both male and female night shift workers, and levels of GlycA were correlated with BMI in both males (Figure 3) and females (Supplemental Figure S4). However, a significant association of night shift work with increased GlycA was only observed in males. It is hypothesized that GlycA, a marker for chronic

inflammation, may coincide with obesity, and weight loss after bariatric surgery is related to a decrease in GlycA levels [43]. However, GlycA also predicts cardiovascular disease risks irrespective of BMI [35]. As GlycA was relatively recently identified as a biomarker; the causality of relationships is still largely unknown. Increases in GlycA could, for example, be secondary to changes in BMI or related to different eating patterns in night shift workers. For example, a study in healthy individuals showed large variability in the daytime postprandial response of GlycA [Mazidi, 2021 #65]. Previous studies have shown that a reduction in elevated GlycA is feasible by different interventions, such as exercise, bariatric surgery, and dietary interventions, including gut microbiome changes [Barber, 2018 #67; Manmadhan, 2019 #40; Vijay, 2021 #68]. Most of these interventions also resulted in weight loss, replicating the association with body weight (BMI) we found in our analysis. Nevertheless, the intervention studies suggest GlycA can be reduced in night shift workers as well. Further studies are needed to gain more insight into the complex relationship between night shift work, BMI, sex differences, and changes in GlycA.

In our study, we observed no association of frequency and duration of night shift work with the top two markers in men (GlycA and S\_VLDL\_CE). This is somewhat in line with our previous study, which indicated that characteristics of night shift work (such as the number of night shifts per month) are not clearly associated with metabolites, such as cholesterol and glucose [17]. One explanation previously suggested for the absence of a dose-response effect in night-shift workers is the healthy worker effect [44–46]. This refers to the notion that workers who are able to work many night shifts/month or for more years represent a relatively healthy group. In addition, a disadvantage of the frequency and duration measures used in the current study is that they do not take into account other important aspects of the shift schedule, such as the number of consecutive night shifts and the number of rotations between day and night shifts. These are known to also be important aspects of night-shift work [22]. For example, a previous meta-analysis indicated that permanent night shifts were associated with dyslipidemia, mainly via elevated total cholesterol and triglycerides, and reduced HDL-cholesterol in night shift workers [38].

One important limitation of our current study is that we do not have information on whether night shift workers worked night shifts during the days directly prior to the blood draw. For instance, previous studies have shown that the rhythmicity of metabolites is altered during or directly after simulated night shifts [24]. Kervezee et al. showed that in nine healthy subjects (eight men and one woman), four days of simulated night shifts affect the rhythmicity and acrophase of several metabolites [47]. It was also noted that the response to the simulated night shifts was highly diverse among individuals, with phase shifts of rhythmic metabolite profiles ranging from a 0.2-h advance in one subject to a 12-h delay in another subject [47]. While population studies, including ours, generally cannot collect data in such great detail as these rhythmicity studies, they do have the advantage of considerably larger sample sizes that allow for the robust identification of night shift work being associated with metabolites with smaller effect sizes. Further studies could include a question on working night shifts during the week prior to the blood draw to further take into account any effect of night shifts on the diurnal patterns of metabolites.

To summarize, we observed changes in several metabolic markers in male night shift workers but not in women, despite the increased BMI in both female and male night shift workers. In male night shift workers, we observed that BMI was associated with higher levels of GlycA, triglycerides, and fatty acids markers compared with non-night shift workers. Further studies are needed to better understand the relationship between night shift work and these metabolic markers, with respect to the role of sex, BMI, and characteristics of night shift work in this relationship.

**Supplementary Materials:** The following supporting information can be downloaded at: <https://www.mdpi.com/article/10.3390/metabo12121172/s1>, Figure S1: Principal component analysis (PCA) of metabolite markers; Figure S2: Volcano plots of the association between individual metabolites and night shift work in males; Figure S3: Boxplot of mean MetaboHealth score and  $\Delta$ MetaboAge score; Figure S4: Correlations of the metabolite markers, significantly associated with night shift work

in men, with covariates in women; Figure S5: Univariate associations between metabolites (or metabolites ratios) and night shift work, significant in men; Figure S6: Histograms of the metabolomics features after log transformation and z-scaling; and Table S1: Disease information of the study population including stratification for sex.

**Author Contributions:** Conceptualization, M.E.T.D., E.B.v.d.A. and L.W.M.v.K.; Formal analysis, D.B., B.L. and L.W.M.v.K.; Funding acquisition, M.E.T.D., E.B.v.d.A. and L.W.M.v.K.; Methodology, B.L.; Supervision, E.B.v.d.A.; Visualization, D.B.; Writing—original draft, D.B. and L.W.M.v.K.; Writing—review and editing, D.B., B.L., M.E.T.D., E.B.v.d.A. and L.W.M.v.K. All authors have read and agreed to the published version of the manuscript.

**Funding:** This study was funded by the Dutch Ministry of Social Affairs and Employment (KV11.16) and through Bioclock, a project within the NWA-ORC program of the Dutch Research Council (project number 1292.19.077). D.B. was funded by VOILA (ZonMW 457001001) and Medical Delta (scientific program METABODELTA: Metabolomics for clinical advances in the Medical Delta), and E.v.d.A. was funded by a personal grant of the Dutch Research Council (NWO; VENI: 09150161810095). The funding bodies had no role in the study design; the collection, analysis, and interpretation of data; the writing of the manuscript; or the decision to submit the manuscript for publication.

**Institutional Review Board Statement:** The study was conducted according to the guidelines of the Declaration of Helsinki, and approval of the Lifelines Cohort study was obtained from the Medical Ethics Committee of the University Medical Center Groningen, the Netherlands (under number 2017/152).

**Informed Consent Statement:** Written informed consent was obtained from all participants before entering the study [19].

**Data Availability Statement:** Third Party Data: Restrictions apply to the availability of these data. Data used in this study were obtained from the Lifelines Cohort Study and can be requested via [www.lifelines.nl/researcher](http://www.lifelines.nl/researcher) (accessed from 1 June 2021 until 1 November 2022). Data are available upon request according to their permissions for use. Please see [www.lifelines.nl/researcher](http://www.lifelines.nl/researcher) (accessed on 1 June 2021).

**Acknowledgments:** The authors wish to acknowledge the services of the Lifelines Cohort Study, the contributing research centers delivering data to Lifelines, and all the study participants. The Lifelines initiative has been made possible by a subsidy from the Dutch Ministry of Health, Welfare, and Sport; the Dutch Ministry of Economic Affairs; the University Medical Center Groningen (UMCG); Groningen University; and the provinces in the north of the Netherlands (Drenthe, Friesland, and Groningen).

**Conflicts of Interest:** The authors declare no conflict of interest.

## References

1. Eurofound. European Working Conditions Survey. 2015. Available online: <https://www.eurofound.europa.eu/data/european-working-conditions-survey> (accessed on 7 January 2021).
2. IARC Working Group. Carcinogenicity of night shift work. *Lancet Oncol.* **2019**, *20*, 1058–1059. [CrossRef] [PubMed]
3. Torquati, L.; Mielke, G.I.; Brown, W.J.; Kolbe-Alexander, T. Shift work and the risk of cardiovascular disease. A systematic review and meta-analysis including dose-response relationship. *Scand. J. Work Environ. Health* **2018**, *44*, 229–238. [CrossRef] [PubMed]
4. Wang, X.-S.; Armstrong, M.; Cairns, B.; Key, T.J.; Travis, R.C. Shift work and chronic disease: The epidemiological evidence. *Occup. Med.* **2011**, *61*, 78–89. [CrossRef] [PubMed]
5. Wu, Q.-J.; Sun, M.H.; Wen, M.Z.-Y.; Zhang, M.M.; Wang, M.H.-Y.; He, M.X.-H.; Jiang, M.Y.-T.; Zhao, Y.-H. Shift work and health outcomes: An umbrella review of systematic reviews and meta-analyses of epidemiological studies. *J. Clin. Sleep Med.* **2021**, *18*, 653–662. [CrossRef] [PubMed]
6. Loef, B.; van Baarle, D.; van der Beek, A.J.; Sanders, E.A.M.; Bruijning-Verhagen, P.; Proper, I.K. Shift Work and Respiratory Infections in Health-Care Workers. *Am. J. Epidemiol.* **2019**, *188*, 509–517. [CrossRef]
7. Wei, F.; Chen, W.; Lin, X. Night-shift work, breast cancer incidence, and all-cause mortality: An updated meta-analysis of prospective cohort studies. *Sleep Breath.* **2021**, *26*, 1509–1526. [CrossRef]
8. Nätti, J.; Anttila, T.; Oinas, T.; Mustosmäki, A. Night Work and Mortality: Prospective Study Among Finnish Employees Over the Time Span 1984 to 2008. *Chronobiol. Int.* **2012**, *29*, 601–609. [CrossRef]
9. Trudel-Fitzgerald, C.; Zhou, E.; Poole, E.M.; Zhang, X.; Michels, K.B.; Eliassen, A.H.; Chen, W.Y.; Holmes, M.D.; Tworoger, S.S.; Schernhammer, E. Sleep and survival among women with breast cancer: 30 years of follow-up within the Nurses' Health Study. *Br. J. Cancer* **2017**, *116*, 1239–1246. [CrossRef]

10. Dibner, C.; Schibler, U.; Albrecht, U. The Mammalian Circadian Timing System: Organization and Coordination of Central and Peripheral Clocks. *Annu. Rev. Physiol.* **2010**, *72*, 517–549. [[CrossRef](#)]
11. Roenneberg, T.; Merrow, M. The Circadian Clock and Human Health. *Curr. Biol.* **2016**, *26*, R432–R443. [[CrossRef](#)]
12. Leung, G.K.W.; Huggins, C.E.; Ware, R.S.; Bonham, M.P. Time of day difference in postprandial glucose and insulin responses: Systematic review and meta-analysis of acute postprandial studies. *Chronobiol. Int.* **2019**, *37*, 311–326. [[CrossRef](#)] [[PubMed](#)]
13. Oosterman, E.J.; Wopereis, S.; Kalsbeek, A. The Circadian Clock, Shift Work, and Tissue-Specific Insulin Resistance. *Endocrinology* **2020**, *161*, bqaa180. [[CrossRef](#)] [[PubMed](#)]
14. Berg, R.V.D.; Mook-Kanamori, D.O.; Donga, E.; van Dijk, M.; van Dijk, J.G.; Lammers, G.-J.; van Kralingen, K.W.; Prehn, C.; Adamski, J.; Romijn, J.A.; et al. A single night of sleep curtailment increases plasma acylcarnitines: Novel insights in the relationship between sleep and insulin resistance. *Arch. Biochem. Biophys.* **2016**, *589*, 145–151. [[CrossRef](#)] [[PubMed](#)]
15. Skene, D.J.; Skorniyakov, E.; Chowdhury, N.R.; Gajula, R.P.; Middleton, B.; Satterfield, B.C.; Porter, K.I.; Van Dongen, H.P.A.; Gaddameedhi, S. Separation of circadian- and behavior-driven metabolite rhythms in humans provides a window on peripheral oscillators and metabolism. *Proc. Natl. Acad. Sci. USA* **2018**, *115*, 7825–7830. [[CrossRef](#)]
16. Würtz, P.; Kangas, A.J.; Soininen, P.; Lawlor, A.D.; Smith, G.D.; Ala-Korpela, M. Quantitative Serum Nuclear Magnetic Resonance Metabolomics in Large-Scale Epidemiology: A Primer on -Omic Technologies. *Am. J. Epidemiol.* **2017**, *186*, 1084–1096. [[CrossRef](#)] [[PubMed](#)]
17. Streng, A.A.; Loef, B.; Dollé, M.E.T.; van der Horst, G.T.J.; Chaves, I.; Proper, K.I.; van Kerkhof, L.W.M. Night shift work characteristics are associated with several elevated metabolic risk factors and immune cell counts in a cross-sectional study. *Sci. Rep.* **2022**, *12*, 2022. [[CrossRef](#)]
18. Stolk, R.P.; Rosmalen, J.G.M.; Postma, D.S.; de Boer, R.A.; Navis, G.; Slaets, J.P.J.; Ormel, J.; Wolffenbuttel, B.H.R. Universal risk factors for multifactorial diseases. *Eur. J. Epidemiol.* **2008**, *23*, 67–74. [[CrossRef](#)]
19. Scholtens, S.; Smidt, N.; Swertz, M.A.; Bakker, S.J.L.; Dotinga, A.; Vonk, J.M.; Van Dijk, F.; Van Zon, S.K.R.; Wijmenga, C.; Wolffenbuttel, B.H.R.; et al. Cohort Profile: LifeLines, a three-generation cohort study and biobank. *Int. J. Epidemiol.* **2015**, *44*, 1172–1180. [[CrossRef](#)] [[PubMed](#)]
20. Sijtsma, A.; Rienks, J.; van der Harst, P.; Navis, G.; Rosmalen, J.G.M.; Dotinga, A. Cohort Profile Update: Lifelines, a three-generation cohort study and biobank. *Int. J. Epidemiol.* **2021**, *51*, e295–e302. [[CrossRef](#)]
21. Stevens, R.G.; Hansen, J.; Costa, G.; Haus, E.; Kauppinen, T.; Aronson, K.J.; Castaño-Vinyals, G.; Davis, S.; Frings-Dresen, M.H.W.; Fritschi, L.; et al. Considerations of circadian impact for defining ‘shift work’ in cancer studies: IARC Working Group Report. *Occup. Environ. Med.* **2011**, *68*, 154–162. [[CrossRef](#)]
22. Garde, A.H.; Begtrup, L.; Bjorvatn, B.; Bonde, J.P.; Hansen, J.; Hansen, M.; Härmä, M.; Jensen, M.A.; Kecklund, G.; Kolstad, A.H.; et al. How to schedule night shift work in order to reduce health and safety risks. *Scand. J. Work. Environ. Health* **2020**, *46*, 557–569. [[CrossRef](#)] [[PubMed](#)]
23. Brennan, L.; Gibbons, H. Sex matters: A focus on the impact of biological sex on metabolomic profiles and dietary interventions. *Proc. Nutr. Soc.* **2020**, *79*, 205–209. [[CrossRef](#)] [[PubMed](#)]
24. Boivin, D.B.; Boudreau, P.; Kosmadopoulos, A. Disturbance of the Circadian System in Shift Work and Its Health Impact. *J. Biol. Rhythm.* **2022**, *37*, 3–28. [[CrossRef](#)] [[PubMed](#)]
25. Krumsiek, J.; Mittelstrass, K.; Do, K.T.; Stücker, F.; Ried, J.; Adamski, J.; Peters, A.; Illig, T.; Kronenberg, F.; Friedrich, N.; et al. Gender-specific pathway differences in the human serum metabolome. *Metabolomics* **2015**, *11*, 1815–1833. [[CrossRef](#)]
26. Proper, K.I.; Jaarsma, E.; Robroek, S.J.W.; Schram, J.L.D.; Boshuizen, H.; Picavet, H.S.J.; Verschuren, W.M.M.; van Oostrom, S.H. The mediating role of unhealthy behavior in the relationship between shift work and perceived health. *BMC Public Health* **2021**, *21*, 1300. [[CrossRef](#)]
27. Hu, X.; Fan, Y.; Li, H.; Zhou, R.; Zhao, X.; Sun, Y.; Zhang, S. Impacts of Cigarette Smoking Status on Metabolomic and Gut Microbiota Profile in Male Patients With Coronary Artery Disease: A Multi-Omics Study. *Front. Cardiovasc. Med.* **2021**, *8*, 766739. [[CrossRef](#)]
28. Stacklies, W.; Redestig, H.; Scholz, M.; Walther, D.; Selbig, J. pcaMethods a bioconductor package providing PCA methods for incomplete data. *Bioinformatics* **2007**, *23*, 1164–1167. [[CrossRef](#)]
29. Deelen, J.; Kettunen, J.; Fischer, K.; van der Spek, A.; Trompet, S.; Kastenmüller, G.; Boyd, A.; Zierer, J.; Akker, E.B.V.D.; Ala-Korpela, M.; et al. A metabolic profile of all-cause mortality risk identified in an observational study of 44,168 individuals. *Nat. Commun.* **2019**, *10*, 3346. [[CrossRef](#)]
30. Hart, L.M.; Vogelzangs, N.; Mook-Kanamori, O.D.; Brahimaj, A.; Nano, J.; van der Heijden, A.A.W.A.; Van Dijk, K.W.; Slieker, R.C.; Steyerberg, E.W.; Ikram, M.A.; et al. Blood Metabolomic Measures Associate With Present and Future Glycemic Control in Type 2 Diabetes. *J. Clin. Endocrinol. Metab.* **2018**, *103*, 4569–4579. [[CrossRef](#)]
31. Akker, E.B.V.D.; Trompet, S.; Wolf, J.J.B.; Beekman, M.; Suchiman, H.E.D.; Deelen, J.; Asselbergs, F.W.; Boersma, E.; Cats, D.; Elders, P.M.; et al. Metabolic Age Based on the BBMRI-NL <sup>1</sup>H-NMR Metabolomics Repository as Biomarker of Age-related Disease. *Circ. Genom. Precis. Med.* **2020**, *13*, 541–547. [[CrossRef](#)]
32. Lawler, P.R.; Mora, S. Glycosylation Signatures of Inflammation Identify Cardiovascular Risk: Some Glyc It Hot. *Circ. Res.* **2016**, *119*, 1154–1156. [[CrossRef](#)] [[PubMed](#)]
33. Otvos, J.D.; Shalurova, I.; Wolak-Dinsmore, J.; Connelly, M.A.; Mackey, R.H.; Stein, J.H.; Tracy, R.P. GlycA: A Composite Nuclear Magnetic Resonance Biomarker of Systemic Inflammation. *Clin. Chem.* **2015**, *61*, 714–723. [[CrossRef](#)] [[PubMed](#)]

34. Akinkuolie, A.O.; Pradhan, A.D.; Buring, J.E.; Ridker, P.M.; Mora, S. Novel Protein Glycan Side-Chain Biomarker and Risk of Incident Type 2 Diabetes Mellitus. *Arter. Thromb. Vasc. Biol.* **2015**, *35*, 1544–1550. [[CrossRef](#)] [[PubMed](#)]
35. Chiesa, S.T.; Charakida, M.; Georgiopoulos, G.; Roberts, J.D.; Stafford, S.J.; Park, C.; Mykkänen, J.; Kähönen, M.; Lehtimäki, T.; Ala-Korpela, M.; et al. Glycoprotein Acetyls: A Novel Inflammatory Biomarker of Early Cardiovascular Risk in the Young. *J. Am. Heart Assoc.* **2022**, *11*, e024380. [[CrossRef](#)]
36. Lawler, P.R.; Akinkuolie, A.O.; Chandler, P.D.; Moorthy, M.V.; Vandenberg, M.J.; Schaumberg, D.A.; Lee, I.-M.; Glynn, R.J.; Ridker, P.M.; Buring, J.E.; et al. Circulating N-Linked Glycoprotein Acetyls and Longitudinal Mortality Risk. *Circ. Res.* **2016**, *118*, 1106–1115. [[CrossRef](#)]
37. Ritchie, S.C.; Würtz, P.; Nath, A.P.; Abraham, G.; Havulinna, A.S.; Fearnley, L.G.; Sarin, A.-P.; Kangas, A.J.; Soininen, P.; Aalto, K.; et al. The Biomarker GlycA Is Associated with Chronic Inflammation and Predicts Long-Term Risk of Severe Infection. *Cell Syst.* **2015**, *1*, 293–301. [[CrossRef](#)]
38. Duthheil, F.; Baker, J.S.; Mermillod, M.; De Cesare, M.; Vidal, A.; Moustafa, F.; Pereira, B.; Navel, V. Shift work, and particularly permanent night shifts, promote dyslipidaemia: A systematic review and meta-analysis. *Atherosclerosis* **2020**, *313*, 156–169. [[CrossRef](#)]
39. Slade, E.; Irvin, M.R.; Xie, K.; Arnett, D.K.; Claas, S.A.; Kind, T.; Fardo, D.W.; Graf, G.A. Age and sex are associated with the plasma lipidome: Findings from the GOLDN study. *Lipids Health Dis.* **2021**, *20*, 30. [[CrossRef](#)]
40. Huang, X.; Chen, X.; Zhao, S.; Hou, J.; Huang, L.; Xu, J.; Wang, W.; He, M.; Shen, O.; Zhang, J. Metabolomic Profiles of Shift Workers and Day Workers: A Cross-Sectional Study. *Obesity* **2021**, *29*, 1074–1082. [[CrossRef](#)]
41. Rotter, M.; Brandmaier, S.; Covic, M.; Burek, K.; Hertel, J.; Troll, M.; Bader, E.; Adam, J.; Prehn, C.; Rathkolb, B.; et al. Night Shift Work Affects Urine Metabolite Profiles of Nurses with Early Chronotype. *Metabolites* **2018**, *8*, 45. [[CrossRef](#)] [[PubMed](#)]
42. Chaby, L.E.; Lasseter, H.C.; Contrepois, K.; Salek, R.M.; Turck, C.W.; Thompson, A.; Vaughan, T.; Haas, M.; Jeromin, A. Cross-Platform Evaluation of Commercially Targeted and Untargeted Metabolomics Approaches to Optimize the Investigation of Psychiatric Disease. *Metabolites* **2021**, *11*, 609. [[CrossRef](#)] [[PubMed](#)]
43. Manmadhan, A.; Lin, B.-X.; Zhong, J.; Parikh, M.; Berger, J.S.; Fisher, E.A.; Heffron, S.P.; Parikh, M.M.; Fisher, M.E.A. Elevated GlycA in severe obesity is normalized by bariatric surgery. *Diabetes Obes. Metab.* **2018**, *21*, 178–182. [[CrossRef](#)] [[PubMed](#)]
44. Gommans, F.; Jansen, N.; Stynen, D.; De Grip, A.; Kant, I. The ageing shift worker: A prospective cohort study on need for recovery, disability, and retirement intentions. *Scand. J. Work. Environ. Health* **2015**, *41*, 356–367. [[CrossRef](#)] [[PubMed](#)]
45. Costa, G. Shift work and occupational medicine: An overview. *Occup. Med.* **2003**, *53*, 83–88. [[CrossRef](#)] [[PubMed](#)]
46. Loef, B.; Dollé, M.E.; Proper, K.L.; van Baarle, D.; Initiative, L.C.R.; van Kerkhof, L.W. Night-shift work is associated with increased susceptibility to SARS-CoV-2 infection. *Chronobiol. Int.* **2022**, *39*, 1100–1109. [[CrossRef](#)]
47. Kervezee, L.; Cermakian, N.; Boivin, D.B. Individual metabolomic signatures of circadian misalignment during simulated night shifts in humans. *PLoS Biol.* **2019**, *17*, e3000303. [[CrossRef](#)]