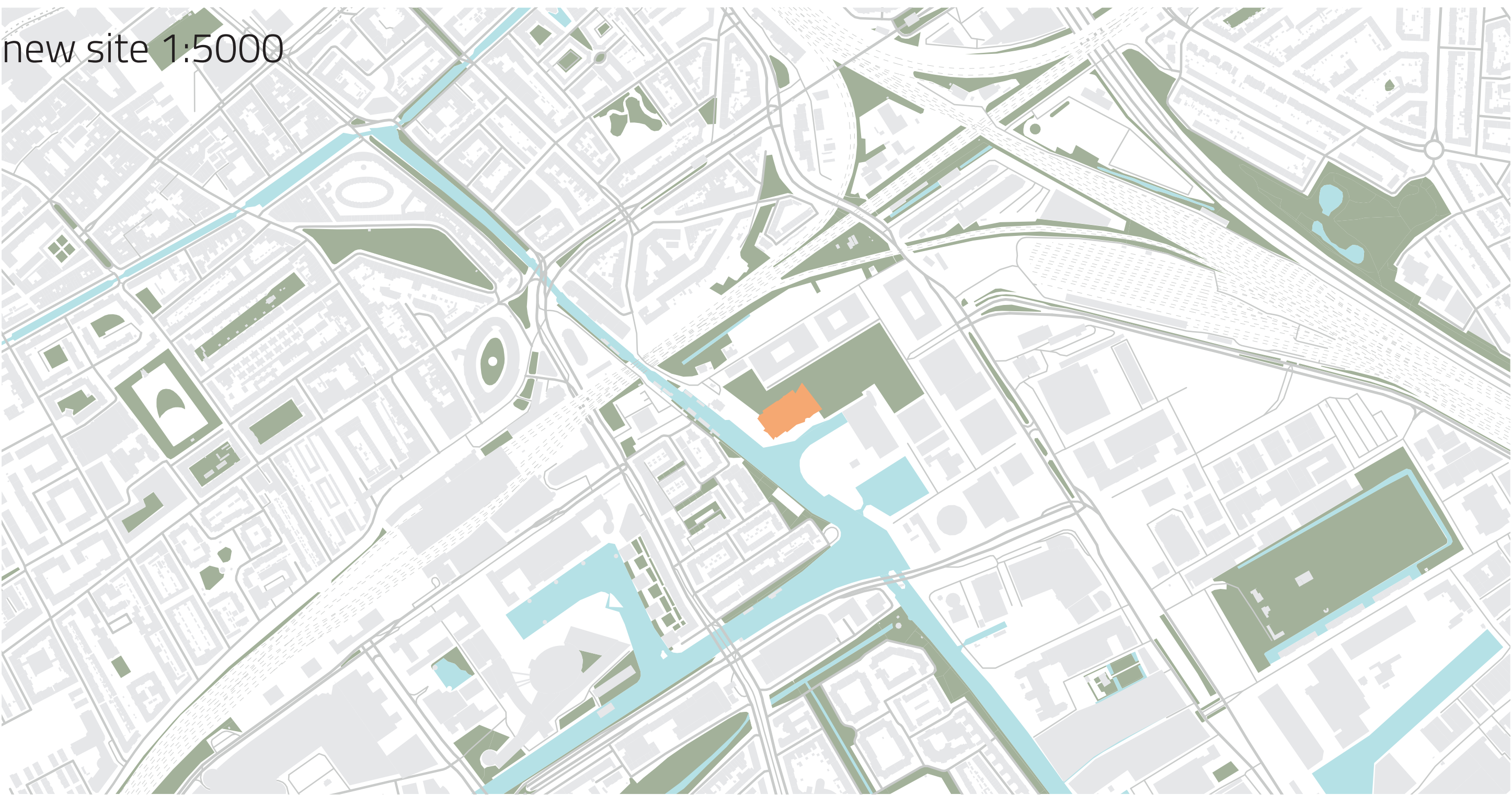


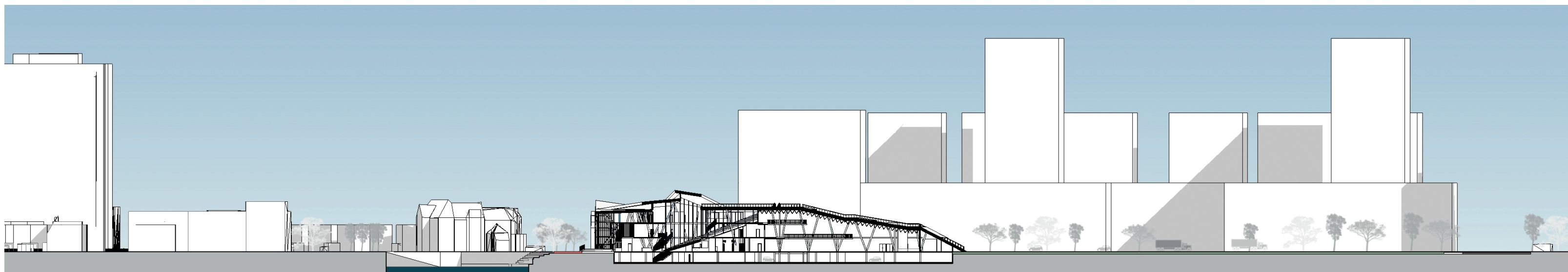
Old site 1:2000



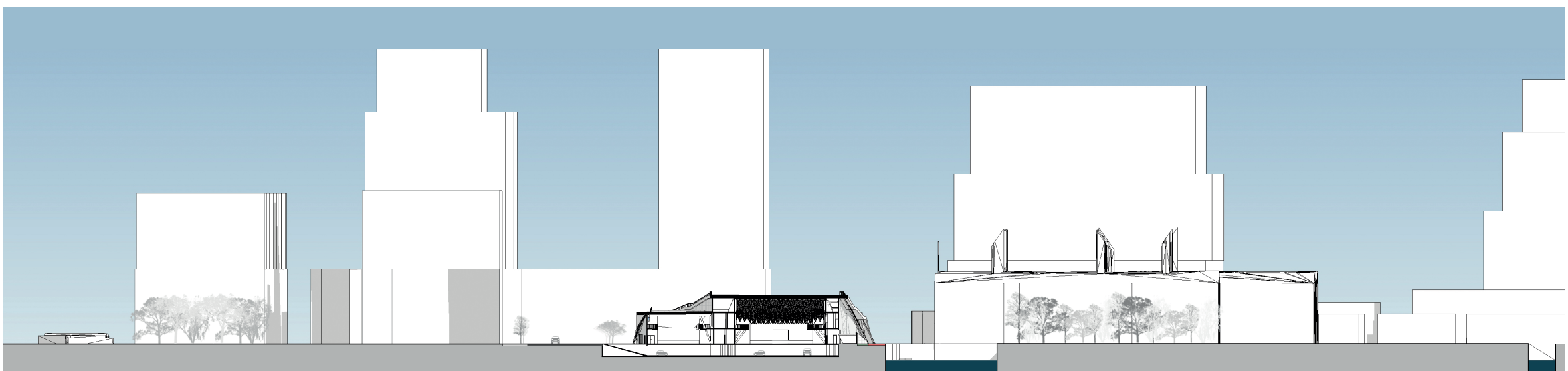
new site 1:5000



new site 1:1000



Site section 1:1000



Site section 1:1000



Venue size: Building pad: 4437 m²
Total floor area: 8113 m²

Music halls: Concert hall 1: 935 m²
Concert hall 2: 471 m²
Club 1: 116 m²
Club 2: 179 m²

Total: 1701 m²

Venue type: Amplified music with standing crowd

Capacity: 4250 people (at low risk crowd density of 2.5 people per m²)

Restaurant (245 m²)

Lounge (~250 m²)

Music recording studios (total 250 m² / 10 studios)

Music library

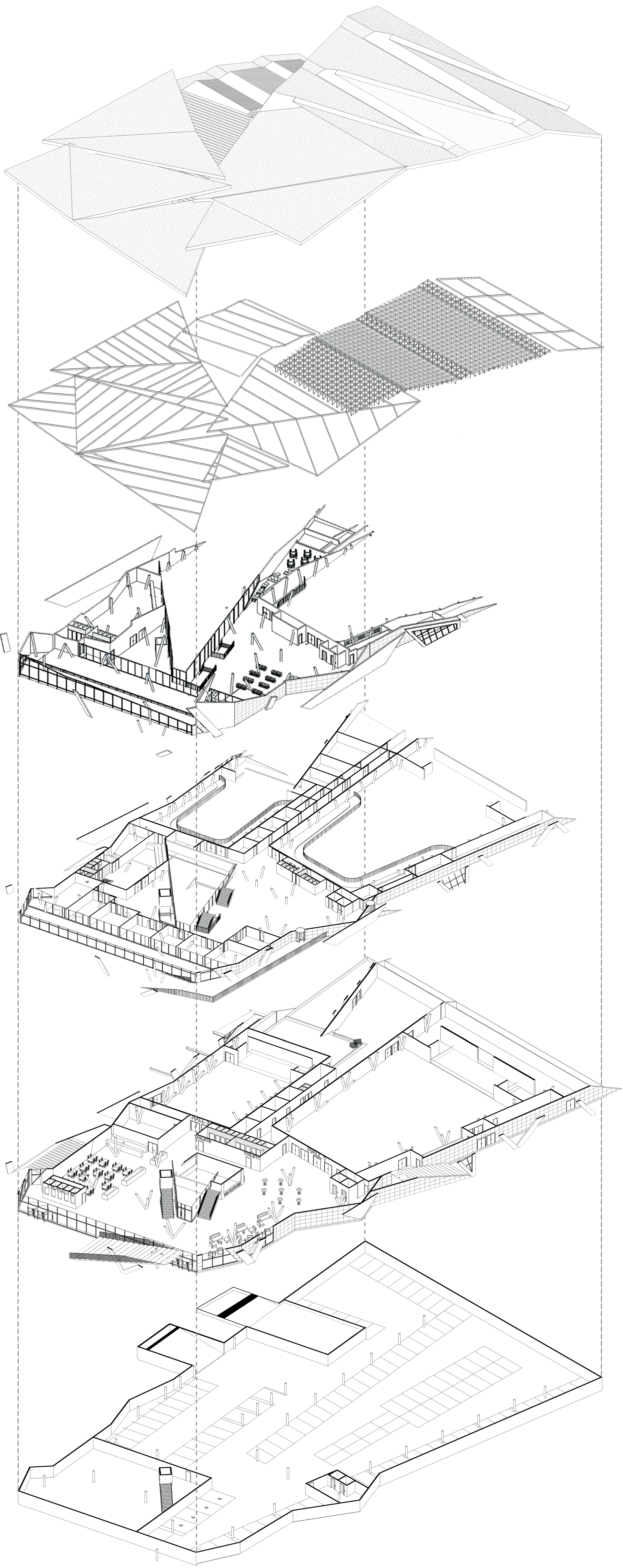
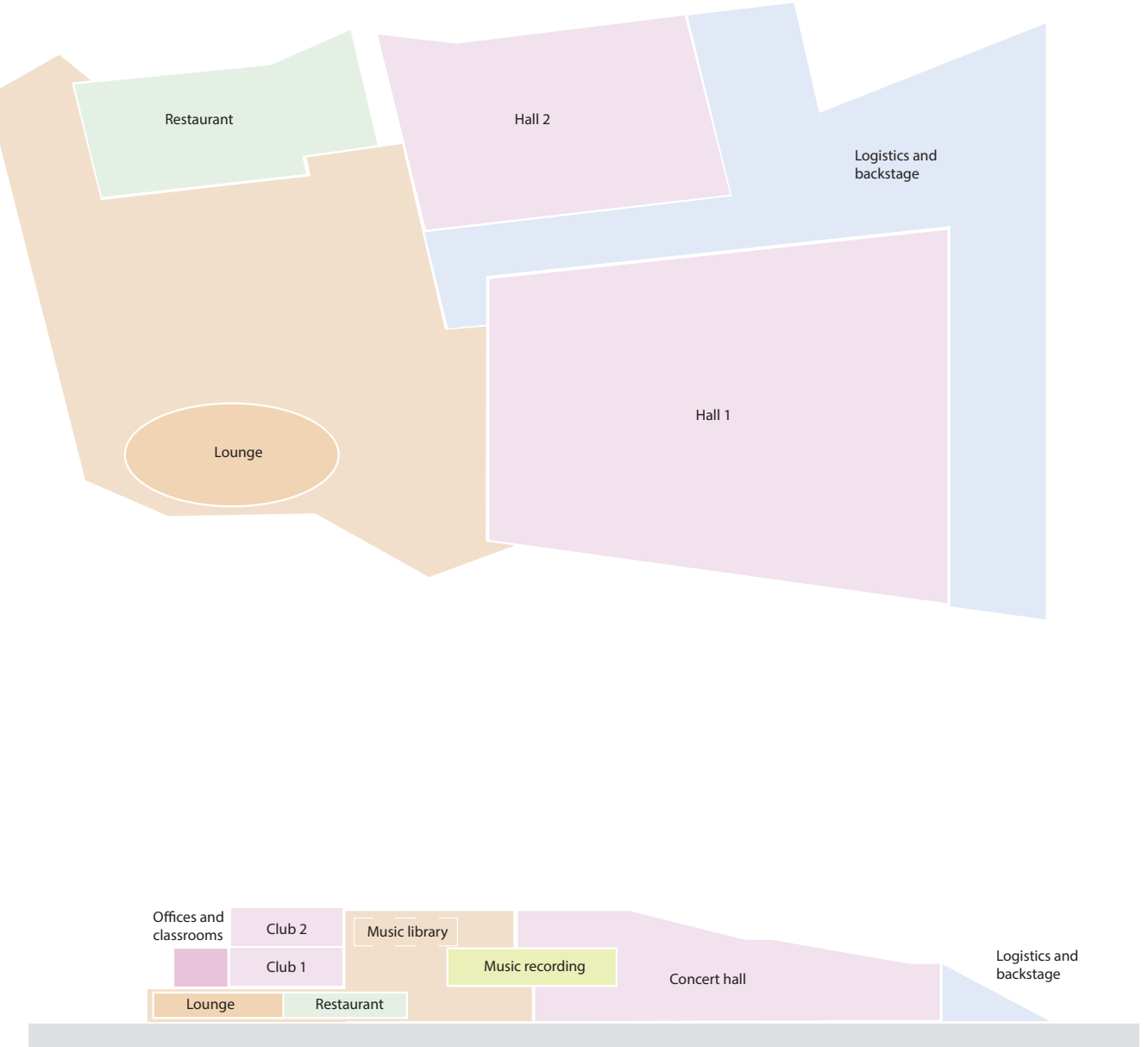
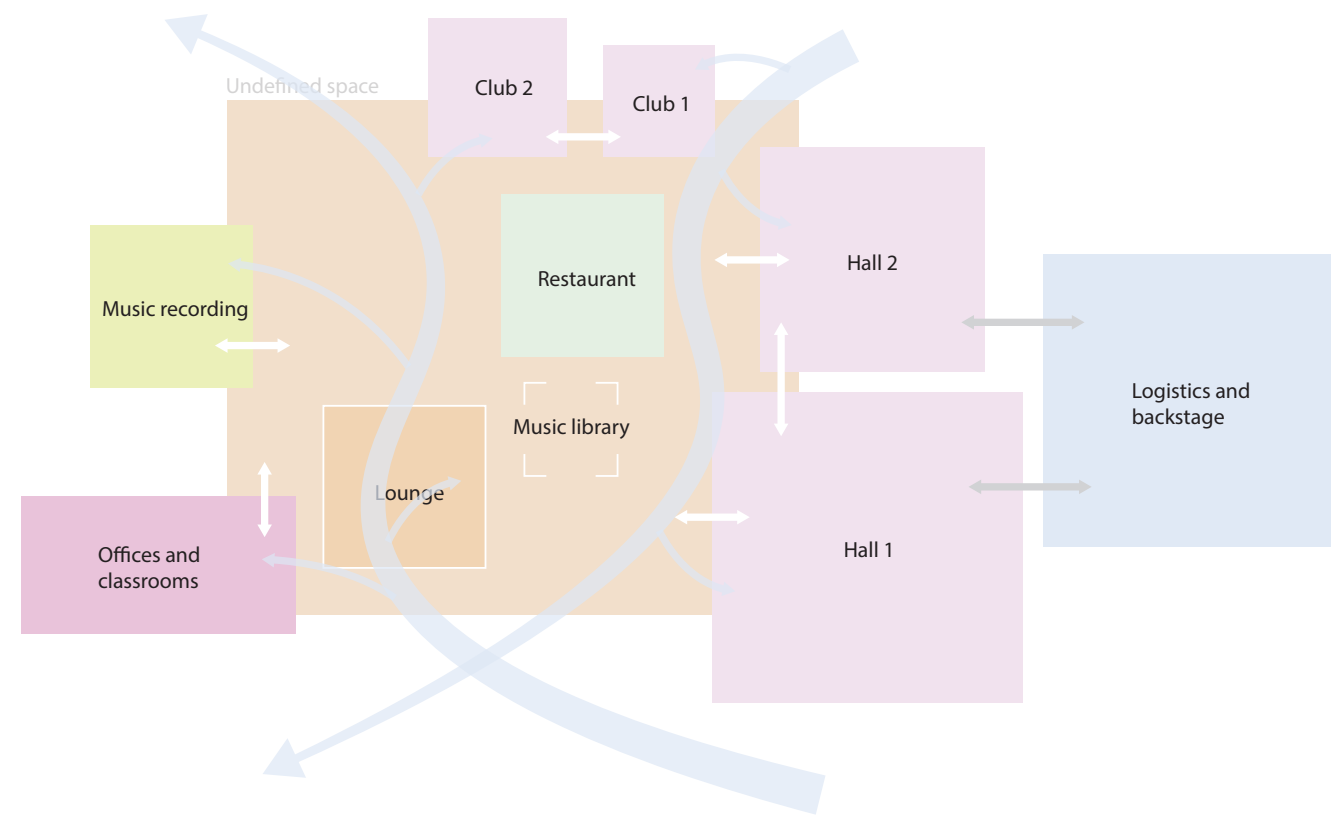
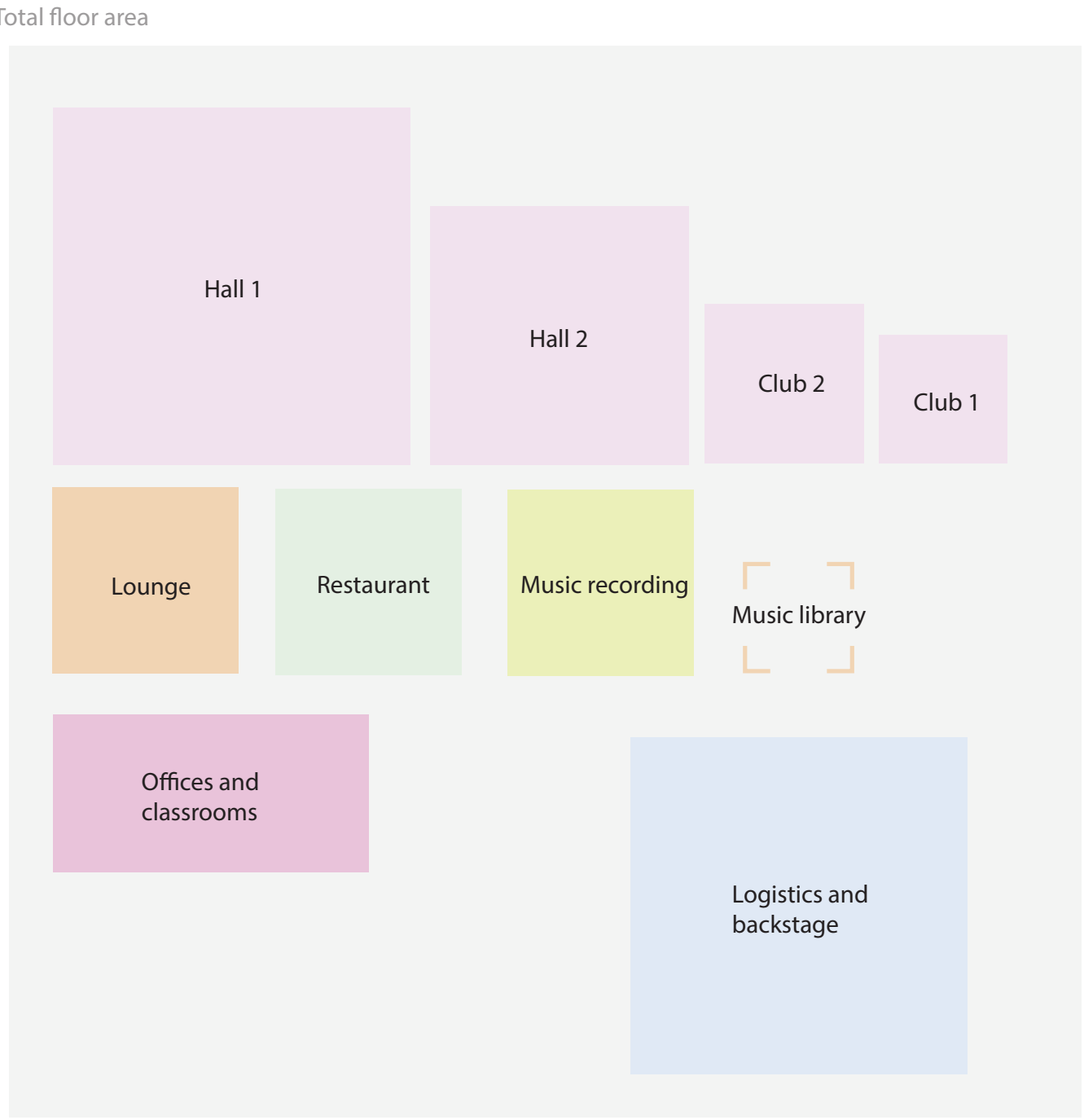
Internal logistics and backstage (~800 m²)

Offices (4 units, 176 m²)

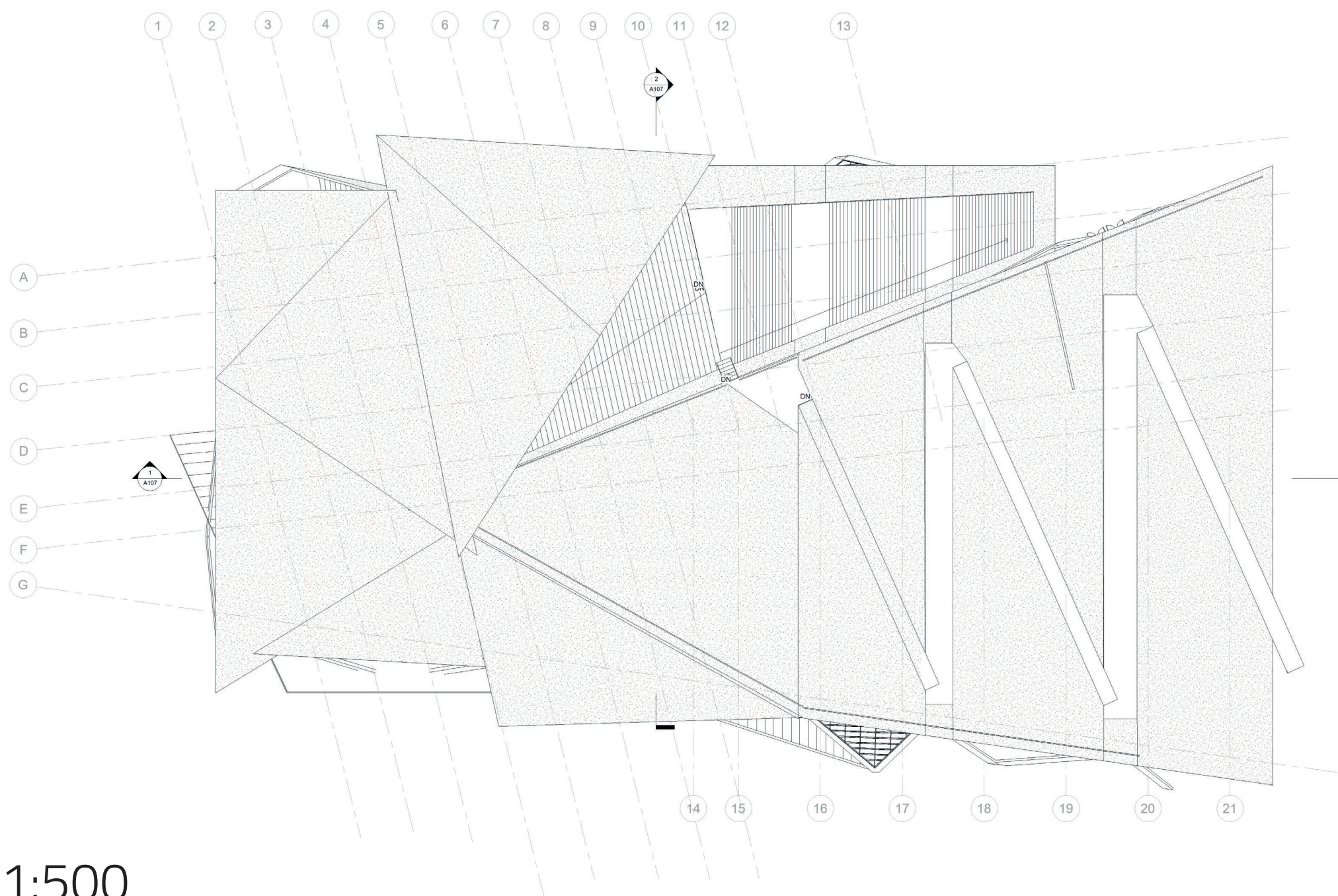
Classrooms (4 units, 134 m²)

Car and bike parking

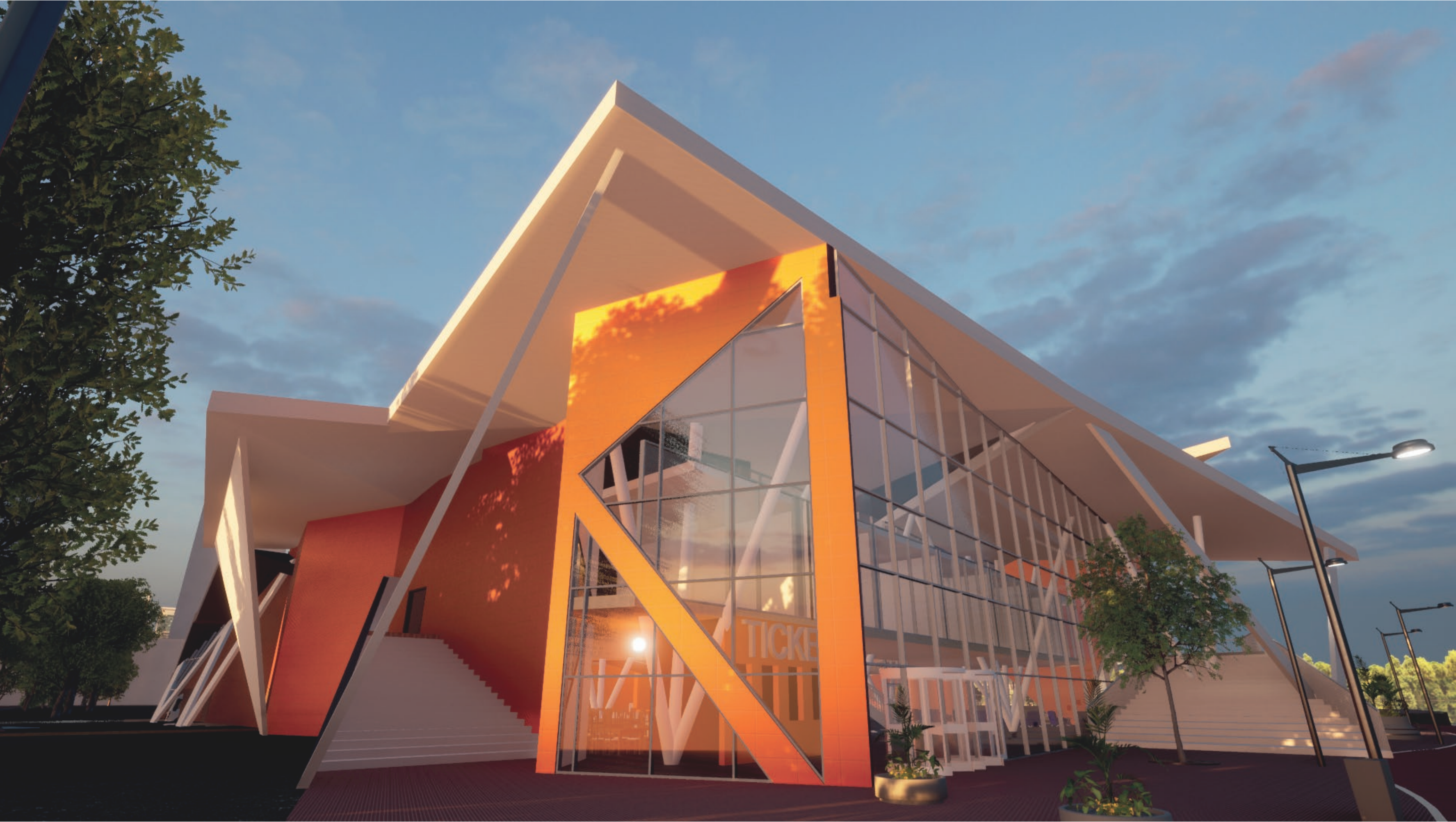
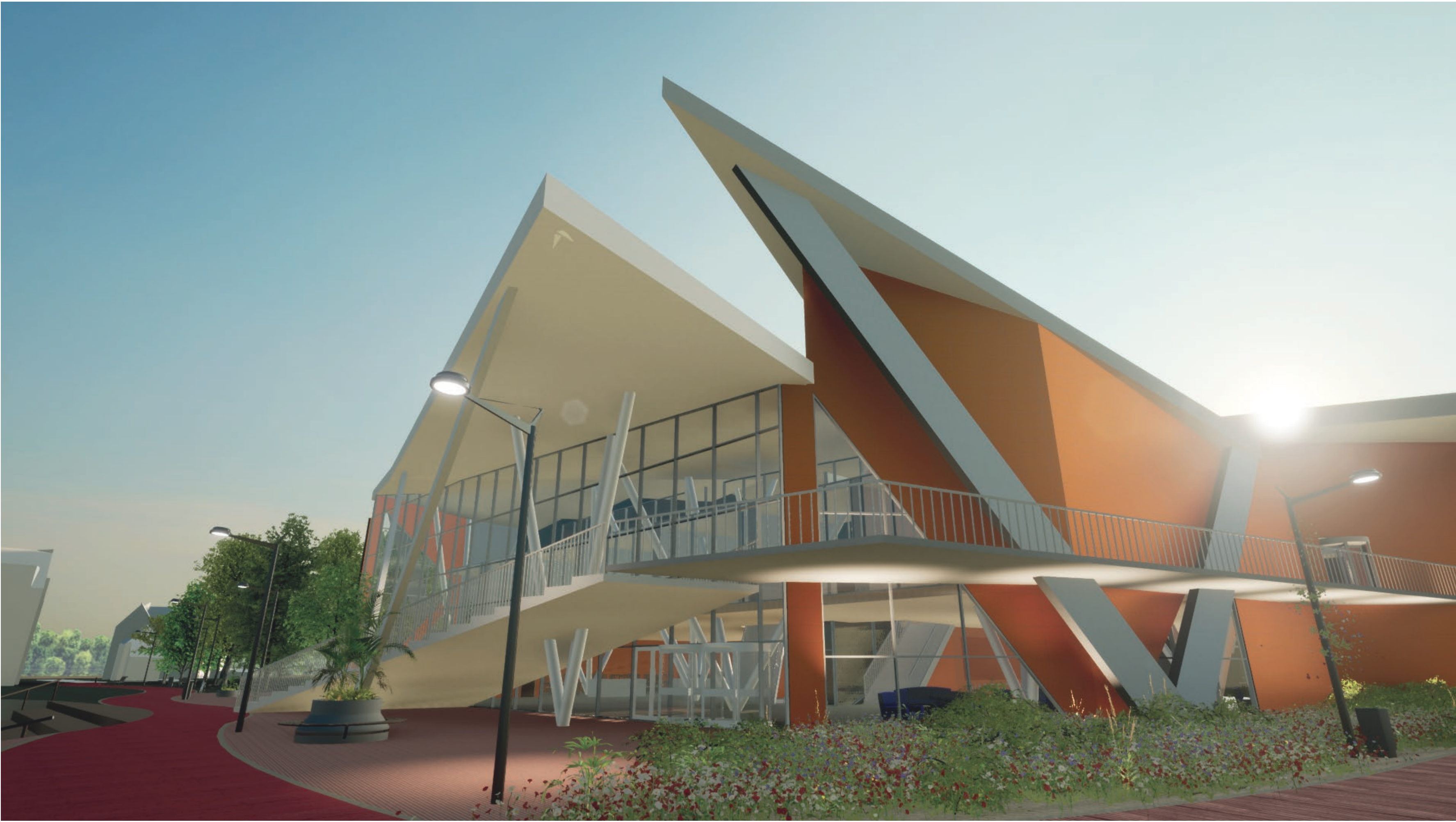
Open floorplan for use to liking

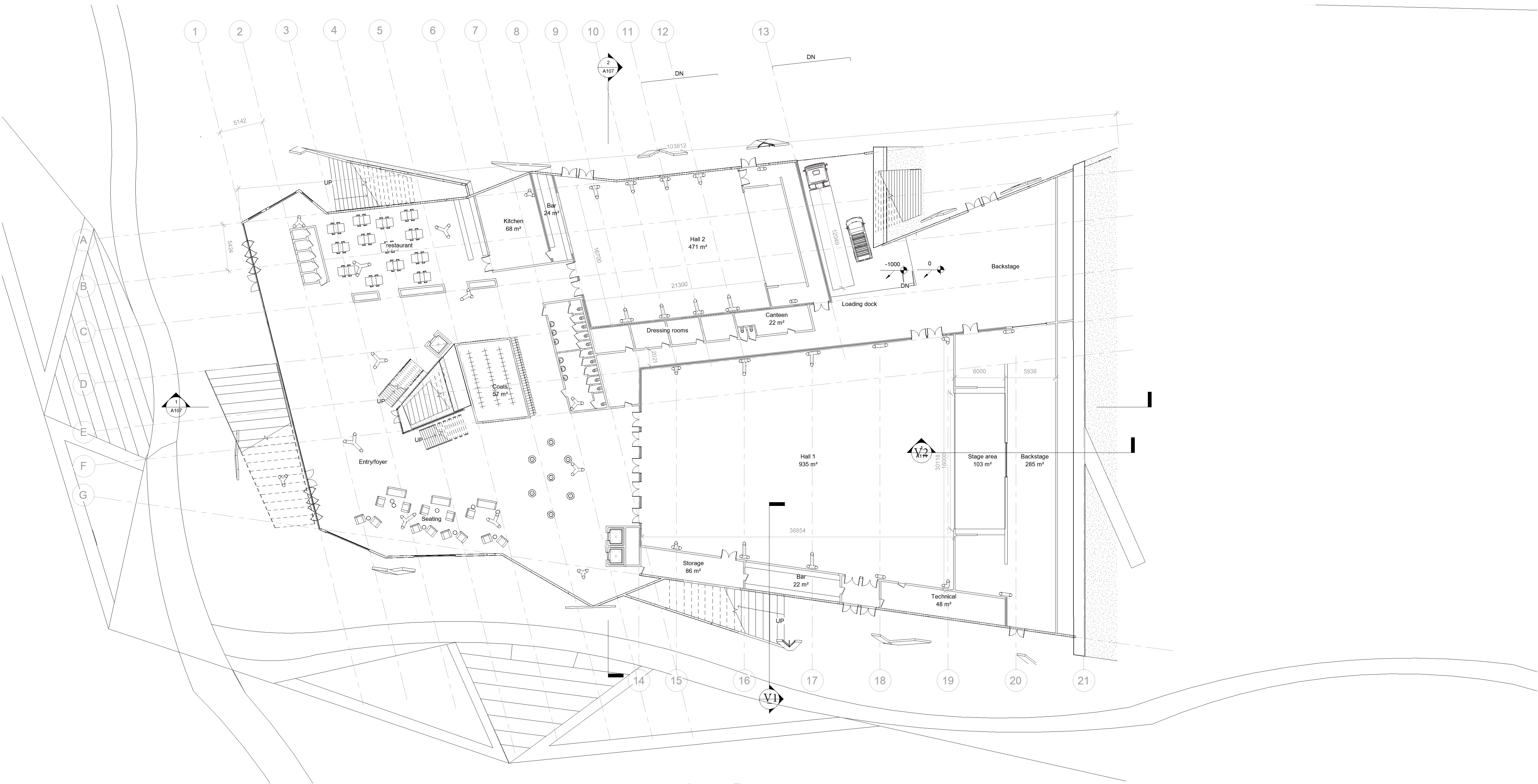


Level -1: garage 1:500

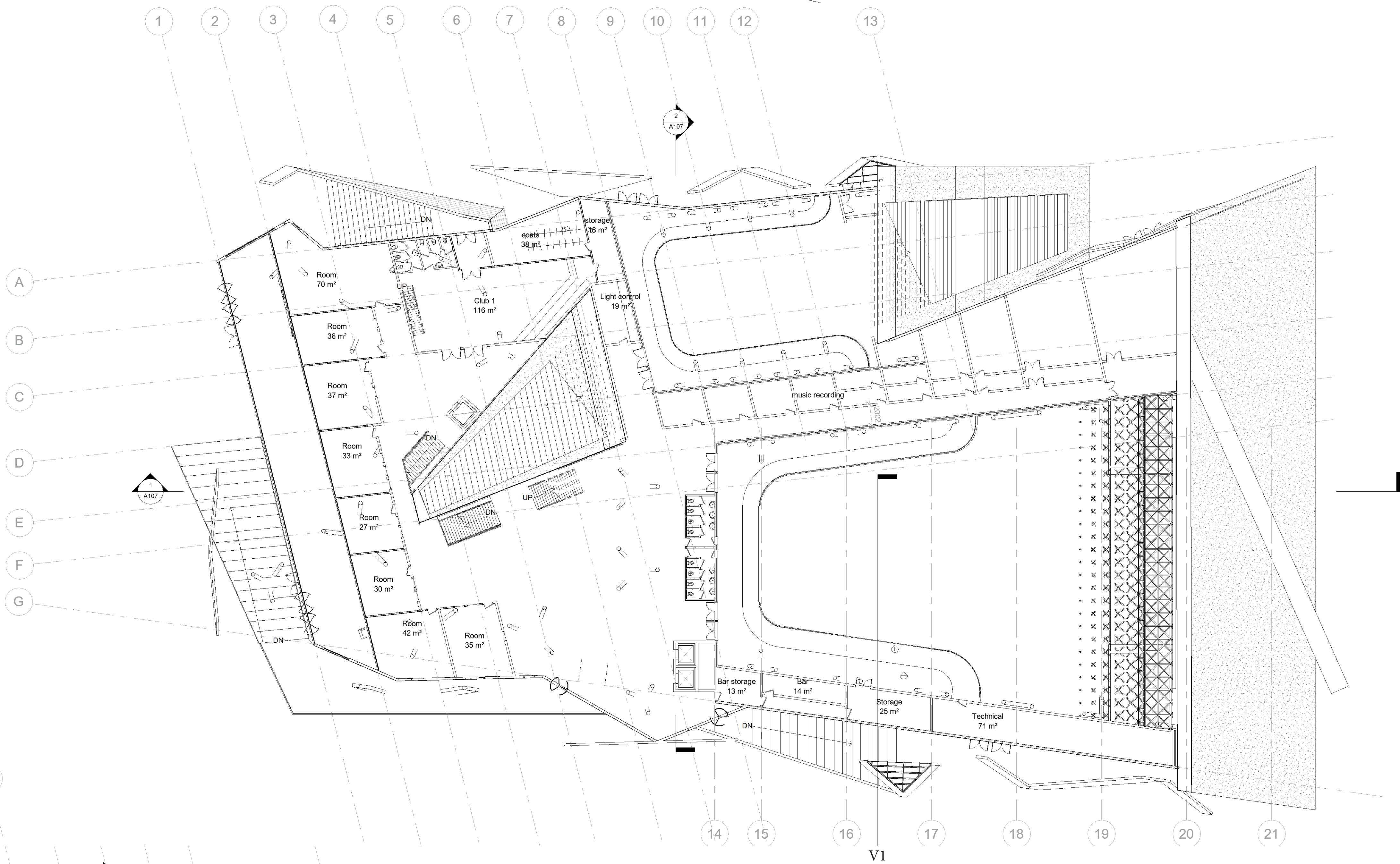


Roof 1:500

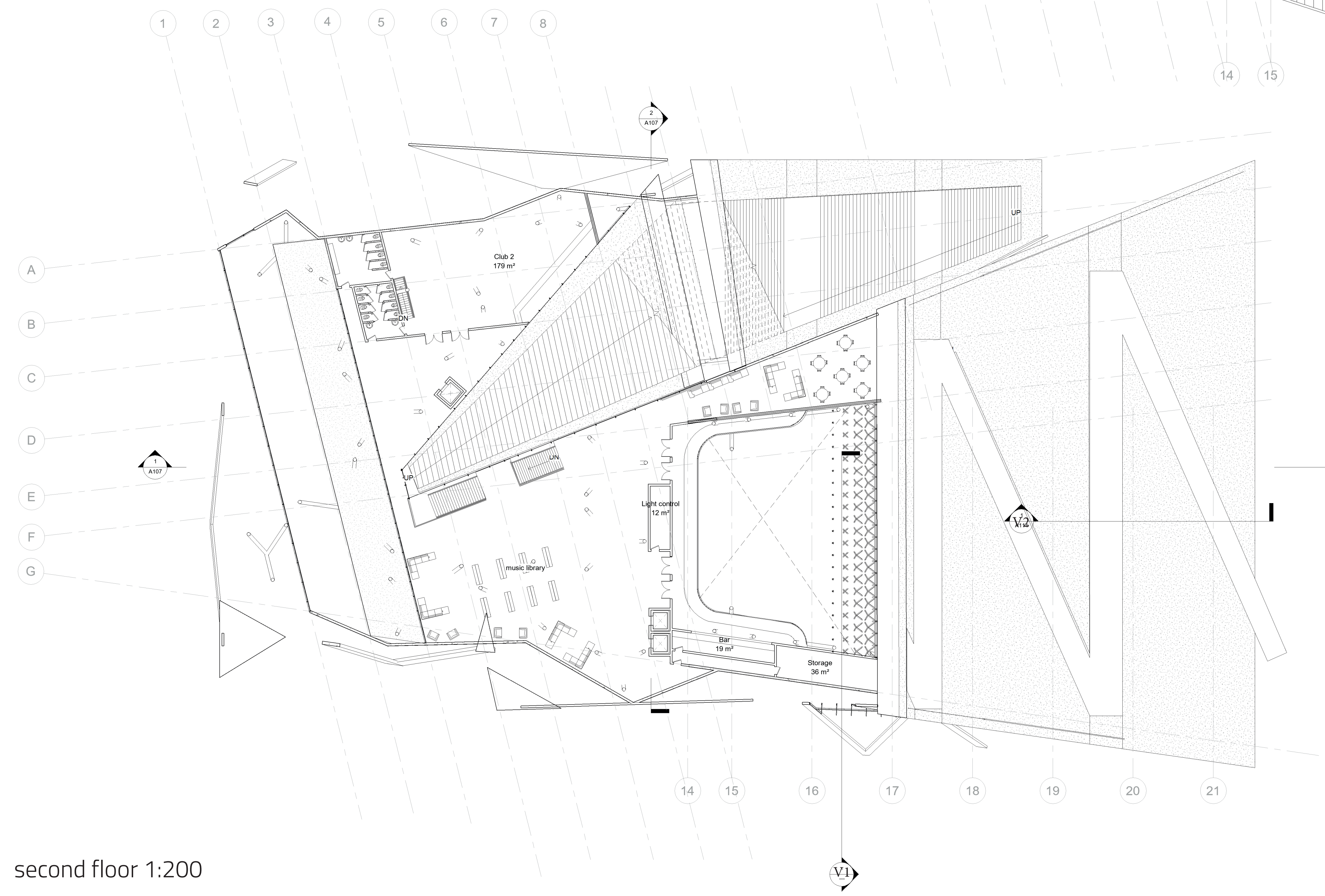




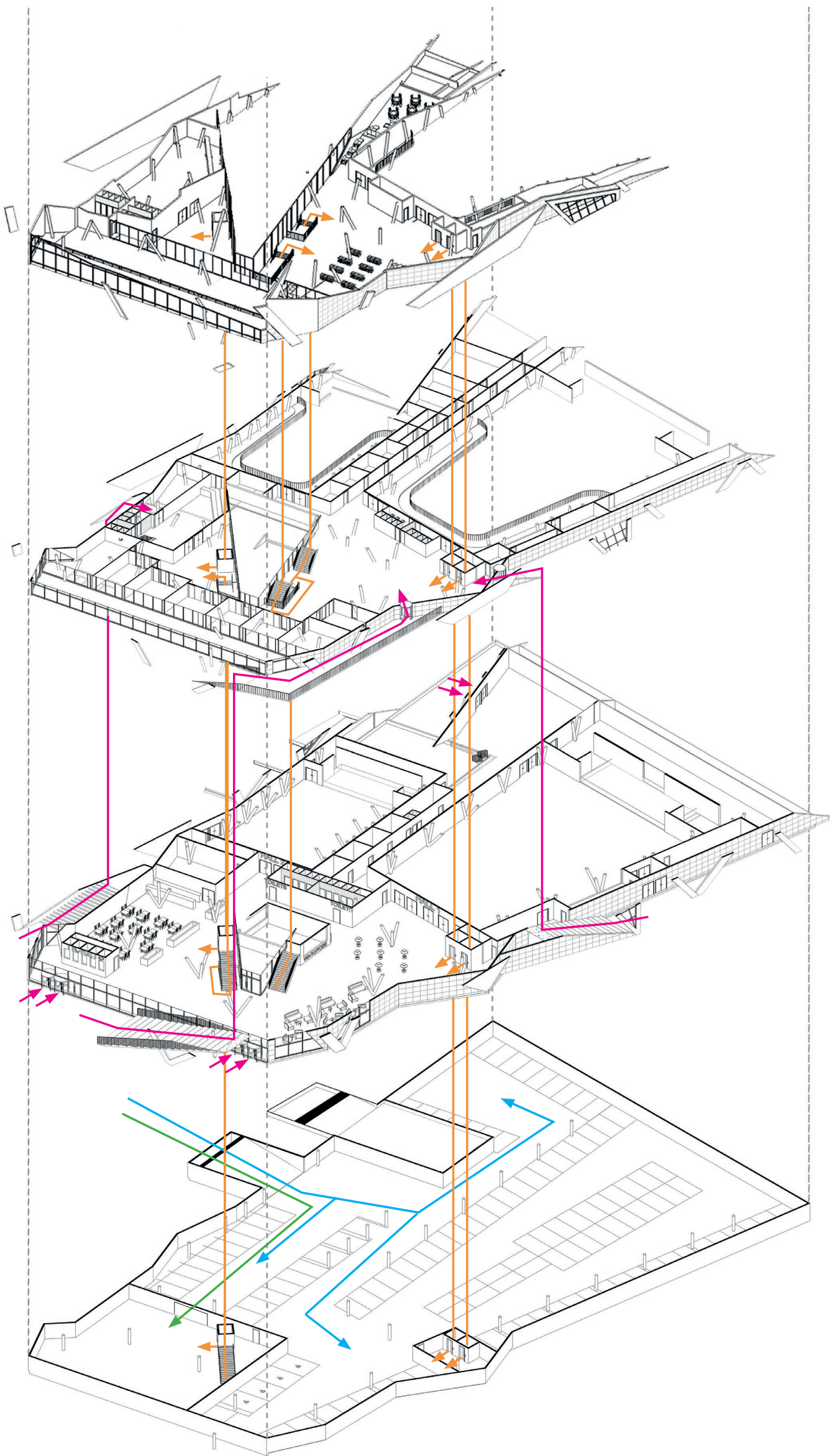
ground floor 1:200



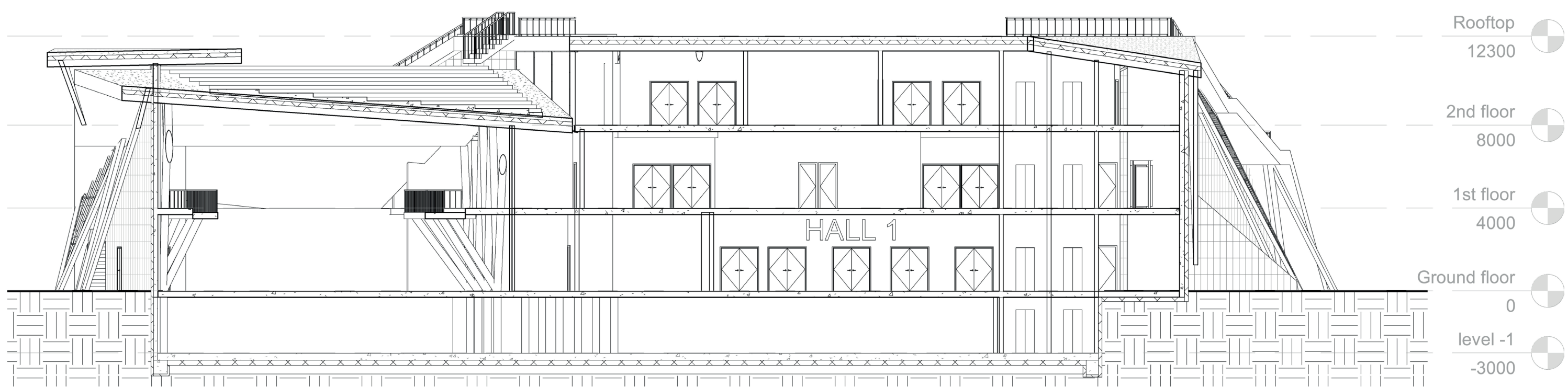
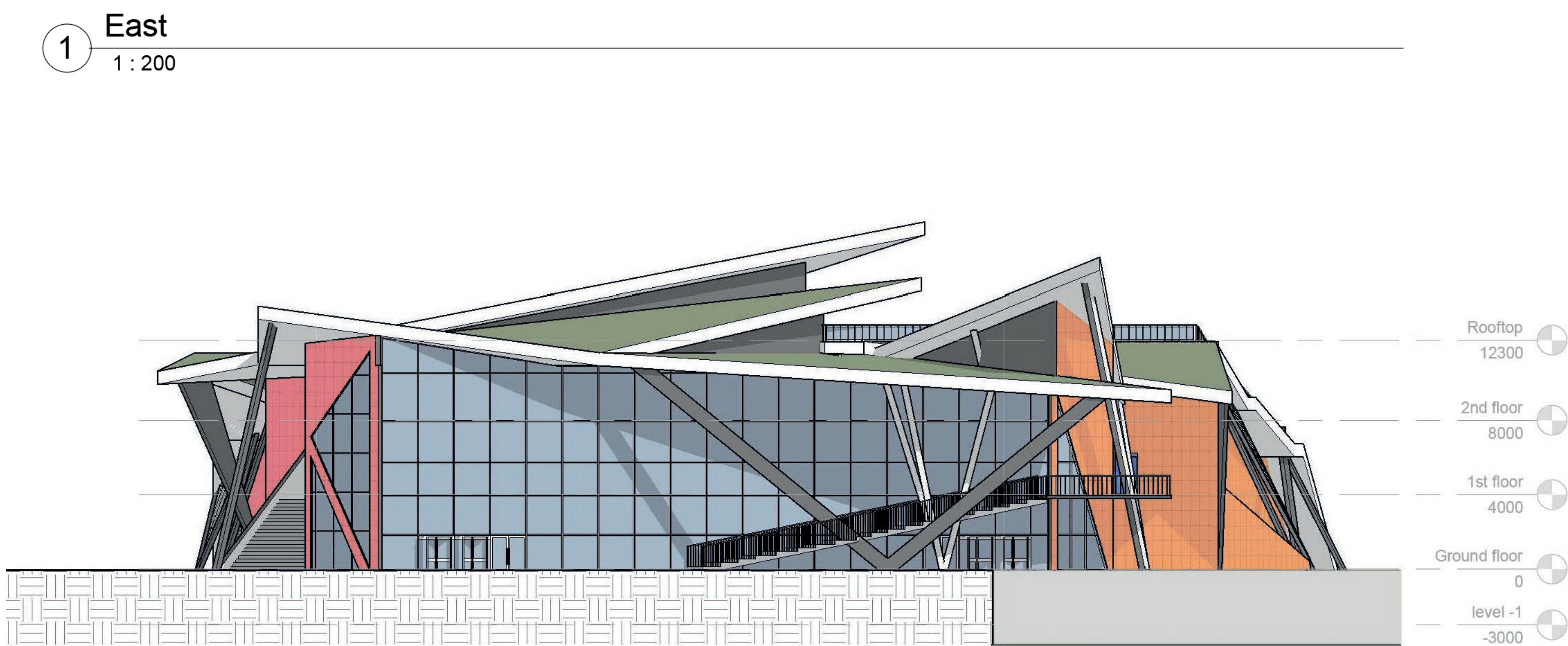
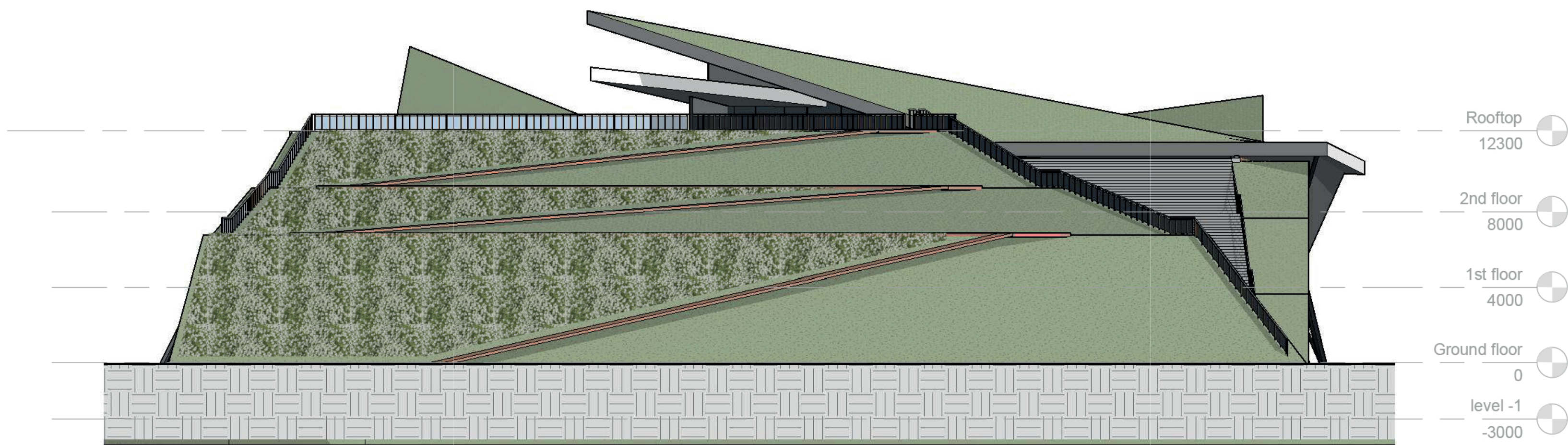
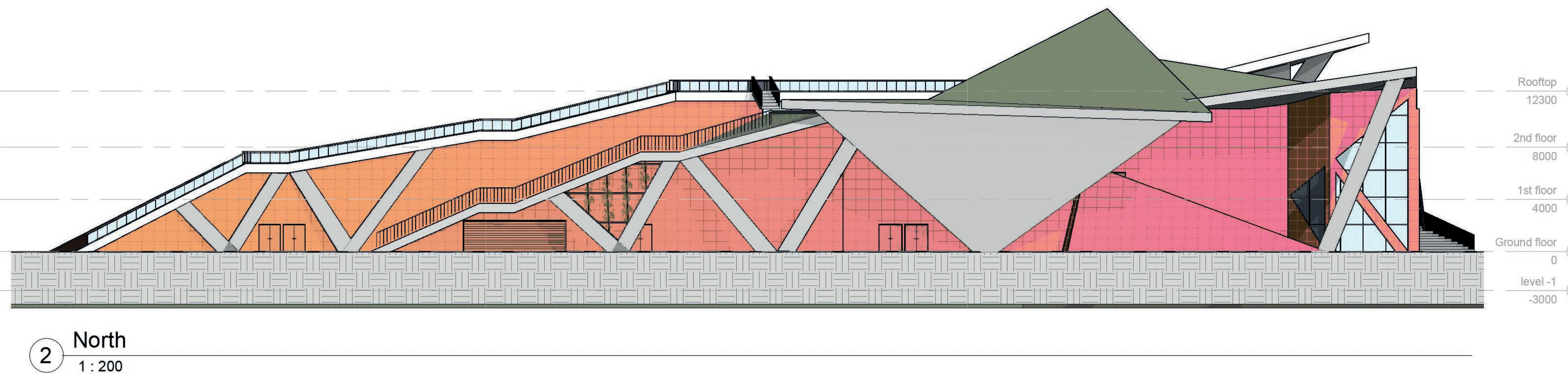
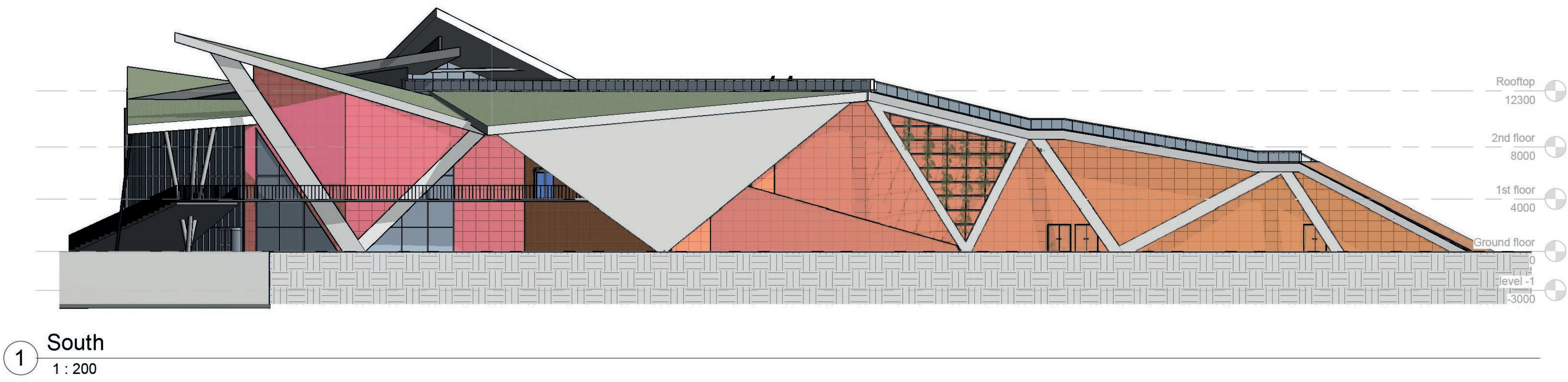
first floor 1:200



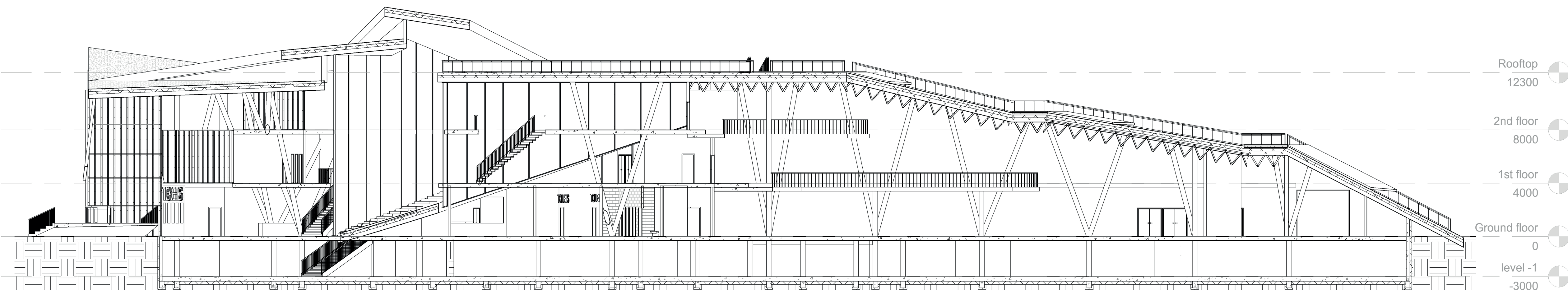
second floor 1:200



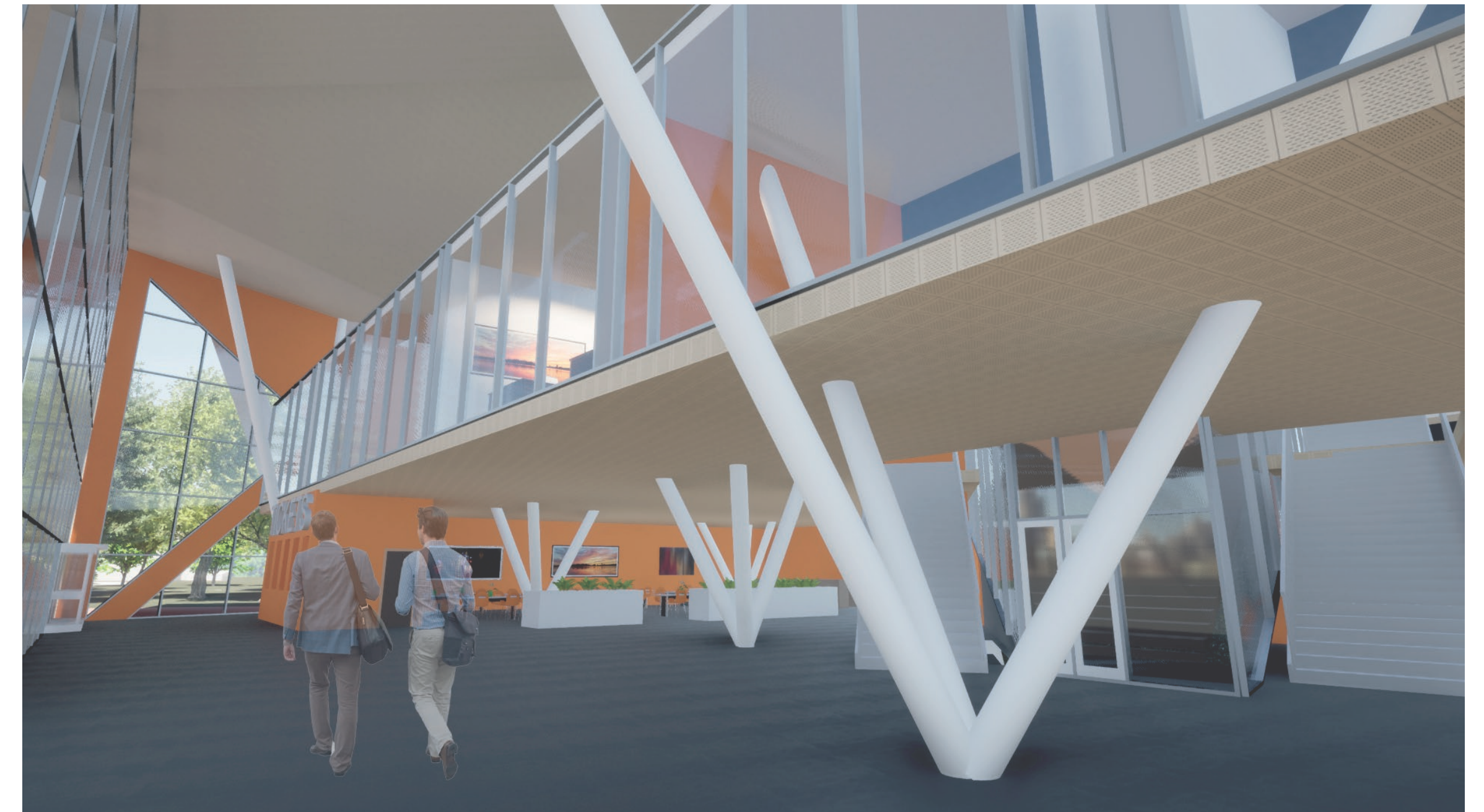
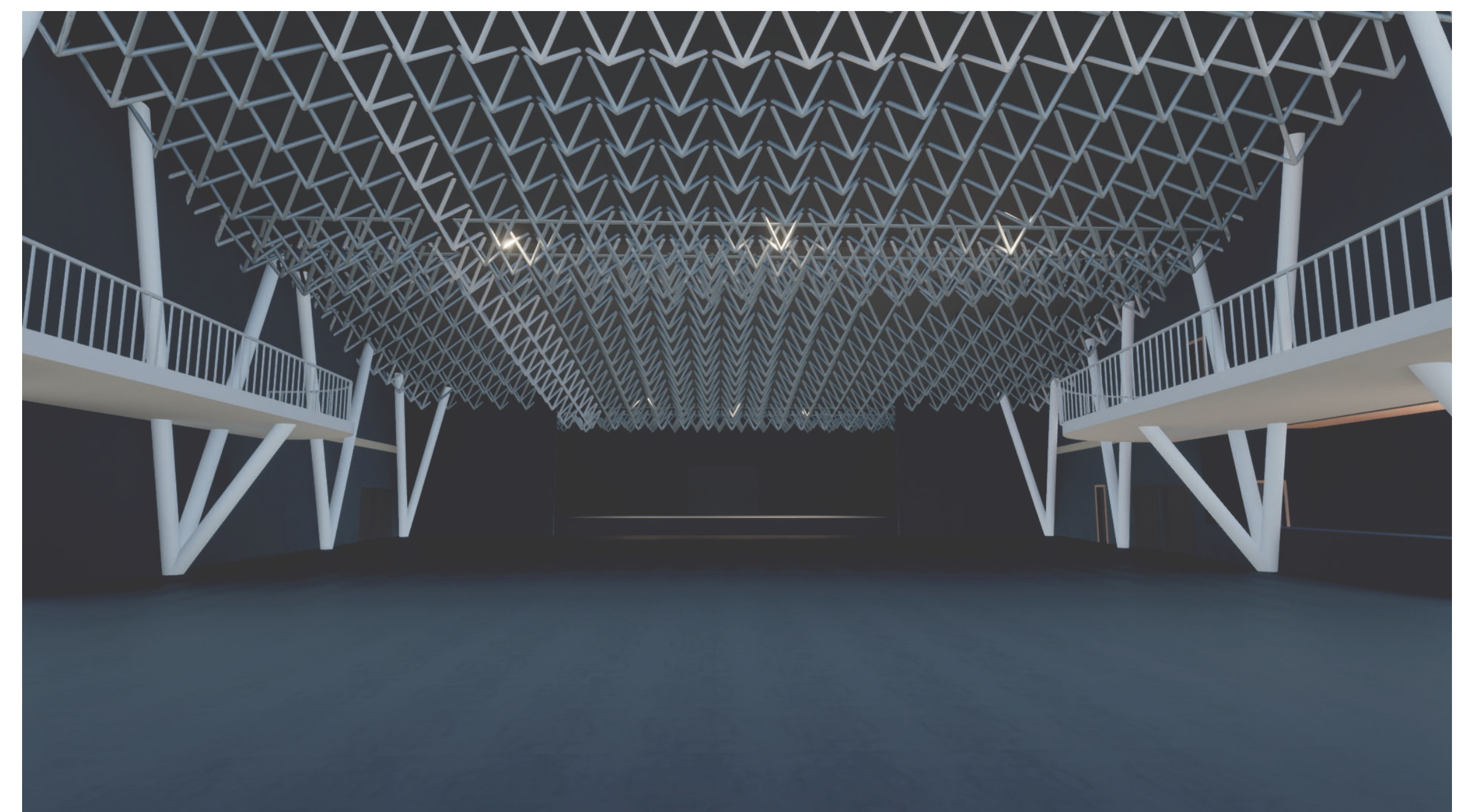
Bicycle
Car
Internal by foot
External by foot



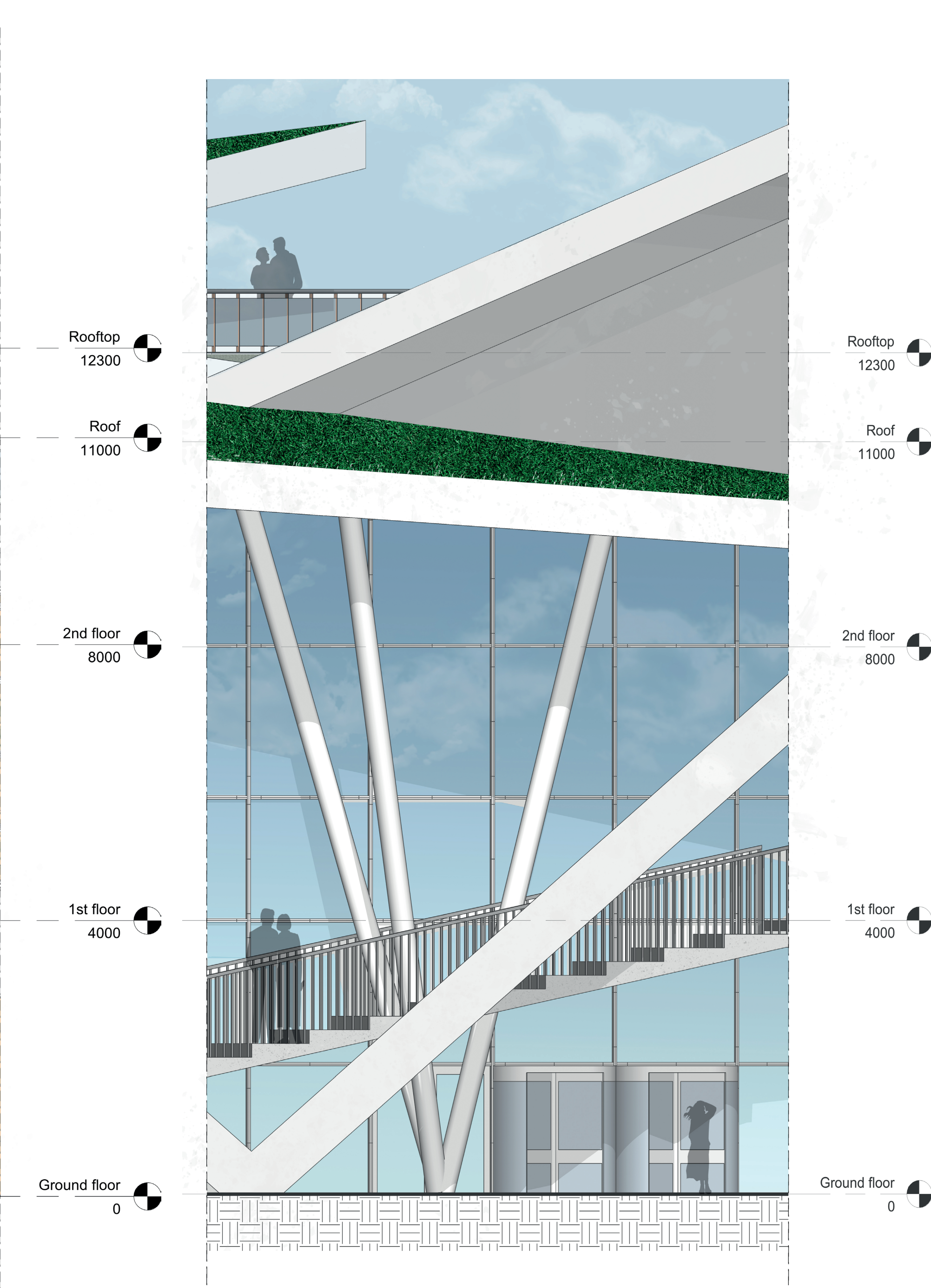
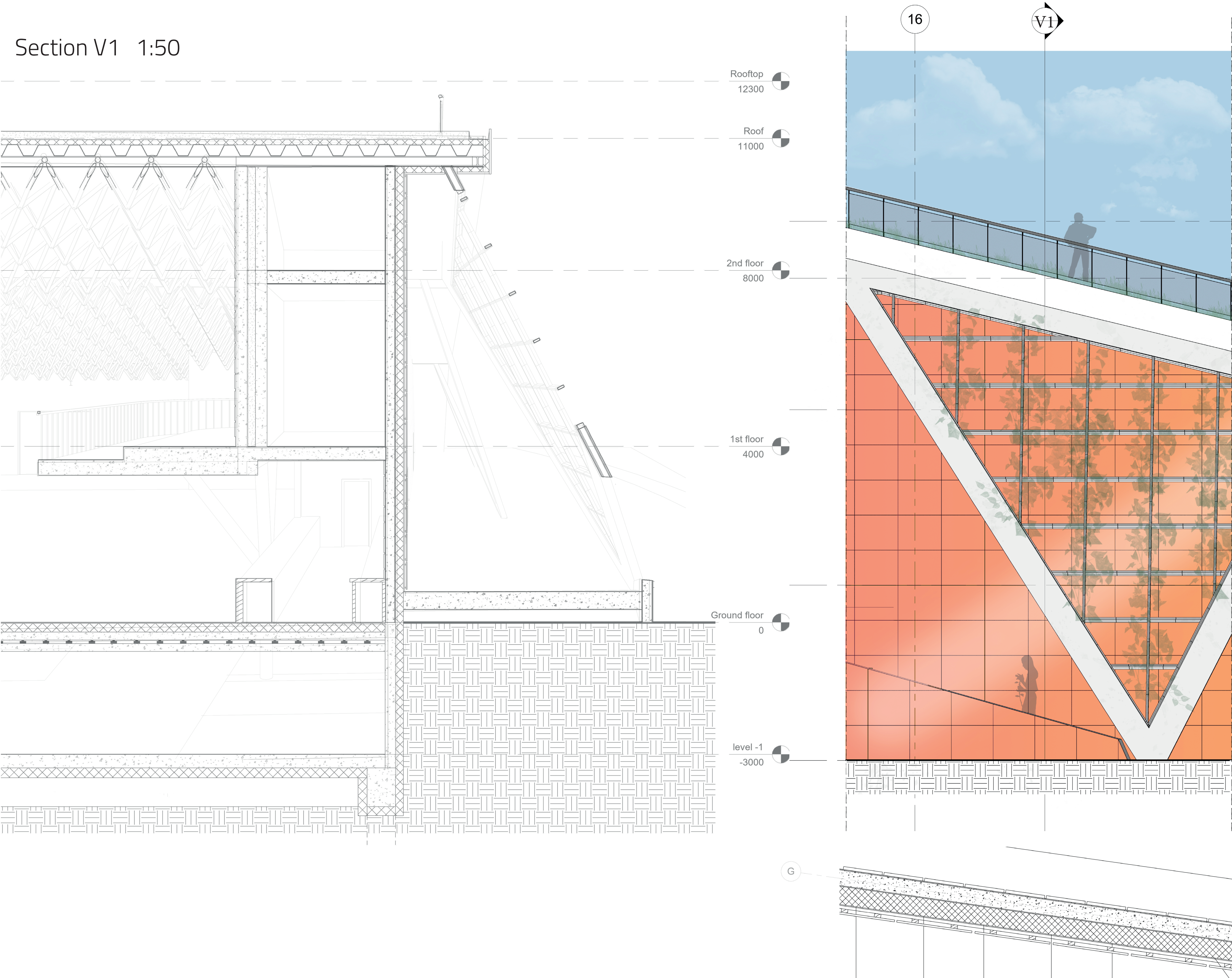
Section 2 1:200



Section 1 1:200



Section V1 1:50



Section V2 1:20

