



FALLOW

A vision of a wilder future for the Veluwe

PRESENTATION OVERVIEW

Part I: Setting up

Problem statement and research questions

Part II: Taking a closer look

Literature Research

Part III: Putting pen to paper

Design and vision

Part IV: A Point on the Horizon

Reflection and Conclusions





SETTING UP

PART I

*Problem statement and
Societal Relevance*

Site introduction

*Methodology and Research
Questions*

Theoretical Framework

A Global Crisis, A Local Catastrophe

Problem Statement and Societal Relevance

“...around 25 percent of species in assessed animal and plant groups are threatened [and] around 1 million species already face extinction, many within decades...”

(IPBES, 2019)

“Overall, 81% of protected habitats are in a poor or bad state, 60-70% of soils are degraded...”
(European Environment Agency, 2025).

“89% of all protected habitats in the Netherlands are considered to be in a bad condition...”

(IUCN NL et al., 2025)



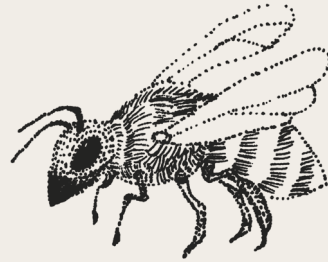
At your service

Problem Statement and Societal Relevance

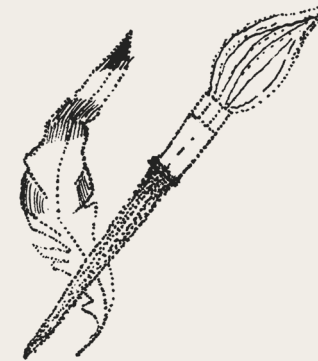
Provisioning services



Regulating services



Cultural services



Supporting services



An Ethical Argument

Problem Statement and Societal Relevance

“A system of conservation based solely on economic self-interest is hopelessly lopsided”

- Aldo Leopold 1987

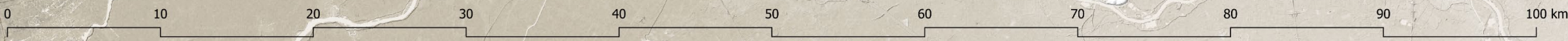
“Seldom, if ever, does Nature operate in closed and separate compartments.”

- Rachel L. Carson, 1962



Reflections on the Veluwe

Site Introduction



Reflections on the Veluwe

Site Introduction



Main Research Question

Design and Research Methodology

What can landscape architectural rewilding design do

*to improve **biodiversity** and **ecological integrity**,*

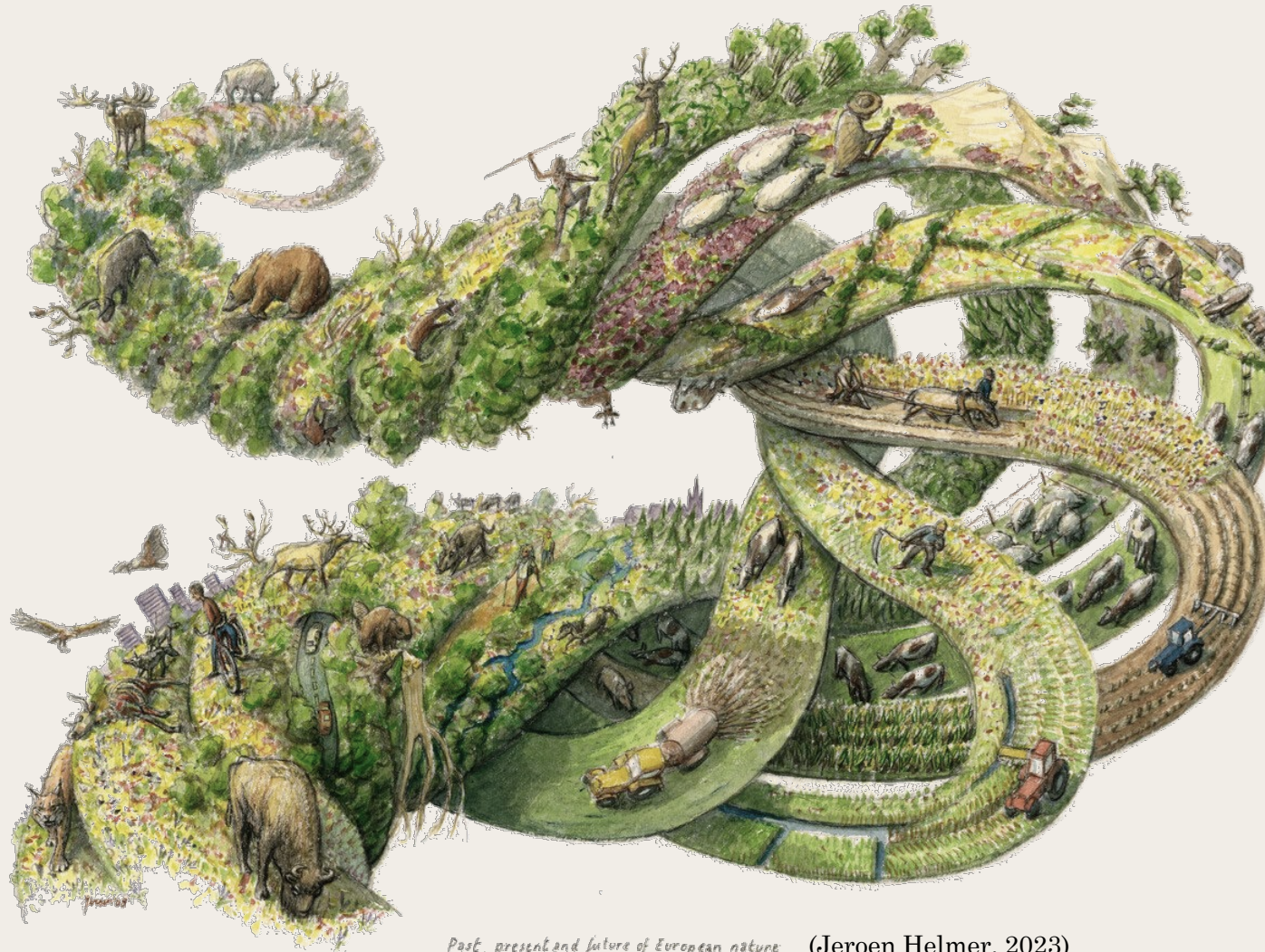
*in a landscape where management has focussed on the maintenance and facilitation of **heritage landscapes** and **outdoor recreation**,*

without erasing these dimensions?



Rewilding and Heritage Design

Theoretical Framework



Past, present and future of European nature (Jeroen Helmer, 2023)



TAKING A CLOSER LOOK

PART II

Natural processes

Landscape Biography

Natural Processes

Literature Research

The Seed-Bank



Natural Grazing



(Photo by Dirk Goudkuil)

Disturbance



(NOS Nieuws, 2026)

The Nutrient Cycle



The Ecology of Fear



(RvB fotografie, 2024)

Habitat Succession



Landscape Biography

Literature Research



Saalian

Eemian

Weichselian

Paleolithic

Medieval

Industrial

Modern

Pleistocene

Holocene



PUTTING PEN TO PAPER

PART IV

Design principles

Vision

Designs

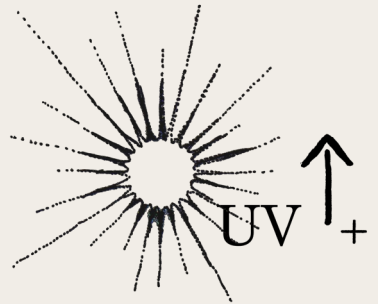
Habitat Based Restoration

Design Principles

Habitat Based Restoration



Management \downarrow $-$

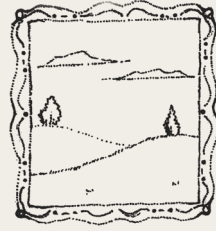


Biodiversity \uparrow $+$



Rewilding Basecamps

Design Principles



Landscape as a painting



Landscape as a classroom



Landscape as a laboratory



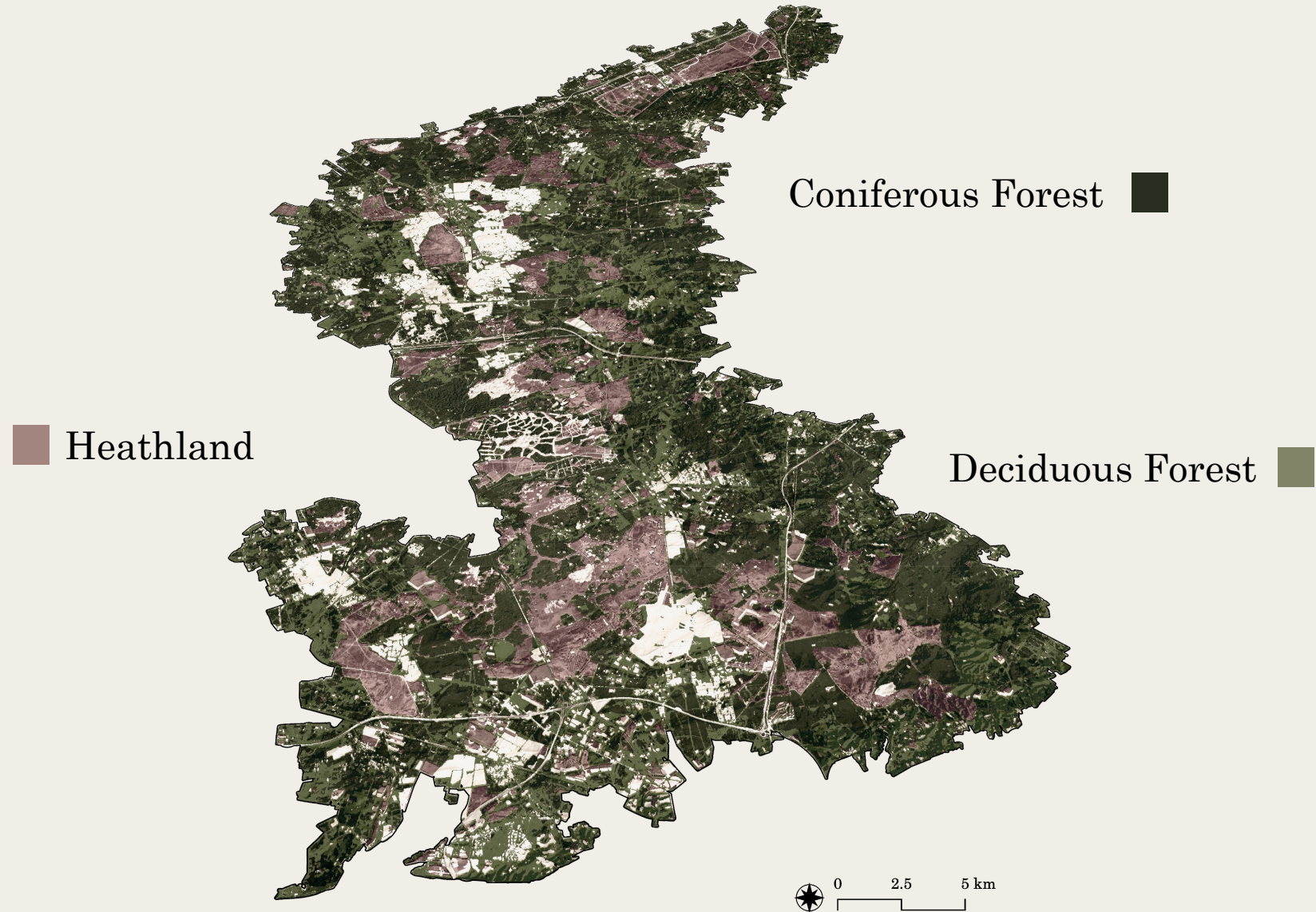
Landscape as a foundation



Landscape as a timepiece

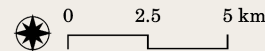
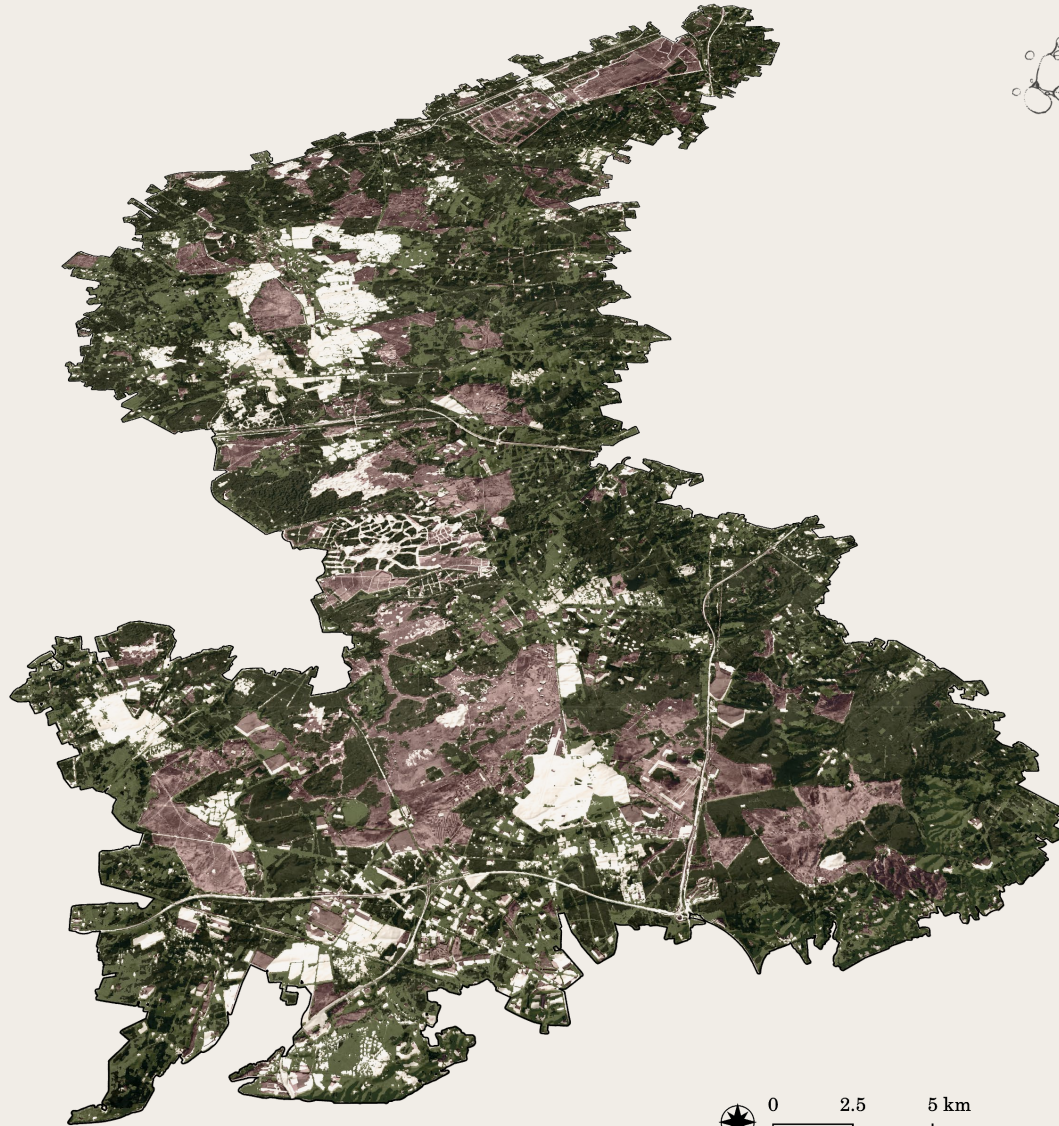
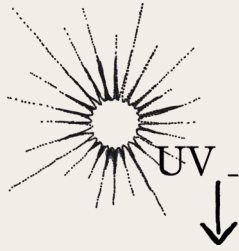
Present Day Veluwe

Habitats



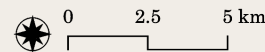
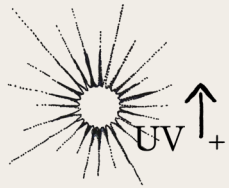
Present Day Veluwe

Habitats



Habitat Based Restoration

Vision



Rewilding Basecamps

Vision and Design Principles



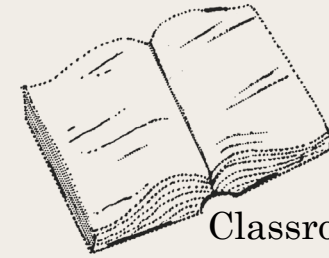
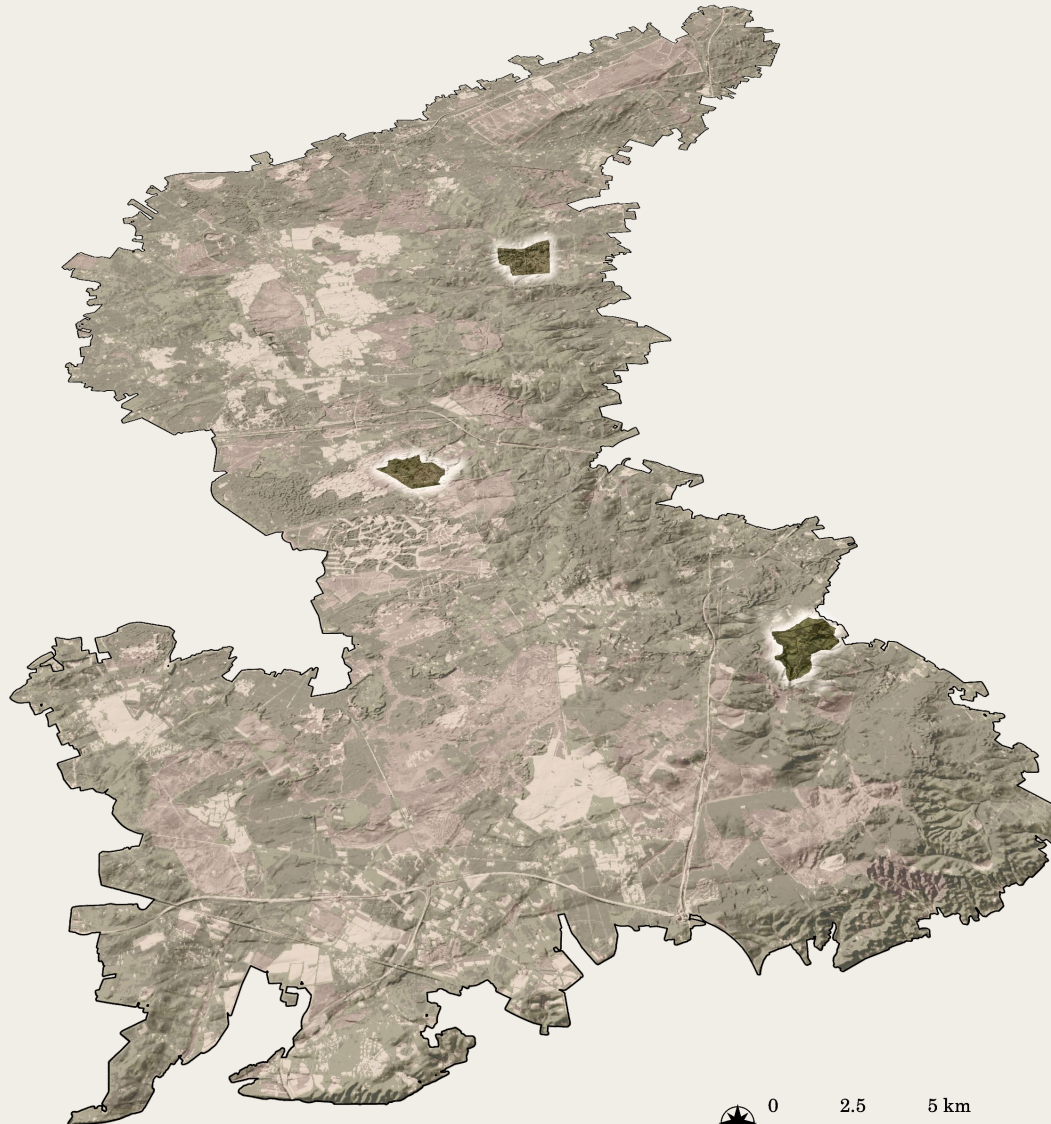
Painting



Laboratory



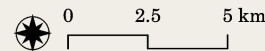
Timepiece



Classroom

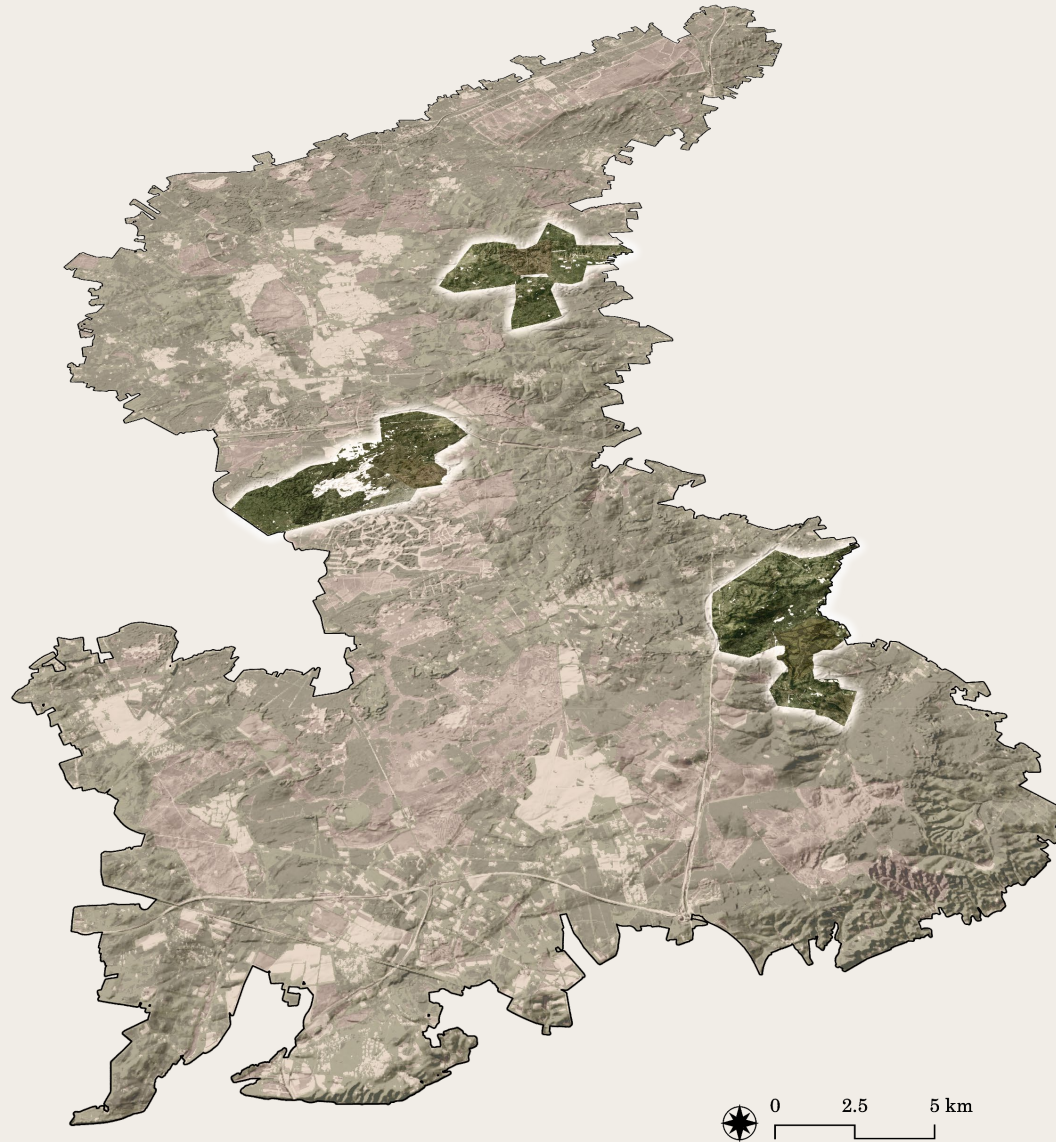


Foundation



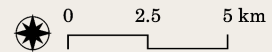
Vision Phasing

Vision



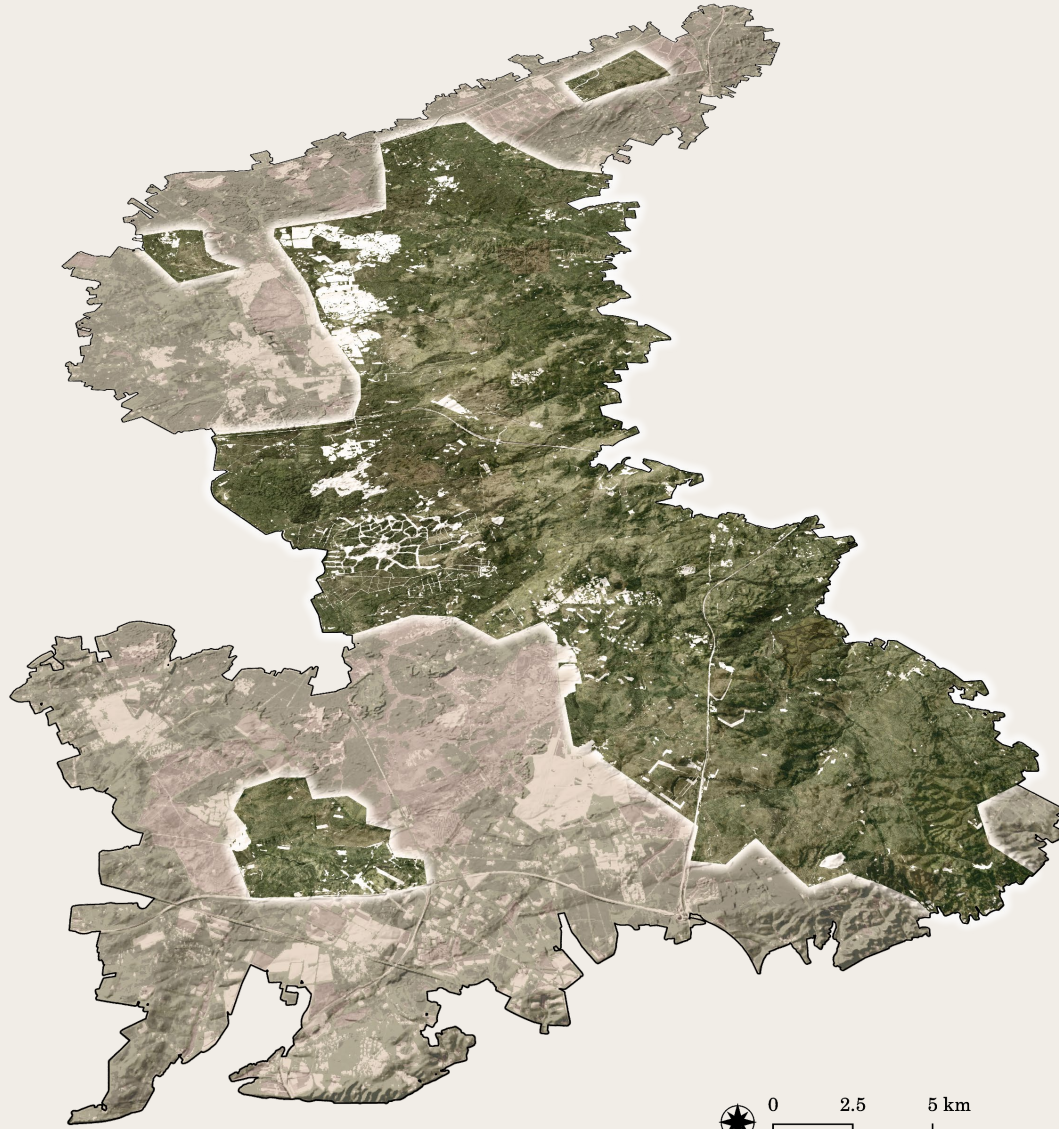
Vision Phasing

Vision



Vision Phasing

Vision



Vision Phasing

Vision



Vision Phasing

Vision



The New Team

Vision



Game wardens



Gardeners

Foresters



Landscape Vision

Vision



Landscape Vision

Vision

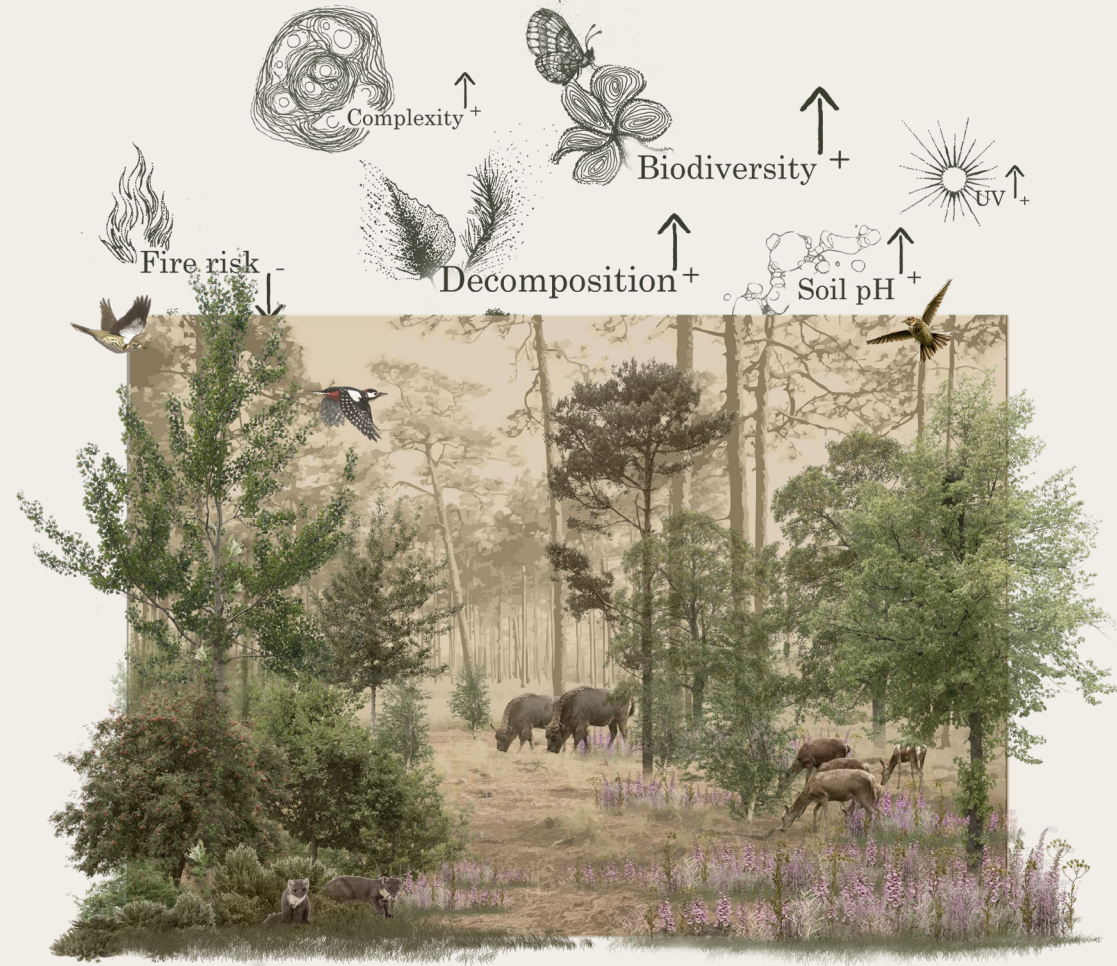


Coniferous Forest

Habitat Based Restoration

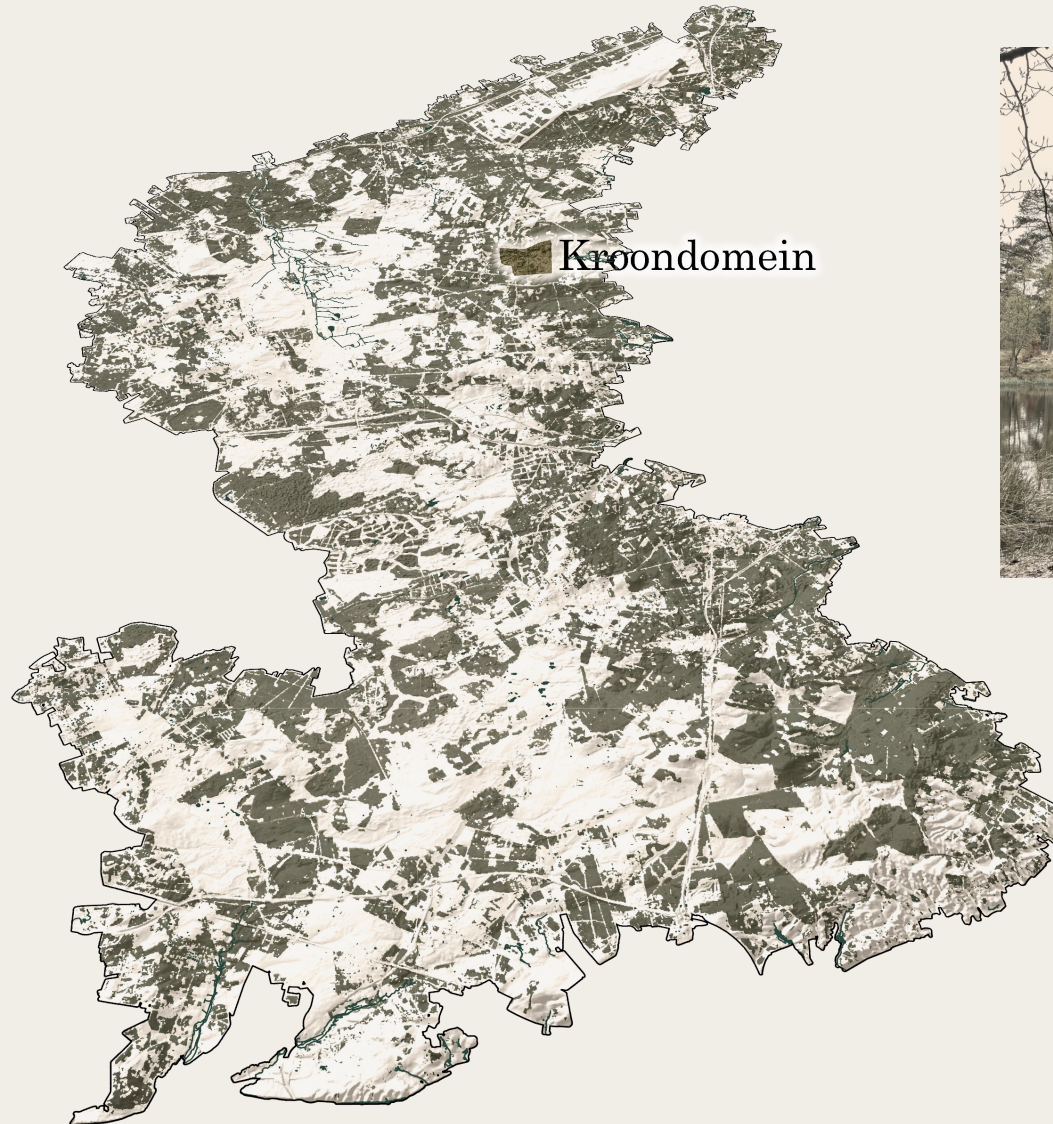
From Pine Plantation...

...to Mixed Woodland



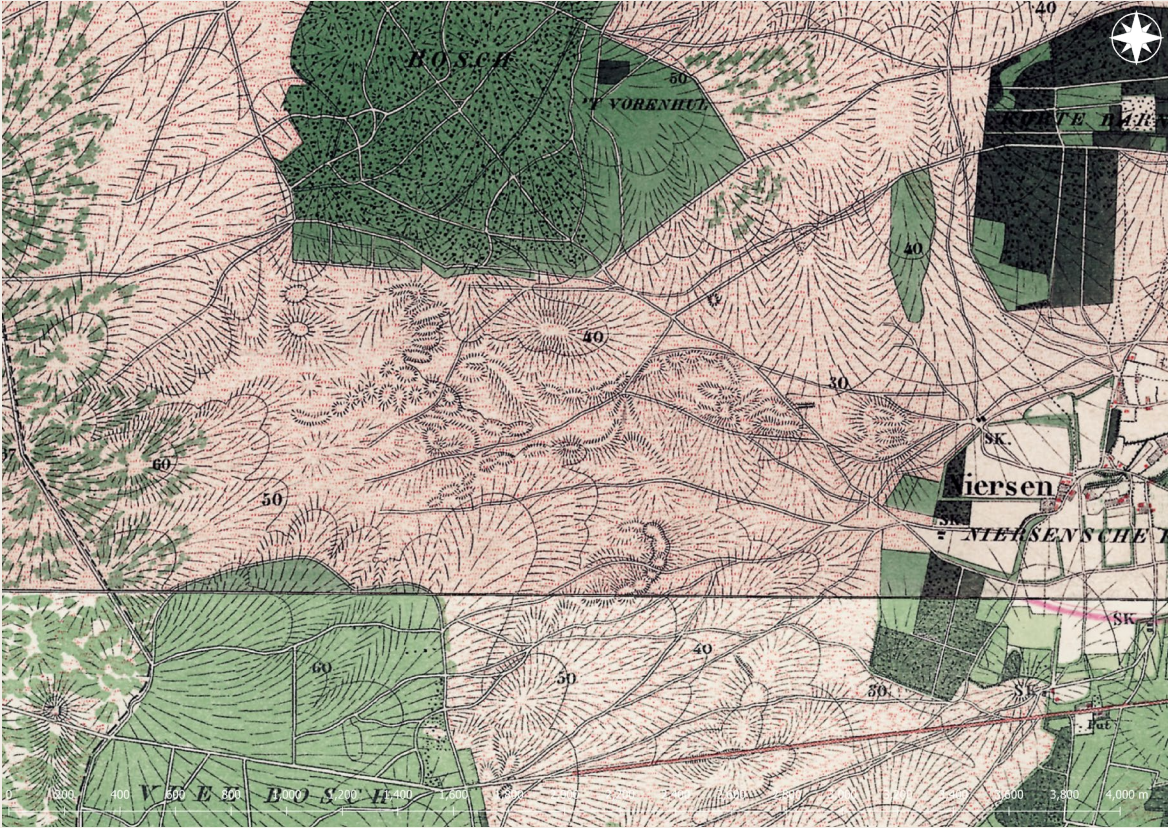
Design Location

Rewilding Basecamp

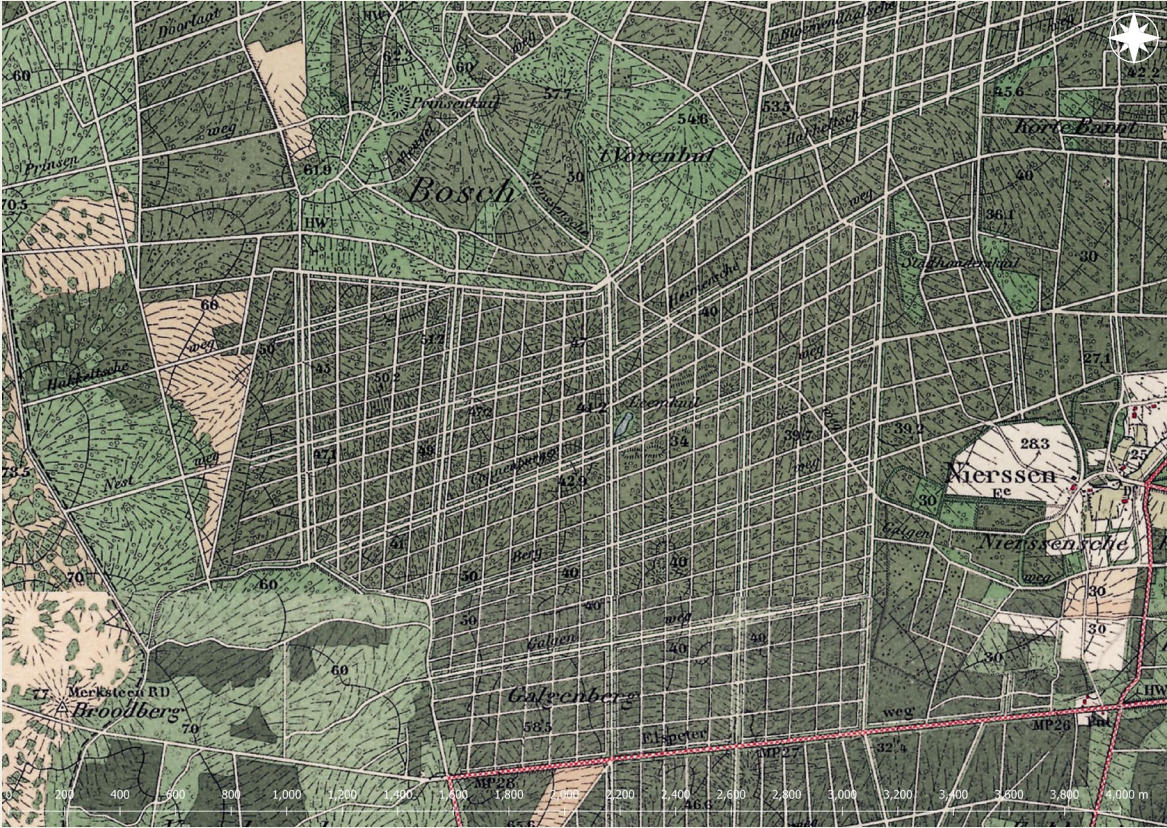


Kroondomein

Rewilding Basecamp



~ 1900



~ 1935



0 200 400 600 800 1,000 1,200 1,400 1,600 1,800 2,000 2,200 2,400 2,600 2,800 3,000 3,200 3,400 3,600 3,800 4,000 m



Legend:
Entrance ●
Fence ---

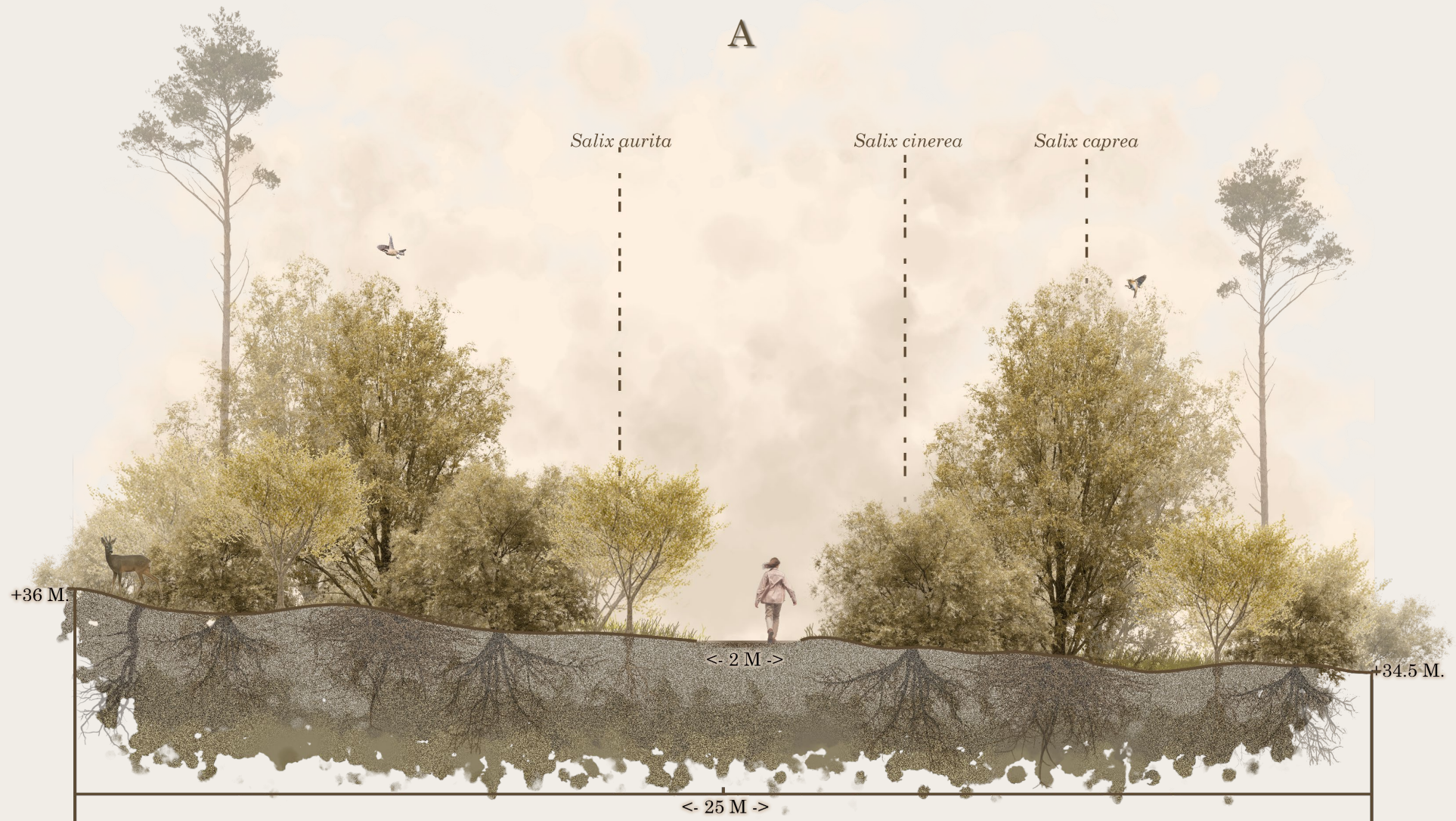






Kroondomein

Sections



Kroondomein

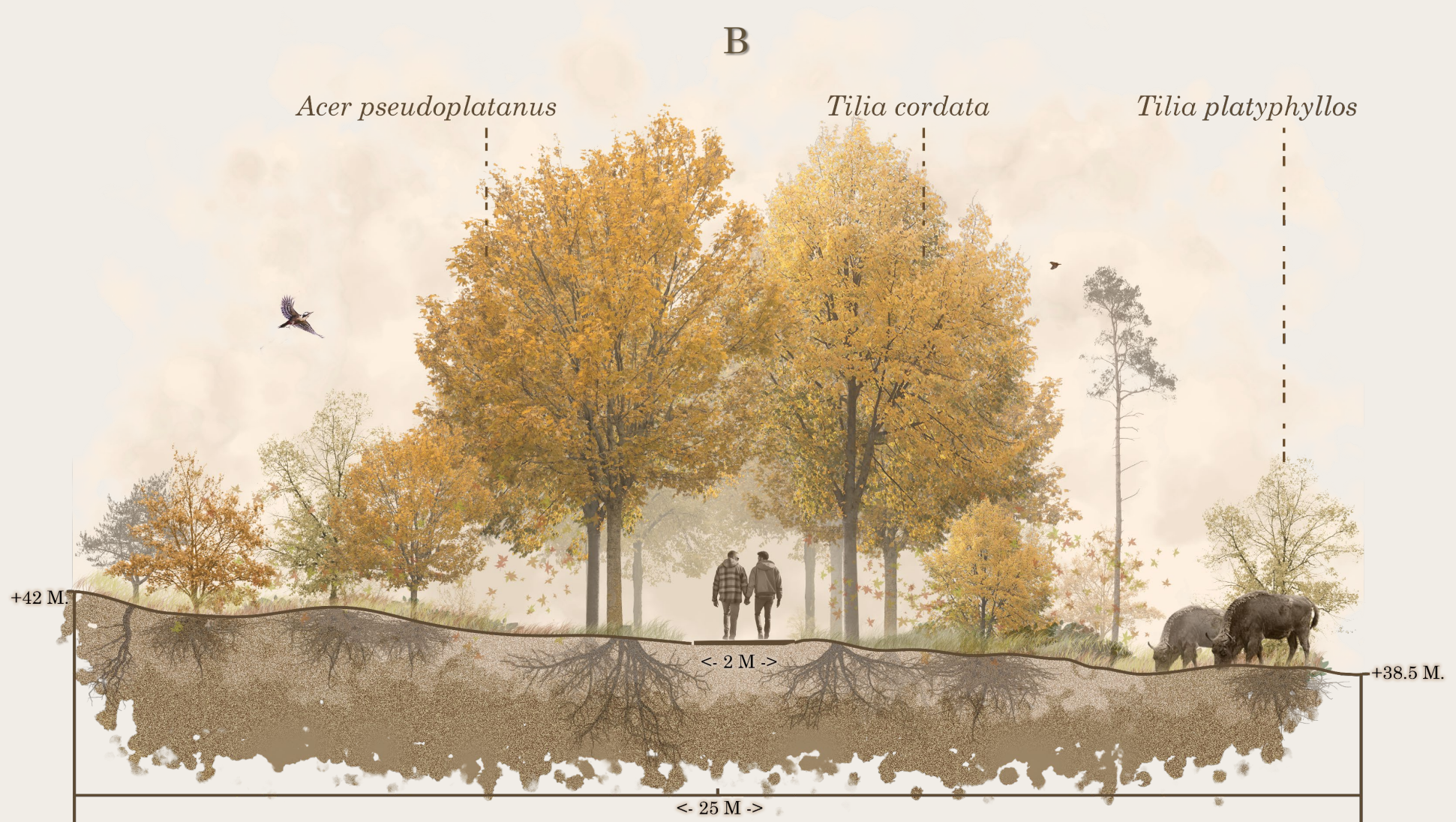
Rewilding Basecamp

B

Acer pseudoplatanus

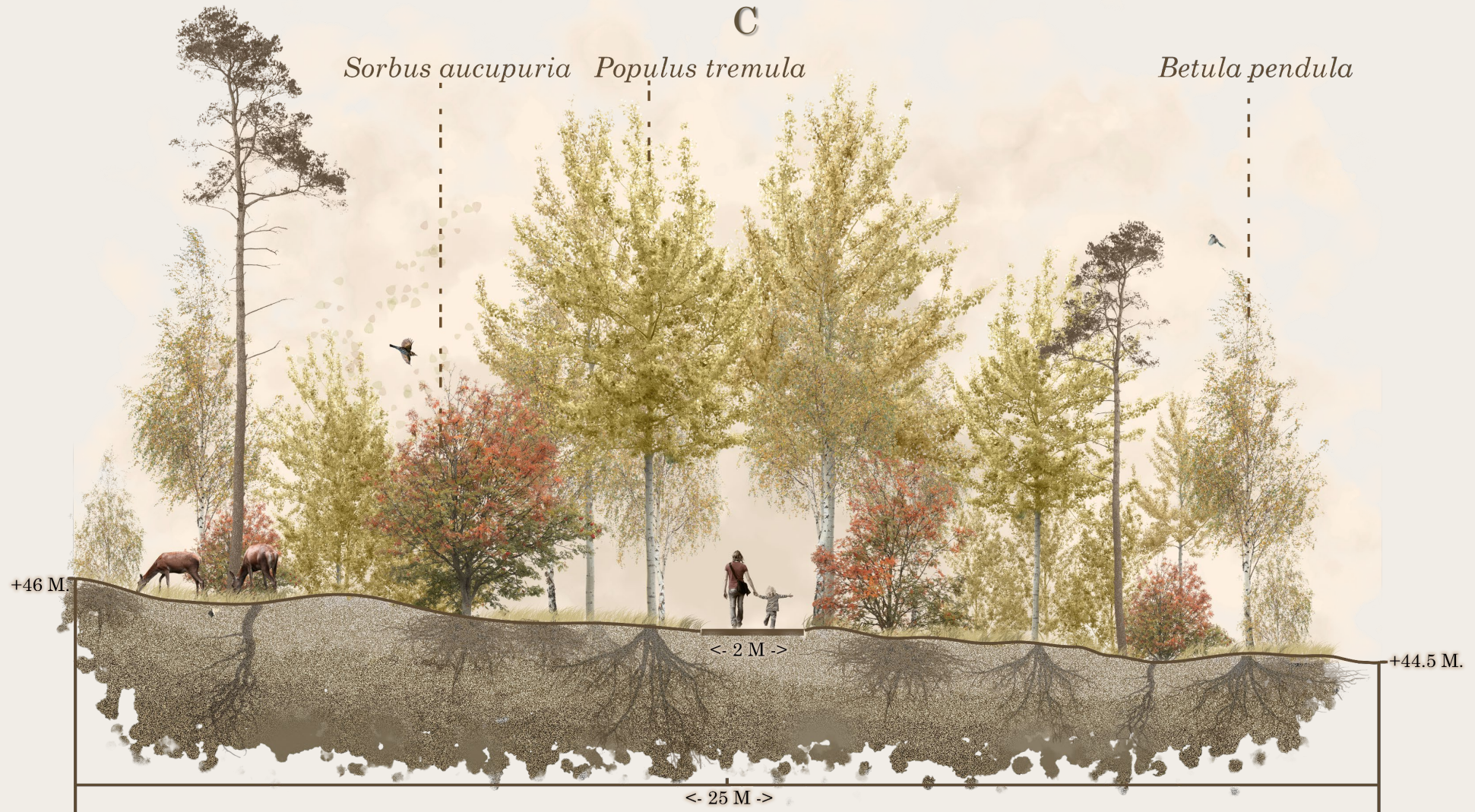
Tilia cordata

Tilia platyphyllos



Kroondomein

Sections



Deciduous Forest

Habitat Based Restoration

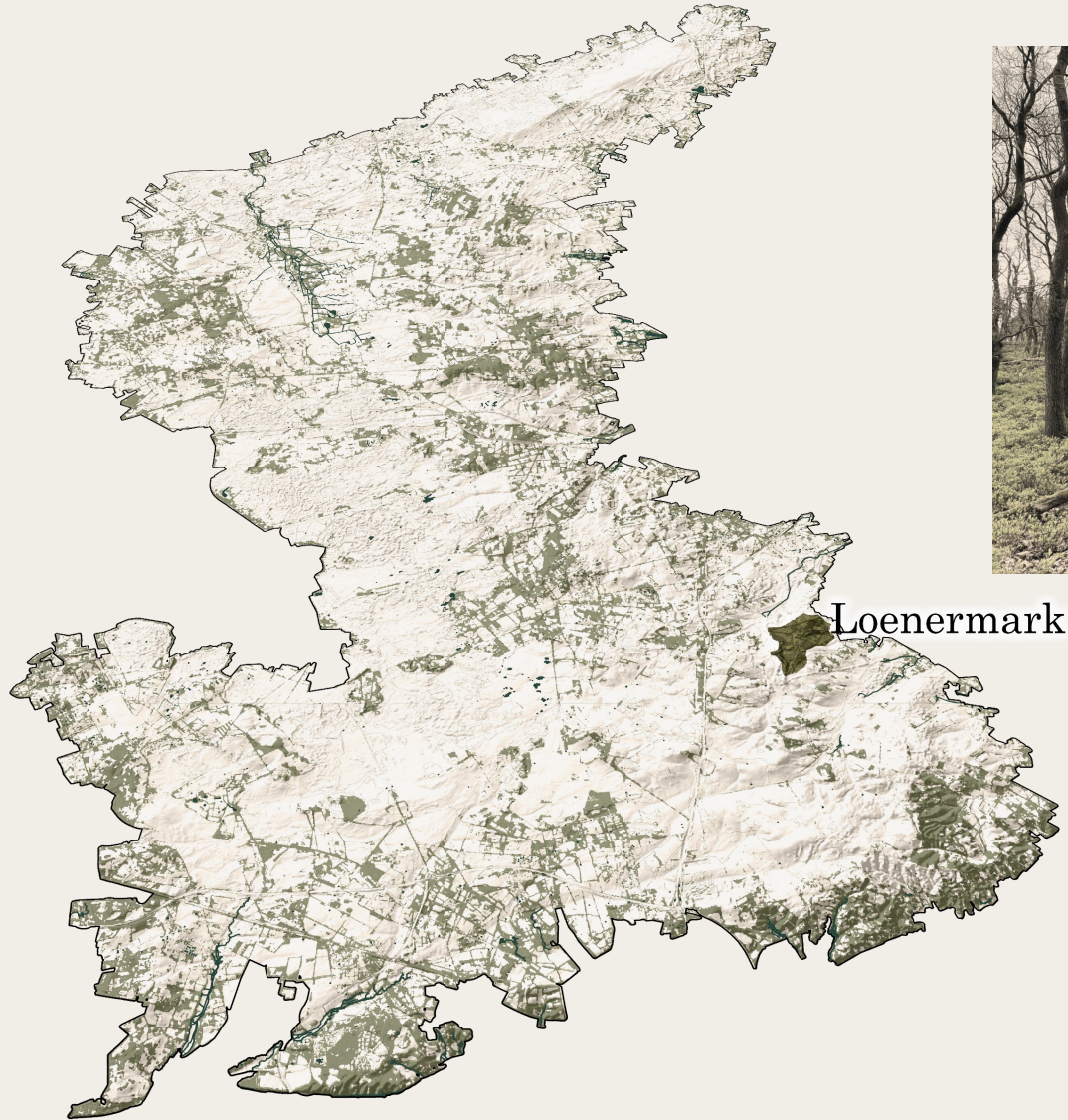
From Malenbos...

...to Woodland-Pasture



Design Location

Rewilding Basecamp



Kroondomein

Rewilding Basecamp



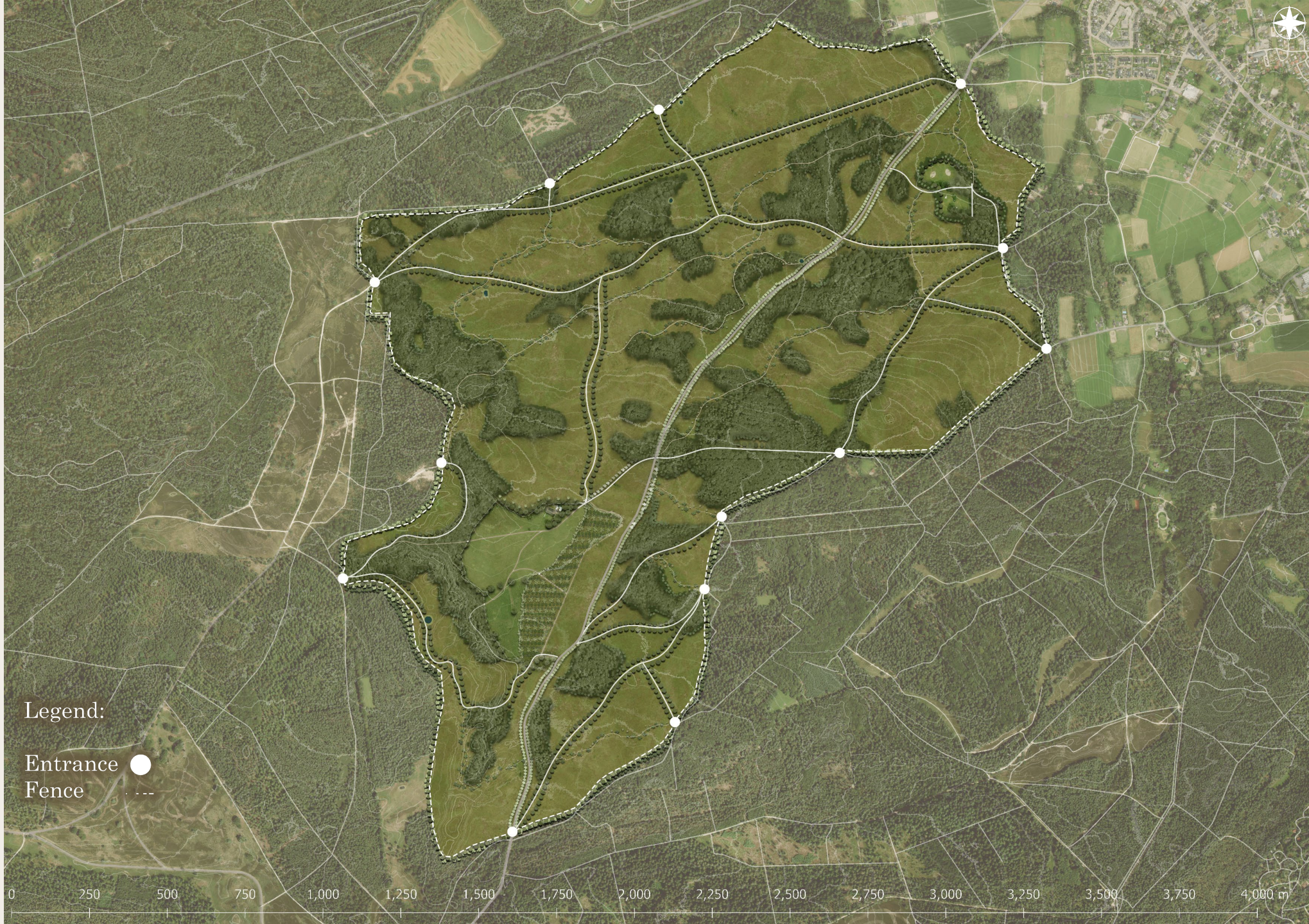
~ 1900

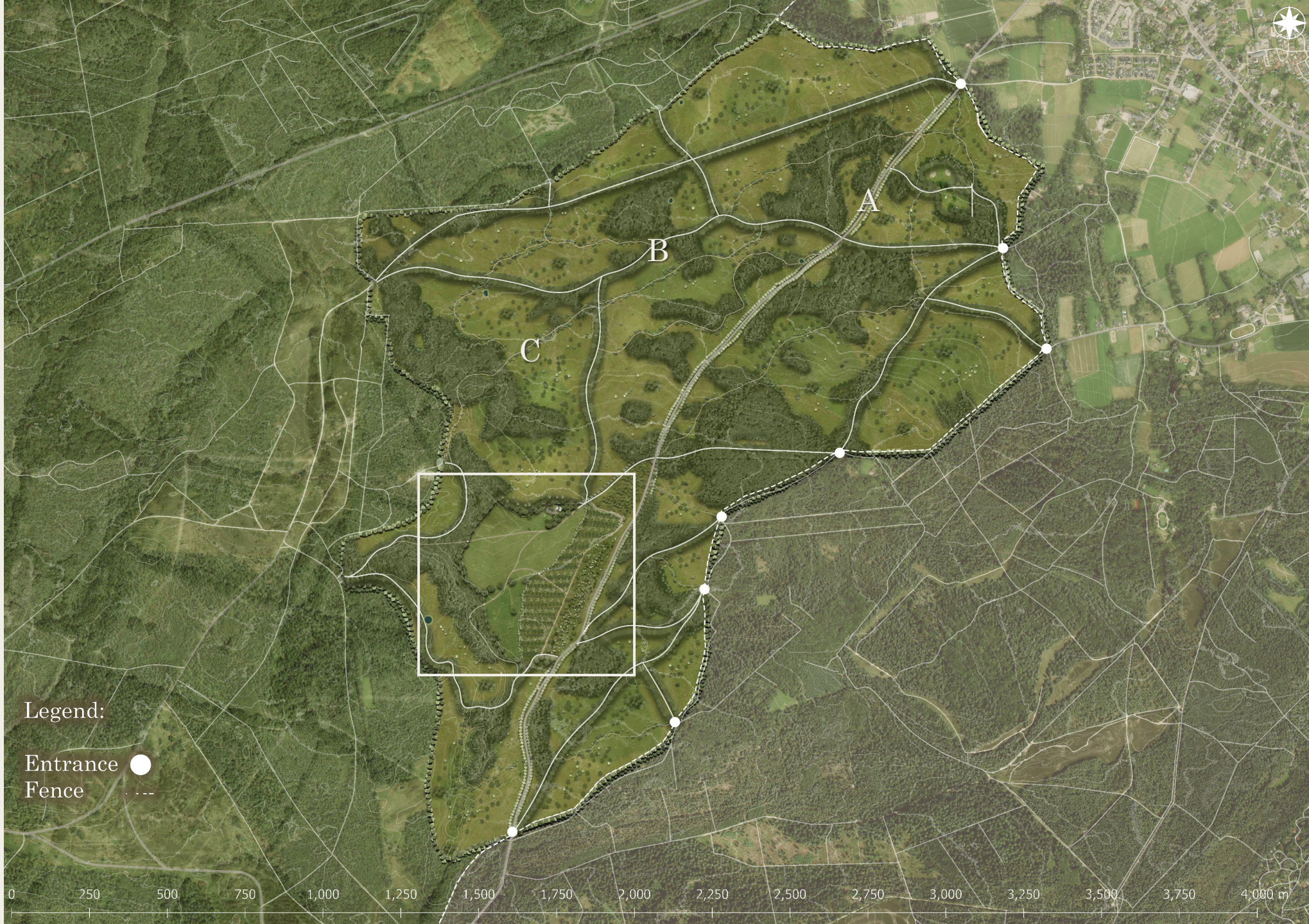


~ 1935



0 250 500 750 1,000 1,250 1,500 1,750 2,000 2,250 2,500 2,750 3,000 3,250 3,500 3,750 4,000 m





Legend:

Entrance ●
Fence - - -

0 250 500 750 1,000 1,250 1,500 1,750 2,000 2,250 2,500 2,750 3,000 3,250 3,500 3,750 4,000 m



Legend:

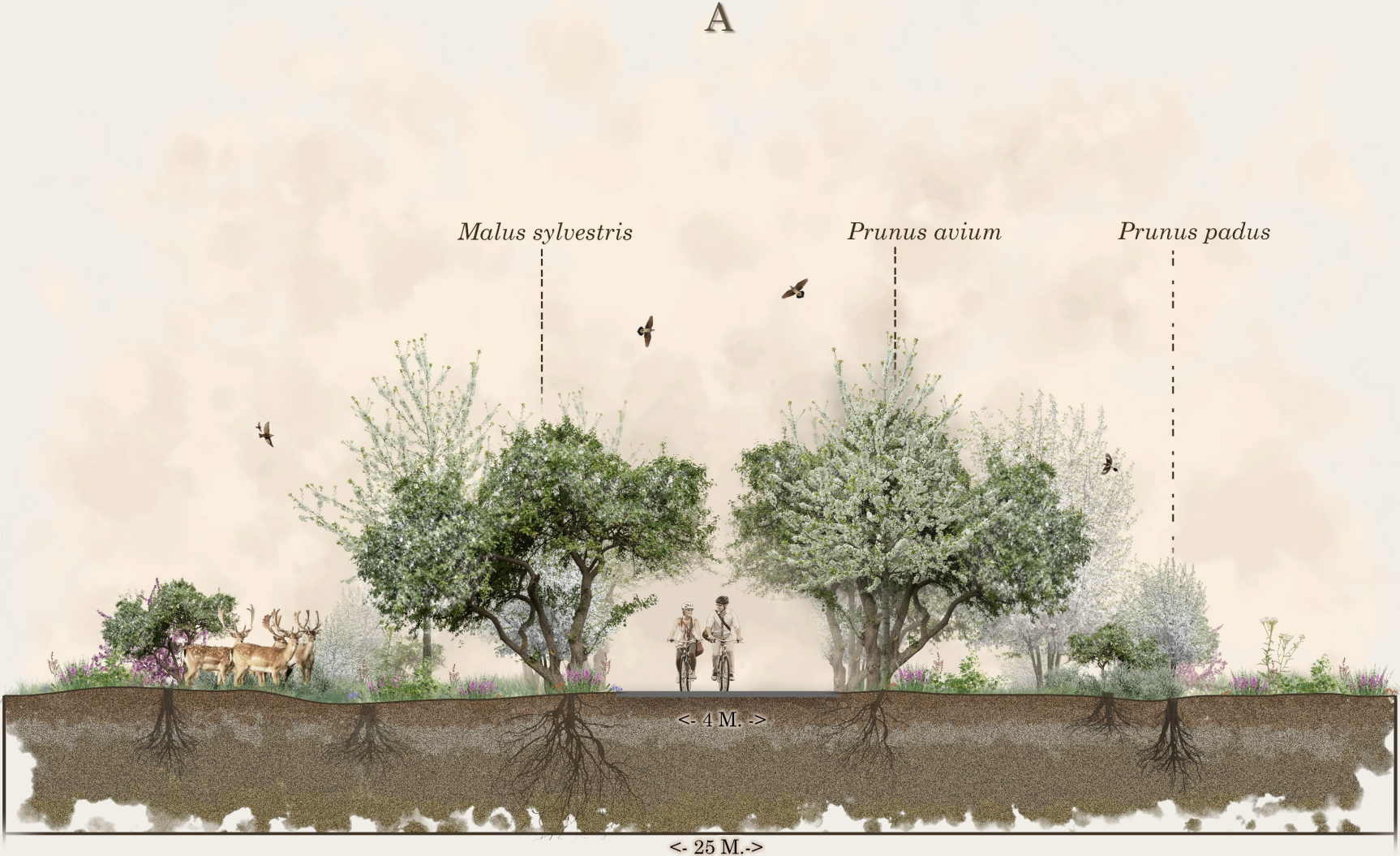
Entrance ●
Fence - - -

0 75 150 225 300 375 450 525 600 675 750 m

Loenermark

Sections

A



Loenermark

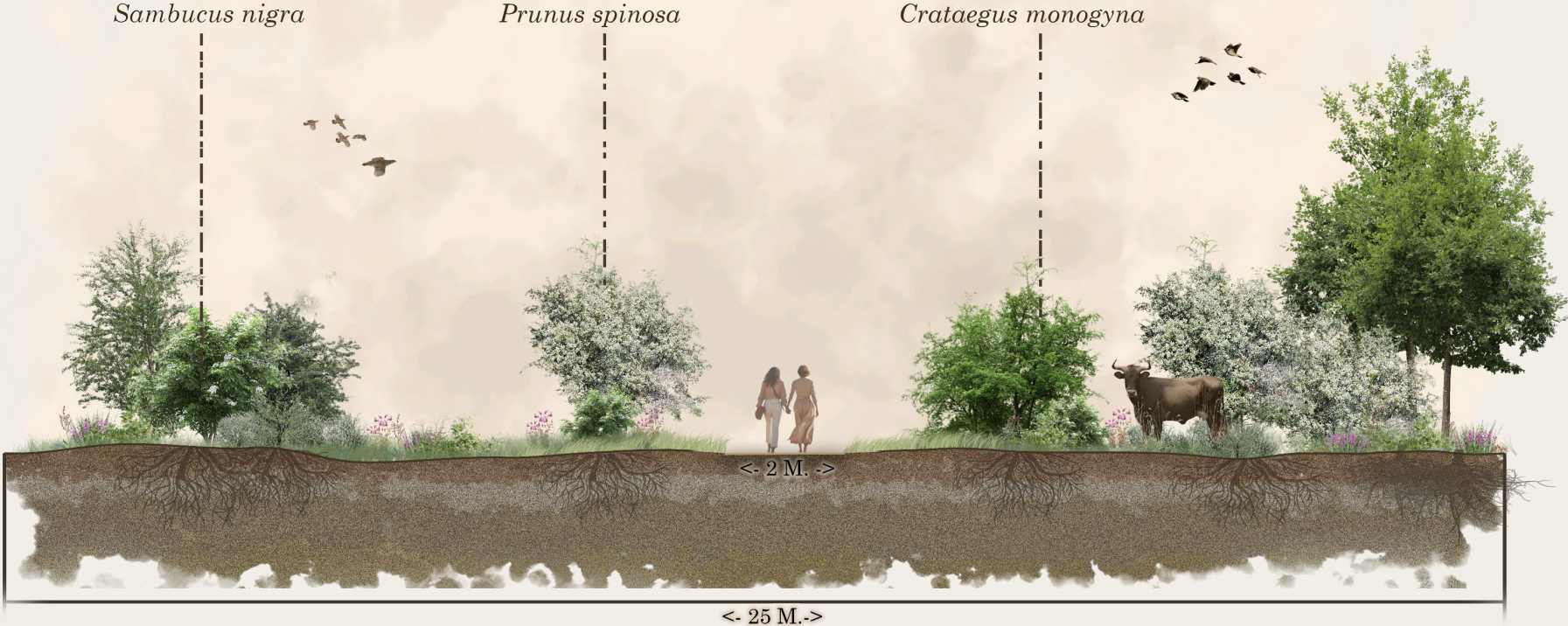
Sections



Loenermark

Sections

C



From Abandoned Pasture...

Heathlands

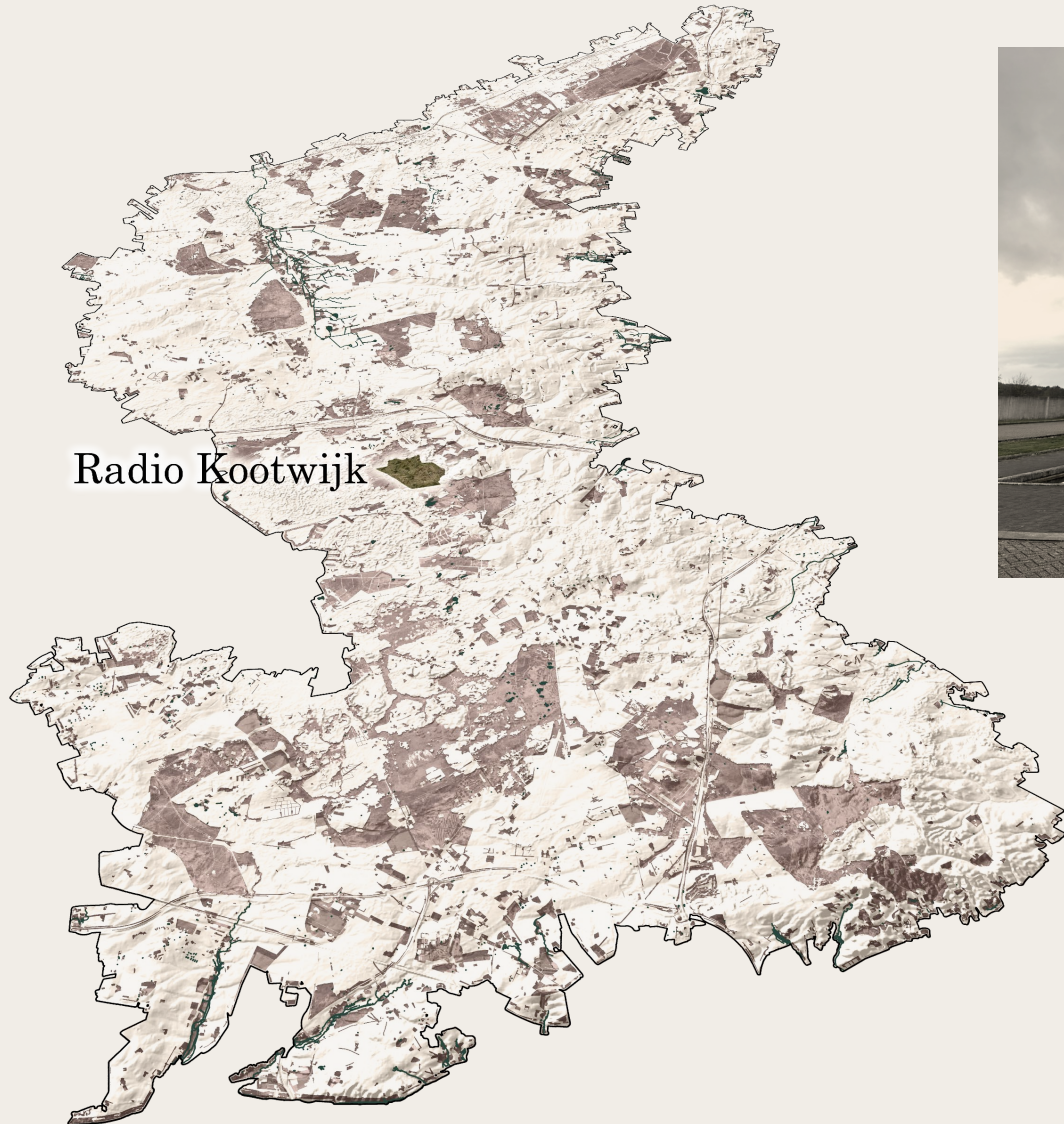
Habitat Based Restoration

...to Juniper Shrubland



Design Location

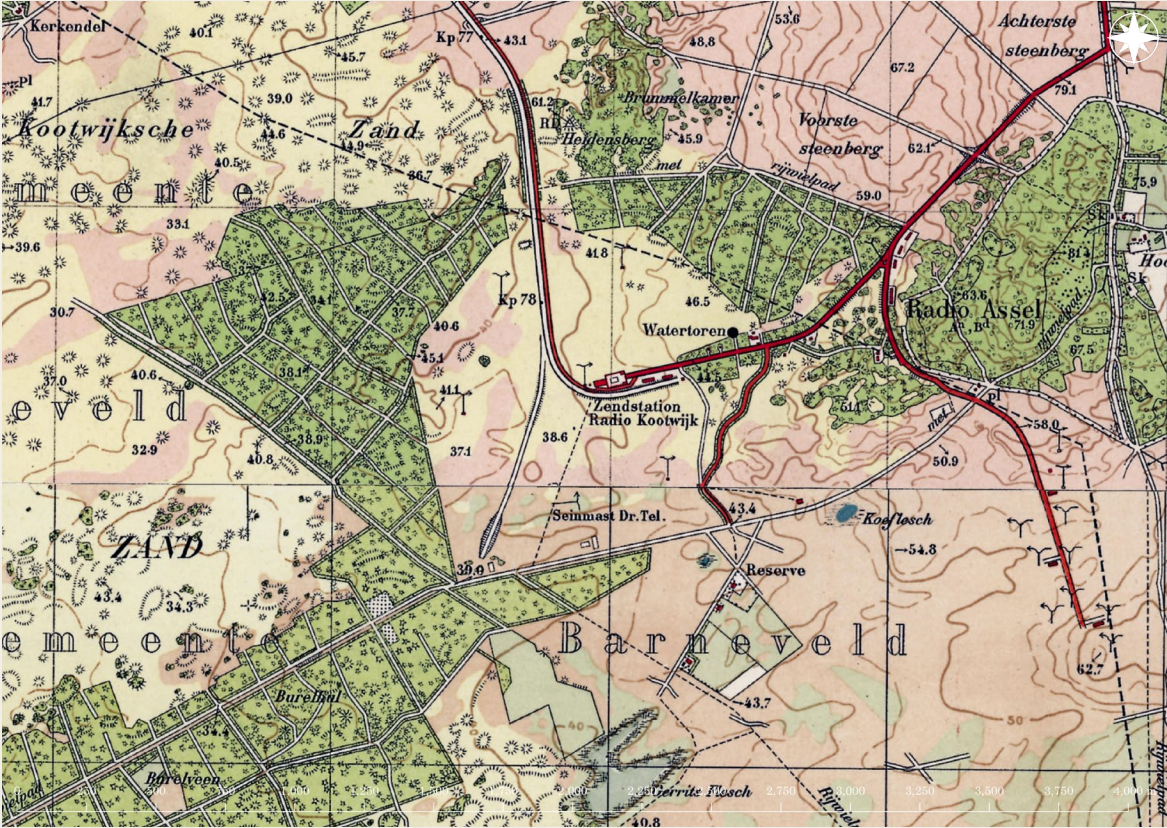
Rewilding Basecamp



Kroondomein *Rewilding Basecamp*



~ 1900



~ 1935





0 250 500 750 1,000 1,250 1,500 1,750 2,000 2,250 2,500 2,750 3,000 3,250 3,500 3,750 4,000 m

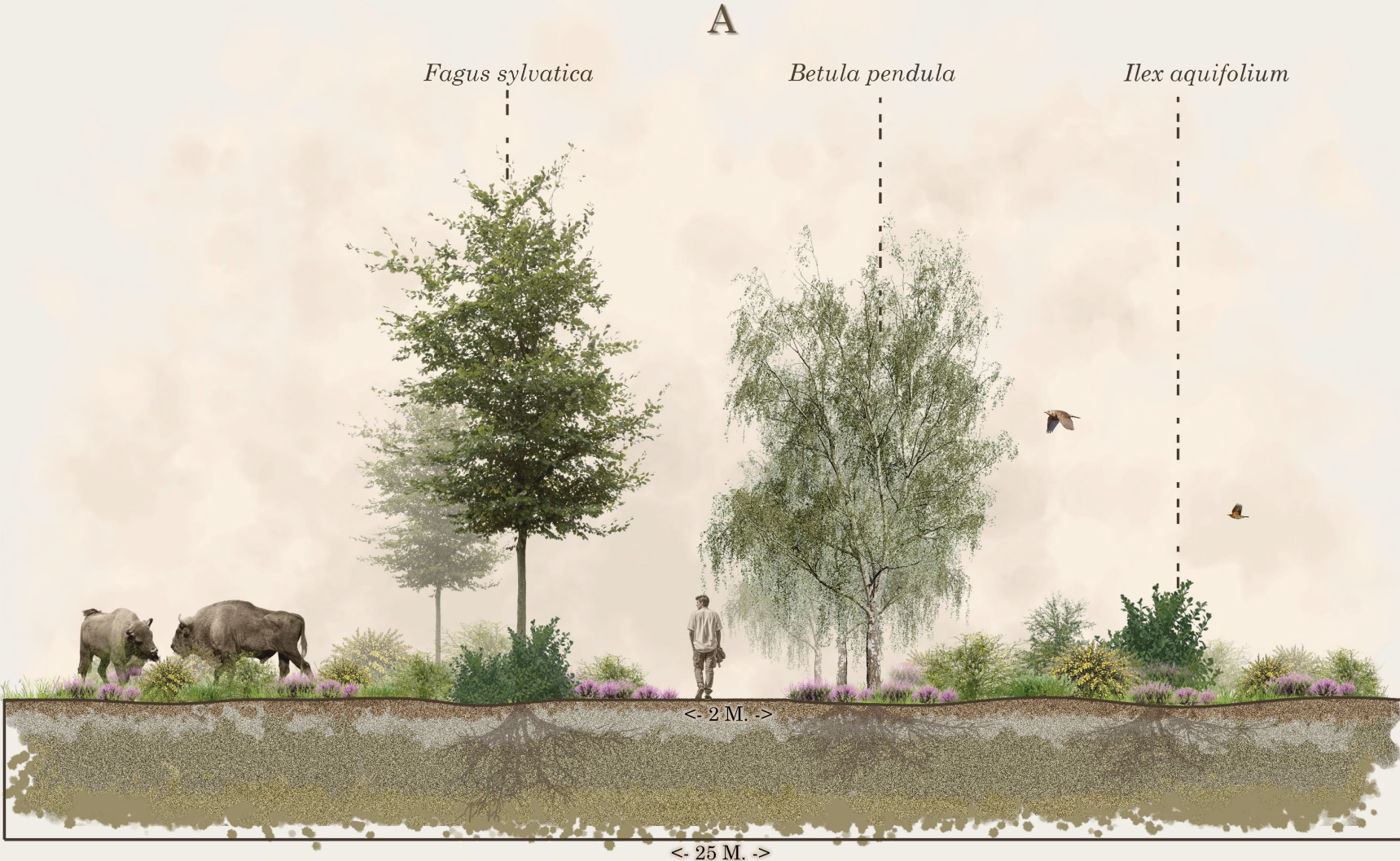


0 250 500 750 1,000 1,250 1,500 1,750 2,000 2,250 2,500 2,750 3,000 3,250 3,500 3,750 4,000 m



Radio Kootwijk

Sections



Radio Kootwijk

Rewilding Basecamp

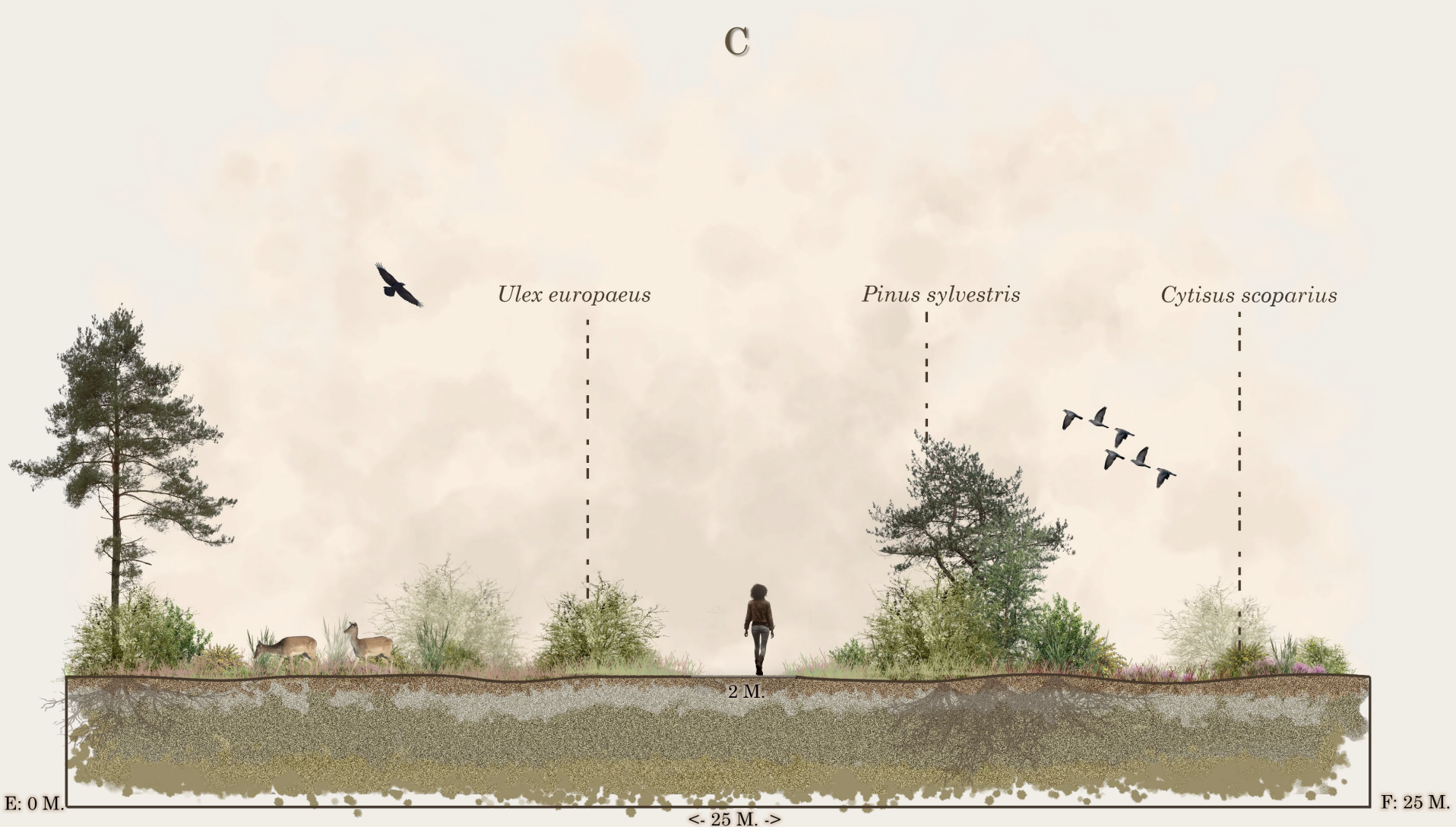
B



Radio Kootwijk

Rewilding Basecamp

C





A POINT ON THE HORIZON

PART V

Conclusion

Reflection

Reflection

Conclusion and Reflection

“The strength of a design can be found in its variety of theoretical underpinnings, and the design decisions made to bring this theory forward.”

What makes landscape architecture so powerful is that it can take these disciplines in stride, and incorporate them into meaningful designs”





FALLOW

A vision of a wilder future for the Veluwe