



a matter of time

## *contact*

Floor van der Vliet  
Hogerbeetsstraat 9B  
3039 XG Rotterdam  
tel | +31 6 55731055

**Delft University of Technology** Master of  
Architecture and Building Sciences Track  
Architecture

June 2026

### **Supervisors:**

Roel van de Pas  
Saskia de Wit

# a matter of time

*A FIELDGUIDE*



## *dear explorer,*

You are about to set on an adventure. Tie your shoelaces, grab your keys, some pencils and don't forget to take me. We are going on a fieldtrip. The goal of this trip? To see that our cities and buildings are landscapes as well. Maybe not the kind you imagine immediately, but they act in similar ways. The city is filled with life. If you observe and be still, the life will happen in front of your eyes. Take it all in. Listen to the sounds around you. Experience the passage time. Time materializes. Materials weather and decay, but also make space for growth. This materializing of time is what we will observe. This fieldguide is supposed to be used and supposed to grow. Add new findings, samples or traces of time. And hopefully after some time you will see, buildings and landscapes can be treated similarly.





◀ *Climbing plant on brick wall. Photo by author.*



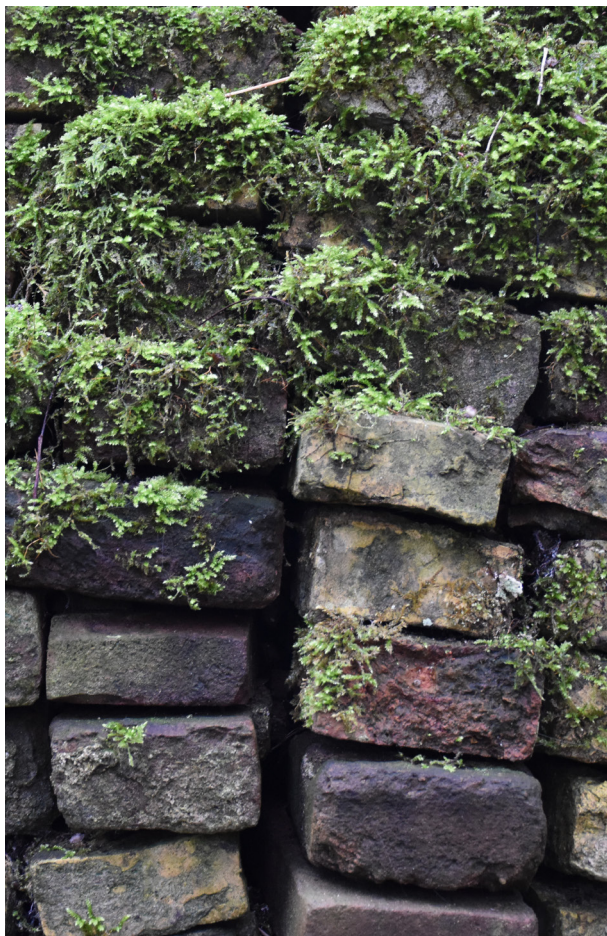
◀ *Grass growth from cracks of the pavement. Photo by author.*



◀ *Vegetation growing on and in between the rocks. Photo by author.*



◀ *Overgrown blue bathtub. Photo by Mo Michelsen Krag*



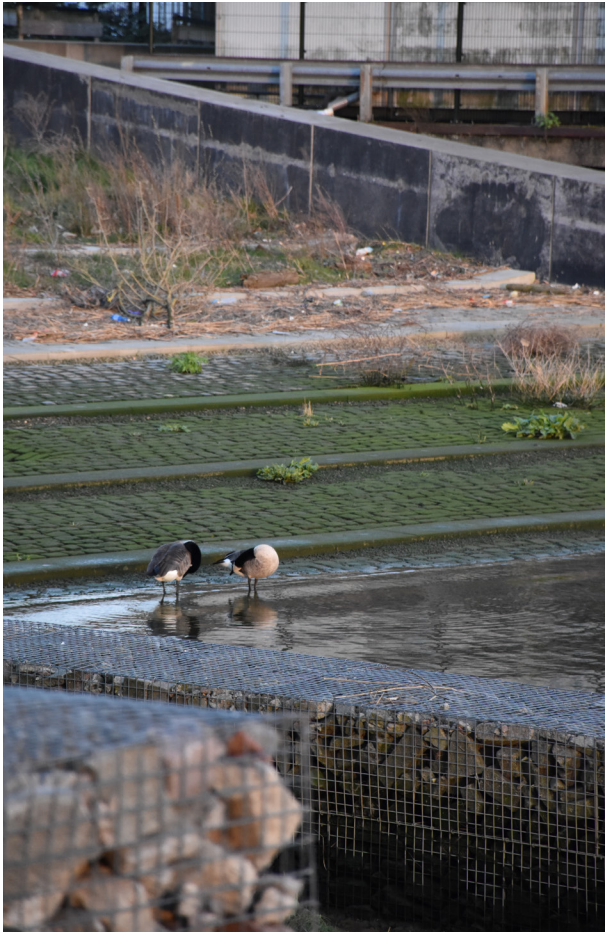
◀ *Moss on stacked bricks. Photo by author.*



◀ *Climbing plant on a stone structure and a tree. Photo by author.*



◀ *Algae on concrete wall. Photo by author.*



◀ *Algae on tidal riverbank. Photo by author.*



◀ *Moss on stacked tiles. Photo by author.*



◀ *Fungal growth from a cut down tree. Photo by author.*



◀ *Fungi in tree. Photo by author.*



◀ *Moss on tree bark. Photo by author.*



◀ *Tree growing out of brick structure. Photo by author.*



◀ *Vegetation growing from bags of debris. Photo by author.*



◀ *Overgrown greenhouse. Photo by Brenda Roelse.*



◀ *Moss growth on brick structure and trees. Photo by author.*



◀ *Algae and moss on concrete tidal riverbank. Photo by author.*



◀ *Moss growing on a brick windowsill. Photo by author.*



◀ *Grass growing through metal mesh stairs. Photo by author.*



◀ *Fungi on cut down tree. Photo by author.*



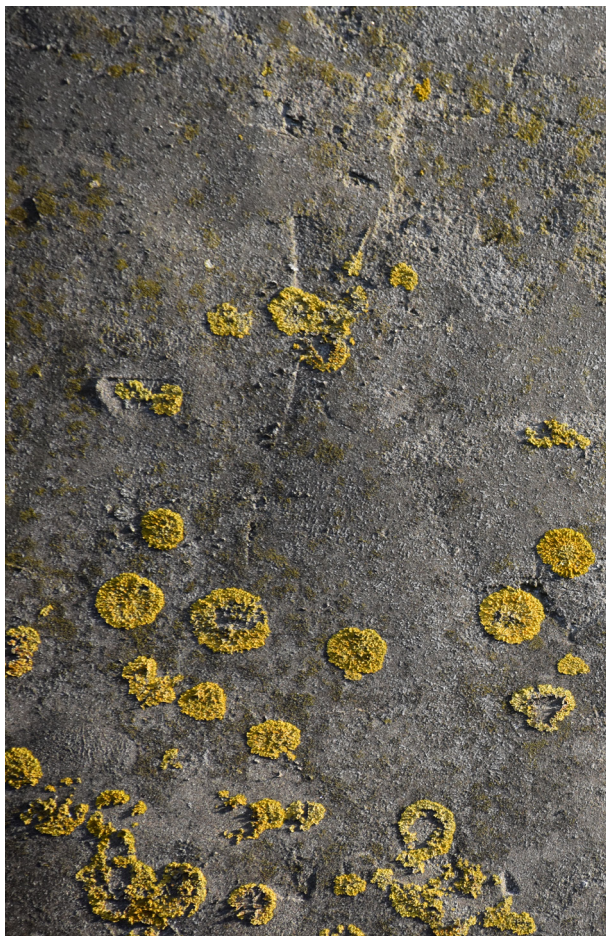
◀ *Lichen on rough concrete wall. Photo by author.*



◀ *Lichen on brick window sill. Photo by author.*



◀ *Lichen on stones. Photo by Tanne Brouwer.*



◀ *Lichen on concrete wall. Photo by author.*



◀ *Lichen on concrete road barrier. Photo by author.*







◀ *Water stains on concrete facade. Photo by author.*



◀ *Mineral deposits on concrete structure. Photo by author.*



◀ *Salt deposits on concrete block. Photo by author.*



◀ *Iron deposits on dam. Photo by Tom Vooren.*



◀ *Mineral deposits on brick wall. Photo by author.*



◀ *Mineral deposits on sculpture by Claire Tabouret. Photo by author.*



◀ *Water stains from a previous leak. Photo by author.*



◀ *Weathering of facade. Photo by Tom Vooren.*



◀ *Salt deposits on paperclip and thread. Photo by author.*



◀ *Salt blocks from Dissolving Arch by stpmj. Photo by stpmj.*



◀ *Water stains from drops on stove by Marina Abramovic. Photo by author.*



◀ *Crystallization on glass. Photo by author.*



◀ *Patterns from water on sand. Photo by author.*



◀ *Overgrown abandoned structure filled with rainwater. Photo by author.*







◀ *Crumbled concrete from Jericho by Anselm Kiefer. Photo by author.*



◀ *Traces of removed floor. Photo by author.*



◀ *Wa Pan wall of Ningbo History Museum by Wang Shu. Photo by Tom Vooren.*



◀ *Various brick types in facade. Photo by author.*



◀ *Spolia used for facade of Plecnik House. Photo by author.*



◀ *Traces of former neighbouring building on concrete wall at Keileweg*  
*Photo by author,*



◀ *Material layers at metro station in Amsterdam. Photo by author.*



◀ *Tree rings visible after cutting down. Photo by author.*



◀ *Algae on layers of concrete and brick. Photo by author*





## *epilogue*

While this fieldguide was made during my graduation process as a side quest, it is supposed to continue to grow after my studies as well. My view on the materialisation of time is captured in multiple ways throughout this booklet. It includes projects that have inspired me, places that I have accidentally stumbled across during my walks and bike rides, and experiments that I have done myself.

The selection shows the similarities of the effects of time on material level between buildings and landscapes. And proposes a gaze that does not automatically think of material 'decay', but one that sees growth. The selection is mixed and scattered to allow for the fieldguide to be used and grow.

I hope this fieldguide finds the ones dreaming of a world where time is not just about the lack of it, but about appreciating the moment, whether it comes with quick changes or ongoing slowness. Even more, I hope that this fieldguide shows that the passage of time is not something that only should be considered as an essential part of designing with landscapes, but also of the design of buildings. Because we can treat buildings as dynamic landscapes. We can embrace the passage of time.

