



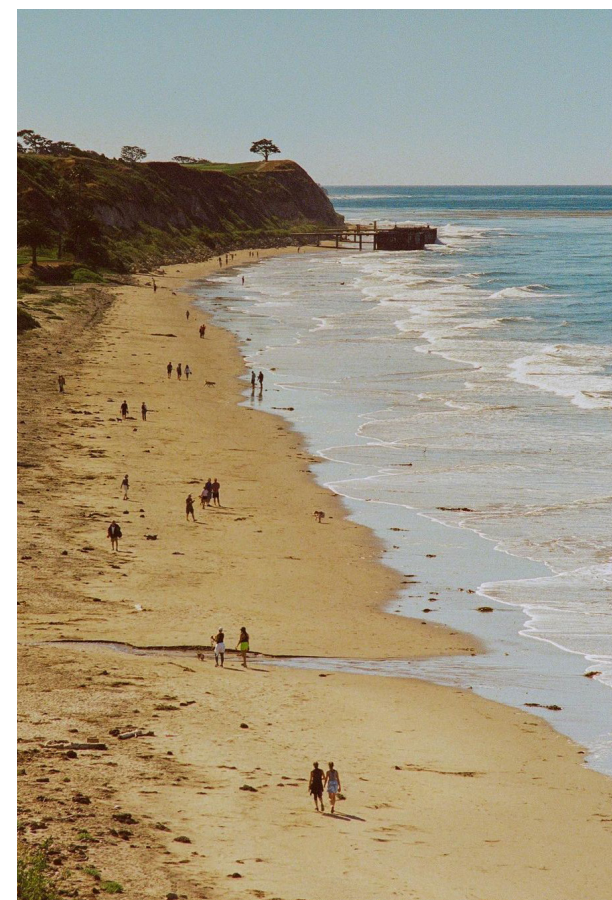
Public space inbetween fabriken and public condenser



The public space in front of the foodcorner



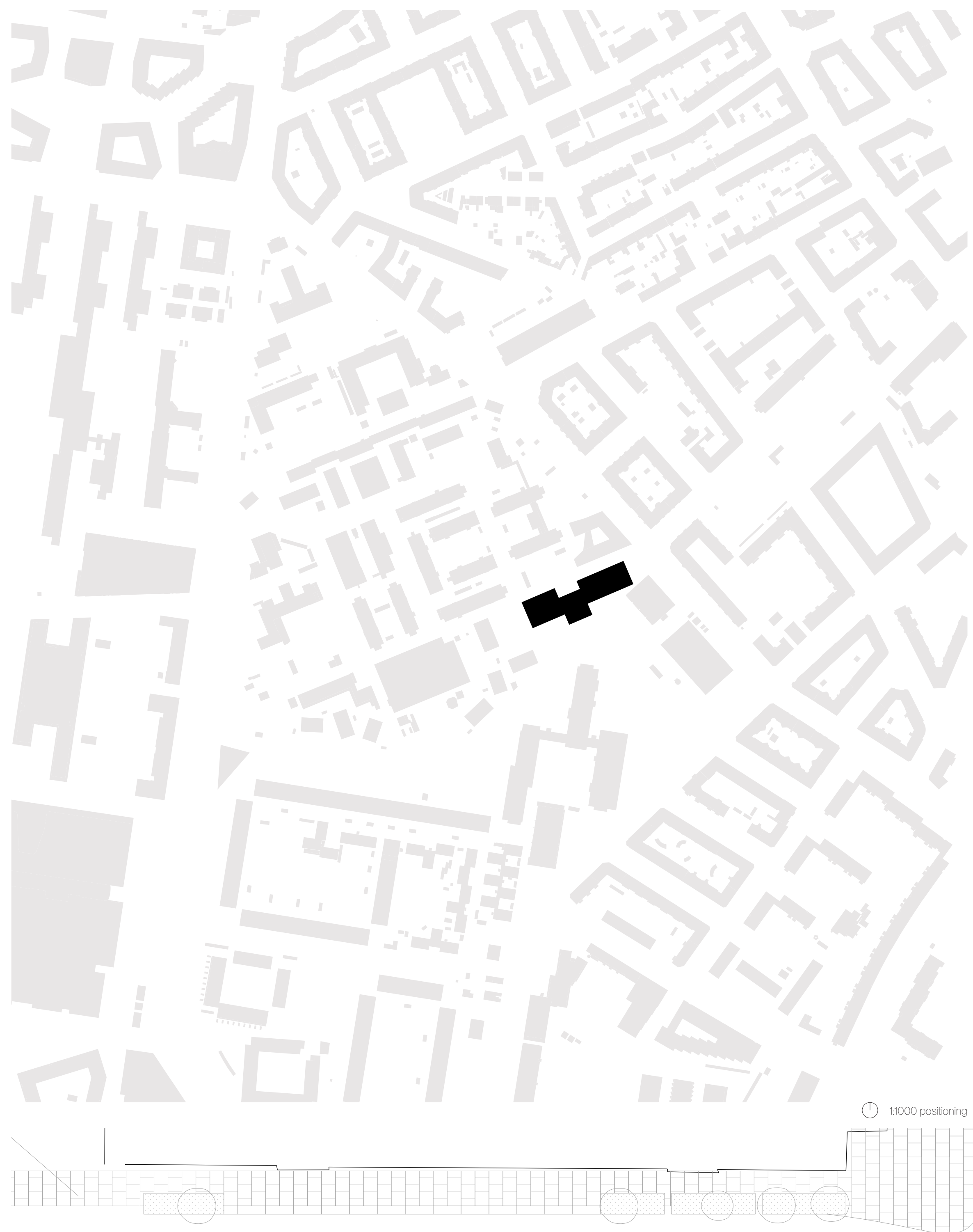
The spectacular everyday



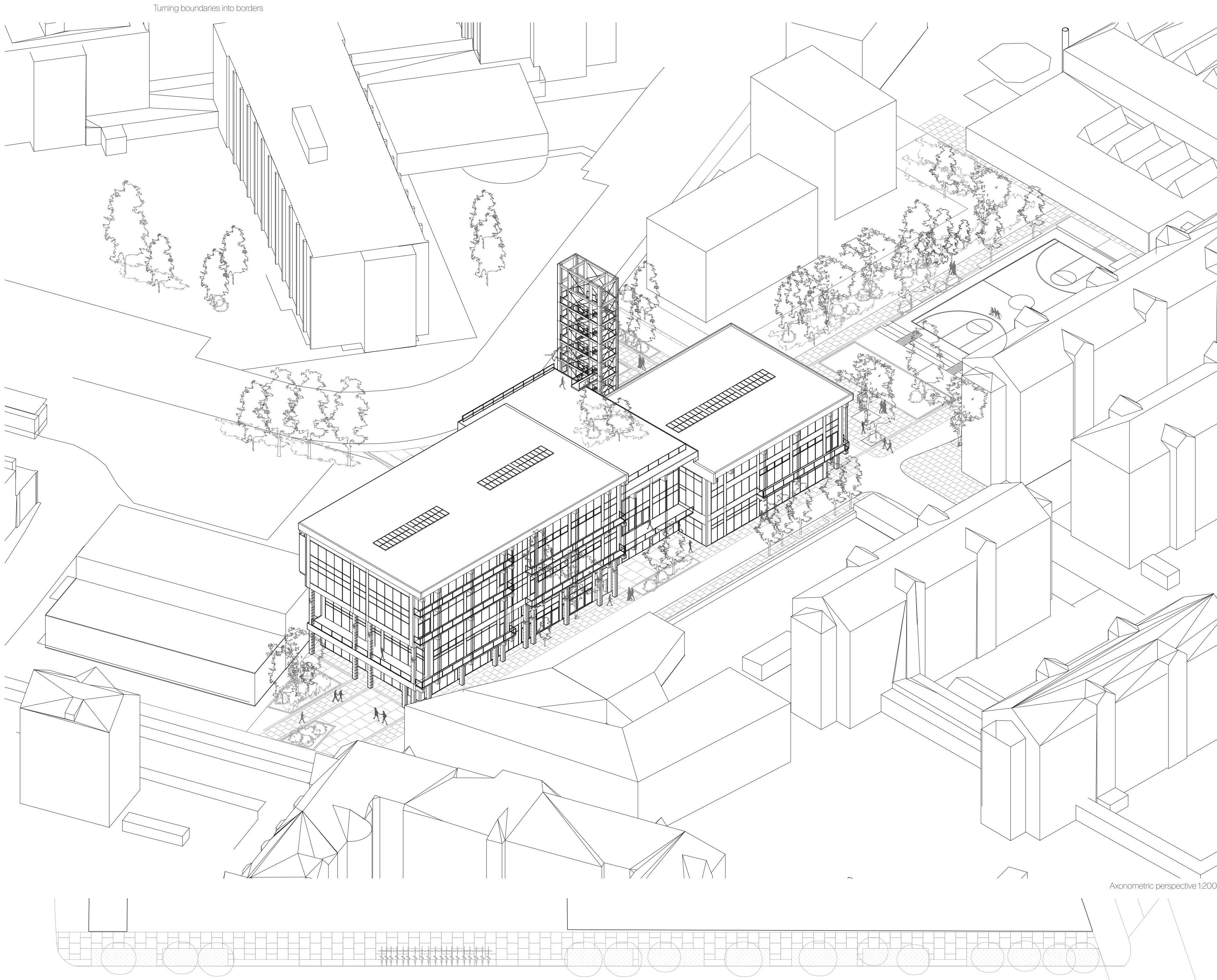
From exhaustion To resilience

Re-imagining the possible

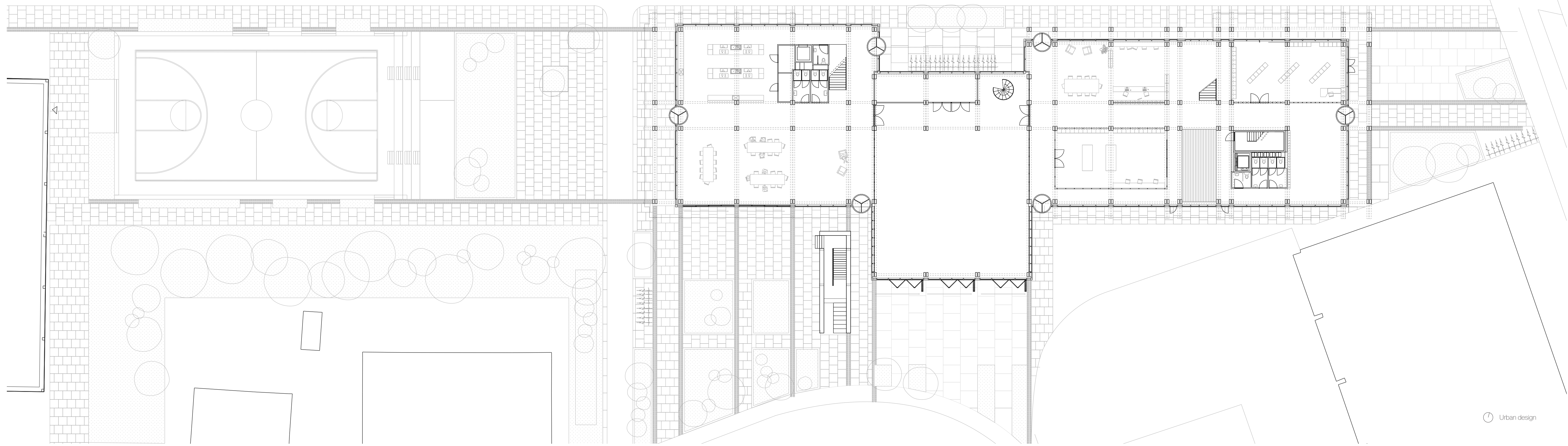
Miguel Bost 14886356 | 11-6-2025
Public building graduation studio P4
Tutors: Siem van Dam (TD), Henk Bultstra (PD) & Florian Eckhart (TBC)



1:10000 positioning



Axonometric perspective 1:200

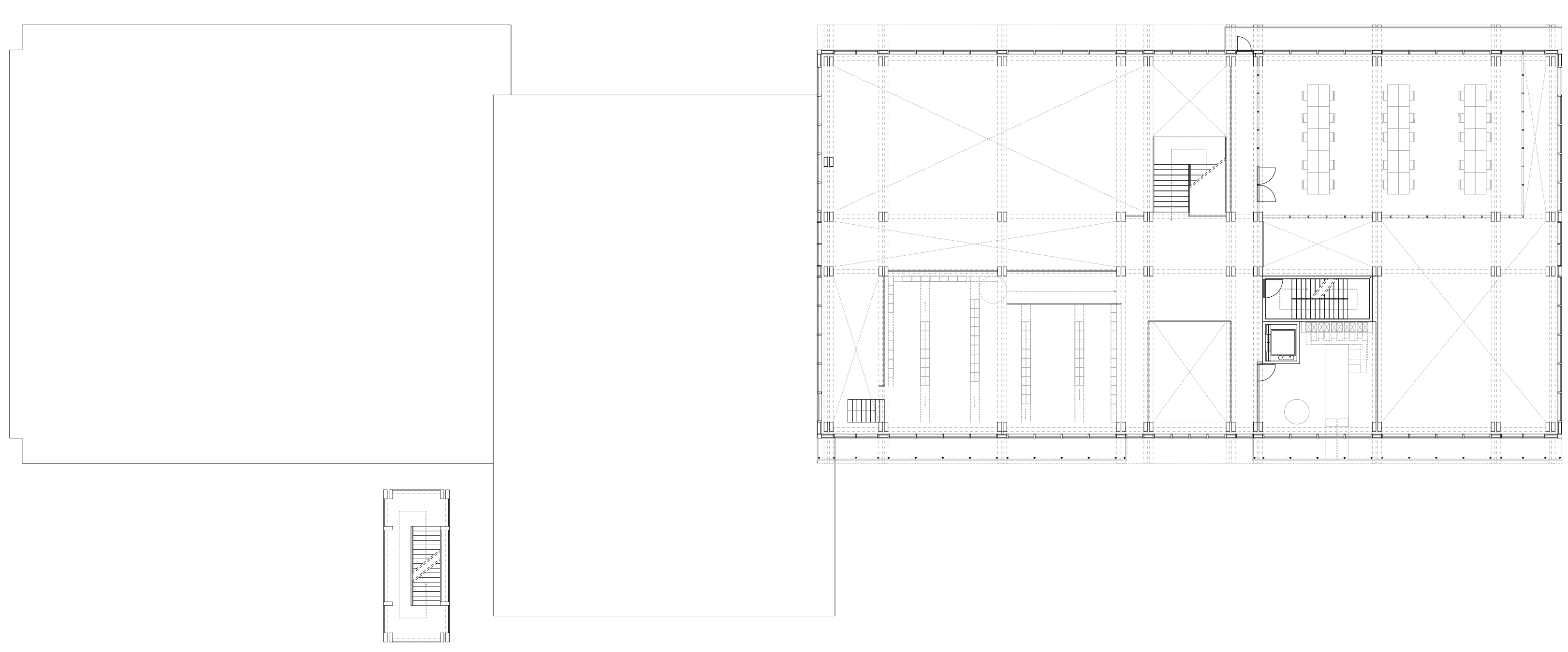


Urban design

4.

4th floor
study alert area
library
Service area
circulation
balcony

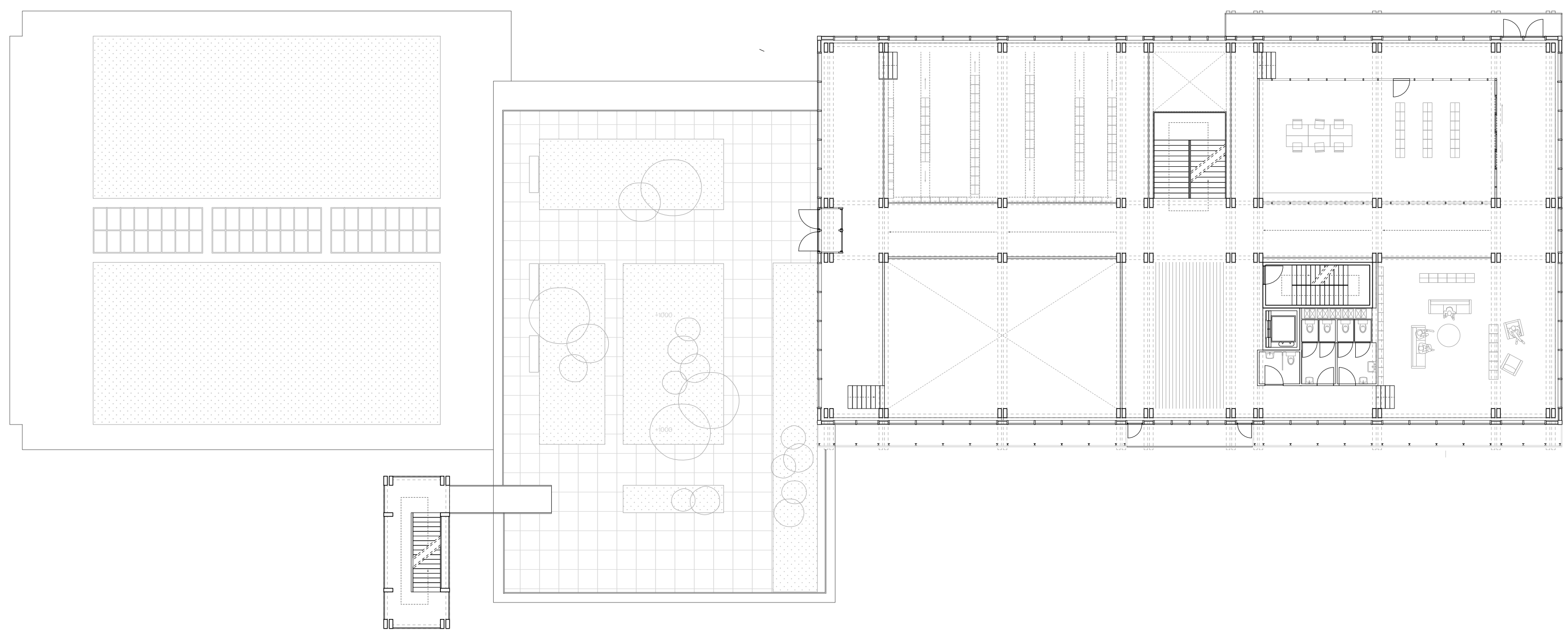
105
105
90
40
22



3.

3rd floor
library
archive/ closable library area
reading area
circulation
undetermined area
roof terrace

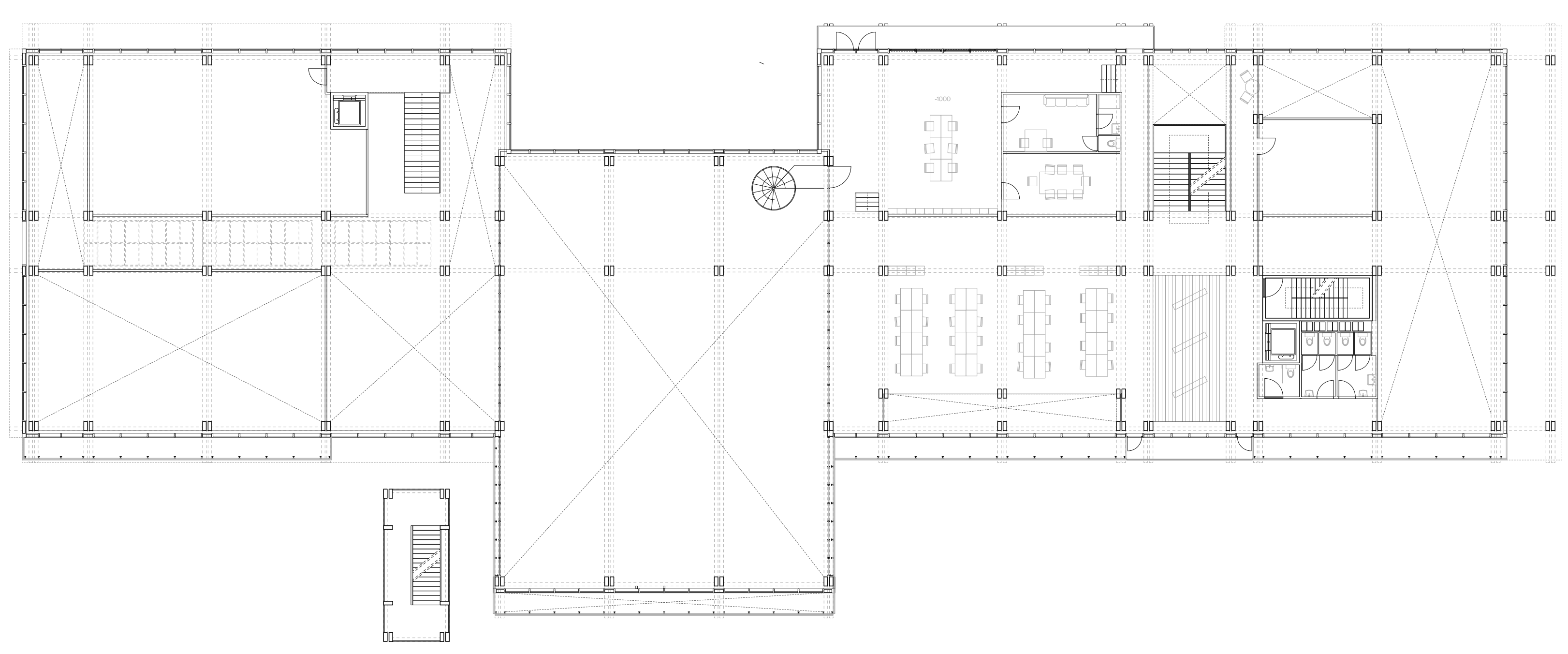
445
87
63
60
31
460



2.

2nd floor
Flex workspace
Staff office space
Staff meeting room
backstage
workshop room
undetermined space
Toilets

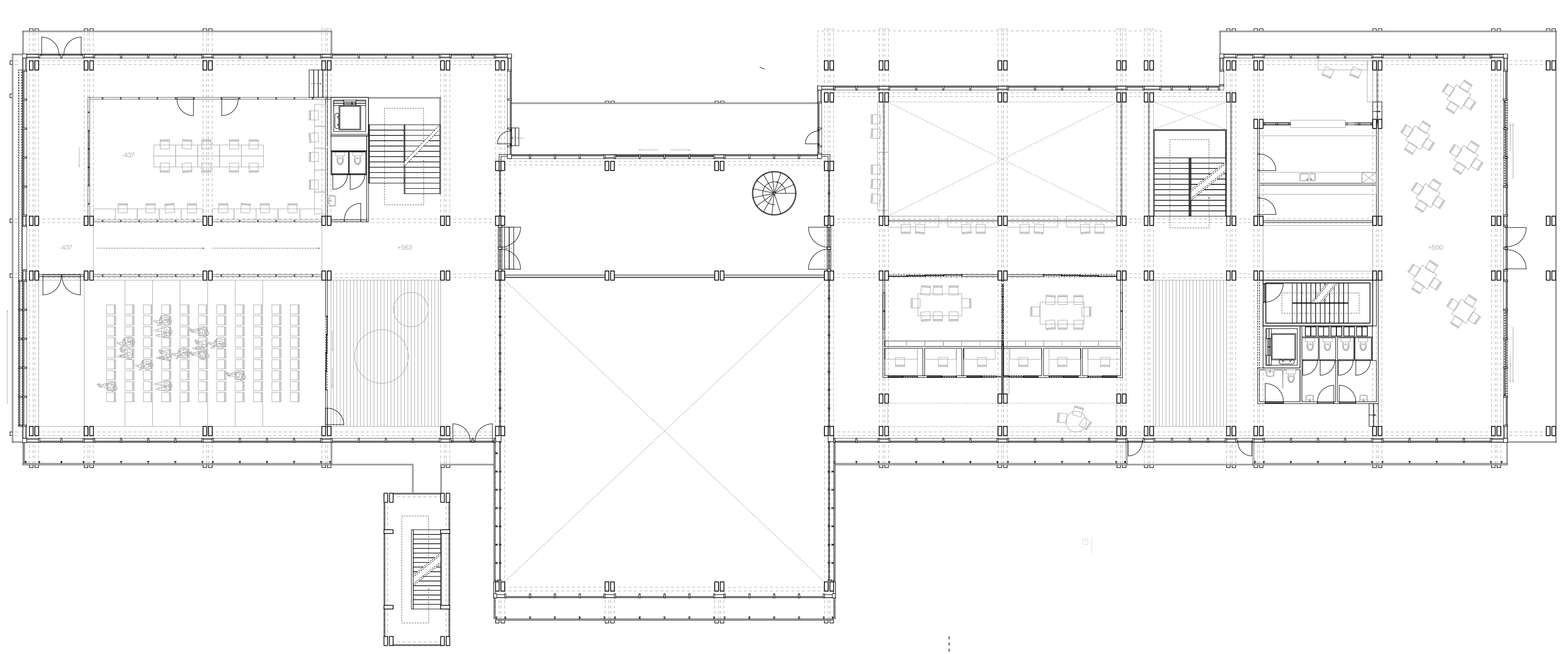
80
40
20
20
32
31
38



1.

First Floor 1200
Lecture hall
Mediatheque
Foyer
Balcony north
Coffee area
cafe
Undetermined space
Storage
Flexible meeting room
Single person booth
additional undetermined space
toilets
circulation area
circulation with inclination
Outdoor area
balcony foyer
Balcony cafe

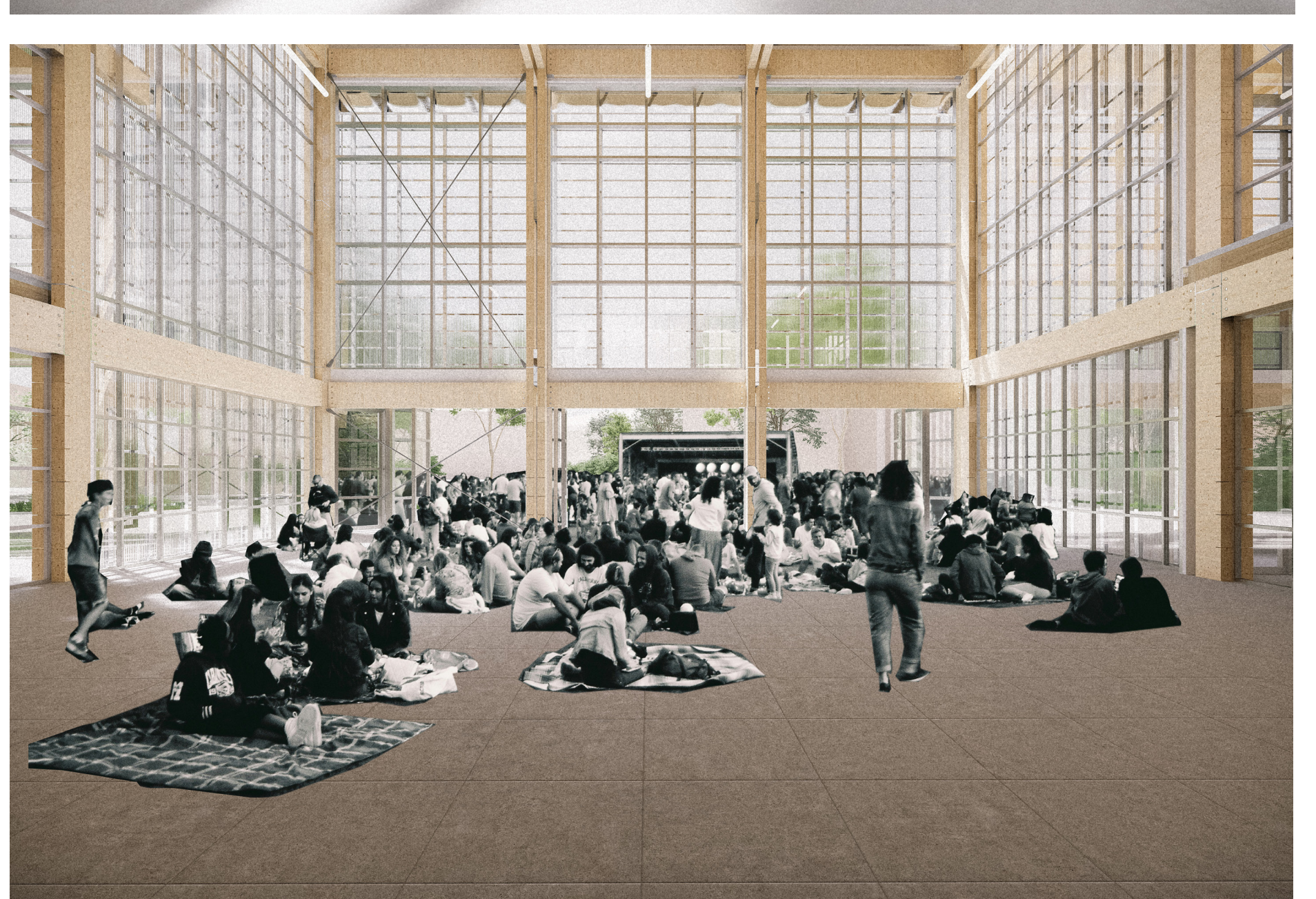
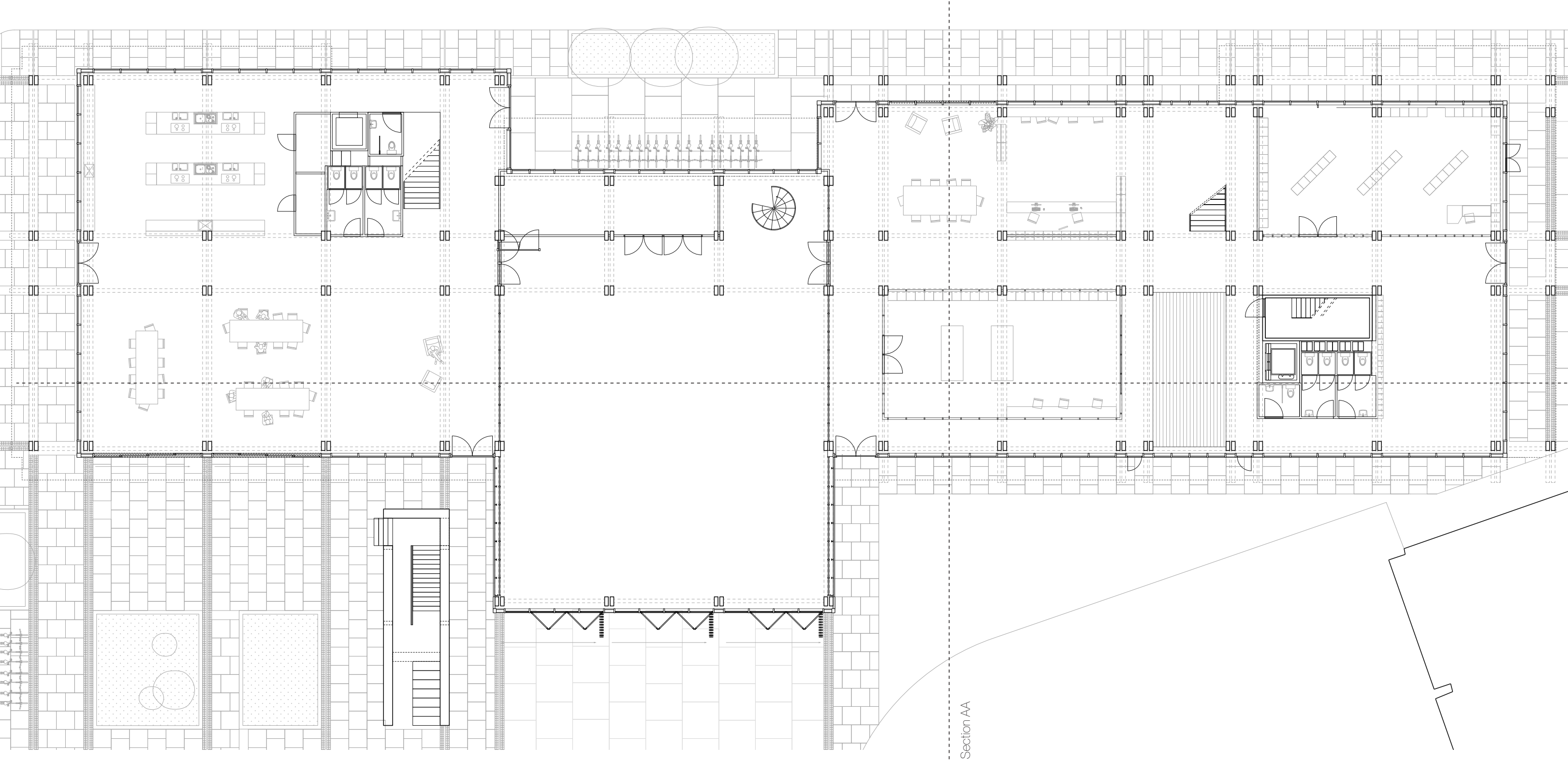
136
91
111
57
16
20
120
12
21' 25 or 50 joined
4' 3.5
79
25
36
56
45
77



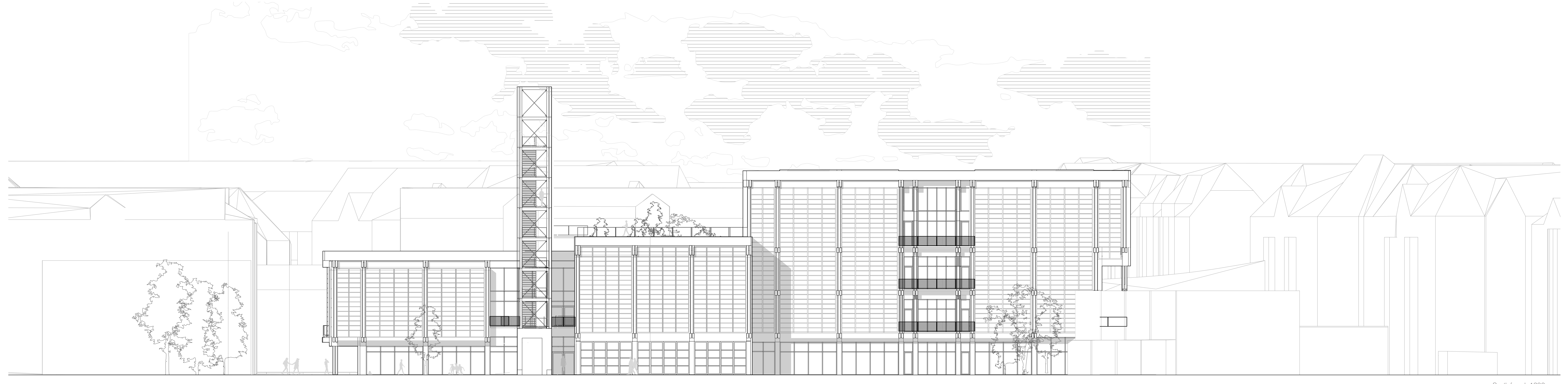
0.

Ground Floor 1200
Community kitchen
Dining area
Cold & warm storage
Large hall
Hall storage
Living room/kiosk
reception
Cornerstore
Repair & workshop
wardrobe & lockers
circulation
Toilet
Circulation
Undetermined

67
200
10
364
35
69
9
78
81
48
226
16
93
56

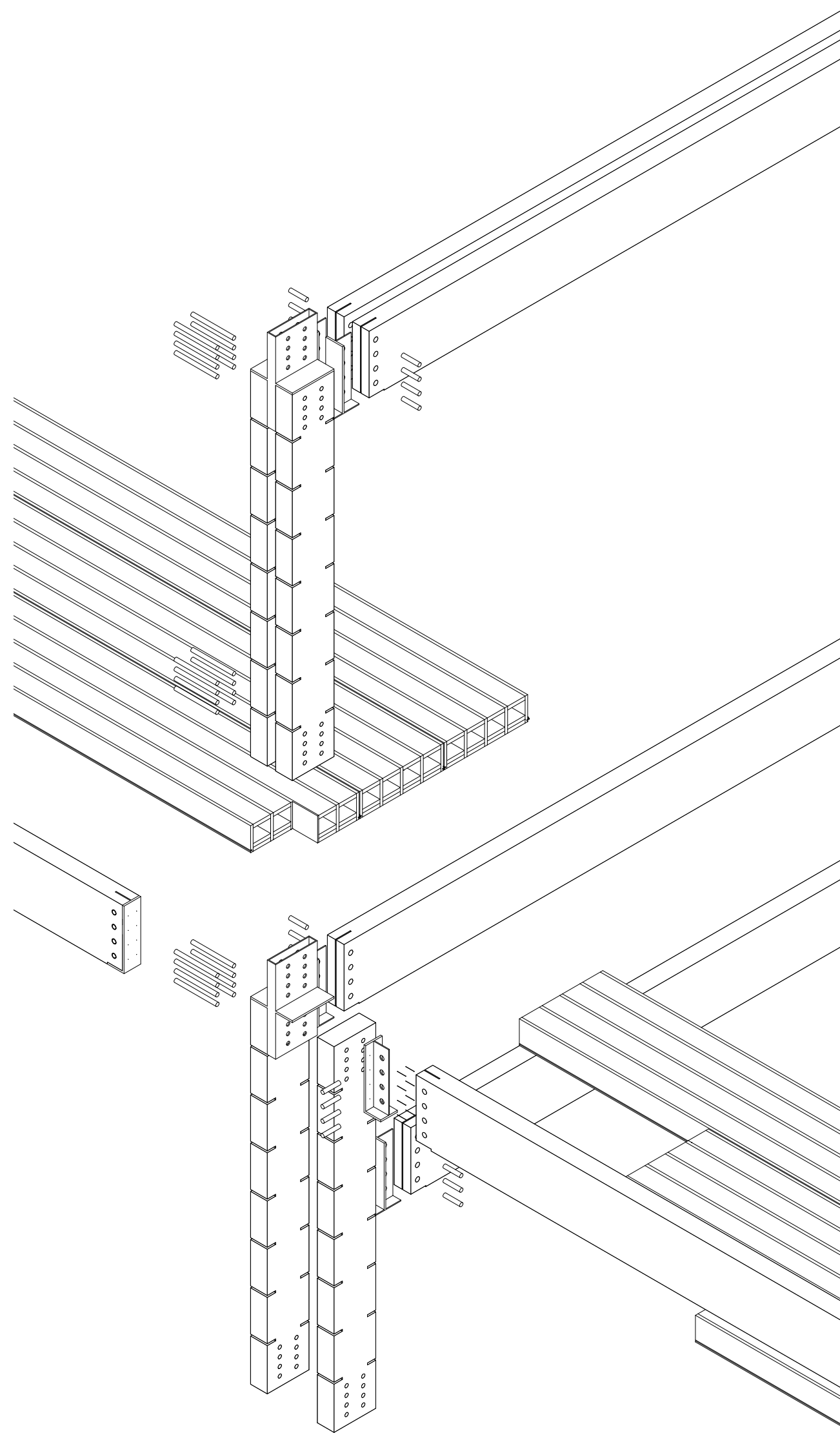
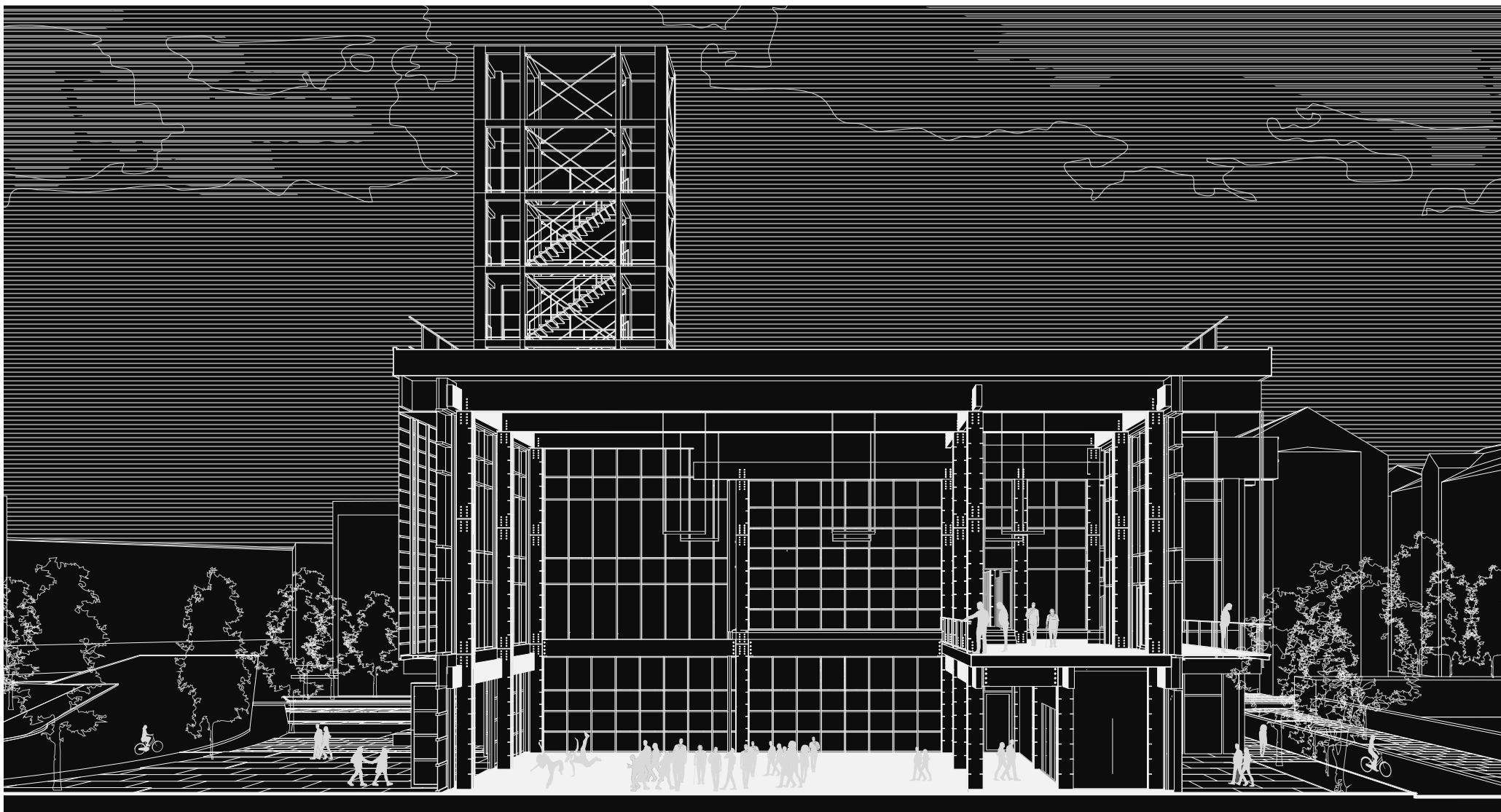
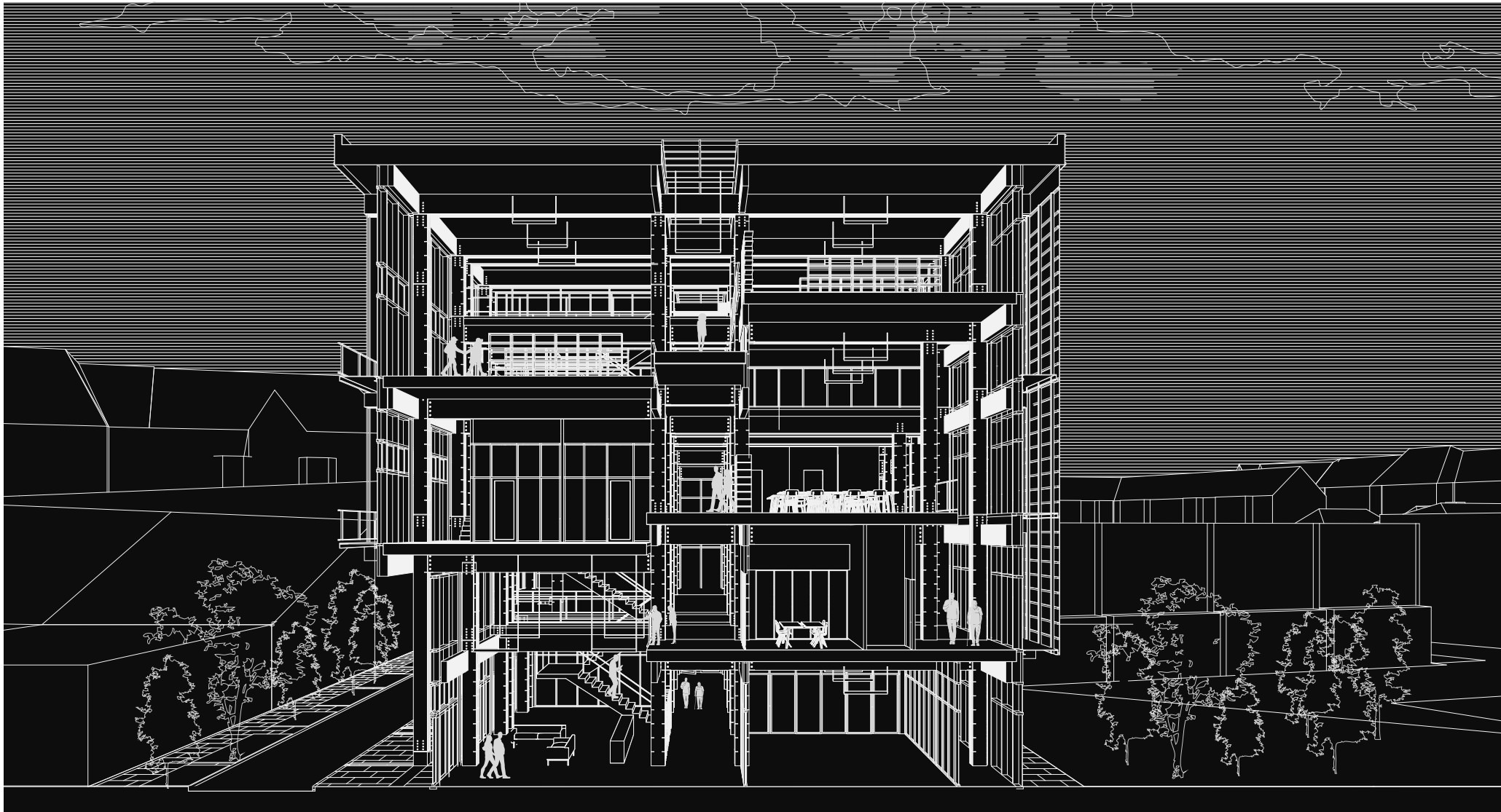


From top to bottom: Dining area of community kitchen, Library, Large hall, lecture hall being used for v

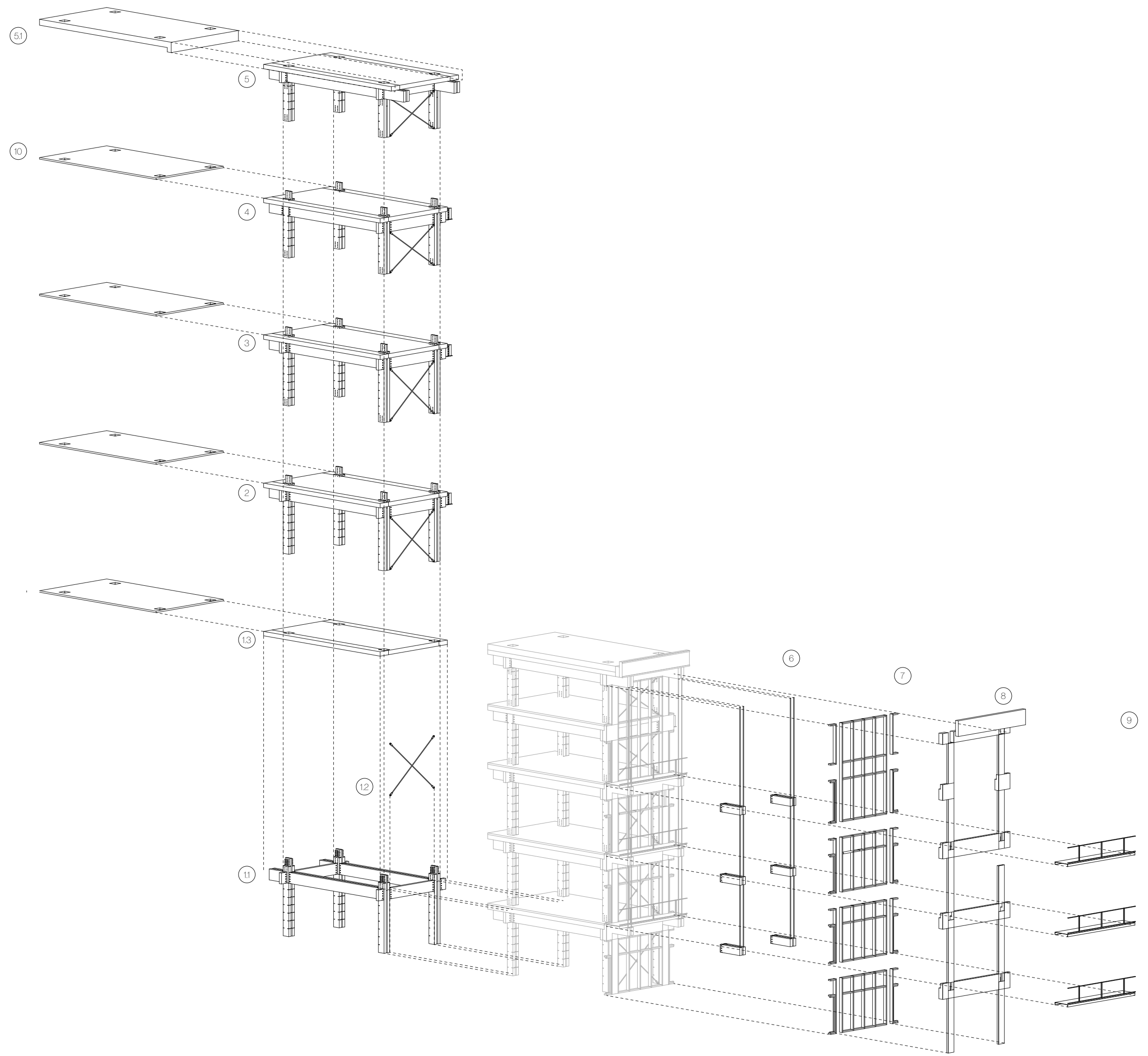




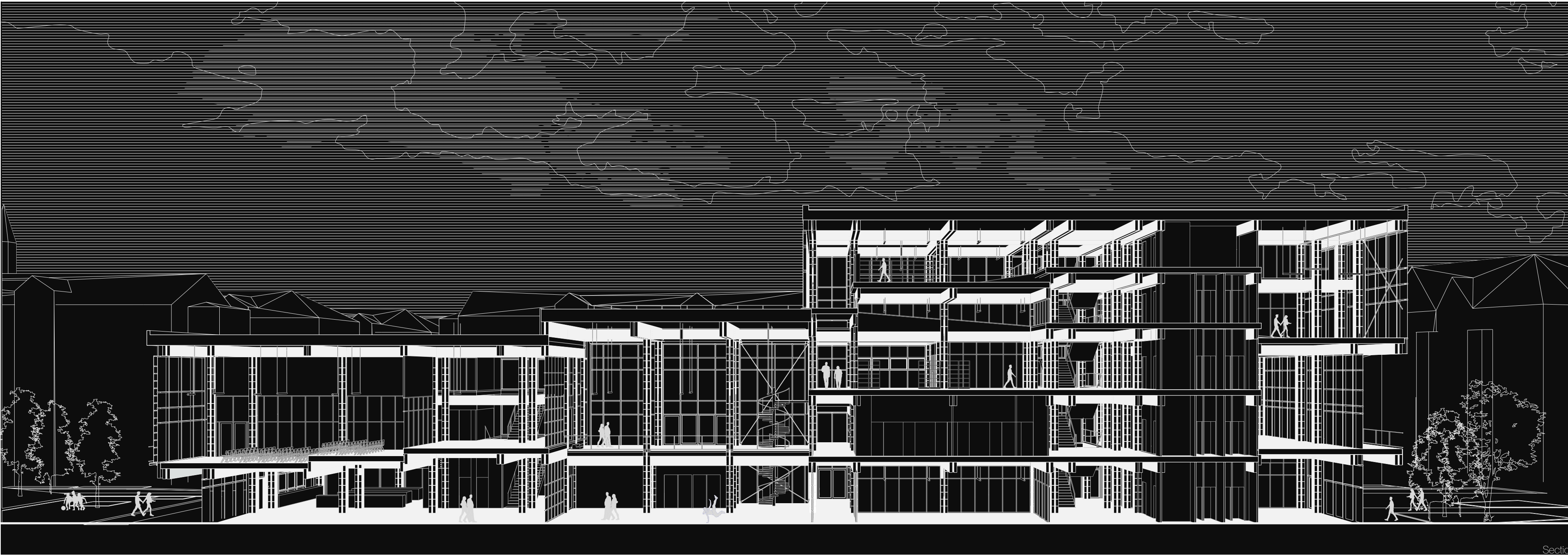
Night impression approaching from Horgarden



Demountable system



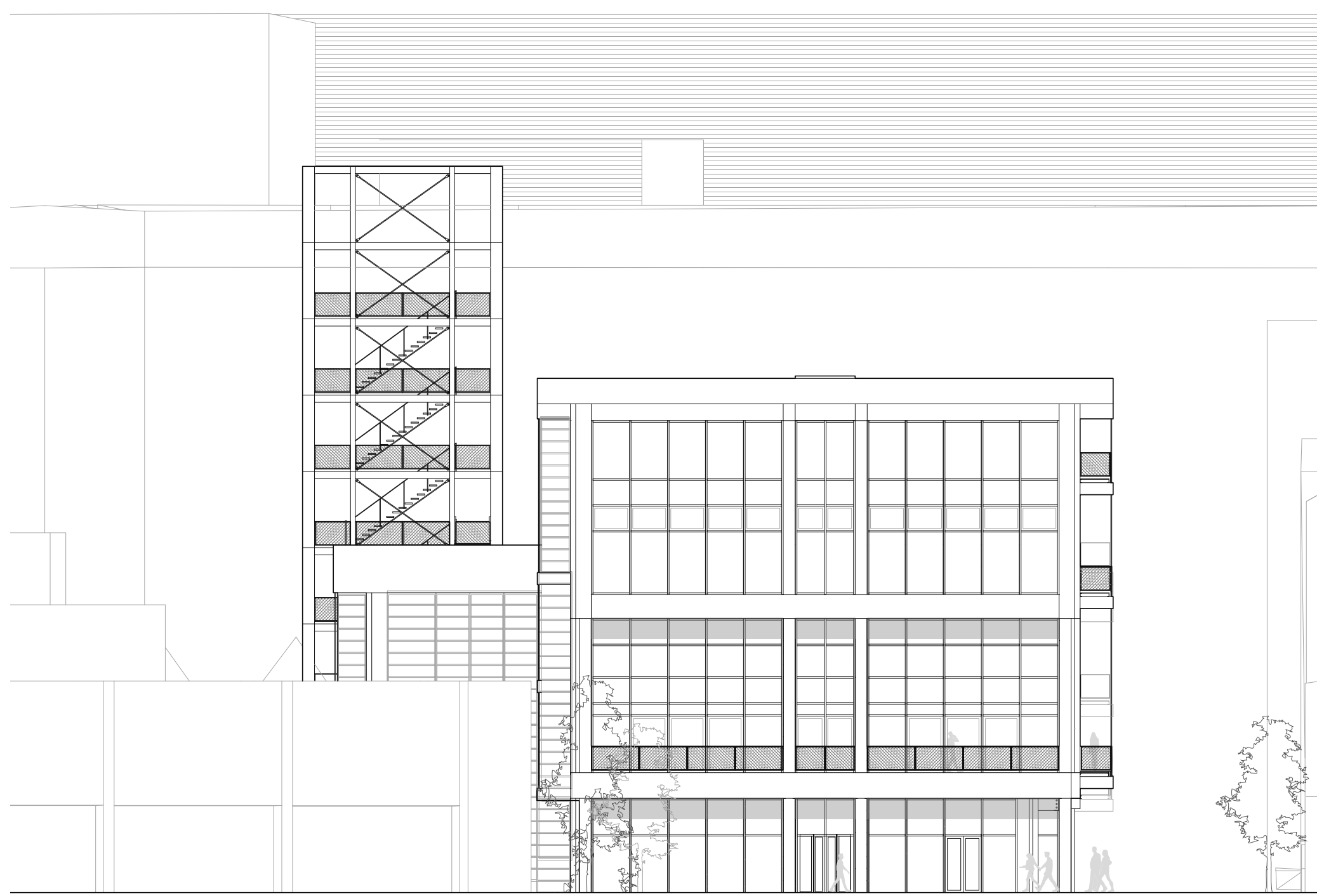
Assemblage sequencing



West facade 1200



North facade 1200



East facade 1200

From left to right:
Flex workspaces,
Undetermined area being used as reading
spot
Main street on first floor

