

# PALAC FLORENC

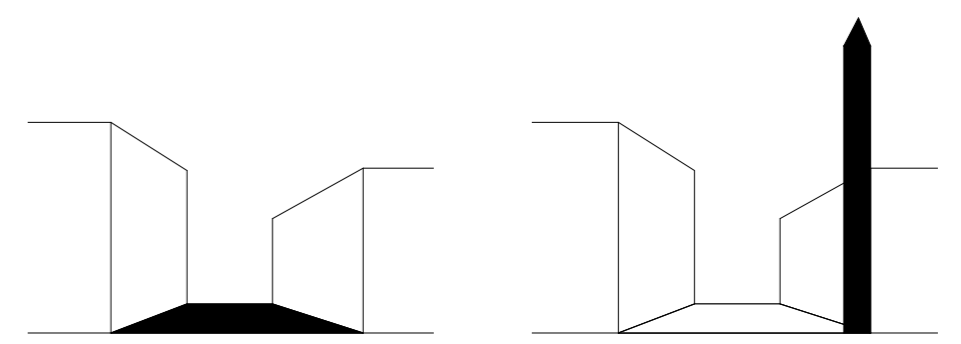
Student Andreea Visan

Mentors Susanne Komossa  
Niklaas Deboutte  
Stephan Verkuijen



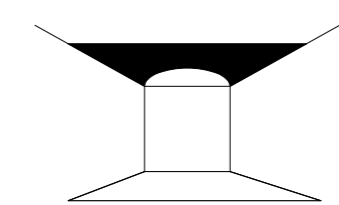
1:5000

## PHENOMENOLOGICAL RESEARCH

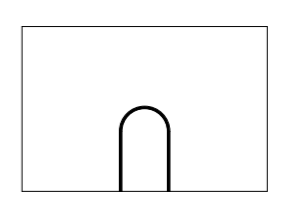


LOCUS

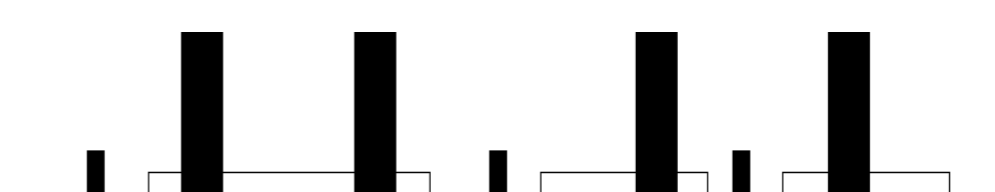
FOCUS

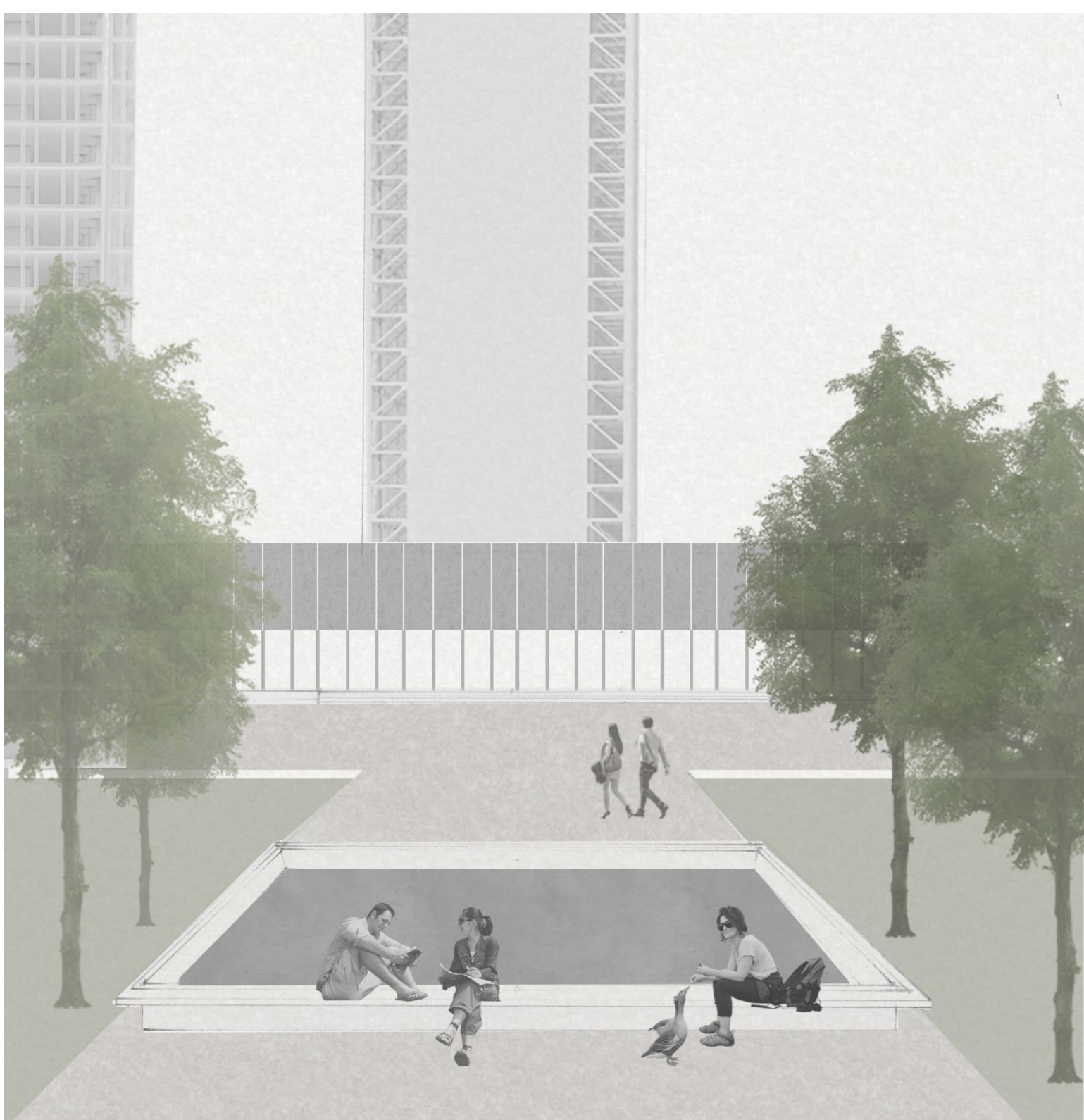
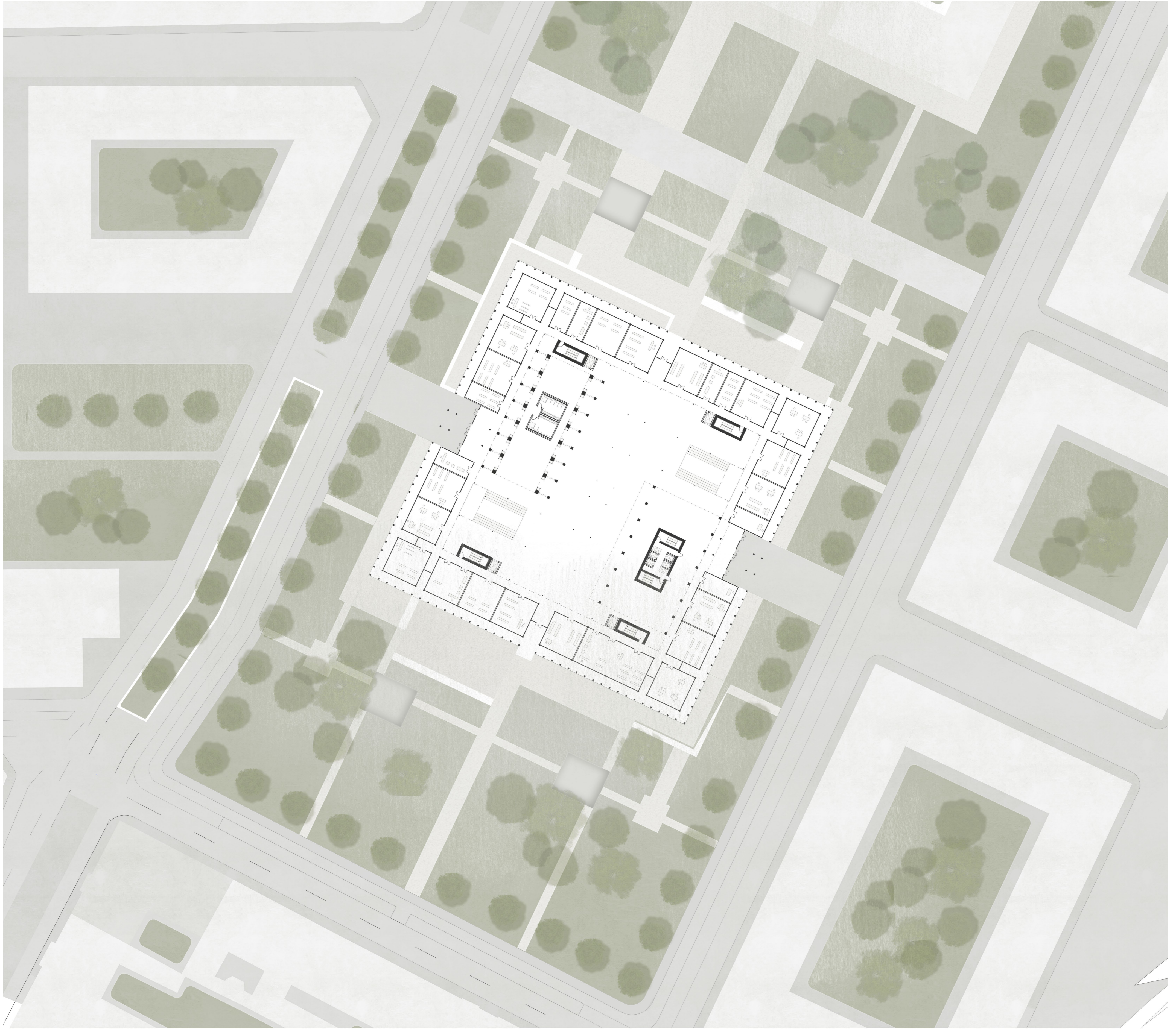


FOCUS

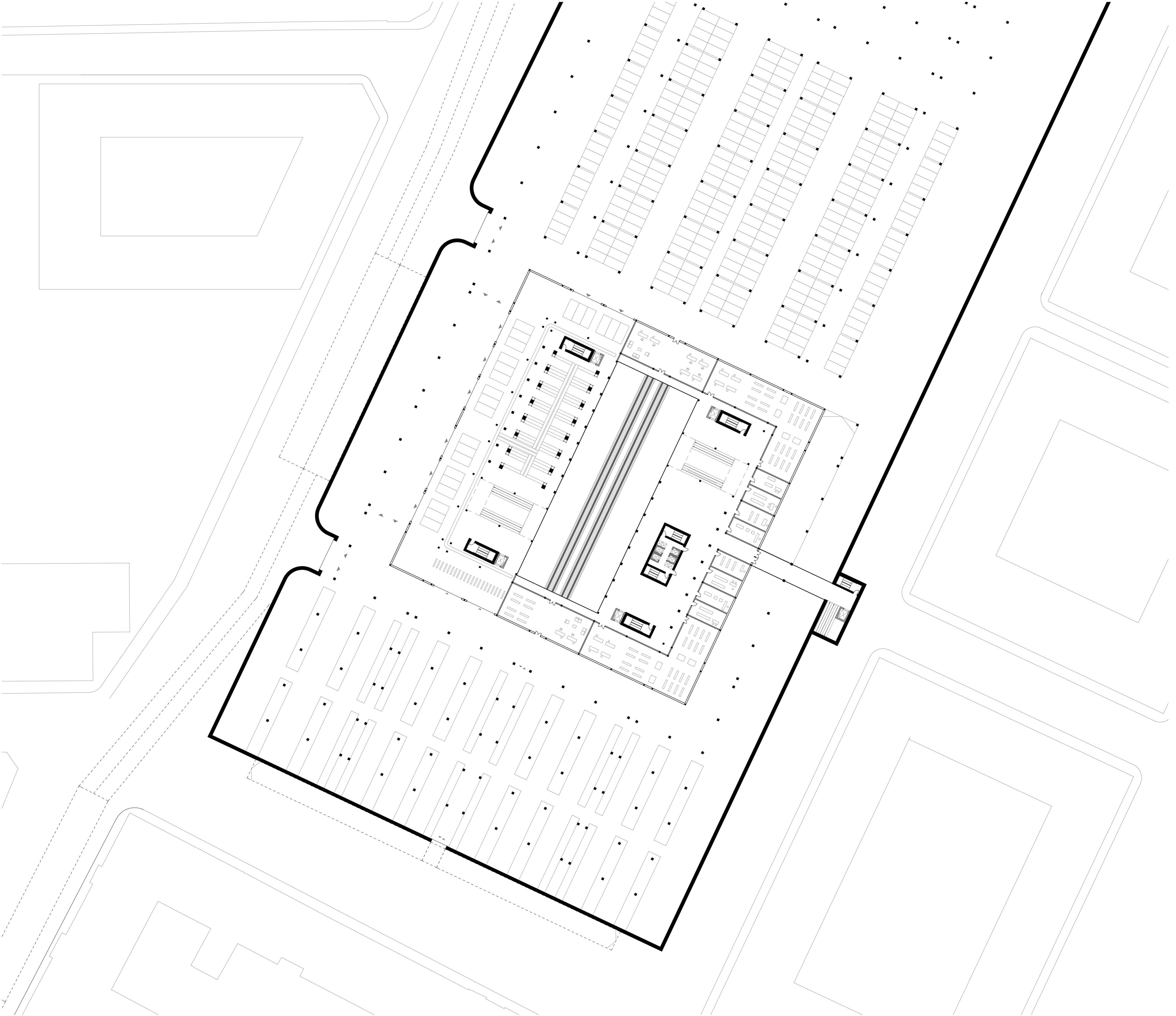


PORTA

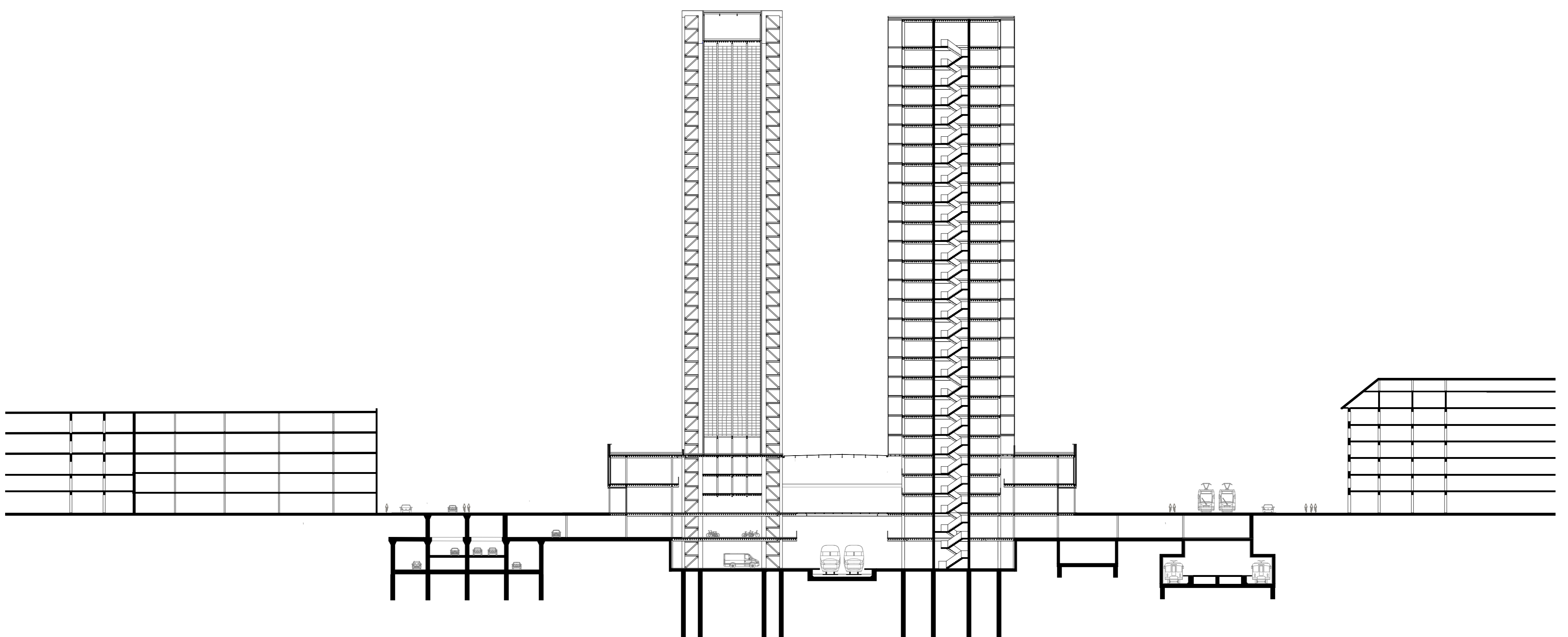


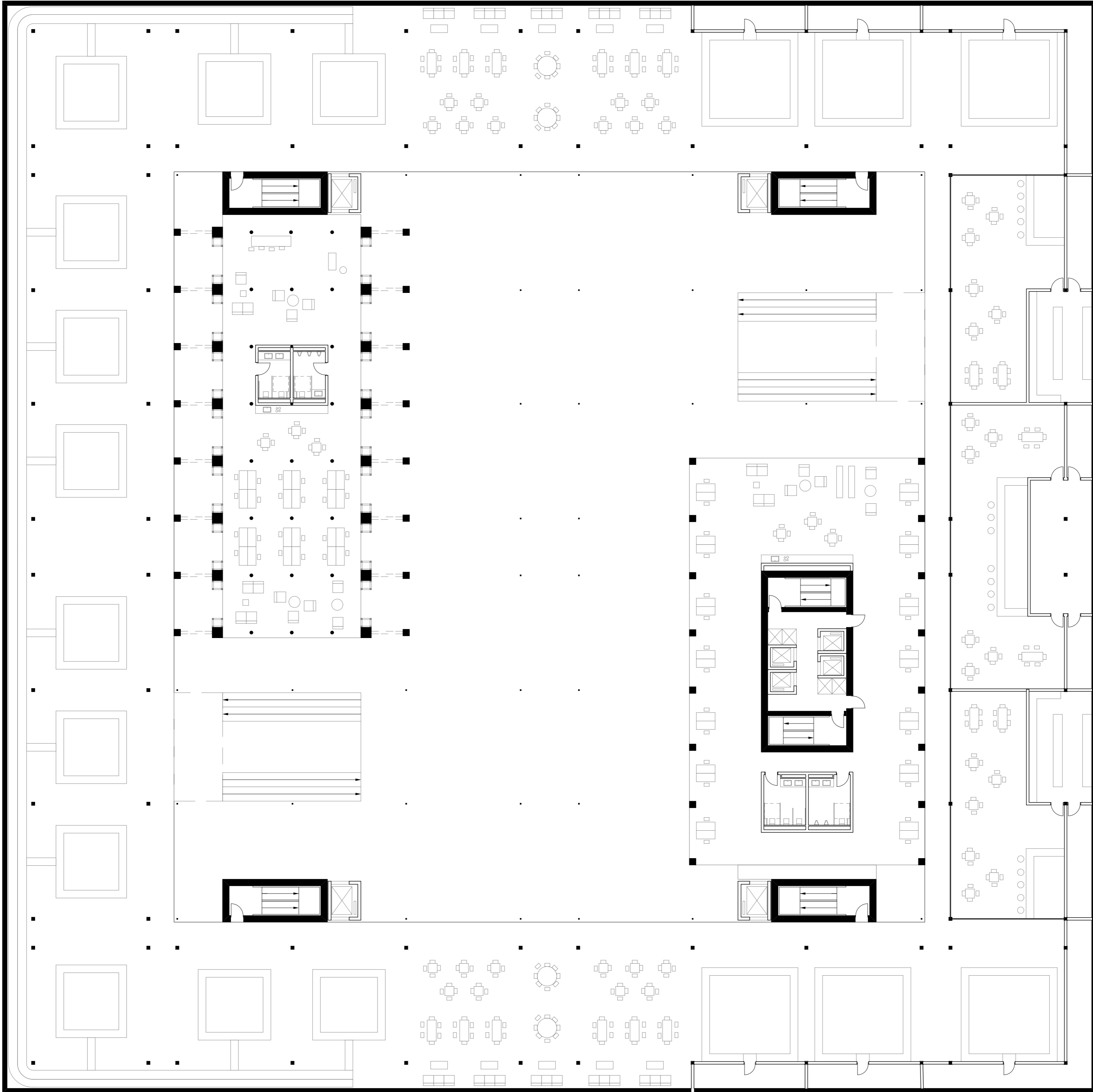


UNDERGROUND PASSAGE 1:500

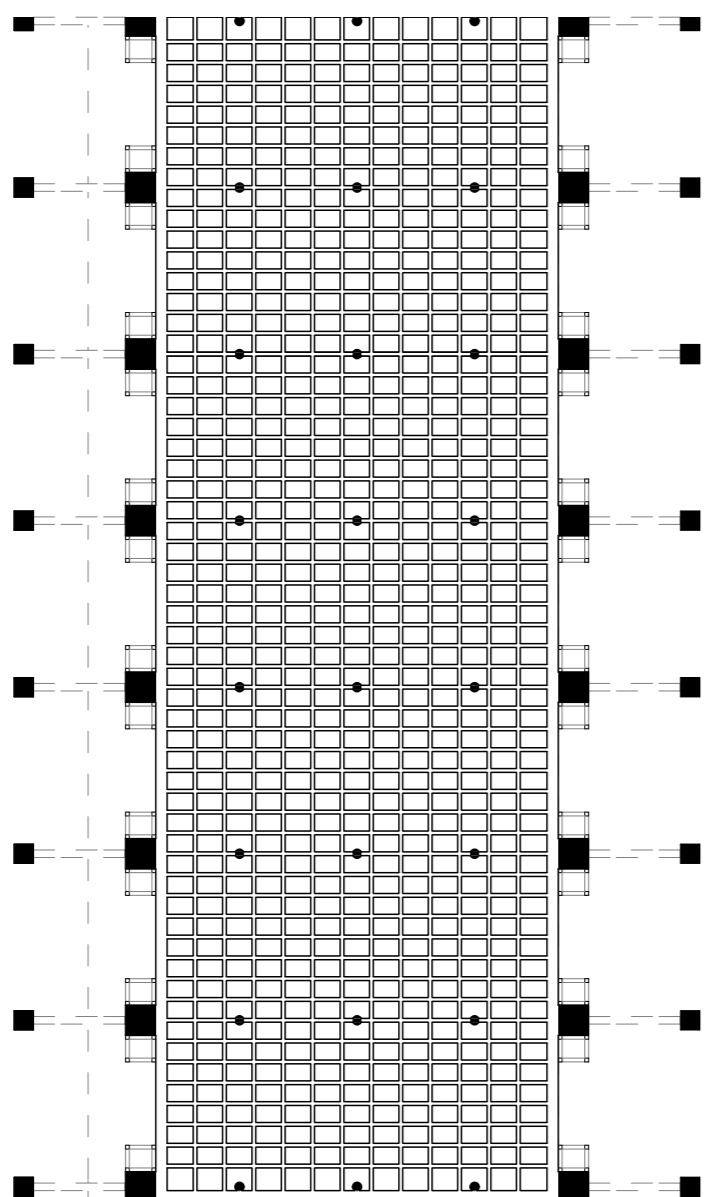


SECTION SITE 1:500

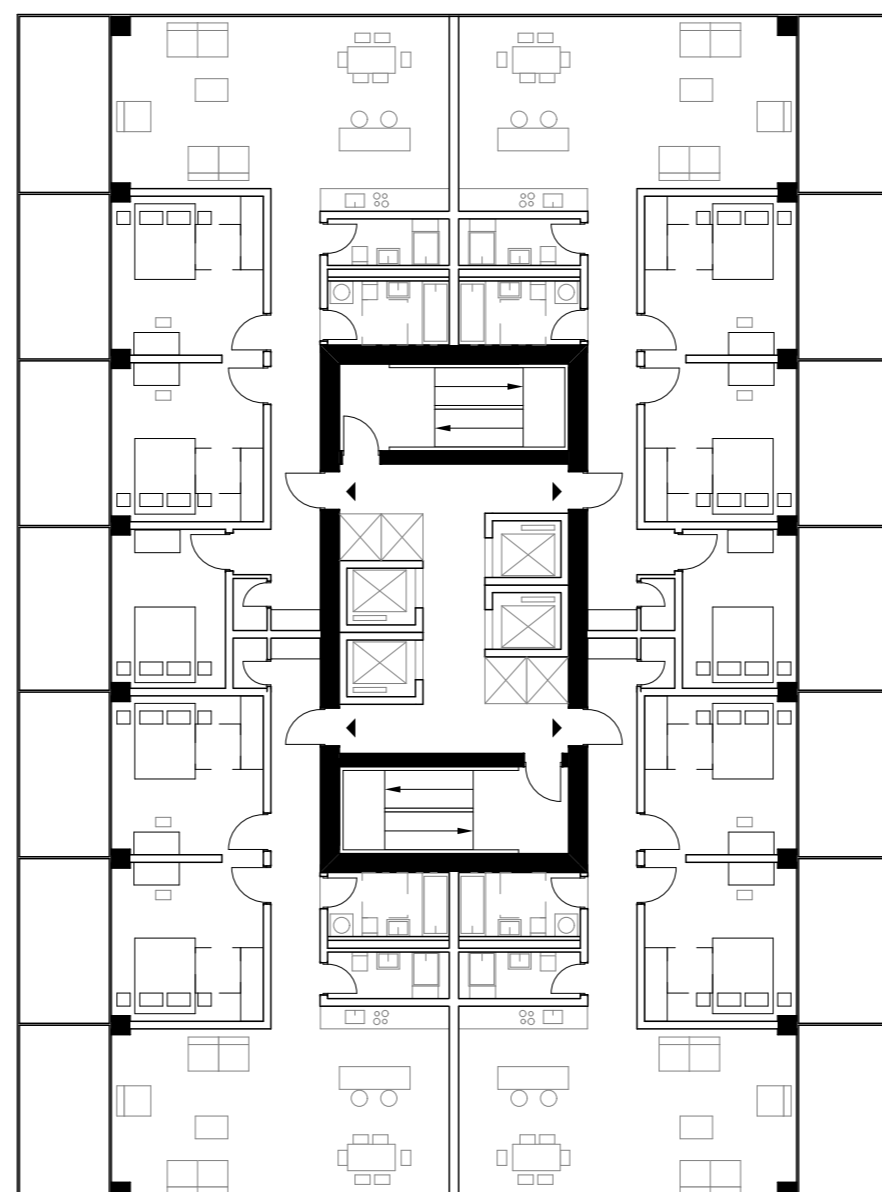




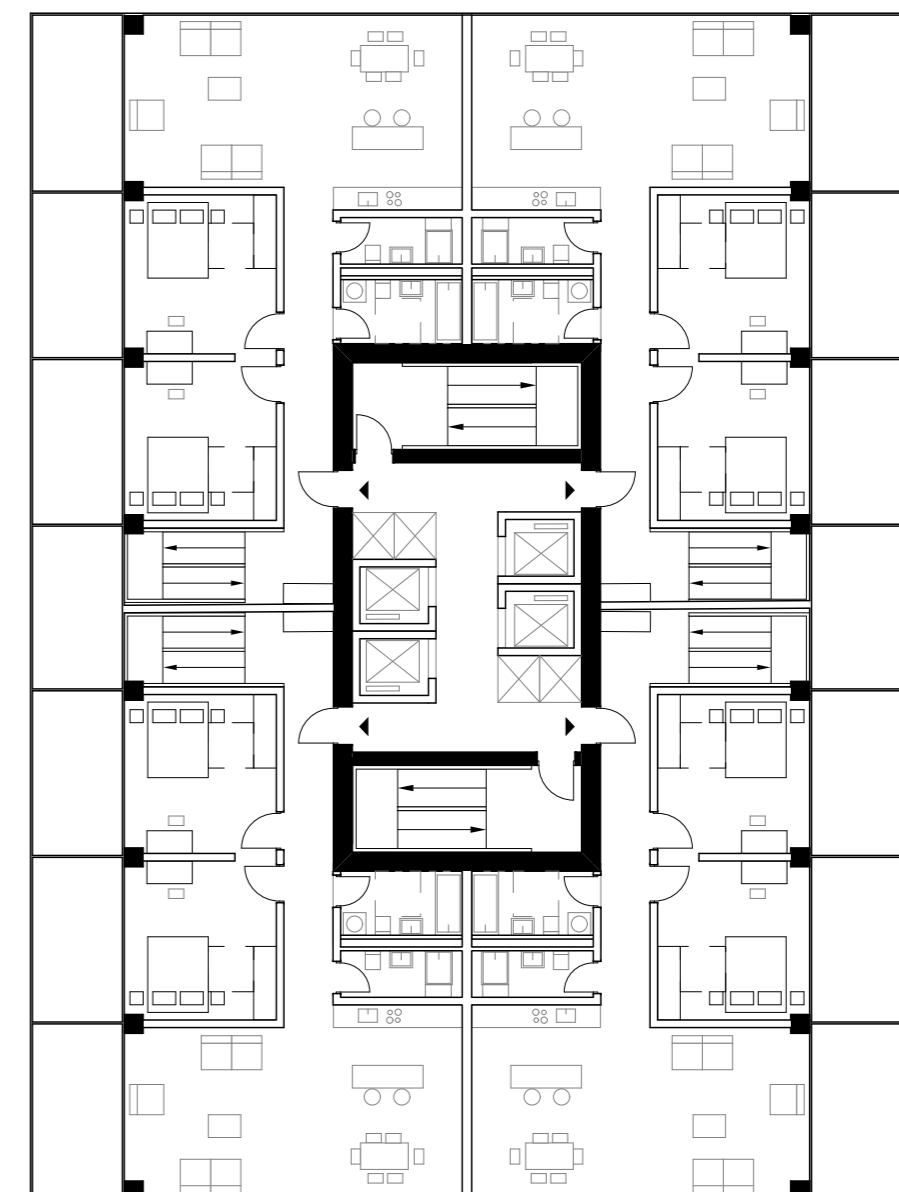
REGULAR FLOOR STORAGE  
TOWER 1:200



REGULAR FLOOR DWELLING  
TOWER 1:200 (TYPE 1)



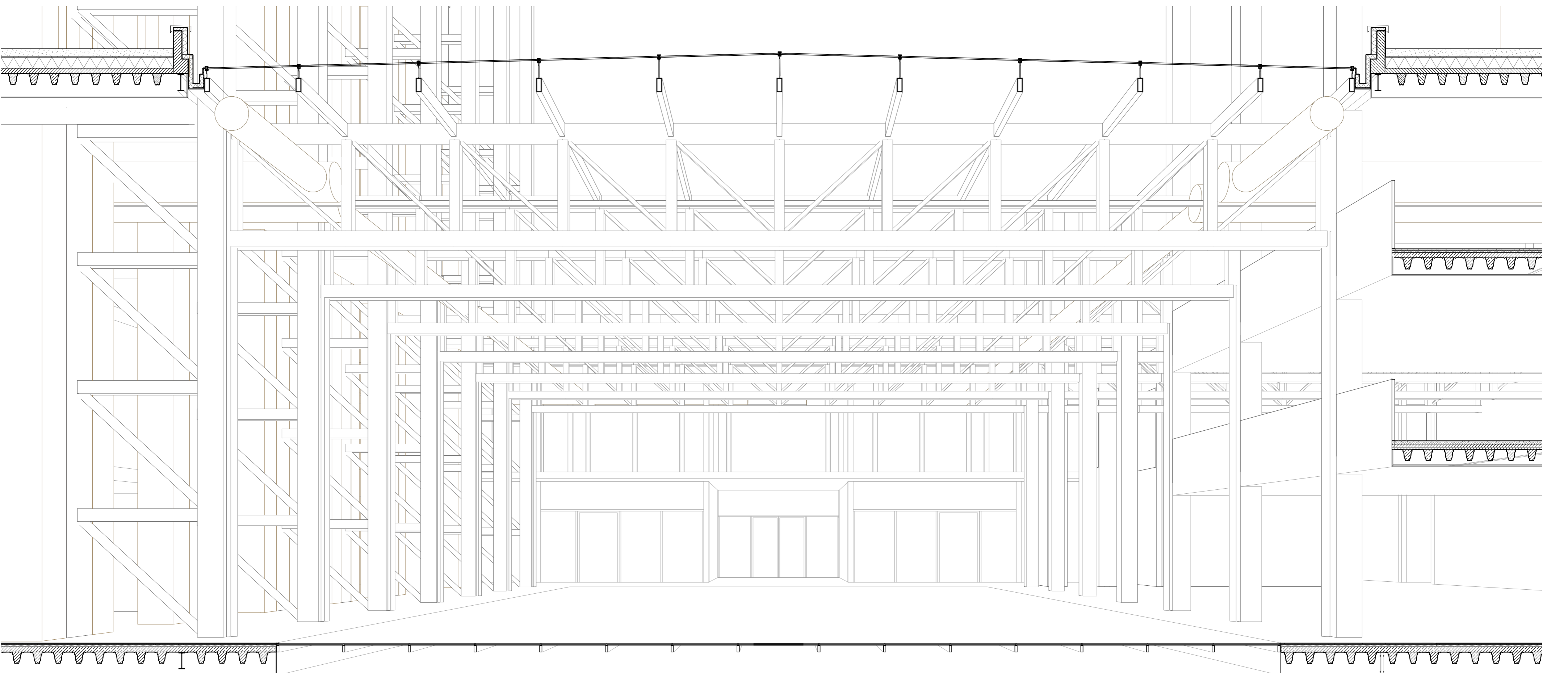
REGULAR FLOOR DWELLING  
TOWER 1:200 (TYPE 2)



MODEL PICTURE ATRIUM

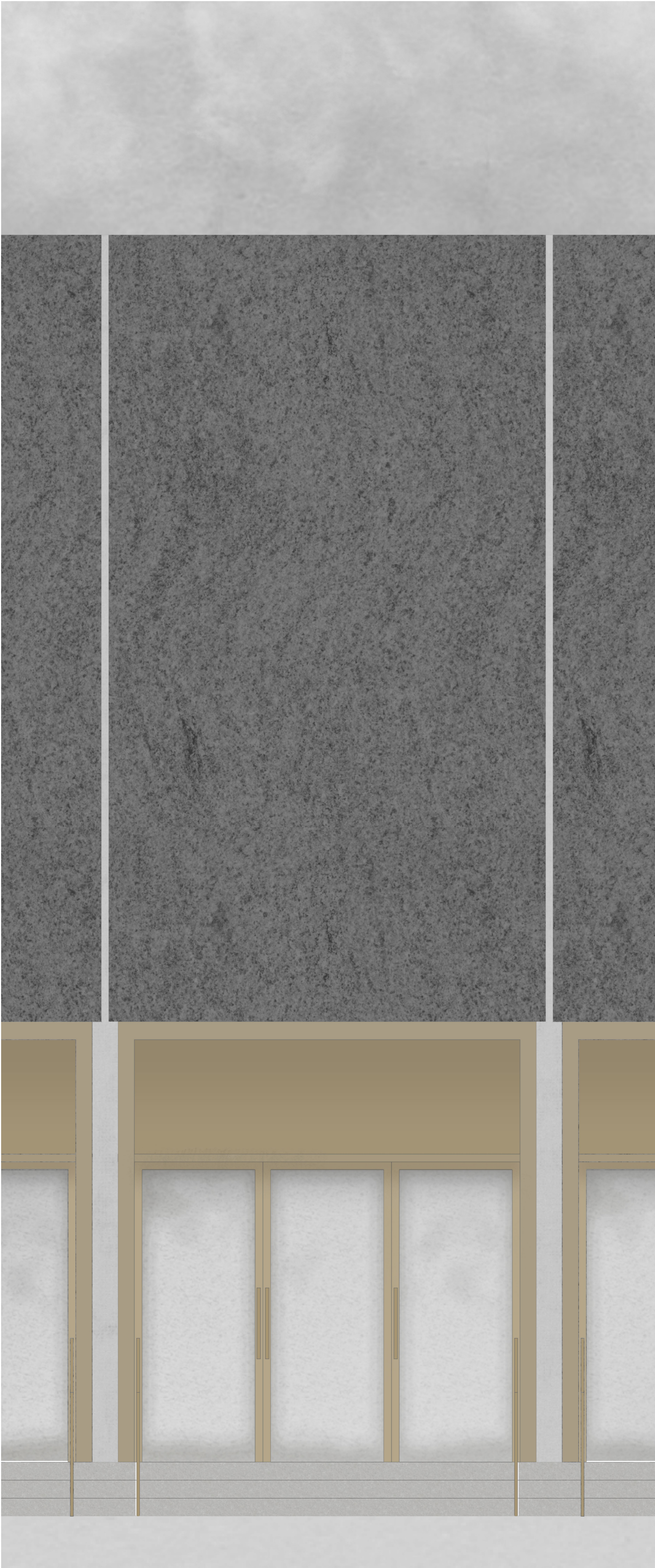


SECTION PERSPECTIVE ATRIUM 1:50





FACADE ENTRANCE 1:20



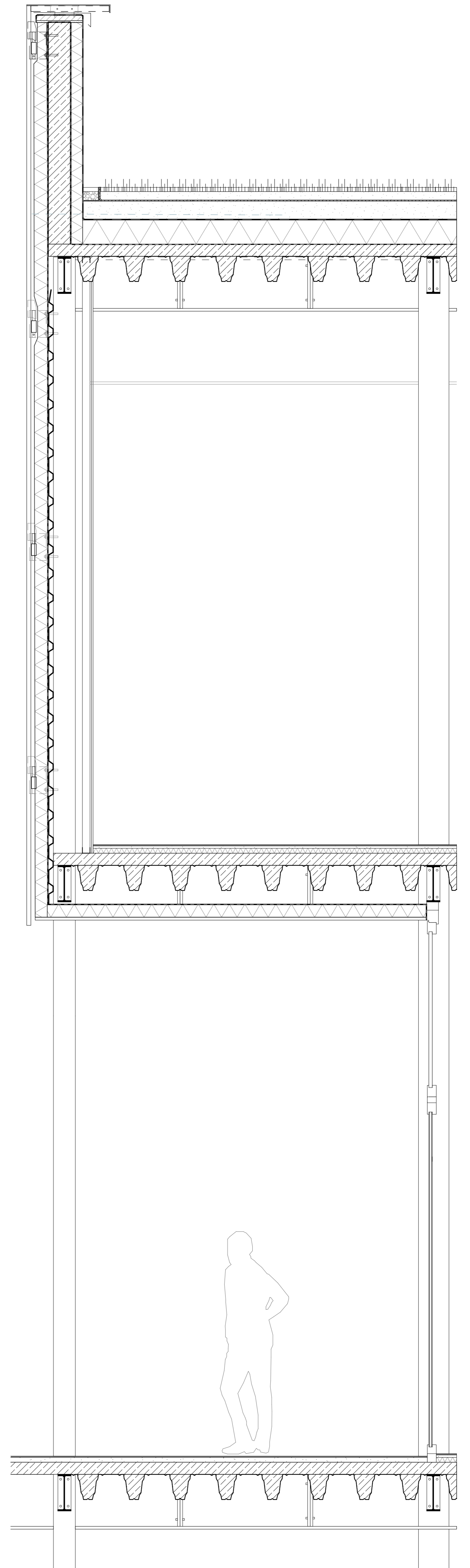
VERTICAL SECTION 1:20

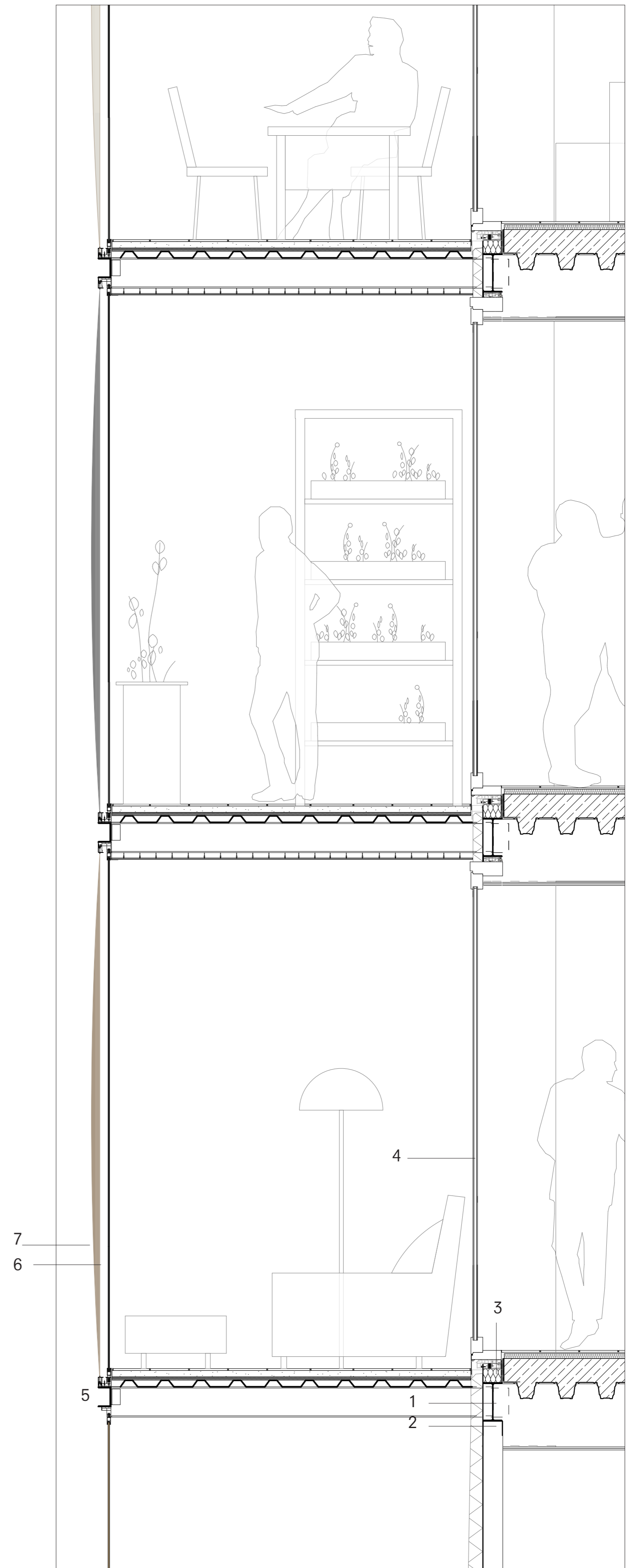
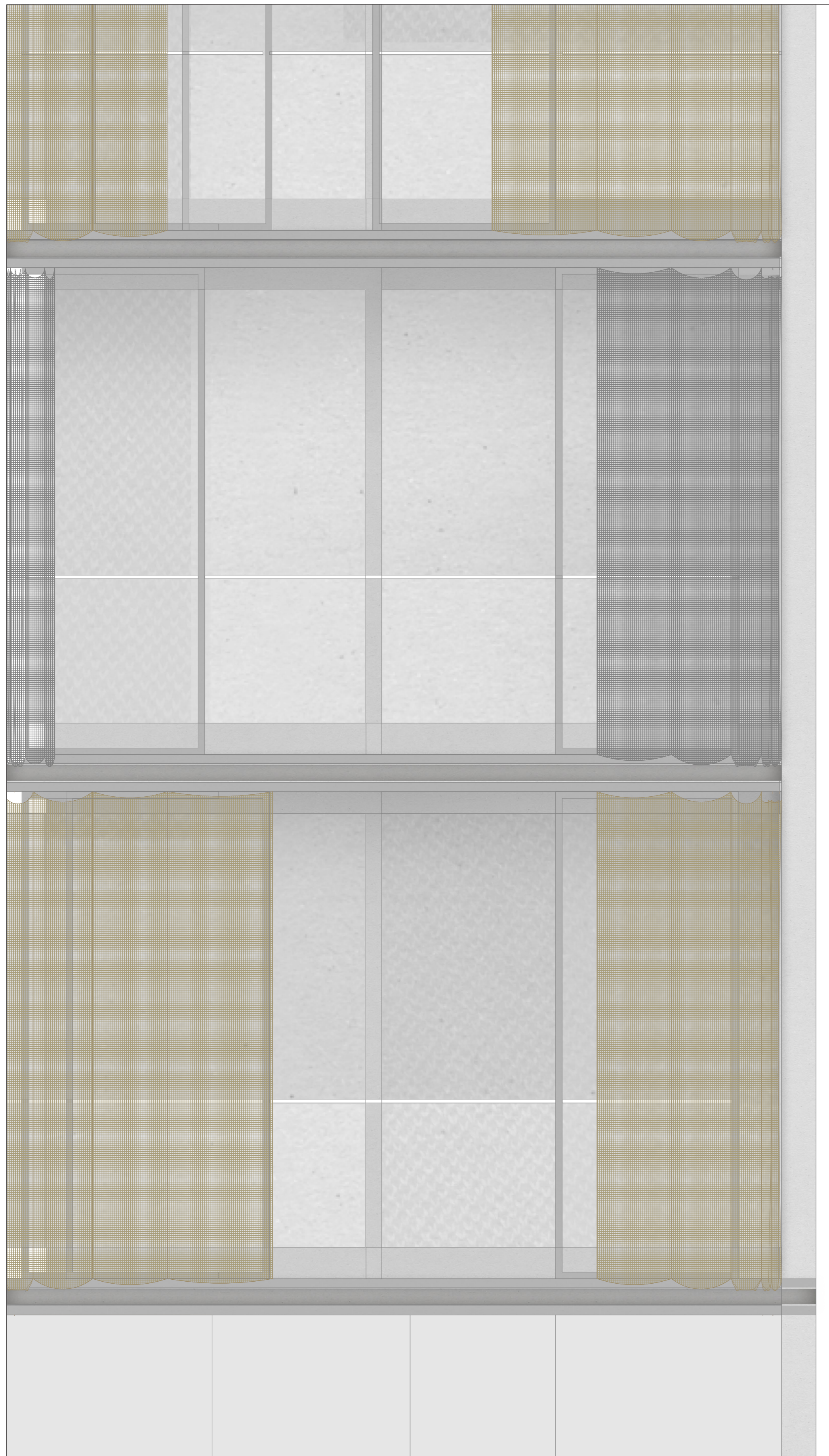
Wall Construction

- Granite Panels
- Steel connector
- Insulation
- Vapor Barrier
- Trapezoidal metal sheet
- Steel column 160 mm
- Gypsum board

Roof construction

- Extensive greenery
- Soil layer
- Gravel
- Water proofing foil
- Insulation 200 mm
- Vapor Barrier
- Concrete slab
- Trapezoidal metal sheet





DETAIL 1 1:5

**SECTION 1:20**

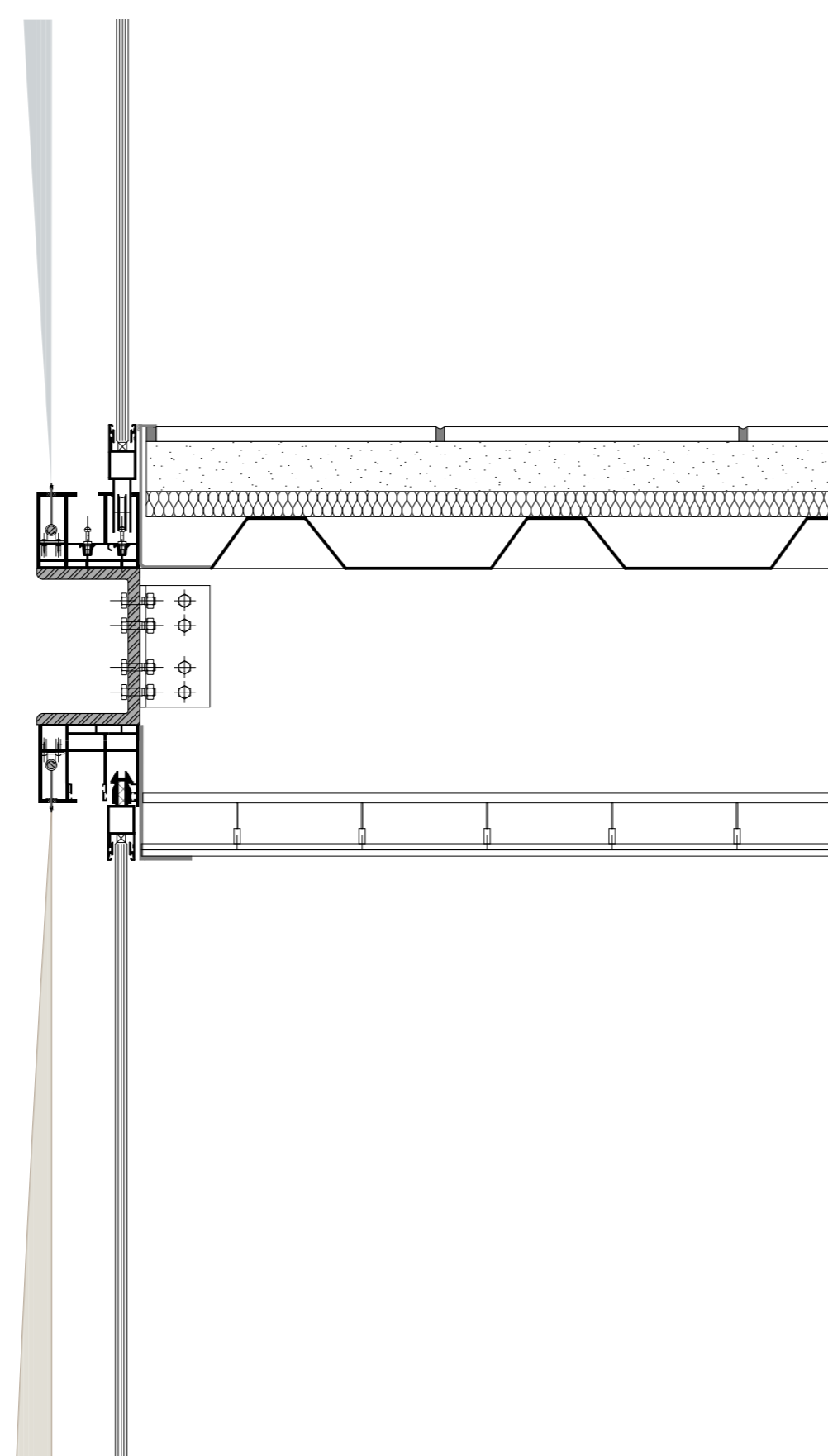
- 1 PE 240 Perimeter beam
- 2 Bolts 7 mm
- 3 Wood section 100/50 mm
- 4 Sliding door, double glazing, Schüco ASS 70
- 5 C Profile 125
- 6 Sliding windows, single glazing
- 7 Perforated metal curtains, mechanically operable

**DETAIL 1 1:5**

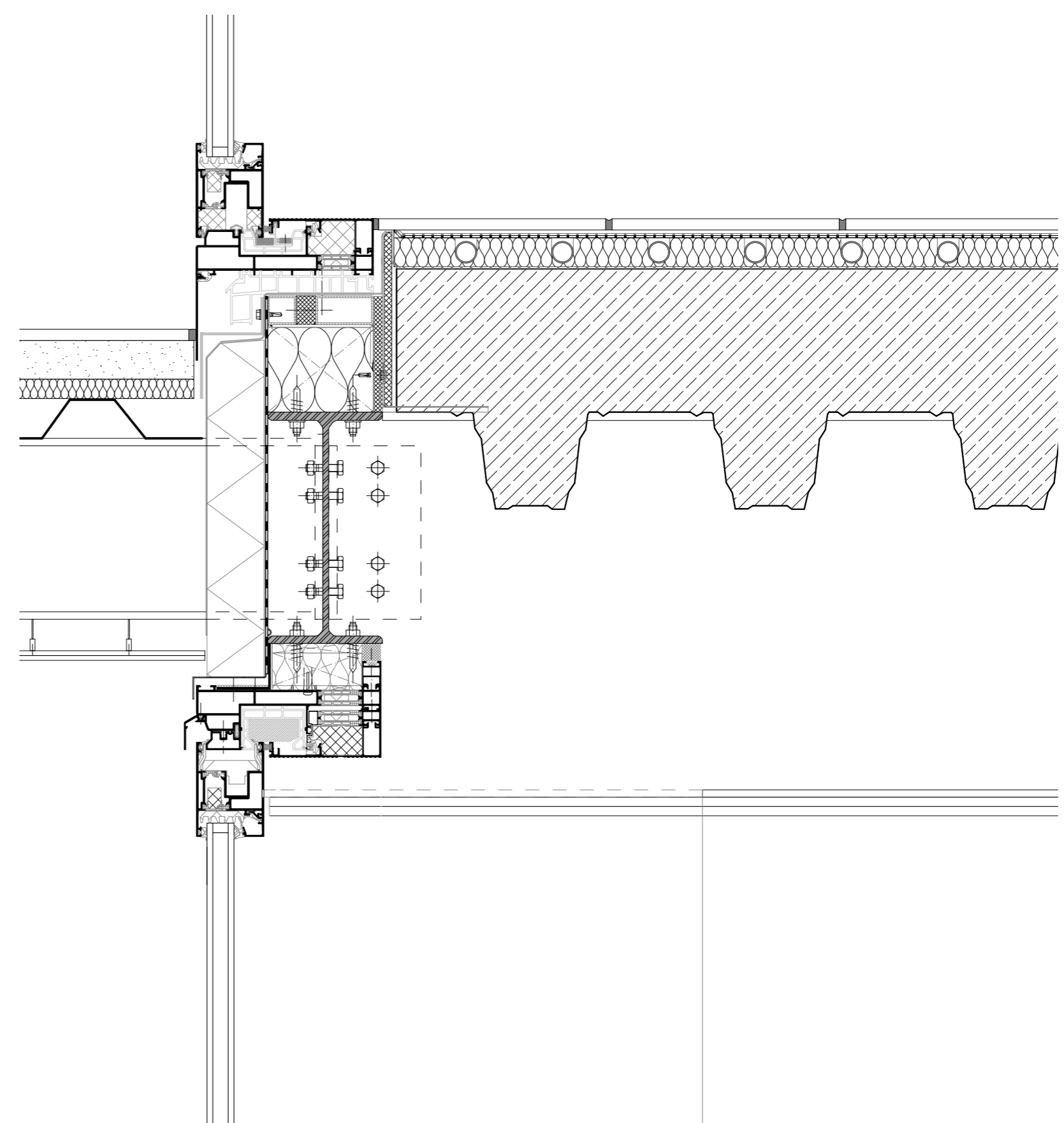
- 12 mm Floor boards
- 40 mm Screed
- 25 mm Impact sound insulation
- 40 mm Trapezoidal metal sheet IPE180
- 10 mm Gypsum board
- 2 mm Plaster finish

**DETAIL 2 1:5**

- 12 mm Floor boards
- 7 mm Thin-bed mortar
- Aluminium sheet
- Ø 10 mm Floor heating pipes
- 30 mm Insulation
- 7 mm Thin-bed mortar
- 160 mm Top layer concrete
- Composite floor IPE 420
- 10 mm Gypsum board
- 2 mm Plaster finish

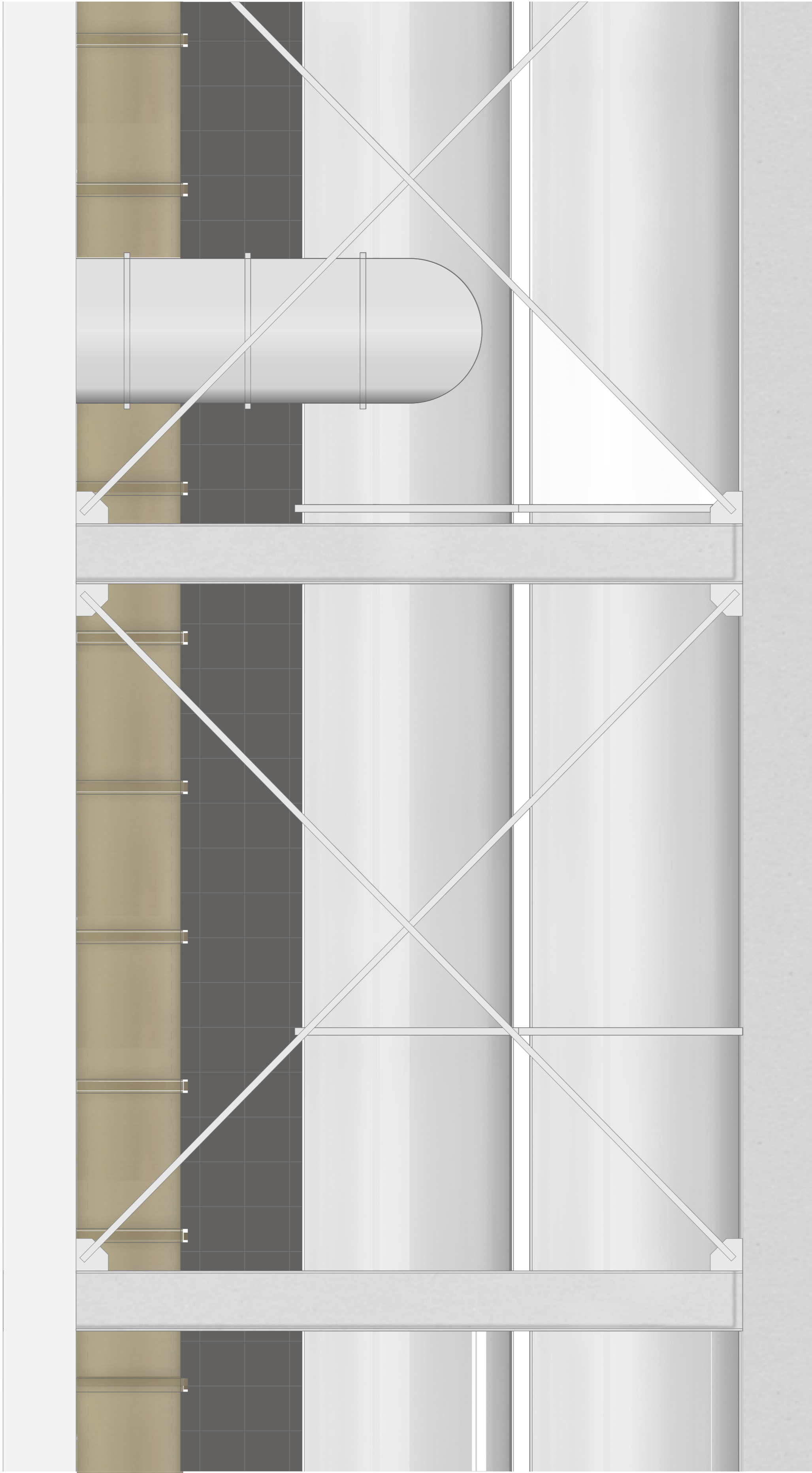


DETAIL 2 1:5

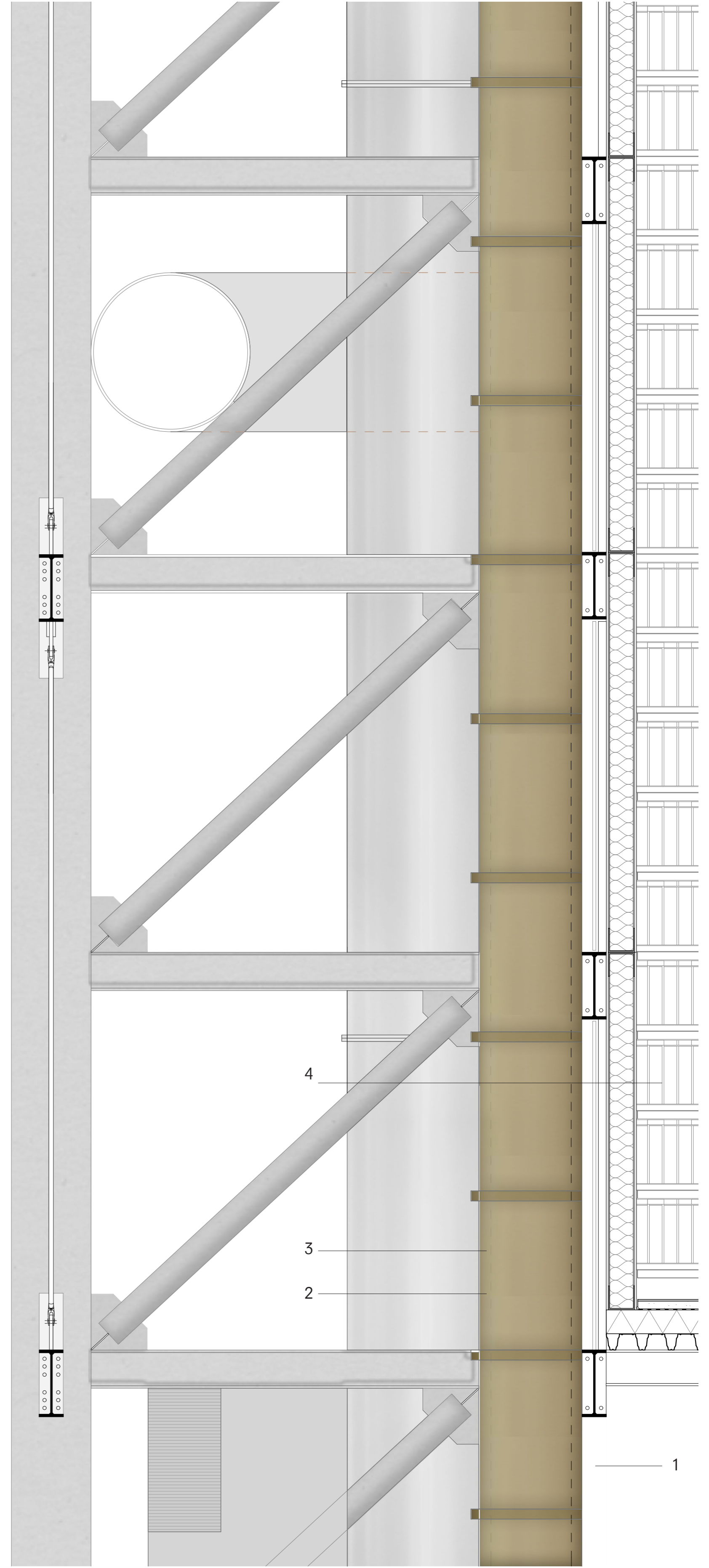




FACADE STORAGE 1:20



VERTICAL SECTION 1:20



DETAIL 3 1:5

**SECTION 1:20**

- 1 Hollow Section 800 mm
- 2 Package elevators 600/450 mm
- 3 Main ventilation duct Ø 1500 mm
- 4 Autostore Shelf System 600/450 mm

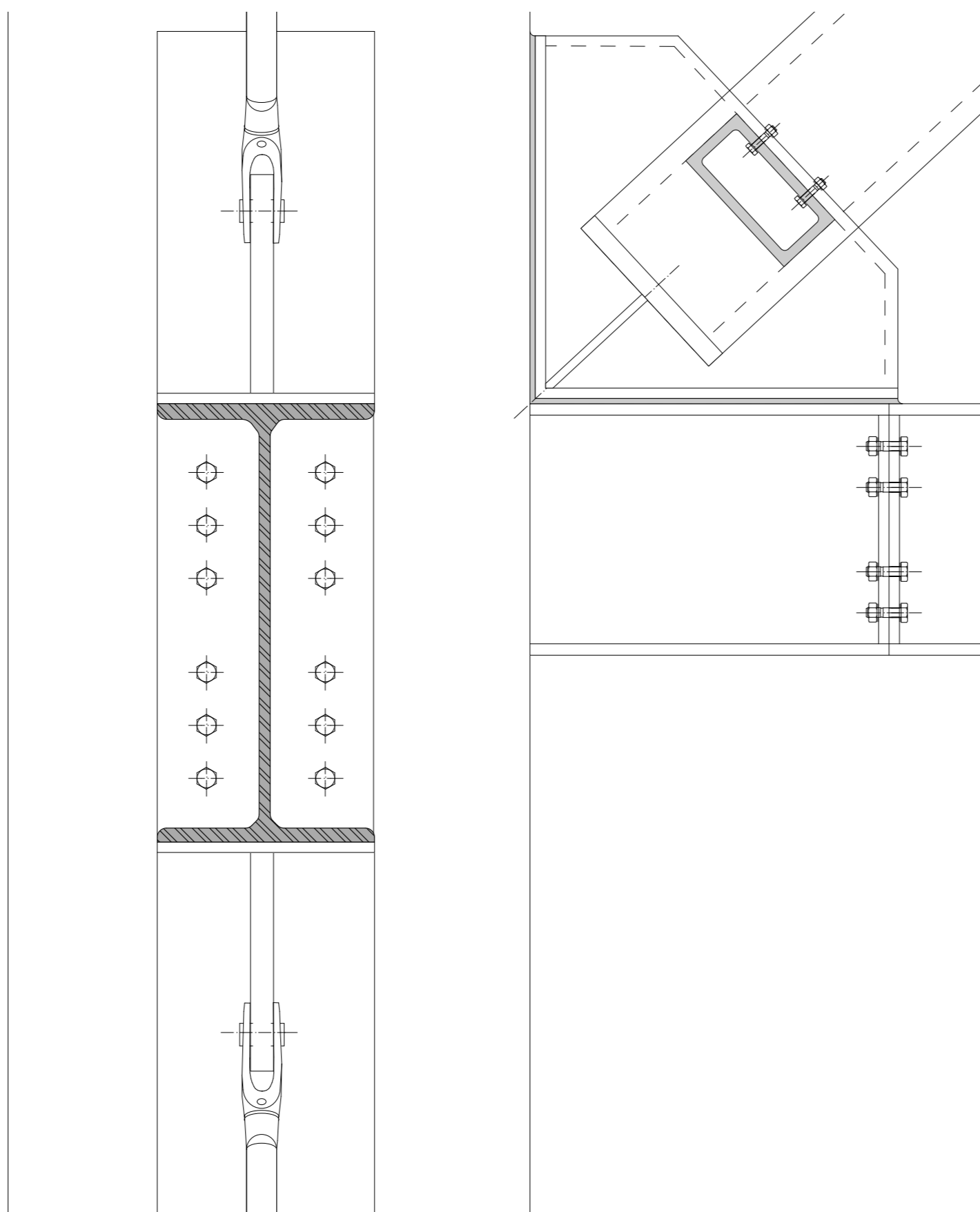
**DETAIL 3 1:5**

- Hollow Section 500 mm
- HEB 420 mm
- HEB 240 mm
- Bracing tube hollow section 180 mm

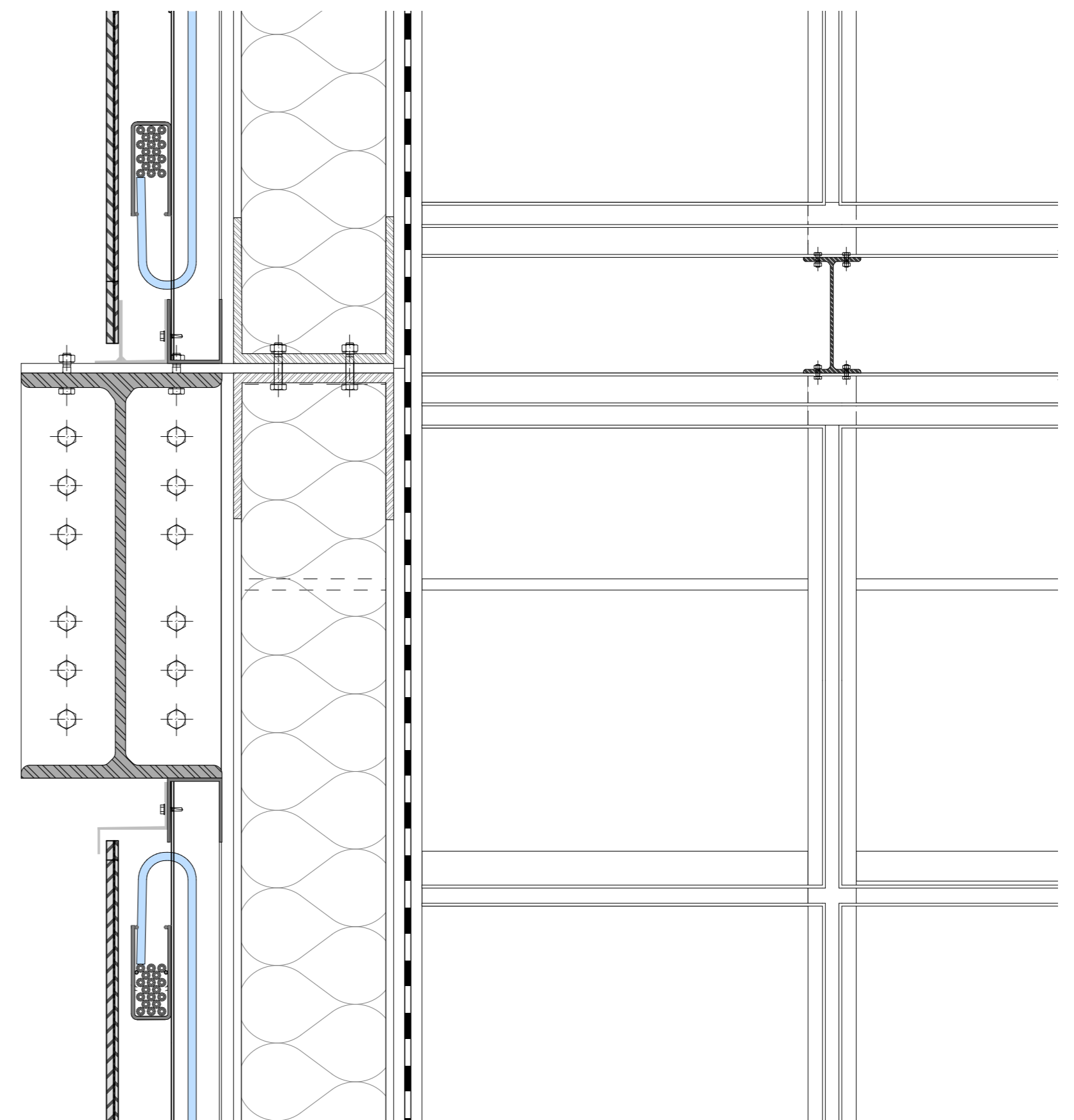
**DETAIL 4 1:5**

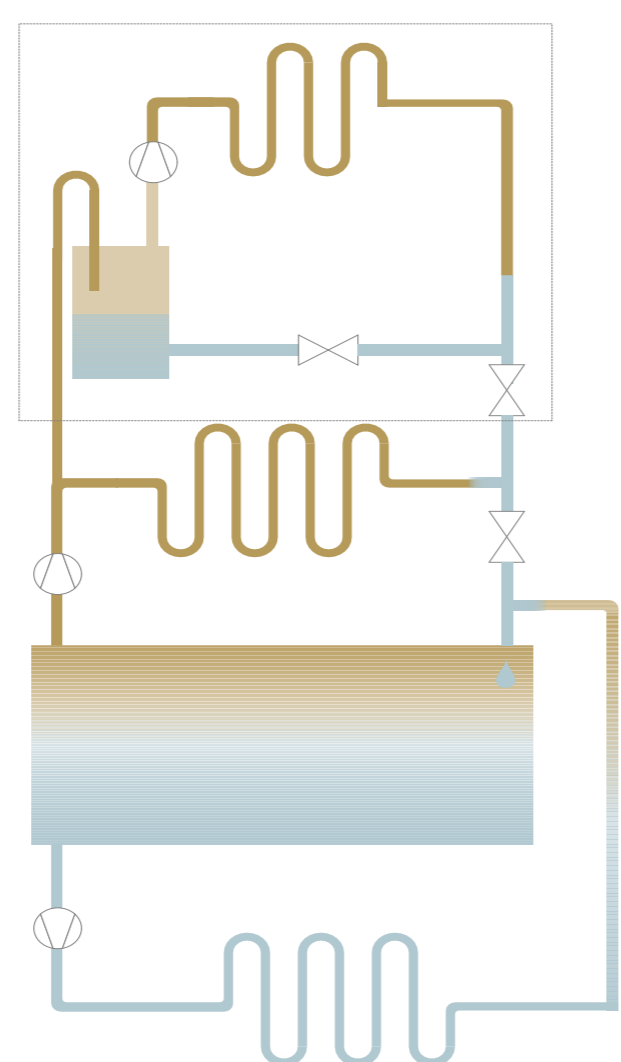
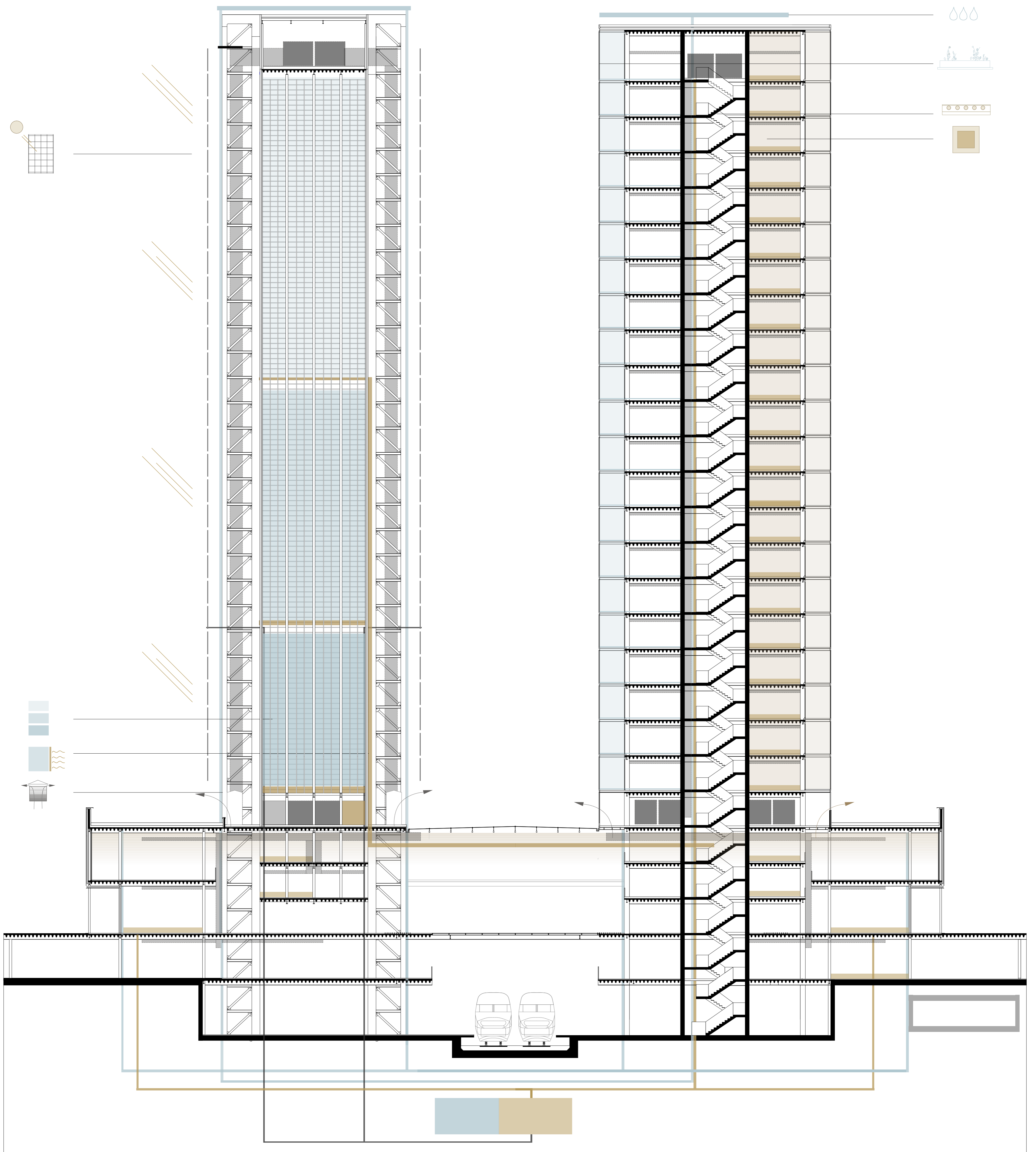
- HEB 420

- 19 mm PV panel system
- Structural gypsum board
- Steel facade construction
- CW 150 mm, 1.5 mm
- UW 150 mm, 1.5 mm
- Insulation
- 140 mm Gypsum board
- 12 mm PE film



DETAIL 4 1:5





WASTE HEAT RECOVERY

