

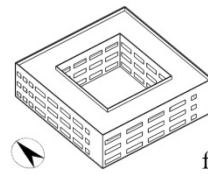
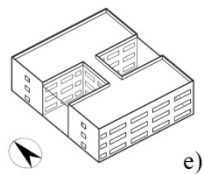
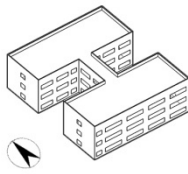
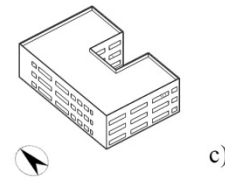
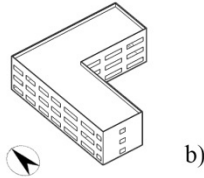
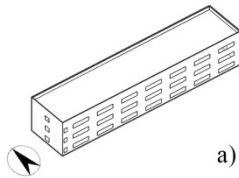
Questionnaire on the Visual Preference for School Building Geometry Parameters

We would like to know your visual preferences for the geometry parameters of school buildings. The questionnaire is anonymous, and the results will only be used for our research. Thank you for your valuable time.

Please score the following questions according to your subjective feeling; the score is divided into seven levels. (-3 = strongly disapproval, -2 = disapproval, -1 = slightly disagree, 0 = neutral, +1 = slightly agree, +2 = agree, +3 = strongly agree, please mark \surd under your option.)

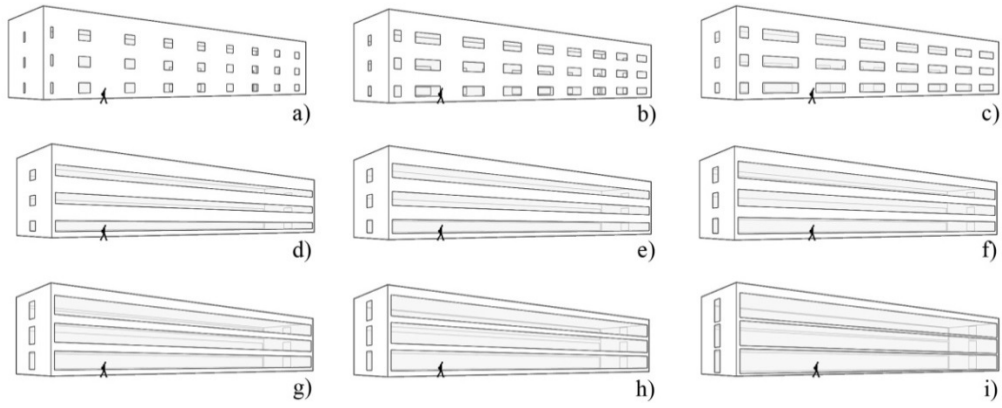
1. Do you like the shape of the following school buildings? Please give your opinion.

Rectangle	Figure a)	-3	-2	-1	0	+1	+2	+3
L shape	Figure b)	-3	-2	-1	0	+1	+2	+3
C shape	Figure c)	-3	-2	-1	0	+1	+2	+3
H shape	Figure d)	-3	-2	-1	0	+1	+2	+3
H shape with atrium	Figure e)	-3	-2	-1	0	+1	+2	+3
Courtyard	Figure f)	-3	-2	-1	0	+1	+2	+3
Highrise	Figure g)	-3	-2	-1	0	+1	+2	+3



2. Do you like the facades of the following school buildings in terms of window to wall ratio (WWR)? Please give your opinion.

WWR: 10%	Figure a)	-3	-2	-1	0	+1	+2	+3
WWR: 20%	Figure b)	-3	-2	-1	0	+1	+2	+3
WWR: 30%	Figure c)	-3	-2	-1	0	+1	+2	+3
WWR: 40%	Figure d)	-3	-2	-1	0	+1	+2	+3
WWR: 50%	Figure e)	-3	-2	-1	0	+1	+2	+3
WWR: 60%	Figure f)	-3	-2	-1	0	+1	+2	+3
WWR: 70%	Figure g)	-3	-2	-1	0	+1	+2	+3
WWR: 80%	Figure h)	-3	-2	-1	0	+1	+2	+3
WWR: 90%	Figure i)	-3	-2	-1	0	+1	+2	+3



3. Do you like the following classrooms in terms of room depth? Please give your opinion.

Room depth: 6m	Figure a)	-3	-2	-1	0	+1	+2	+3
Room depth: 8m	Figure b)	-3	-2	-1	0	+1	+2	+3
Room depth: 10m	Figure c)	-3	-2	-1	0	+1	+2	+3
Room depth: 12m	Figure d)	-3	-2	-1	0	+1	+2	+3



4. Which orientation would you like the school buildings face? Please give your opinion.

South	-3	-2	-1	0	+1	+2	+3
West	-3	-2	-1	0	+1	+2	+3
North	-3	-2	-1	0	+1	+2	+3
East	-3	-2	-1	0	+1	+2	+3

5. Which of the following design parameters do you pay more attention on? Please give your opinion.

Building shape	-3	-2	-1	0	+1	+2	+3
WWR	-3	-2	-1	0	+1	+2	+3
Room depth	-3	-2	-1	0	+1	+2	+3
Orientation	-3	-2	-1	0	+1	+2	+3

6. Do you think the above design parameters (building shape, WWR, classroom depth and building orientation) will have an effect on your study or work? Please give your opinion.

- a) obviously effect b) maybe c) obviously no effect

Your basic situation:

Gender: Male Female

Age: <10 10 - 20 20 - 30 30 - 40 40 - 50 >50

Education: Primary school Junior high school High school Undergraduate Master and above

Identity: student teacher student parents other