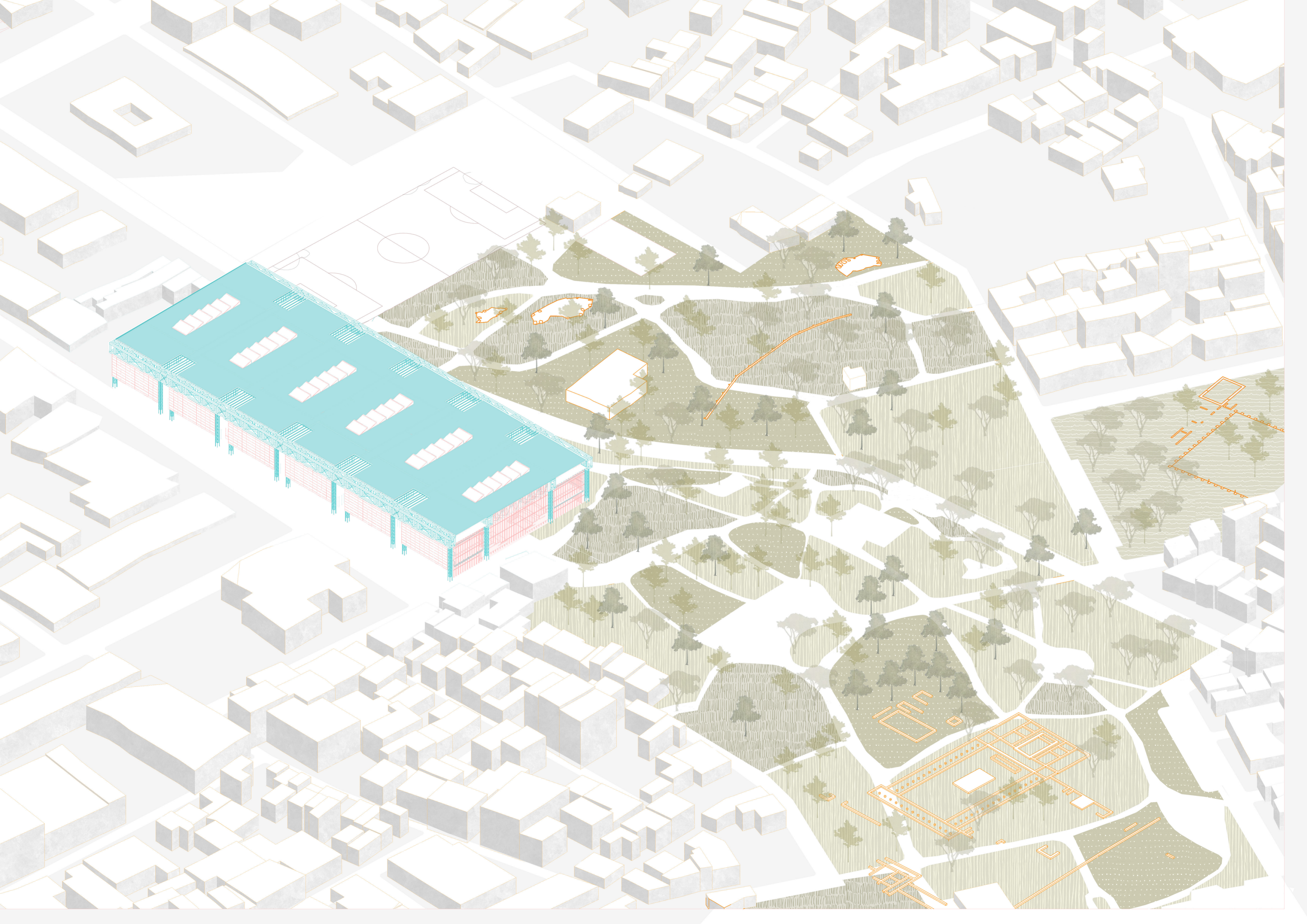
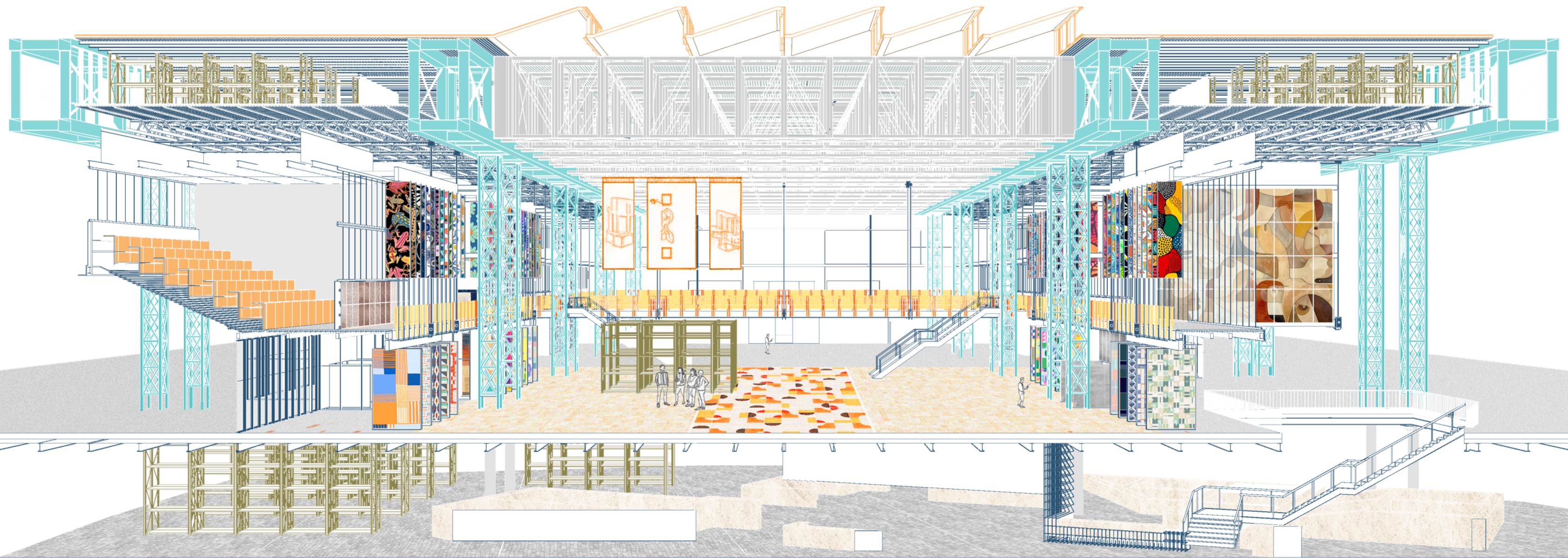


Never finish

A plug-and-play institution building full-scale repairs
for Athens

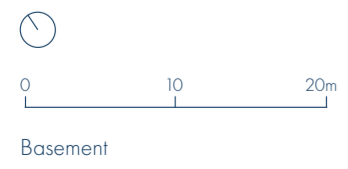
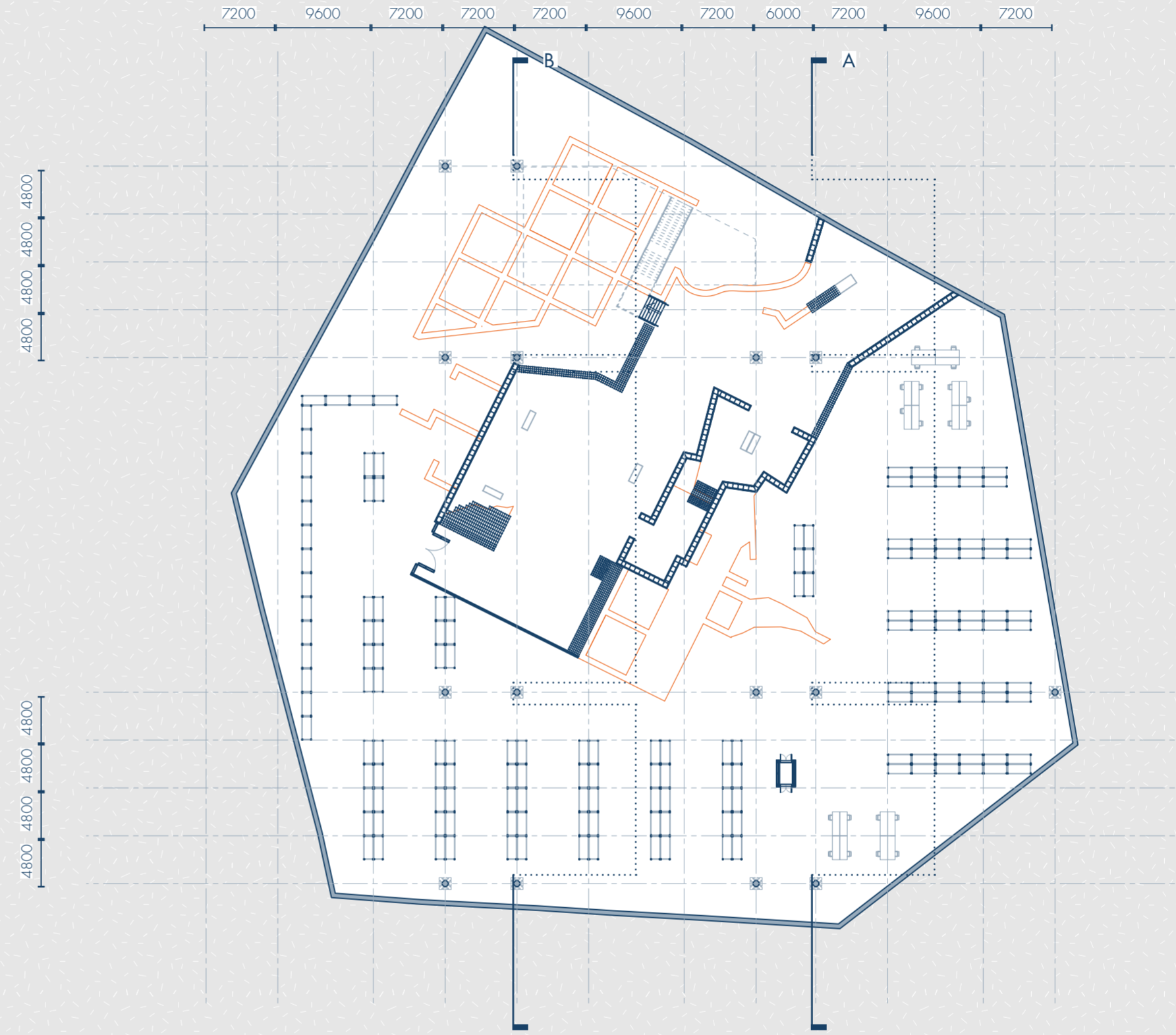




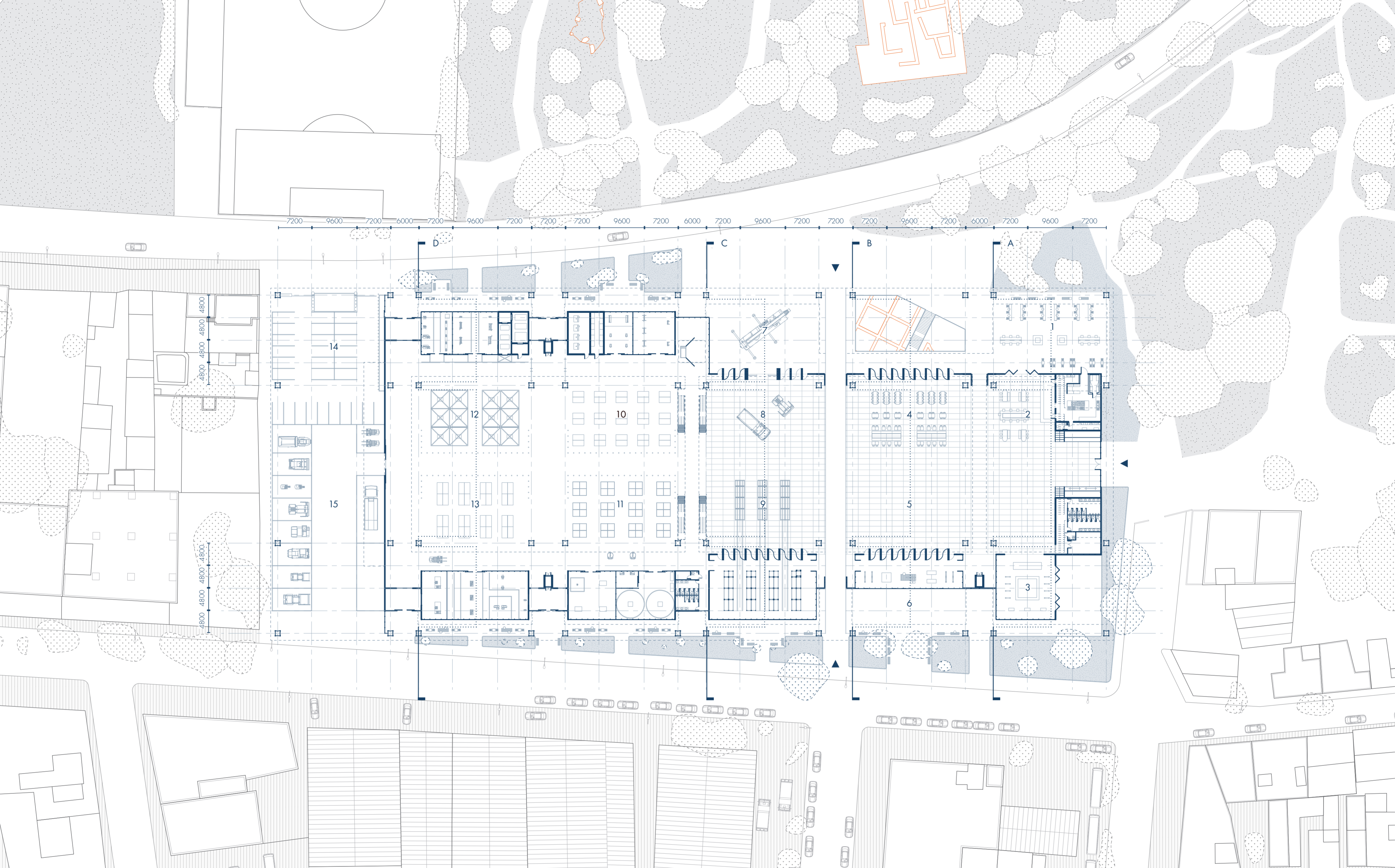


0 50 100m

Plato's Academy Park Master plan

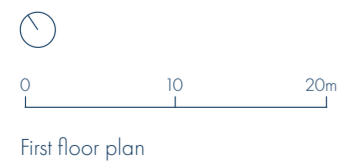
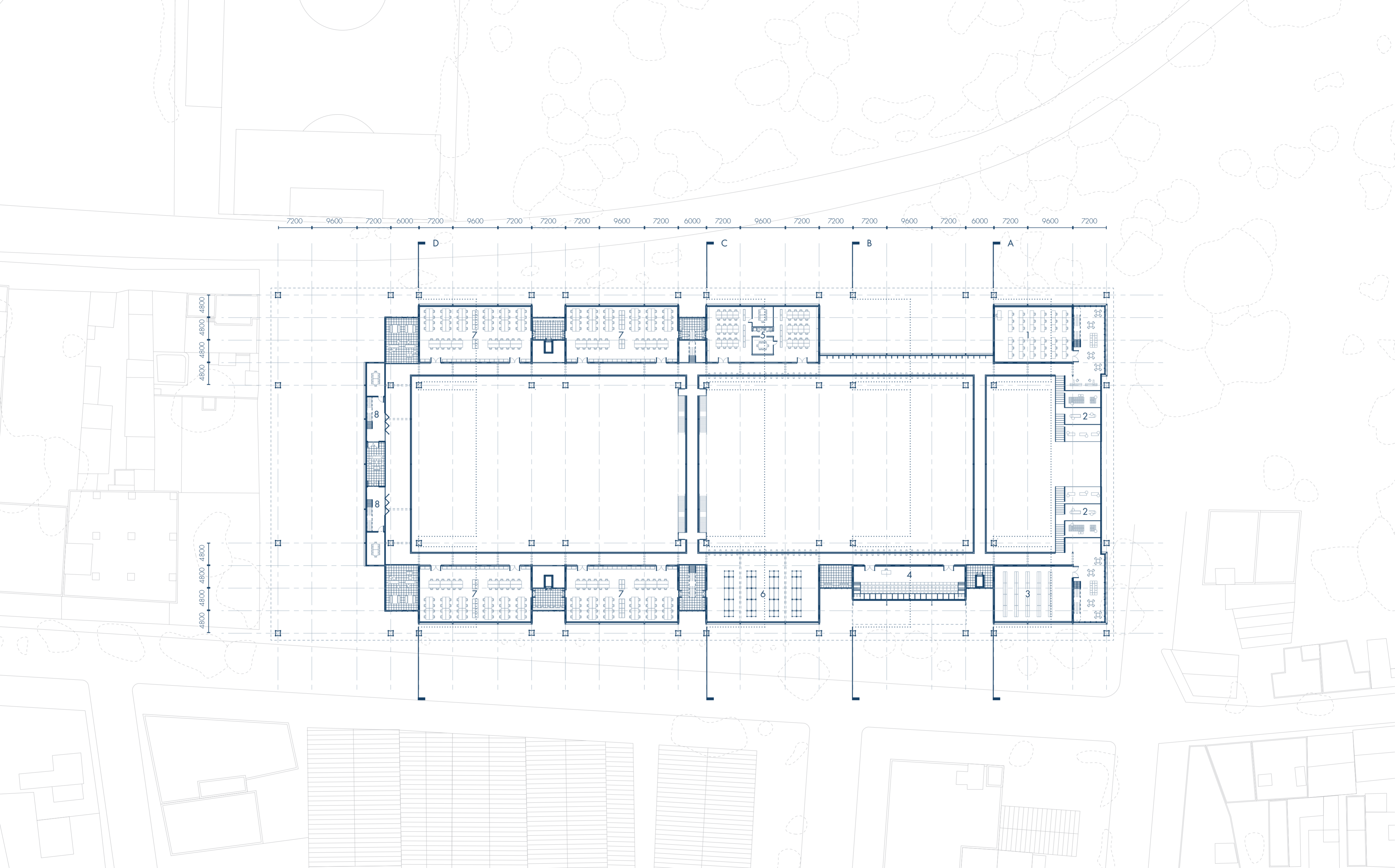


Basement



0 10 20m
Ground floor plan

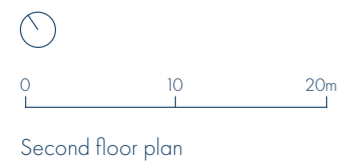
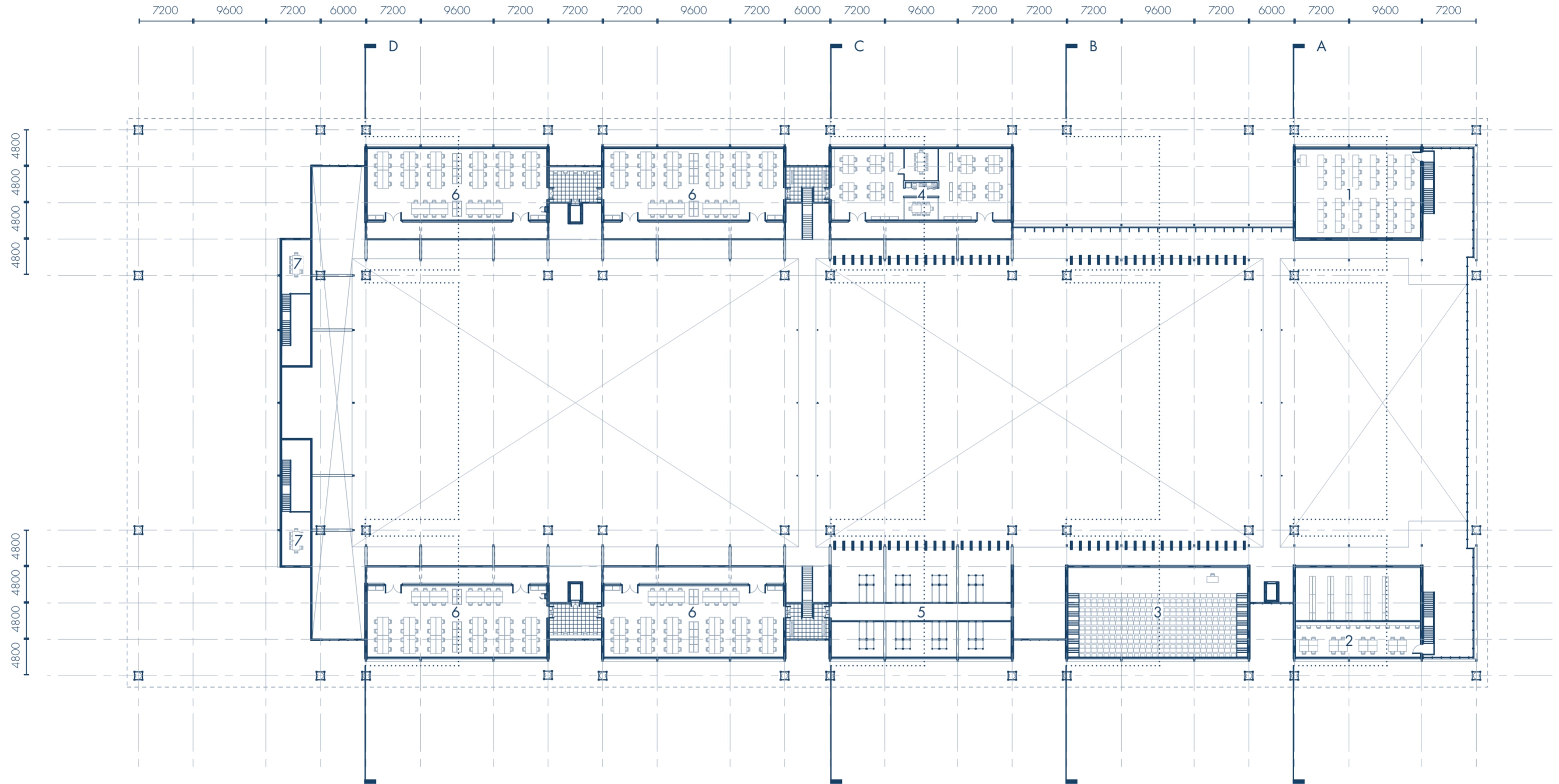
- 1. Cafe Terrace
- 2. Food Counter
- 3. Pocket Gallery
- 4. Dining Hall
- 5. Main Gallery
- 6. Exhibition Terrace
- 7. Crane Yard
- 8. Vehicle Gallery
- 9. Student Archive
- 10. Ceramic Lab
- 11. Concrete Lab
- 12. Metal Workshop
- 13. Timber Workshop
- 14. Staff Parking
- 15. Dispatch Center



First floor plan

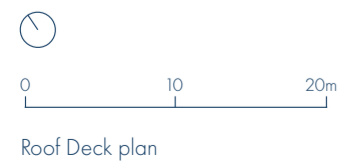
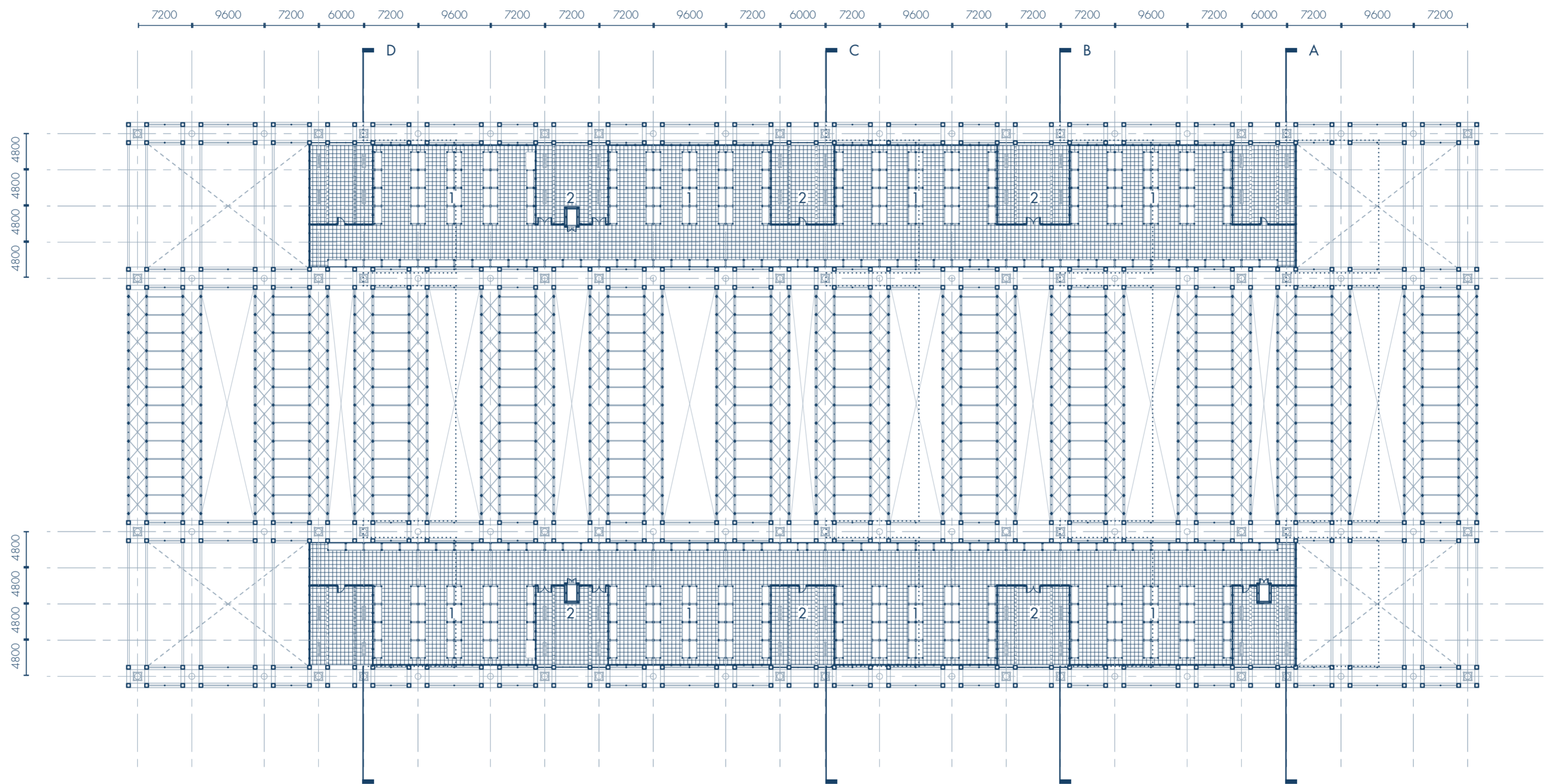
- 1. Classroom
- 2. Exhibition stairs
- 3. Library
- 4. Lecture Hall
- 5. Staff Office
- 6. Student Archive
- 7. Studio

- 8. Student Council

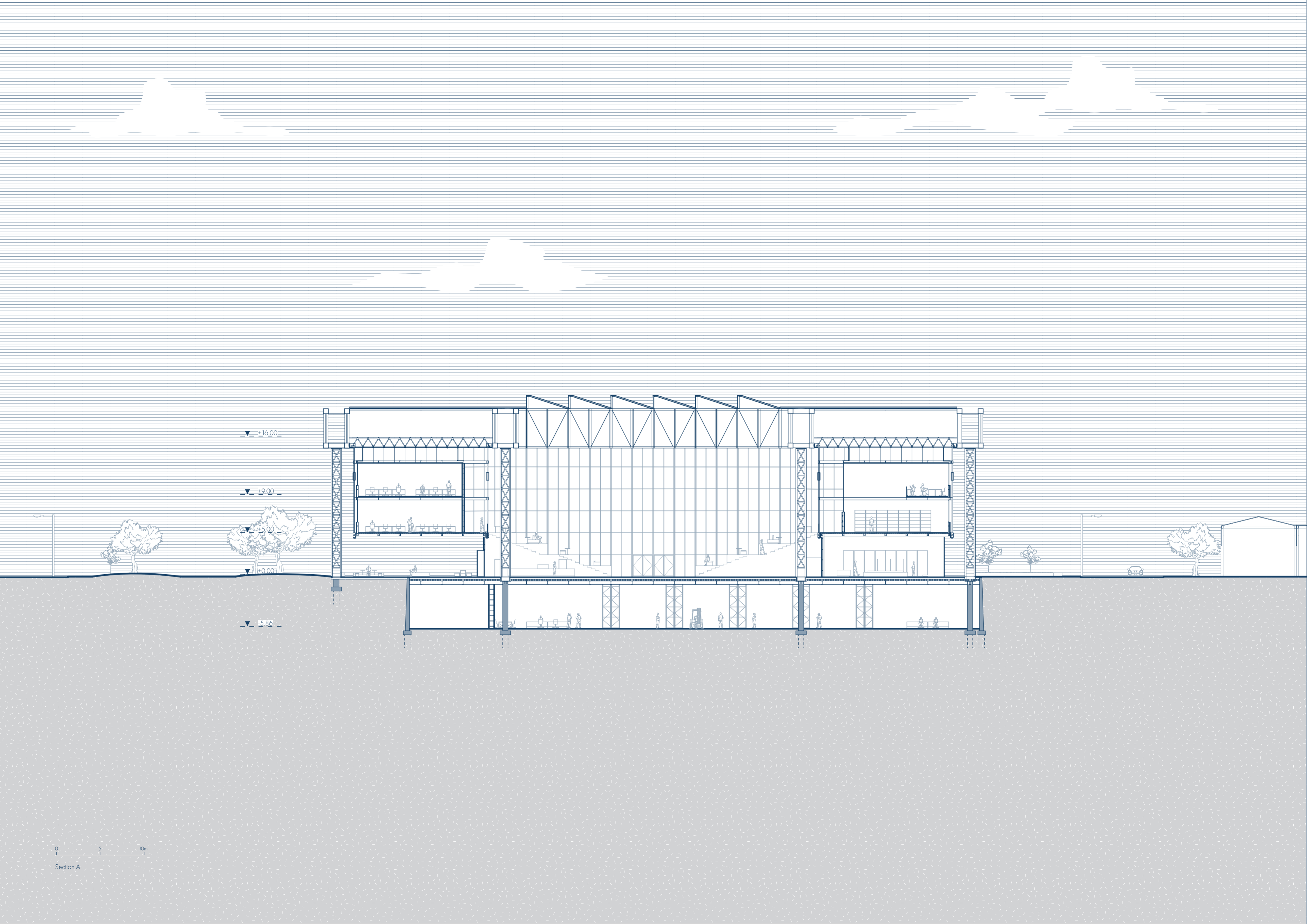


Second floor plan

- 1. Classroom
- 2. Study Area
- 3. Lecture Hall
- 4. Municipal Collaboration
- 5. Student Archive
- 6. Studio
- 7. Council Room

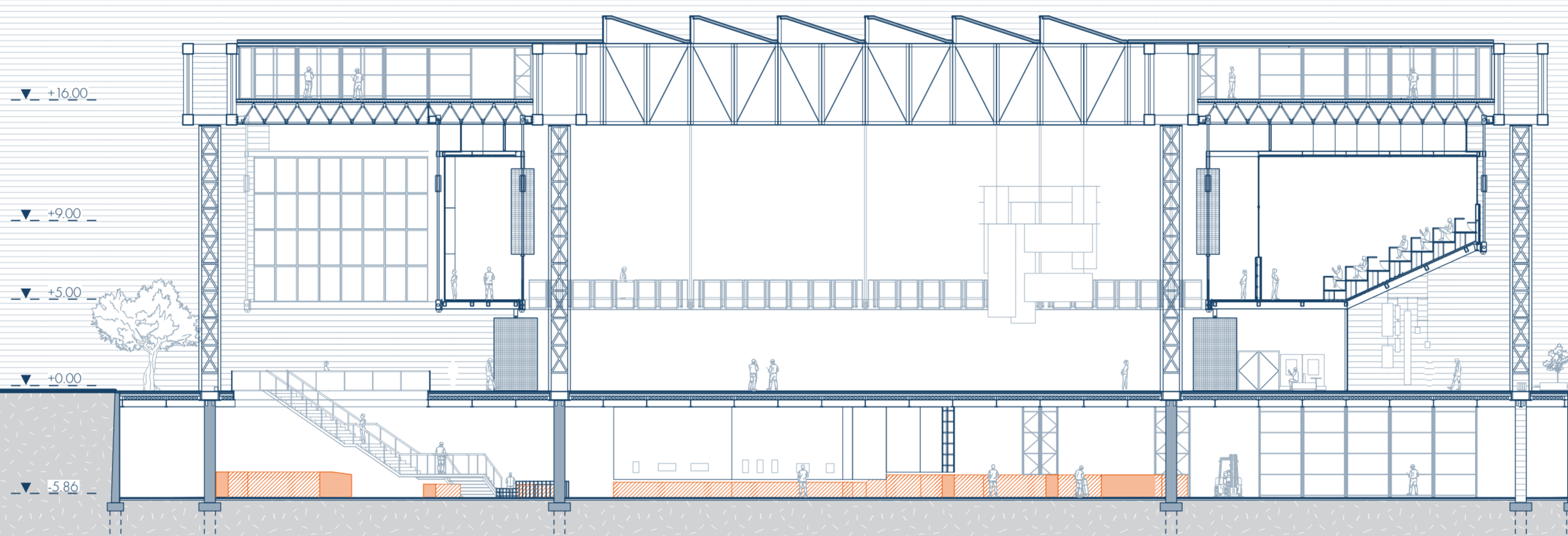


1. Material Archive / Student Archive
 2. Outdoor Testing Lab



0 5 10m

Section A



▼ +16.00

▼ +9.00

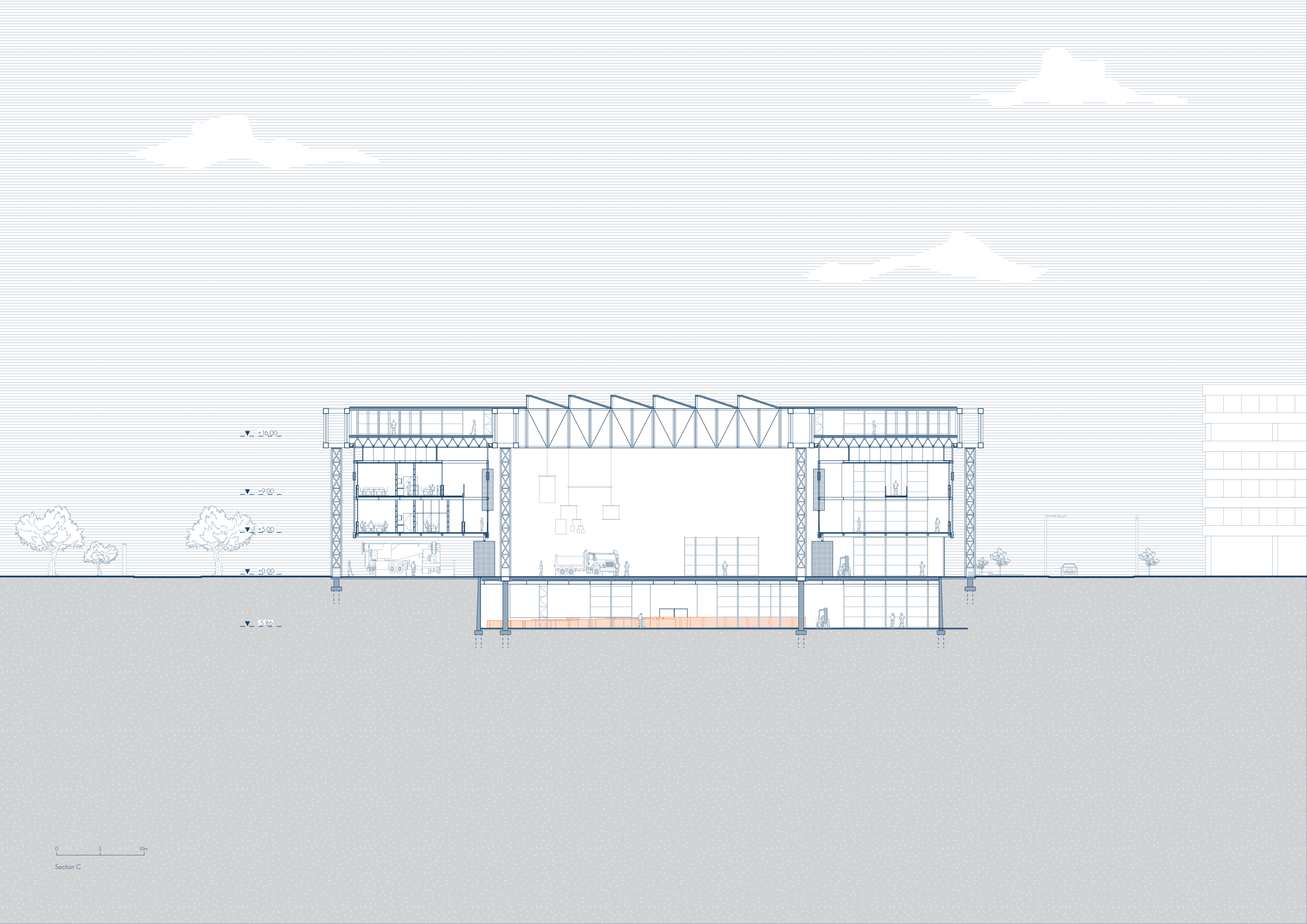
▼ +5.00

▼ +0.00

▼ -5.86

0 5 10m

Section B



▼ +16.00

▼ +9.00

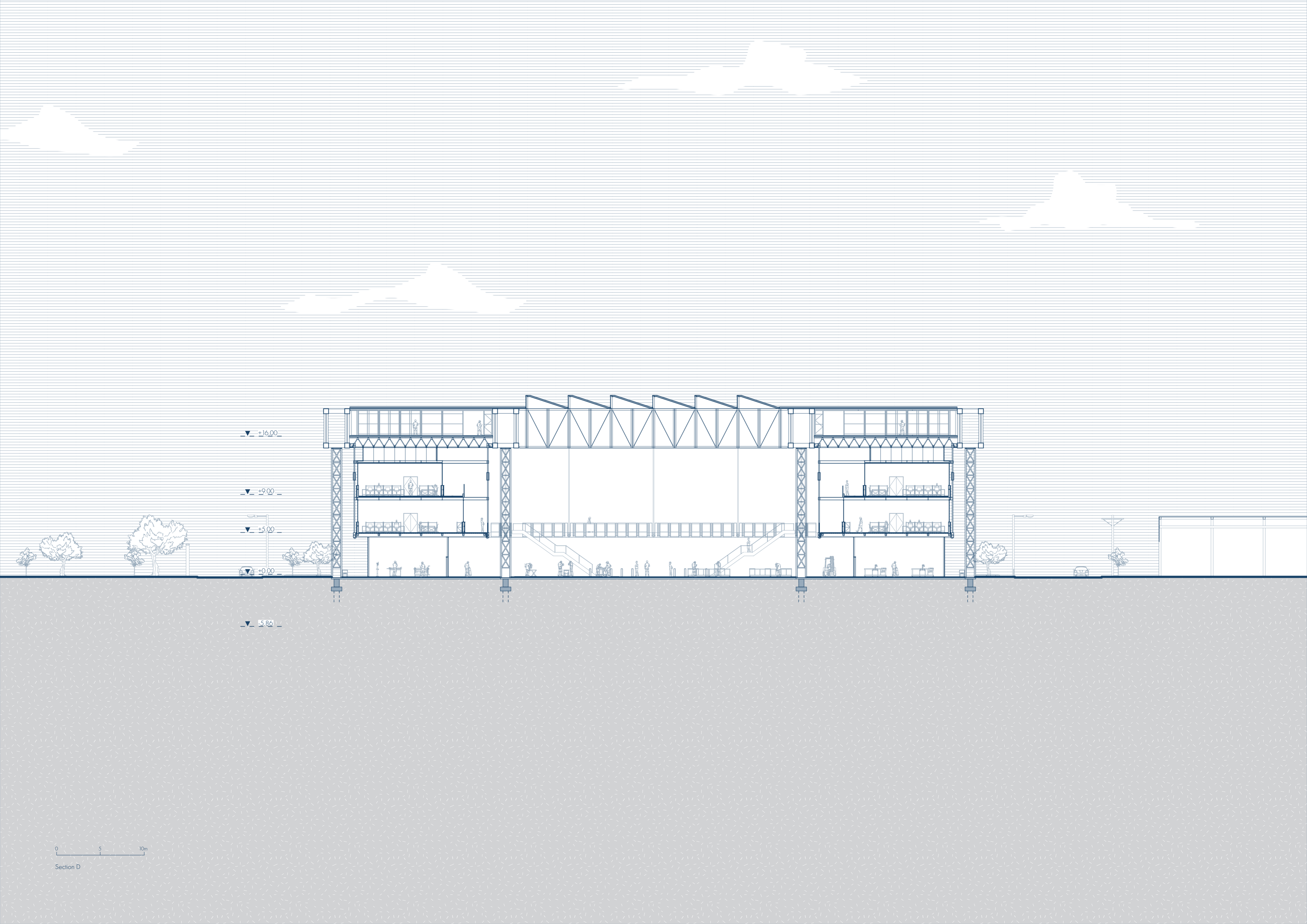
▼ +5.00

▼ +0.00

▼ -5.86

0 5 10m

Section C



▼ +16.00

▼ +9.00

▼ +5.00

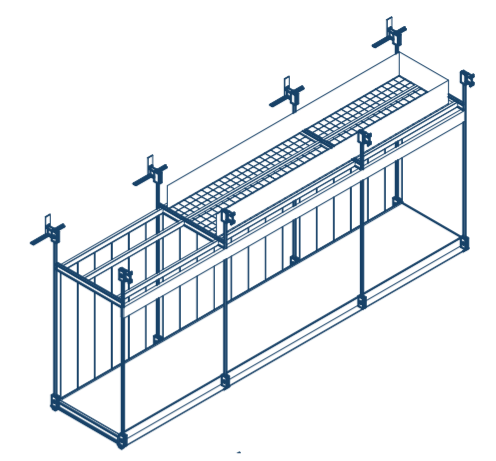
▼ +0.00

▼ -5.86

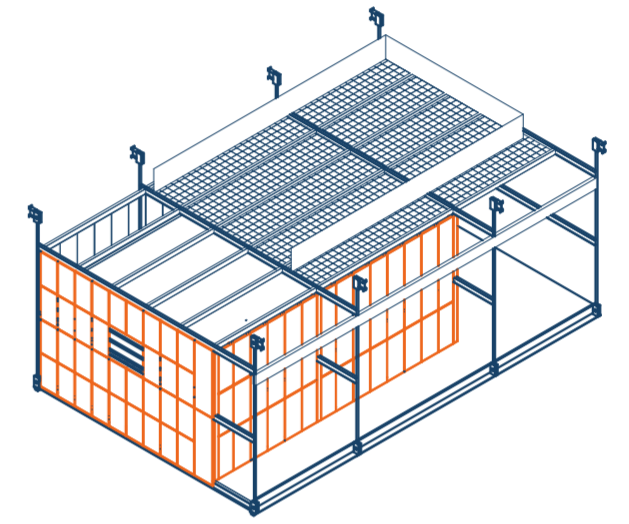
0 5 10m

Section D

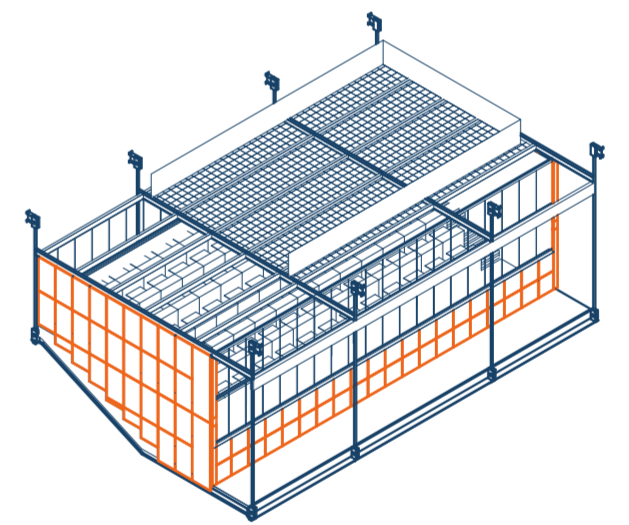
Open air material testing



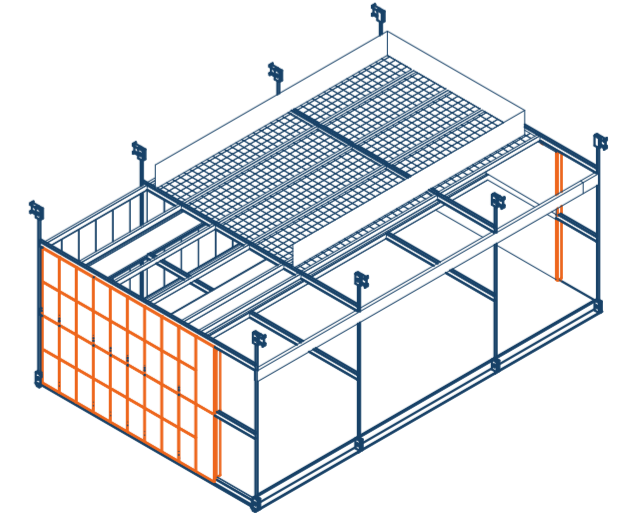
Ruins Overlook



Classroom



Lecture hall



Student Archive

Clerestory Skylights

Rotating display panel

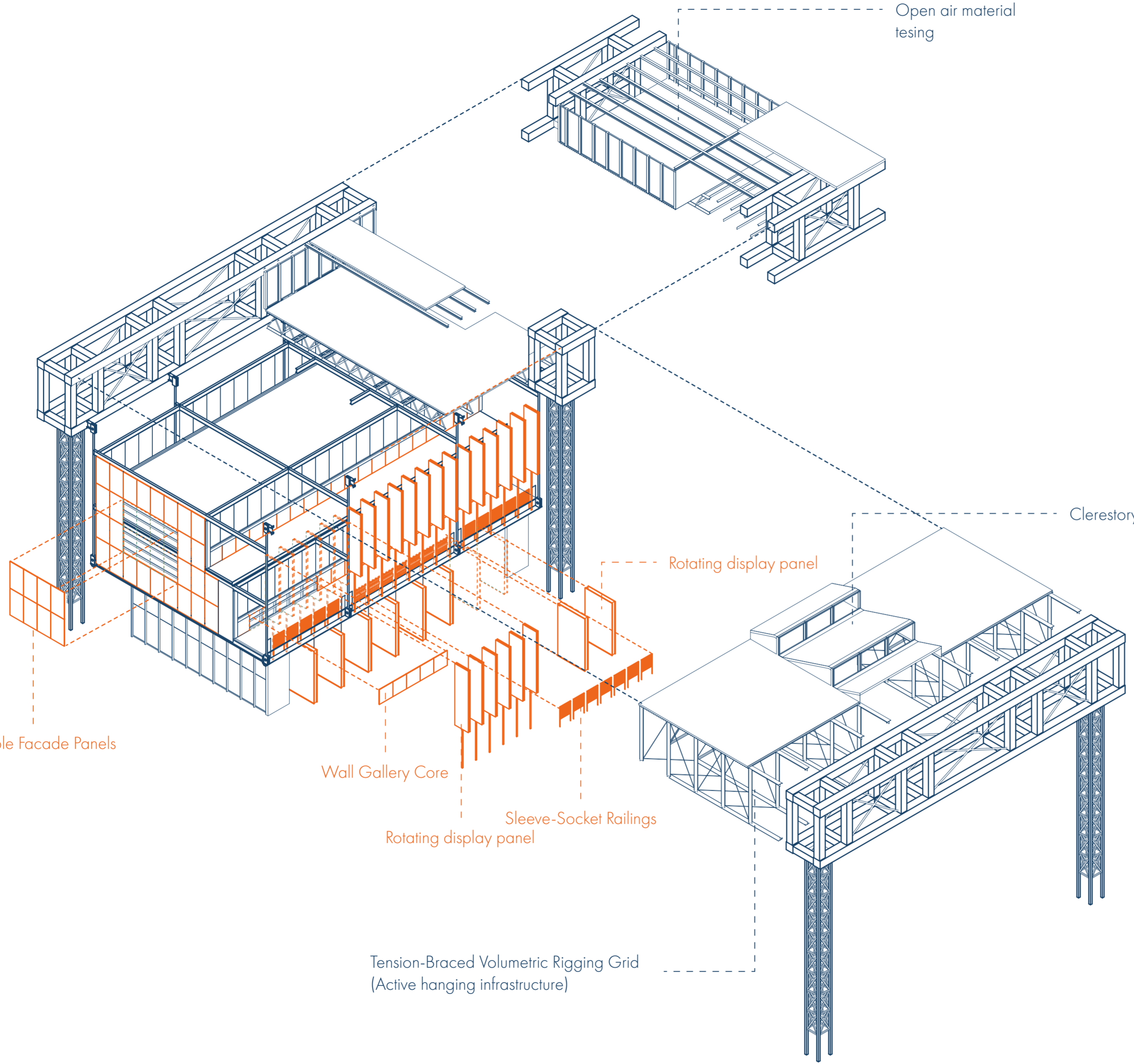
Wall Gallery Core

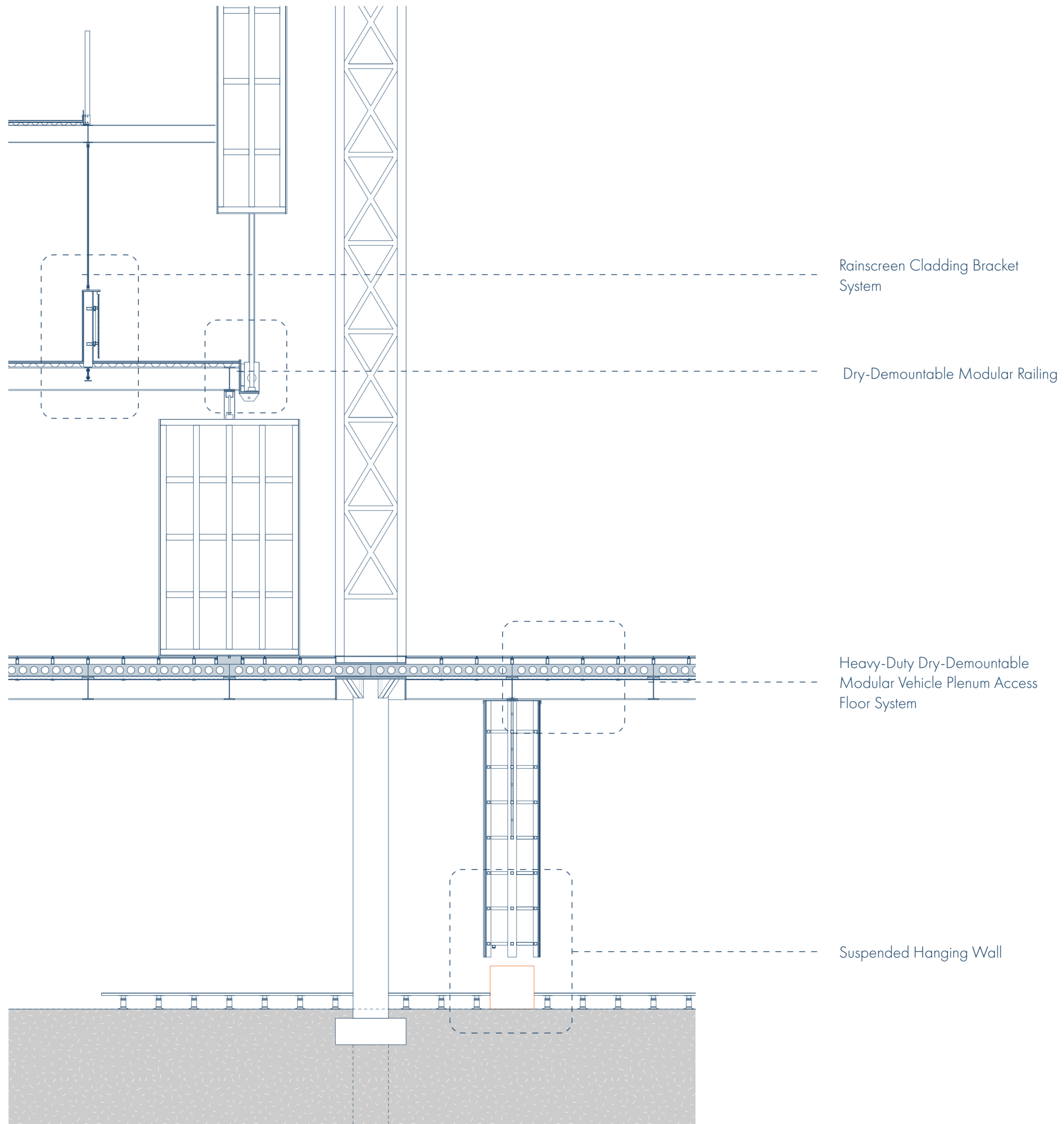
Sleeve-socket Railings

Rotating display panel

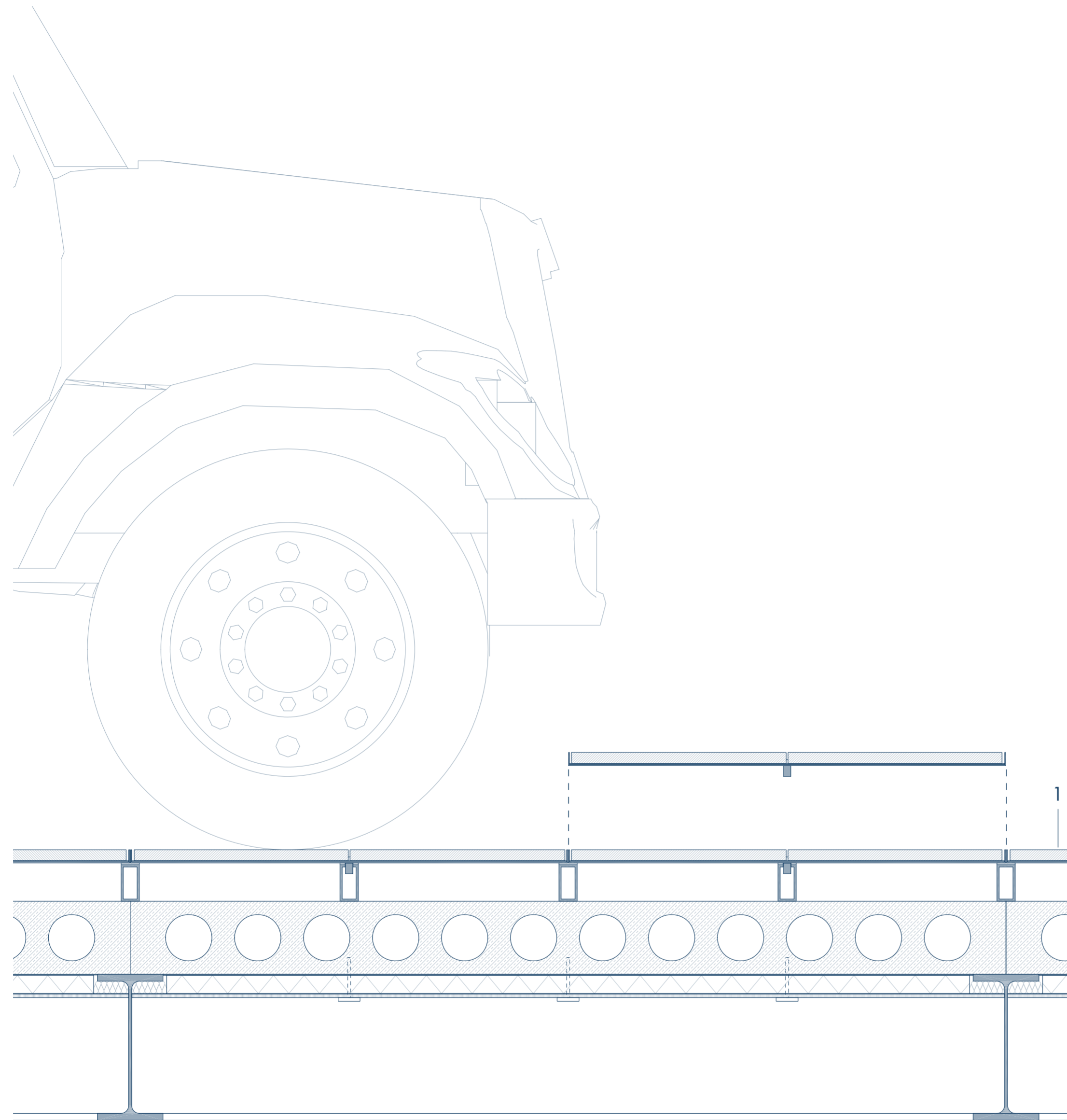
Tension-Braced Volumetric Rigging Grid (Active hanging infrastructure)

Reversible Facade Panels





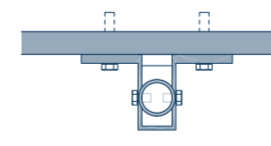
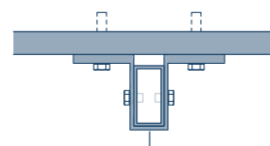
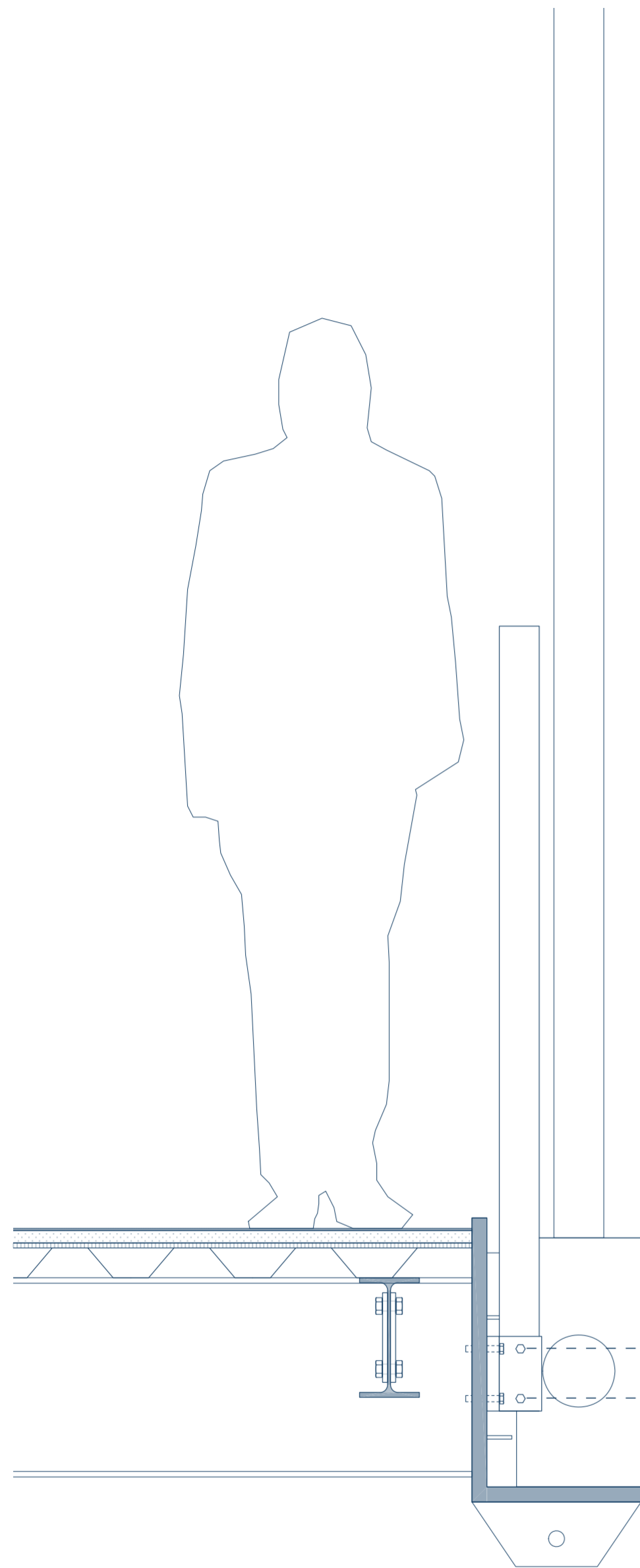
0 1 2m



Heavy-Duty Dry-Demountable Modular Vehicle Plenum Access Floor System

1. 30mm pavement tiles
- 3mm high-performance elastic polyurethane adhesive
- 3mm galvanized structural backing steel plate (1200x2400mm modular display frame)
- 5mm neoprene anti-rattle isolation gasket
- 100x50mm structural steel hollow section (RHS) modular frame
- 200mm Hollow-Core Precast Concrete Plank
- 3mm high-density rubber protection sheet
- 50mm rigid mineral wool
- 1mm EPDM vapor control membrane
- 10mm expanded steel mesh
- Primary I beam (IPE 400)

0 20 40cm



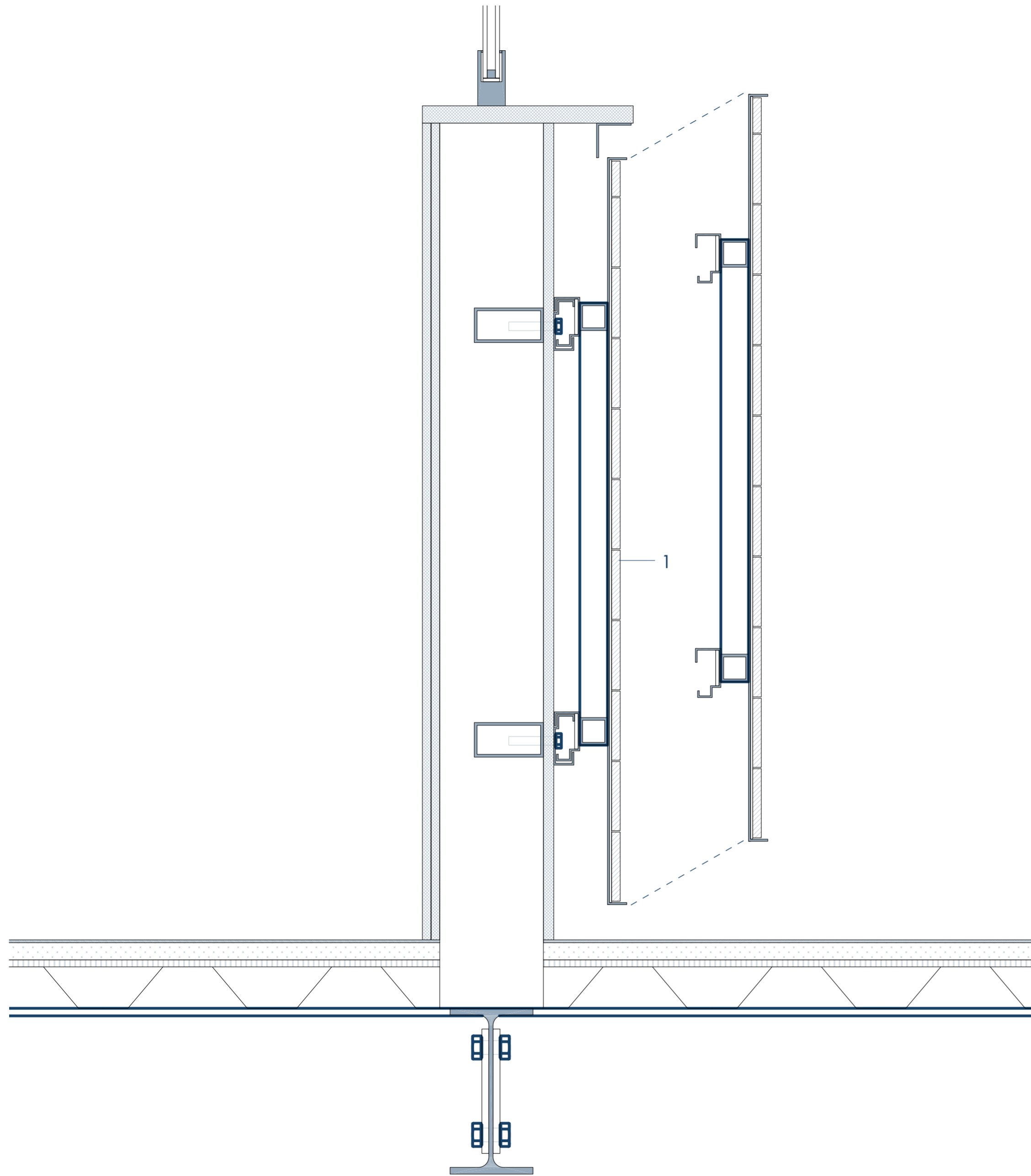
1

Rectangular bar

Round tubes

Dry-Demountable Modular Railing

1. Rectangular steel railing post (or round tube profile)
- 1 mm internal clear tolerance air gap
- Custom or standardized steel sleeve socket box
- Horizontal locking pin
- 12mm thick structural steel baseplate
- 5mm neoprene anti-rattle gasket
- 3mm steel finish frame (perimeter floor border)
- High-tensile structural through-bolts (standardized matrix)



Rainscreen Cladding Bracket System

1. 30mm Cladding panel
- 3mm high-performance elastic polyurethane adhesive
- 3mm galvanized structural backing steel plate
- Cassette Skeleton
- Horizontal support rail
- Millimeter-adjustable hanging bracket
- Cassette Cladding Hook
- 15mm Substrate Sheet
- 150x100mm Vertical profile
- 100x50mm Horizontal structural bracing
- 12mm Standard Gypsum Board
- 12mm High-Impact (or Rigid-Core) Gypsum Board

0 10 20cm