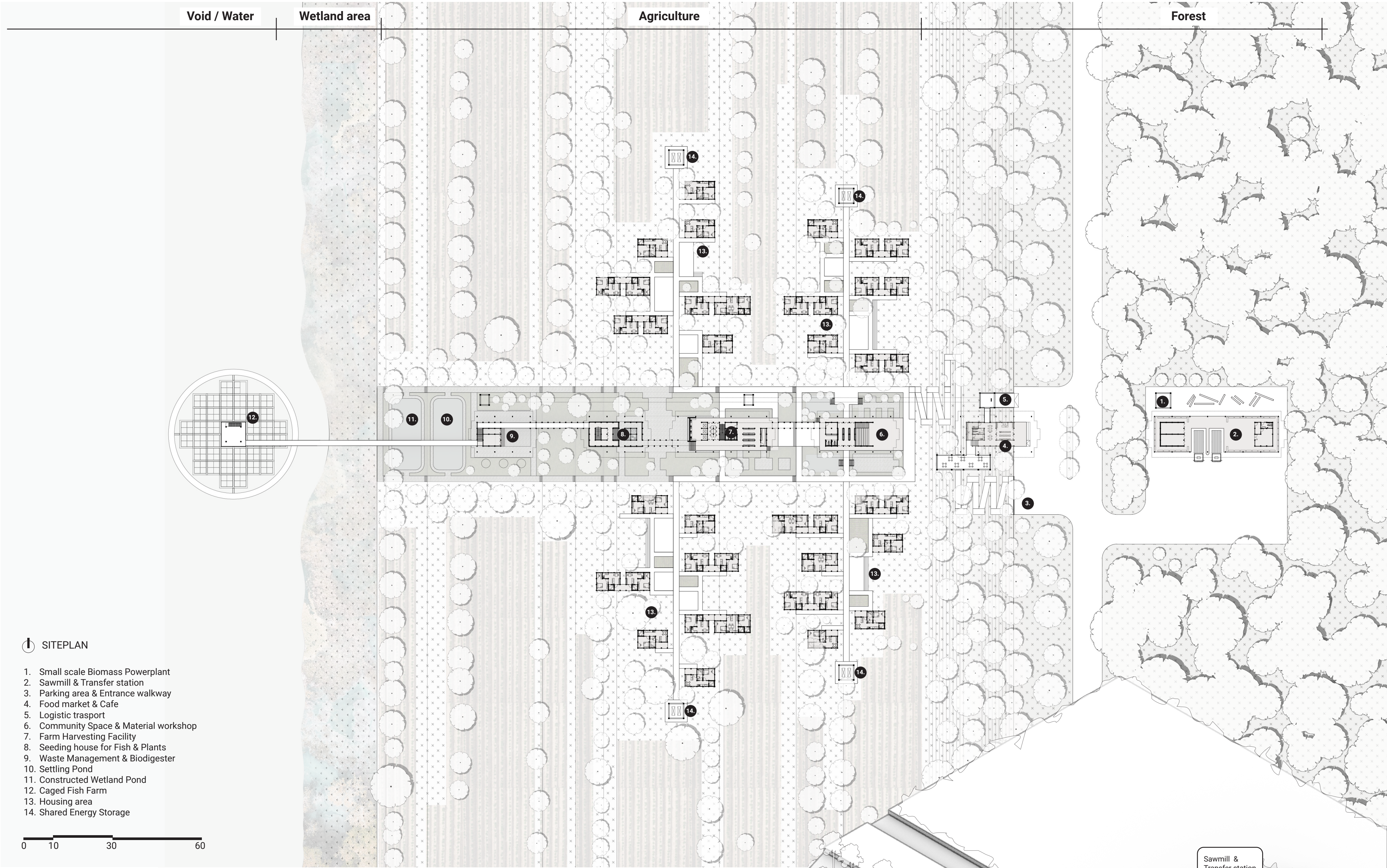
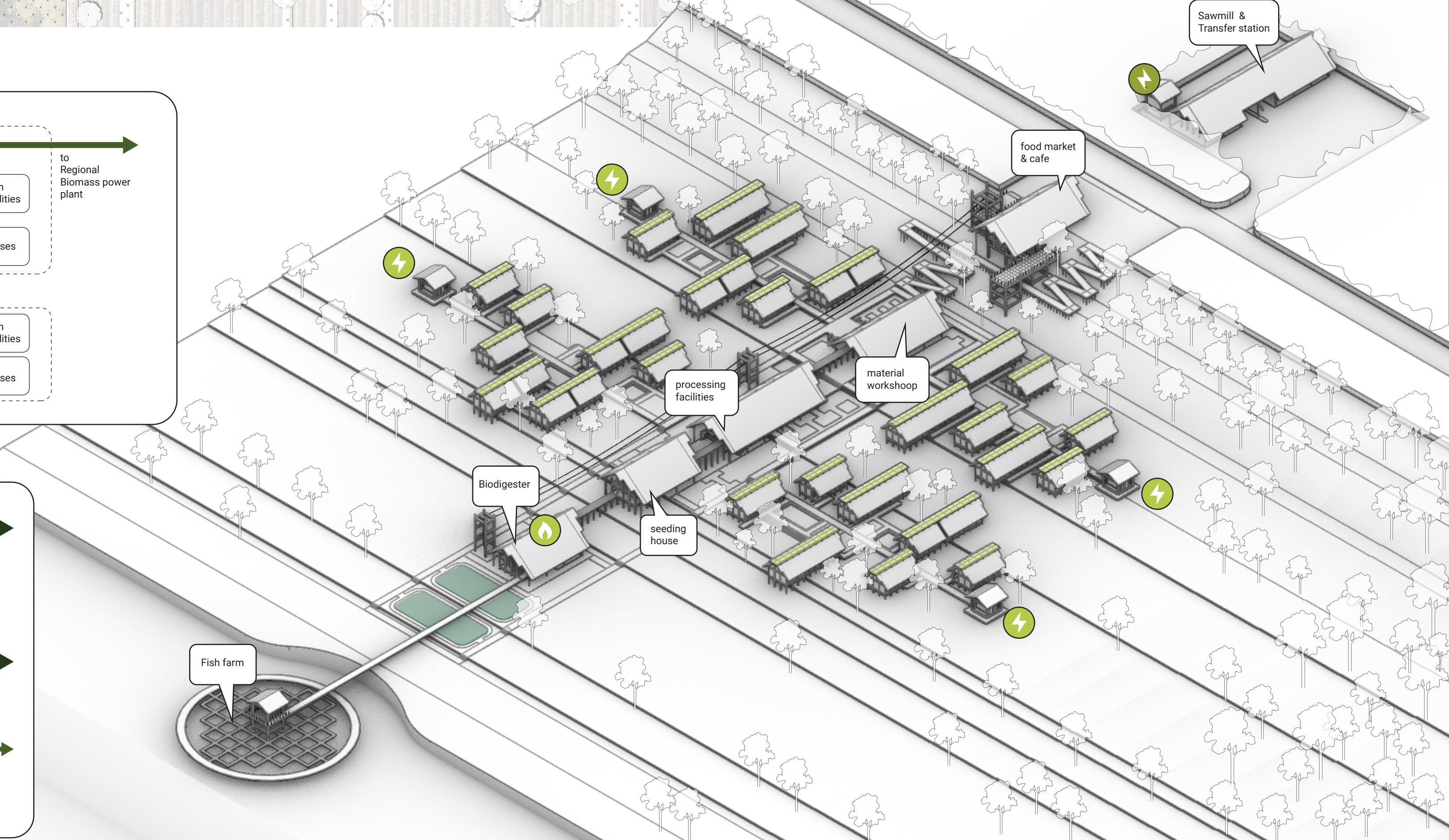
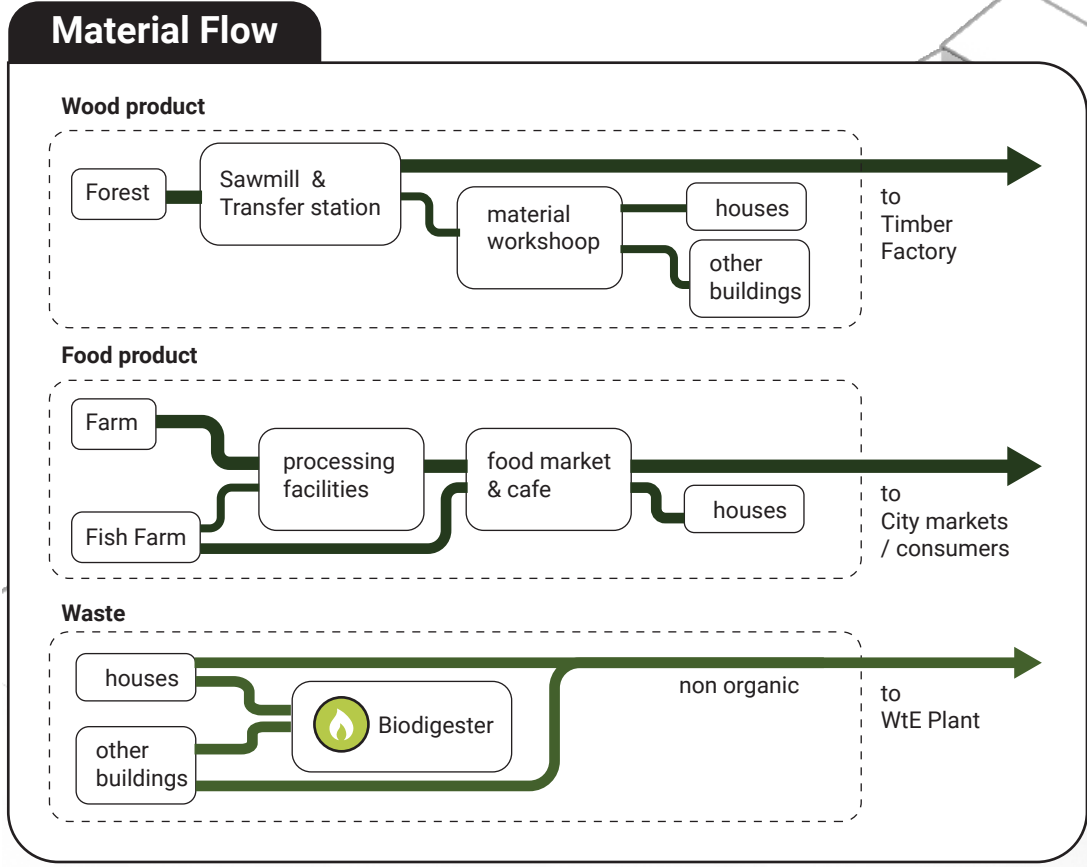
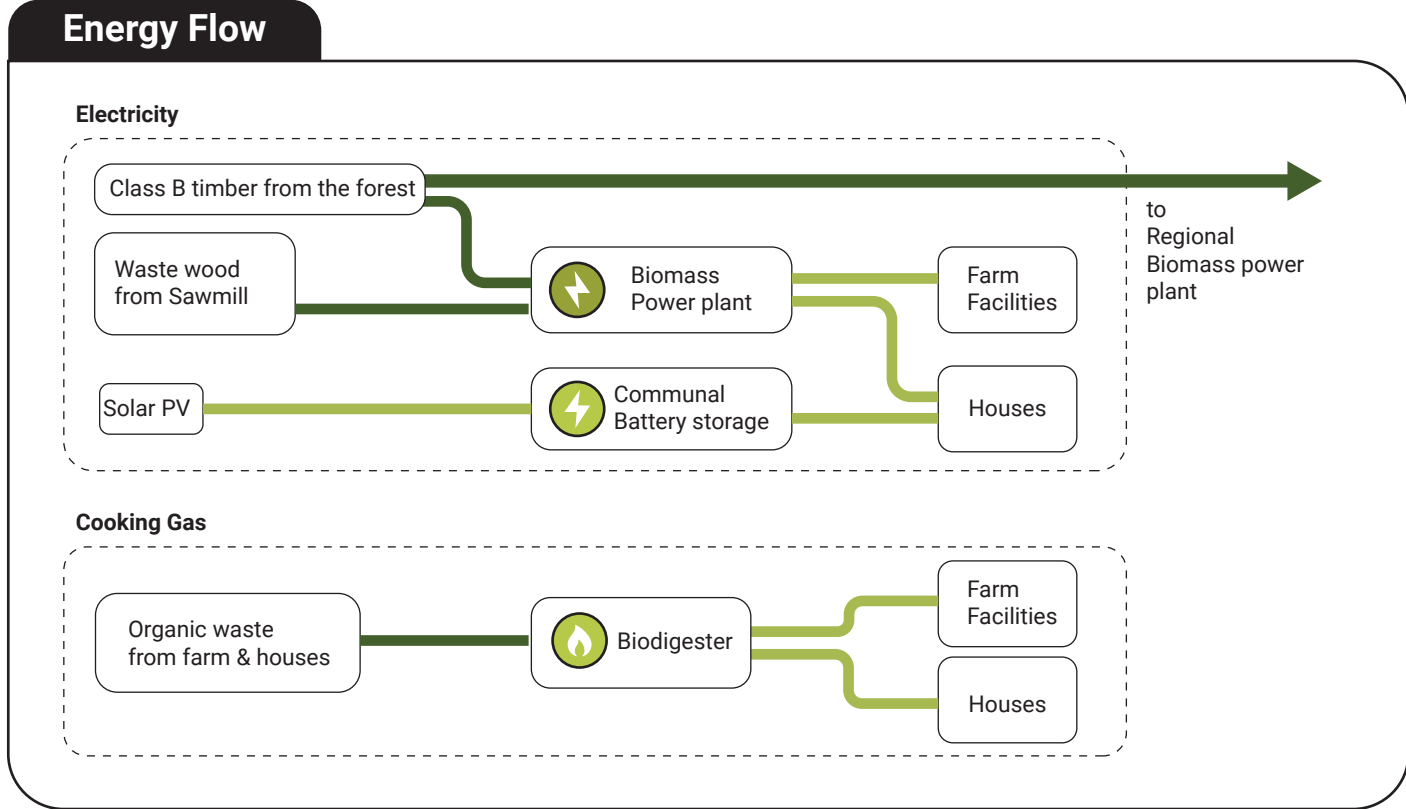


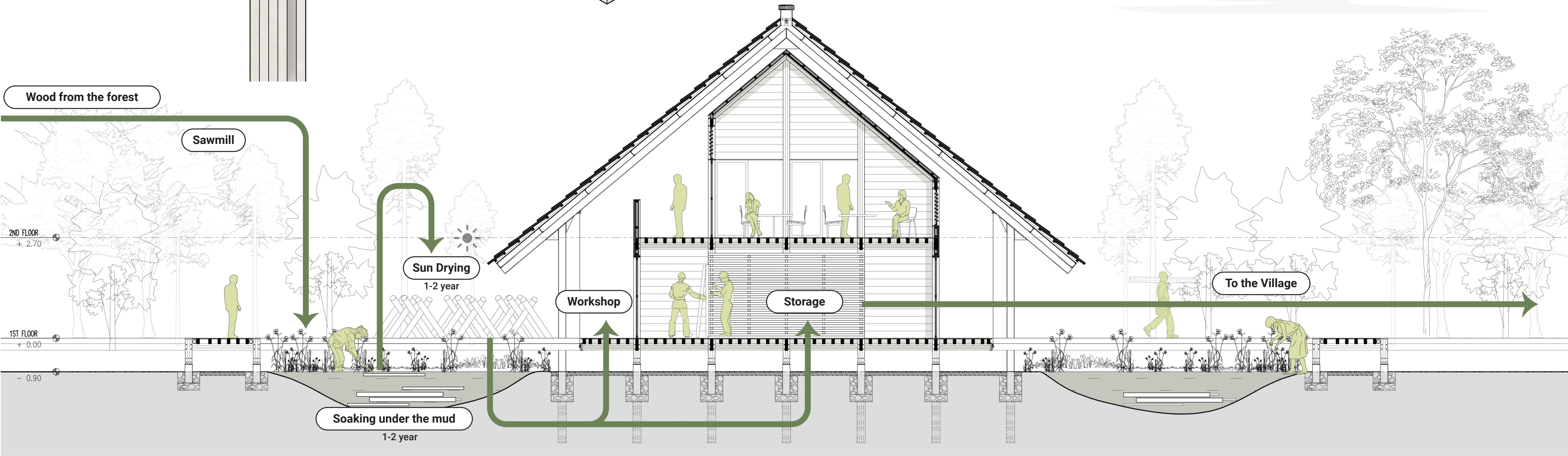
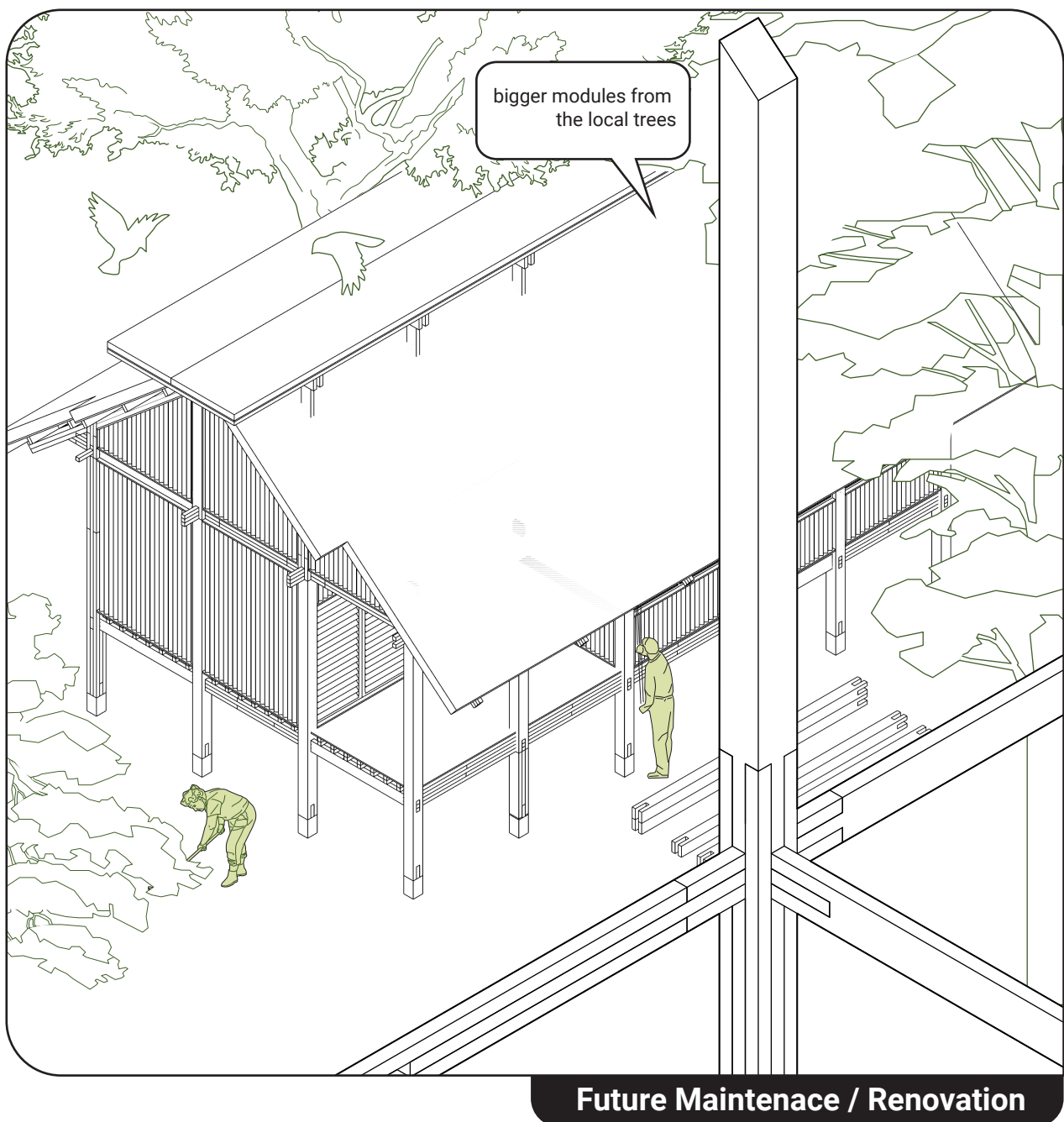
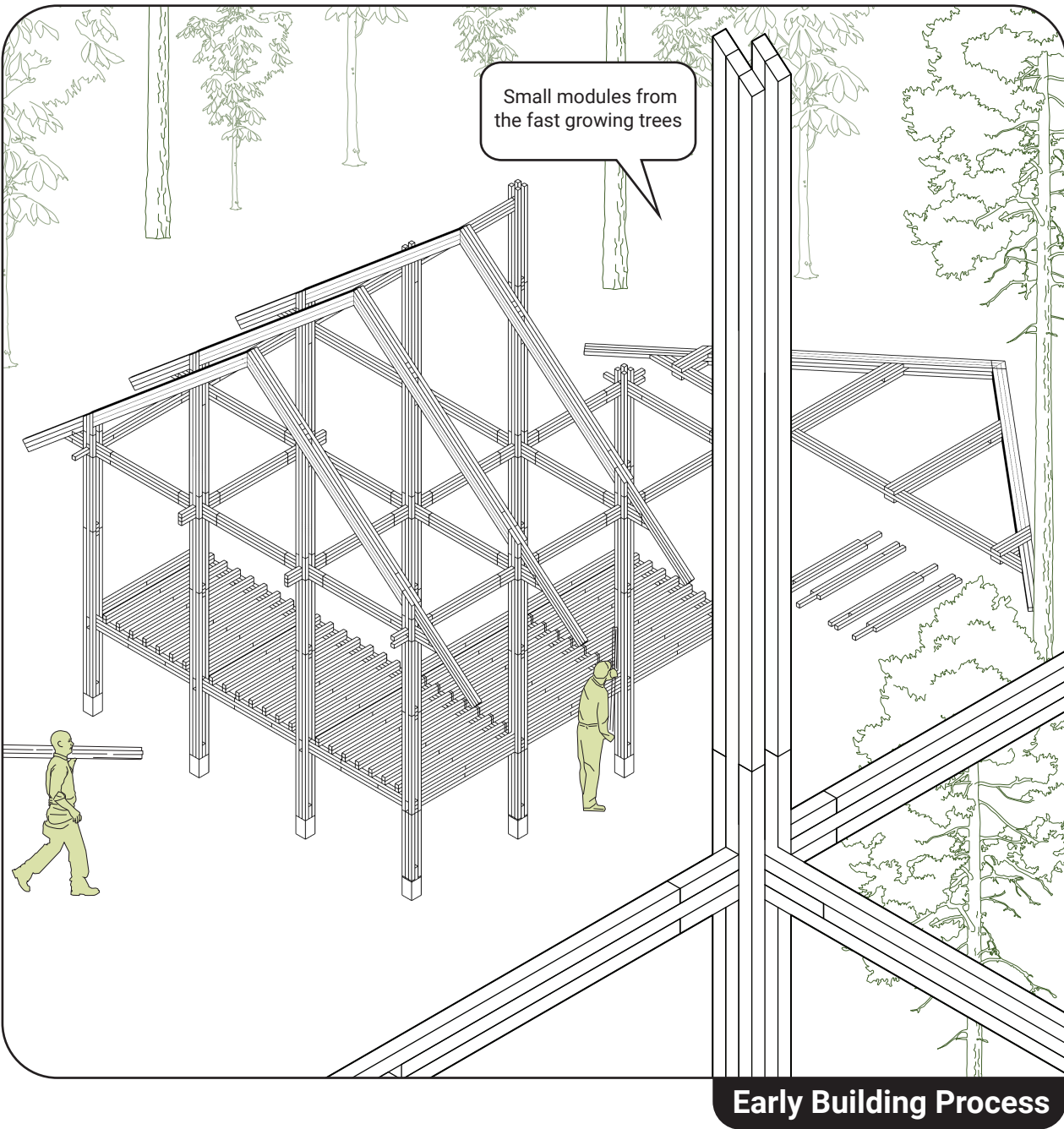
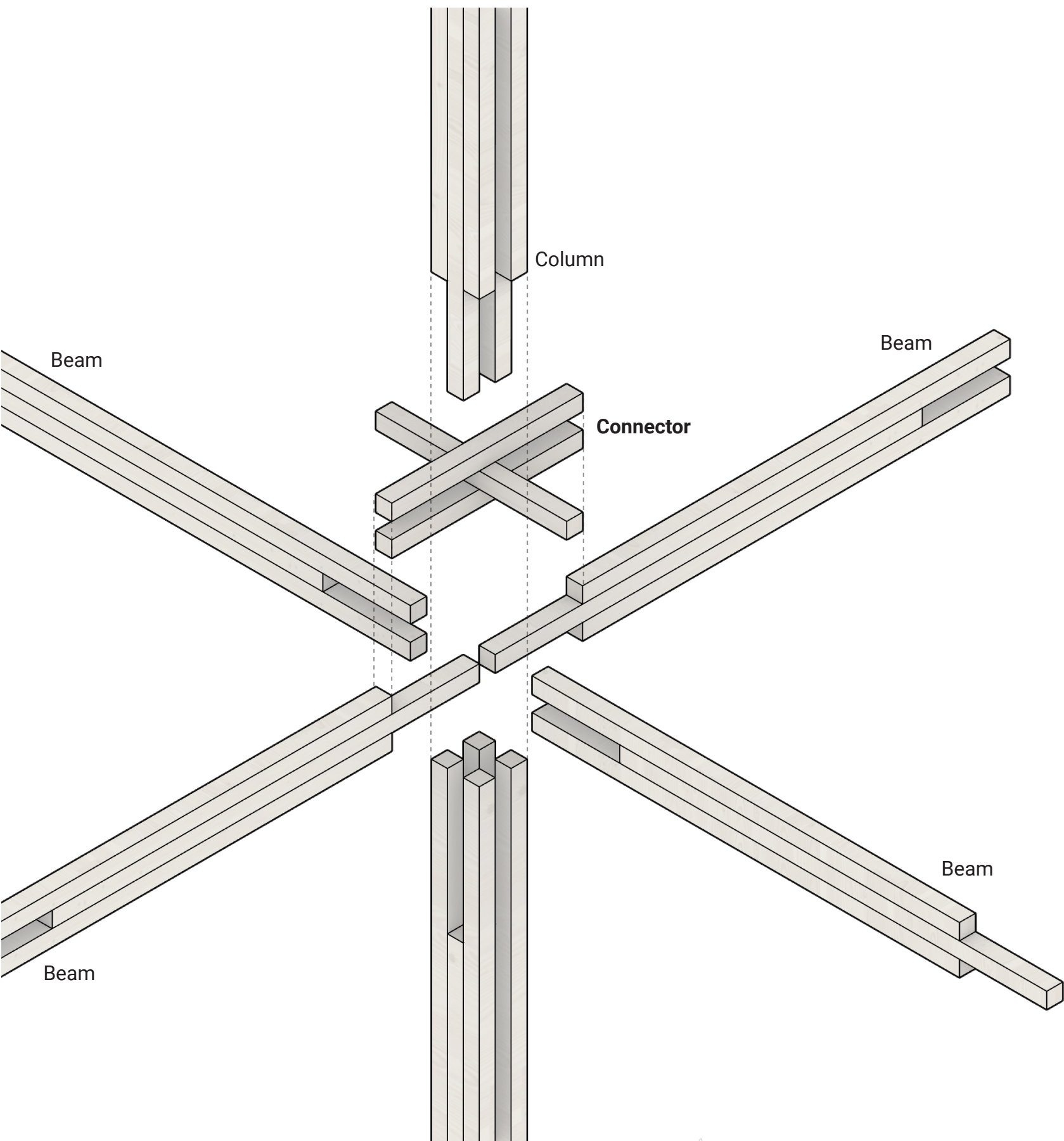
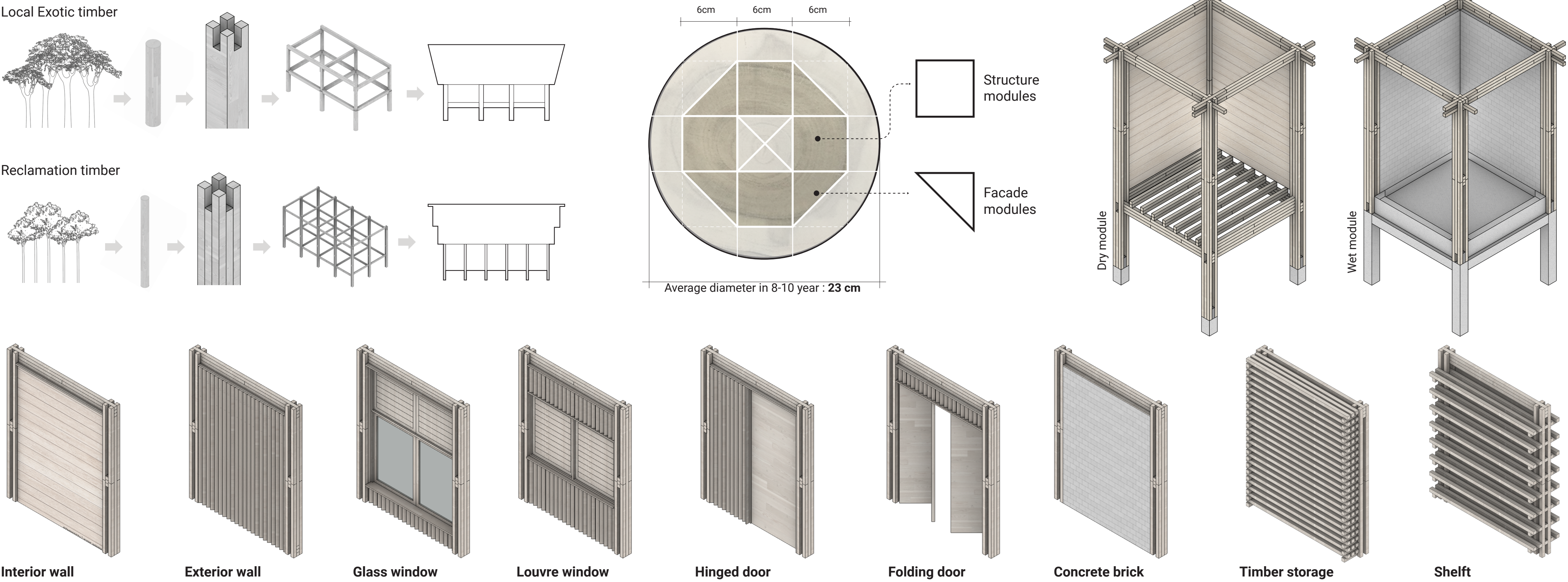


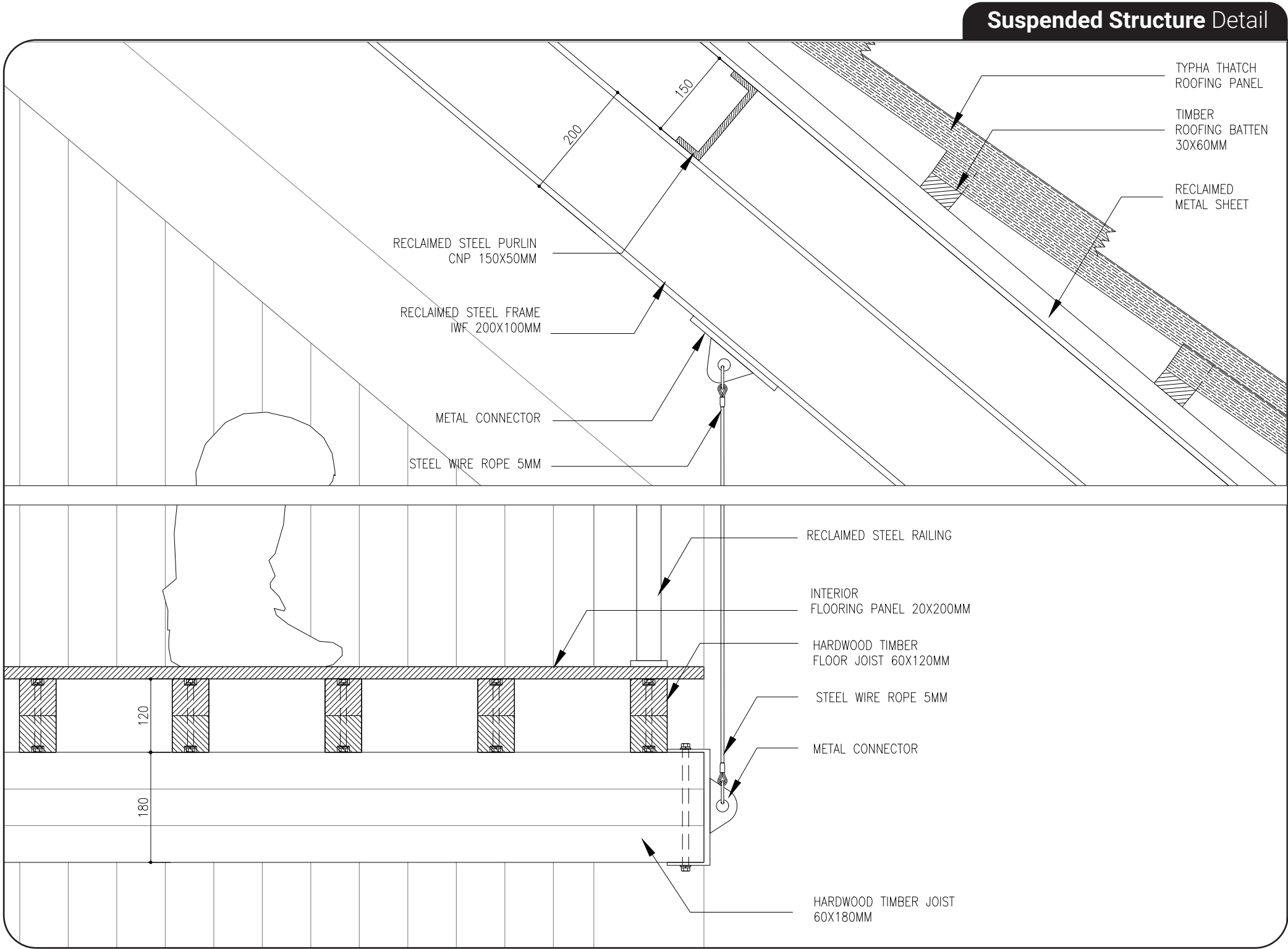
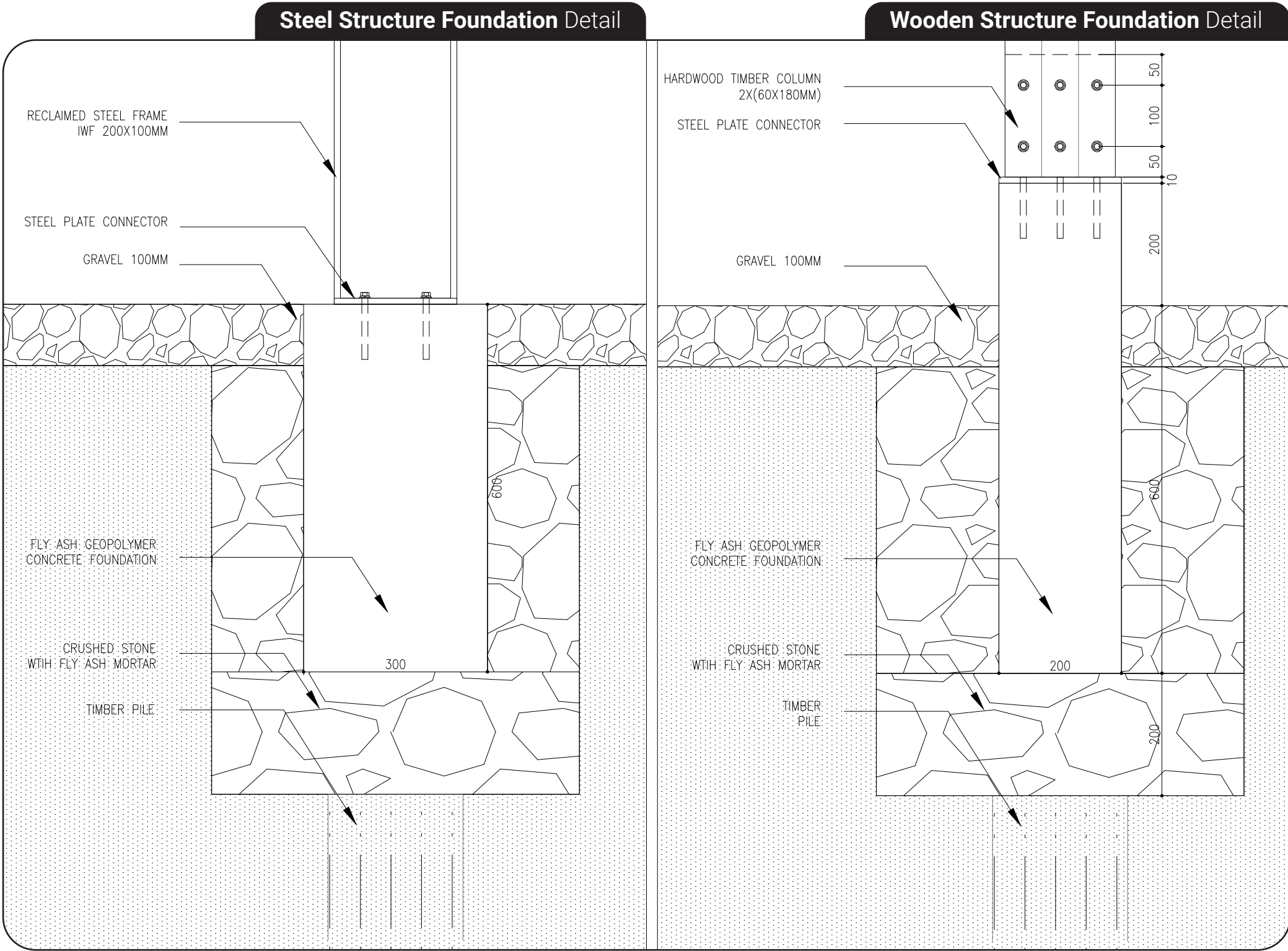
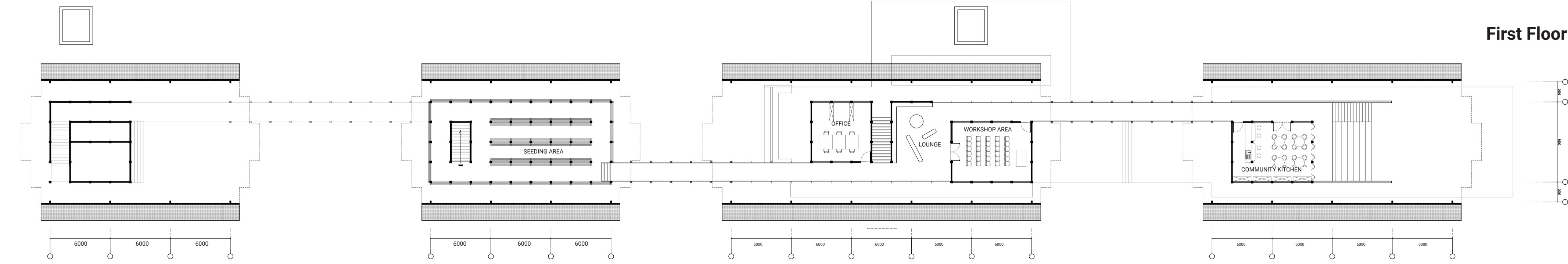
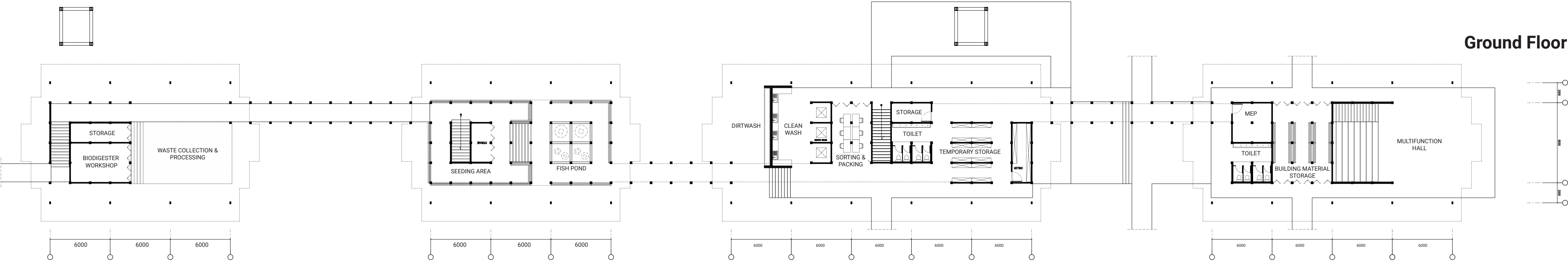
Aerial view

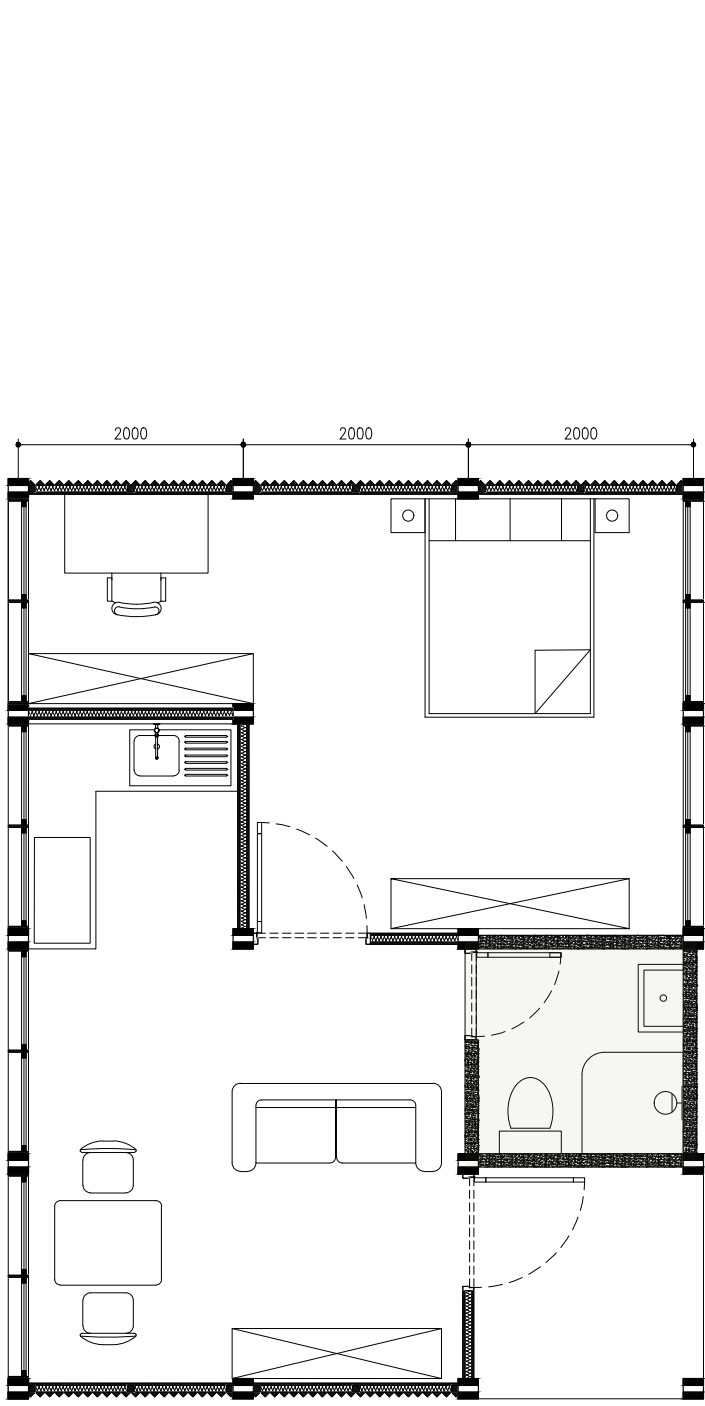
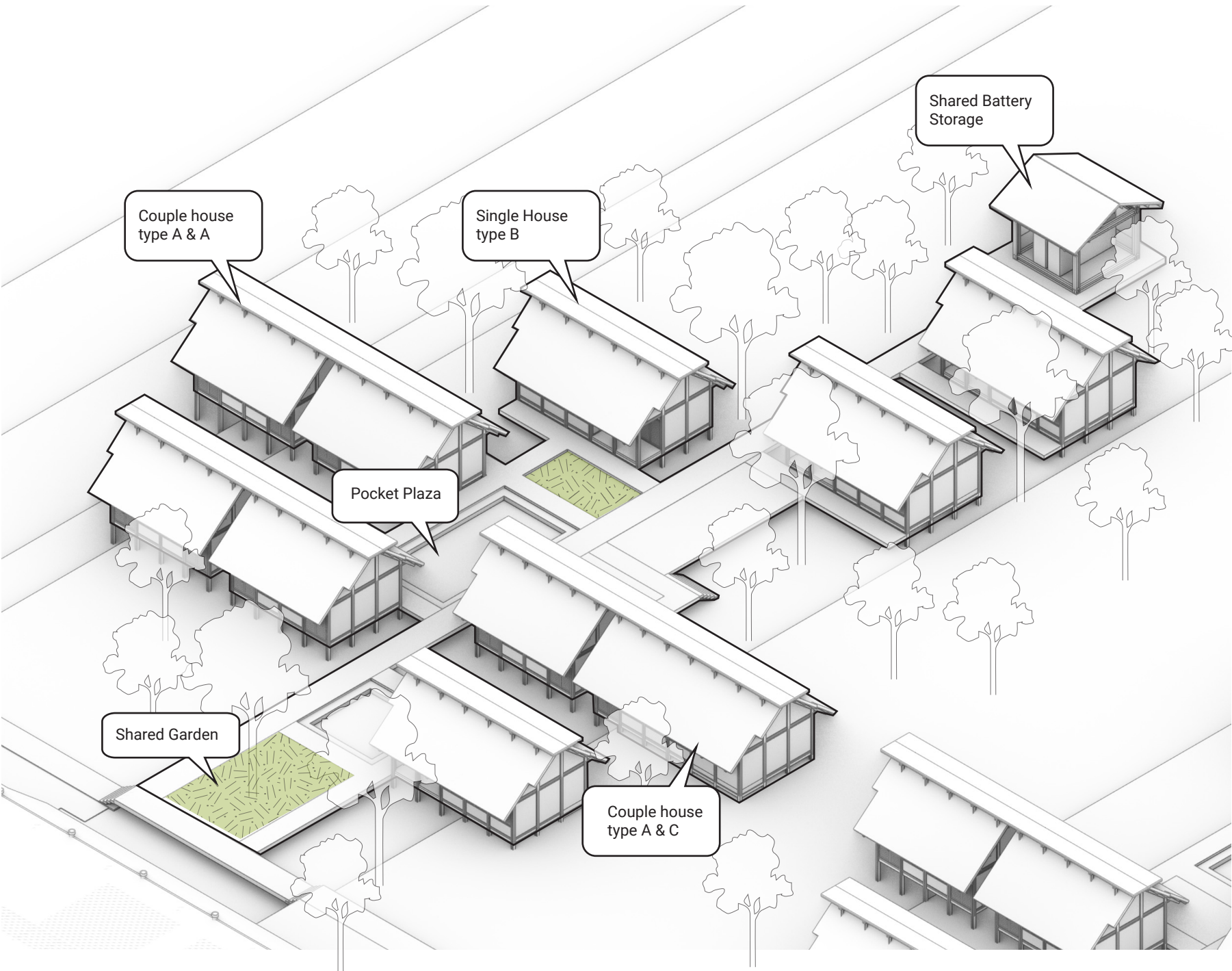


- SITEPLAN**
- 1. Small scale Biomass Powerplant
 - 2. Sawmill & Transfer station
 - 3. Parking area & Entrance walkway
 - 4. Food market & Cafe
 - 5. Logistic trasport
 - 6. Community Space & Material workshop
 - 7. Farm Harvesting Facility
 - 8. Seeding house for Fish & Plants
 - 9. Waste Management & Biodigester
 - 10. Settling Pond
 - 11. Constructed Wetland Pond
 - 12. Caged Fish Farm
 - 13. Housing area
 - 14. Shared Energy Storage

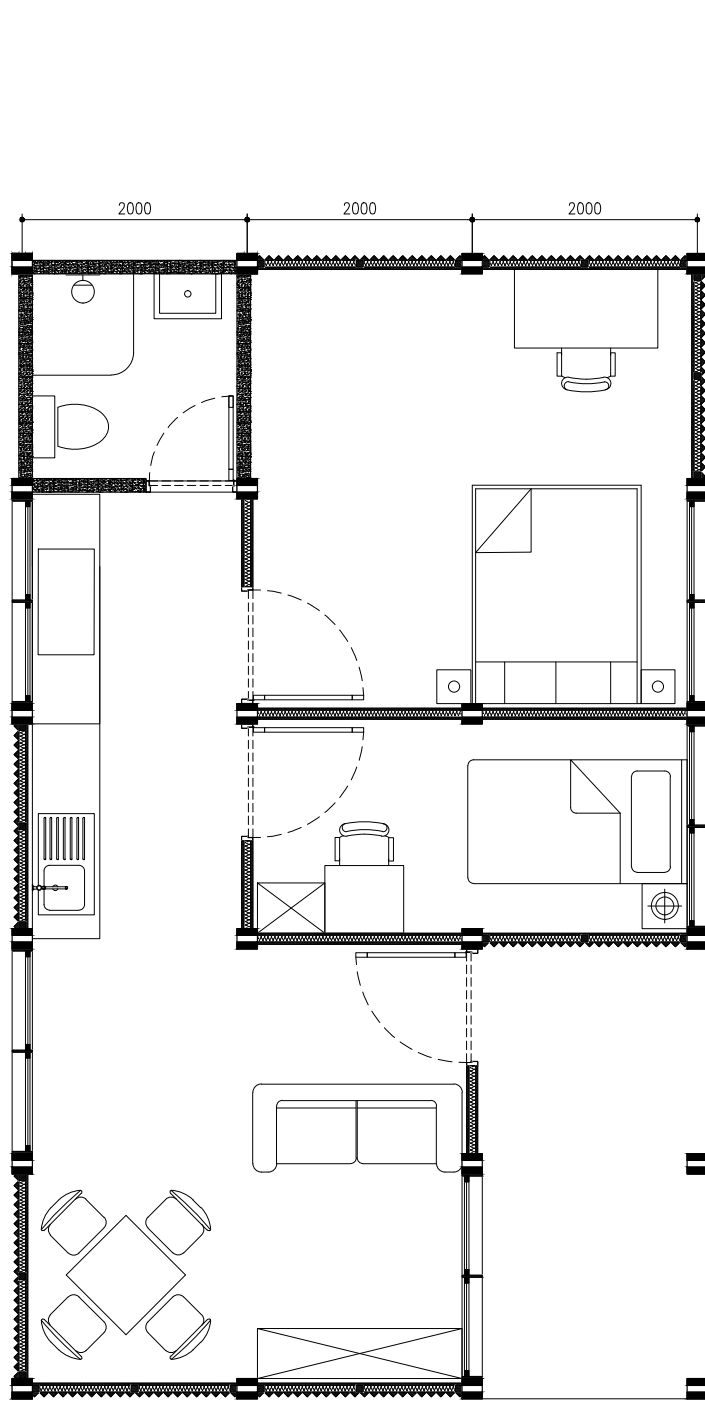




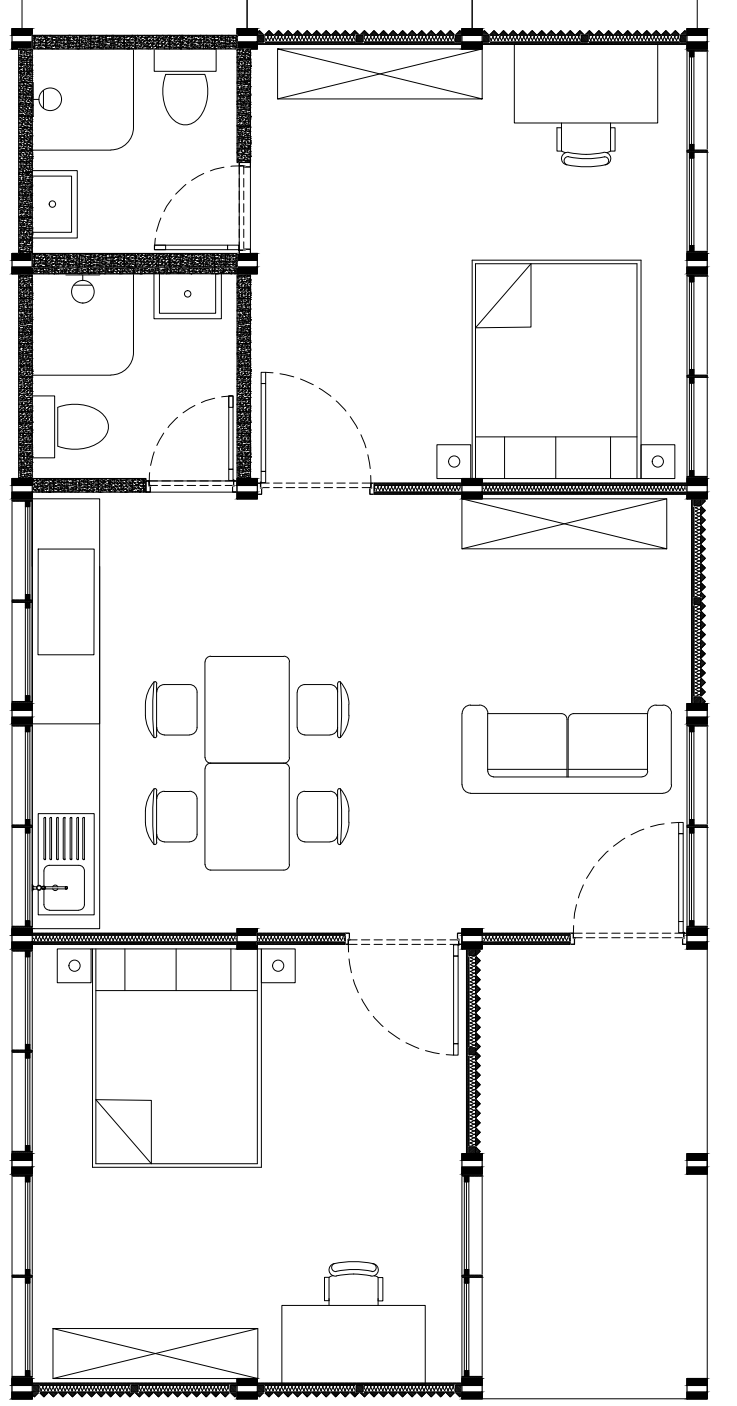




HOUSE TYPE A | 48 m²
1 MASTER BEDROOM
1 BATHROOM



HOUSE TYPE B | 60 m²
1 MASTER BEDROOM
1 BEDROOM
1 BATHROOM



HOUSE TYPE C | 72 m²
2 MASTER BEDROOM
2 BATHROOM

