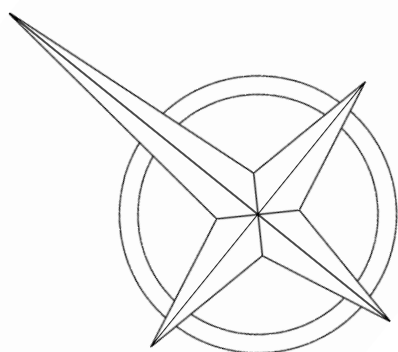
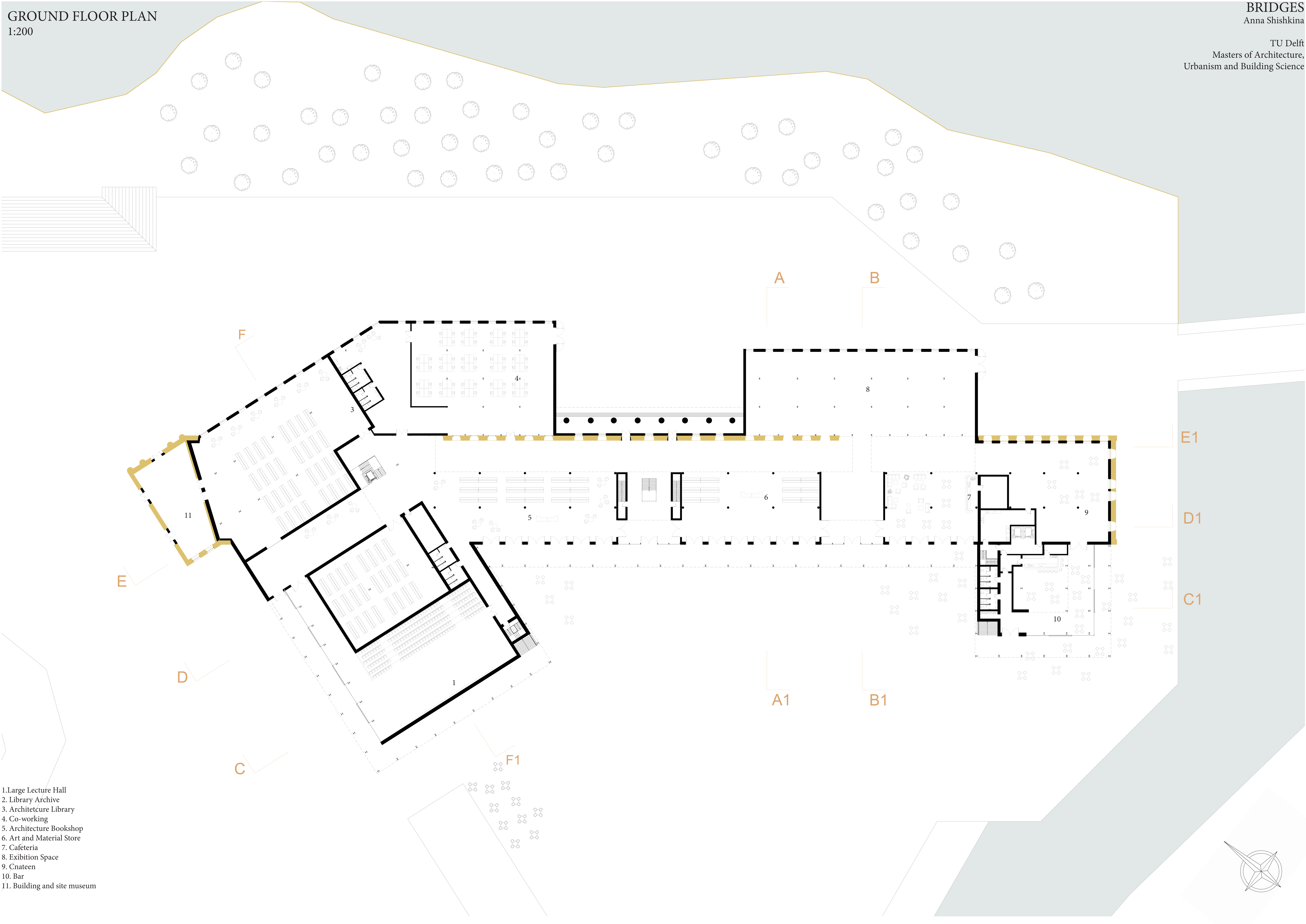


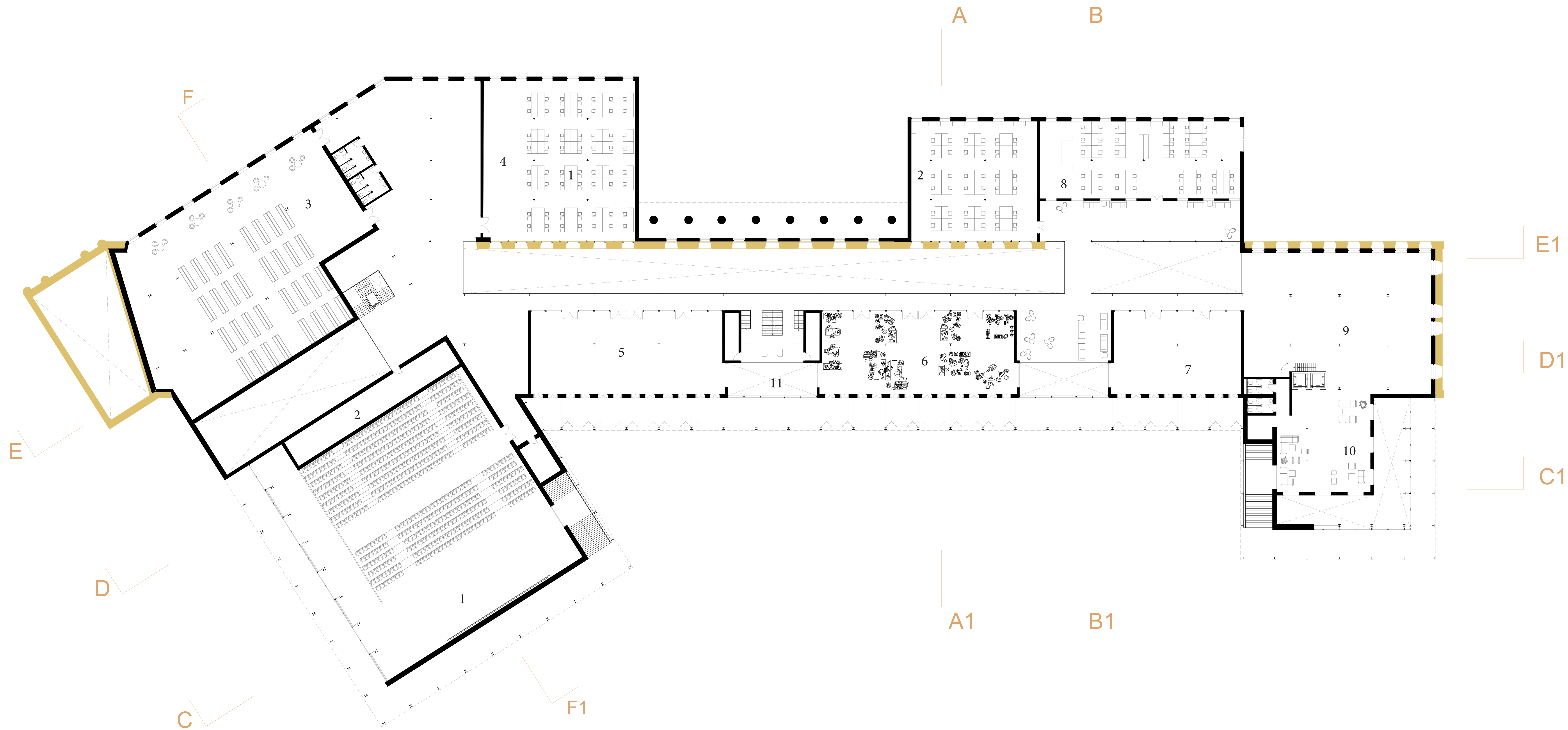
- 1. Water collection tanks
- 2. Water reuse systems
- 3. Storage spaces - university
- 4. Storage spaces - stores
- 5. HVAC controlle
- 6. Storage spaces - staff and studens
- 7. Cleanres storage
- 8. Canteen storage and fridges
- 9. Bar storage and fridges
- 10. Beer fridge





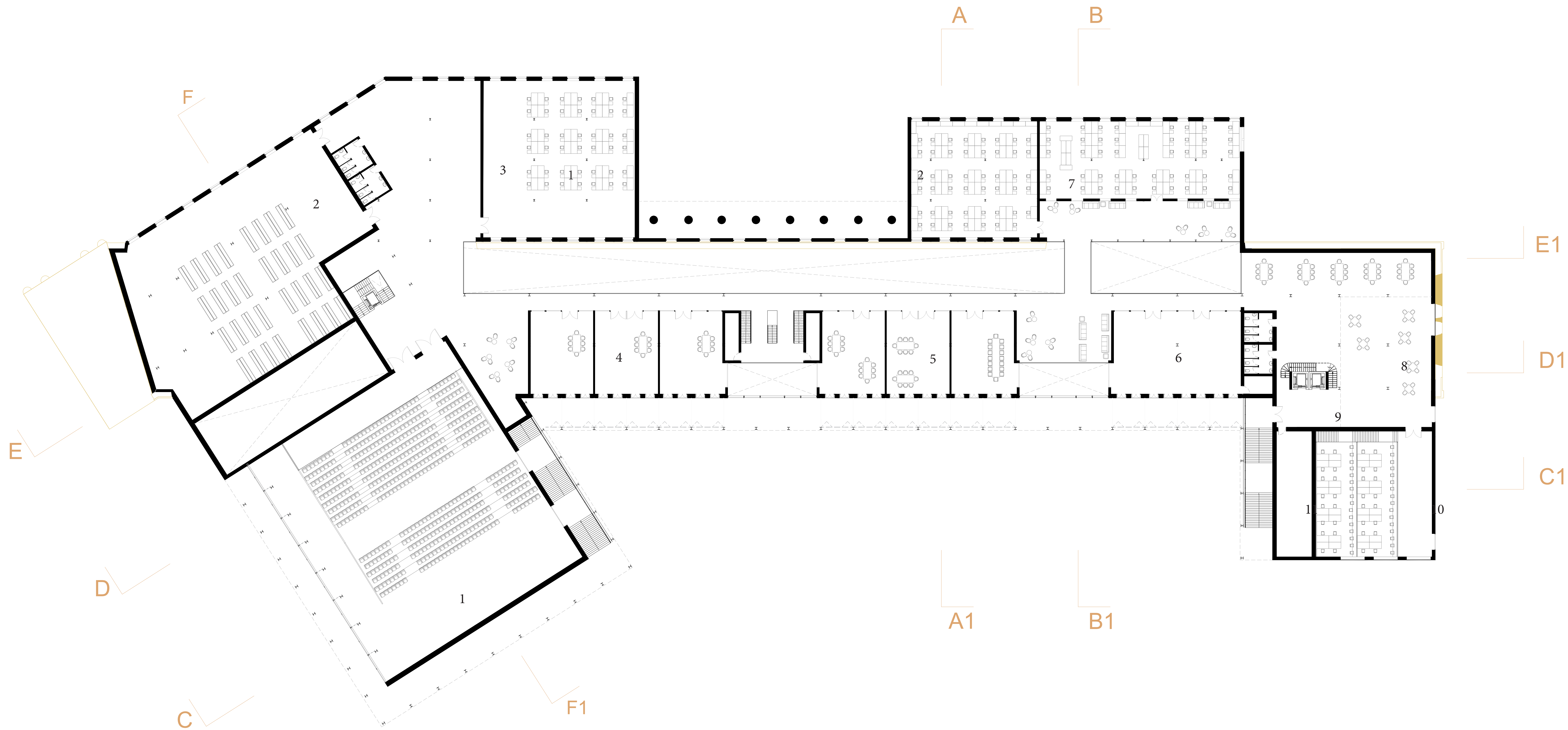




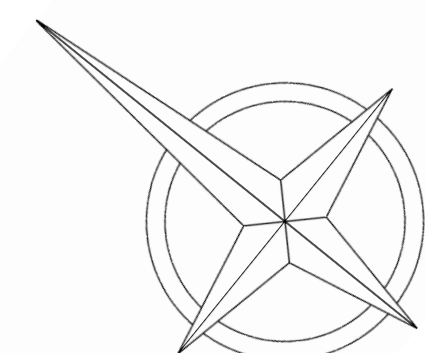


- 1. Large Lecture Hall
- 2. Technical Spaces Lecture hall
- 3. Architeture Library
- 4. Studio Spaces- 1st years
- 5. ACT Lab
- 6. Model Making Facilities
- 7. Print Shop
- 8. Studio Spaces - 2nd and 3d years
- 9. Presentation and tutorial spaces
- 10. Student Living room
- 11. University Reception

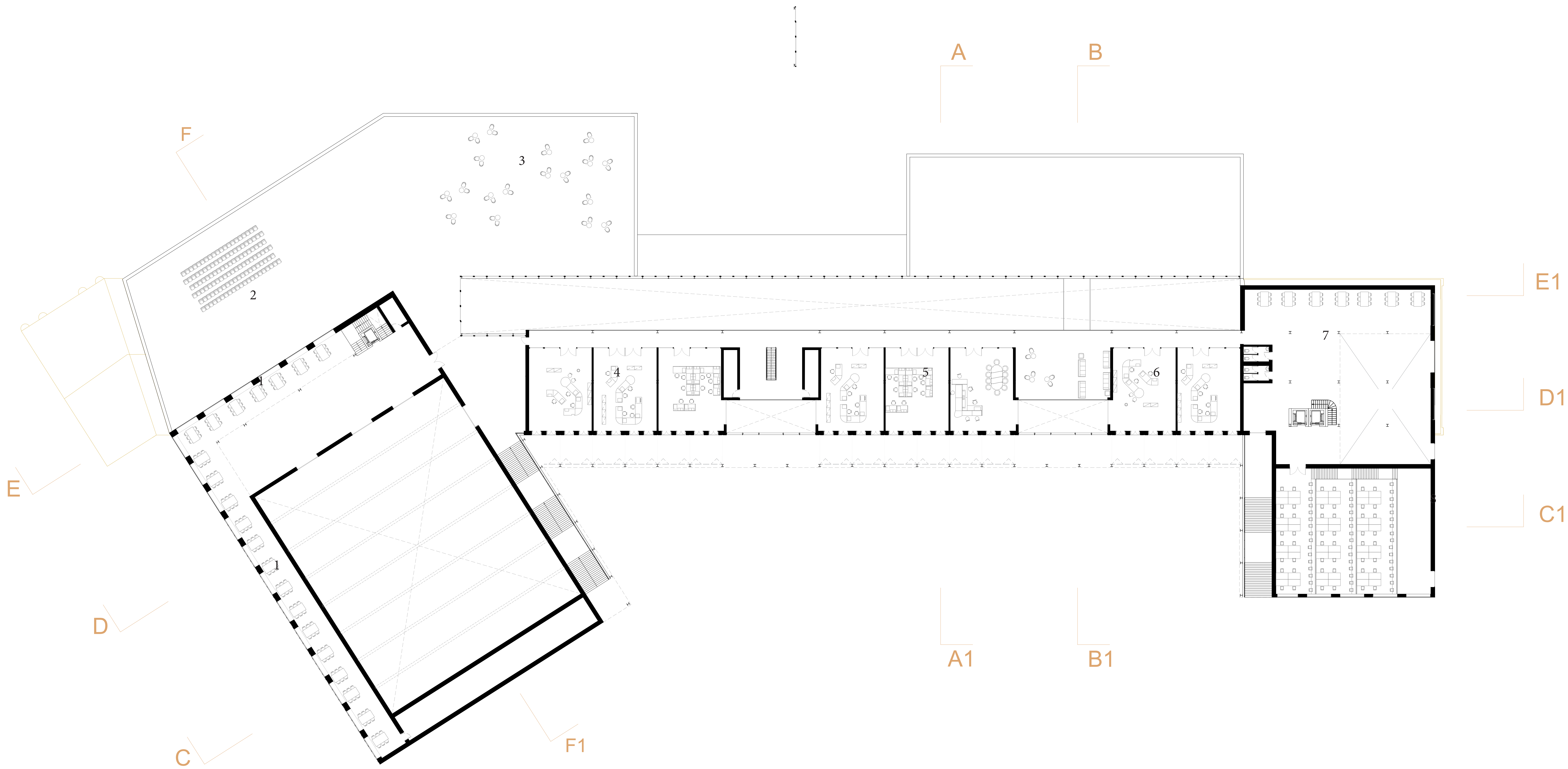




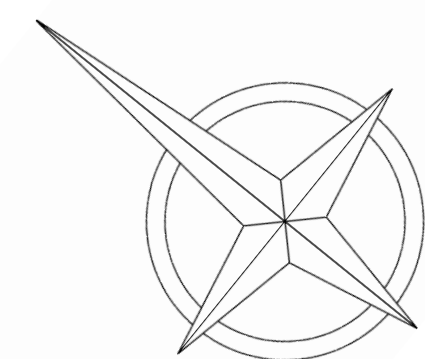
- 1. Large Lecture Hall
- 2. Architeture Library
- 3. Studio Spaces- 4th years
- 4. Small Presentation rooms
- 5. Workshop/Group tutorial spaces
- 6. Small Lecture room
- 7. Studio Spaces - Graduation Students
- 8. Group work spaces
- 9. Student entrance and information boards
- 10. Small Lecture hall
- 11. Technical spaces small Lecture hall



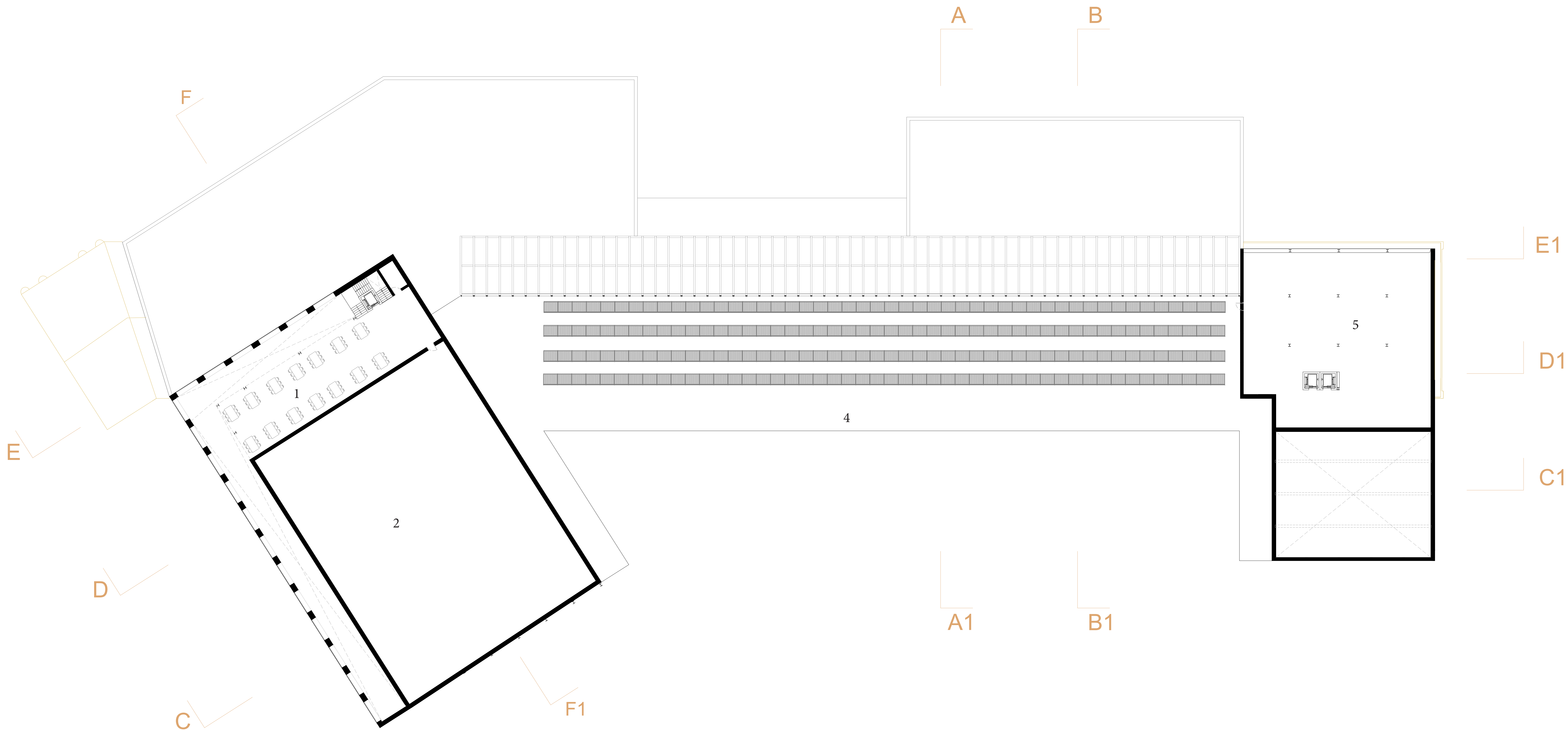




- 1. Quite study spaces
- 2. Open air cinema
- 3. Panoramic roof
- 4. Staff offices
- 5. Dean and Chair offices
- 6. Professor offices
- 7. Student Print Facilities
- 8. Small lecture Hall

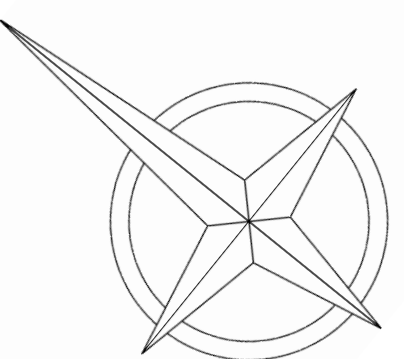
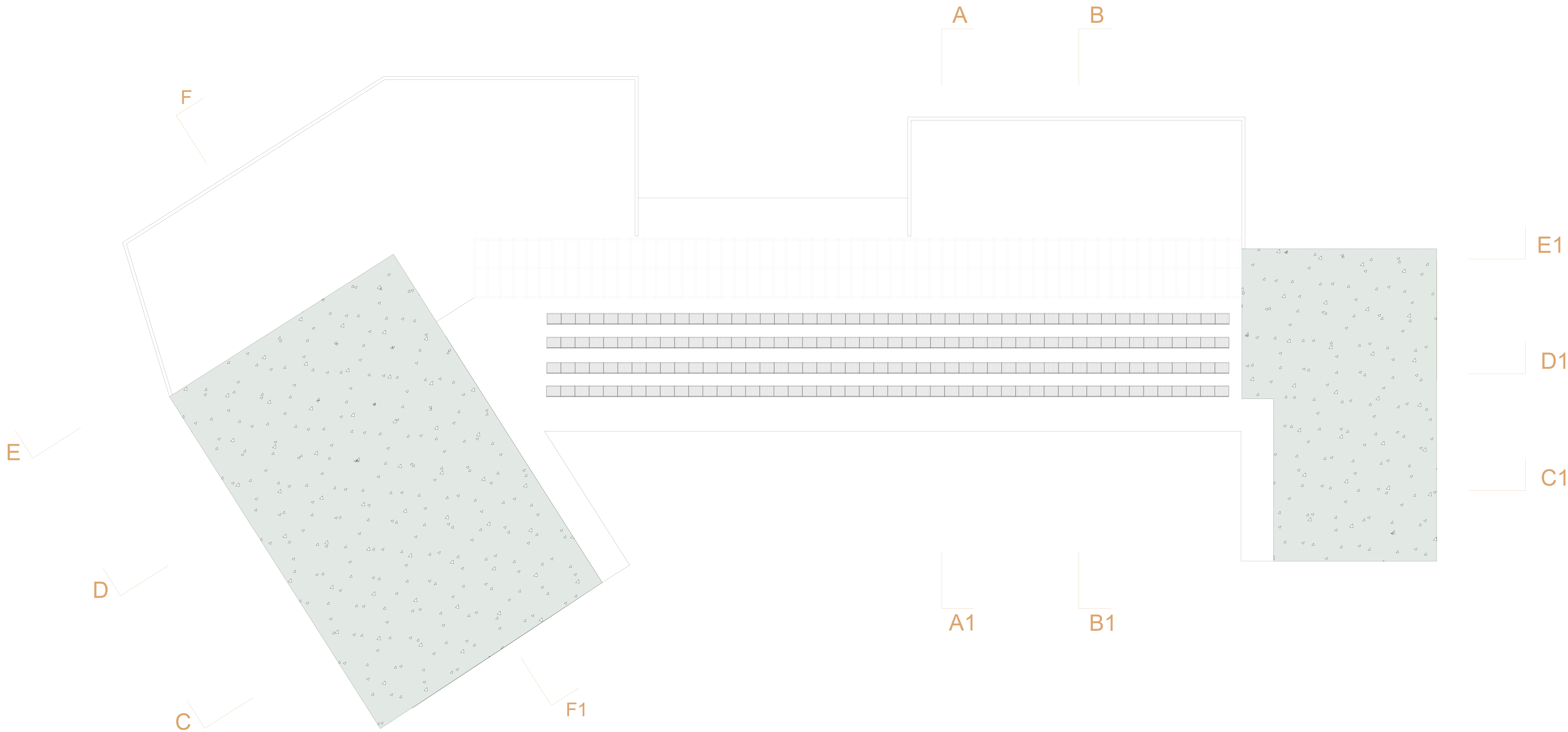






- 1. Quite study spaces
- 2. Technical and ventilation spaces
- 3. Solar pannel roof
- 4. Storage and technical spaces





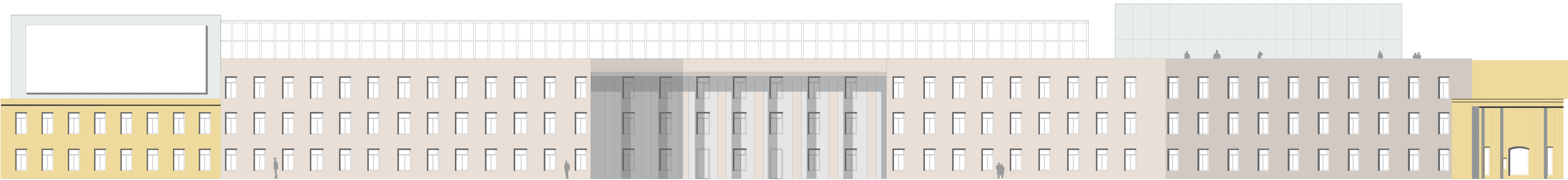




SECTION DD1

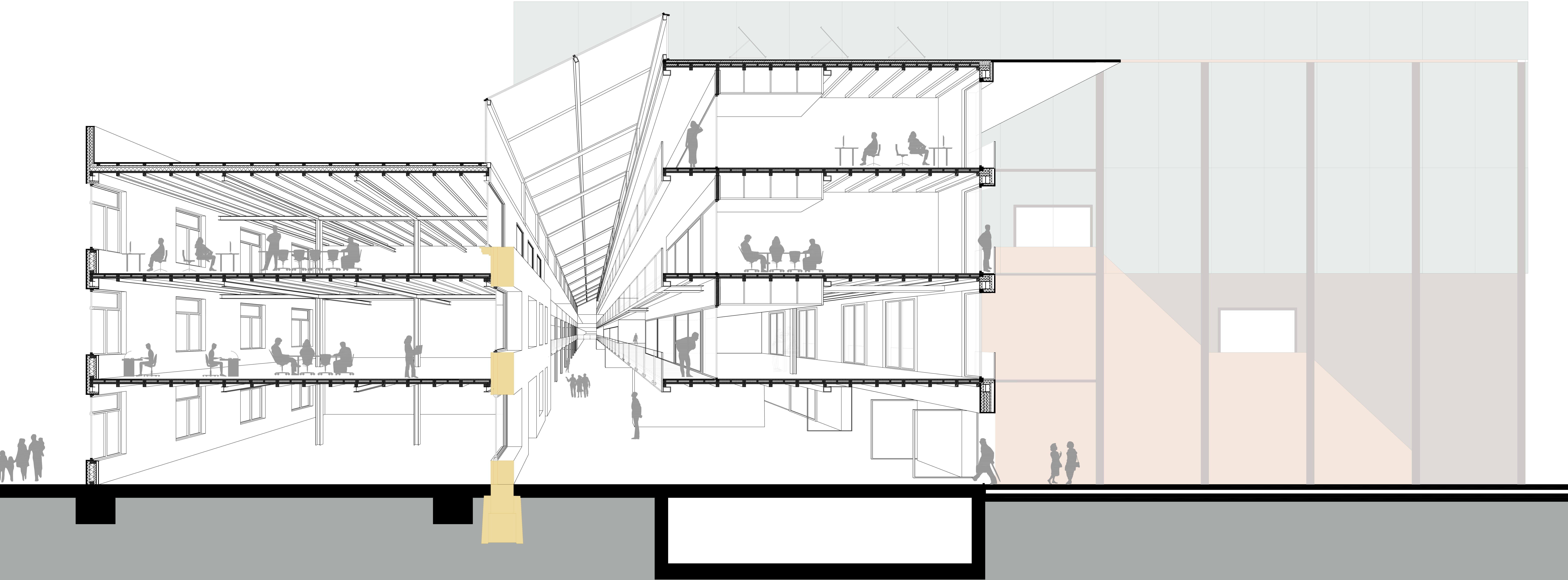


SECTION CC1



WATERFRONT FACADE







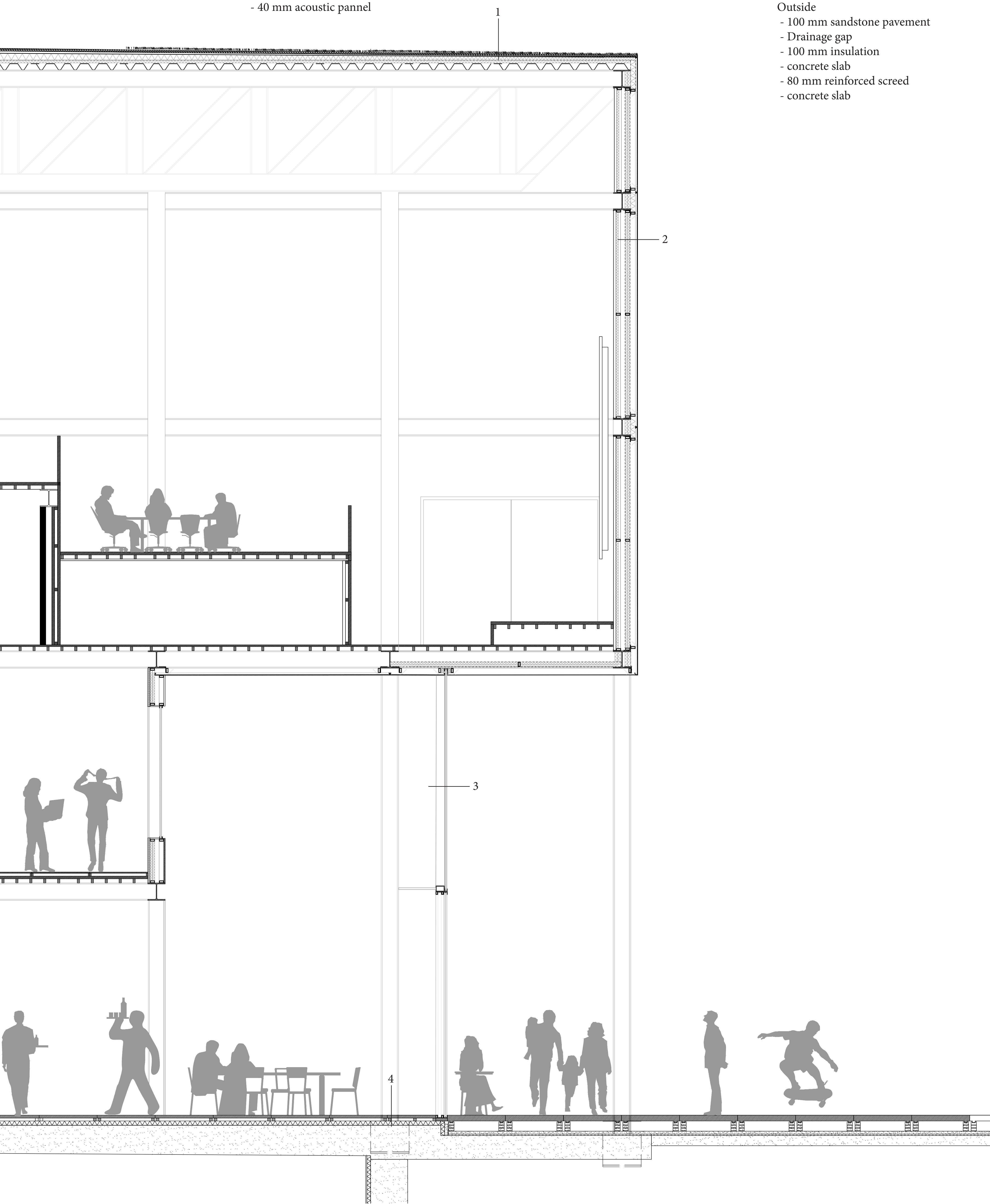
FRAGMENT SECTION  
1:30

1. Roof construction

  - Green roof
  - 100mm drainage mat
  - 100 mm insulation
  - Vapour barrier
  - 90 mm trapexoid sheet
2. Facade construction

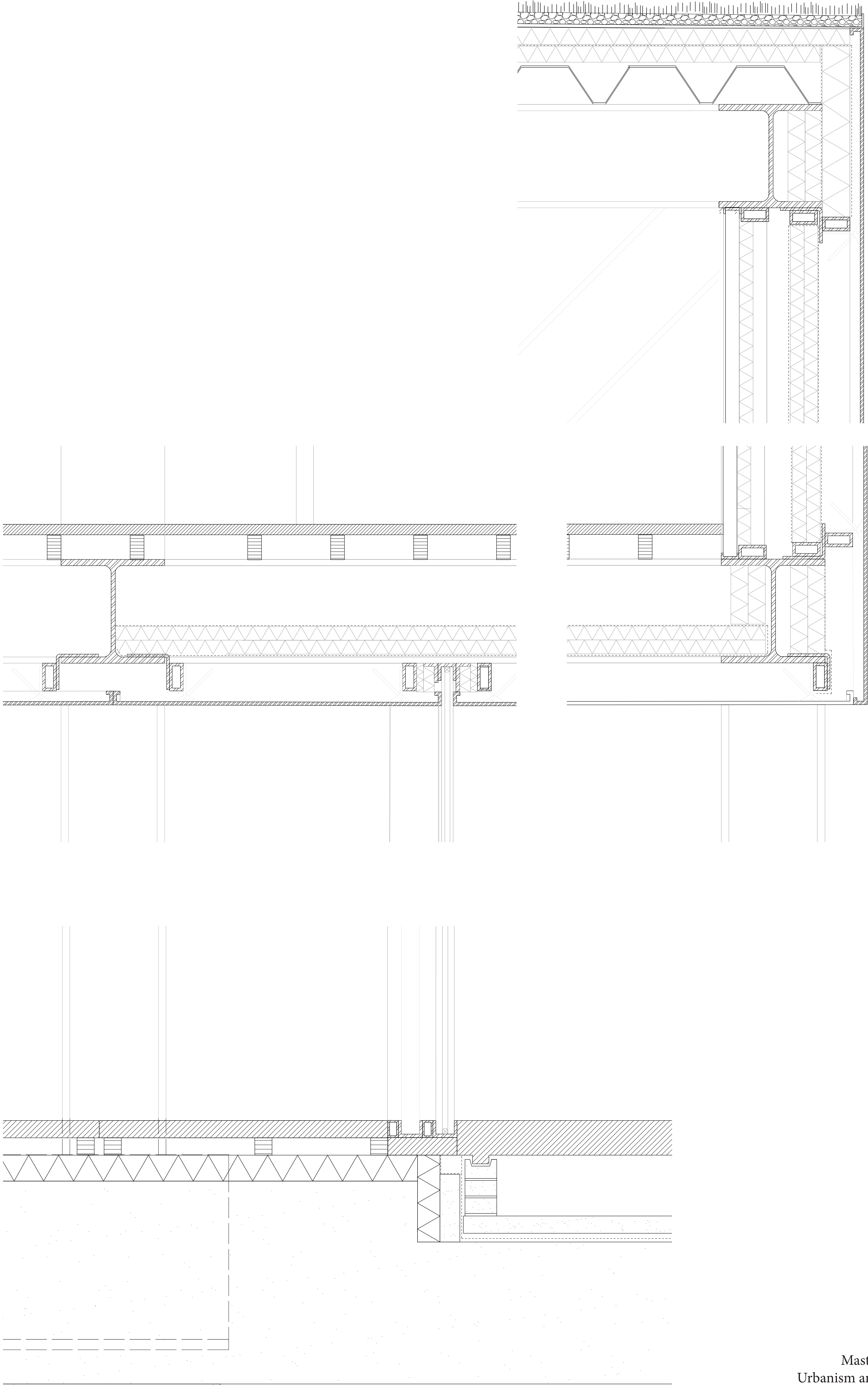
  - 10 mm copper pannel
  - 8 mm ventilation
  - 80/40/5 steel rube frame
  - 40 mm mineral wool
  - insulation void
  - 70 mm steel channels frame
  - 20 mm insulation pannel
  - 40 mm acoustic pannel
3. Glass facade

  - Triple glazing
  - 70 mm steel channels frame



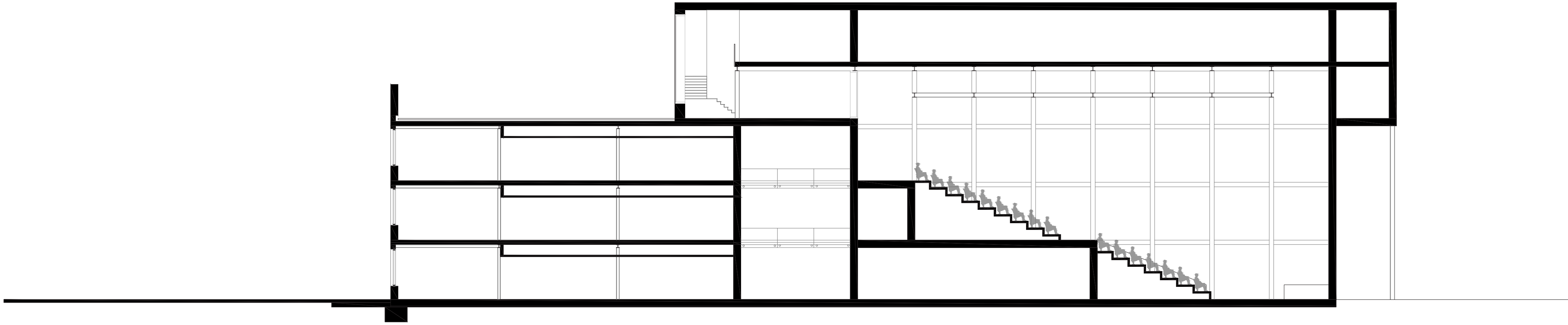
DETAILS 1:5

4. Floor construction
- Inside
- 50 mm sandstone flooring
  - 45 mm timber slabs
  - 100 mm insulation
  - concrete slab
- Outside
- 100 mm sandstone pavement
  - Drainage gap
  - 100 mm insulation
  - concrete slab
  - 80 mm reinforced screed
  - concrete slab

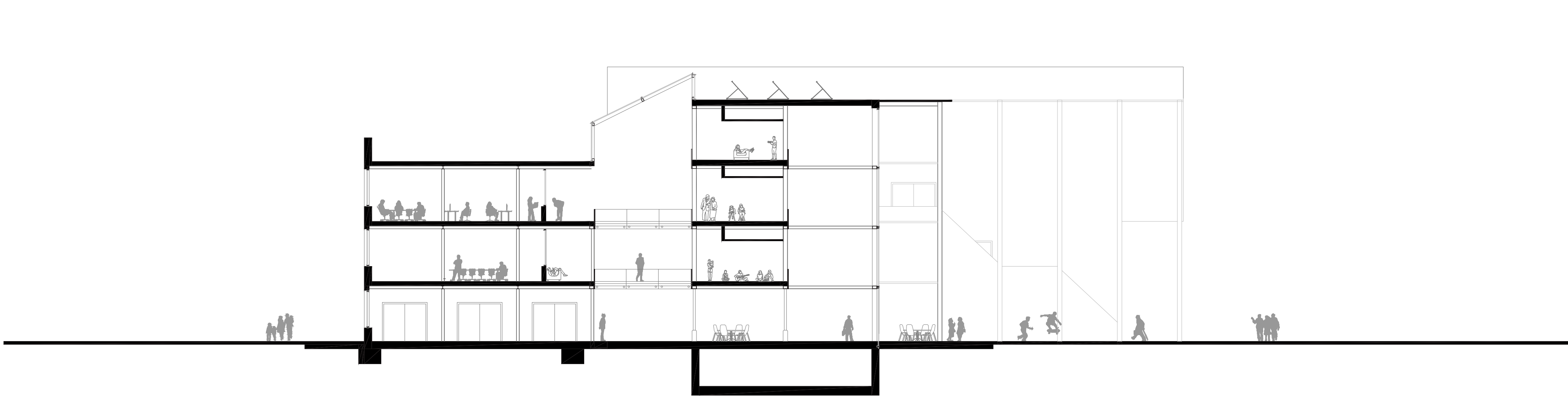




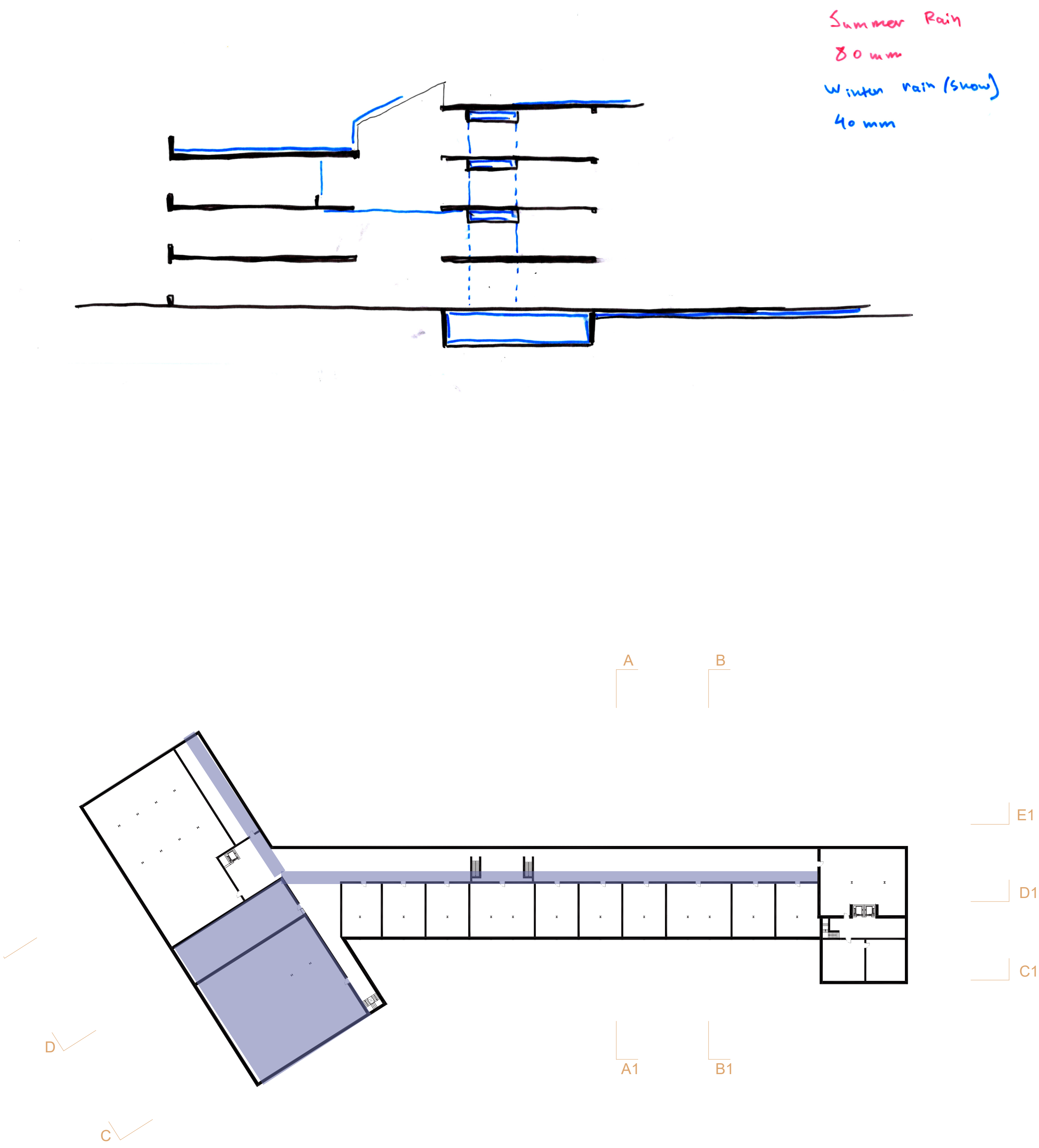
Section FF1  
1:200



Section BB1  
1:200

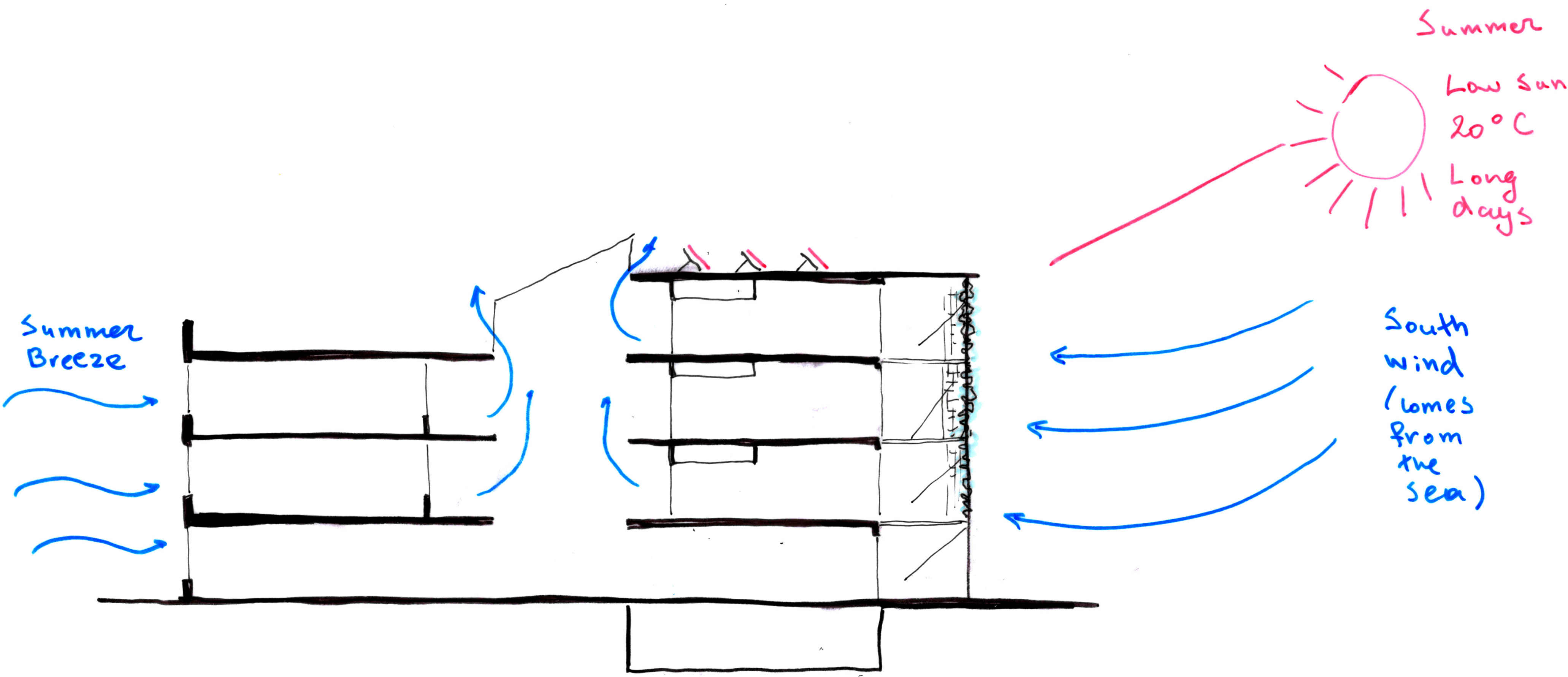


Water collection



CLIMATE STRATEGY

Summer



Winter

