

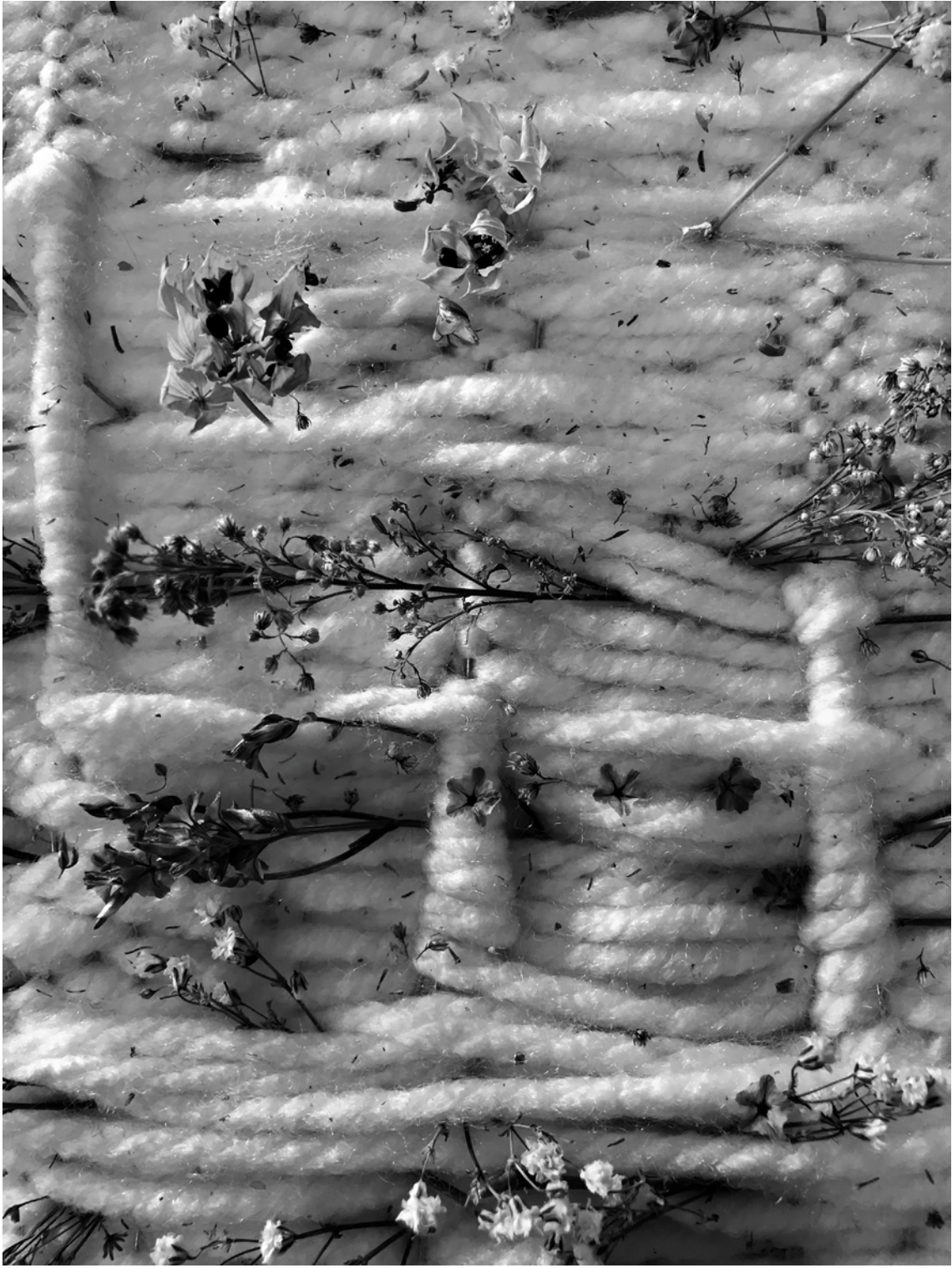
# BETWEEN CITY AND PORT // a water complex in Genova

Graduation project by Kim Wandel

*Faculty of Architecture and the Built Environment*

*Alper Alkan, Niklaas Deboutte, Gilbert Koskamp*

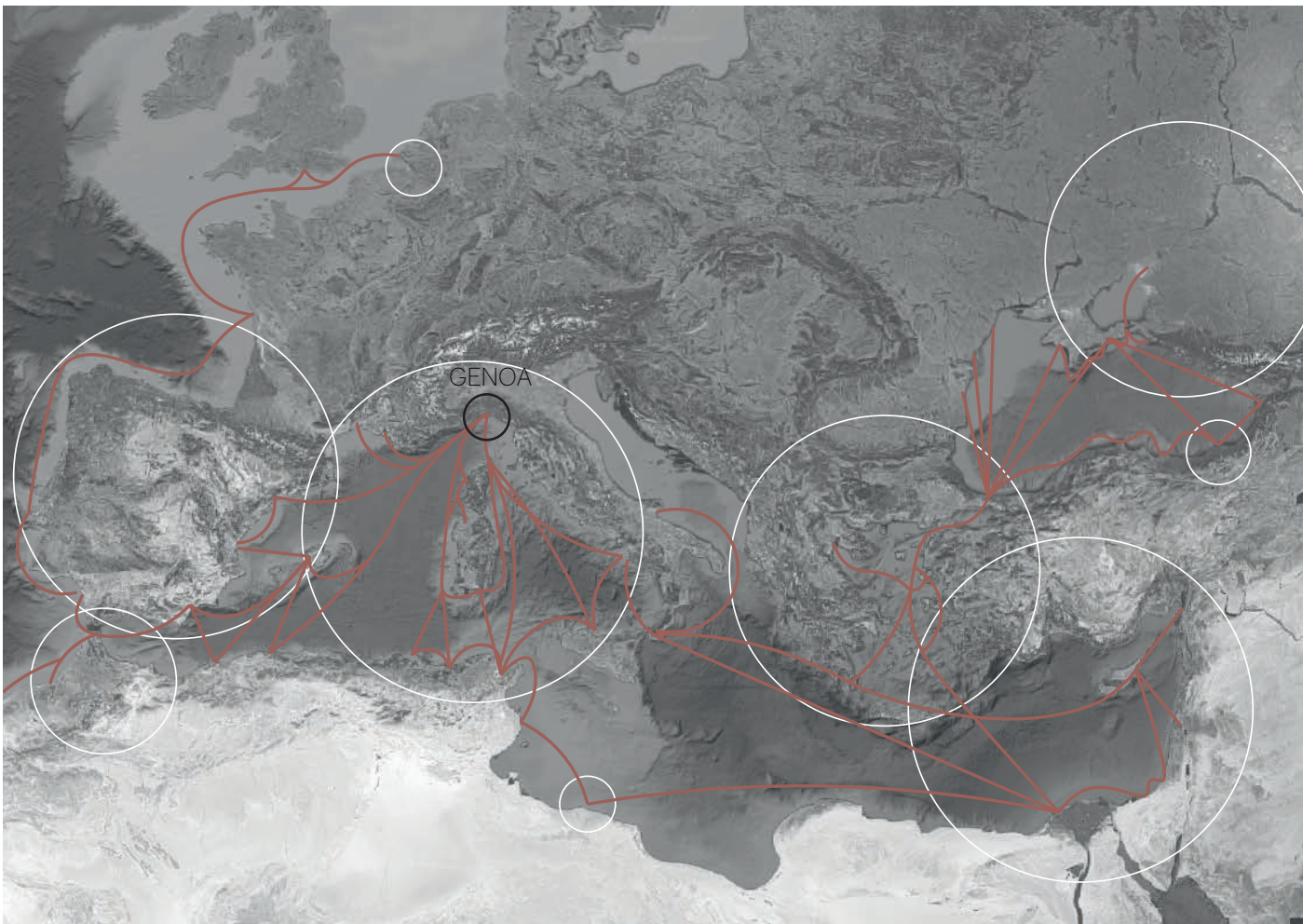




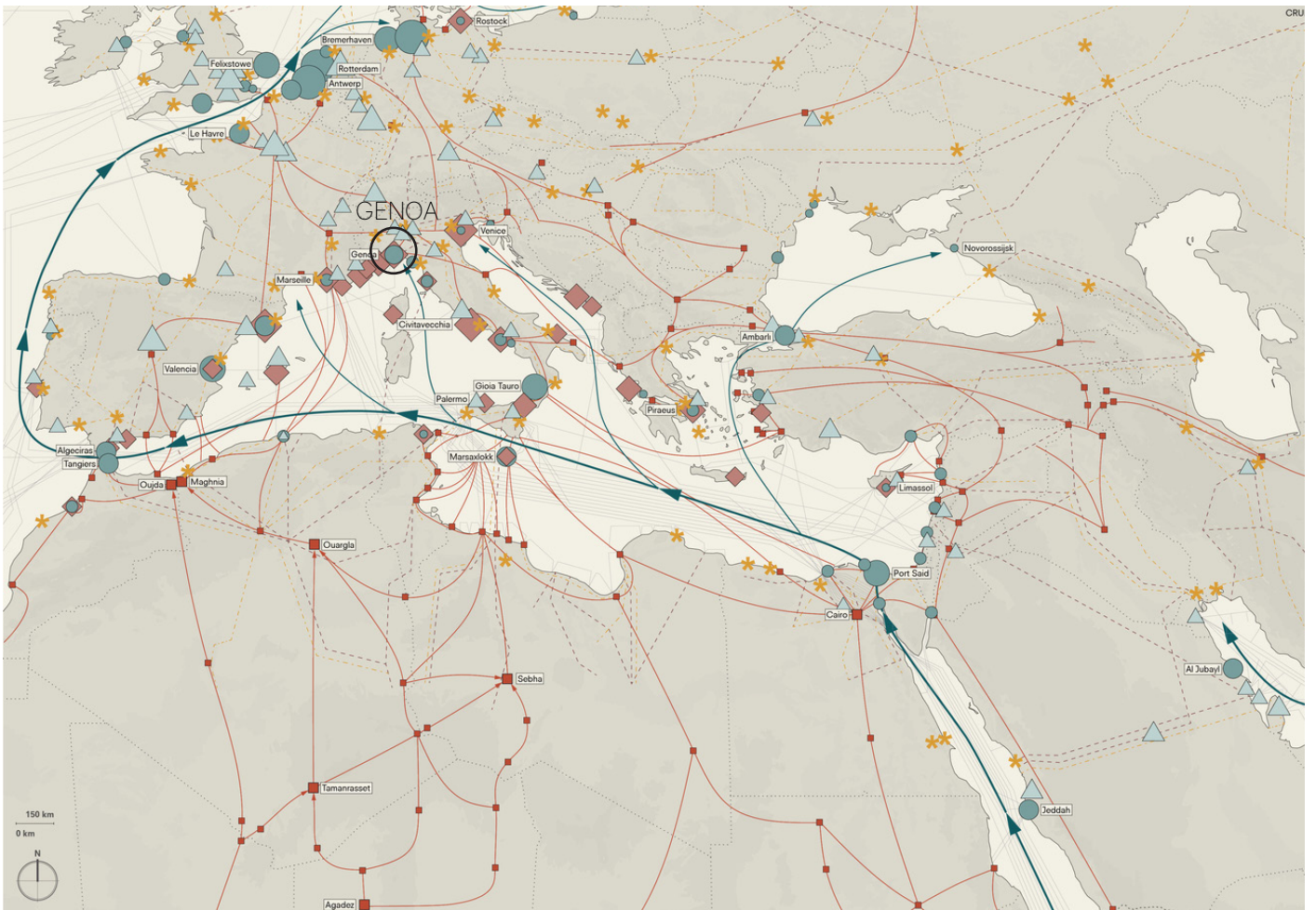




# Historic expansion of Genoa

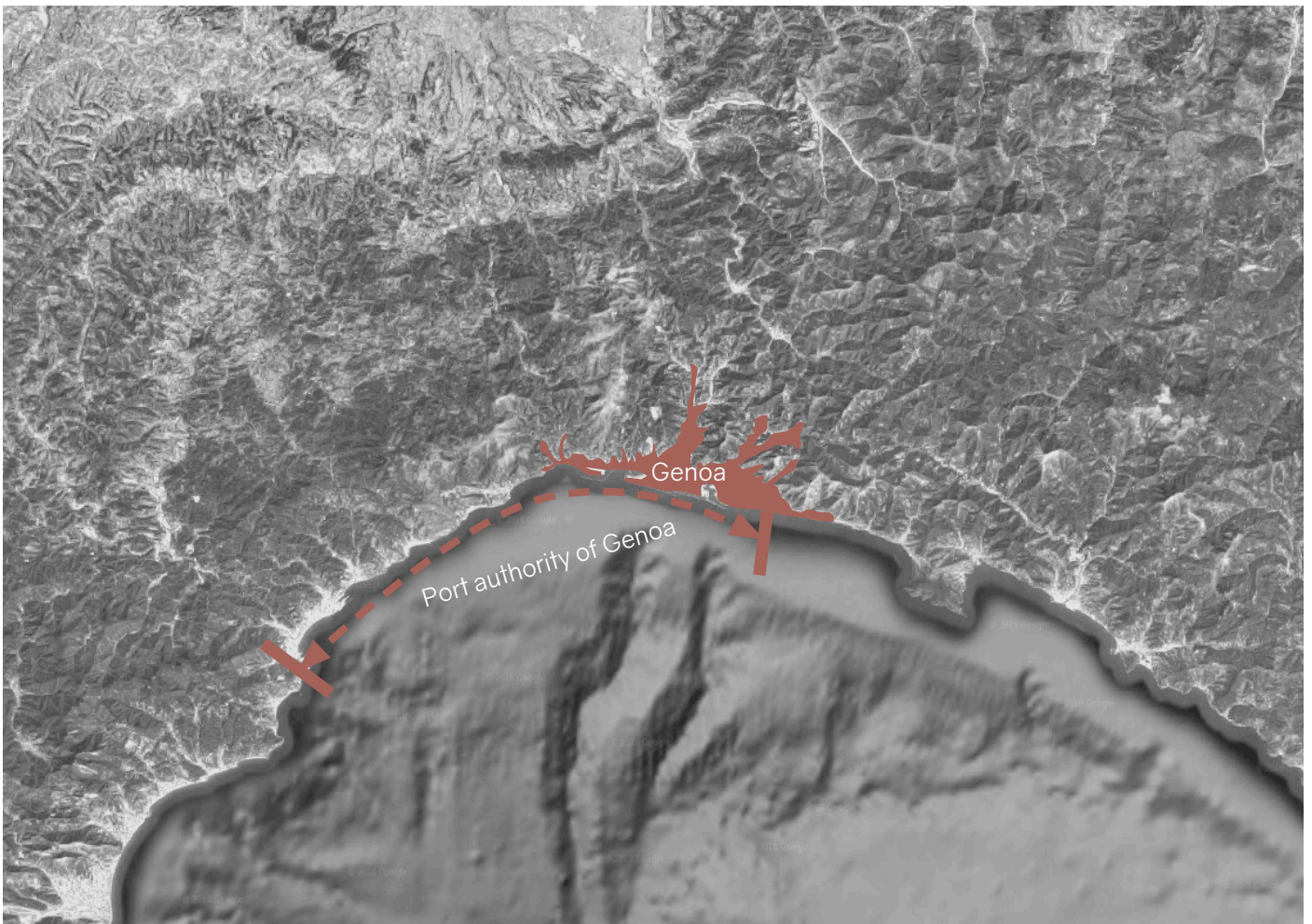


# European Network



source: Palermo Atlas  
OMA

Port vs city

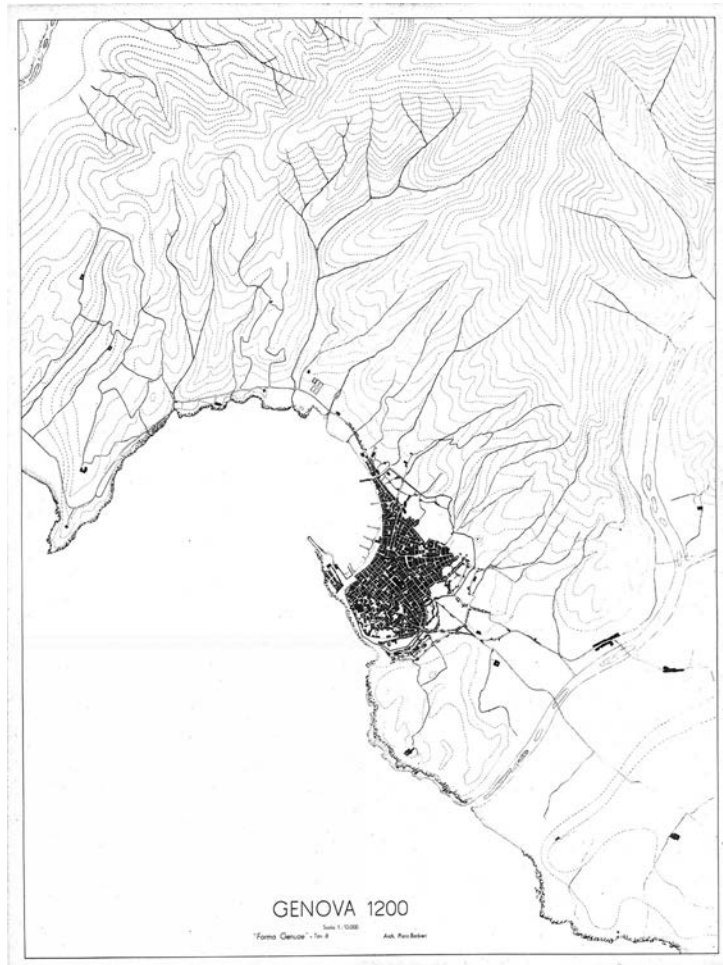


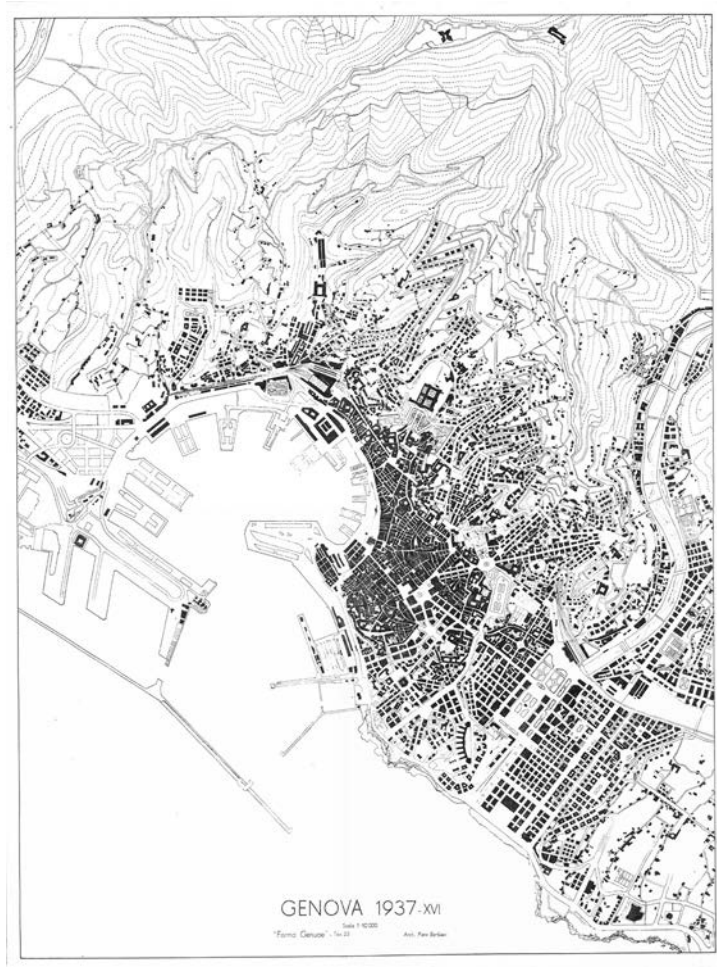


The city of Genoa

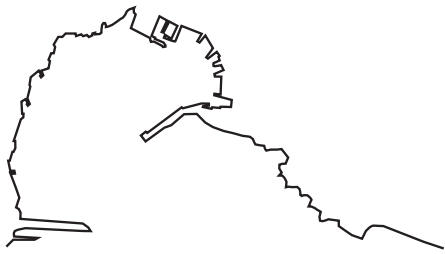


# Urban development

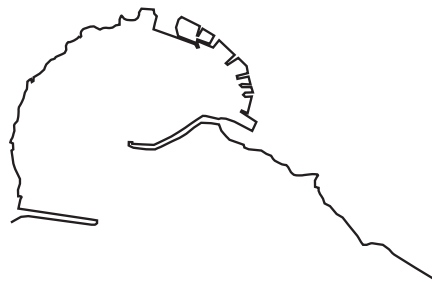




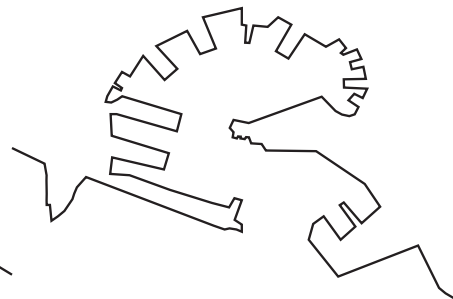
A clear gesture



1656



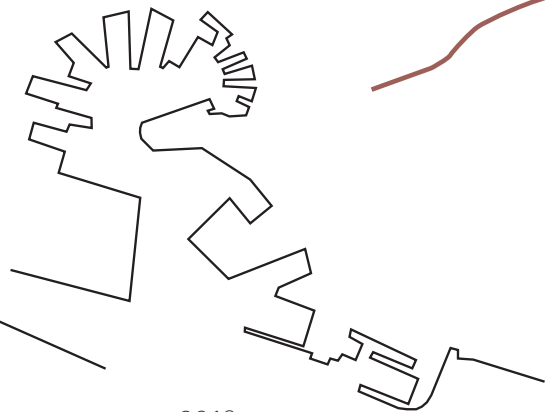
1755



1916



1943

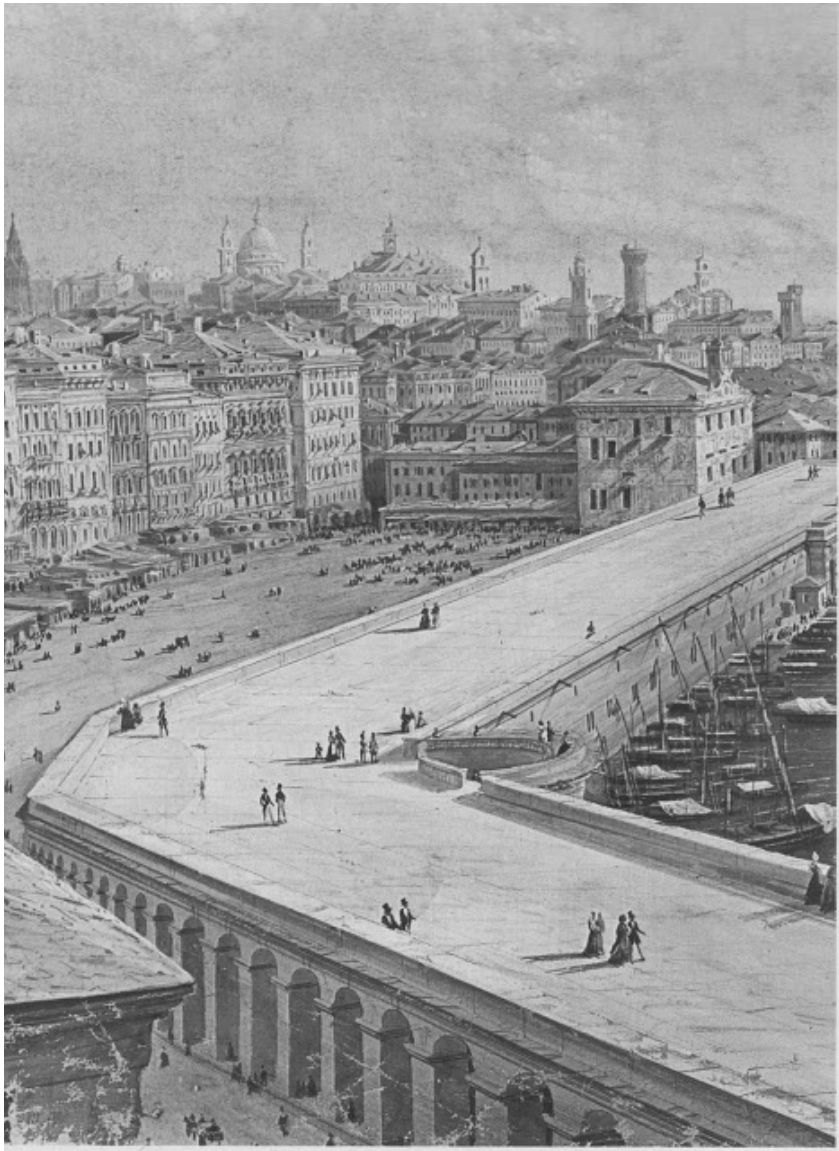


2018



sopraelevata

Terrazzo di Marmo





Ponte Reale





Train to the International Exposition of 1914



Draining



# Building the Sopraelevata

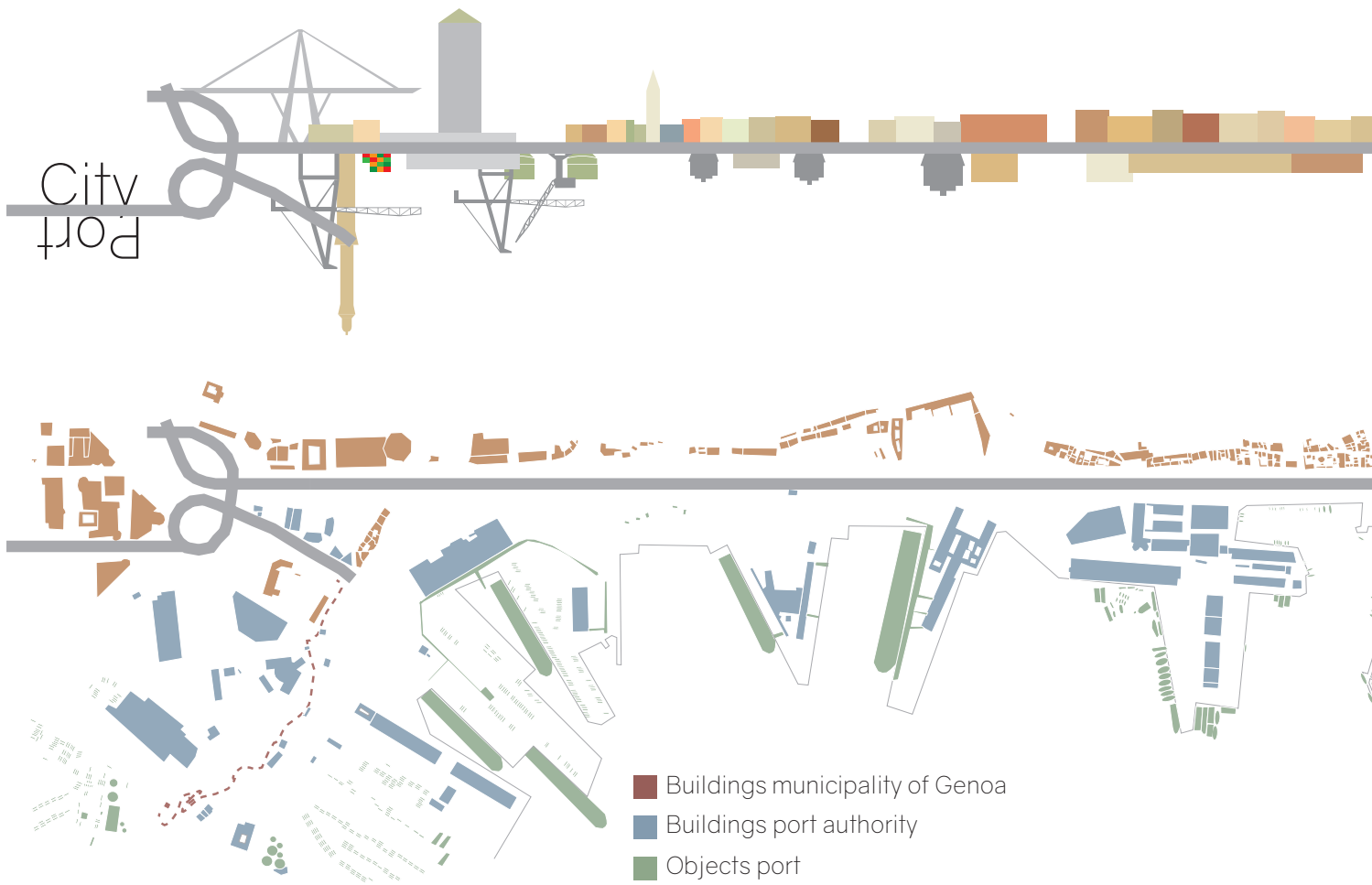


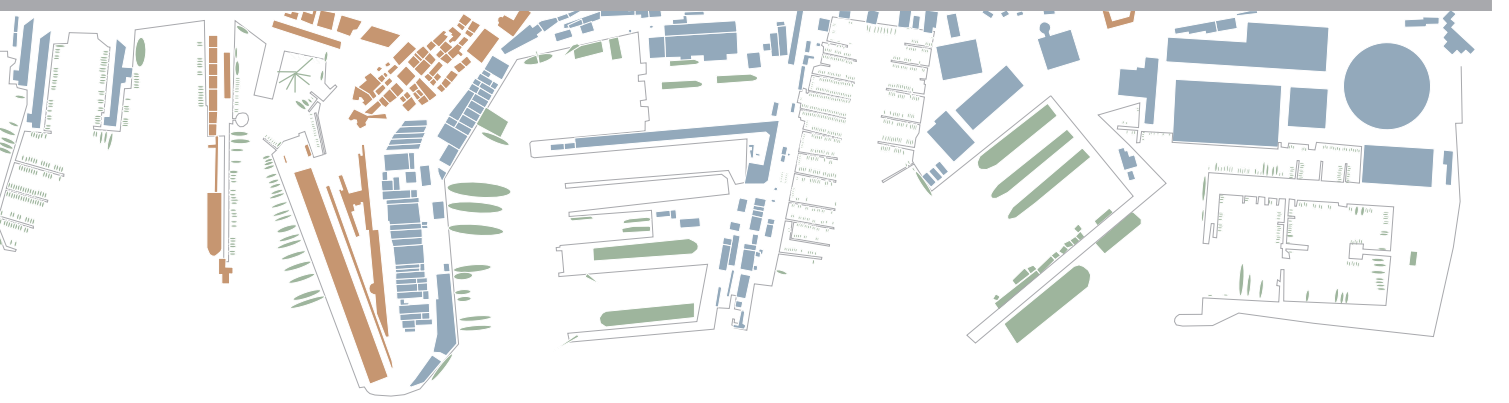
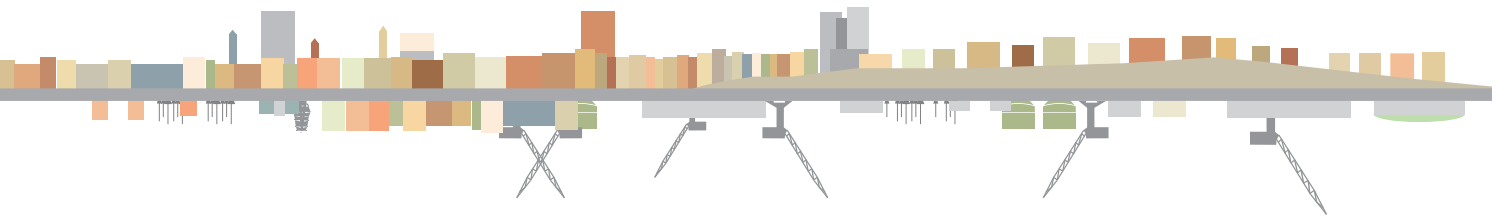
Vertical panorama's



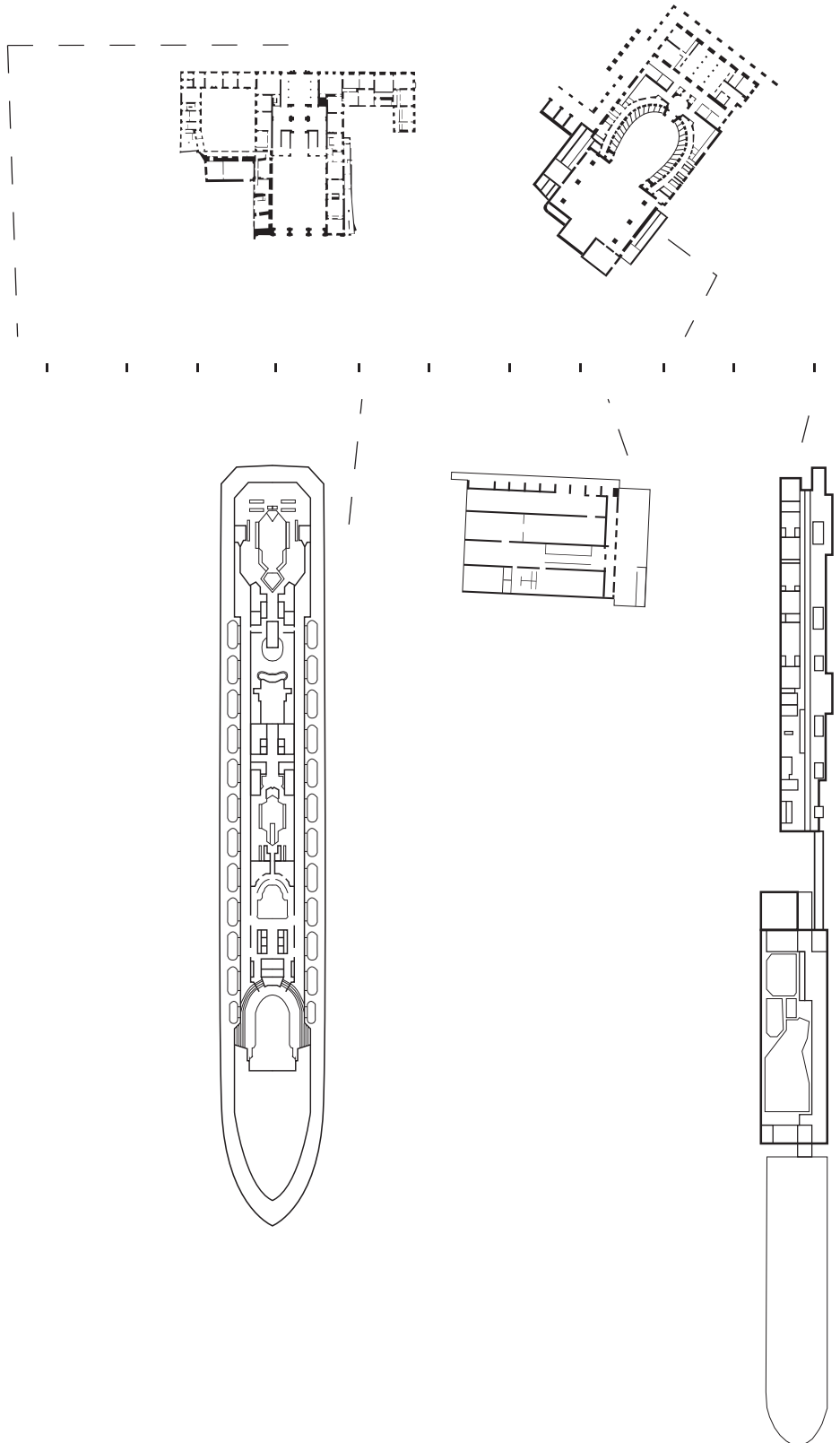


# The port versus the city

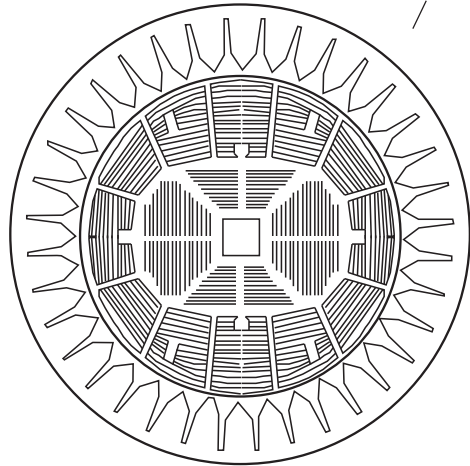
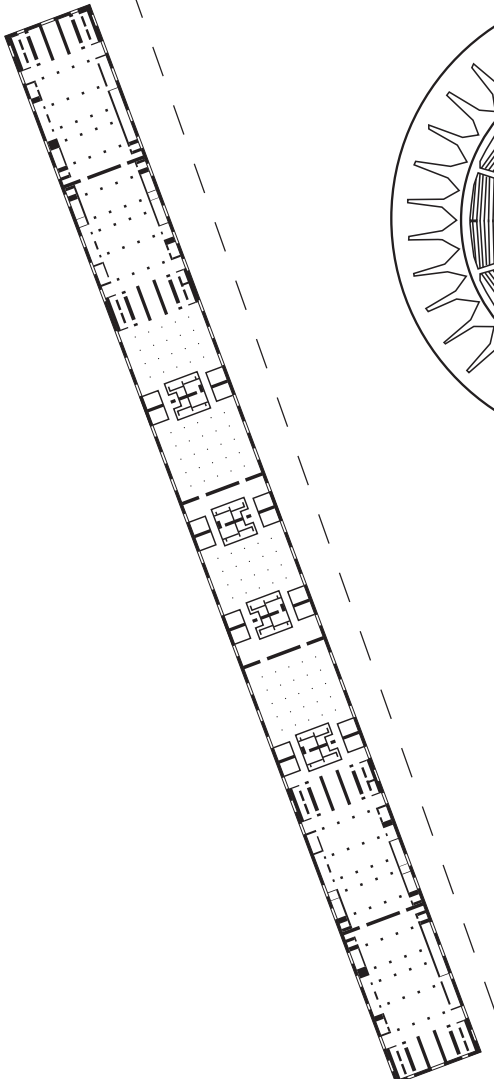
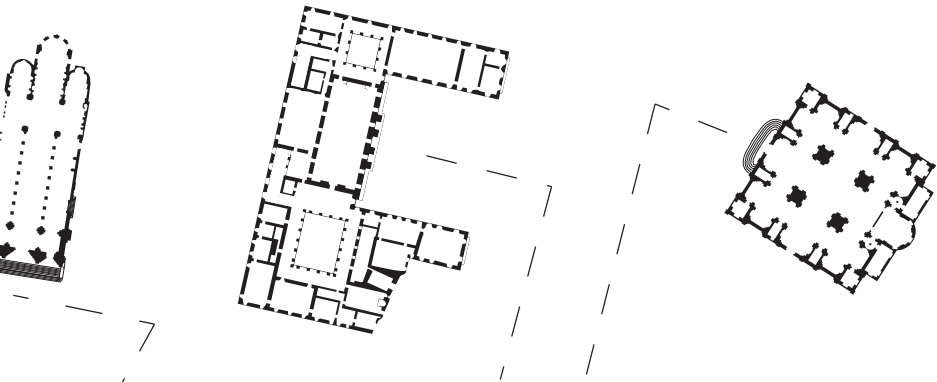




# Boulevard of the giants







Morandi bridge



# Stazione Marittima



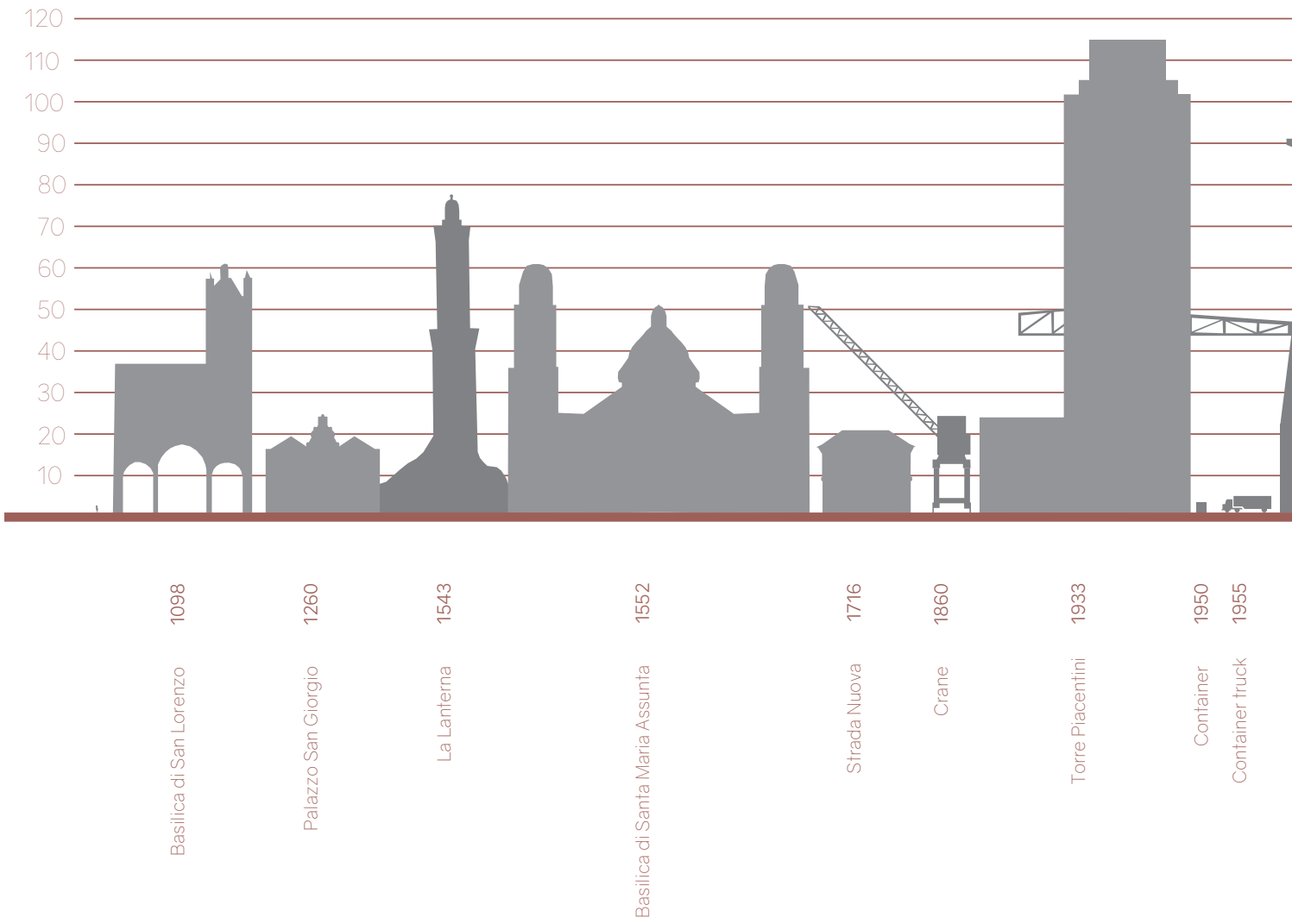
Sopraelevata

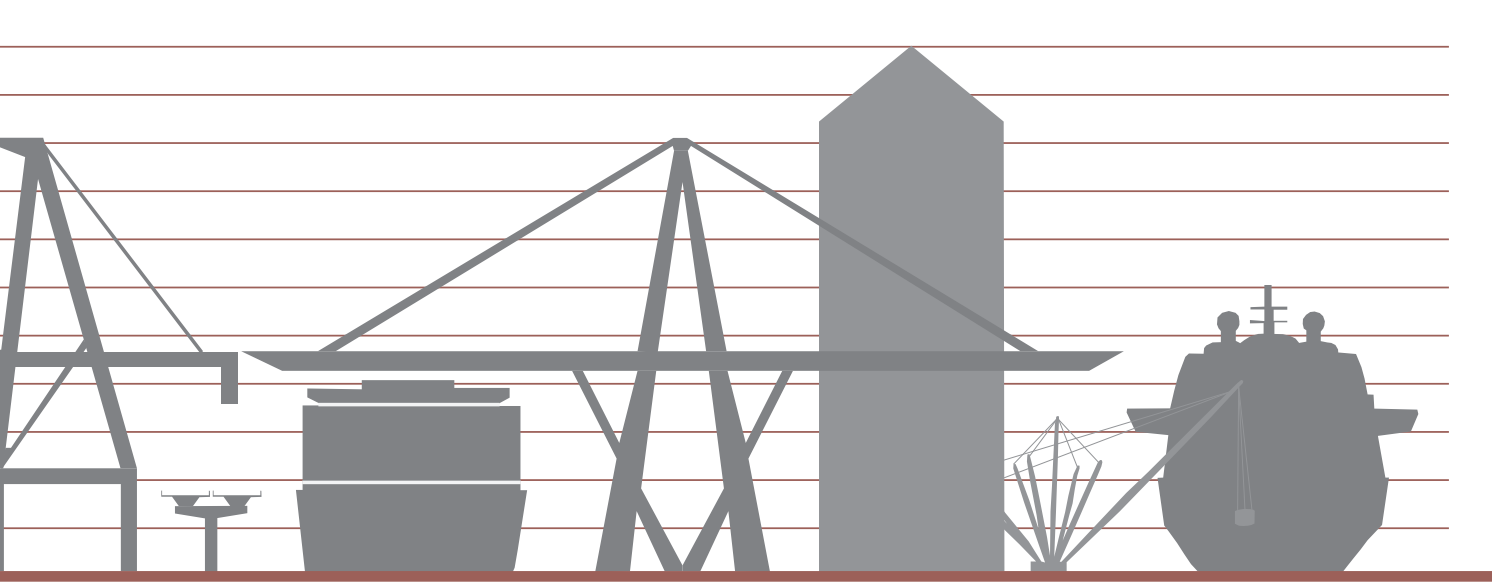


# Sopraelevata



# Development of scale





Container crane 1960

Sopraelevata 1965

Container ship 1966

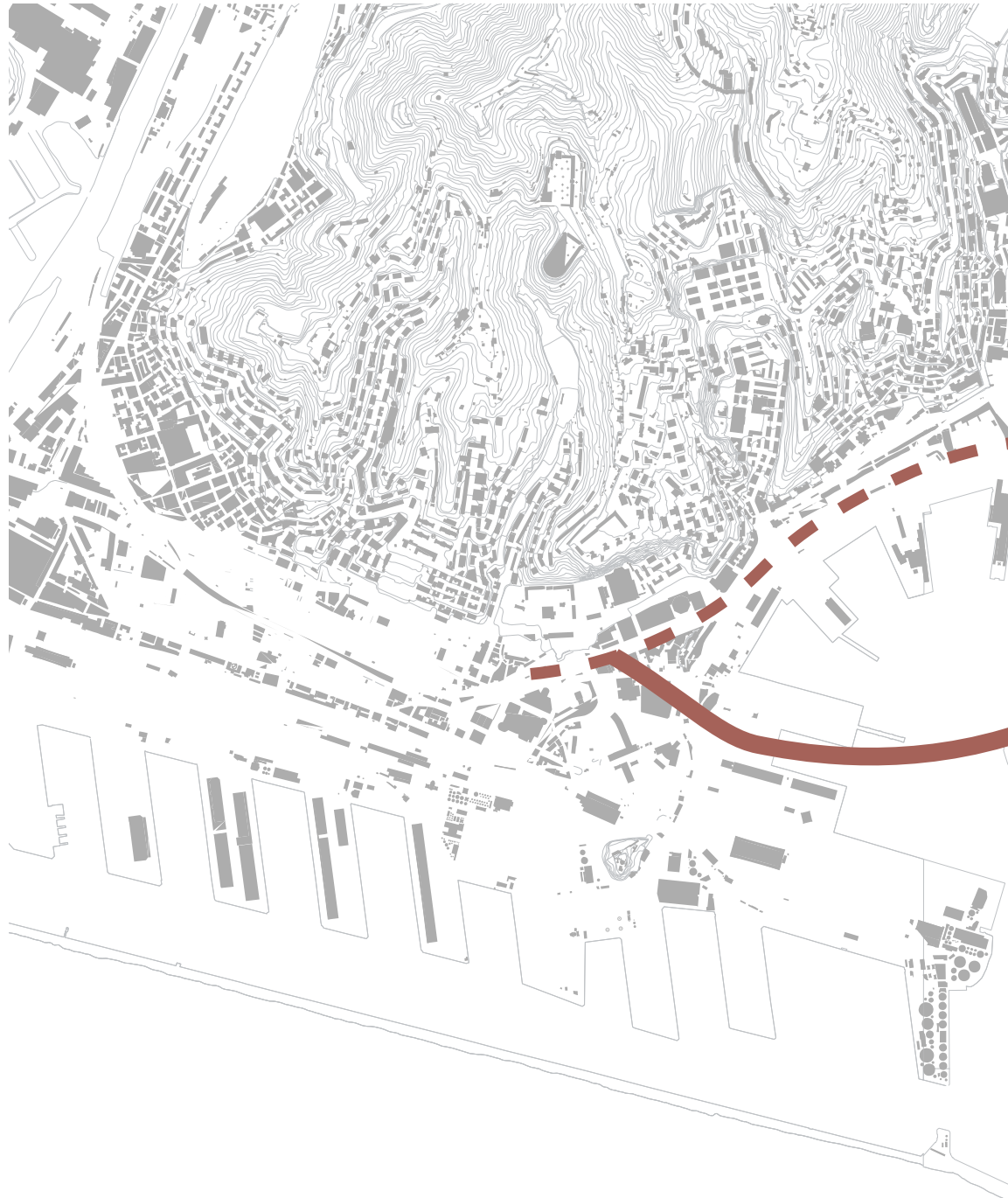
Morandi bridge 1967

Maifone tower 1992

Il bigo 1992

Splendida cruise 2009

# Future of the Sopraelevata







The site

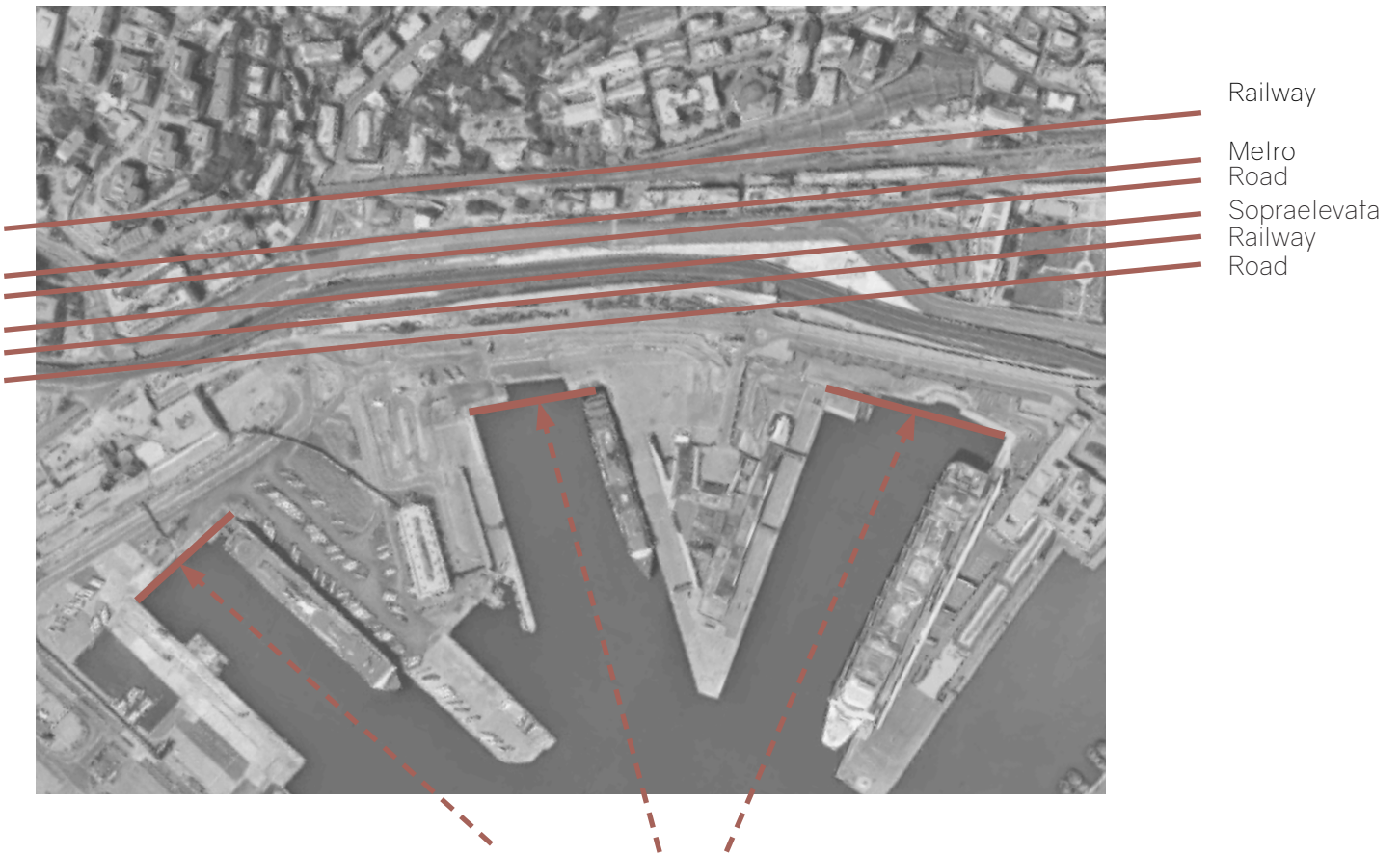




ea

City center

# Linearity on site





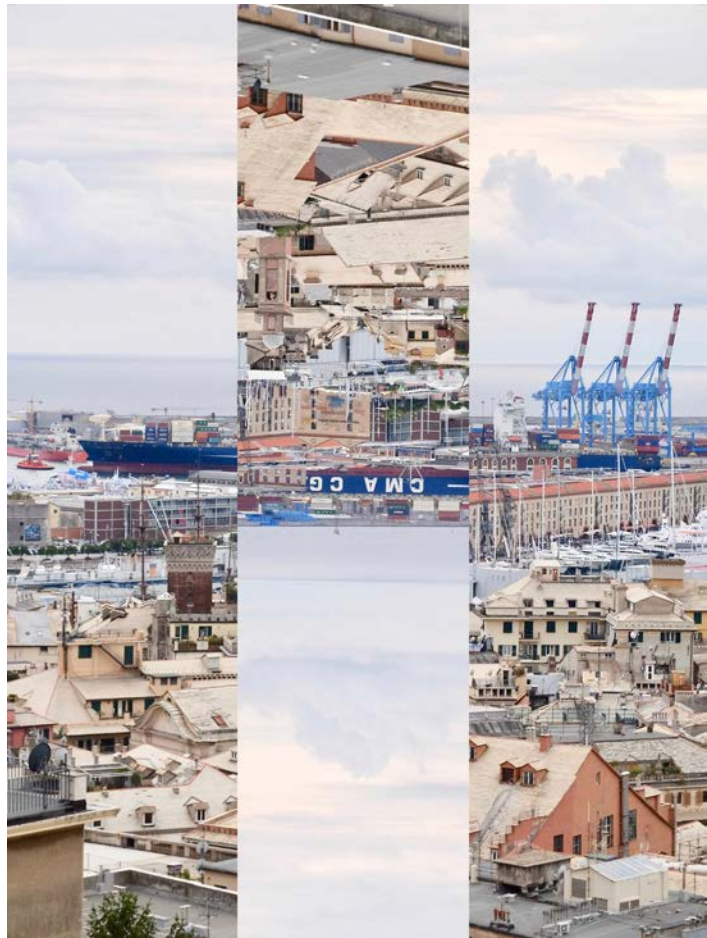
From city to sea

sea

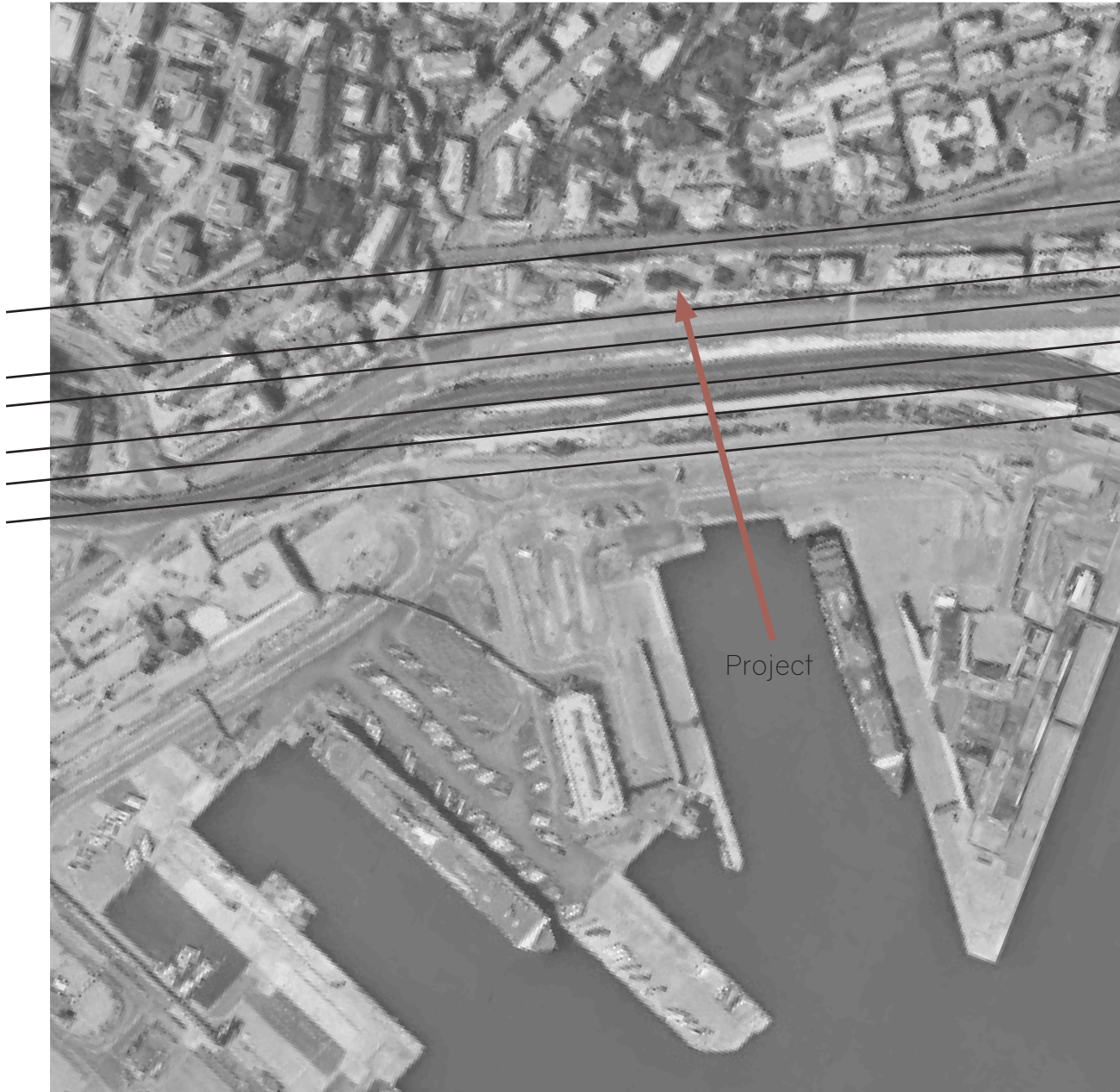
port

city





# The project







Railway

Metro

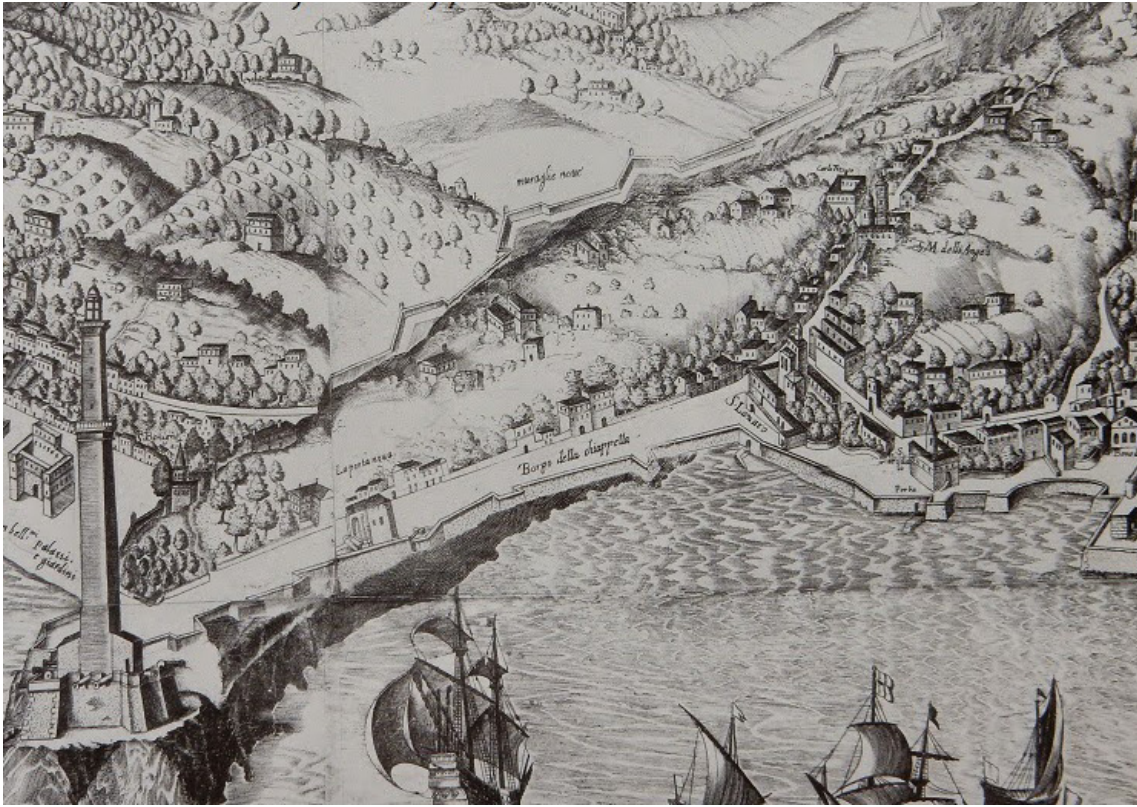
Road

Sopraelevata

Railway

Road

# History of the location

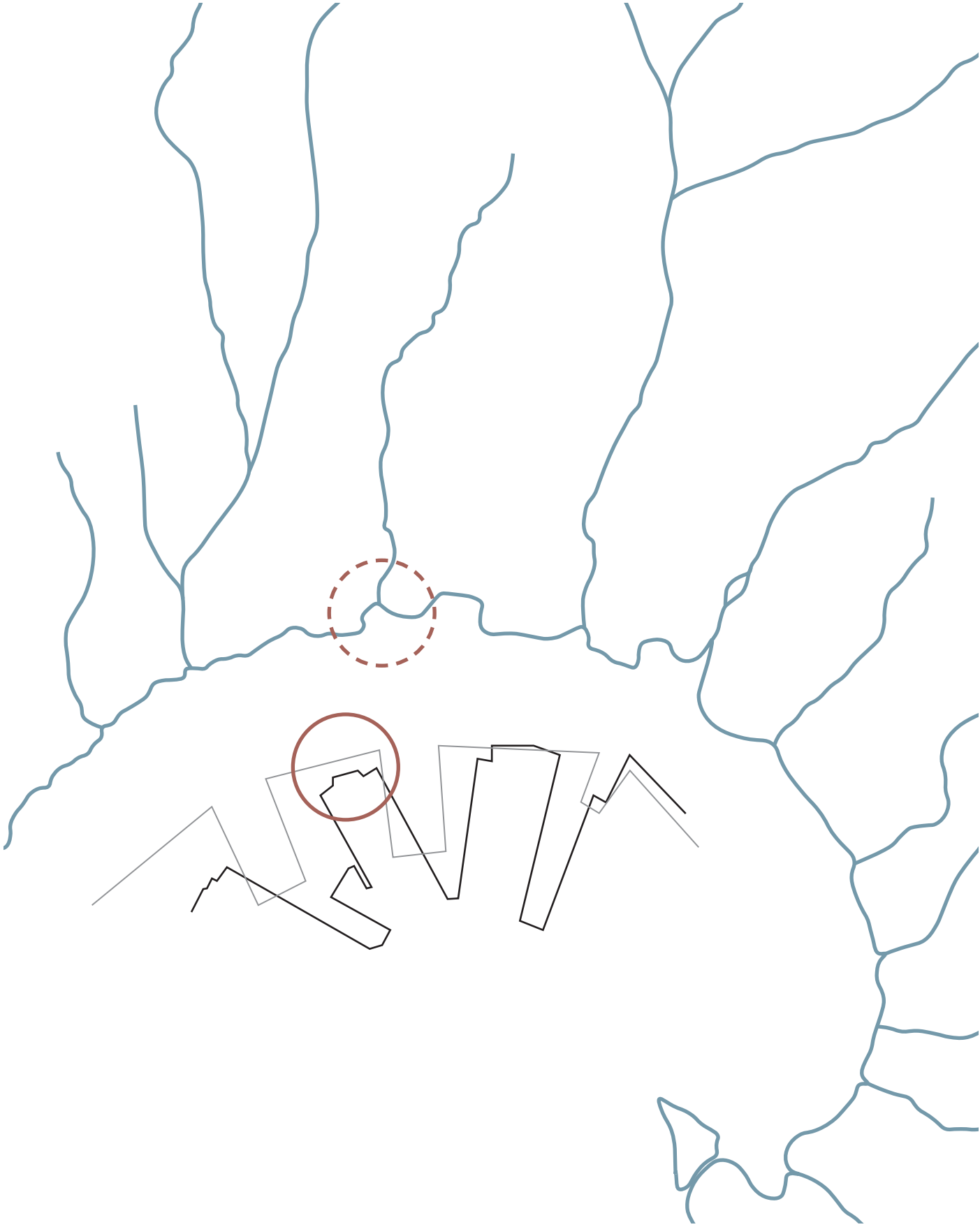








Old rivers vs new waterfront



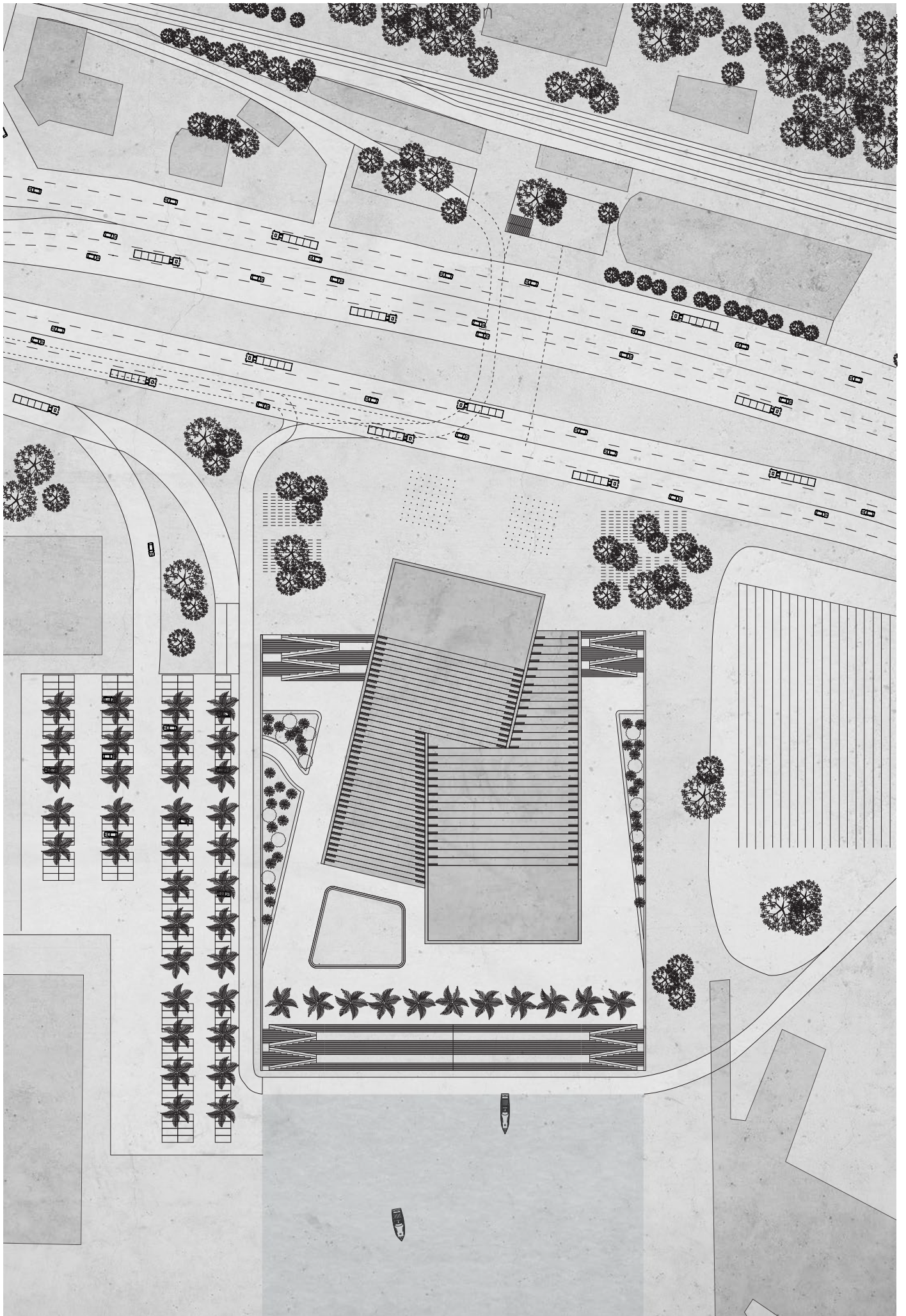
City-Sea focus



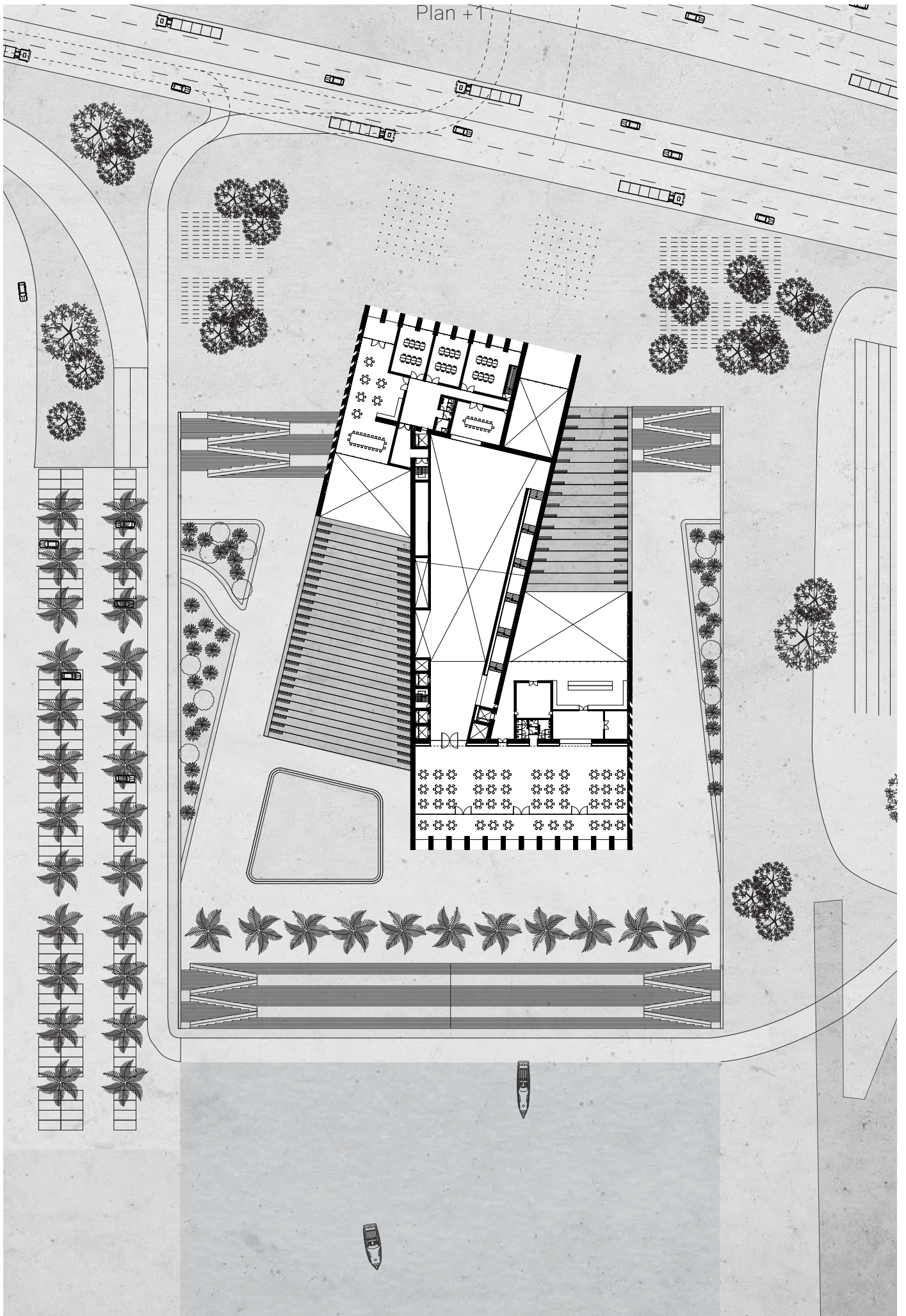
Site plan



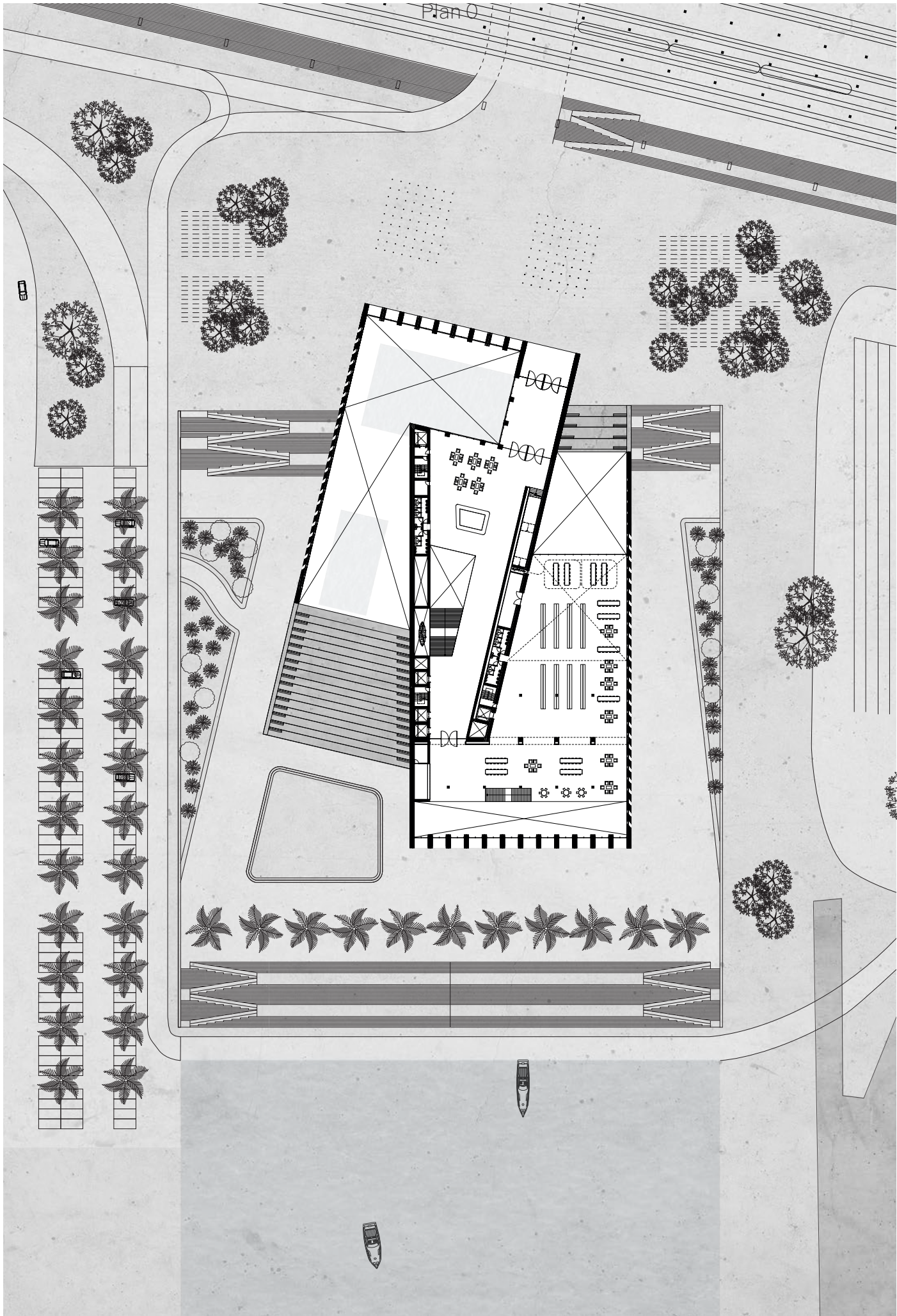


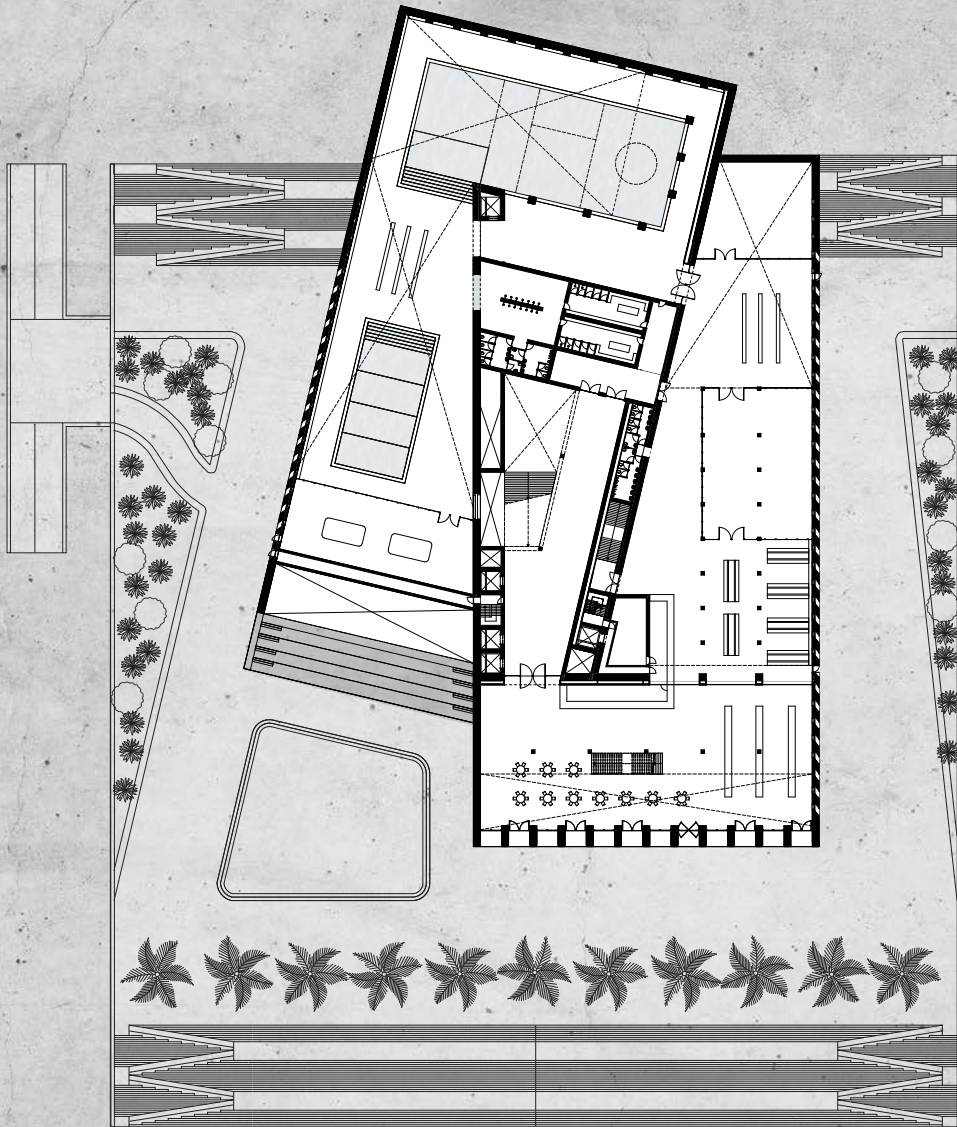


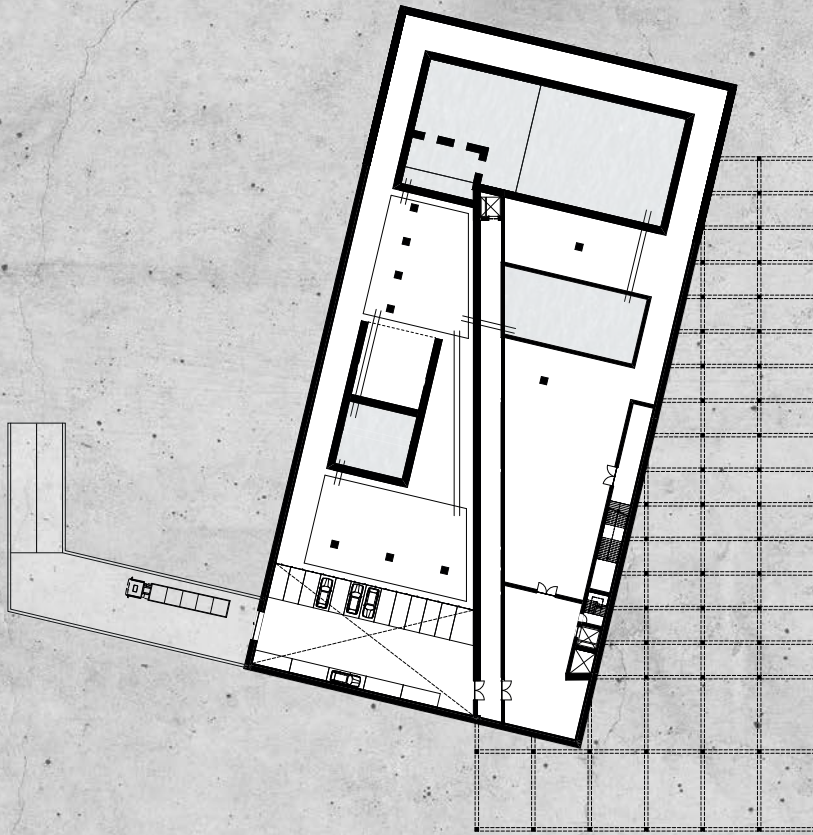
Plan +1



Plan 0

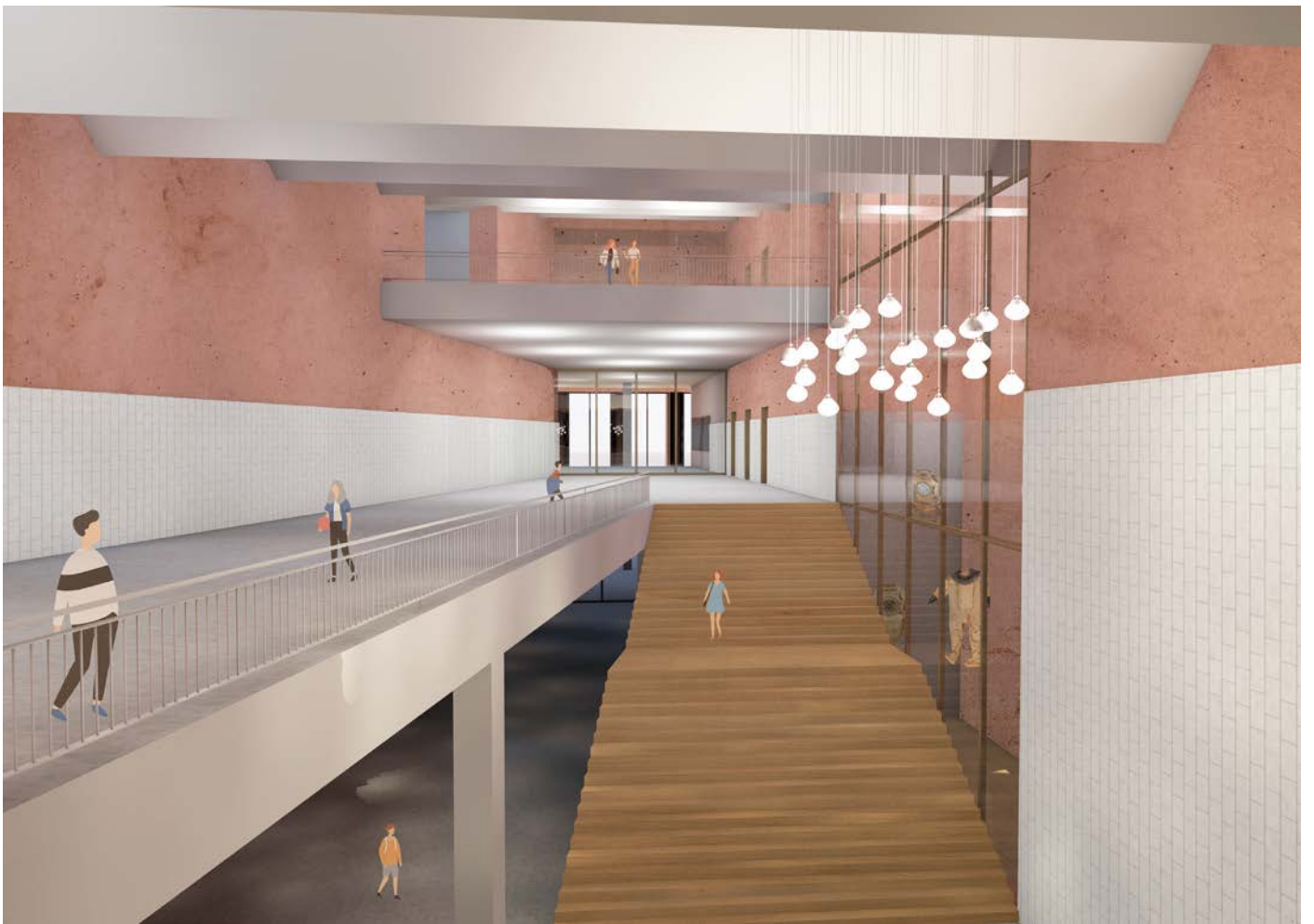






Entrance hall

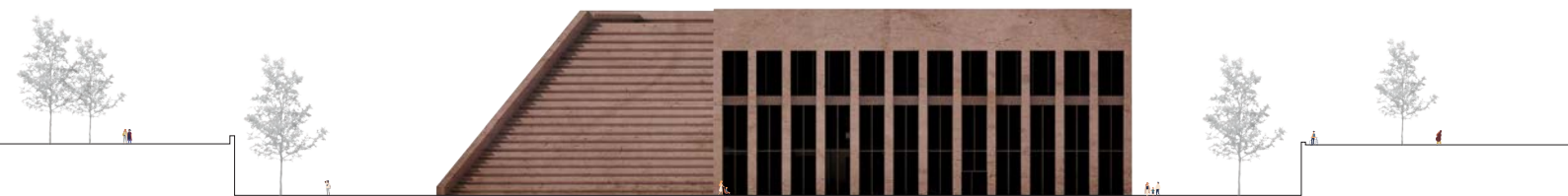




# Facades







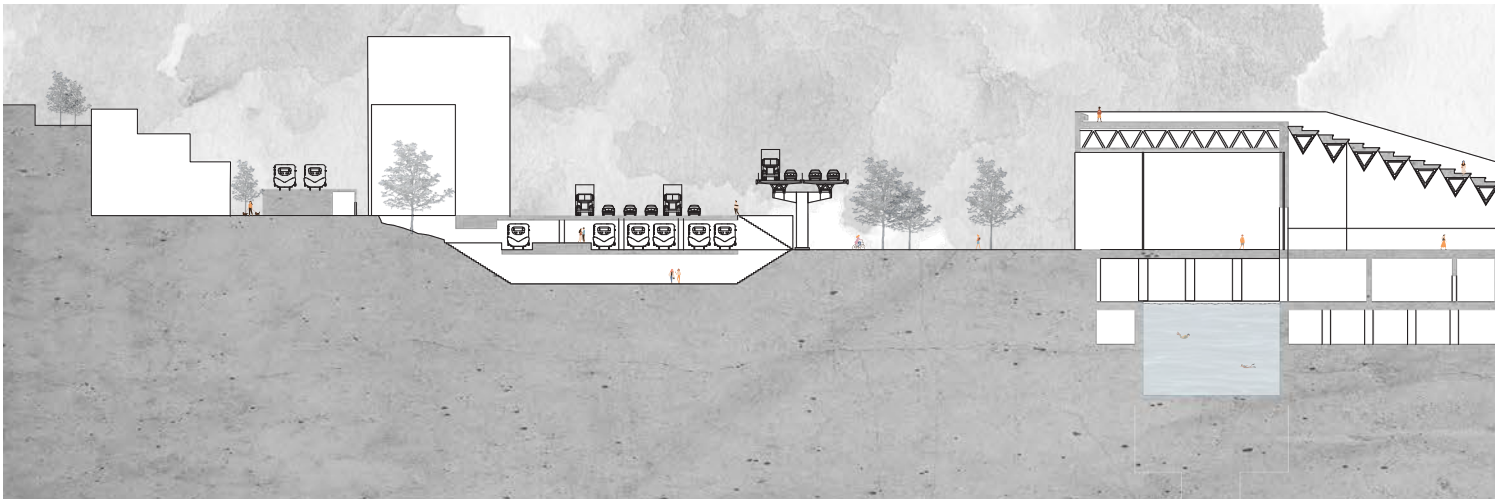
Library and coffee bar

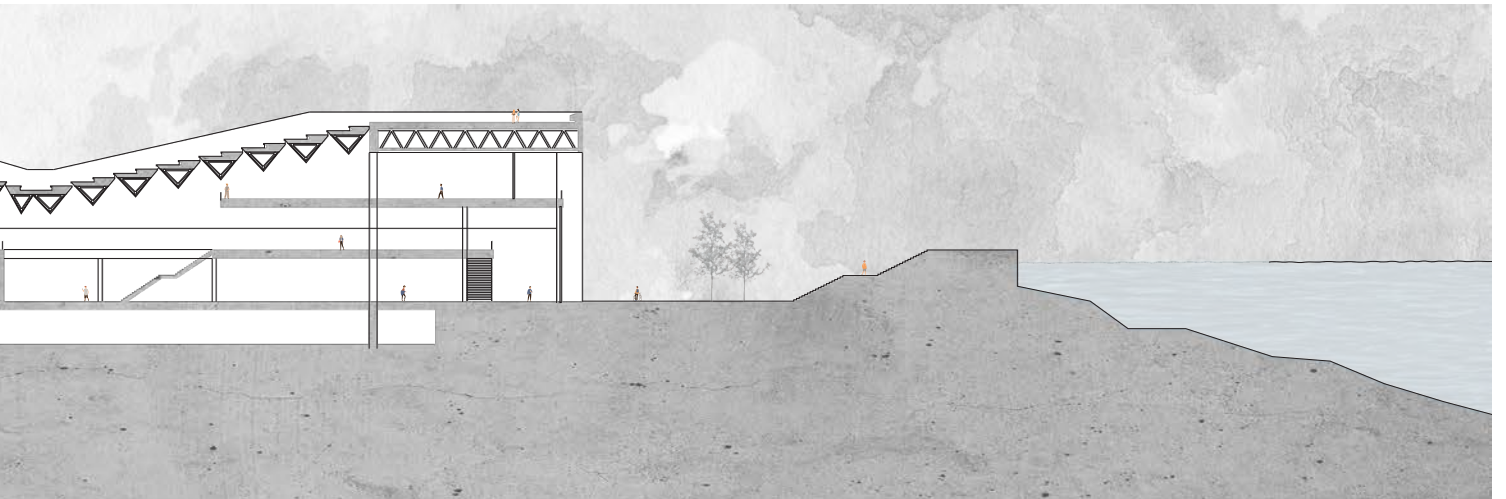


# Scuba diving pools

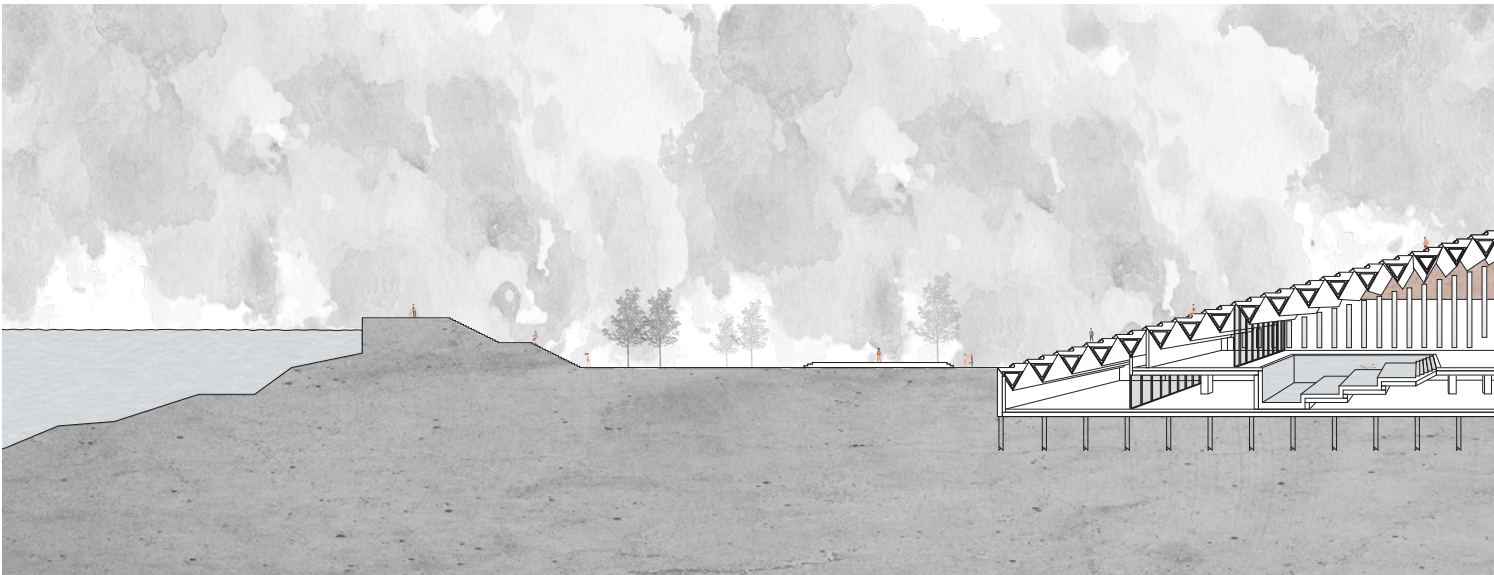


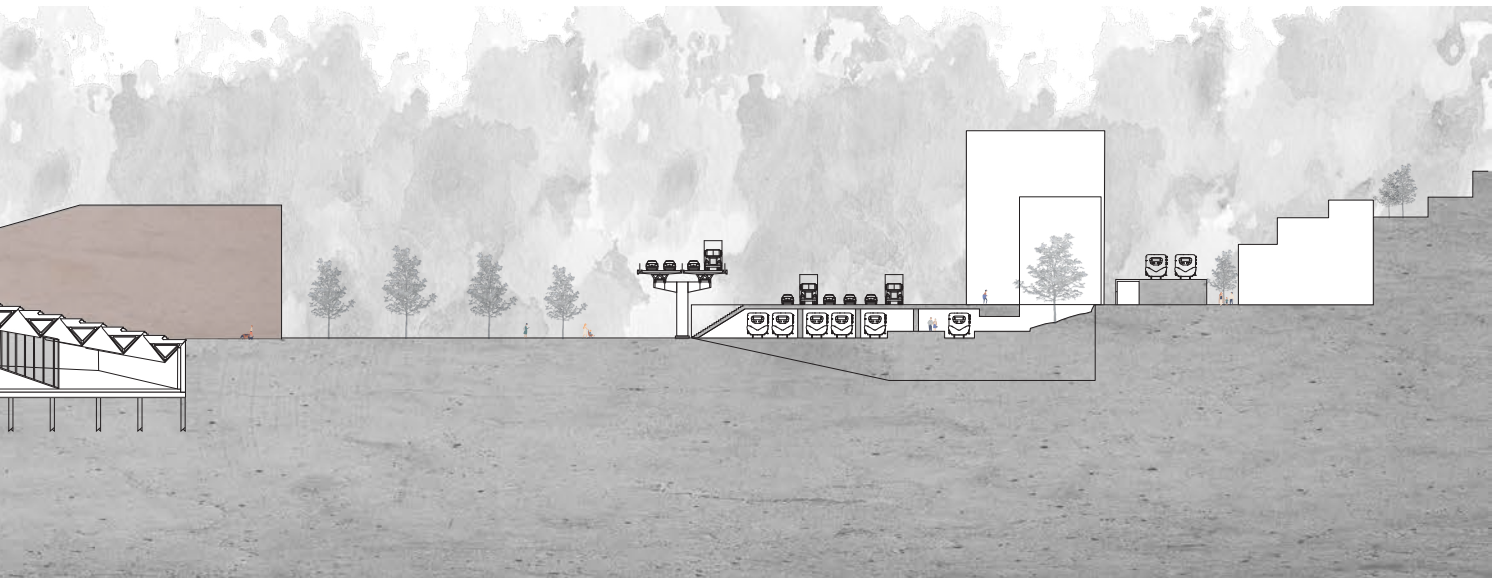
Section AA





Section BB, CC

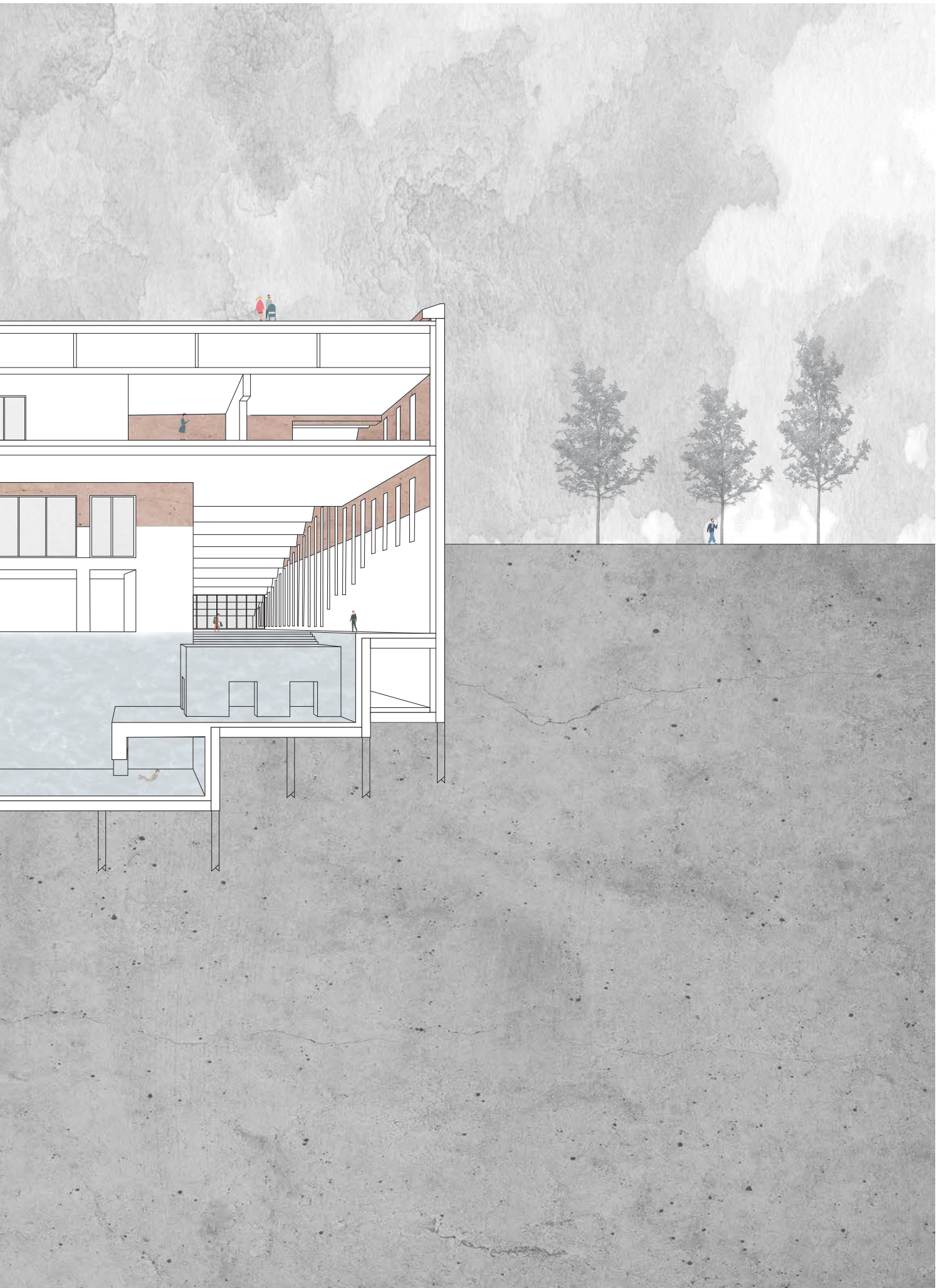




Section DD'



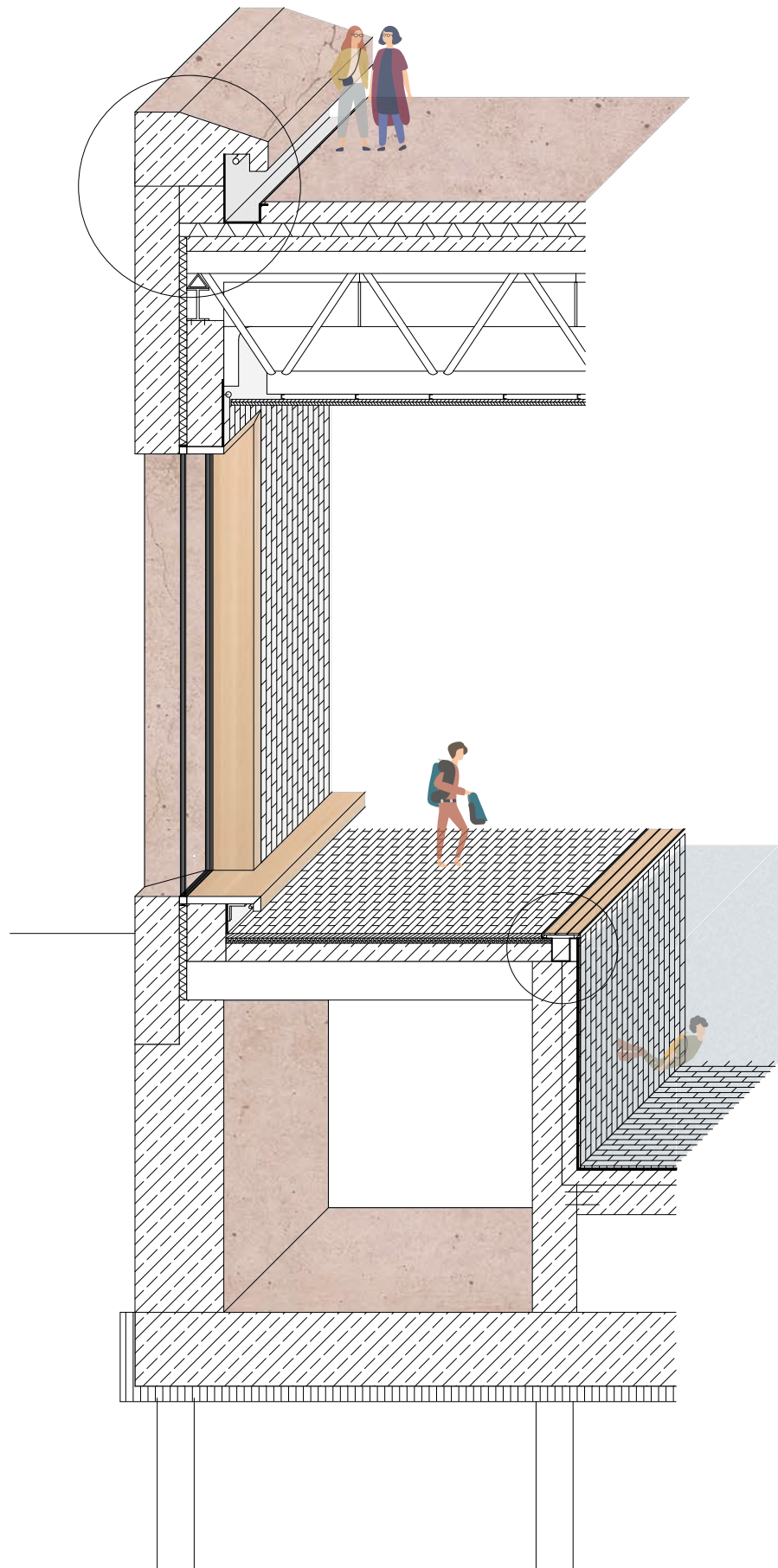


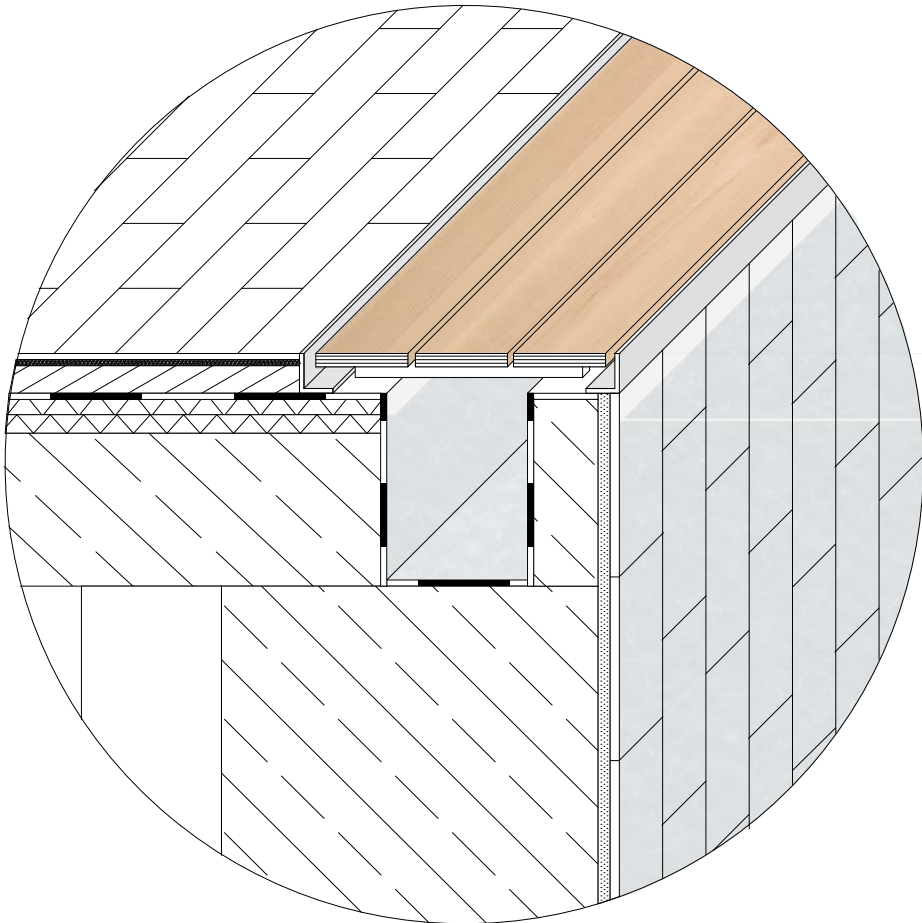
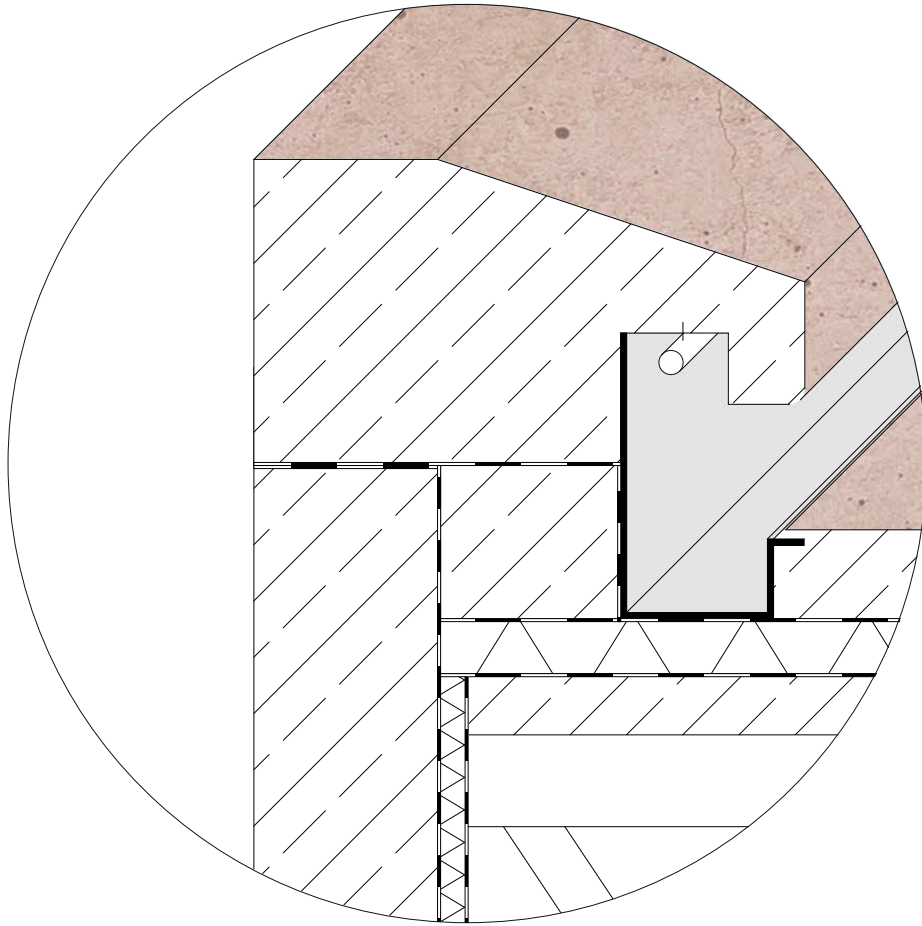




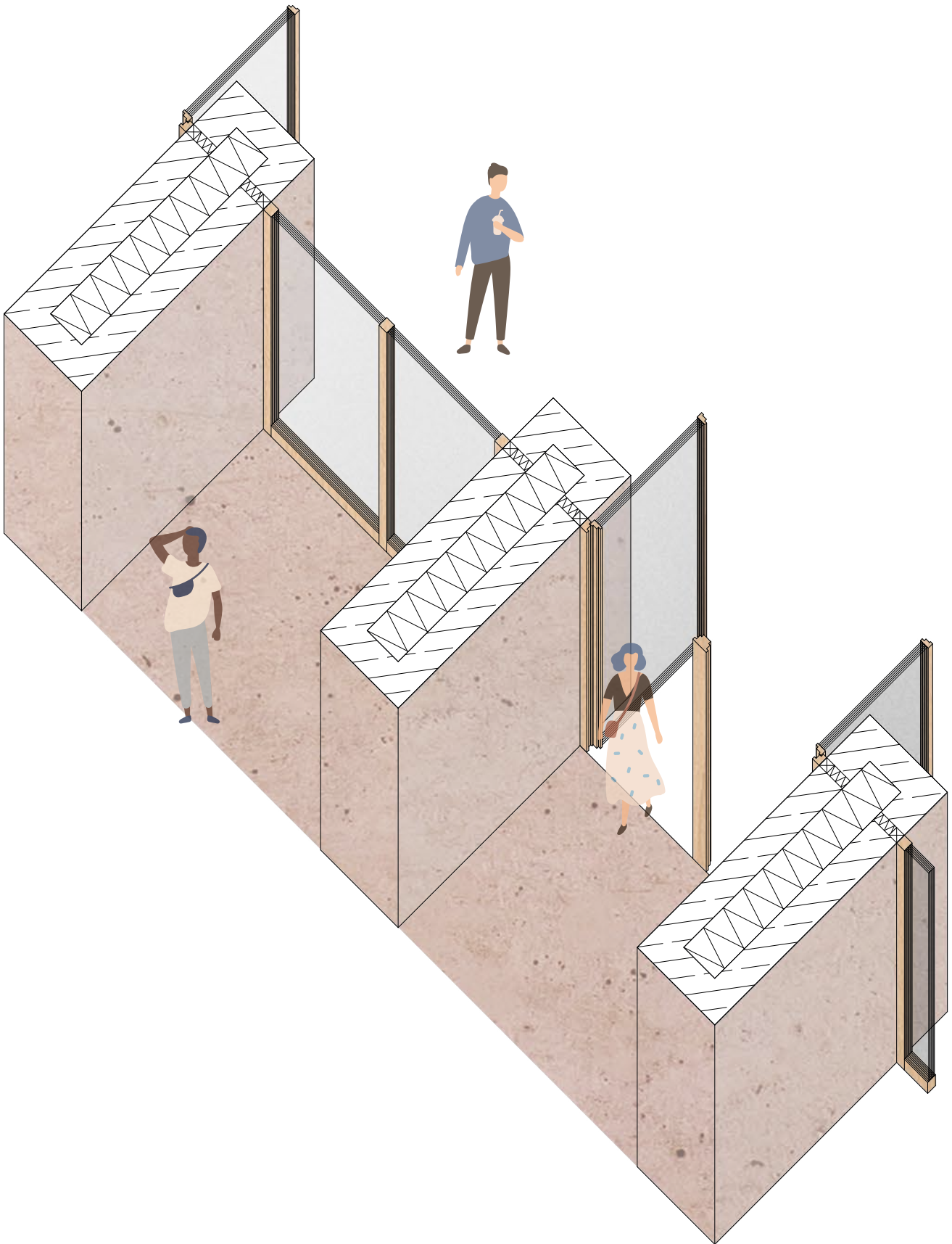


# Vertical facade fragment



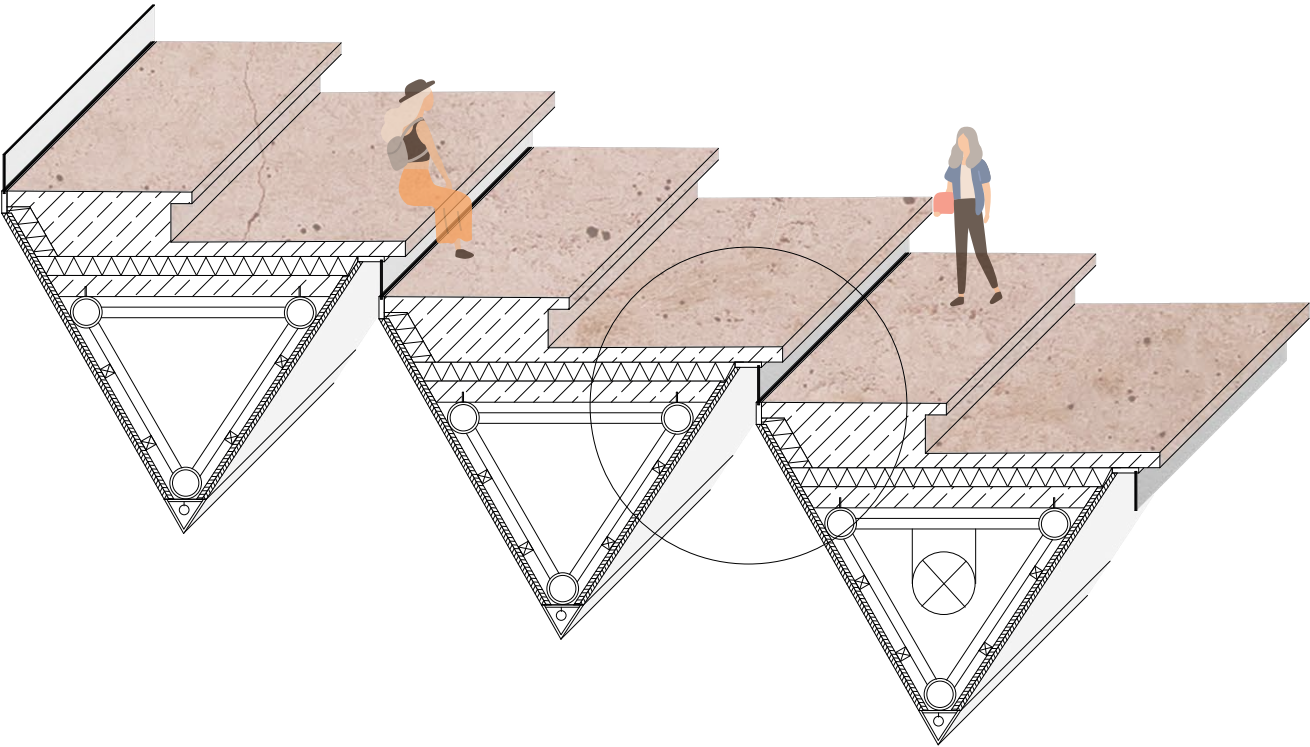


Horizontal facade fragment

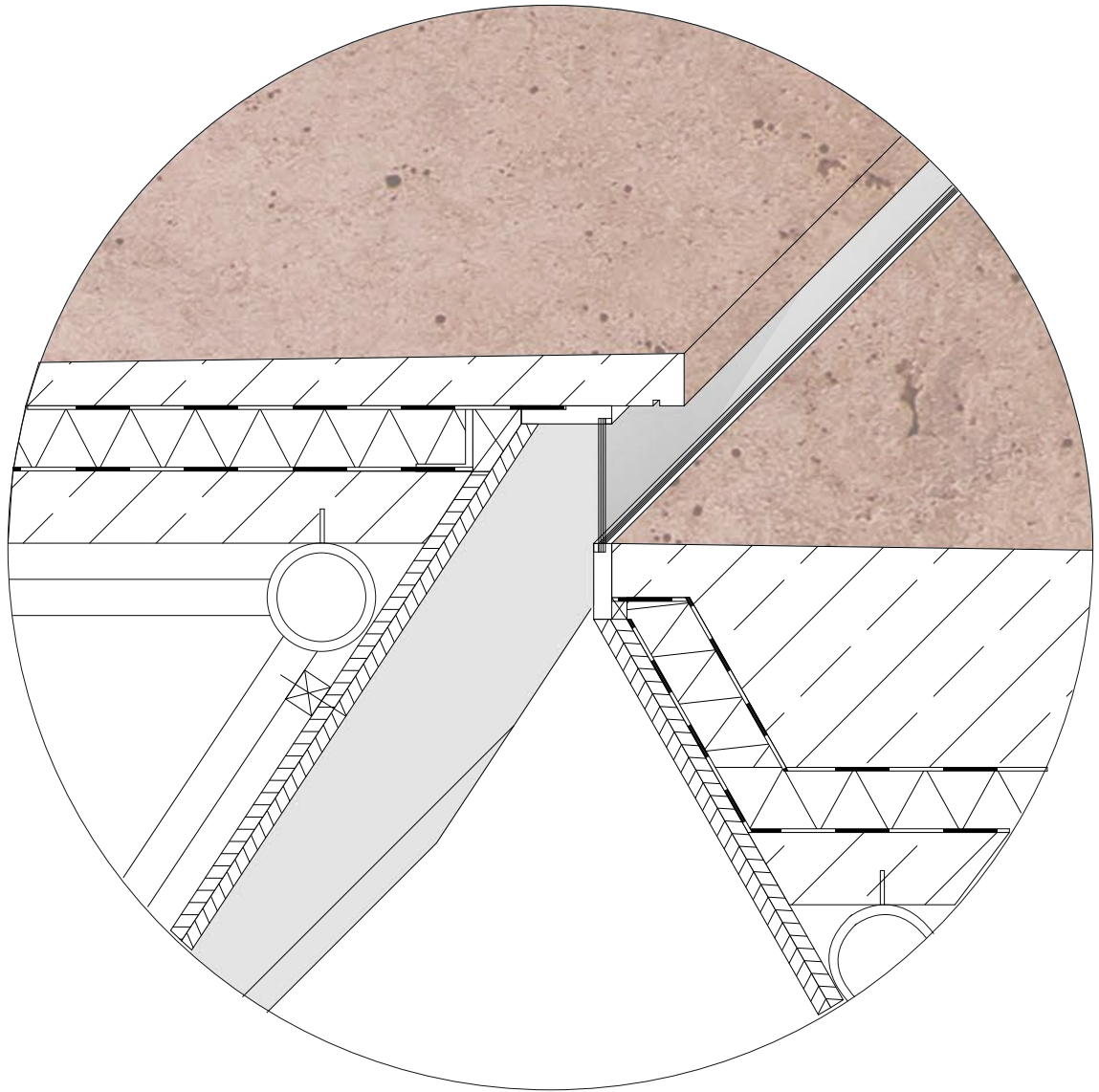




Roof fragment







Window detail

