

# DRAWING SET

JIENAN WANG  
5117240

## AXONOMETRIC VIEW OF HOUSING COMPLEX





# GROUP SITE PLAN 1:10000

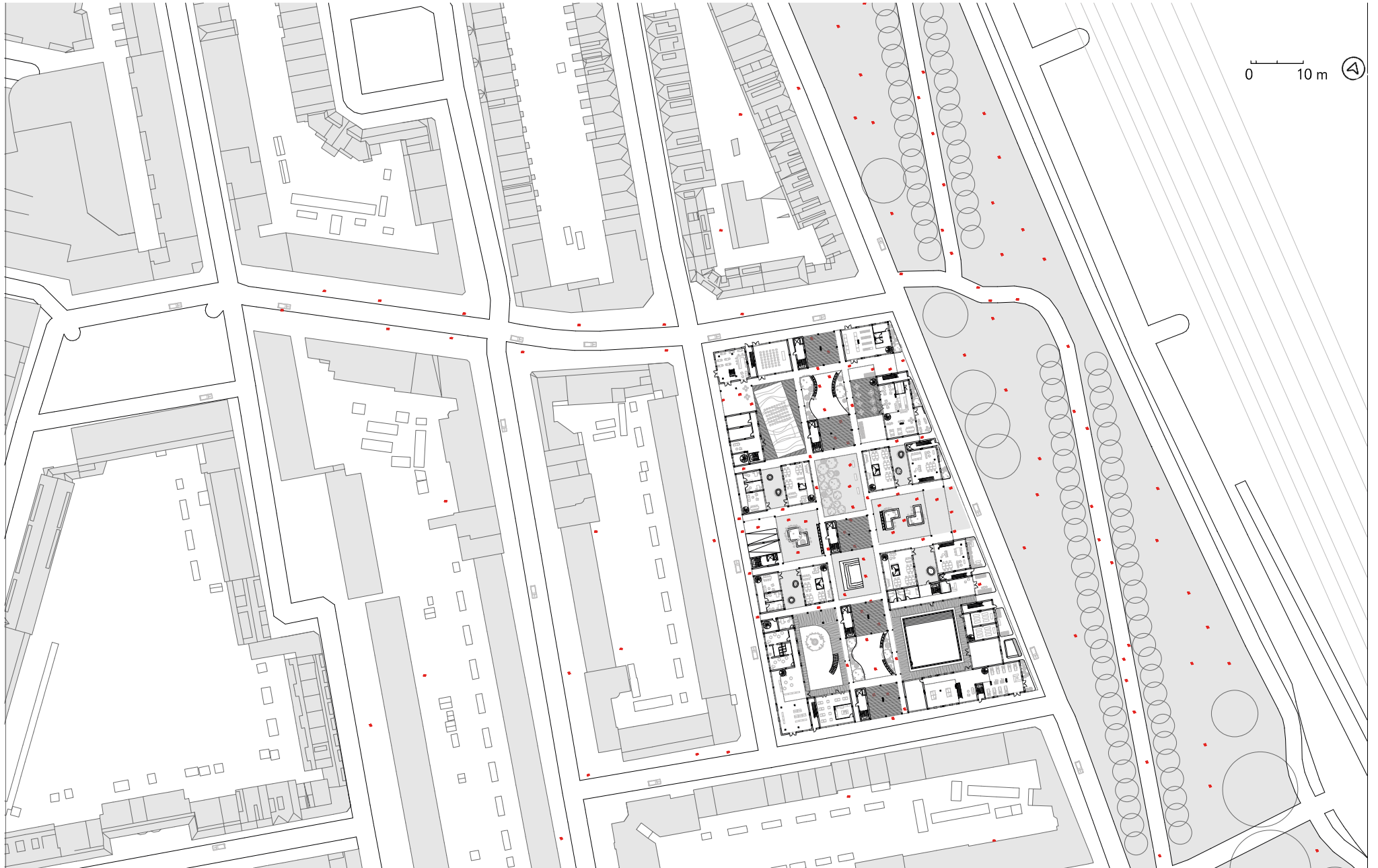


# SITE PLAN 1:1000

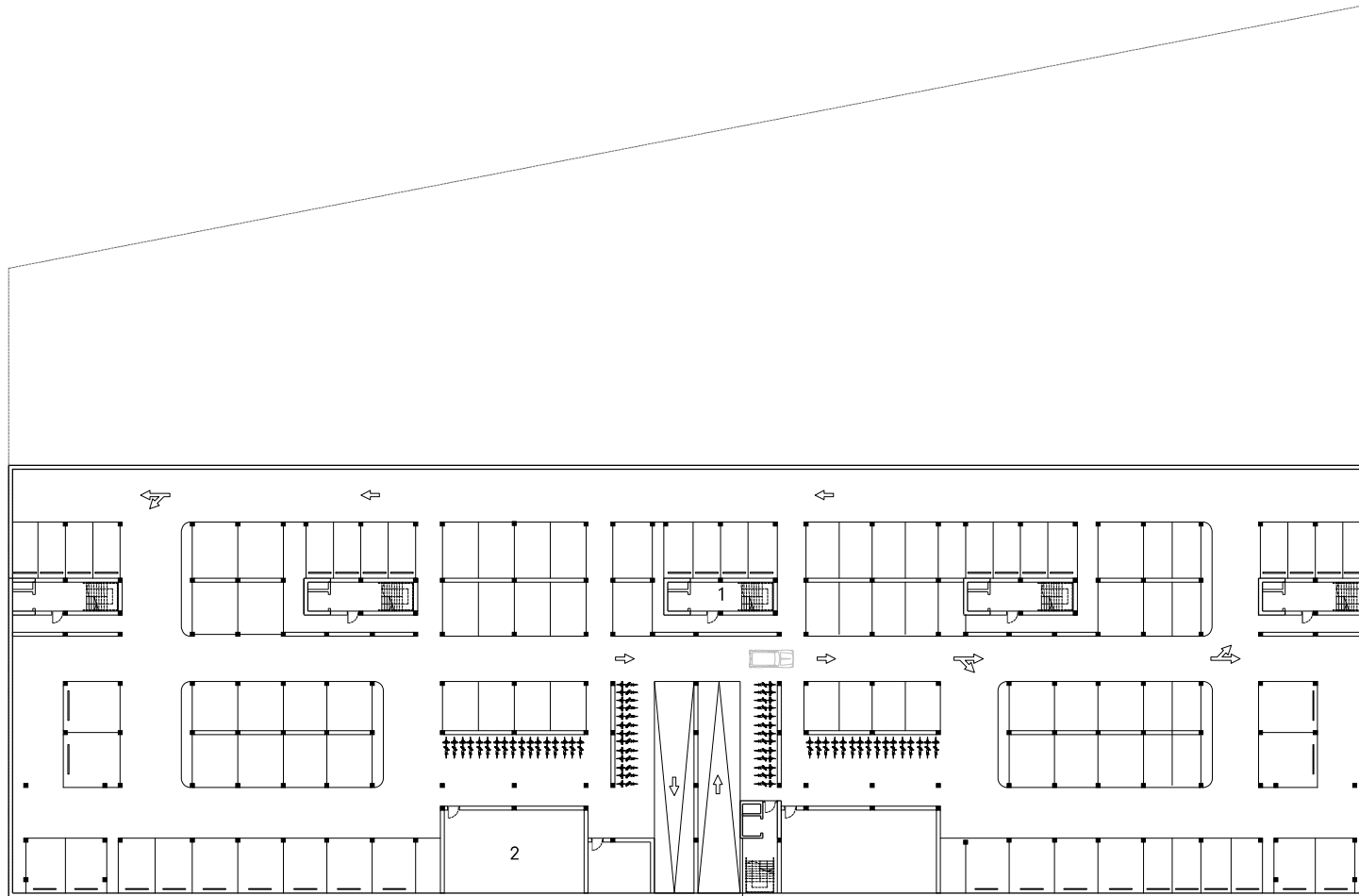




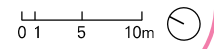
# URBAN IMPLEMENTATION 1:500



# LEVEL -1 - PARKING

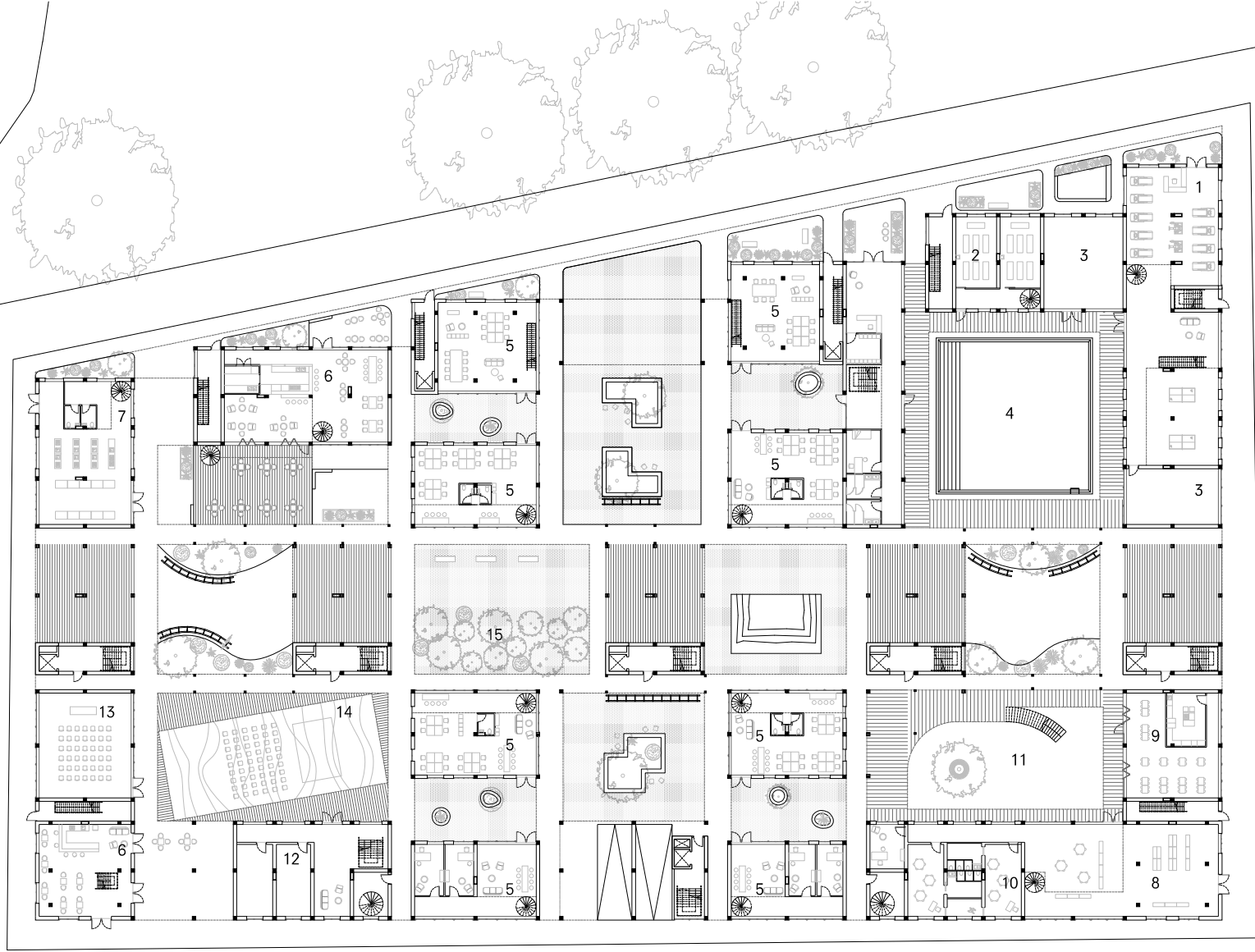


1 circulation core  
2 service room

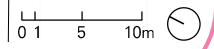




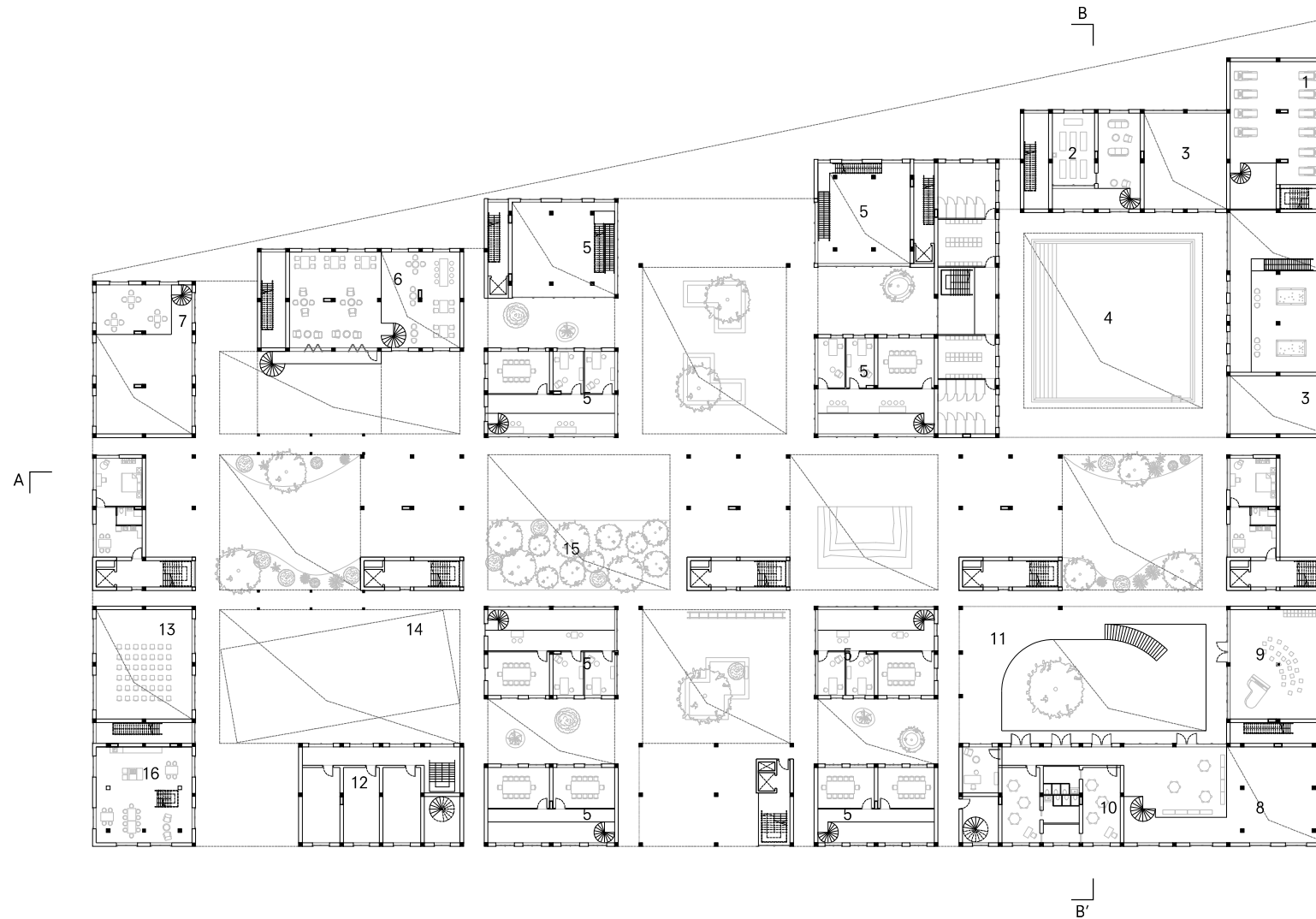
# GROUND FLOOR - MULTIPLE COURTYARDS



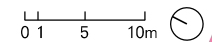
- 1 gym
- 2 yoga room
- 3 sports activity room
- 4 swimming pool
- 5 shared work space
- 6 cafe
- 7 cooking school
- 8 nursery entrance hall
- 9 dining hall
- 10 classrooms
- 11 playground
- 12 community office
- 13 event space
- 14 outdoor event space
- 15 tiny forest



# LEVEL 1

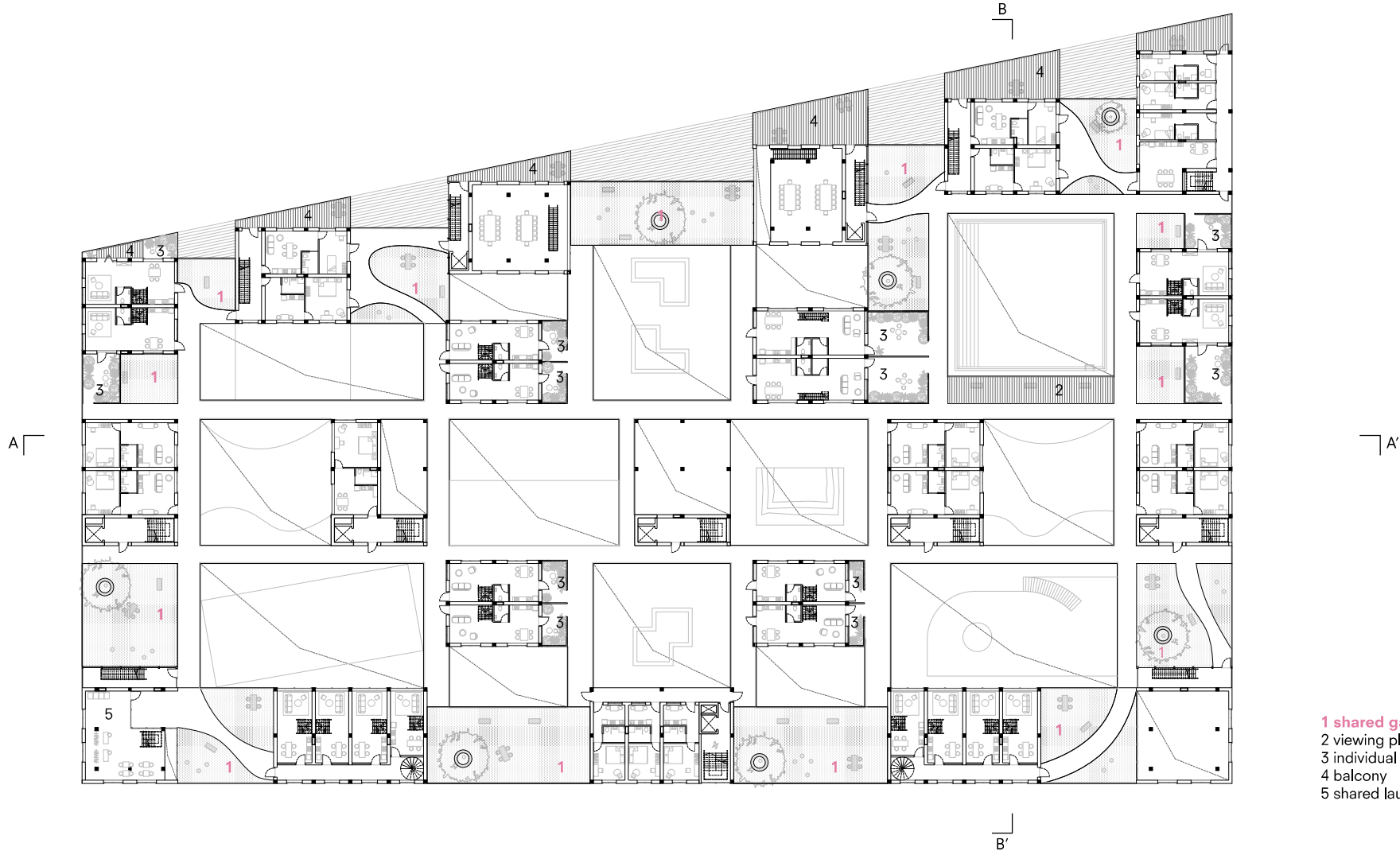


- 1 gym
- 2 yoga room
- 3 sports activity room
- 4 swimming pool
- 5 shared work space
- 6 cafe
- 7 cooking school
- 8 nursery entrance hall
- 9 bigger classroom
- 10 classrooms
- 11 outdoor gallery
- 12 community room
- 13 event space
- 14 outdoor event space
- 15 tiny forest
- 16 shared kitchen





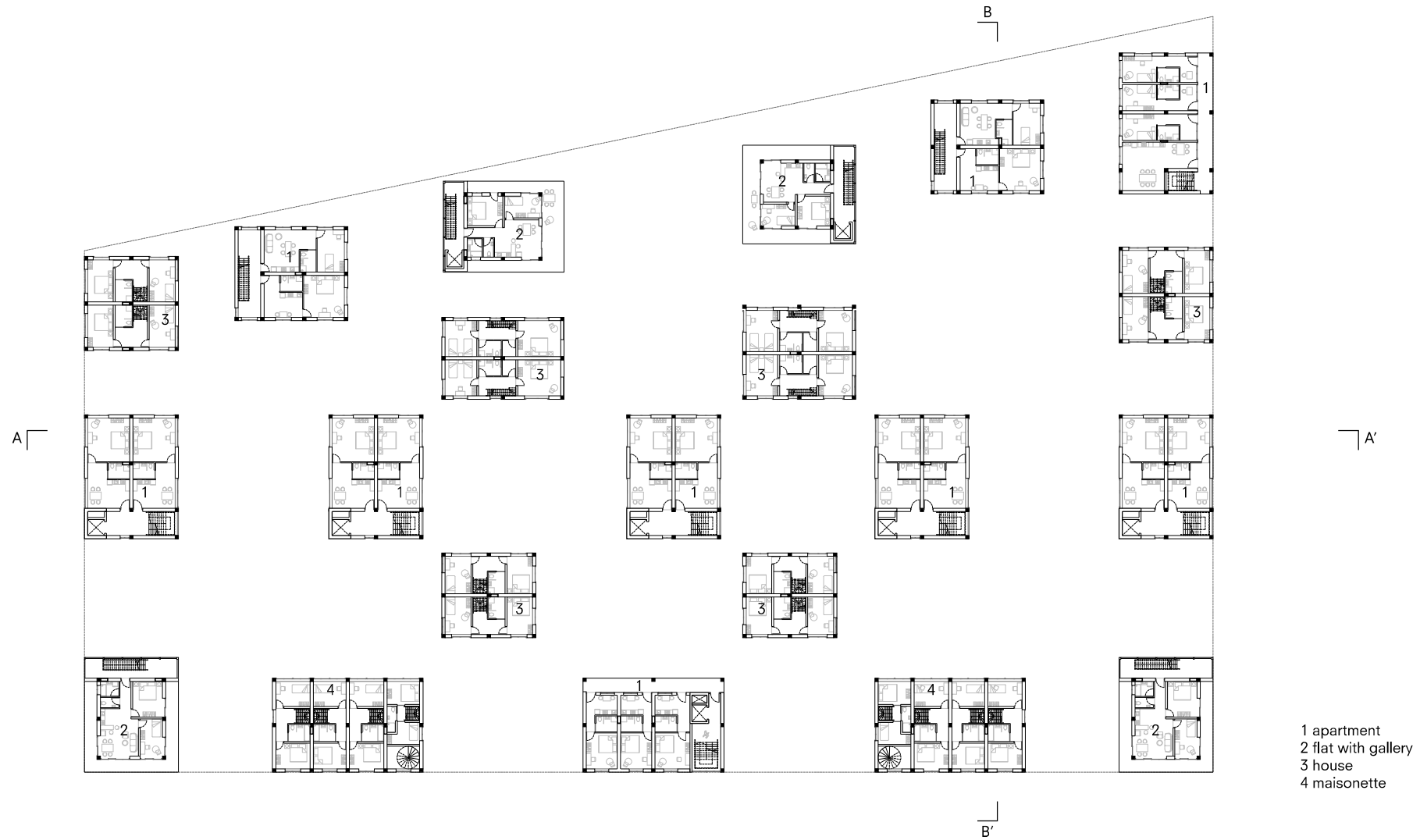
# LEVEL 2 - PLATFORM



- 1 shared garden
- 2 viewing platform
- 3 individual garden
- 4 balcony
- 5 shared laundry

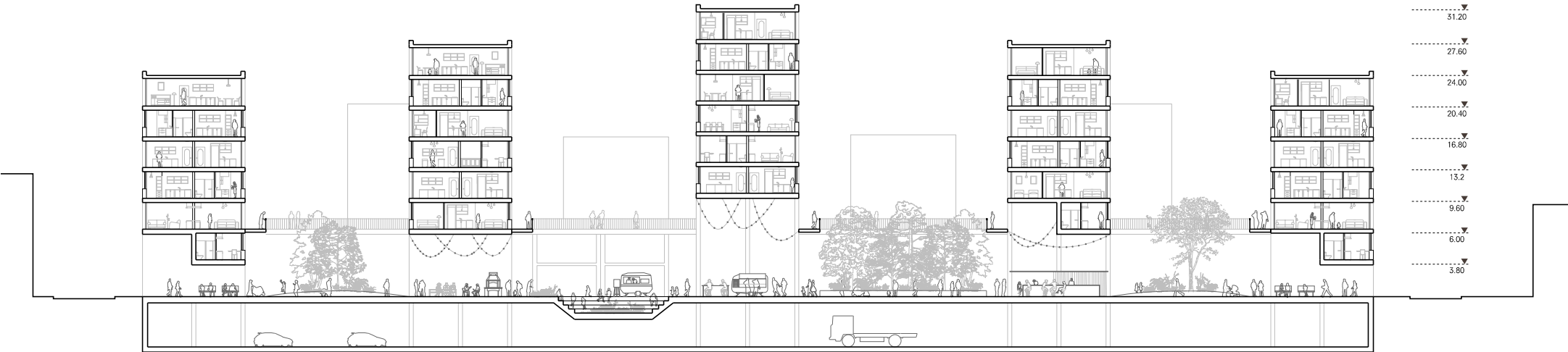


# LEVEL 3 - HOUSING



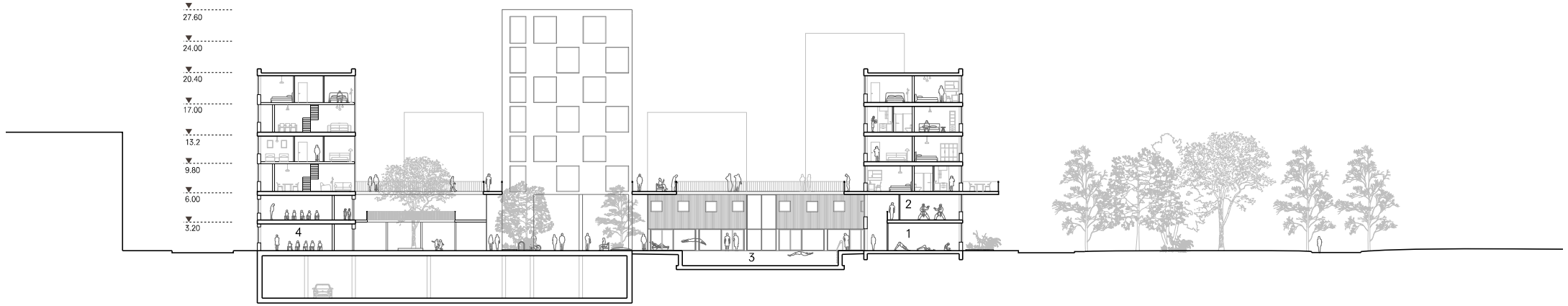


# SECTION AA'

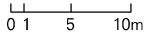


0 1 5 10m

# SECTION BB'



- 1 yoga room
- 2 activity room
- 3 swimming pool
- 4 classroom



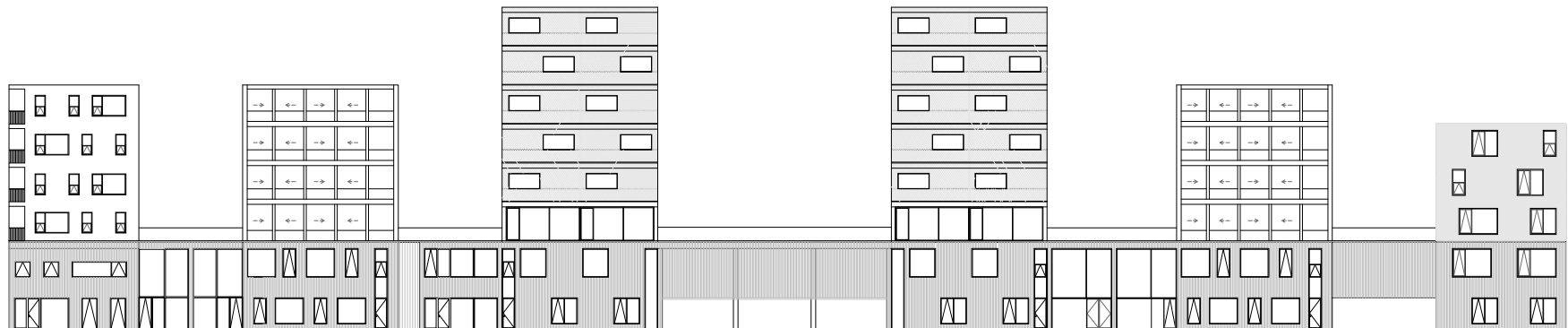


materialization

# ELEVATION



Elevation towards residential area

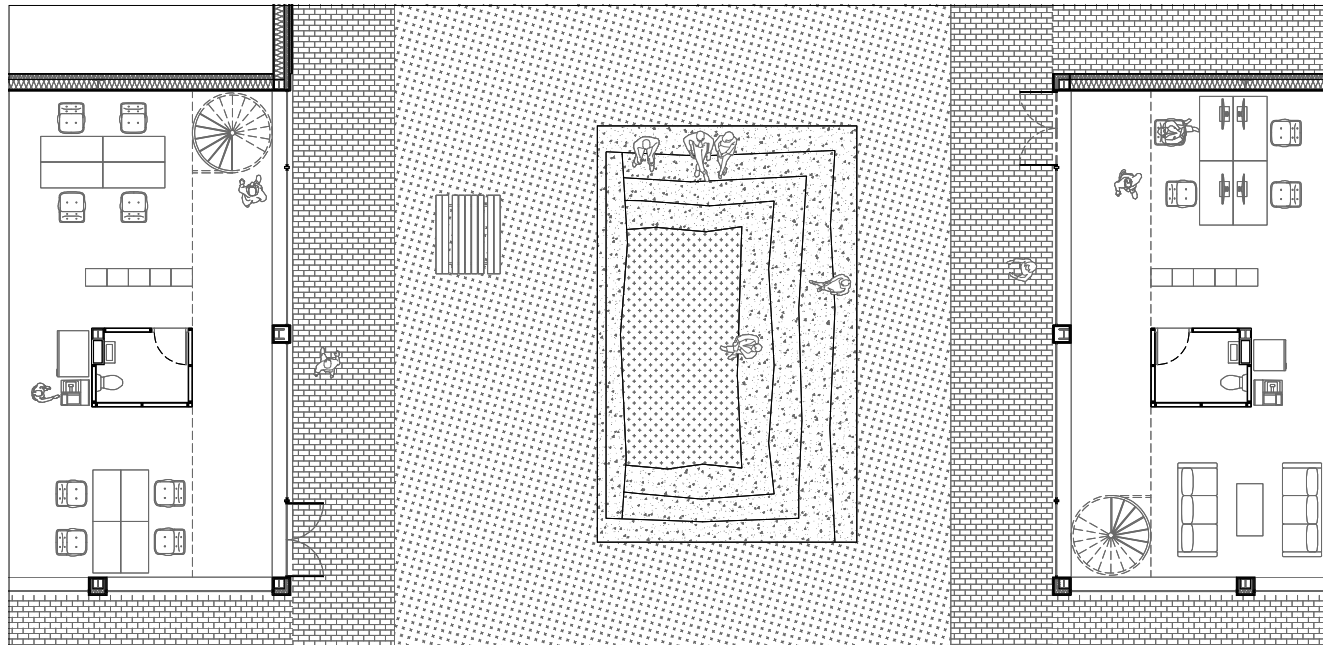
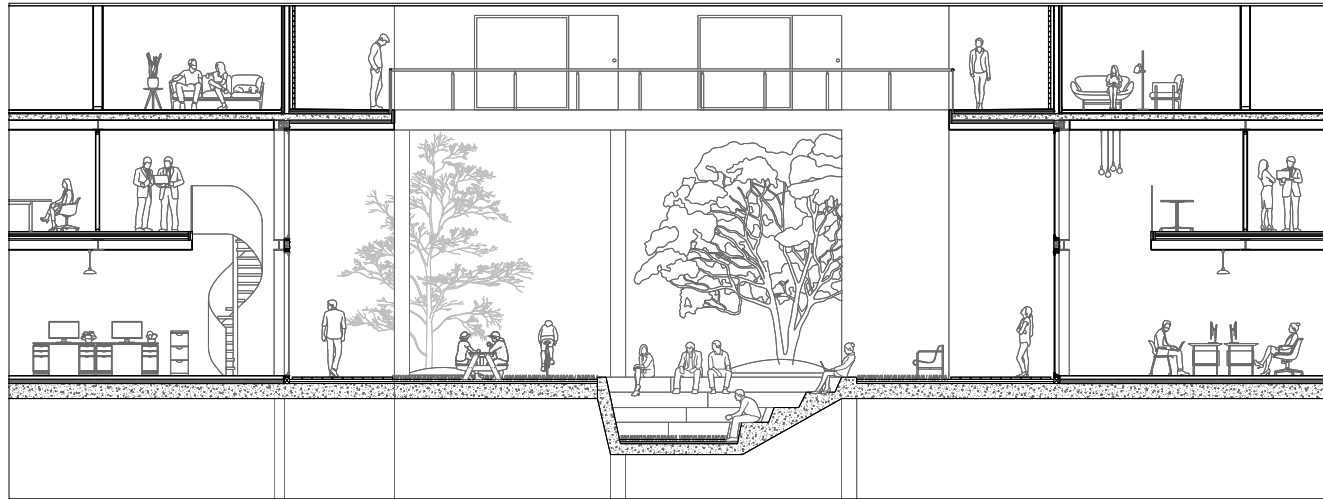


Elevation towards park

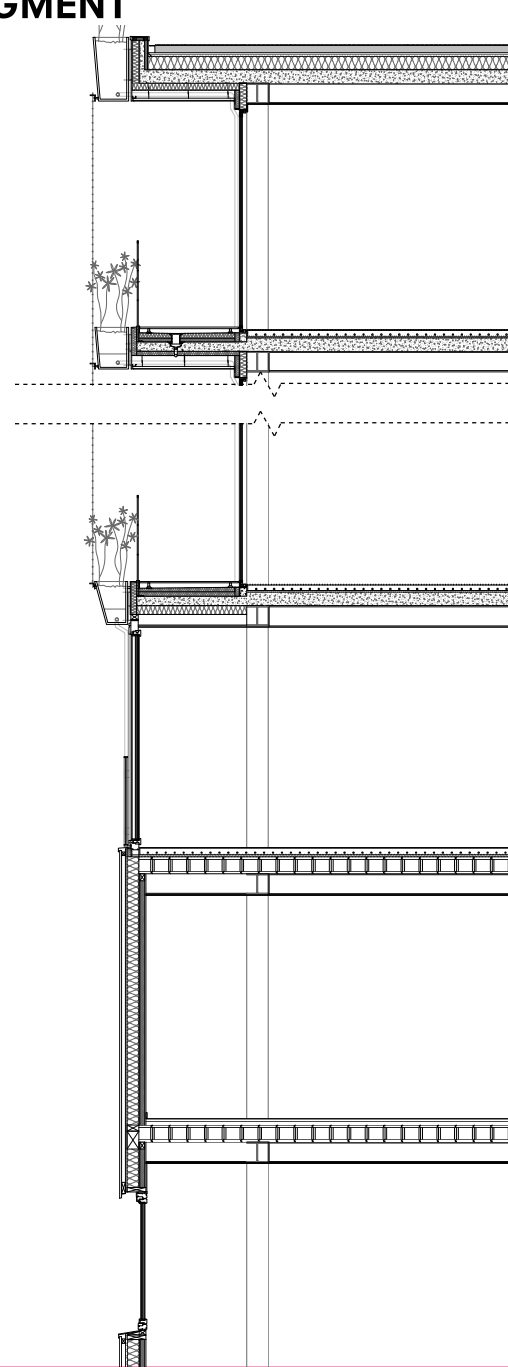
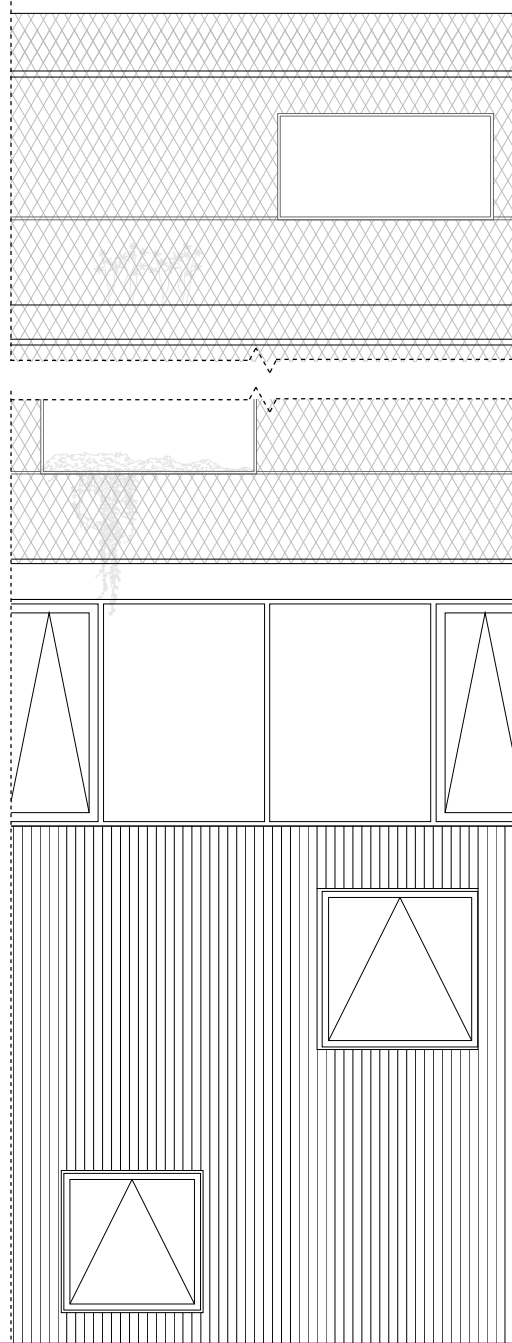
0 1 5 10m

materialization

# 1:50 COURTYARD DETAIL

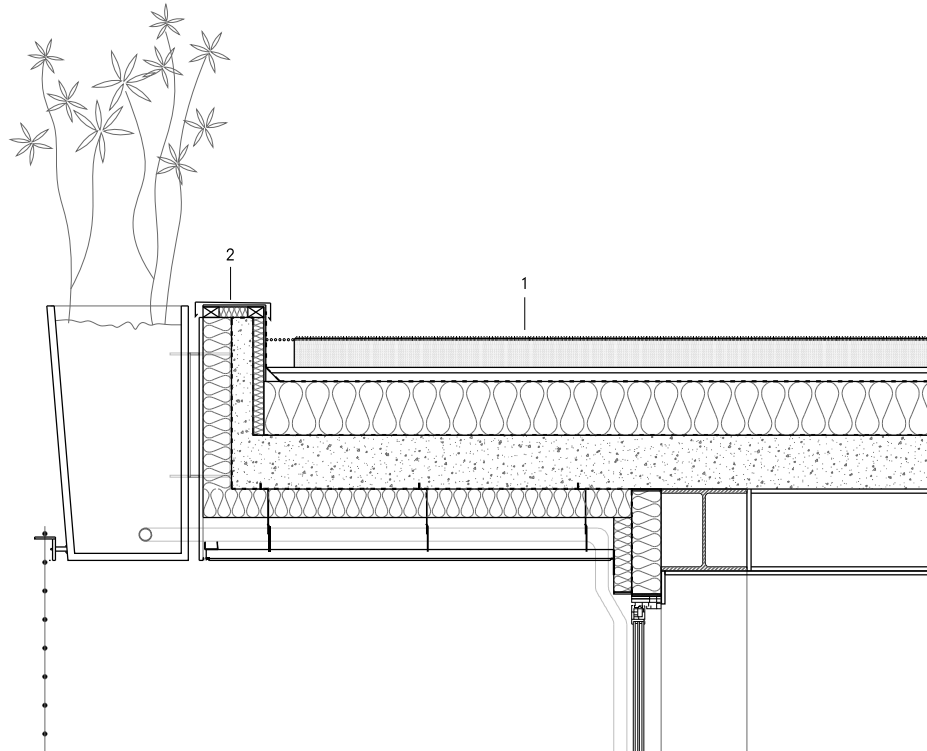


# 1:20 ENVELOPE FRAGMENT



## 1:5 DETAIL

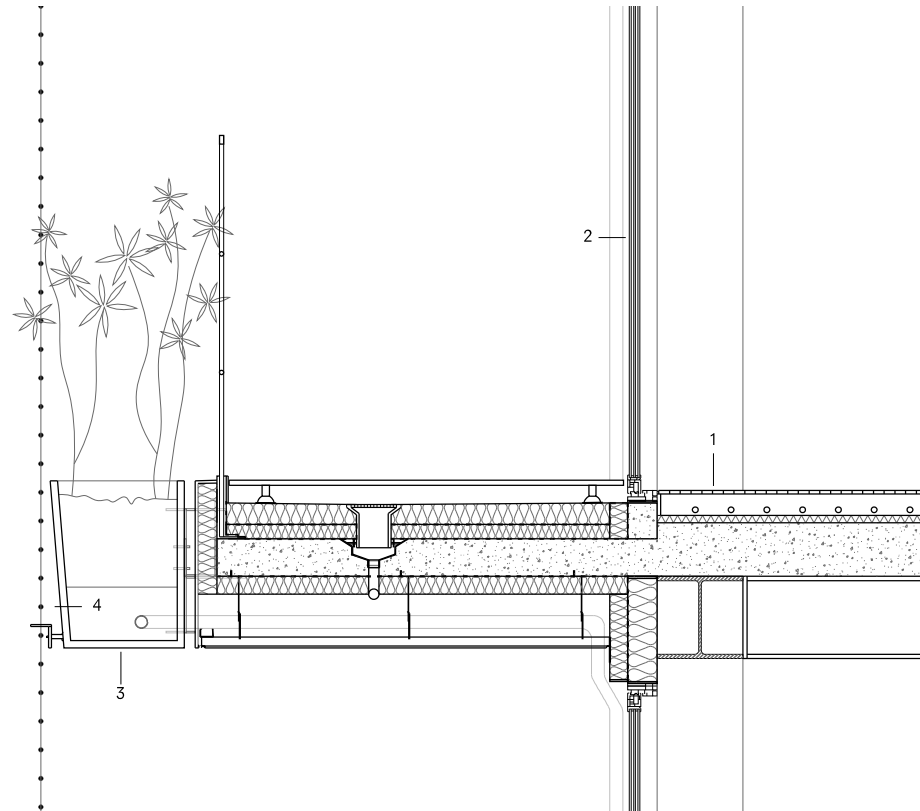
1. Roof construction
  - 100 mm extensive green roof
  - 15 mm filter fleece
  - 25 mm drainage layer
  - sealant layer
  - rigid foam thermal insulation
  - vapour barrier
  - concrete ceiling slab
2. steel parapet covering



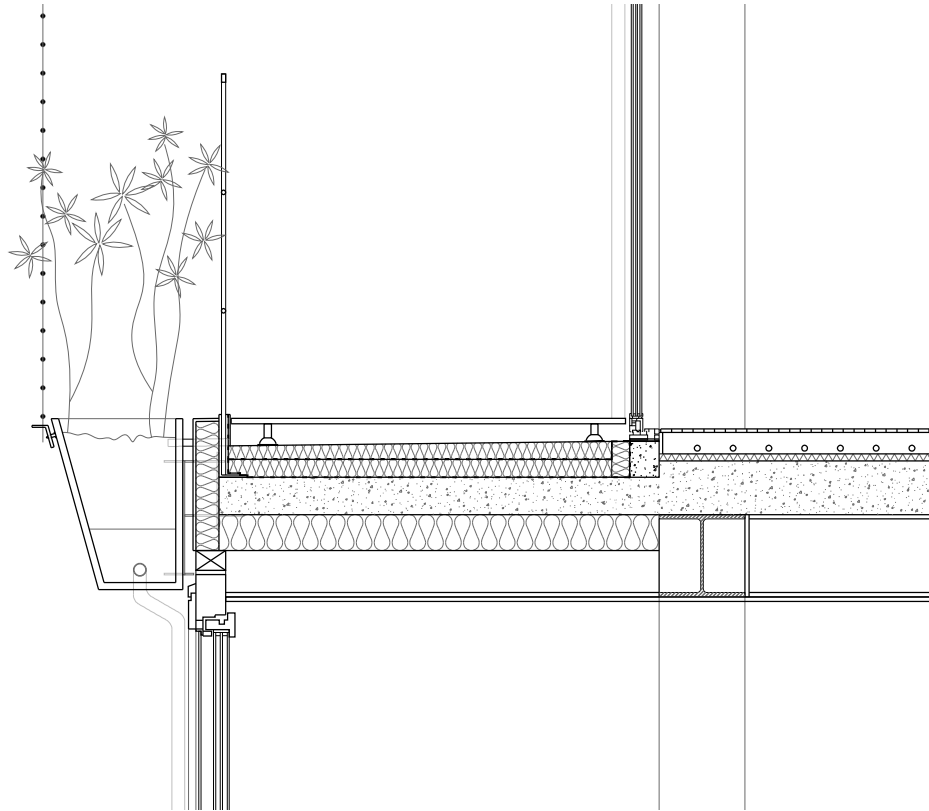


## 1:5 DETAIL

1. Balcony construction
  - heart pine floor boards
  - plastic raised floor support
  - XPS thermal insulation
  - sealant layer
  - PIR thermal insulation
  - vapour barrier
  - concrete ceiling slab
2. Balcony sliding door: tripple glazing
3. Aluminium sheed metal plant box
4. Dainage layer

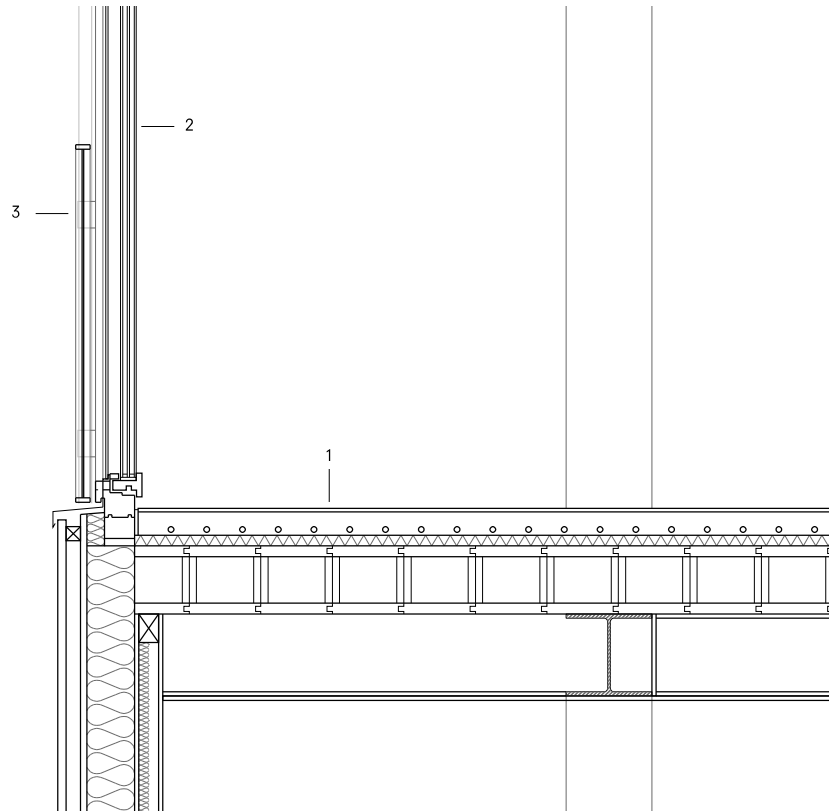


# 1:5 DETAIL



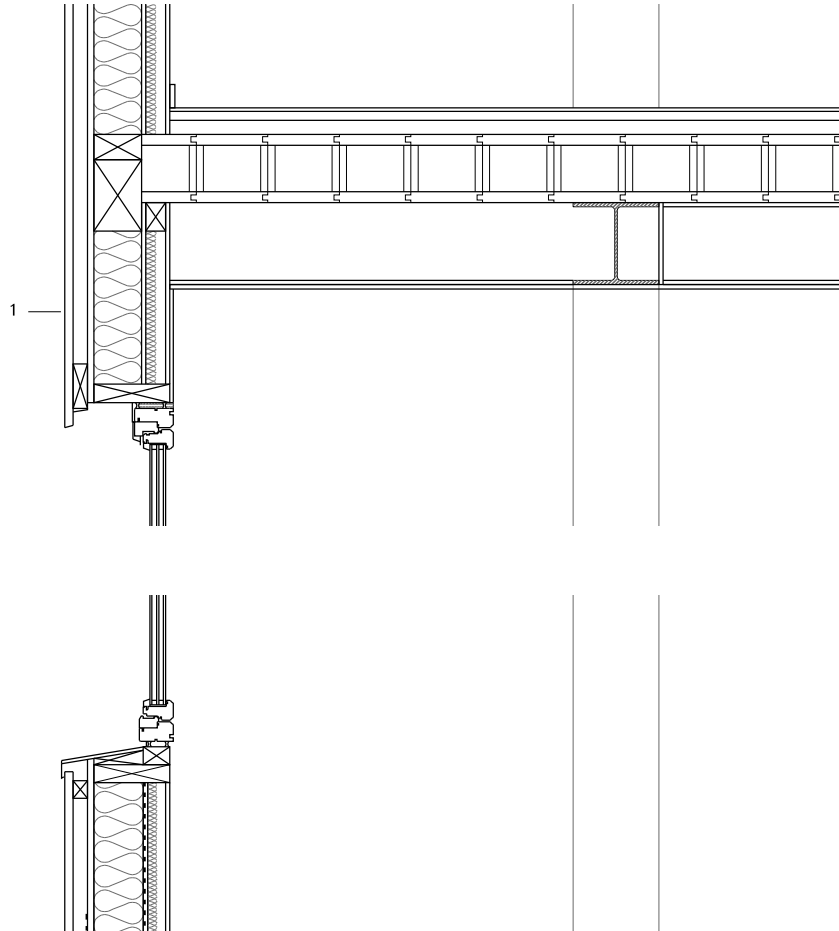
## 1:5 DETAIL

1. Floor construction
  - floor covering parquet flooring
  - dry top floor with underfloor heating
  - impact sound insulation
  - timber box element floor
  - steel beams
2. Balcony door: triple glazing
3. Balcony balustrade



## 1:5 DETAIL

1. Wall construction
  - wood cladding panel
  - battens, ventilated cavity
  - rock-wool insulation
  - soft-board (airtight membrane)
  - thermal insulation, frame
  - vapour check
  - sound insulation
  - battens (space for services)
  - wood-cement particleboard





materialization

## AXONOMETRIC VIEW

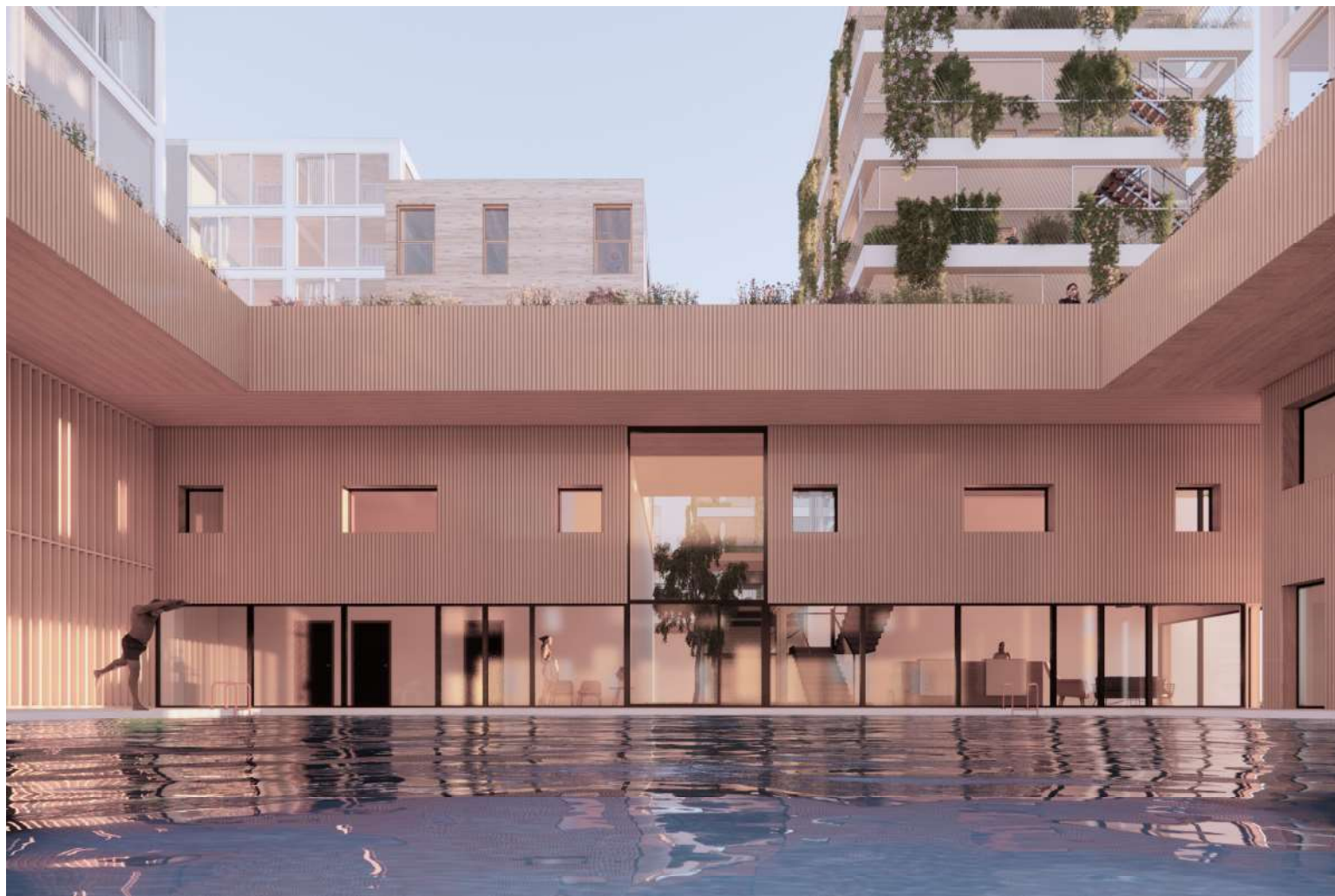




**PERSPECTIVE: VIEW TO THE EAST FACADE**



## GROUND FLOOR - VIEW TO THE COURTYARD





## GROUND FLOOR - VIEW TO THE COURTYARD



## GROUND FLOOR - VIEW TO THE COURTYARD





**PERSPECTIVE: VIEW TO THE CENTRAL SPINE**



## GROUND FLOOR - ENTRANCE TO THE CORE

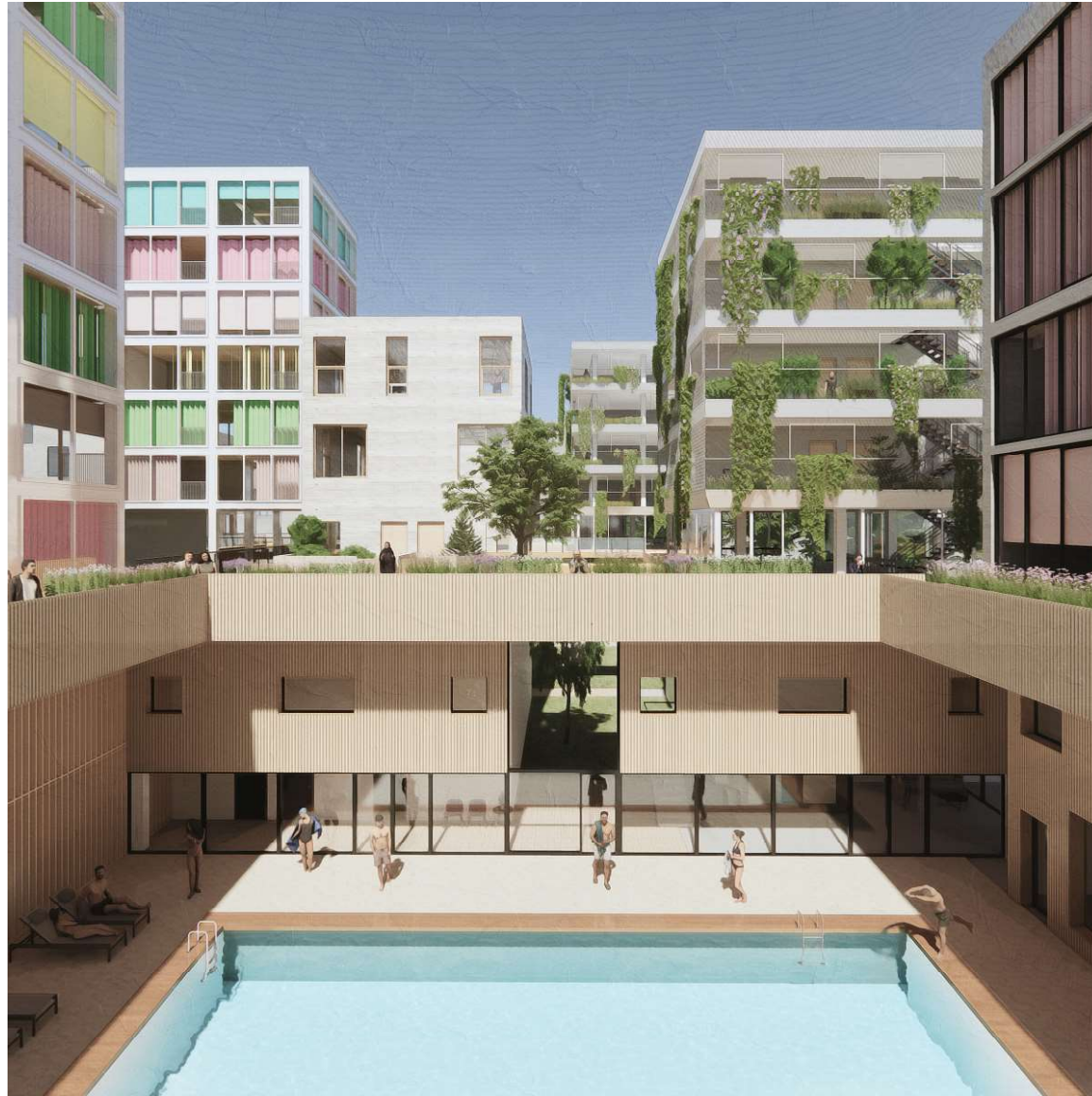




## LEVEL 2 - PERSPECTIVE TO THE PLATFORM



## LEVEL 2 - PERSPECTIVE FROM PLATFORM





## LEVEL 2 - PERSPECTIVE TO THE GARDEN





## LEVEL 2 - PERSPECTIVE TO THE BALCONY





