

Urban Voids & Other Hidden Resources

Recycling the Infrastructural Networks of Bogotá

Research

Urban Voids

Railroad

Invisibles

Design Intentions

Recycling insfratructures

Site: Estacion Sabana

Design Strategy

Infrastructural urbanism

Field conditionns Sabana

Design Configuration

Fieldstrategy system

Masterplan Sabana

Sampling & Selective Design

Moduli 225

Factory Nave

Landscaping Elements

3 Samples

Results & Reflection

Urban Voids as a Resource

Visible and Invisible Perspectives







Bogotá | Density & Congestion

What hidden resources do the urban voids of Bogotá hold and how can these potential resources be activated?



Railroad Void



Railroad Bogotá



Sabana Station



Void is not Empty

Naming something a void contributes to creating the void, the terminology used is not descriptive but constitutive. When a plot is named wasteland, vacant, vacuum or dead it is essentially marked as a potential site for development – diminishing and denying all that was already there.

- Doron



Can a balance between visible and invisible communities be restored by introducing a common network?

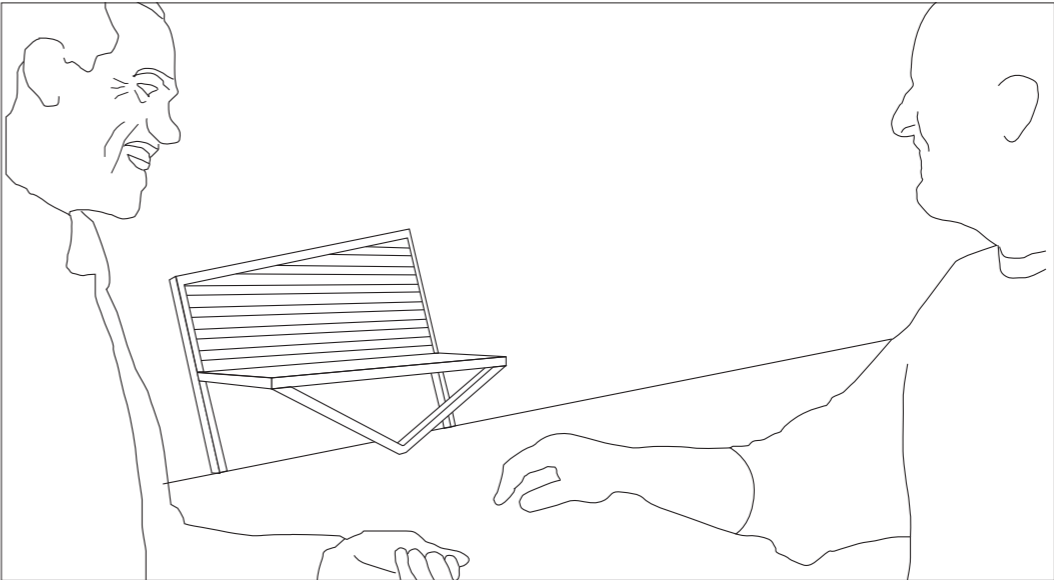
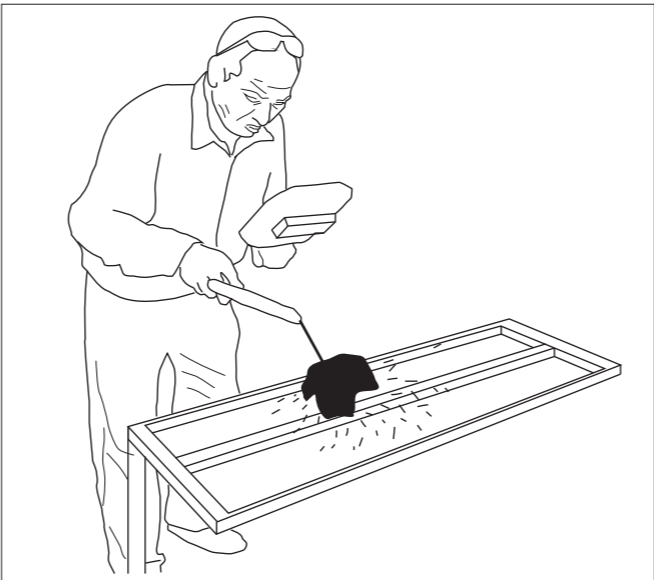
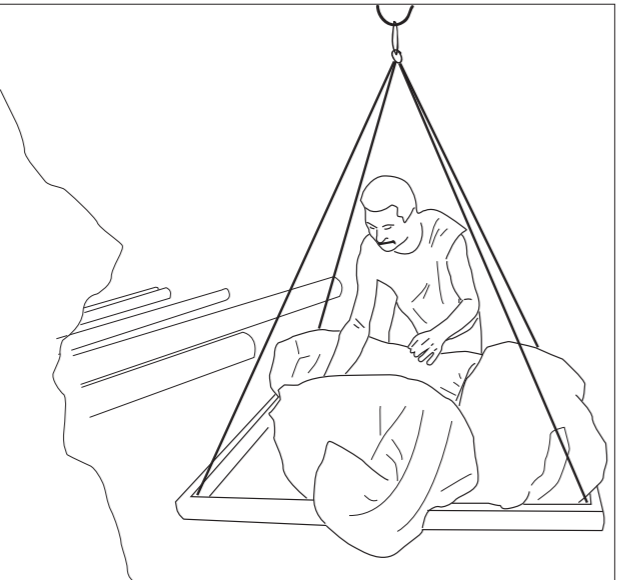
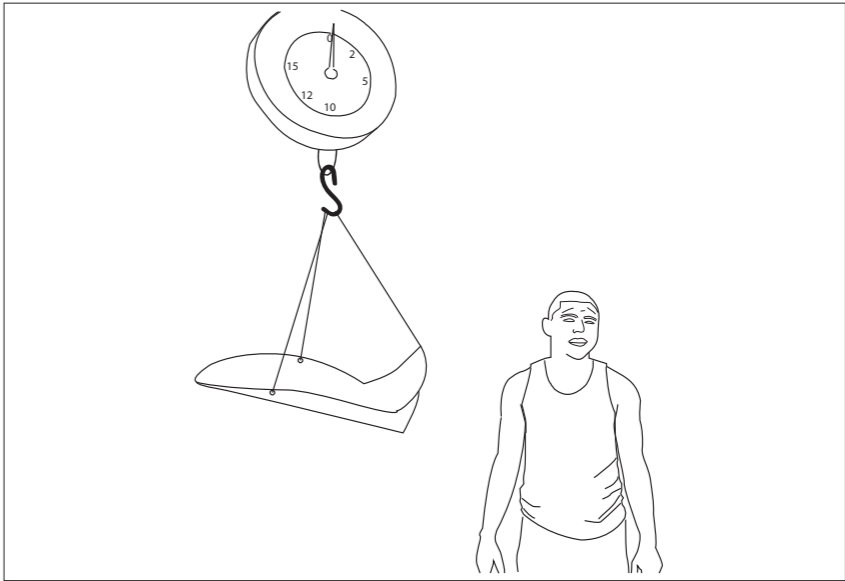
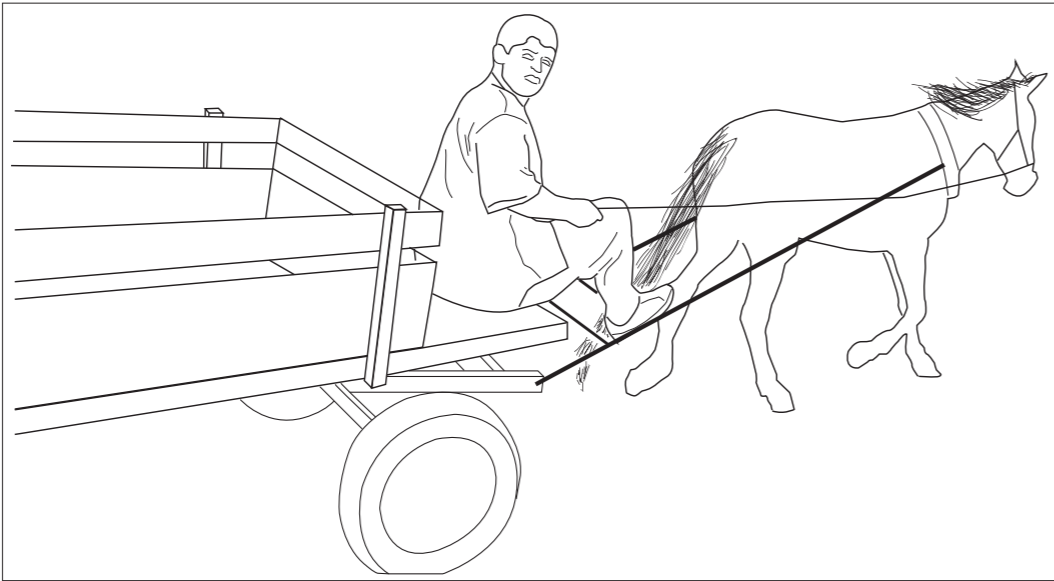


Invisibles of the Railroad

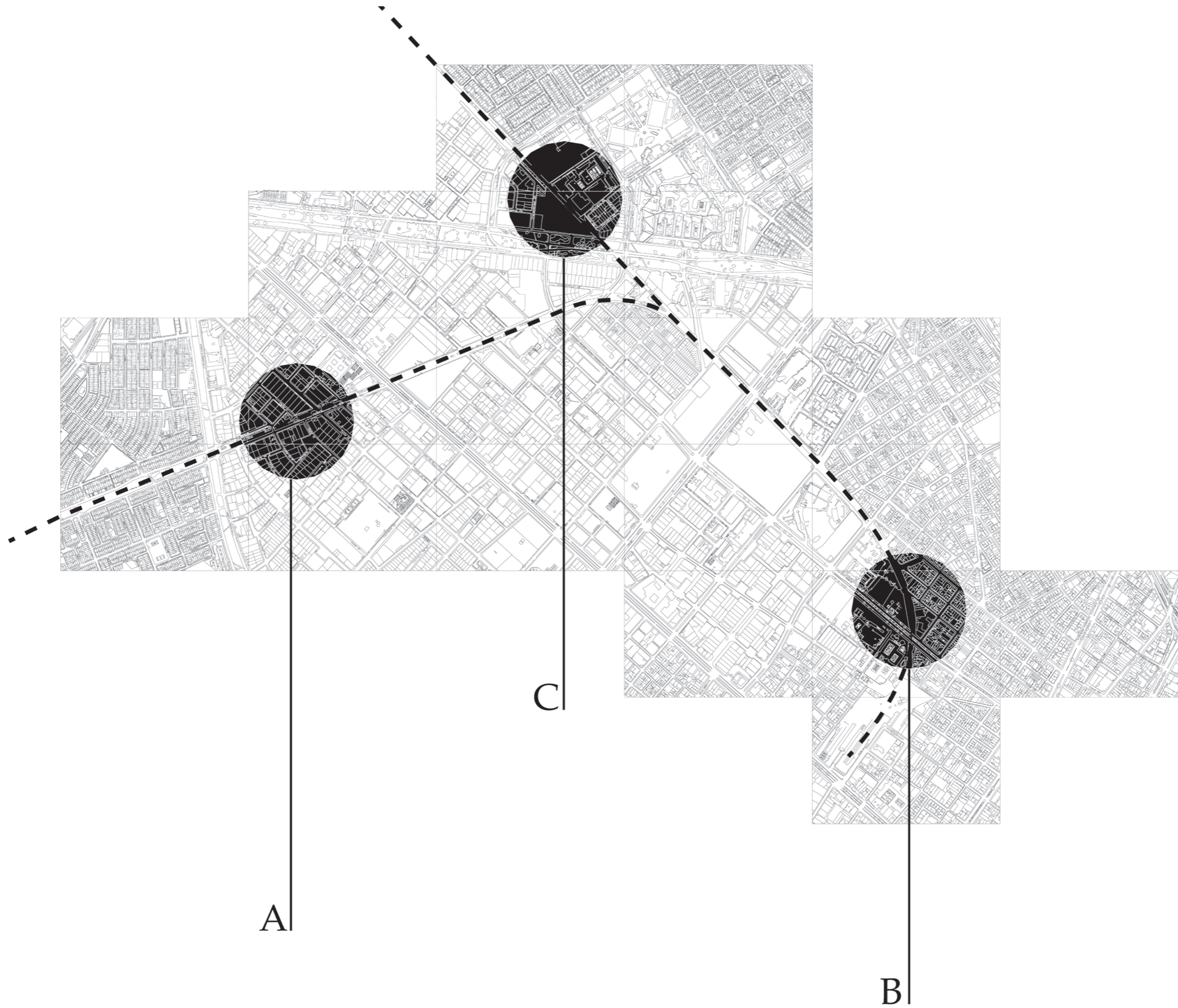


Invisible Process of Recycling

Wasteland



Invisible-to-Visible







Recycling Infrastructures

Combining Invisible and Visible Perspectives



How can we make our cities
more socially inclusive?

How can we improve
mobility and security?

How can we ensure a happier life
for all of our citizens?

- Enrique Peñalosa, Mayor of Bogotá





Sabana & the City



Sabana Station

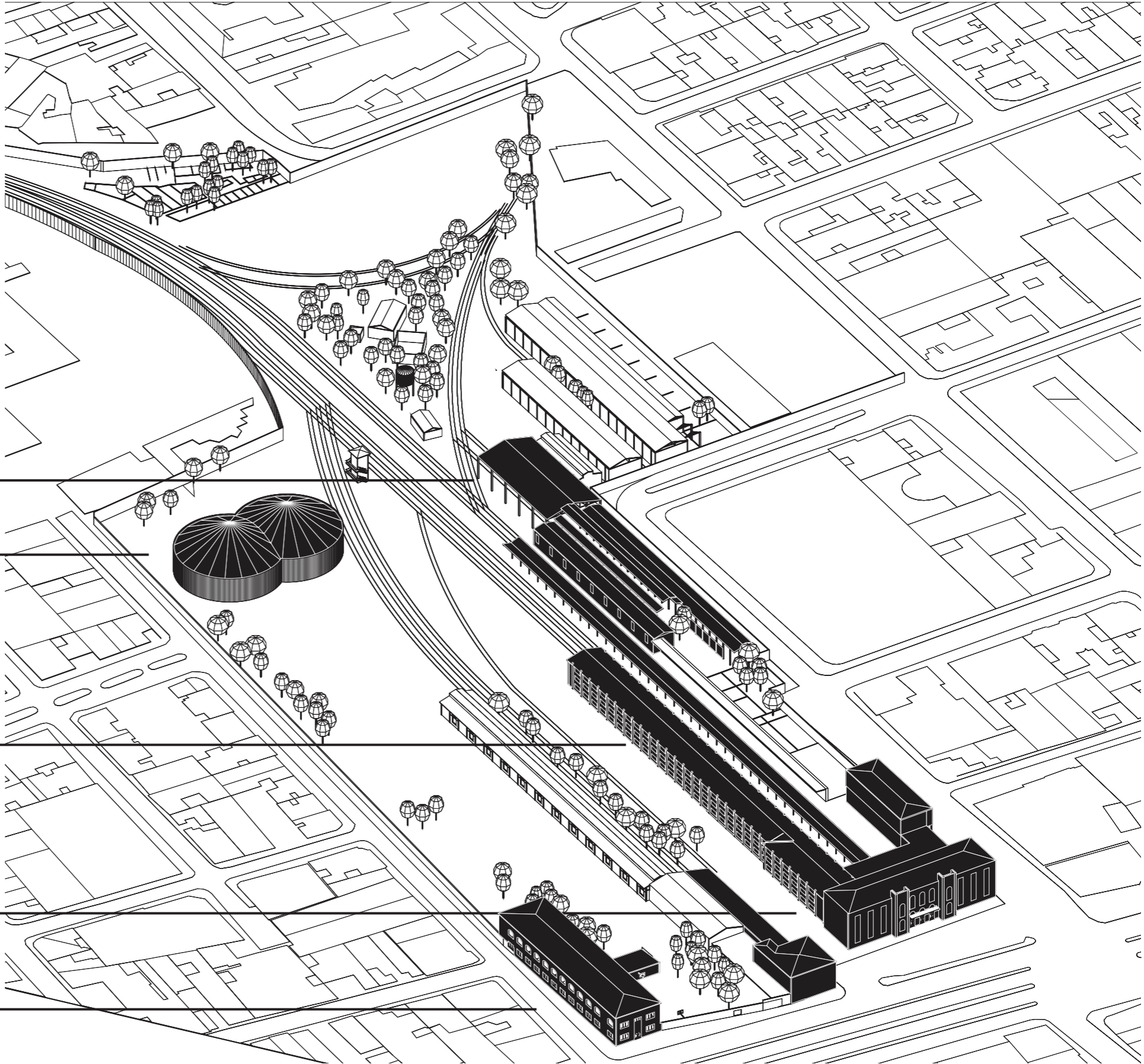
Train Workshop

Circus School

Traffic Police

Trainstation

Crafts School





Sabana Station | Void or Oasis?



Sabana Station | Los Mártires

Recycling Infrastructures

A Fieldstrategy Approach



“Infrastructural works not so much to propose specific buildings on given sites, but to construct the site itself. Infrastructure prepares the ground for future building and creates the condition for future event... Recognizing the collective nature of the city it allows for the participation of multiple actors. Infrastructures give direction to future work not by establishment of rules or codes (top-down) but by fixing points of service, access, and structure (bottom-up).”

- Stan Allen, Points + Lines

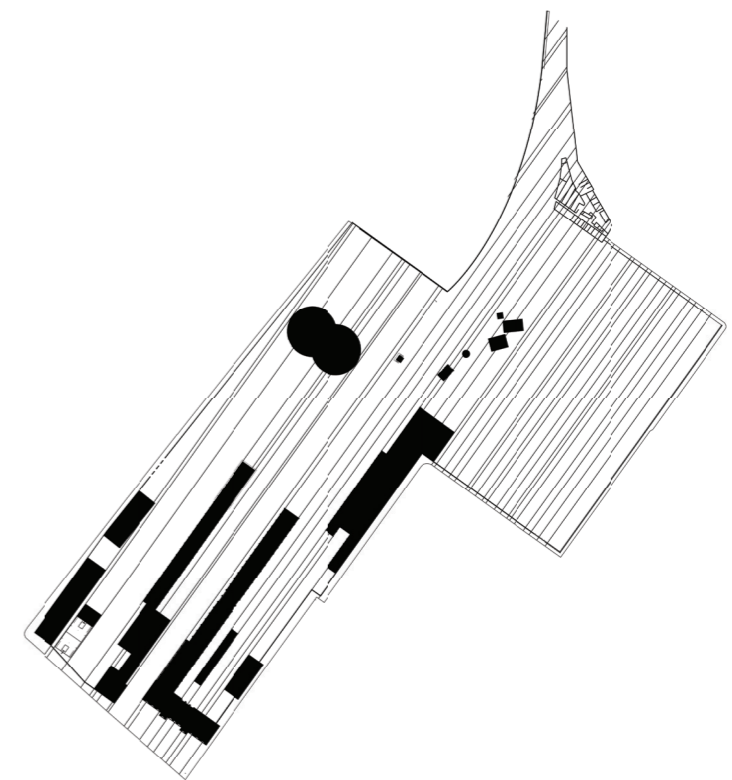




Obstructed Circulation

Void vs Built

Border Conditions

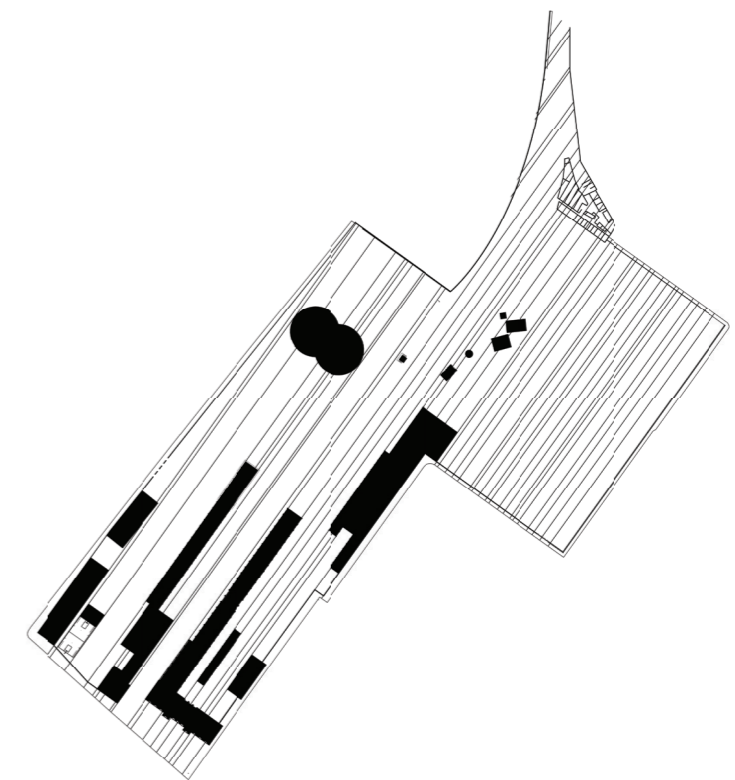




Obstructed Circulation

Void vs Built

Border Conditions

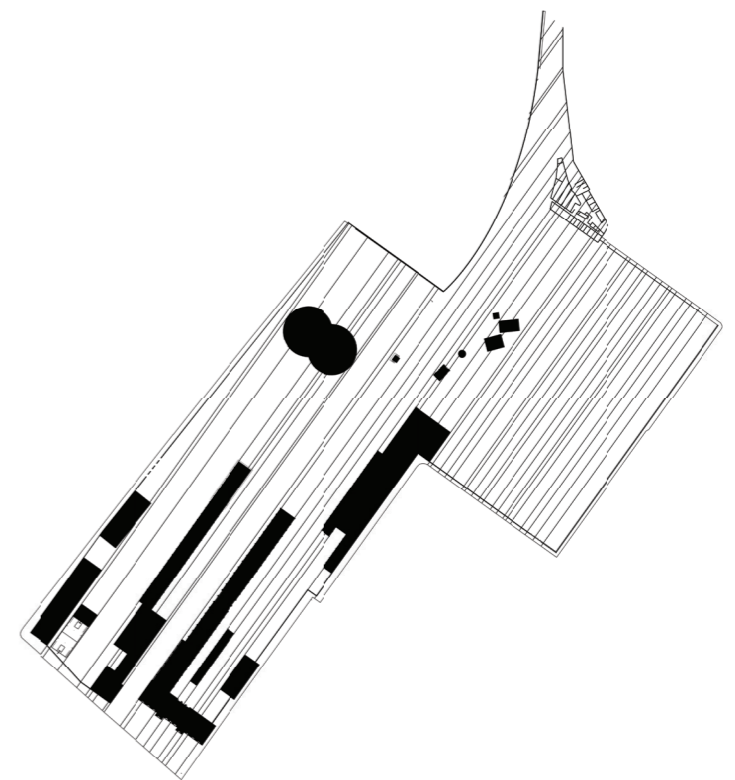


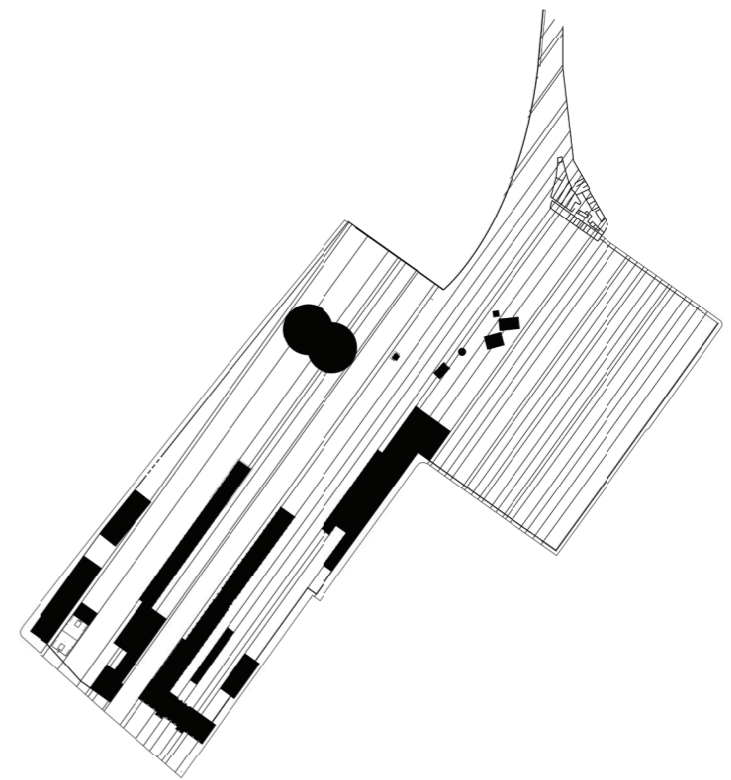
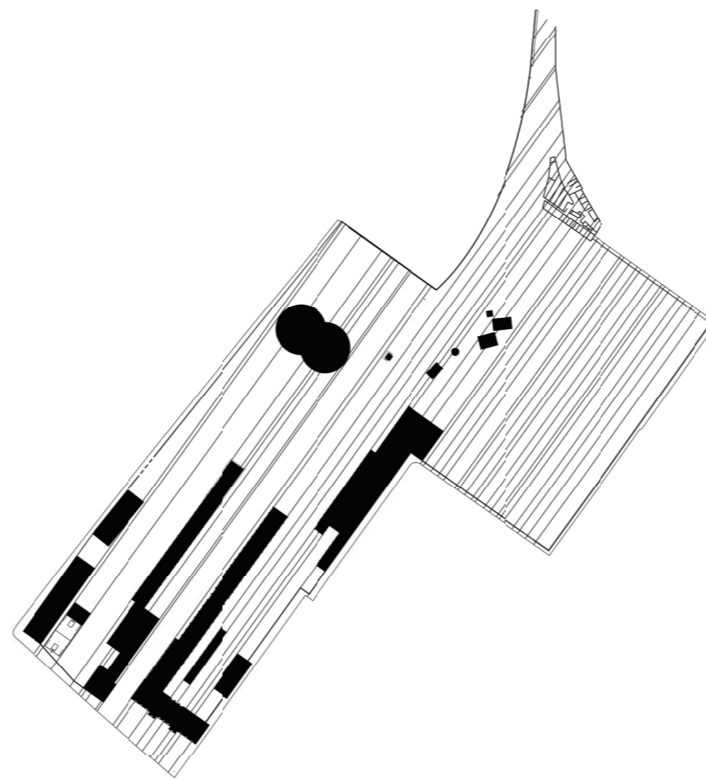
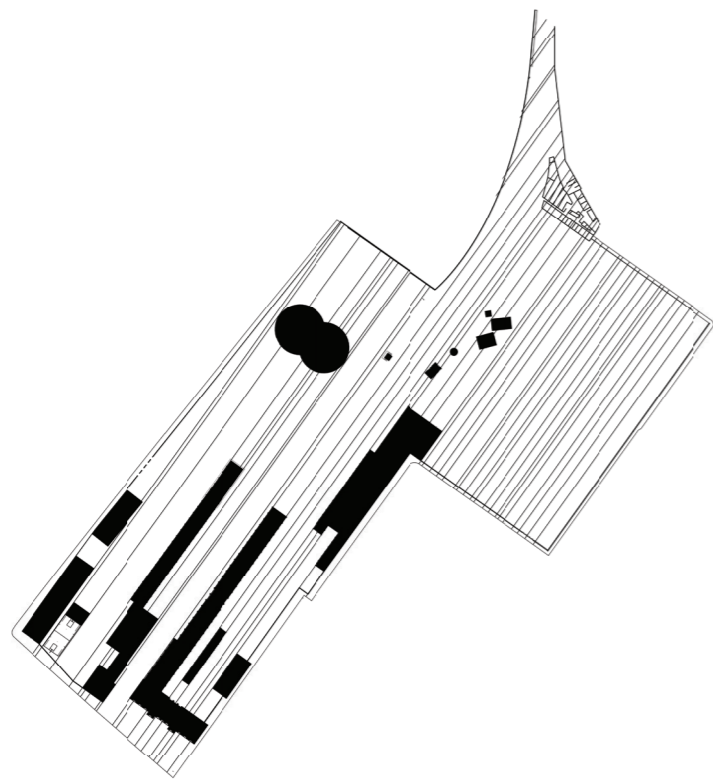


Obstructed Circulation

Void vs Built

Border Conditions

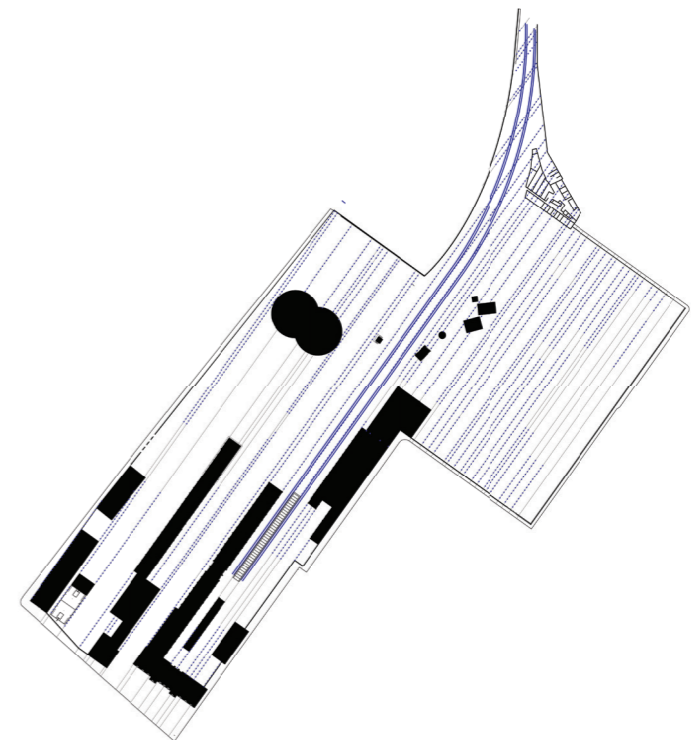




Public Space

Infrastructural Grid

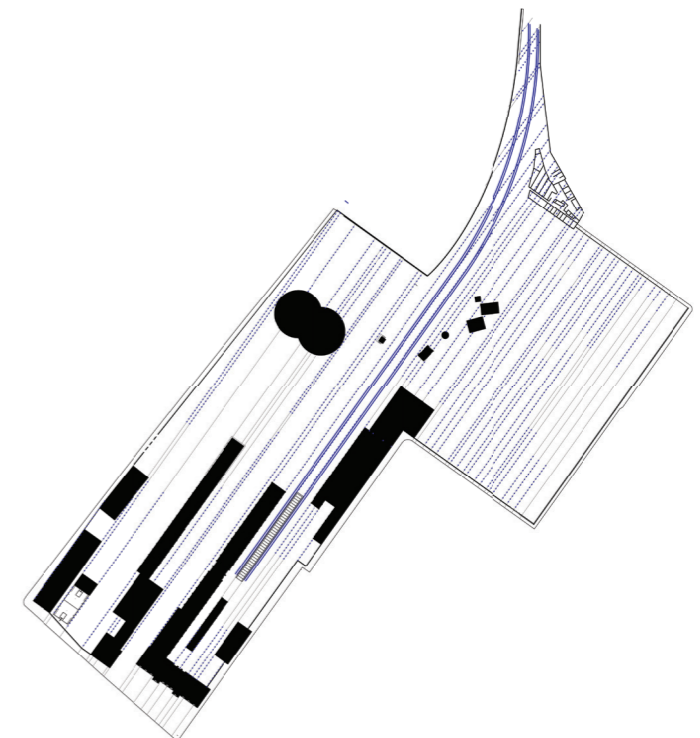
Modular System



Public Space

Infrastructural Grid

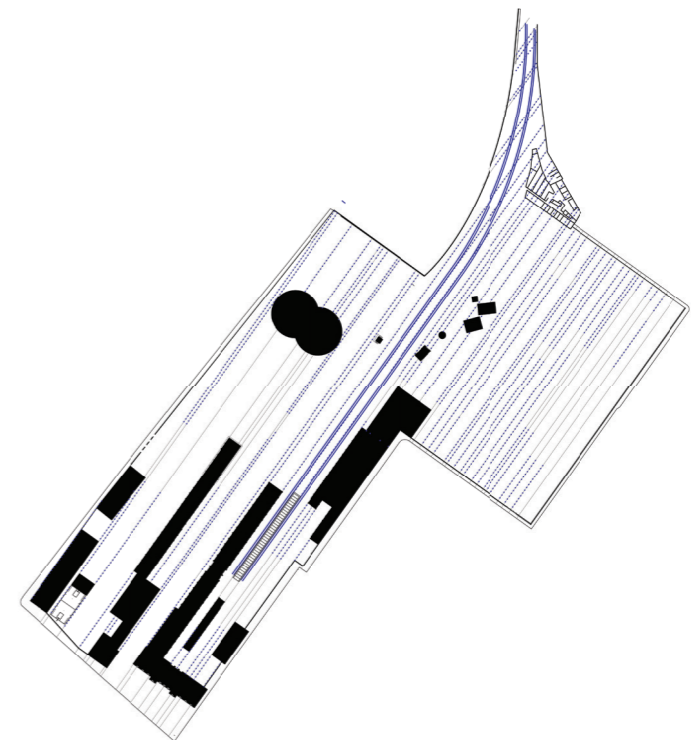
Modular System



Public Space

Infrastructural Grid

Modular System



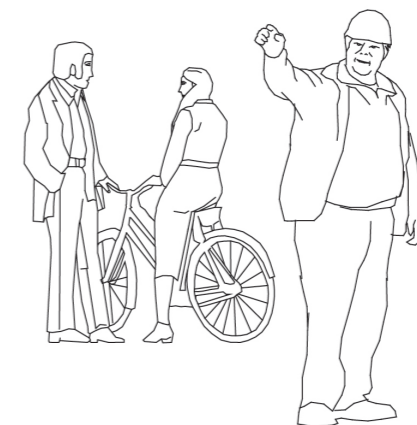
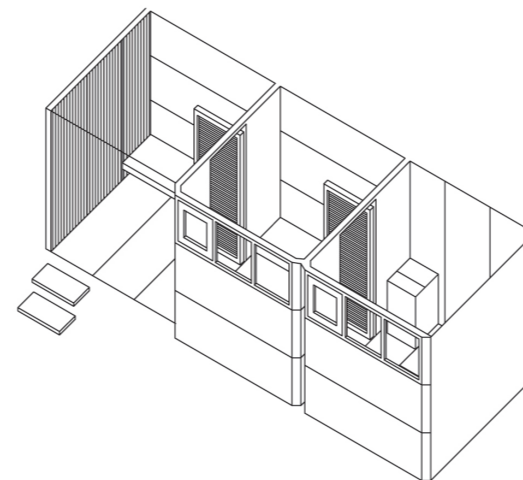
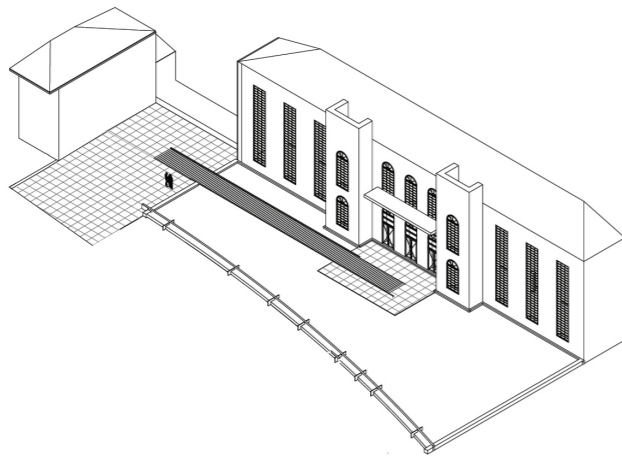
Hardware

+

Software

+

User



Field Intervention Strategy

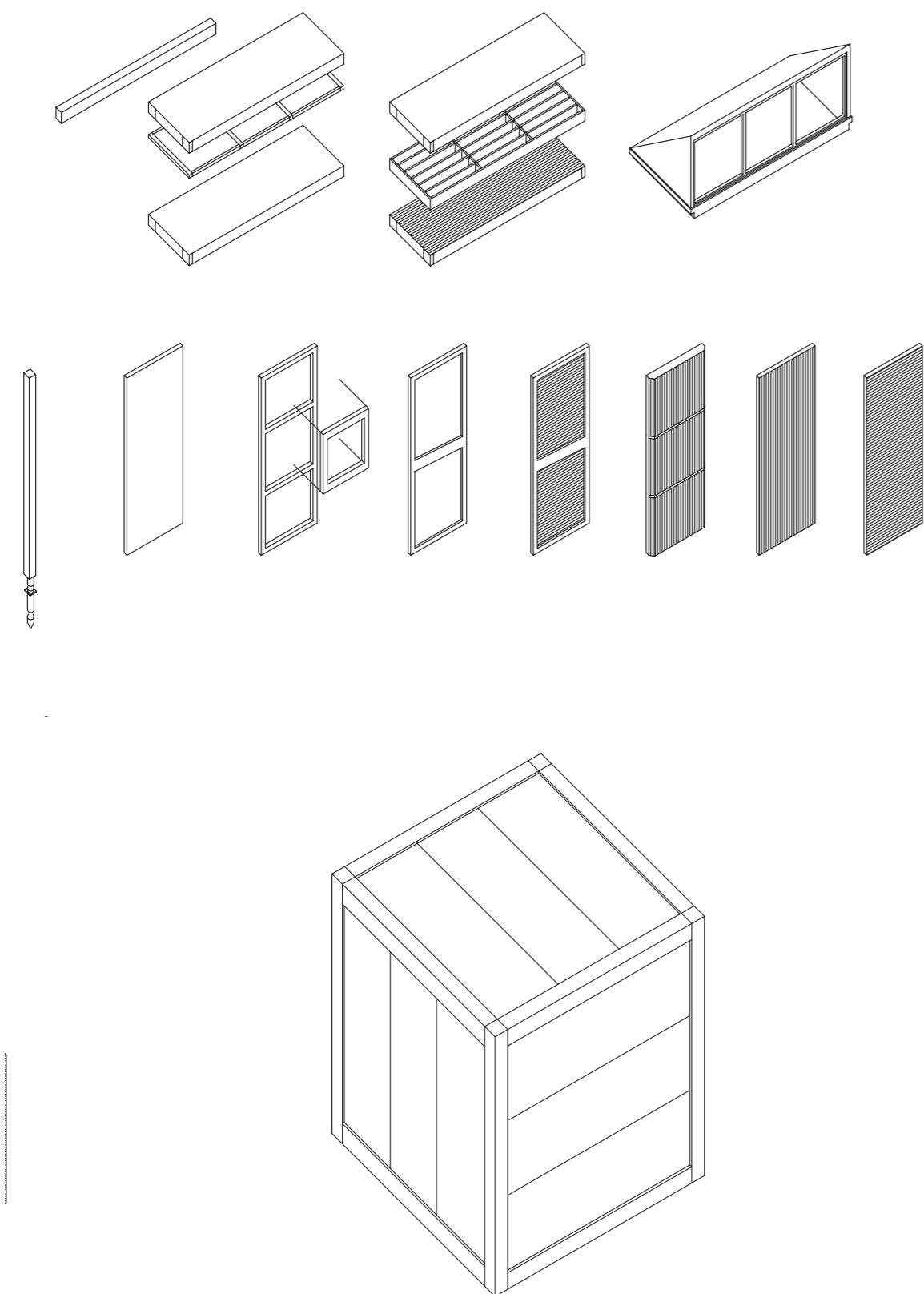
Sampling & Selective Design

A Second Scale Approach

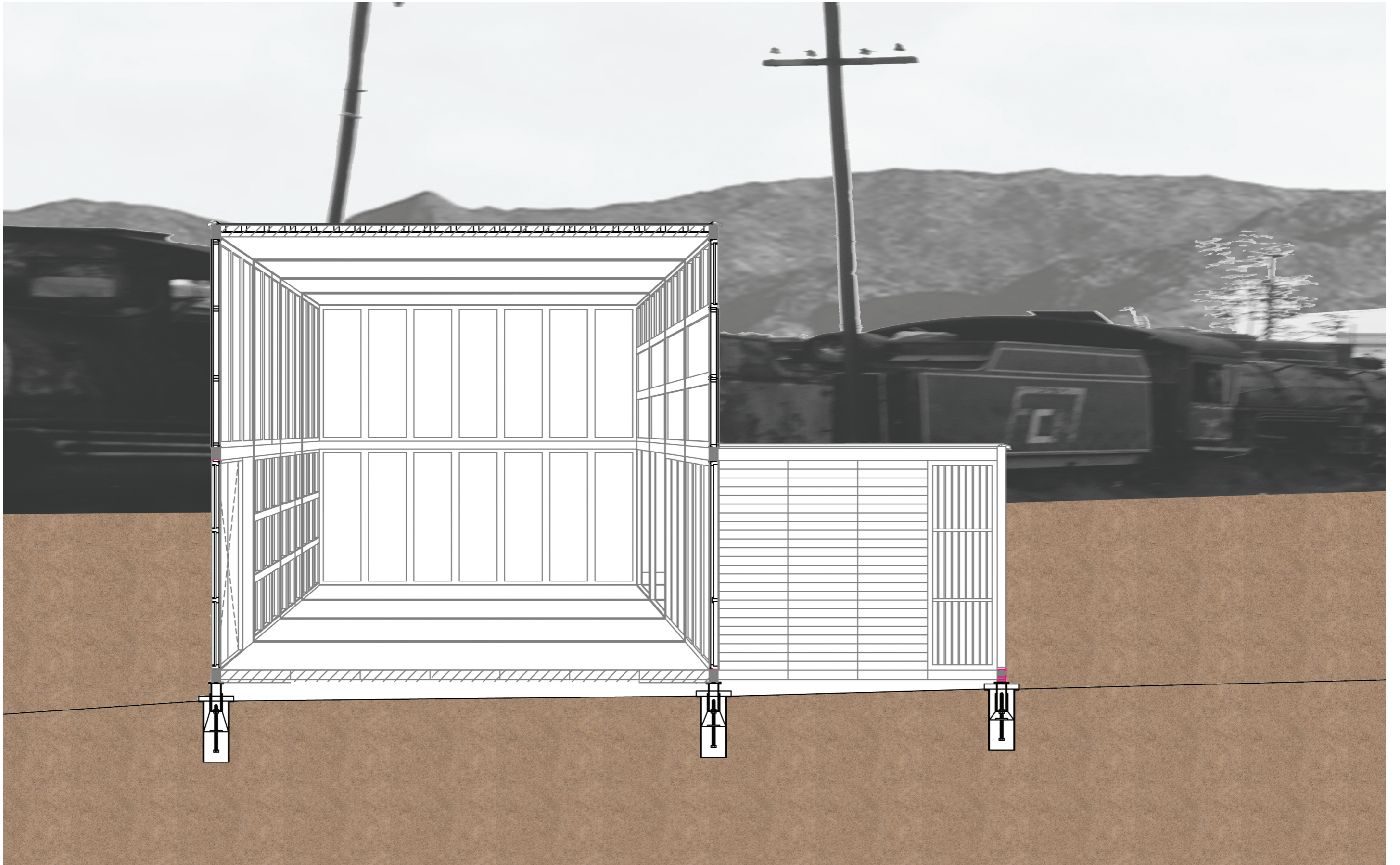


The idea of this open system is that it would enable adoption to changing conditions and demands, naturally and without compromise.





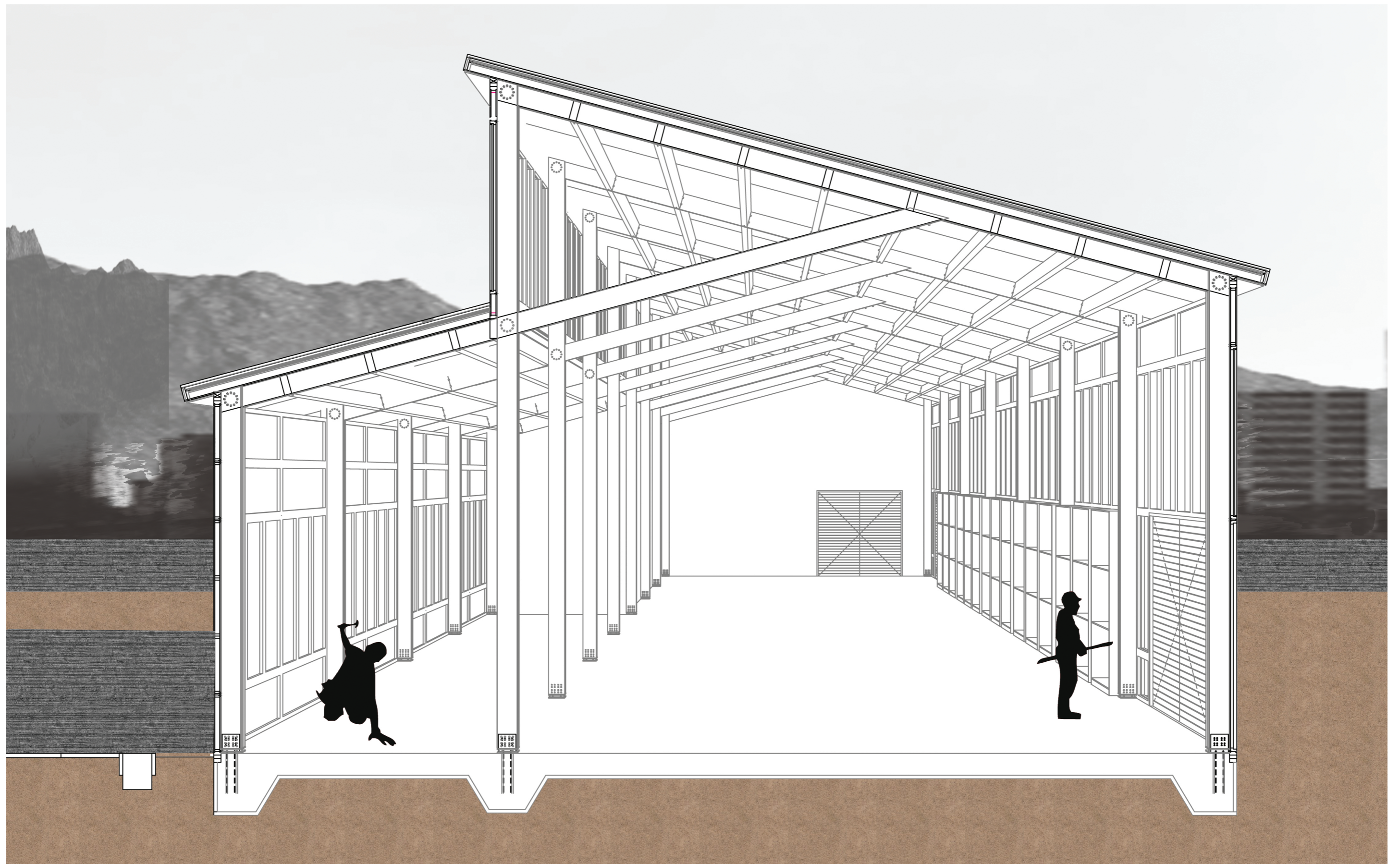
The Components







Backbone to the Modular System



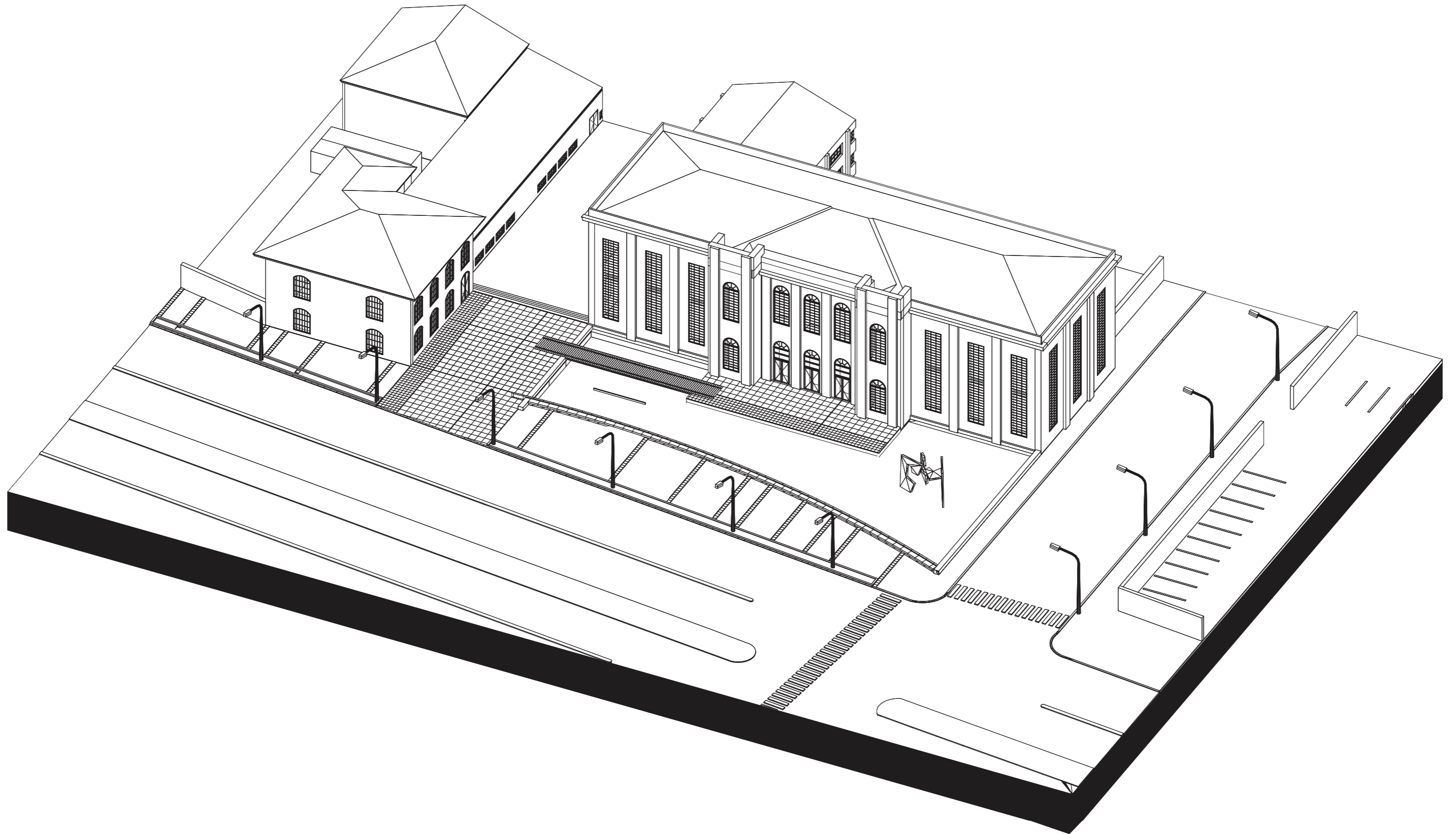
Architectural Form Nave



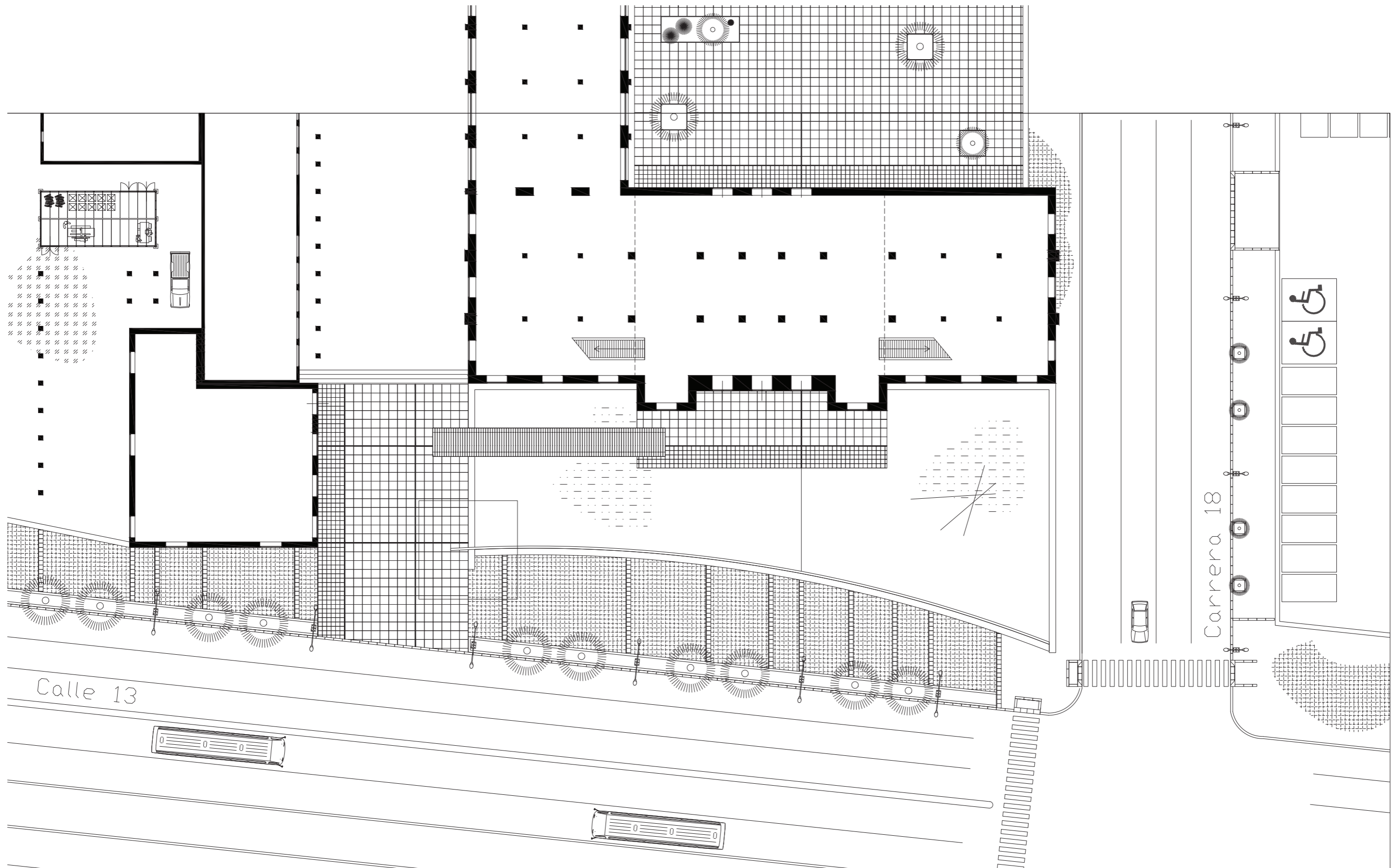


Facade





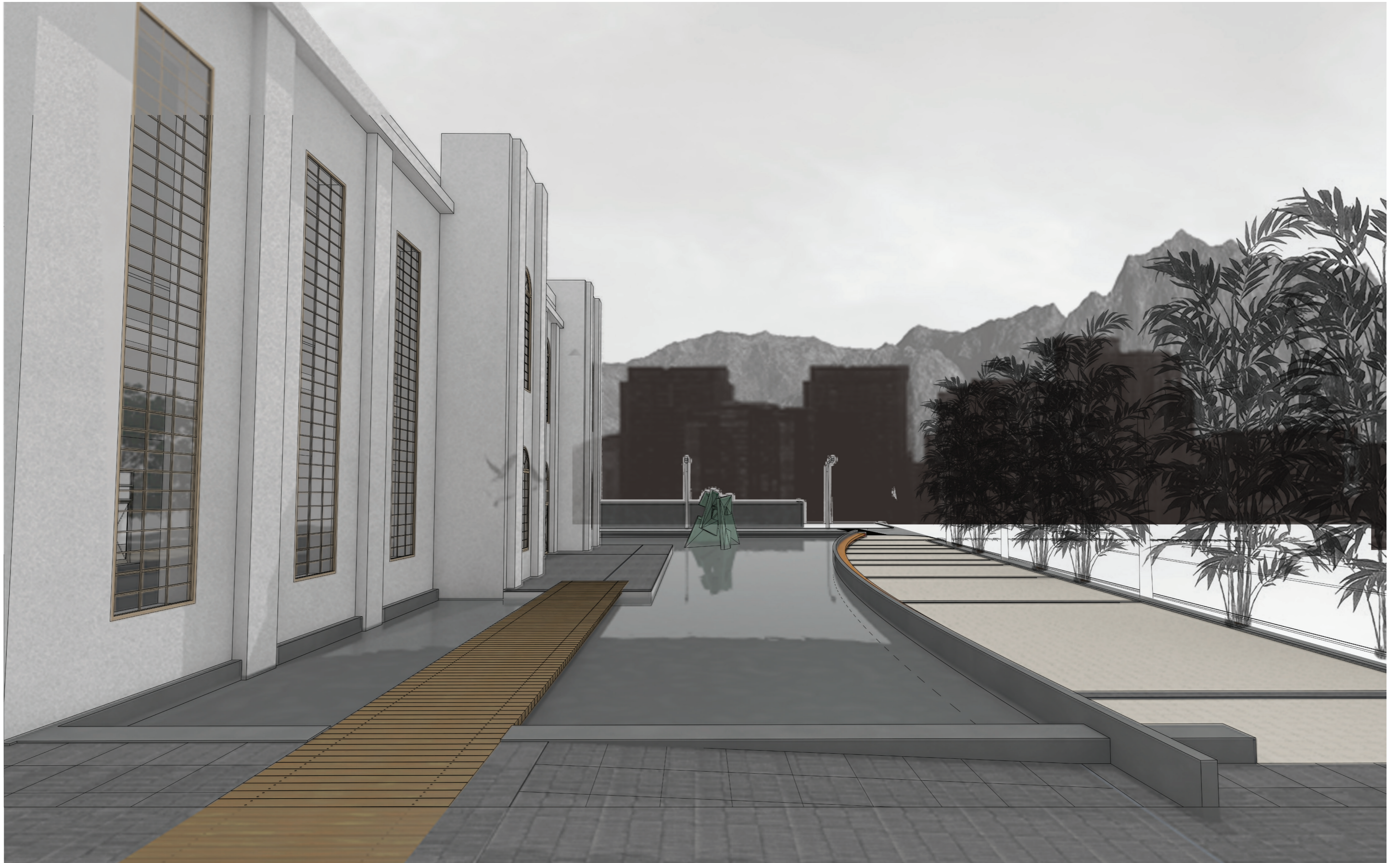
Sample 1



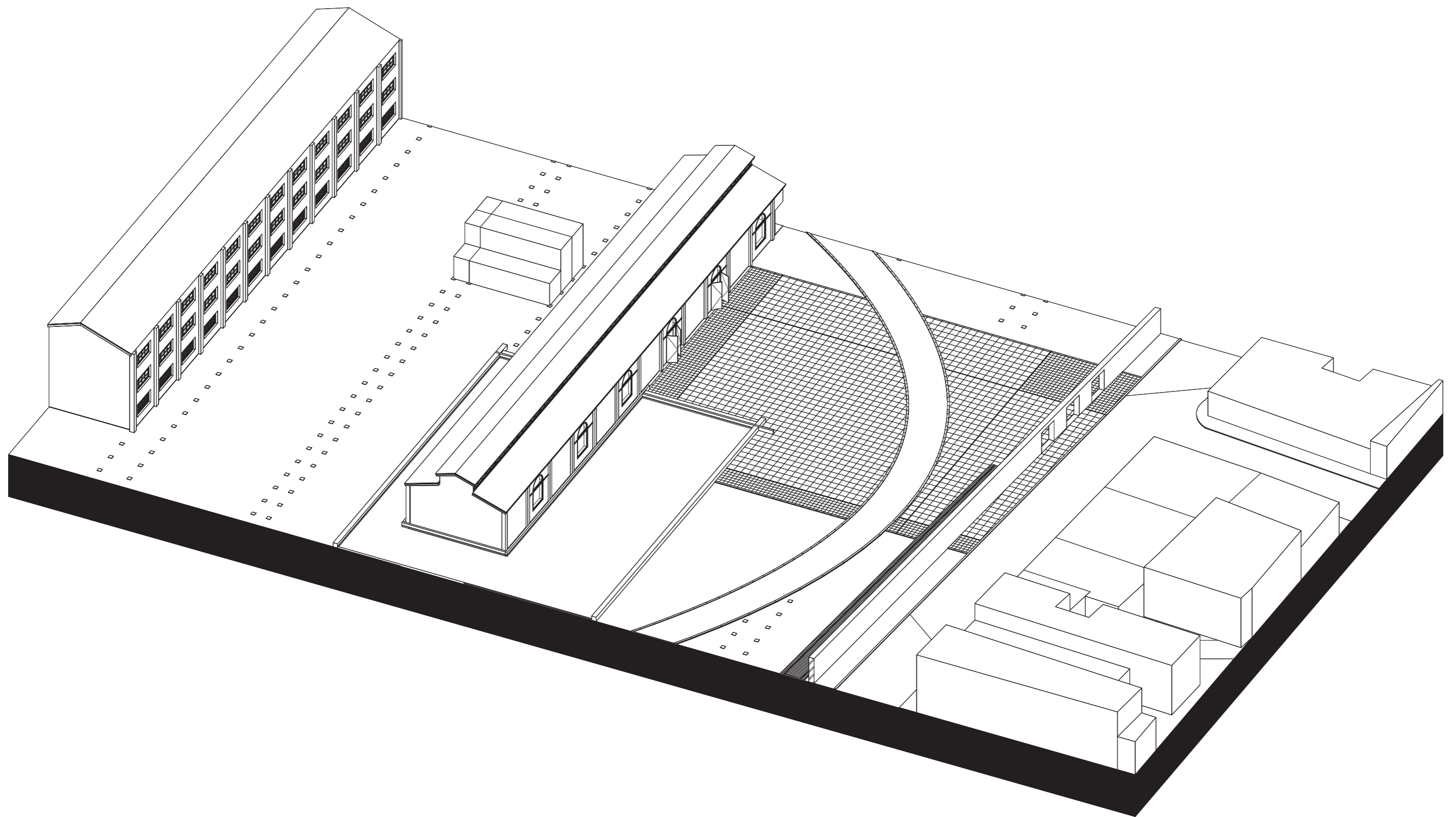
Sample 1



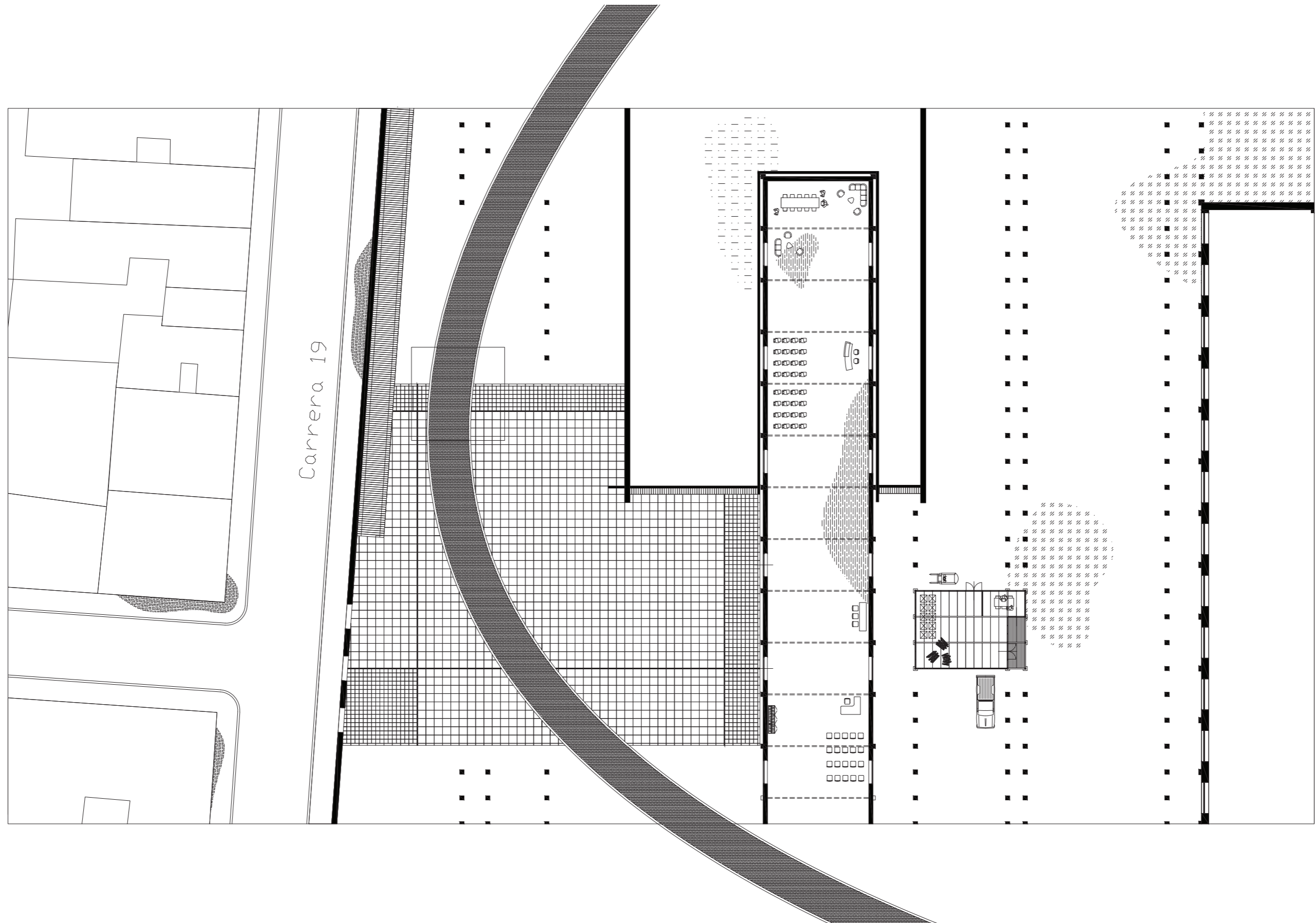
Sample 1



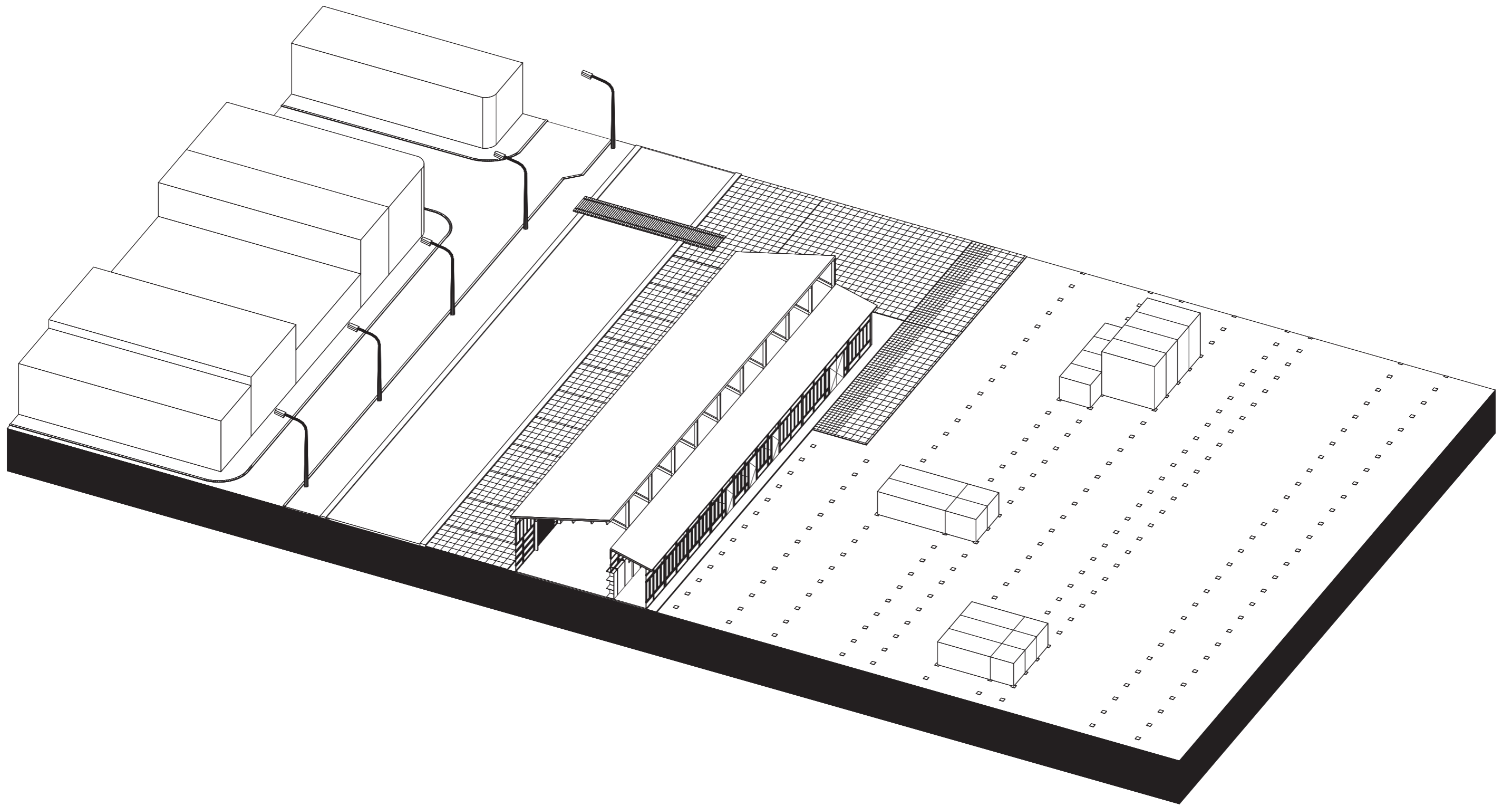
Sample 1



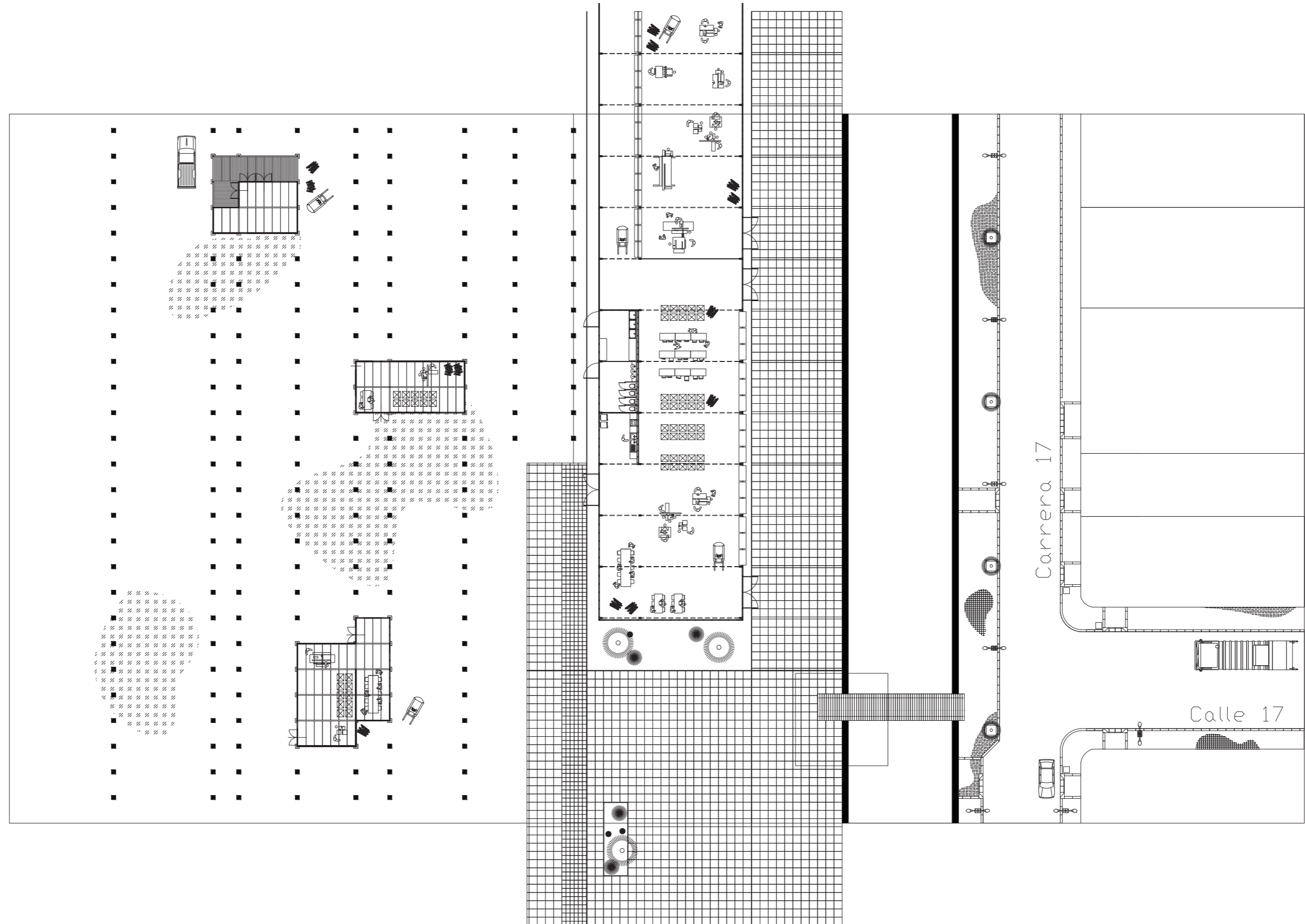
Sample 2



Sample 2



Sample 3



Sample 3



Sample 3





Results & Reflections





Relationship with Time

