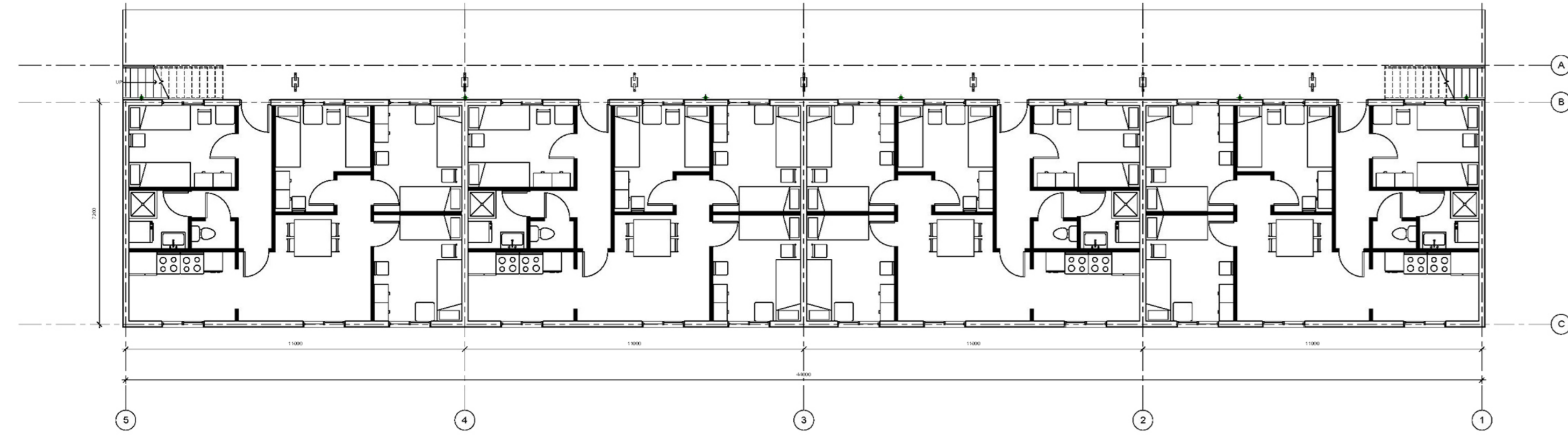


T-BOX COMMUNITY

VS the existing AZC

existing

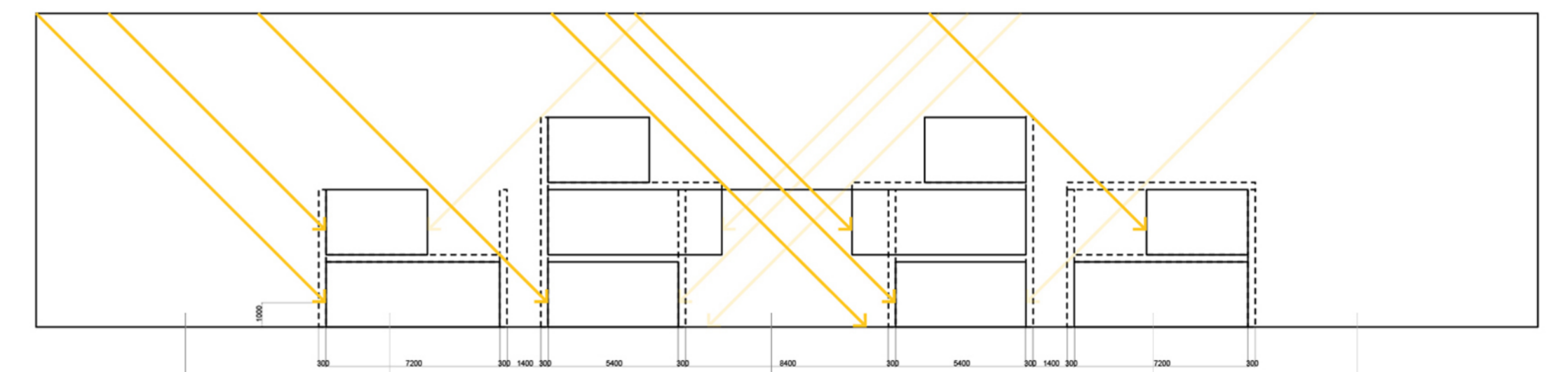
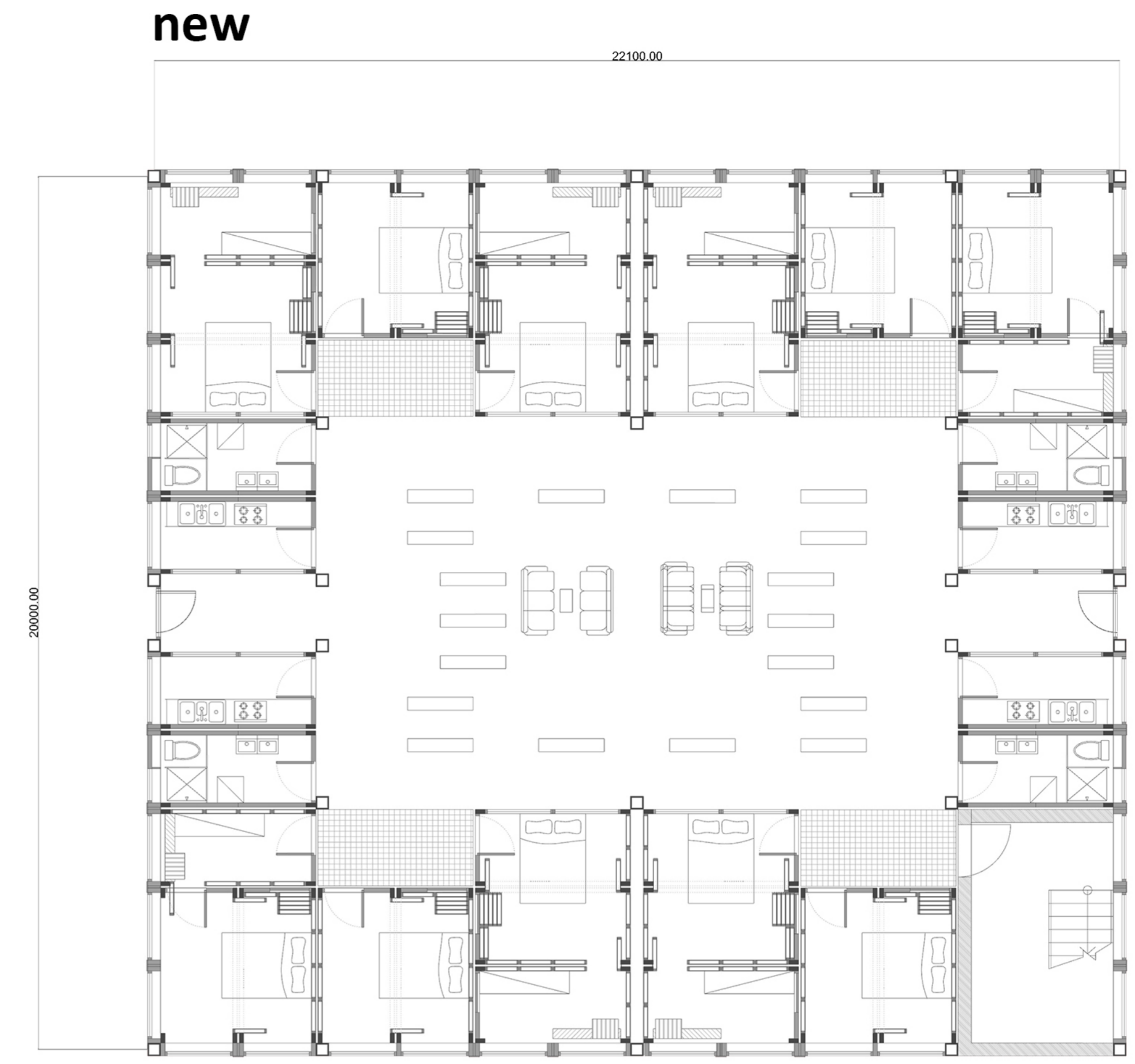
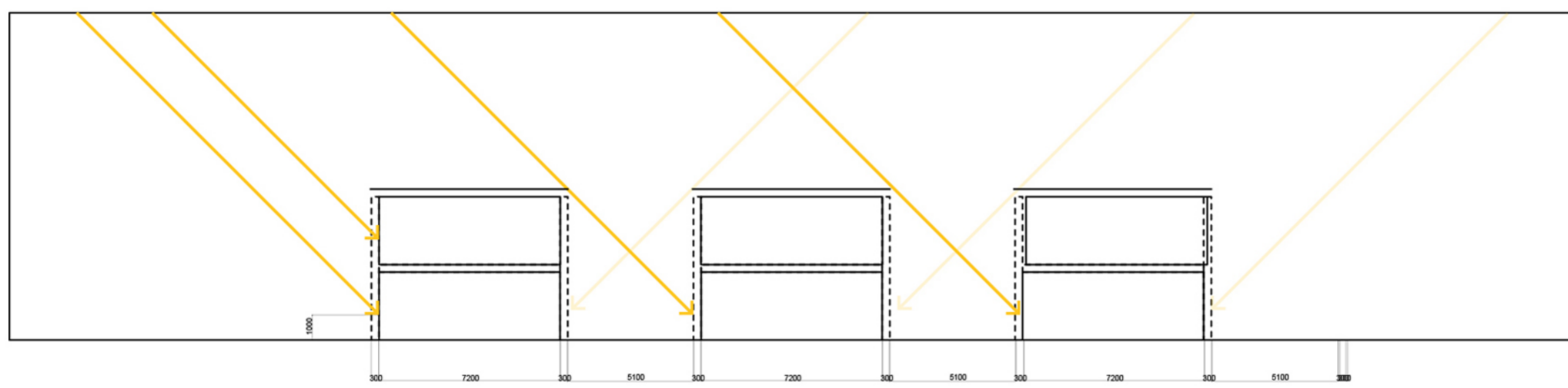
plan comparison



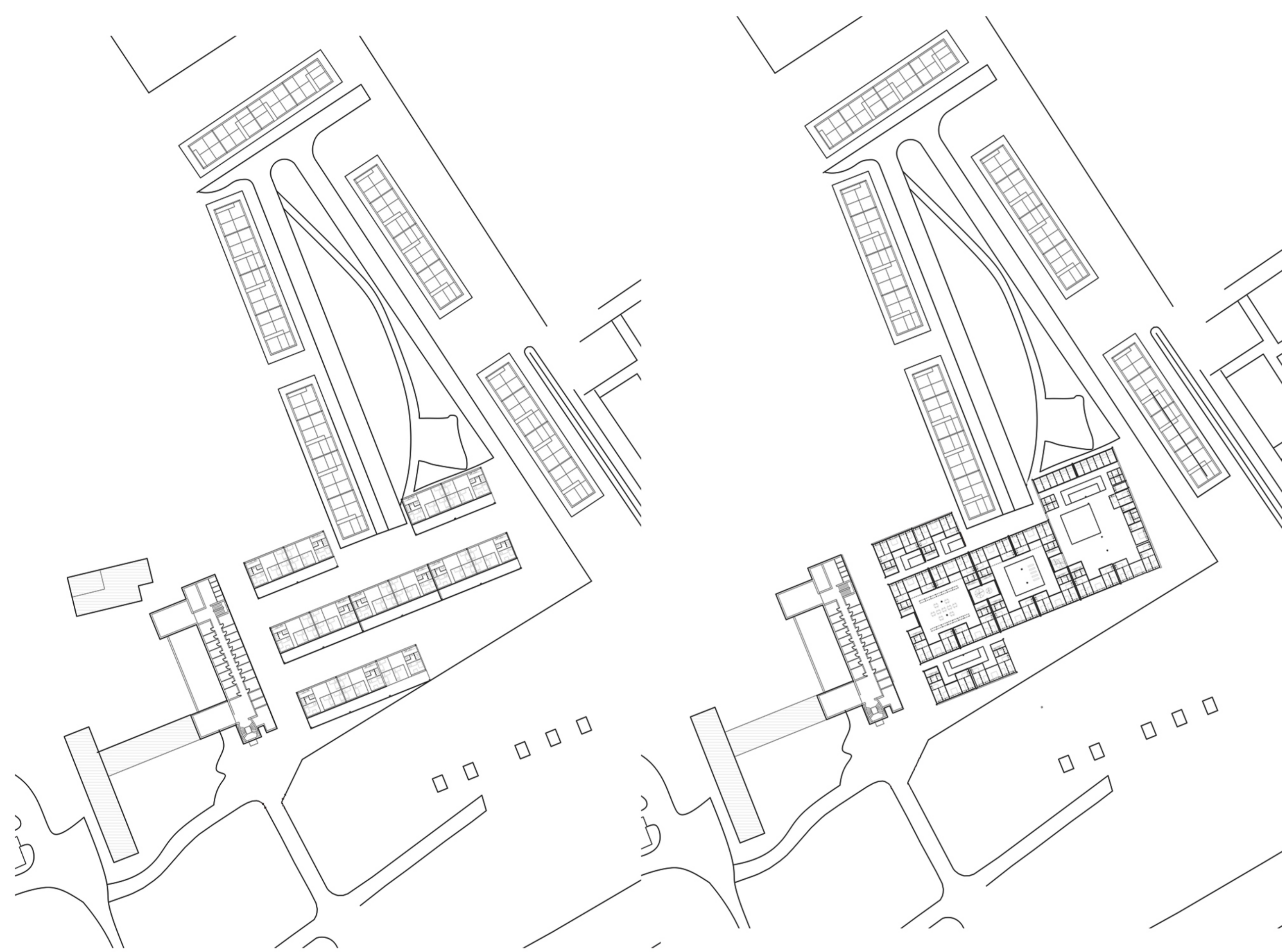
NUMBER OF ACCOMODATED PEOPLE(4groups):
 ground floor 32
 first floor 32
 IN TOTAL : 64
 COUMMUNAL SPACE:
 groundfloor 10 m²*4 =40 m²
 firstfloor 10 m²*4 = 40m²
 IN TOTAL: 80m²
 OCCUPIED ARE :366M²

NUMBER OF ACCOMODATED PEOPLE(4groups):
 ground floor 29
 first floor 29
 second floor 18
 IN TOTAL : 76
 COUMMUNAL SPACE:
 ground 181.44 m²
 first 25.92 m²
 second 25.92
 IN TOTAL: 233.28
 OCCUPIED AREA: 440 M²

layout section comparison



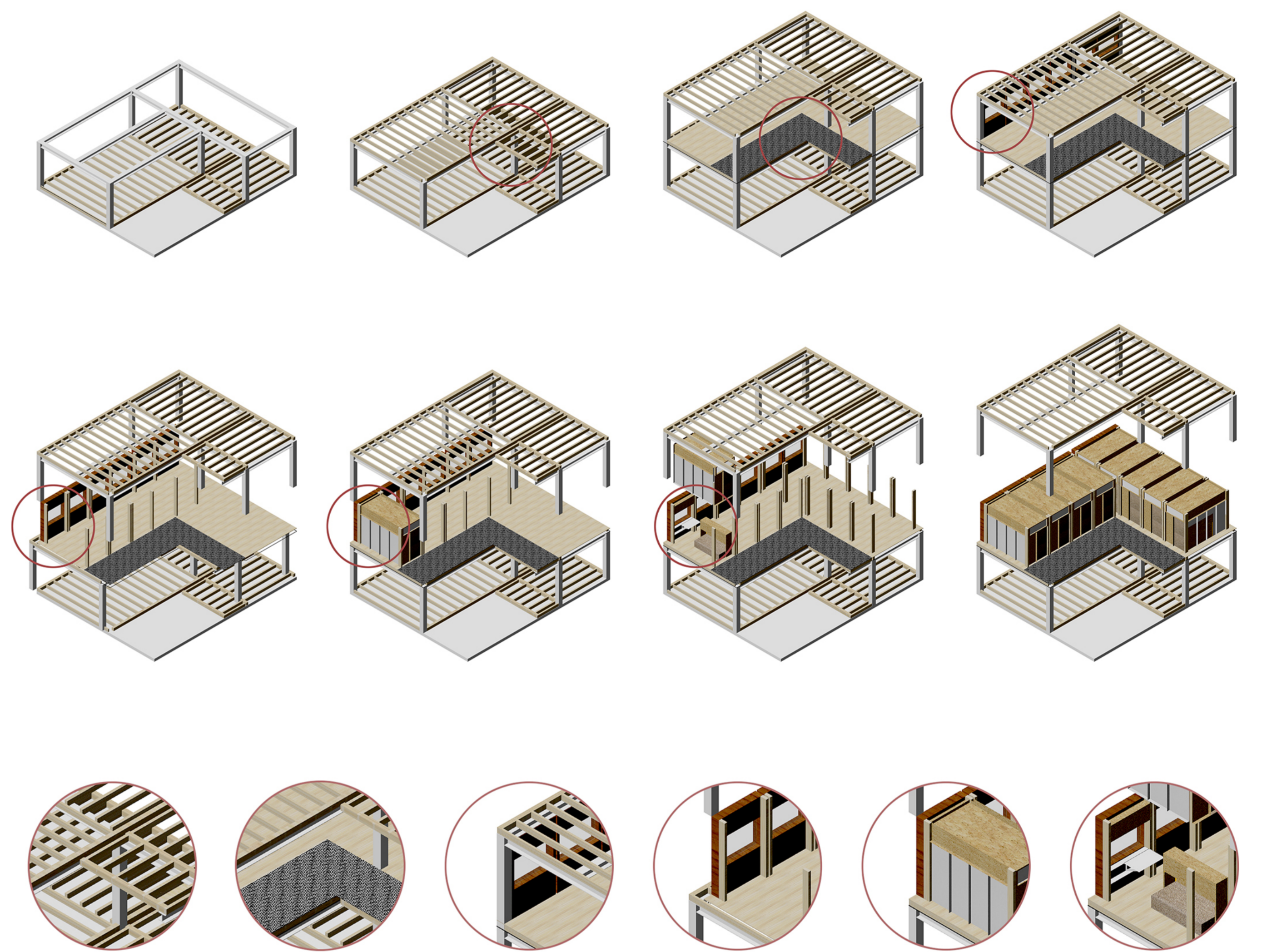
application on site

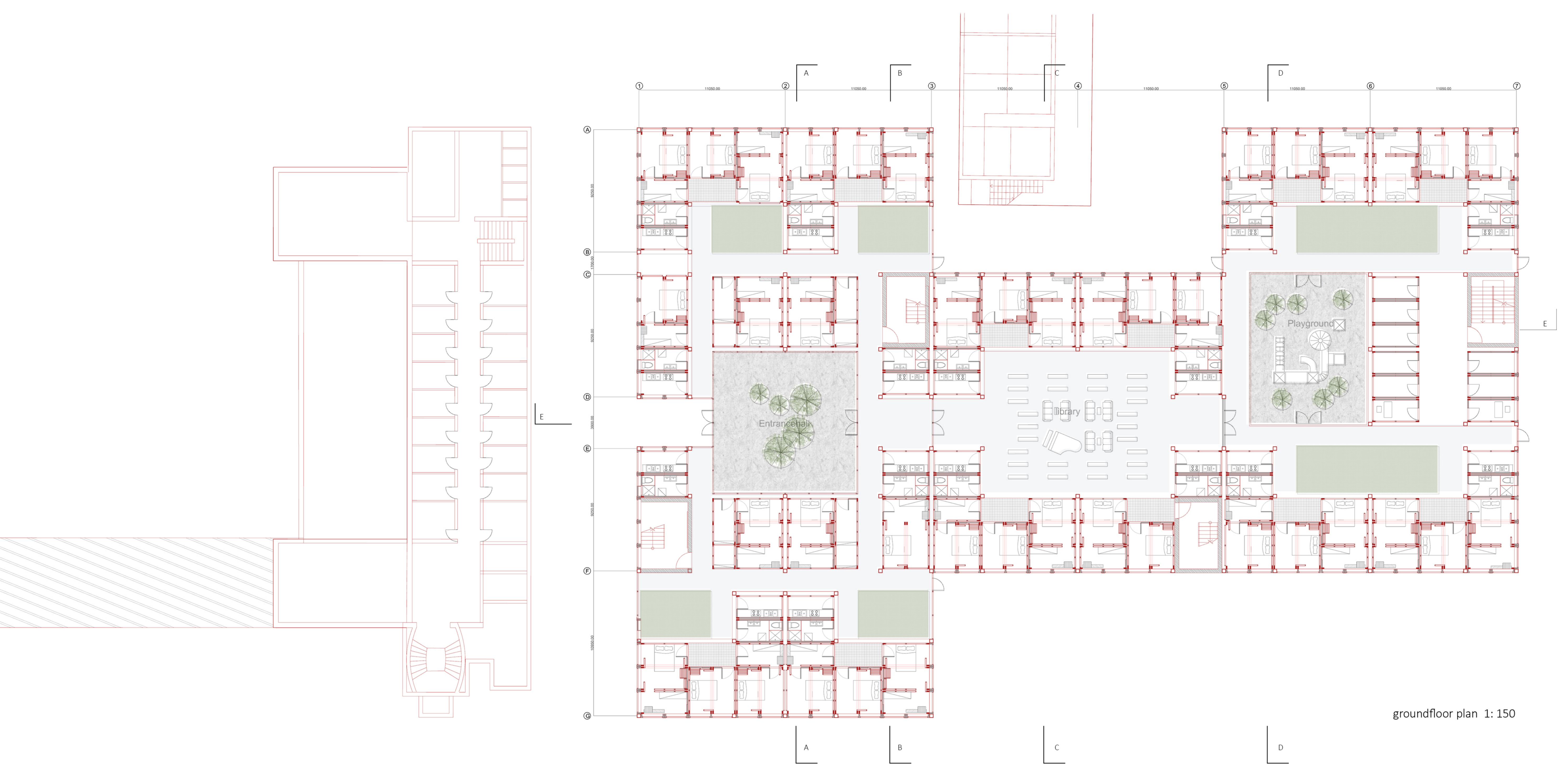


existing way of organization:
 13 groups of people
 2 layers
 In total : 208 person

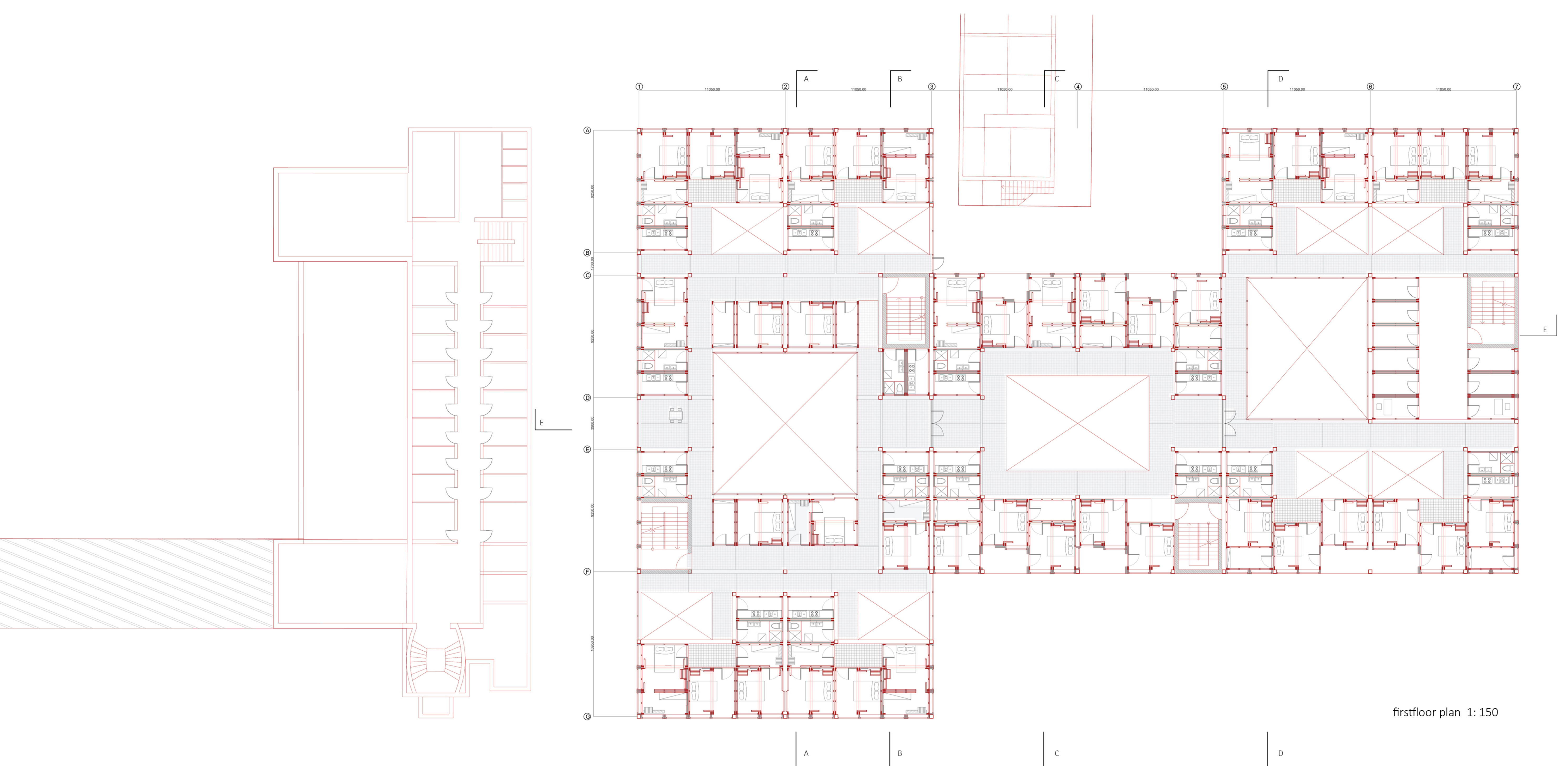
T-box way of organization:
 14 groups of people
 2 layers and 3 layers
 In total: 263 person

Construction process of T-Box community

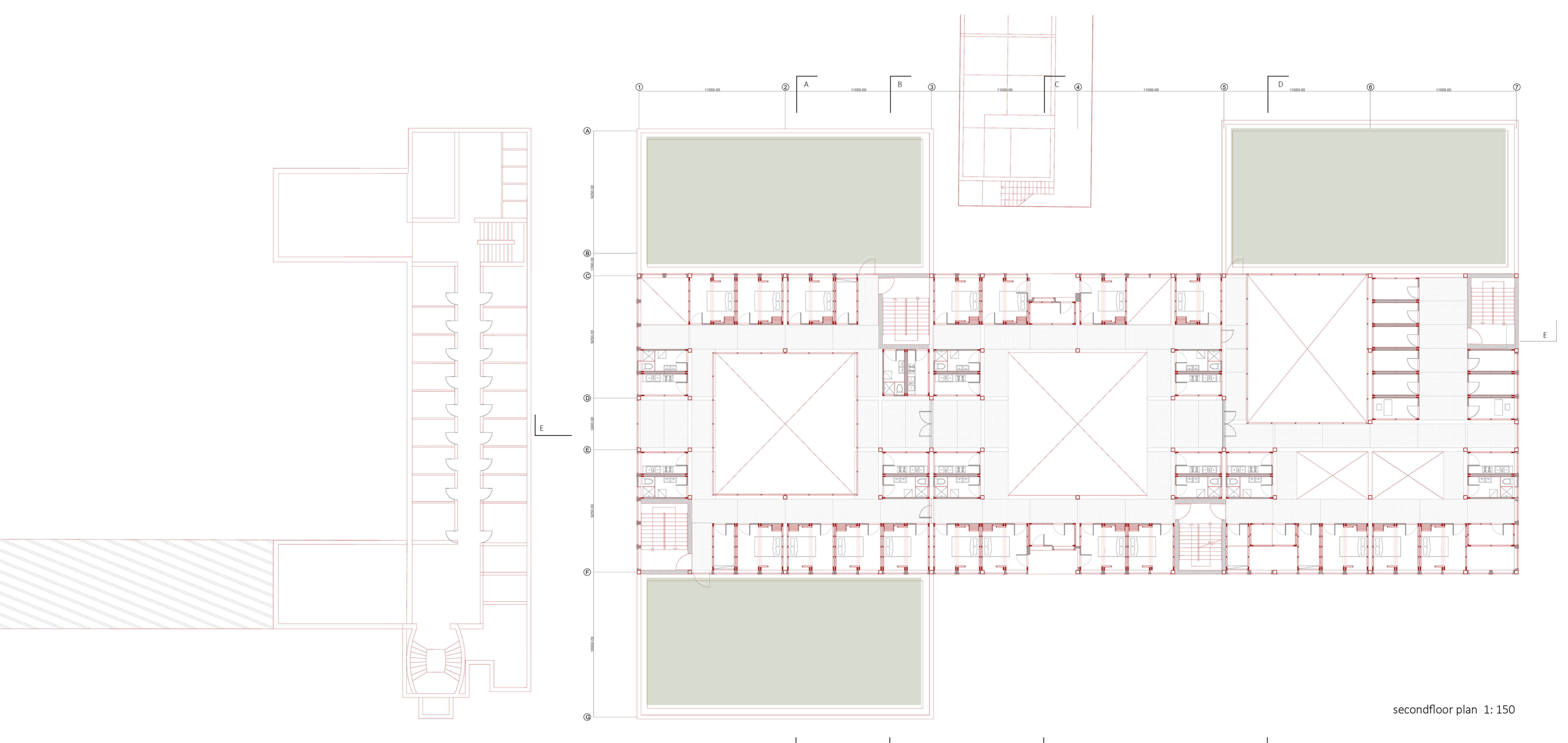




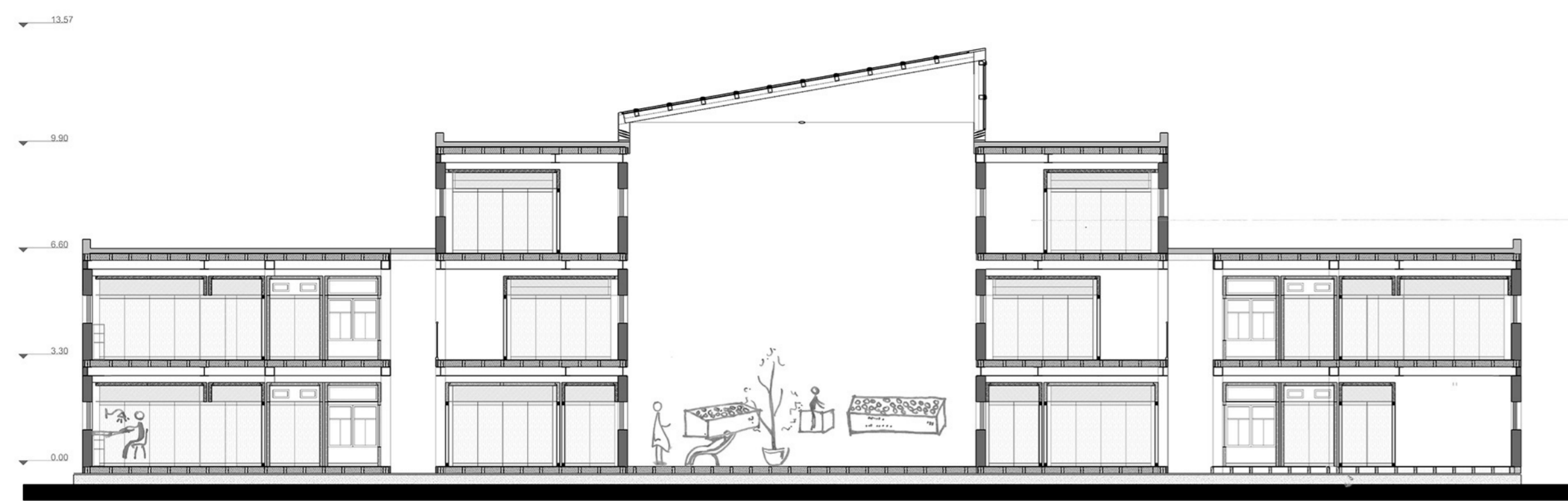
groundfloor plan 1: 150



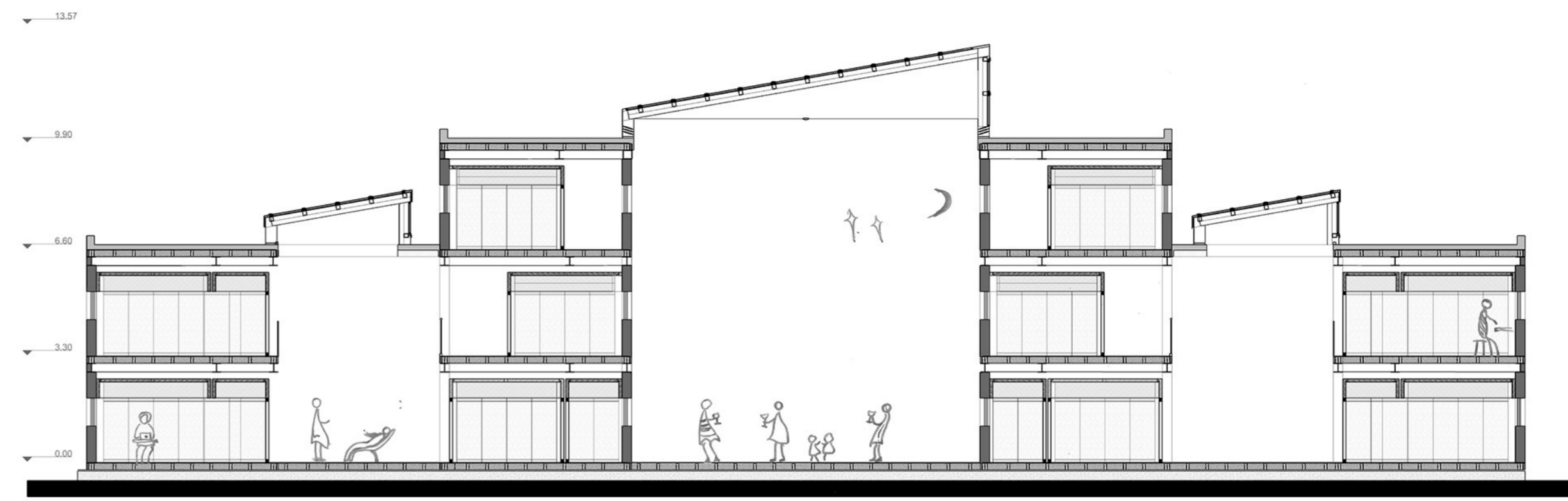
firstfloor plan 1: 150



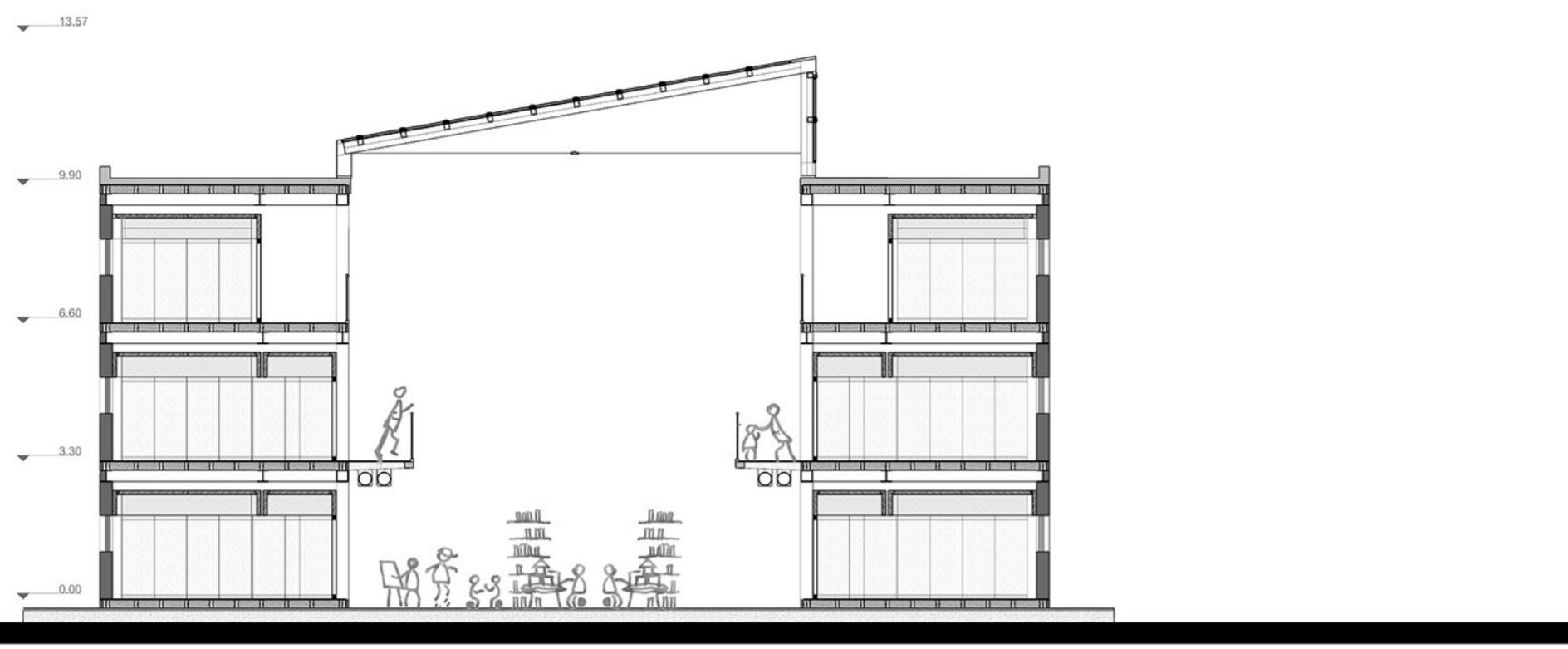
secondfloor plan 1: 150



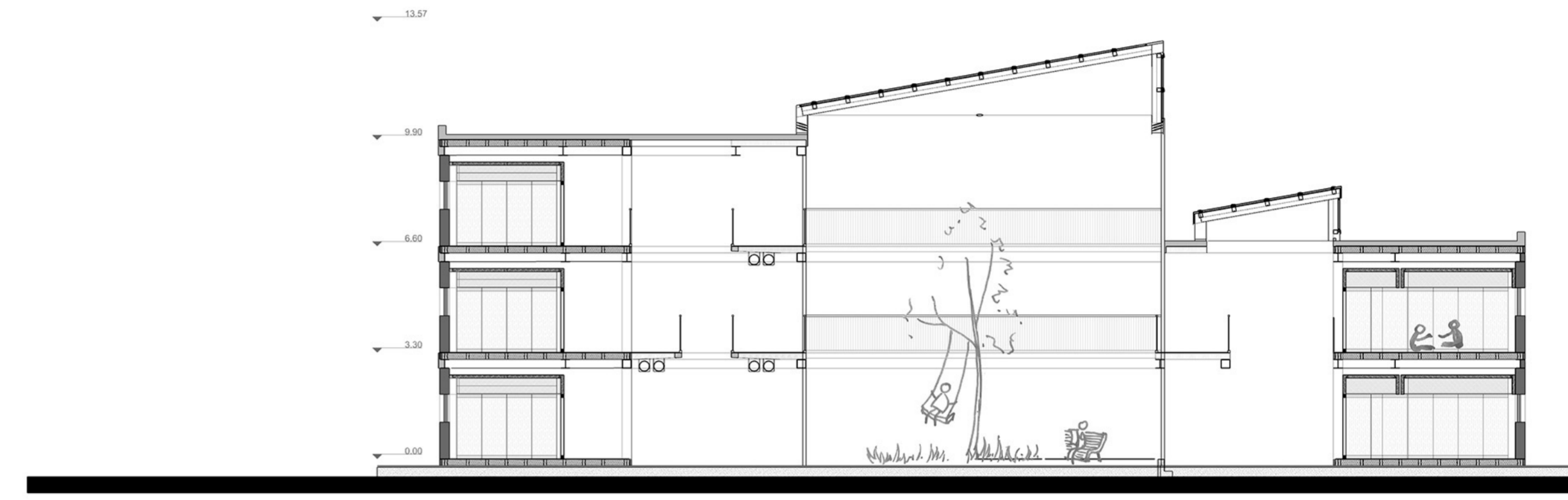
SECTION A-A 1:150



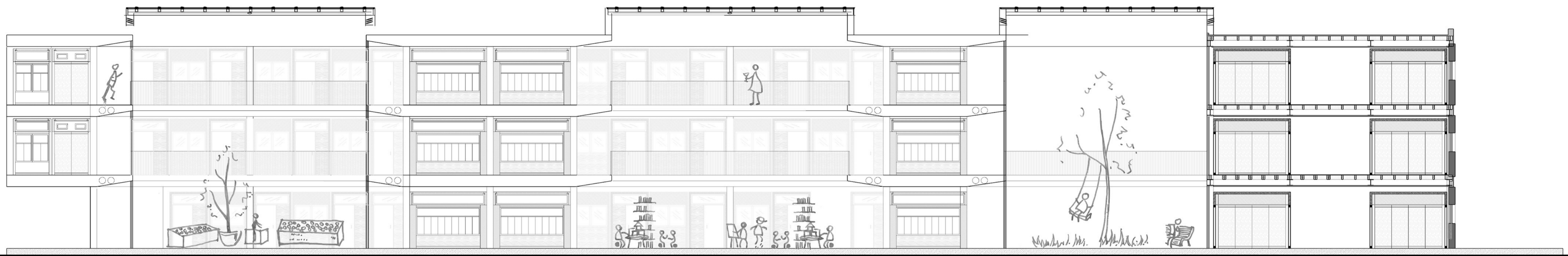
SECTION B-B 1:150



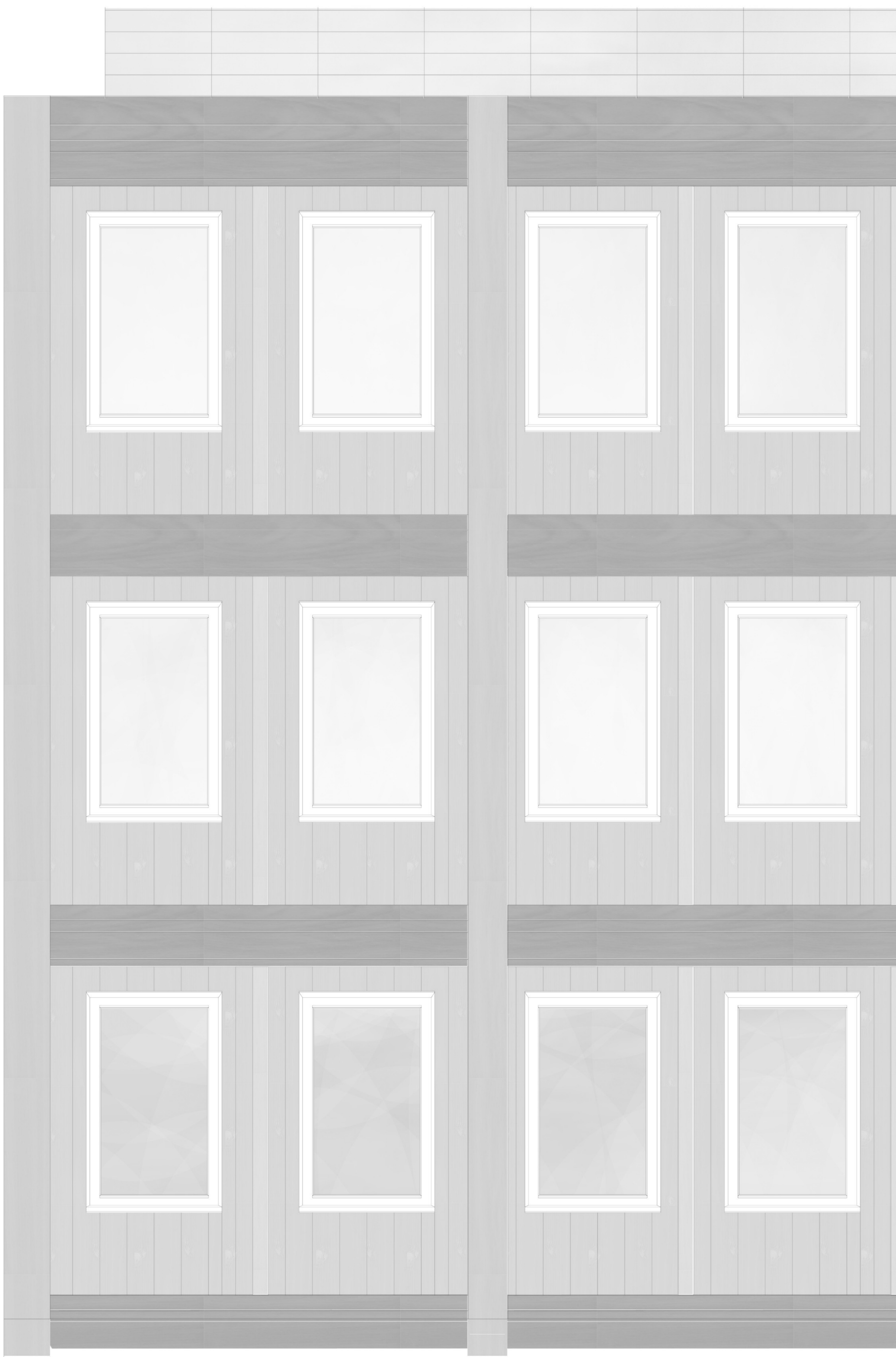
SECTION C-C 1:150



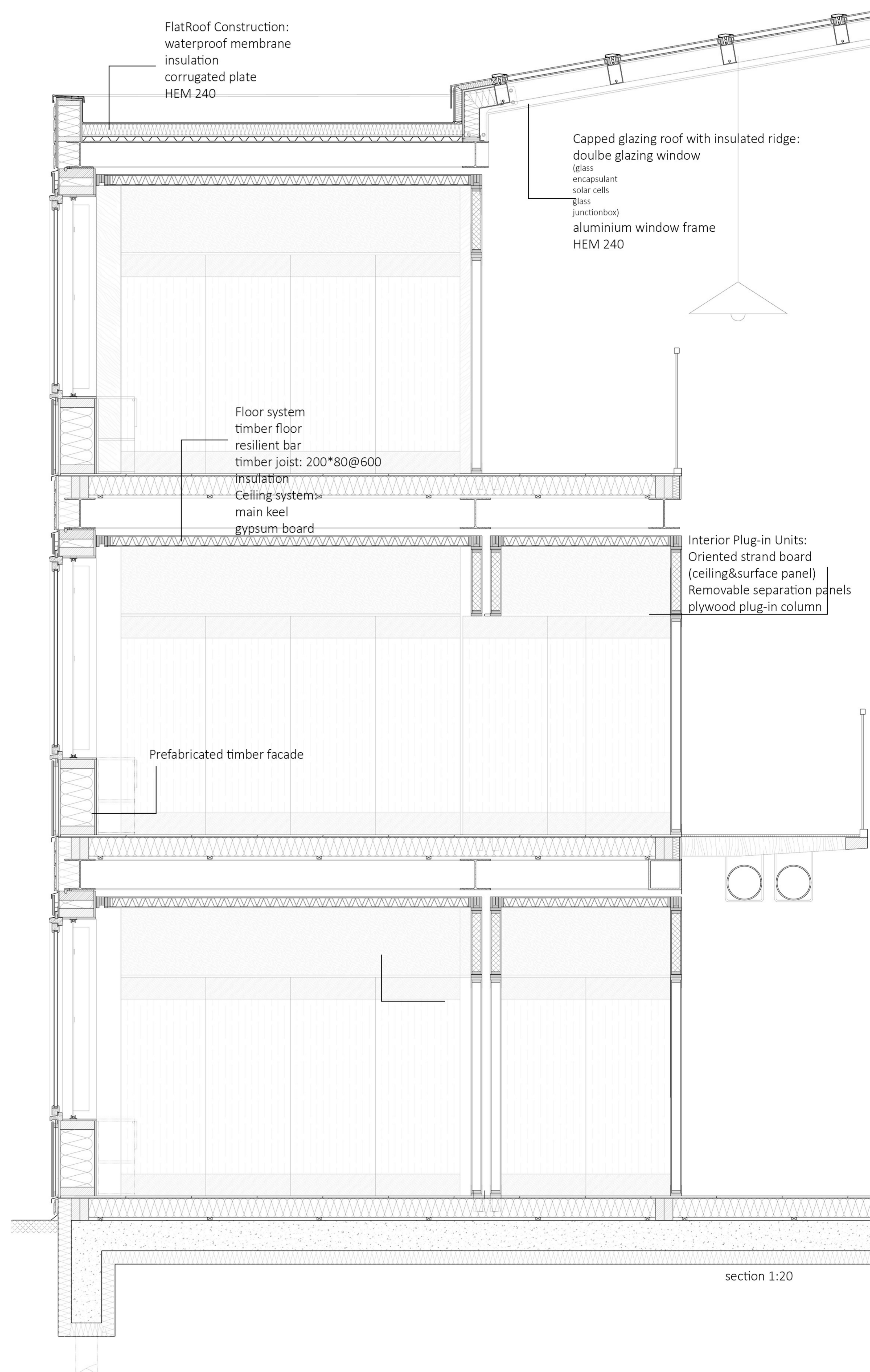
SECTION D-D 1:150



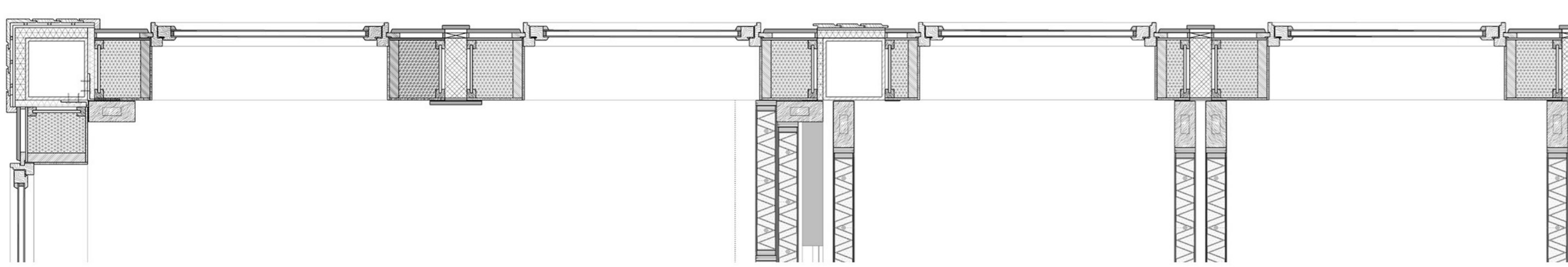
SECTION E-E 1:100



elevation 1:20

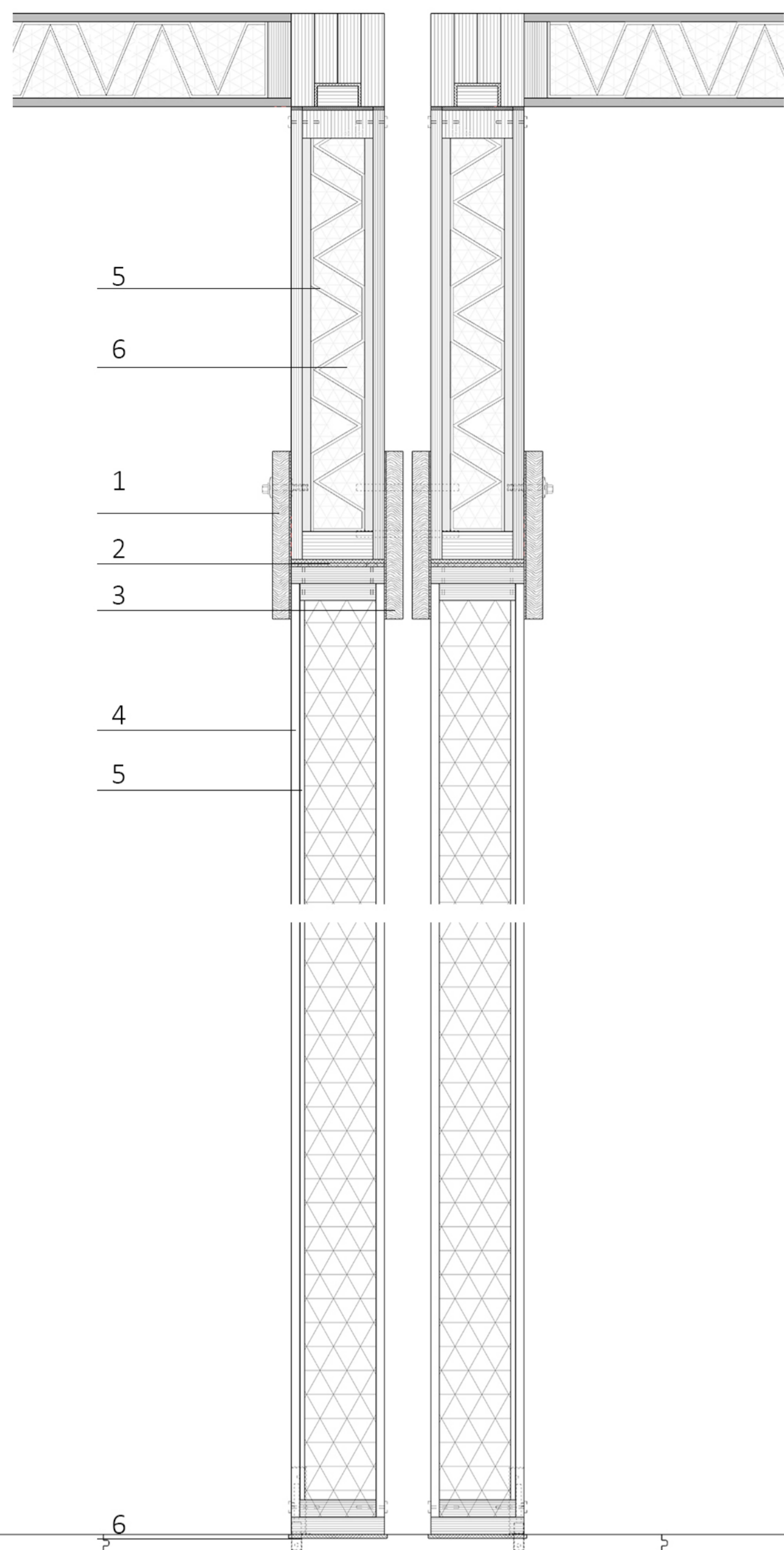


section 1:20

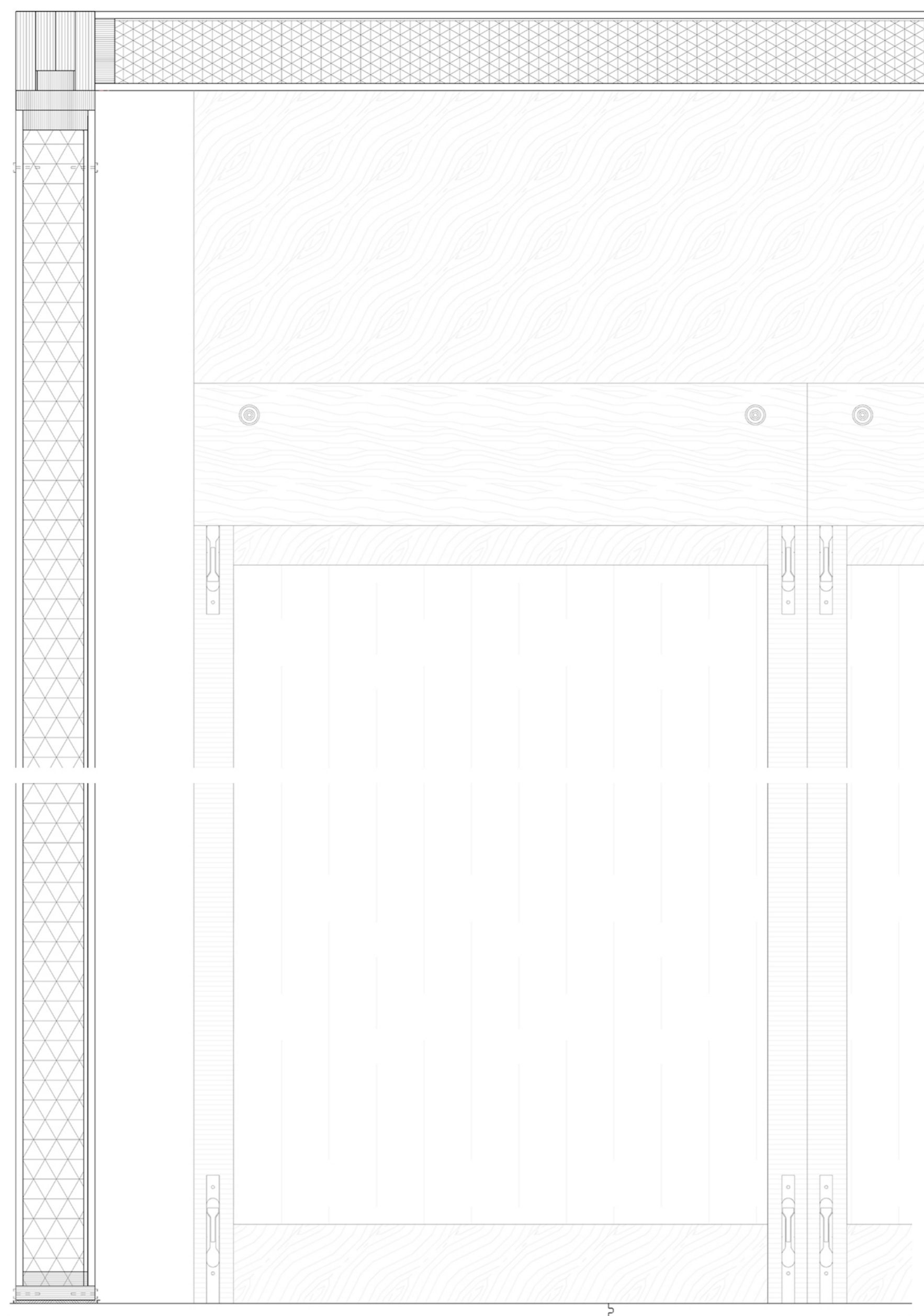


plan 1:20

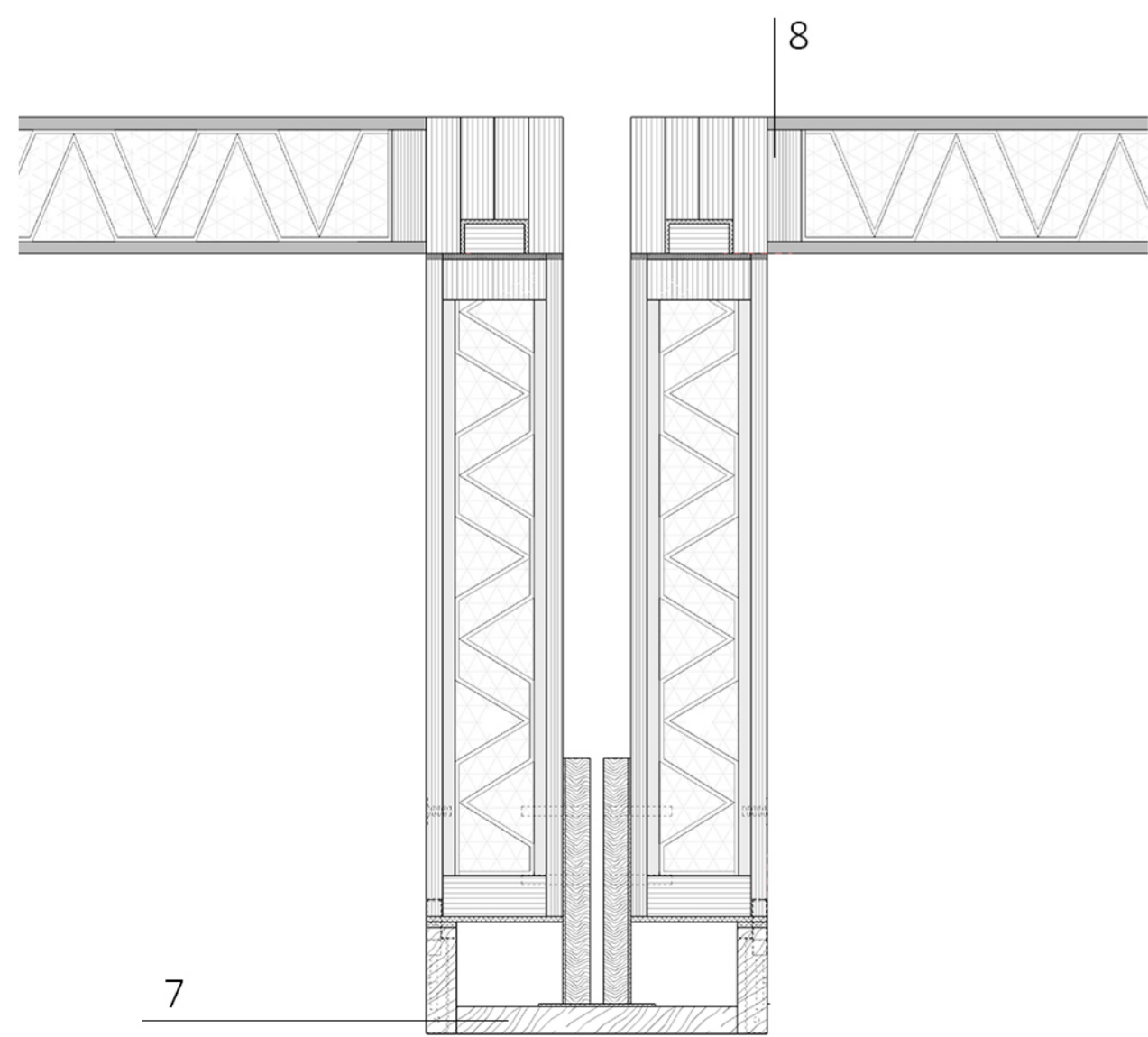
FACADE FRAGMENT 1:20



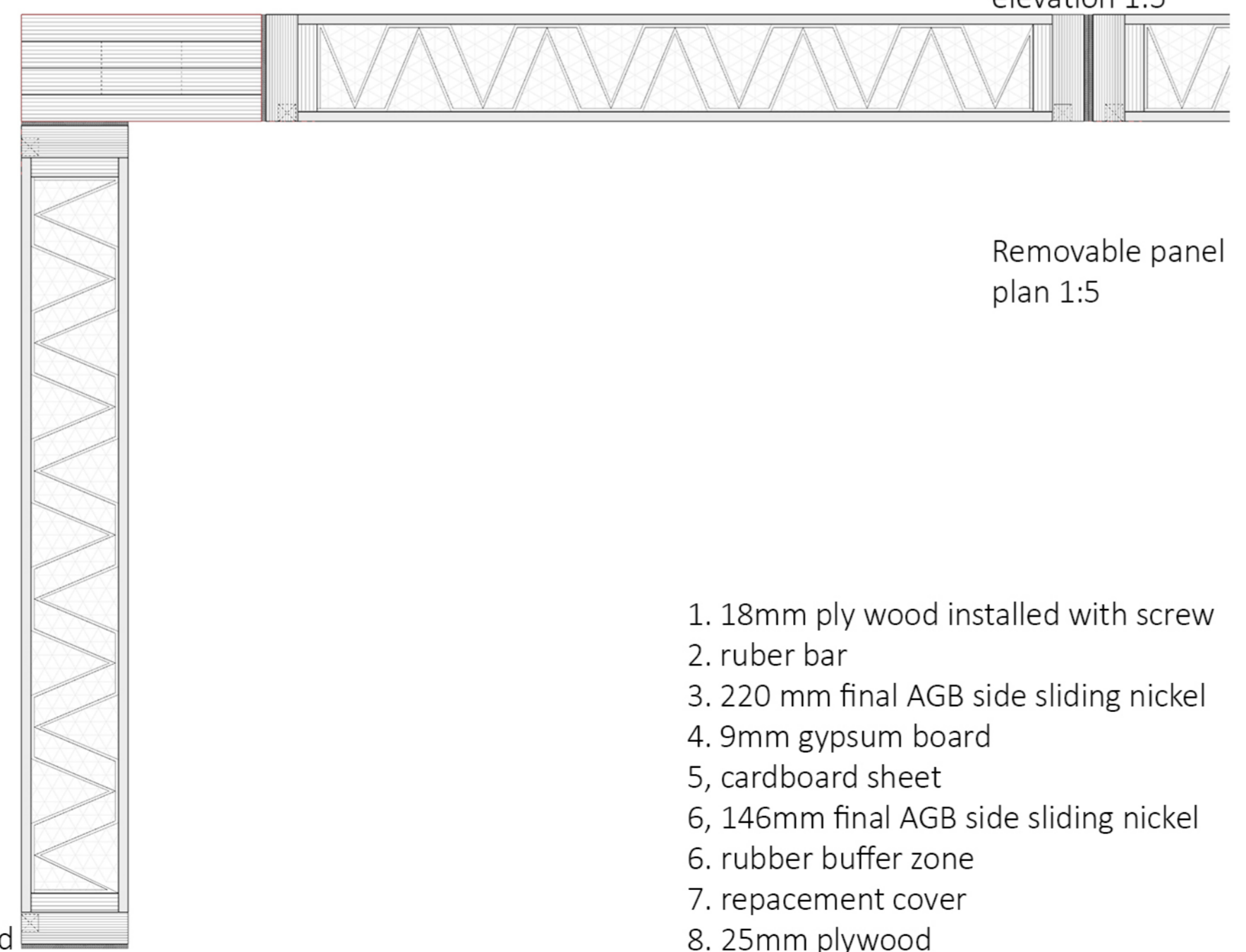
Removable panel
section 1:5



Removable panel
elevation 1:5

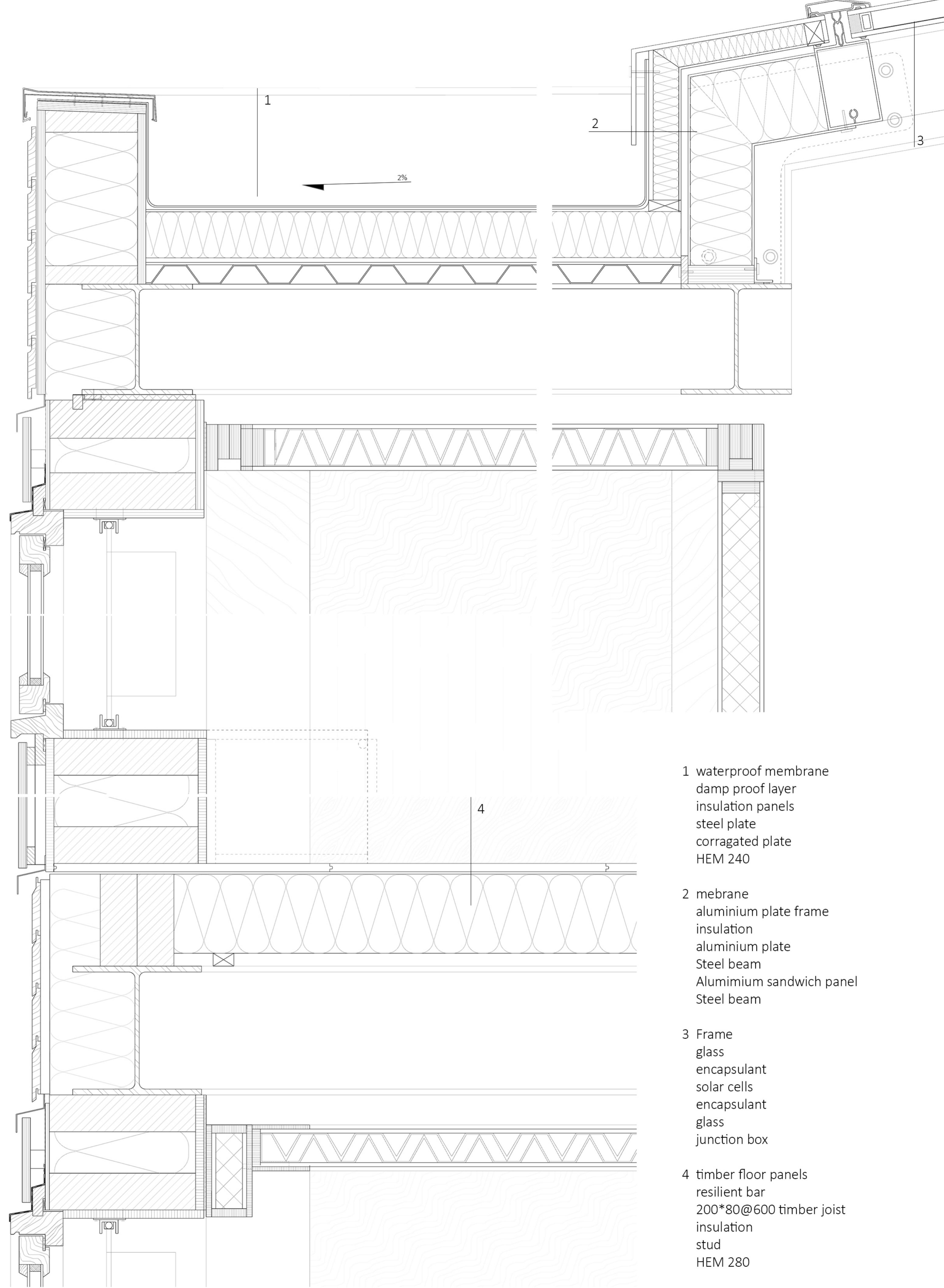


Removable panel removed
section 1:5



Removable panel
plan 1:5

1. 18mm ply wood installed with screw
2. rubber bar
3. 220 mm final AGB side sliding nickel
4. 9mm gypsum board
5. cardboard sheet
6. 146mm final AGB side sliding nickel
6. rubber buffer zone
7. replacement cover
8. 25mm plywood



- 1 waterproof membrane
damp proof layer
insulation panels
steel plate
corrugated plate
HEM 240
- 2 membrane
aluminium plate frame
insulation
aluminium plate
Steel beam
Aluminium sandwich panel
Steel beam
- 3 Frame
glass
encapsulant
solar cells
encapsulant
glass
junction box
- 4 timber floor panels
resilient bar
200*80@600 timber joist
insulation
stud
HEM 280