

PROJECTING URBAN REVOLUTION

CIVIL RESISTANCE & SPACE

STUDIO BORDER CONDITIONS

MSC 4 GAN REN YU

4183002

JUNE 2013

1991 FALL OF COMMUNISM - ALBANIA



"In the perception of most Western observers of international affairs, **Albania remained a curiosity during most of the communist period**, a little known and isolated state, cut off from the outside world by political choice and geography."

James Pettifer & Miranda Vickars, in "From anarchy to a Balkan identity", 1997

"On 20 March in Skenderbeg Square the Democratic Party held a huge rally as the climax of its election campaign. Berisha and other DP leaders spoke to a crowd estimated at 100,000, urging them to unite for real democracy."

James Pettifer & Miranda Vickars, in "From anarchy to a Balkan identity", 1997

"The state has been stealing from us for 45 years. Now it's our turn to steal it all back from the state."

A student points out, regarding the wholesale destruction of public property during the revolution - mobs stripped the hotels, school classrooms lack seats, windows pane, boxes at Tirana have their headlights stolen. In James Pettifer & Miranda Vickars, in "From anarchy to a Balkan identity", 1997



1991 FALL OF COMMUNISM
Largest political transition since 1917 in the Balkans and former Soviet Union

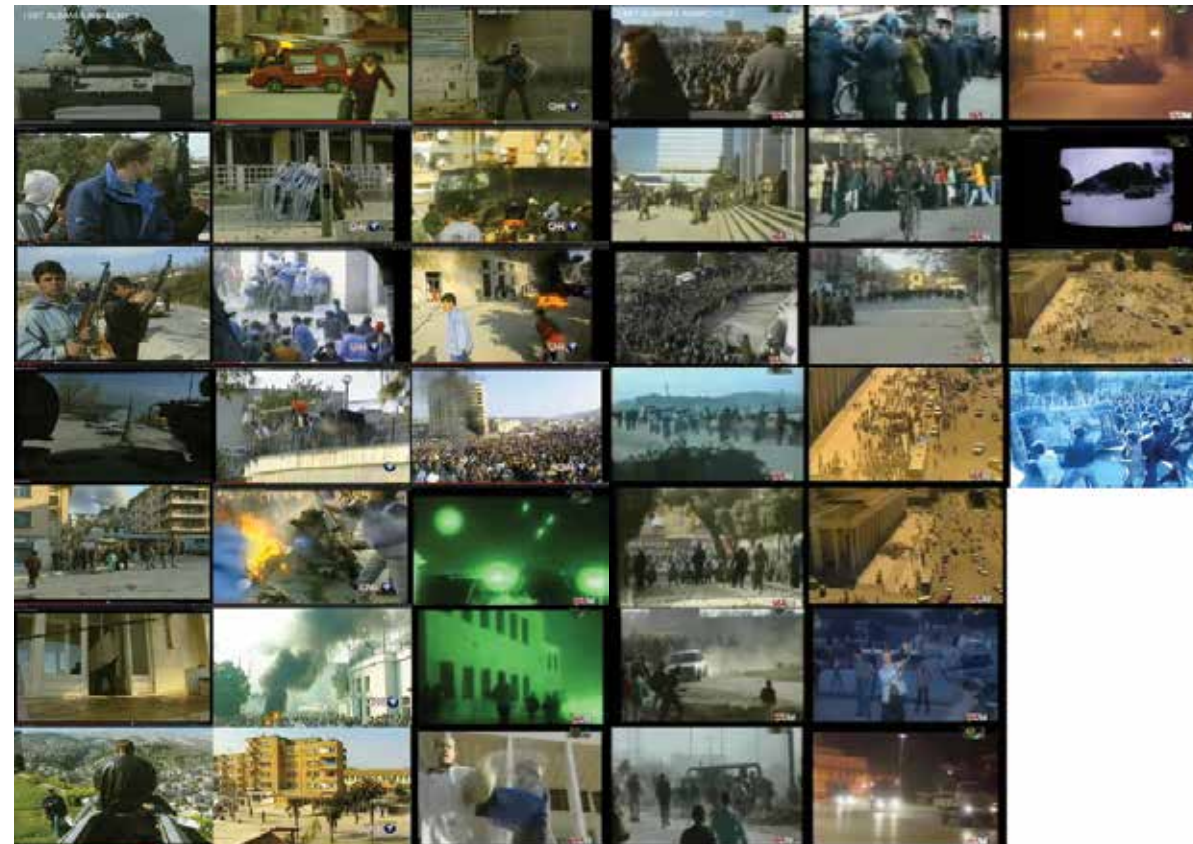
Areas largely taken over by 1991 revolutionaries (democratic party)

Quality made by people involved in 1991 revolution (Democratic Party led by Sali Berisha, young and students, nationalist workers)

Area remaining largely unaffected by 1991 revolution (mostly in the north)

Additional information about 1991 revolution

1997 REVOLUTION - FALL OF SALI BERISHA - ALBANIA



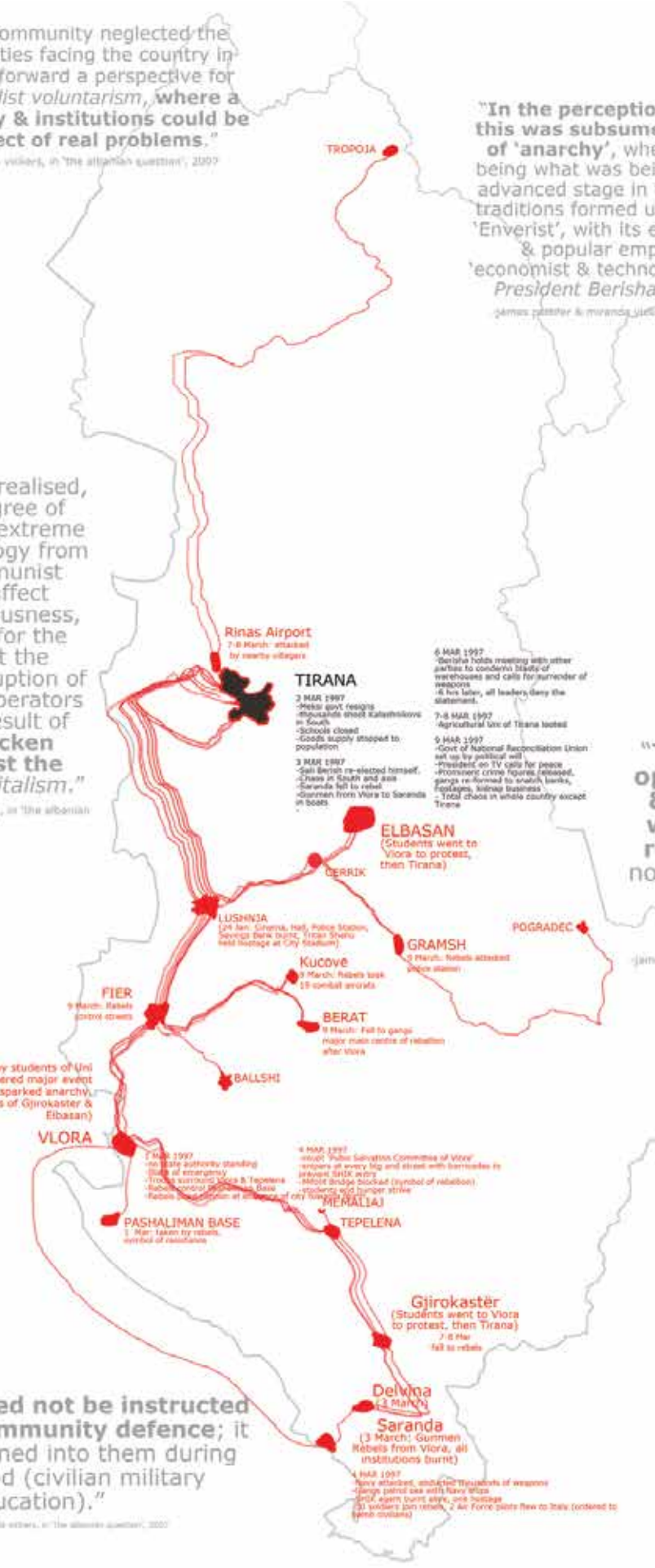
"International community neglected the objective difficulties facing the country in transition & put forward a perspective for Berisha of capitalist voluntarism, where a market economy & institutions could be built by neglect of real problems."
 -James Pettifer & Miranda Vickers, in 'The Albanian Question', 2007

"In the perceptions of foreigners, all this was subsumed under the banner of 'anarchy', whereas in fact that was being what was being worked out was an advanced stage in the conflict between 2 traditions formed under communism: the 'Enverist', with its emphasis on revolution & popular empowerment; & the 'economist & technocratic', represented by President Berisha & his government."
 -James Pettifer & Miranda Vickers, in 'The Albanian Question', 2007

"Few foreigners realised, either, the degree of remnants of an extreme egalitarian ideology from the rigid communist system still affect national consciousness, & it took little for the result against the excesses & corruption of pyramid bank operators to become a result of poverty-stricken rebels against the practice of capitalism."
 -James Pettifer & Miranda Vickers, in 'The Albanian Question', 2007

"The main issue of opposition activists & protest leaders was if they would remain free at all; not if they would get a free lunch from capitalism."
 -James Pettifer & Miranda Vickers, in 'The Albanian Question', 2007

"Albanians need not be instructed on popular community defence; it has been rammed into them during Hoxha period (civilian military education)."
 -James Pettifer & Miranda Vickers, in 'The Albanian Question', 2007



1997 ALBANIAN REVOLUTION
 (Map showing the path of the revolution)

Areas largely taken over by 1997 revolutionaries (shaded in red)

Routes made by people involved in 1997 revolution (shaded in blue)

Areas remaining largely unaffected by 1997 revolution (unshaded)

Additional information about 1997 revolution (www.albania.gov.al)

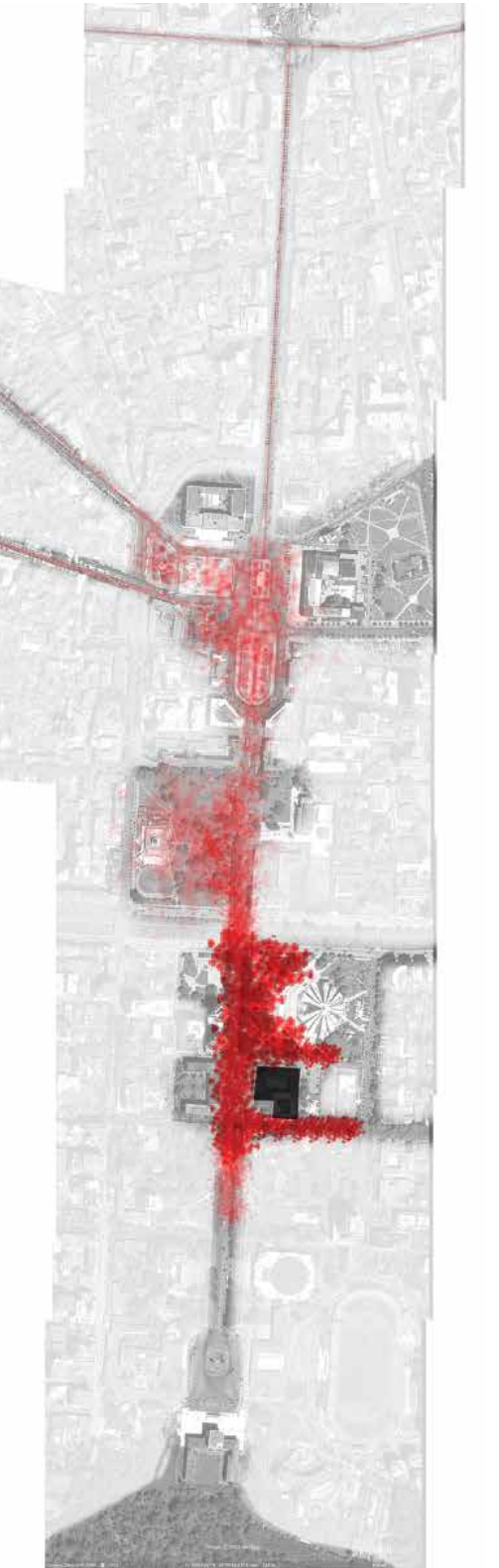
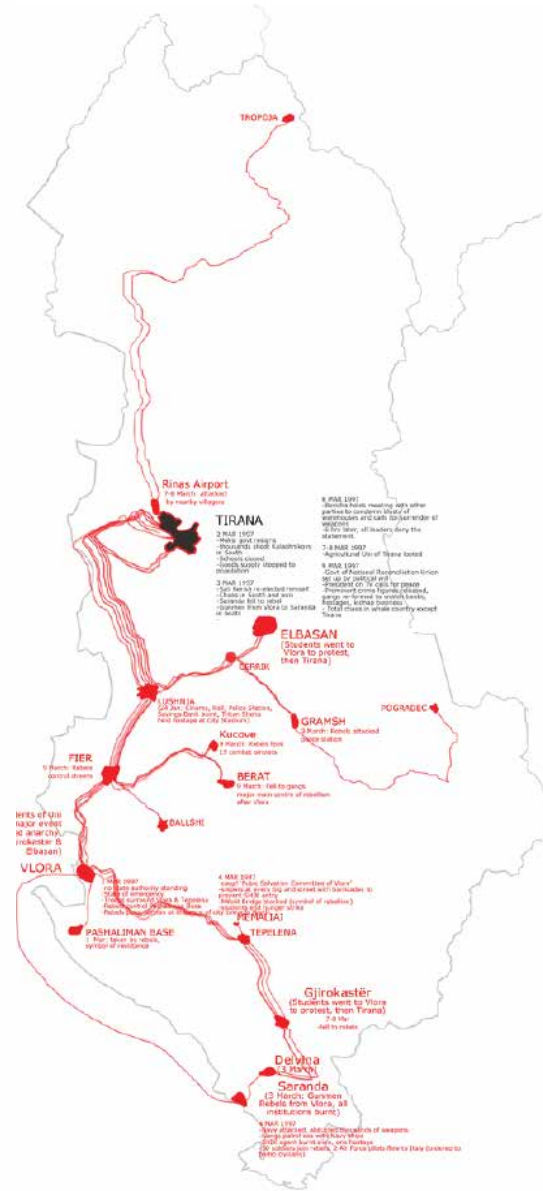
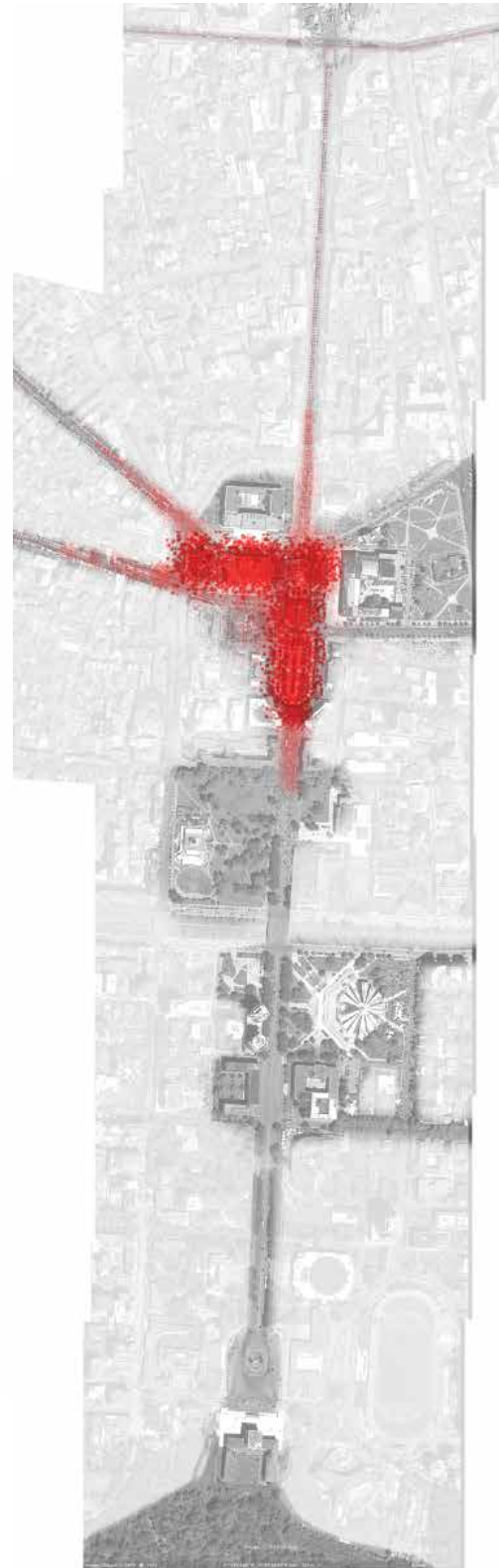
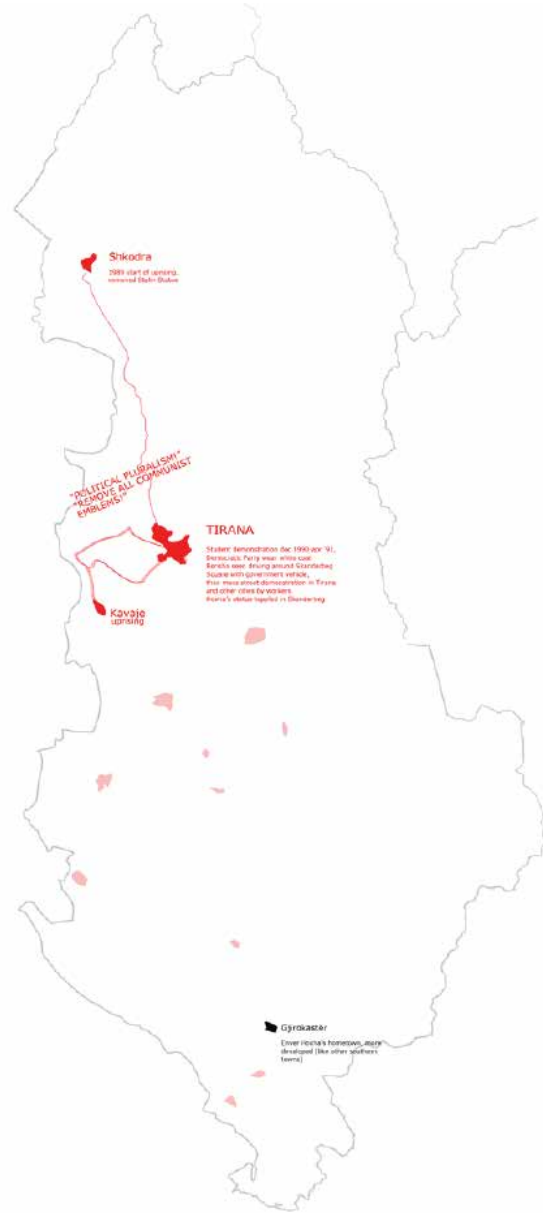
2011 PROTEST- AGAINST ALLEGED ELECTORAL FRAUD - TIRANA



1991 FALL OF COMMUNISM

1997 REVOLUTION - FALL OF SALI BERISHA - ALBANIA

2011 PROTEST- AGAINST ALLEGED ELECTORAL FRAUD





AXIAL PERIPHERY
1.5KM

1KM

ZOGU BOULEVARD
2.1KM

EXTENT OF
EXPLORATION
ON THE AXIS
OF TIRANA,
ALBANIA

Map Maker

****AXIS OF TIRANA: ON-SITE INVESTIGATION
[METHODOLOGY]**

[QUESTIONS ON-SITE]

1. What are the civil resistances observed on-site?
2. What are the power structures that causes these resistances?
3. How do these resistances impact the urban space?
4. Which method of navigation, inventory and mapping fits this topic?



[NAVIGATION & INVENTORY]

route A: take video
by car
along boulevard (power)

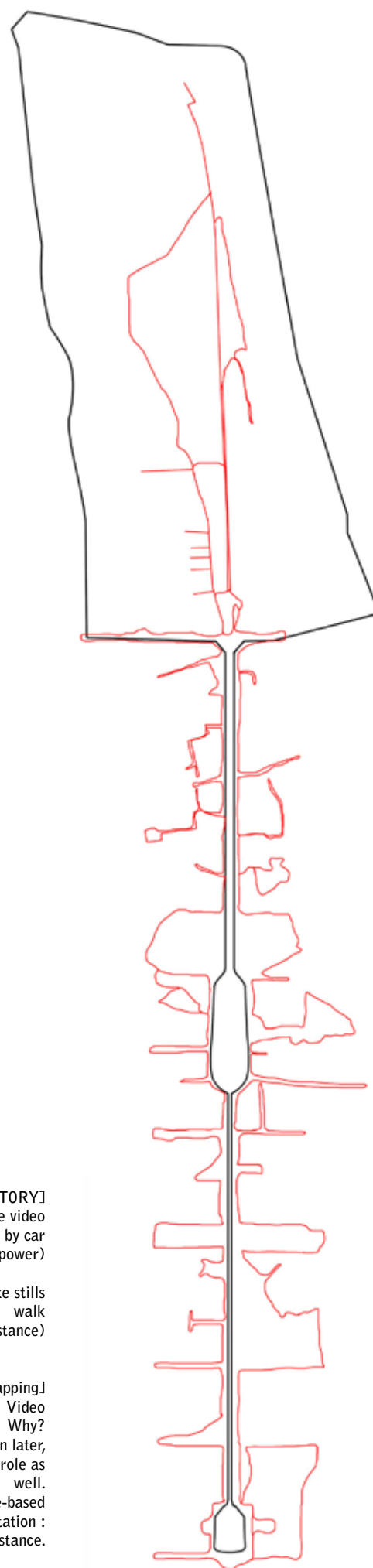
route B : take stills
walk
off the boulevard (resistance)

[Mode of Mapping]

Video
Why?

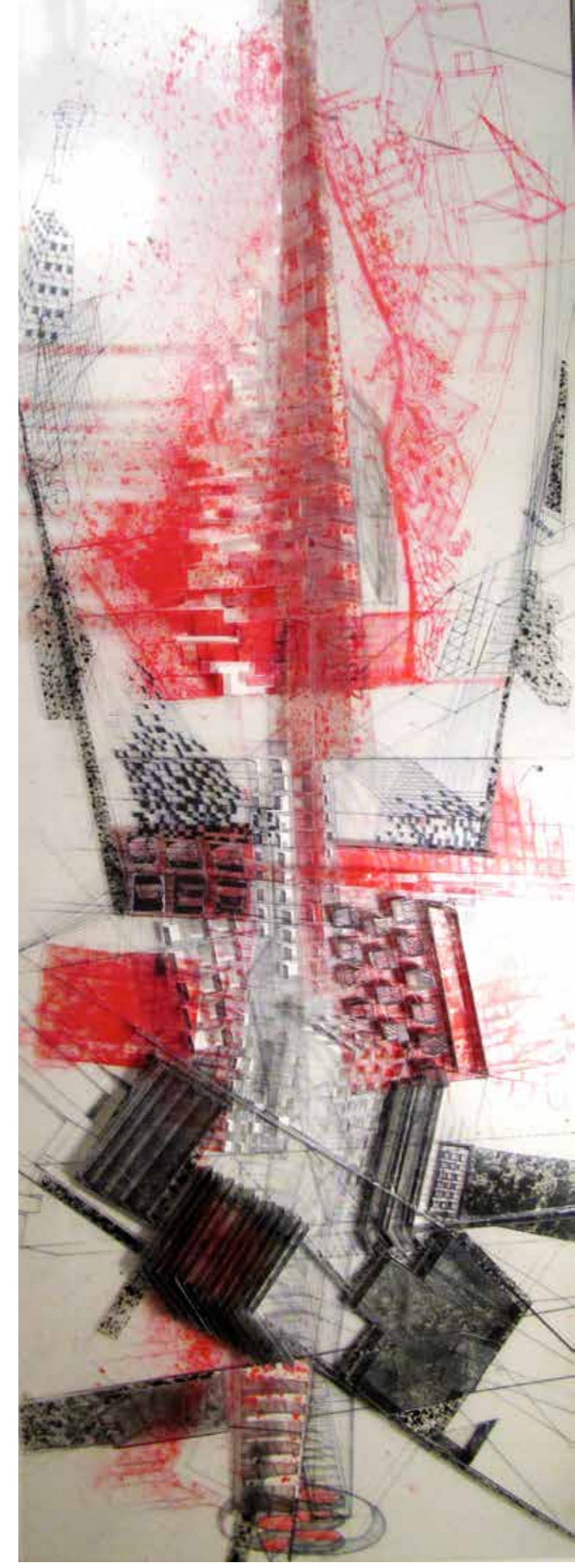
If mapping is to be an integral part of the design later, then the mode of mapping plays an important role as well.

The time-based medium is apt in showing a time-based interpretation : conditions from passive to active everyday resistance.



[MODEL, AXIS OF TIRANA]

- traces of civil resistances as defined
- traces of old power (communist regime)
- traces of new power (current political and neo-liberal products)



#01_self-expression_Tirana_41°19'52"N,19°49'04"E



active_ _ _old power

#02_appropriation__Tirana_41°19'52"N,19°49'04"E

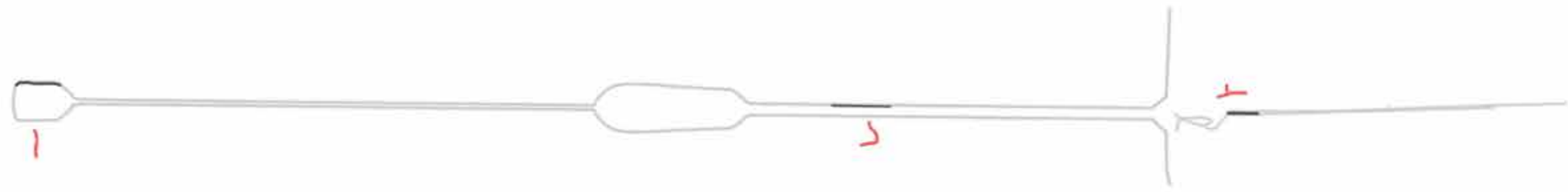


active_ _ _old power

#03_occupation__Tirana_41°20'12"N,19°48'57"E



active_ _ _old power



0 10 20 30m

#01_self-expression_Tirana_41°19'52"N,19°49'04"E



#02_appropriation__Tirana_41°19'52"N,19°49'04"E



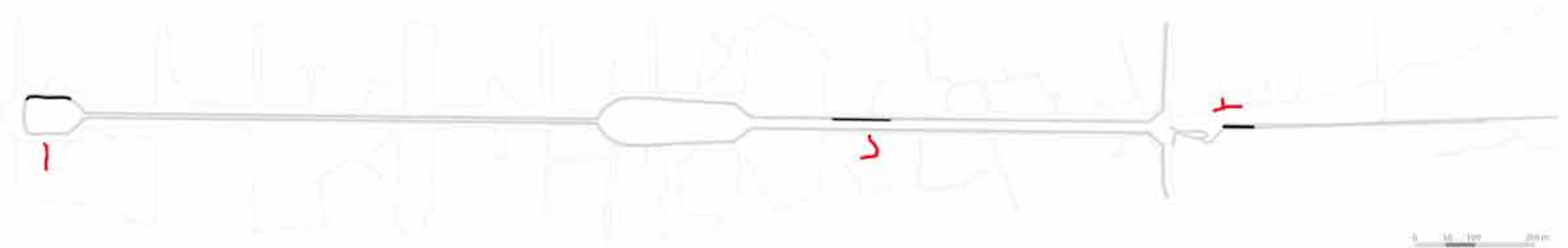
#03_occupation__Tirana_41°20'12"N,19°48'57"E



active_ _ _old & new power

active_ _ _old & new power

active_ _ _old & new power



#01_self-expression_Tirana_41°19'52"N,19°49'04"E



passive_ _ _resistance__[graffiti]
active_ _ _old & new power

#02_appropriation__Tirana_41°19'52"N,19°49'04"E

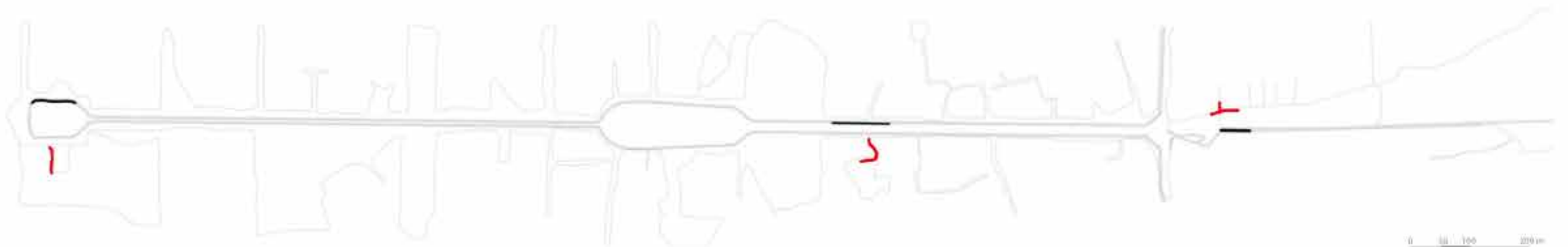


passive_ _ _resistance__[extensions]
active_ _ _old & new power

#03_occupation__Tirana_41°20'12"N,19°48'57"E



passive_ _ _resistance__[bazaar]
active_ _ _old & new power



0 50 100 200m

#01_self-expression_Tirana_41°19'52"N,19°49'04"E

#02_appropriation__Tirana_41°19'52"N,19°49'04"E

#03_occupation__Tirana_41°20'12"N,19°48'57"E



passive_ _ _resistance__[graffiti]
active_ _ _old & new power

passive_ _ _resistance__[extensions]
active_ _ _old & new power

passive_ _ _resistance__[bazaar]
active_ _ _old & new power



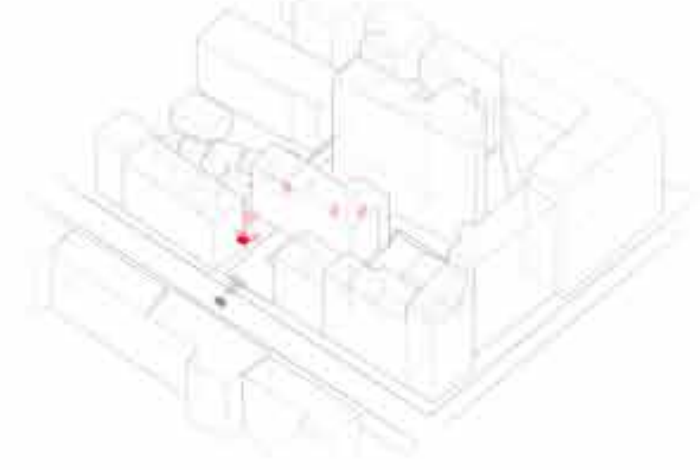
0 50 100 200m

#01_self-expression_Tirana_41°19'52"N,19°49'04"E



_ _active_resistance__ [graffiti]

#02_appropriation__Tirana_41°19'52"N,19°49'04"E



_ _active_resistance__ [extensions]

#03_occupation__Tirana_41°20'12"N,19°48'57"E

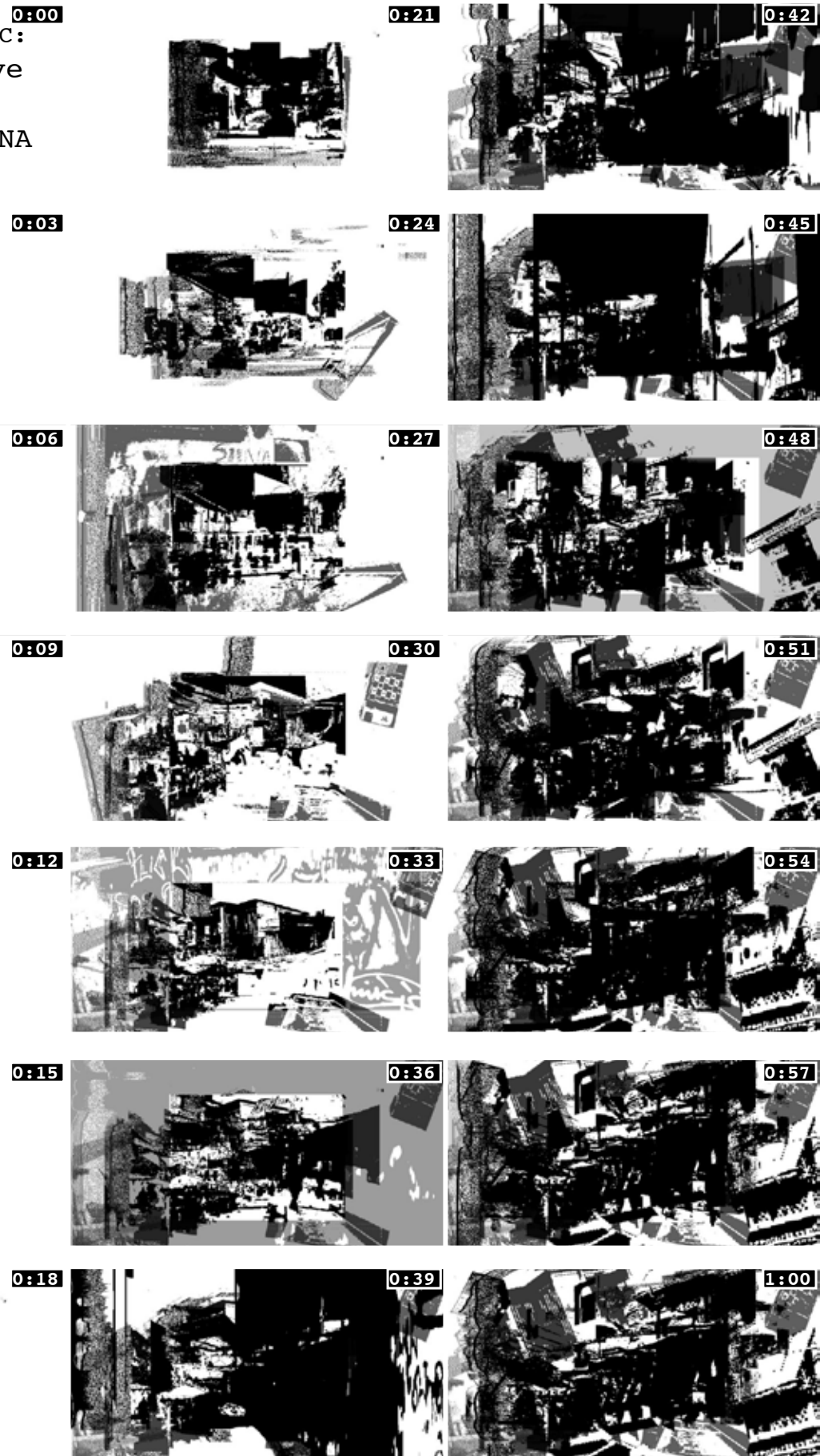


_ _active_resistance__ [bazaar]

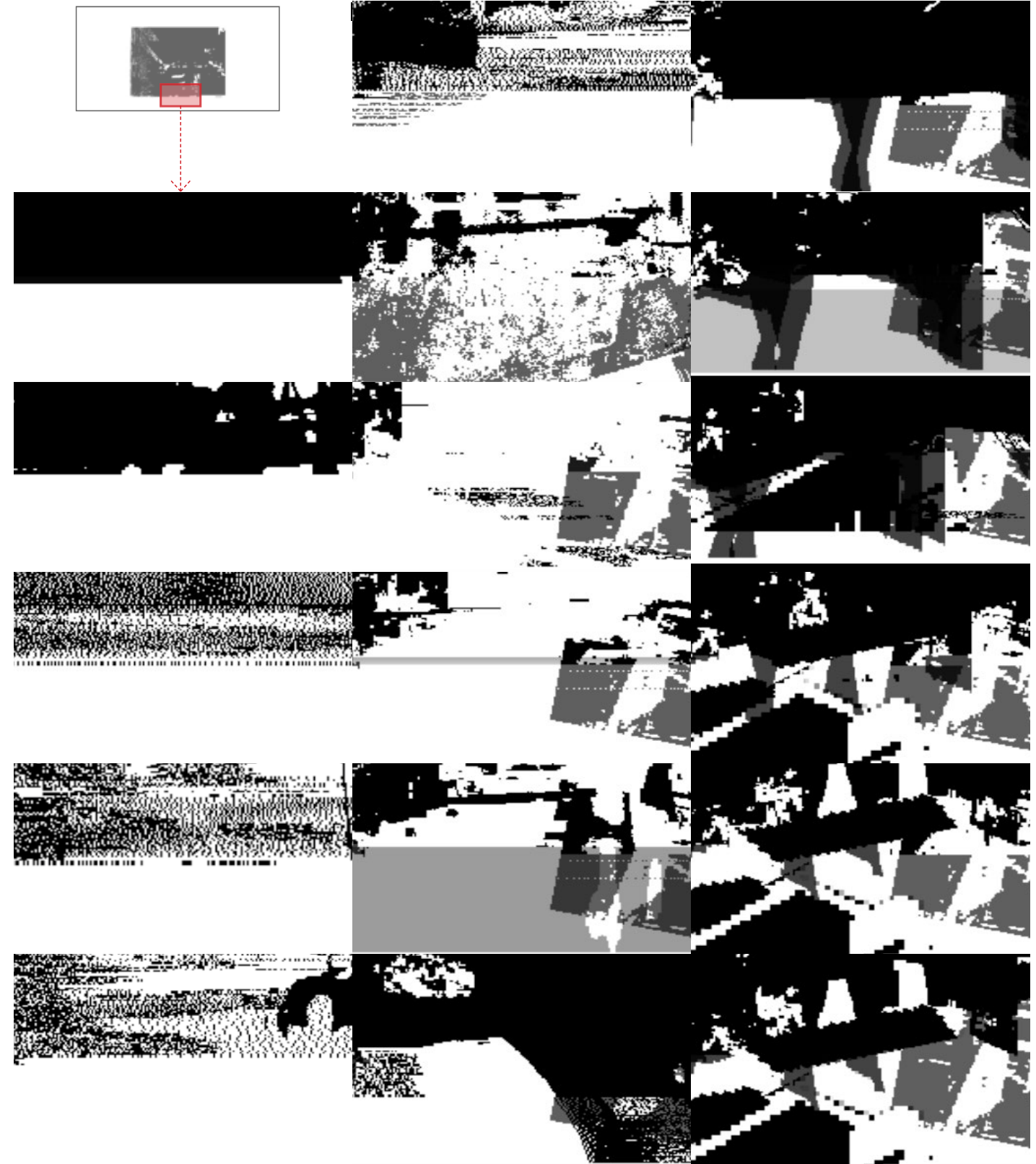


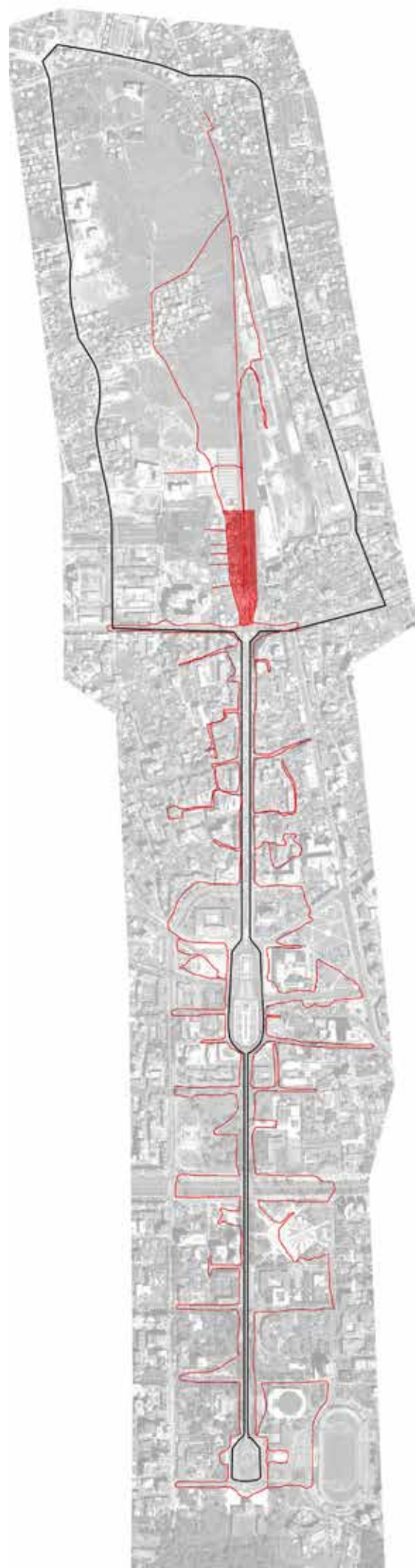
0 50 100 200m

abstracted mapping C:
passive to active
resistances in
the axis of TIRANA
#01+#02+#03



part of
abstracted mapping C:
passive to active
resistances in
the axis of TIRANA
#01+#02+#03





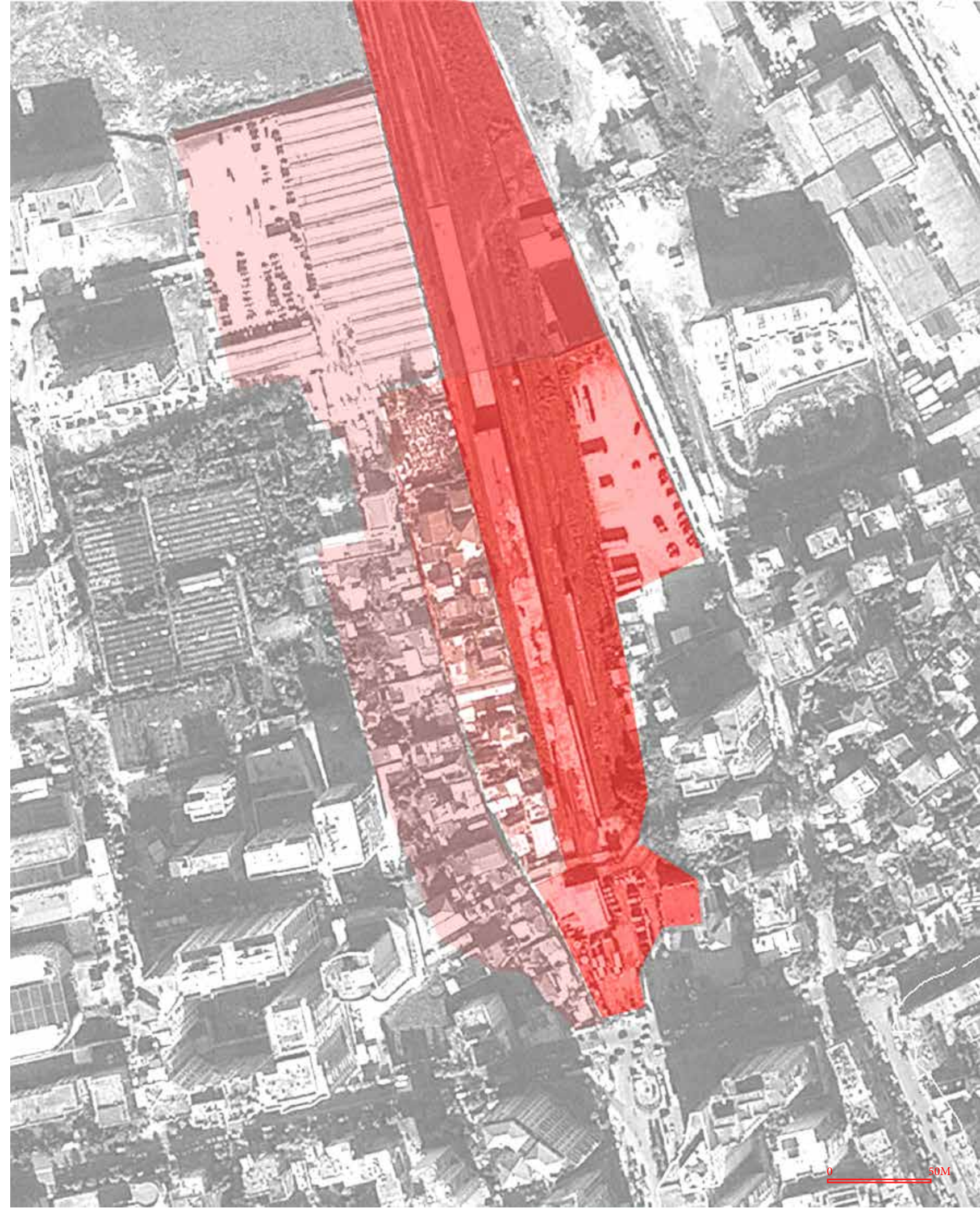
[DESIGN INTENT]

THE URBAN REVOLUTION IS VITAL TO THE CONTINUITY OF URBANITY. RESISTANCES ACTS AND REACTS UPON POWER RELATIONS AND CIRCUMSTANCES IDEOLOGICALLY, SPATIALLY, IN REALITY AND VIRTUAL-REALITY. THE ARCHITECT IS ONE OF THE MANY PEOPLE TO BE INVOLVED IN THE PROCESS OF REVOLUTION.

TO CREATE A TERRITORY THAT CULMINATES AND ACCUMULATES CIVIL RESISTANCES IN TIRANA, AS COUNTER-BALANCE TO THE 'POWER BOULEVARD'.

[SITE]

REVIVE THE OLD GATE OF ENTRY INTO TIRANA - THE TRAIN STATION, LOCATED AT THE END OF THE BOULEVARD, BUT THE CENTRAL TO THE AXIS WHICH CONTAINS BOTH THE CENTRE AND THE PERIPHERY.



ACCUMULATION OF CIVIL RESISTANCES IN REAL & VIRTUAL SPACE - TIRANA

SELF-EXPRESSION

virtual moral consensus on issues gathered

Censorship Circumvention

opposition leaders discuss strategies & tactics

private planting to beautify surroundings

graffiti

hunger strike

public speech

appropriating urban furniture to sell fruits, umbrellas, toys, magazines.

self-organised, informal settlement

post subversive message or image or video

gathering intelligence by spying

influence through conversations in everyday settings

post-revolution peace bell

painting bright colours on communist-era buildings

sit-in, pray-in

homeless sleeping in the parks

appropriating empty fields for farming and grazing

view, share a subversive tweet or post or link

personal ideological convictions to reject the system

discussing politics in school

black and white TID tower

painting bright colours on private homes

march-in protest

make physical extensions to shop or home

self-made kiosks on public land

set up social news website

react or act in real space upon viewing tweet or post or link

physical clashes

tourist visits non-touristic locations

trespassing fences & boundaries

non-violent blockade

protest camp

live protest broadcasting on social websites

social media to organise protests

petition

looting

burning

honouring the dead / mock funeral

climbing up Skanderberg statue

flying Albanian flag at top of pyramid

operating at communist-era pyramid

set up online shop

broadcasting reports

print media reports

open letter of opposition

prisoners freed

cycling without cycling tracks

push-cart businesses along boulevard

selling corn, umbrella, phone cards & jewellery by roadside

constructing without license on public land

APPROPRIATION

graffiti

hunger strike

public speech

appropriating urban furniture to sell fruits, umbrellas, toys, magazines.

self-organised, informal settlement

post subversive message or image or video

gathering intelligence by spying

influence through conversations in everyday settings

post-revolution peace bell

painting bright colours on communist-era buildings

sit-in, pray-in

homeless sleeping in the parks

appropriating empty fields for farming and grazing

view, share a subversive tweet or post or link

personal ideological convictions to reject the system

discussing politics in school

black and white TID tower

painting bright colours on private homes

march-in protest

make physical extensions to shop or home

self-made kiosks on public land

set up social news website

react or act in real space upon viewing tweet or post or link

physical clashes

tourist visits non-touristic locations

trespassing fences & boundaries

non-violent blockade

protest camp

live protest broadcasting on social websites

social media to organise protests

petition

looting

burning

honouring the dead / mock funeral

climbing up Skanderberg statue

flying Albanian flag at top of pyramid

operating at communist-era pyramid

set up online shop

broadcasting reports

print media reports

open letter of opposition

prisoners freed

cycling without cycling tracks

push-cart businesses along boulevard

selling corn, umbrella, phone cards & jewellery by roadside

constructing without license on public land

OCCUPATION

graffiti

hunger strike

public speech

appropriating urban furniture to sell fruits, umbrellas, toys, magazines.

self-organised, informal settlement

post subversive message or image or video

gathering intelligence by spying

influence through conversations in everyday settings

post-revolution peace bell

painting bright colours on communist-era buildings

sit-in, pray-in

homeless sleeping in the parks

appropriating empty fields for farming and grazing

view, share a subversive tweet or post or link

personal ideological convictions to reject the system

discussing politics in school

black and white TID tower

painting bright colours on private homes

march-in protest

make physical extensions to shop or home

self-made kiosks on public land

set up social news website

react or act in real space upon viewing tweet or post or link

physical clashes

tourist visits non-touristic locations

trespassing fences & boundaries

non-violent blockade

protest camp

live protest broadcasting on social websites

social media to organise protests

petition

looting

burning

honouring the dead / mock funeral

climbing up Skanderberg statue

flying Albanian flag at top of pyramid

operating at communist-era pyramid

set up online shop

broadcasting reports

print media reports

open letter of opposition

prisoners freed

cycling without cycling tracks

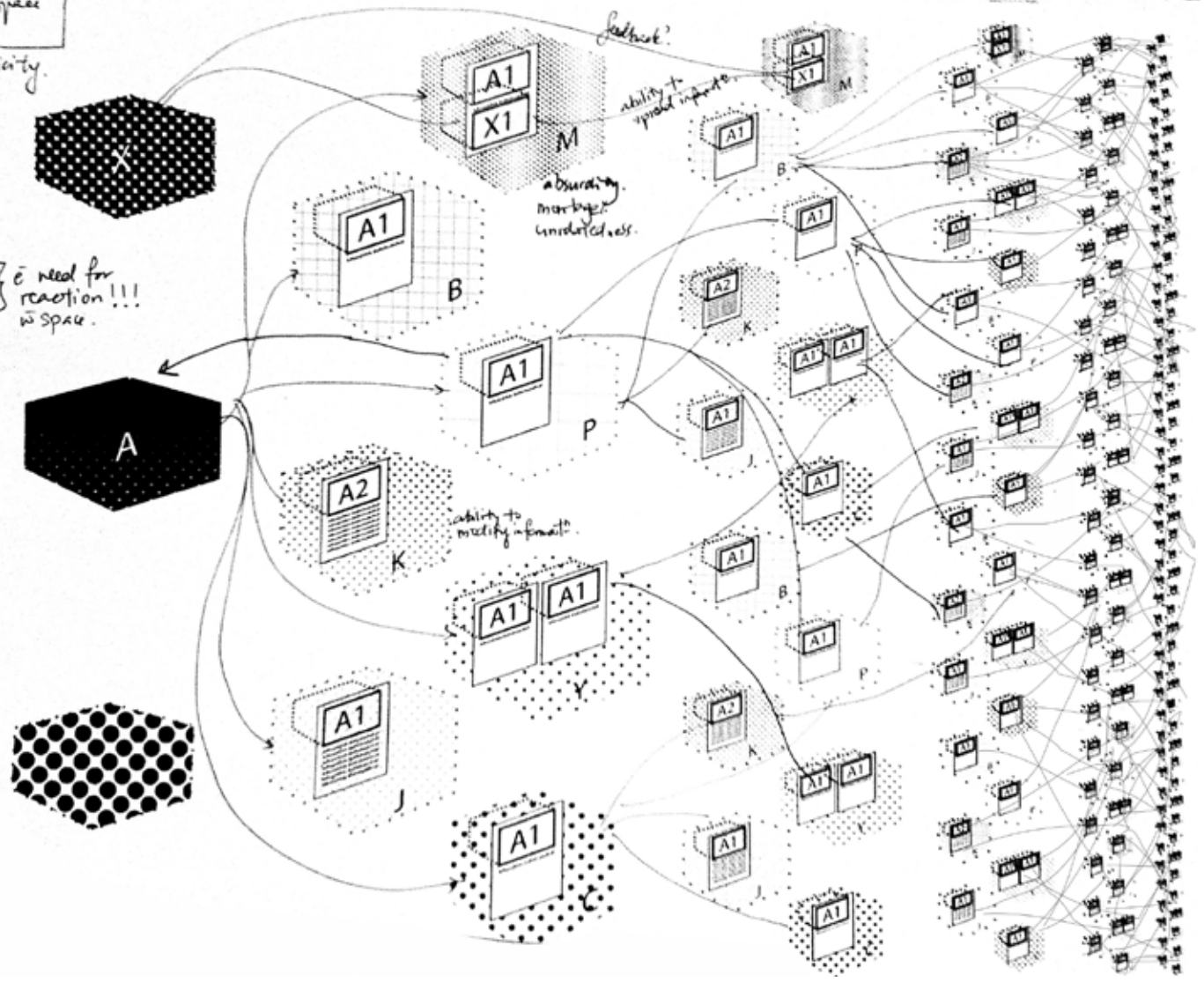
push-cart businesses along boulevard

selling corn, umbrella, phone cards & jewellery by roadside

constructing without license on public land

Real & Virtual Space in Social Media

- Effect of multiplicity.
- Knowledge & action are different.
- mesh of text, photo, video, art, commercial.
- Dissemination vs reaction. } need for reaction!!! in space.
- There are always real + virtual spaces in each situation.



[PROJECTING URBAN REVOLUTION] The Accumulation of Resistances @ Tirana V.4

Programs	Power (Act)	Resistance (React)	Social (Media) Tools	Architectural Tools
<p>Train station (existing, everyday, momentous)</p> <ol style="list-style-type: none"> 1. 6x250m platforms 2. Ticket machines 3. Baggage lockers 4. Virtual 'information counters' 	<p>Efficiency Linearity City Image</p>	<p>Slowing down Multiplicity Peoples' Image</p>	<p>Personalisation</p> <p>Mash up ¹ (Arbitrarily structured hybrid content according to personalized experience or desire)</p>	<p>Arbitrary circulation</p> <ol style="list-style-type: none"> 1. Multiple choices of routes to take for users 2. Breaking linearity of axis 3. Breaking single viewpoint of axis 4. Spatial tactics against anti-resistances 5. App-oriented spaces 6. Surface-oriented spaces 7. Break away from single axial and scalar orientation
<p>Track / Platform</p>	<p>Mono-functional</p>	<p>Multi-functional</p>		
<p>LRT station (new, everyday, momentous)</p> <ol style="list-style-type: none"> 1. 2x50m platforms 2. Ticket machines 3. Virtual 'information counters' 	<p>Train + shops = train station Unoccupied during off-peak or midnight: dangerous spaces to be closed off</p> <p>Systems necessary for flow of capital</p>	<p>Add housing (24hr program) Add night life (theatre performances, restaurants, bars)</p> <p>Physical Inflow of civilians to participate in resistance</p>	<p>Physical participation</p> <p>Physical participation</p>	<p><i>Choice of program</i></p> <p><i>Choice of program</i></p>
<p>Informal activities (existing, everyday)</p> <ol style="list-style-type: none"> 1. market 2. housing 	<p>Corporate Businesses</p>	<p>Micro Businesses</p>	<p>Archive</p> <p>Permalink ² (What is archived is never lost – a permanent link made to the previous version)</p> <p>Interface</p> <p>Application Programming Interface (API)³ (links are made possible due to generic programming, e.g. C++, Javascript)</p>	<p>Spatial Connection to Bazaar</p> <p>Retain existing train station as spatial connection of past power</p> <p>Extend spaces for informal activities as interface between existing and new.</p>

¹ [Mashup](#) - A content mashup contains multiple types of media drawn from pre-existing sources to create a new work. Digital mashups allow individuals or businesses to create new pieces of content by combining multiple online content sources. The main characteristics of a mashup are combination, visualization, and aggregation. It is important to make existing data more useful, for personal and professional use.

² [Permalink](#) - A permalink is an address or URL of a particular post within a blog or website.

<p>Art Spaces (new, everyday, momentous)</p> <ol style="list-style-type: none"> 1. Workstations for all types of artists: painting, sculpture, installation, new media, etc. 2. Gallery by the train platforms 3. Gallery with mobile walls 4. Gallery with walls, natural lighting, sheltered 5. Gallery Black Box without seats 6. Gallery Black Box with seats 	<p>Censorship of self-expression</p> <p>Rental, production costs and livelihood issues for artists</p>	<p>Artists' Co-operative: Live & work in territory</p> <p>Lower costs: Merge circulation with exhibition: Go digital / mobile / display at facades / entry fees for some performances</p>	<p>Physical & Virtual participation</p> <p>EventBrite⁴</p> <p>Vimeo</p>	<p><i>Choice of program</i></p> <p>Gallery spaces integrated with circulation for travellers and residents.</p>
<p>Housing (existing, new, everyday)</p> <ol style="list-style-type: none"> 1. Self-built housing 2. Subsidised housing 3. Middle-range housing 4. Housing for officials? 5. Housing for tourists? 	<p>Classification of identities of people with scale of spaces they live in, wealth, class, etc.</p>	<p>Classification of identities</p>	<p>Hashtag⁵ (standardisation of code for different systems as equalisation of identities)</p>	<p>Codification of Spaces through surfaces</p> <p>Tools like scale, order, colour, structural expression, texture, sound, are not in servitude to the variety of historical or representative meanings. (e.g. big scale is not equal to power anymore)</p> <p>Wall / Surface as key description of territory</p>
<p>New Media Programs: Social News Website Company (new, everyday)</p> <ol style="list-style-type: none"> 1. Workstations 2. Virtual 'reporting interfaces' 	<p>Traditional broadcasting stations</p>	<p>News incorporating viewers' reactions</p> <p>Virtual world evaluation of online news done by various sources of news stations</p>	<p>Virtualisation of Moral Sphere</p> <p>Digg⁶</p>	<p><i>Choice of program</i></p>
<p>New Media Programs: Online Shops (new, everyday)</p> <ol style="list-style-type: none"> 1. Interfaces 2. Workstations 3. Storage 	<p>Cooperation businesses</p> <p>Start-up include rental space costs</p>	<p>Start-up and expand business online</p>	<p>Zoho⁷</p> <p>Craigslist⁸</p> <p>Disqus⁹</p> <p>AddThis</p>	<p><i>Choice of program</i></p> <p>Scale or of shop is not equivalent to type or quantity of objects sold.</p> <p>Flattening of shop front with QR</p>

³ [Application Programming Interface \(API\)](#) - An API is a documented interface that allows one software application to interact with another application. An example of this is the [Twitter API](#).

⁴ [Eventbrite](#) - Eventbrite is a provider of online event management and ticketing services. Eventbrite is free if your event is free. If you sell tickets to your event, Eventbrite collects a fee per ticket.

⁵ [Hashtag](#) - A hashtag is a tag used on the social network Twitter as a way to annotate a message. A hashtag is a word or phrase preceded by a "#." Example: #yourhashtag. Hashtags are commonly used to show that a tweet, a Twitter message, is related to an event or conference, online or offline.

⁶ [Digg](#) - Digg is a social news website that allows members to submit and vote for articles. Articles with the most votes appear on the homepage of the site and subsequently are seen by the largest portion of the site's membership, as well as other visitors.

			QR Code	code sufficient.
<p>New Media Programs: Cyberactivism (new, everyday, momentous, virtual)</p> <ol style="list-style-type: none"> 1. Interfaces 2. Free wifi shops 	<p>Marginalisation of non-capitalists</p>	<p>Cyber-activism</p> <p>Generate virtual consensus</p>	<p>Avatar¹⁰</p> <p>Comment</p> <p>Share</p> <p>Friends¹¹</p> <p>Connections¹²</p> <p>Chats / Forums¹³</p>	<p>Anonymity of form to program</p> <p>Freedom of expression in space by users – spaces broken down for small-scale appropriation away from everyday policing</p>
<p>New Media Programs: Internet Censorship Circumvention</p> <ol style="list-style-type: none"> 1. Workstations 2. Surveillance System 	<p>Government Internet Censorship / Firewall</p> <p>Arrestment of hackers</p>	<p>Internet Censorship</p> <p>Circumvention</p>	<p>Collective Intelligence¹⁴</p>	<p>Multiple points of control of territory's security / thresholds</p>
<p>Plaza</p> <ol style="list-style-type: none"> 1. Start off for march-in to axis 	<p>Anti-riot policing tactics</p>	<p>Protective spaces / mechanisms for protestors</p>	<p>Avatar</p> <p>Qik¹⁵</p>	<p>The hidden identity: Restriction of viewpoints that give totality to entire territory.</p>

⁷ [Zoho](#) – ZOH0: is a suite of online web applications geared toward business productivity and collaboration.

⁸ [Craigslist](#) - Craigslist is a popular online commerce site in which users sell a variety of goods and services to other users. The service has been credited for causing the reduction of classified advertising in newspapers across the United States.

⁹ [Disqus](#) - Disqus is a comment system and moderation tool for your site. This service lets you add next-gen community management and social web integration to any site on any platform

¹⁰ [Avatar](#) - An avatar is an image or username that represents a person online within forums and social networks.

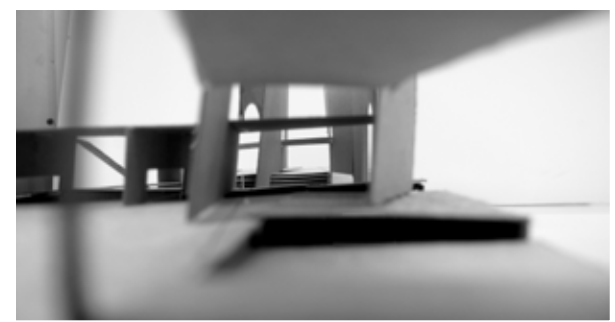
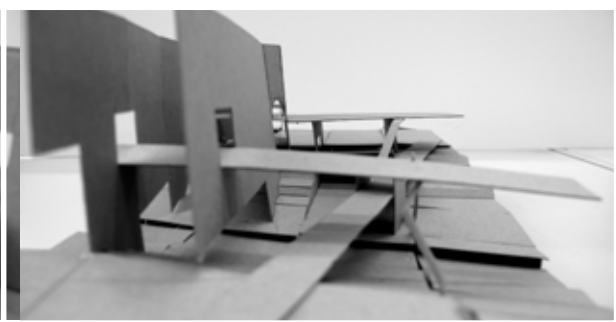
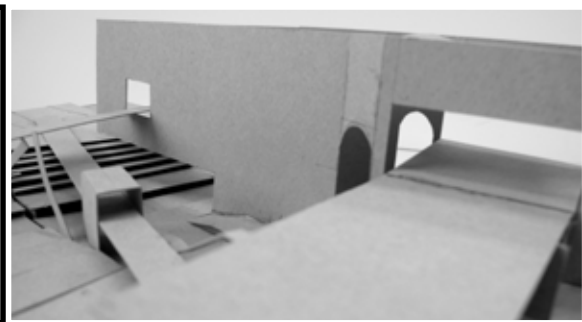
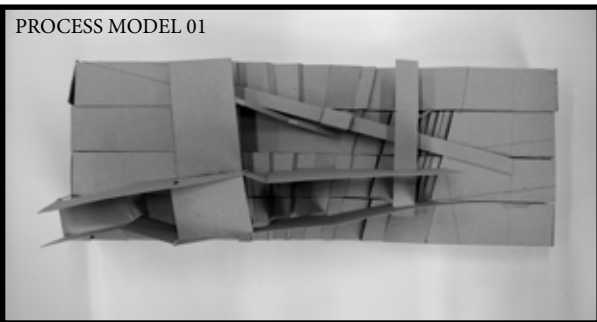
¹¹ [Friends](#) - No, not your pals you play poker with on the weekends. We're talking Facebook friends. These are individuals you consider to be friendly enough with you to see your Facebook profile and engage with you.

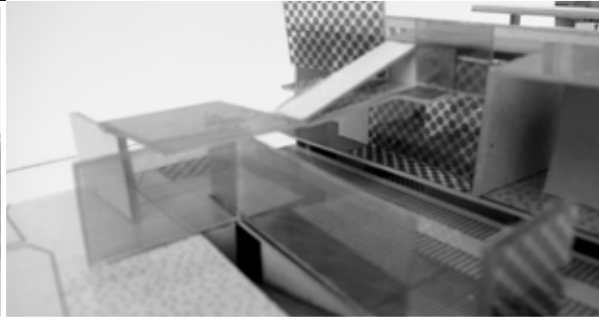
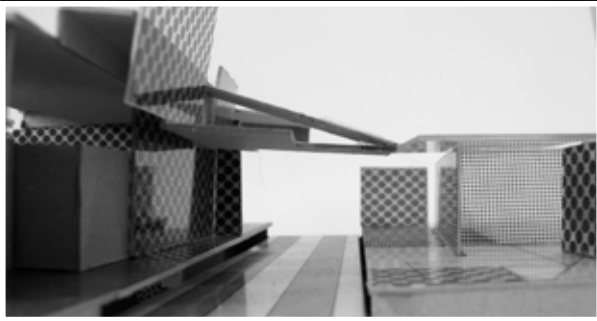
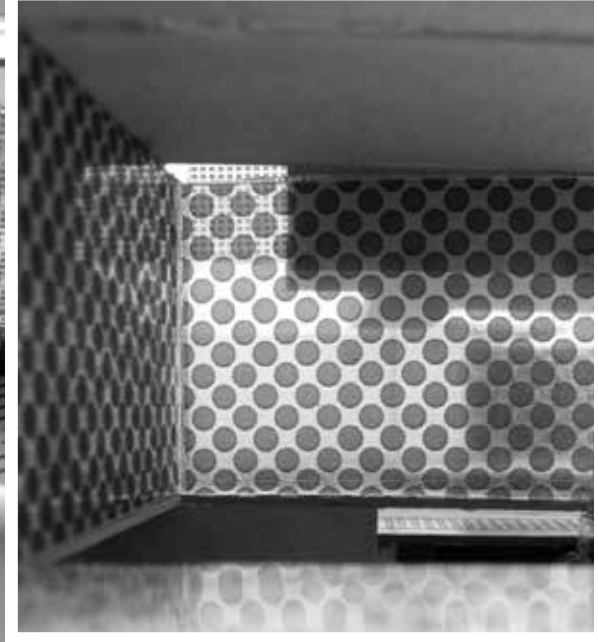
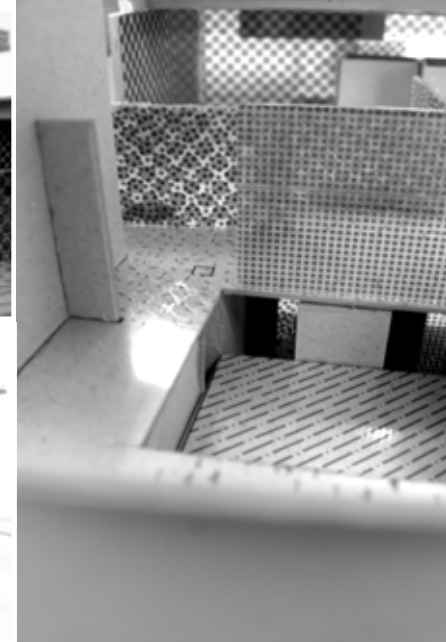
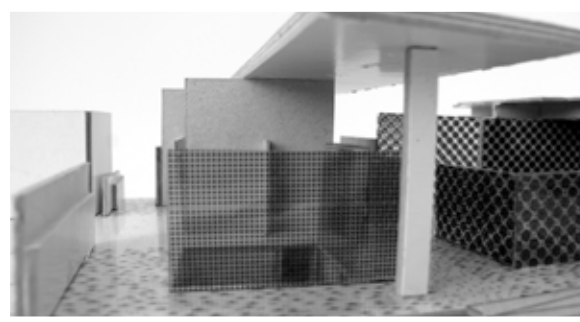
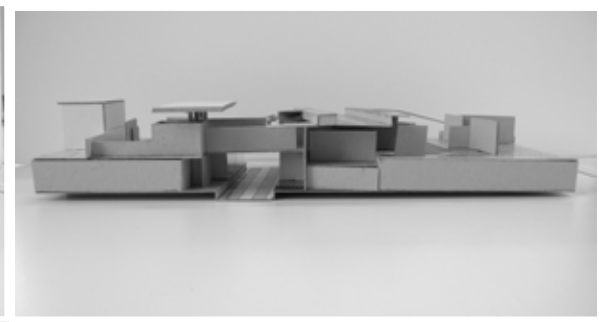
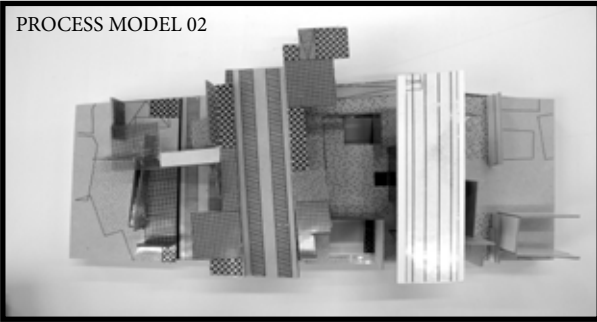
¹² [Connections](#) - The LinkedIn equivalent of a Facebook 'friend' is a 'connection.' Because LinkedIn is a social networking site, the people you are *connecting* with are not necessarily people you are friends with, but rather you met in brief, heard speak, or know through another connection.

¹³ [Forums](#) - Also known as a message board, a forum is an online discussion site. It originated as the modern equivalent of a traditional bulletin board, and a technological evolution of the dialup bulletin board system.

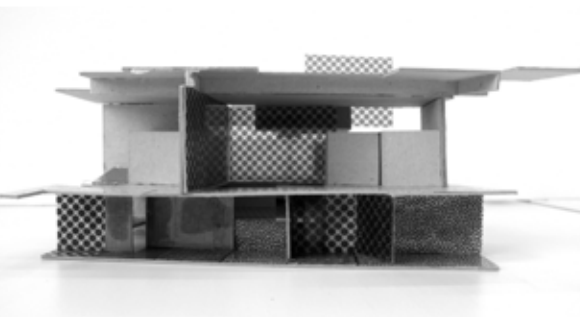
¹⁴ [Collective Intelligence](#) - Collective intelligence is a shared or group intelligence that emerges from the collaboration and competition of many individuals and appears in consensus decision-making in social networks.

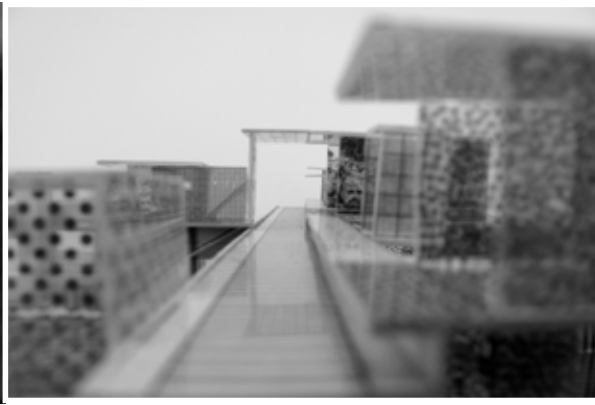
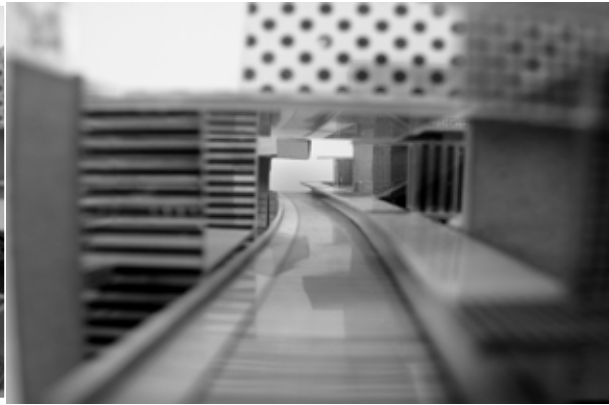
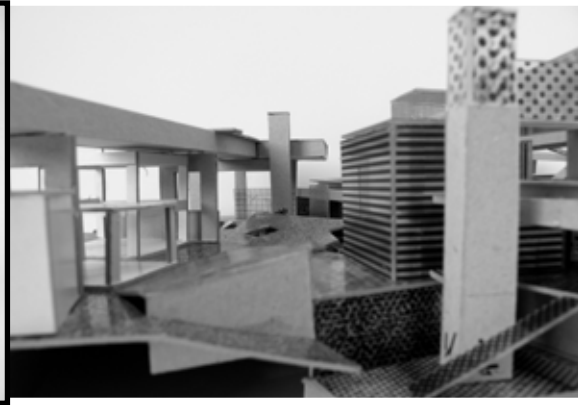
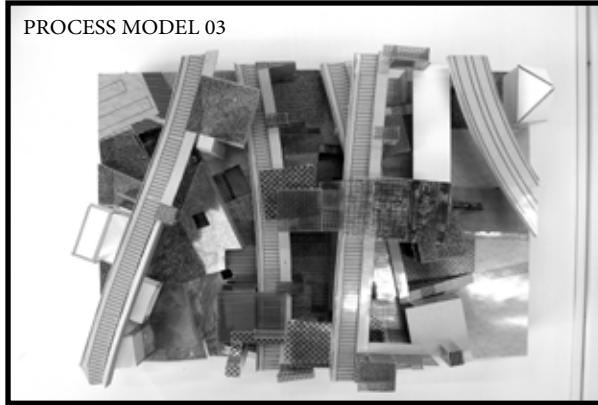
¹⁵ [Qik](#) - Qik is an online video streaming service that lets users stream video live from their mobile phones to the web.



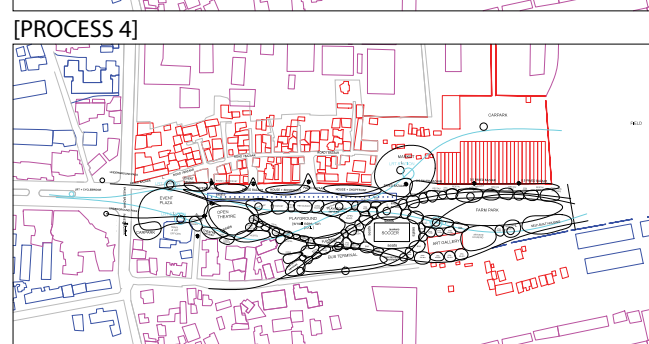
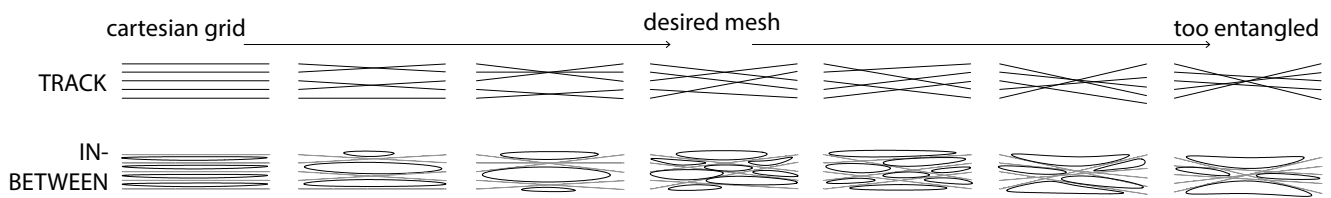


process mo

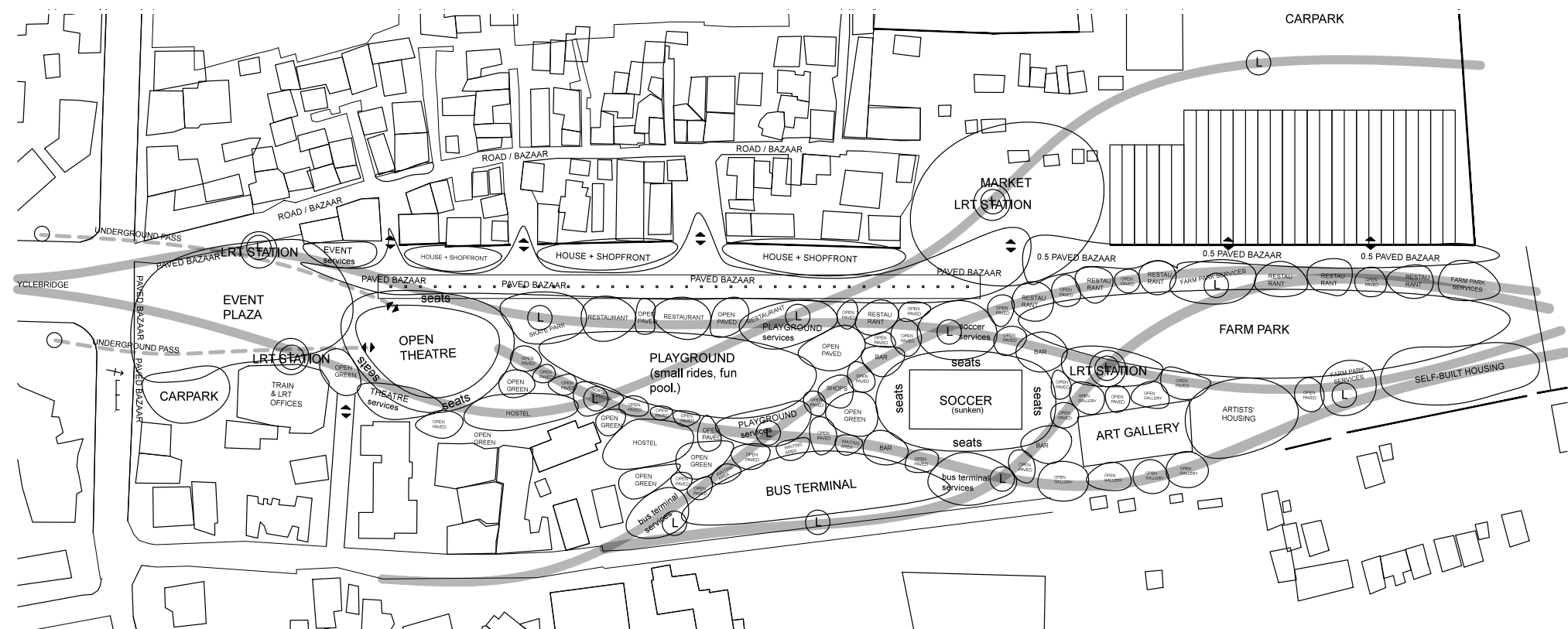




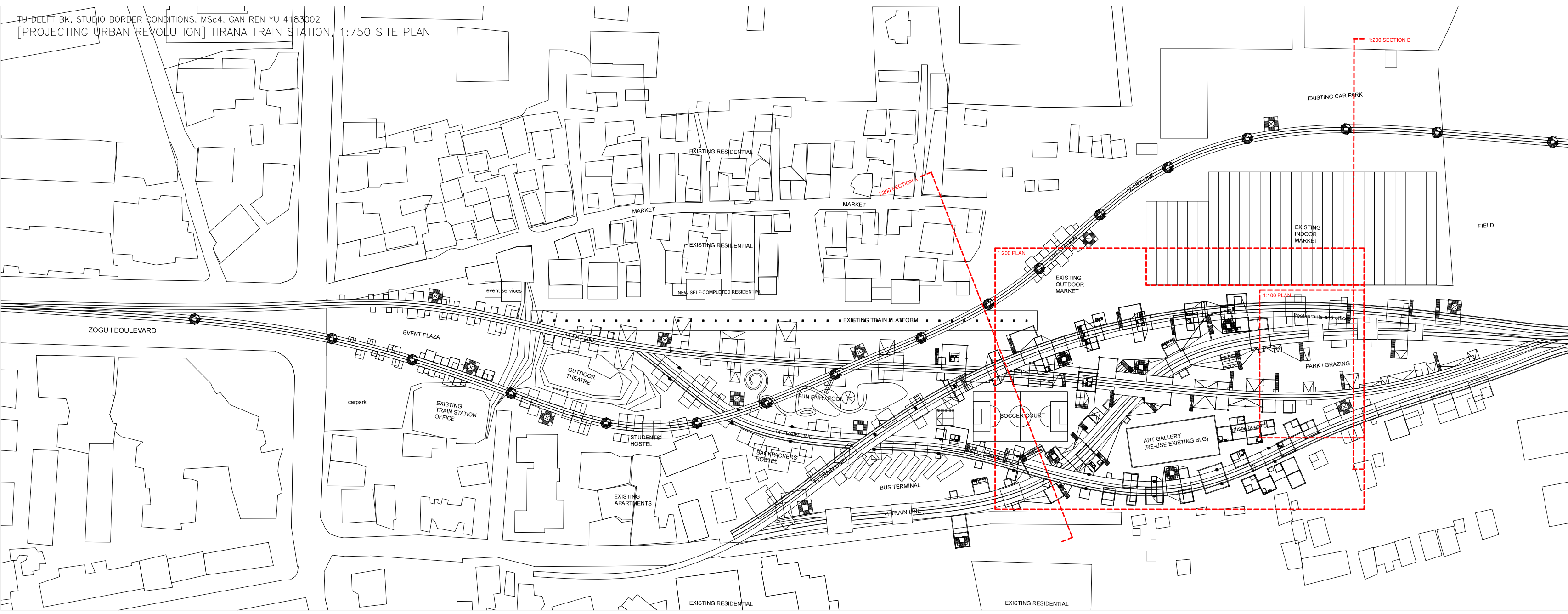
process model 3



NEW POWER OLD POWER EXISTING RESISTANCE INTERVENTION



TU DELFT BK, STUDIO BORDER CONDITIONS, MSc4, GAN REN YU 4183002
[PROJECTING URBAN REVOLUTION] TIRANA TRAIN STATION, 1:750 SITE PLAN



ZOGU I BOULEVARD

EVENT PLAZA

OUTDOOR THEATRE

EXISTING TRAIN STATION OFFICE

STUDENTS' HOSTEL

EXISTING APARTMENTS

EXISTING RESIDENTIAL

EXISTING RESIDENTIAL

EXISTING RESIDENTIAL

NEW SELF-COMPLETED RESIDENTIAL

MARKET

MARKET

FUN FAIR POOL

BACKPACKERS' HOSTEL

BUS TERMINAL

SOCCER COURT

EXISTING RESIDENTIAL

EXISTING OUTDOOR MARKET

ART GALLERY (RE-USE EXISTING BLDG)

EXISTING INDOOR MARKET

PARK / GRAZING

EXISTING CAR PARK

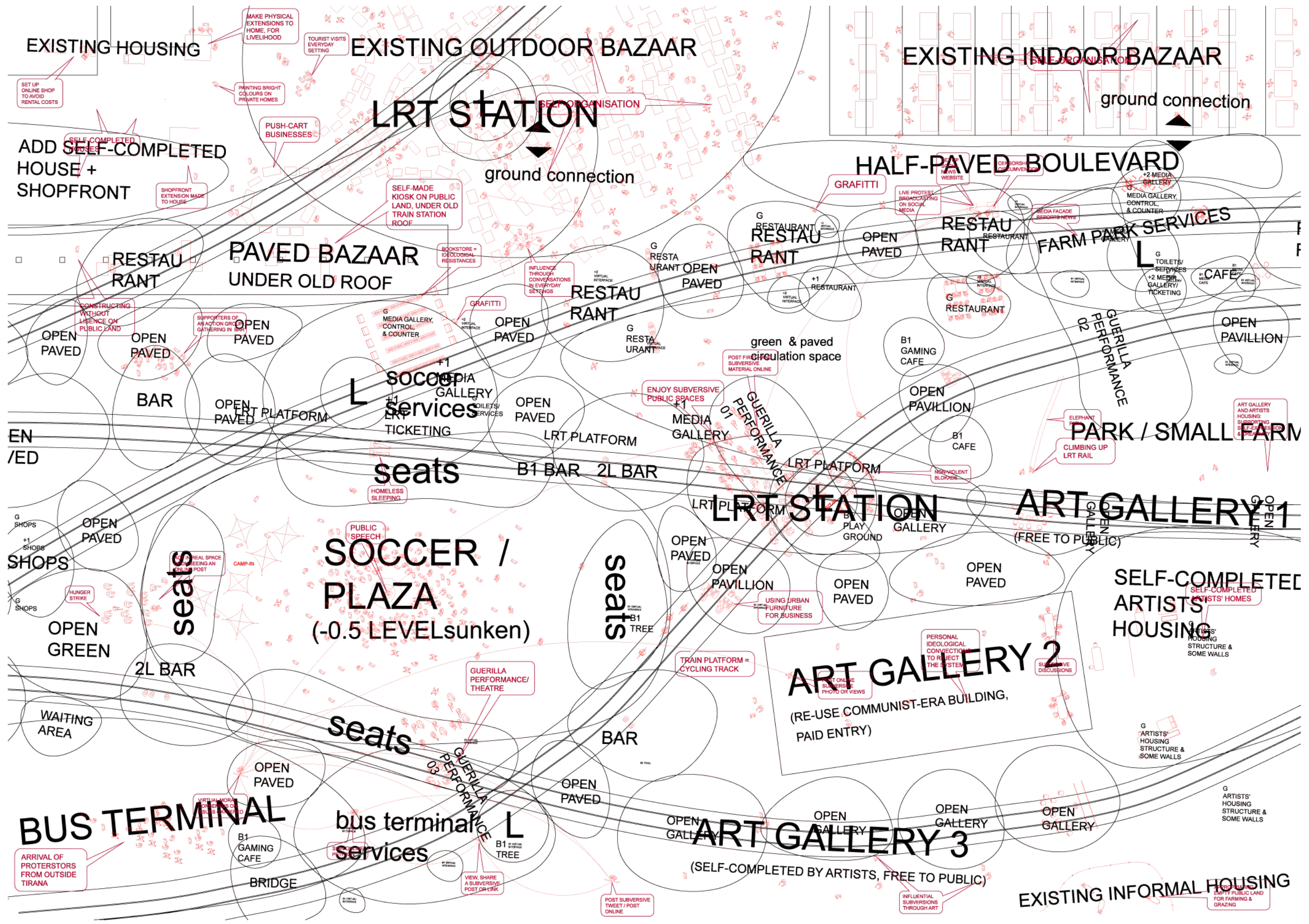
FIELD

1:200 SECTION A

1:200 PLAN

1:100 PLAN

1:200 SECTION B



EXISTING HOUSING

EXISTING OUTDOOR BAZAAR

EXISTING INDOOR BAZAAR

LRT STATION

ground connection

ADD SELF-COMPLETED HOUSE + SHOPFRONT

HALF-PAVED BOULEVARD

PAVED BAZAAR UNDER OLD ROOF

RESTAURANT

RESTAURANT

RESTAURANT

FARM PARK SERVICES

SOCIAL SERVICES

seats

LRT STATION

ART GALLERY 1

SOCCER / PLAZA (-0.5 LEVEL sunken)

seats

ART GALLERY 2

SELF-COMPLETED ARTISTS' HOUSING

BUS TERMINAL

bus terminal services

ART GALLERY 3

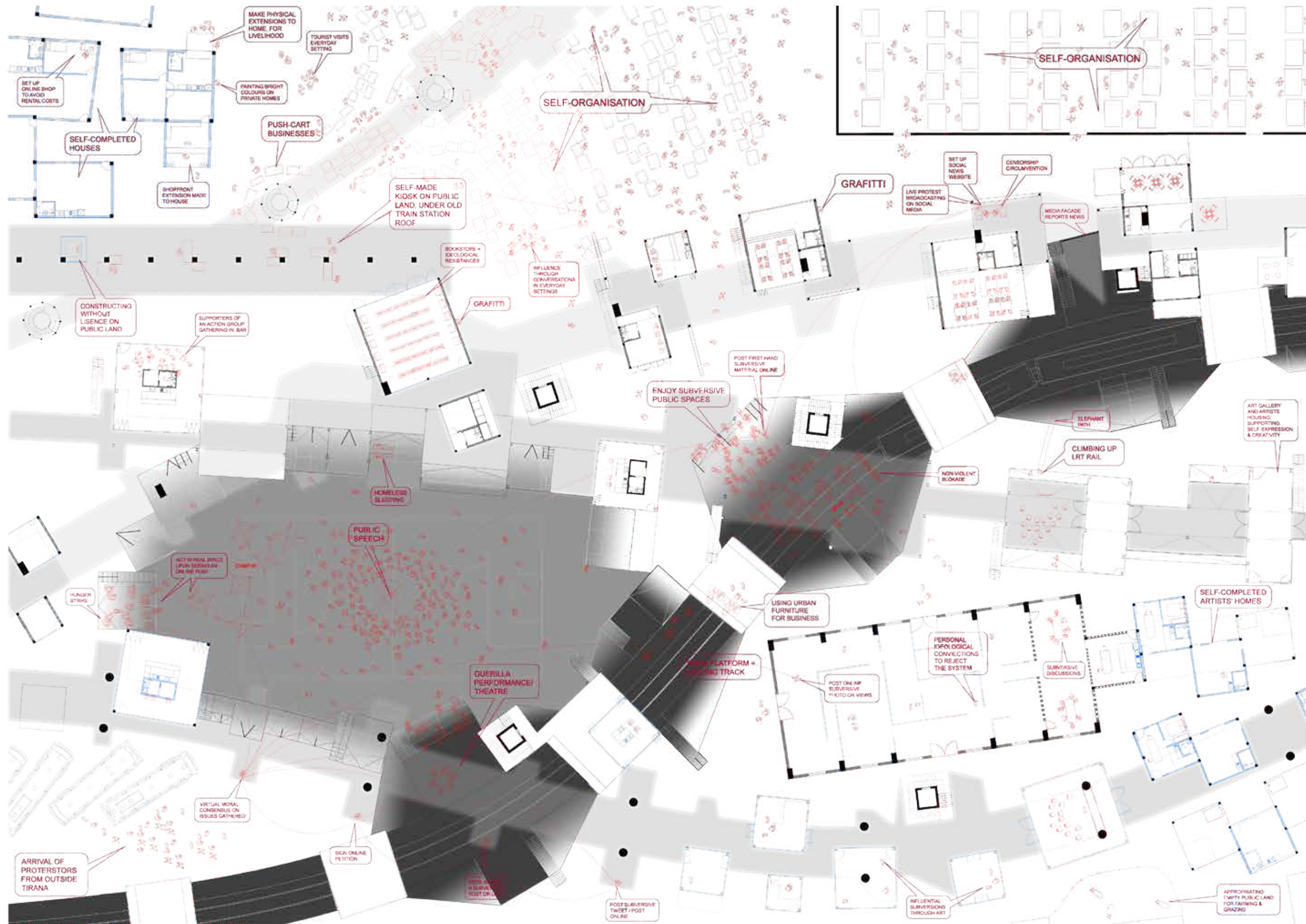
EXISTING INFORMAL HOUSING

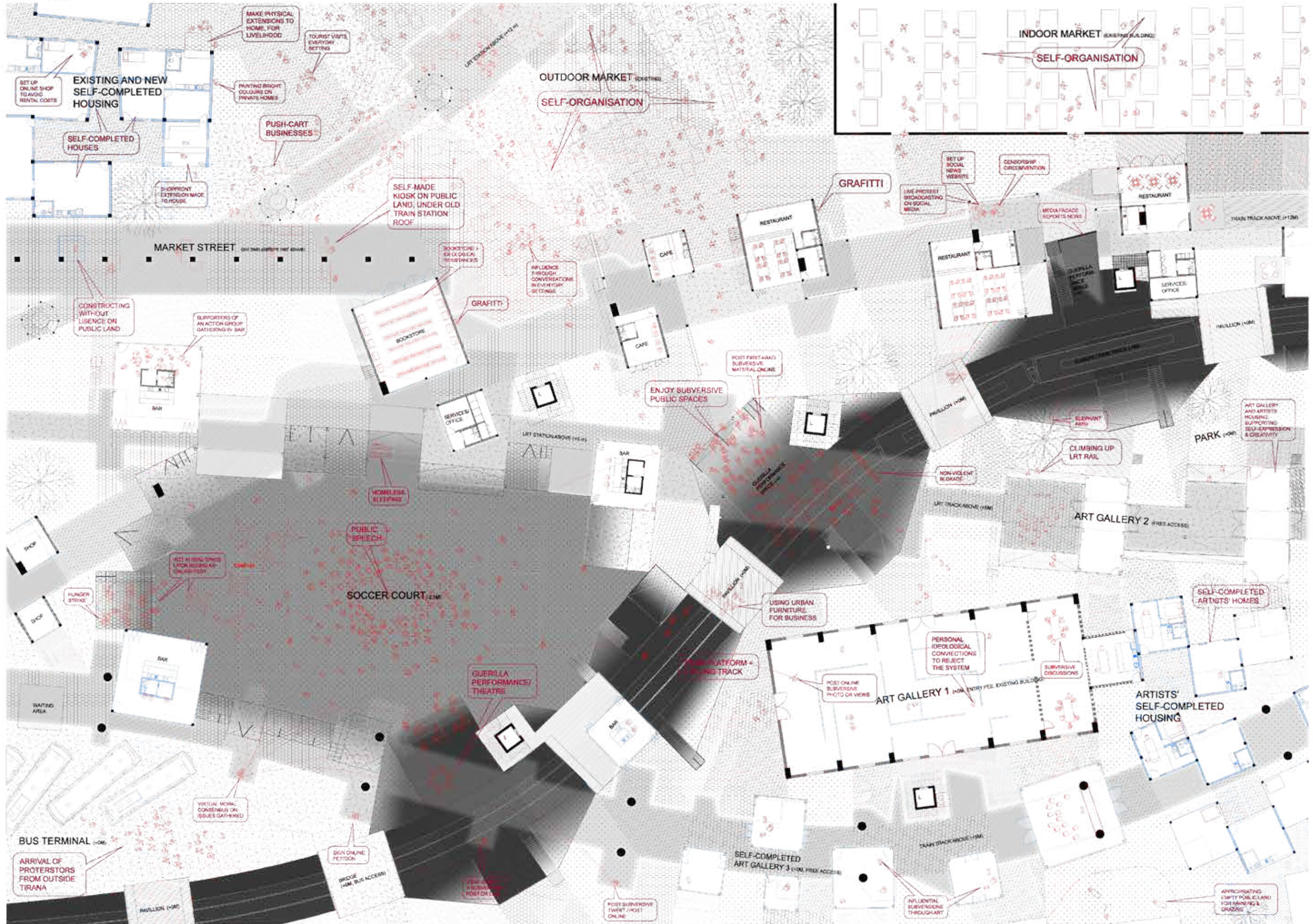
ARRIVAL OF PROTESTORS FROM OUTSIDE TIRANA

BRIDGE

(SELF-COMPLETED BY ARTISTS, FREE TO PUBLIC)

EMPTY PUBLIC LAND FOR FARMING & GRAZING





BACKPACKER

GROUND PLAN 1:200
N

...walked down the bazaar and found the open market and some restaurants, had lunch and moved towards the art gallery which has free access, then through the back alleyhood the indoor market, to do some photo-taking, before walking back the old bazaar.

gallery visitor

...who lives in the periphery took the LRT to the bazaar, did some shopping at the street market before strolling towards the park. She saw a performance at the event space and stayed for a while. Then heads towards the free public galleries below the LRT track before going to the bigger gallery to meet a friend for dinner, then took

graffiti artist

... has been eyeing the many blank walls at the train platforms. He preferred places where his work can be seen, especially from the city.

house-owner

...decides to make some extra cash by setting up stalls on Sundays just outside her house. She also likes to walk to the park and soccer court because it is less noisy and she can pass time by chatting to the shop-owners nearby.

PERSON ON DAY-OFF

...who lives in the city centre comes here by LRT, saw the media gallery, went down to the soccer field to meet his friends for a match. Went to the bar after the match and took a bus home at night.

bus driver

...is tired after an 8 hour drive from Skopje. He bought some drinks from the shops, took a short nap at the soccer park before getting down the basement track.

SELLER

...now that there is a new competition, he would sell his goods elsewhere at the privatized bazaar near the city centre through CONTEMPORARY INVENTORY SETTINGS.

TS STAFF

...who lives in the city centre also cycles to work at the media control station everyday. His job is to monitor parts of the security in the train platforms via CCTV, for announcements, advertise emergency messages on the media screens. Sometimes, he also allows people to use the media for their own event, especially when there are no trains running at night.

STUDENT

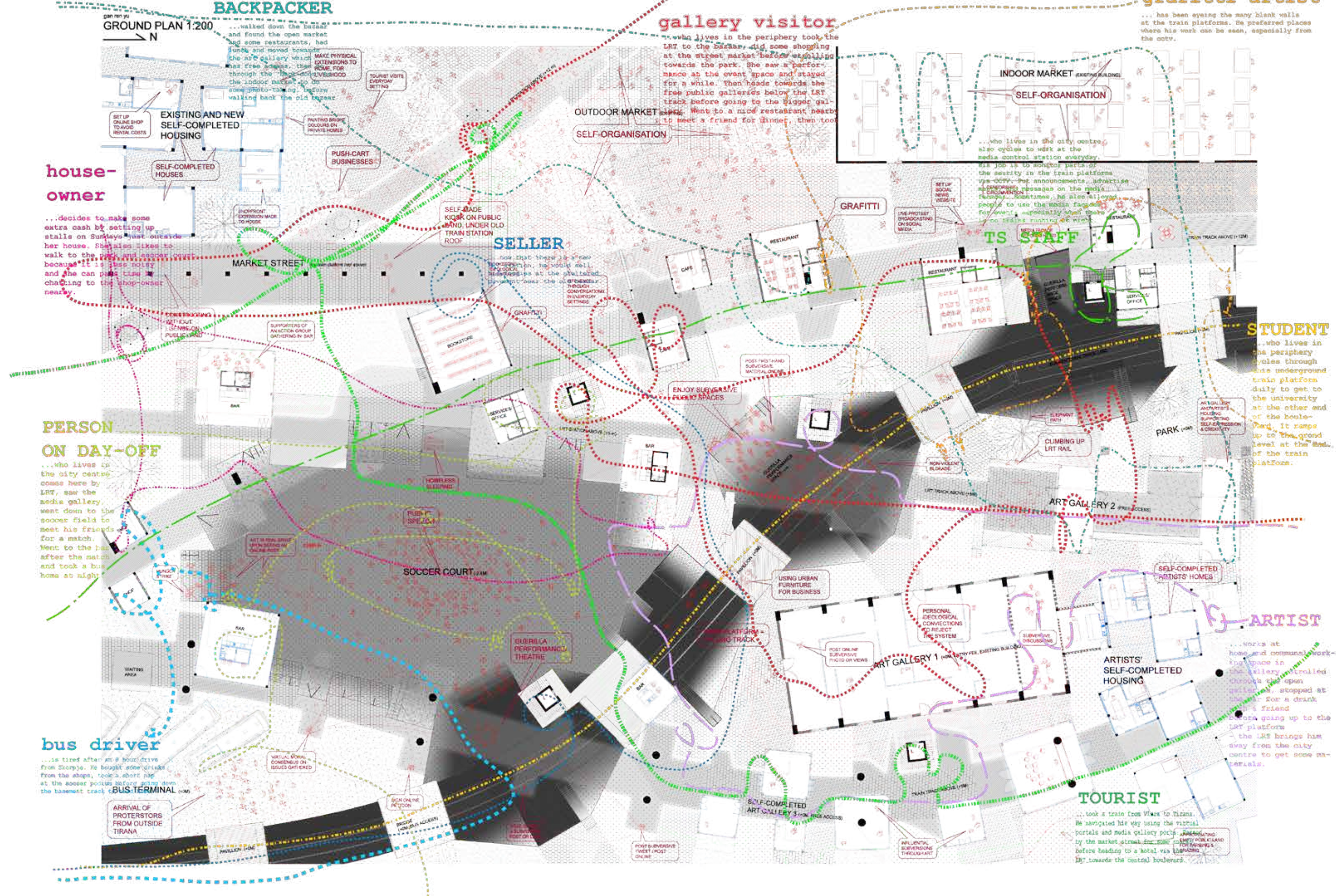
...who lives in the periphery cycles through this underground train platform daily to get to the university at the other end of the boulevard. It ramps up to the ground level at the end of the train platform.

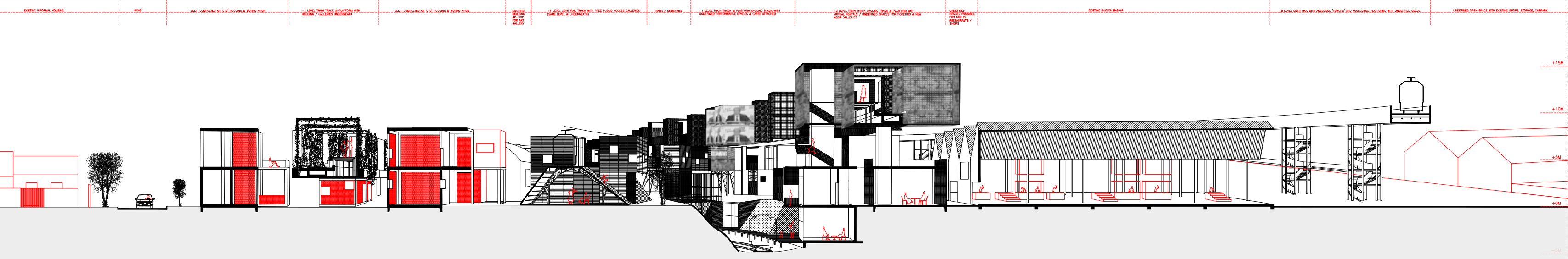
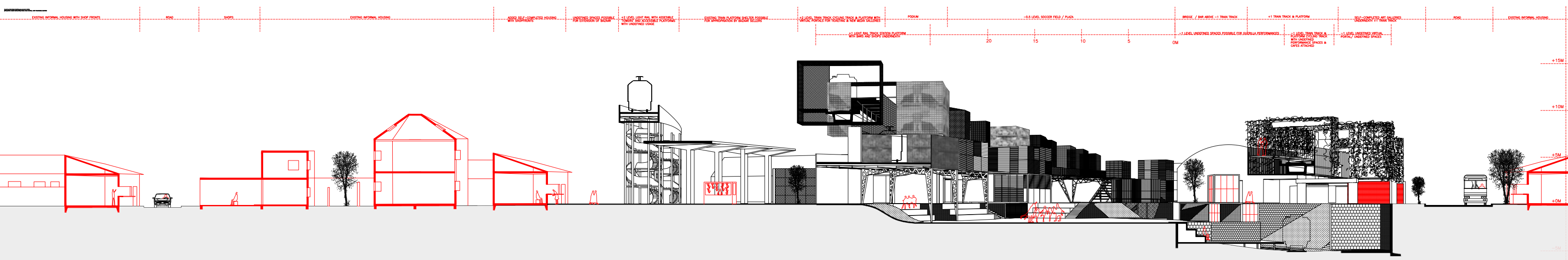
ARTIST

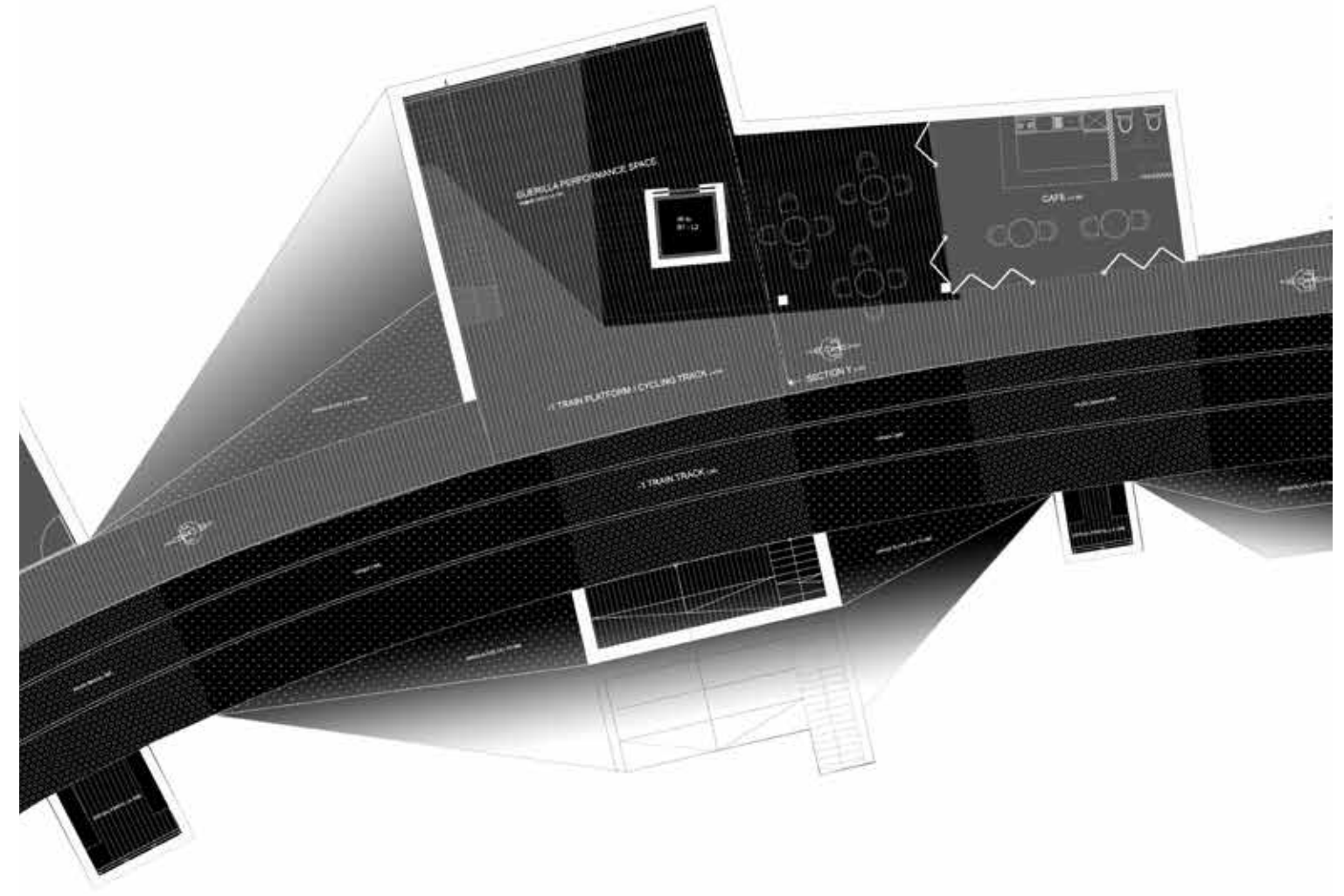
...works at home and communal work-space in the gallery strolled through the open gallery, stopped at the bar for a drink and a friend before going up to the LRT platform. The LRT brings him away from the city centre to get some materials.

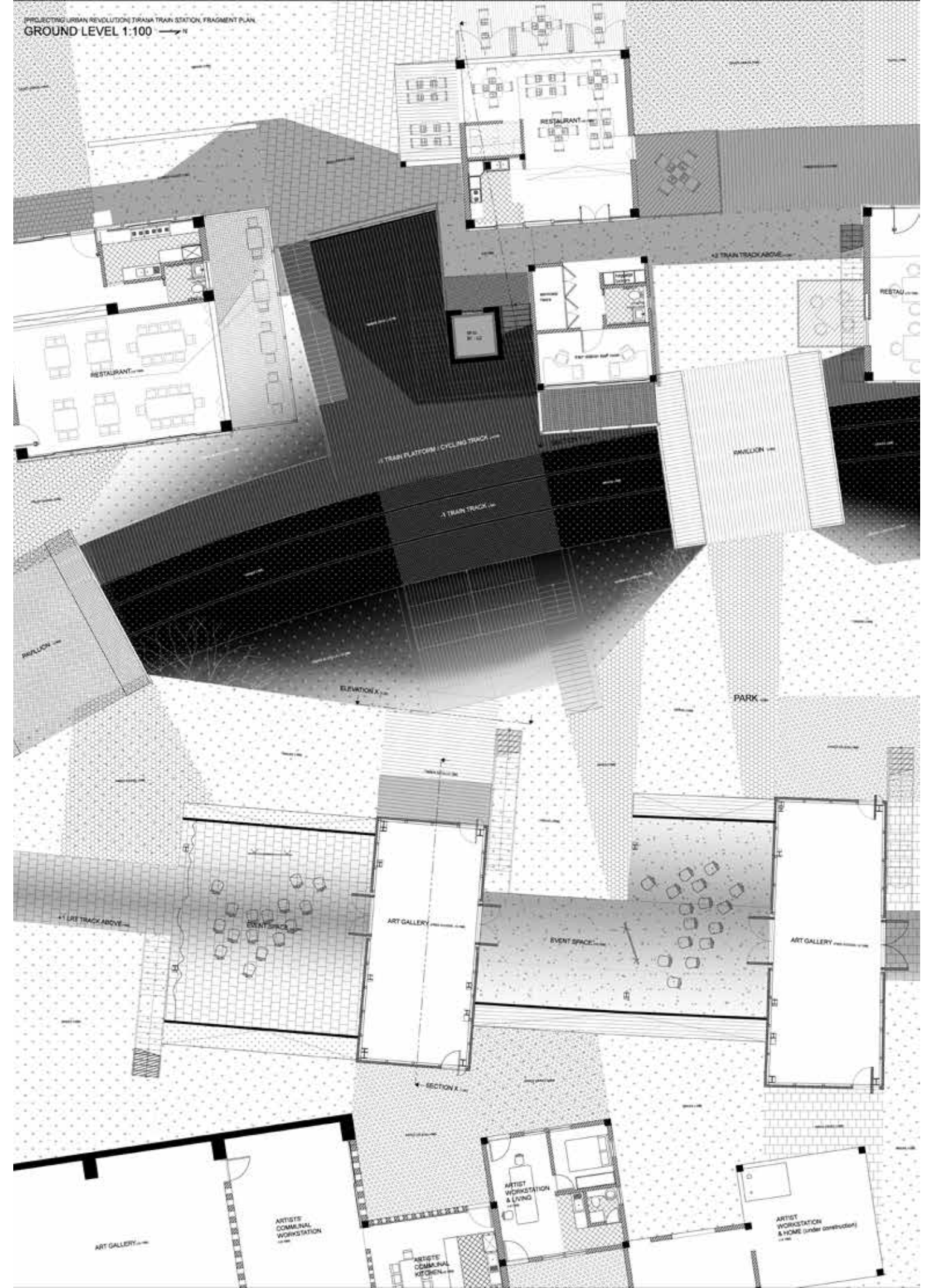
TOURIST

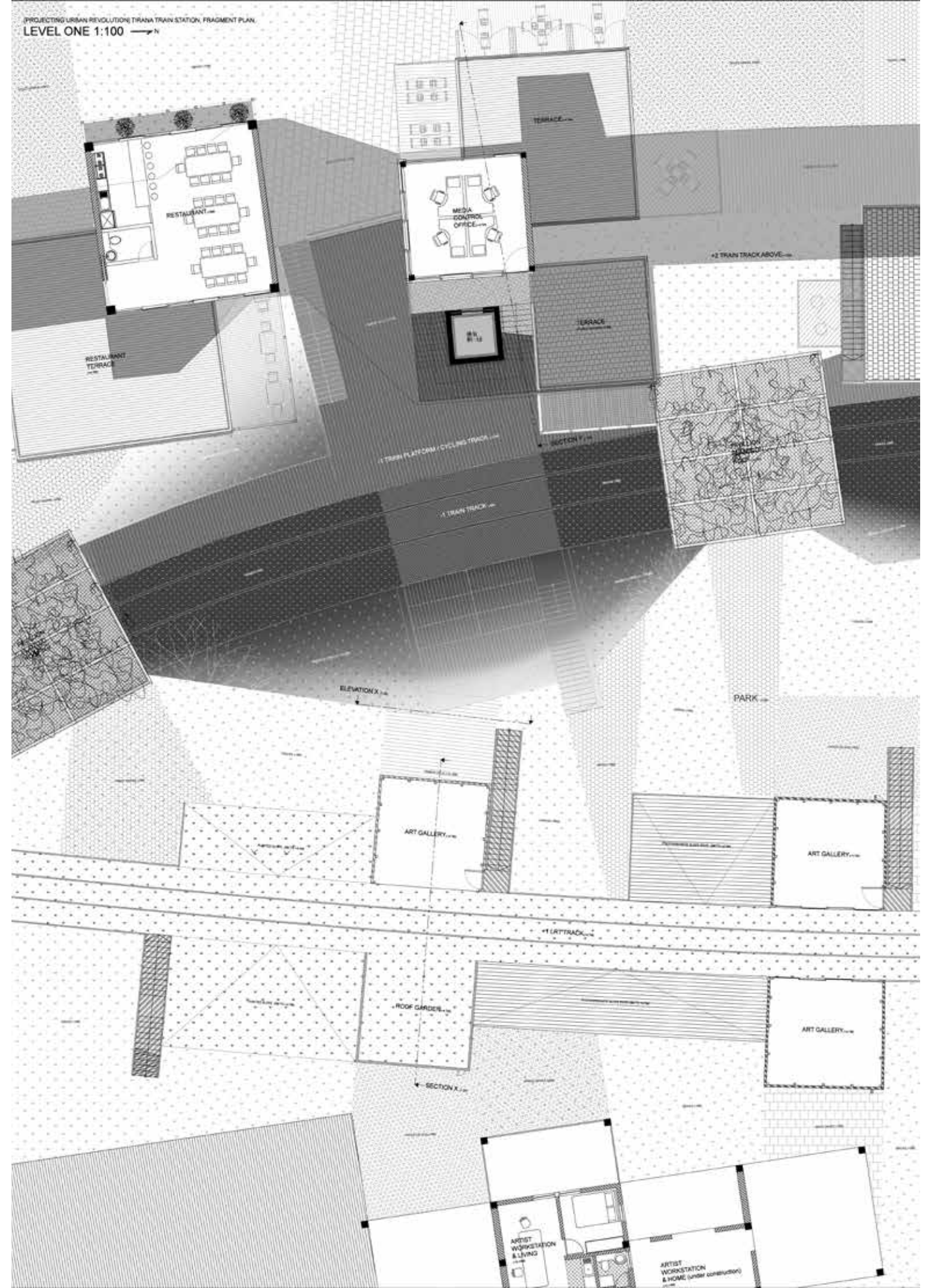
...took a train from Vitez to Tirana. He navigated his way using the virtual portals and media gallery ports advertised by the market street. He spent some time before heading to a hotel via the LRT towards the central boulevard.

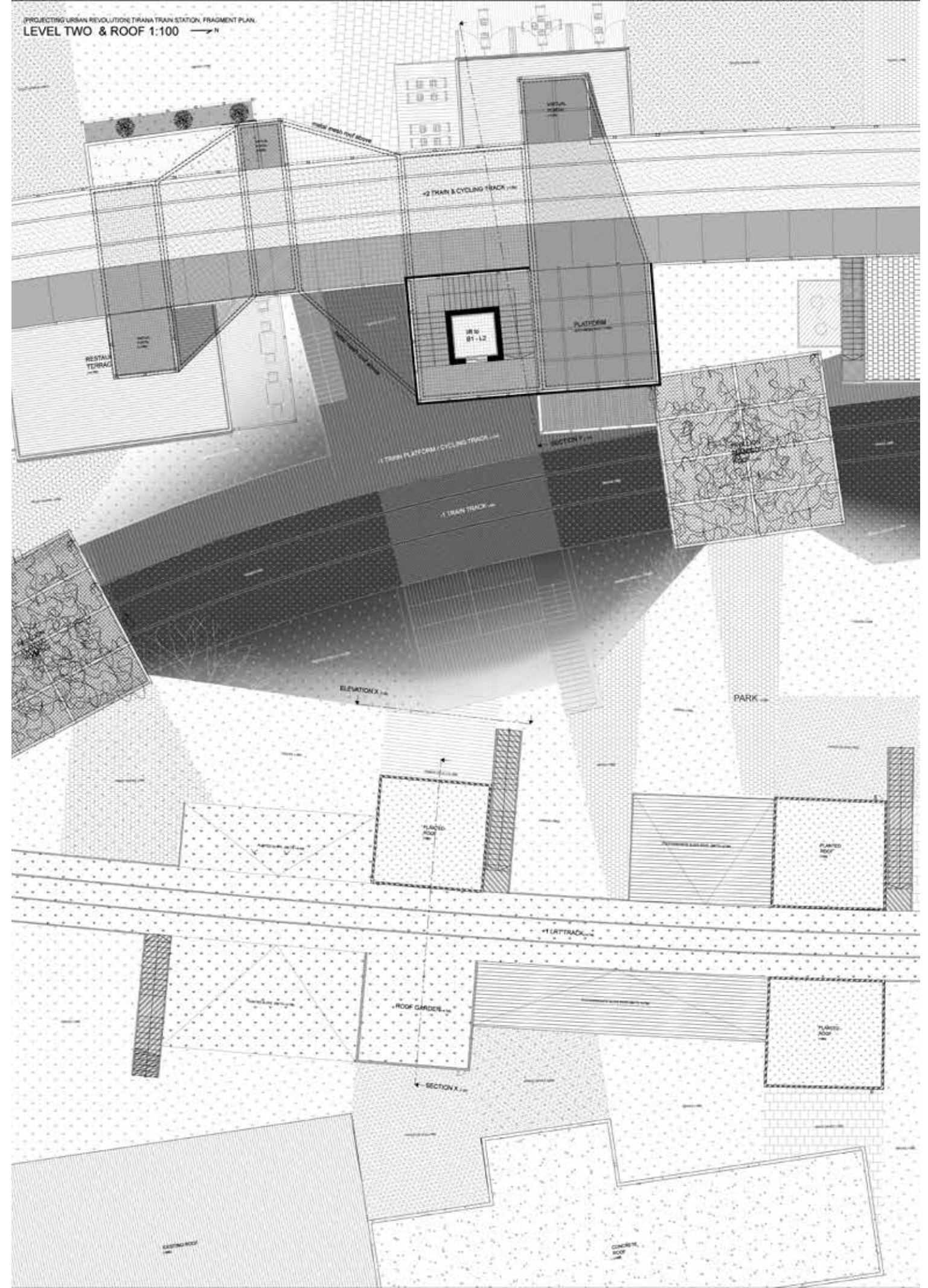




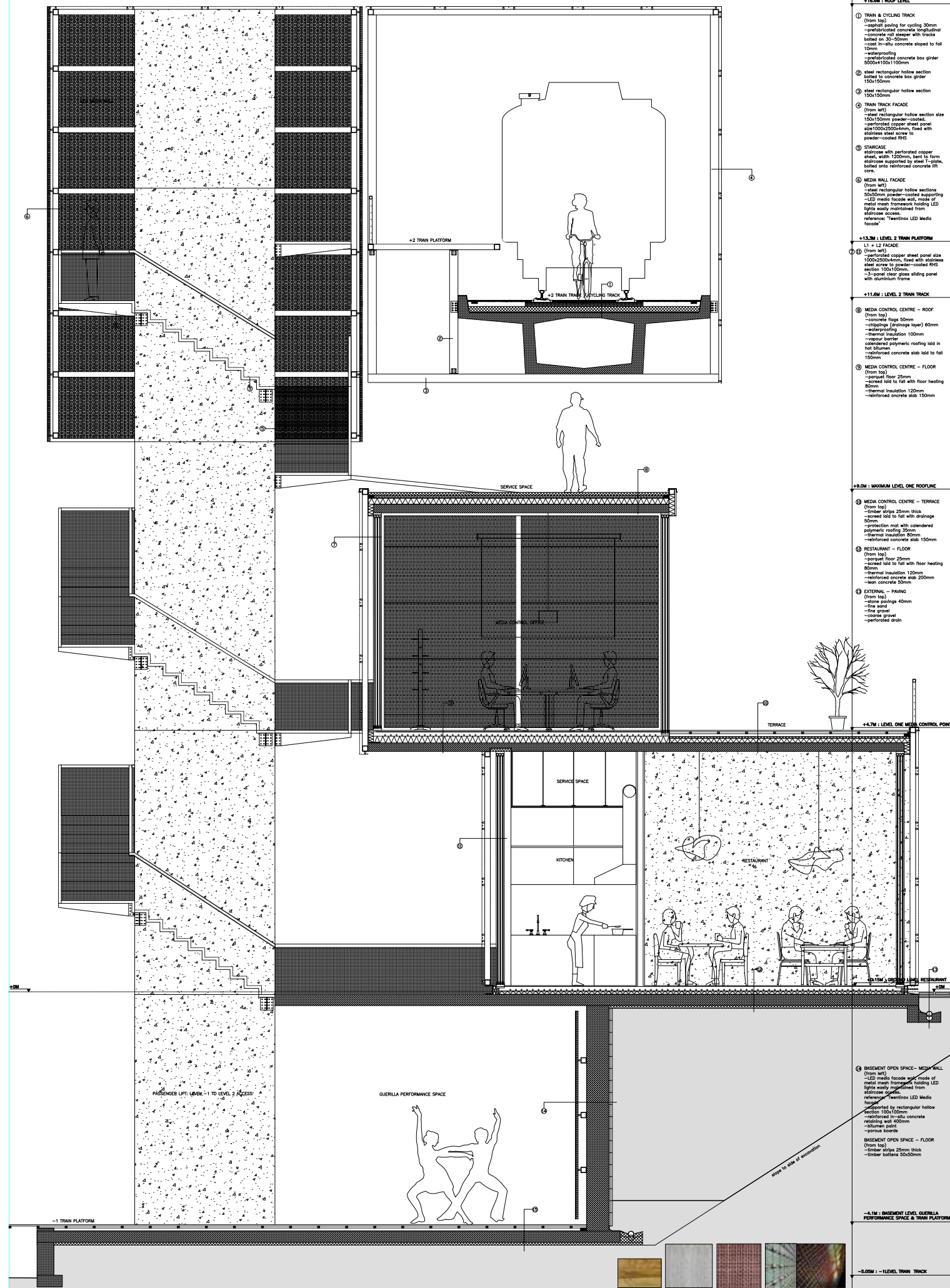








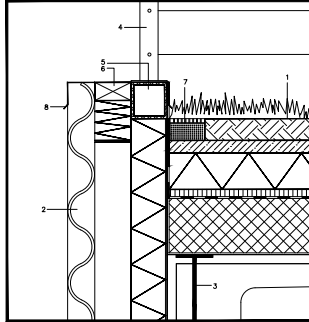
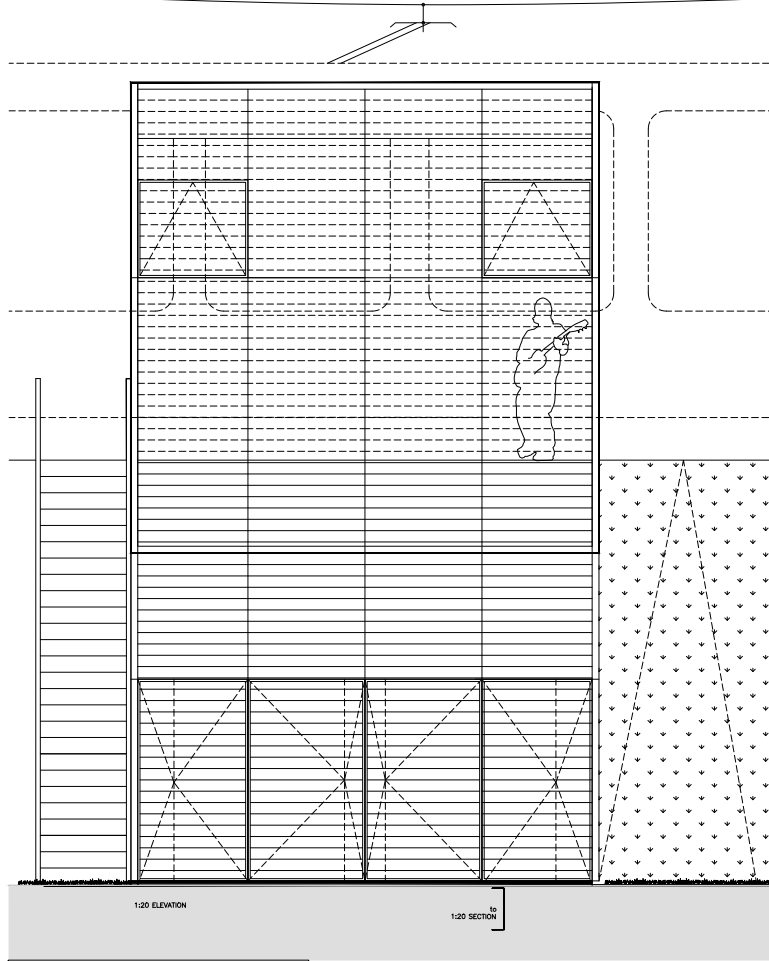
50 model image



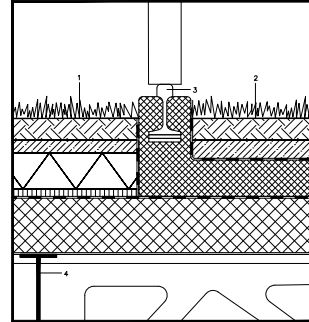
- ① **TRAIN & CYCLING TRACK** (from top)
 - impregnating for sealing 30mm
 - prefabricated concrete longitudinal
 - concrete roll sealer with tracks bolted on 30-50mm
 - cast in-situ concrete sloped to fall 10mm
 - waterproofing
 - prefabricated concrete box girder 500x110x1100mm
- ② **steel rectangular hollow section** bolted to concrete box girder 150x150mm
- ③ **steel rectangular hollow section** 150x150mm
- ④ **TRAIN TRACK FACADE** (from left)
 - steel rectangular hollow section size 150x150mm powder-coated
 - perforated copper sheet panel size 1000x500x4mm, fixed with stainless steel screws to powder-coated RHS
- ⑤ **STAIRCASE**
 - staircase with perforated copper sheet, width 1200mm, bent to form staircase supported by steel T-beam, bolted into reinforced concrete lift core.
- ⑥ **MEDIA WALL FACADE** (from left)
 - steel rectangular hollow section 50x50mm powder-coated supporting
 - LED media facade with mode of light emit (programmable) LED light emit (programmable) for silicone tubes.
 - reference: "ventrix LED media facade"
- ⑦ **L1 + L2 FACADE** (from left)
 - perforated copper sheet panel size 1000x500x4mm, fixed with stainless steel screws to powder-coated RHS section 150x150mm.
 - 3-panel clear glass sliding panel with aluminium frame
- ⑧ **MEDIA CONTROL CENTRE - ROOF** (from top)
 - concrete slabs 50mm
 - slope (drainage) 10%
 - waterproofing
 - thermal insulation 100mm
 - vapour barrier
 - concentric polymeric roofing led in fall 100mm
 - reinforced concrete slab led to fall 150mm
- ⑨ **MEDIA CONTROL CENTRE - FLOOR** (from top)
 - concrete floor 25mm
 - thermal insulation 120mm
 - thermal insulation 120mm
 - reinforced concrete slab 200mm
 - lean concrete 20mm
- ⑩ **MEDIA CONTROL CENTRE - TERRACE** (from top)
 - timber slats 25mm thick
 - concrete led to fall with drainage 50mm
 - protection mat with colored polymeric roofing 30mm
 - thermal insulation 80mm
 - reinforced concrete slab 150mm
- ⑪ **RESTAURANT - FLOOR** (from top)
 - concrete floor 25mm
 - thermal insulation 120mm
 - thermal insulation 120mm
 - reinforced concrete slab 200mm
 - lean concrete 20mm
- ⑫ **EXTERNAL - PAVING** (from top)
 - stone paving 40mm
 - fine sand
 - course gravel
 - perforated drain
- ⑬ **BASEMENT OPEN SPACE - MEDIA HALL** (from left)
 - LED media facade with mode of metal mesh frame holding LED light emit (programmable) for silicone tubes.
 - reference: "ventrix LED media facade"
 - supported by rectangular hollow section 100x100mm
 - reinforced in-situ concrete retaining wall 400mm
 - blume joint
 - stainless bar
- ⑭ **BASEMENT OPEN SPACE - FLOOR** (from top)
 - timber slats 25mm thick
 - timber battens 50x50mm



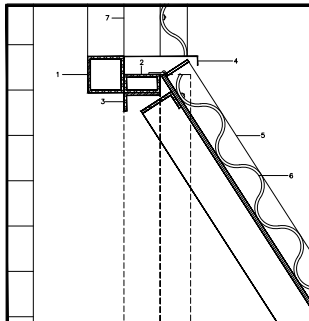
50 model image



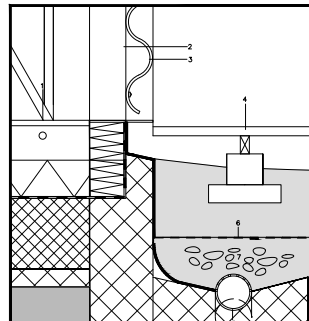
- 1:5 DETAIL A - FLAT ROOF TERRACE**
1. ROOF CONSTRUCTION (from top)
 - topsoil 60mm
 - drainage/protection mat, 35mm colored roofing
 - thermal insulation 100mm
 - impact sound insulation 20mm
 - vapour barrier
 - reinforced concrete topping 150mm
 - profiled metal sheeting 5mm
 2. FACADE CONSTRUCTION
 - translucent polycarbonate corrugated sheets 1th UV-resistant coating, fixed with screws
 - steel rectangular hollow section, 100x100mm
 - 150mm thermal insulation, rigid extruded polystyrene foam waterproofing
 - 15mm plasterboard
 - 3. steel I-section beam 300x150mm
 - 4. steel rectangular hollow section, 100x100mm
 - 5. timber piling, 50x100mm
 - 7. perforated gully
 - 8. steel sheet flashing, galvanised



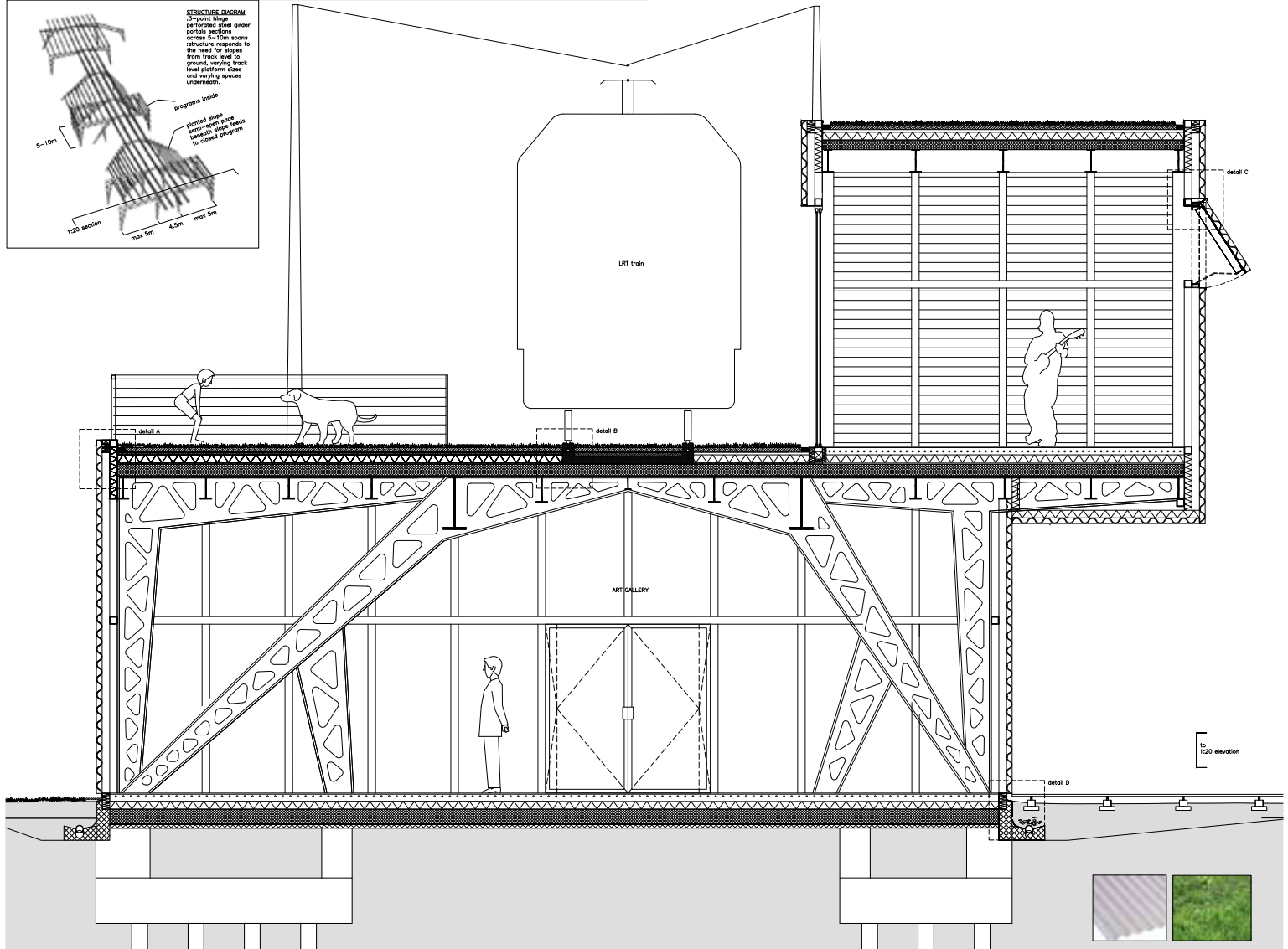
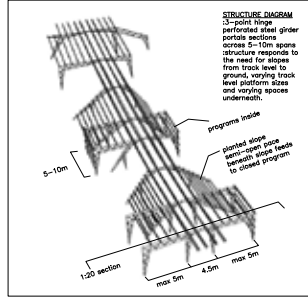
- 1:5 DETAIL C - ROOF WITH LRT TRACK**
1. ROOF CONSTRUCTION without LRT track (from top)
 - topsoil 60mm
 - drainage/protection mat, 35mm colored roofing
 - thermal insulation 100mm
 - impact sound insulation 20mm
 - vapour barrier
 - reinforced concrete topping 150mm
 - profiled metal sheeting 5mm
 2. ROOF CONSTRUCTION with LRT track (from top)
 - drainage/protection mat, 50 colored roofing
 - pre-fabricated concrete rail sleepers longitudinal
 - vapour barrier
 - reinforced concrete topping 150mm
 - profiled metal sheeting 5mm
 - 3. embedded LRT track to industrial detail
 - 4. steel I-section beam 300x150mm



- 1:5 DETAIL C - WINDOW**
1. rectangular hollow section 100x100mm
 2. rectangular hollow section 100x50mm
 3. single steel plate
 4. steel sheet flashing, galvanised
 5. steel angle frame 50x50mm
 6. transparent polycarbonate with UV-resistant coating
 7. rectangular hollow section below 100x100mm



- 1:5 DETAIL D - PLINTH**
1. GROUND FLOOR CONSTRUCTION
 - floor covering 15mm
 - insulated with underfloor heating 80mm
 - thermal insulation 100mm
 - waterproofing layer
 - reinforced concrete cast in-situ 200mm
 - lean concrete 120mm
 2. rectangular hollow section 100x100mm
 3. translucent polycarbonate corrugated sheets 1th UV-resistant coating, fixed with screws
 4. timber decking 25mm on concrete footing 200x200mm
 5. perforated drainage
 6. geotextile mat, fleece
 7. coarse gravel



50 model image

50 model image