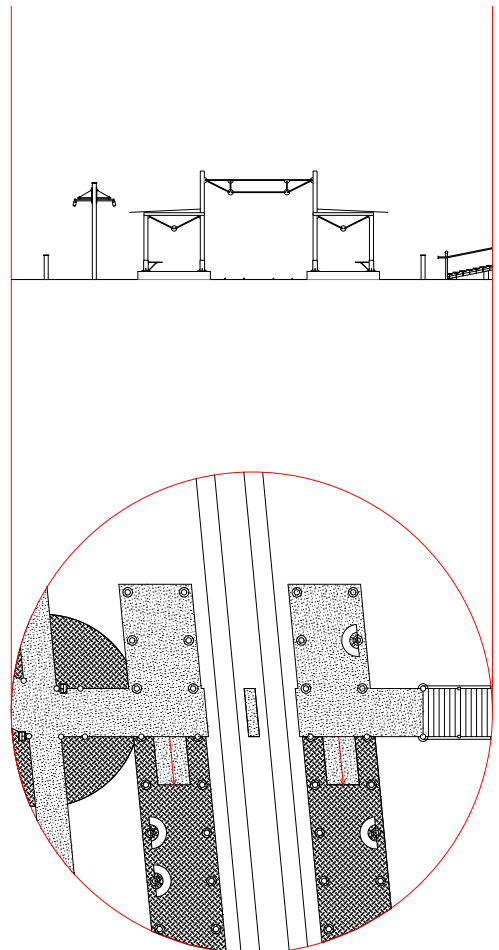
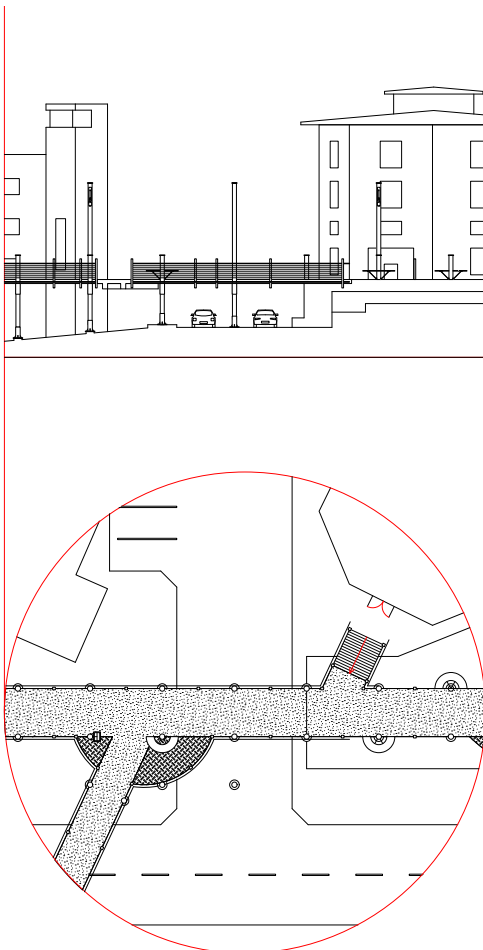


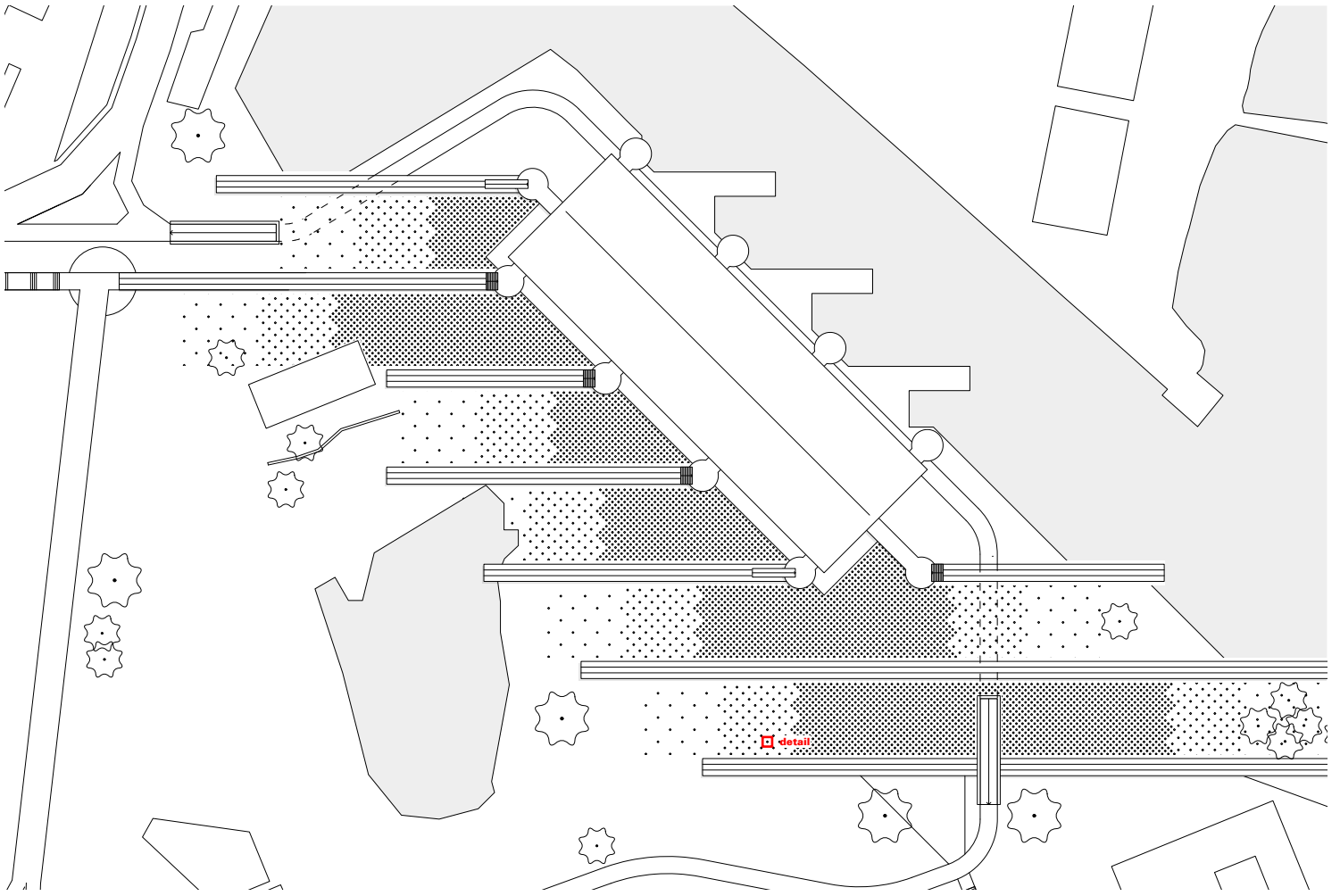
Plan site

0 100m



Street fragments

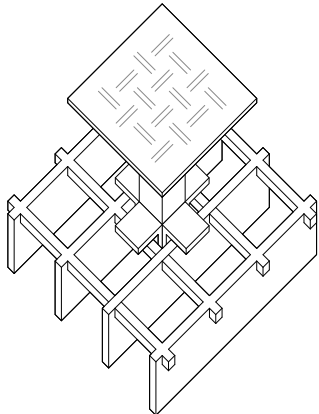
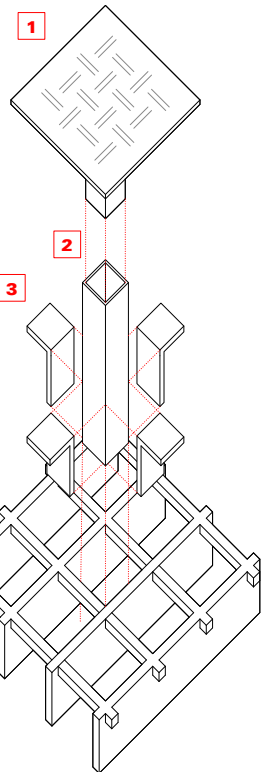
0 10m



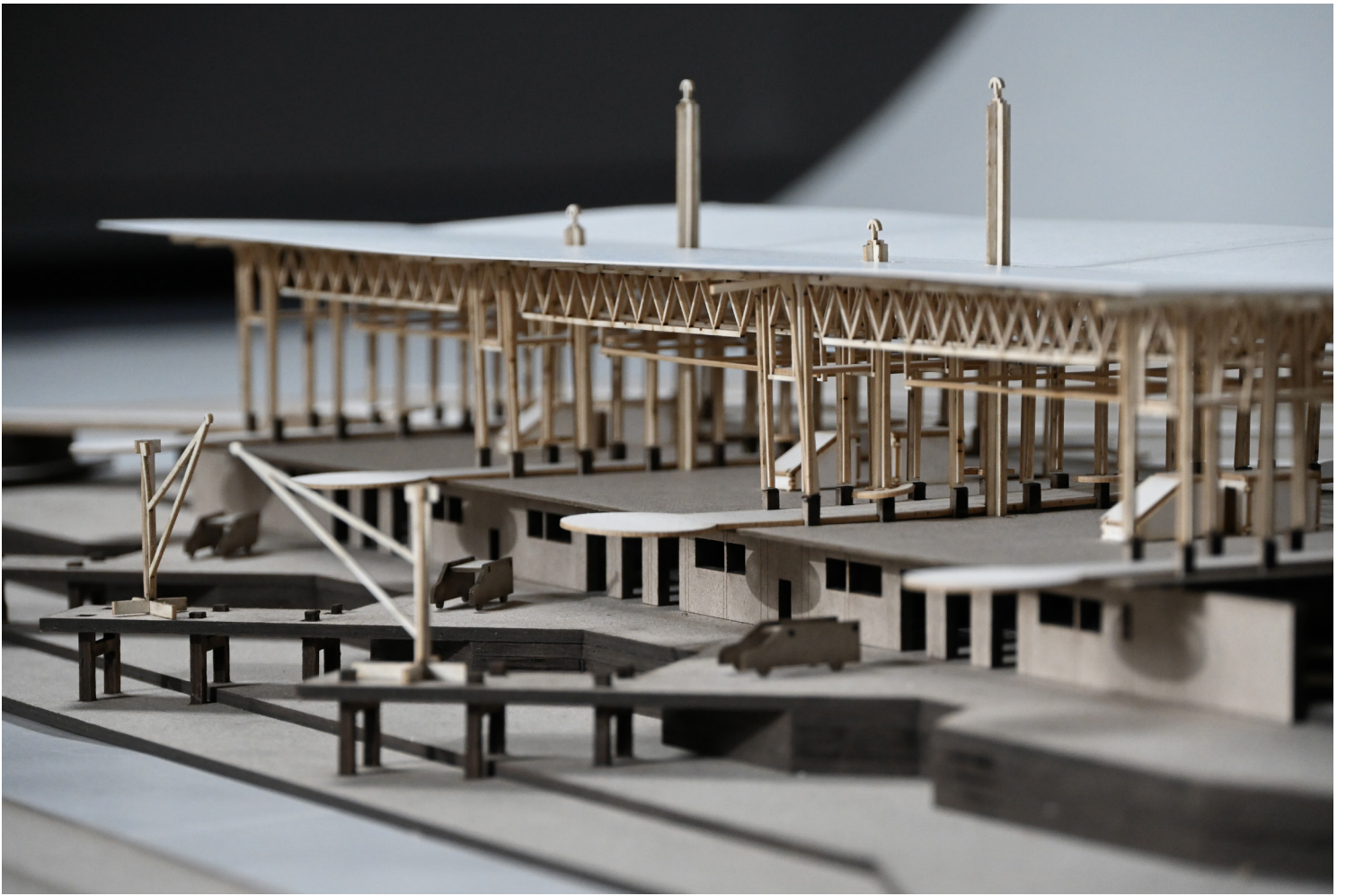
Plan site

0 20m

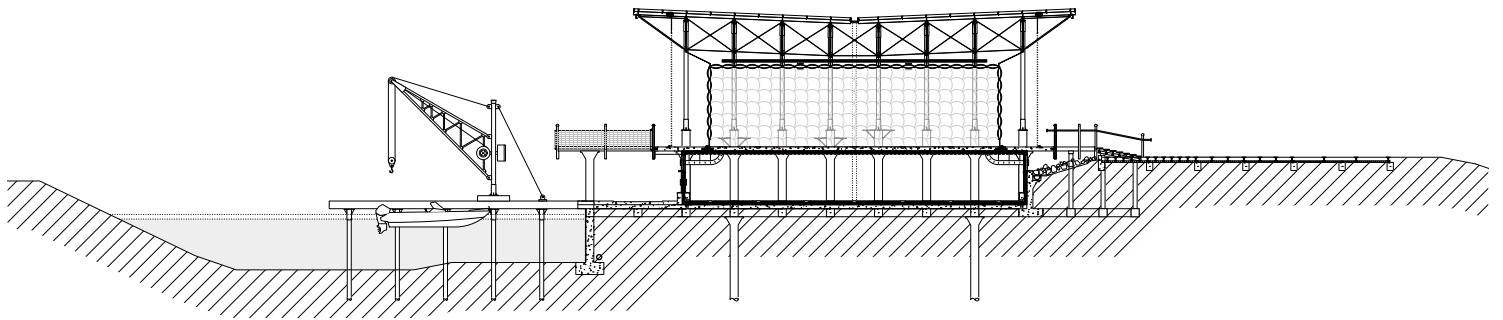
- 1** 300x300mm steel chequered plate end cap
- 2** 73x73mm steel square hollow section
- 3** 127x76x12.7mm unequal angles welded
- 4** 130mm deep 150x150mm steel welded grid



Steel reinforced ground

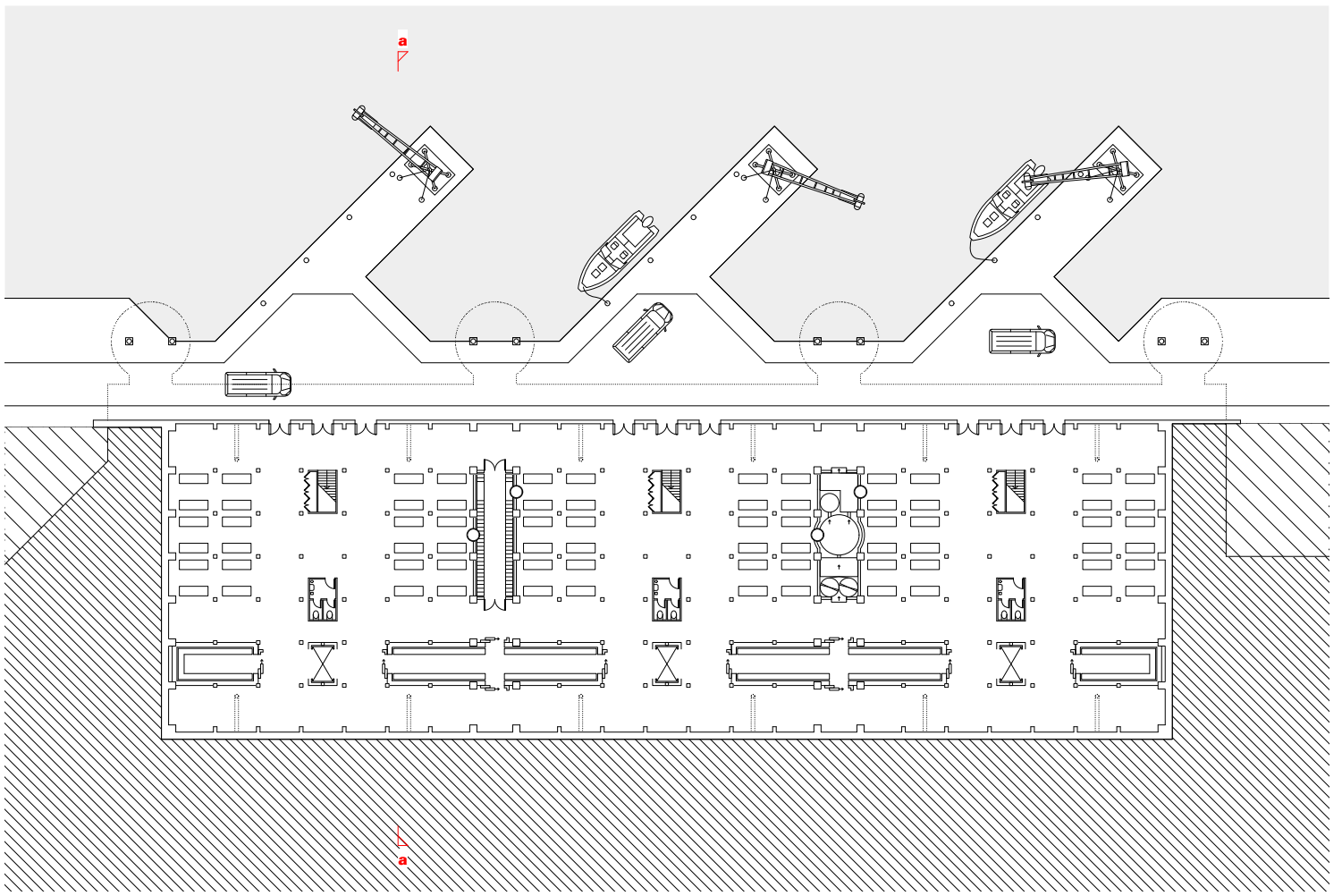


Logistics below, and market hall above



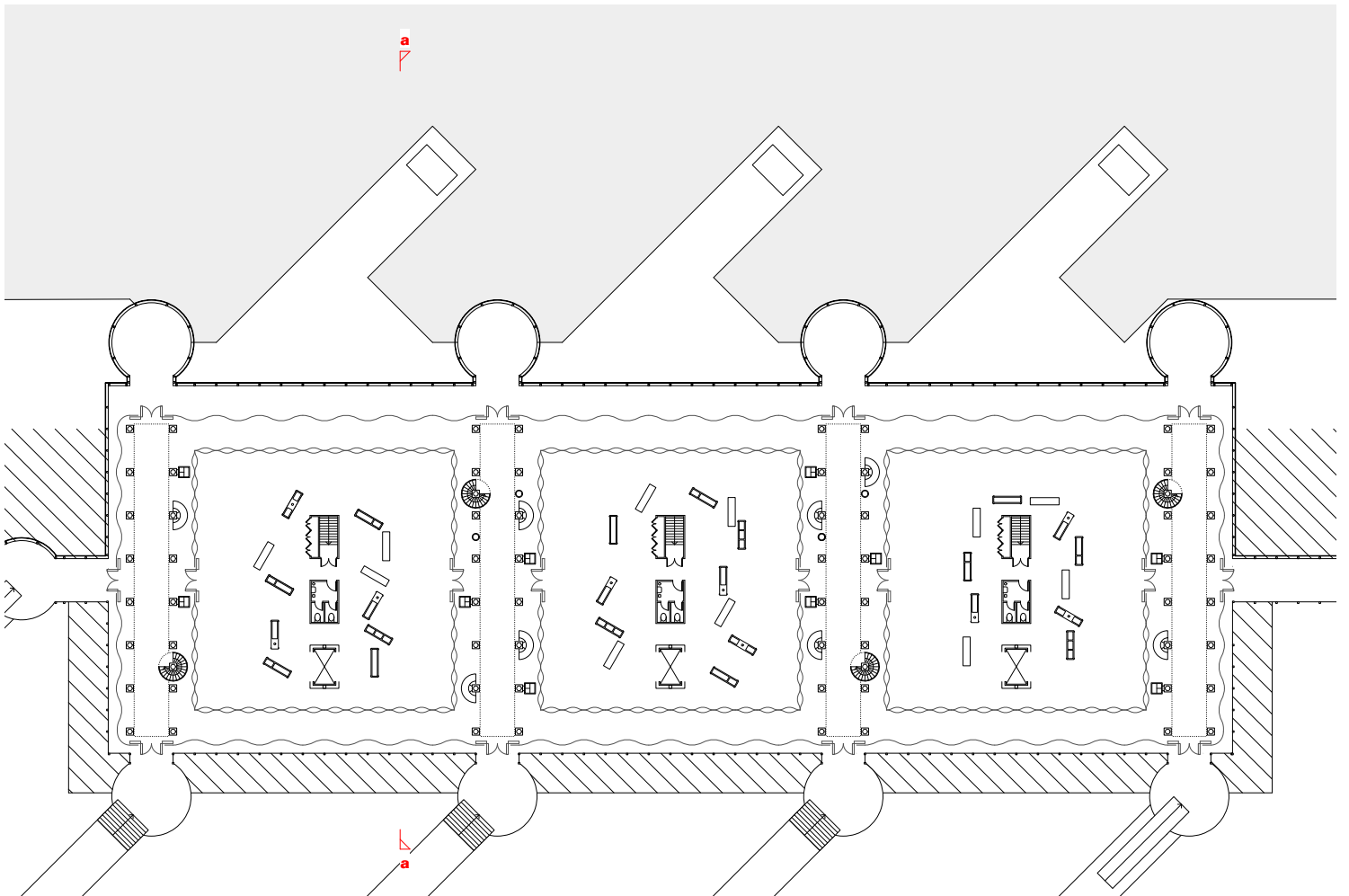
Section aa 1:200

0 ————— 10m



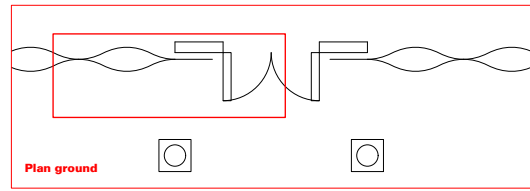
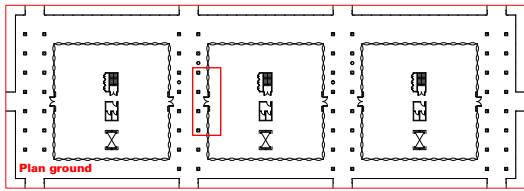
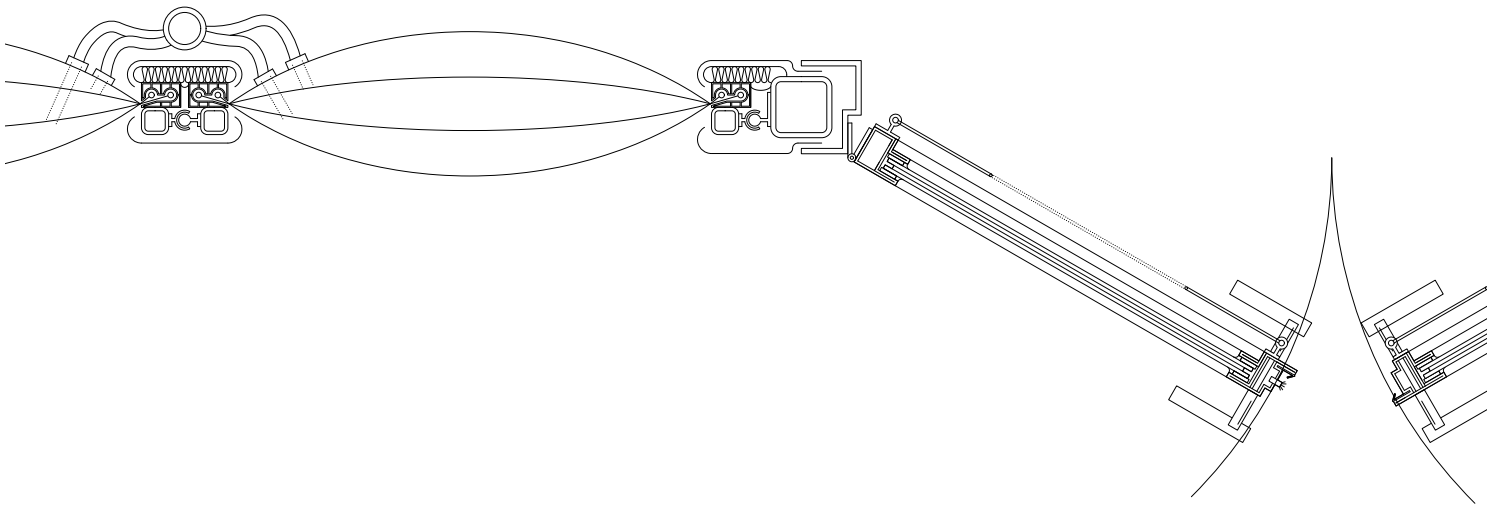
Basement floor plan

0 10m



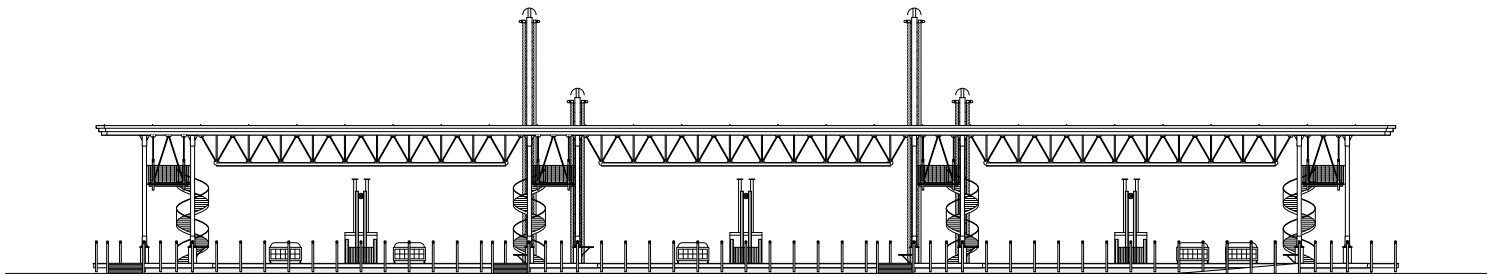
Ground floor plan

0 10m

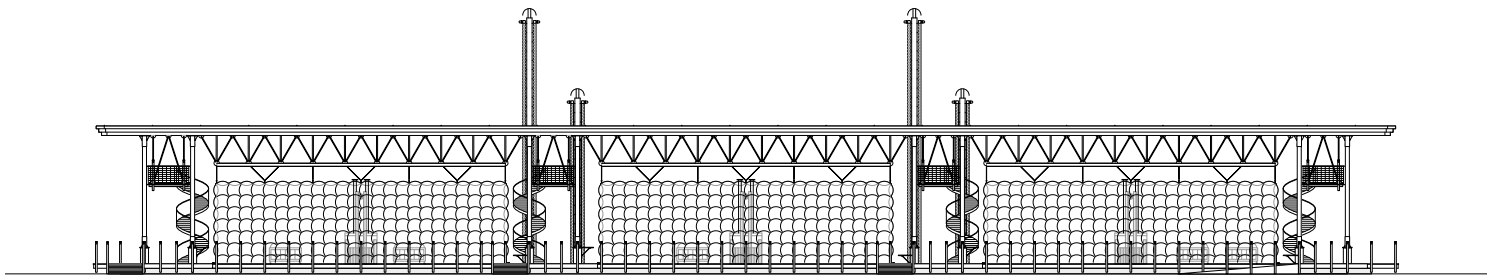


Door jamb on temporary ETFE façade

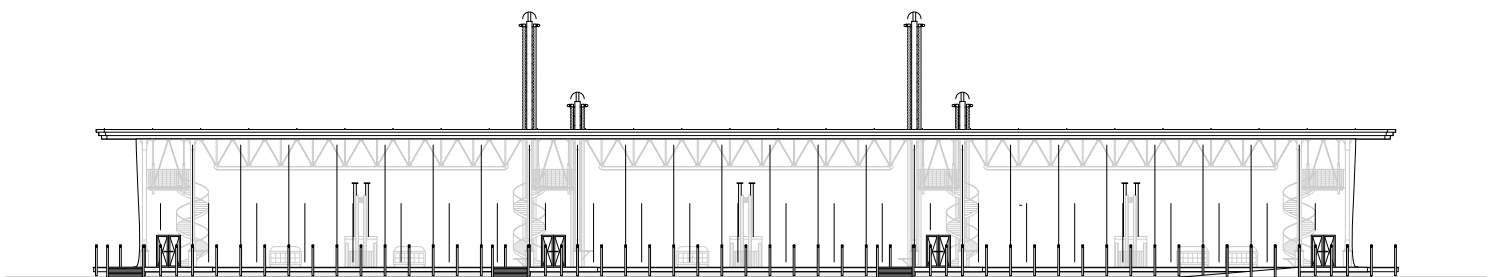
0  20cm



JAN FEB MAR APR MAY JUN JUL AUG SEP OCT NOV DEC



JAN FEB MAR APR MAY JUN JUL AUG SEP OCT NOV DEC



South elevation

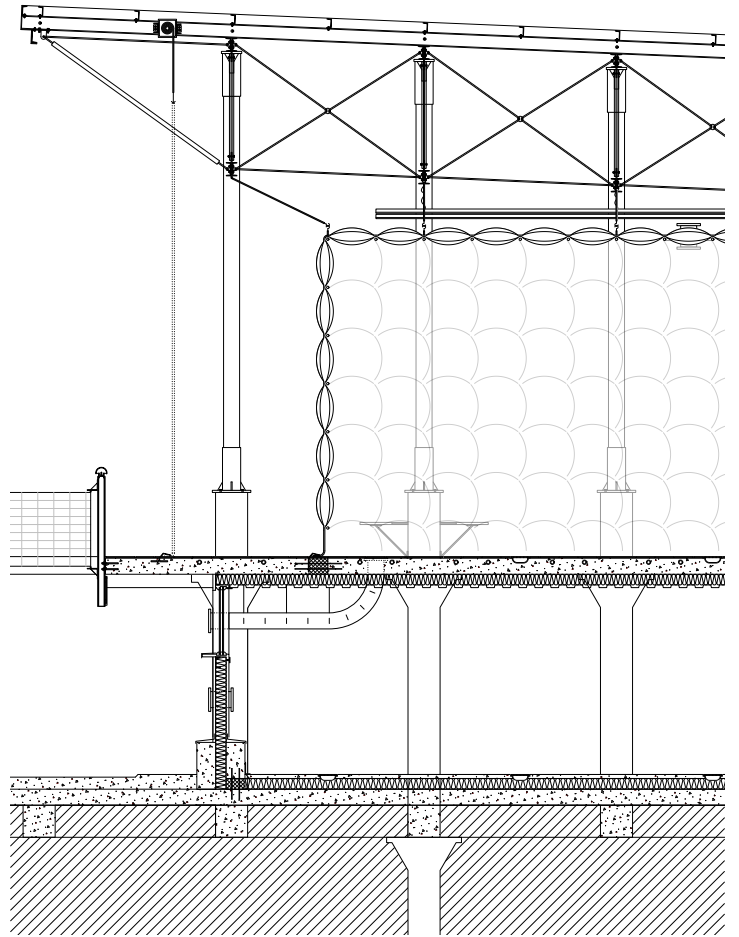
JAN FEB MAR APR MAY JUN JUL AUG SEP OCT NOV DEC

0  10m



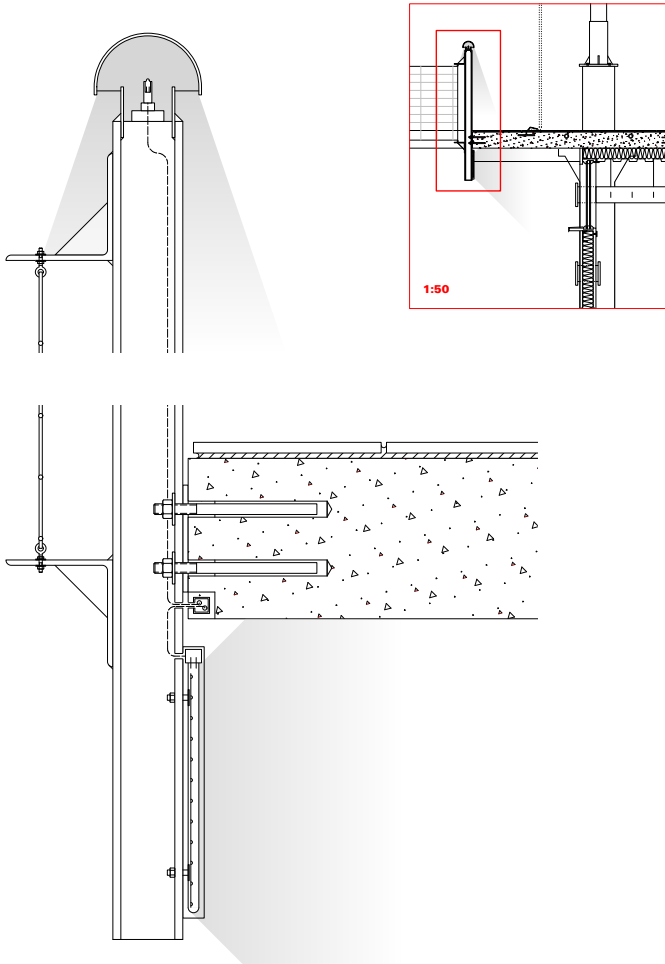
North elevation

0 — 2m



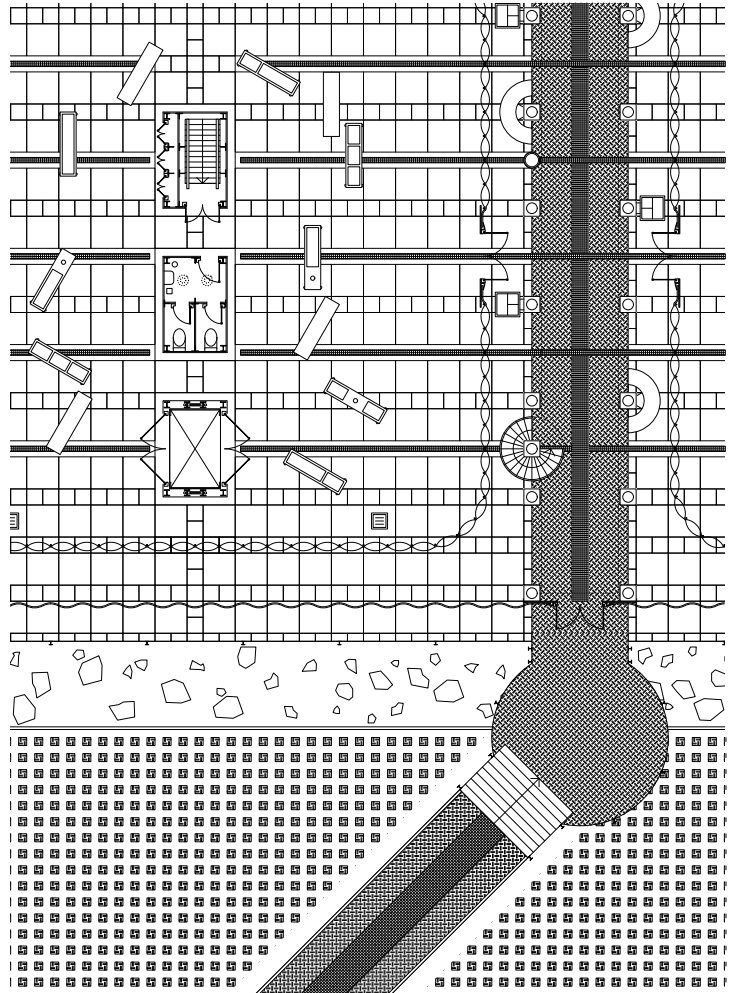
Section aa

0 — 2m



Balustrade

0 — 20cm

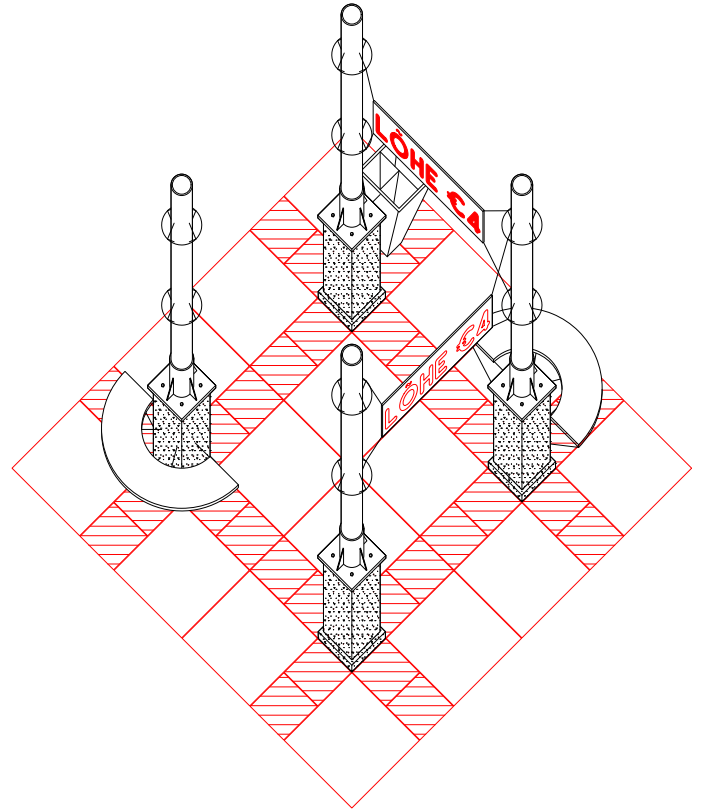


Ground floor plan

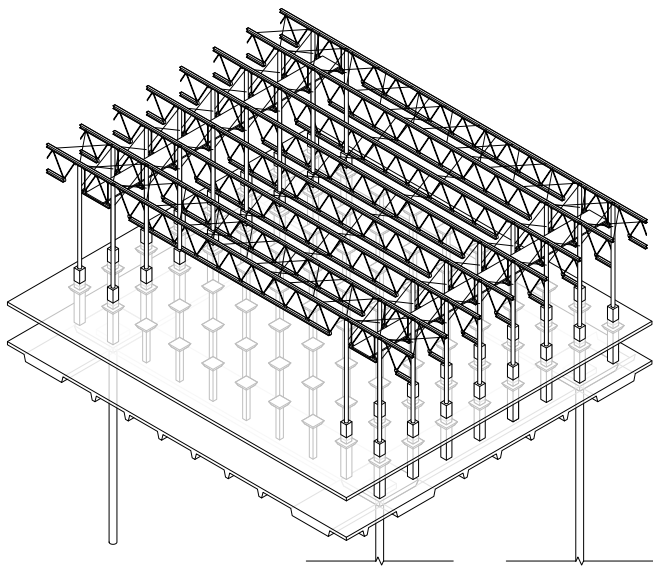
0 — 5m



View through column corridor



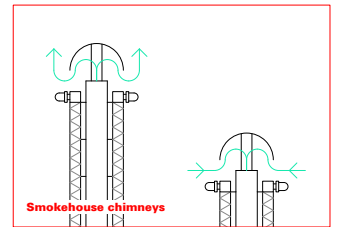
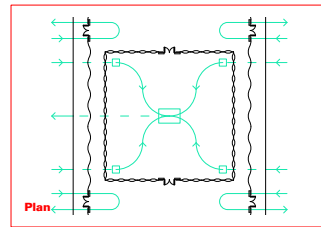
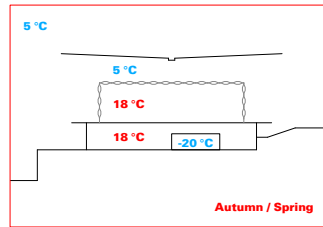
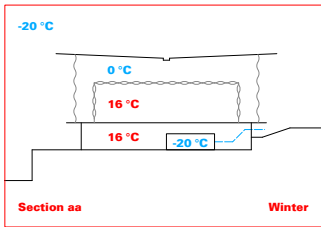
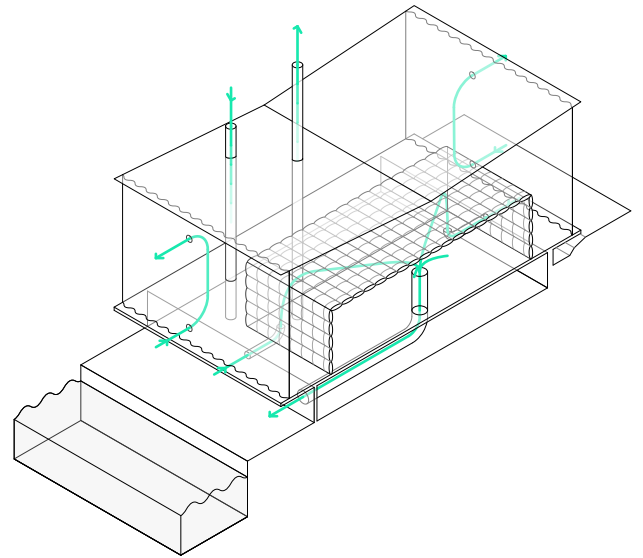
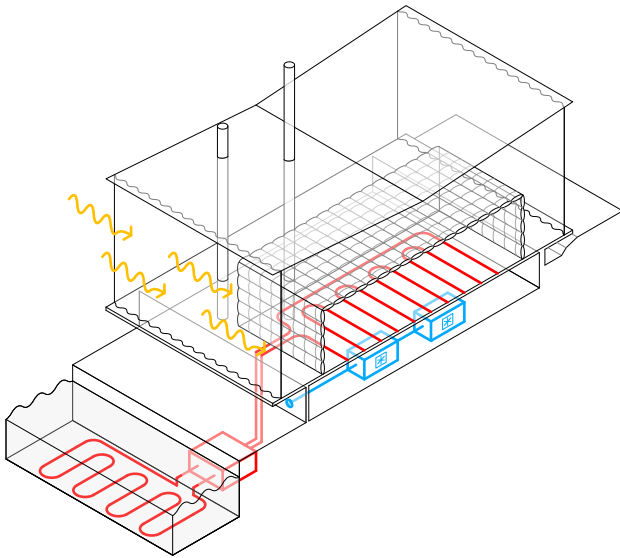
Column module



Axonometric structure

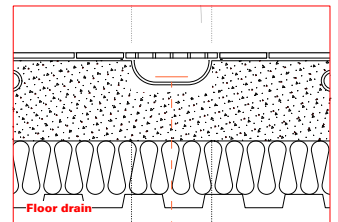
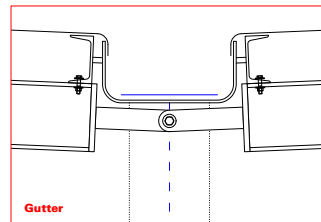
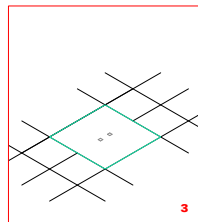
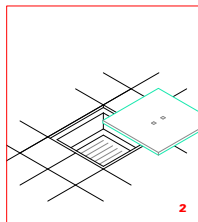
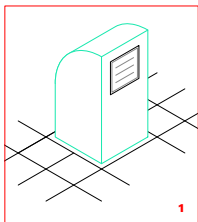
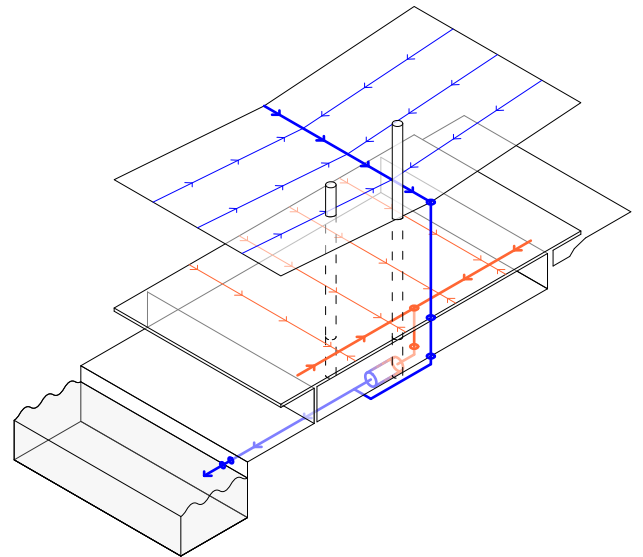
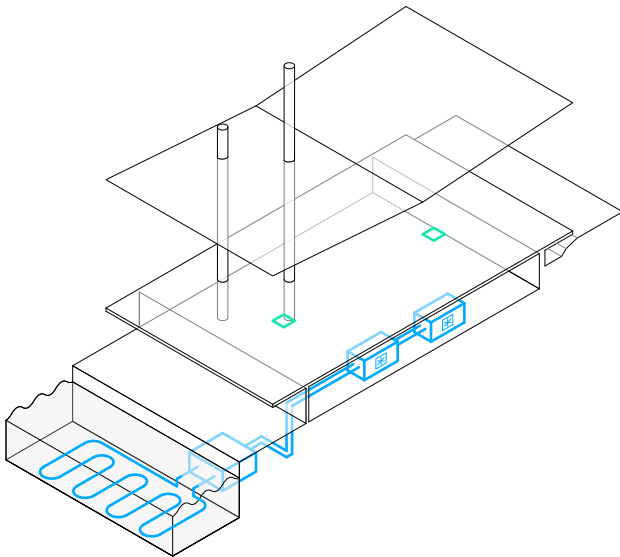


View of market hall



Winter — free cooling — water-source heating — solar gains

Ventilation



Summer — water-source cooling — temporary vents

Water — rainwater — washdown wastewater