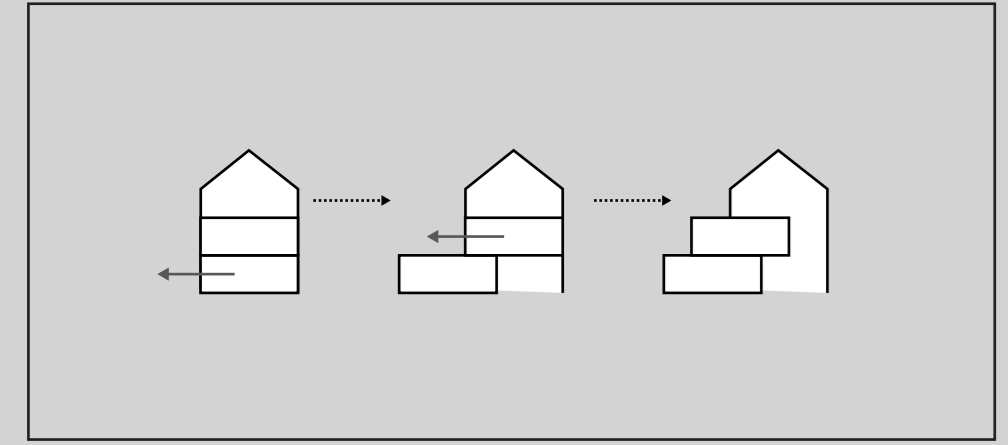
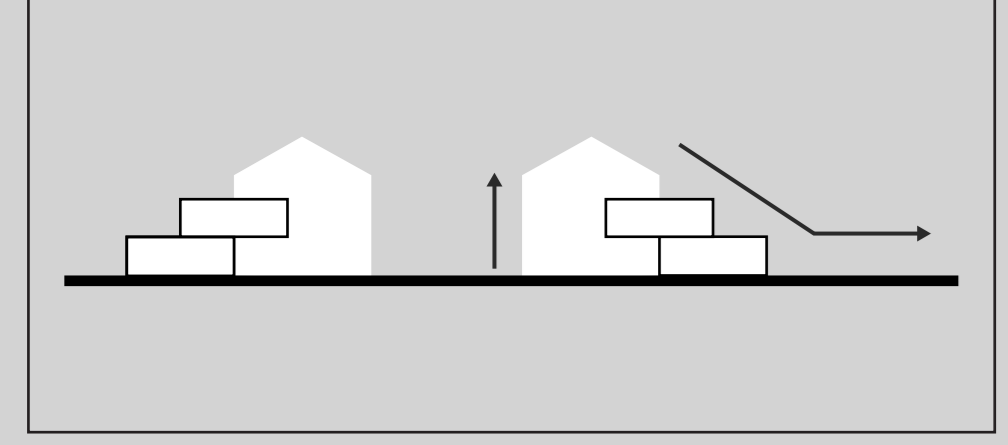


Shape grammar in het ontwerp voor een Montessori lyceum

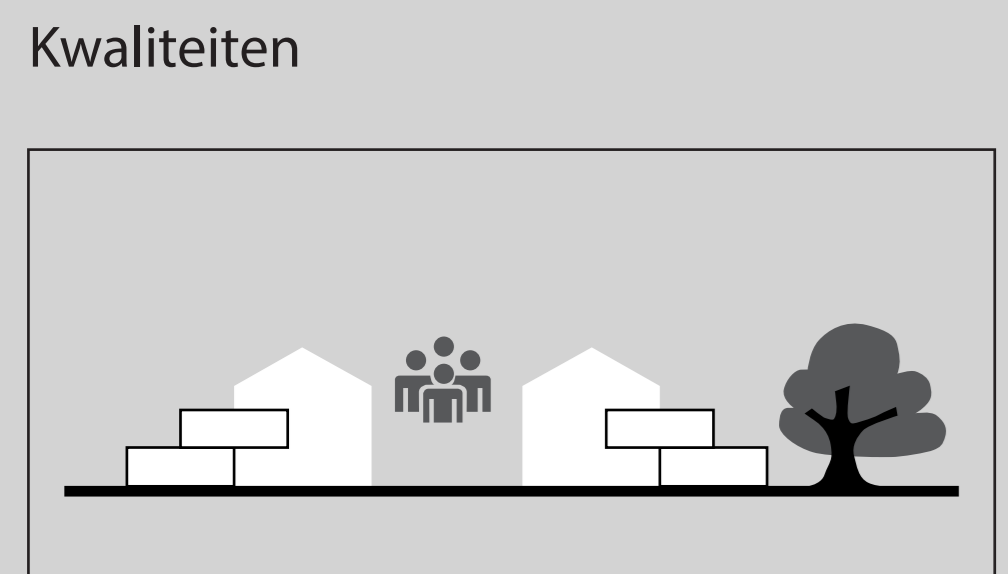
Explorelab 17
Nina Verkerk 1360450



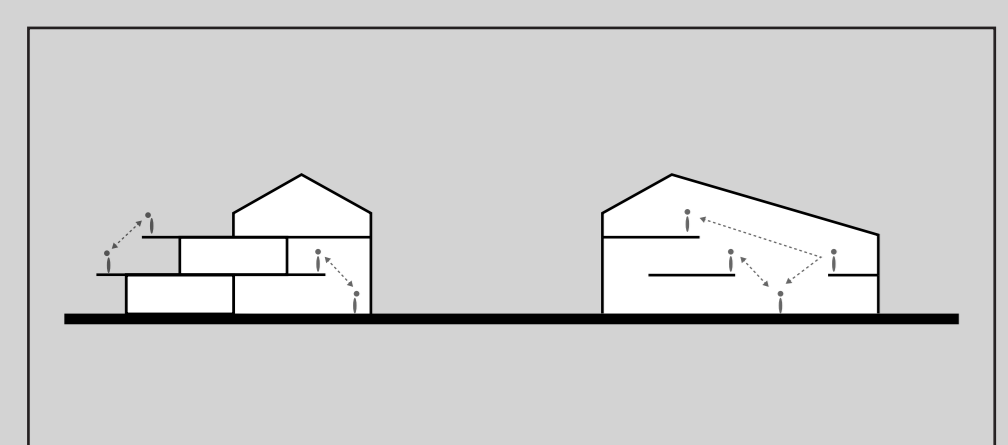
Ruimtelijk concept
transformaties door middel van shape grammar



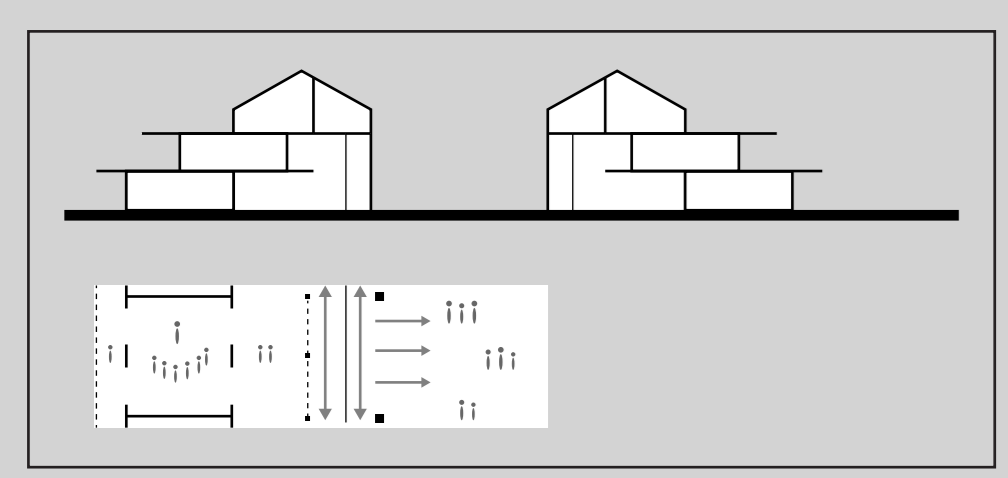
Architectonisch concept
micro maatschappij



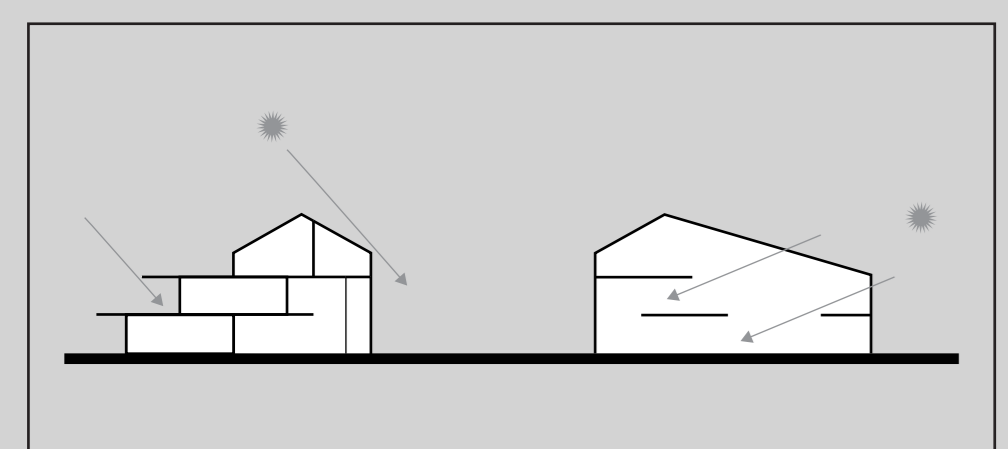
Twee werelden



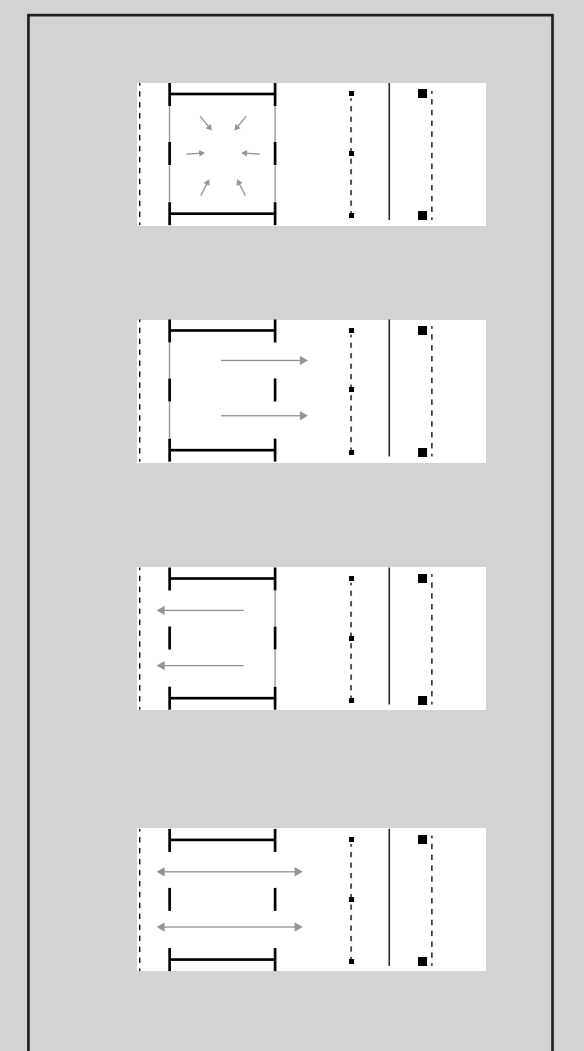
Zichtlijnen



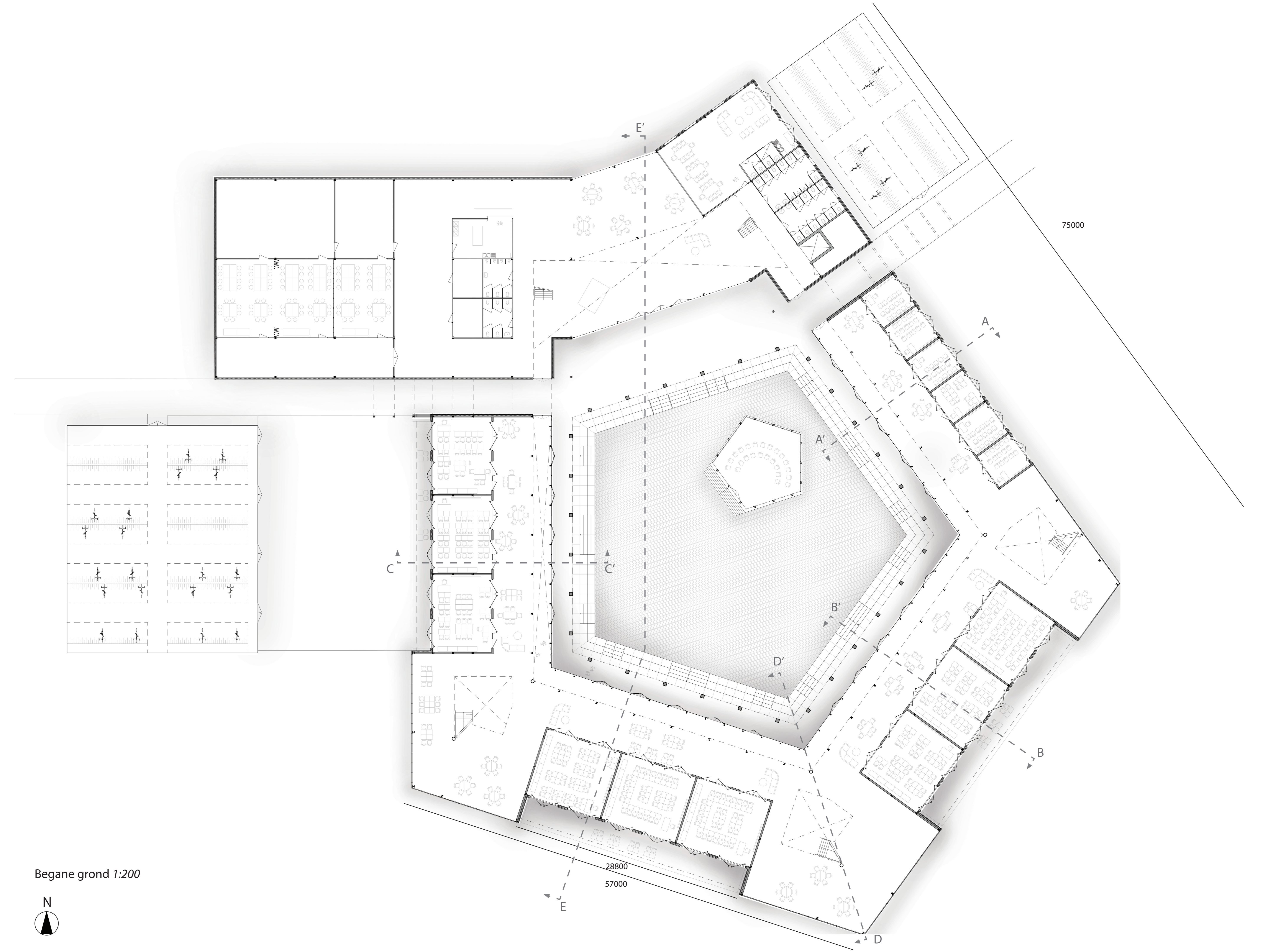
Verskillende type ruimten
[vnr: reflectie, klassikaal, samenwerken, bufferzone, oefenen]



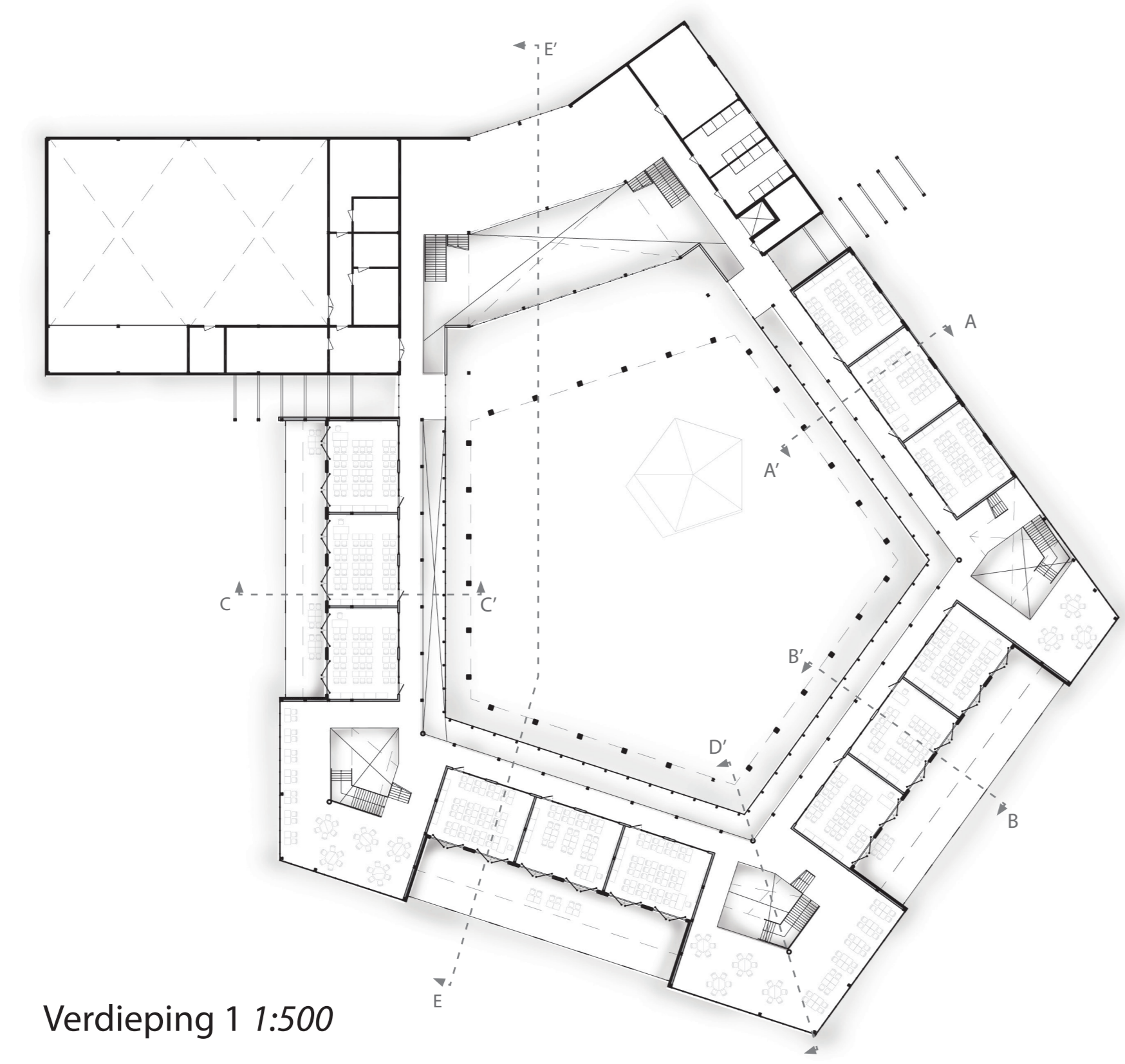
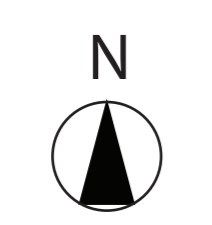
Daglicht
[gebouw zo vormgeven dat juist wel of geen direct zonlicht in het ontwerp komt]



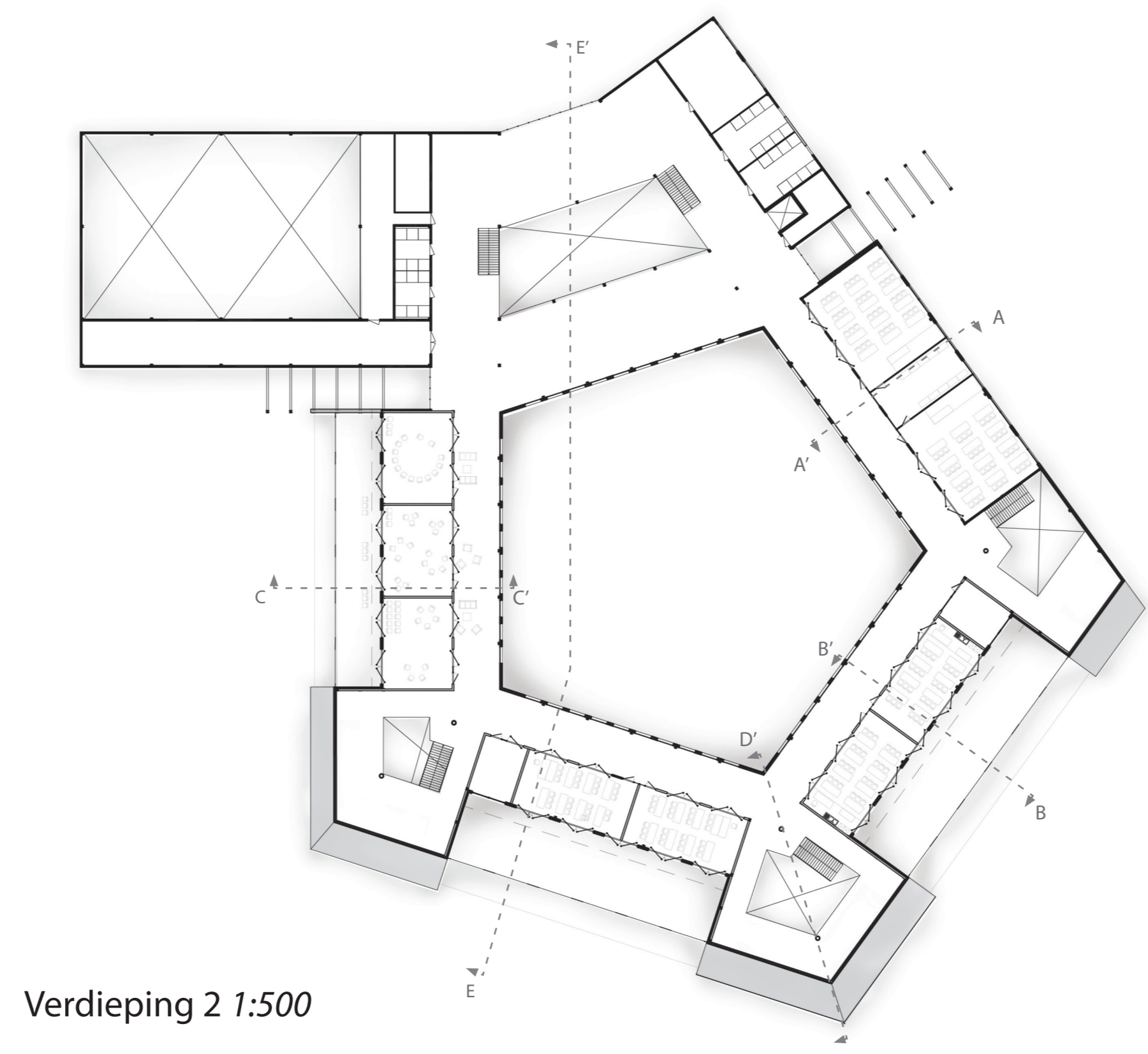
Flexibel ruimtegebruik



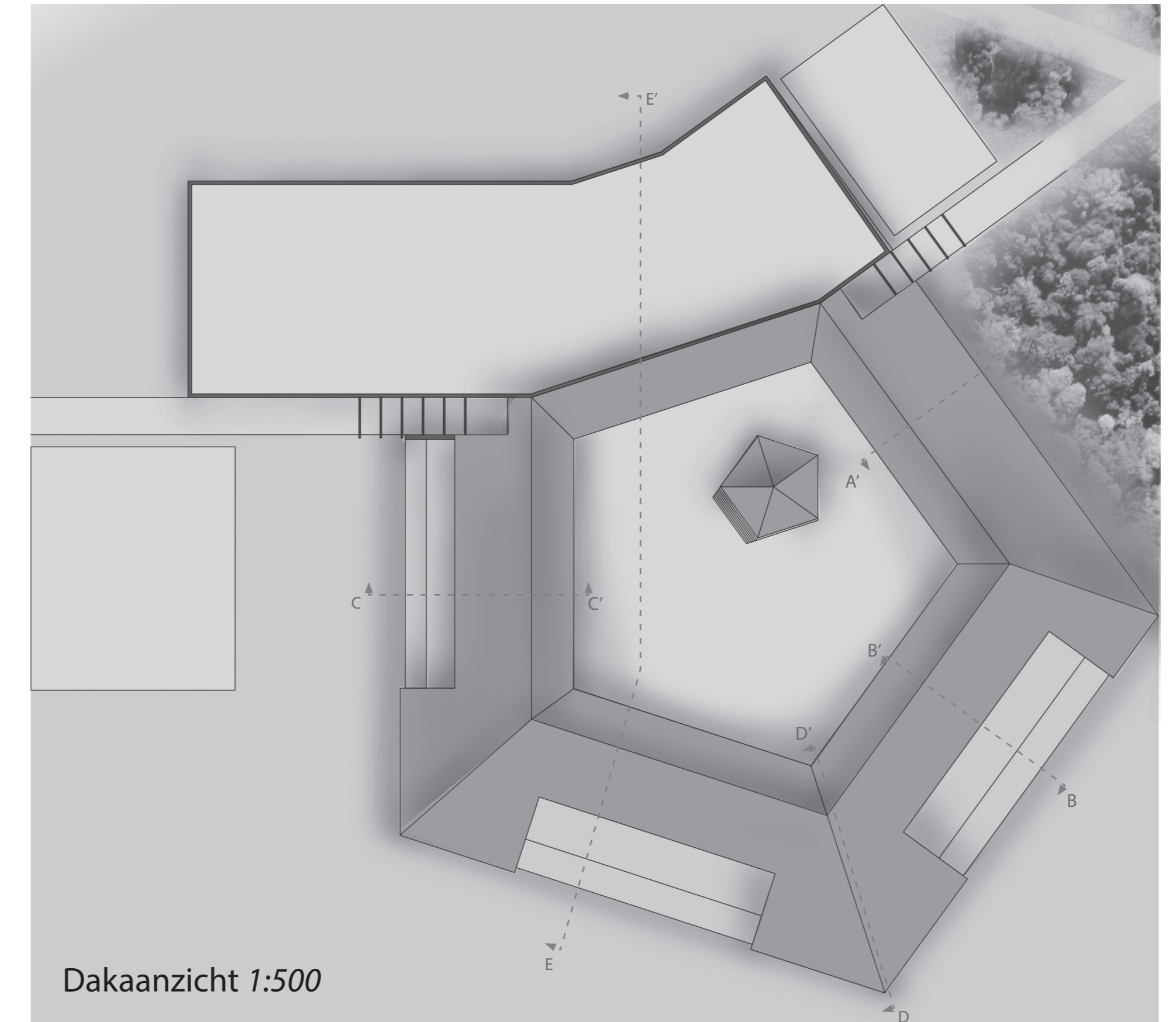
Begane grond 1:200



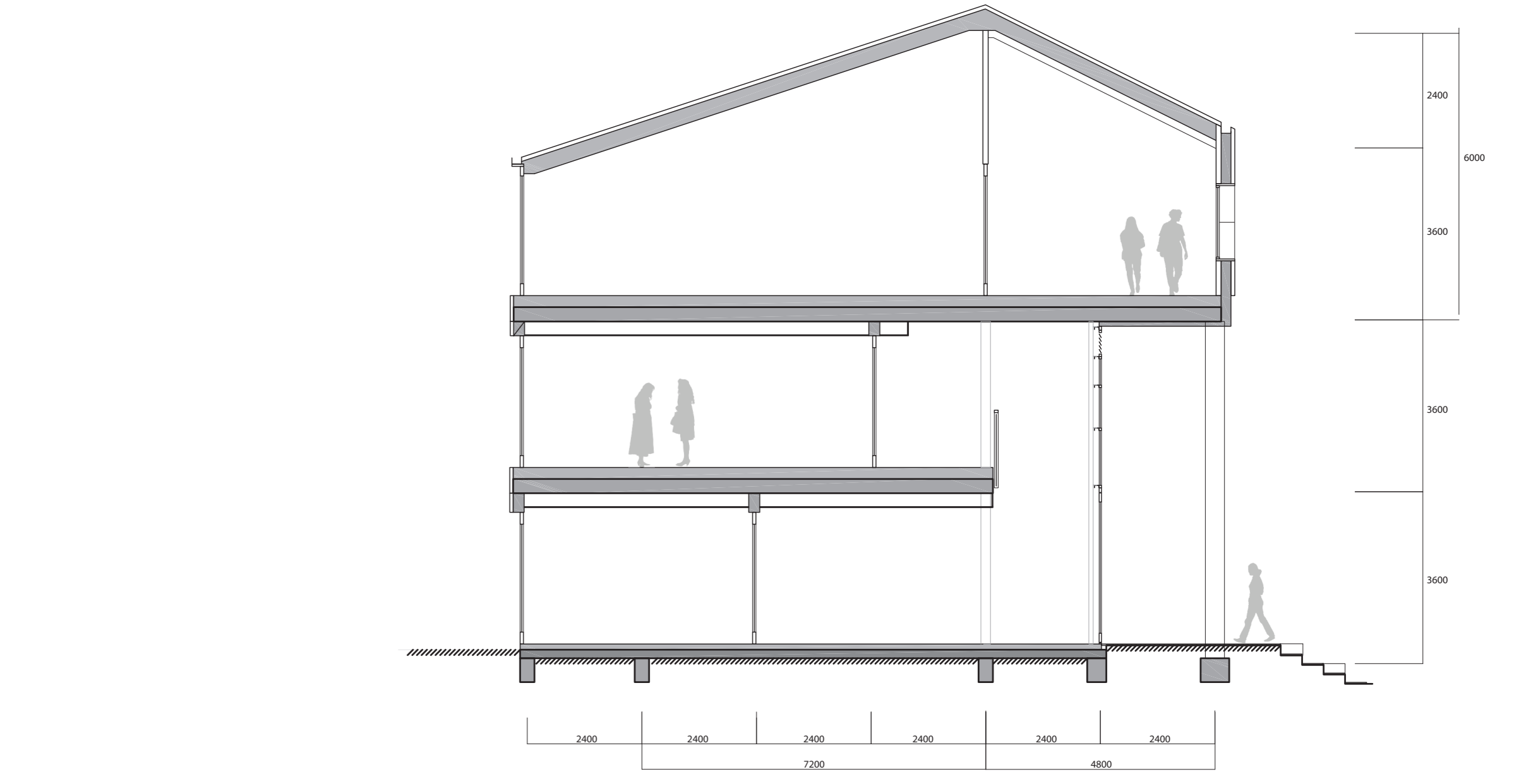
Verdieping 1 1:500



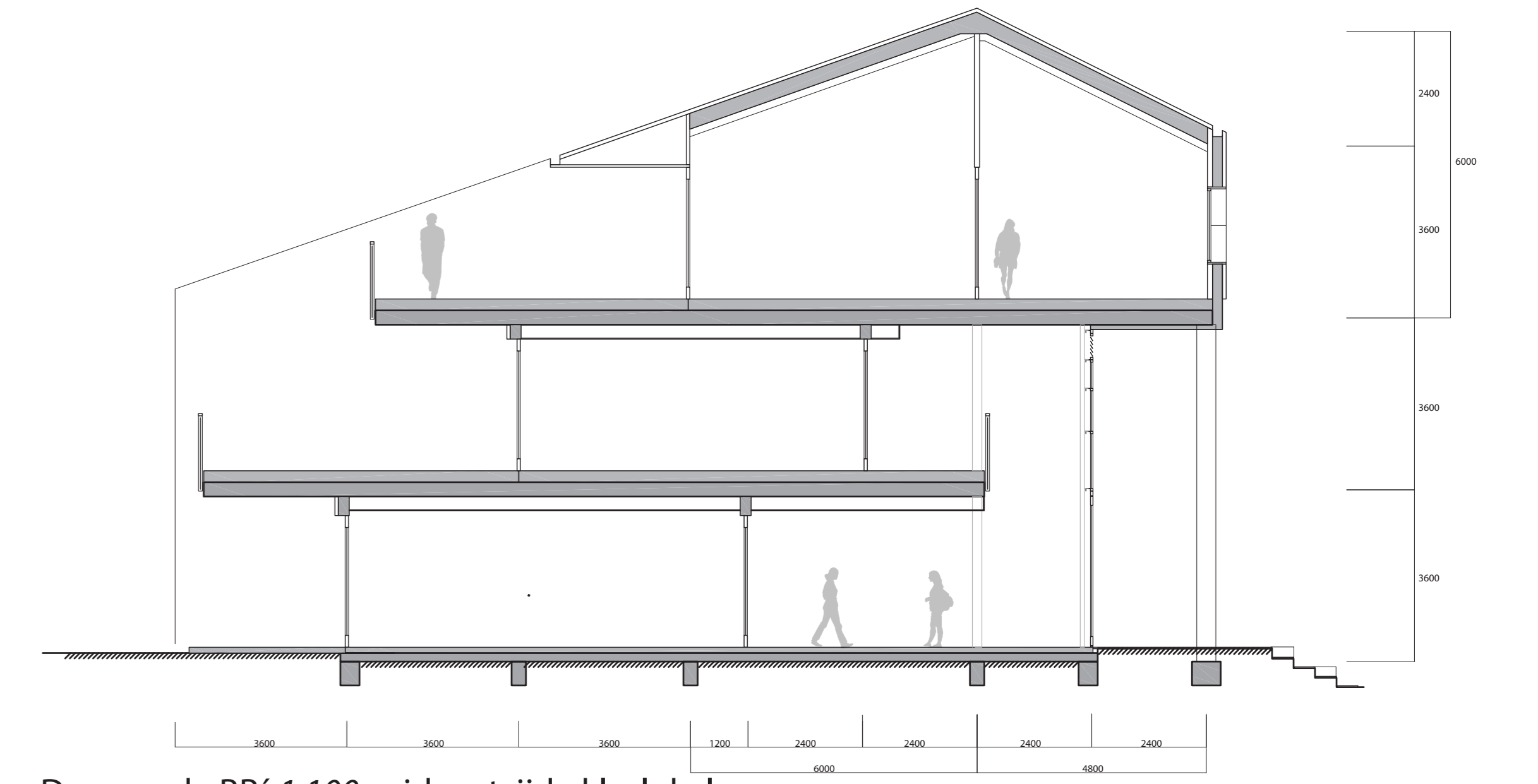
Verdieping 2 1:500



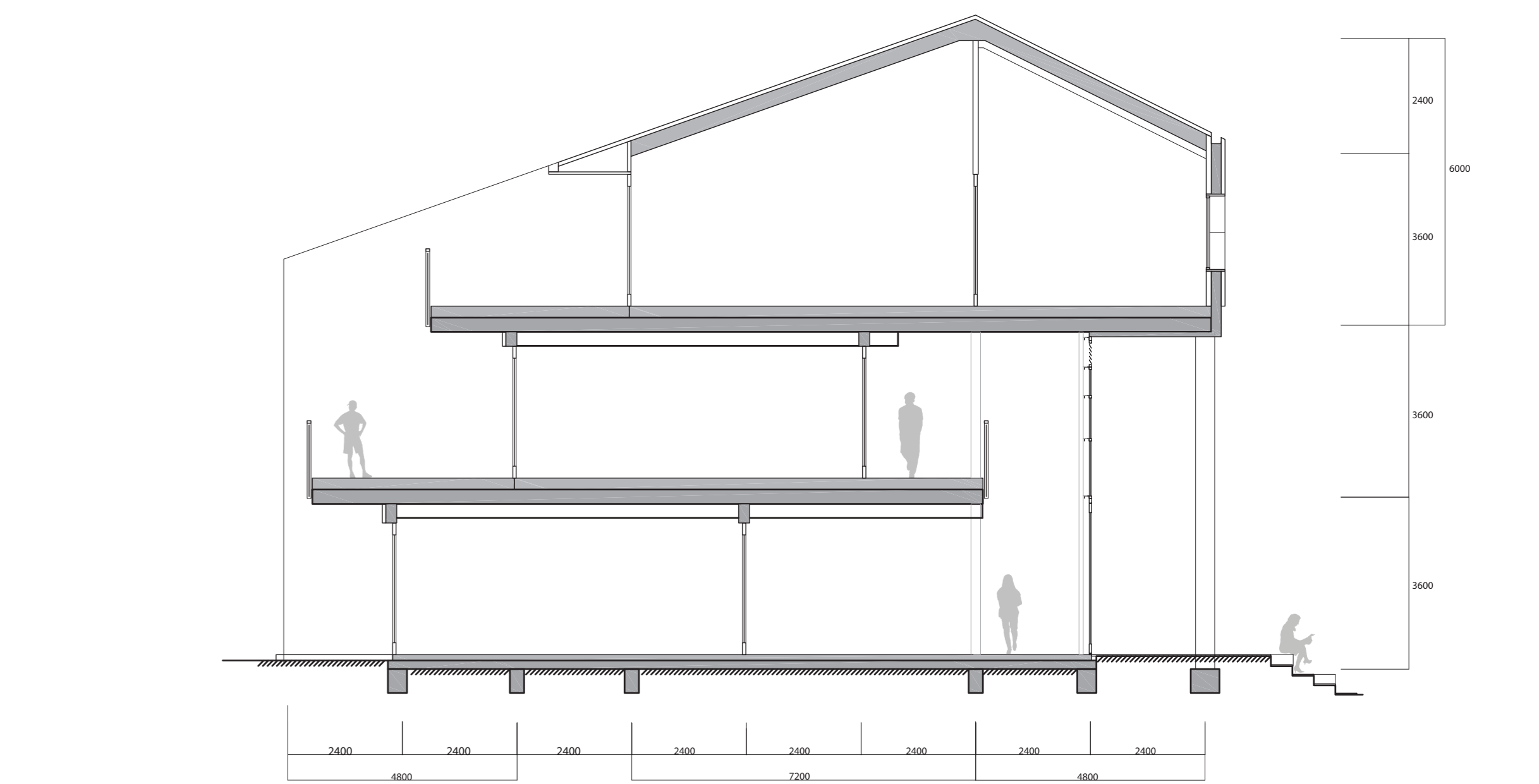
Dakaanzicht 1:500



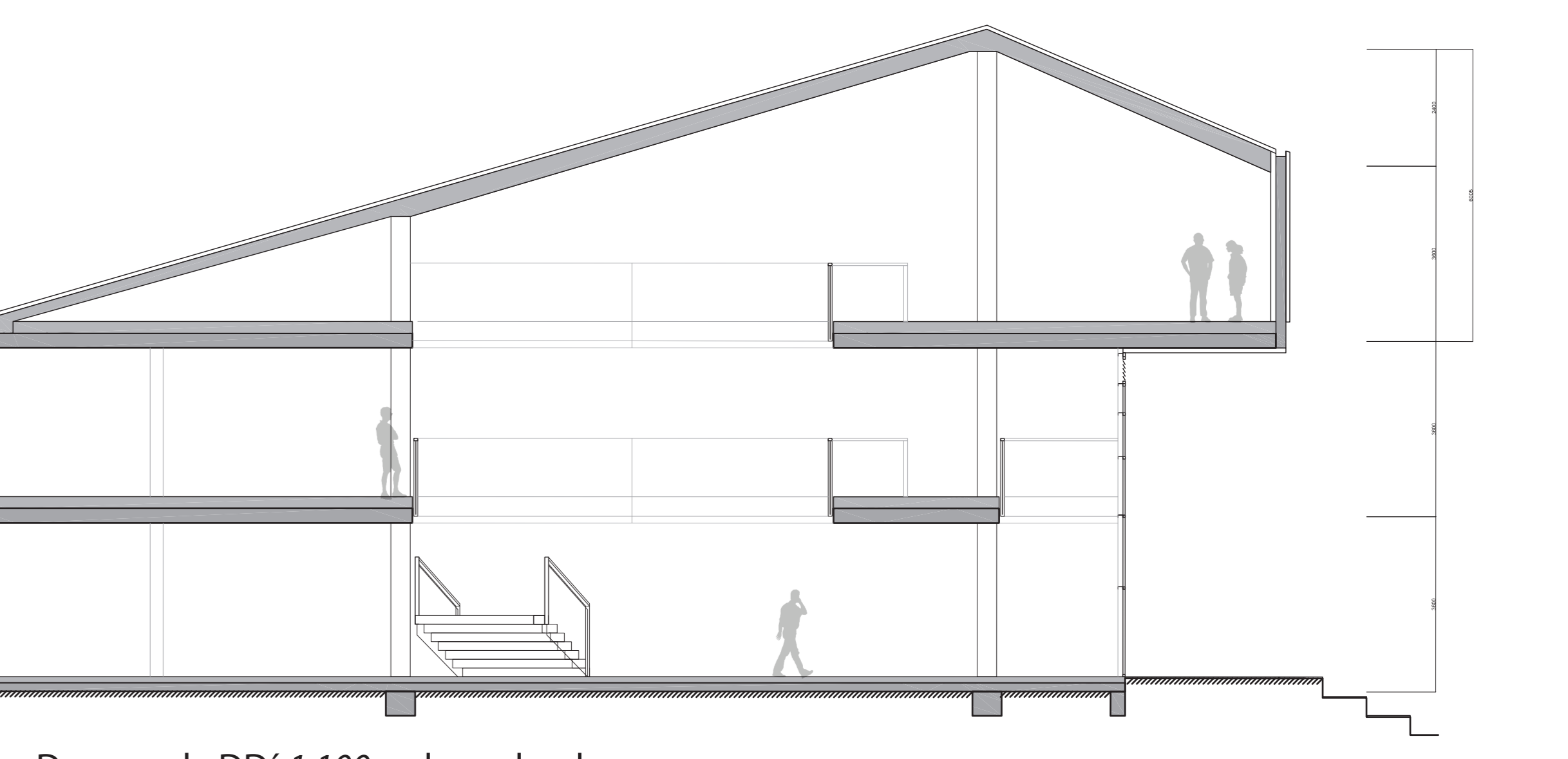
Doorsnede AA' 1:100 noordoostzijde klaslokalen



Doorsnede BB' 1:100 zuidoostzijde klaslokalen



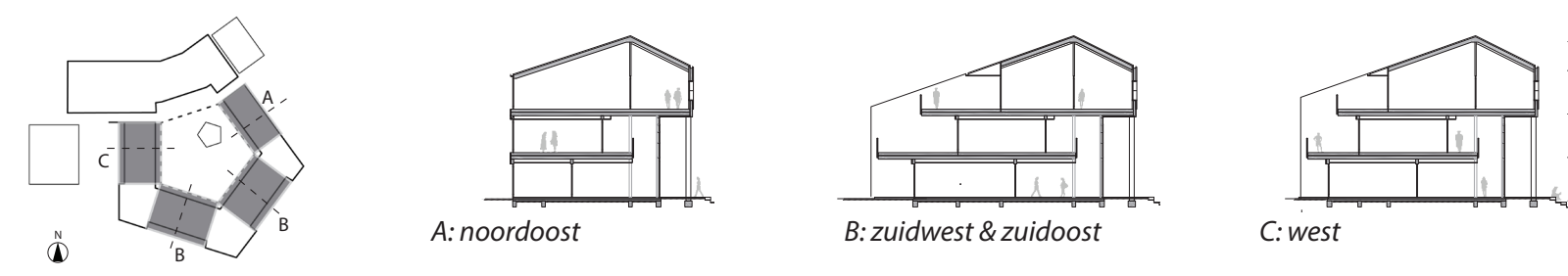
Doorsnede CC' 1:100 westzijde klaslokalen



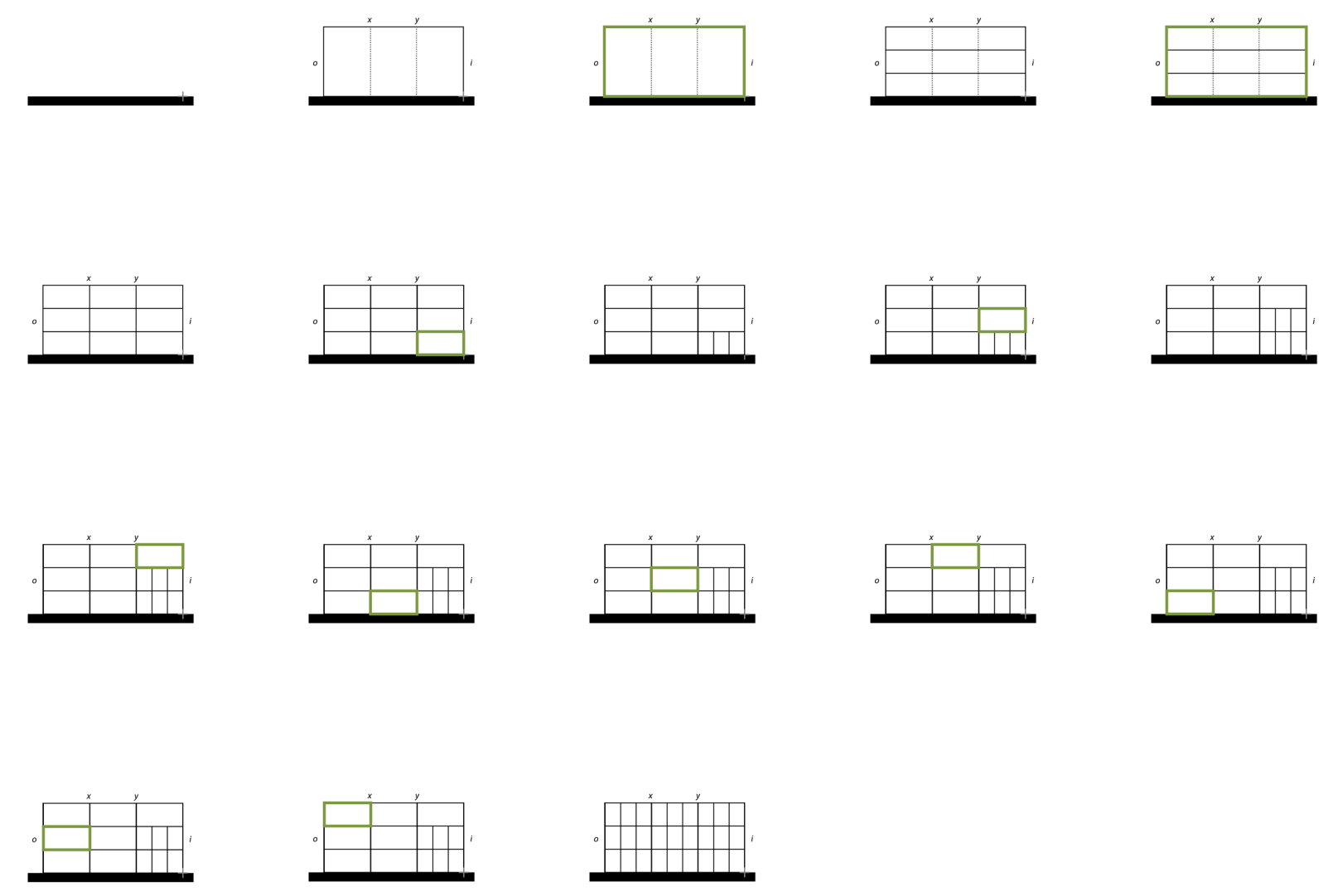
Doorsnede DD' 1:100 gebouwhoek

Shape grammar

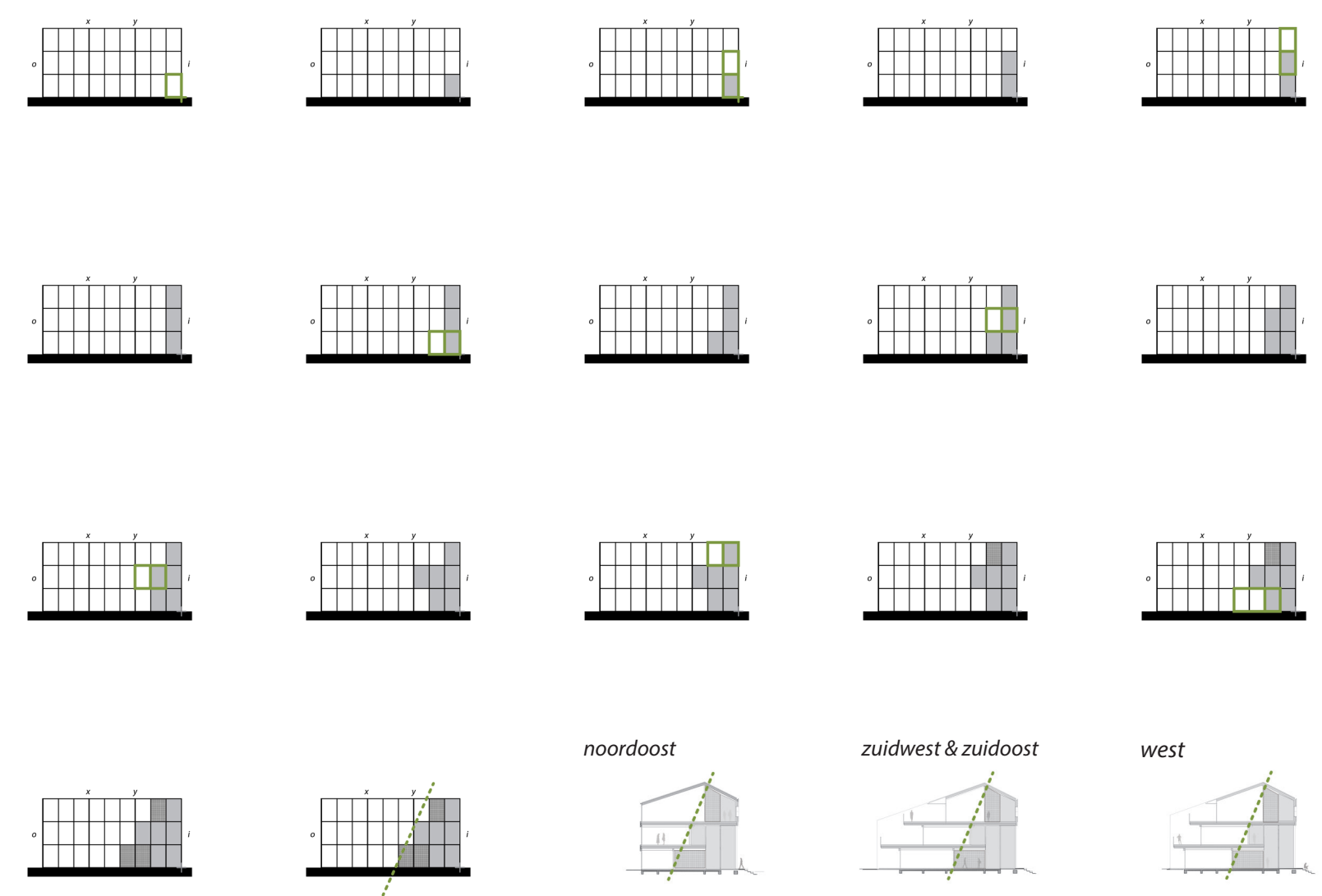
Transformatie van een vooraf gedefinieerd grid



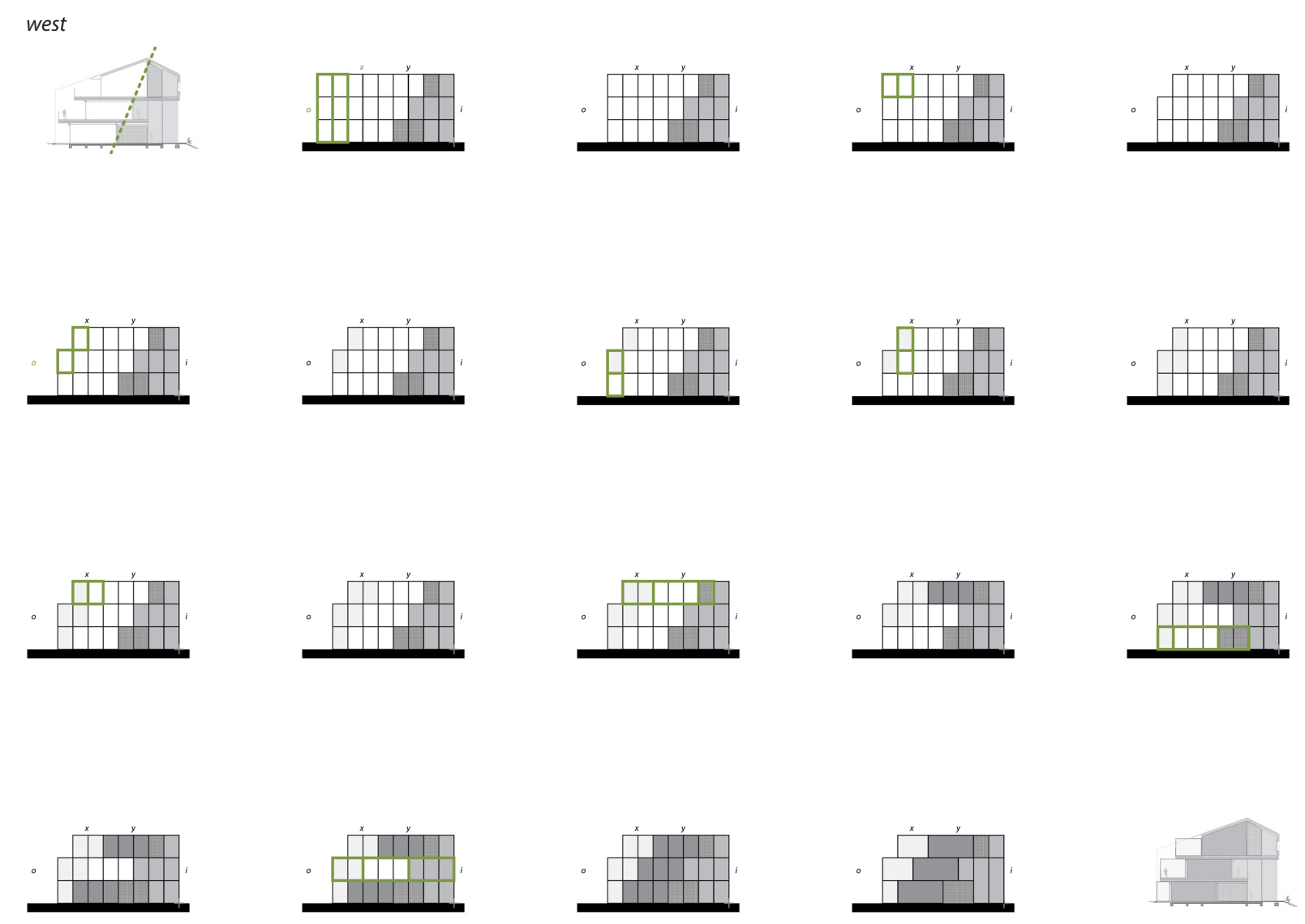
Fase A: Definier het onderliggende grid



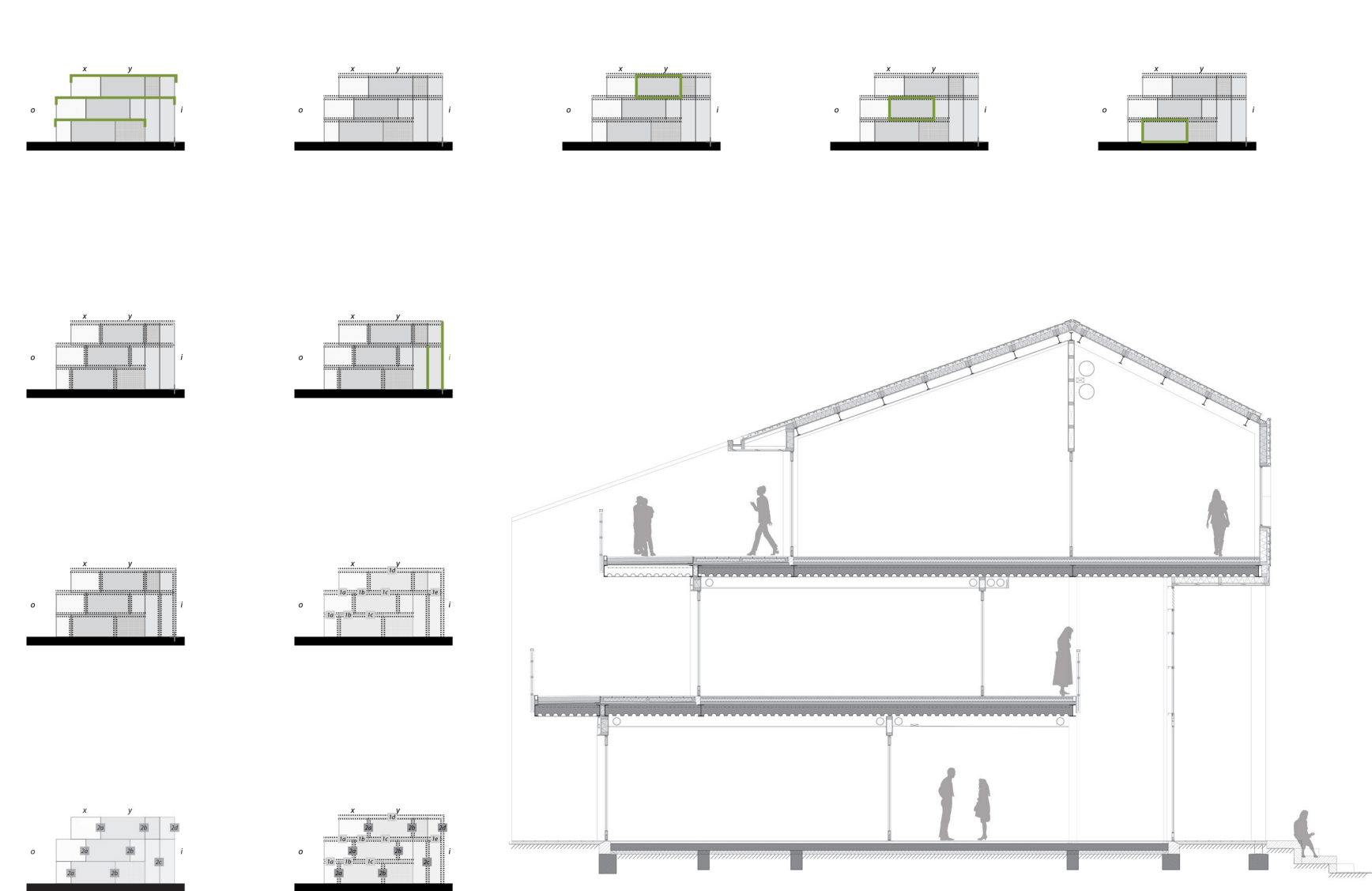
Fase B: Functionele uitwerking van het algemene deel



Fase C: Functionele uitwerking van een ontwerpvariant

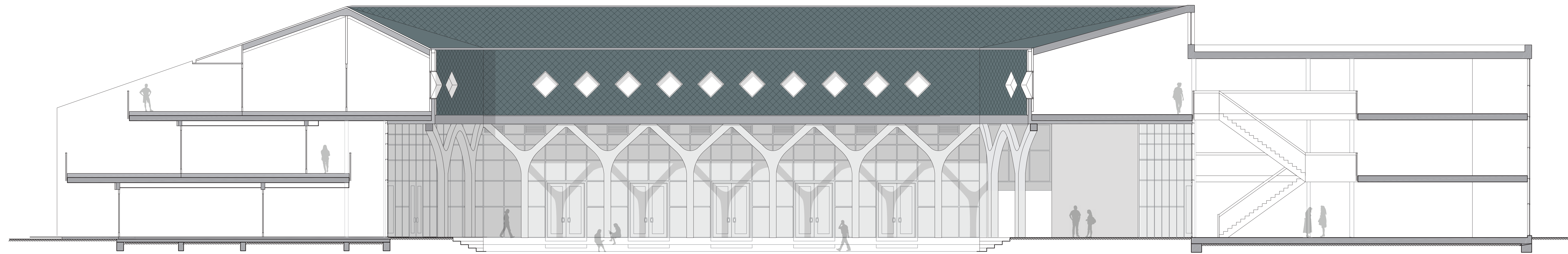
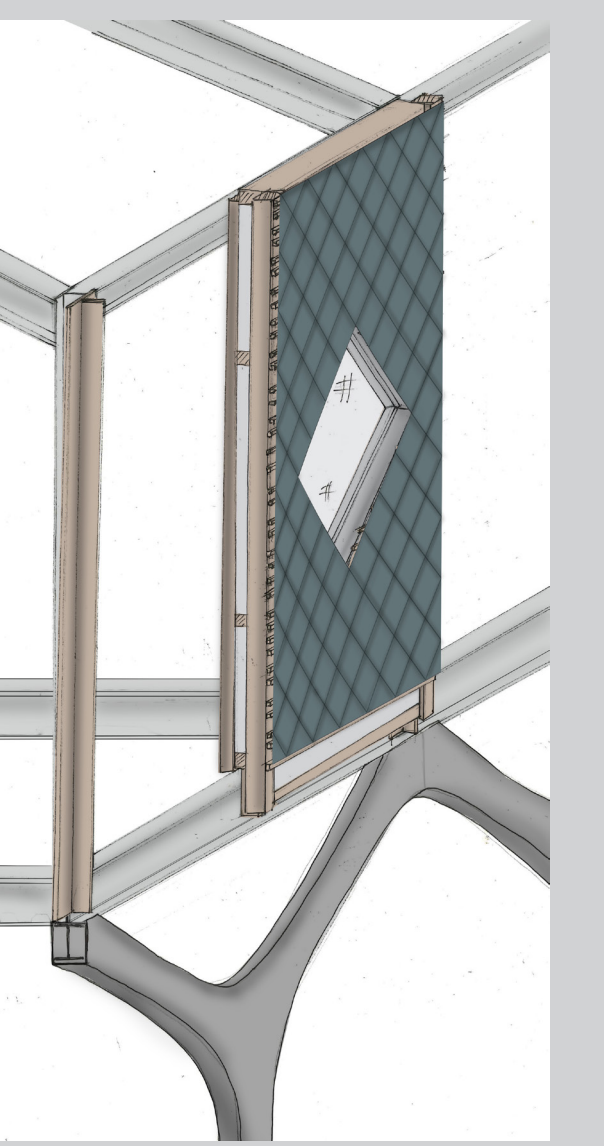
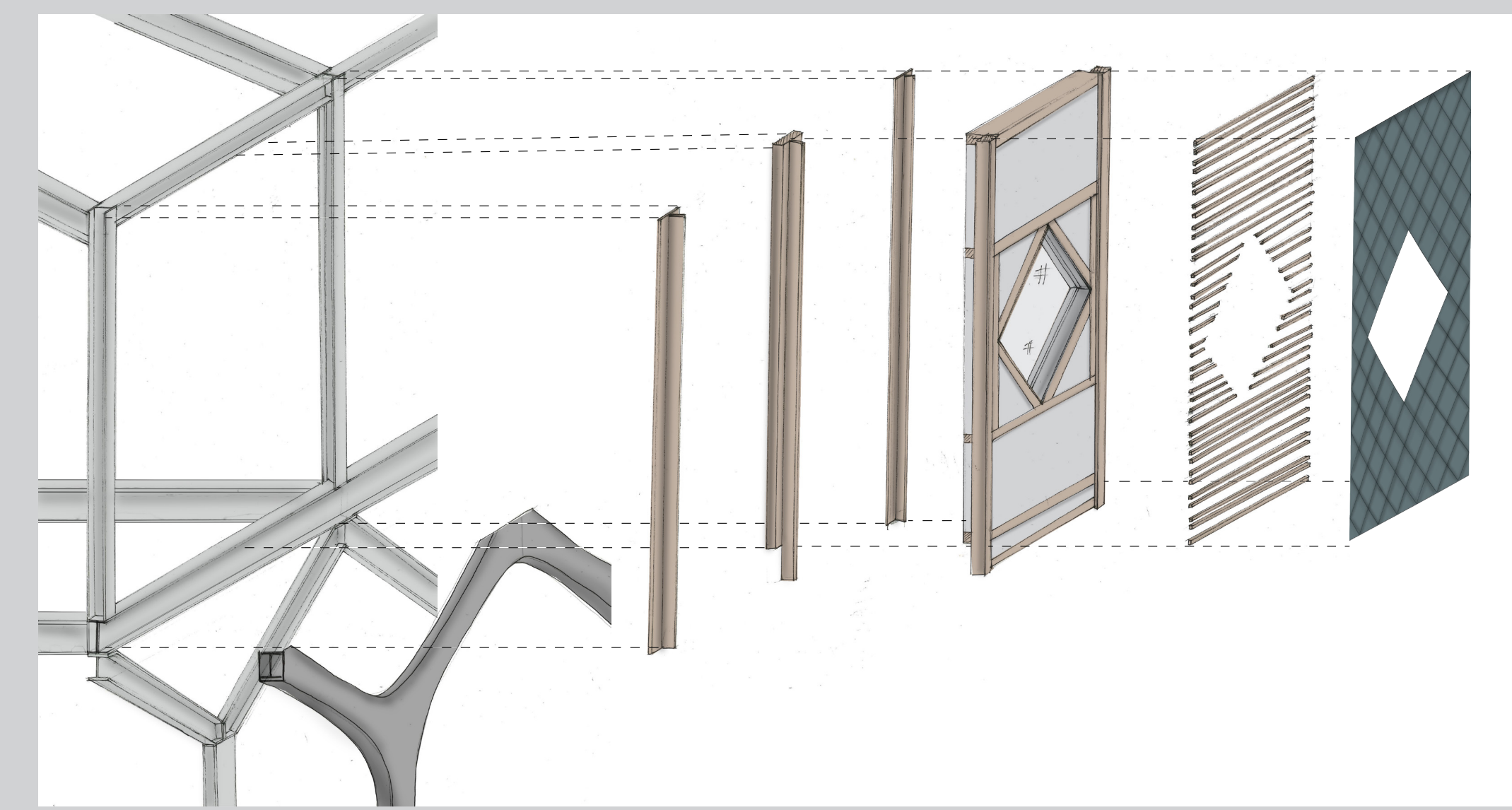
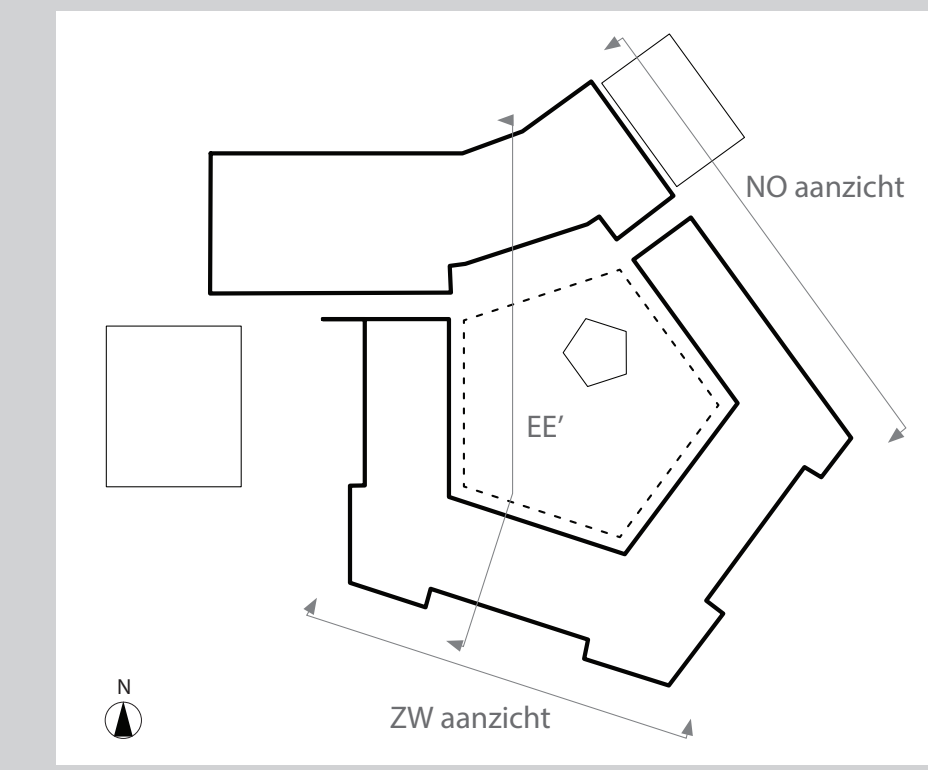


Fase D: Constructie en materiaal



Shape grammar in het ontwerp voor een Montessori lyceum

Explorelab 17
Nina Verkerk 1360450



Langsdoorsnede EE' 1:100 zuidwest - noord over de binnenplaats



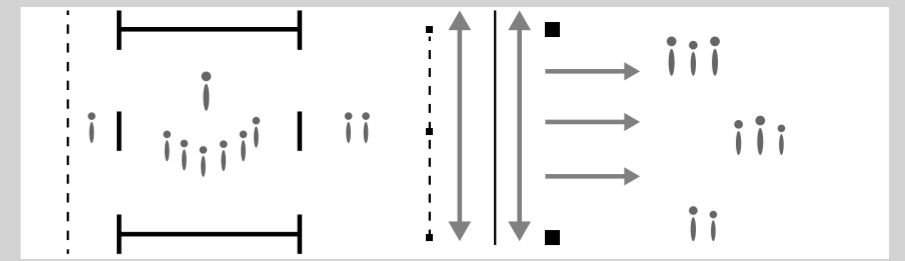
Aanzicht 1:100 zuidwestzijde



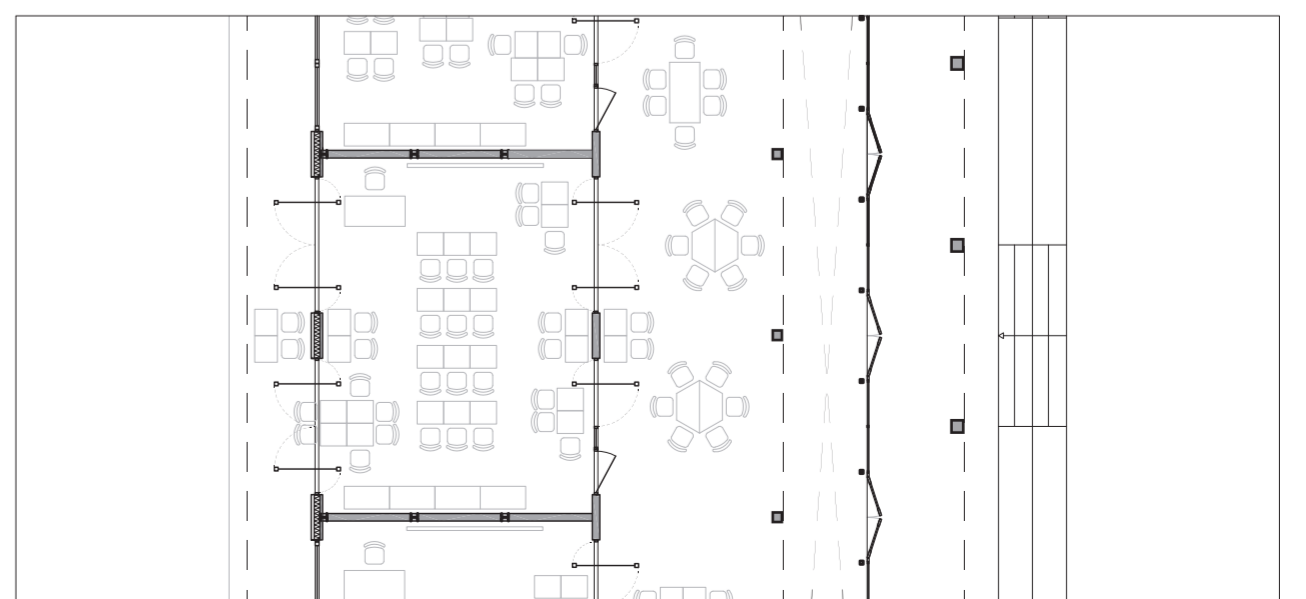
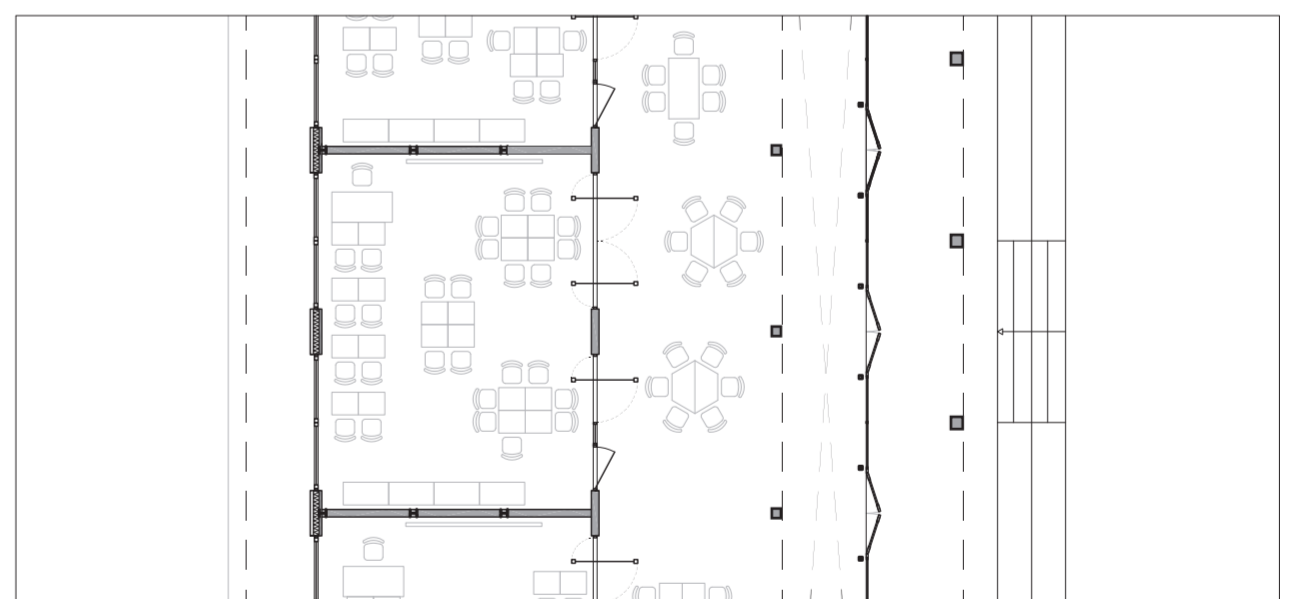
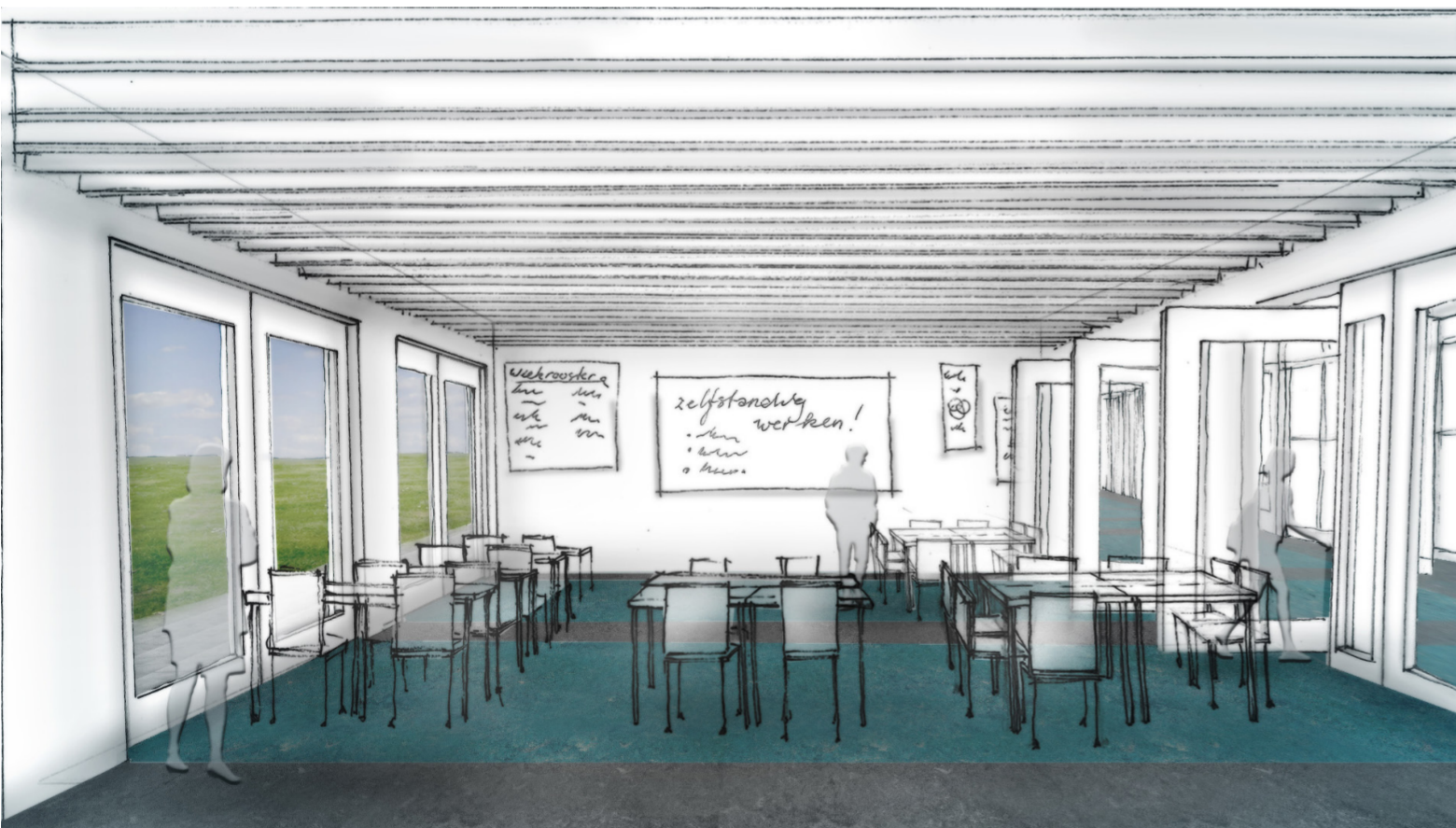
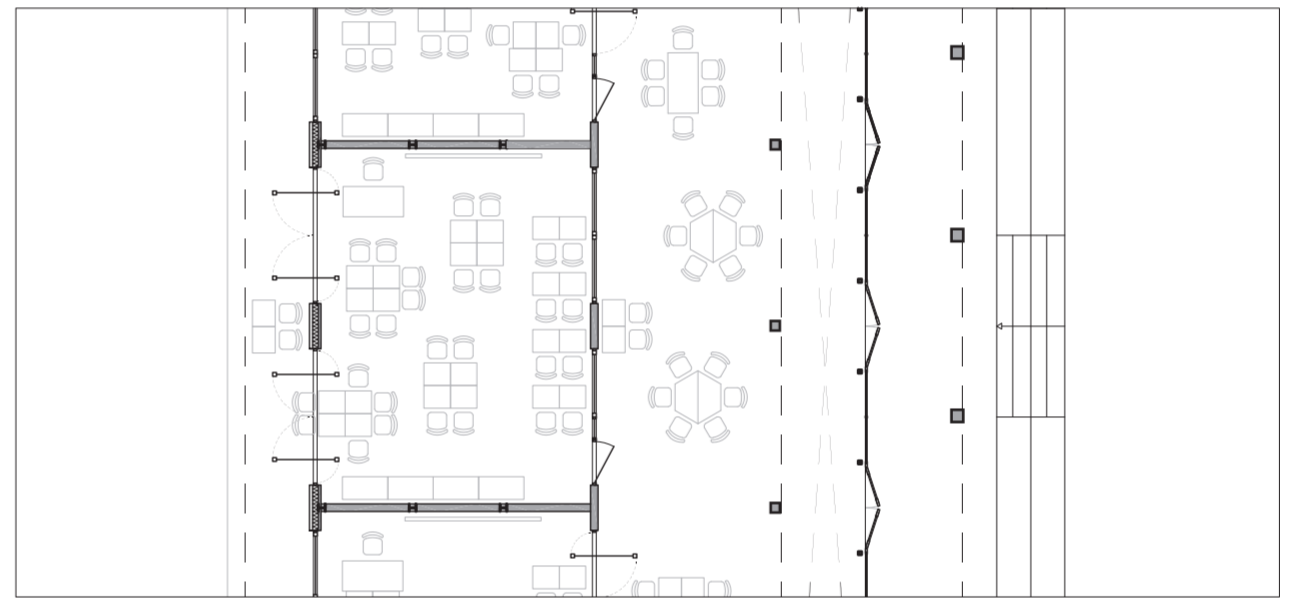
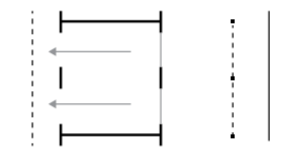
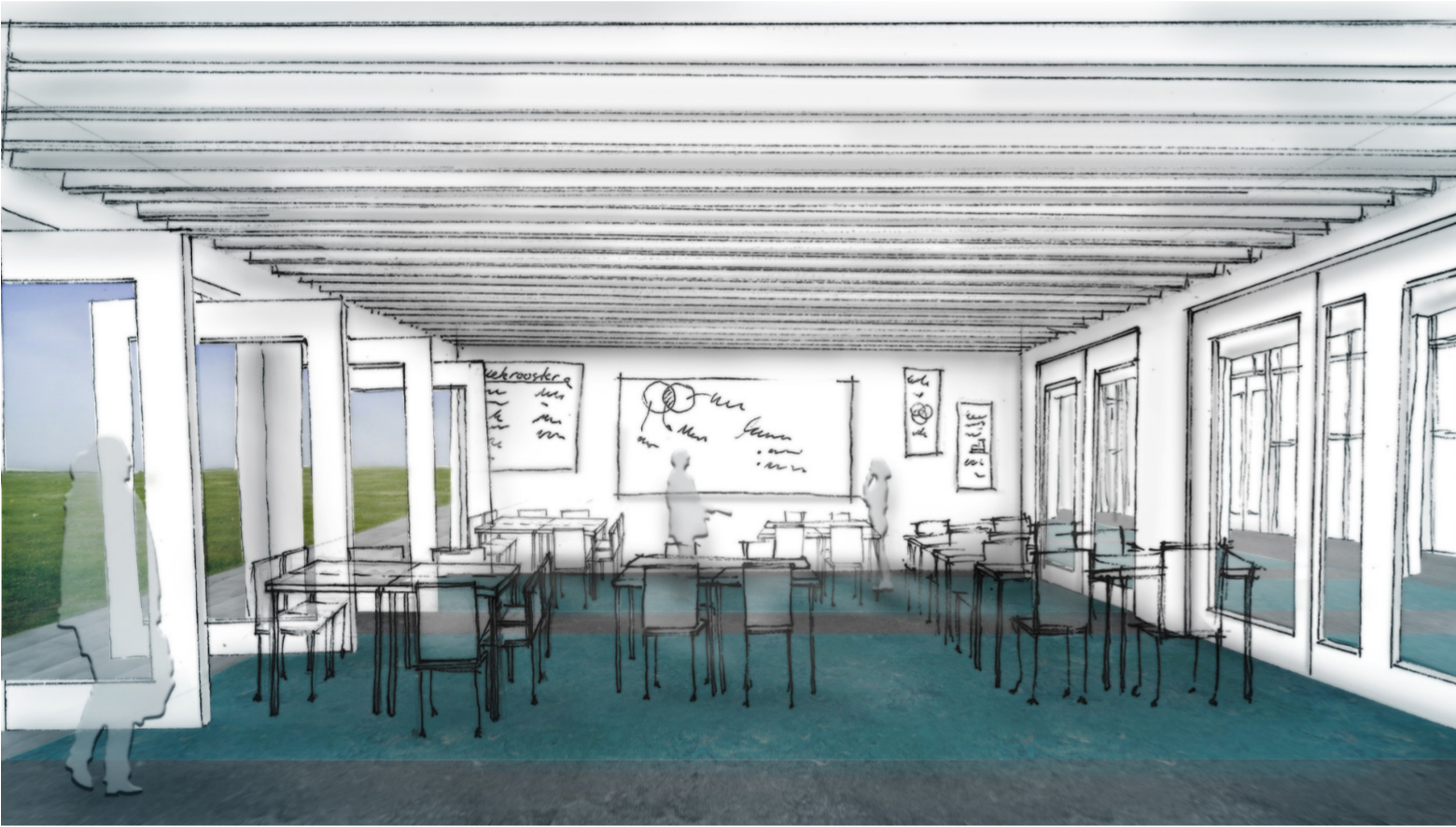
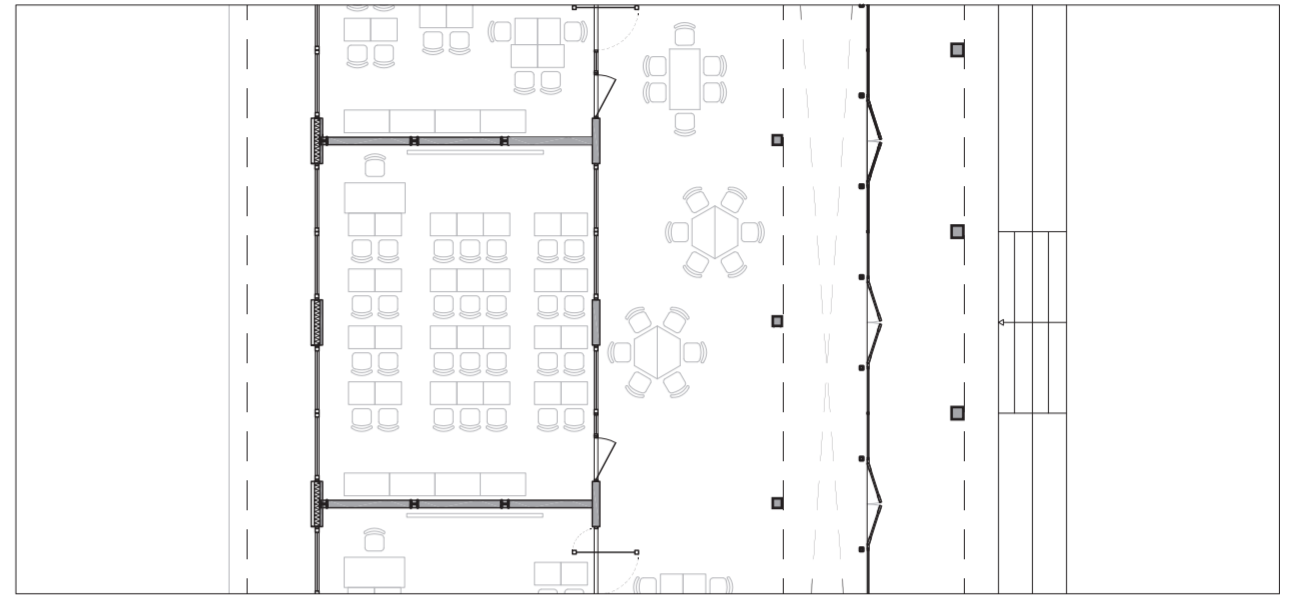
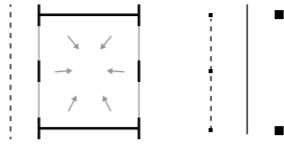
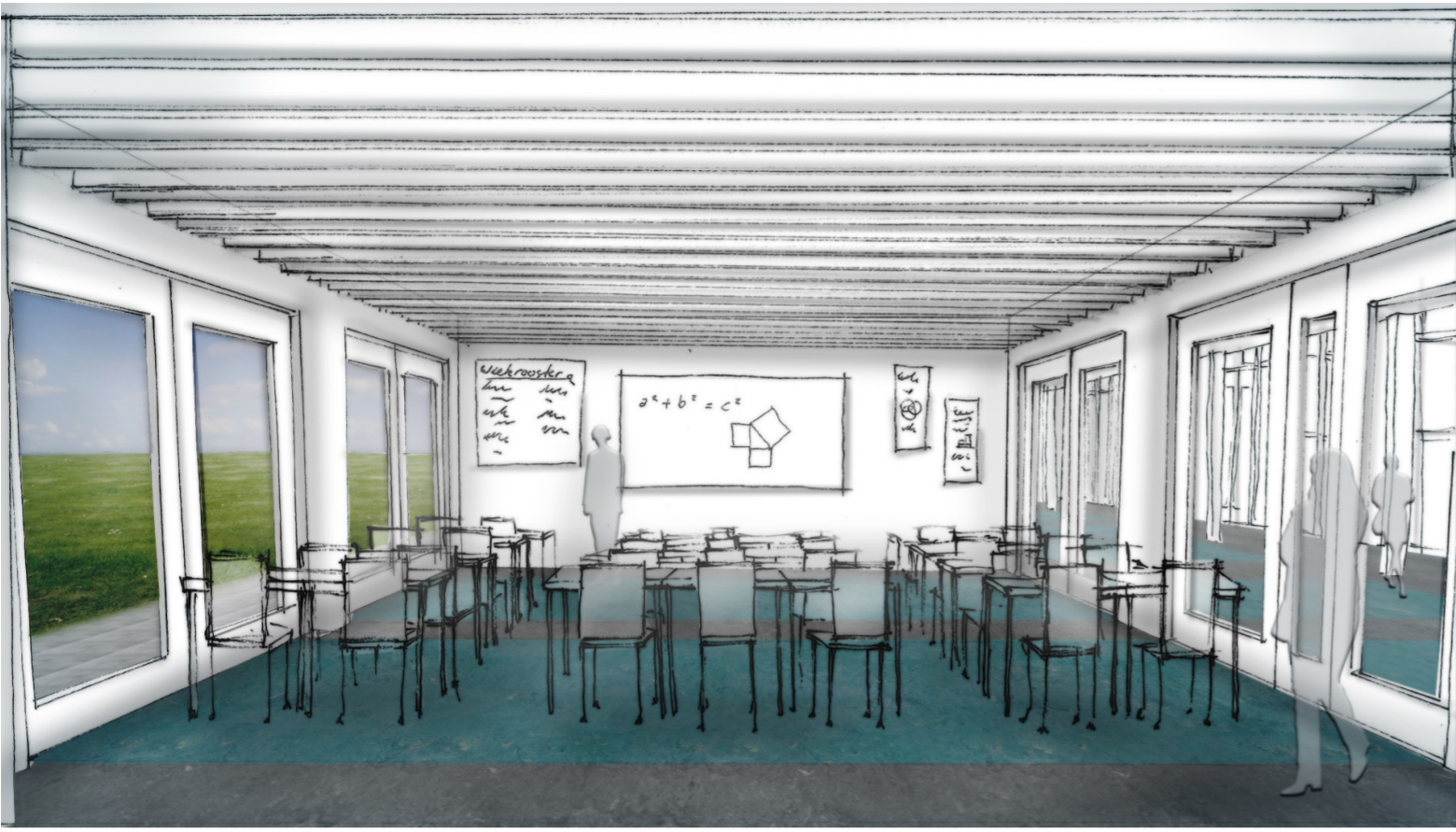
Aanzicht 1:100 noordoostzijde

Shape grammar in het ontwerp voor een Montessori lyceum

Explorelab 17
Nina Verkerk 1360450

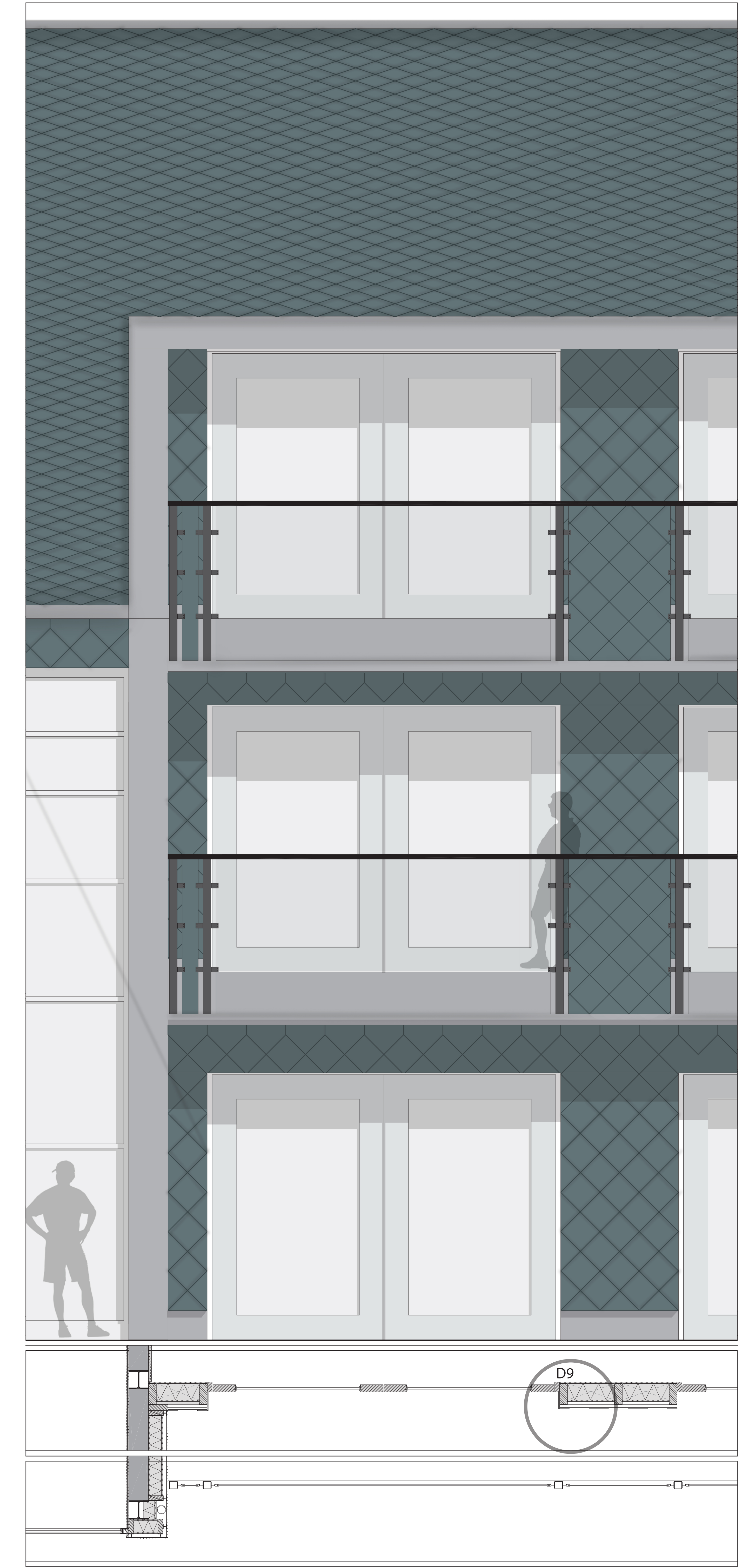
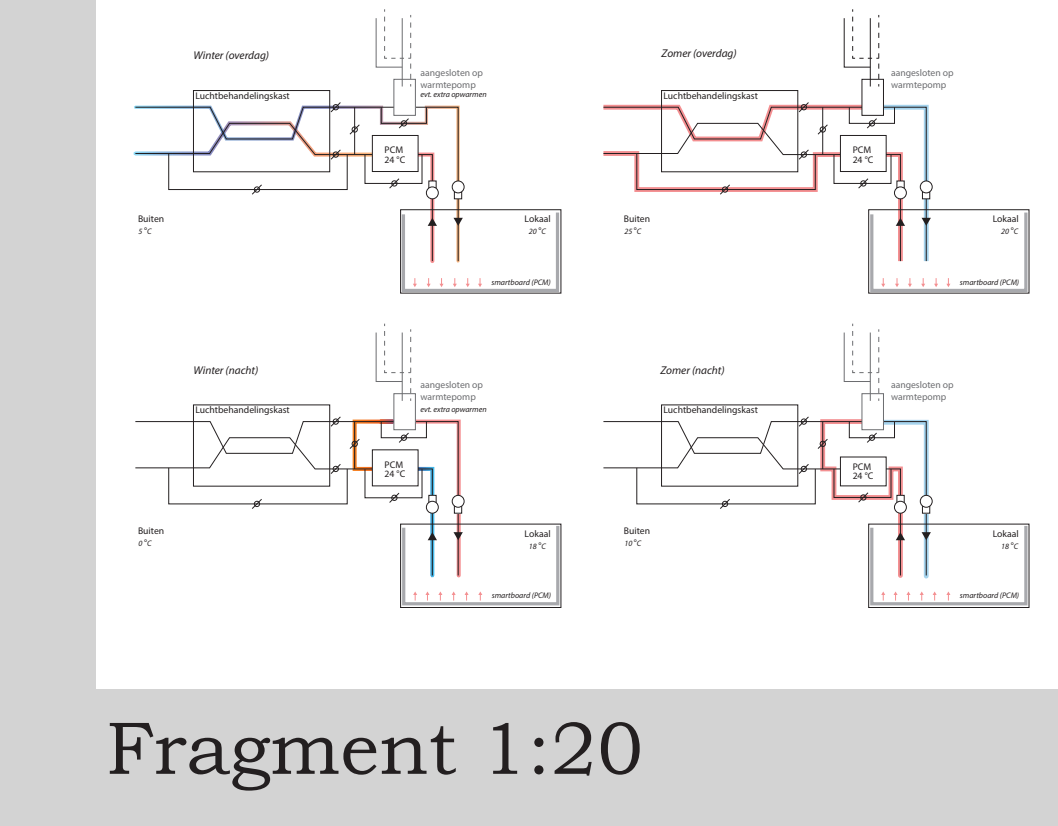
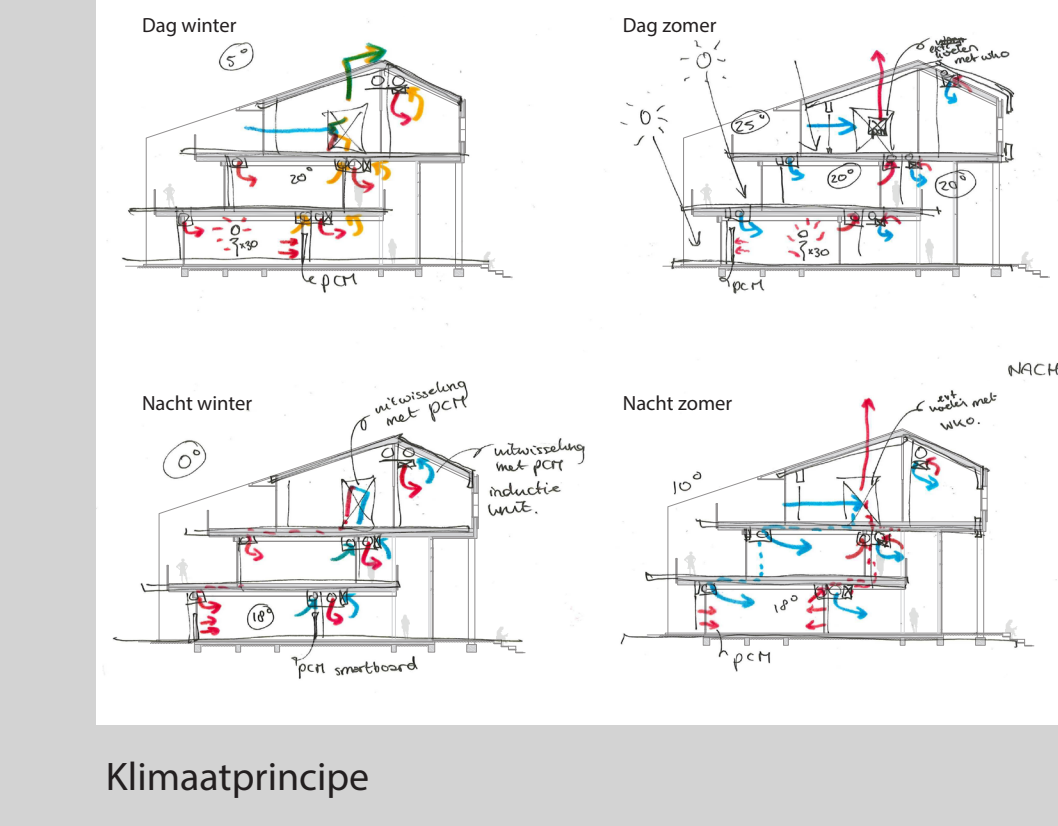
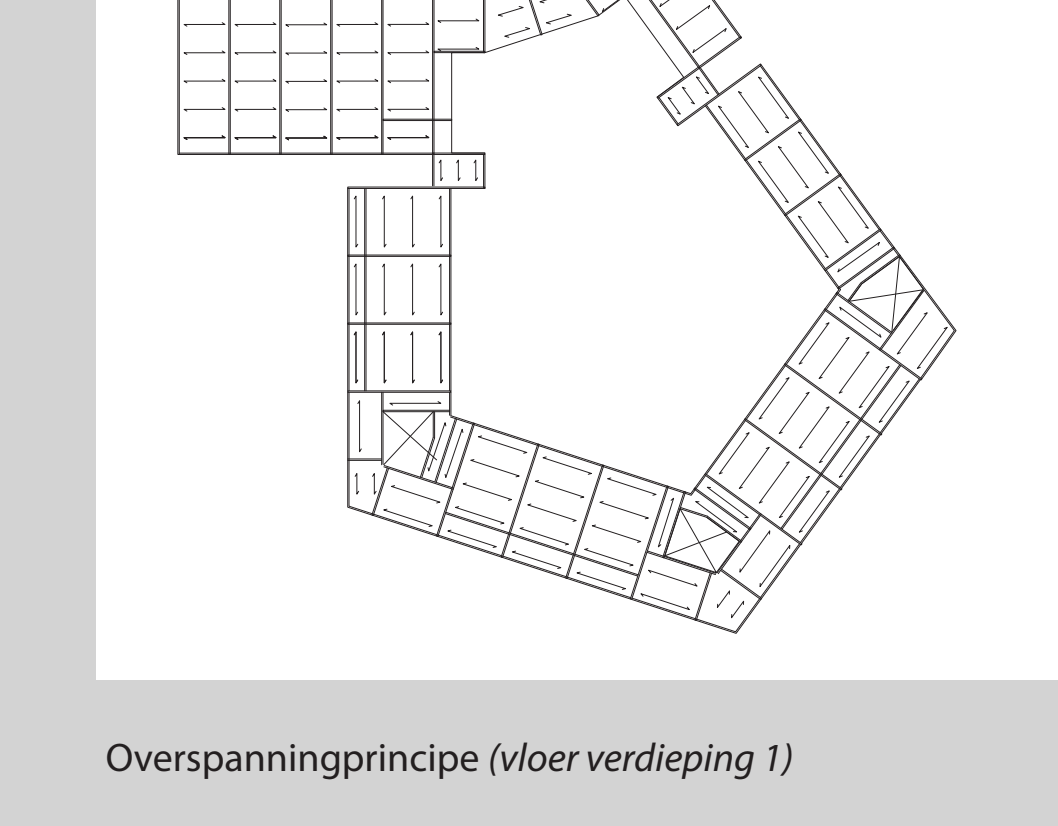
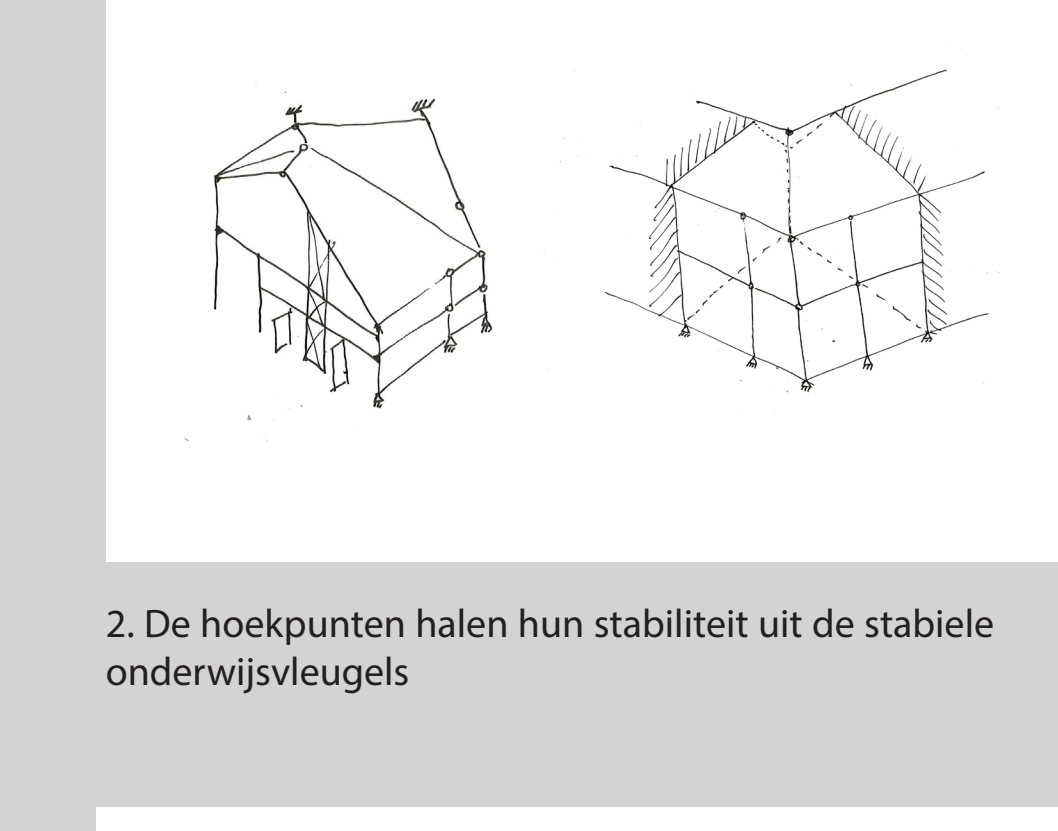
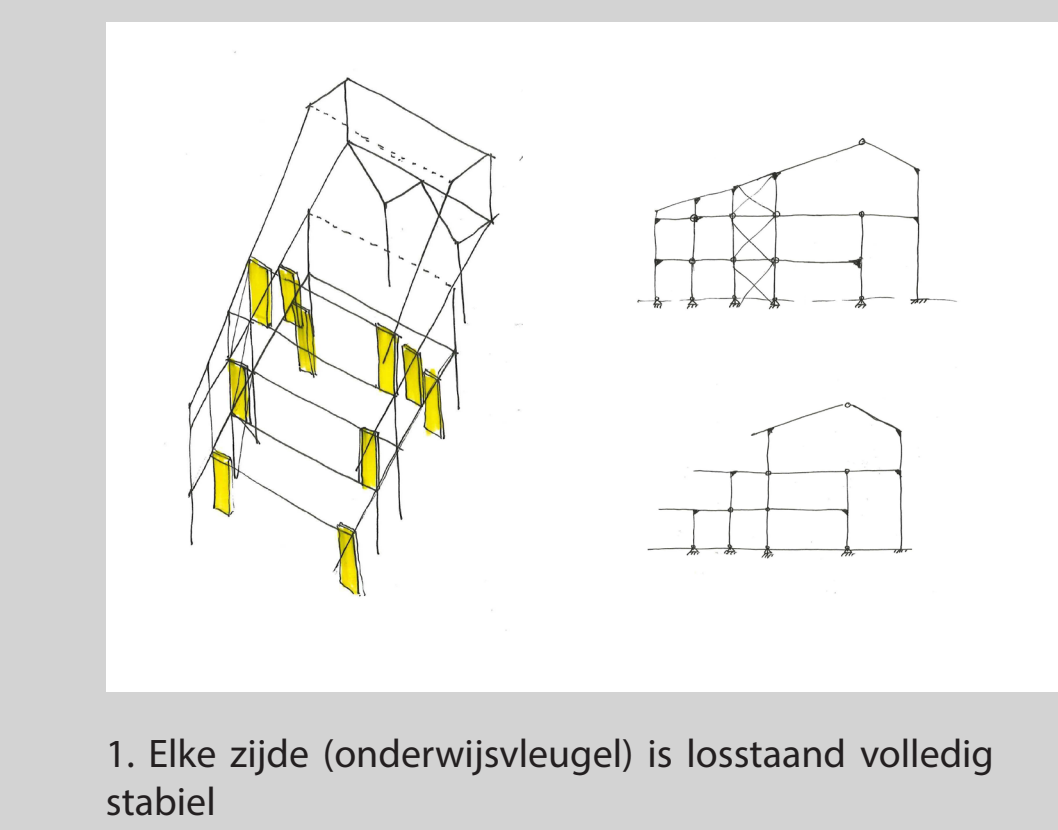
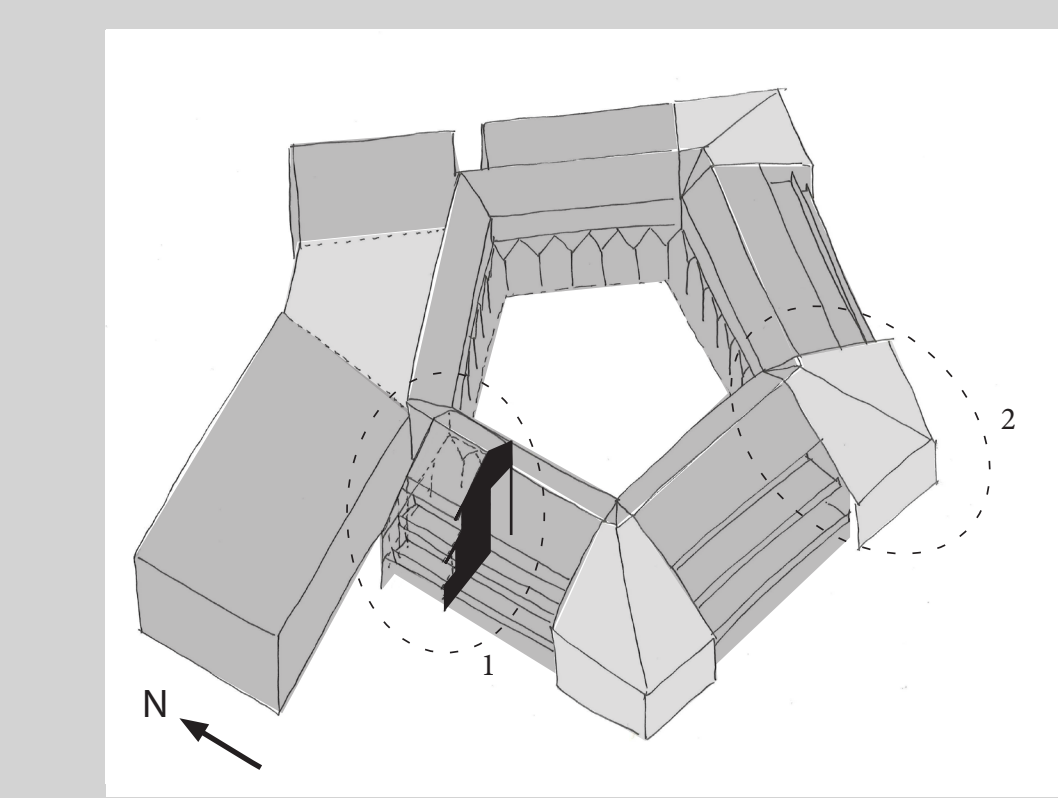


reflectie, klassikaal, samenwerken, bufferzone, oefenen

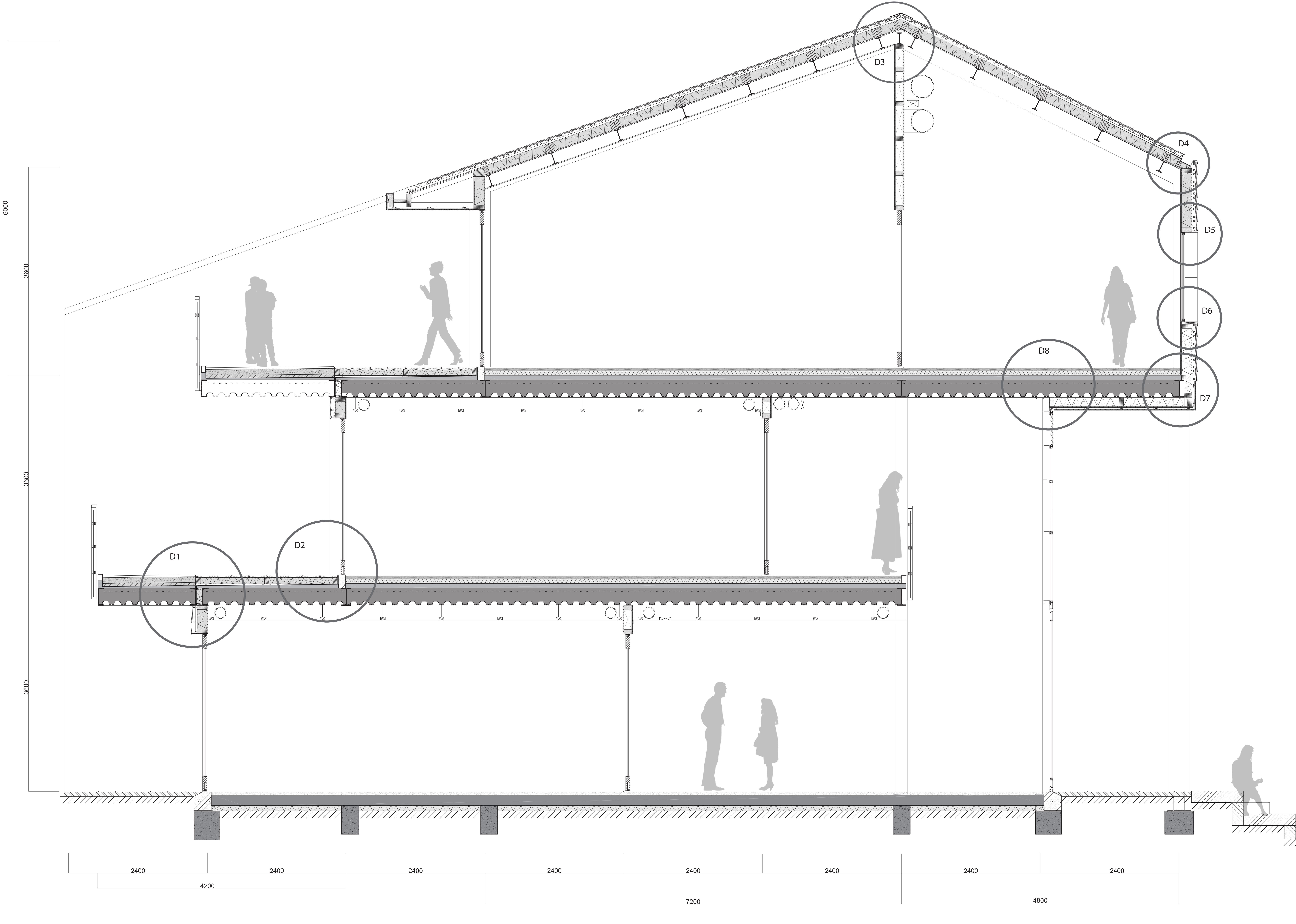


Shapegrammar in het ontwerp voor een Montessori lyceum

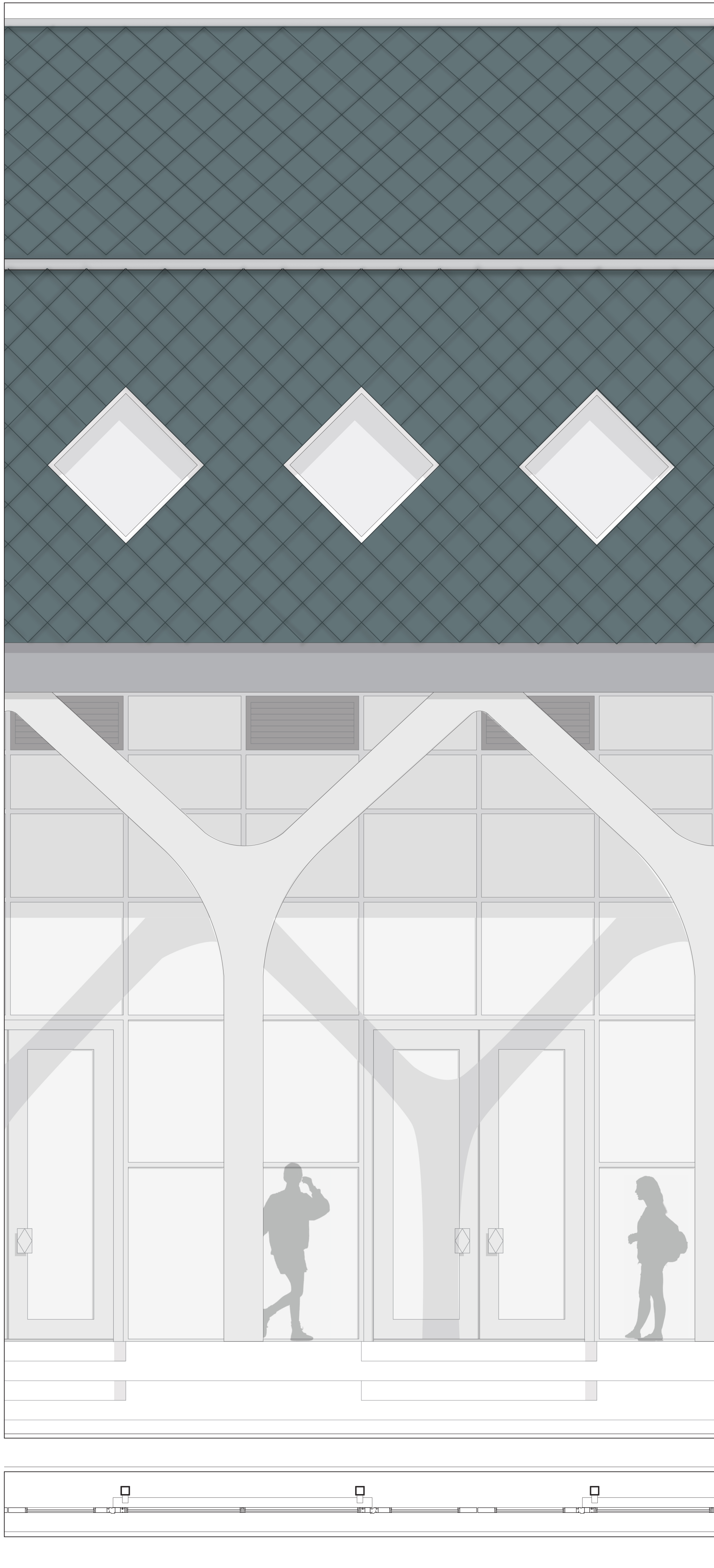
Explorielab 17
Nina Verkerk 1360450



Fragment horizontale doorsnede 1:20: Verdieping 1



Doorsnede CC 1:20



Fragment horizontale doorsnede 1:20: Begane grond

