



# Volta - Cultural center

A.R.S. Lachman - 4672259  
A.R.S.Lachman@student.tudelft.nl  
Delft University of Technology  
AR3MET105 A Matter of Scale (2023/24)

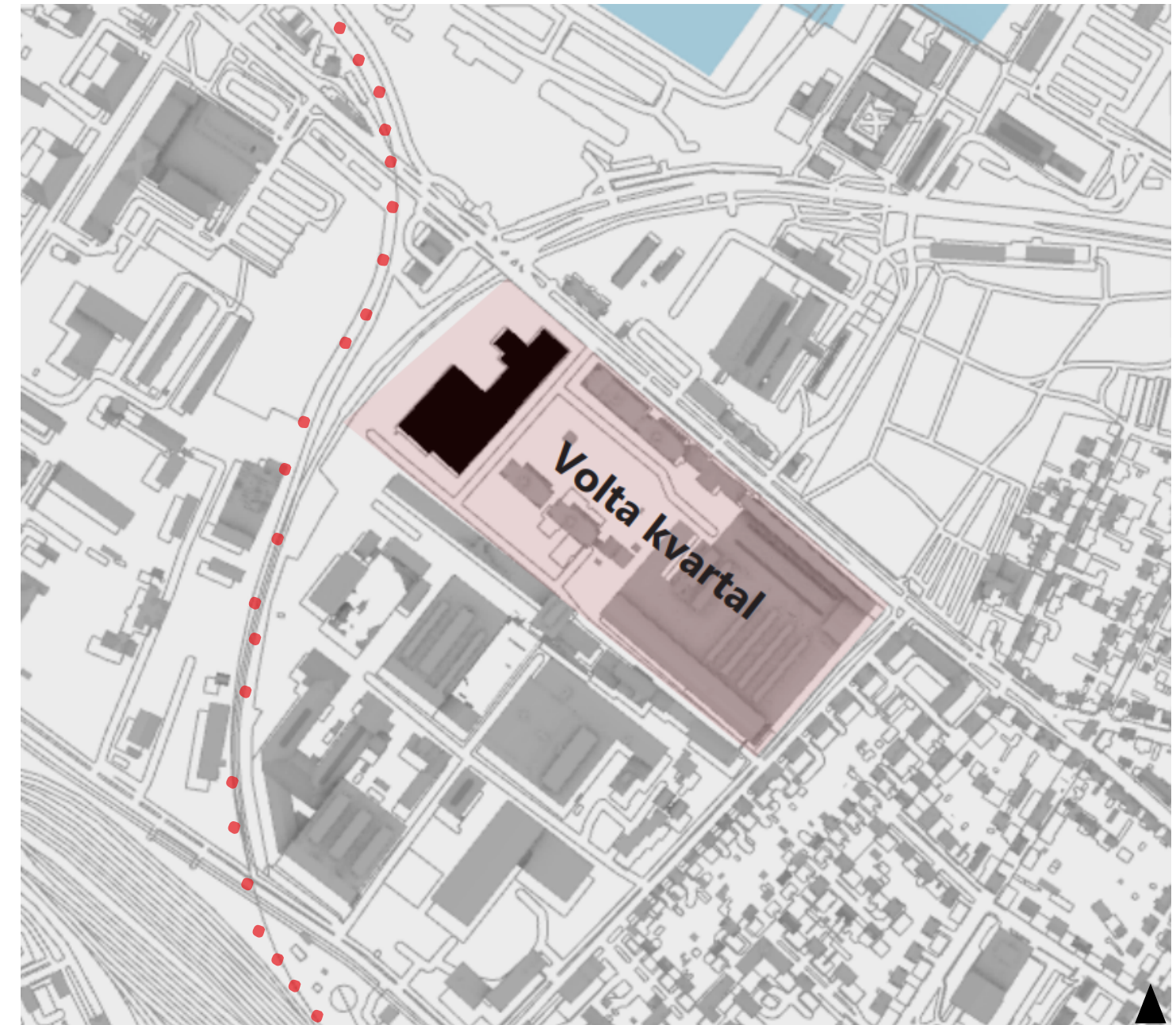
# Kalamaja

Means 'Fish House'

The Bay of Tallinn

Cultural importance

Volta & Krulli Factory Quarters





# History Volta Factory

Manufacturer of generators and  
engines

Pride of Kalamaja



# Mix between new and old

Ruins & concrete rot and  
hazardous conditions

Social & technical safety concerns +  
underutilization

"Kalamaja Days" social concept

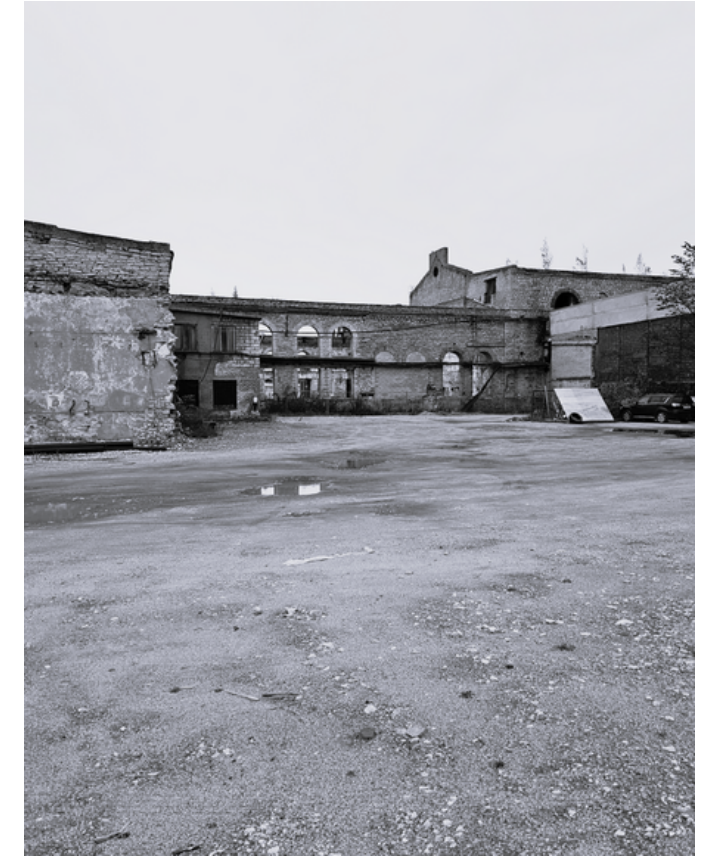
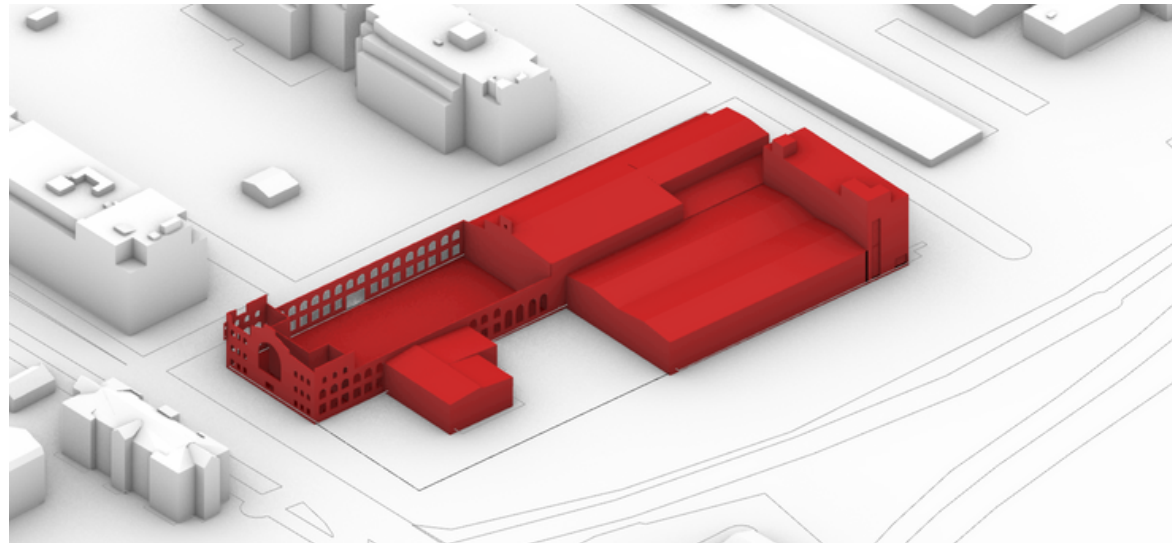




# Heritage

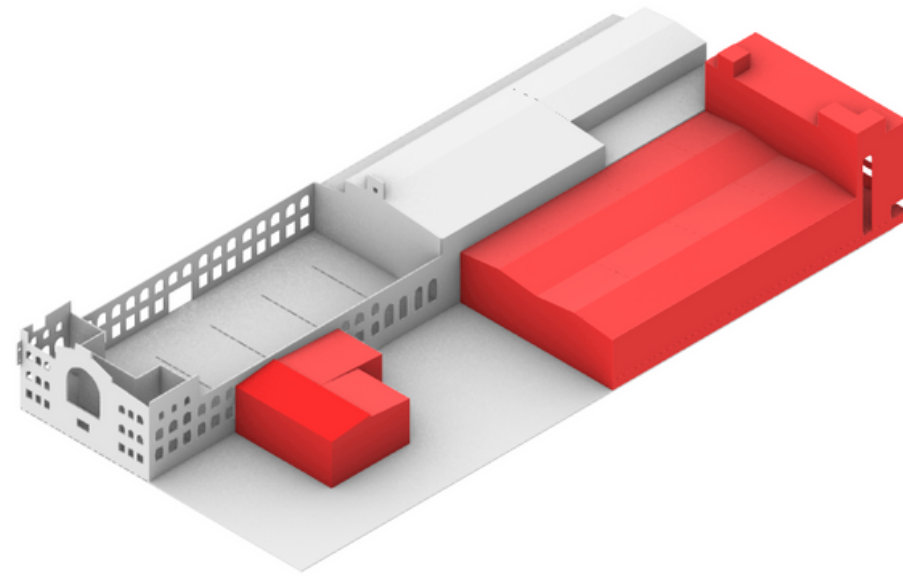
Limestone walls

Basilica-type arches





# Compromised structures

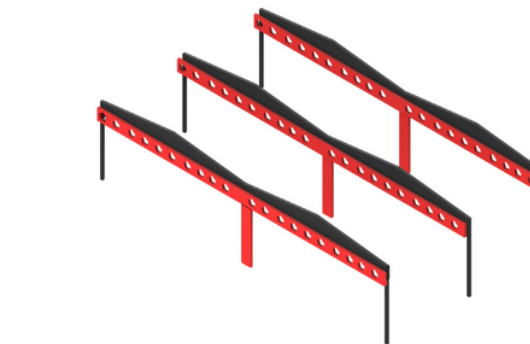


Concrete rot

Danger of collapse

Incongruity

Hiding Heritage





# **Volta neighbourhood**

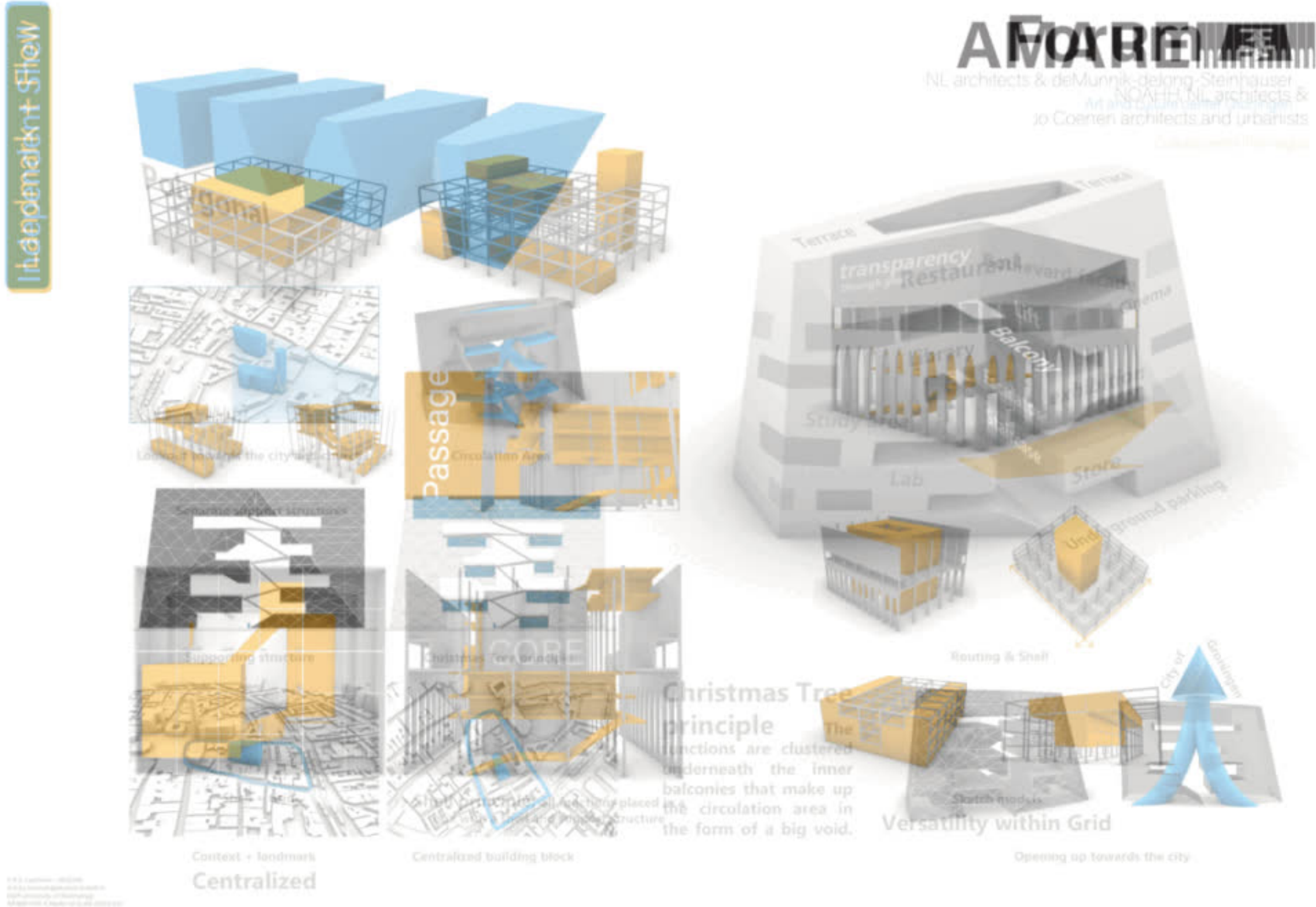
Current state & vision

Preserving heritage in a  
modern way.

Seaside residential area



# Casestudies





**Revitalizing vacant post industrial heritage and urban development  
through restoration and renovation.**

Transformation of the Volta Factory into a cultural center

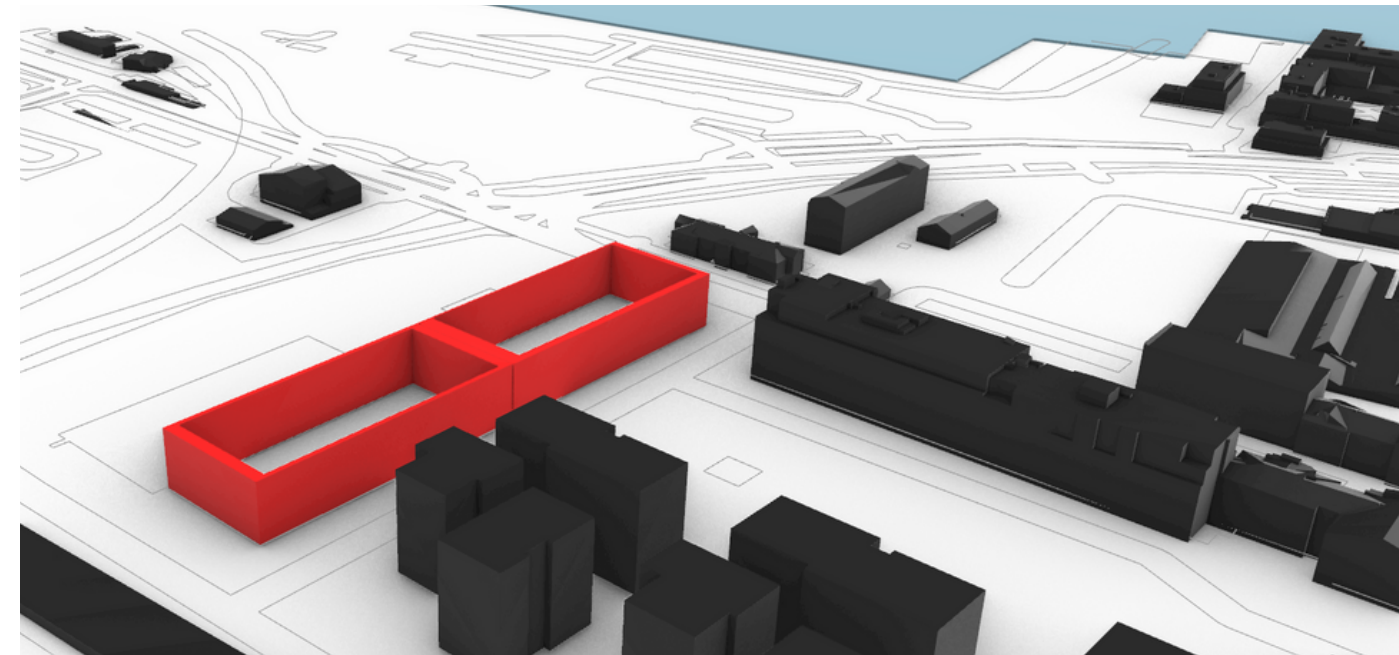
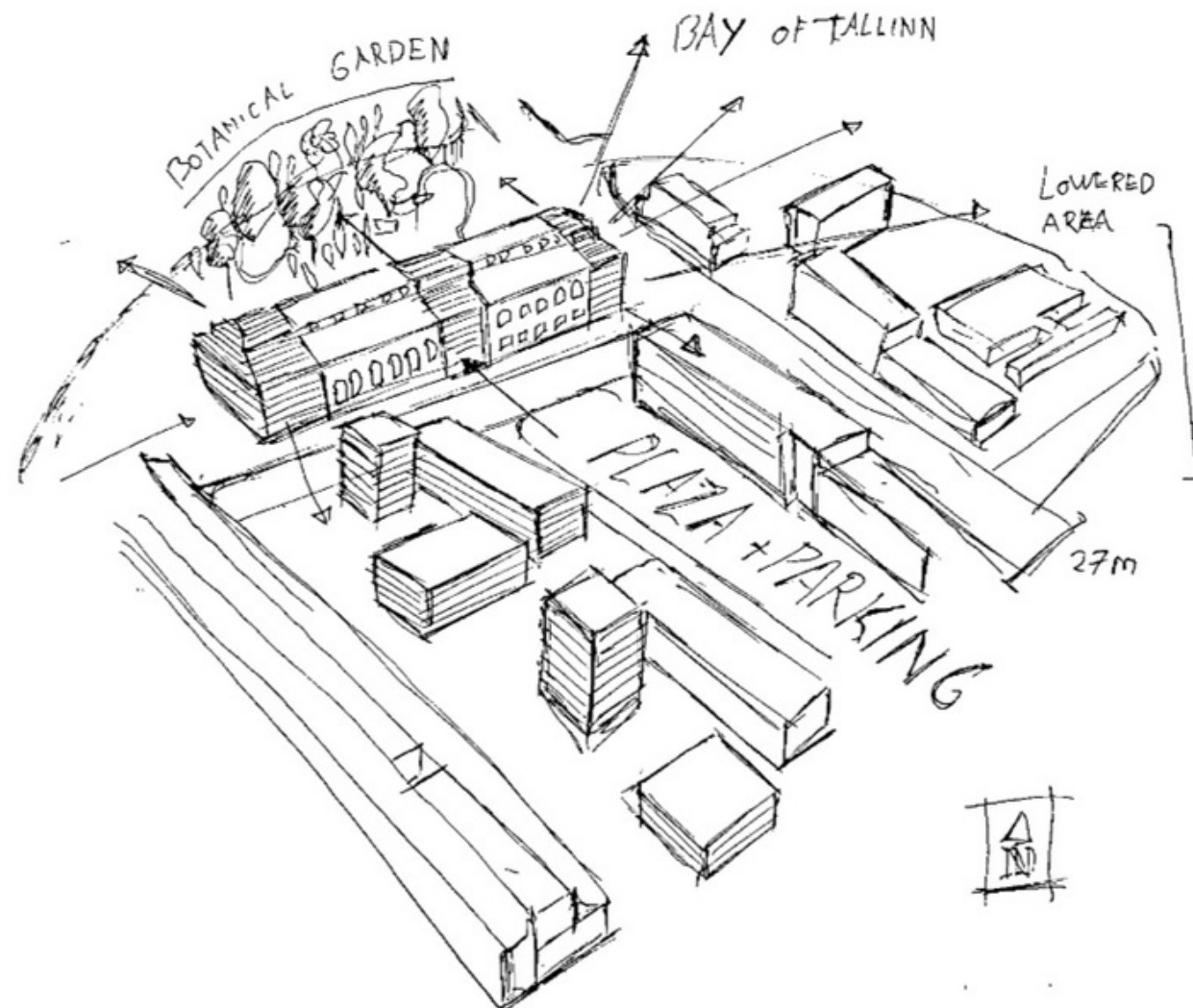
# Cultural center

A mixed used building

Event centre and recollection space

For all age groups

To study, read and work

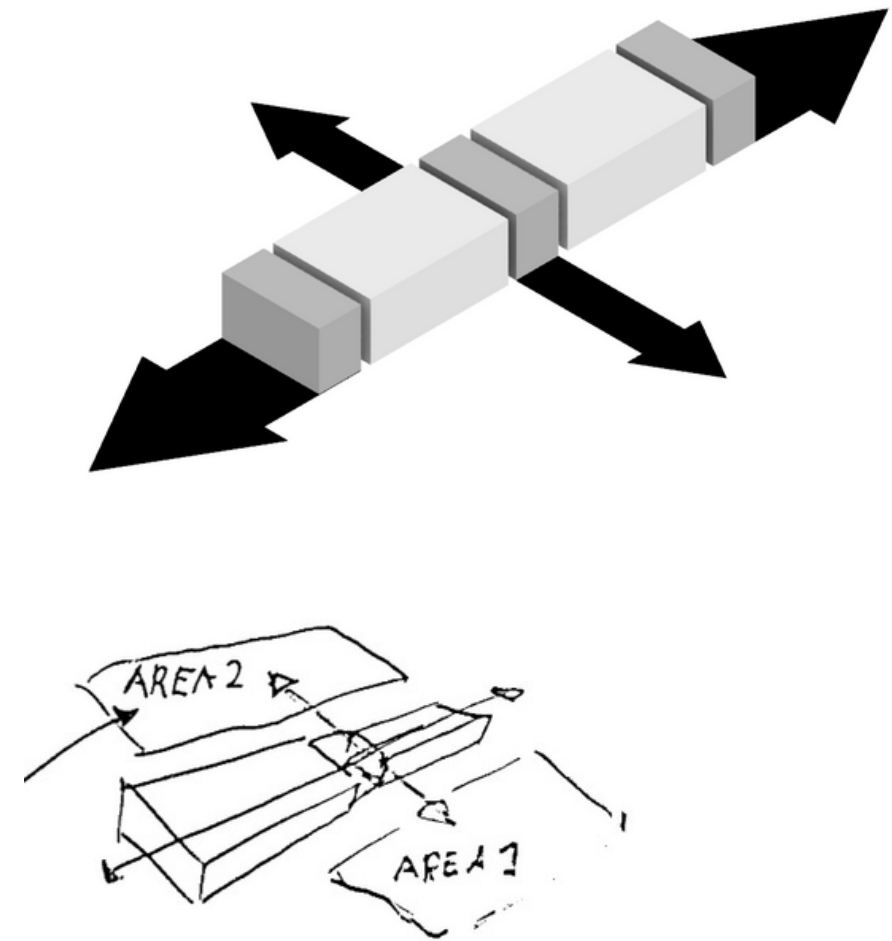
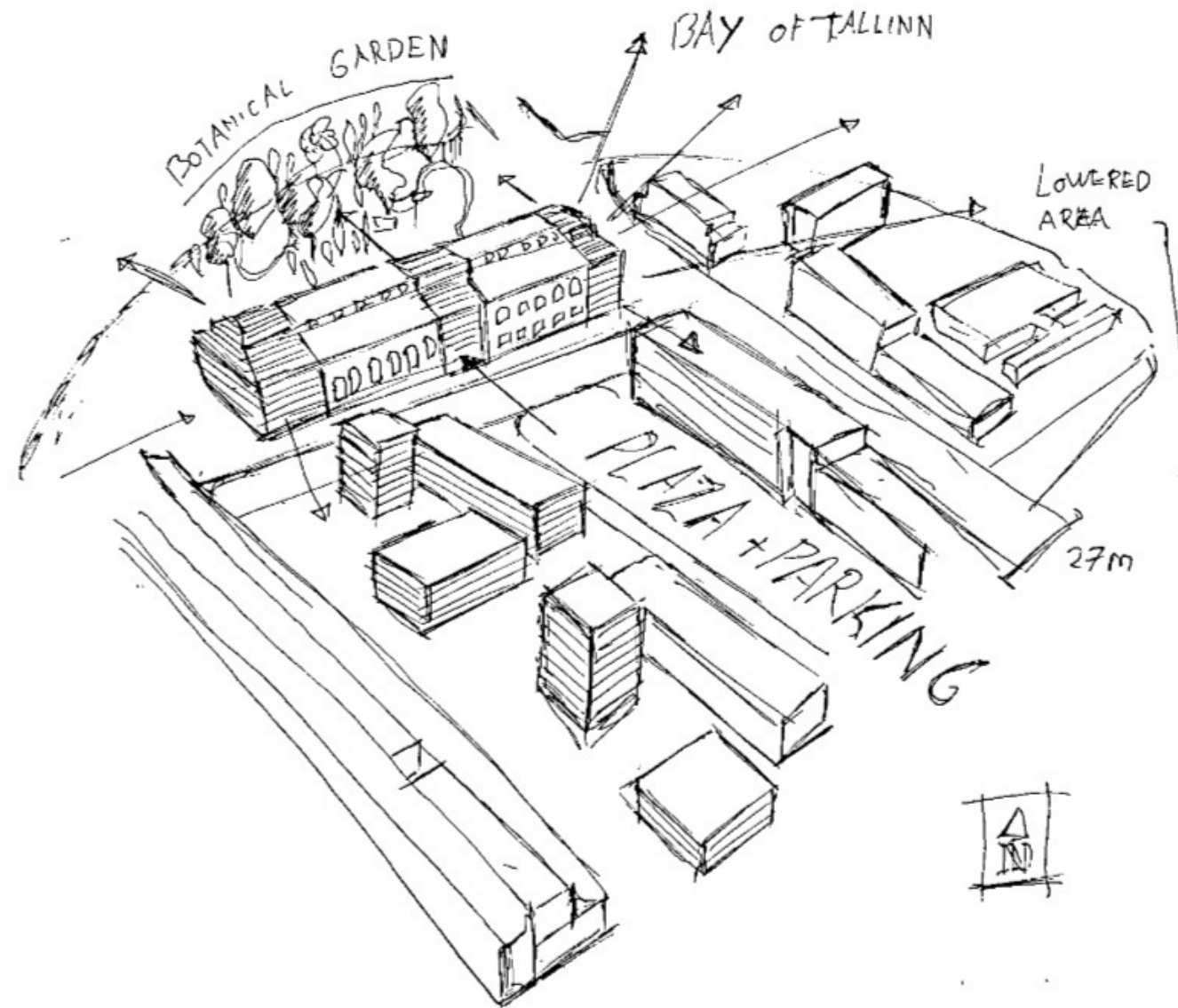




# Crack the boundary

Add perpendicular axis  
to connect areas

Improve flow by  
connecting areas +  
boost social cohesion



CONNECTION:

VOLTA NEIGHBORHOOD

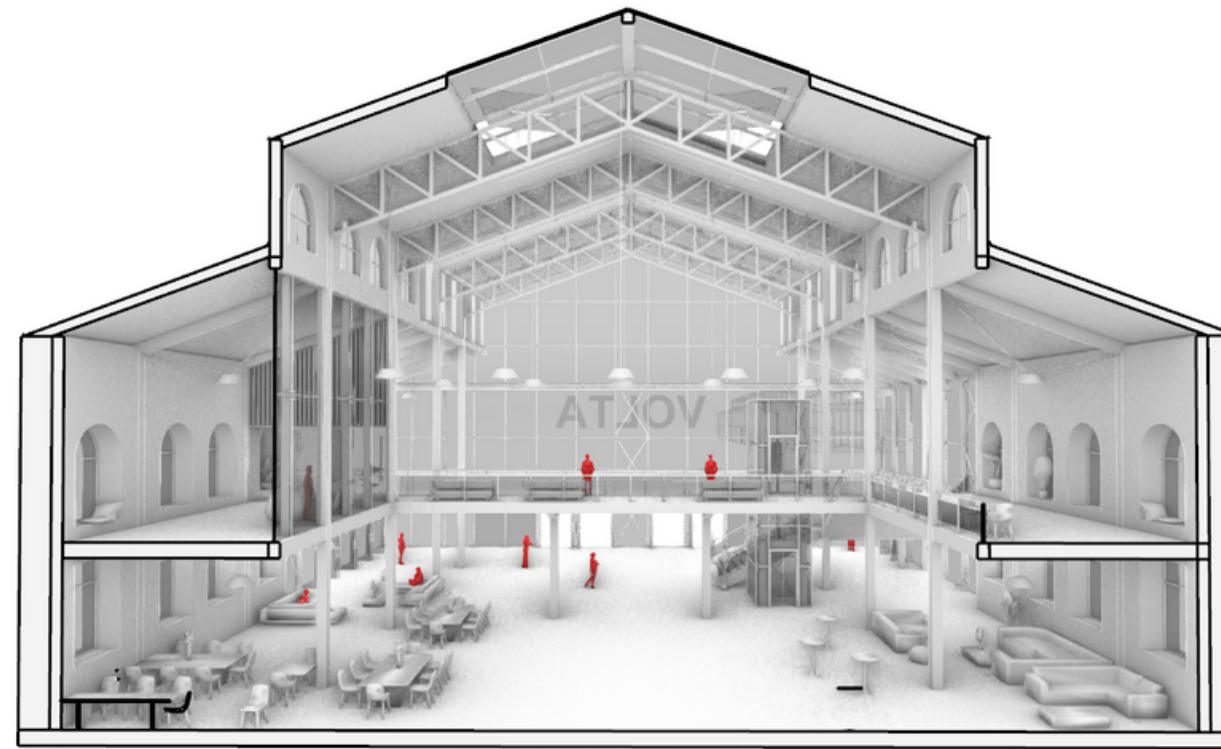
WITH AREA 2 = SAFETY

UTILIZATION

# Cake principle

Open up towards the  
context

Natural light +  
hierarchy (social and  
less social split)

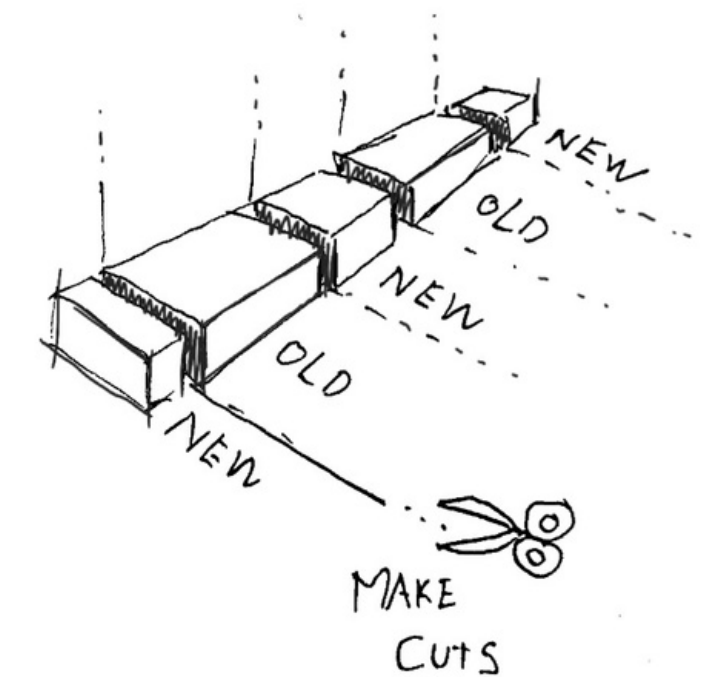
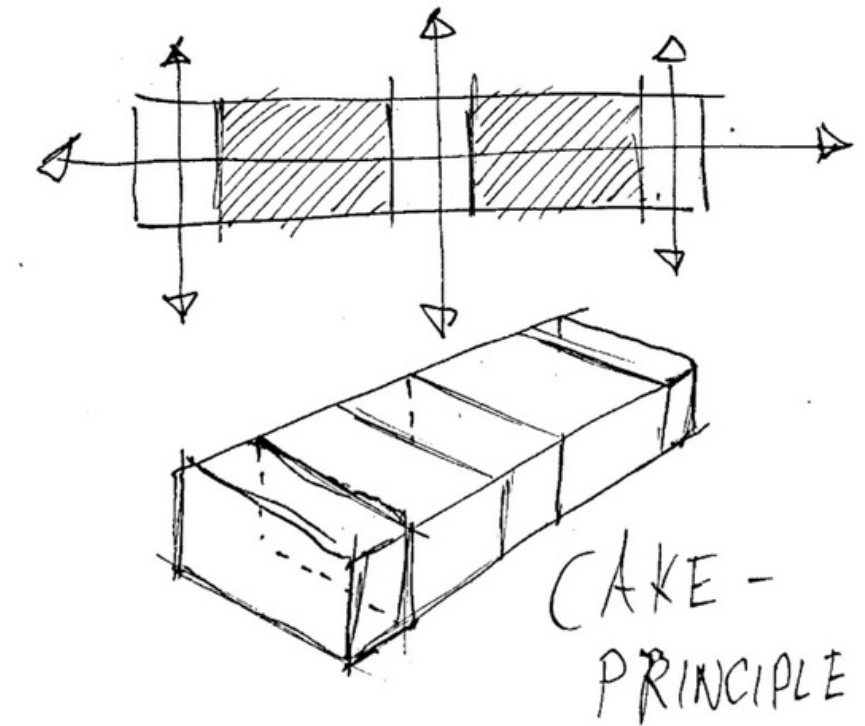


Seaside spectacle +  
culture

Botanical +  
Communal garden

Volta Neighbourhood

Krulli Quarter  
connection

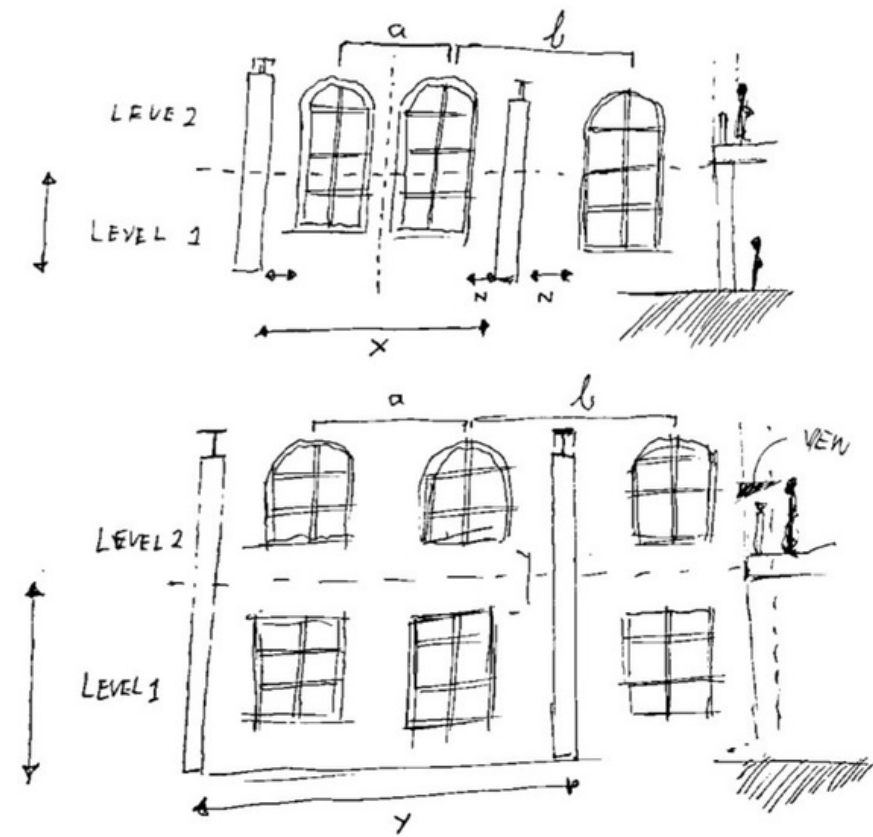
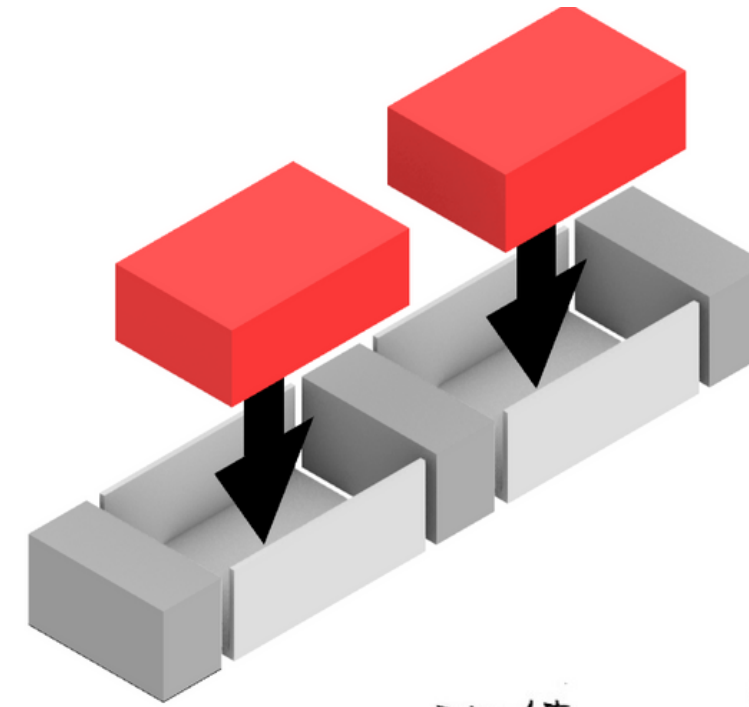
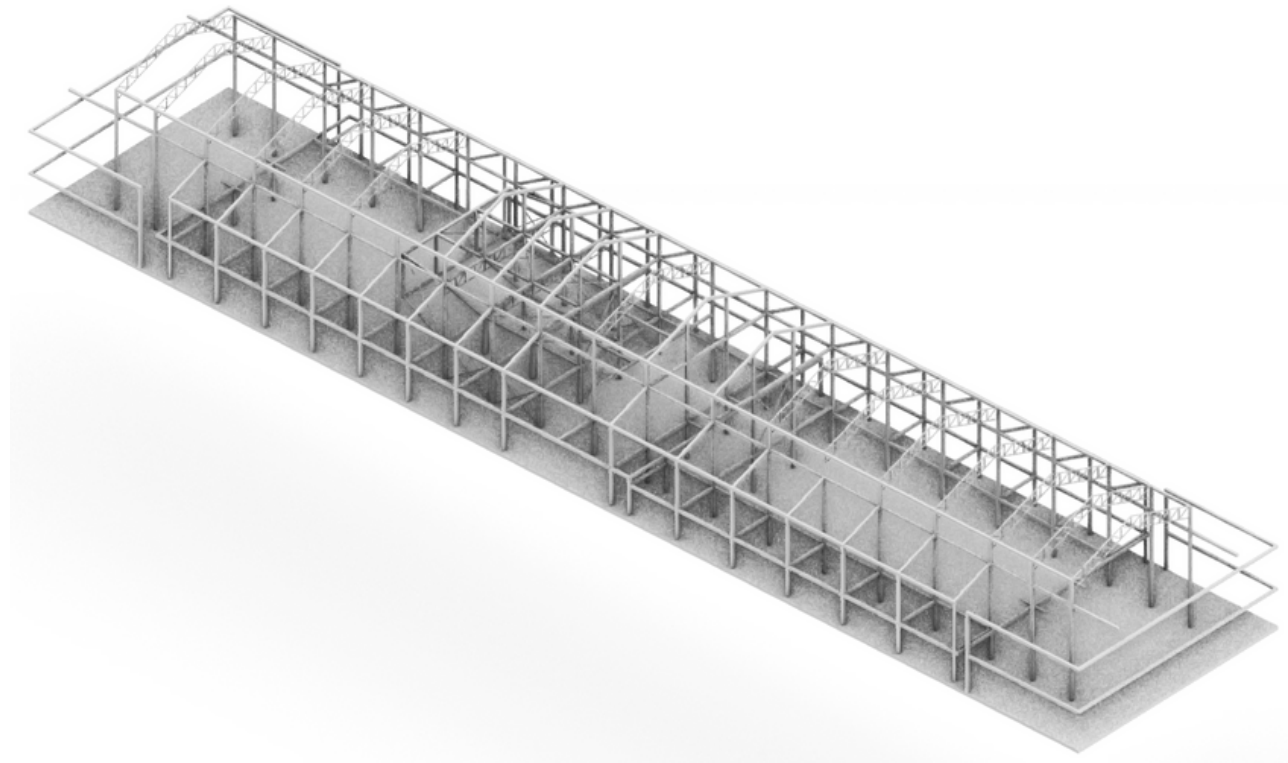




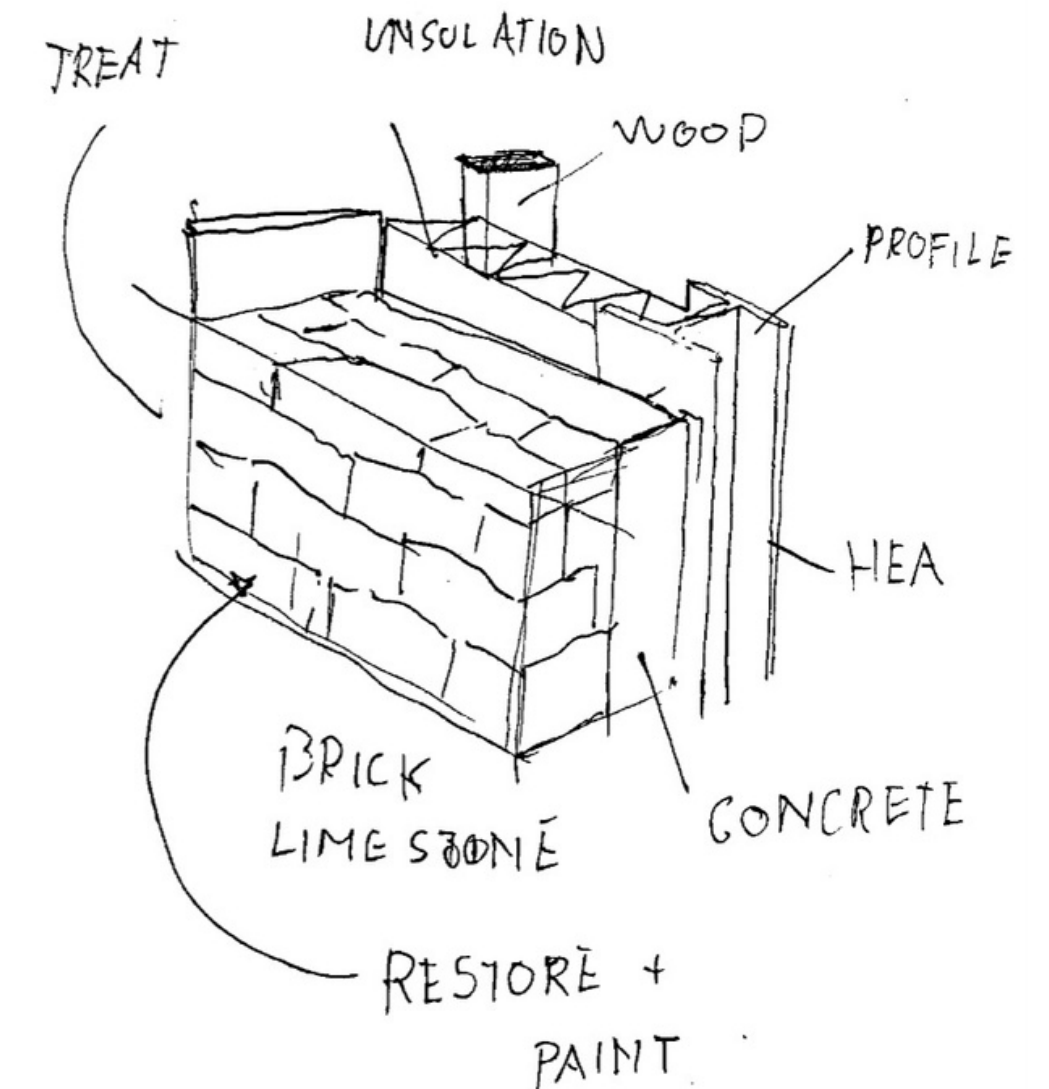
# Box in a Box principle

Preserve heritage and  
connect to it.

Adjusted support frame  
per section



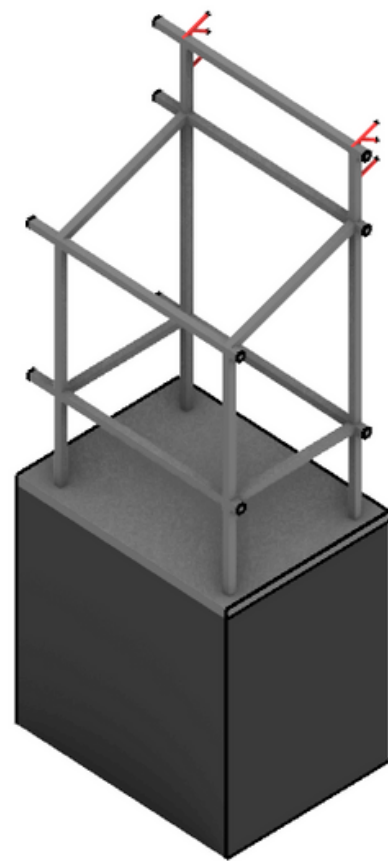
Frame compliments existing walls



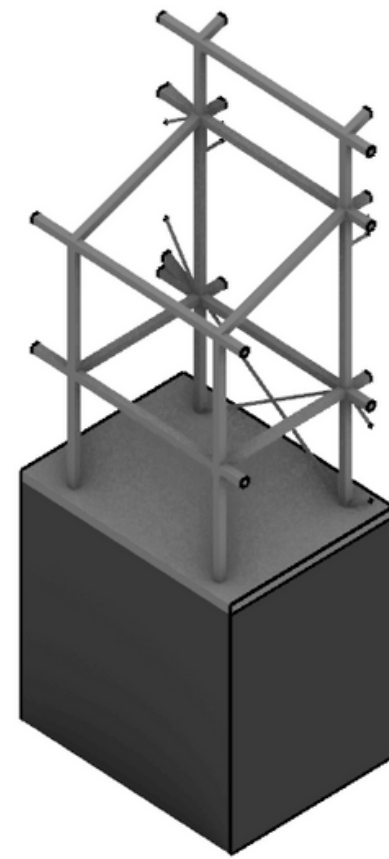
# Flexible structure

Divisible walls and grid

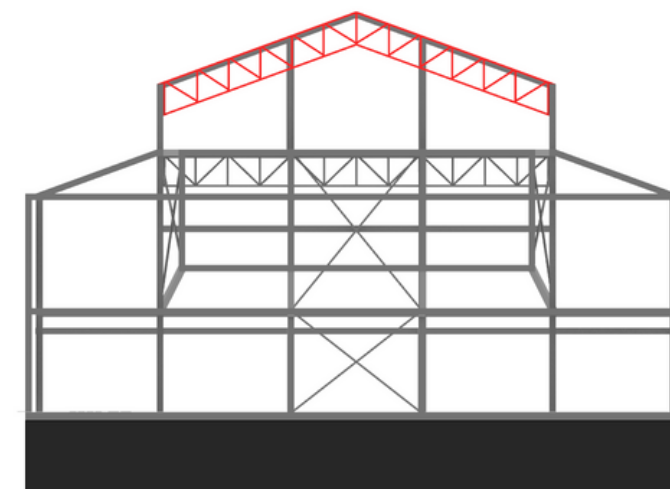
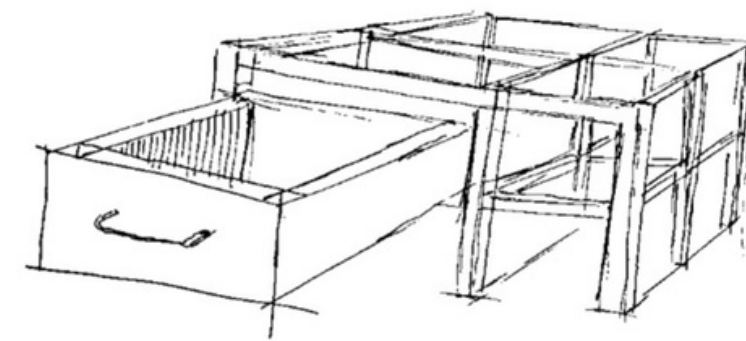
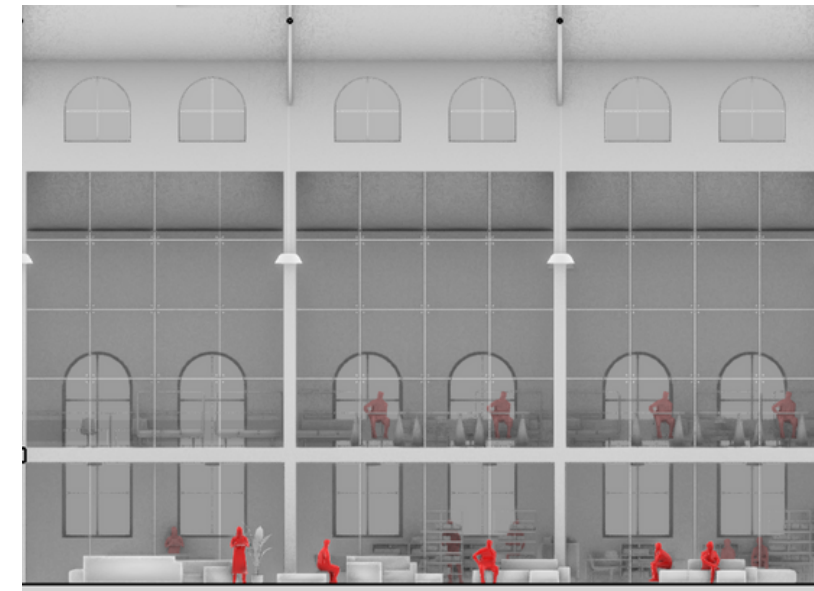
"Chest of drawers principle"



7600 x 5530



6600 x 5530



17,7 m

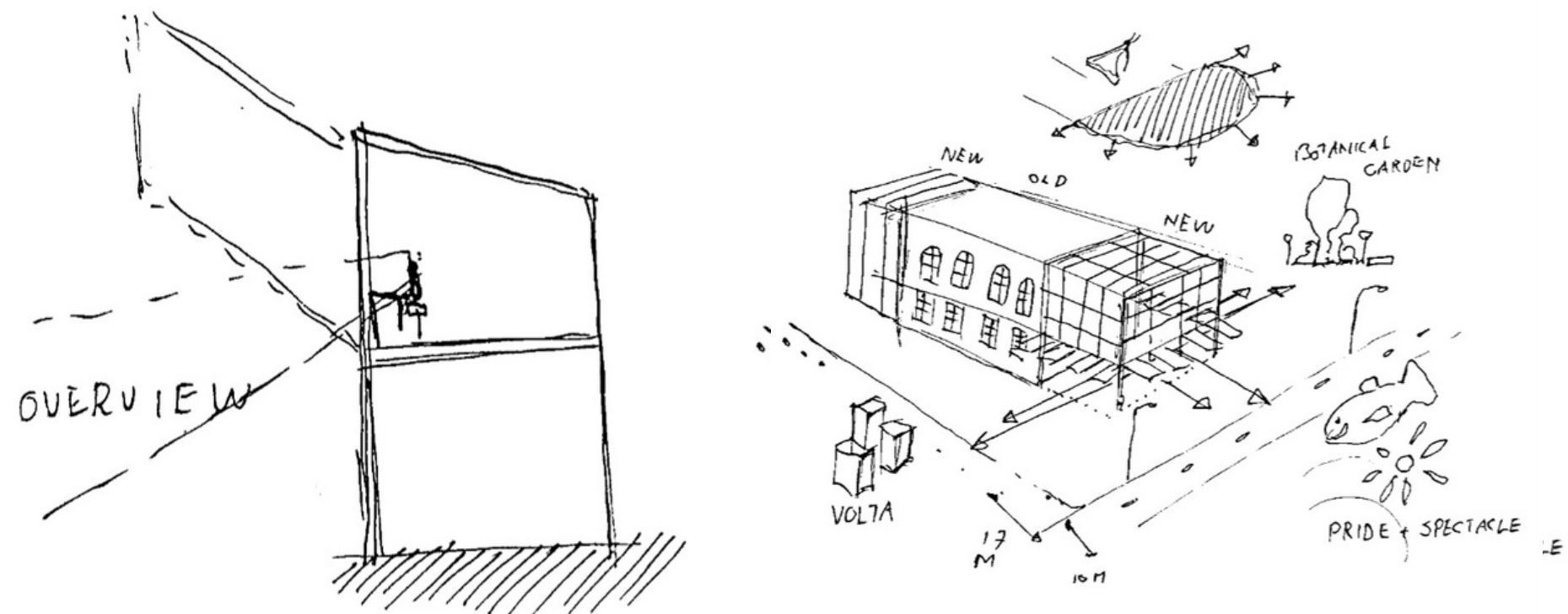
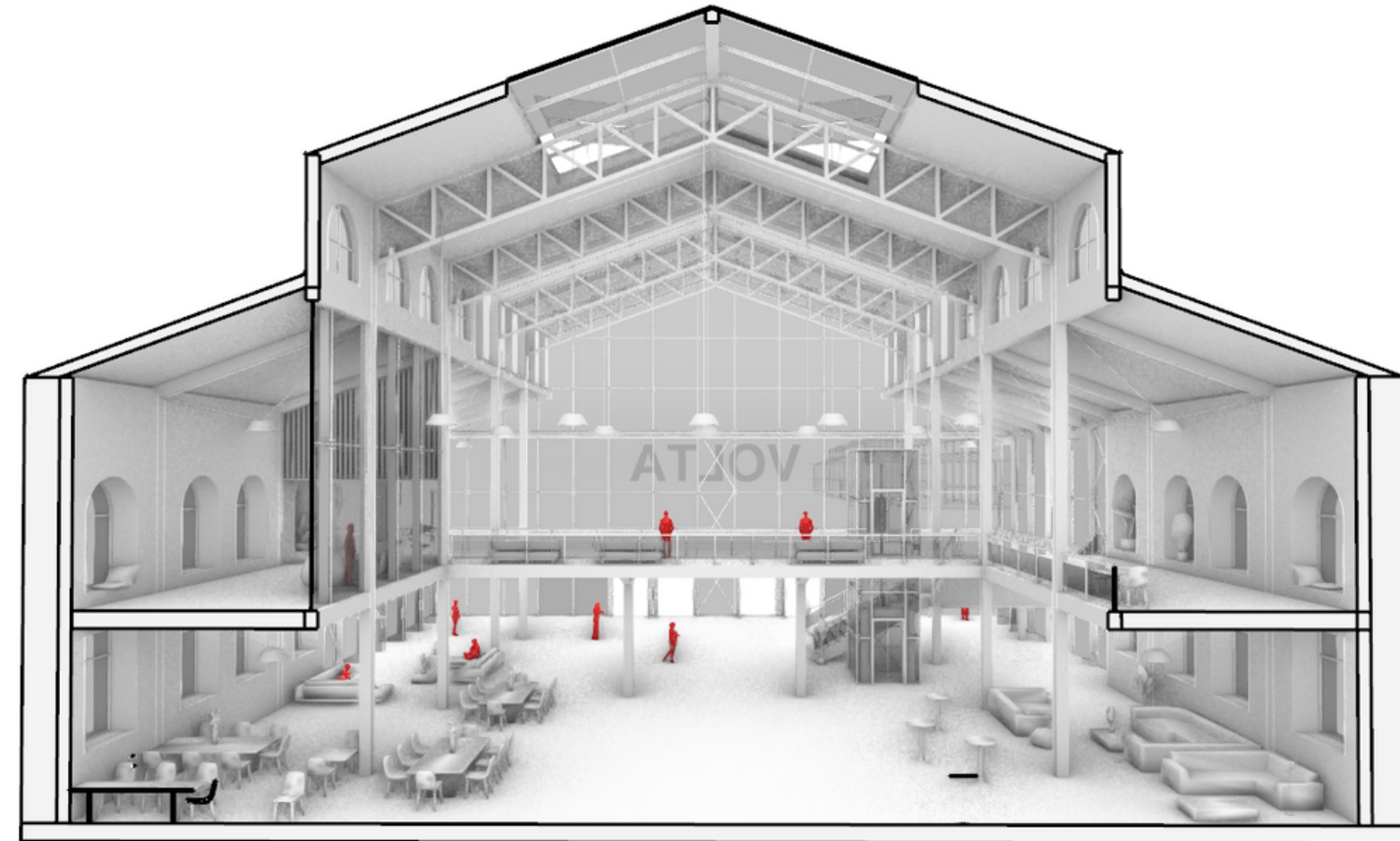


# Transparency

Permeable boundaries  
with the outside:  
reconnect with nature

Overview and social  
control + cohesion

Greenhouses for a  
panoramic view +  
connection with  
gardens

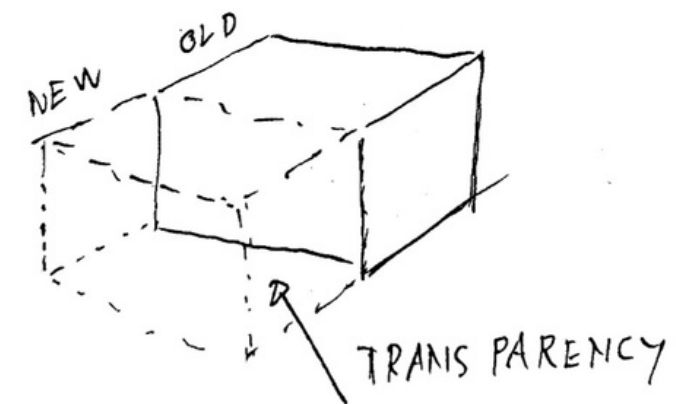
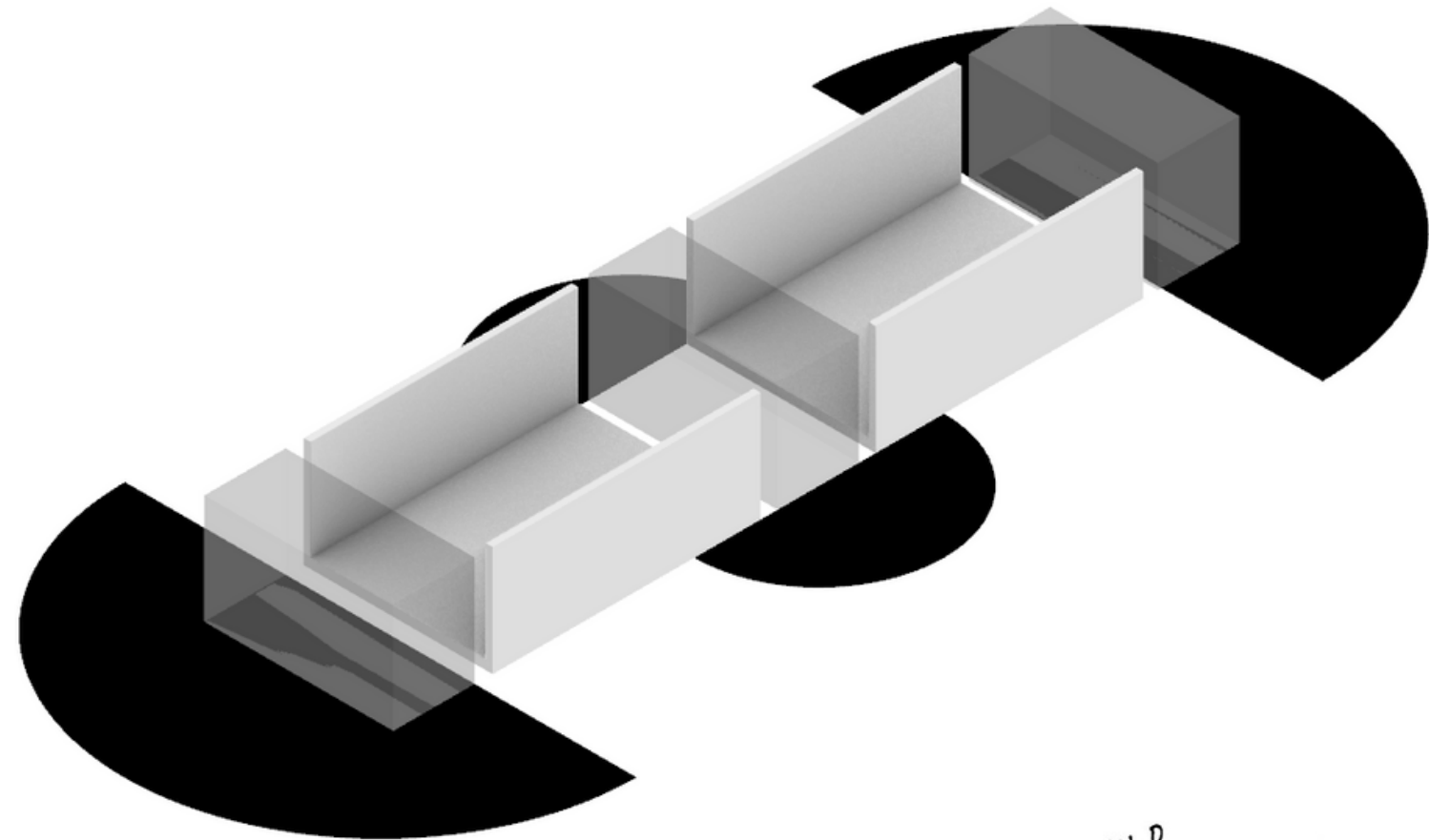


# Transparency

Natural light  
More inviting  
Boost productivity

Culture: open up  
towards the Bay. Pride  
of Kalamaja

Lookouts/ spectacles in  
every direction



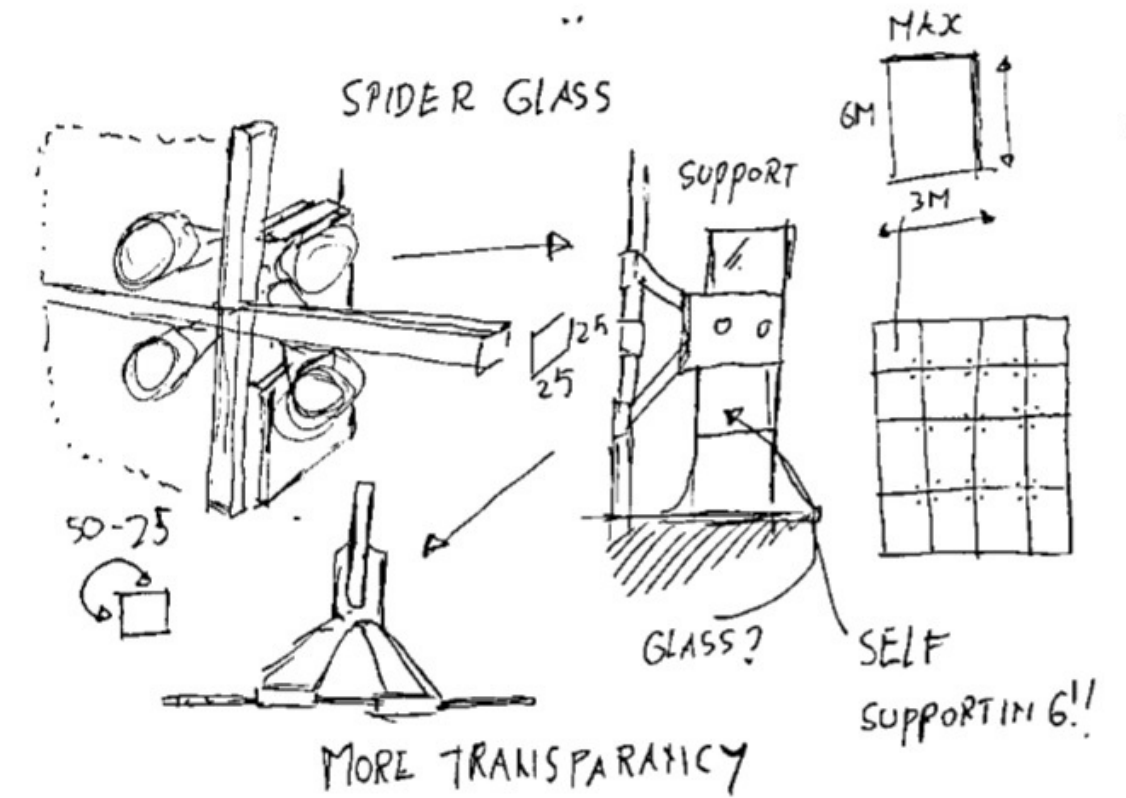
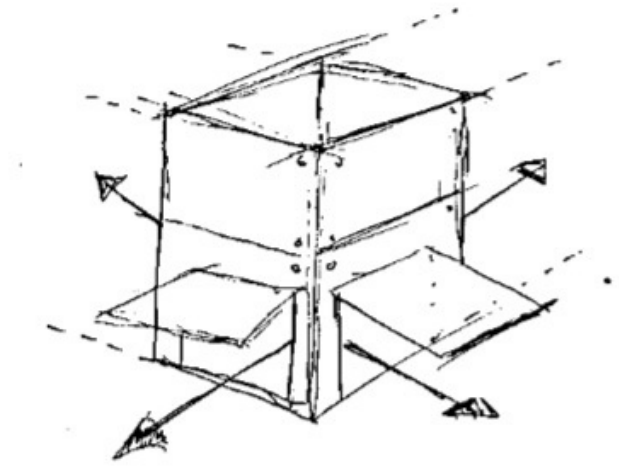
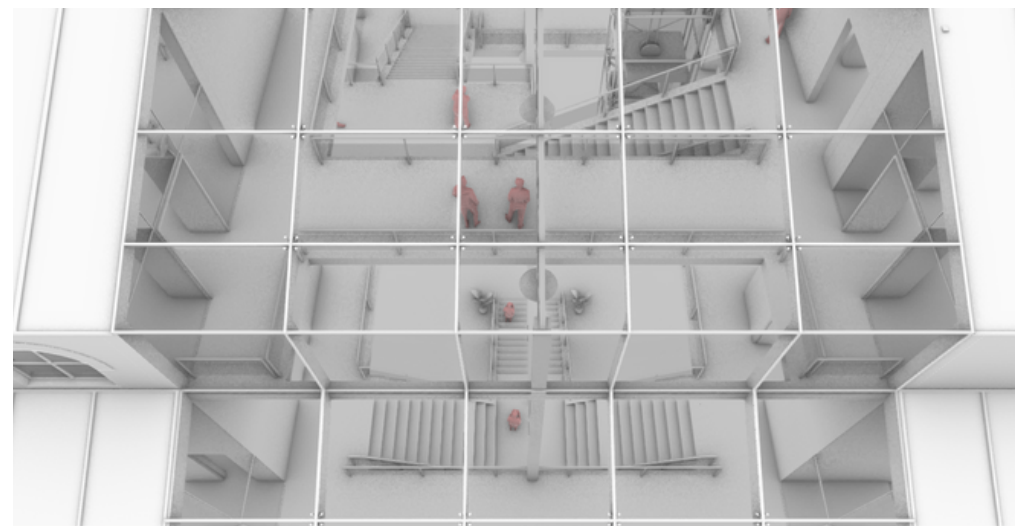
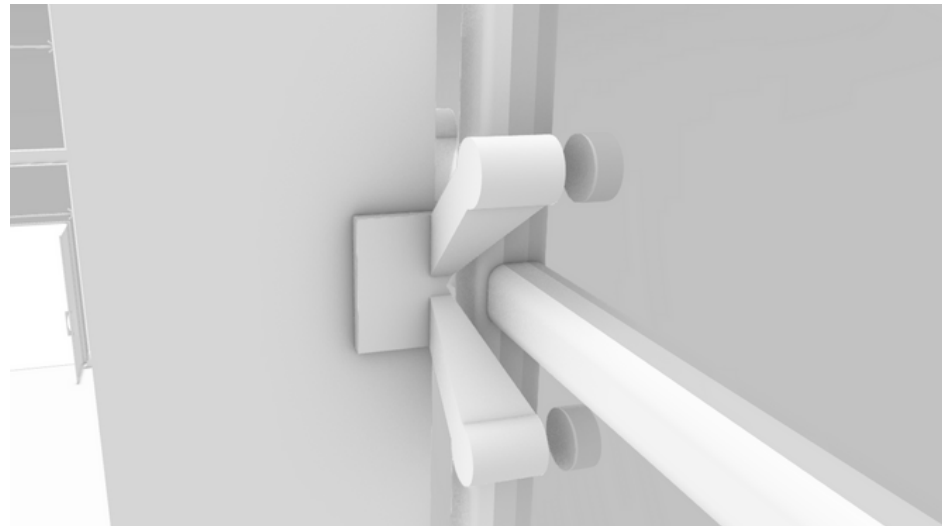


# Spiderglass Facade

High Transparency + climate control

Anti glare

Self supporting



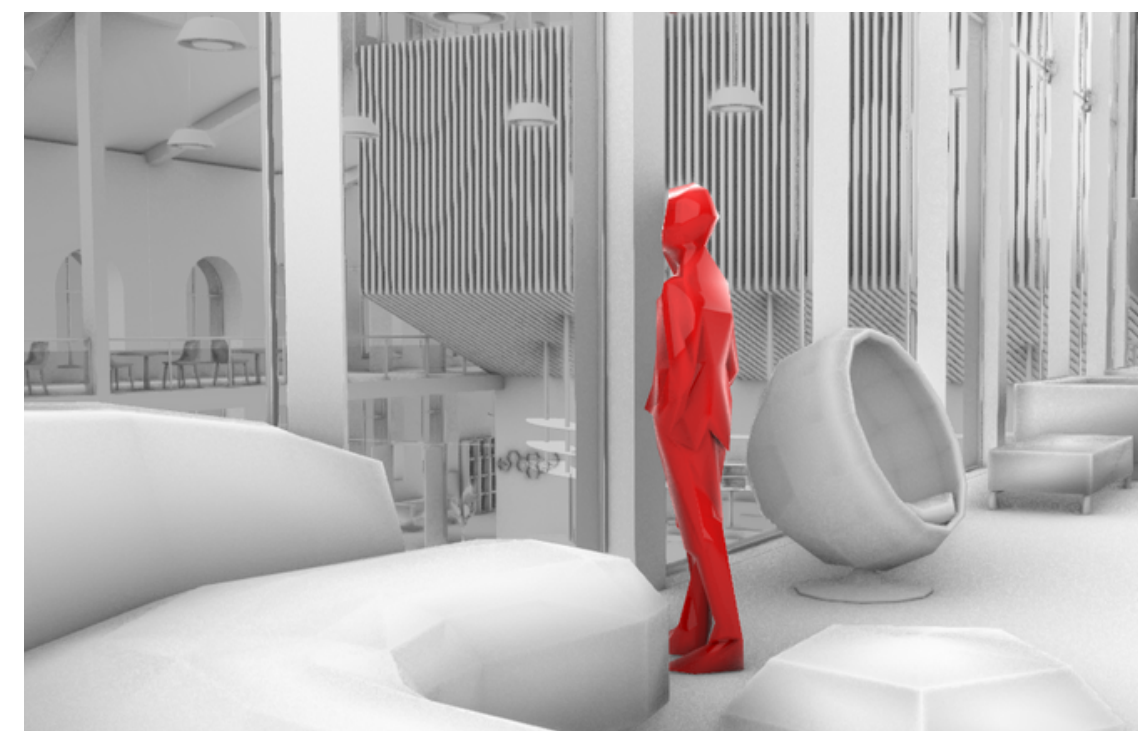
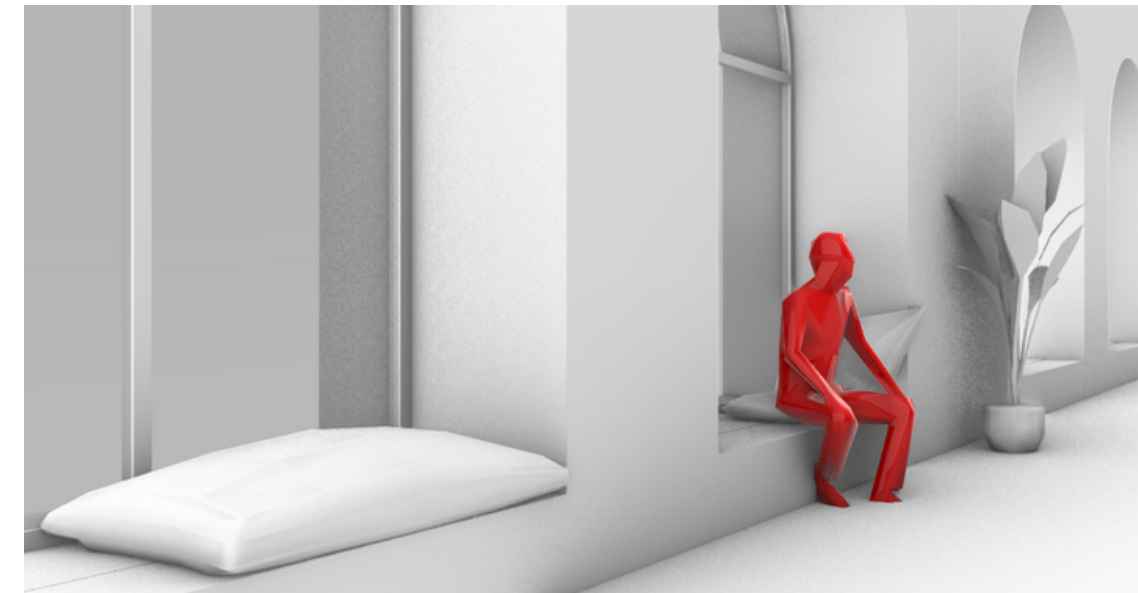
# A Big cozy livingroom

Warm colours

Places to sit ,recollect & socialize

Coffee tables and couches

Entertainment & social initiatives

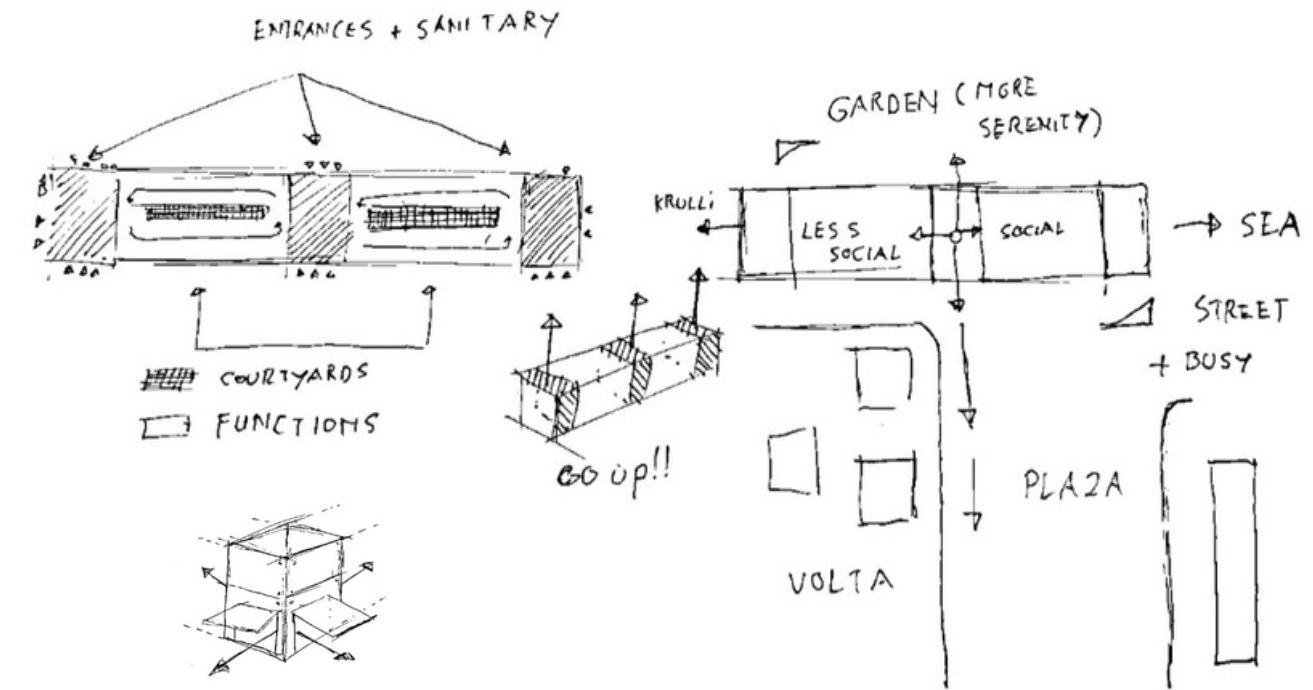




# Ground Floor

Openable Facade - Permeable border according to seasons

Inviting Entrances



146 m

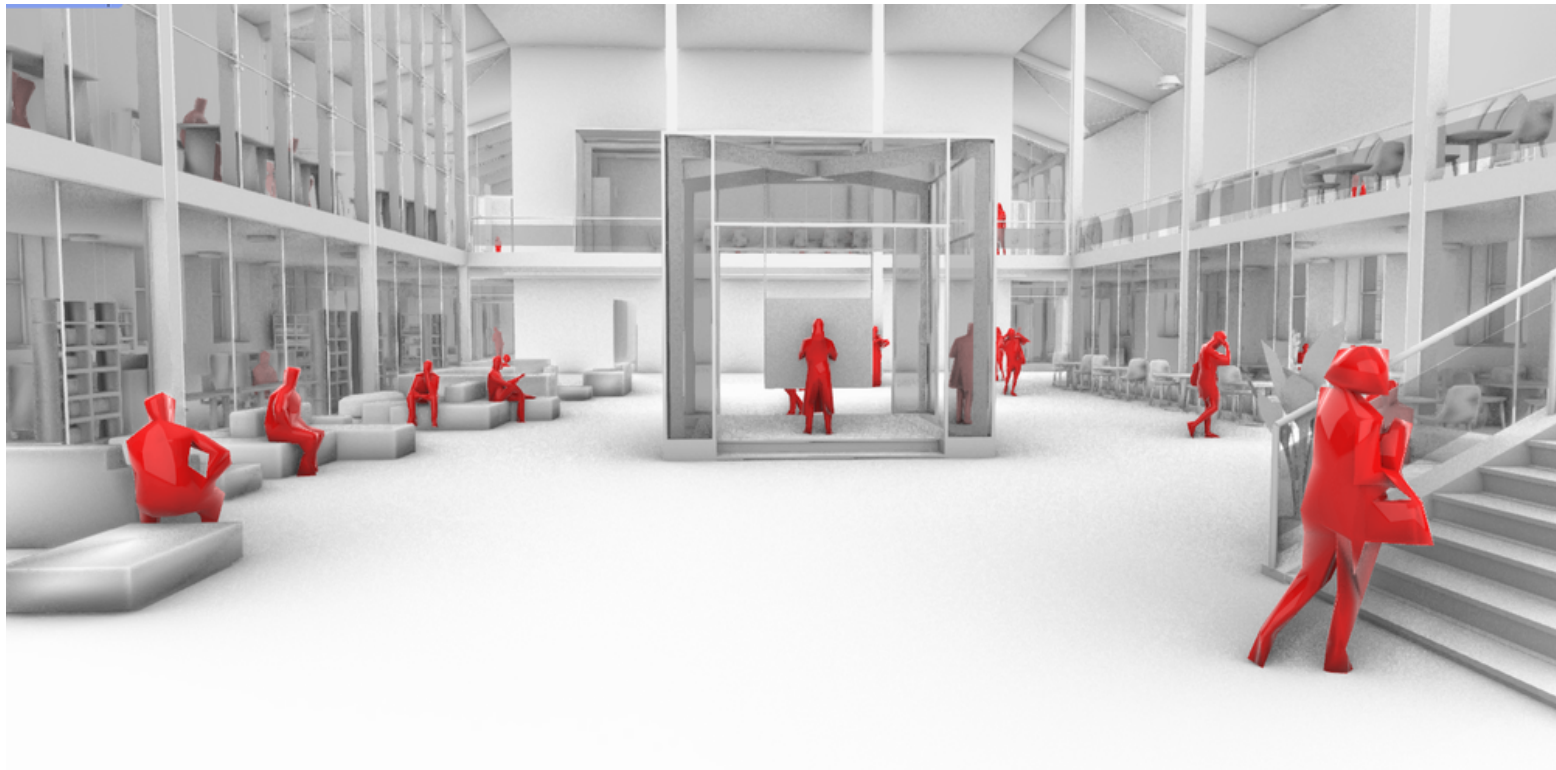


31 m

Library + restaurant + Garden storage (cultural hub)

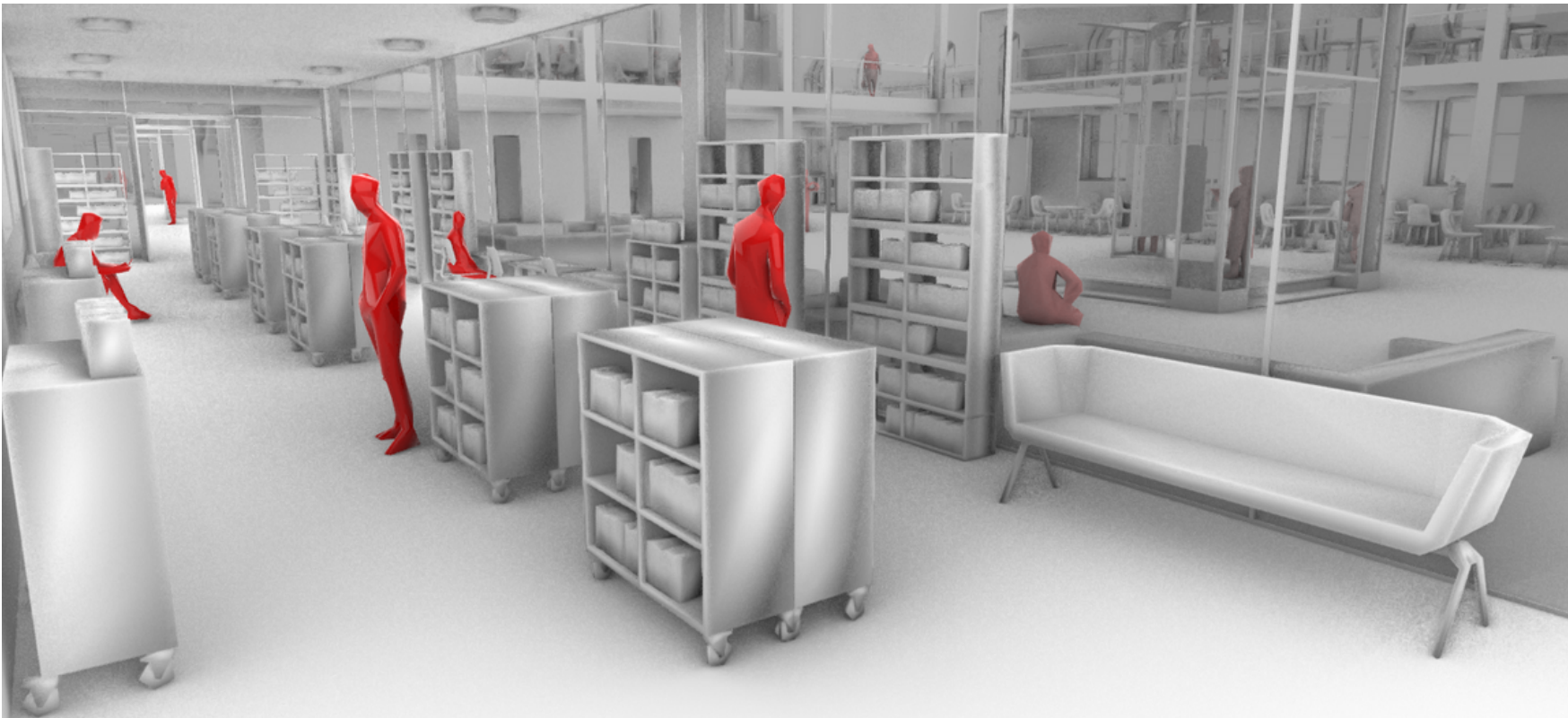
Event hall + lounge + Kitchen

# Cultural Hall



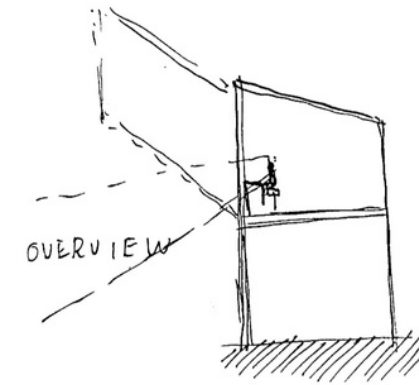
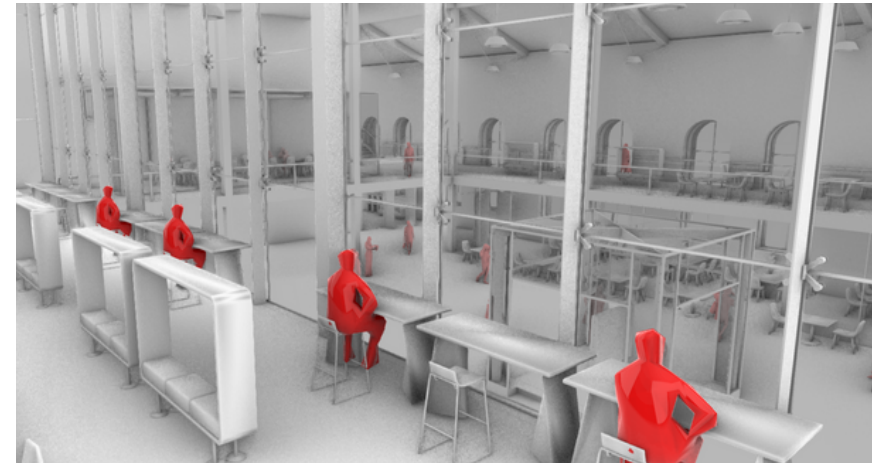


# Library

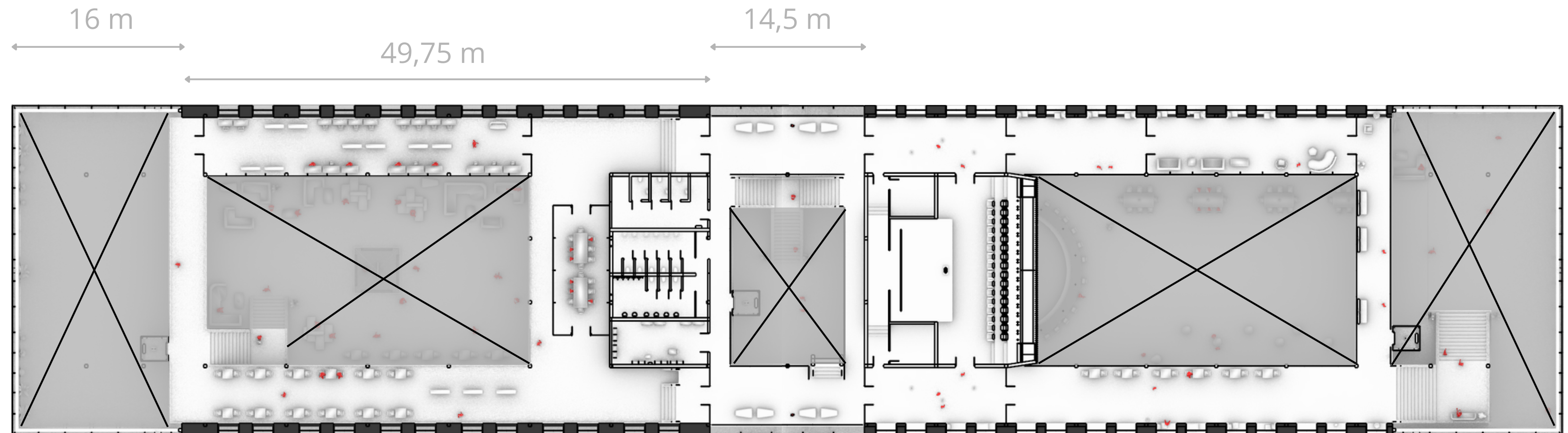


# First Floor

Voids to boost transparency and the courtyard concept



Study space lookout towards the garden + inner courtyard

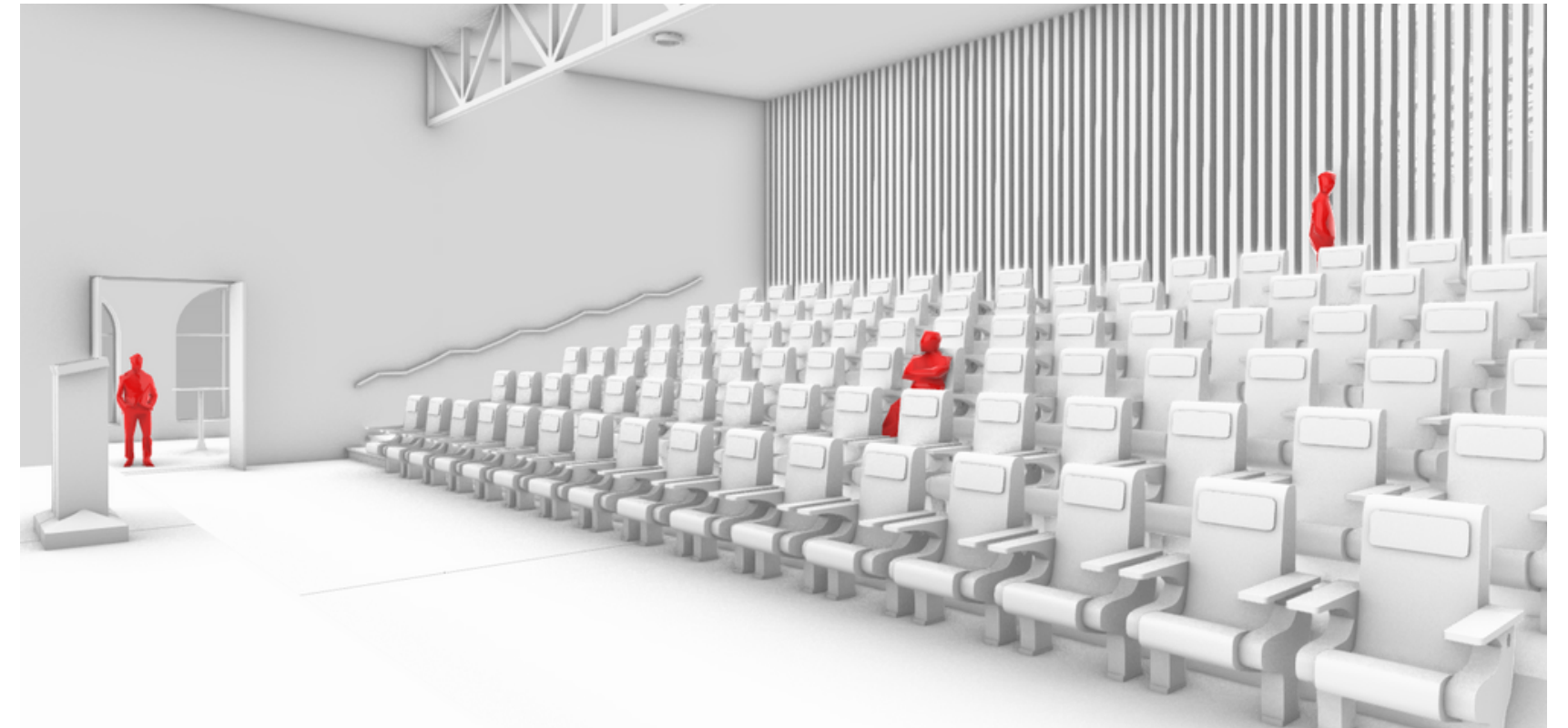
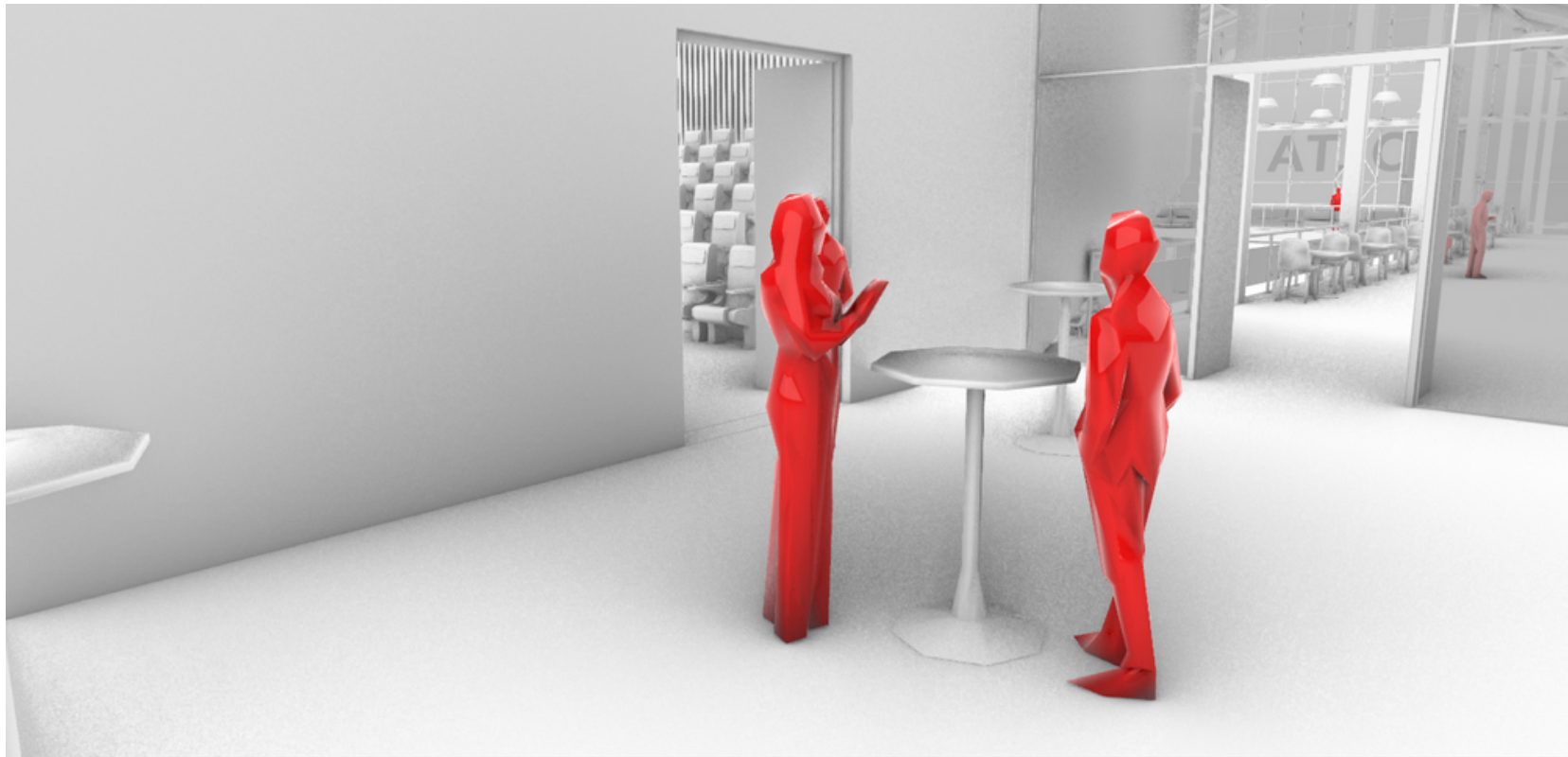


Restaurant, workshop & Enclosed Study space

Theatre + Lounge + spectacle (Bay lookout)

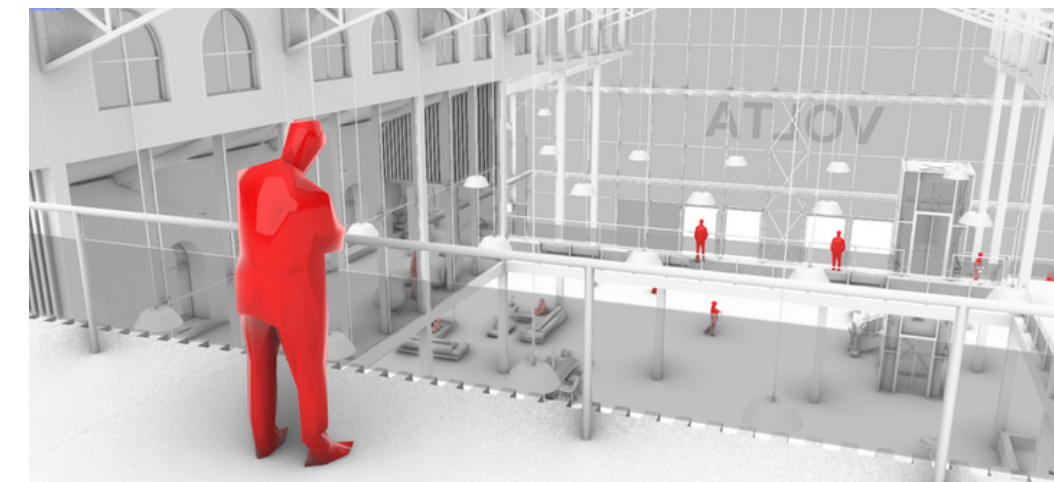
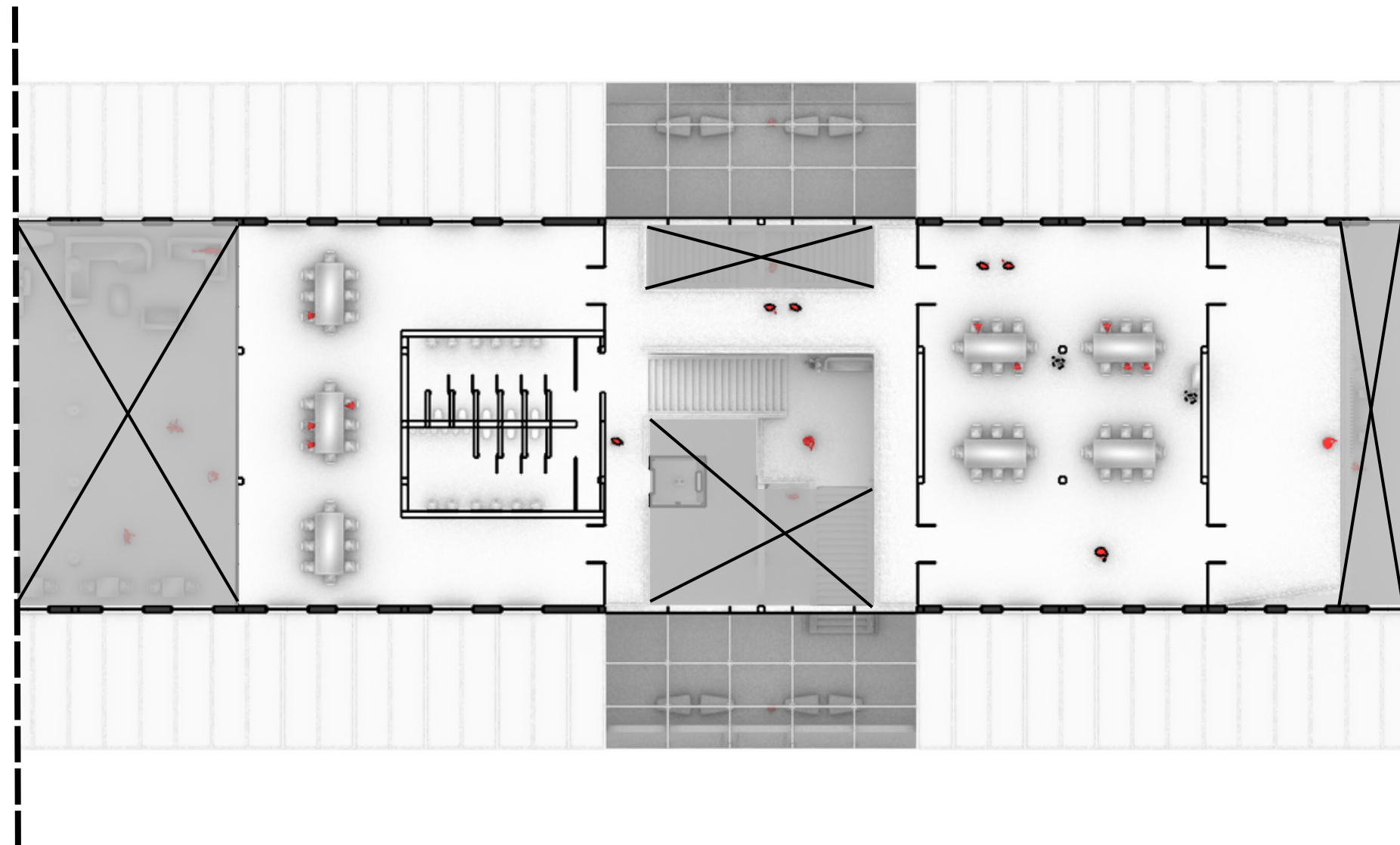


# Small scale Theathre



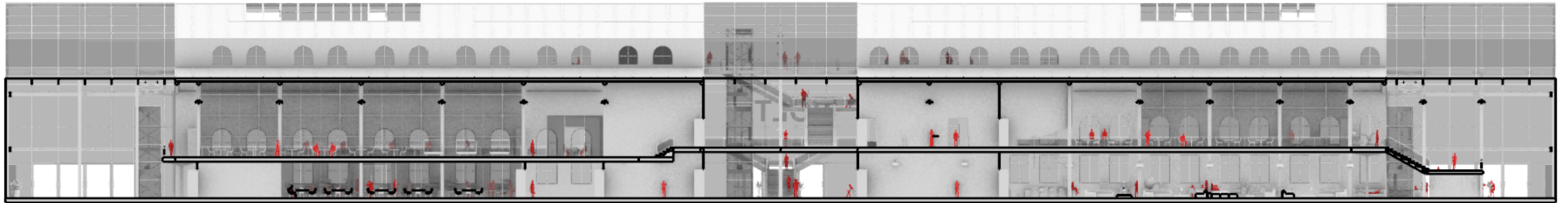
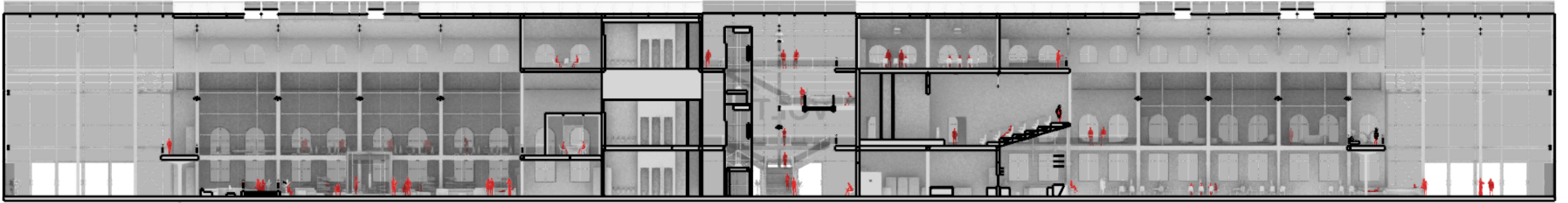
# Second Floor

Rentable office spaces + balcony





# Sections



# Center core

Office space

Meetingplace  
Workshop

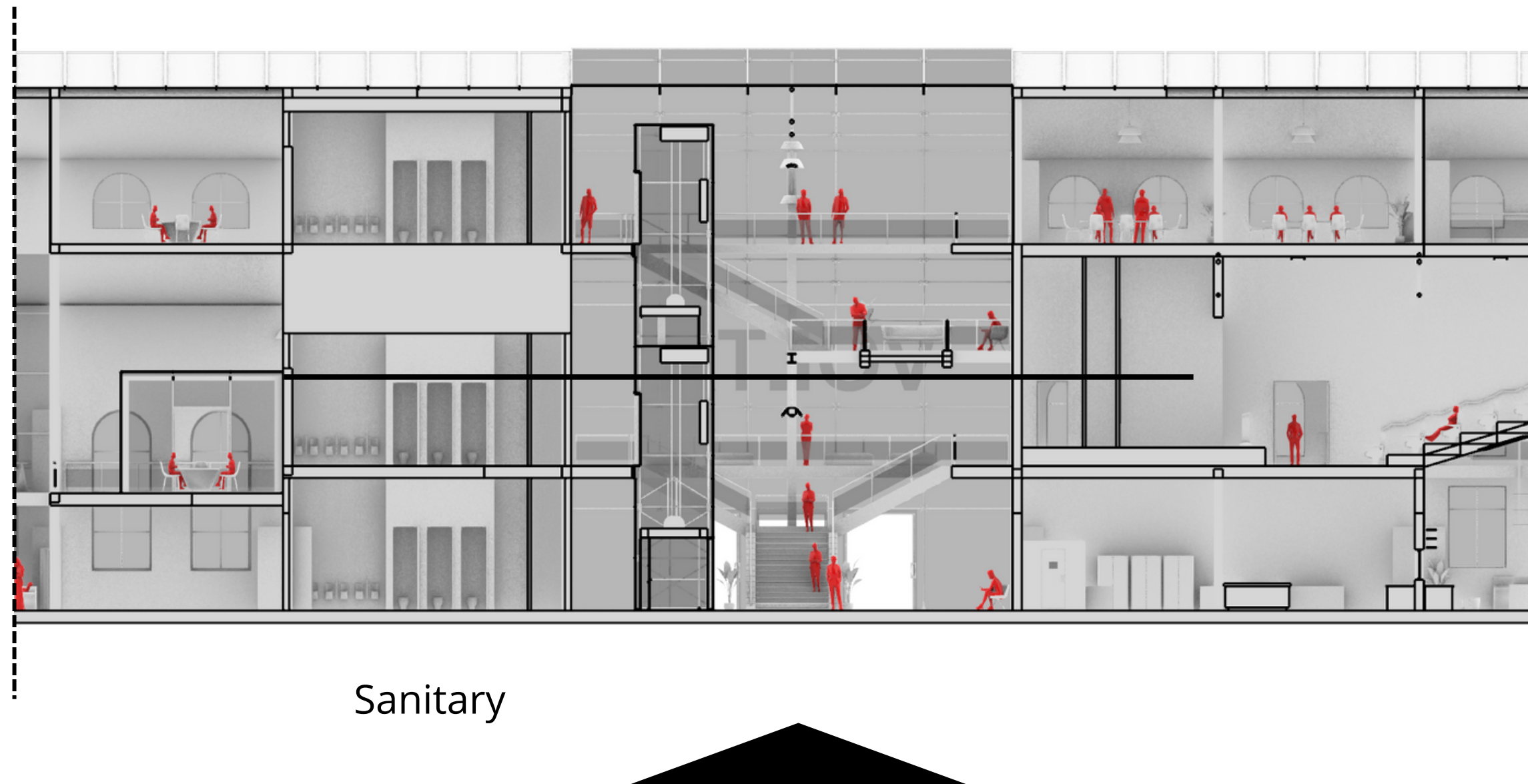
Restaurant

Office space

Theatre

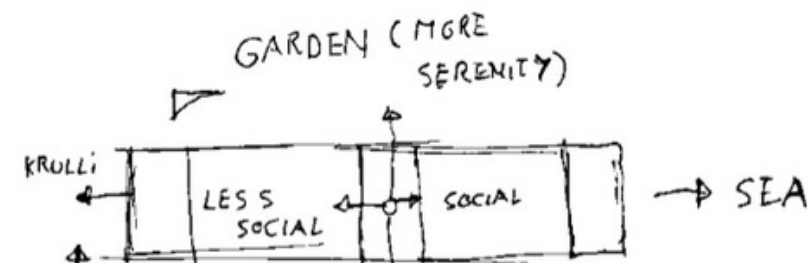
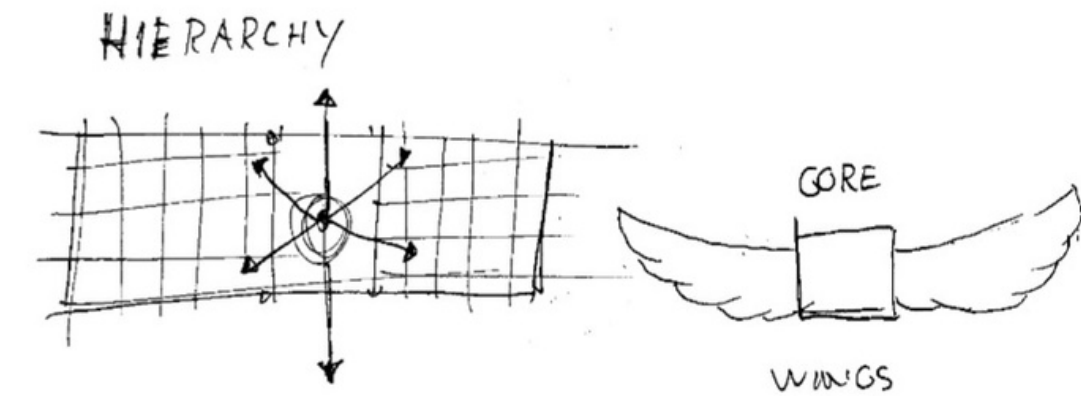
Kitchen + Bar

Sanitary

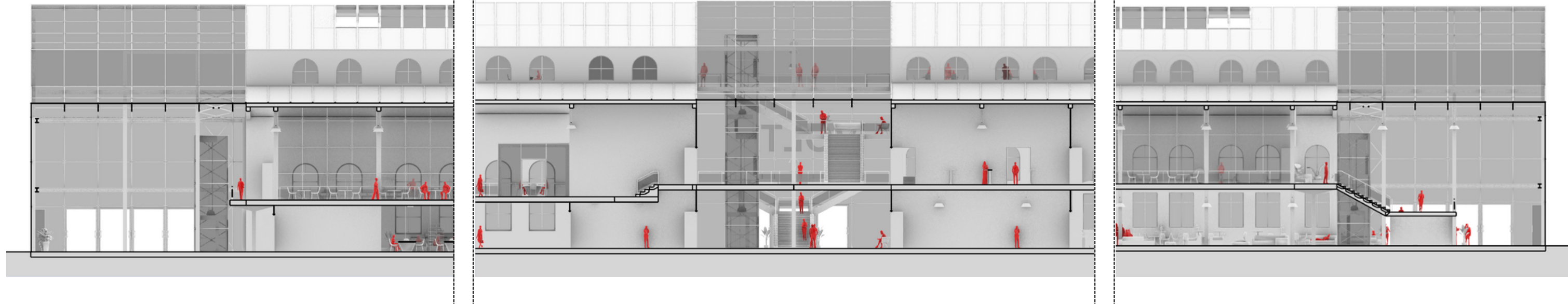


# Hierarchy

Core with two wings principle

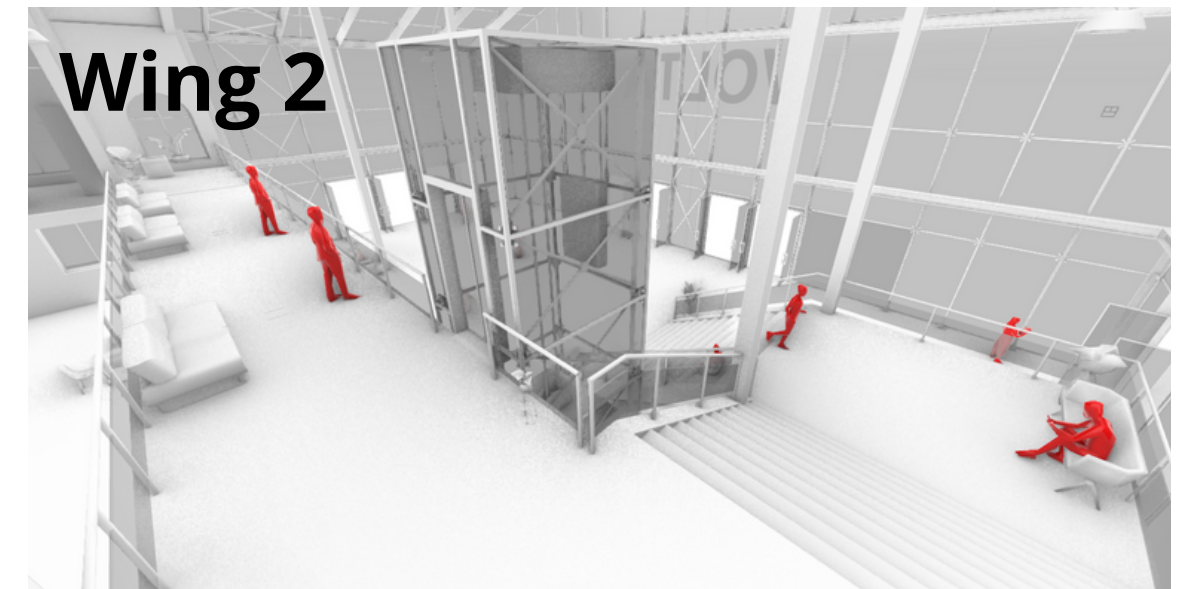
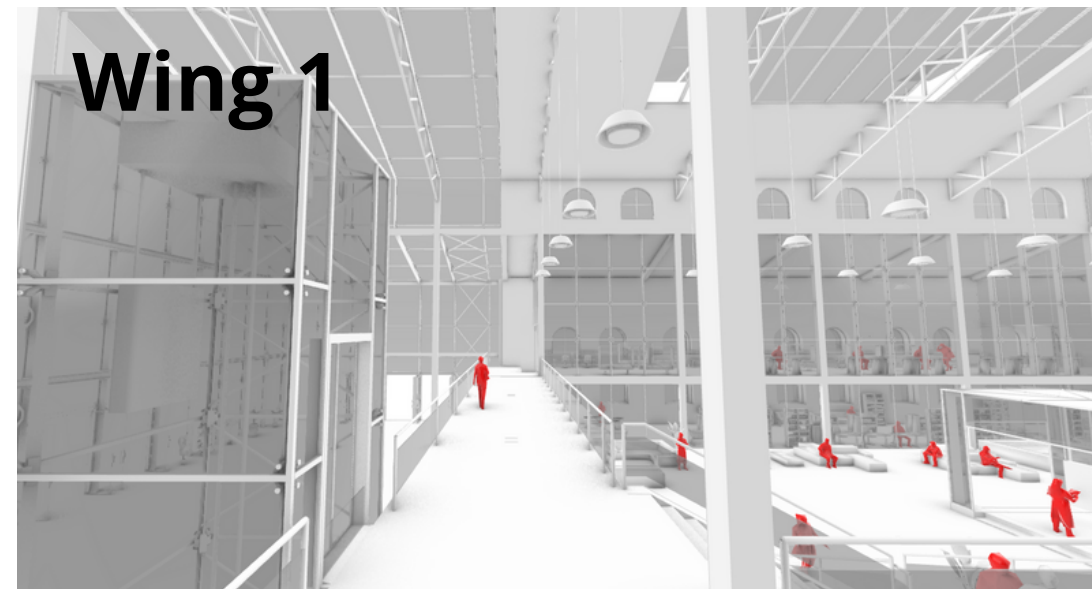


Spectrum of functions



Core passage (toilets and recollecting space)





# Circulation area

Core and wings

