

CULTURAL VALUE

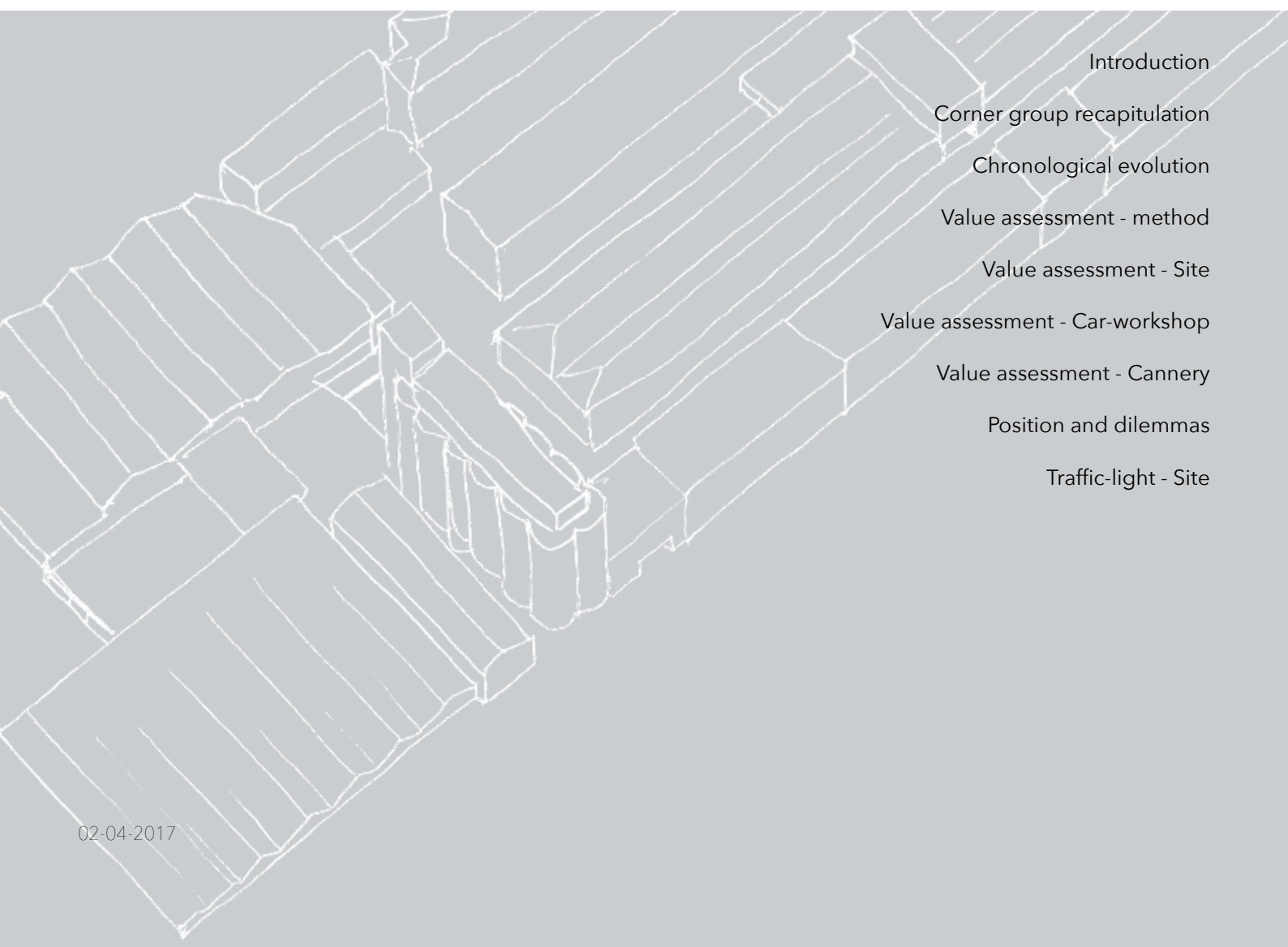
P2 - Value assessment



Heritage & Architecture. Msc 3 - Msc 4
Disclosing the military city Lisbon. Autumn 2016 - 2017

02-04-2017

Contents



Introduction
Corner group recapitulation
Chronological evolution
Value assessment - method
Value assessment - Site
Value assessment - Car-workshop
Value assessment - Cannery
Position and dilemmas
Traffic-light - Site

Site

	AGE	HISTORICAL	ARTISTS	COMMUNITATIVE	USE	BEHAVIOR	CONFLICT	HERITAGE VALUE
BUILDING AREA								
STORY								
STUFF								
SERVICES								
SPACE PLAN								
STRUCTURE								
ENVIRONMENT								
SPATIAL								
SOCIAL								

Ensemble

	AGE	HISTORICAL	ARTISTS	COMMUNITATIVE	USE	BEHAVIOR	CONFLICT	HERITAGE VALUE
BUILDING AREA								
STORY								
STUFF								
SERVICES								
SPACE PLAN								
STRUCTURE								
ENVIRONMENT								
SPATIAL								
SOCIAL								

Source: Corner group cultural value

Corner group recapitulation

Before entering the phase of the personal value assessment the site was already being analysed in groups. This analysis also incorporated the first investigation into the cultural value of the MMC site and the result was a group value matrix according to the studio standard of Riegl and Brand, this method is elaborated later on. This chapter briefly summarizes the group findings and reflects on them.

The group work was especially focused on a more broad level of valuing since the personal assessment would incorporate the buildings of choice in a more detailed manor. The group that I was part of during the analysis phase was focused on the 'weird' corner as it was then called. This is also the place of the buildings of my further elaboration so this fits seamless into my process. The matrix schemes shown on the left page are the result of the group valuing of the MMC. A matrix was filled with images and keywords for both the entire site as well as the ensemble of the corner, see excerpt image below for a example of the type of images and text. .

Site

The matrix for the entire site was a difficult one to fill. As is visible in the matrix the most values are in the range of historical, artistic and use value. These values characterize this complex having a long history but mostly we valued the relics that have survived on site that are tied to this history or the intangible stories and historical aspects that belong to the site. Next to this history the use value is also of importance the site is still very much usable and this is visible in the values given to the infrastructure, structure, buildings etc. Something that we misinterpreted during this process is the conflict value. The heavy weight that this value embodies is not really fitting for the border protection of the site or the fact that the ground was taken from the monastery.

The group concluded the findings on the level of the site in a couple of dilemmas that emerged from the encountered values and the fact that we as a studio want to re-use this complex. The dilemmas on site level presented by the group where the: Social, border and industrial vs. aesthetic dilemma.

Border dilemma:

The most important dilemma on site level would be the border dilemma. The fact that by disclosing the site one has to take position in the way to deal with the border. This border is not just a wall, in fact it is composed of façades (closed and open), fences, walls and gates. It is important because the enclosure is also one of the few reminders of the fact that it was once a military site.

The social dilemma continues on this history element in the shape of the social function the site used to have for the workers opposed to the way current people in the neighbourhood nowadays know the site. The site used to take care of the neighbourhood with facilities and jobs, but now it is turned into a eyesore for the younger generation that did not live this period. This is a dilemma between history (nostalgia) and the present representation (use).

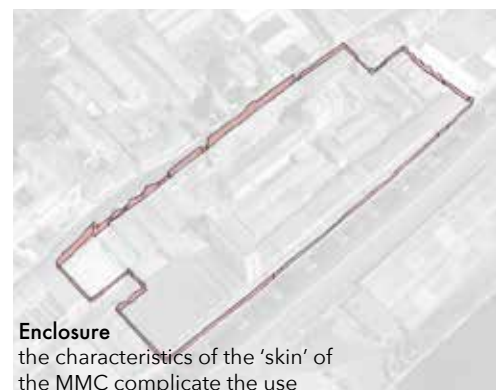
Industrial vs. Aesthetic dilemma

The site has this sort of schizophrenia in itself because of the way the buildings on the site are made and have a certain appearance. The buildings on site are either typically industrial looking or have a distinct aesthetic appearance almost architectural. This is due to the fact that the site has expanded and the older buildings are more attached to the architecture of the surrounding buildings of the neighbourhood. The newer buildings tend to look more industrial as the rest of the harbour development. The dilemma we found in this is that the identity of the site is not the same for the two sides. So what to with this clash of styles, the two faces of the site so to say.

Ensemble

The buildings belonging to our ensemble where the buildings of the north corner, highlighted by a yellow square on the next page. The main values found in these buildings lay in the artistic and historical part, see example excerpt on the right. A major difference with the rest of the site is that the corner ensemble houses buildings that do not relate to the production process of the MMC but are the facilitating buildings. These buildings have historical values but these are almost all found in traces of development and expansion. The main dilemma found by the group is the physical vs. spiritual dilemma.

With this dilemma we meant the experience of the place, the artistic value, the sequence of buildings is very special and gives the ensemble its charm. But the truth is that the physical state of this sequence is based on a poor quality shed structure and the dirty and greasy interior of these buildings. This is of course a difficult aspect to deal with in a design, because new functions need good quality and good interior environments to function. The ensemble did not yet yield and more dilemmas at that time, mainly due to the fact that the buildings where not yet fully understood.



excerpt from matrix - use value of the skin



excerpt from matrix - historical value of the services

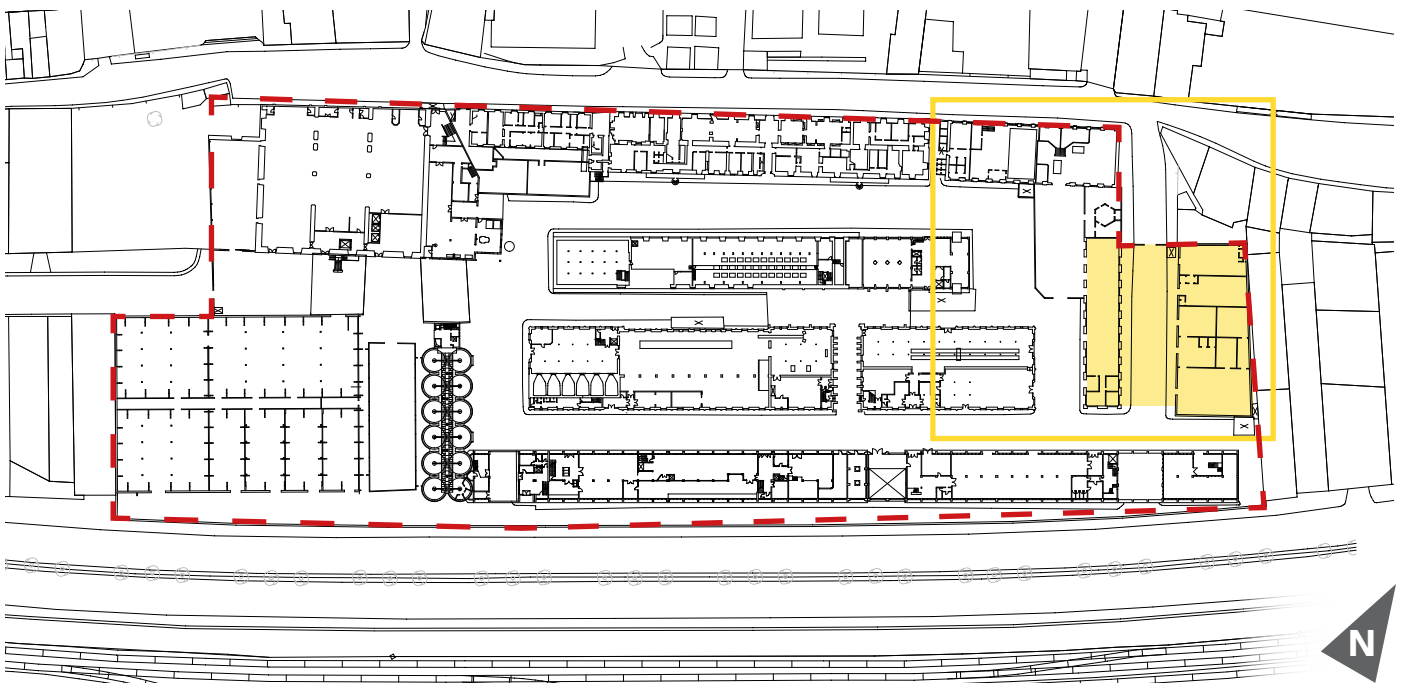


fig. 1 - mmc site plan (docomomo int., 2016) — site border — ensemble — buildings

Introduction

After the group phase the personal elaboration started, for this a smaller part of the site was taken. The Manutencao Militar Complex (MMC) in Lisbon, Portugal, is shown in the drawing on the left page. The site boundaries are highlighted by the dashed red line to indicate the limits. The site consists of a great number of buildings from which I have chosen to focus my design near the North entrance, marked by the yellow line. In my further elaborated design I will focus on the two buildings and the entrance street highlighted yellow. The buildings are visible on this page, on the left the former car-workshop/office. On the right the building that was once the cannery, meat storage and last used as frozen food factory.

I have chosen these buildings because of their low scale and aesthetic appearance, compared to the rest of the site. Next to this the street running in between them is important to the site for entering and it is a point of possibly connecting to the neighbourhood.



fig. 2 - three pictures: interior/exterior car workshop
source: own photographs 2016,

fig. 3 - three pictures: Cannery interior/exterior
source: A. Huisman, 2016

Chronological evolution site

The MMC site as known today is built during a large span of time and under the influence of many different aspects. To get a grasp on this mix of construction dates the two drawings were made to visualize this mix. The three dimensional drawing shows the growth in periods of larger expansion whereas the drawing on the right page shows exact years per building. Remarkable is that from all of the construction periods one or more buildings have remained, creating a full spectrum view of the growth of the site.

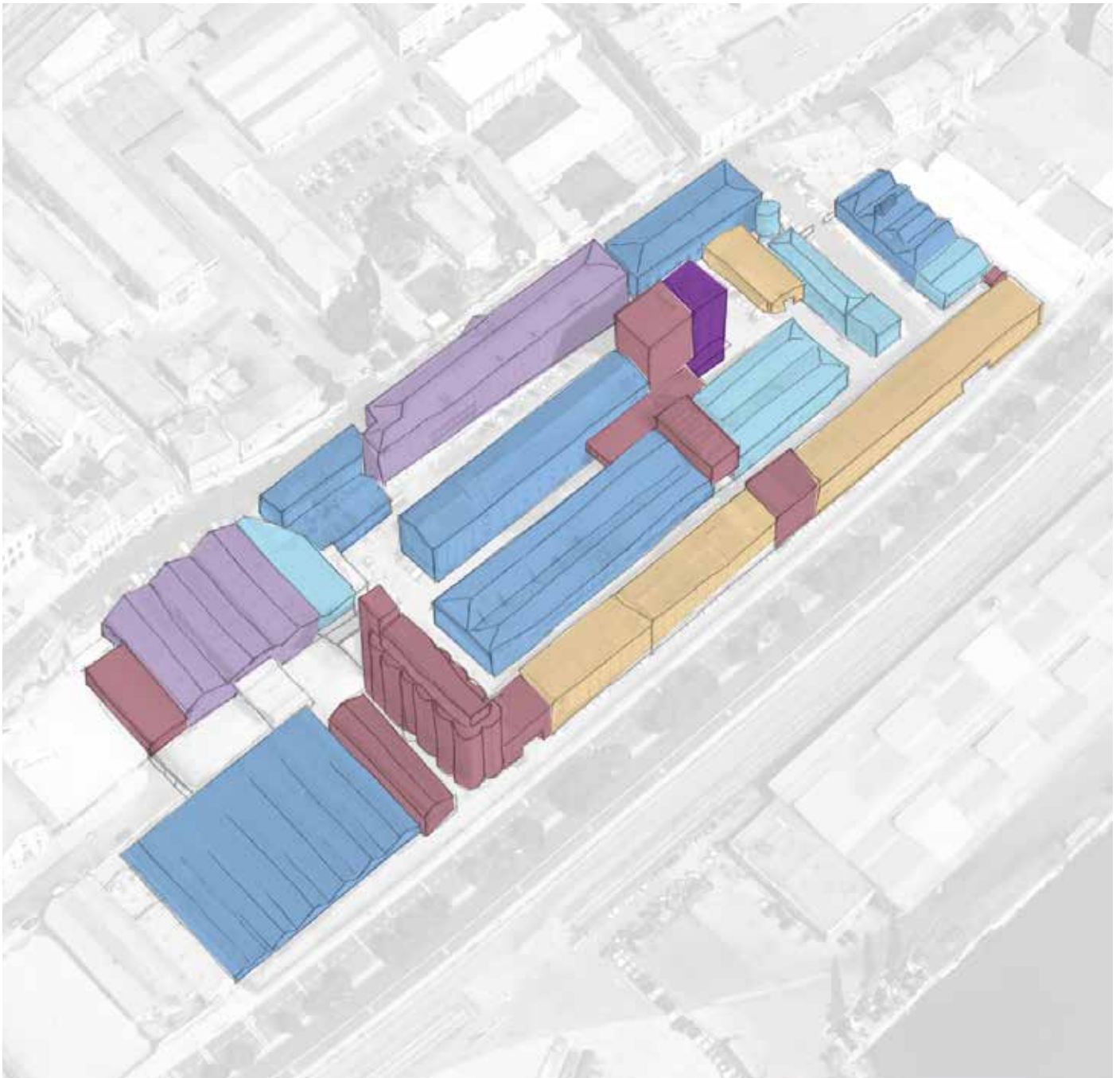


fig. 4 - chronological mapping of MMC, own image based on Google maps (maps.google.nl)

colour legend (colours based on drawings from Cramer & Breitling, (p. 69, 2007))

pre 1900 1900 - 1910 1930 - 1934 1960 - 1965 1970 - 1975 1983

Chronological evolution buildings

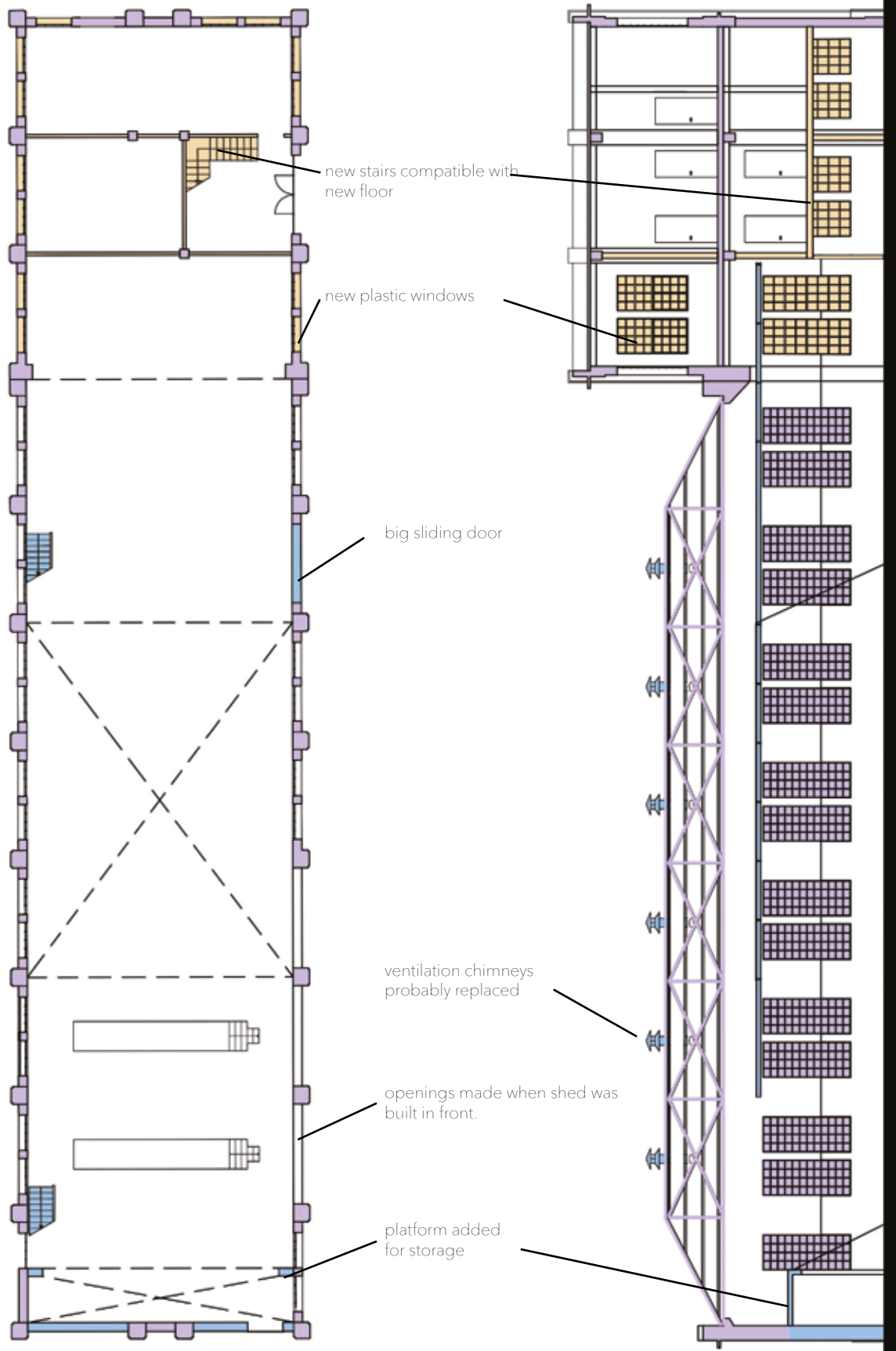


fig. 4 - chronological mapping car workshop

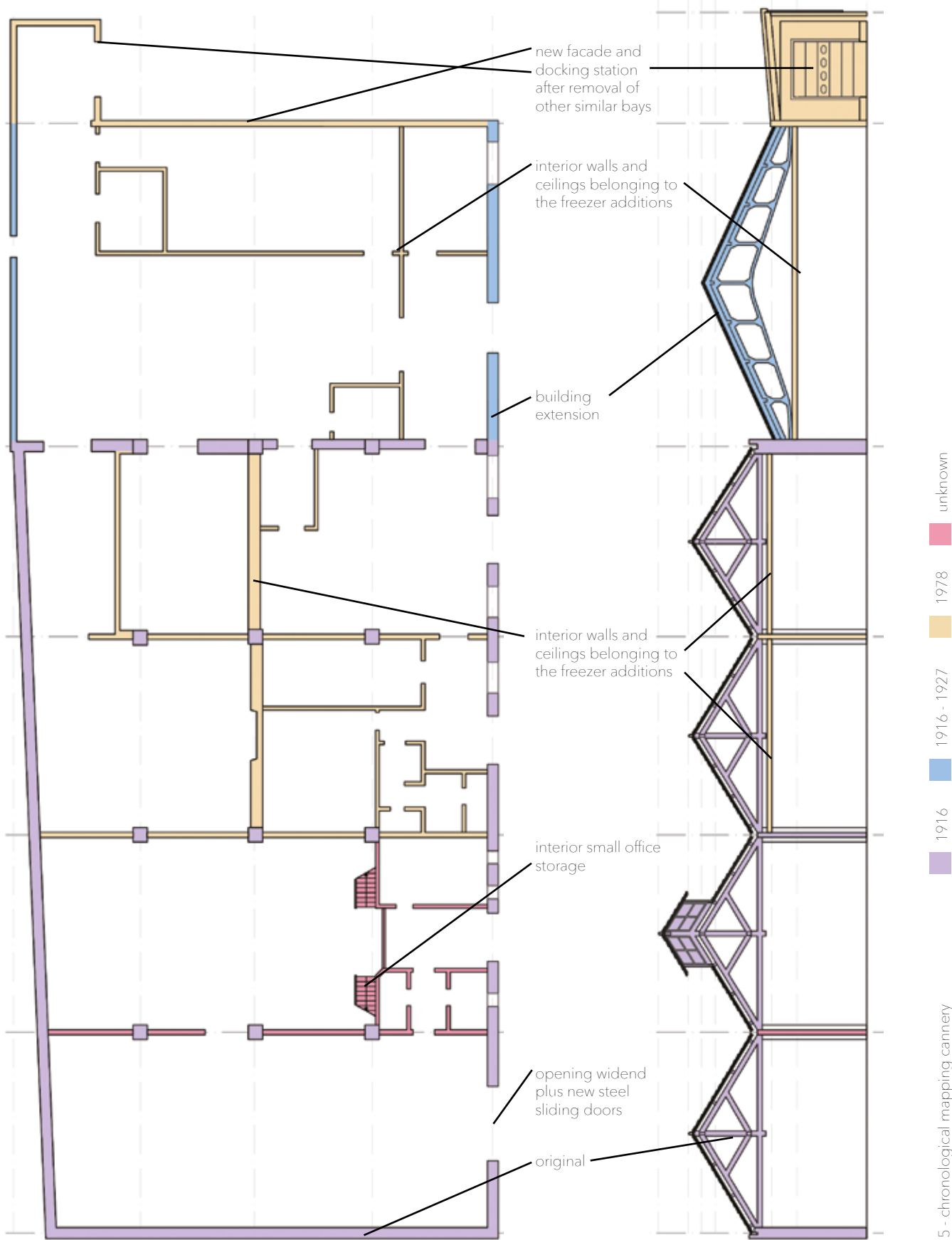


fig. 5 - chronological mapping cannery

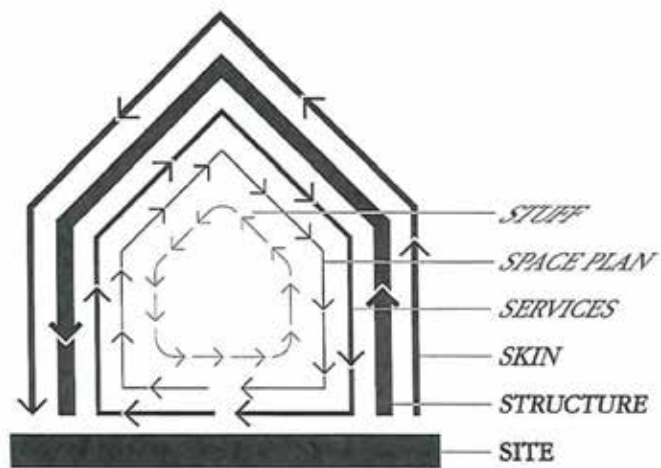


fig 6: Shearing layers of change - source: (Brand, 1994, p. 13)

Commemorative	present-day
age value	use value
historical value	newness value
deliberate commemorative value	artistic value

fig.7: Values Riegl, own image - source theory: (Riegl, 1903)

Value assessment - method

For determining the values of the site and the buildings, a tool was provided that combined the theories of two important writers used in the Heritage & Architecture field. Alois Riegl's theory¹ on different heritage values is used, the original values are shown in the scheme on the left. Next to Riegl, also Steward Brand's shearing layers of change², shown in the scheme on the left. The tool combines the theories into a matrix which can be filled. Its strength is that every building layer is opposed to every value, forcing one to think about the possible combination of the two. In my personal process the matrix was used according to the schemes below on this page. The matrix was filled in with values derived from the analysis, later three broader themes emerged from the matrix in which the values could be categorized. These themes are highlighted by colour in the matrix. The matrix shows some key lines of text for every value. The themes that are distilled

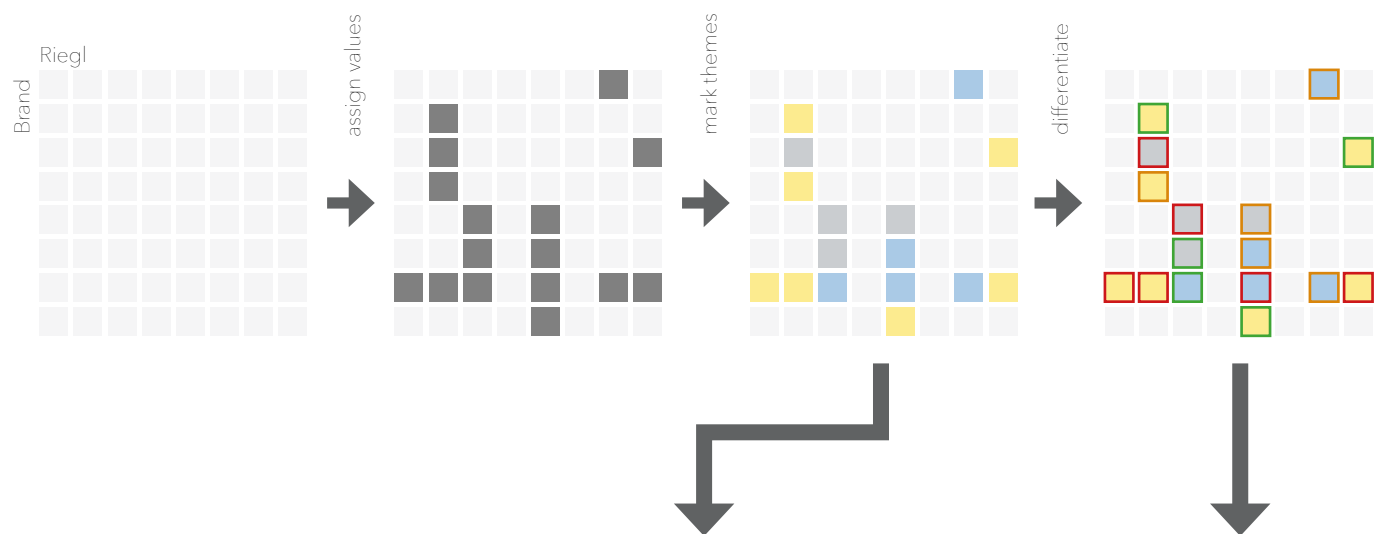
from filling in the matrix are shown in the scheme below and are briefly elaborated as to what they embody. Sometimes one value contributed to two themes at once this is later indicated with a gradient of the two thematic colours.

The themes that emerged after filling in the matrix could be seen as the three general values that contain every other more specific value. But these thematic values have no link to a specific building but are personal for the design challenge. The themes help structure the values and in doing so they preserve the three main valued things about the MMC as an inherited site.

Next to the themes a differentiation of importance must be made to indicate which value is prioritized. This is done amongst the more specific values in the matrices made specific for each of the buildings and the site. With this added differentiation the valued object gets its core values that need to be considered above all else when encountering it in design.

1 Riegl, A., 'The Modern Cult of Monuments', in: Price, S., Mansfield, N., Talley, K. & Vaccaro, A.M. (eds.) (1996) *Philosophical Issues of Cultural Heritage, Readings in Conservation*, Los Angeles: Getty Conservation Institute, p. 69-83; ERA Architects

2 Brand, S. (1994). *How buildings learn. What happens after they're built*. New York: Penguin Books USA



Themes:

spirit of former use
 Focused around the **atmosphere**
 and the **old functions** of the buildings and site

disconnection
 Focused on the **contrasts** that exist
 and the **strangeness** that arises from them

proportions
common ground for the industrial
 and human **scale**

Differentiation

High
medium
low

Themes:

spirit of former use

disconnection

proportions

Differentiation:

high

medium

low

Site AGE HISTORICAL ARTISTIC COMMEMORATIVE USE NEWNESS CONFLICT NOSTALGIC

SUR-ROUNDINGS

1

development of MMC over time

elements that remind of past use or transport such as pipes and rails

industrial reminders like pipes and rail give the site an appealing look

2

Longitudinal site street structure. Buildings are orientated towards complex

3

entrance street provides human scale to the site closes to neighbourhood

site has two fitting faces towards the surrounding

4

role of MMC in neighbourhood used to be the facilitator in the neighbourhood

5

Squares on the site

6

resilient infrastructure remained mostly the same

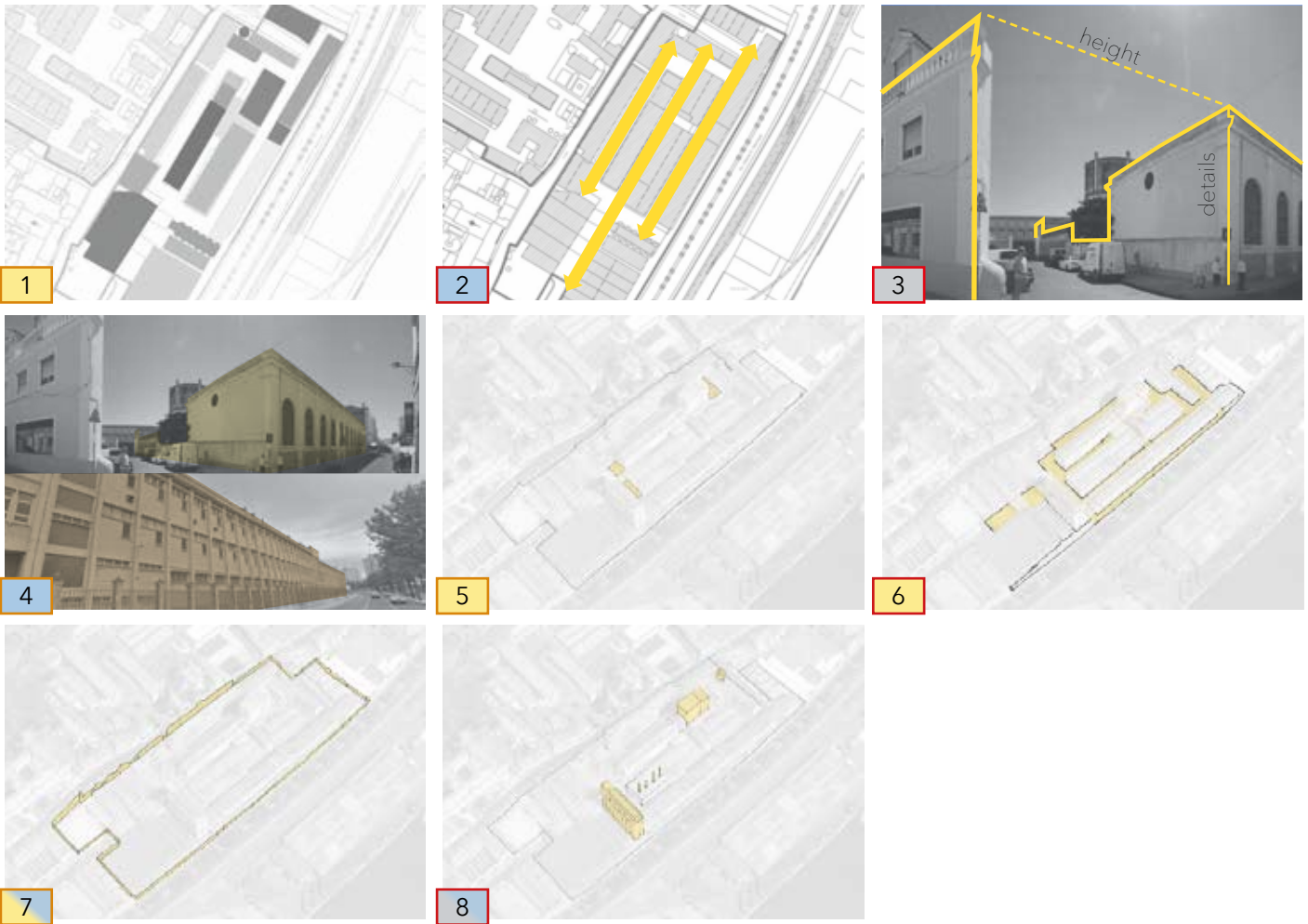
7

total enclosure by a perimeter wall/fence/buildings

8

landmark buildings provide a site marker for the surroundings

complex embodies the former prosperity of Beato



Site assessment

The values are shown in the matrix they are highlighted to which category they belong by means of a colour. All the values received a differentiation to show which of the values are more important to my process. The values that received a rating of medium or high are visually elaborated above and briefly elaborated in text per theme.

Spirit of former use

Valuable things that contribute to the atmosphere of the place like the overall development that took place over the years. The most important aspects are the infrastructure of the site with the streets and squares. Plus the fact that you feel and are totally enclosed on the site, as part of the military history. These contribute to the character of the site and should be dealt with accordingly.

Disconnection

The total enclosure is apparent but the border has multiple types of interfaces with the surroundings. This creates contrasts in the way the complex attaches to the neighbourhood and gives the complex two distinct faces, monumental and industrial. The border buildings all have façades facing the surroundings belonging to one of the two faces, but are orientated towards the site instead of the other way around. The landmark buildings

contribute to the contrast and strangeness by standing out with height and marking the location.

Proportions

The site could be represented as a sloping line. Growing taller to the middle of the complex and shrinking in height to the sides. This makes the site attach to the surroundings on all sides. The north entrance for instance is morphologically linked to the neighbourhood Beato, giving it very a human scale. Yet landmark buildings like the silo are the peak of industrial scale. The sudden transitions on the MMC site from human to industrial make some areas special as common ground between the two proportions, most special in this proportion difference are the two squares.

Themes:

spirit of former use

disconnection

proportions

high

medium

low

Differentiation:

Car workshop

NOSTALGIC

CONFLICT

NEWNESS

USE

COMMEMORATIVE

ARTISTIC

HISTORICAL

AGE

SUR-ROUNDINGS

STORY

STUFF

SERVICES

PLAN

SPACE

STRUCTURE

SKIN

SITE

SOCIAL

inbetween entrance street and corner square

5

use of the building is not apparent from outside, something with prestige is expected

mezzanine floor shows old use of the interior

inspection pit represents old way of using the interior space

2

ventilation system vents

3

structure determines facade, makes it sculptural atmosphere heavy base light roof

facade has a designed monumental appearance fitting to the neighbourhood

4

roof is constructed with iron trusses and rivets instead of welding. this can be placed in a specific time frame

wall tiles show a connection with the old use of the building

building is on the old northern site edge

1

original steel windows frames with lots of patina

open interior for small trucks and cars to be placed in

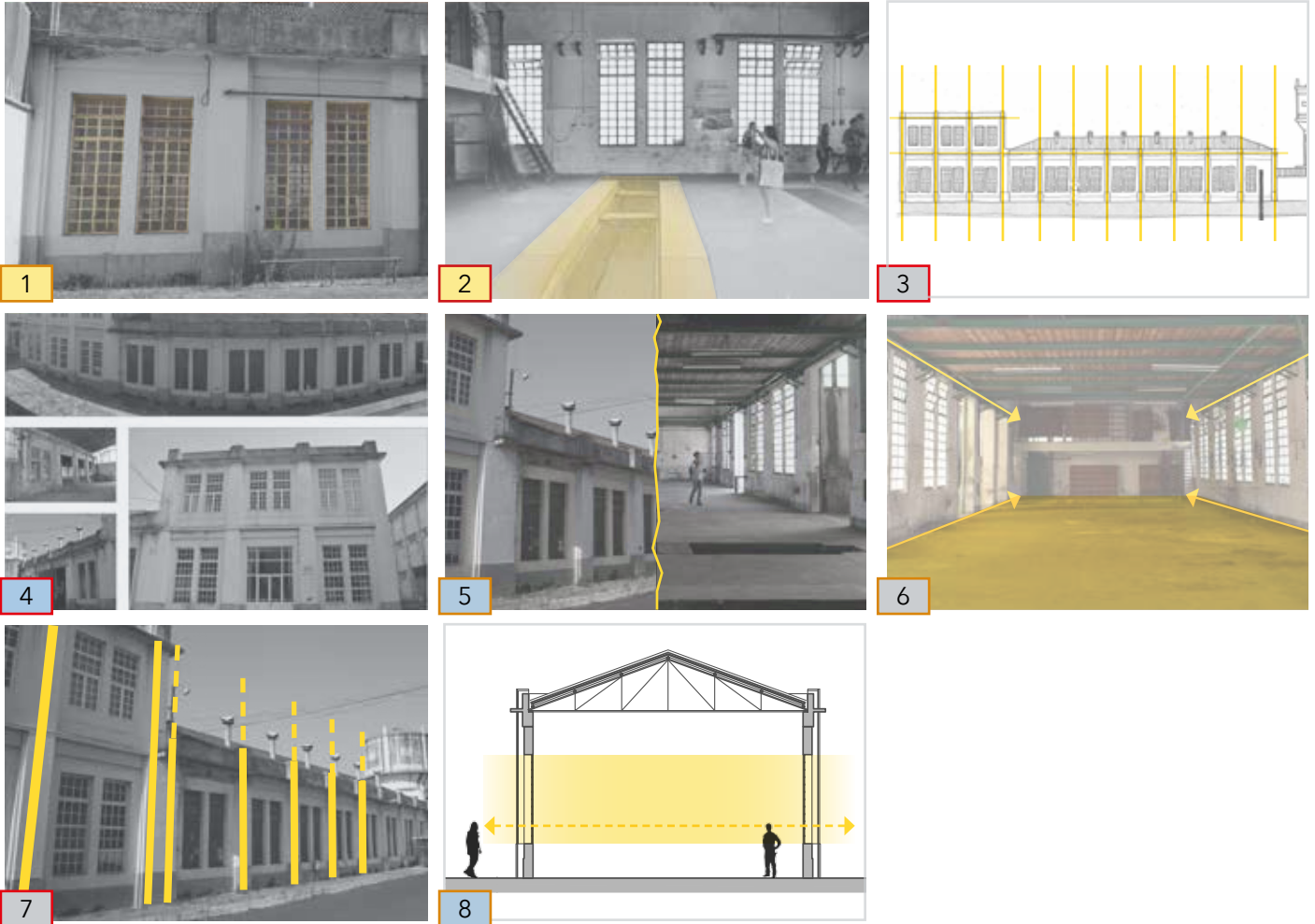
6

load bearing walls are very robust and oversized for their load.

7

facade design is not part of enclosure, facades are open and transparent

8



Car workshop assessment

Like with the site values, the values are shown in the matrix. They are highlighted to which category they belong by means of a colour. The themes stretch out over all scale levels, so things that put a building in a theme can be part of a value that belongs to the site scale.

All the values received a differentiation to show which of the values are more important to my process. The values that received a rating of medium or high are visually elaborated above and briefly elaborated in text per theme.

Spirit of former use

Valuable things that contribute to the atmosphere of the place and remind of the former use are the inspection pit for trucks but also the large steel windows that open like louvres contribute to the workshop atmosphere. Since it was a place where people did the labour instead of machines the building feels more human scale than others.

Disconnection

The workshop building is part of the buildings that have a more aesthetic and monumental facade and feel to them. This creates the sort of strangeness on an industrial site. These architectural buildings are nice on the exterior, but are greasy and dirty on the

interior because of the former functions.

Proportions

The north entrance is morphologically linked to the neighbourhood making it very human scale. The car workshop is one of these buildings. It has a high and lower part which makes it even get smaller towards the entrance. The open facade with low windowsills makes it one of the most friendly buildings designed for human activity. The interior shows the characteristic shape and openness that are linked to a garage-like function with open workshop space.

Themes:

spirit of former use

disconnection

proportions

Differentiation:

high

medium

low

Cannery

NOSTALGIC

CONFLICT

NEWNESS

USE

COMMEMORATIVE

ARTISTIC

HISTORICAL

AGE

SUR-ROUNDINGS

5

parallel to entrance street. Building is the north site ending

STORY

STUFF

freezer equipment shows latest use of building

SERVICES

PLAN SPACE

6

multiple small buildings connected behind one facade

STRUCTURE

7

structure makes interior space flexible in use

SKIN

development in roof construction visible special trusses

8

Pragmatic facade big doors, high windows. Maximum light and storage behind

SITE

facade of building follows/covers development

9

Build separate from the MMC until added to site

SOCIAL

3

special trusses

4

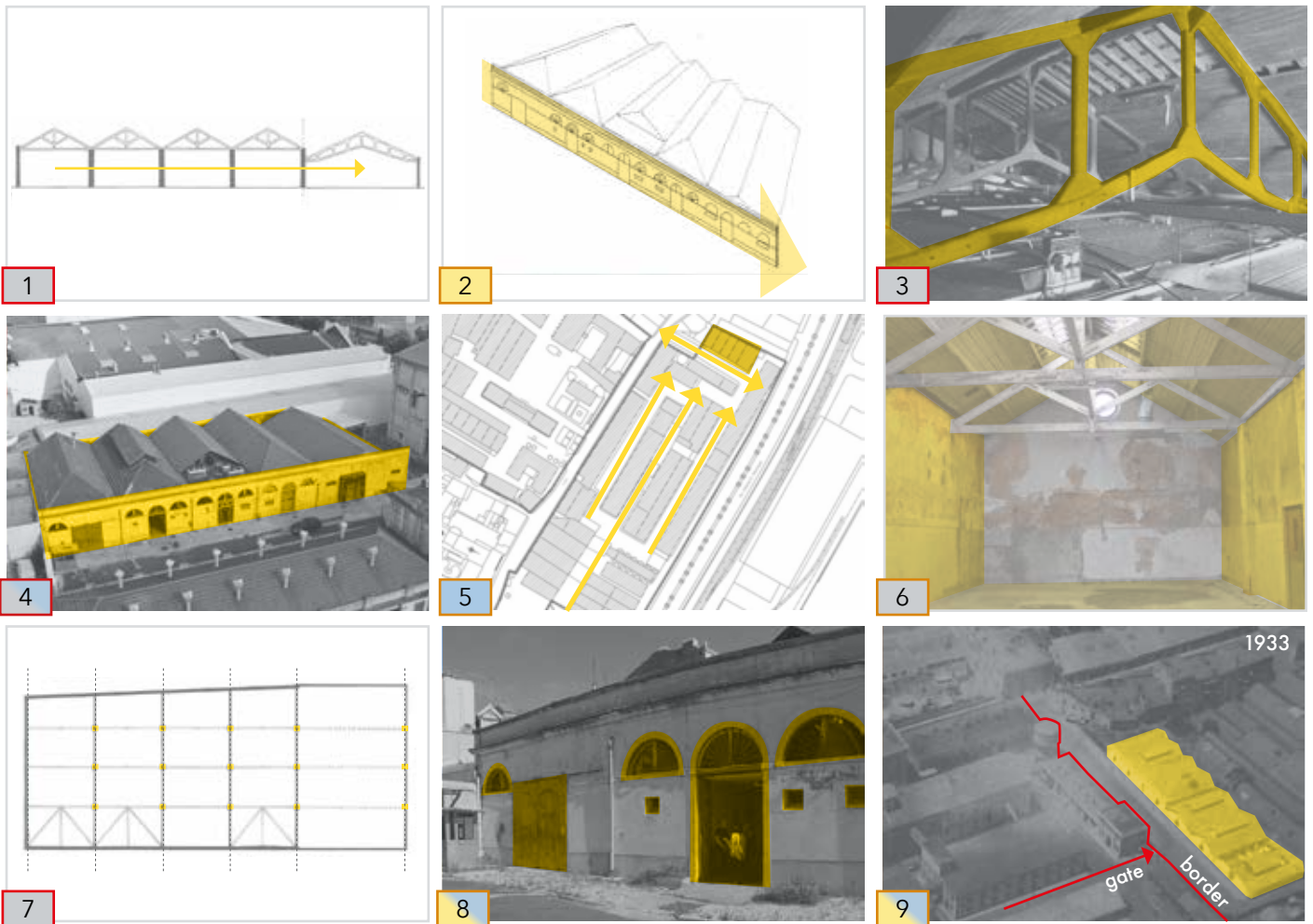
facade wraps around the multiple buildings as a ribbon

1

development in roof construction visible special trusses

2

facade of building follows/covers development



Cannery assessment

The values are shown in the matrix. They are highlighted to which category they belong by means of a colour. The themes stretch out over all scale levels, so things that put a building in a theme can be part of a value that belongs to the site scale.

All the values received a differentiation to show which of the values are more important to my process. The values that received a rating of medium or high are visually elaborated above and briefly elaborated in text per theme.

Spirit of former use

The use of this buildings was changed multiple times and the building grew and shrunk with it. The buildings was last used as a frozen food storage, the modern equipment remains inside today. The facade has followed this development as a decor piece where the interior changed behind. These changes are still visible in the way they added new facade pieces in line with the old. The also facade reminds of the former storage function by the large doors and small high placed windows.

Disconnection

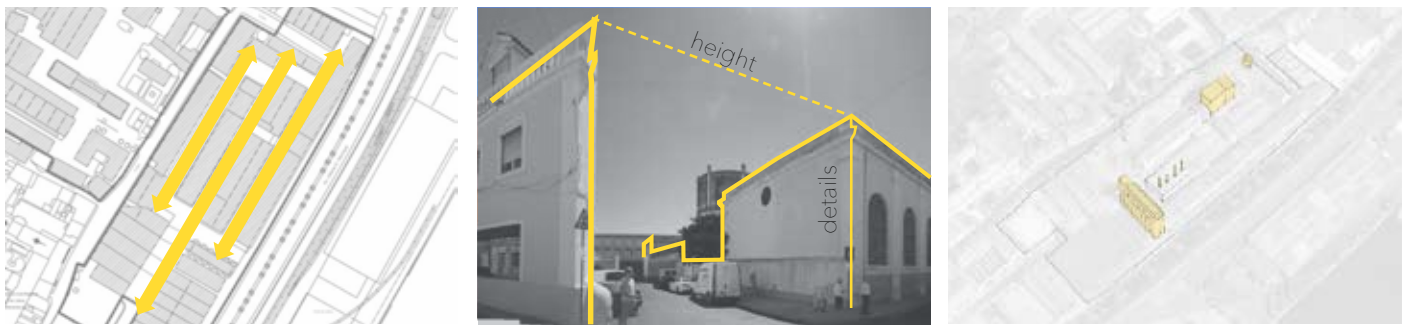
As becomes evident in frame 9 and can be still seen on frame 5, the old cannery was not part of the site at first. This explains why the north part of the site is organised so differently compared

to the rest of the site. The facade of the cannery does show reminders of this. The high windows with bars in front and heavy doors. When closed this facade forms a closed wall, keeping save that what is put inside. Non of the other buildings on site have this because there was always a wall around the site.

Proportions

The building is the peak of the human scale on site. The small bays feel like small buildings which are nice for people to stay into. The pragmatic way in how they used and extended this building is very industrial. Even so the strange concrete trusses are a typical engineer speciality often found in military/industrial sites. The cannery brings these two worlds together.

Site



Car workshop



structure

Street



connection

Cannery



military engineering



proportion



openness



bays



length



opposing facades



decor facade

fig. 8 - summary of values (own images, 2016)

Position and Dilemmas

The MMC being a former military complex has great historical value for the country given the relation it has to Portugal as a nation. The complex grew and changed due to the political atmosphere in the country. This is something that is less specific for the MMC but something that is tied to the site being of military and religious origin.

The themes that followed out of valuing with the matrix are the three main values that are deemed important to the MMC and position myself against the site. The **spirit of former use** is what makes the MMC special as a facilitating factory to the Portuguese army. It embodies atmosphere of the place and the buildings, valuing the relation with the former production and operation of the site. **Disconnection** is the term that unites all of the contrasts on site, where a connection seems lost. It values the way history changed the site and the impact it had on the physical state. Contrast and strangeness are found a lot, but they peak at the (weird) corner of the north entrance as an imperfect place. In his book *The Stones of Venice* Ruskin argues that 'no architecture can be truly noble which is not imperfect' and 'it [imperfection] is the sign (...) of a state of progress and change' (Pevsner, 1969, p. 22-24). So in a way the strangeness that occurred over time is valued as part of the evolution of the complex. Finally **proportions** values the physical, the diversity of size and typology in relation to the human scale. It is partly connected with the other two. The diversity is perceivable from all over the site as no two buildings are alike. The diversity makes experiencing the site and buildings special for the MMC partly by contrasts but the MMC has because of its diversity.

Along the process the themes present in the values pose dilemmas on specific design aspects. These dilemmas will be in need of positioning for a design. The dilemmas are not an obstacle waiting to be overcome. They can be better described as catalysts for creating the best design solutions. Solutions that will not only improve the design but will also enhance the old building or place and raise its value. Three (one of each theme) will be elaborated.

Spirit of former use

The theme spirit of the former use is for the north corner already a dilemma in itself. There was no production here, elements that remind of past times are scarce. The history will never be as clear as when the building was still in use or when visited in a vacant state. The Car-workshop where the former use is materialised in the inspection pit and small tokens throughout the interior that are linked to cars and other motorized transport. There are no references to the building being a car-workshop in the exterior of the building, only the interior gives suggestions.



fig. 9 - Inspection pit and checker flag tile detail (own images, 2016)

The most obvious are the inspection pits, yet they are also the most mono functional and hard to reuse aspects given they are just a trench in the floor. More subtle is the space itself, an open plan space meant for people to use not machines. On the one hand it is a gift to receive a building with so little obstructions in the interior space such as giant machines. On the other hand it becomes extremely hard to incorporate what little history there is into a design without losing the value.

Disconnection

The imperfection of the north entrance is a product of time, growth of the complex and the border enclosing the site. For reusing the site this needs to be changed.



fig. 9 - flow of streets on north entrance

The highly valued longitudinal street structure faces a dead end on the line of the car-workshop (the former border), visible in fig. 9. When making changes in this you come into conflict with the site enclosure and in the entrance to the site. Also the risk of blurring the existing contrasts is at stake when adding entrances and removing walls. Tampering with the current street structure will remove the strangeness, that has occurred as a product of time and pragmatism of the MMC users, which is part of the atmosphere and experience. A dilemma exists between restoring functionality and keeping the atmosphere.

Proportions

The new program for my design elaboration is a cultural centre focussed around theatre, dance and music. This program should be located here because of the close connection with the neighbourhood. But such program is asking for a lot of space in square meters. The chosen location on the site is, as mentioned before, the north entrance area closest to the neighbourhood.

Here the buildings are the most human scale and the smallest in square meters. This asks for an extension of the car workshop and/or the cannery. The car-workshop is valued for a strong structure, fig. 10. So using this would be logical.



fig. 10 - extension of car-workshop

Everything about the workshop is related to the fact that people did the labour here and not the machines. Human dimension determines the office and workshop proportions. With this open workshop floor the dilemma is to maintain openness and height/width but also giving it a new purpose with a new function. So where to place program generates the dilemma even before the question of what kind of program.



aerial photo 2016 - source: Google maps (maps.google.nl)

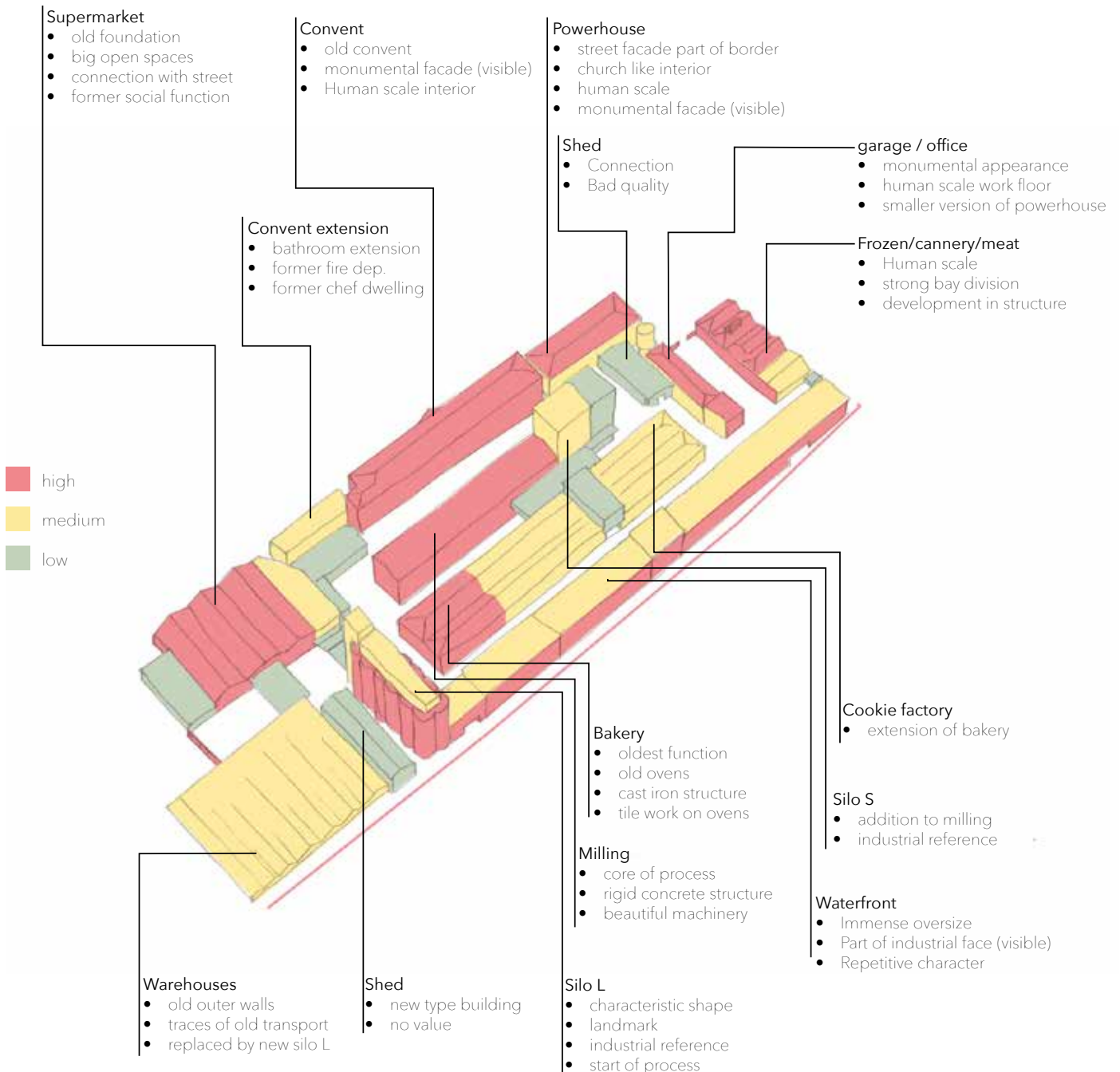
Site - Traffic light method

On the scale of the whole site an overview of valuable buildings can now be made and will help guard the values found in the assessment. The MMC contains a lot of different buildings all build in close proximity to each other. To have a foundation for designing a masterplan the below rough valuing of the buildings is shown on the basis of the analysis and the themes derived from the matrix. This scale does not do justice to the buildings. All of the buildings deserve a thorough investigation and value assessment on their own. However this exercise did provide direction in dealing with the masterplan scale, for instance the green buildings are deemed of less value. This green layer is based mostly on being a later additions to buildings, or as a part

that makes the rest less distinct.

Some buildings receive multiple colours like the long water front building for instance, where facade towards the busy street has always been a familiar face to the harbour and passers-by. Thus being a face carrying the identity of the site to the surroundings, which is something to be taken into account when redesigning said building. Further more the original and oldest buildings/ building parts are valued the highest.

This is not a fixed product. As we continue designing these ideas can be changed or found irrelevant.



Bibliography

Brand, S. (1994). *How buildings learn. What happens after they're built*. New York: Penguin Books USA

Breitling, S., & Cramer, J. (2007). *Architecture in existing fabric*. Basel, Switzerland: Birkhäuser Verlag AG

Docomomo int. (2016) documentation provided by Docomomo for international workshop MMC september 2016

Pevsner, N. (1969). *Ruskin and Viollet-le-Duc: Englishness and Frenchness in the appreciation of Gothic architecture*. London, Great Britain: Thames and Hudson

Riegl, A., 'The Modern Cult of Monuments', in: Price, S., Mansfield, N., Talley, K. & Vaccaro, A.M. (eds.) (1996) *Philosophical Issues of Cultural Heritage, Readings in Conservation*, Los Angeles: Getty Conservation Institute, p. 69-83; ERA Architects