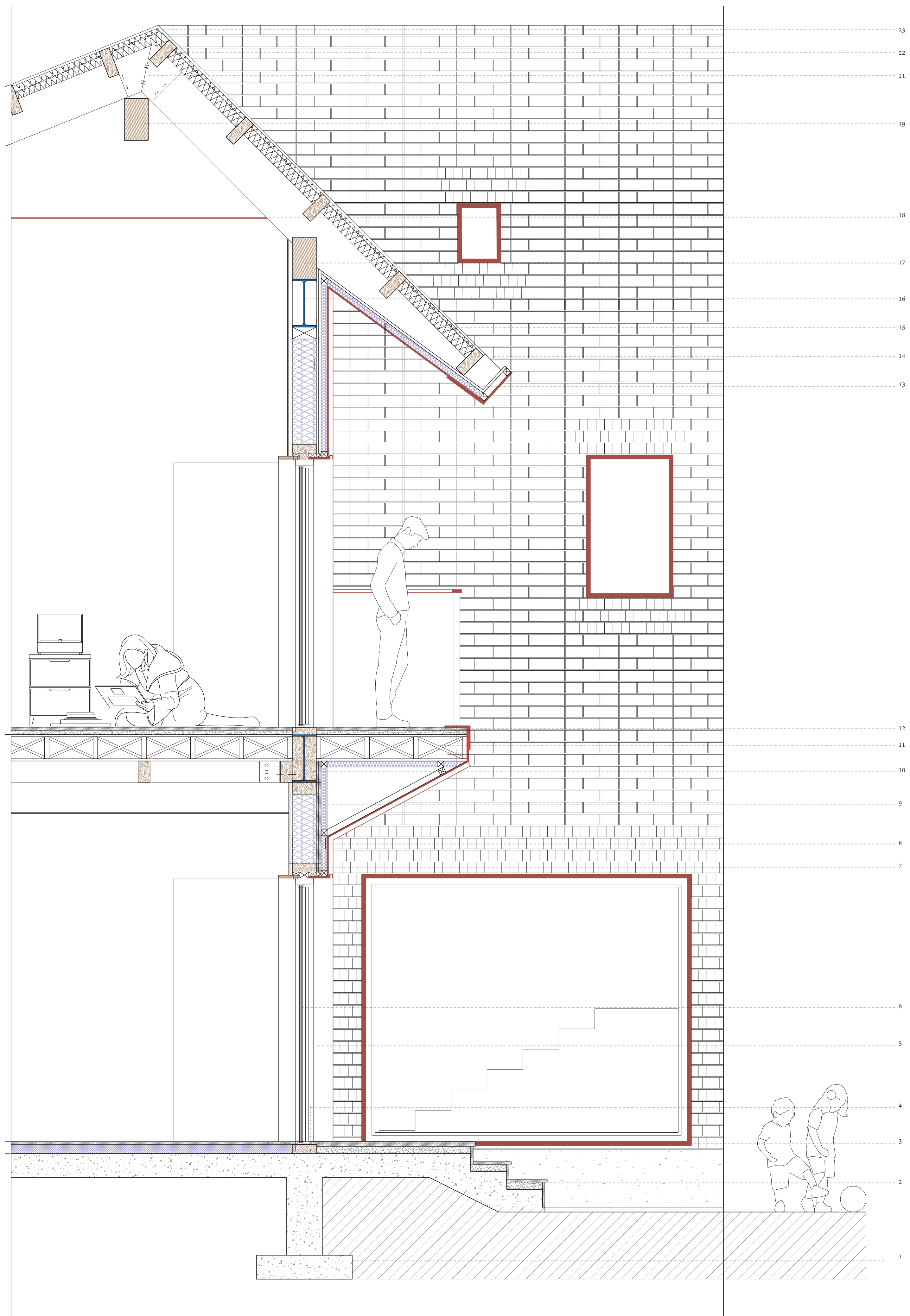
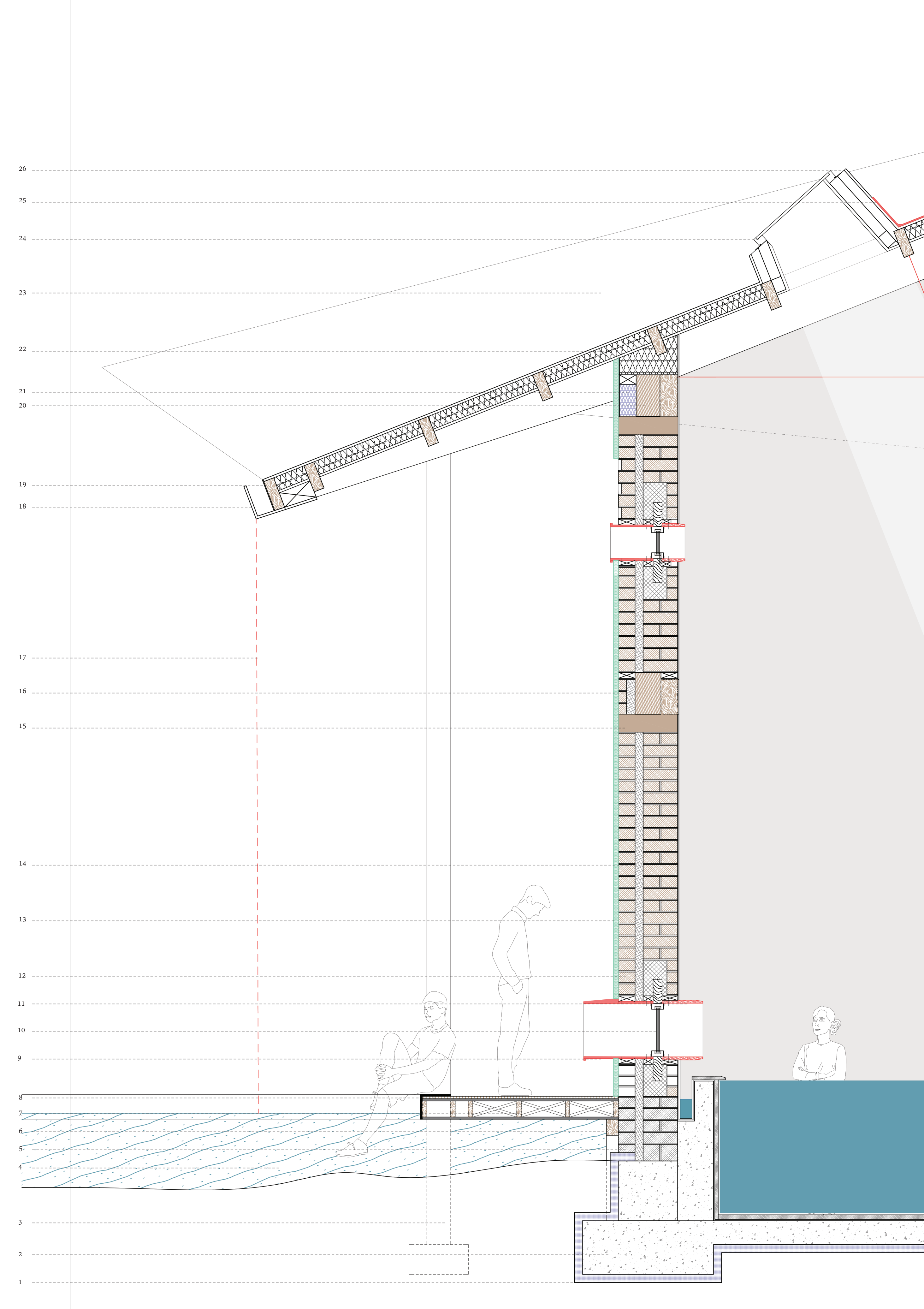


- 1 70mm thk. waterproofing and compact insulation
- 2 450x1100mm concrete footing
- 3 steel column footing in elevation
- 4 Wetland/ niche overflow
- 5 150mm thk. lean CEB blocks (waterproof variant)
- 6 wooden support for decking
- 7 40x150mm wooden joists
- 8 20mm thk. wooden decking
- 9 12mm thk. steel window frame with drip course
- 10 double insulated fixed glass window
- 11 Interior wooden frame detail
- 12 150x150mm lean CEB
- 13 40mm thk. limeplaster with recycled glass
- 14 70mm thk. straw and hemp vapour open insulation
- 15 150x50mm wooden stiffener
- 16 200x200mm intermediate ring beam for support
- 17 Steel rain chain
- 18 150x270mm steel gutter
- 19 90x150mm wooden roof purlin
- 20 350x200mm wooden top ring beam
- 21 150mm thk. compact insulation
- 22 100mm thk. compact roof insulation
- 23 steel corrugated roof in elevation
- 24 flushed skylight
- 25 intermediate gutter at skylight edge
- 26 12mm thk. steel corrugated sheet roof

Bathroom detail (1:20)
(Heterotopia)



- 1 Existing concrete footing
- 2 20mm thk. terrazzo tile
- 3 40mm thk. terrazzo finish floor
- 4 75x200mm bottom rail
- 5 12mm thk. steel frame in elevation
- 6 Double insulated glass sliding door
- 7 75x200mm thk. top rail
- 8 200mm thk. compact insulation for wooden dry wall
- 9 50mm thk. compact insulation between facade members
- 10 200x400mm re-used steel beam
- 11 steel cross bracing between joists
- 12 12mm thk. steel L-cupping
- 13 12mm thk. Viroc-cement bonded particle board cladding
- 14 200x200mm gutter
- 15 100mm thk. compact roof insulation
- 16 200x400mm re-used steel beam
- 17 200x400mm top beam
- 18 steel tension cable in elevation
- 19 200x400mm ridge beam
- 20 steel anchor plate bolted to rafters
- 21 100x200mm wooden purlins
- 22 12mm thk. corrugated metal sheet roof

North facing housing detail (1:20)
(Urban)

