

LOW SKY, WIDE HORIZON

Methods of Analysis & Imagination:
A Matter of Scale

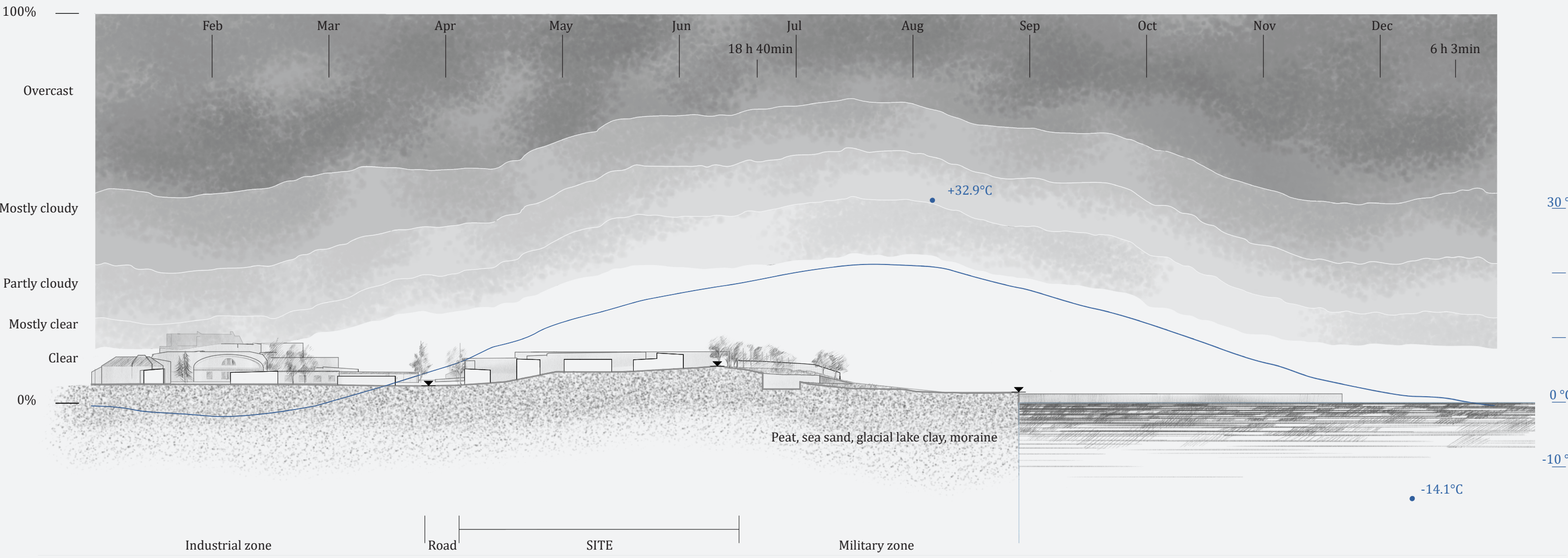
Miglė Zabielaite

Understanding the landscape



Analysis of the coastline, mapping activity and accessibility

1:2000



Vertical analysis of the site

1:2000

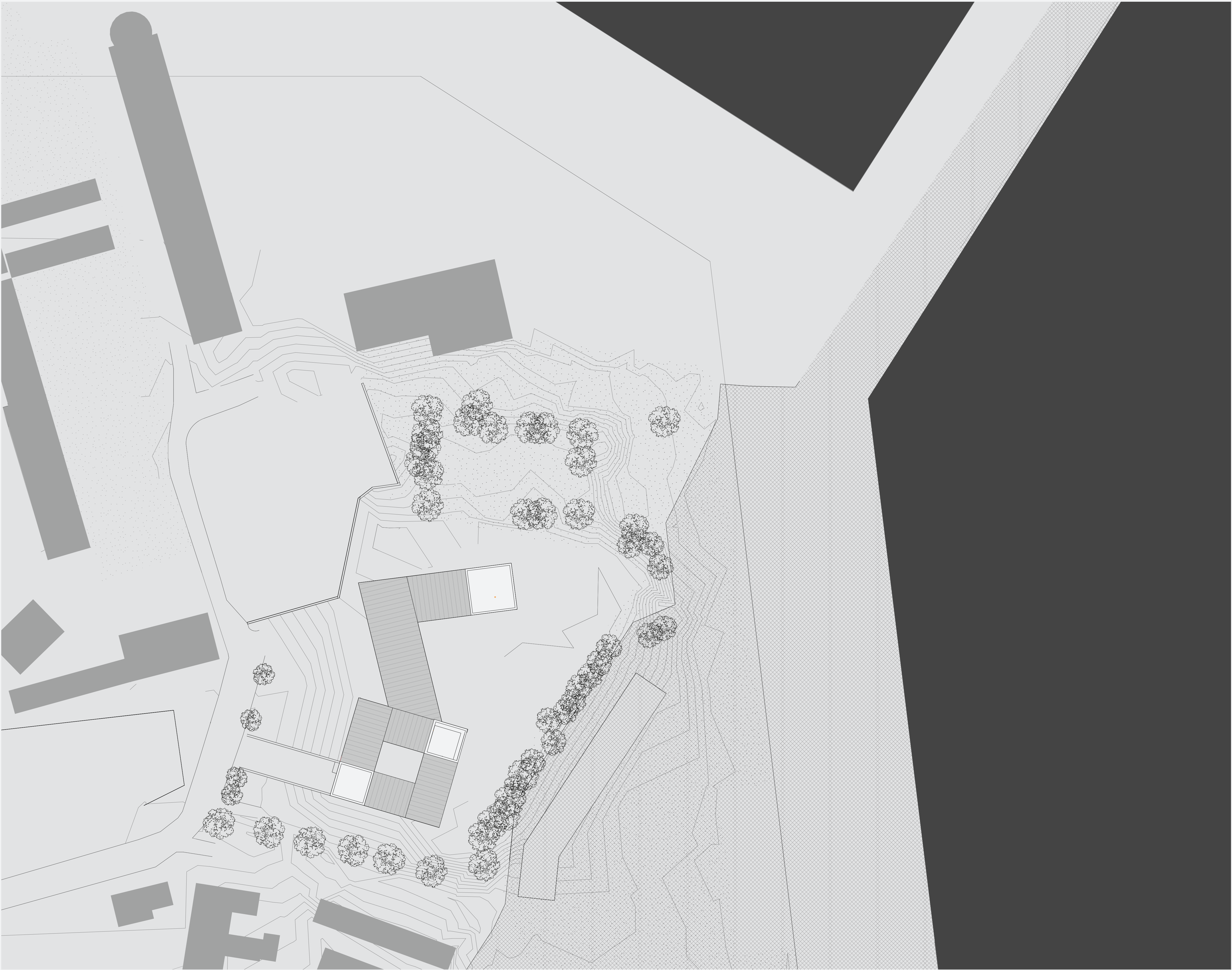


Site photographs



Horizontal analysis of the site

1:2000



Massing in context

1:500



Street elevation

1:00

Facade detail

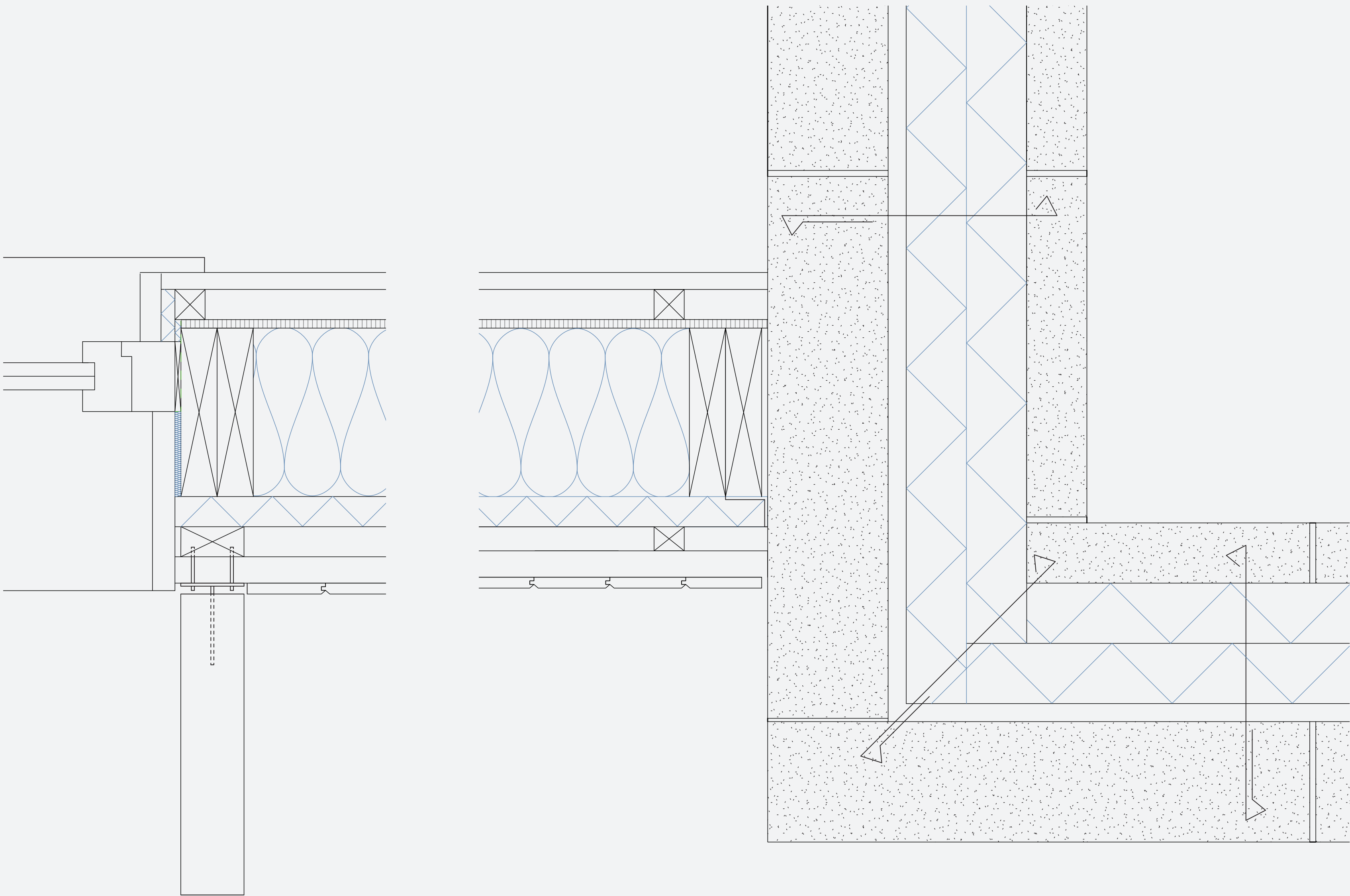
1:5

Timber stud wall

- | | |
|----------|---|
| INTERIOR | 22 mm timber cladding |
| | 50 mm service void |
| | Vapour barrier |
| | 12.5 mm plywood board |
| | 280 mm wool insulated timber stud frame |
| | 50 mm wood fibre insulation |
| | 40 mm counter battens |
| | 25 mm battens |
| EXTERIOR | 22 mm vertical timber cladding] |
| | U-value - 0.135 W/(m²K) |

Stone cavity wall

- | | |
|----------|-----------------------------------|
| INTERIOR | 100 mm limestone |
| | 100 mm wood fibre insulated board |
| | 100 mm wood fibre insulated board |
| | 40 mm ventilated gap |
| | 200 mm limestone |
| EXTERIOR | U-value - 0.2 W/(m²K) |

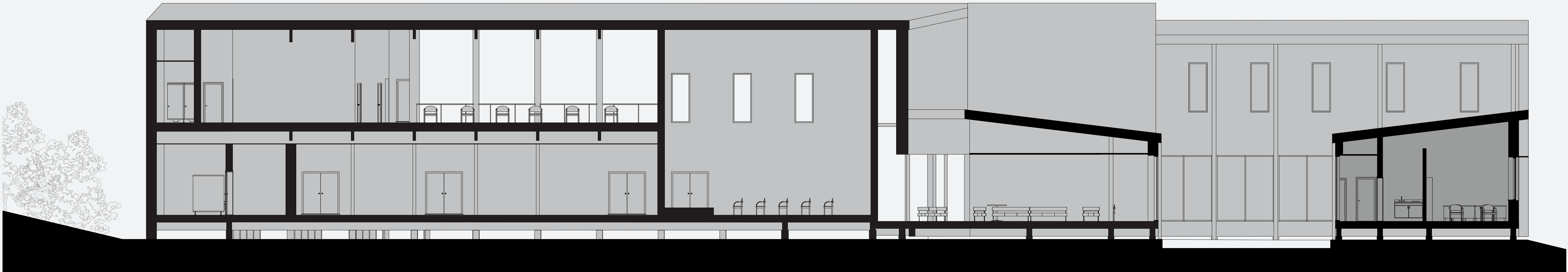


MAIN FLOOR PLAN

First floor plan

1:100

- 1. Cafe
- 2. Kitchen
- 3. WC
- 4. Celebration space
- 5. Study
- 6. Group room, small
- 7. Group room, large
- 8. Meeting room
- 9. Admin
- 10. Hall
- 11. Workspace
- 12. Dance space
- 13. Changing space
- 14. Youth terrace



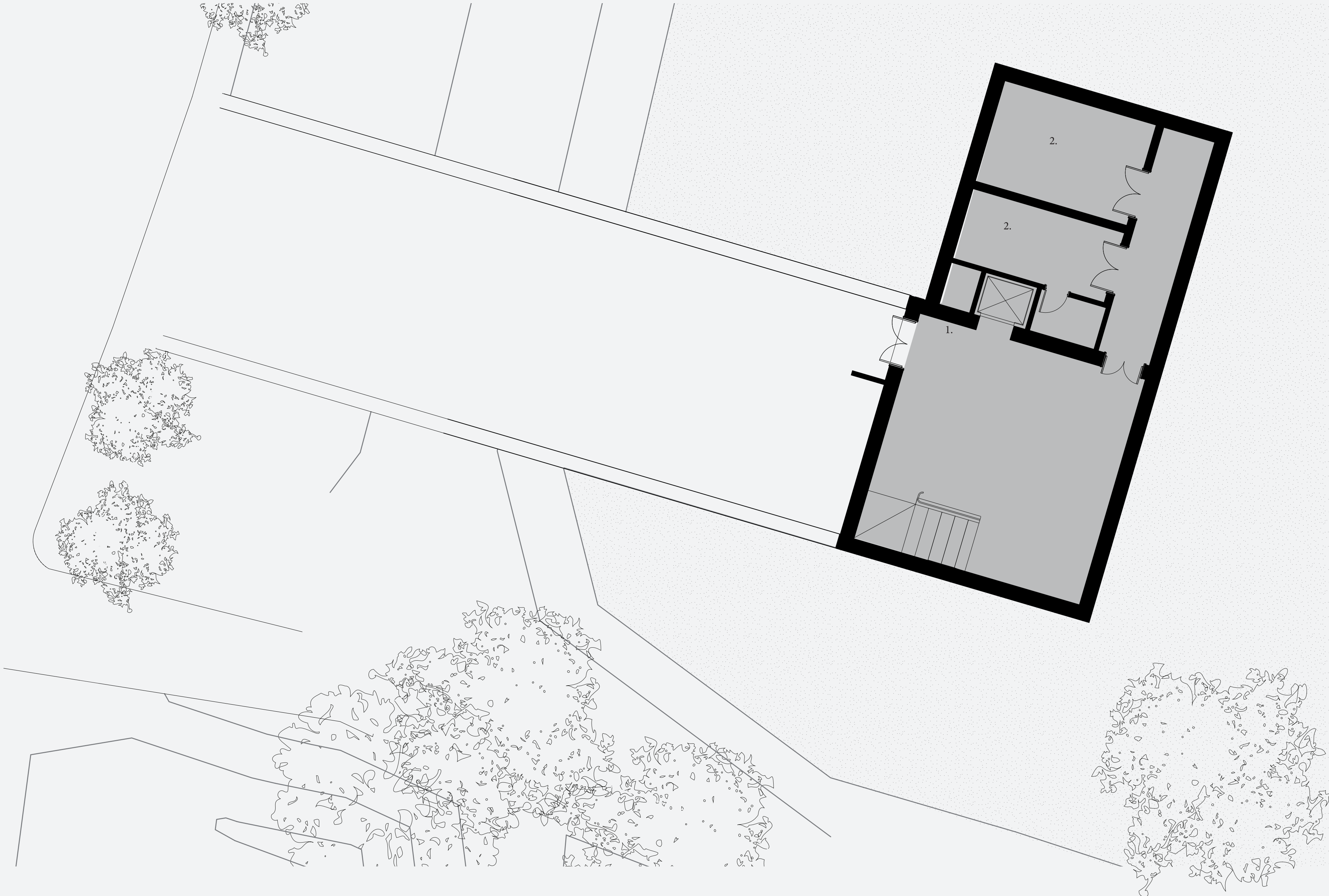
Composite section

1:100

Basement floor plan

1:100

- 1. Entrance
- 2. Storage



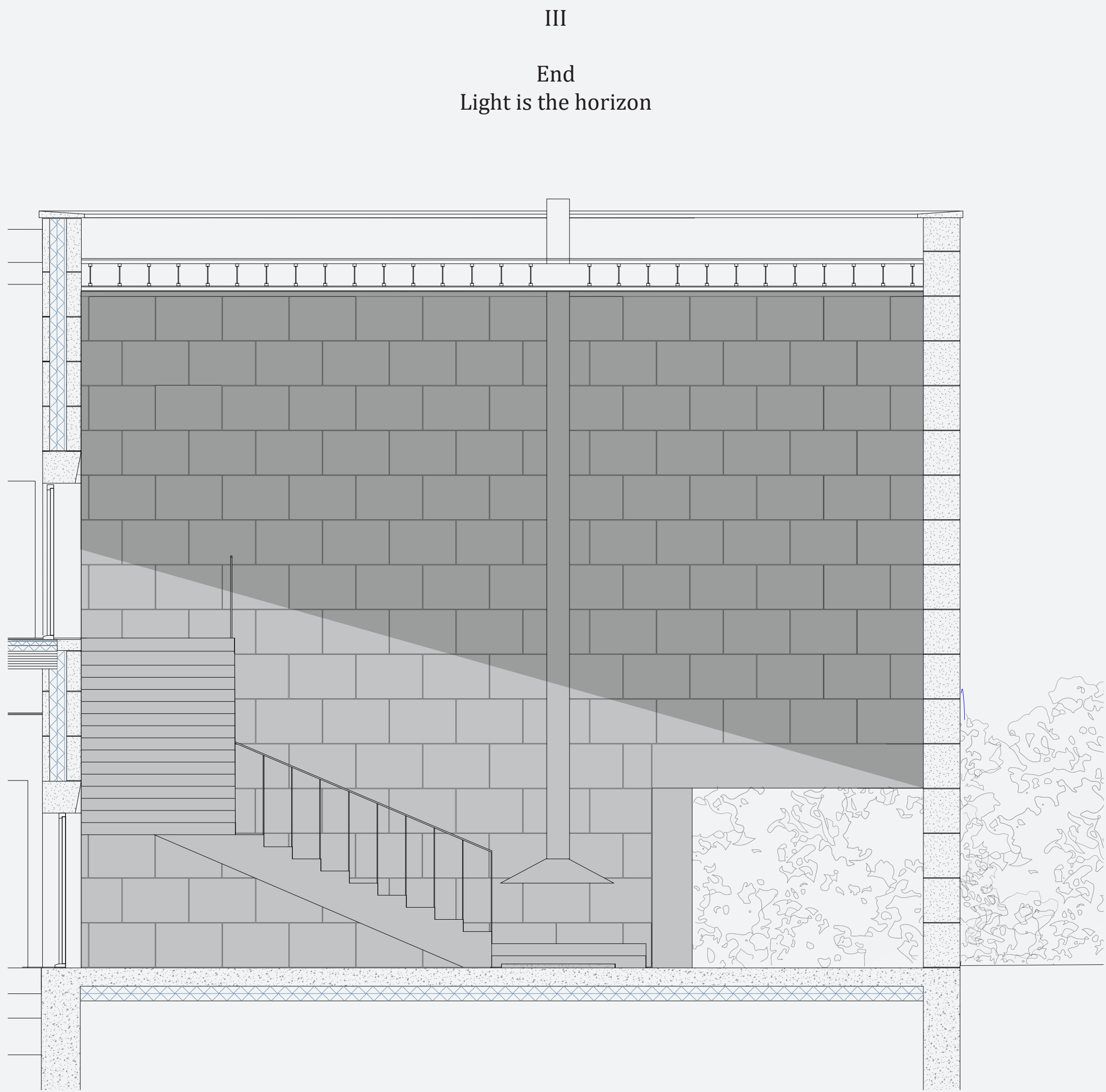
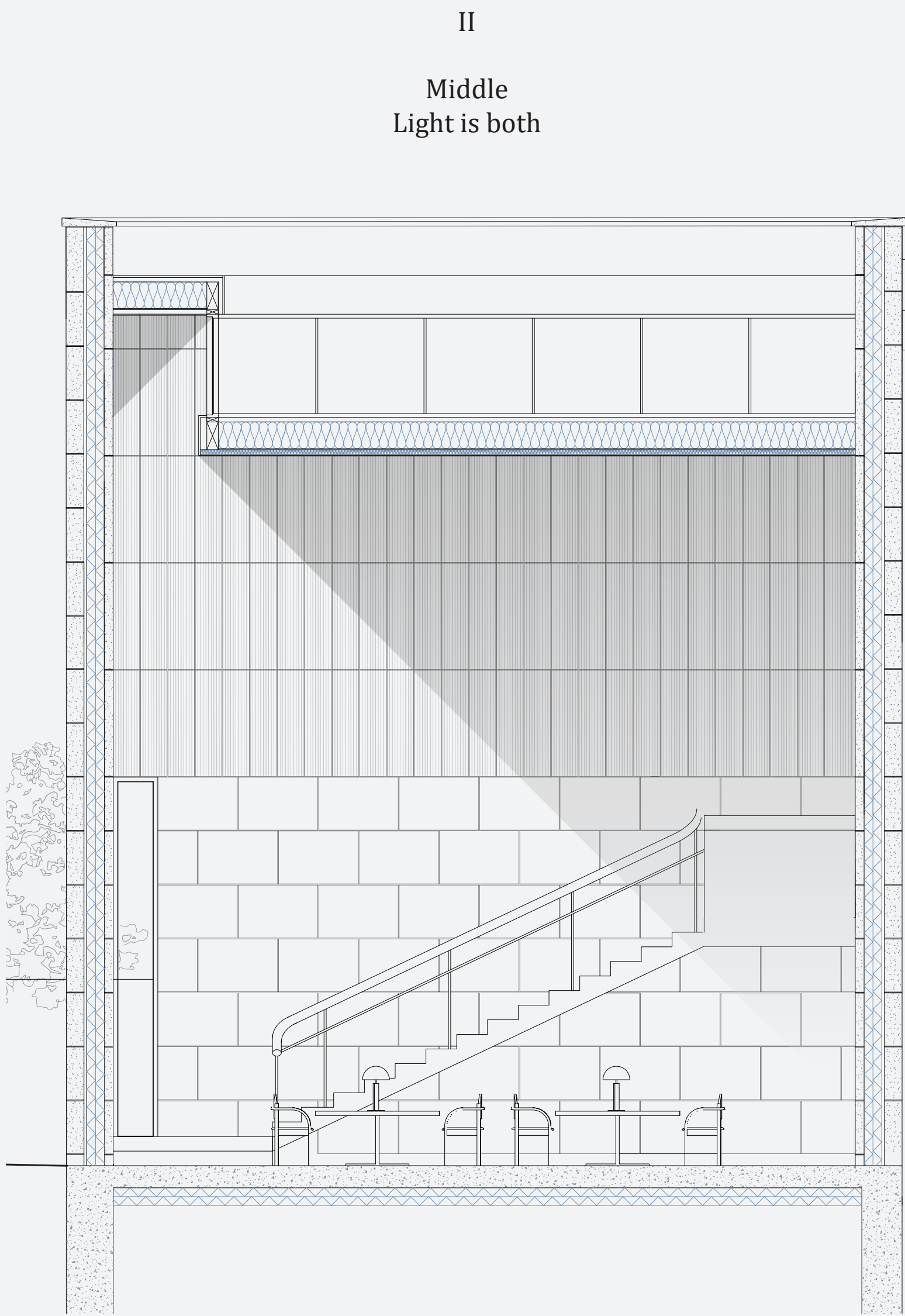
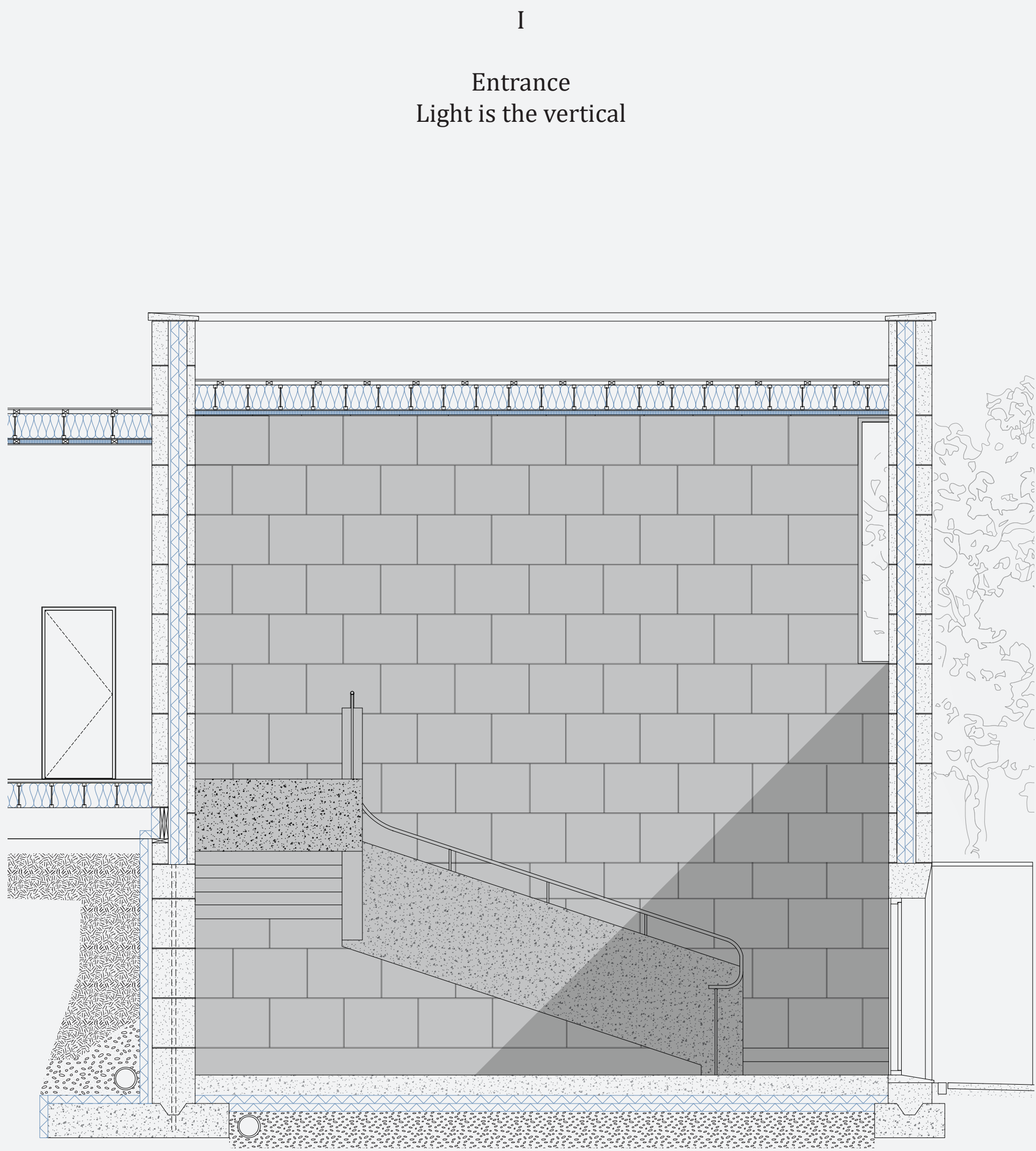
Second floor plan

1:100

- 1. Group room
- 2. Enclosed free space
- 3. Open free space
- 4. WC
- 5. Storage

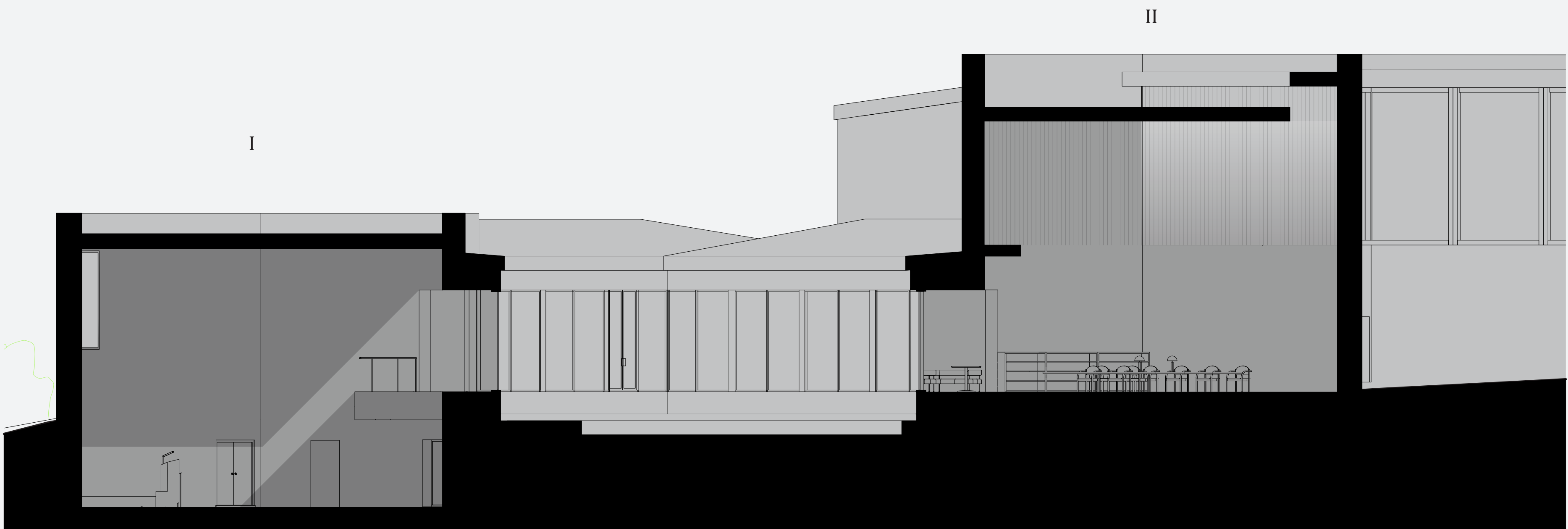
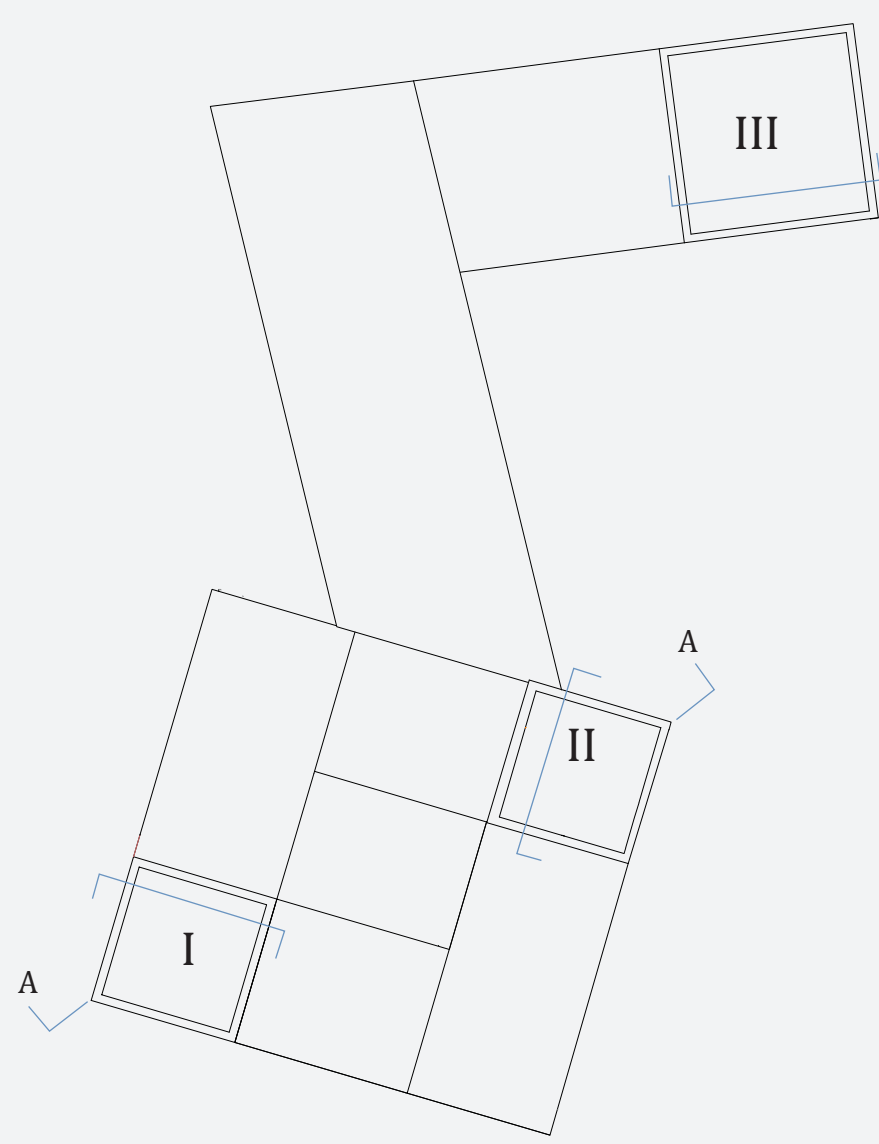


Three double height spaces articulate the building



Sections

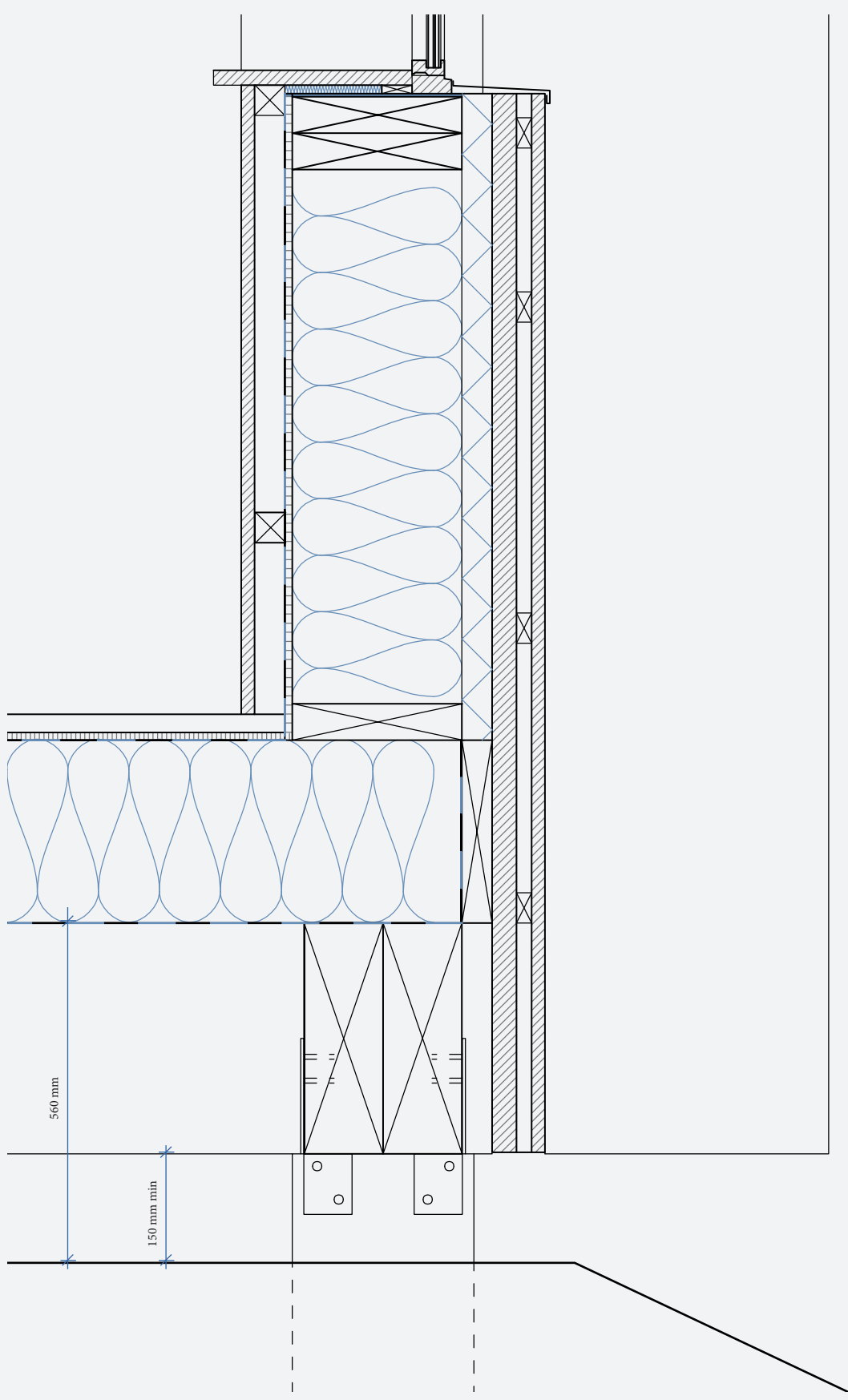
1:50



Section AA

1:100

Space I and II in topographic context



Below and above

Floor structures

1:10

Elevated floor structure supported by timber piles

EXTERIOR Breather membrane
 302 mm timber I-joist floor with
 wool infill
INTERIOR 12.5 mm sheathing
 30 mm terrazzo

Limestone and concrete retaining wall

