



The Healthy School

Westfort Leprosy Asylum

Westfort was founded in 1897 by the former Zuid Afrikaansche Republiek (ZAR)



Westfort Leprosy Asylum

Westfort was founded in 1897 by the former Zuid Afrikaansche Republiek (ZAR)



Westfort Leprosy Asylum

Westfort was founded in 1897 by the former Zuid Afrikaansche Republiek (ZAR)



Westfort Leprosy Asylum

Westfort was founded in 1897 by the former Zuid Afrikaansche Republiek (ZAR)



Westfort Leprosy Asylum

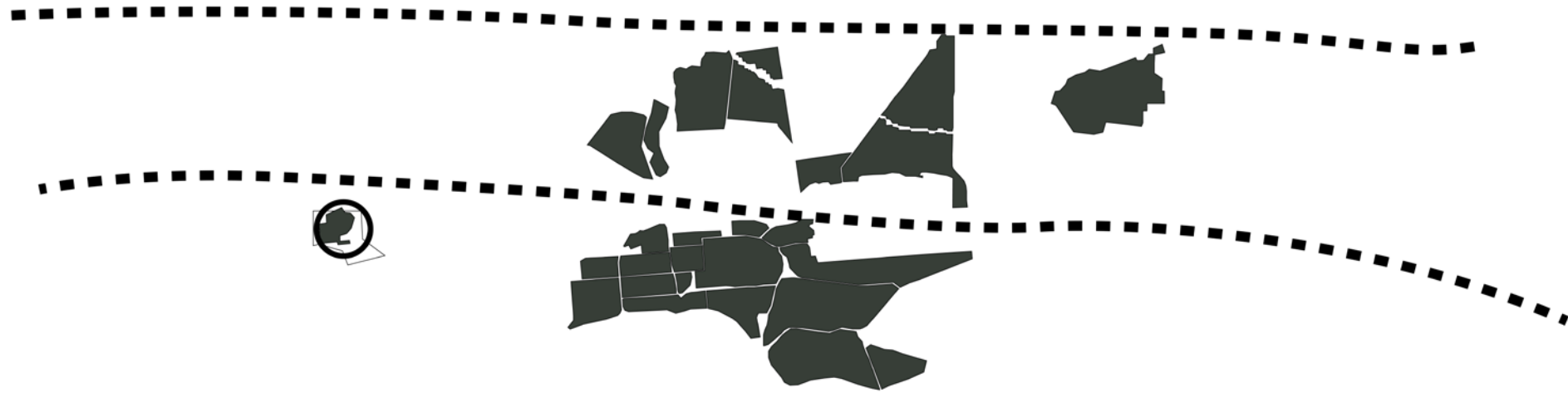
Westfort was founded in 1897 by the former Zuid Afrikaansche Republiek (ZAR)



Westfort Leprosy Asylum

Westfort was founded in 1897 by the former Zuid Afrikaansche Republiek (ZAR)

Located 10 km outside of the centre of Pretoria



Westfort Leprosy Asylum

Westfort was founded in 1897 by the former Zuid Afrikaansche Republiek (ZAR)

Now overrun by urban sprawl

Located 10 km outside of the centre of Pretoria



Westfort Leprosy Asylum

Westfort was founded in 1897 by the former Zuid Afrikaansche Republiek (ZAR)

Now overrun by urban sprawl

Located 10 km outside of the centre of Pretoria



Westfort Leprosy Asylum

Westfort was founded in 1897 by the former Zuid Afrikaansche Republiek (ZAR)

Located 10 km outside of the centre of Pretoria

Now overrun by urban sprawl

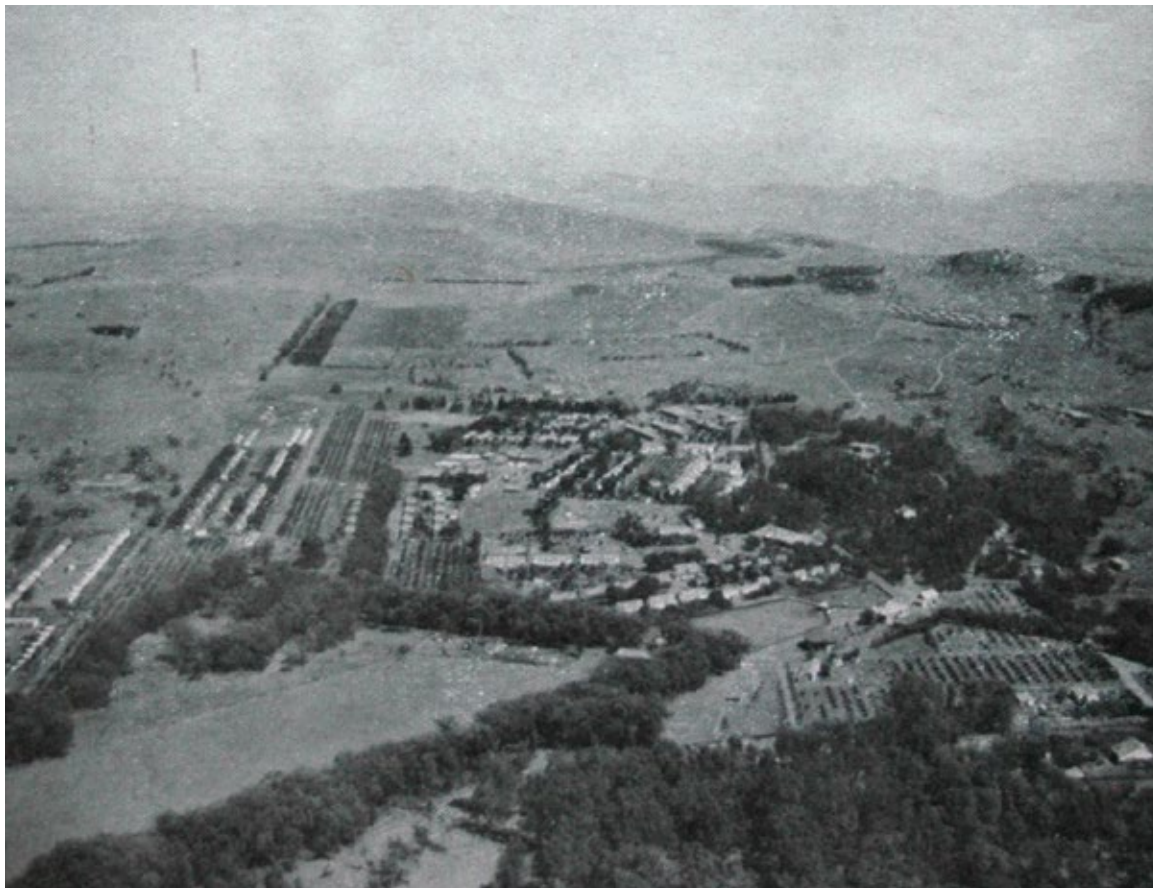
Green was abundantly used

Third development | 1930 - 1950

Vegetation

Legenda

- Garden
- Vegetable garden (for kitchen)
- Orchard
- Unknown tree
- Eucalyptus camaldulensis
- Unknown tree



Aerial view of the Leprosy Institute about 1956 (source: NASA collection, UP).



Westfort Leprosy Asylum

Westfort was founded in 1897 by the former Zuid Afrikaansche Republiek (ZAR)

Located 10 km outside of the centre of Pretoria

Now overrun by urban sprawl

Green was abundantly used

Segregation of patients



“Education is a major target for the government, mainly because of the poor results... ...South Africa scores relatively bad, it spends on average more money per pupil but has under average school results”

Wilkinson (2013)

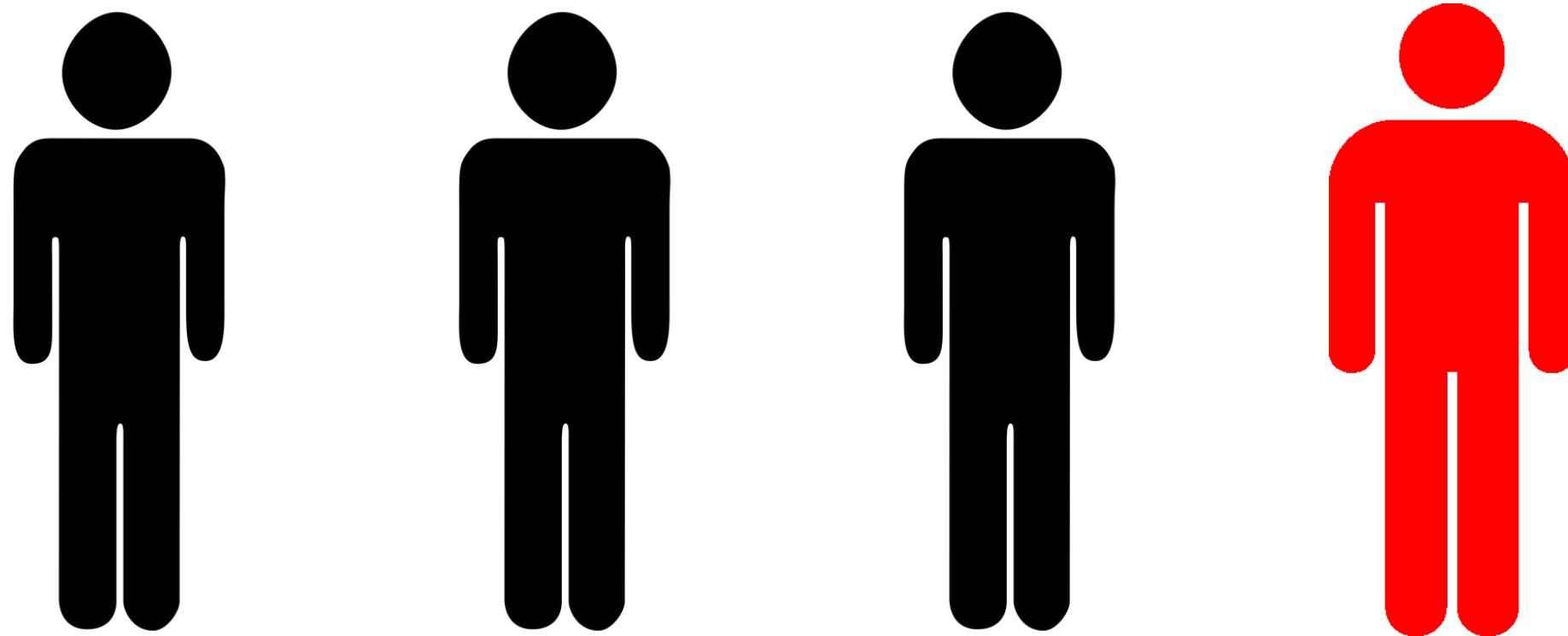
“The South-African education is known for its great inequality. There is a major difference between whites and blacks.”

Nkabinde (1997)

South Africa today

Education is relatively bad

A quarter of the population lives in extreme poverty



South Africa today

Education is relatively bad

A quarter of the population lives in extreme poverty

Westfort as a refuge



South Africa today

Education is relatively bad

A quarter of the population lives in extreme poverty

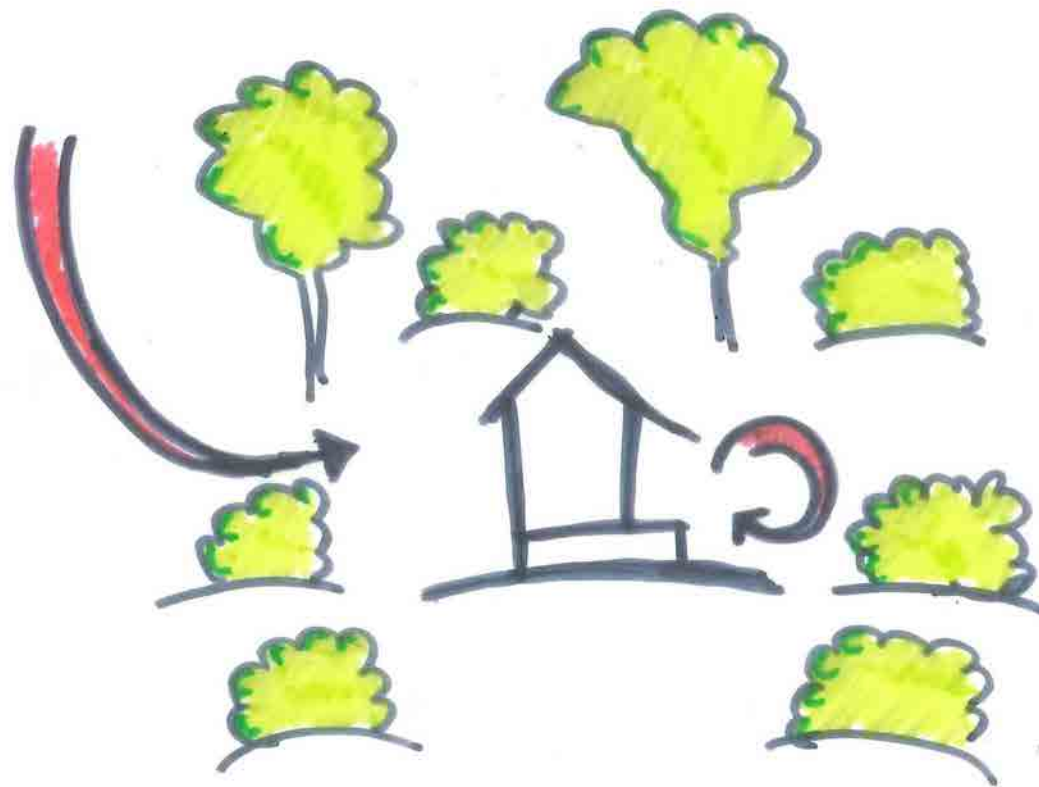
Westfort as a refuge



Westfort was a final destination

Westfort used to be a place excluded from society

Where people could find different layers of privacy

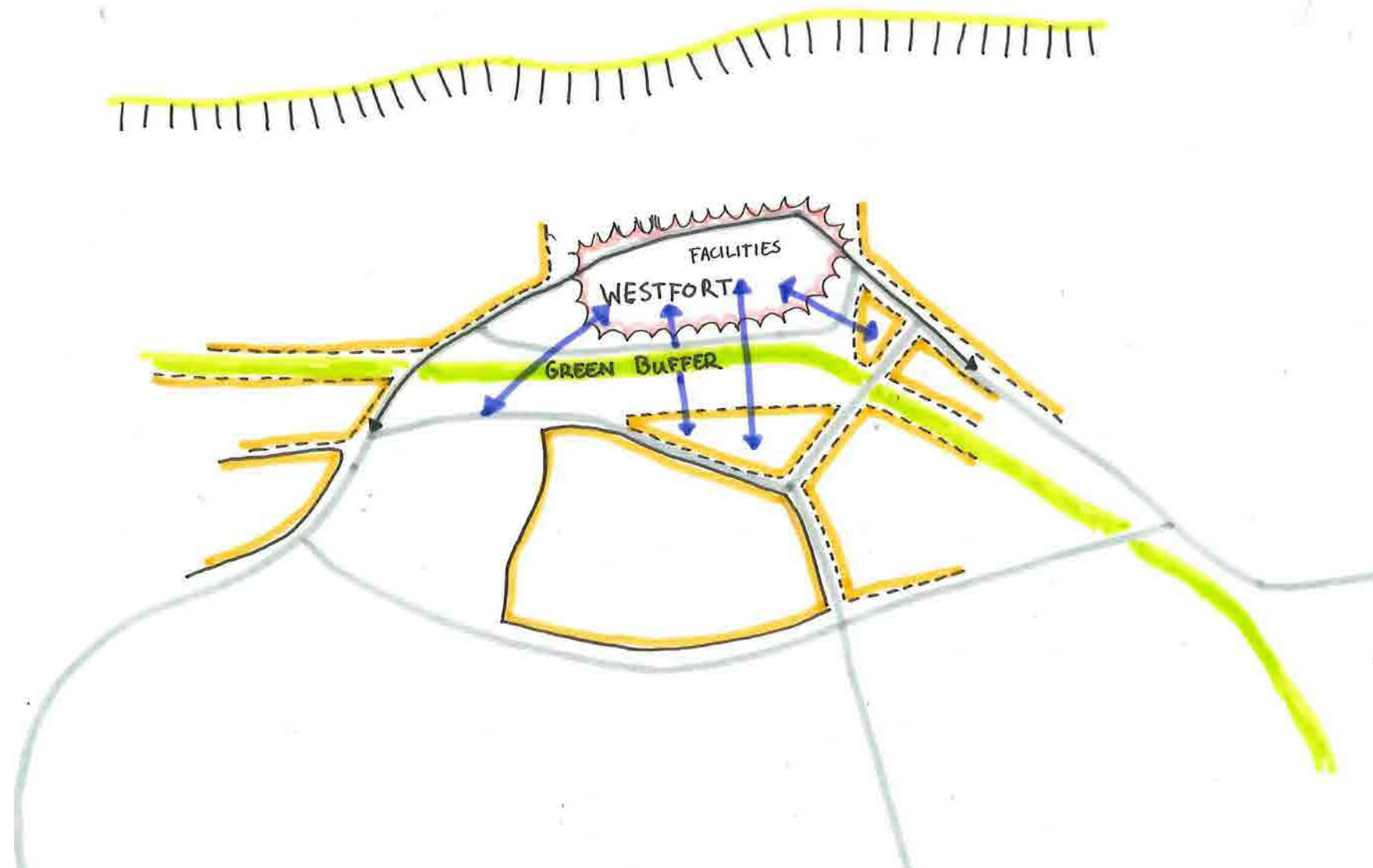


Make Westfort a Centre for the area

Introduce facilities in Westfort

Enhance the green area to provide a buffer with the new development

Connect Westfort with its surroundings

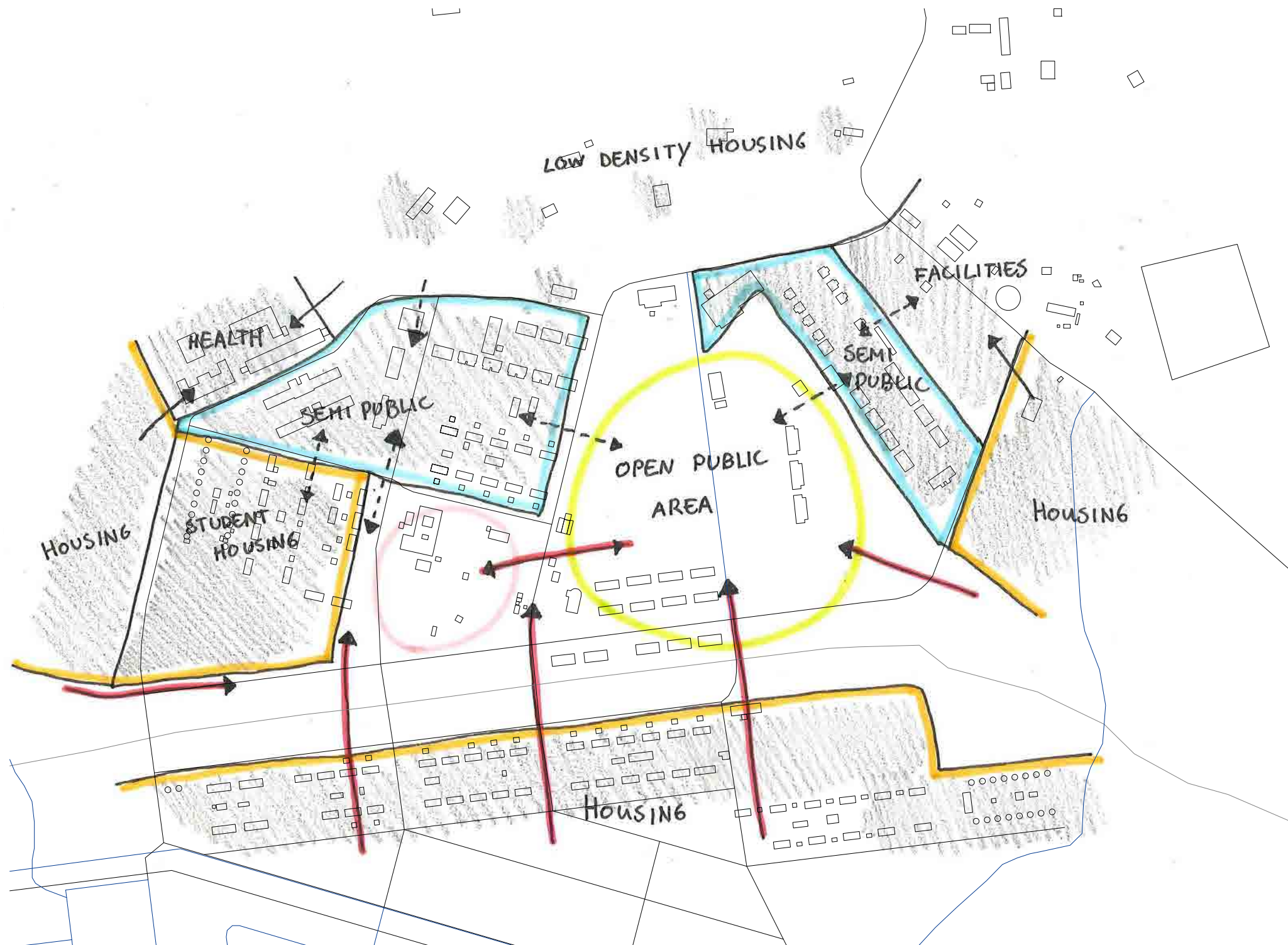


Make Westfort a Centre for the area

Introduce facilities in Westfort

Enhance the green area to provide a buffer with the new development

Connect Westfort with its surroundings

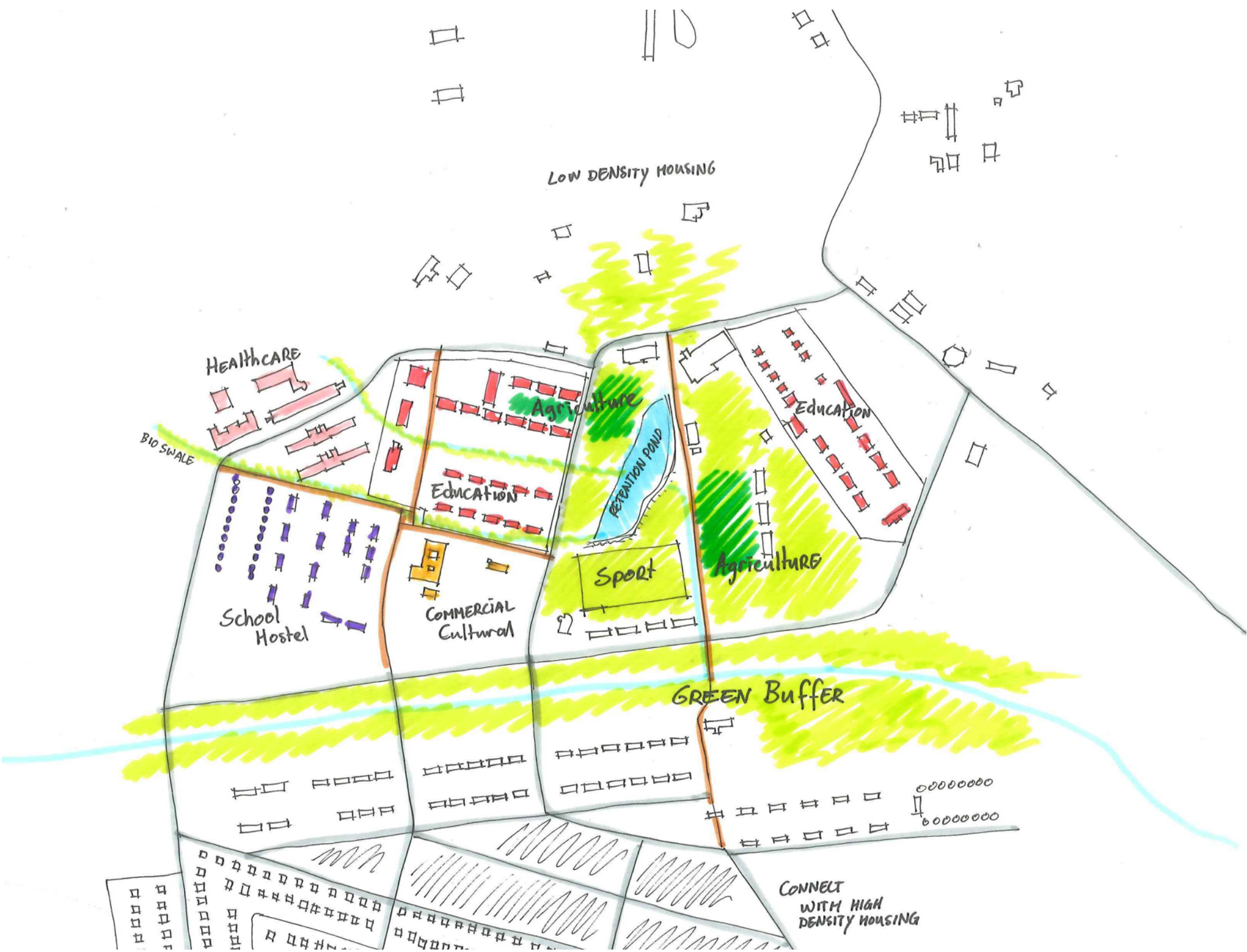


Water management

South Africa endures hot humid summers and cool dry winters

Retention ponds and Bioswales help to guide the water through the area

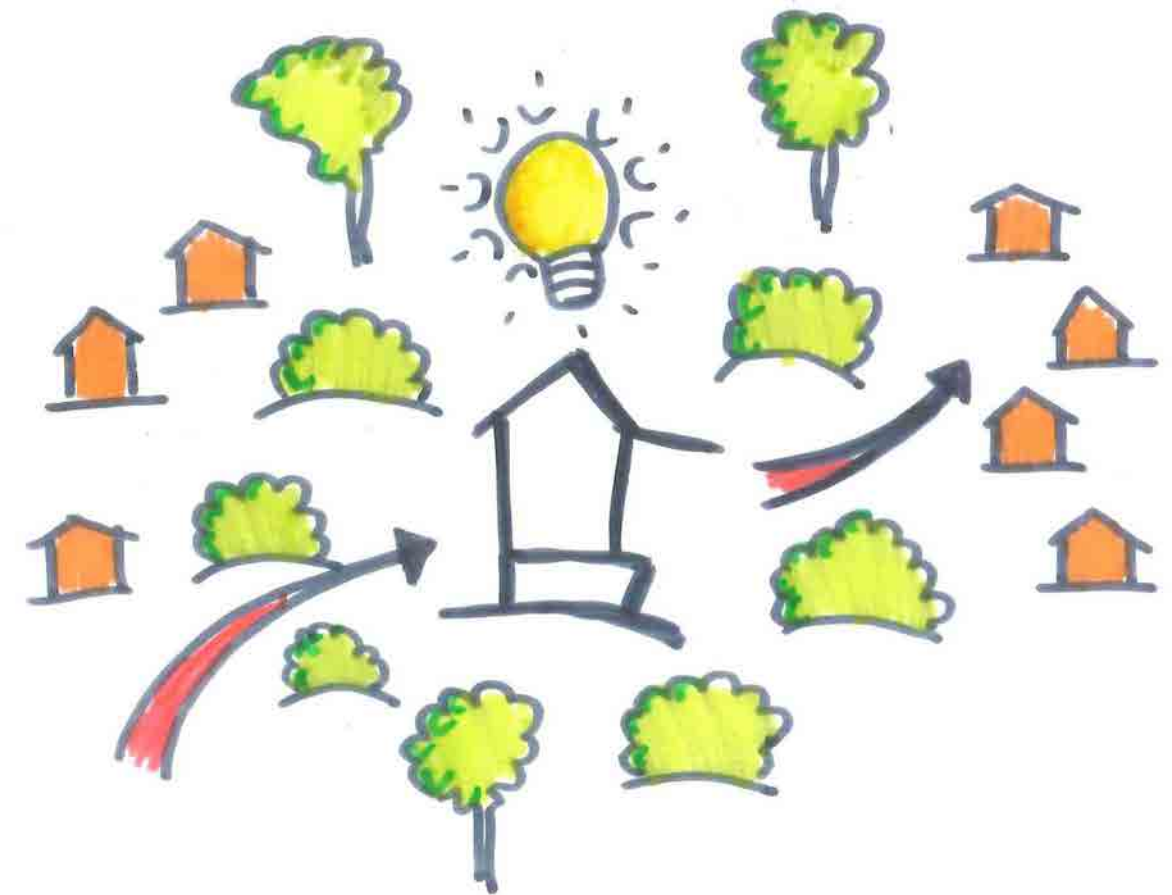
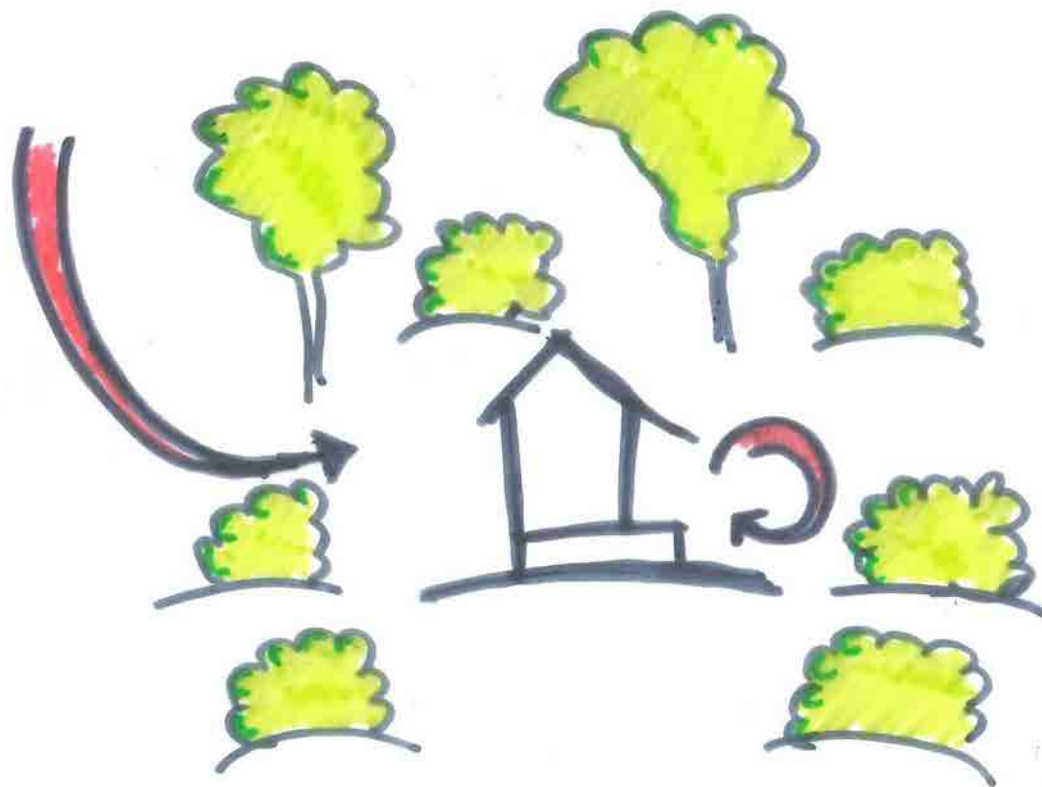




Urban Strategy

Make Westfort a place of inclusion rather than exclusion

A starting point rather than an ending point



The Healthy School

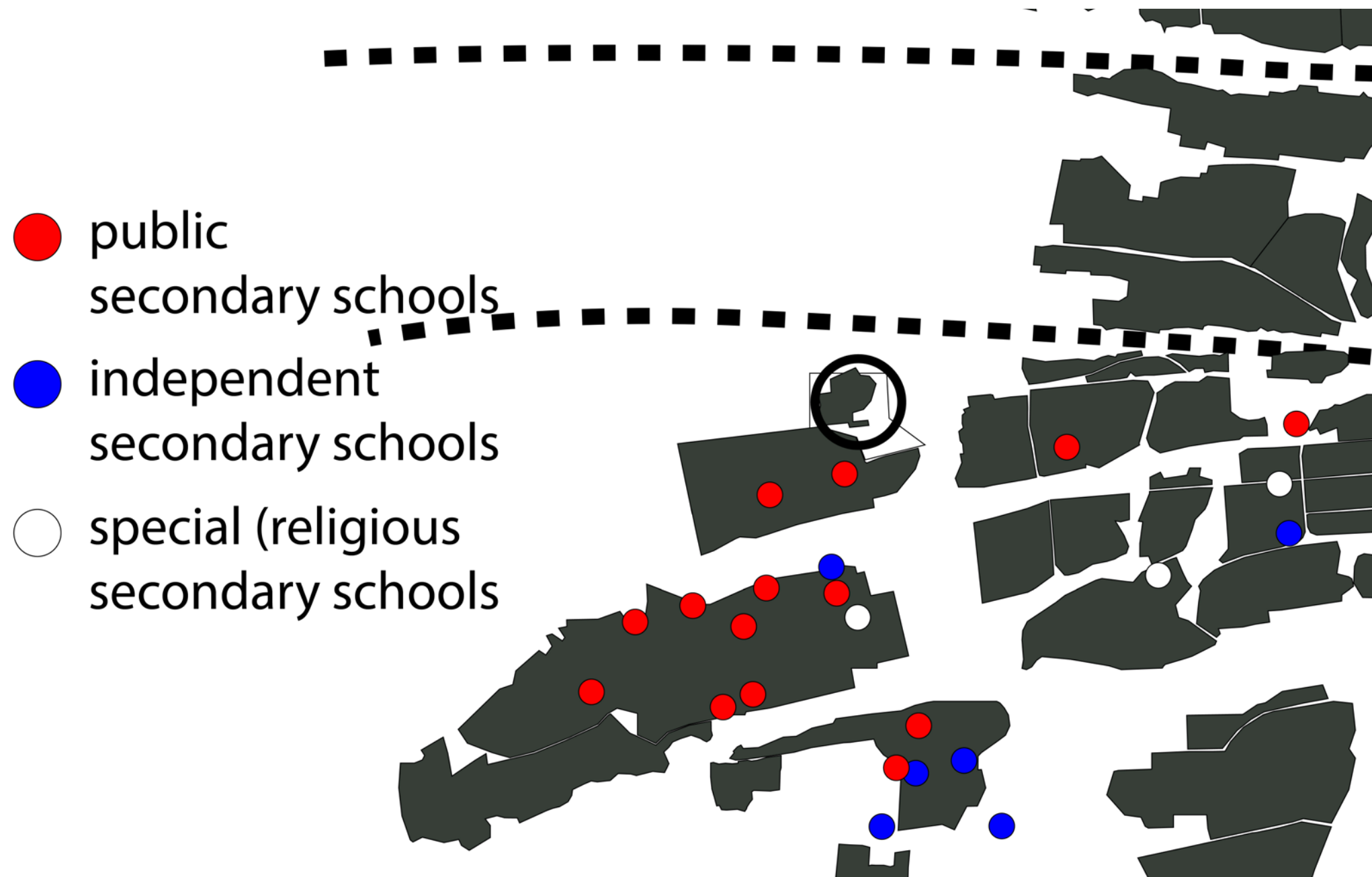
A secondary school is an ideal starting point



An independent secondary school

Schools cannot refuse students from their direct surroundings

An independent school can offer a higher quality of education



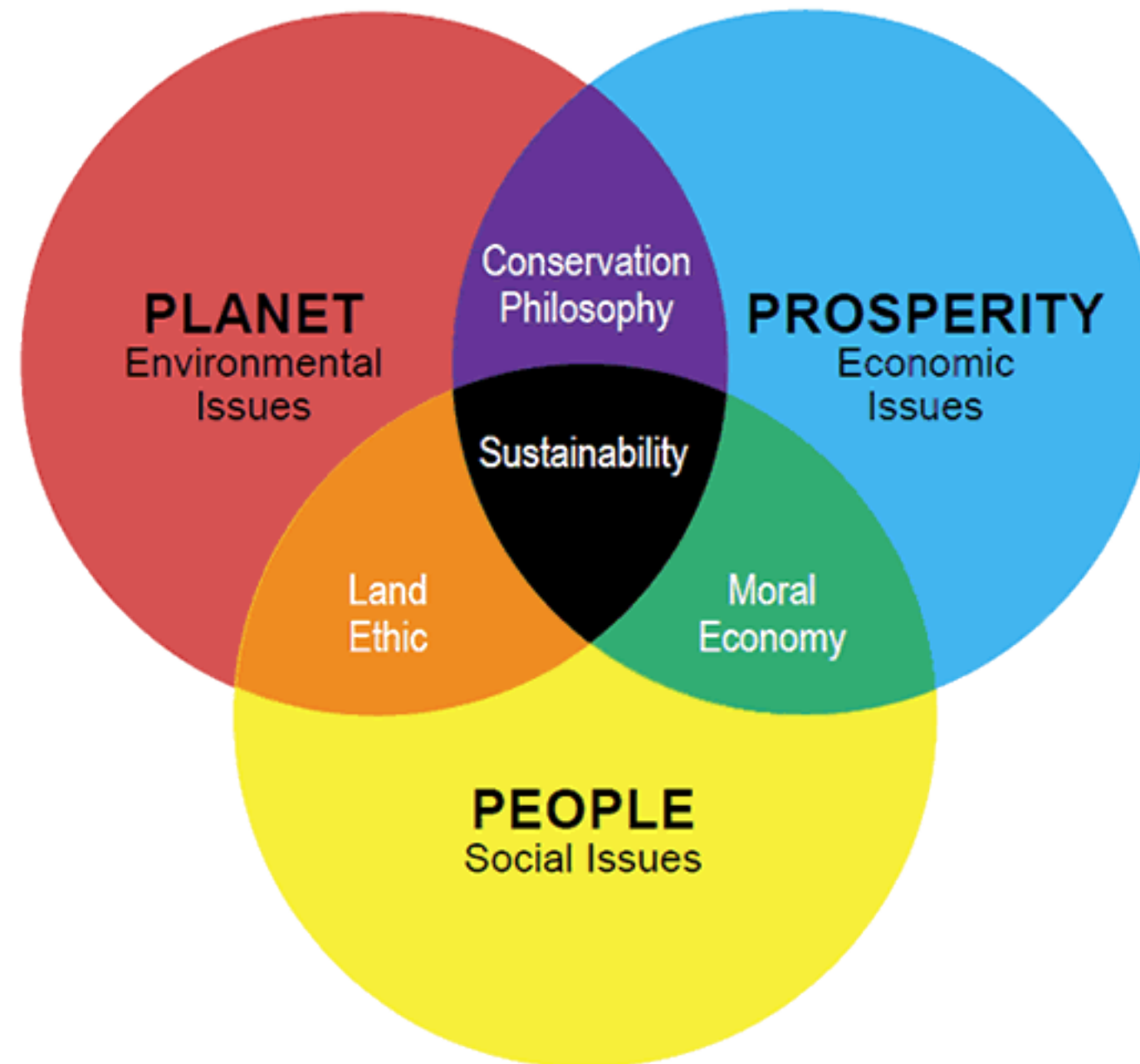
An independent secondary school

Schools cannot refuse students from their direct surroundings

An independent school can offer a higher quality of education

A sustainable school is a must in this day and age

- *Utilizing the elements
- *Low environmental impact
- *Reuse of the existing
- *Inspirational and usefull environment



Location

Central location

Two clusters and staff buildings



Location

Central location

Two clusters and staff buildings



Location

Central location

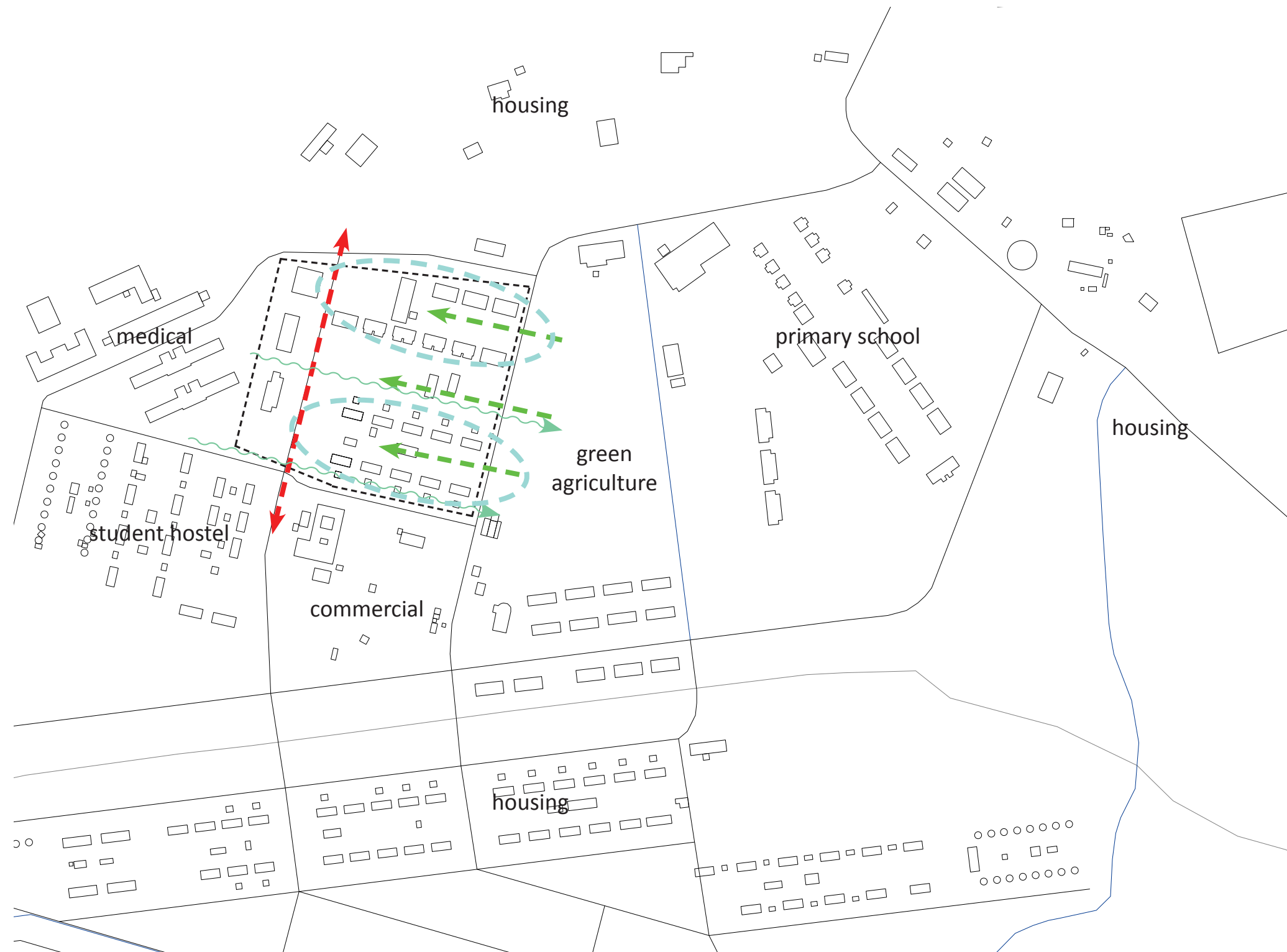
Two clusters and staff buildings



Location

Central location

Two clusters and staff buildings



Historical use

Behind the patient clusters where orchards which served for daytime activity

The interiors were green gardens



Values

Preservation of the clusters as an urban structure

Maintain historical **orientation**

Free the **interior courts** to better emphasise the seclusion of the patients



Opportunities

Strengthen the **main axis** by adding structure

Utilize the different **open spaces** and highlight their identities

Building in between the two clusters will **reduce the wastespace**

Fill the gap that exists by adding a building overlooking the 'coloured' cluster



Educational spaces

- * 15-20 classrooms (60sm)
(classrooms of 30-40 students)
- * 2 computer rooms (80sm)
- * media centre (80sm)
- * library
- * 2 multipurpose classrooms
- * 2 science laboratories (80sm)
- * social science room (80sm)
- * 2 agriculture classrooms (120sm)
- * 2 arts classrooms (120sm)

Administrative rooms

- * 15 offices (15-20sm)
- * reception area (20sm)
- * 3 services rooms (15sm)
- * staff room (60sm)
- * 3 rooms pastoral care (15sm)

Additional educational spaces

- * food garden (increased size)
- * dining room (120sm)
- * kitchen (20sm)
- * food storage (15sm)
- * general purpose room (auditorium) (180sm)
- * sport facilities
 - for soccer/rugby
 - for volleybal
- * 2 services rooms (25sm)
- * caretaker and security room (20sm)

- * 26 toilets

Student hostel
100-150 students





Strengthening the main axis

The Open-air auditorium is situated along the main entrance axis



Strengthening the main axis

The Open-air auditorium is situated along the main entrance axis

A shaded walkway allows for a dry and cool passage to and from the auditorium

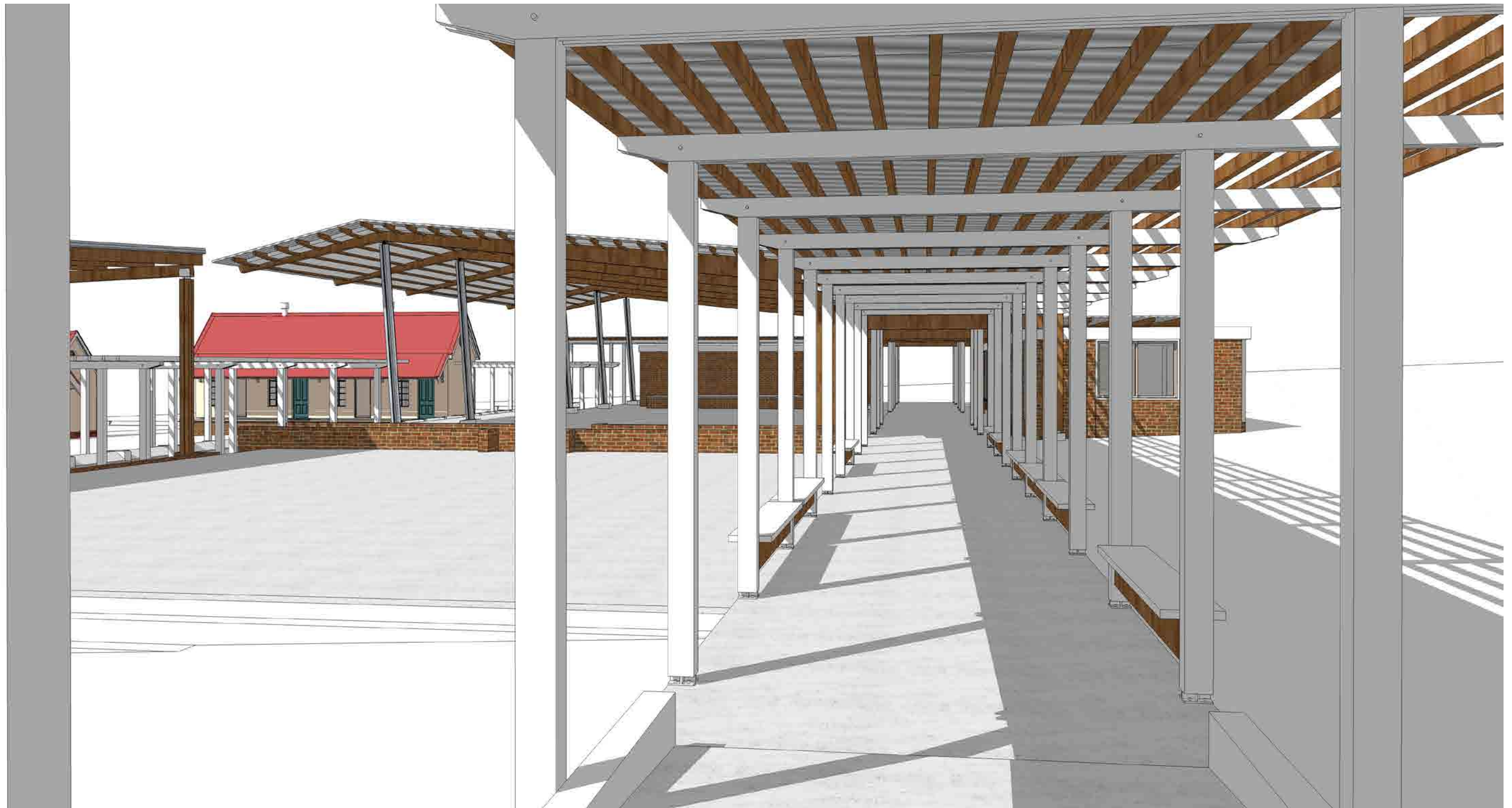


Strengthening the main axis

The Open-air auditorium is situated along the main entrance axis

Shaded benches make the walkway a lively passage

A shaded walkway allows for a dry and cool passage to and from the auditorium

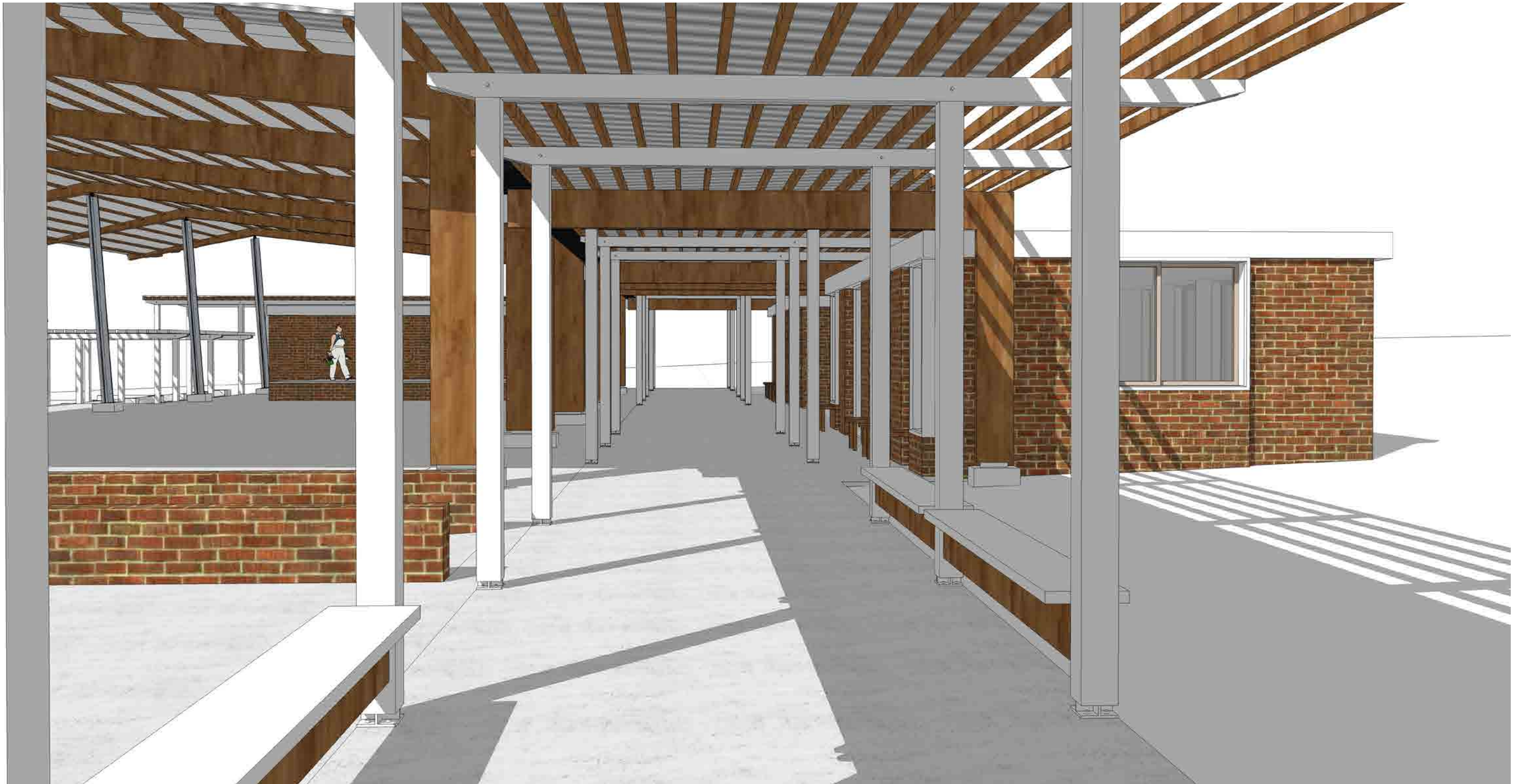


Strengthening the main axis

The Open-air auditorium is situated along the main entrance axis

Shaded benches make the walkway a lively passage

A shaded walkway allows for a dry and cool passage to and from the auditorium



Open-air Auditorium

Opening to the patient cluster



Open-air Auditorium

Opening to the patient cluster

Large open structure

A secondary walkway connects the Open-air auditorium with the two classroom wings



Open-air Auditorium

Opening to the patient cluster

Large open structure

A secondary walkway connects the Open-air auditorium with the two classroom wings

Gradual transition between the auditorium and the heritage opposing it



Looking at the past

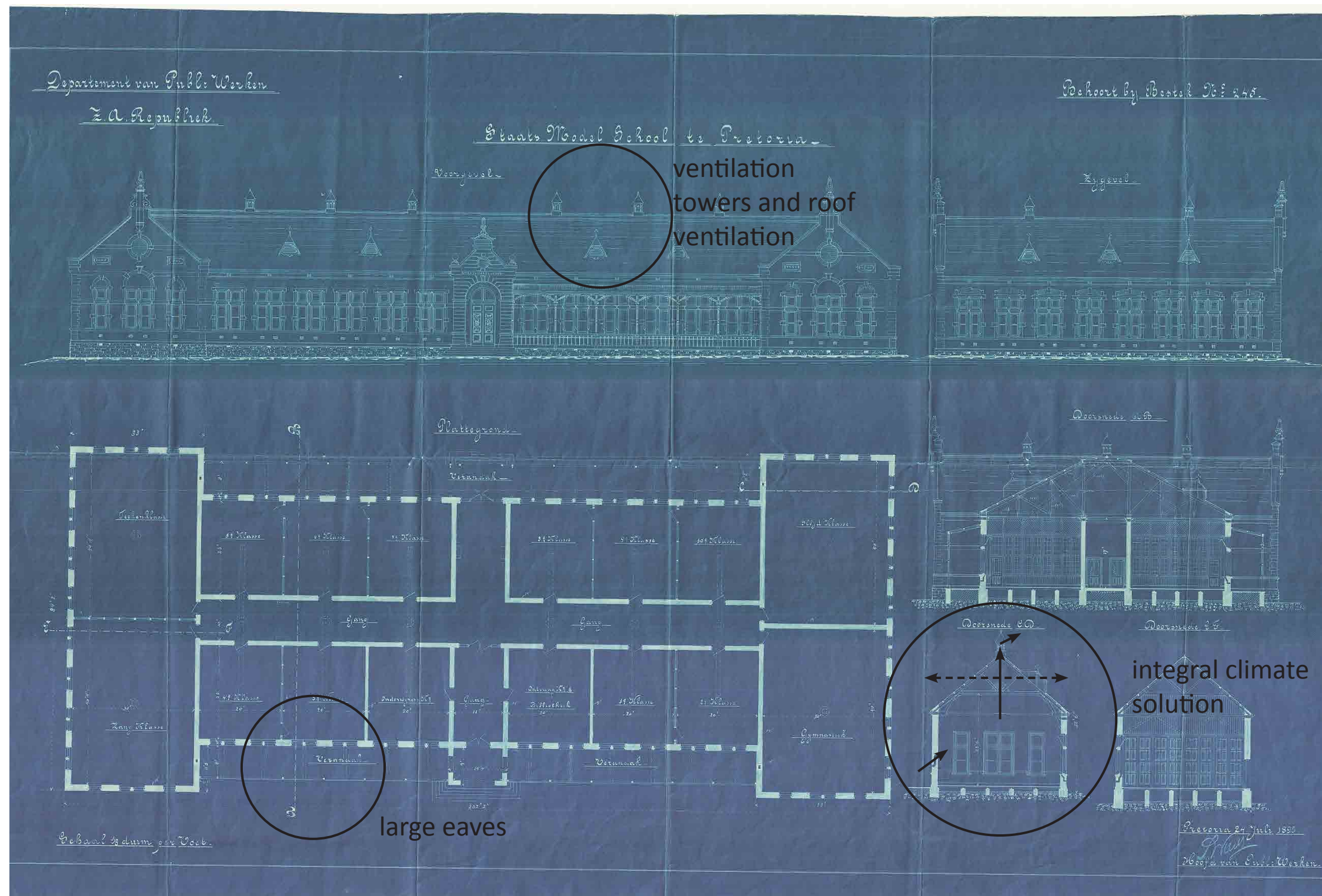
Buildings designed by Sytze Wierda



Looking at the past

Buildings designed by Sytze Wierda

Wierda acknowledged the importance of architectural measures to improve the interior climate



Looking at the past

Buildings designed by Sytze Wierda

Smart passive strategies were used

Wierda acknowledged the importance of architectural measures to improve the interior climate



Looking at the past

Buildings designed by Sytze Wierda

Smart passive strategies were used

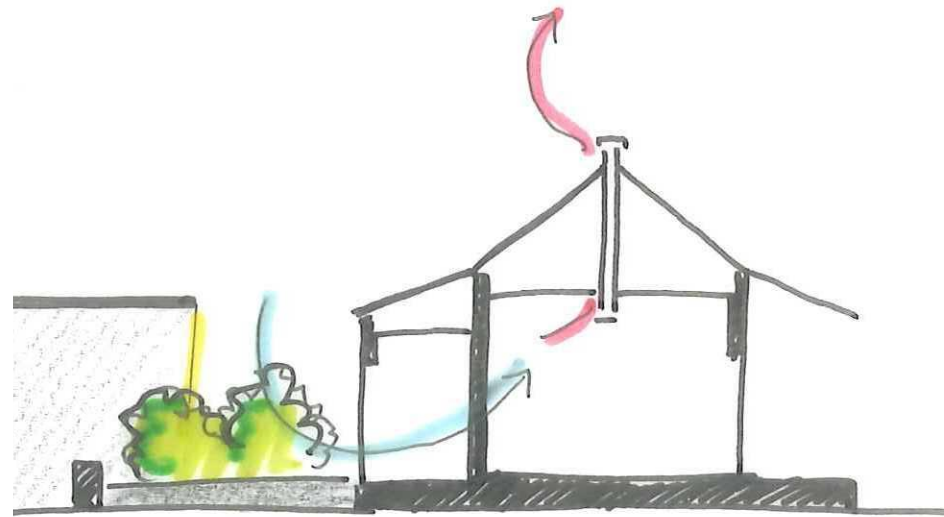
Wierda acknowledged the importance of architectural measures to improve the interior climate

A healthy environment was considered very important to reduce contamination



Improve quality of the patient houses

Improve ventilation of the houses



Improve quality of the patient houses

Improve ventilation of the houses

Make the backside more attractive since it will become more representative



Improve quality of the patient houses

Improve ventilation of the houses

Open the interiors to show the respective functions

Make the backside more attractive since it will become more representative

Introduce green spaces



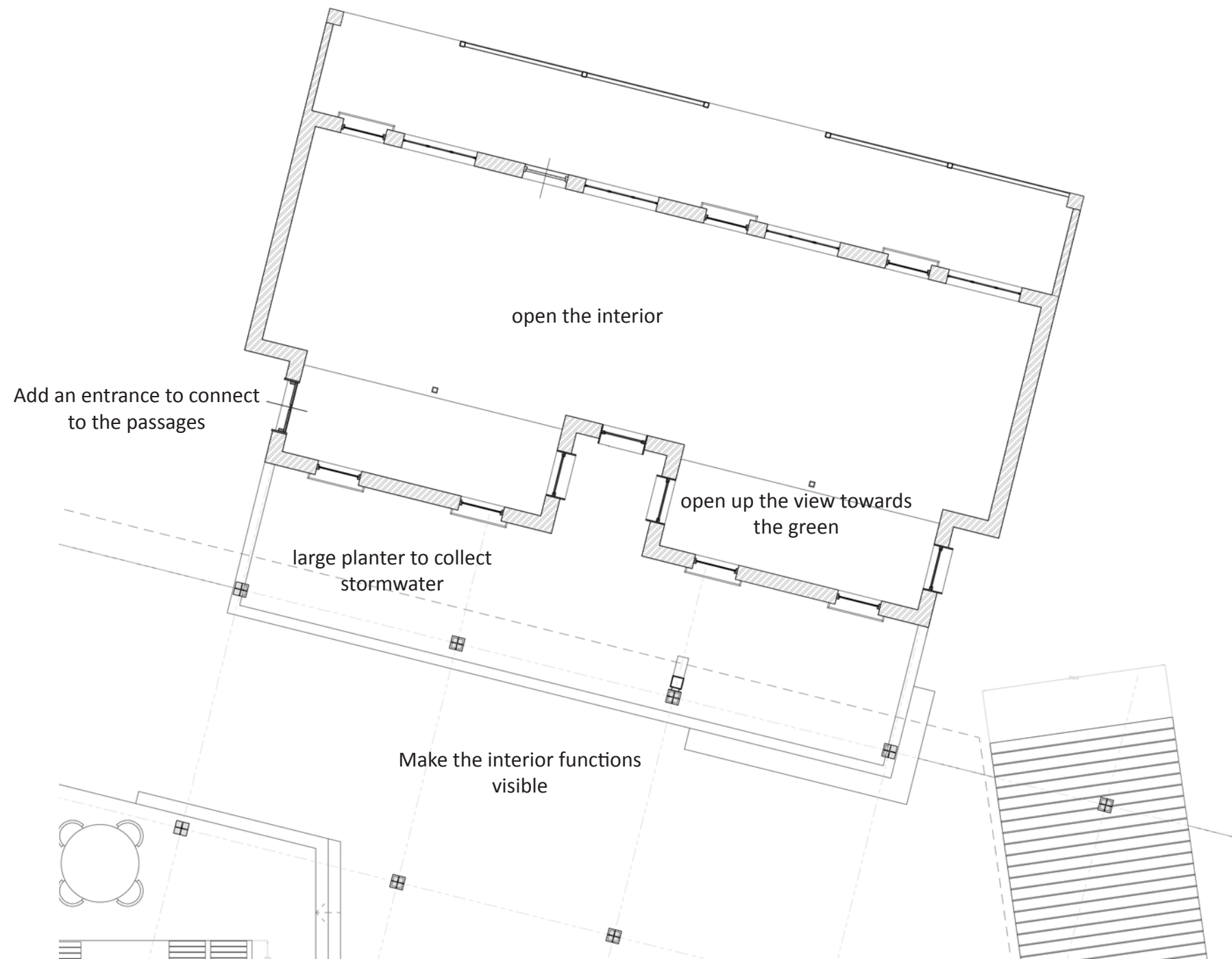
Improve quality of the patient houses

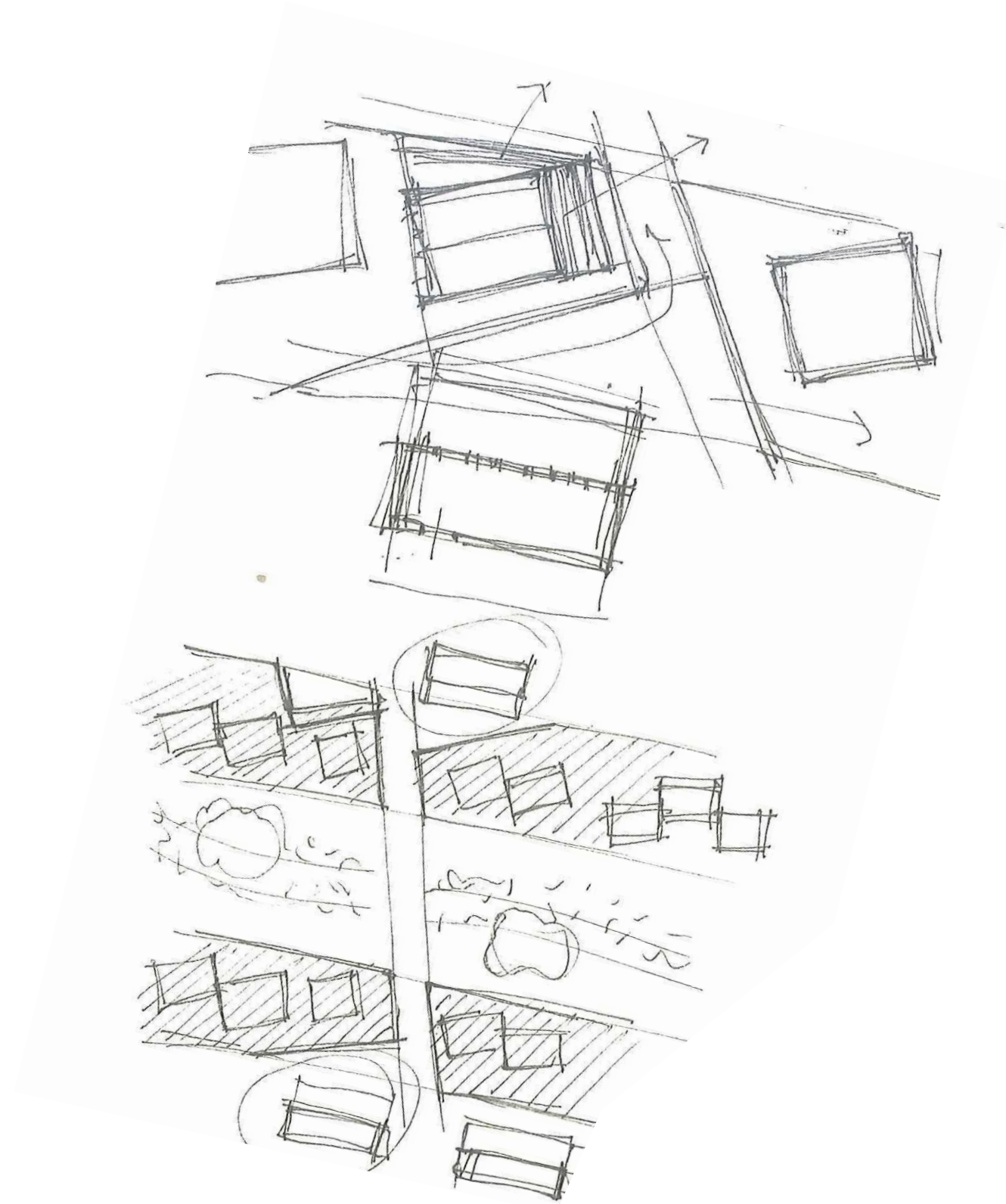
Improve ventilation of the houses

Open the interiors to show the respective functions

Make the backside more attractive since it will become more representative

Introduce green spaces





Classroom wings

Sustainable buildings in a green study landscape



Classroom wings

Sustainable buildings in a green study landscape

Reused bricks and a wooden construction give it a natural look that fits the landscape



Classroom wings

Sustainable buildings in a green study landscape

Reused bricks and a wooden construction give it a natural look that fits the landscape

Large eaves provide shade



Classroom wings

Sustainable buildings in a green study landscape

Reused bricks and a wooden construction give it a natural look that fits the landscape

Large eaves provide shade

Backsides of the old houses are now attractive spaces

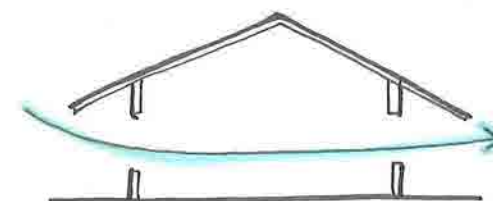
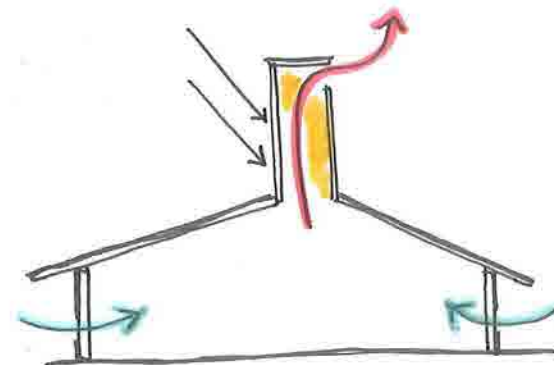
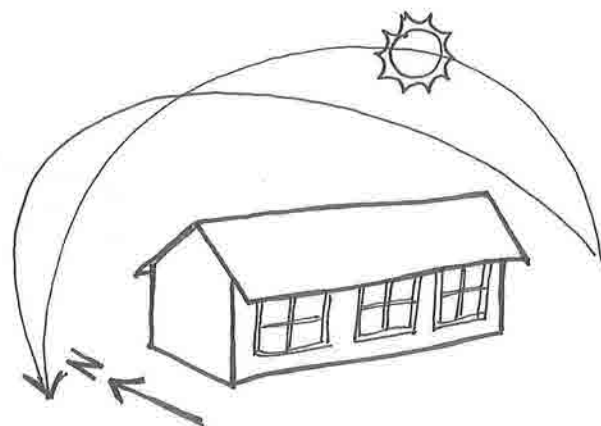
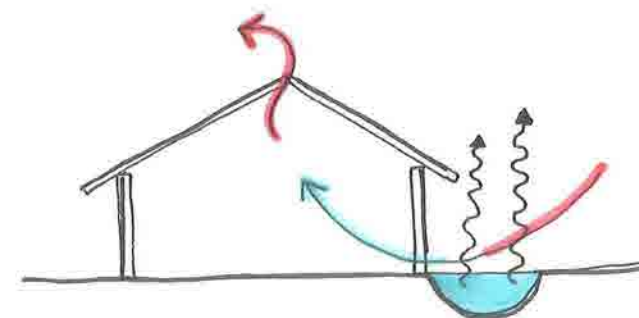
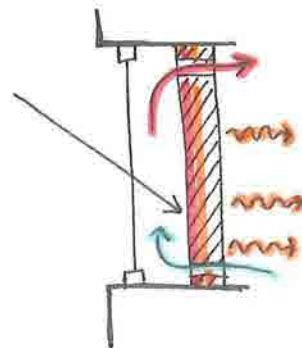
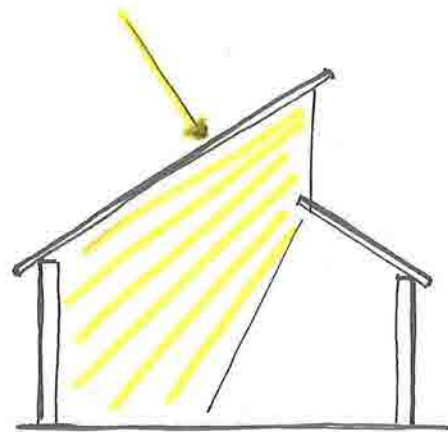
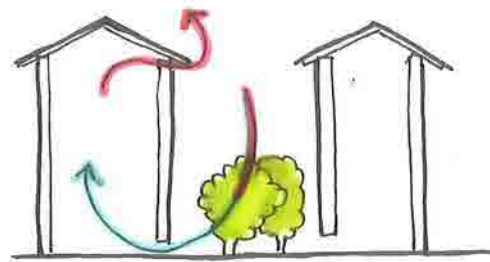
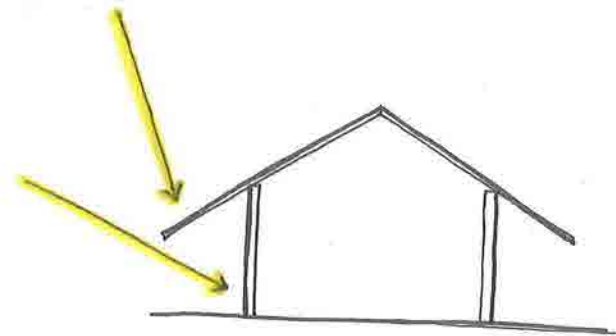


Classroom wings

Sustainable buildings in a green study landscape

Reused bricks and a wooden construction give it a natural look that fits the landscape

Large eaves provide shade



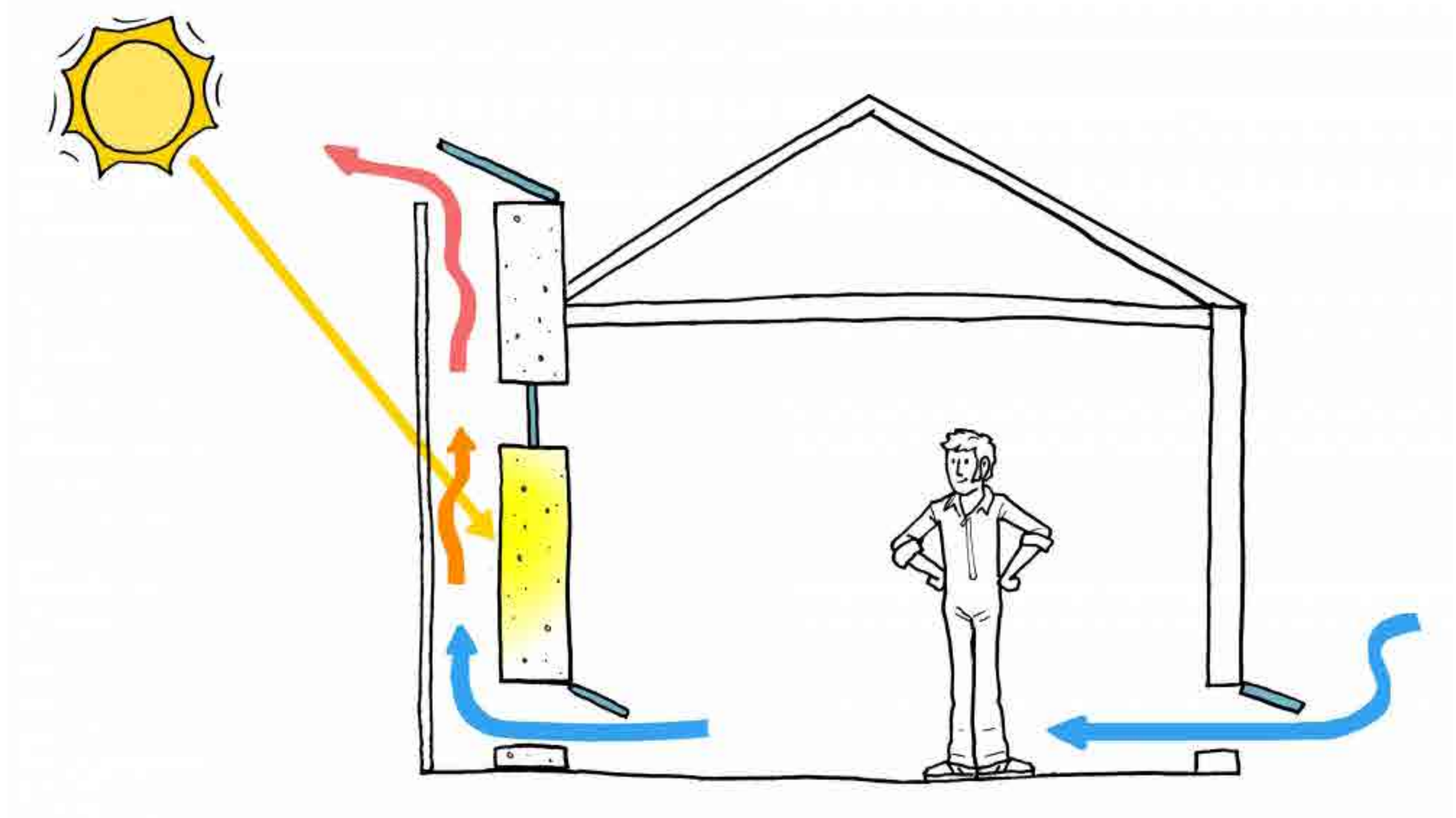
Classroom wings

Sustainable buildings in a green study landscape

Reused bricks and a wooden construction give it a natural look that fits the landscape

Large eaves provide shade

Backsides of the old houses are now attractive spaces
Sustainable ventilation technology



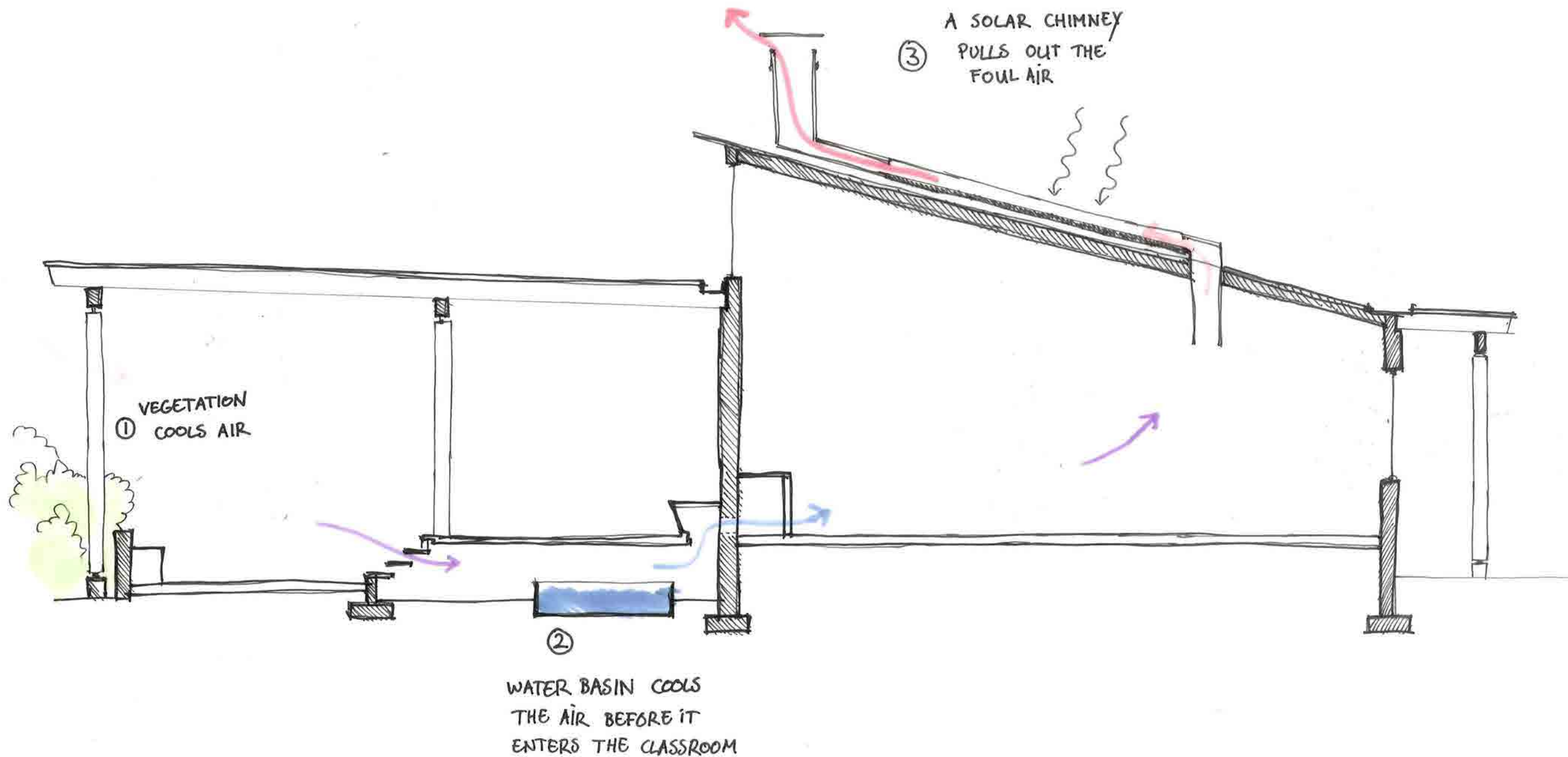
Classroom wings

Sustainable buildings in a green study landscape

Reused bricks and a wooden construction give it a natural look that fits the landscape

Large eaves provide shade

Backsides of the old houses are now attractive spaces
Sustainable ventilation technology



Classroom wings

Sustainable buildings in a green study landscape

Reused bricks and a wooden construction give it a natural look that fits the landscape

Large eaves provide shade

Backsides of the old houses are now attractive spaces
Sustainable ventilation technology

One roof protects against rain and sun and benefits from the elements



Classroom wings

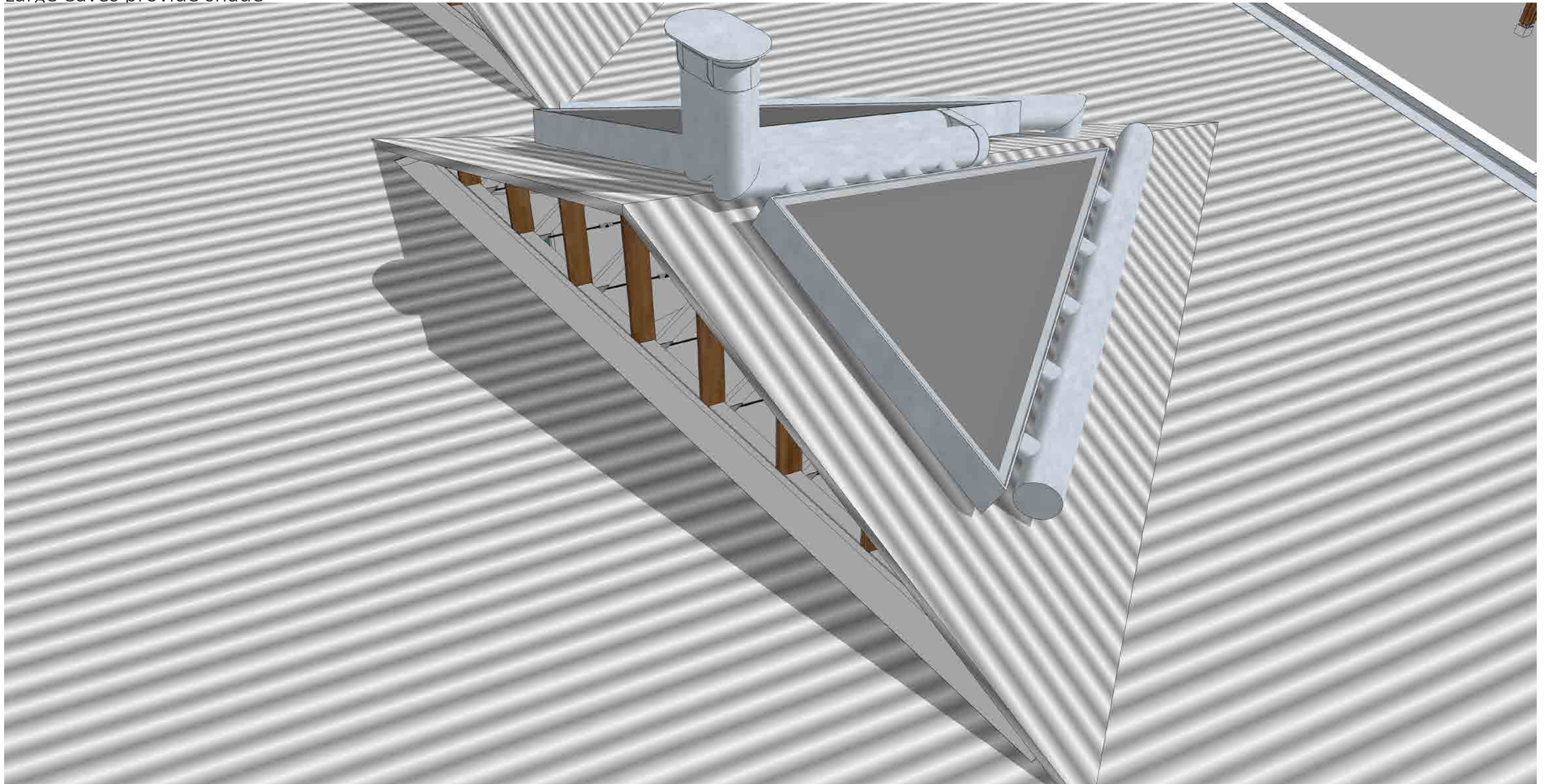
Sustainable buildings in a green study landscape

Reused bricks and a wooden construction give it a natural look that fits the landscape

Large eaves provide shade

Backsides of the old houses are now attractive spaces
Sustainable ventilation technology

One roof protects against rain and sun and benefits from the elements



Classroom wings

Sustainable buildings in a green study landscape

Reused bricks and a wooden construction give it a natural look that fits the landscape

Large eaves provide shade

Backsides of the old houses are now attractive spaces
Sustainable ventilation technology

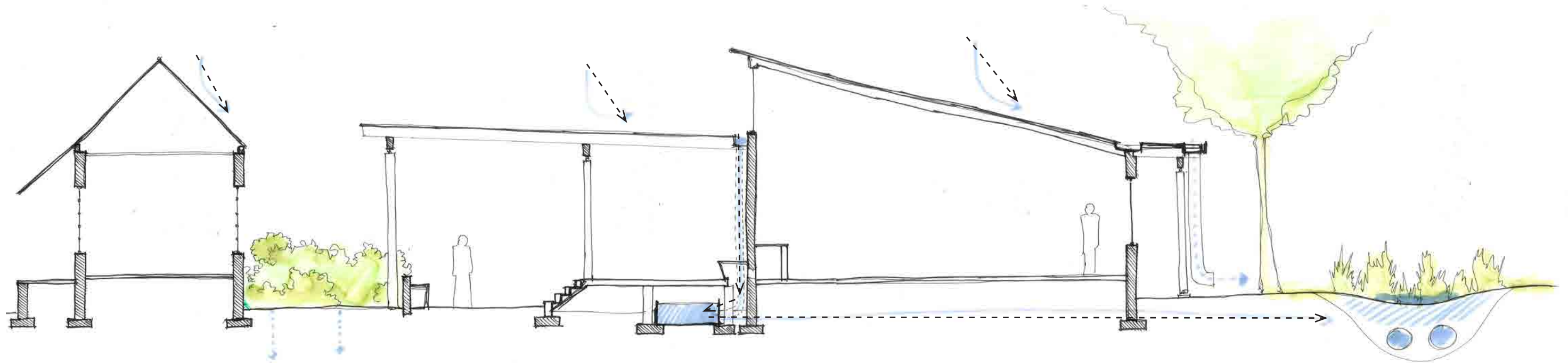
One roof protects against rain and sun and benefits from the elements



Water management

Storm water is guided to the bioswale

Water is used to cool the ventilation air



Water management

Storm water is guided to the bioswale

Water is used to cool the ventilation air

The water system is a central part of the design and forms a barrier between the classroom wings



Conclusion

The Healthy School will be a valuable addition for Westfort's future



Thank you for listening