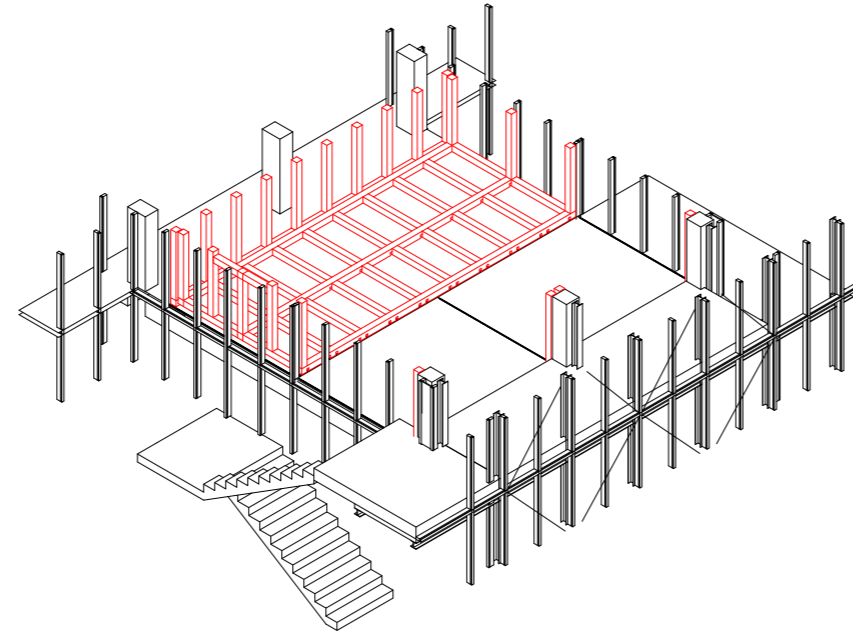
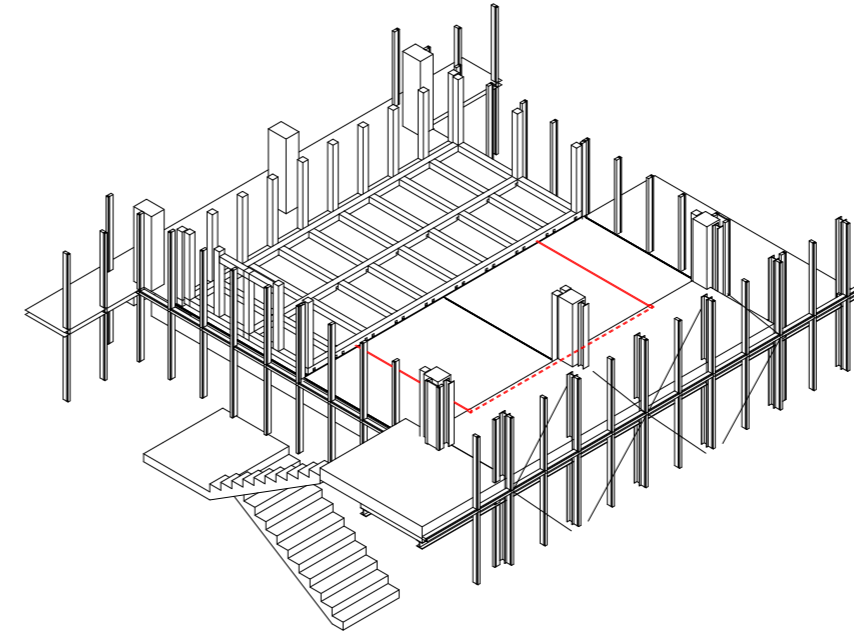


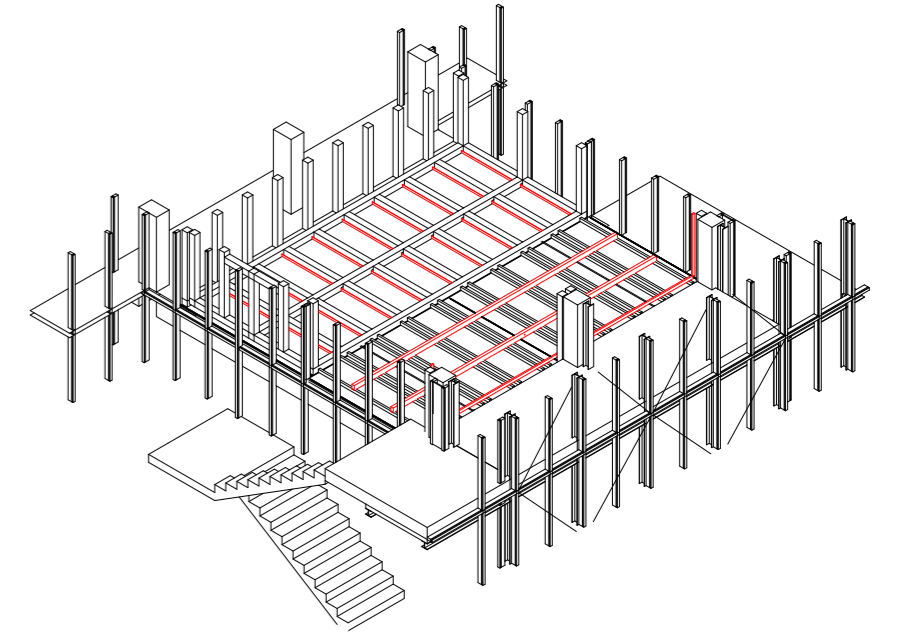
status quo



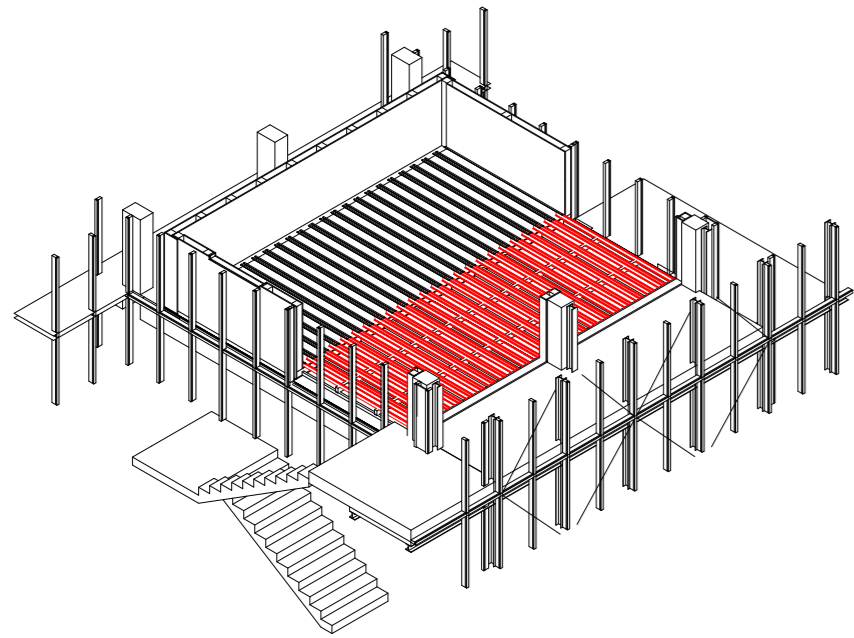
structural timber frames



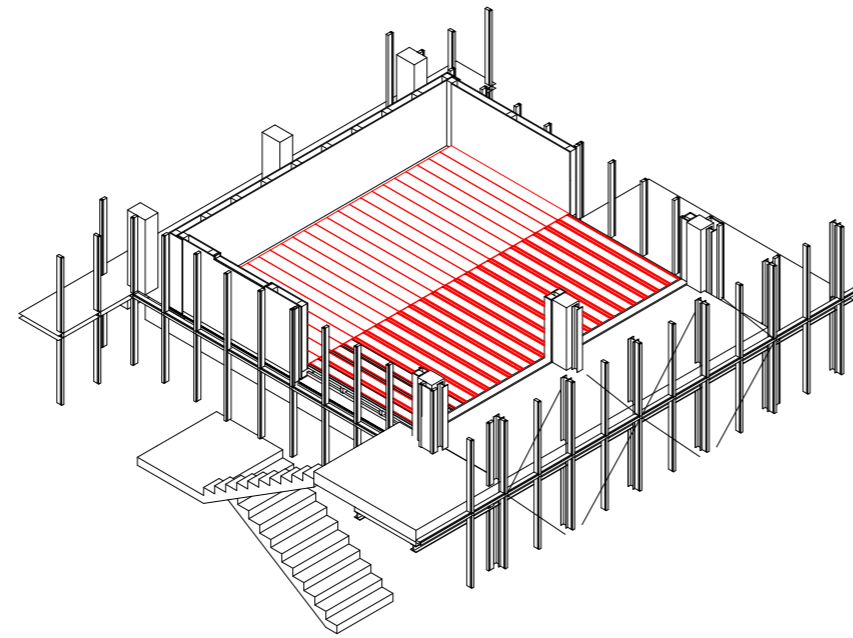
movement via linear actuation



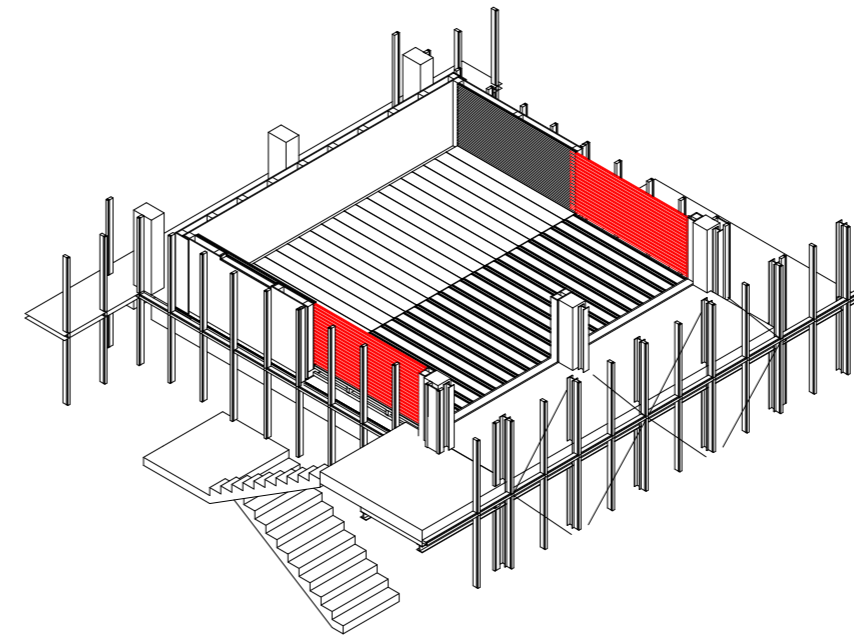
support for the flooring



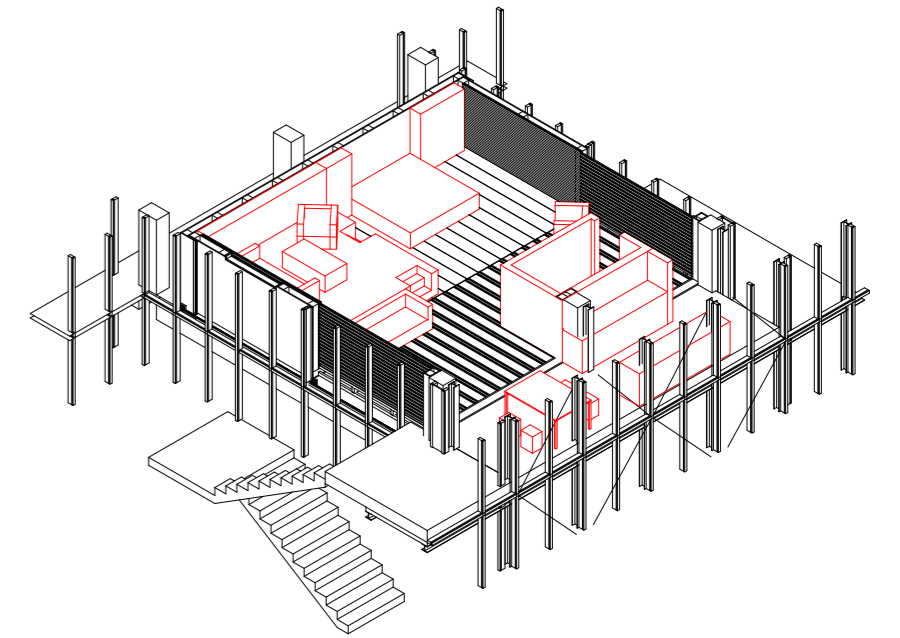
alternating lower flooring



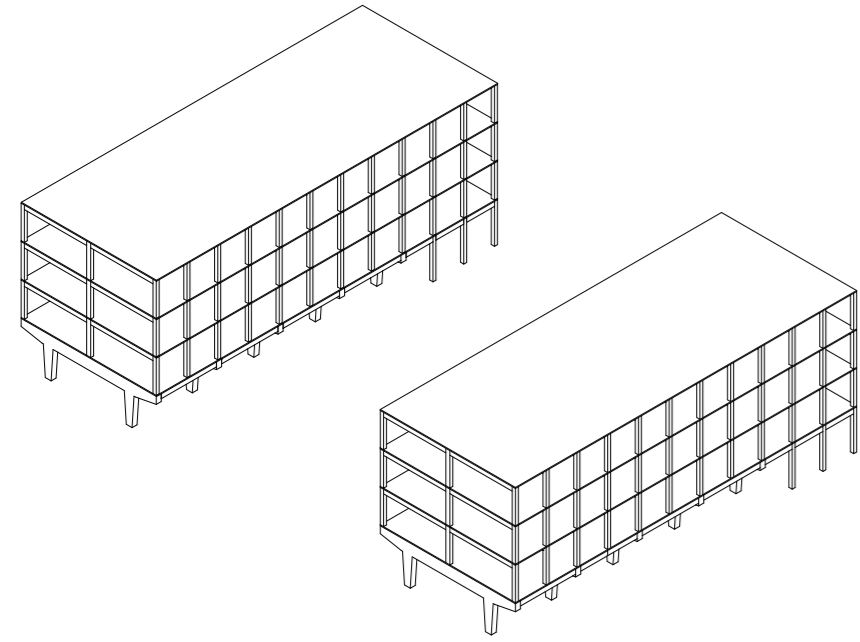
floor finishing



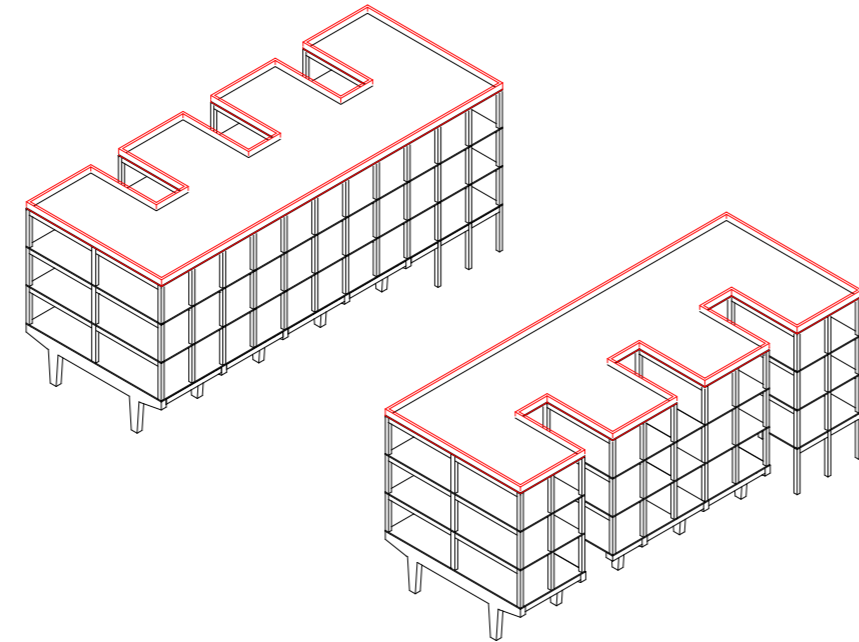
movement via linear actuation



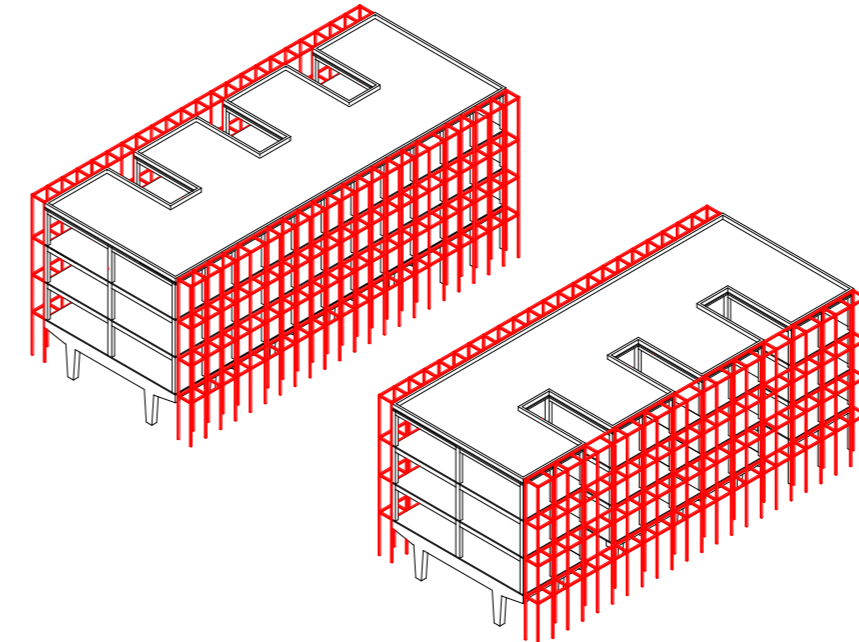
light and modifiable furniture



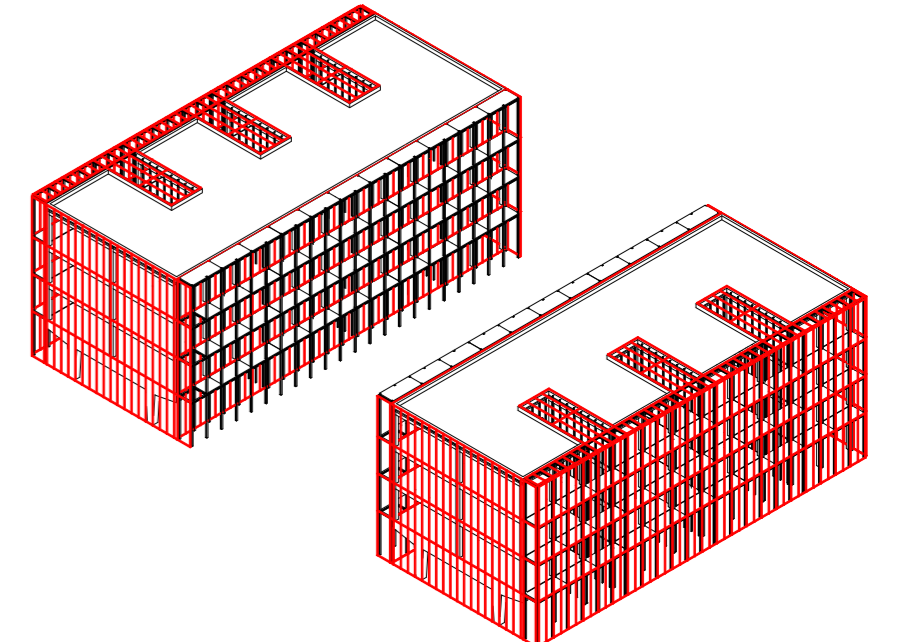
status quo



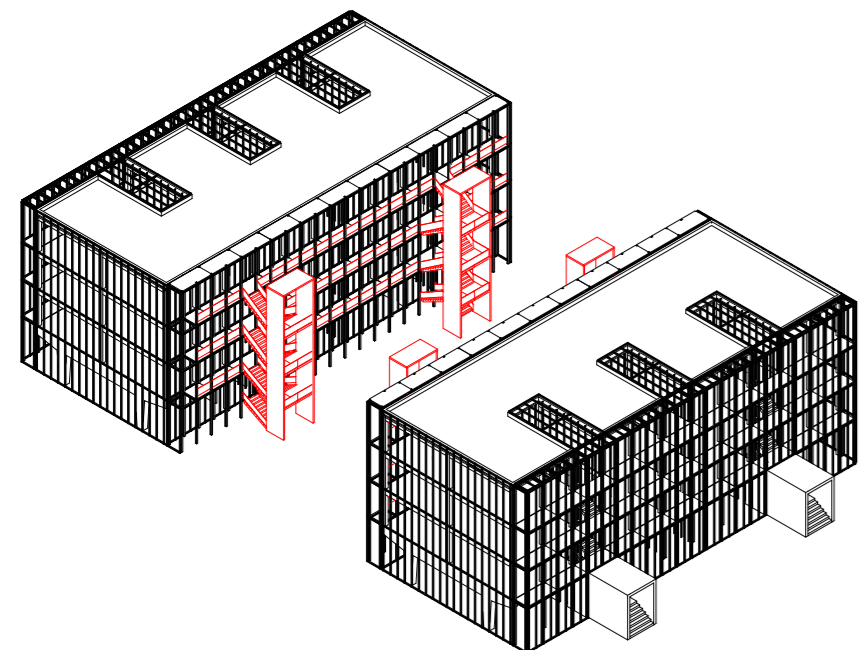
incision of 6 cores



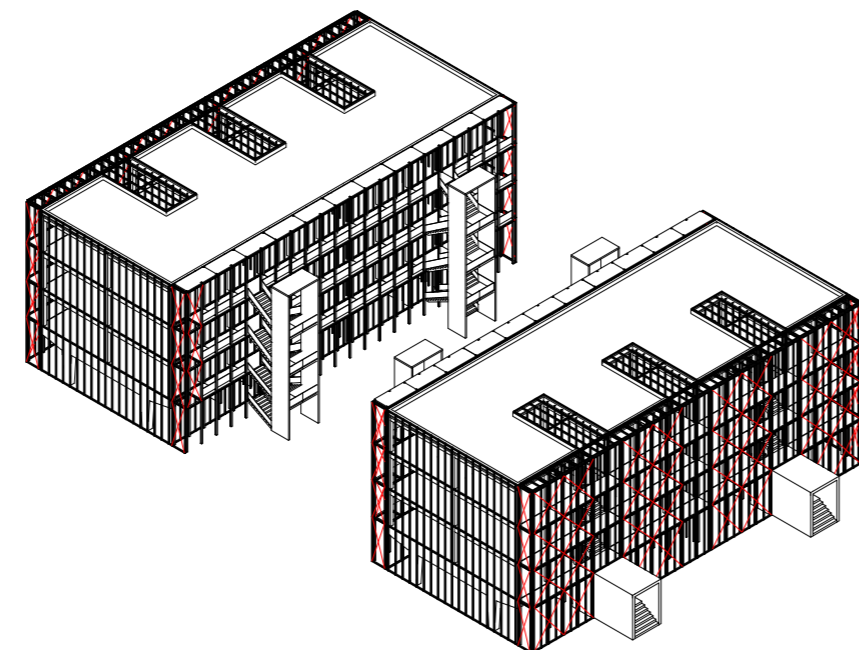
implementation of stiff circulation



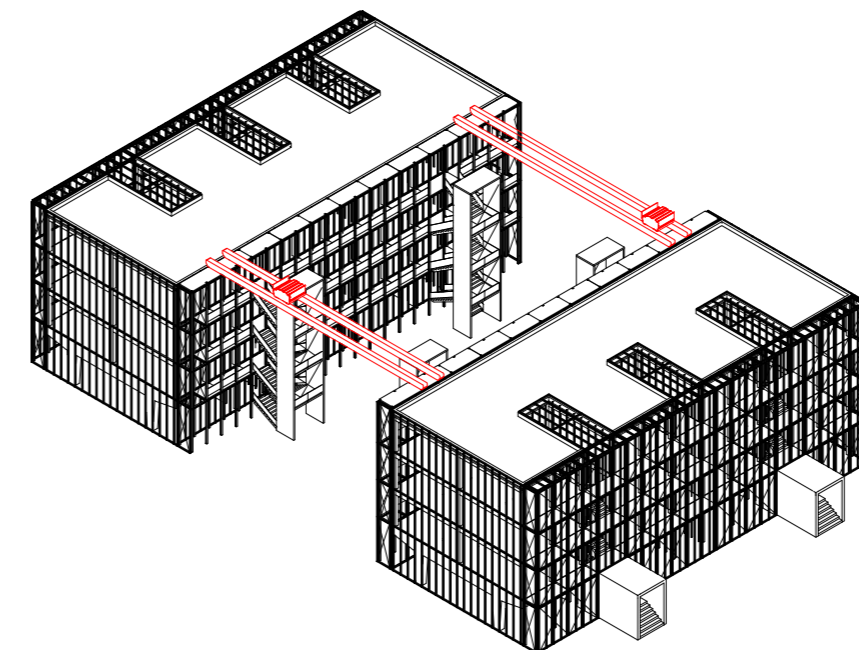
curtain walls as building envelope



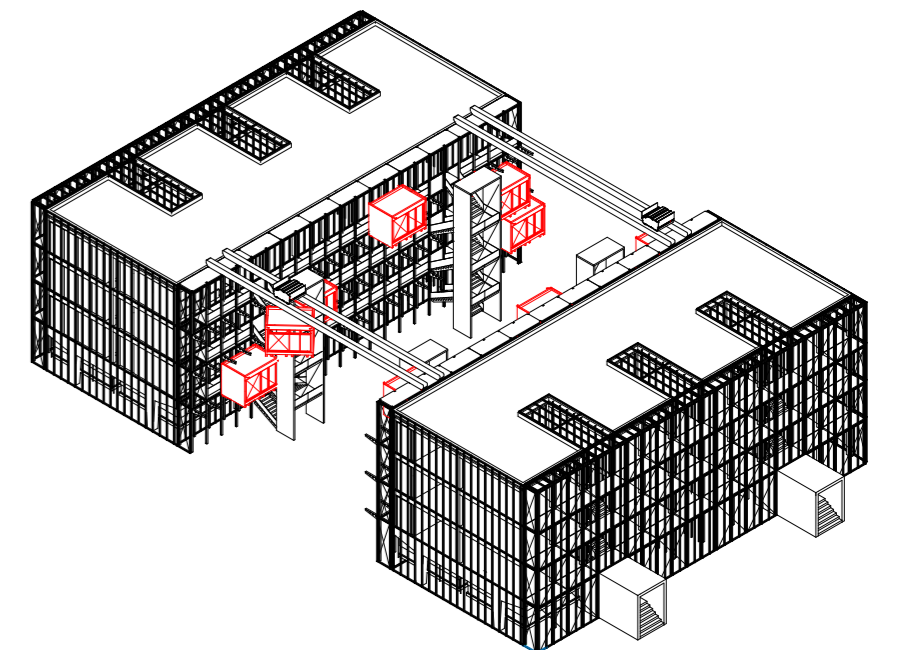
display of circulation towards the interior



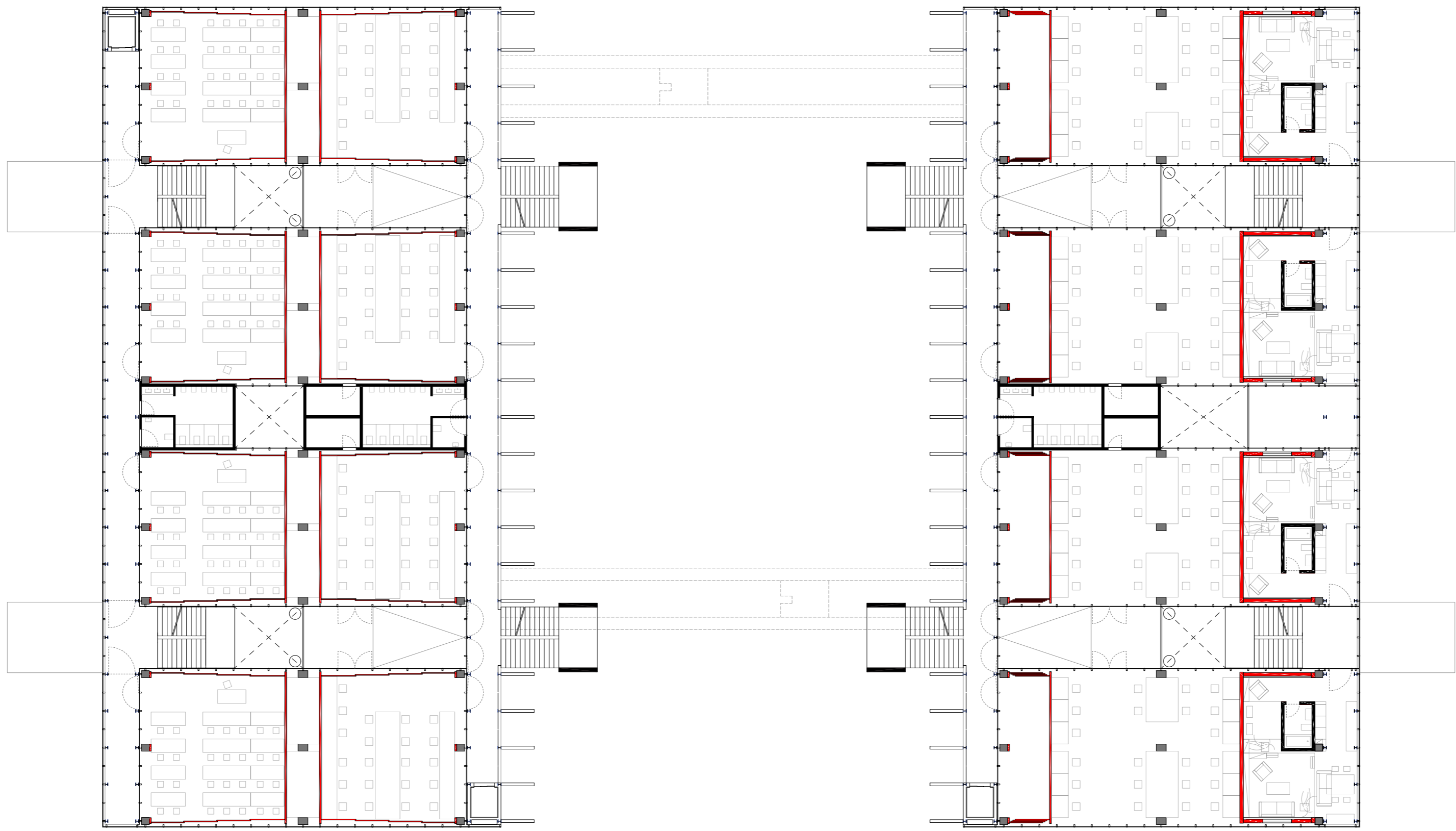
bracing for horizontal stability



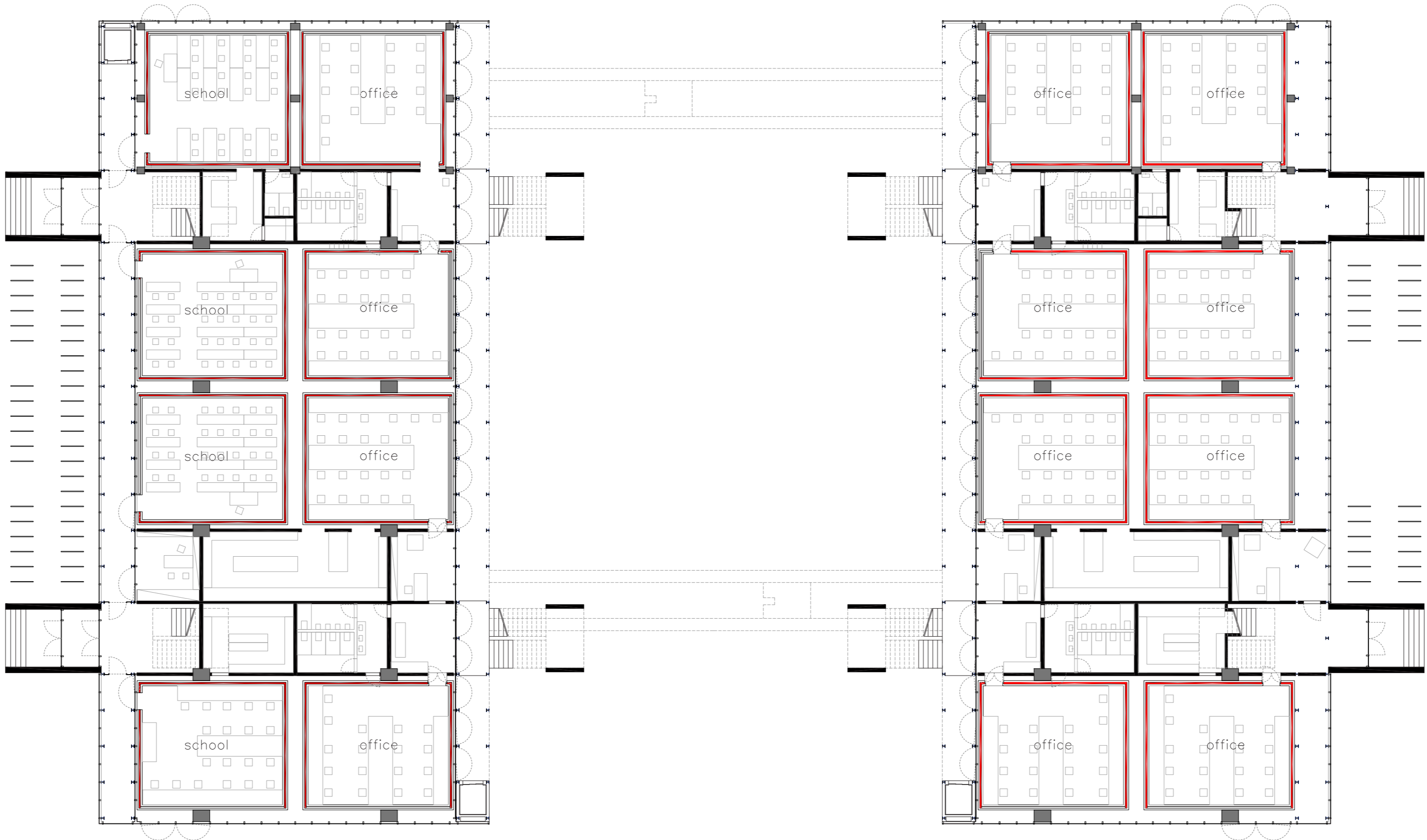
activation of the inner courtyard



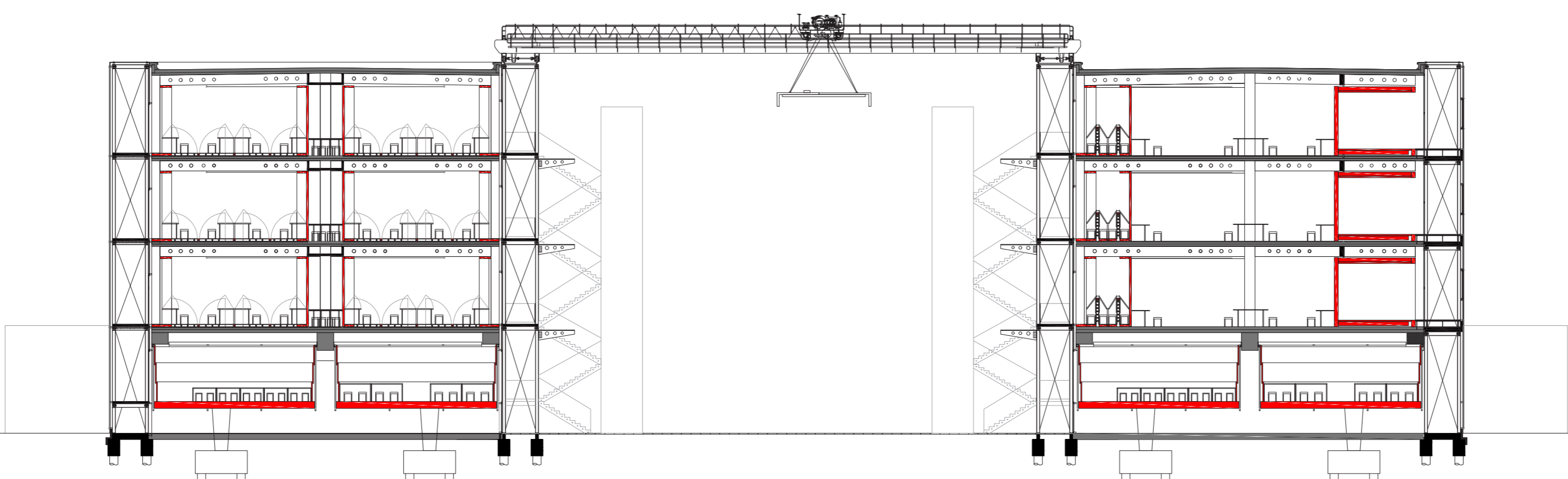
exhibition of kinetic nature of the building



TOP FLOOR

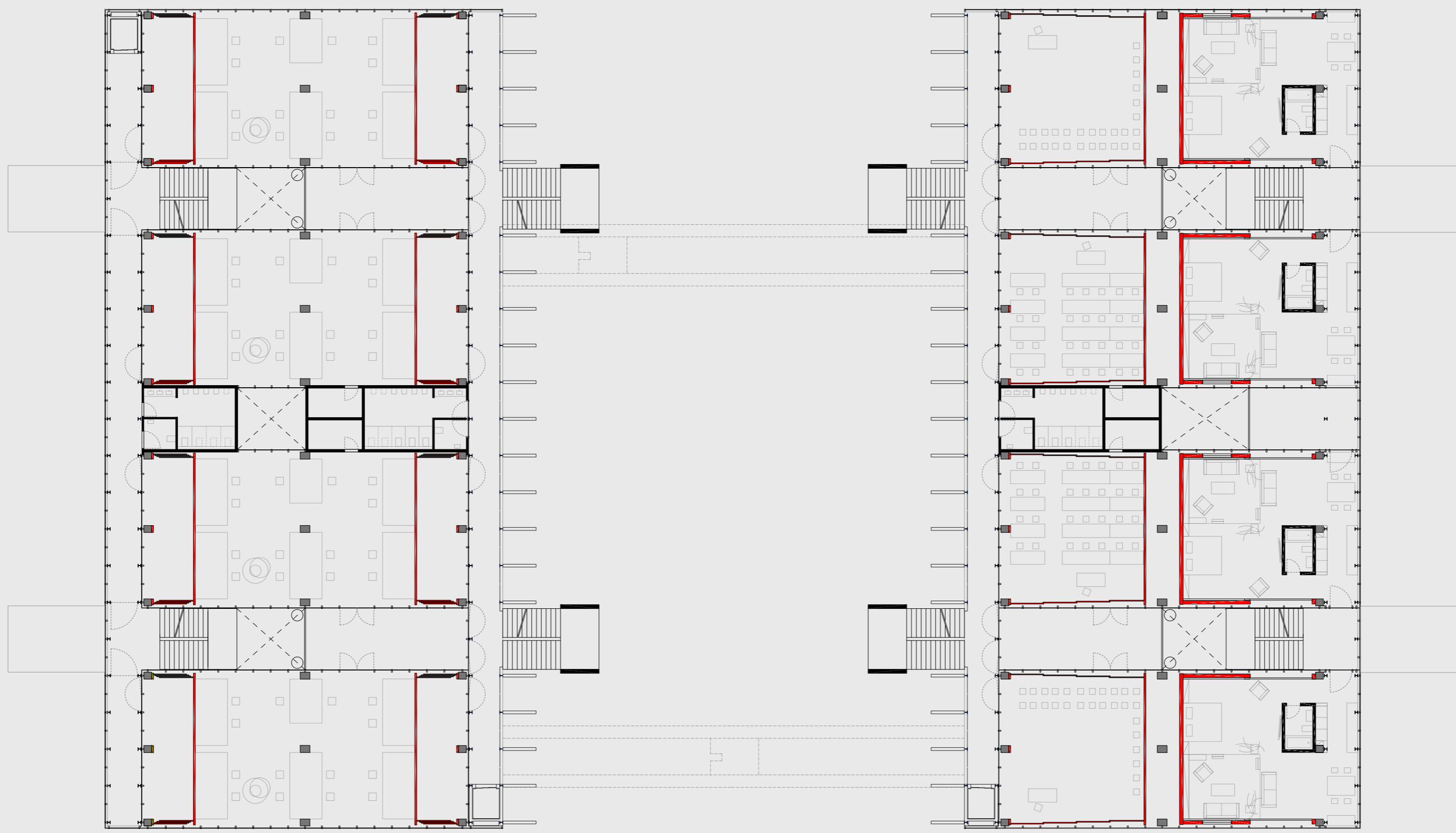


GROUND FLOOR

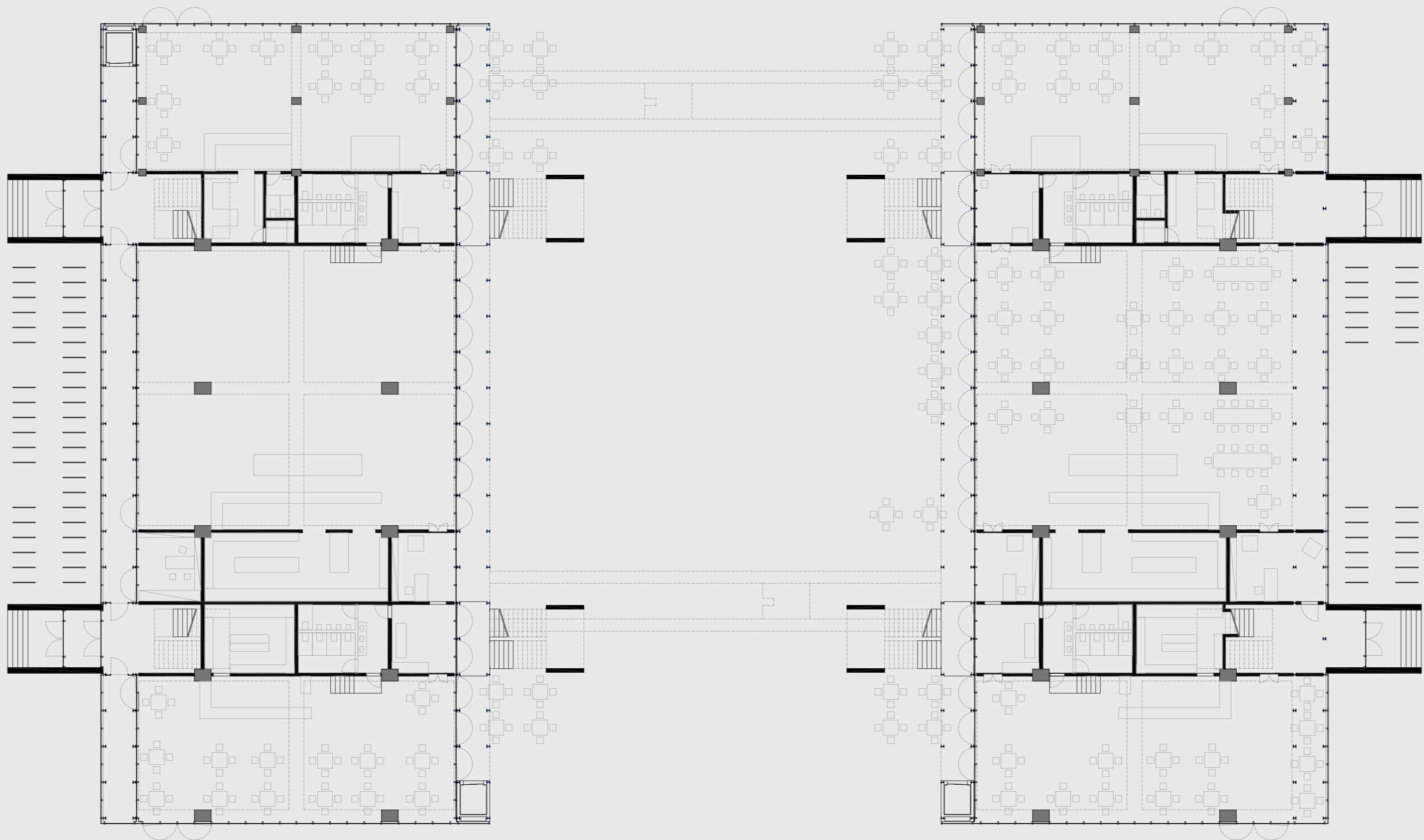


SECTION

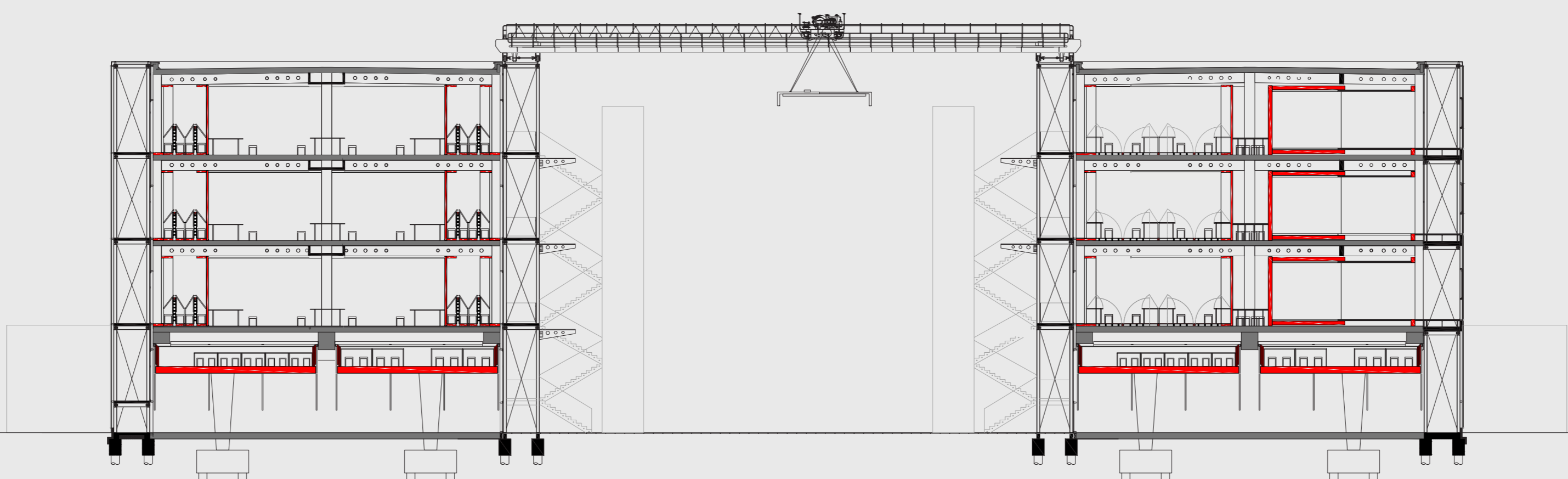
1:200



TOP FLOOR

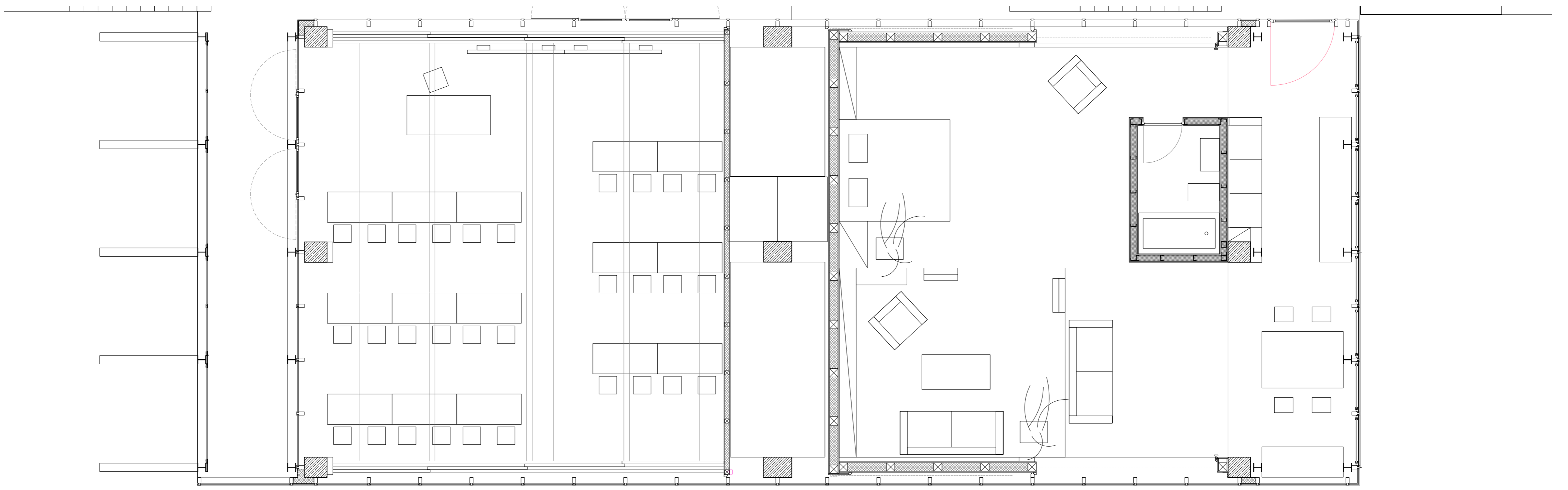


GROUND FLOOR

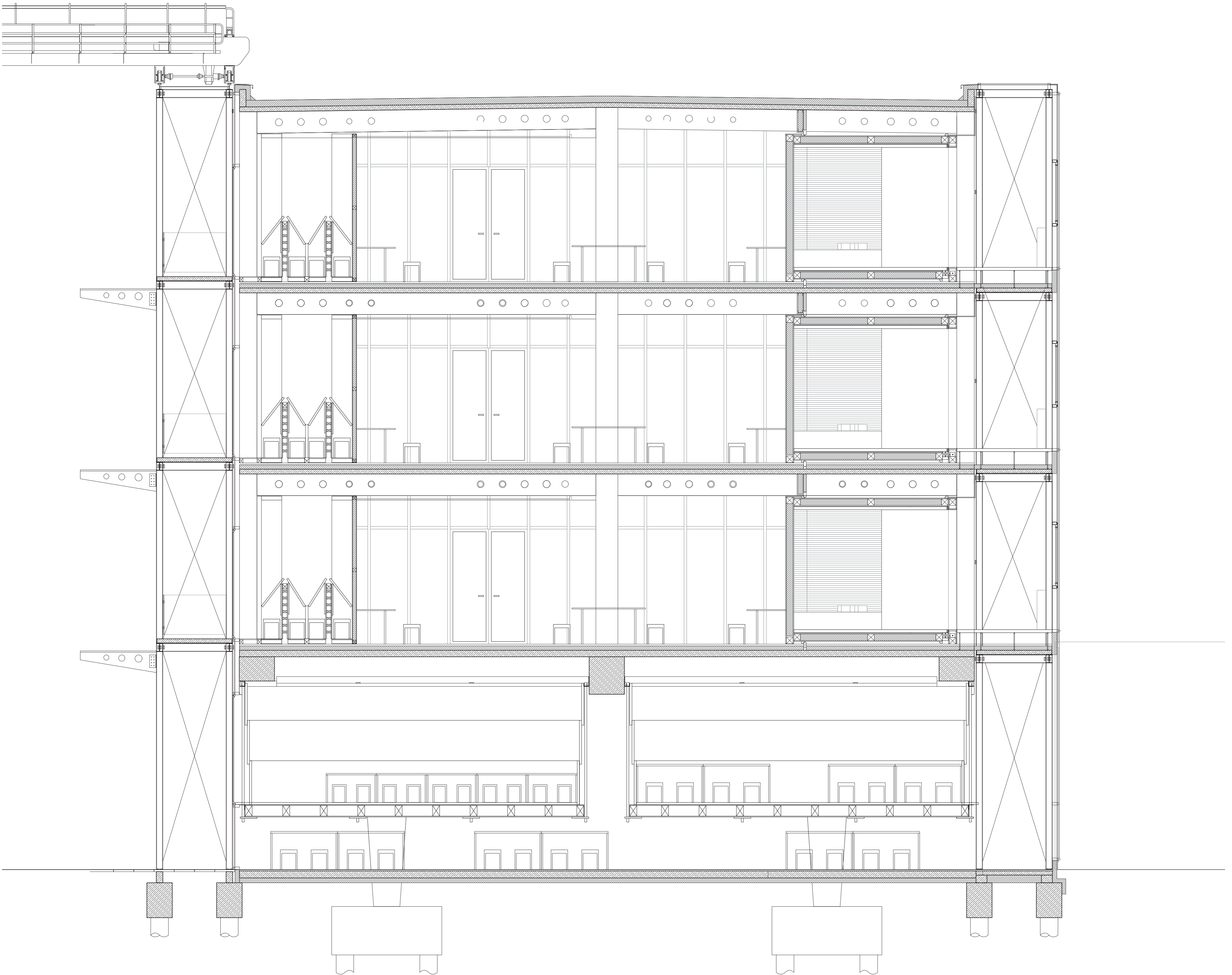


SECTION

1:200

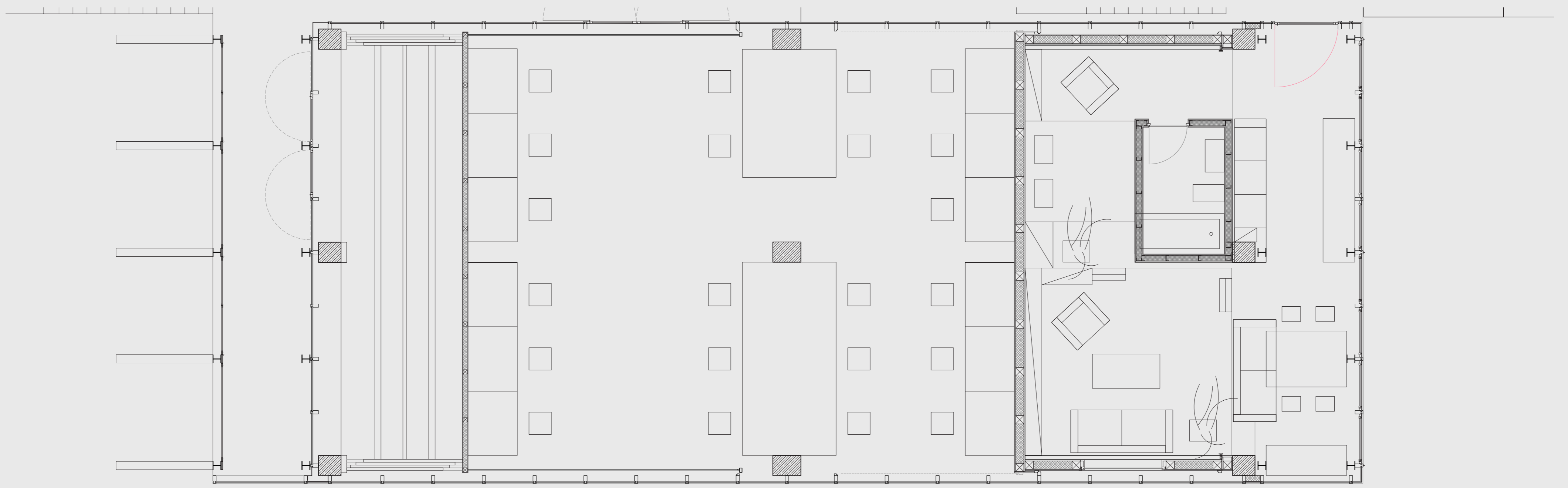


TOP FLOOR

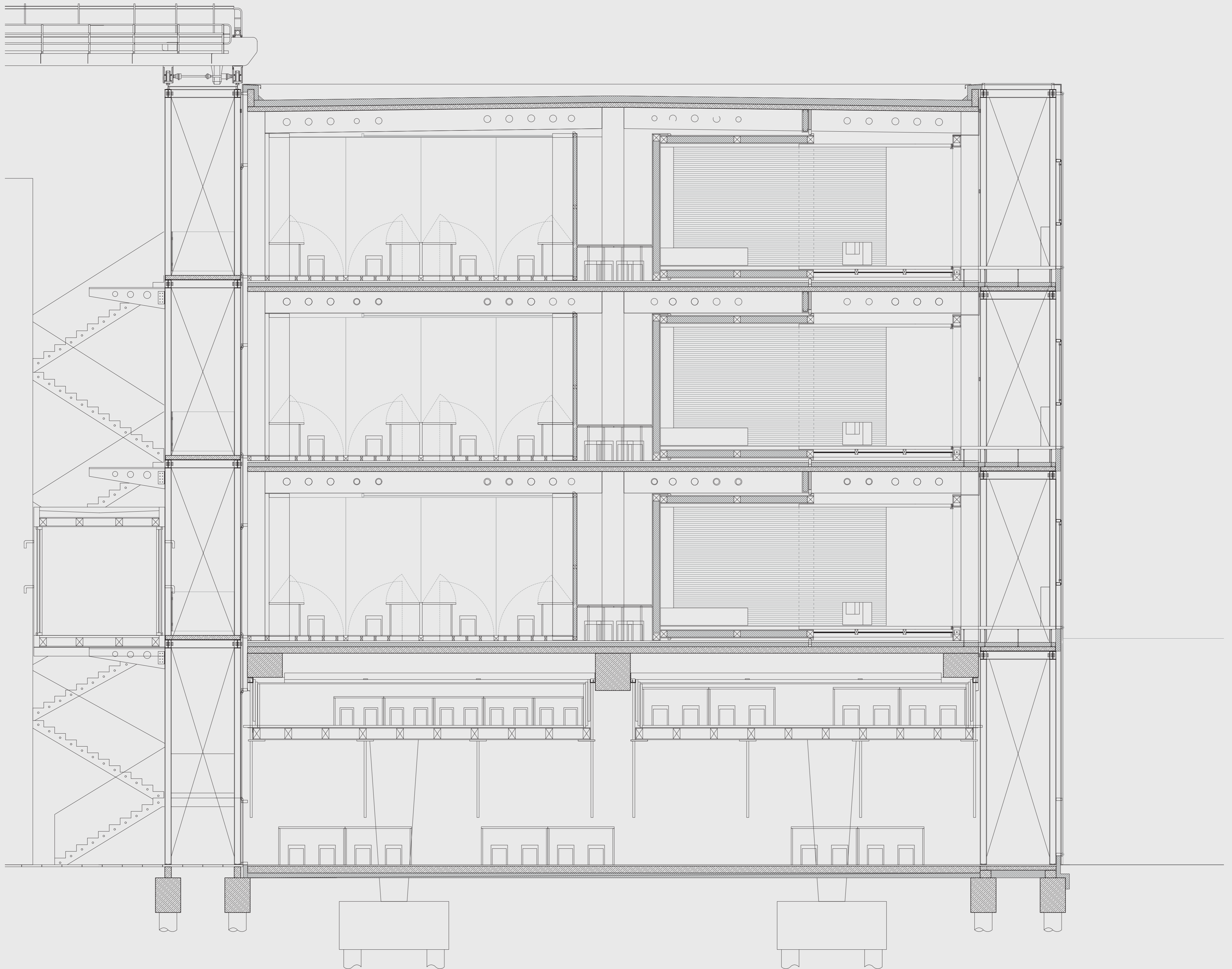


SECTION

1:50

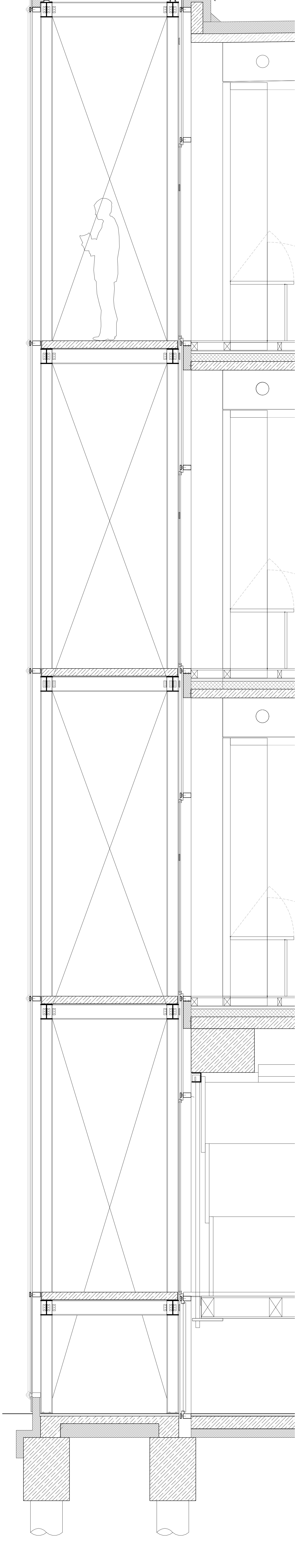


TOP FLOOR



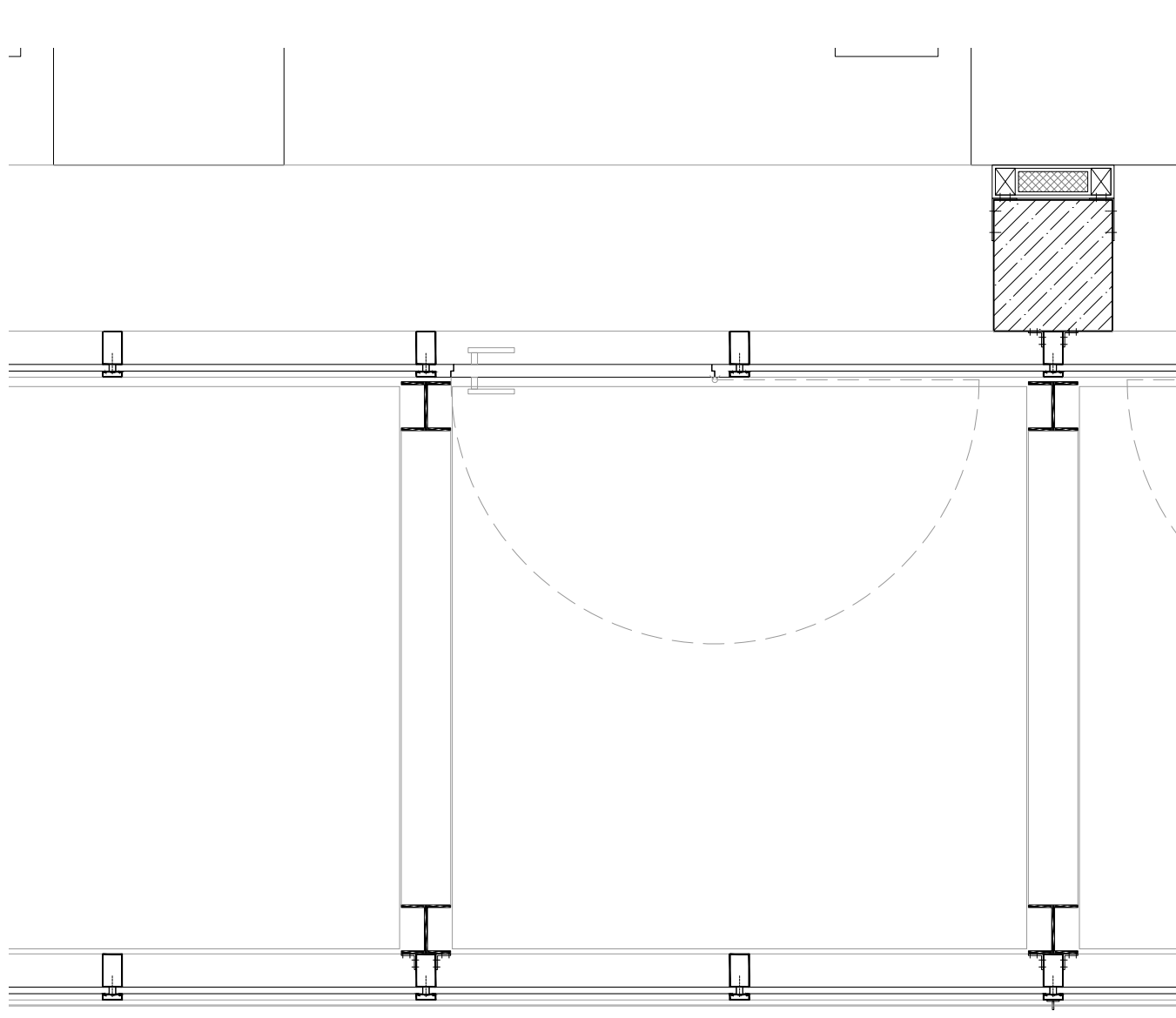
SECTION

1:50

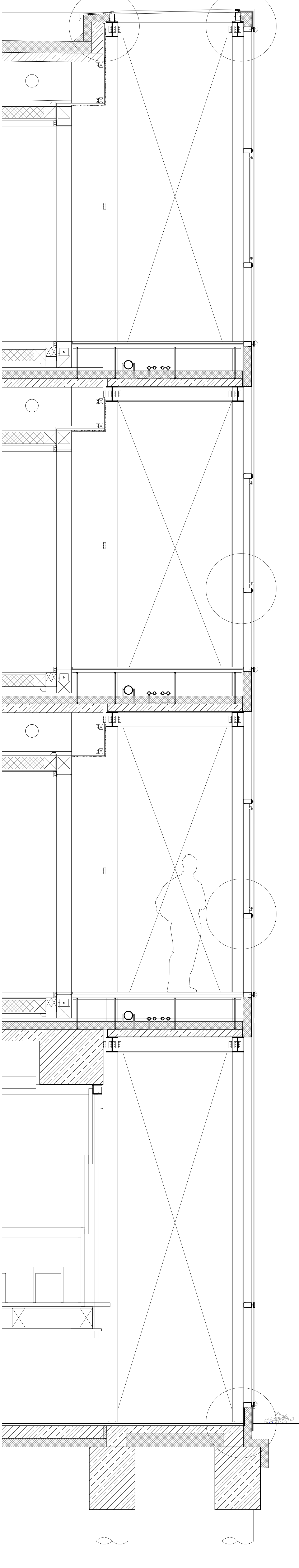




ELEVATION SCHOOL 1:20

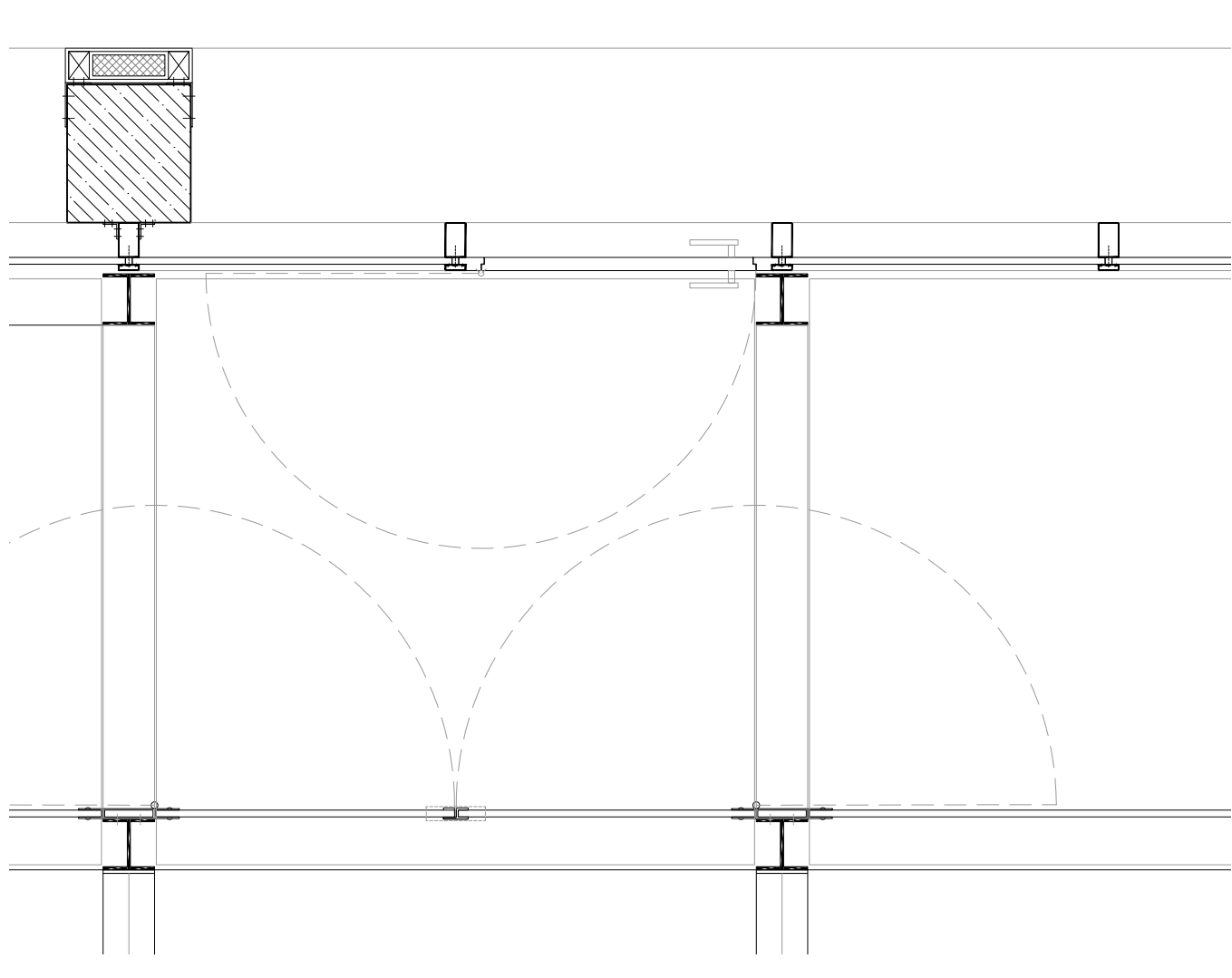


FACADE SEGMENT PLAN SCHOOL 1:20

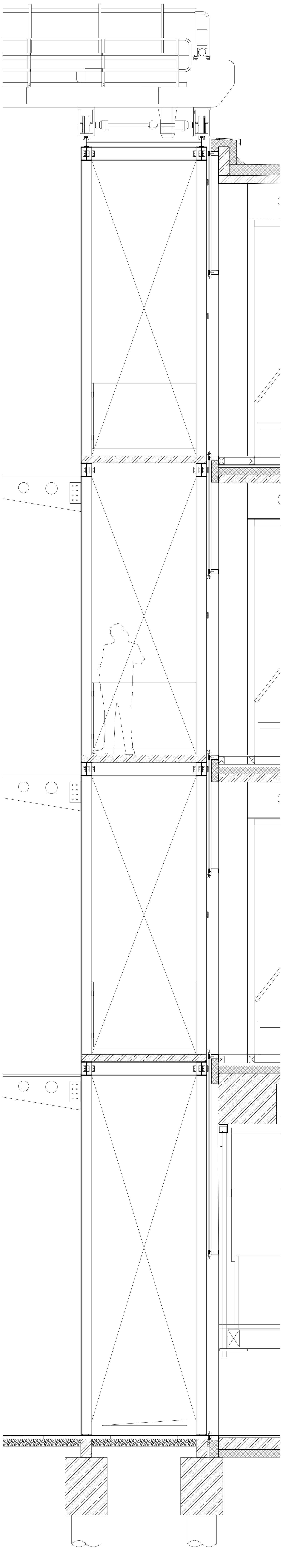




ELEVATION SCHOOL 1:20

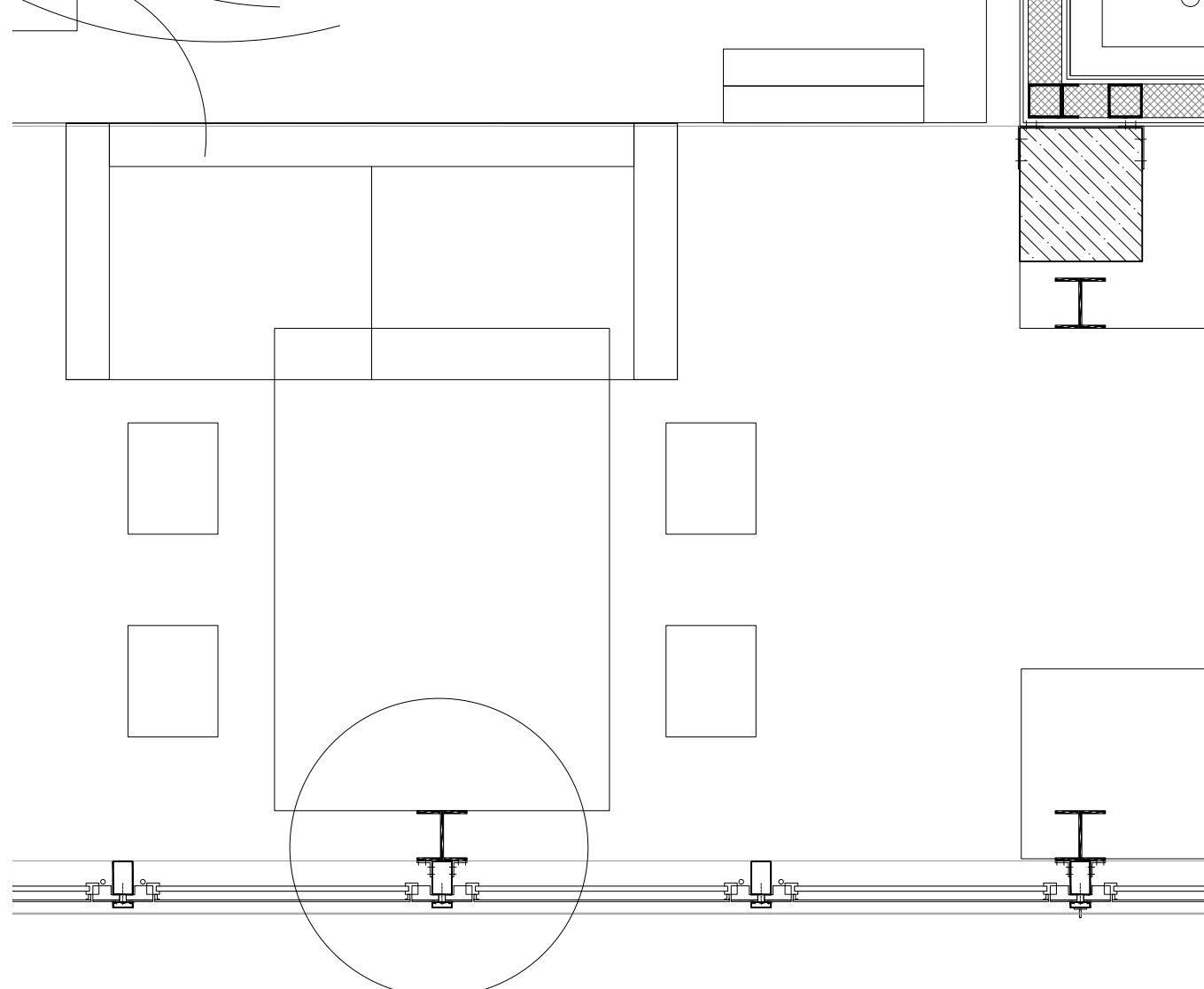


FACADE SEGMENT COURTYARD 1:20

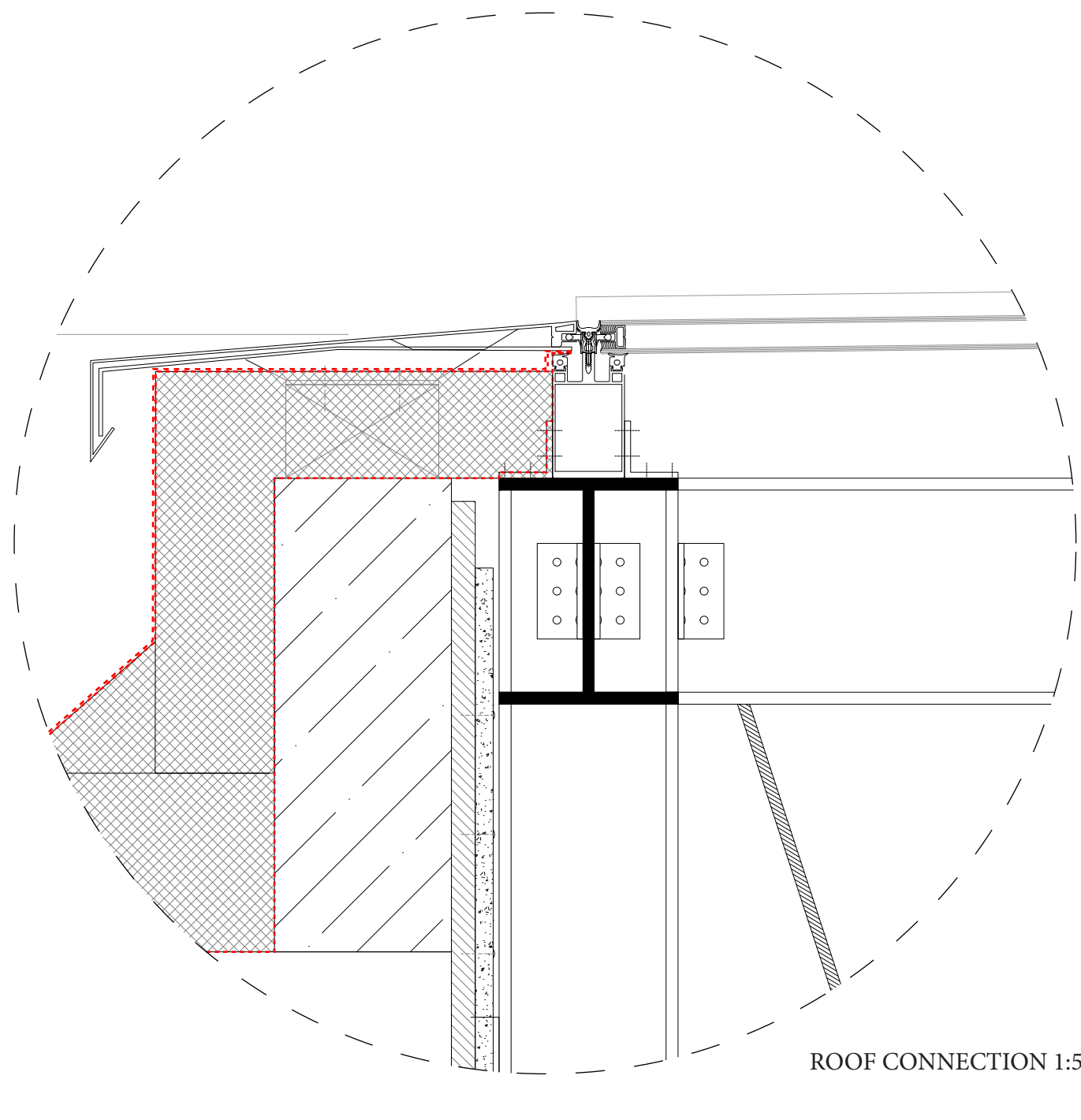




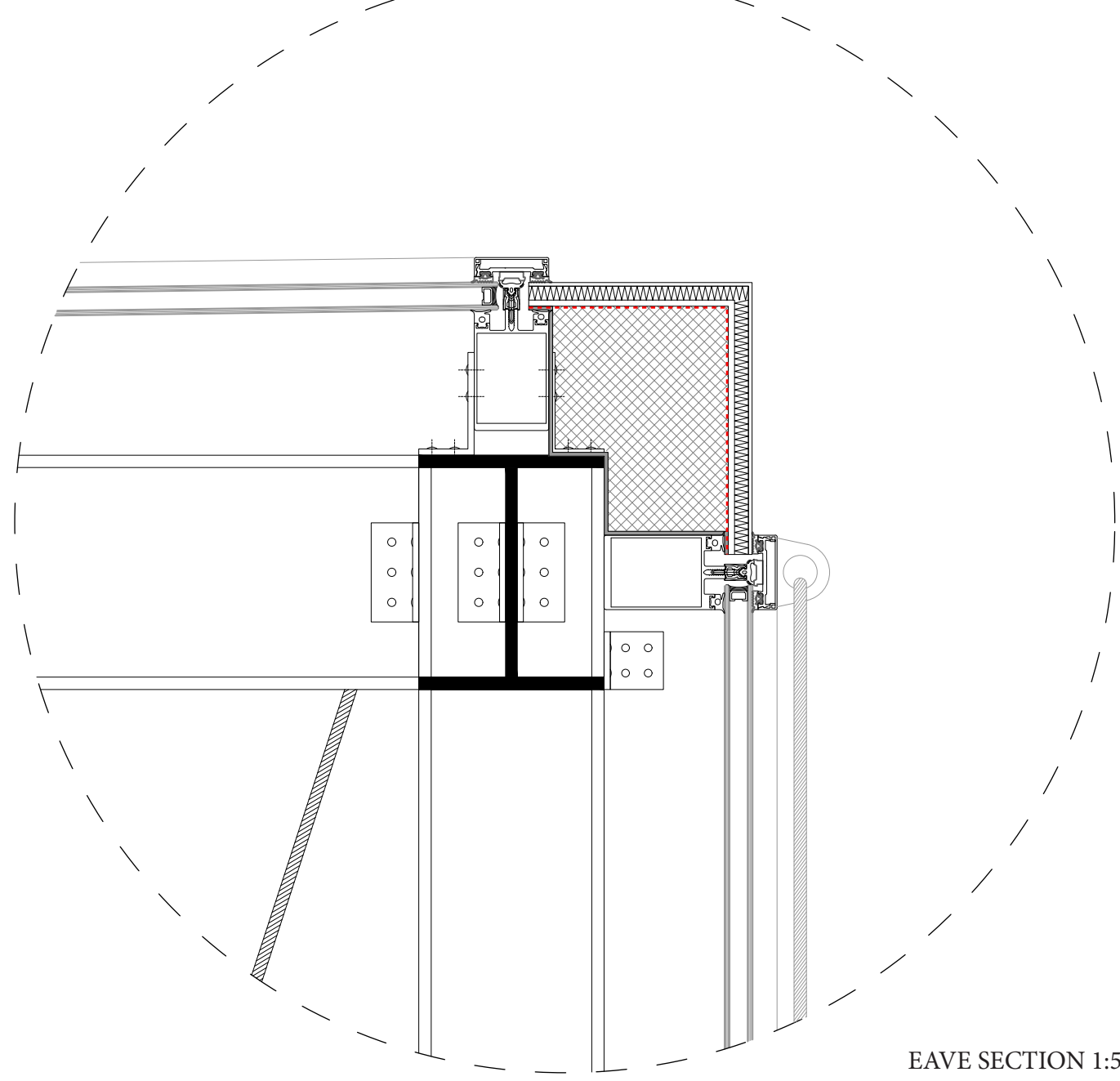
ELEVATION LIVING 1:20



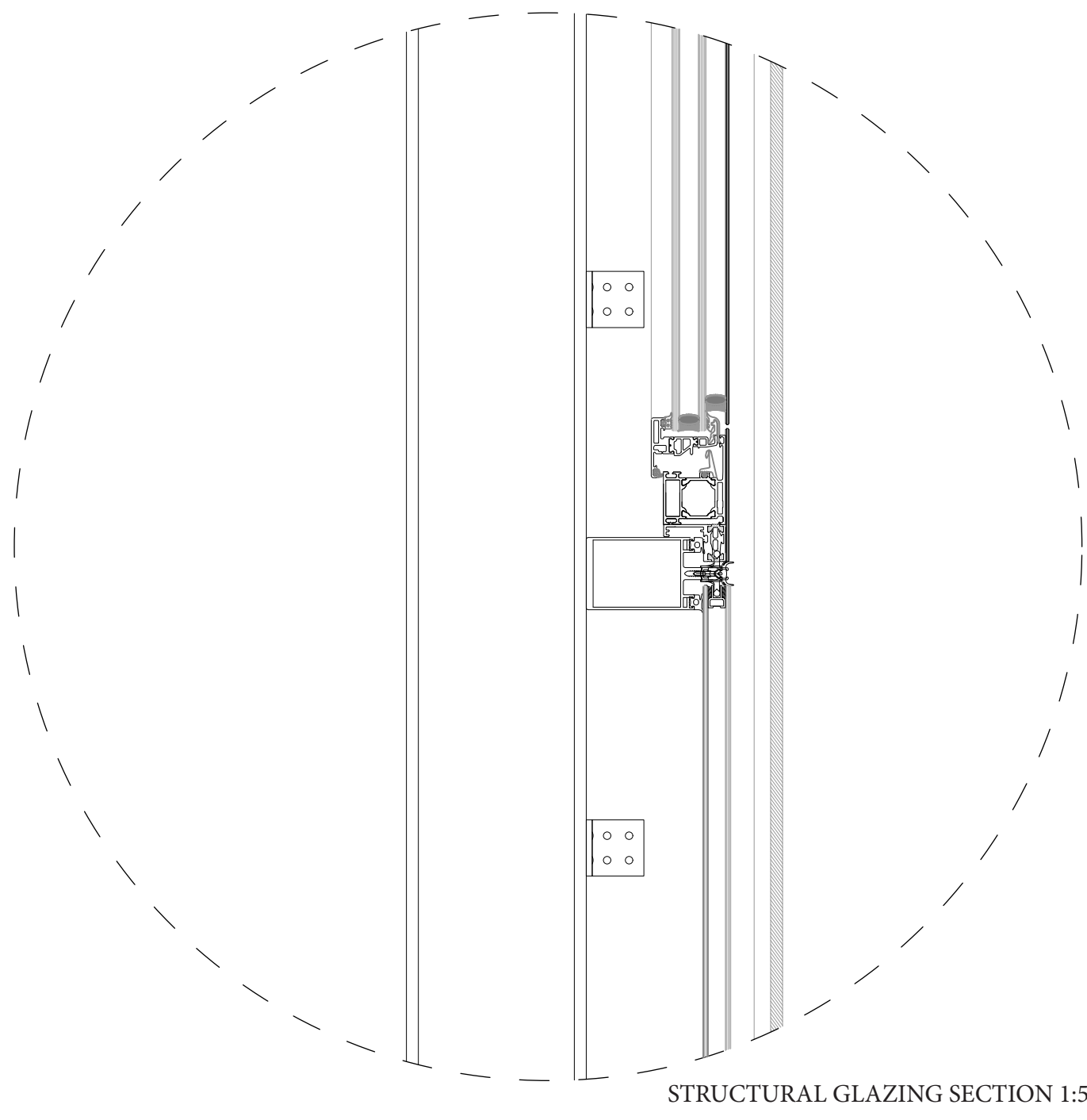
FACADE SEGMENT LIVING 1:20



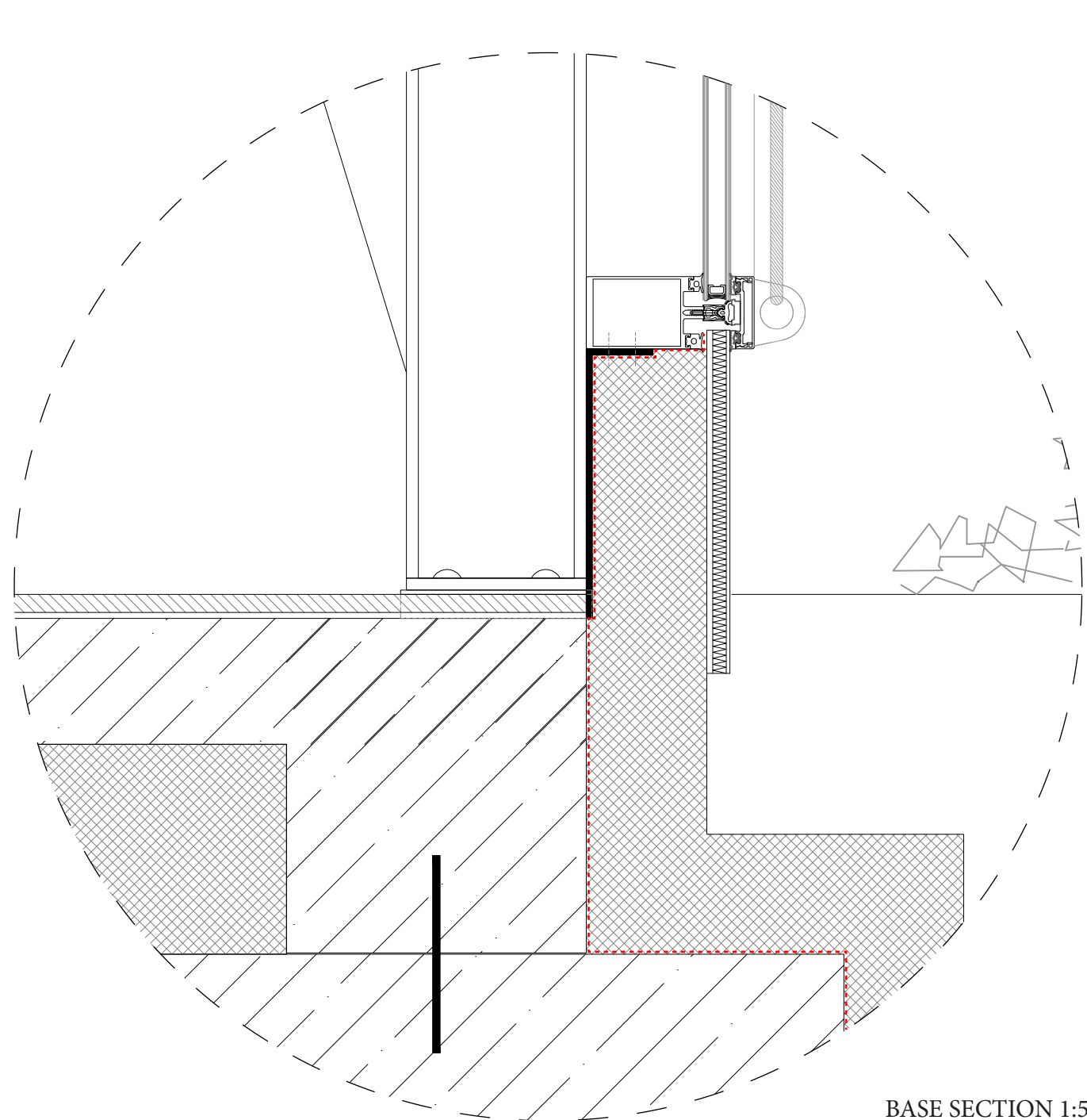
ROOF CONNECTION 1:5



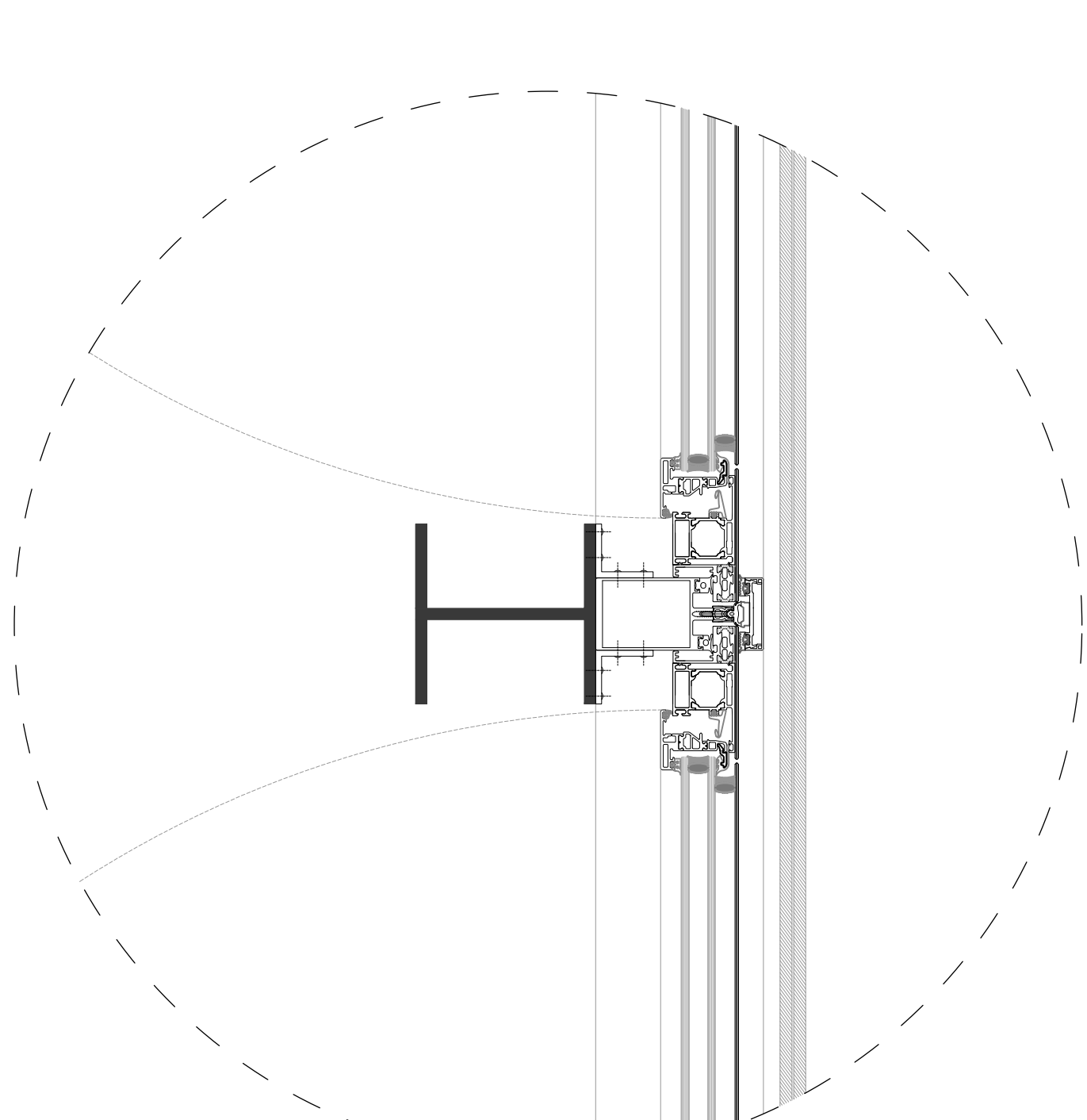
EAVE SECTION 1:5



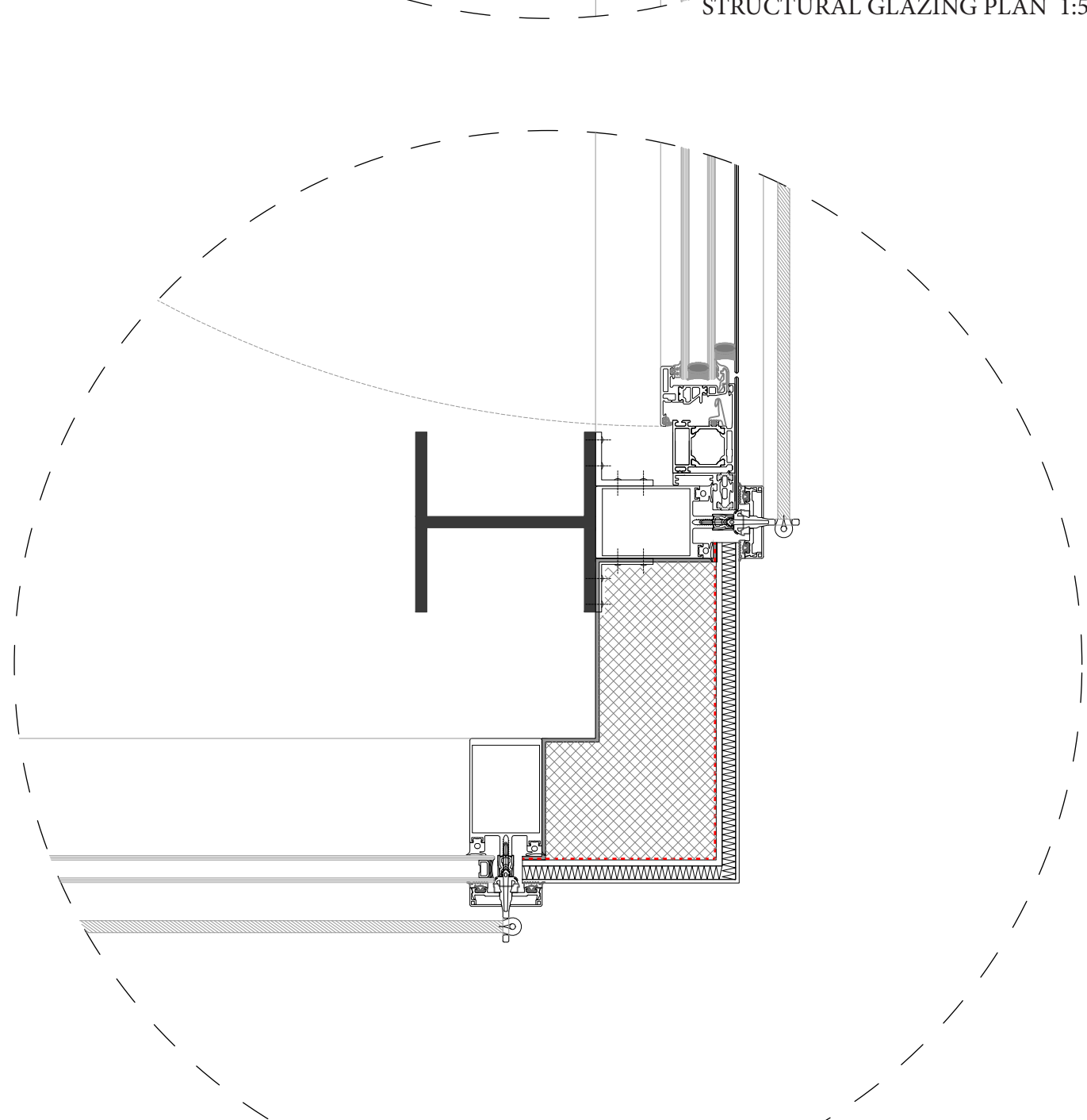
STRUCTURAL GLAZING SECTION 1:5



BASE SECTION 1:5



STRUCTURAL GLAZING PLAN 1:5



CORNER PLAN 1:5