

SUB-URBAN. REINVENTING PERI-URBAN VILLAGES

—Establishing coordinating urban-rural development through village transformation

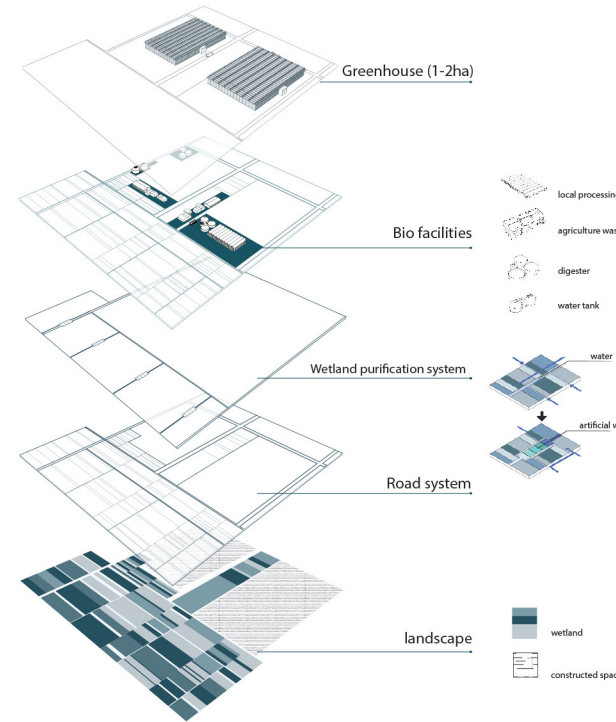
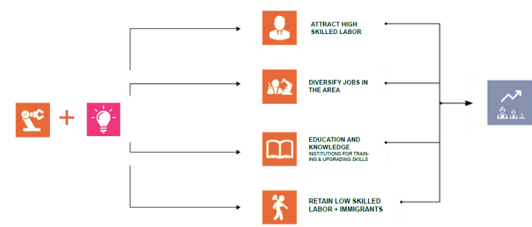
PRODUCTIVE

MODERN AGRICULTURE

Modern agriculture can effectively improve the output value of floriculture industry in peri-urban villages (Kunming).

The integration of knowledge elements and industry convergency can provide more jobs for local farmers and reduce the per capita input through the agglomeration effect.

Knowledge Agriculture



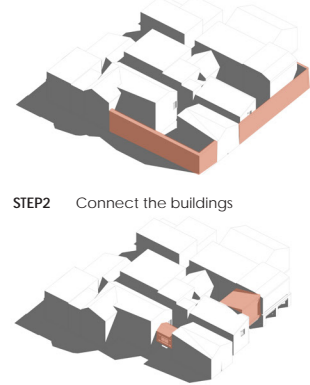
INTENSIFIED

ADAPTIVE NEIGHBORHOOD

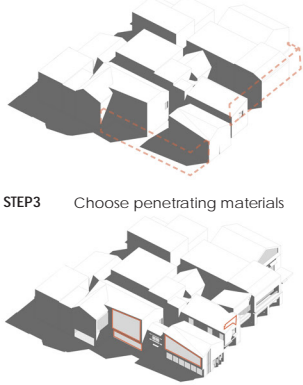
Activating the village's roads and water Banks has the potential for public Spaces.

Through the renovation of the building, the facades along the street are made permeable, making the housing at the front of the courtyard an attractive commercial space. The village is more inclusive and dynamic, while improving the multiple function of the village.

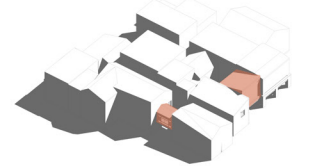
ORIGINAL wall as fence



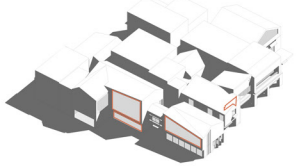
STEP1 Dismantle the fence



STEP2 Connect the buildings



STEP3 Choose penetrating materials

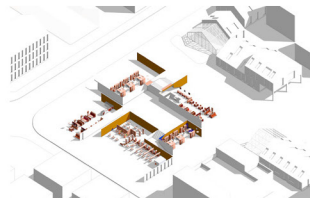


AFFORDABLE

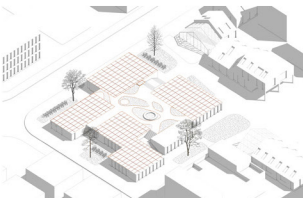
PREFABRICATED MODULES HOUSING

Using modular housing to provide flexible affordable housing to cope with unpredictable population growth in the future. Each block consists of a courtyard enclosed by the house. Along the street, there is a ground-floor business, and the courtyard provides residents with community garden and public space. These elements together constitute a livable and activated neighborhood.

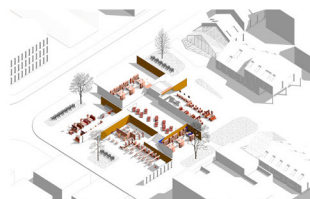
STEP 1 Business space in first floor



STEP 3 Roof garden



STEP 2 Parking lot



STEP 4 Housing

