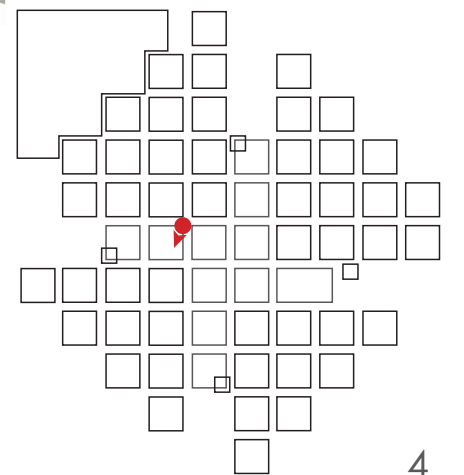
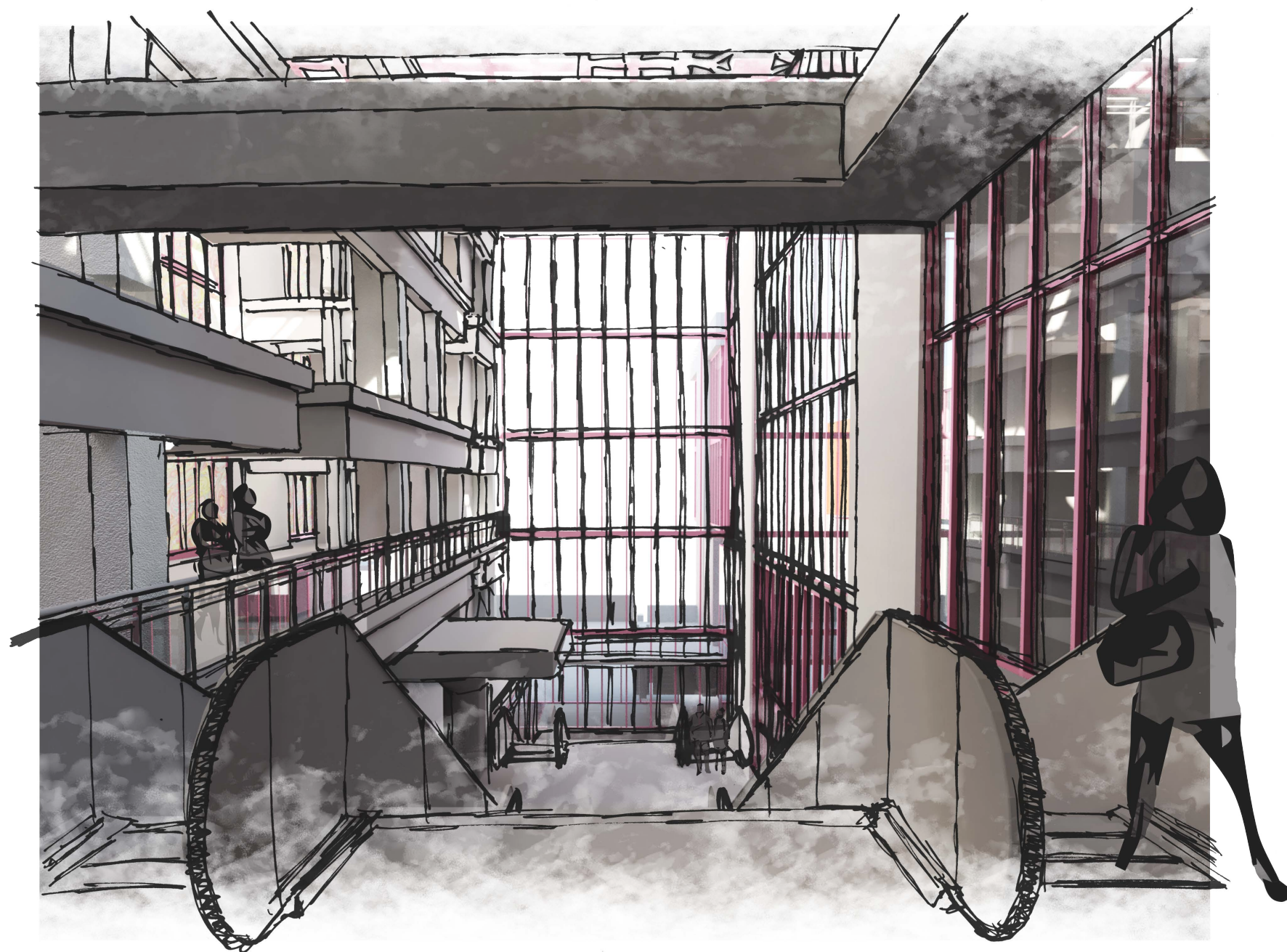


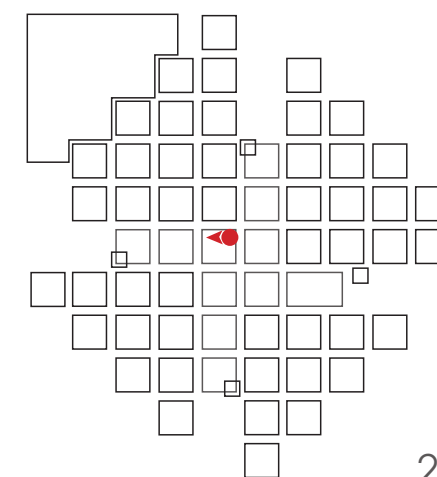
View from the walkway with the transport bridge of granulate in the back



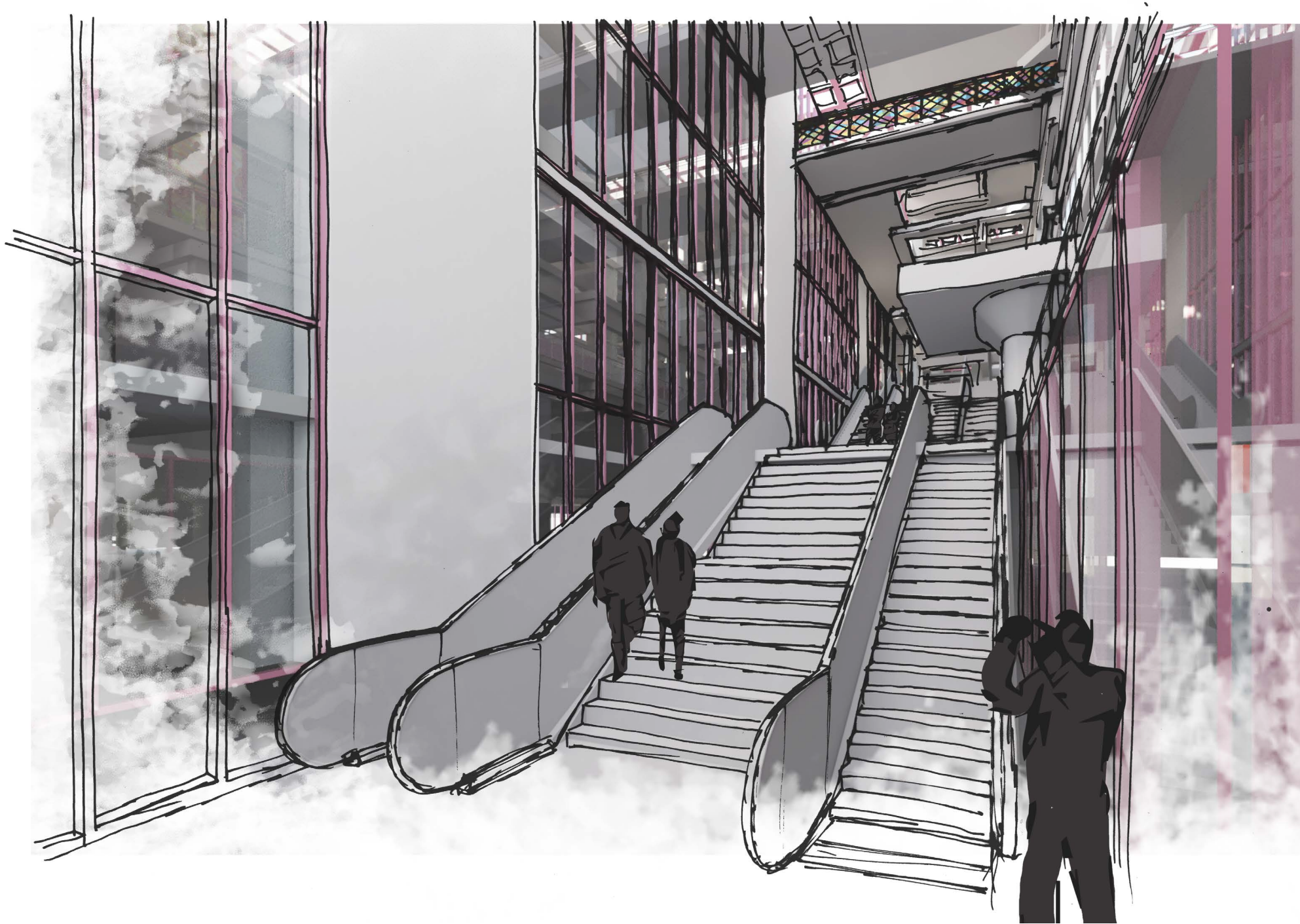




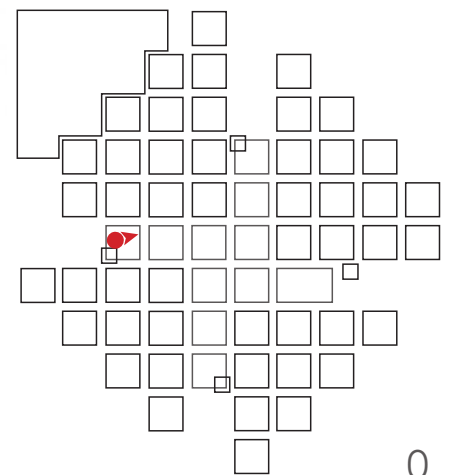
View from the inner street down to level 0







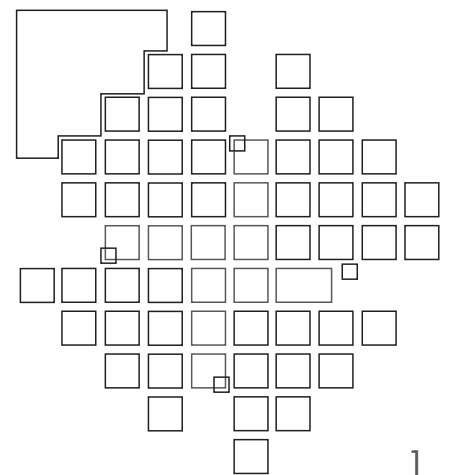
Entrance at level 0 (South West)







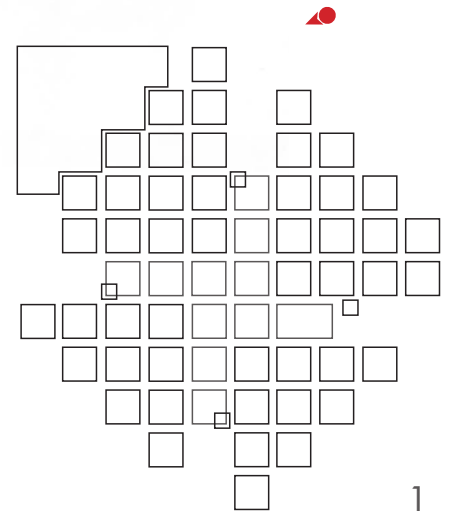
Entrance at level 1 (North East)



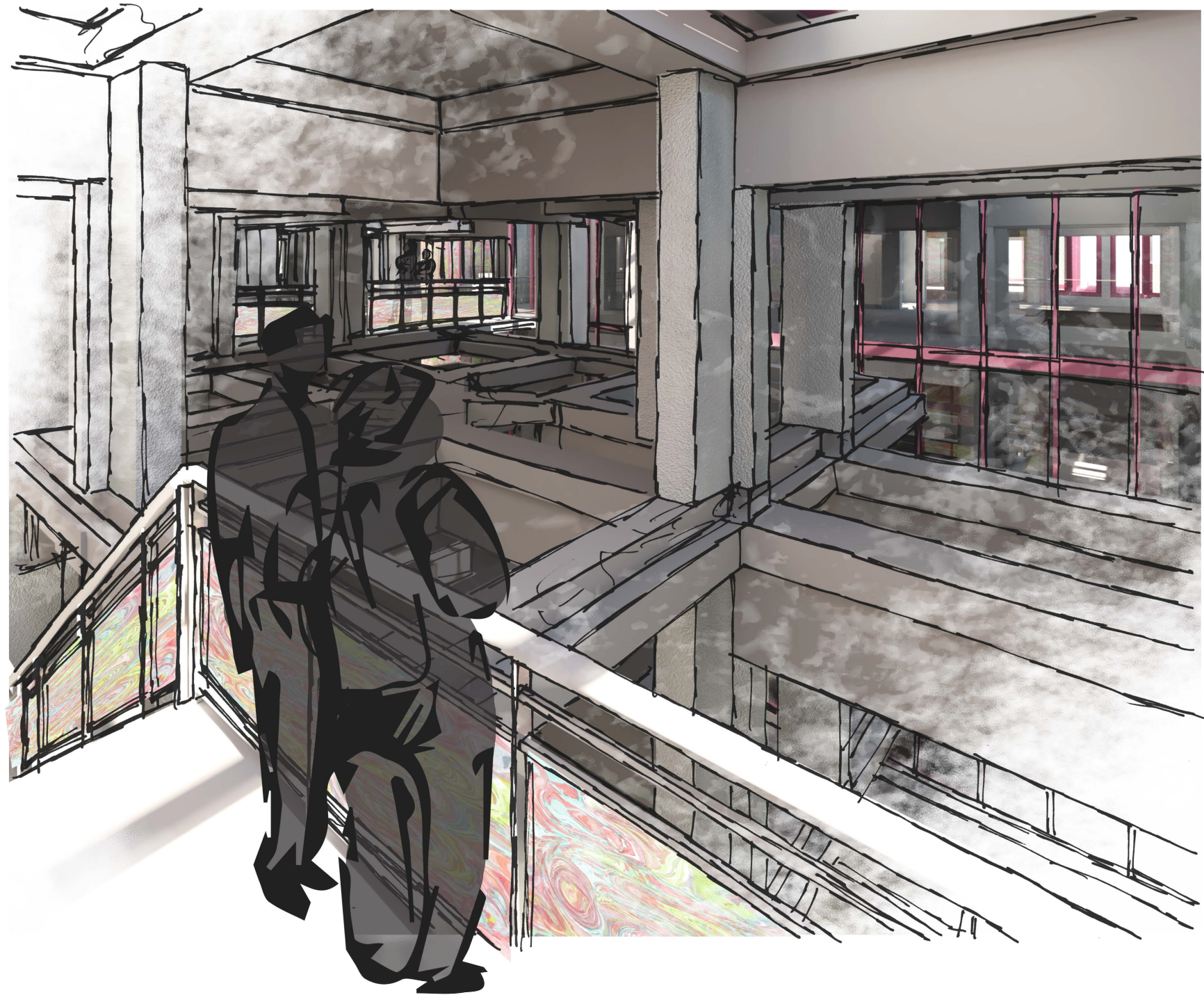




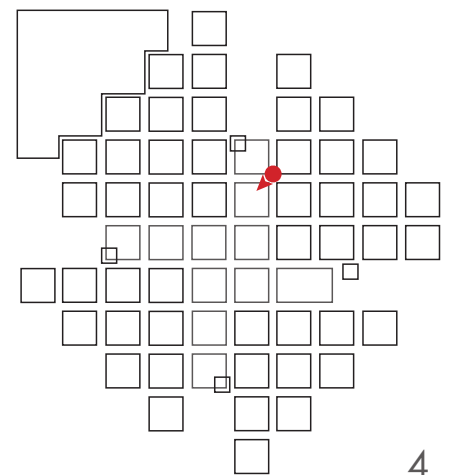
Entrance at level 2 (North West)



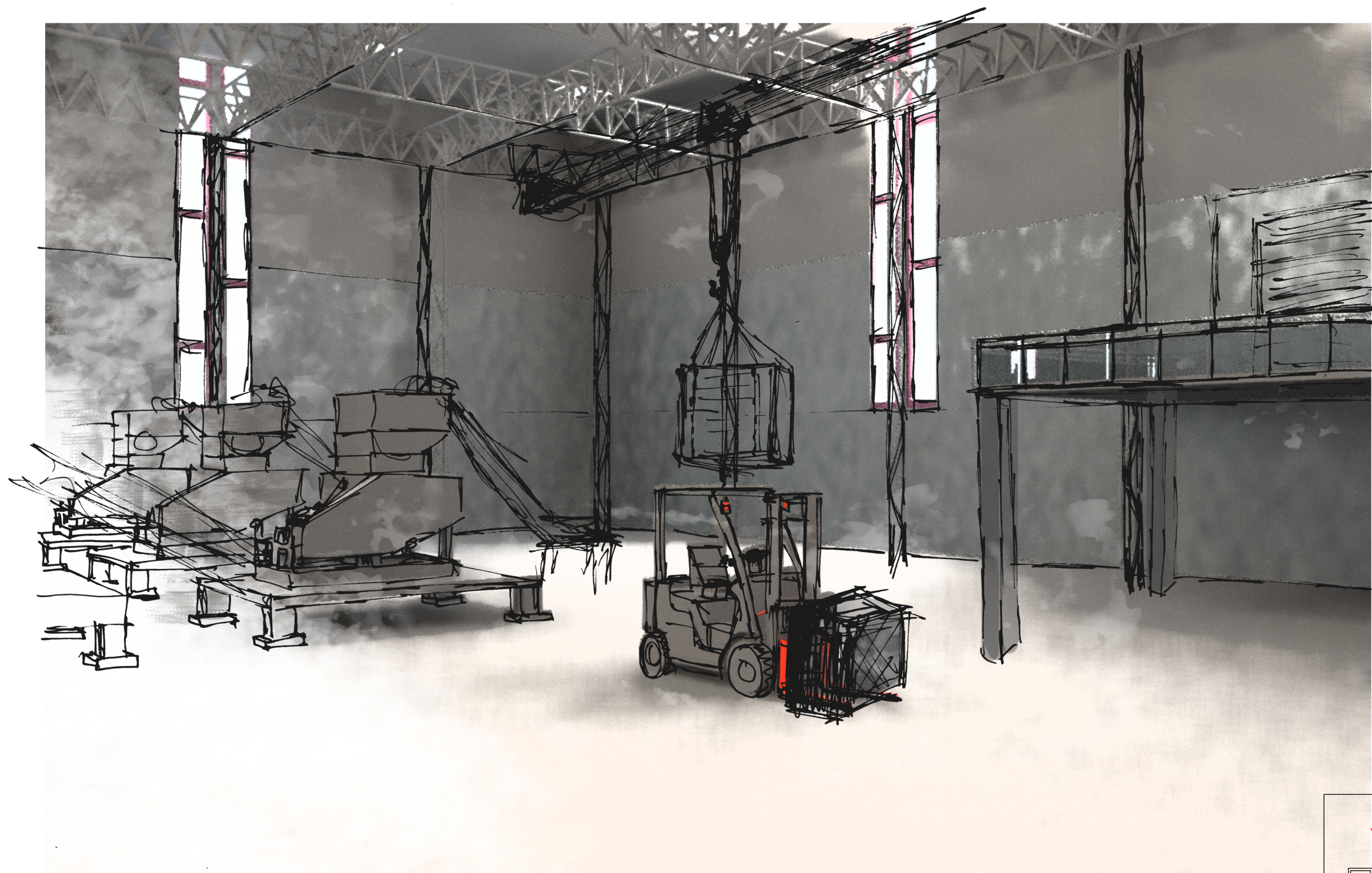




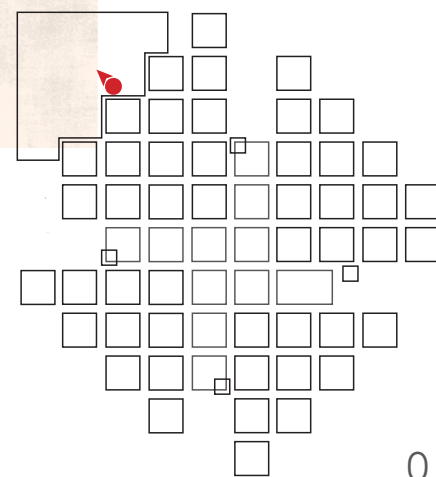
View on the existing construction



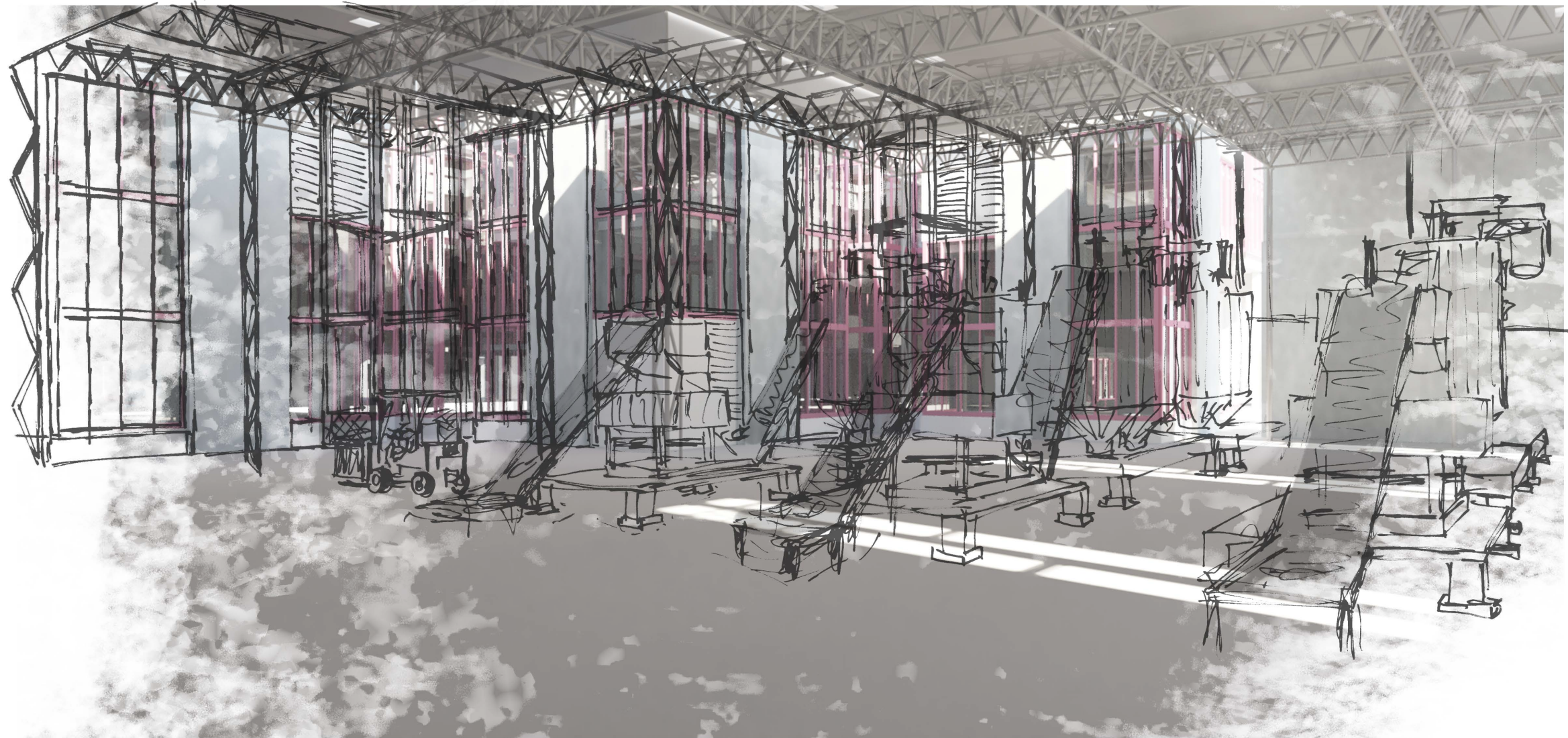




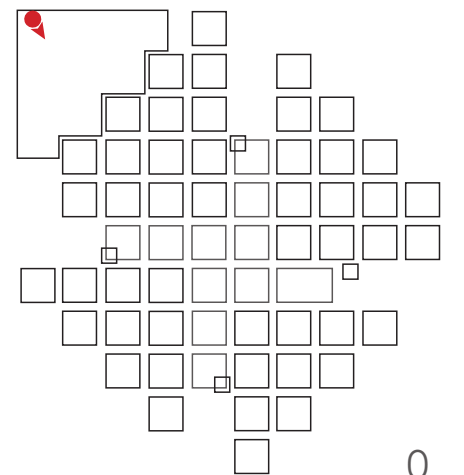
The new factory hall



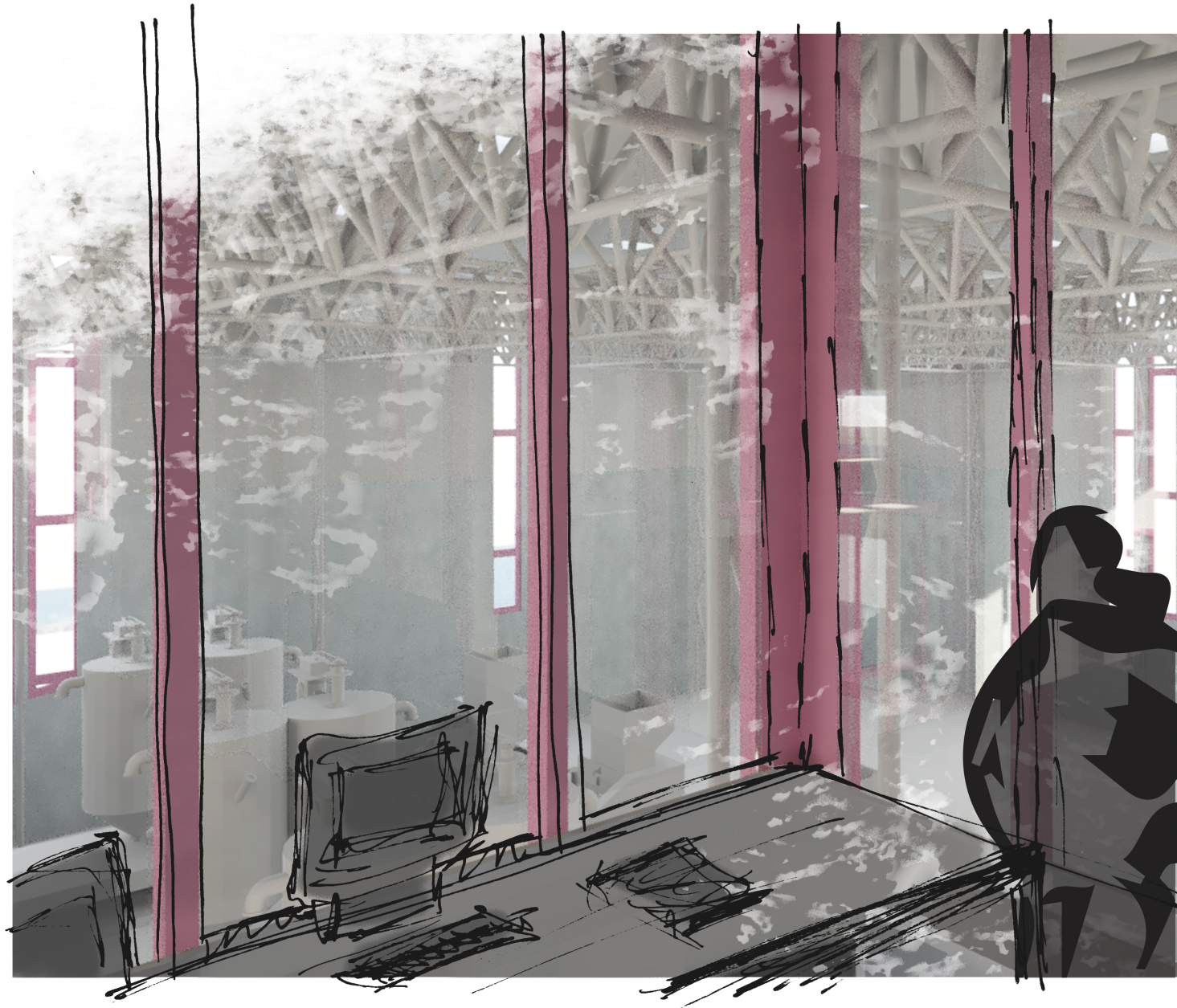




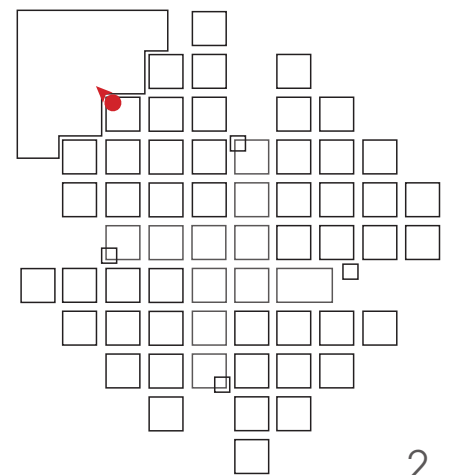
The new factory hall with the existing facade in the back







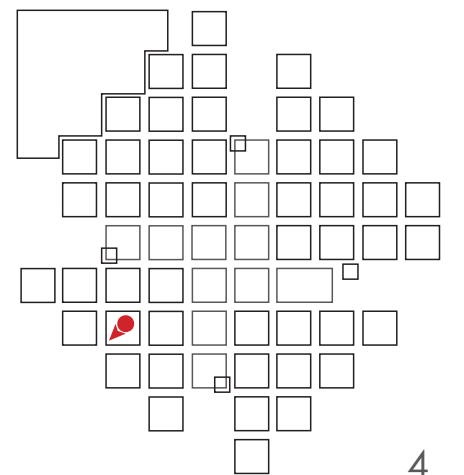
View from the control room in the factory hall



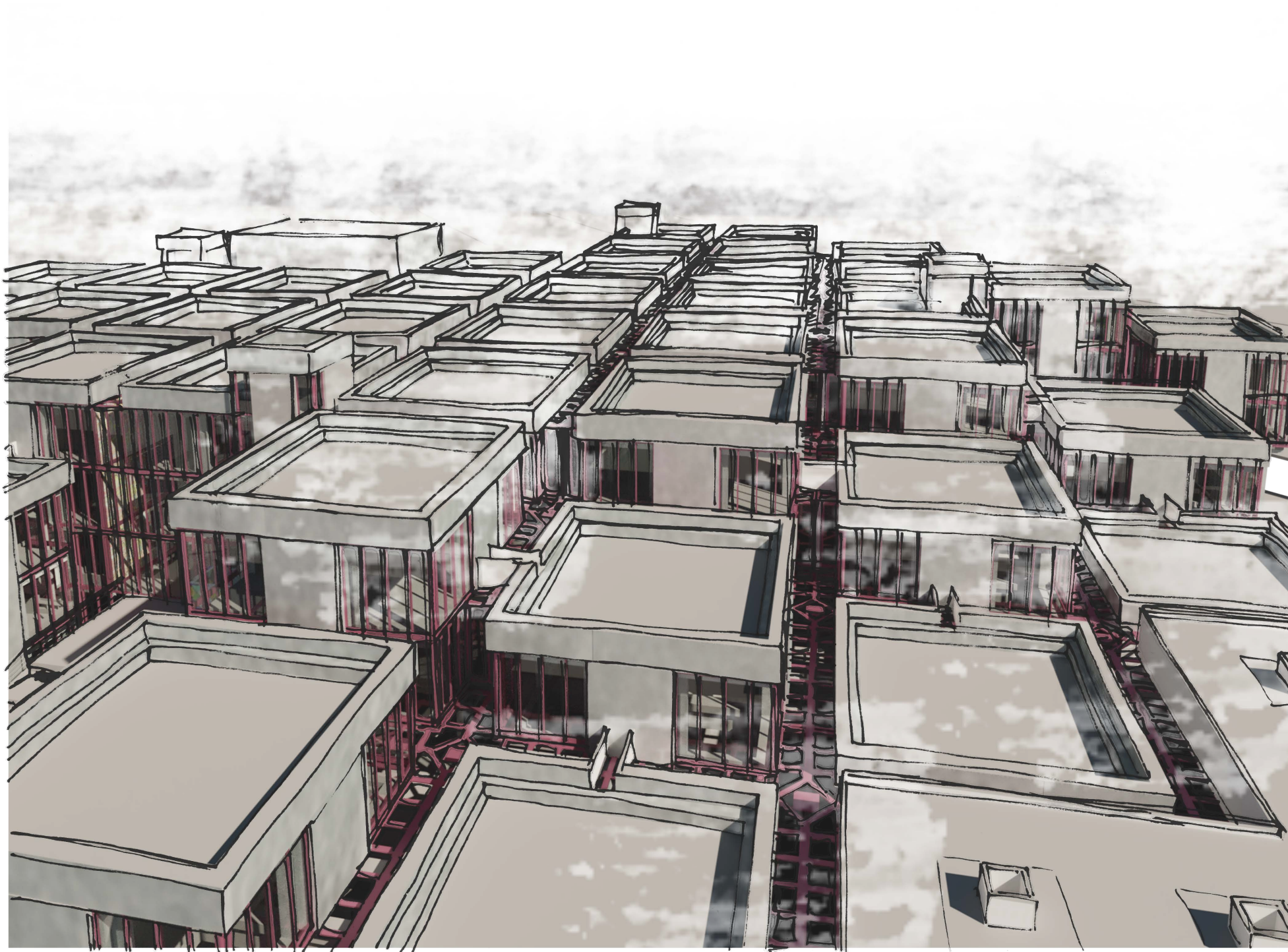




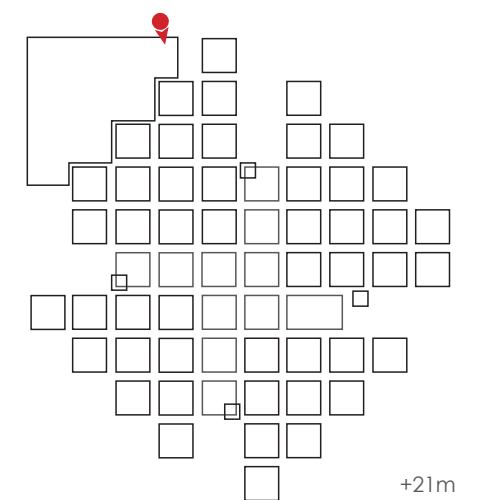
Museum 'Do it yourself'







Roof landscape



+21m