

STRUCTURE

- RECLAIMED STEEL, POWDER COATED
- HORIZONTAL AND VERTICAL REPETITION

VOLUMES

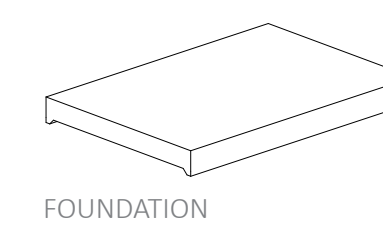
- LEVELY GROUND FLOOR
- GATHERED AROUND TOWER

INFRASTRUCTURE

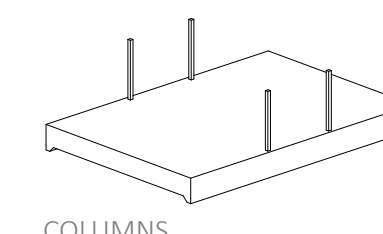
- PUBLIC BUILDING
- SEVERAL ENTRANCES

CULTIVATION

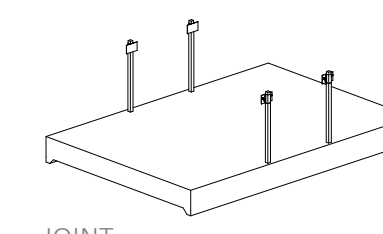
- 2500 M² (AROUND 6.300 LETTUCE)
- FRUITS, VEGETABLES, SPICES, FLOWERS, INSECTS



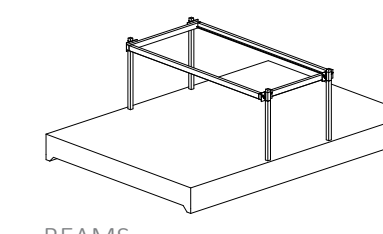
FOUNDATION



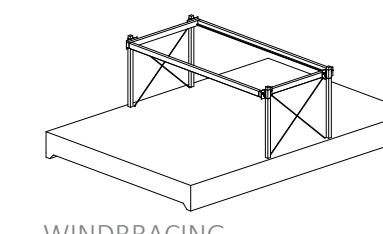
COLUMNS



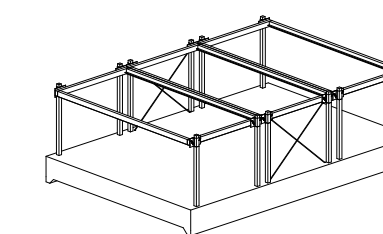
JOINT



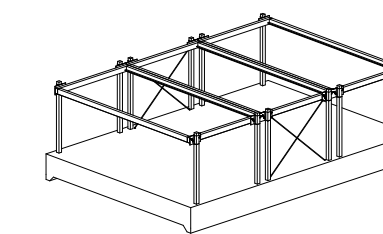
BEAMS



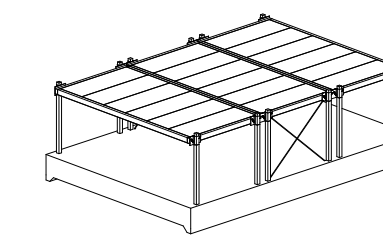
WINDBRACING



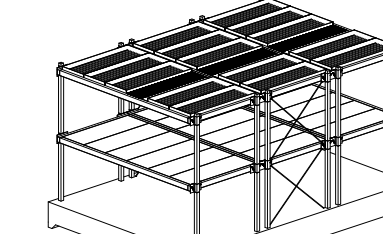
REPETITION



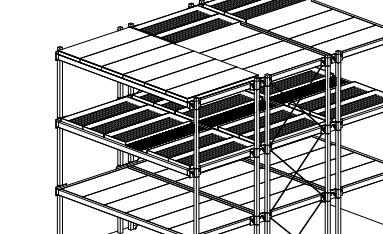
CONNECTION



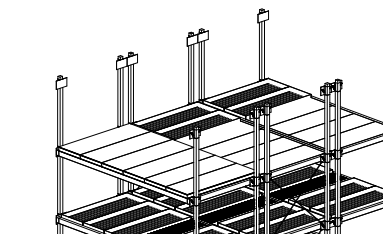
FLOOR ELEMENTS



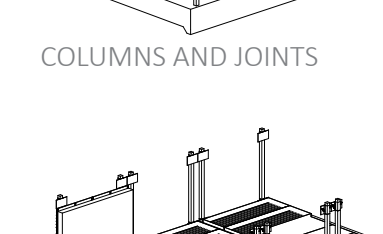
SECOND LEVEL



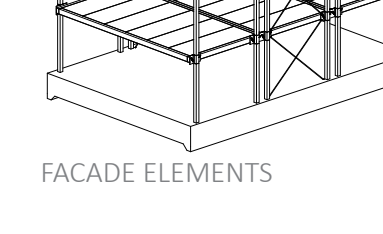
THIRD LEVEL



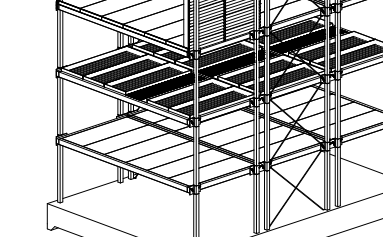
COLUMNS AND JOINTS



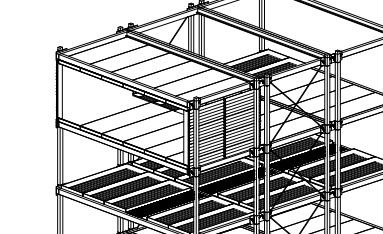
FACADE ELEMENTS



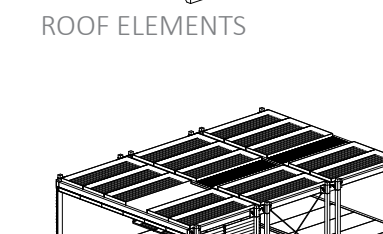
BEAMS



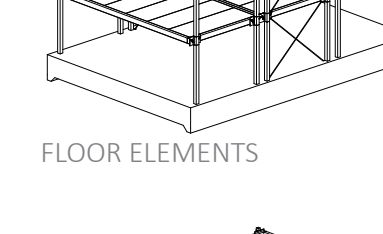
ROOF ELEMENTS



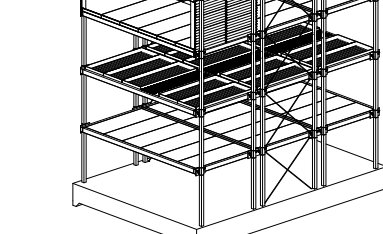
FLOOR ELEMENTS



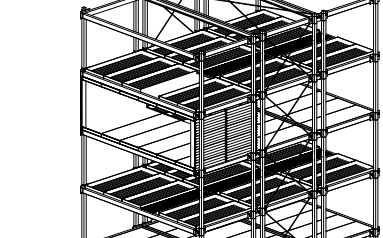
FOURTH LEVEL



WINDBRACING



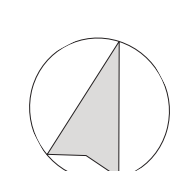
WINDBRACING



WINDBRACING

BUILDING PRINCIPLE

AXONOMETRIC



1:500

NATURAL DIMENSIONS
CULTIVATION IN INNERCITIES

ANDREA .W. NIENOORD