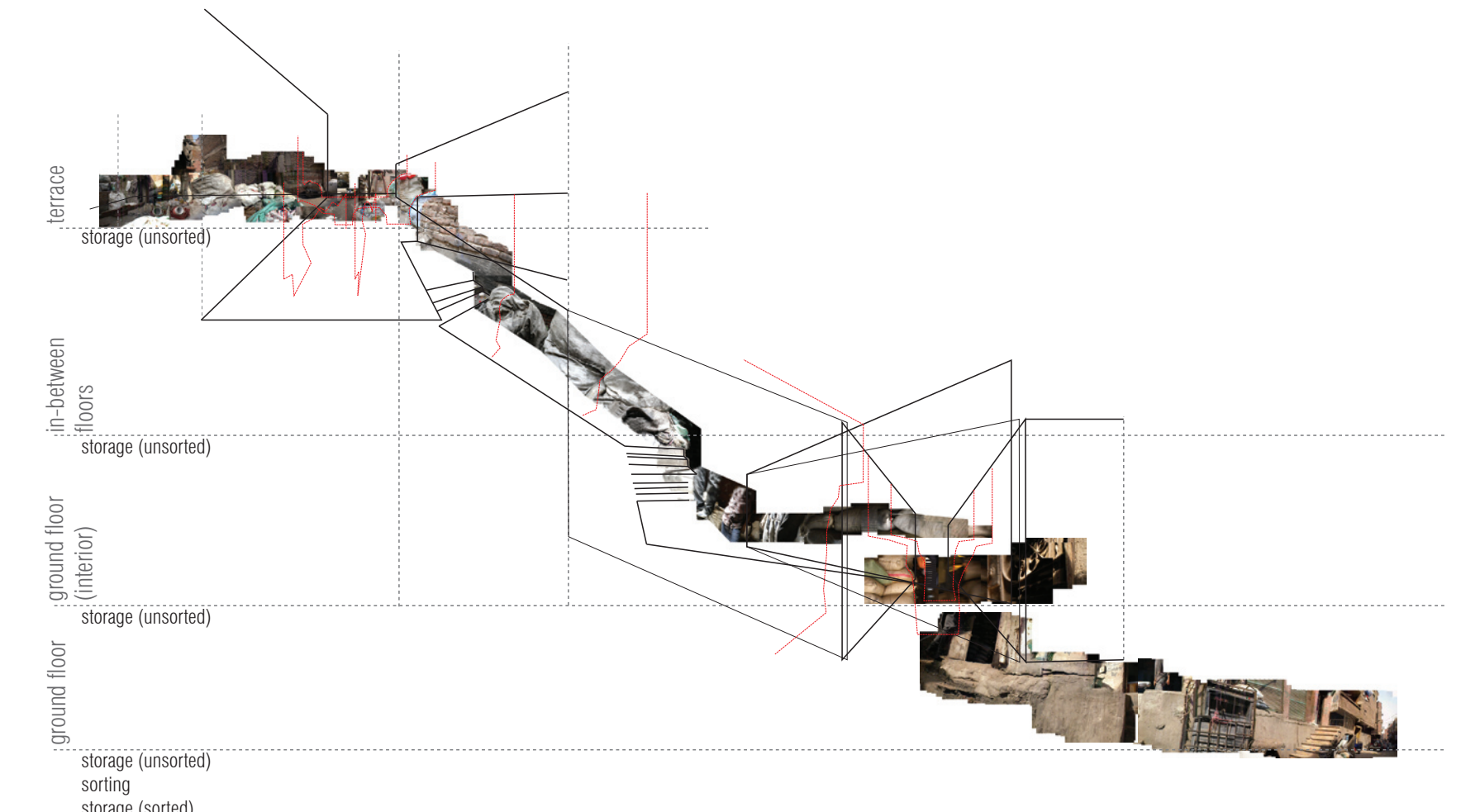


DISORDER POTENTIALS

A COPTIC CEMETERY IN MANSHIYET NASSER



site: Manshiyet Nasser (Garbage City)

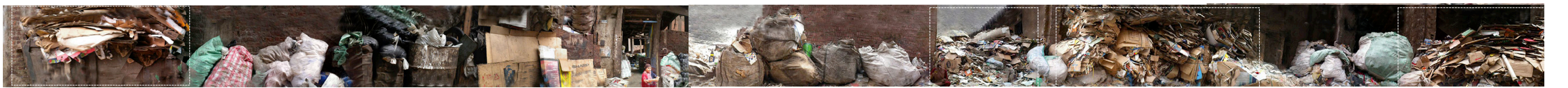
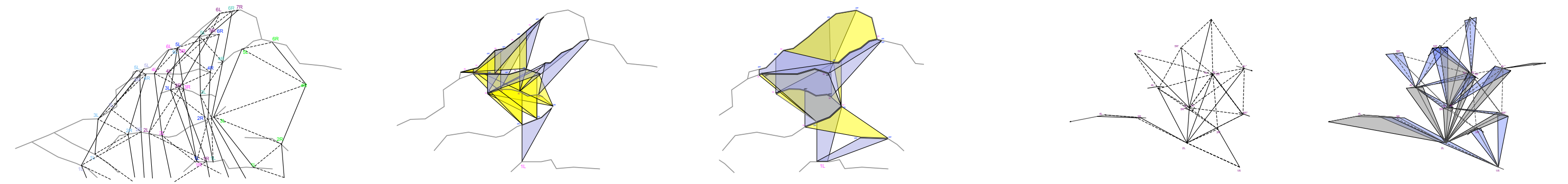
this settlement was established in 1969. The population was 15,000 in 1987 and might have doubled in the present. The Zabaleen sort through the garbage in attempt to retrieve any potentially useful or recyclable items.



climbing maps.

networks of voids in garbage stacks
the voids differ according to kind of element and whether it concerns a disorderly or orderly configuration

altered landscape / ephemerality
periodical occupation of public and private space by garbage, creation of high and low density areas, stacks of garbage temporary bridge different levels of the existing built environment

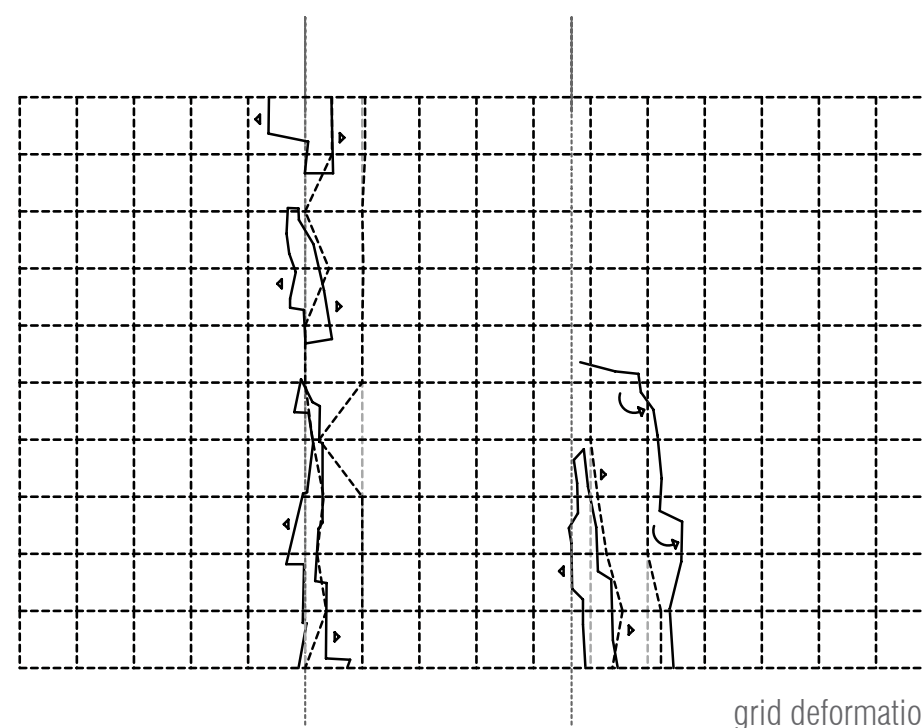


grid deformation.

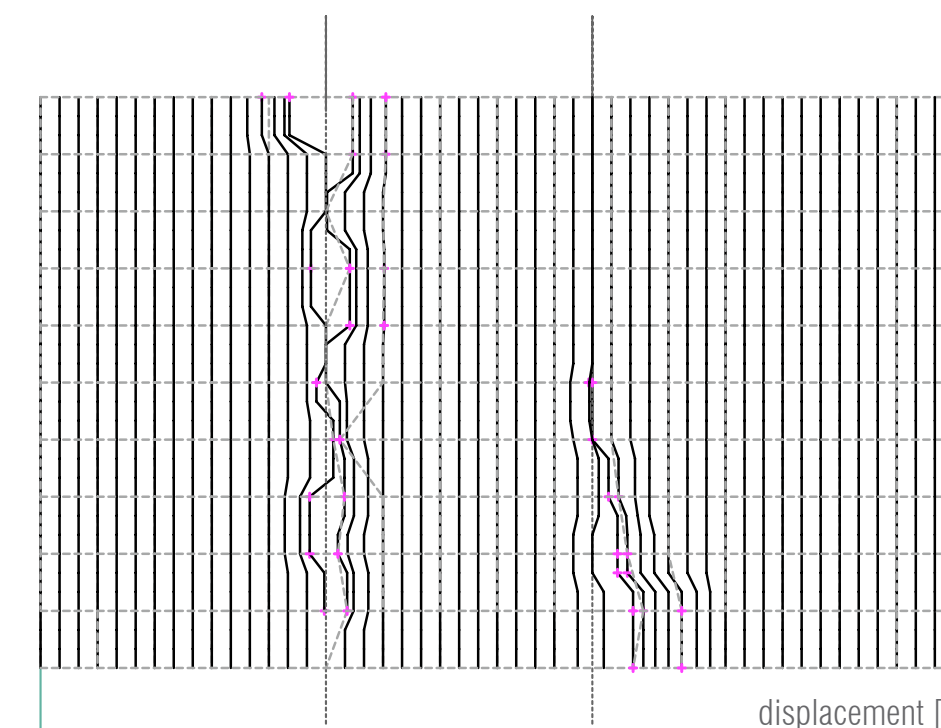
creation of voids by elements' deformation or displacement

2D grid is applied on image that depicts the front view of a stack of compressed cans
b. stack of cardboards

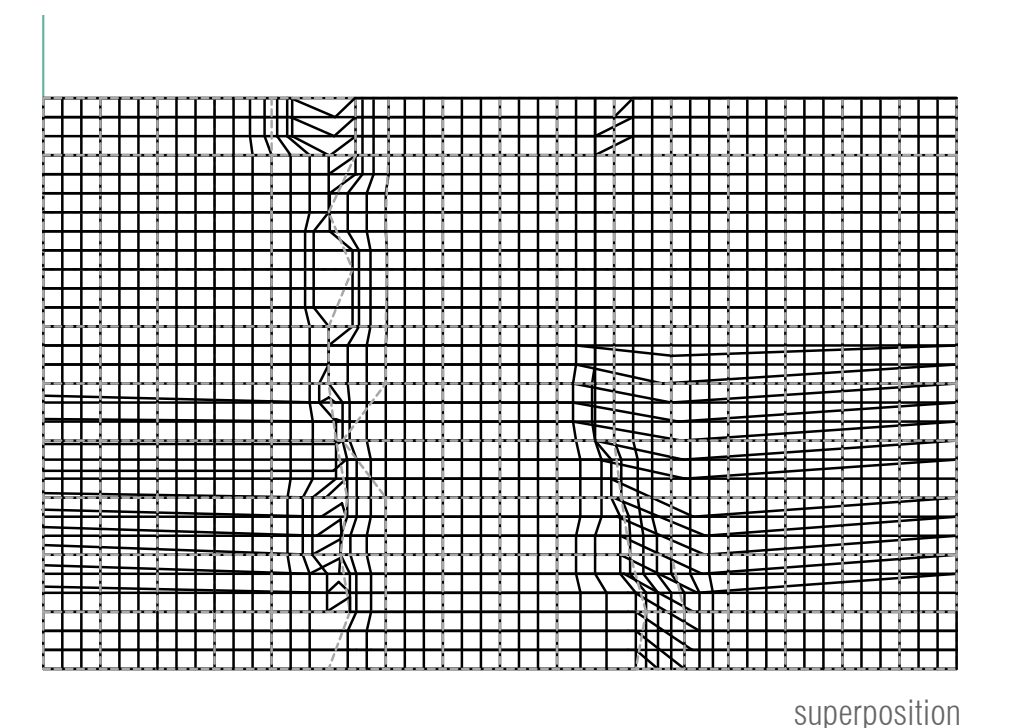
>>> deformation of the grid in accordance with the voids



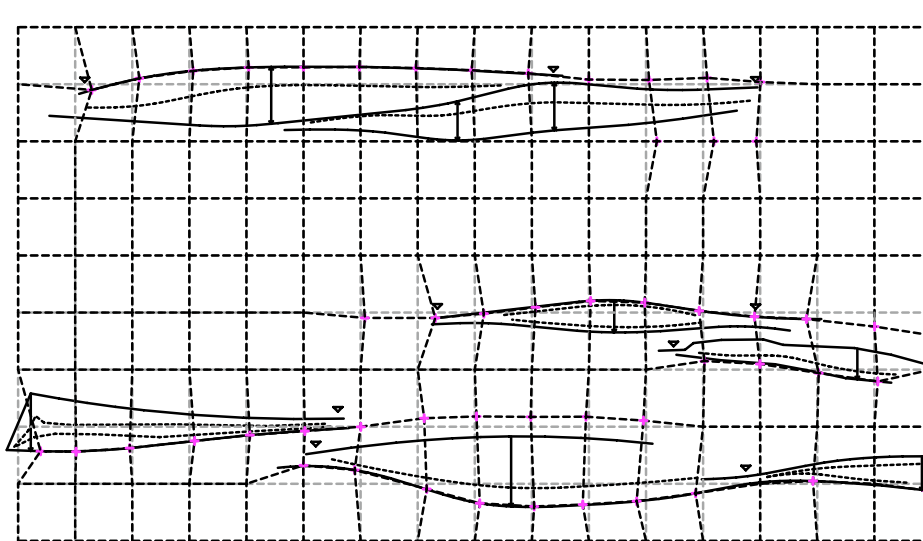
grid deformation



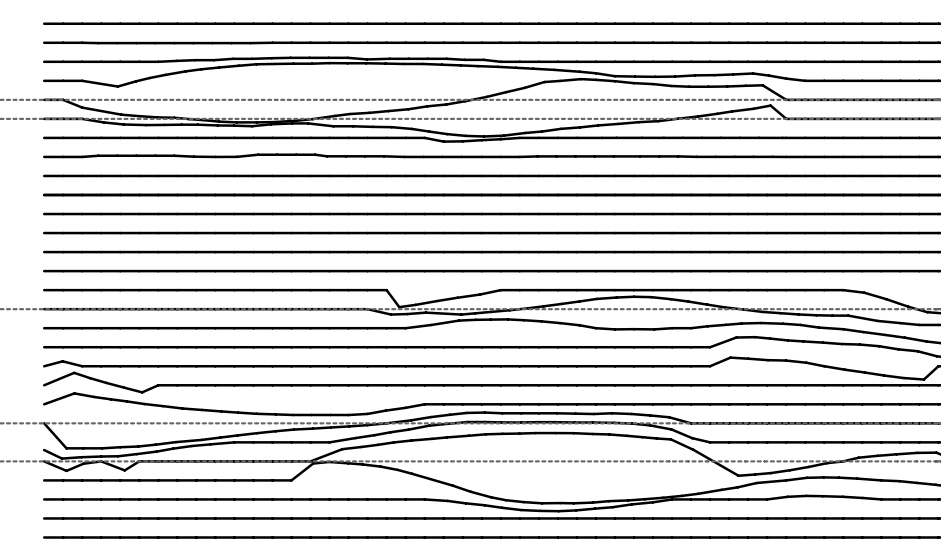
displacement [x]



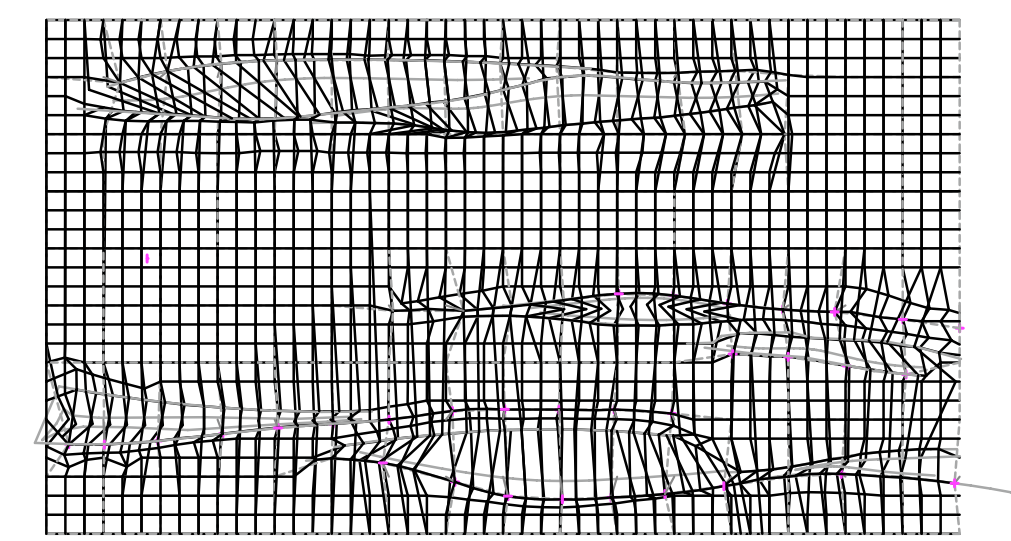
superposition



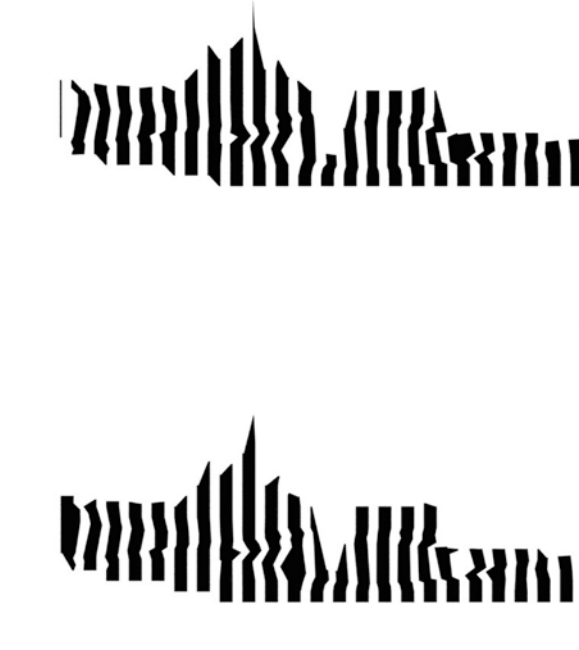
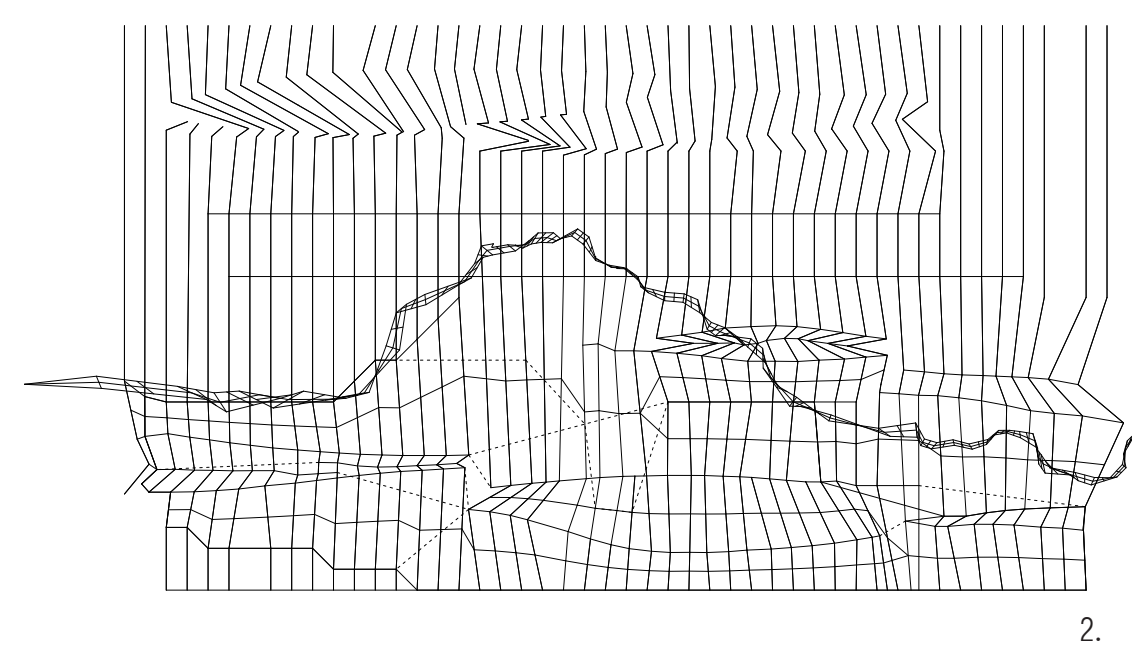
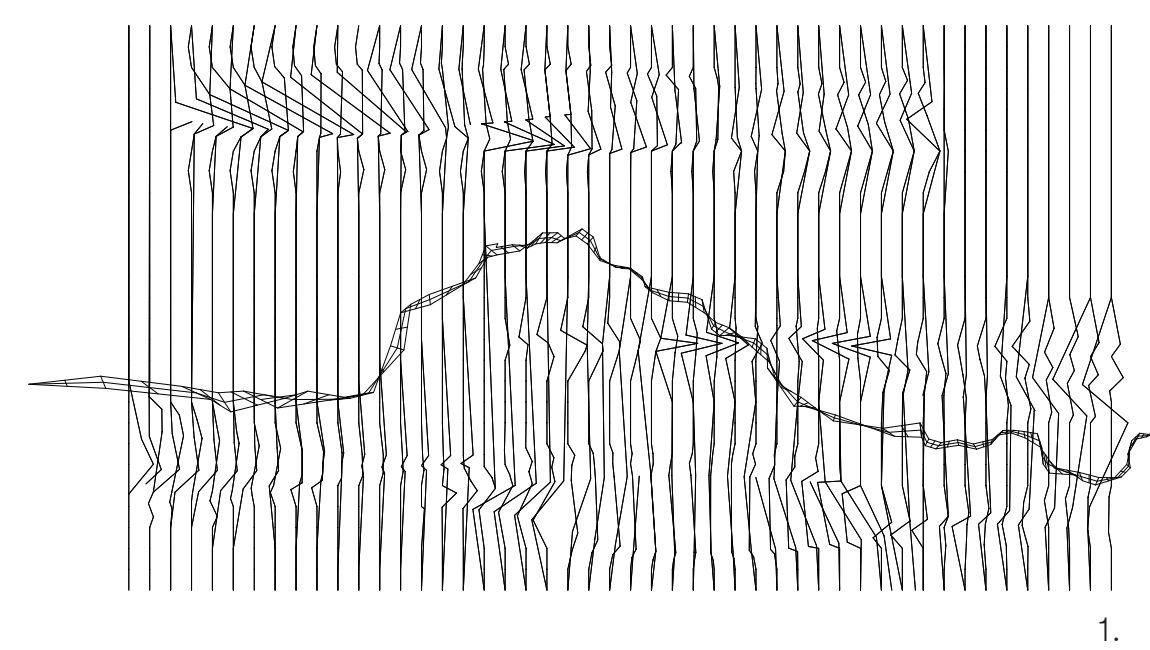
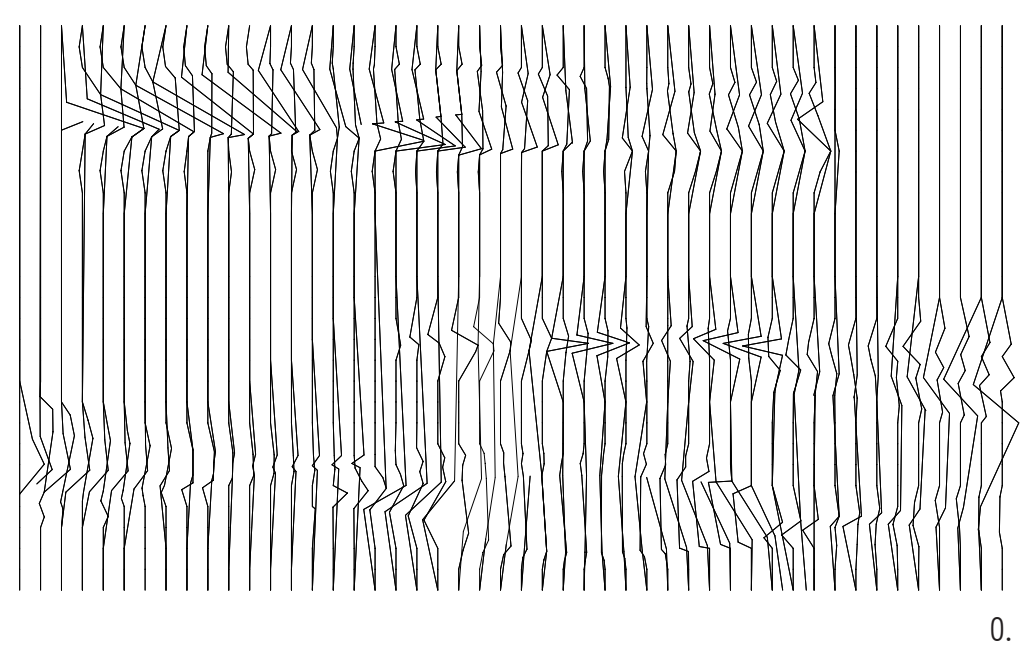
grid deformation



deformation [z]



superposition



0. initial diagram [deformation / depth] grid deformation

1. application of depth-diagram on site. [cliff's top view "curve" coincides with the deformed element's curve - image on which the diagram is based]

2. contours for trimming [in order to define the route, the "pockets" variations between floors]

3. final shape

