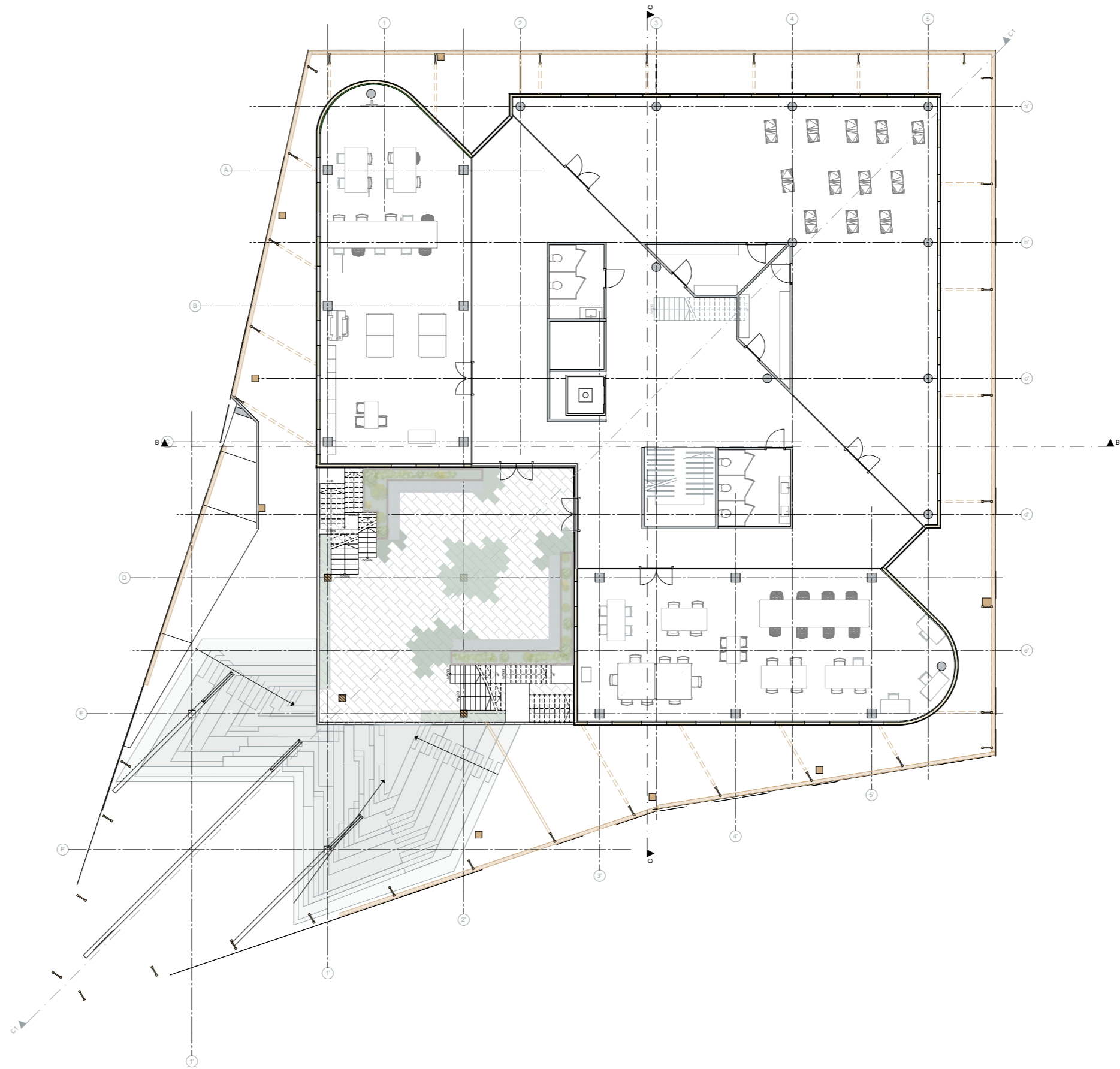
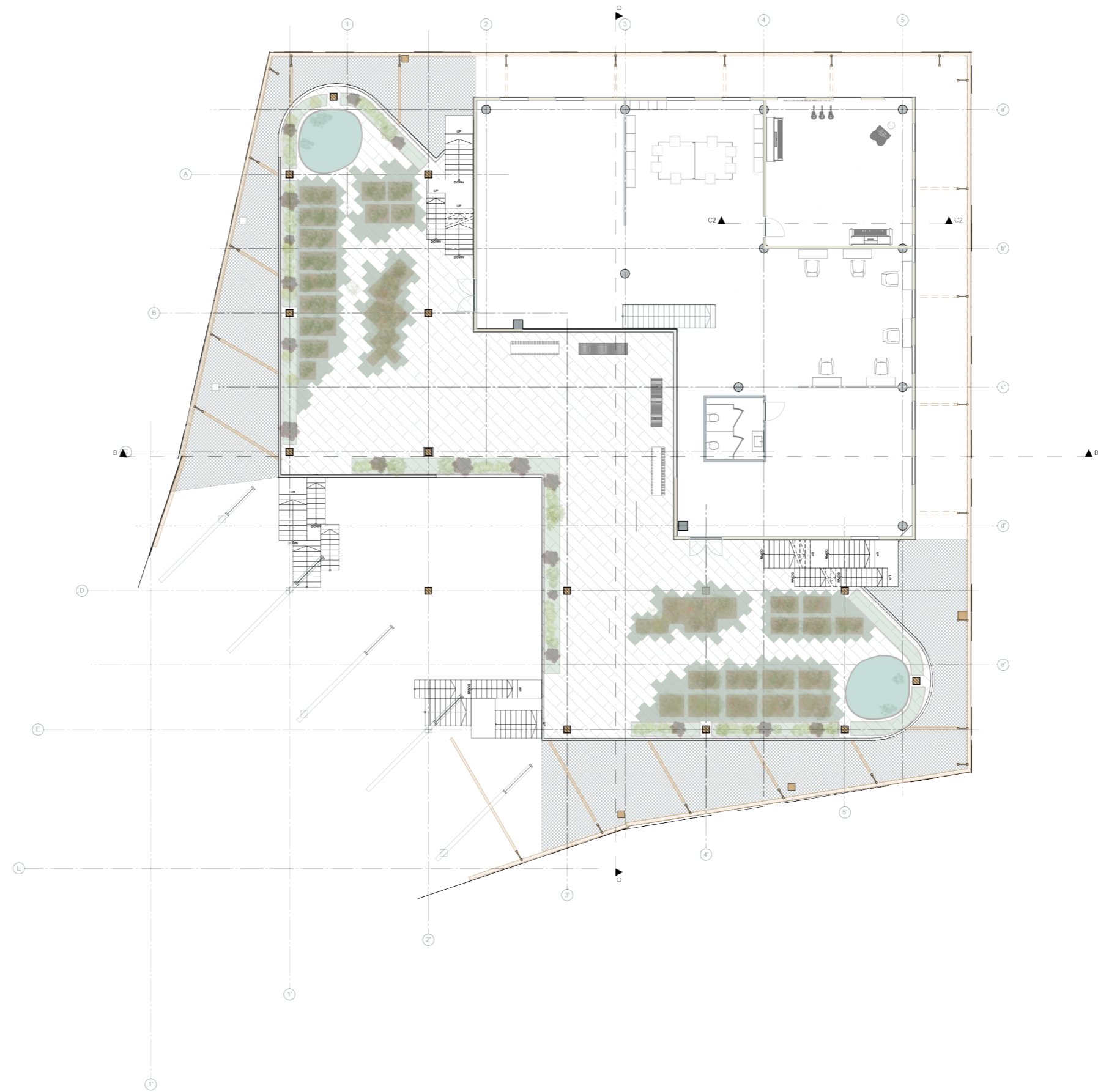


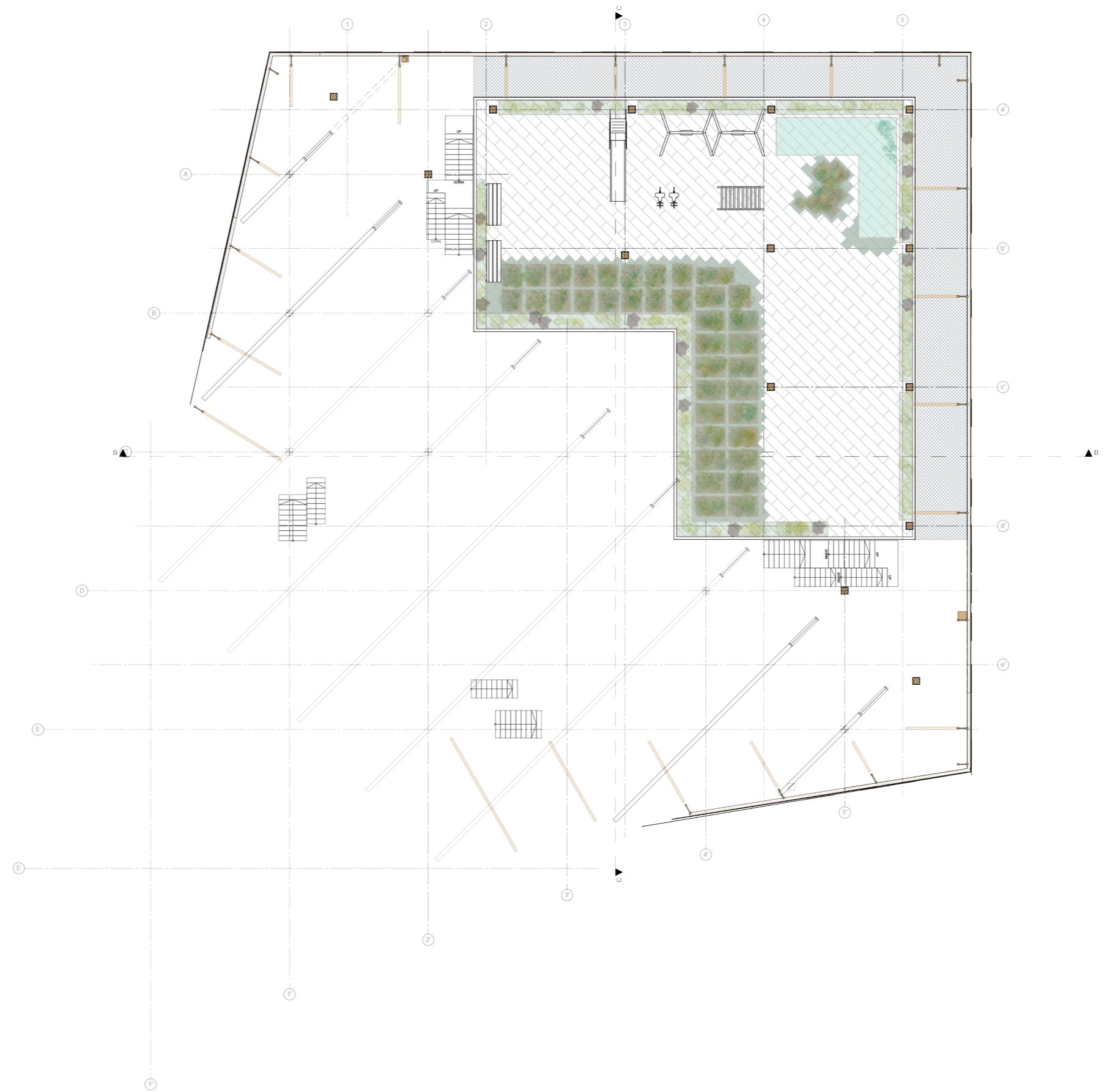
EXPLORAY

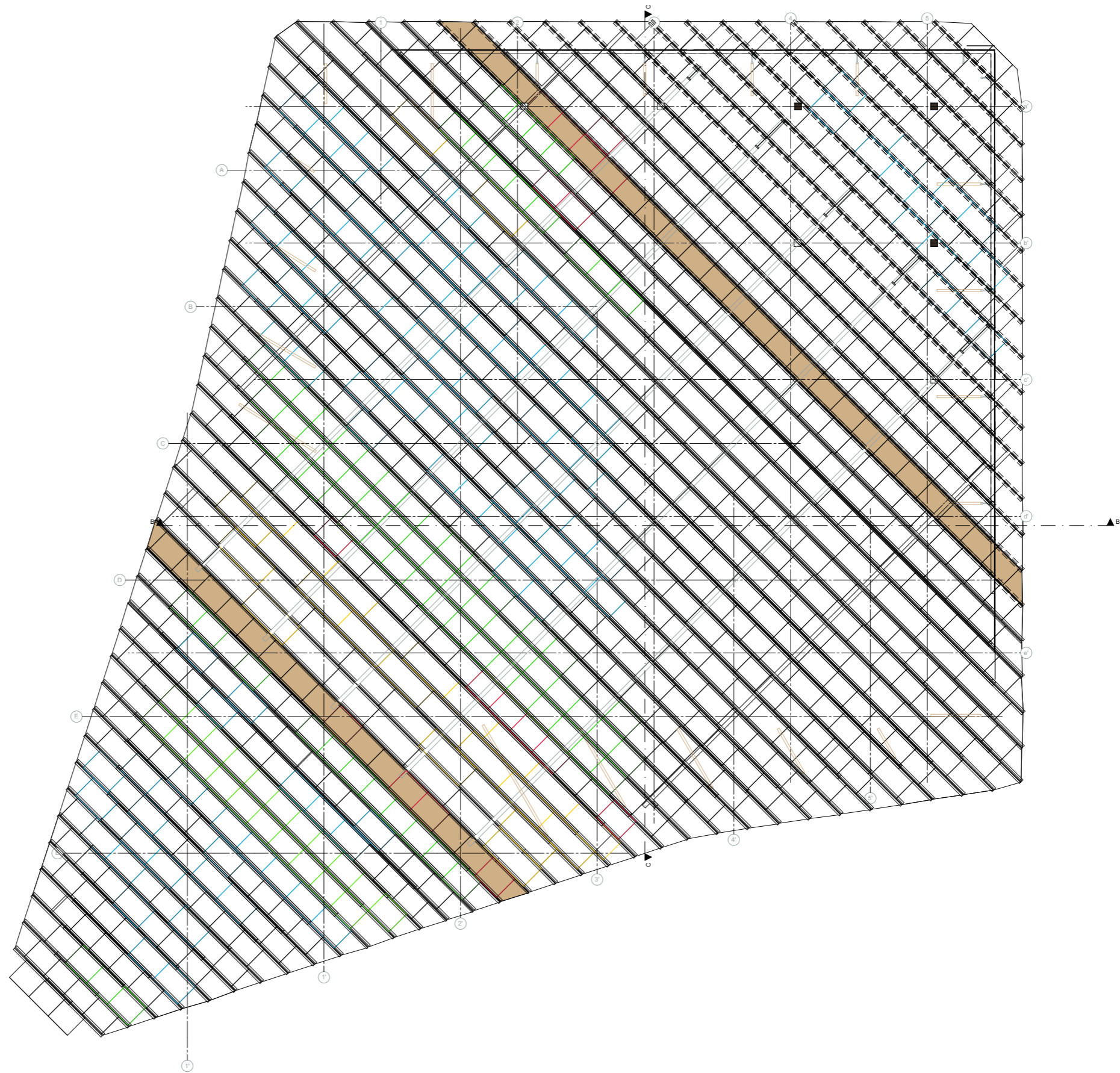
Experiencing circular architecture
set of drawings

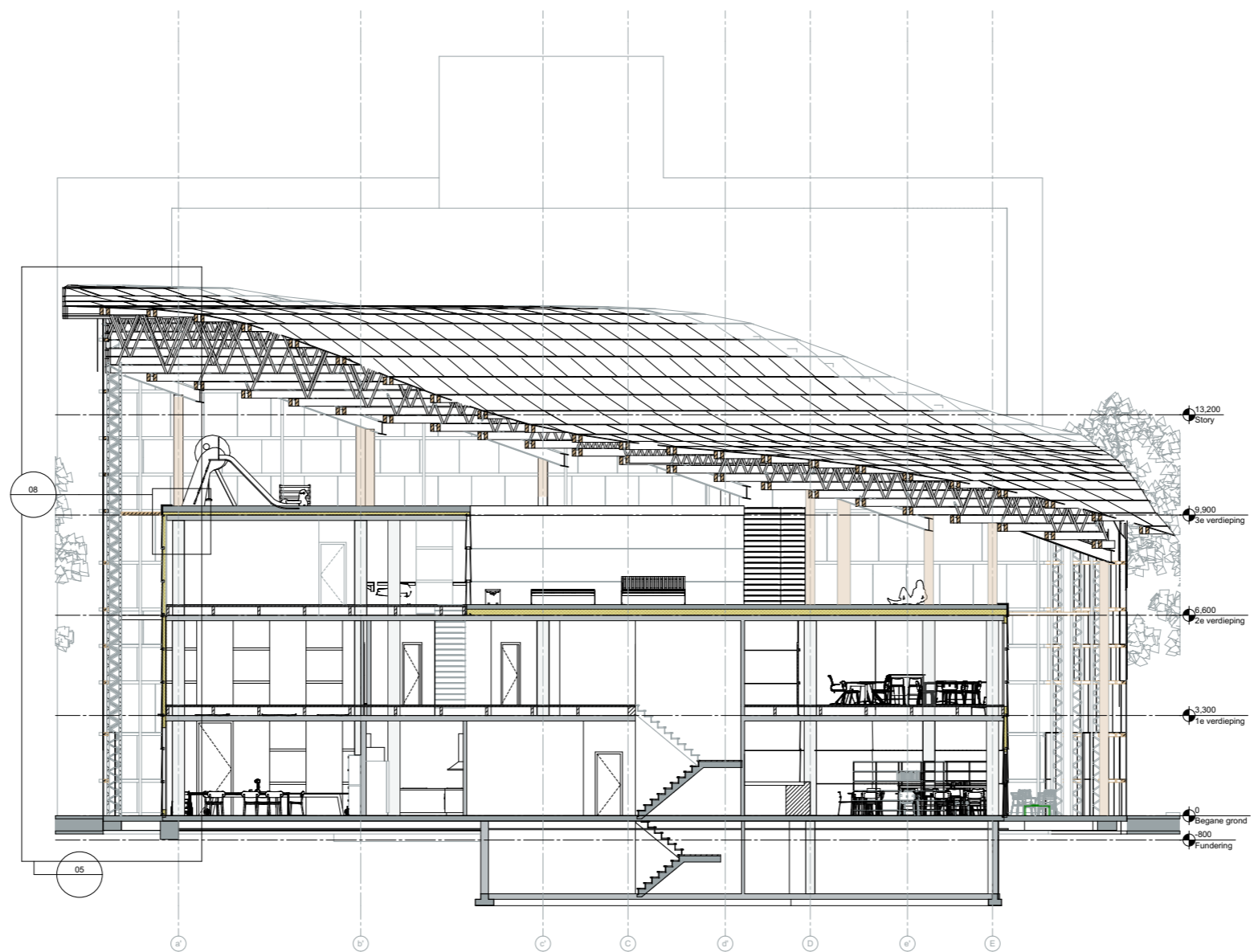




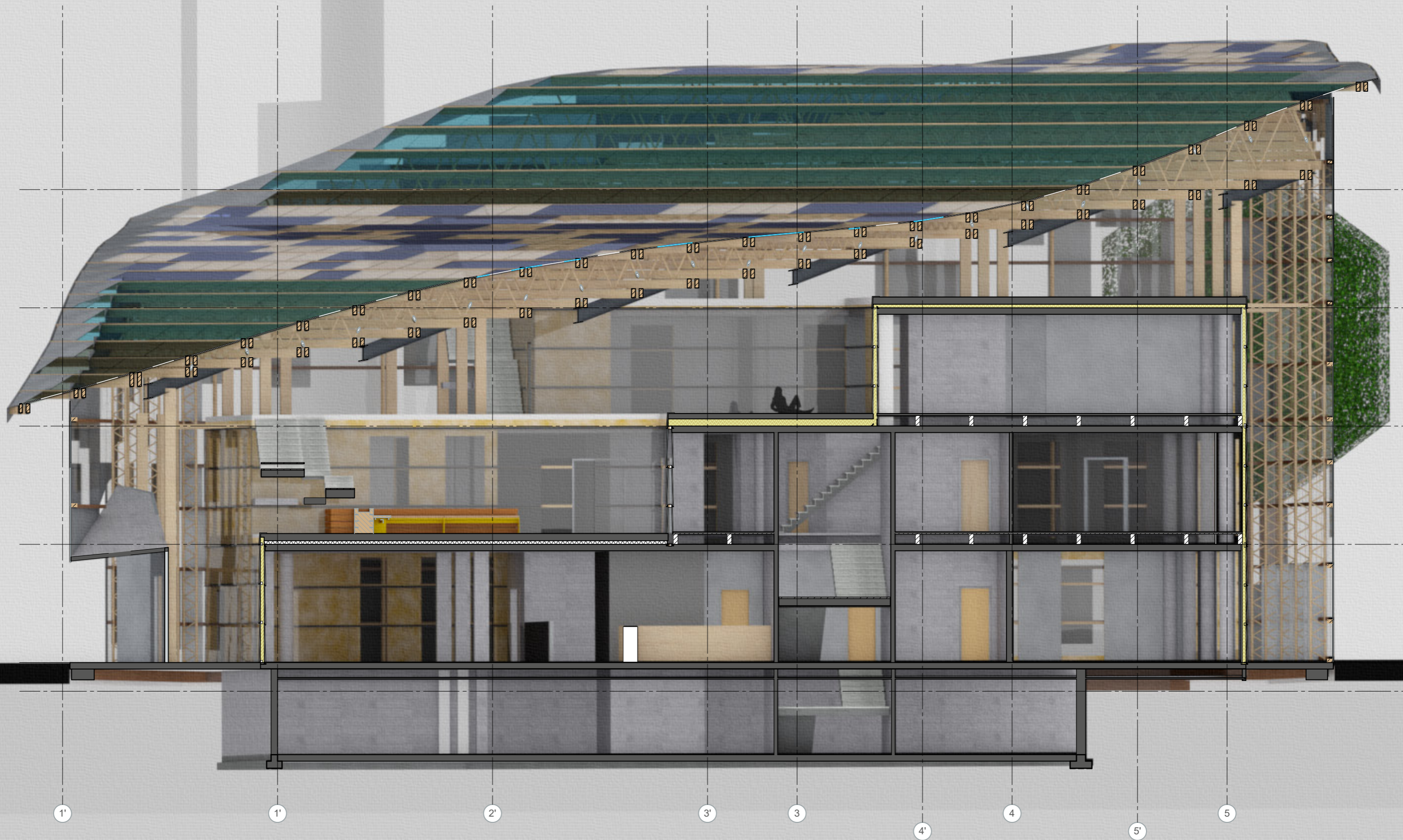




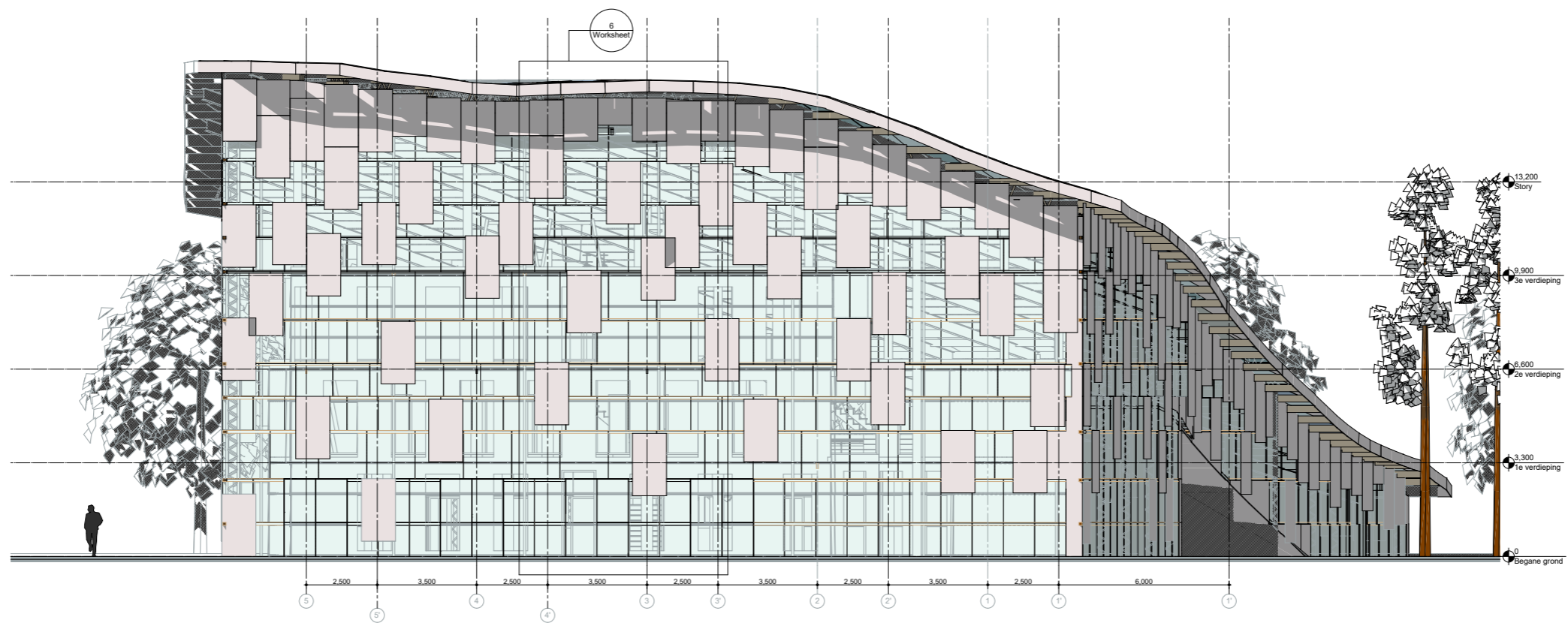




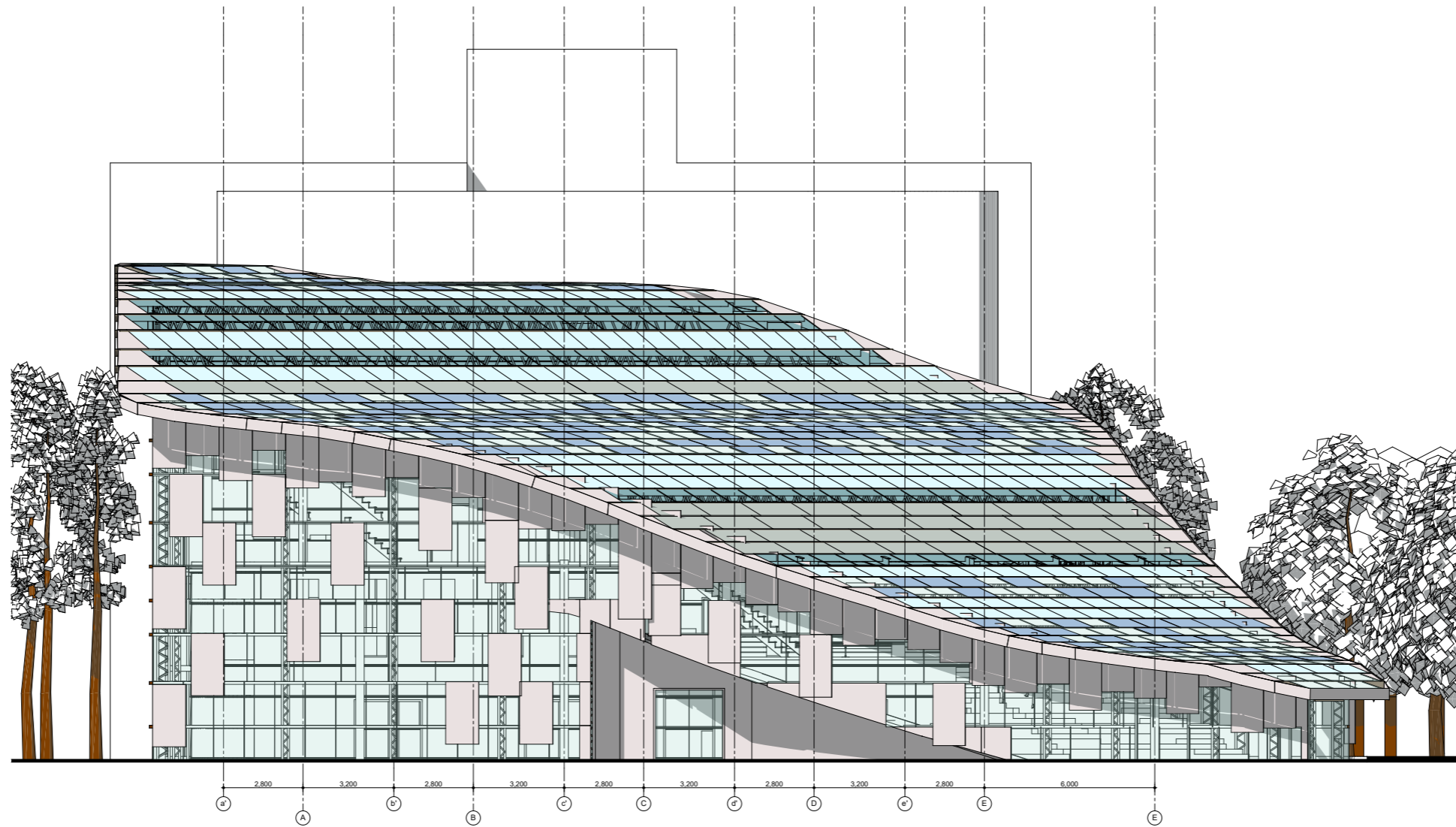
Section CC' | 1:200



Section BB' | 1:100

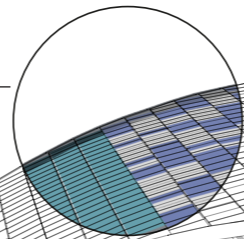


Elevation North Façade | Entrance | 1:200

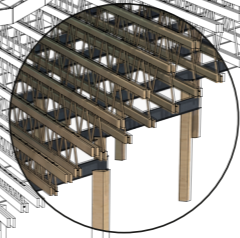


Elevation East Façade | 1:200

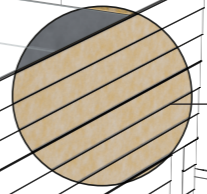
Reused glass panels



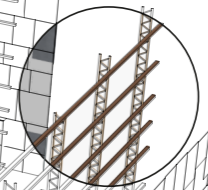
Additional wooden structure



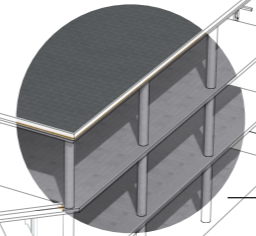
Reused insulation;
enclosed between panels



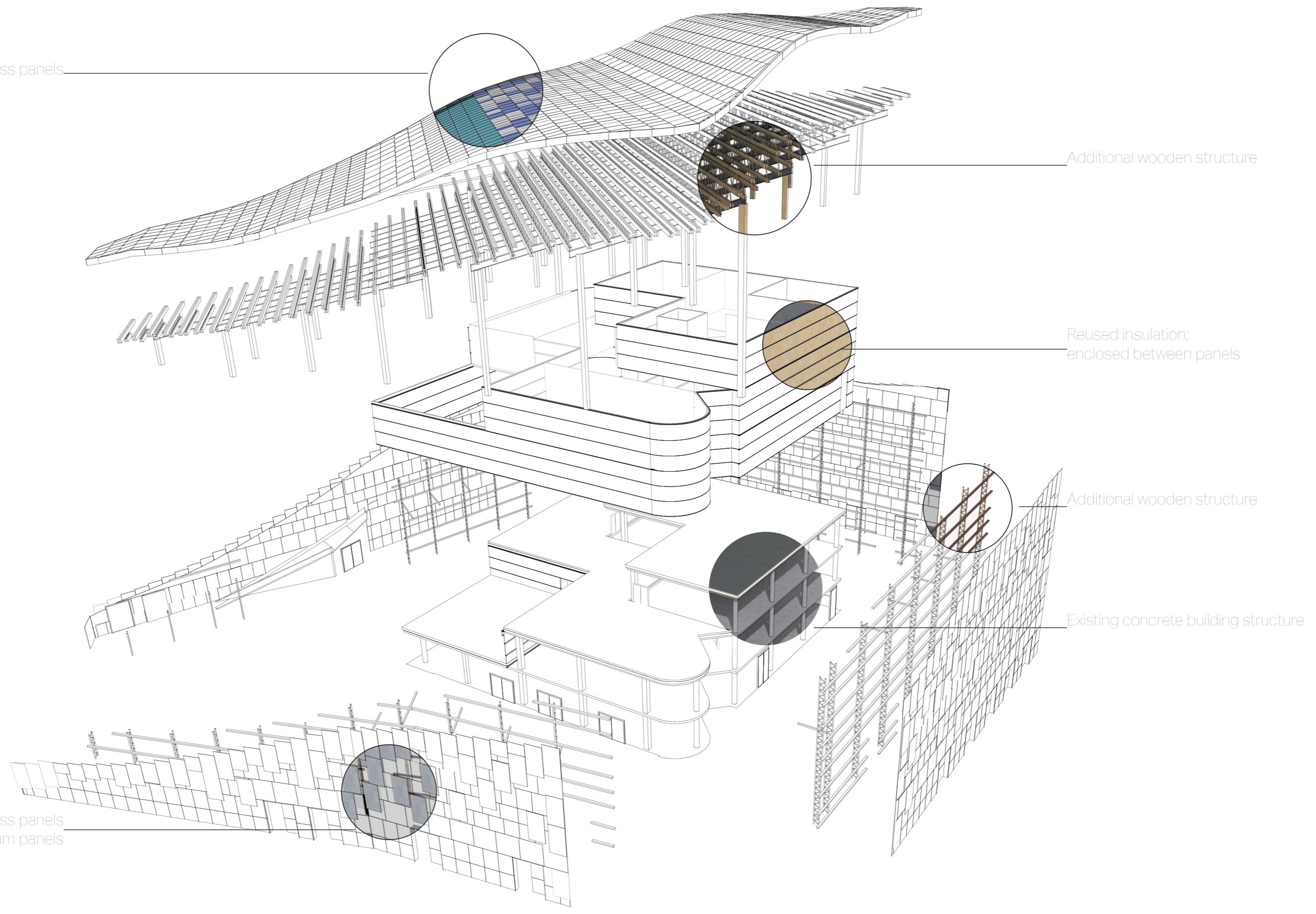
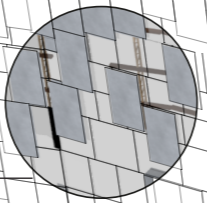
Additional wooden structure



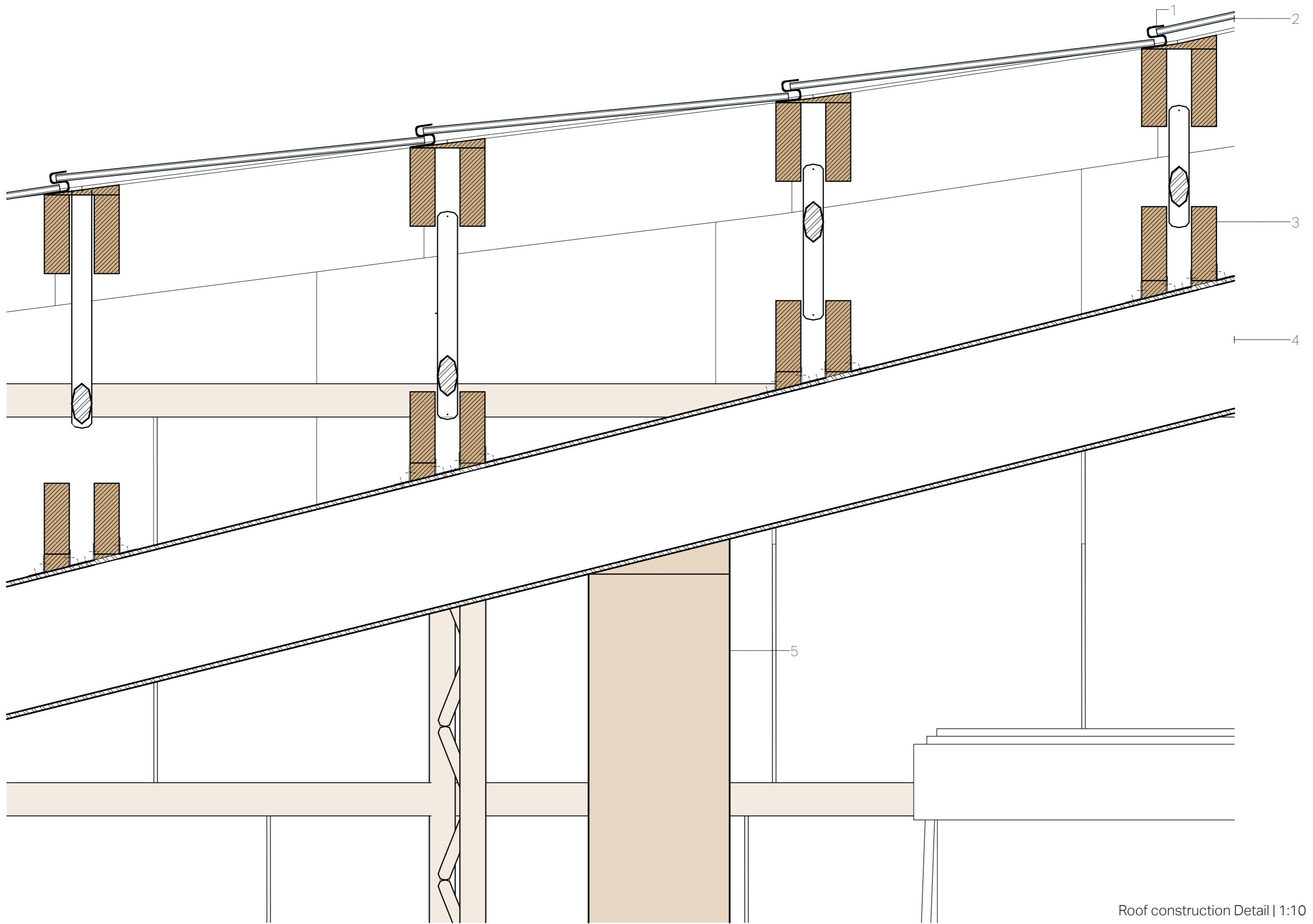
Existing concrete building structure

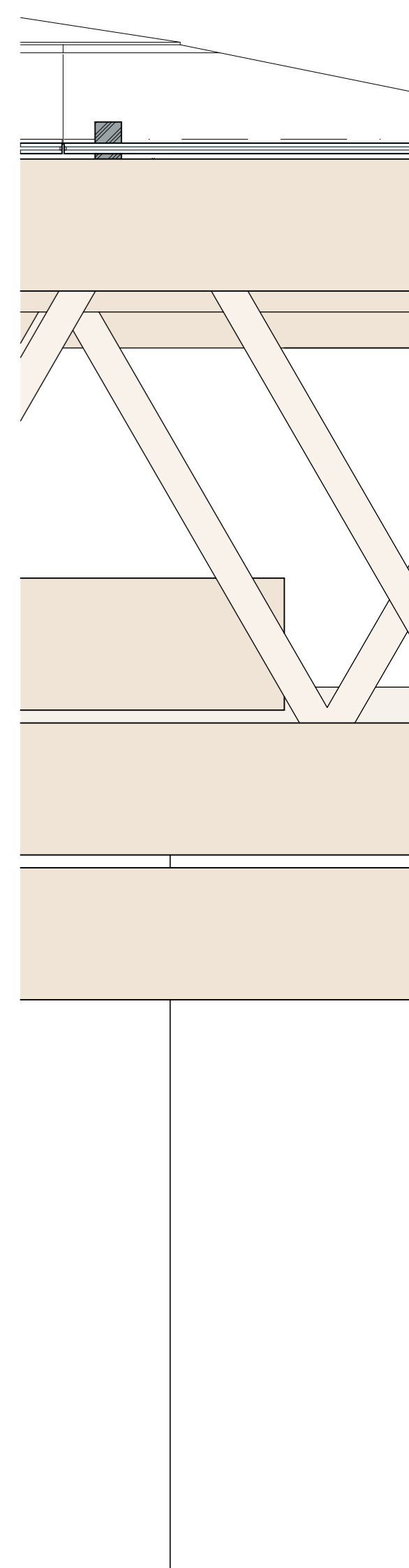


Reused glass panels
Reused aluminium panels

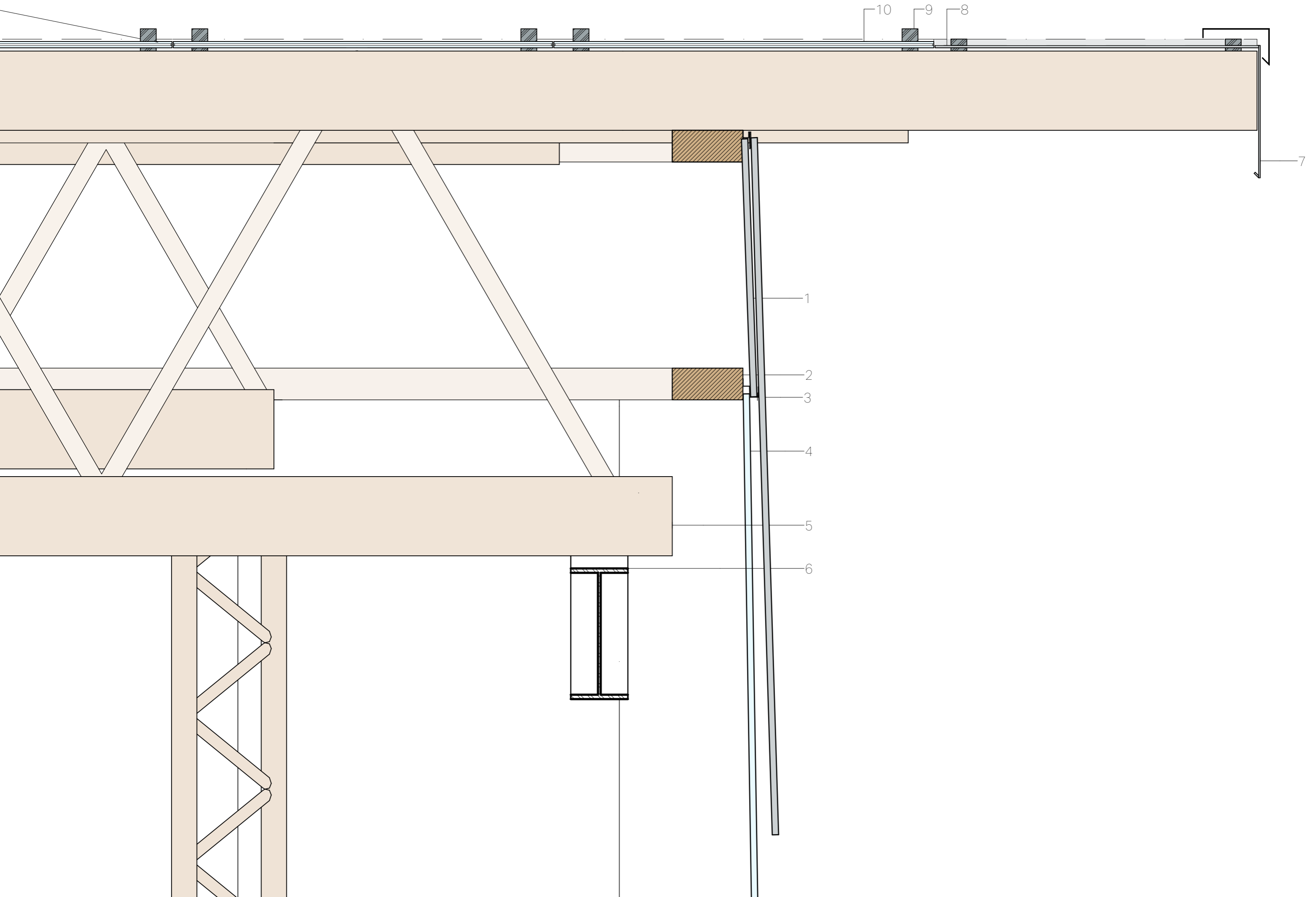


1. Tailor made aluminum profile to keep reused glass in place;
Stacking system
2. Reused glass panels; varying sizes of:
 - 1100x1200 mm
 - 1100x1540 mm
 - 1170x1300 mm
 - 1150x2500 mm
3. Wooden trusses
Varying in height according to curved glass roof top
4. Steel beam profile IPE 400
5. Wooden column 400x400 mm





1. Reused aluminum panel
2. Wooden beam
3. Customized system for panels
4. Reused glass panels
5. Wooden trusses
variable in height, according to roof top
6. Steel beam profile IPE 400
7. Roof edge, reused aluminum panels
8. Reused aluminum panel cutted to size
9. Customized system for reused panels
10. Reused glass panels



1. 20 mm vegetation layer
2. 140 mm substrate layer
3. 10 mm Xeroflor drainage mat
4. Xerocare water-regulating membrane
5. 200 mm insulation
6. Existing construction
180 mm casted concrete
7. New wooden column 400x400 mm
8. Seal anker
9. Existing construction
column 400x400 mm
10. Facade anker
11. Customized system for reused panels
12. Wooden support system glazed wall; 50x50 mm
13. Reused glazing panel

