

Document Version

Final published version

Licence

CC BY

Citation (APA)

Bianchi, S., Matteoni, M., Kim, K., Koniari, A. M., Koning, K., Luna-Navarro, A., Peng, Z., Silva, A., Overend, M., & More Authors (in press). Corrigendum to 'Resilience readiness levels for buildings: Establishing multi-hazard resilience metrics and rating systems' (International Journal of Disaster Risk Reduction, (2025), 128, C, (105746), (S2212420925005709), 10.1016/j.ijdr.2025.105746). *International Journal of Disaster Risk Reduction*, 139, Article 106129. <https://doi.org/10.1016/j.ijdr.2026.106129>

Important note

To cite this publication, please use the final published version (if applicable).
Please check the document version above.

Copyright

In case the licence states "Dutch Copyright Act (Article 25fa)", this publication was made available Green Open Access via the TU Delft Institutional Repository pursuant to Dutch Copyright Act (Article 25fa, the Taverne amendment). This provision does not affect copyright ownership.
Unless copyright is transferred by contract or statute, it remains with the copyright holder.

Sharing and reuse

Other than for strictly personal use, it is not permitted to download, forward or distribute the text or part of it, without the consent of the author(s) and/or copyright holder(s), unless the work is under an open content license such as Creative Commons.

Takedown policy

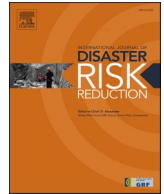
Please contact us and provide details if you believe this document breaches copyrights.
We will remove access to the work immediately and investigate your claim.



ELSEVIER

Contents lists available at ScienceDirect

International Journal of Disaster Risk Reduction

journal homepage: www.elsevier.com/locate/ijdr

Corrigendum



Corrigendum to ‘Resilience readiness levels for buildings: Establishing multi-hazard resilience metrics and rating systems’ [Int. J. Disaster Risk Reduct. 128 (2025) 105746]

Simona Bianchi^{a,*}, Michele Matteoni^b, Kyujin Kim^a, Anna Maria Koniari^a, Kyra Koning^c, Romulus Costache^d, Nicu Ciobotaru^d, Alessandra Luna-Navarro^a, Zhikai Peng^{a,c}, Jonathan Ciurlanti^e, Hamidreza Shahriari^f, Divyae Mittal^f, Evdokia Stavridou^f, Anna Silva^{a,c}, Michele Palmieri^e, Stefano Pampanin^b, Francesco Petrini^b, Mauro Overend^a

^a Delft University of Technology, 2628 BL, Delft, the Netherlands

^b Sapienza University of Rome, 00184, Rome, Italy

^c Amsterdam Institute for Advanced Metropolitan Solutions, 1018 JA, Amsterdam, the Netherlands

^d Transilvania University of Brasov, 500123, Brasov, Romania

^e Arup, 1043 CA, Amsterdam, the Netherlands

^f OMRT, 1013 AC, Amsterdam, the Netherlands

The authors wish to replace the flood hazard map in Fig. 11a with an updated map for the Acerra region. The legend has been revised to display only the minimum and maximum flood depth values.

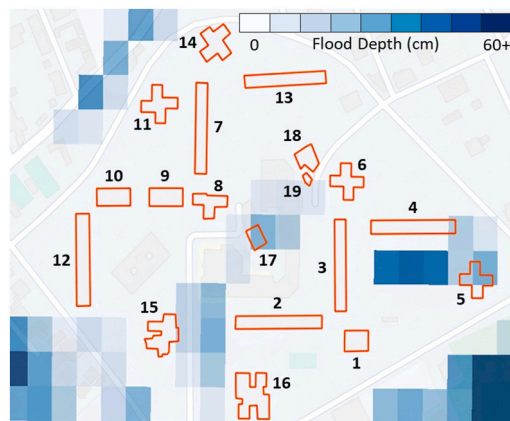


Fig. 11. (a) Flood hazard map for the Acerra region (Pluvial flooding - RCP 8.5 for year 2050, 50th Percentile - 1000 years return period) overlaid on the case study buildings (highlighted in orange).

DOI of original article: <https://doi.org/10.1016/j.ijdr.2025.105746>.

* Corresponding author.

E-mail address: s.bianchi@tudelft.nl (S. Bianchi).

<https://doi.org/10.1016/j.ijdr.2026.106129>

Available online 10 April 2026

2212-4209/© 2026 The Author(s). Published by Elsevier Ltd. All rights are reserved, including those for text and data mining, AI training, and similar technologies.