



“Rotterdam [...] feels unsafe.”

“I don’t go out after dark.”

“I avoid parts of the city because of frequent street harassment.”

“I try to walk only where other people are walking, so I am always surrounded by people — just in case you know?”

“I wouldn’t have felt safe without my boyfriend there.”

“I always have to be very conscious of people around me, [...] listen for footsteps.”

“Rotterdam is too anonymous and I don’t feel at home in the city.”

“Rotterdam [...] feels unsafe.”

“I don’t go out after dark.”

“I avoid parts of the city because of frequent street harassment.”

“I try to walk only where other people are walking, so I am always surrounded by people — just in case you know?”

“I wouldn’t have felt safe without my boyfriend there.”

“I always have to be very conscious of people around me, [...] listen for footsteps.”

“Rotterdam is too anonymous and I don’t feel at home in the city.”

# PERSONAL MOTIVATION



How can a gender-sensitive spatial design in Rotterdam South stimulate women's space claiming and public space participation?

# SPACE CLAIMING

Space claiming describes an act of micropolitics in which the right to the urban environment is “*mediated in tension with other users of the city*”(Beebeejaun, 2017, p.328)

# PUBLIC SPACE PARTICIPATION

Participation in the public space includes active acts of use (i.e. recreation, exploitation) as well as passive (i.e. passing through, transport). Public space consists of all places that are used or owned publicly without a profit motive and are accessible to all (UN-Habitat, 2018).

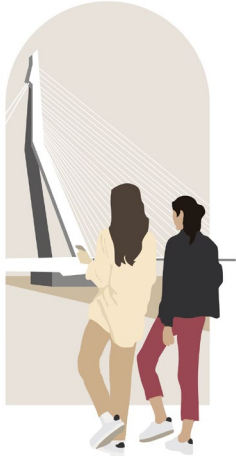
# GENDER

Gender describes certain social characteristics based on norms, behaviours and roles predetermined by the predominant societal culture. Gender does not equal biological sex, but biological sex does often lead to the assignment of certain gender roles. (World Health Organization, 2024).

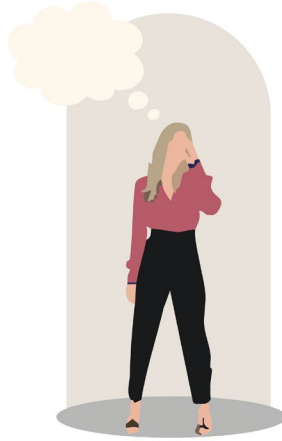
# METHODOLOGY



# SPACE CLAIMING AND GENDER



Walking practices



Memory



Power relations

# PUBLIC SPACE PARTICIPATION AND GENDER



Use



Perception

**THEORY VERSUS REALITY?**

# INTERVIEWEES



Sofie van Brunschot  
(Gebouwen door  
Vrouwen)



Veerle Clous  
(Chicks and the  
City)



Mama's garden  
(Mothers group in  
Bloemhof)



Nienke Riemersma  
(Stadsmarinier  
Bloemhof)

# RESEARCH OUTCOMES

# PRINCIPLES FOR THE DESIGN PROCESS



Diversity and Intersectionality



Participation



Maintenance



Support

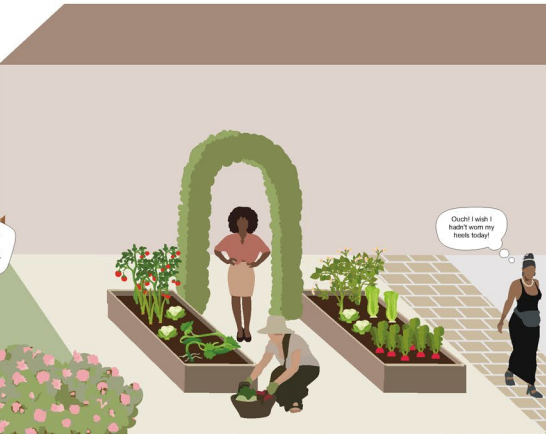
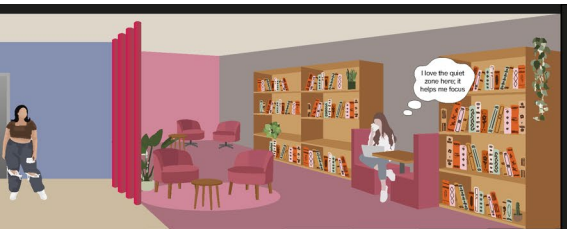
# DESIGN GUIDELINES



# DESIGN GUIDELINES



# DESIGN GUIDELINES



# PROGRAMMATIC GUIDELINES



Diversity and Intersectionality



Variety



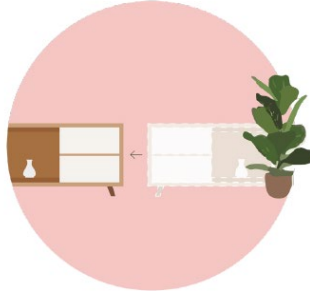
Programmed space



Cultural value



Code of conduct



Freely programmable space



Paid versus free programs



Accessibility

# RECOMMENDED SITE

1. Oversight and overview
2. Reachable
3. Close to (target) neighbourhood
4. Safe reputation
5. Not right beside a park or square
6. Traffic control: separated infrastructure and parking for bikes, scooters etc.
7. Nearby amenities

# RECOMMENDED BUILDING TYPE



Building over open space



Semi-public over public or private



Large or multiple smaller ones

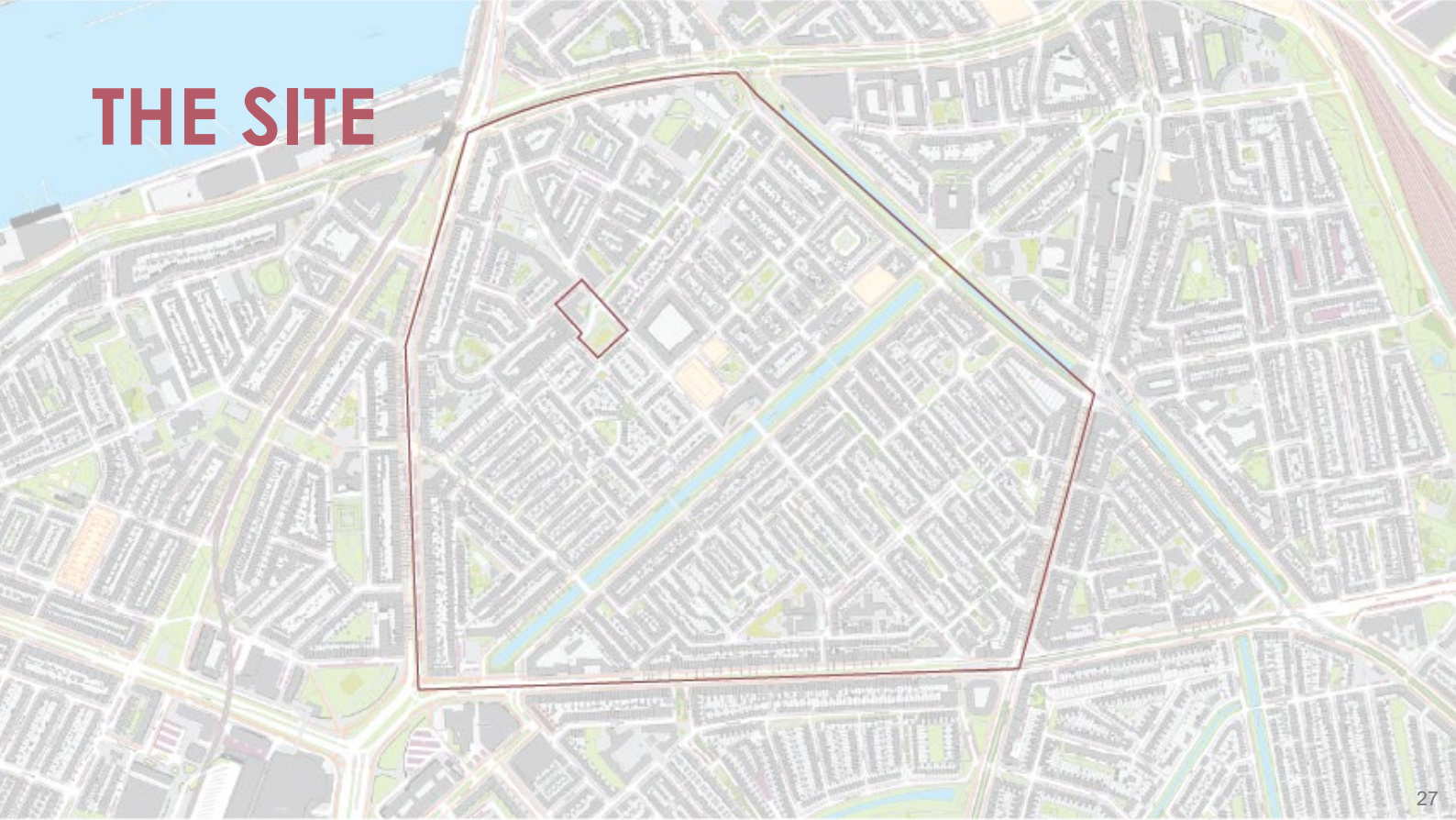
**HOW CAN WE TRANSLATE THESE  
PRINCIPLES AND GUIDELINES TO A  
SPATIAL DESIGN?**

**NEIGHBOURHOOD CENTRE  
MAGNOLIA**

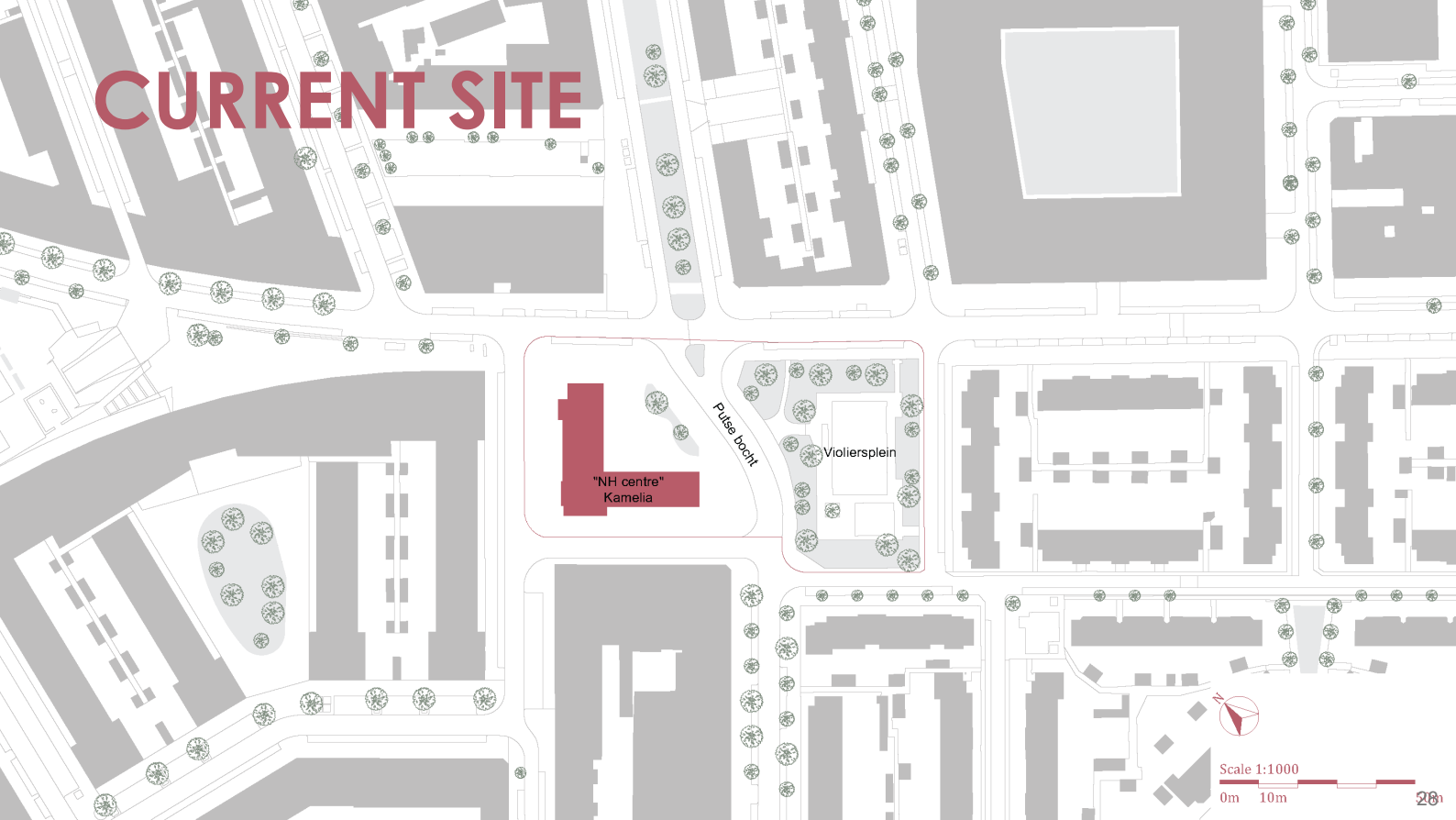
# BLOEMHOF



# THE SITE



# CURRENT SITE



"NH centre"  
Kamelia

Pulse bocht

Violiërsplein



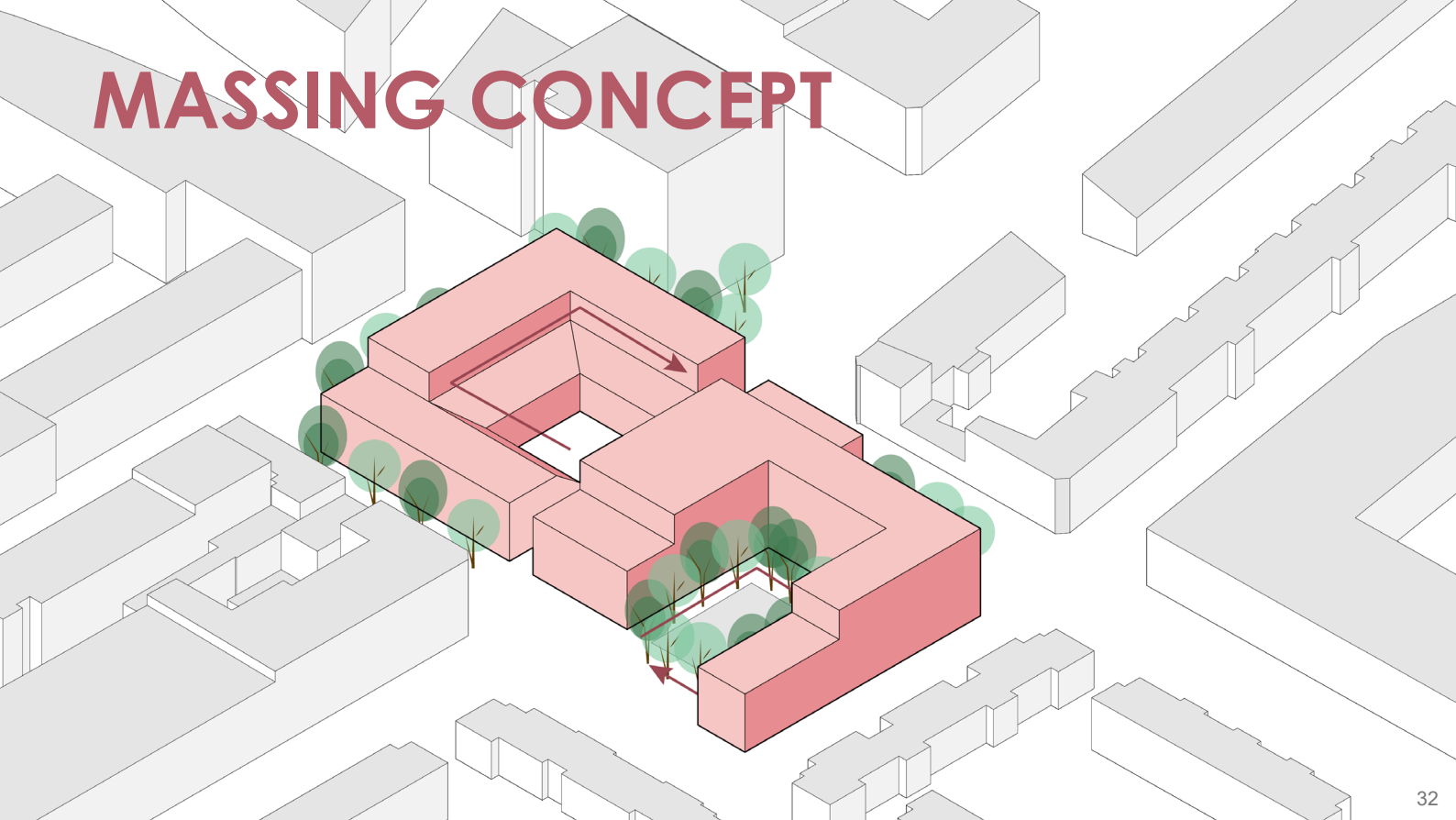
Scale 1:1000

0m 10m

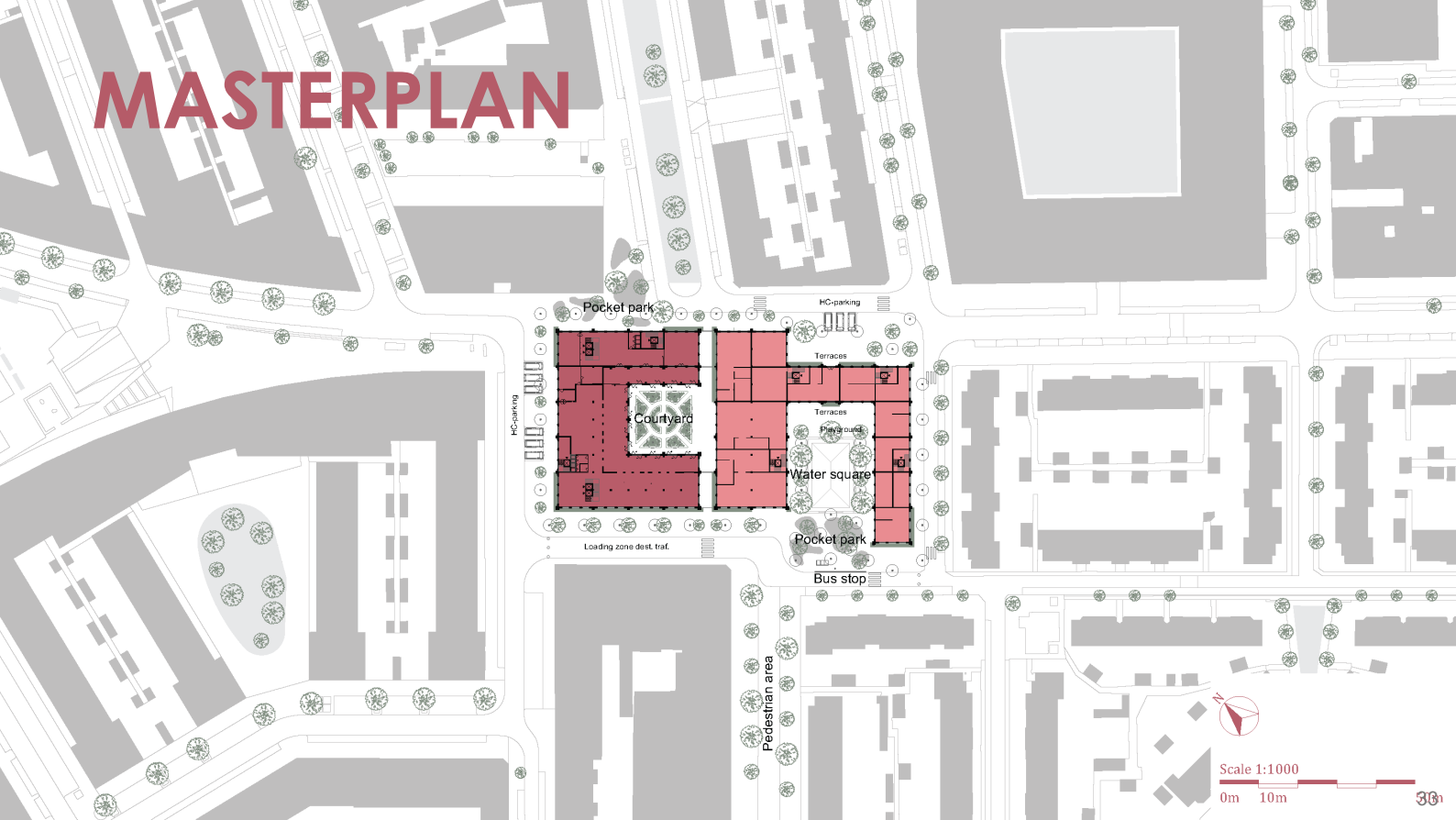


**DESIGN 'MAGNOLIA'**

# MASSING CONCEPT



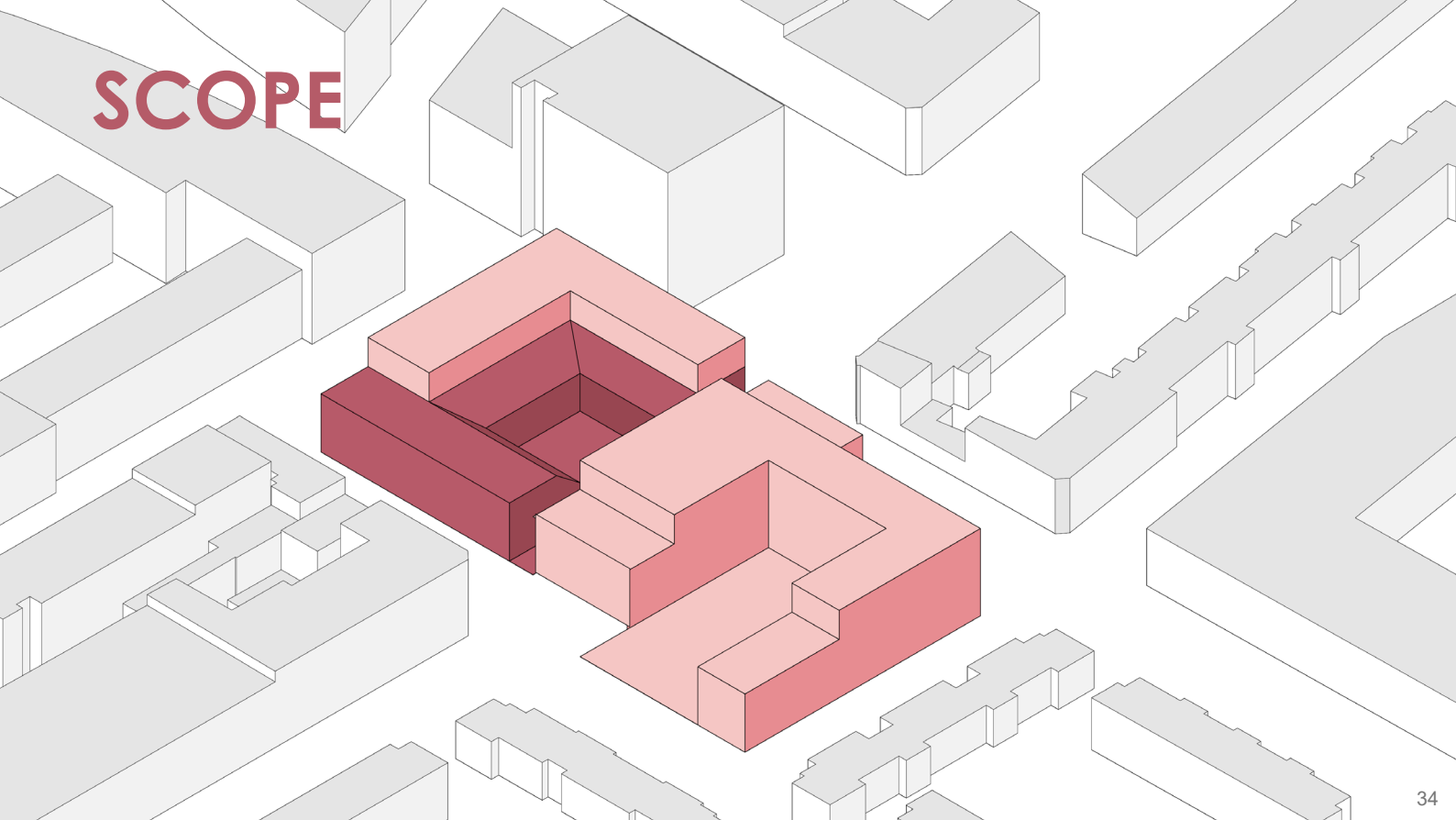
# MASTERPLAN



Scale 1:1000

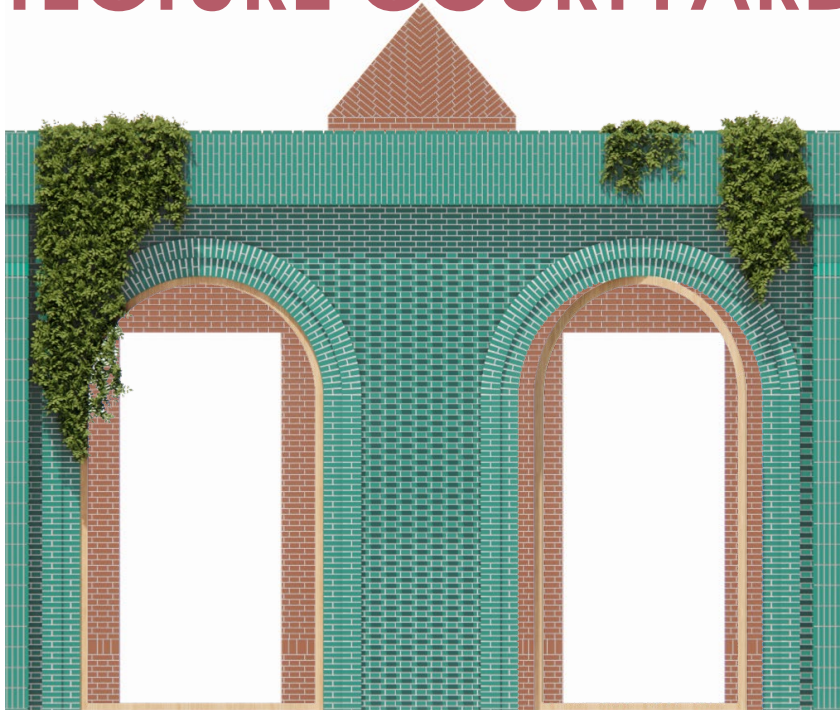
0m 10m

# SCOPE





# ARCHITECTURE COURTYARD



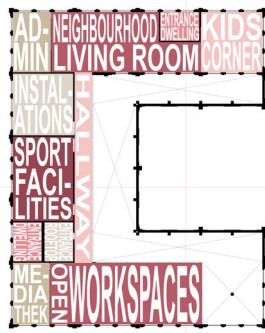
# ARCHITECTURE STREET SIDE



# BUILDING PROGRAM



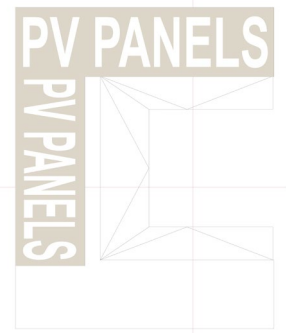
Ground floor



First floor



Second floor



Rooftop

# PRINCIPLES FOR THE DESIGN PROCESS

# INTERVIEWEES



Sofie van Brunschot  
(Gebouwen door  
Vrouwen)



Veerle Clous  
(Chicks and the  
City)

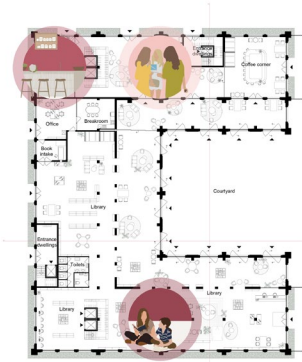


Mama's garden  
(Mothers group in  
Bloemhof)

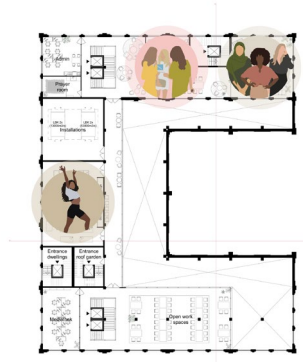


Nienke Riemersma  
(Stadsmarinier  
Bloemhof)

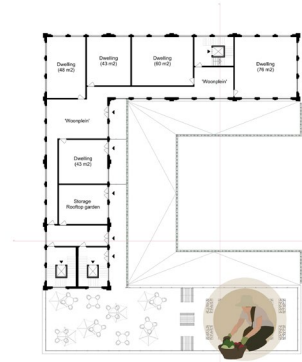
# NEIGHBOURHOOD INITIATIVES



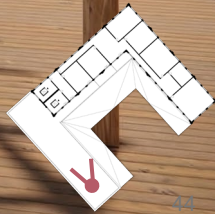
Ground floor



First floor

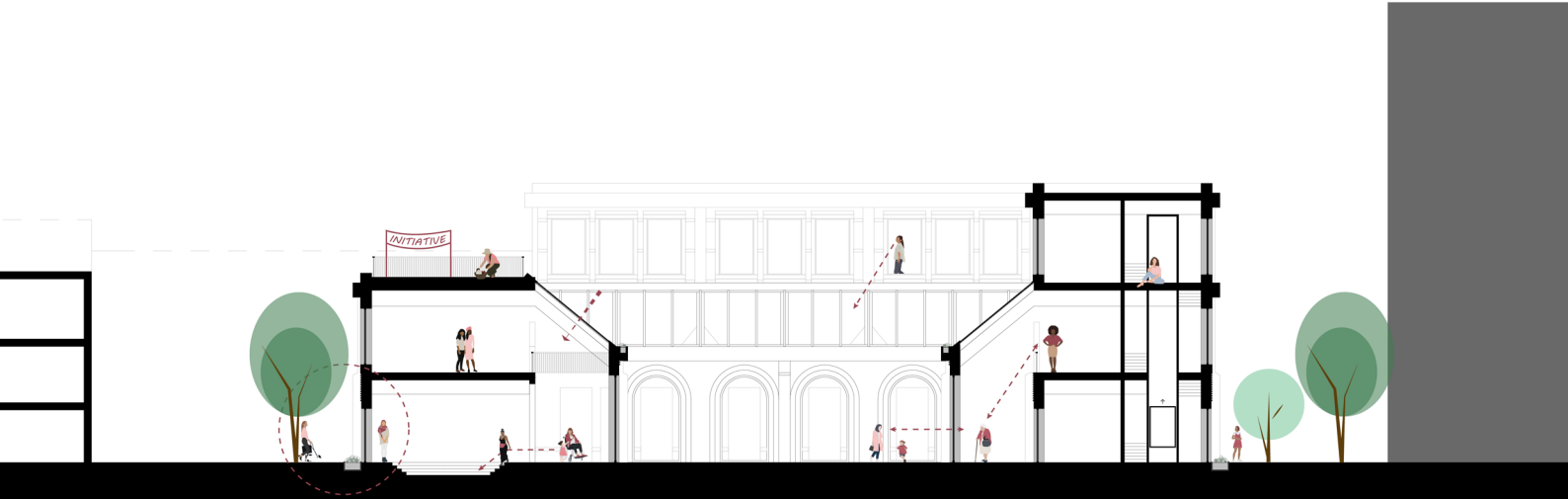


Second floor

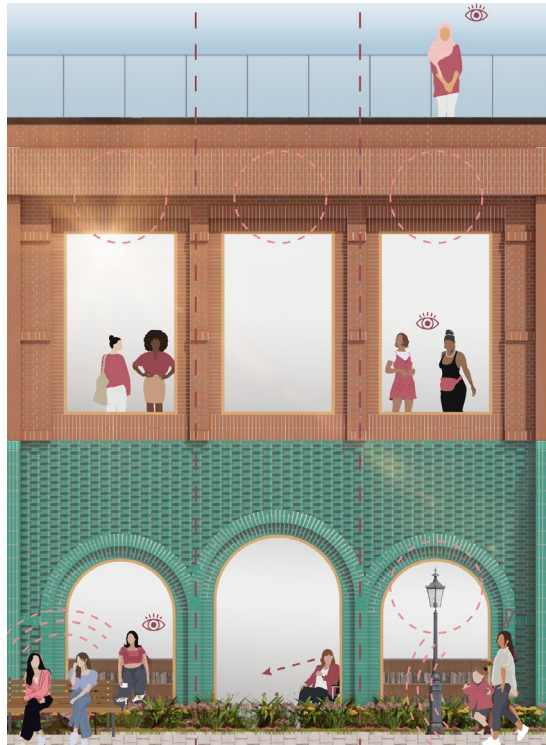


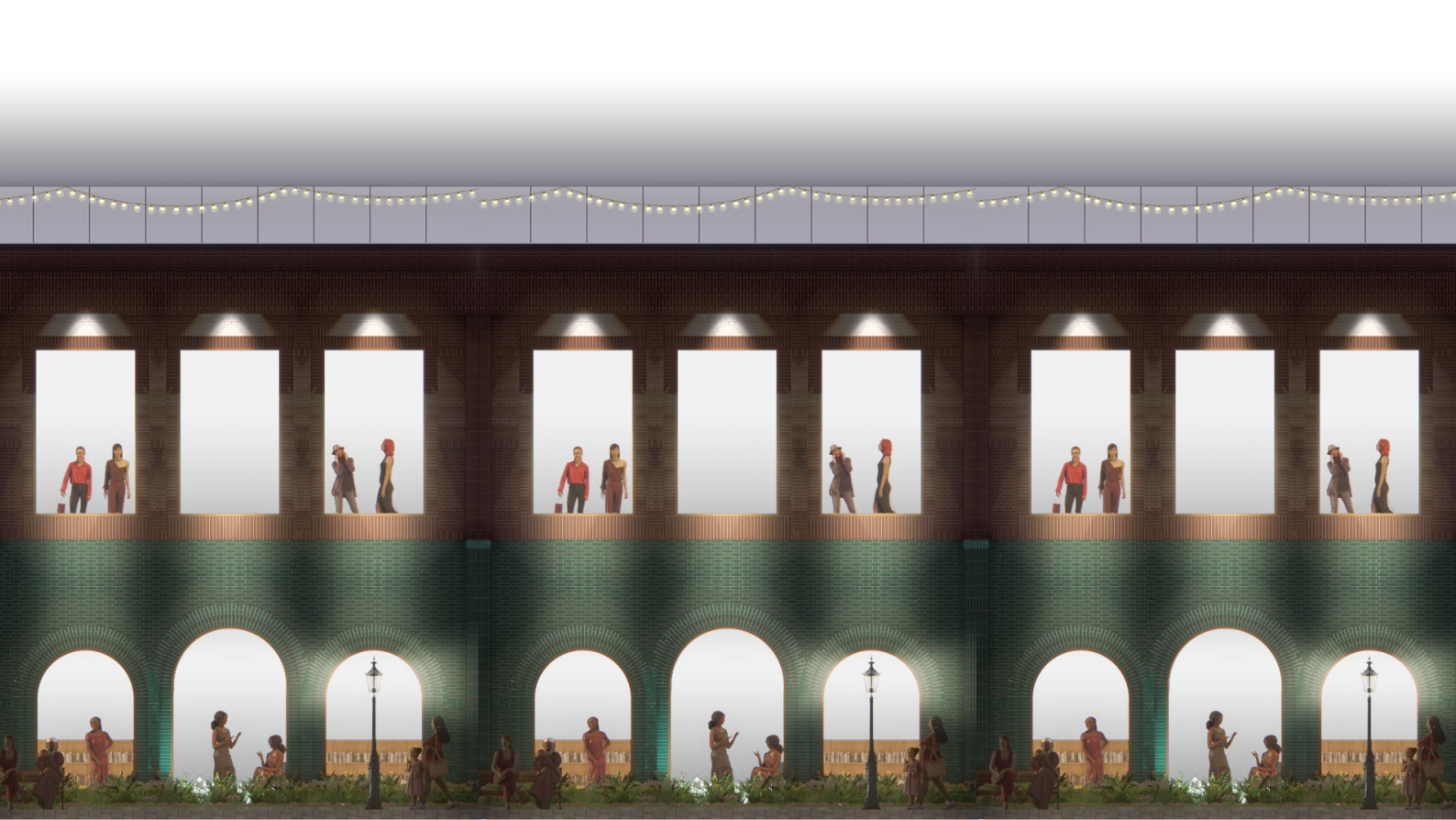
# DESIGN GUIDELINES

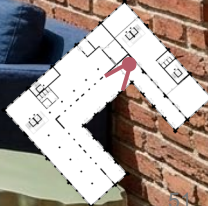
# OVERVIEWS AND SUPERVISION



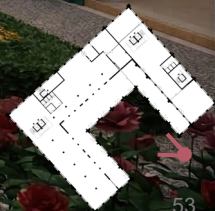
# ACTIVATE THE PLINTH



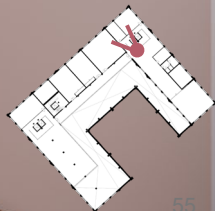


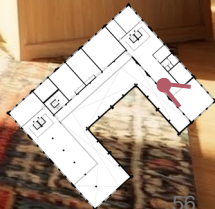


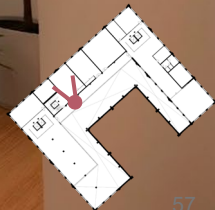


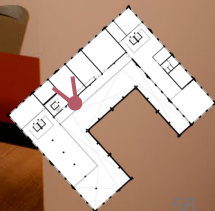


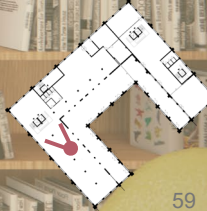
# PROGRAMMATIC DESIGN GUIDELINES

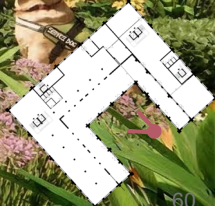


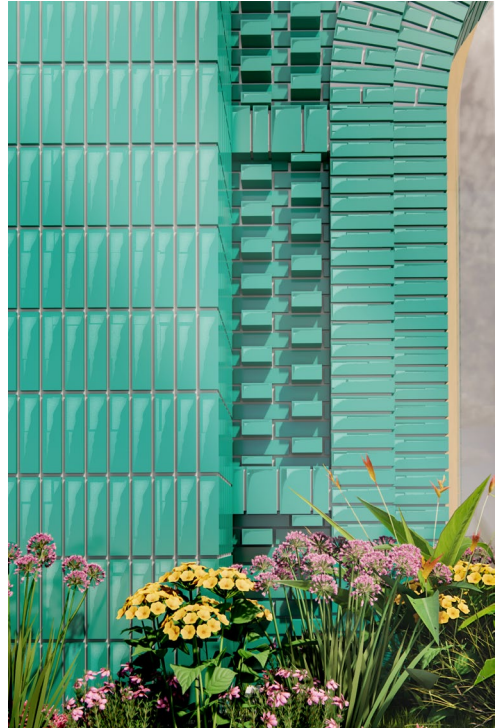






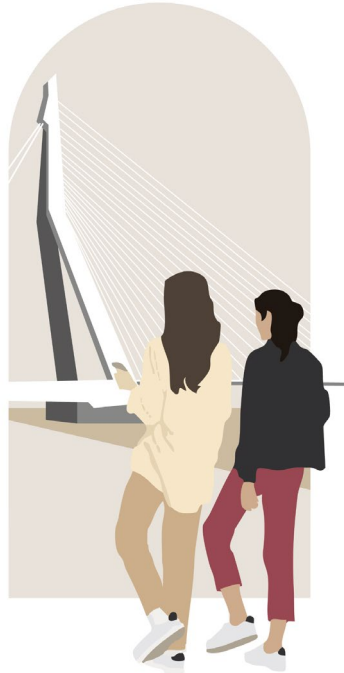






# **SOCIAL IMPACT PROJECT**

# ...ON A SMALLER SCALE



# ...ON A LARGER SCALE



# SPACES OF POWER

Addressing women's space claiming and public  
space participation through gender-sensitive design  
in Rotterdam South

