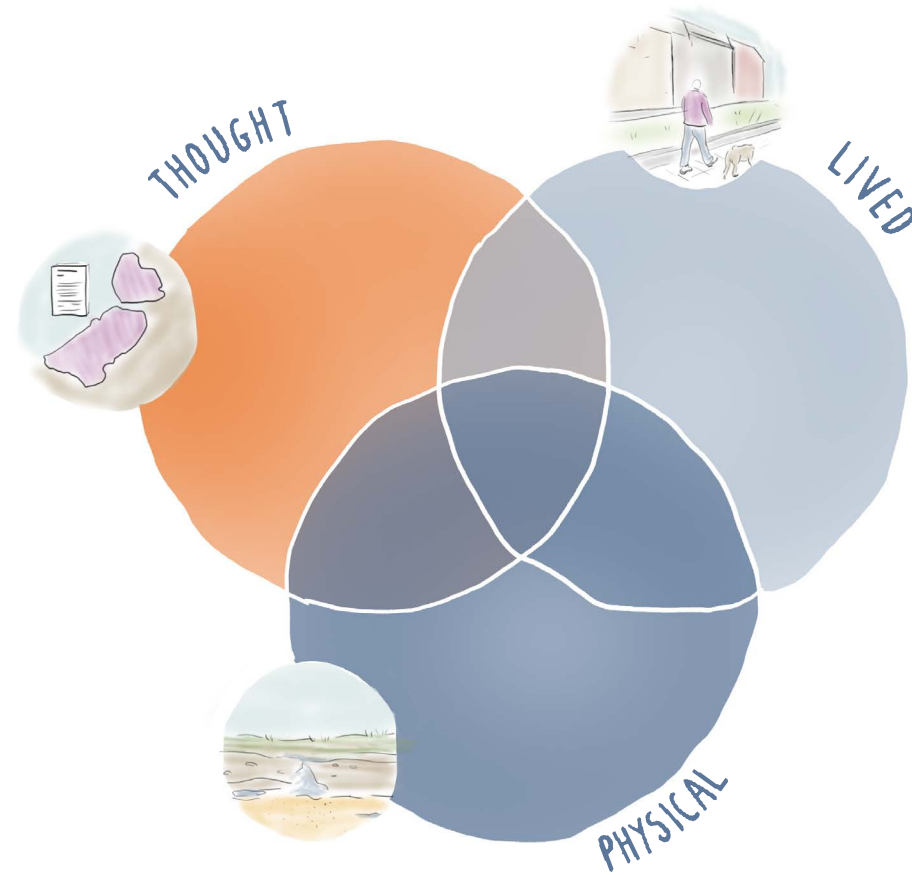
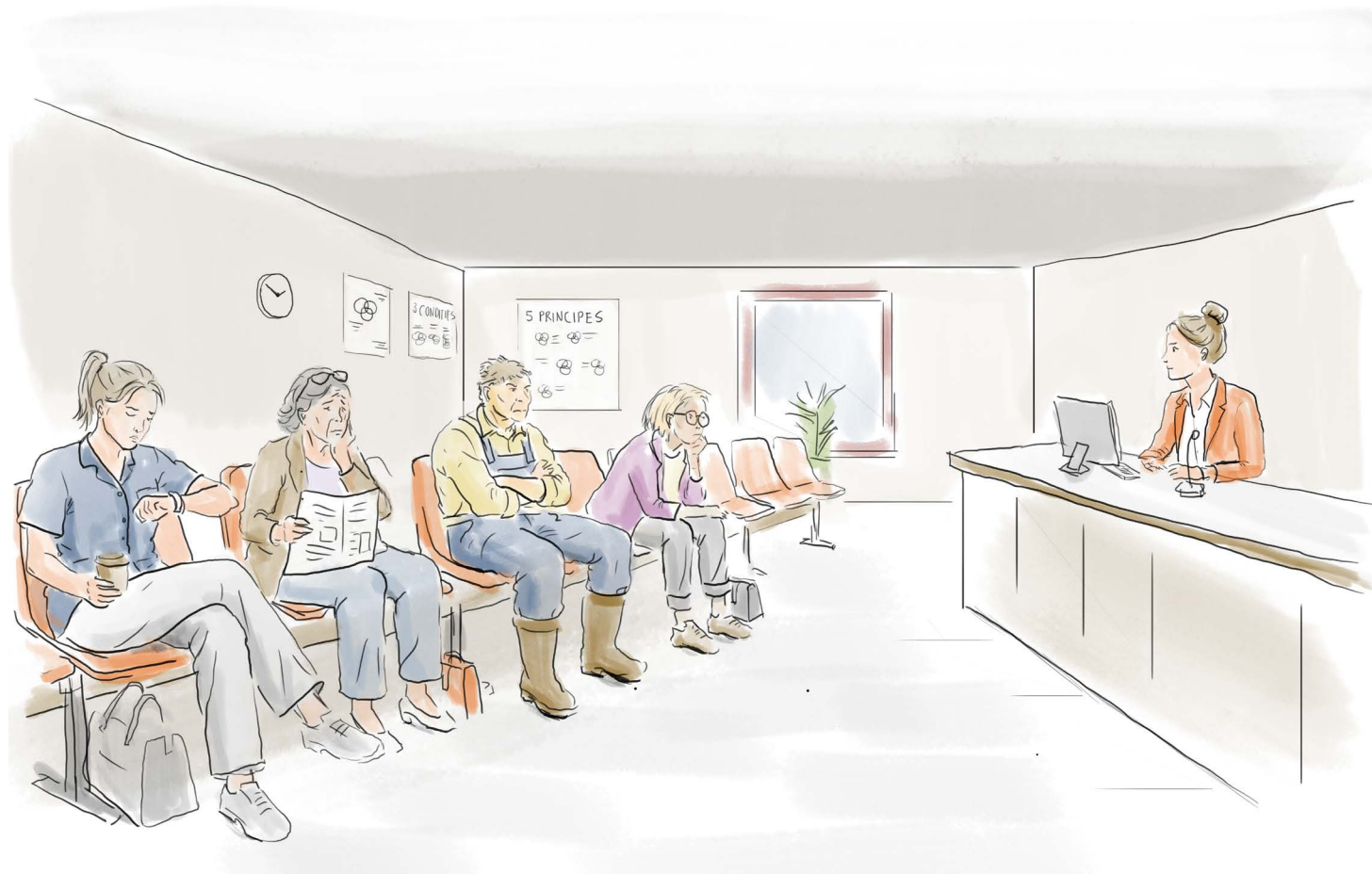


Towards a friction-guided planning doctrine

Op weg naar een planningsdoctrine geleid door frictie

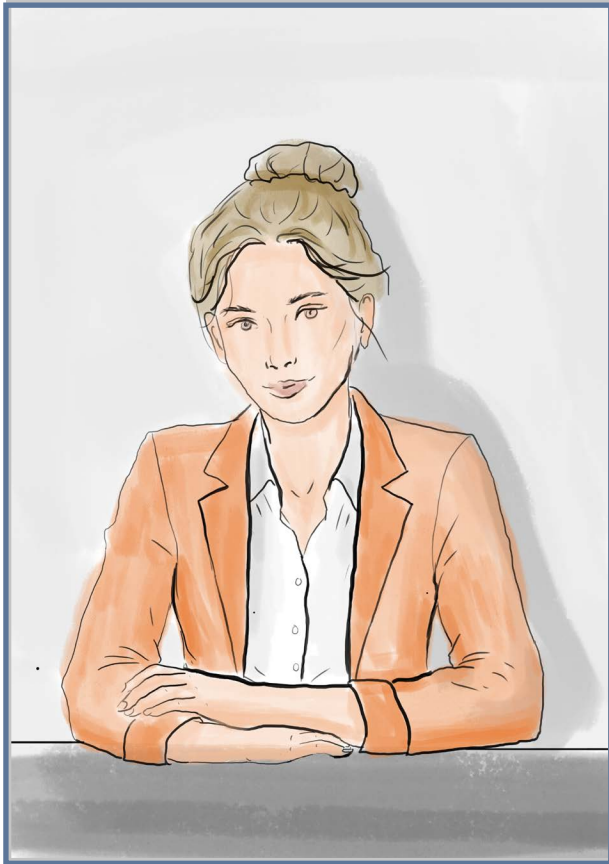


Juliette Feldbrugge
5313473
Thesis Presentation



Anne-Marie

Ombudsvrouw van Ruimtelijke Wrijving



Naam:

Anne-Marie

Functie:

Ombudsvrouw van ruimtelijke wrijving

What kind of urbanist do *you* want to become?

Geschiedenis van ruimtelijke ordening

Maakbaarheid

Randstad

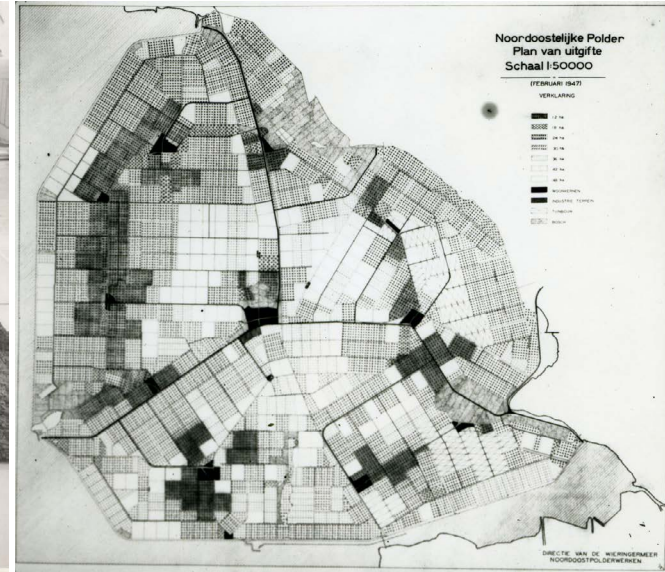
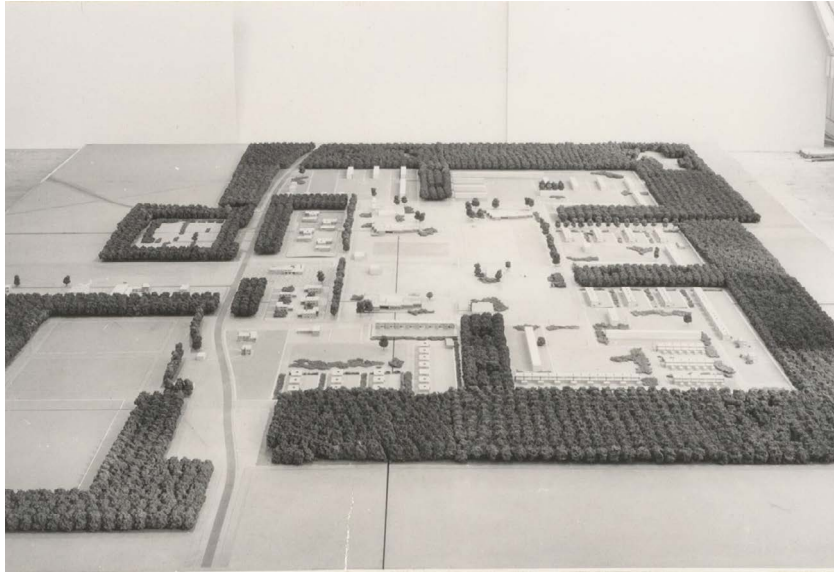


het Groene hart



Geschiedenis van ruimtelijke ordening

Rule and order

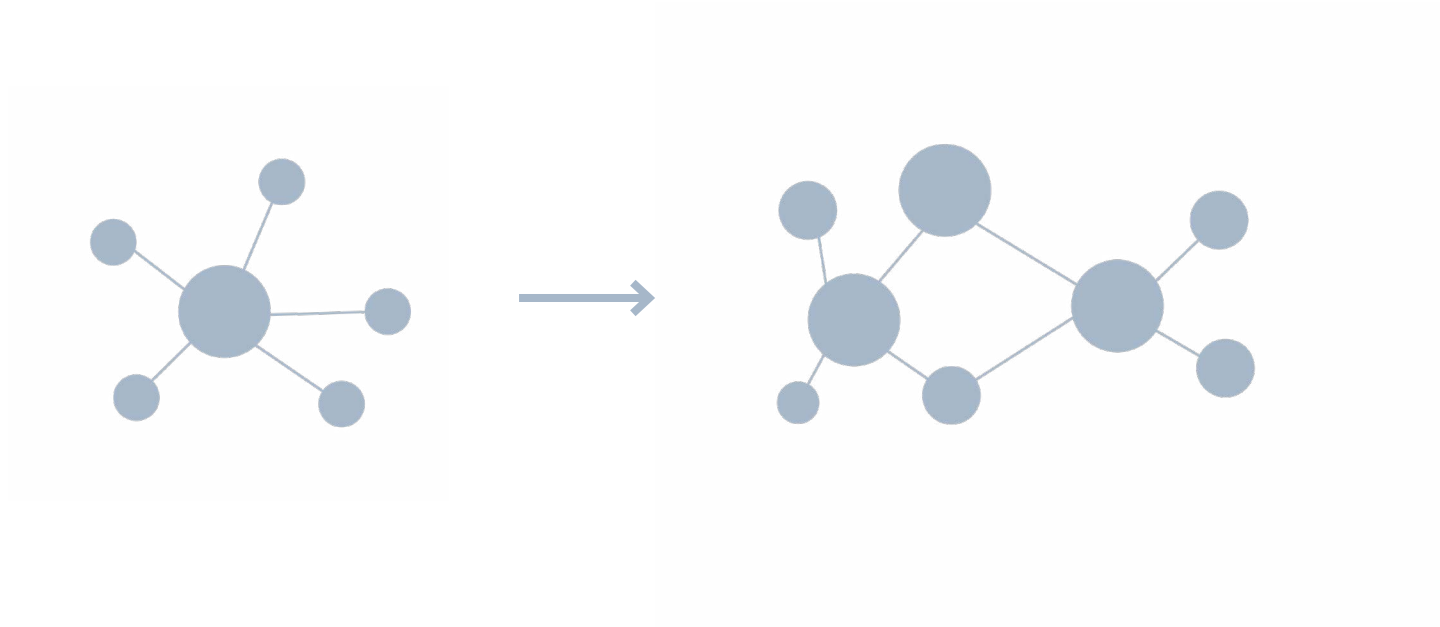


“Dutch planning carries a heavy burden: the promise to achieve ‘rule and order’ by means of plans, not ad-hoc decision-making.”

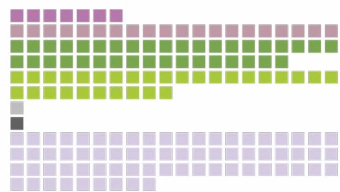
Faludi & van der Valk, 1994, p. 252

Decentralisatie

2000-2026

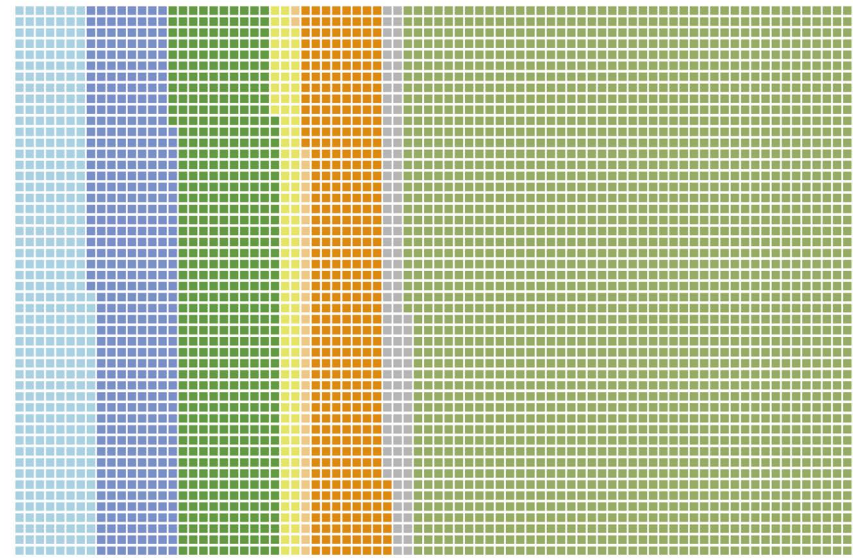
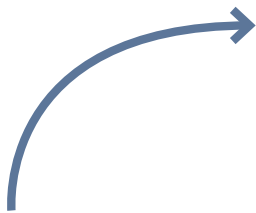


Huidige ruimtelijke claims voor NL:



Past niet...

- Binnenstedelijke woningen (50% nationale woningbouwopgave)
- Buitenstedelijke woningen (50% nationale woningbouwopgave)
- Nieuw bos (national bossenstrategie)
- Voltoeing Natuurnetwerk Nederland
- Defensie terrein (Nationaal Programma Ruimte voor Defensie)
- Datacenters (Bron??)
- Energie (PBL gemiddelde bandbreedte verkenning scenario)



Huidige land functies in ha (x.100) Based on CBS (2024)

- Transport
- Built environment
- Semi-built environment
- Recreation
- Agriculture
- Woodland and nature
- Inland water
- Tidal water

Relevantie

Oproep voor een nieuw (herziene) planning doctrine

*“Tevens horen we de laatste jaren alom de roep dat er **richting** nodig is en er **keuzes** gemaakt moeten worden.*

...

*Kan een (herziene) planningdoctrine ons daarbij helpen en zo ja, **hoe kom je tot een doctrine en hoe zou zo’n doctrine dan moeten luiden?**”*

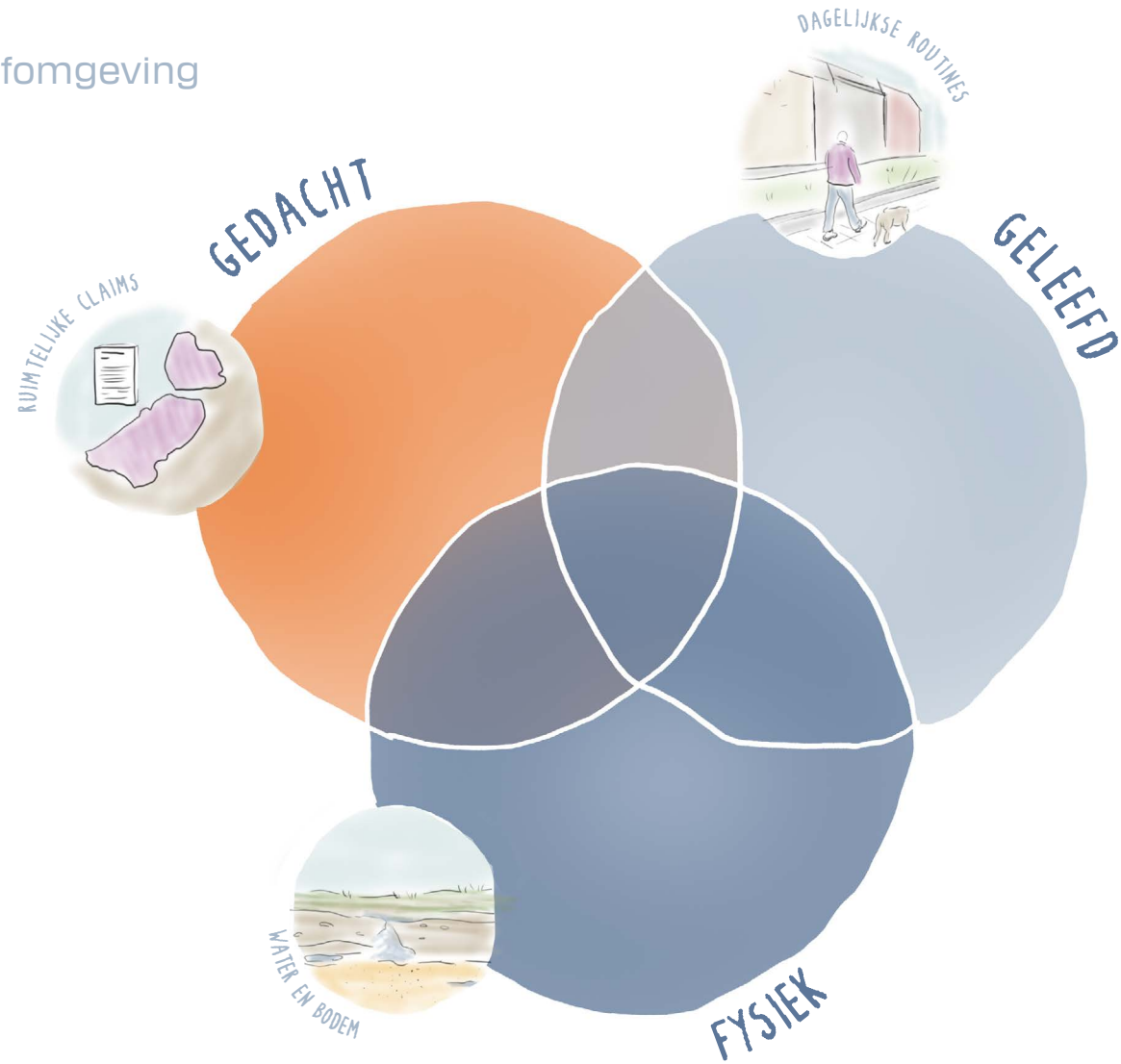
Verdaas, 2026, p. 3, translation by author

*“.. what we can rationally consider are **not alternatives**, but whether doctrine is **sufficiently open.**”*

Faludi & van der Valk, 1994, p. 246

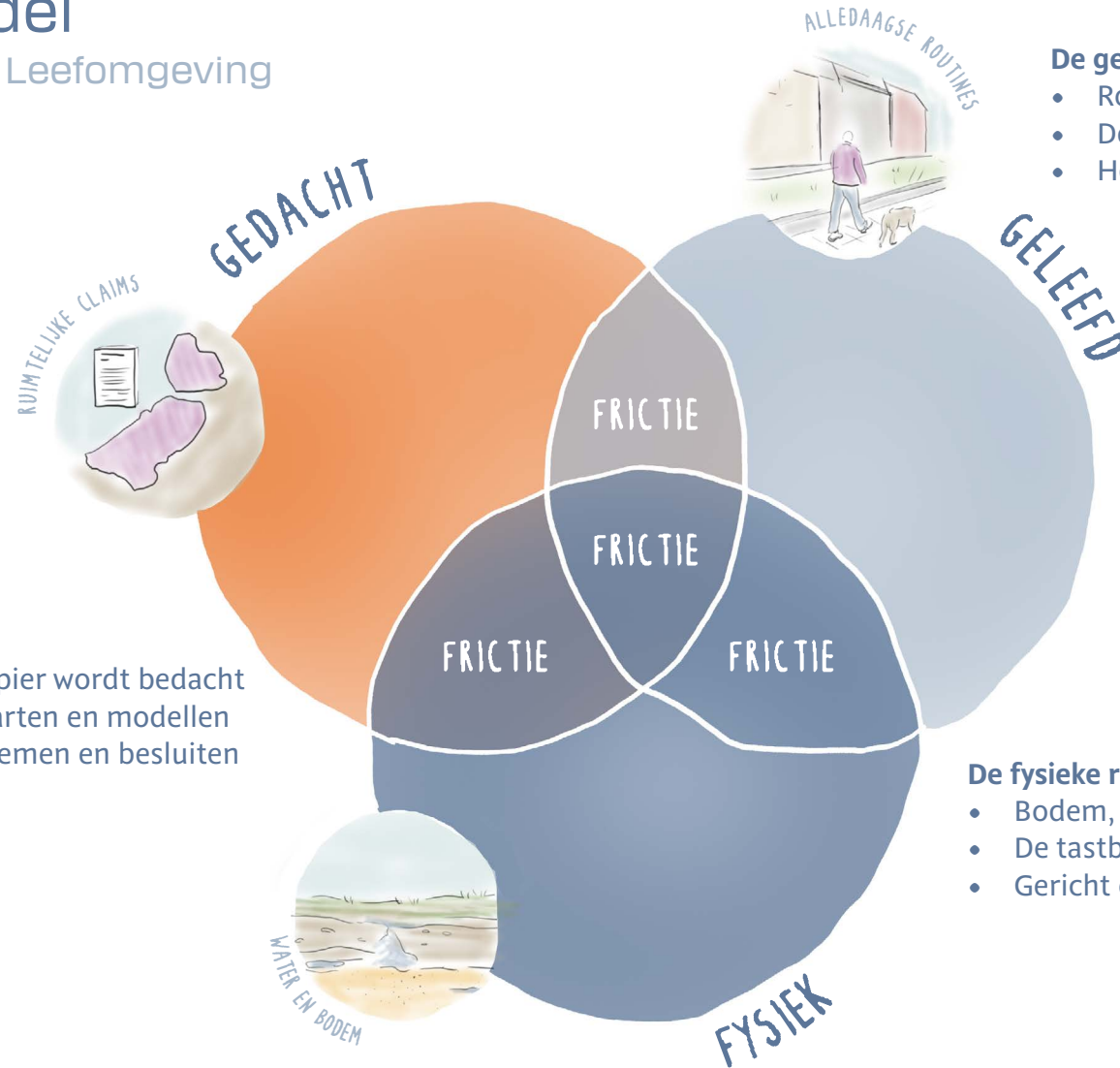
Drieruimtenmodel

Door Plan Bureau van de Leefomgeving



Drieruimtenmodel

Door Plan Bureau van de Leefomgeving



De gedachte ruimte

- Ruimte zoals die op papier wordt bedacht
- Via plannen, beleid, kaarten en modellen
- Gericht op doelen, systemen en besluiten

De geleefde ruimte

- Routines, herinneringen en verbondenheit
- De sociale en emotionele betekenis van ruimte
- Hoe mensen ruimte gebruiken en waarderen

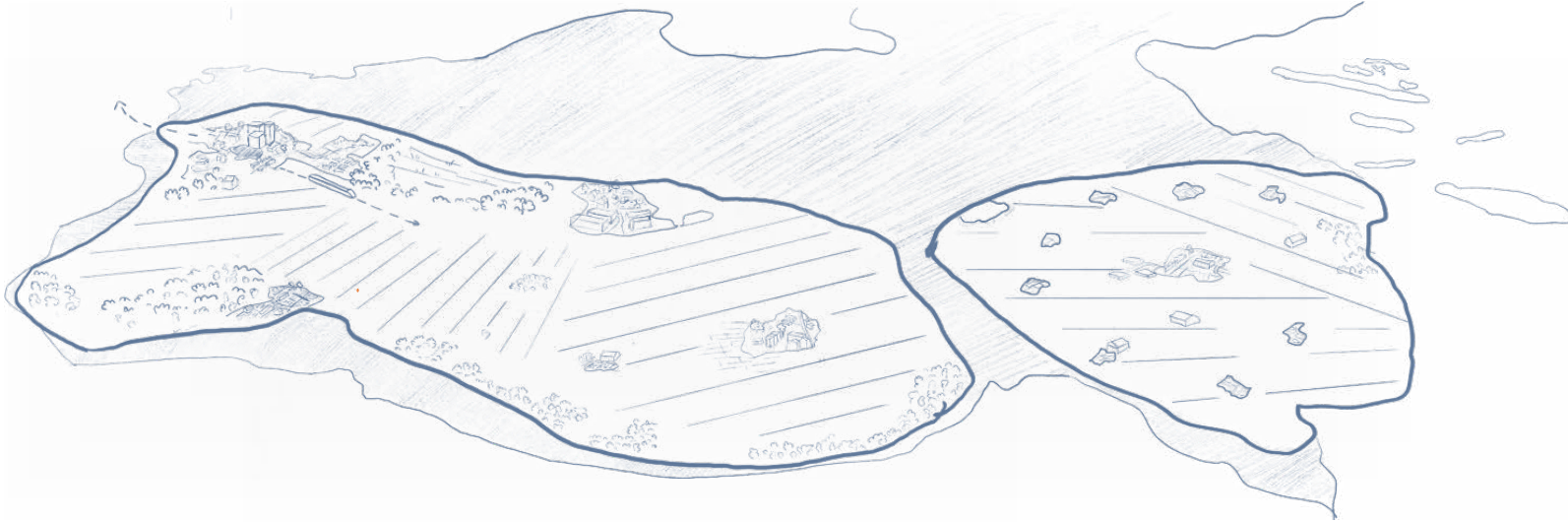
De fysieke ruimte

- Bodem, water, natuur en infrastructuur
- De tastbare omstandigheden van een plek
- Gericht op wat fysiek mogelijk is

Onderzoeksvraag

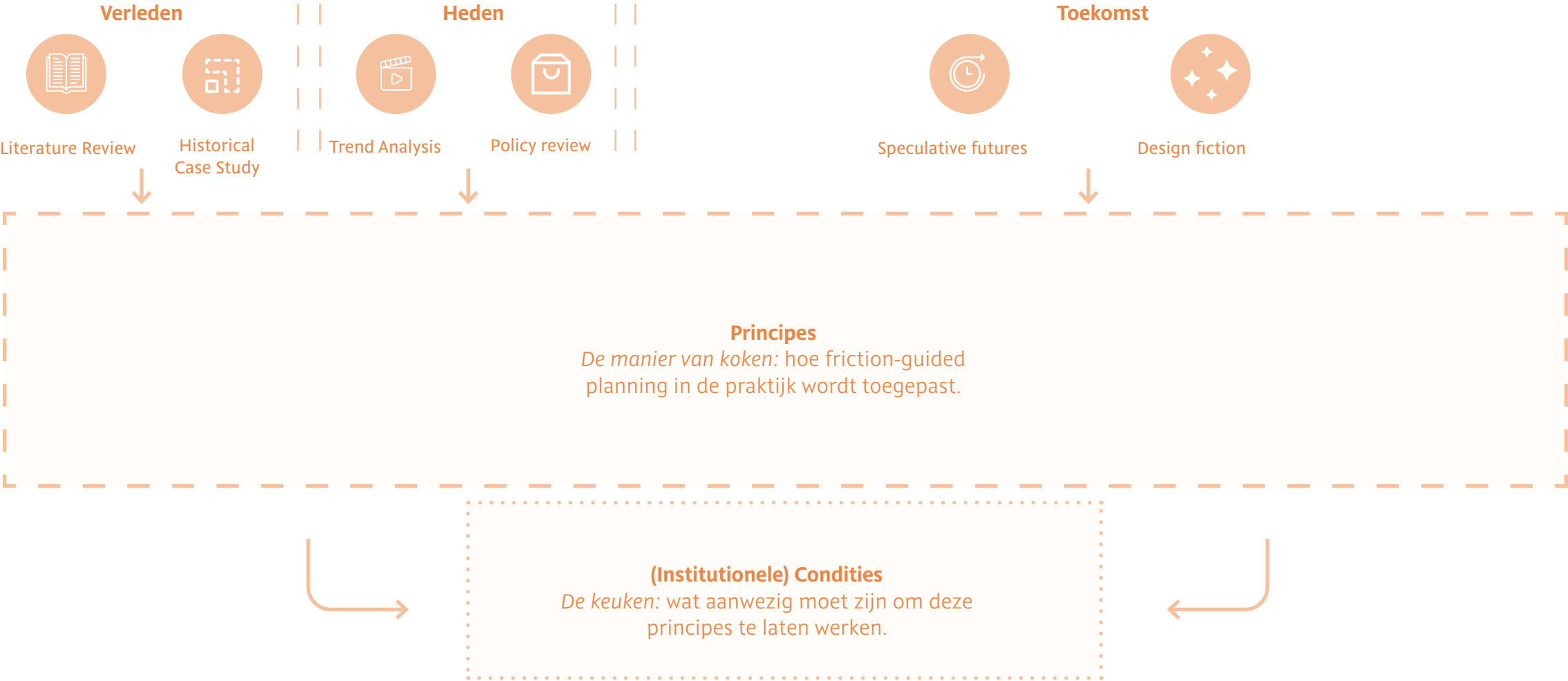
*“To what extent can the **Three Spaces Model** serve as a conceptual basis for a **new planning doctrine** in Dutch spatial planning, and what **conditions** and **planning principles** does this require?”*

Flevoland



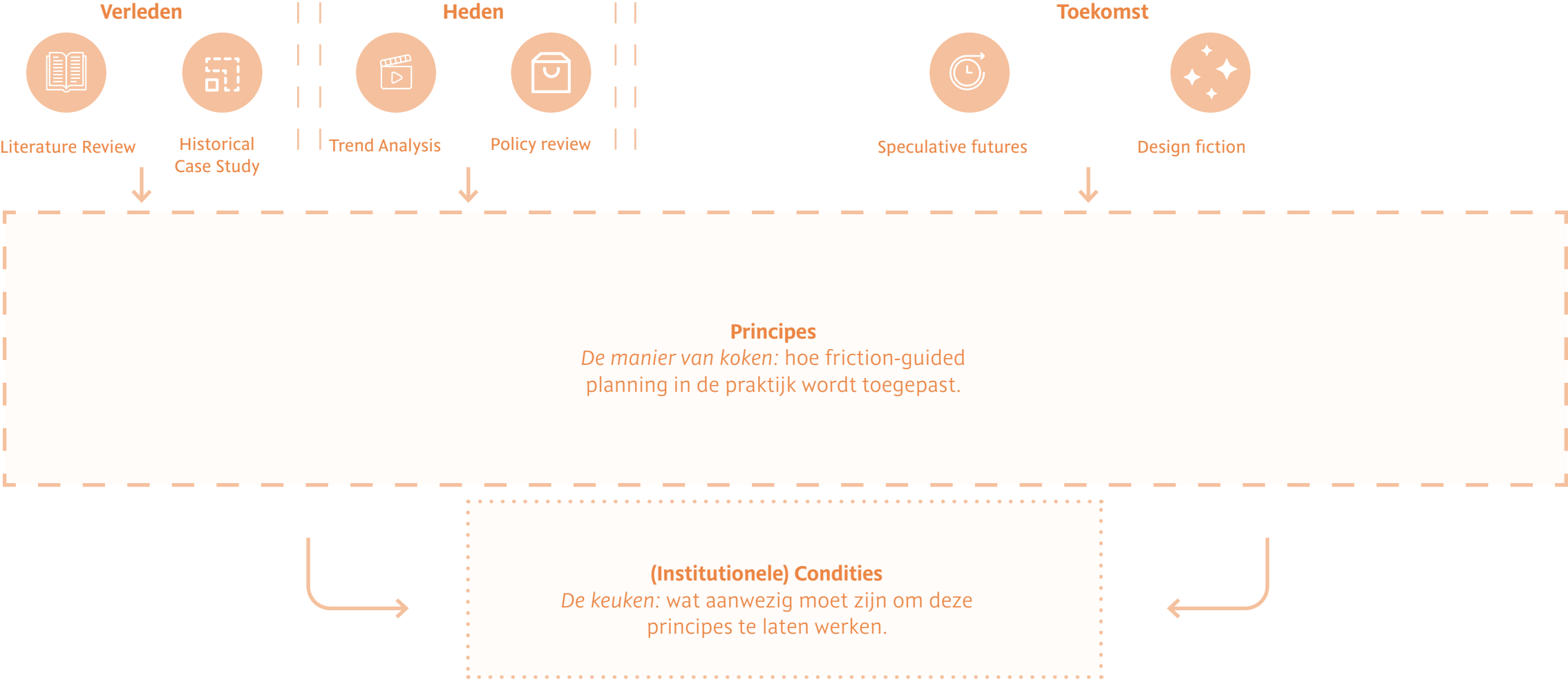
Methodologie

Case Study: Flevoland



Methodologie

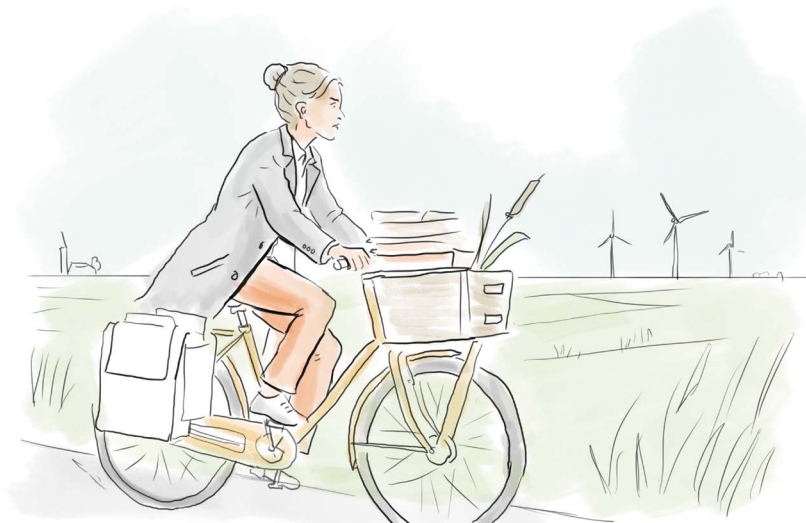
Case Study: Flevoland



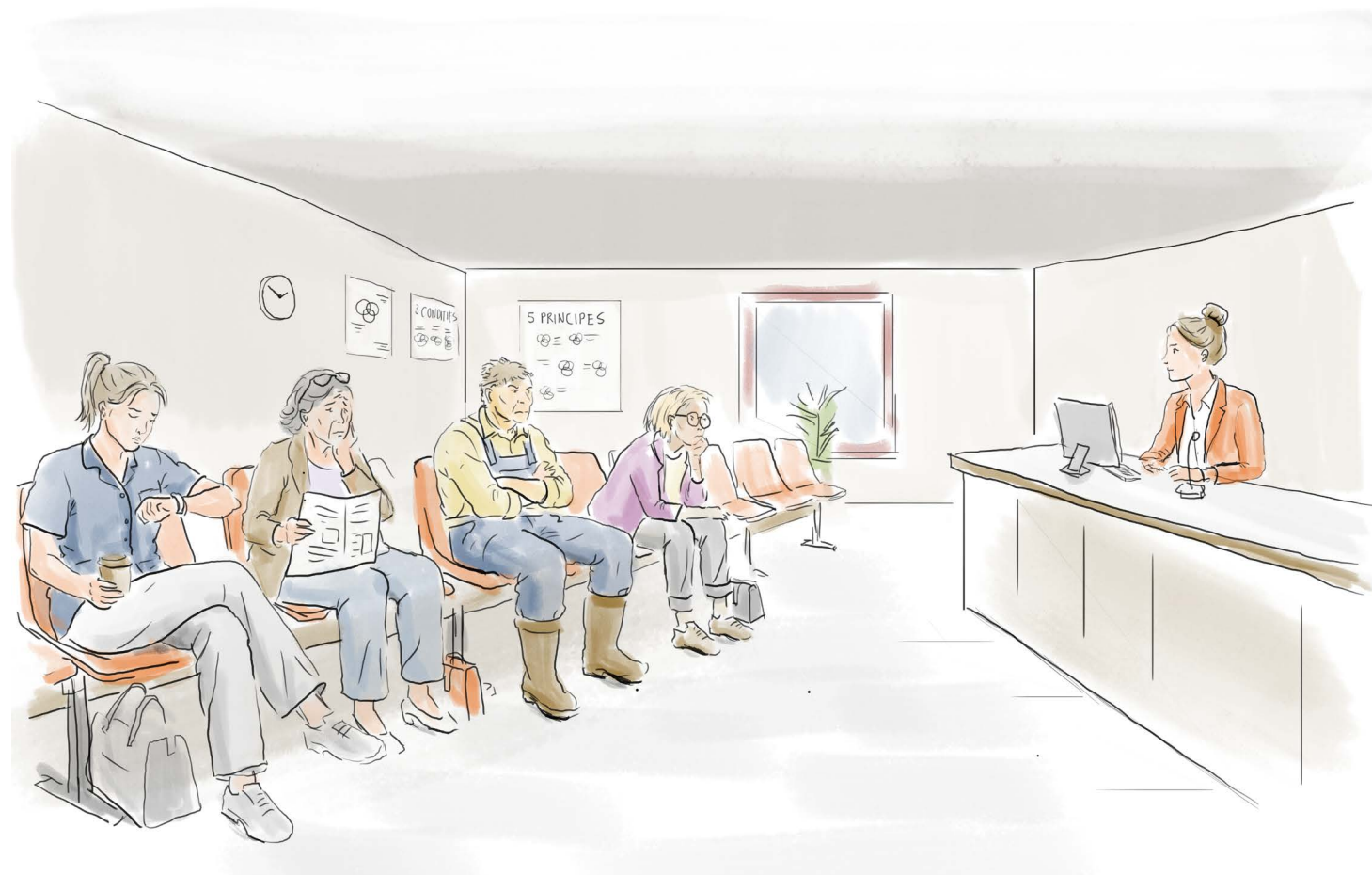
Show, don't tell!

Graphic Novel

HET VERHAAL VAN ANNE-MARIE
DE OMBUDSVROUW VAN
RUIMTELIJKE FRICHTIE



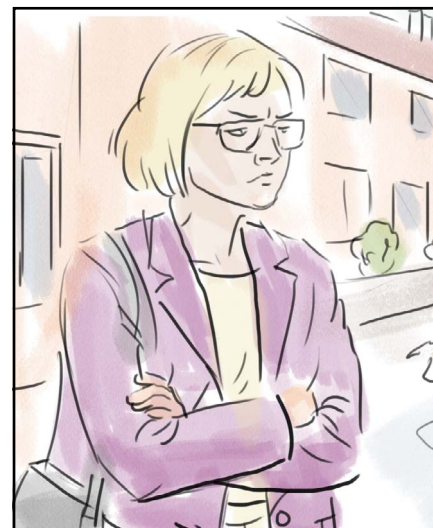
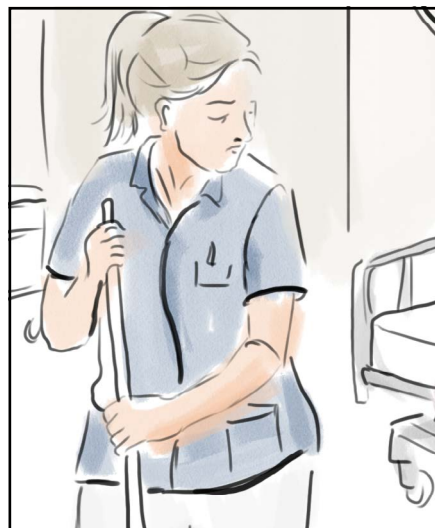
Door Juliette Feldbrugge





Drie zaken

Uit de Graphic Novel

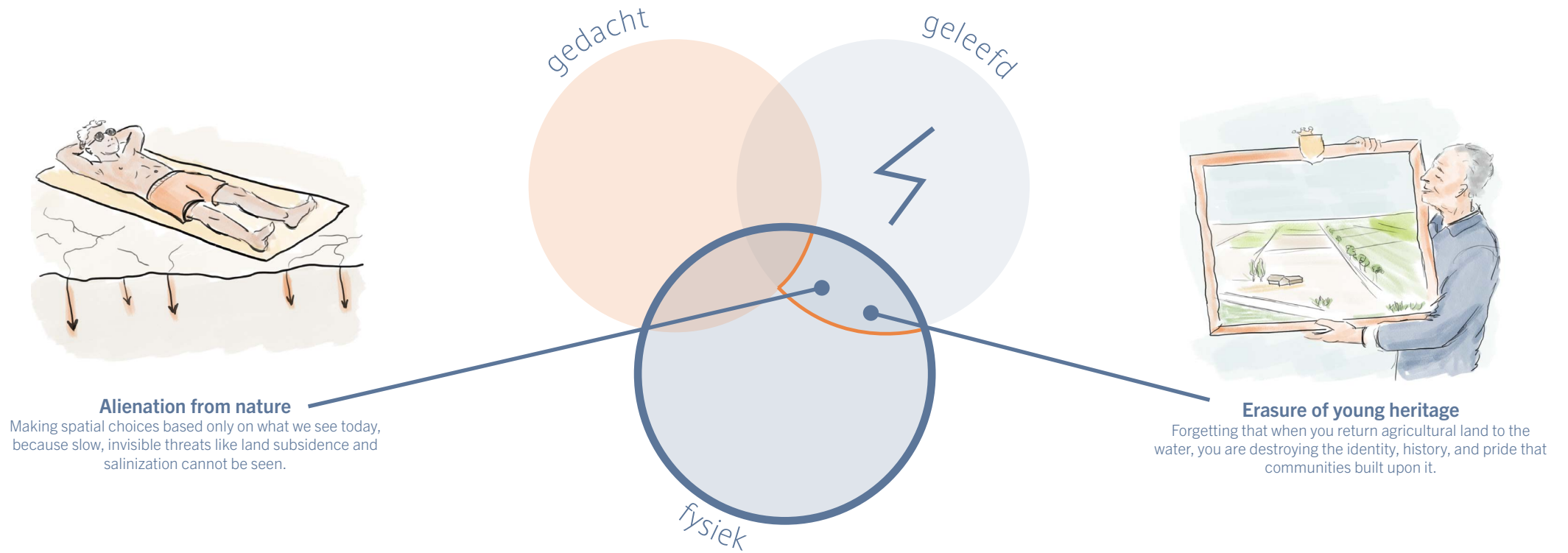


Zaak 1

De boer zonder tijd om afscheid te nemen



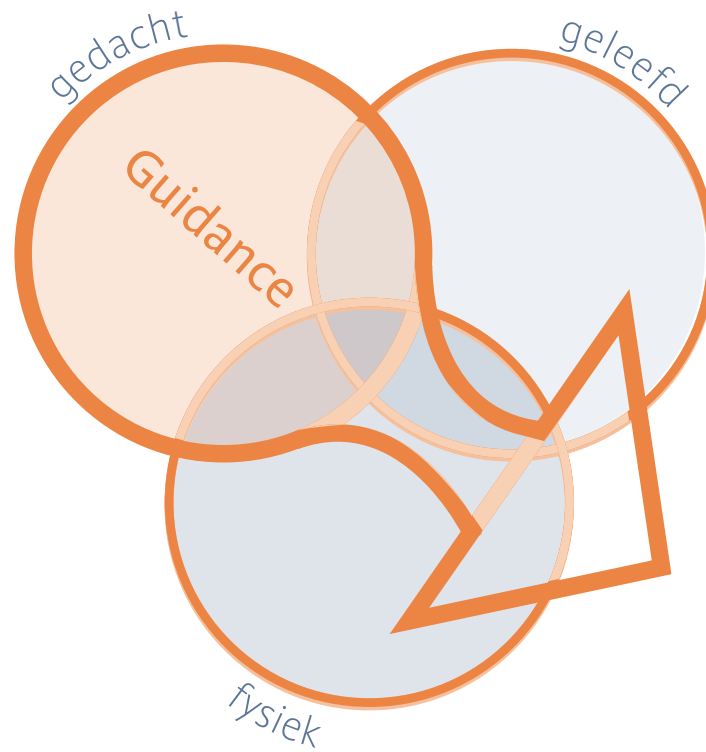
Denied socio-ecological entanglement



Figuur 1: Friction between lived and physical

The principle

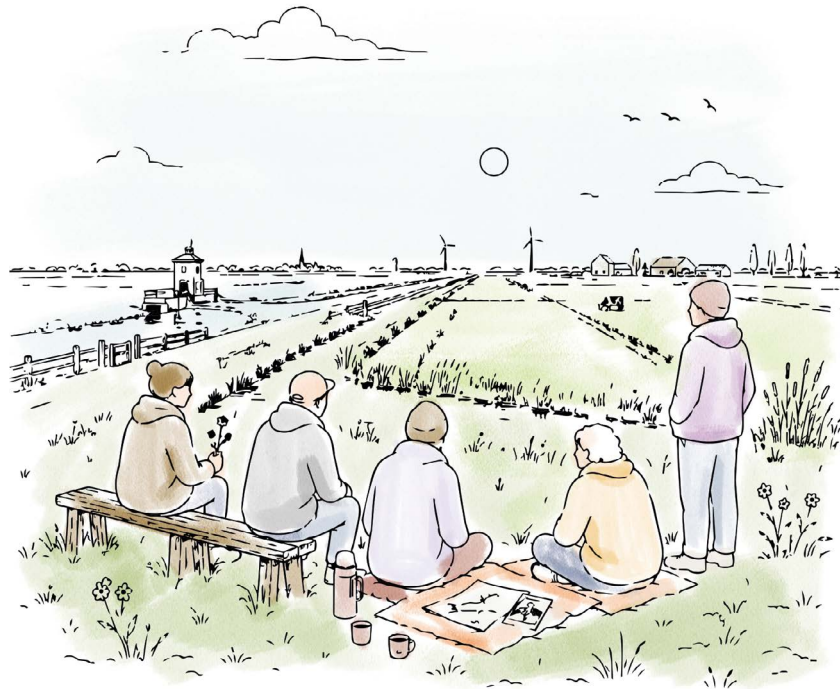
Relational-safeguarding planning



Figuur 2: Friction between lived and physical solved by thought

Voorbeeld

Grieving a landscape



Conditie

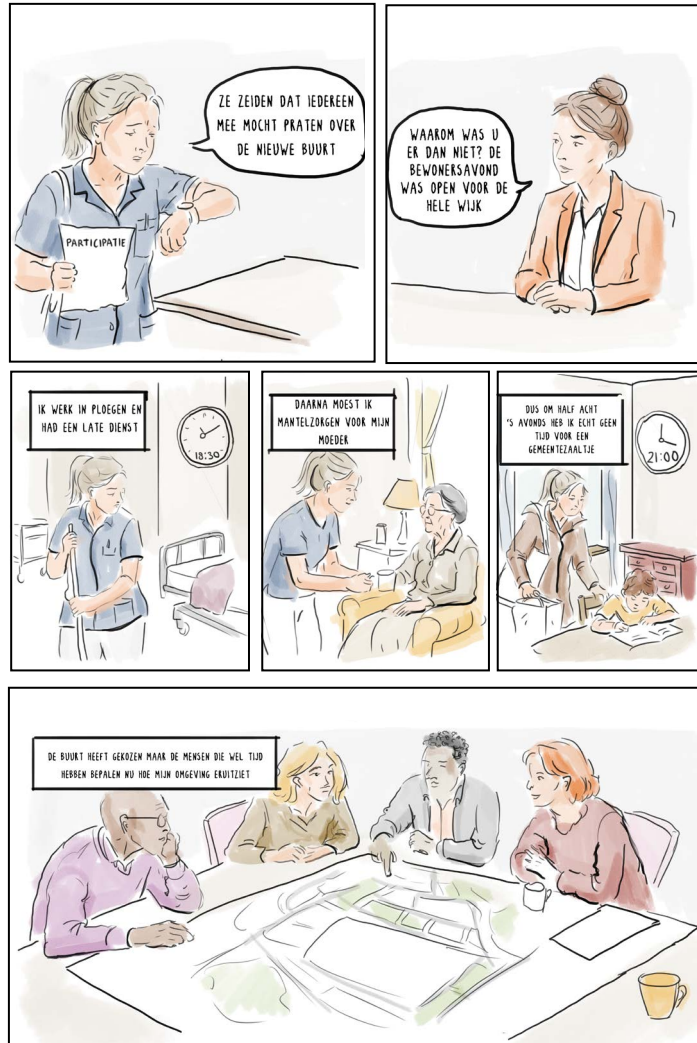
Methodological openness



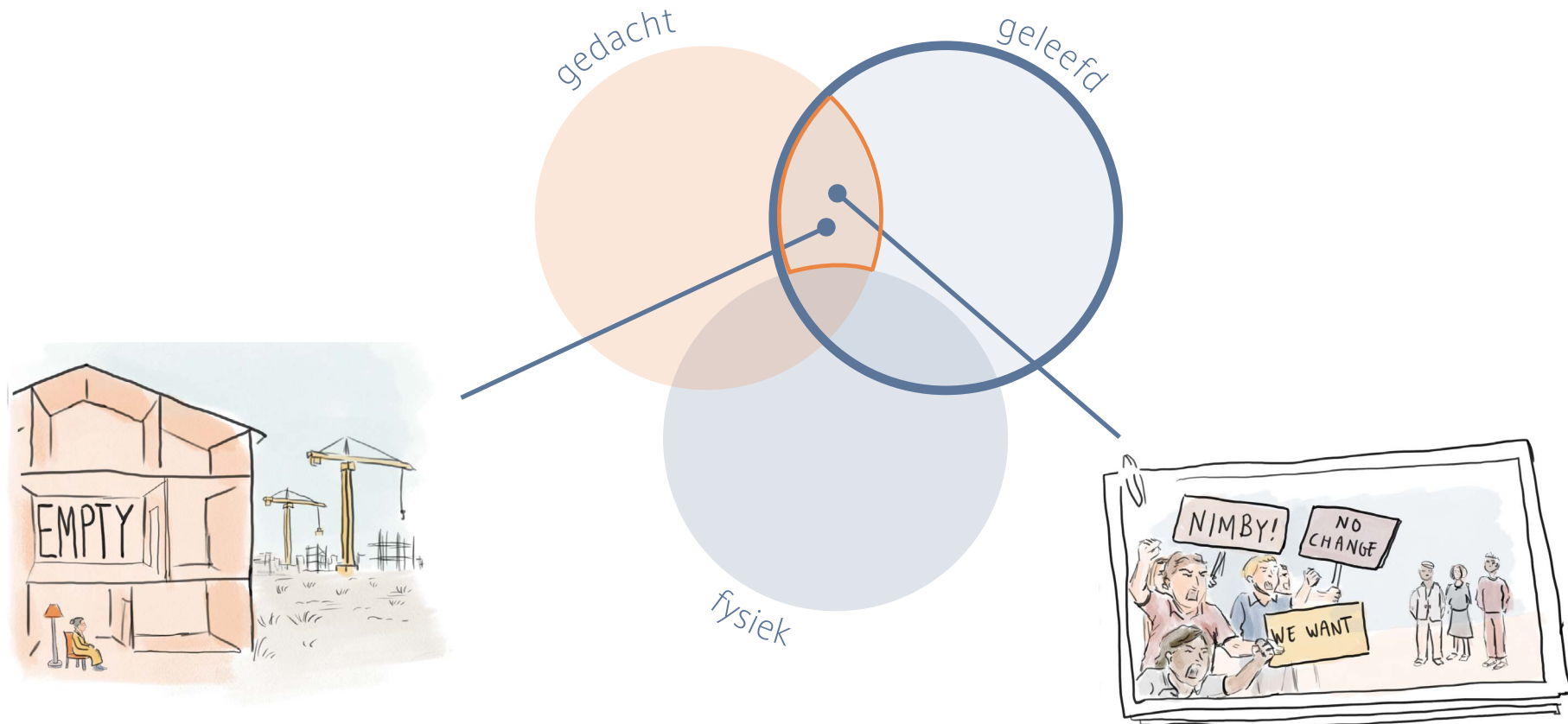
Gebruik meer dan rapporten
en procedures om frictie te
verkennen voordat ruimtelijke
keuzes vastliggen

Case 2

De vrouw die niet kon participeren



Simplification of human complexity



The comfort paradox

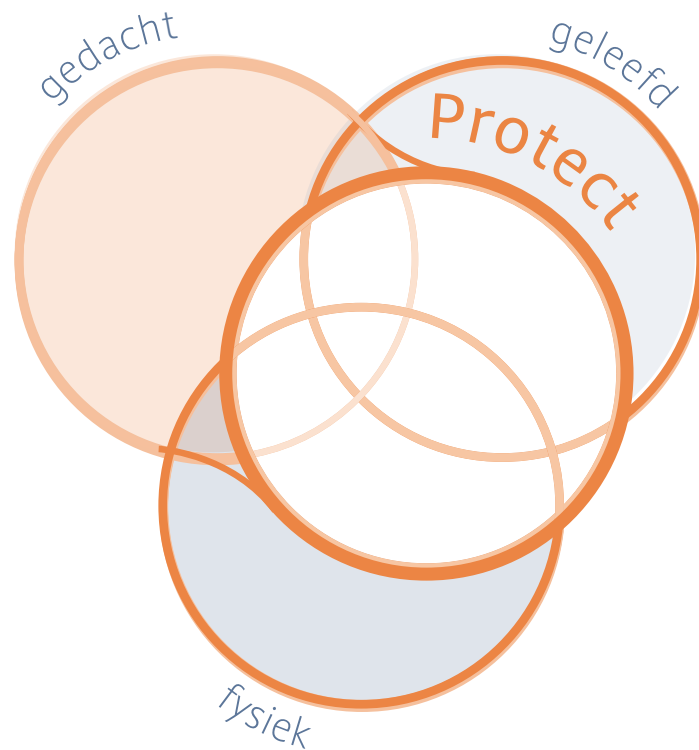
Choosing easy outward expansion on empty land because reorganizing existing homes is “too socially complex.”

Survival of the loudest

Letting spatial planning be ruled by the most vocal or wealthy, residents, while ignoring the silent.

Planning principe

Relational-safeguarding planning



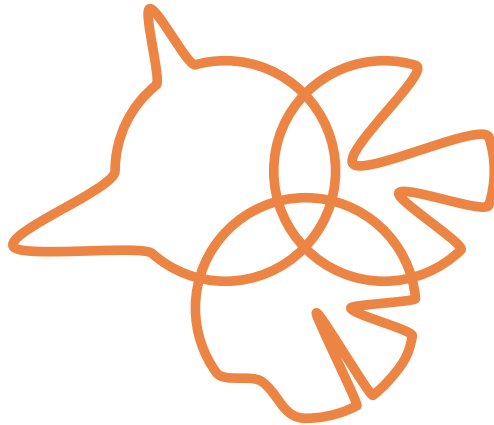
Voorbeeld

Silent stakeholders mapping



Conditie 2

Power accountability



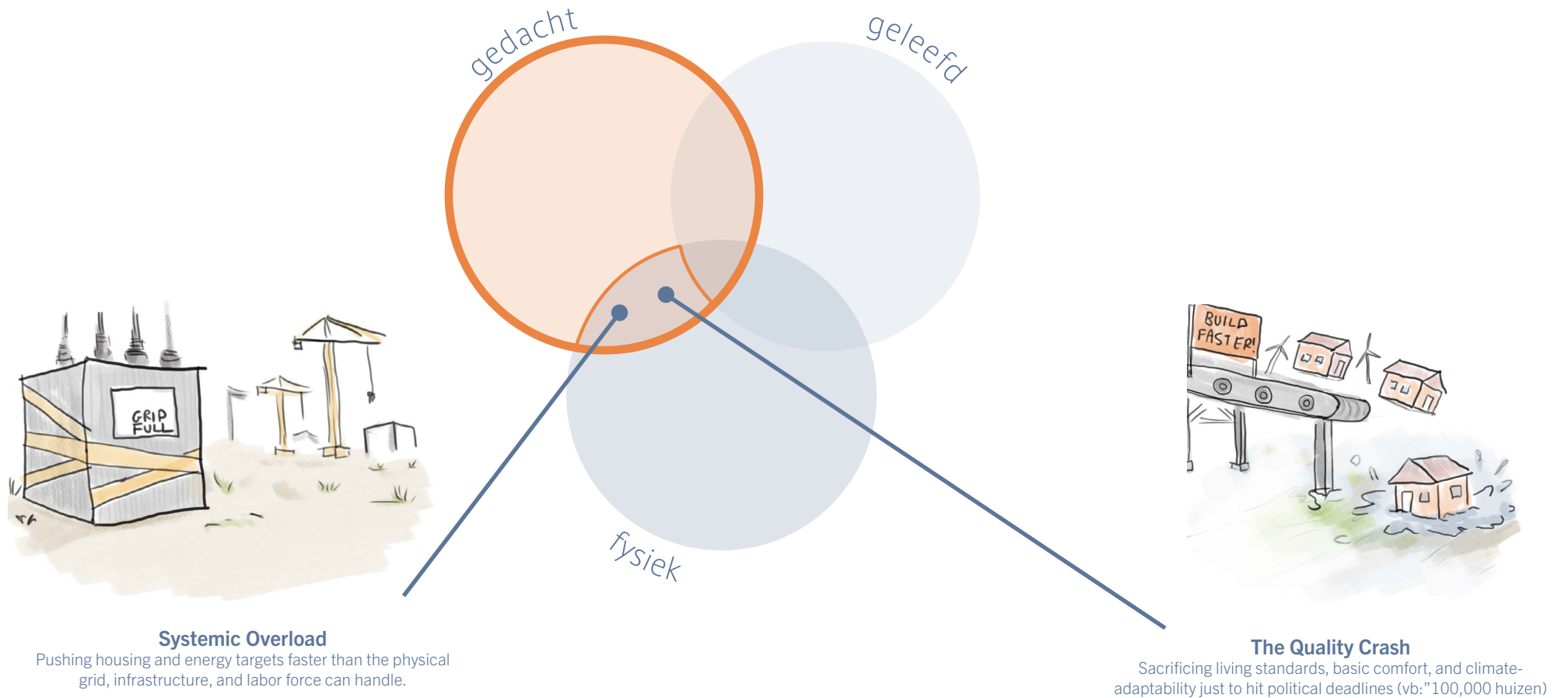
Maak zichtbaar wie wordt gehoord,
wie ontbreekt en wiens stem echt
meeweegt in het besluit.

Zaak 3

De vrouw met het zinkende huis

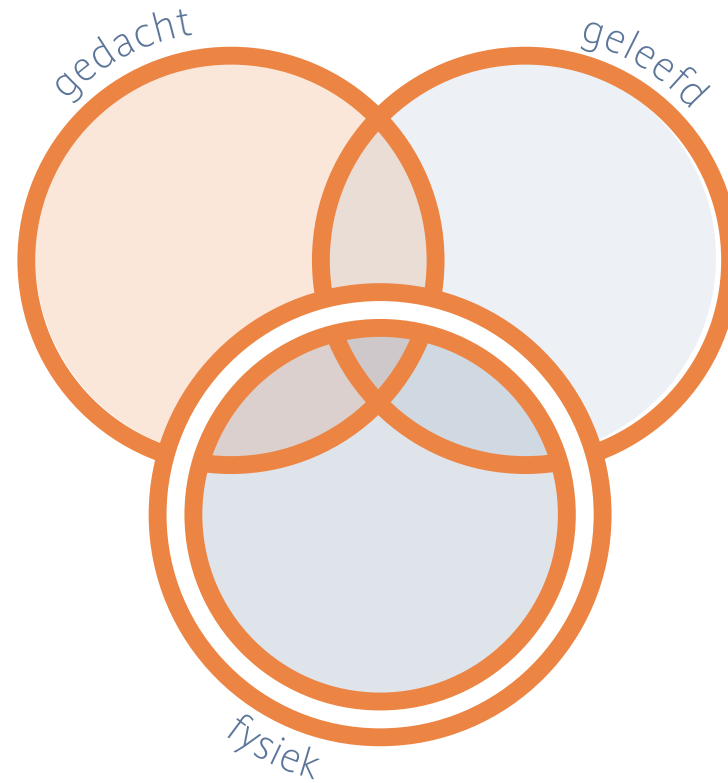


Temporal system conflict



Planning principle

Condition-driven planning



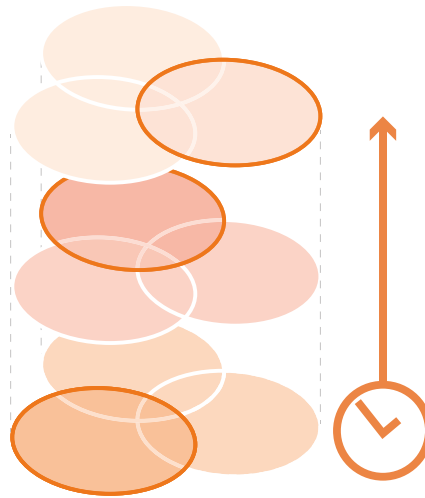
For example

Water/bodem sturend naar leidend



Conditie

Temporal alignment



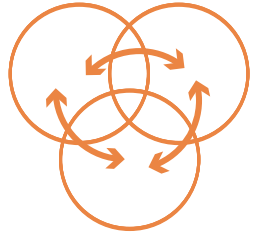
Planning moet werken met
verschillende tijden: politieke
deadlines, sociale aanpassing en
trage fysieke systemen.

Onderzoeksvraag

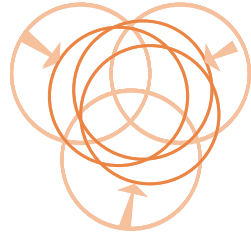
*“To what extent can the **Three Spaces Model** serve as a conceptual basis for a **new planning doctrine** in Dutch spatial planning, and what **conditions** and **planning principles** does this require?”*

What?

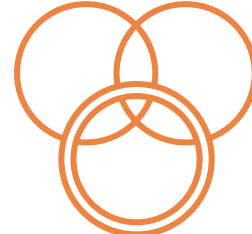
The principles and conditions



Translational planning:
Translate every spatial claim before it lands.



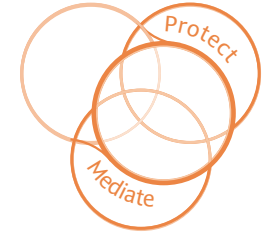
Integrated planning:
Make every space legible, not only the plan.



Condition-driven planning:
Let soil, water and time set the pace.



Socio-ecological transition planning:
Let landscapes and communities change together.



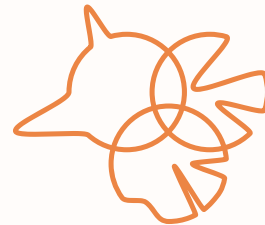
Relational-safeguarding planning:
Protect people where transitions hit hardest and mediate to help.

Conditions 1 - 3:

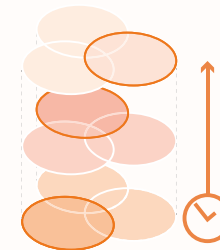
Derived from the time analysis and planning principles



Methodological openness:
Give direction without locking the future.



Power accountability:
Use friction to reveal who carries the burden.



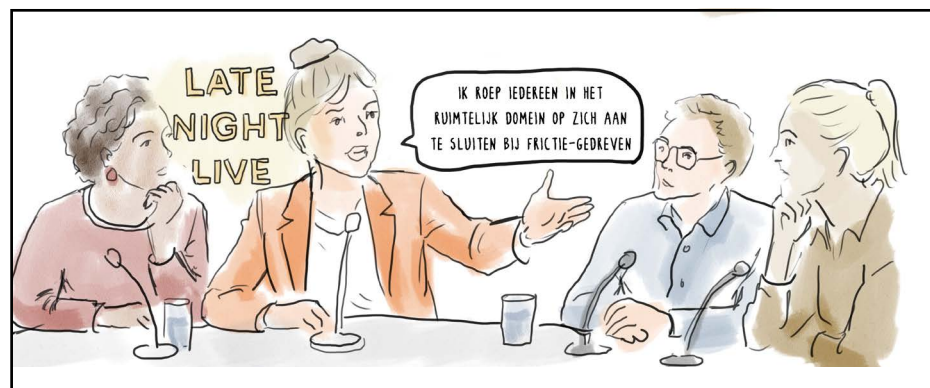
Temporal alignment:
Make planning work across different clocks..

Conclusion

Van 'Wat' naar 'Hoe'

Frictie als een kompas

Institutionele prototyping



Pleidooi

Towards a Friction-guided planning doctrine

