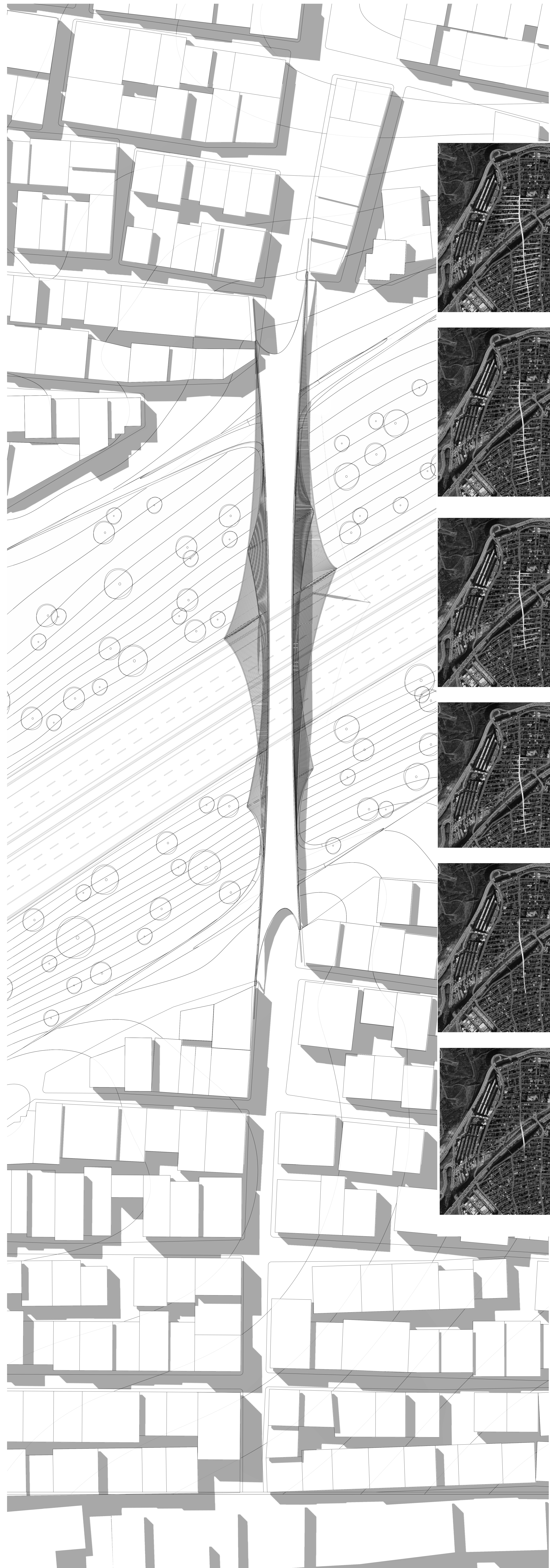


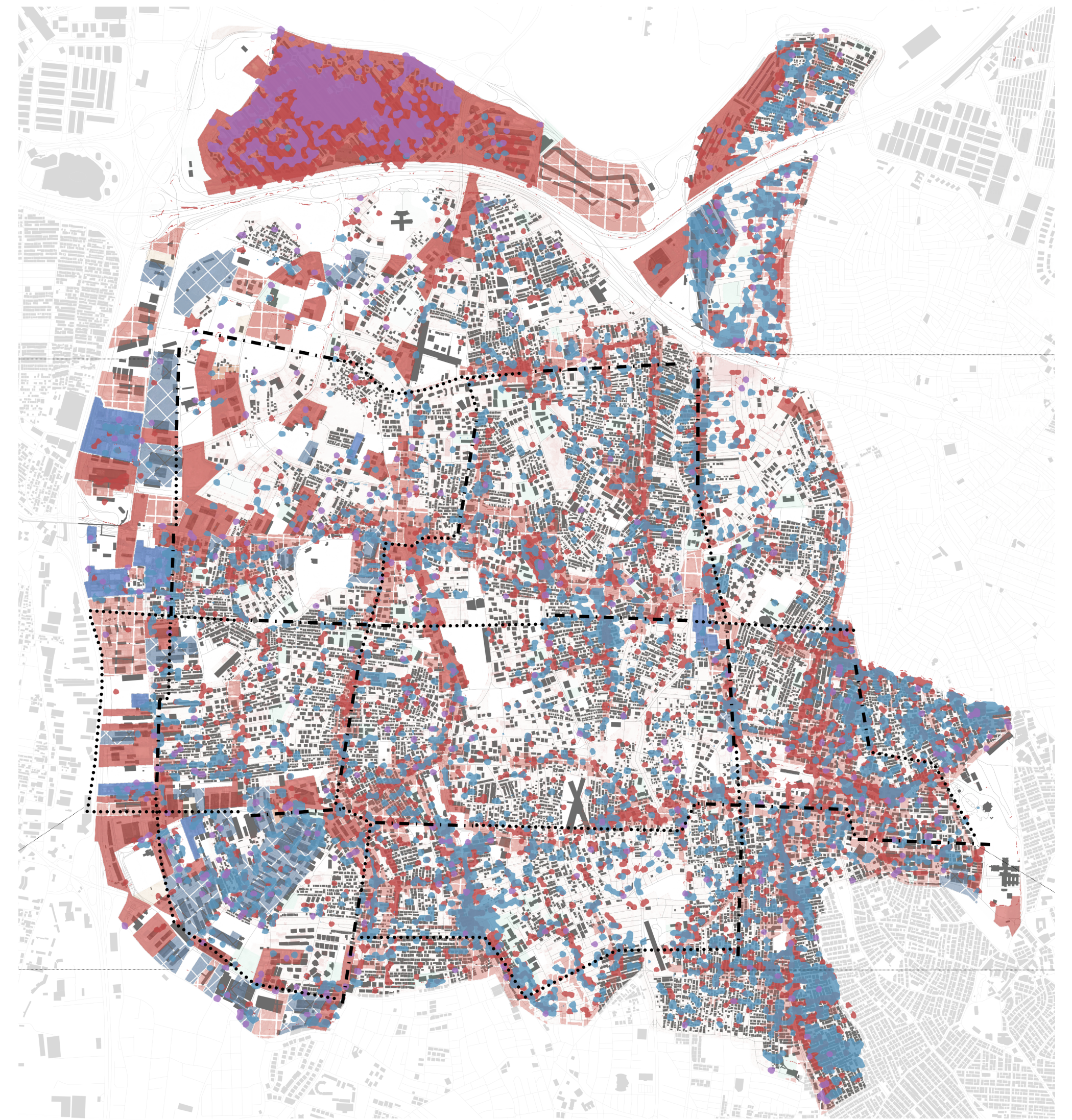
# Urban Fabrication

Site Plan

1:500

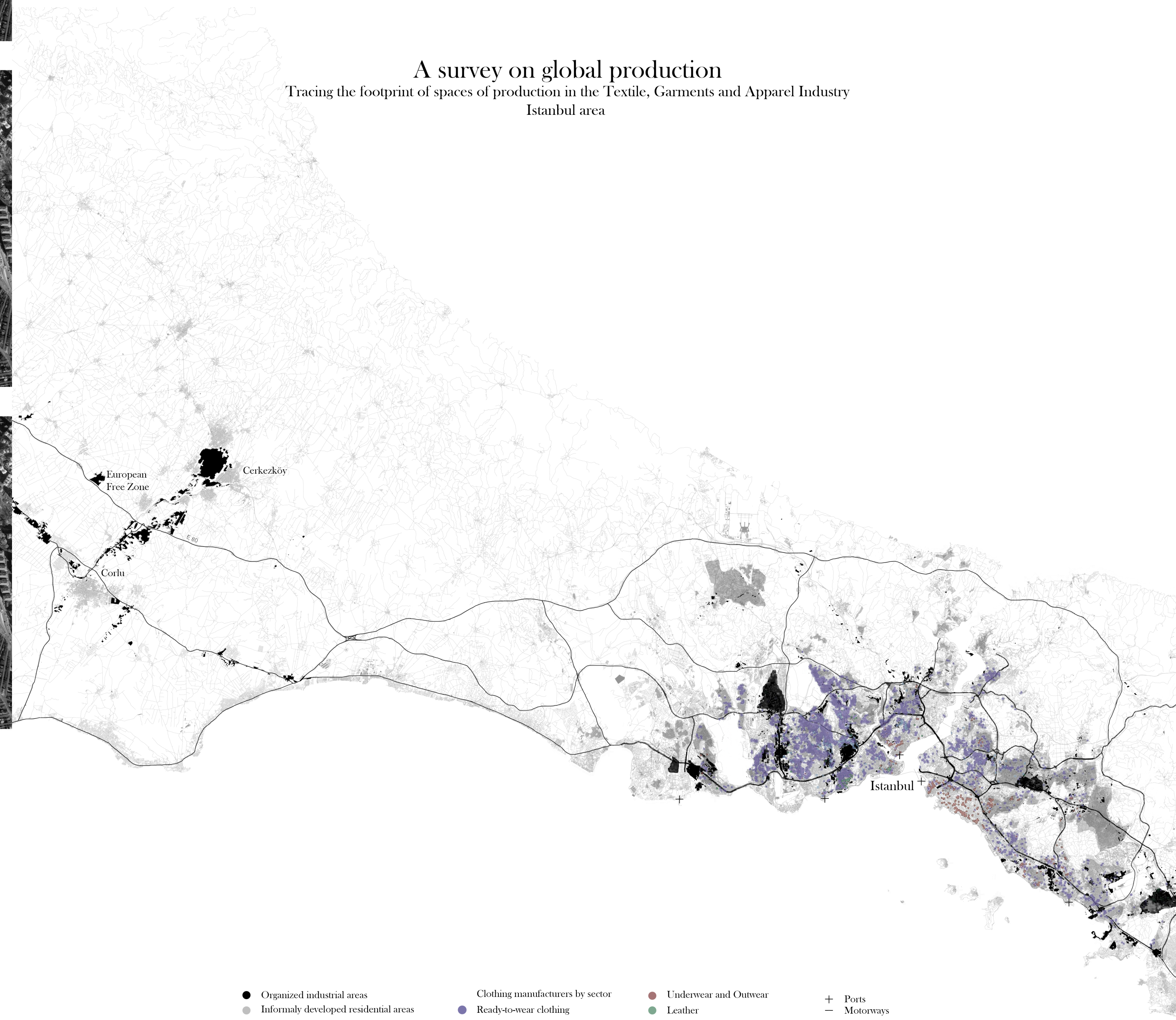


The localities of global production  
Tracing the spaces of production in the Garments and Apparel Industry  
Bagcilar district



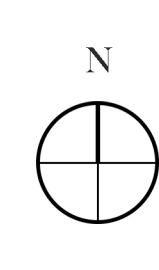
- Trade factory area (wholesale)
- Production in factories
- Commercial zones residential area
- Production in residential area (small enterprise/sweatshops)
- storage and transport
- Retail residential area

A survey on global production  
Tracing the footprint of spaces of production in the Textile, Garments and Apparel Industry  
Istanbul area



- Organized industrial areas
- Informally developed residential areas
- Clothing manufacturers by sector
- Ready-to-wear clothing
- Underwear and Outerwear
- Leather
- + Parks
- Motorways

0m 10m 100m

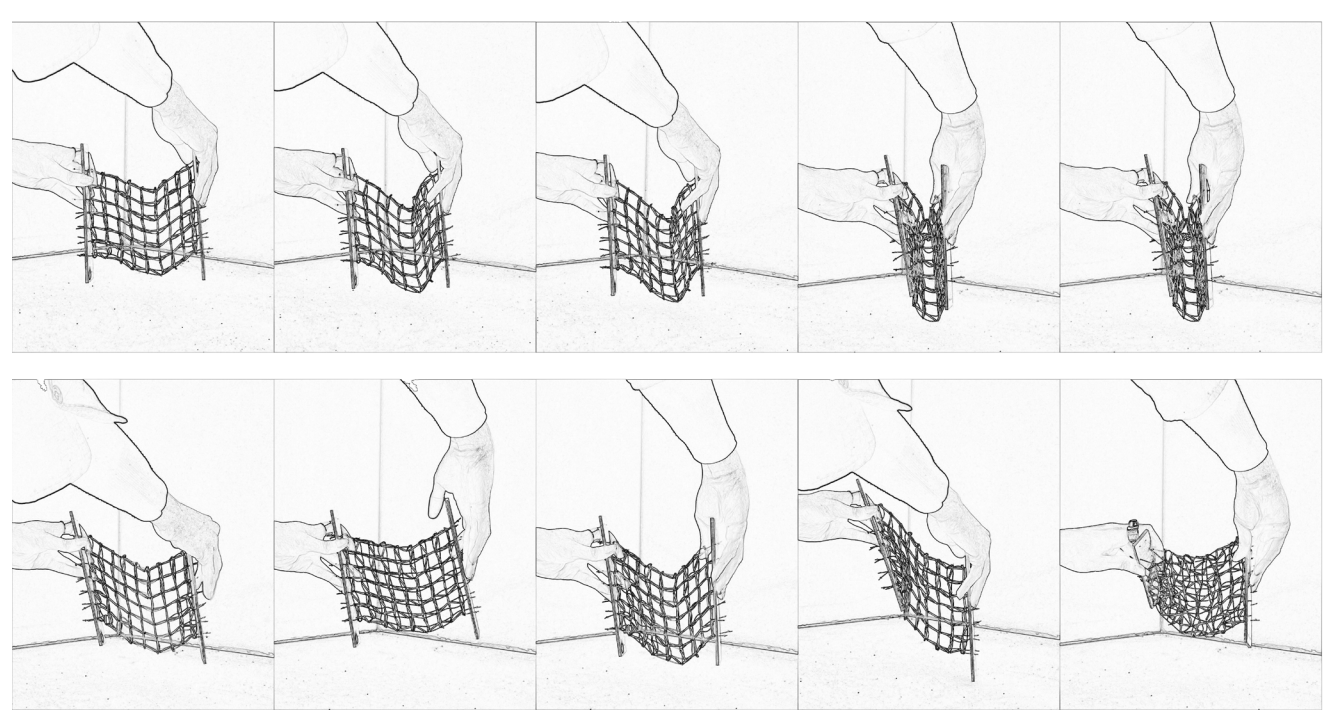


# Assembly Patterns

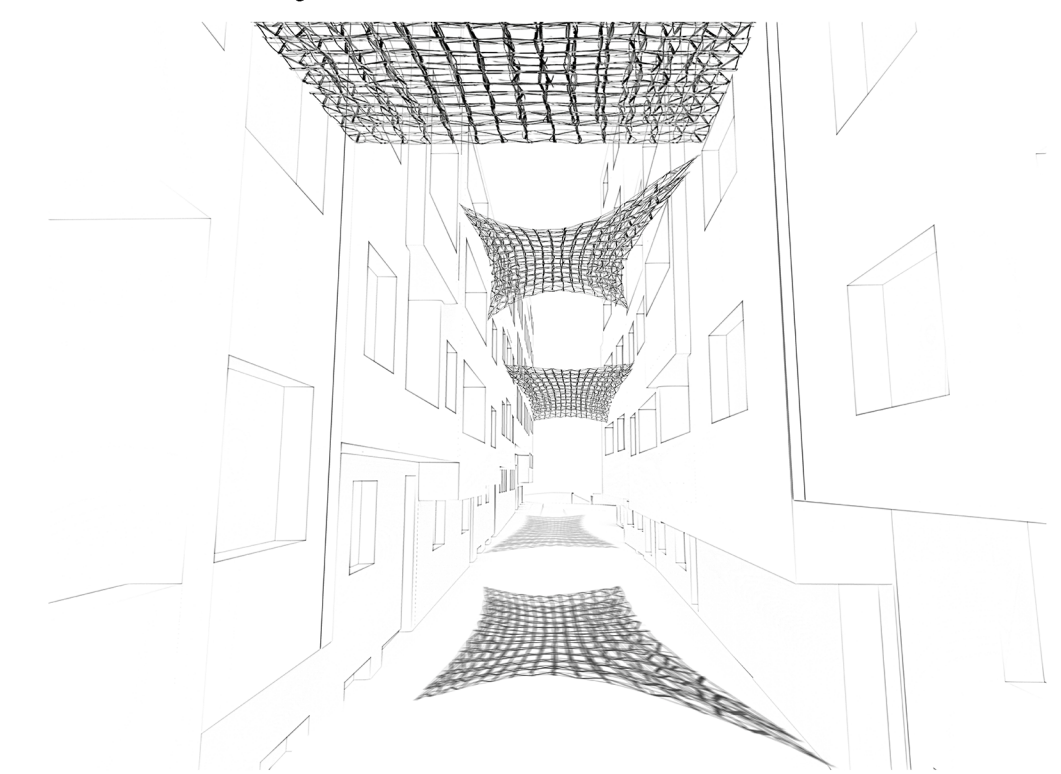


## Inside the Machine

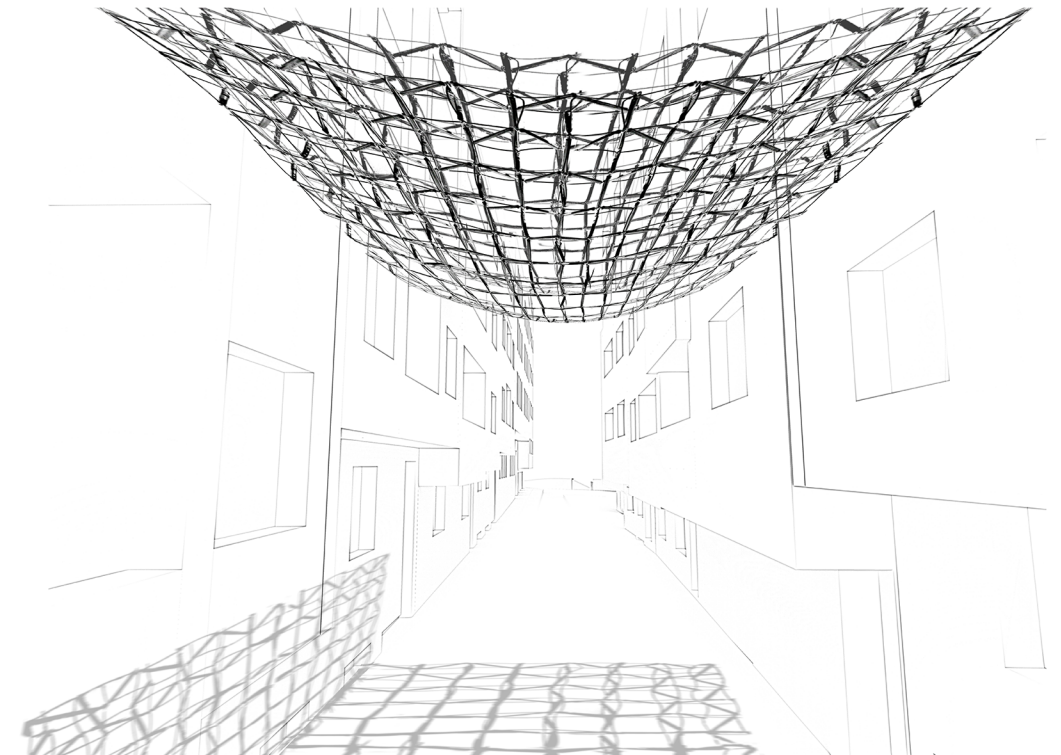
Assembly Stage 0: Prefabrication at home



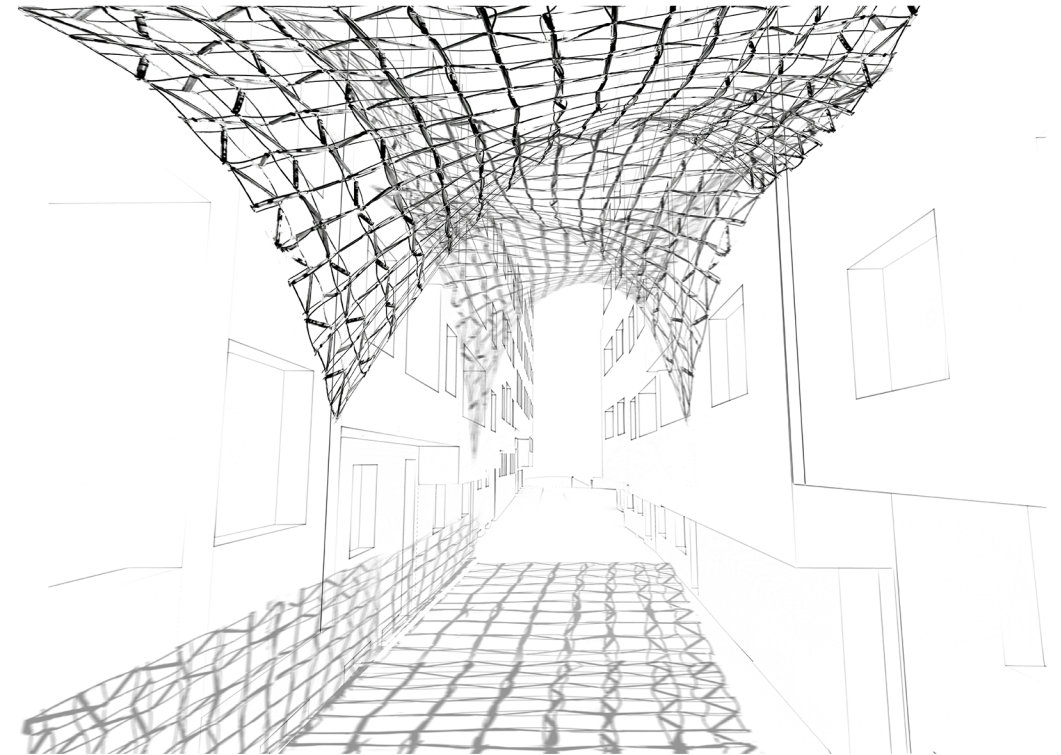
Assembly Process on side streets



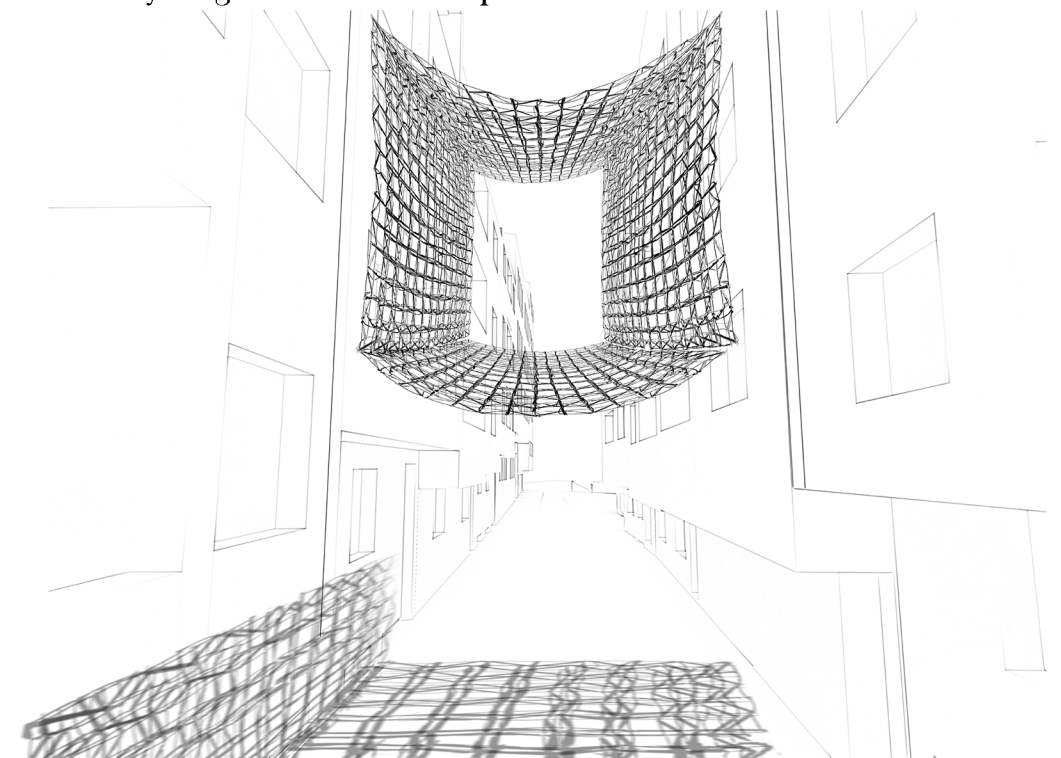
Assembly Stage 1 Construction of smallest fragments completed



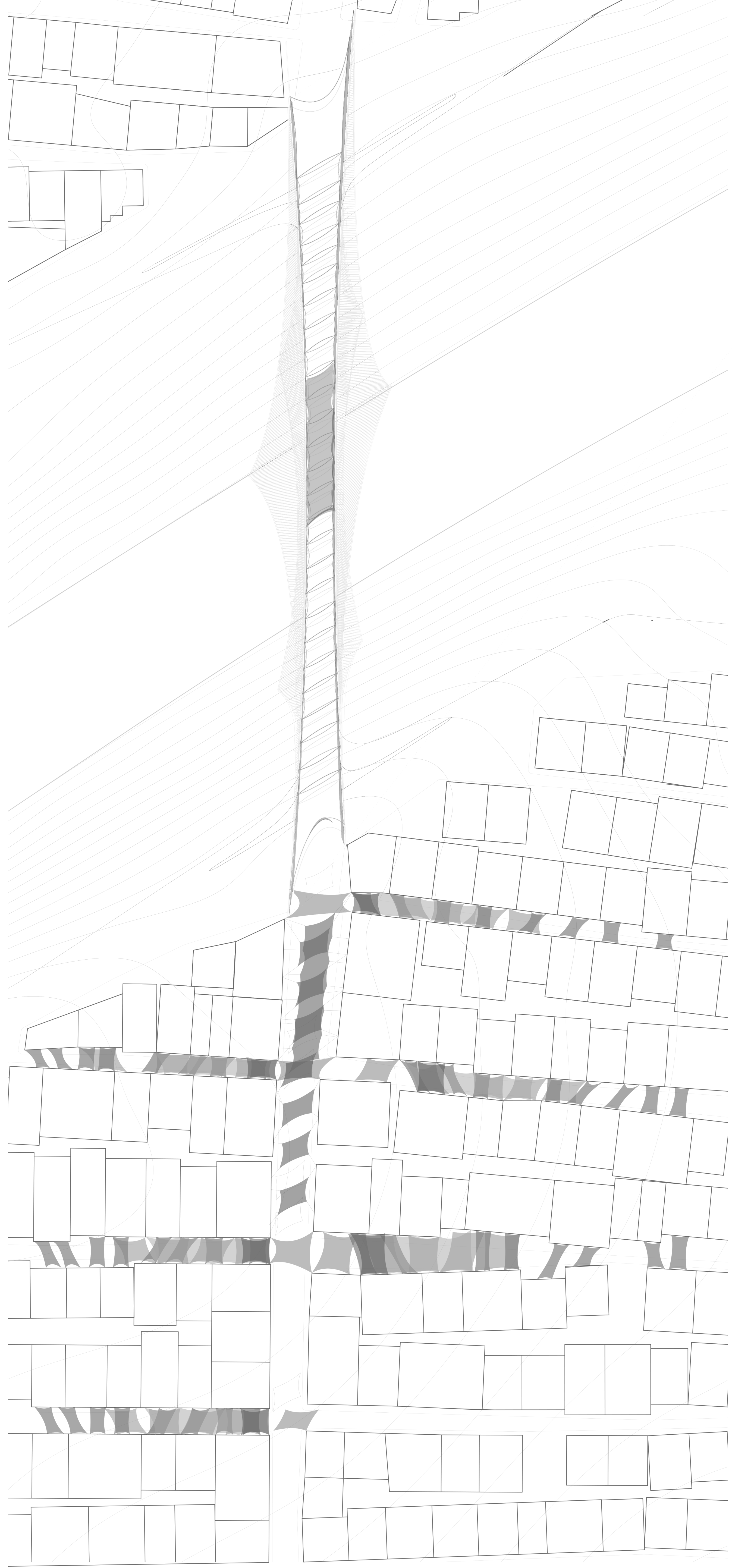
Assembly Stage 2 Smaller fragments connected to bigger ones



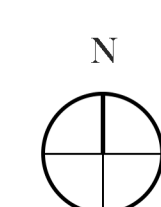
Assembly Stage 3 full slice completed



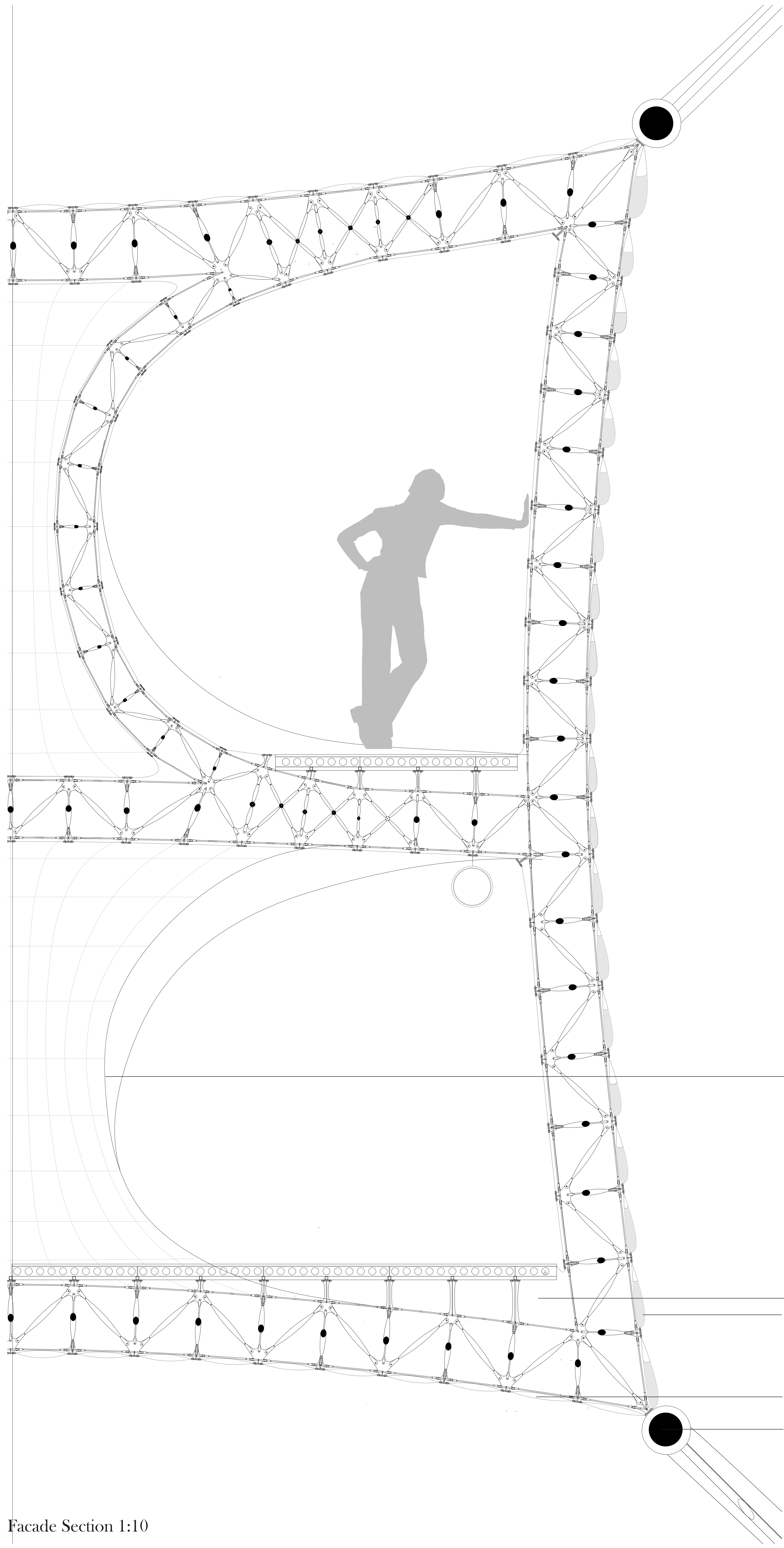
Assembly Stage 4 slice folded



0m 10m 100m



# The Inhabitable Lightness of Tension



Facade Section 1:10

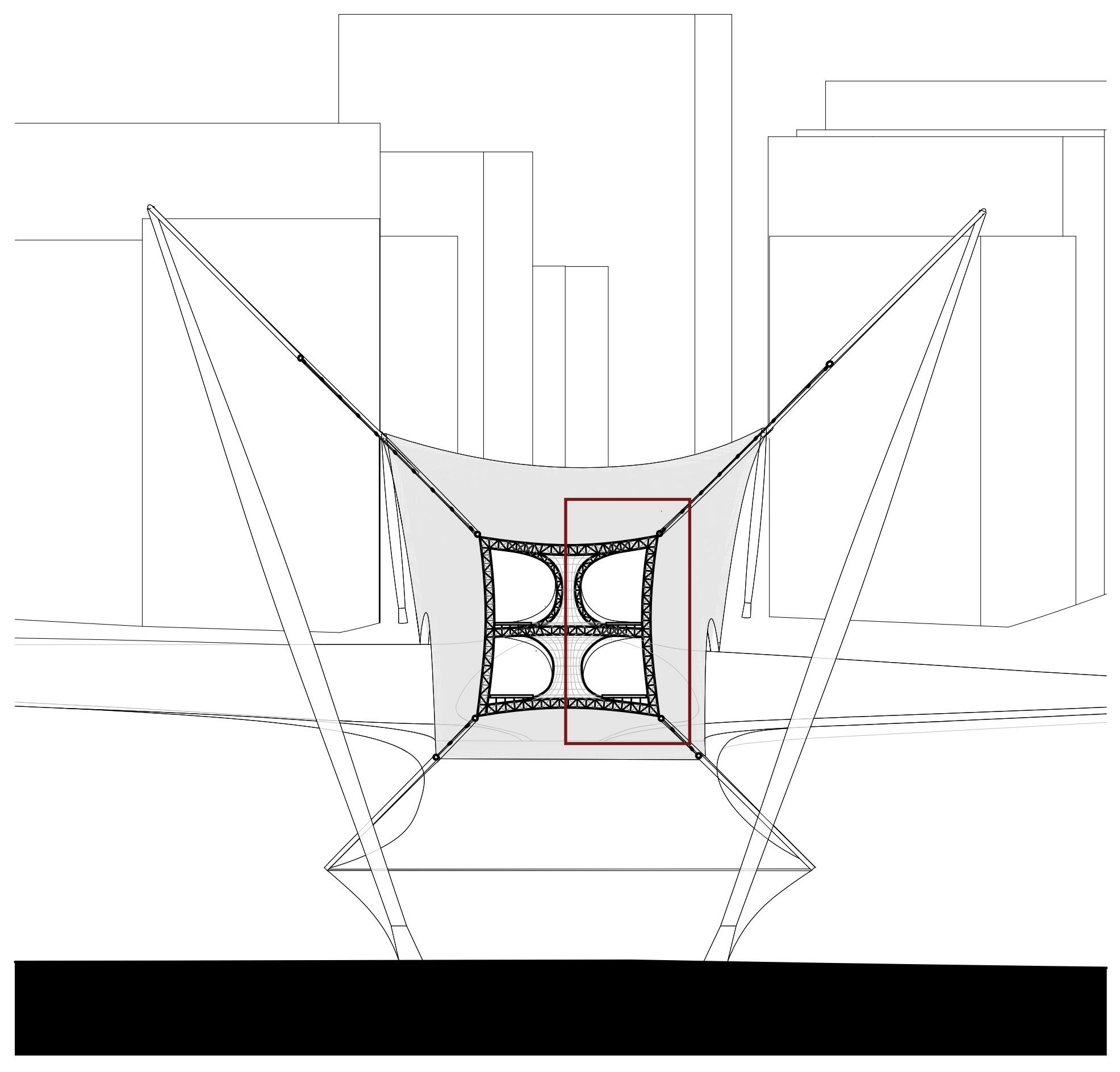
Tensile column

Piping for the algae bioreactor system

ETFE (Ethylene tetrafluoroethylene) pillows filled with algae

ETFE (Ethylene tetrafluoroethylene) pillows filled with insulating gas

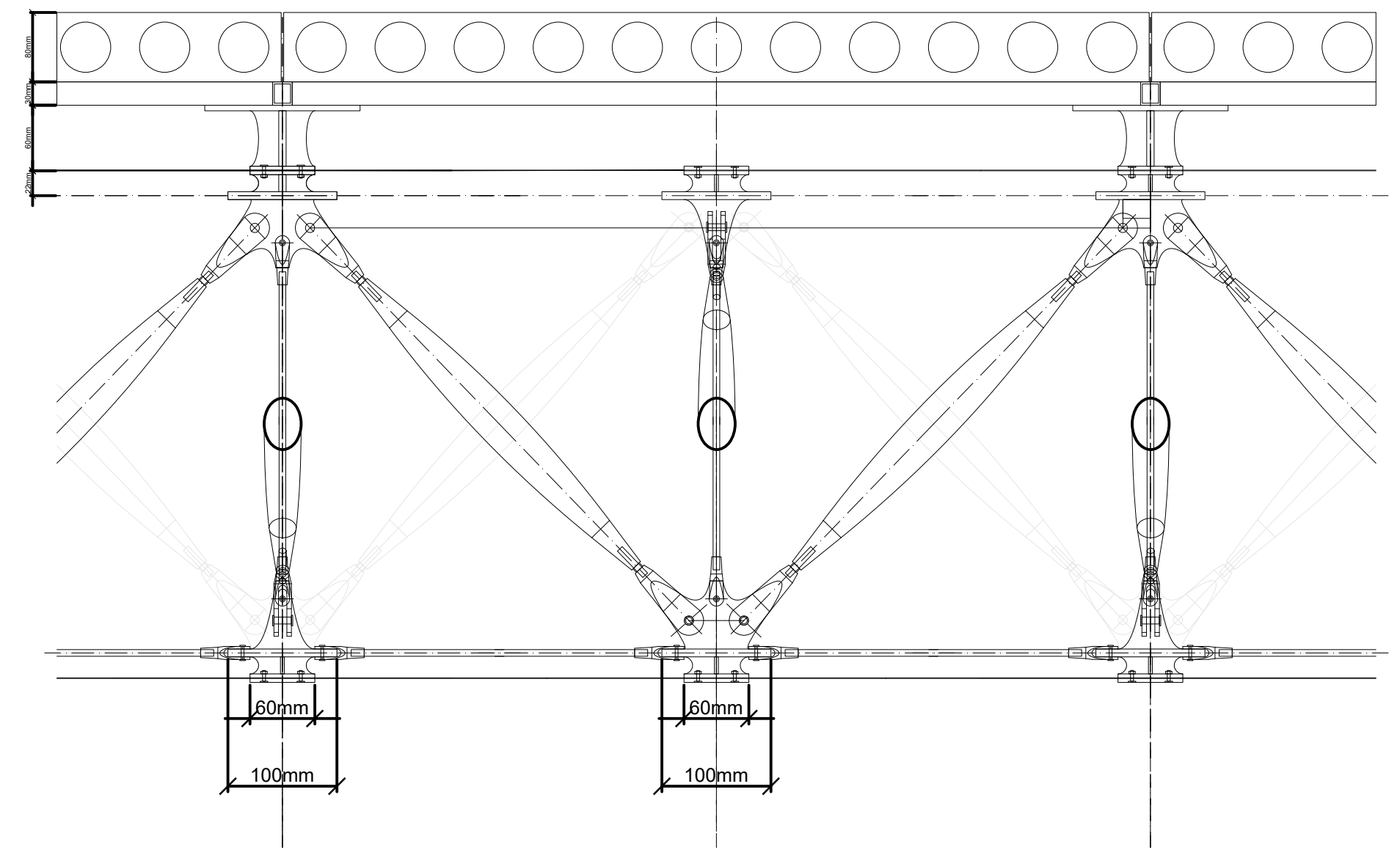
Main Structural steel cable



Cross Section 1:200

**Section 1:5**

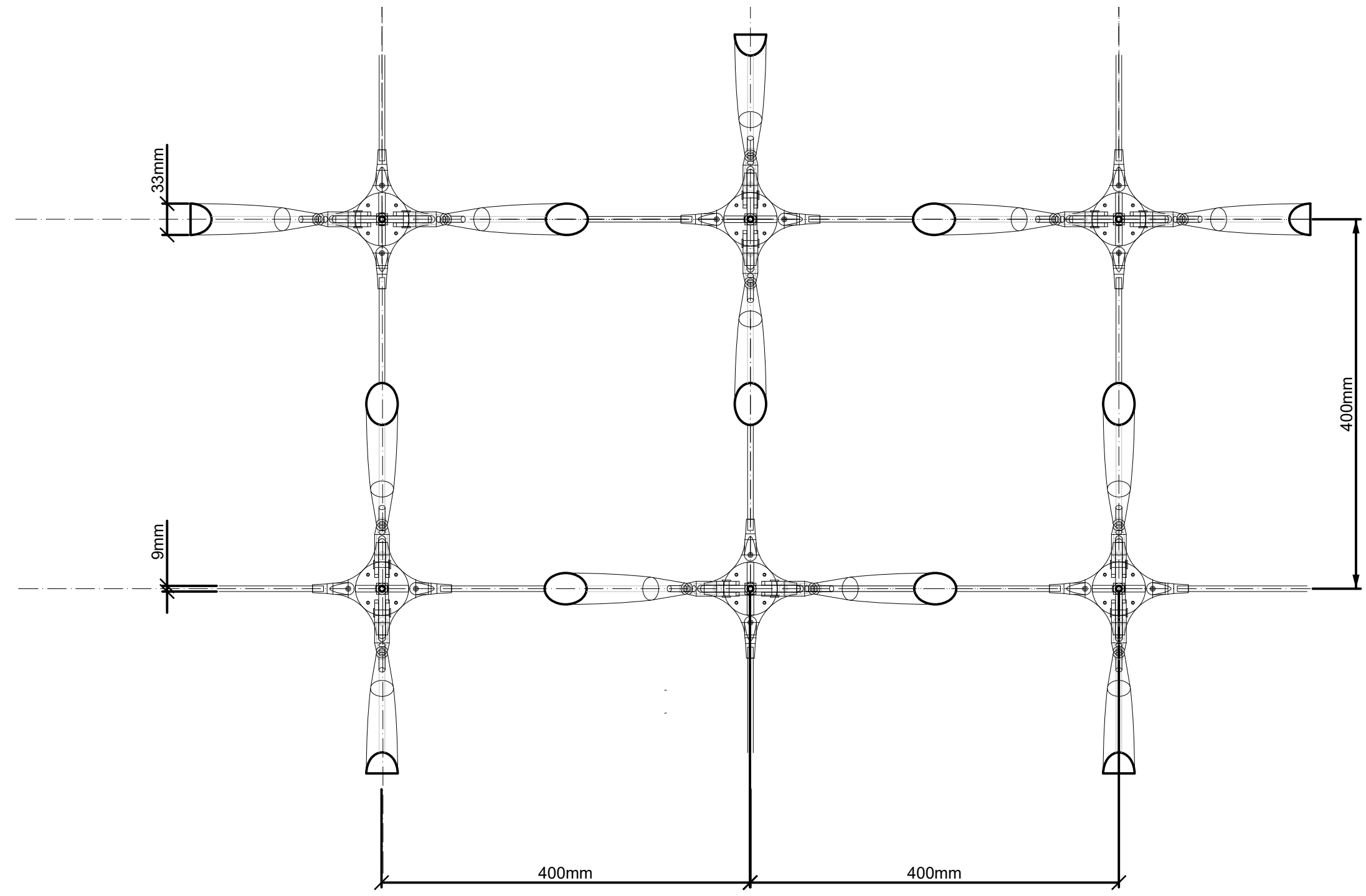
- Hollowcore concrete plates
- False floor square profiles steel
- False floor pedestals steel
- PVC coated Polyester 5mm
- Support structure
- Steel joint for cable rod tension system



**Plan 1:5**

Steel Strut

Steel Cable



Detailing Scheme - Exemplary Configuration 1:5