

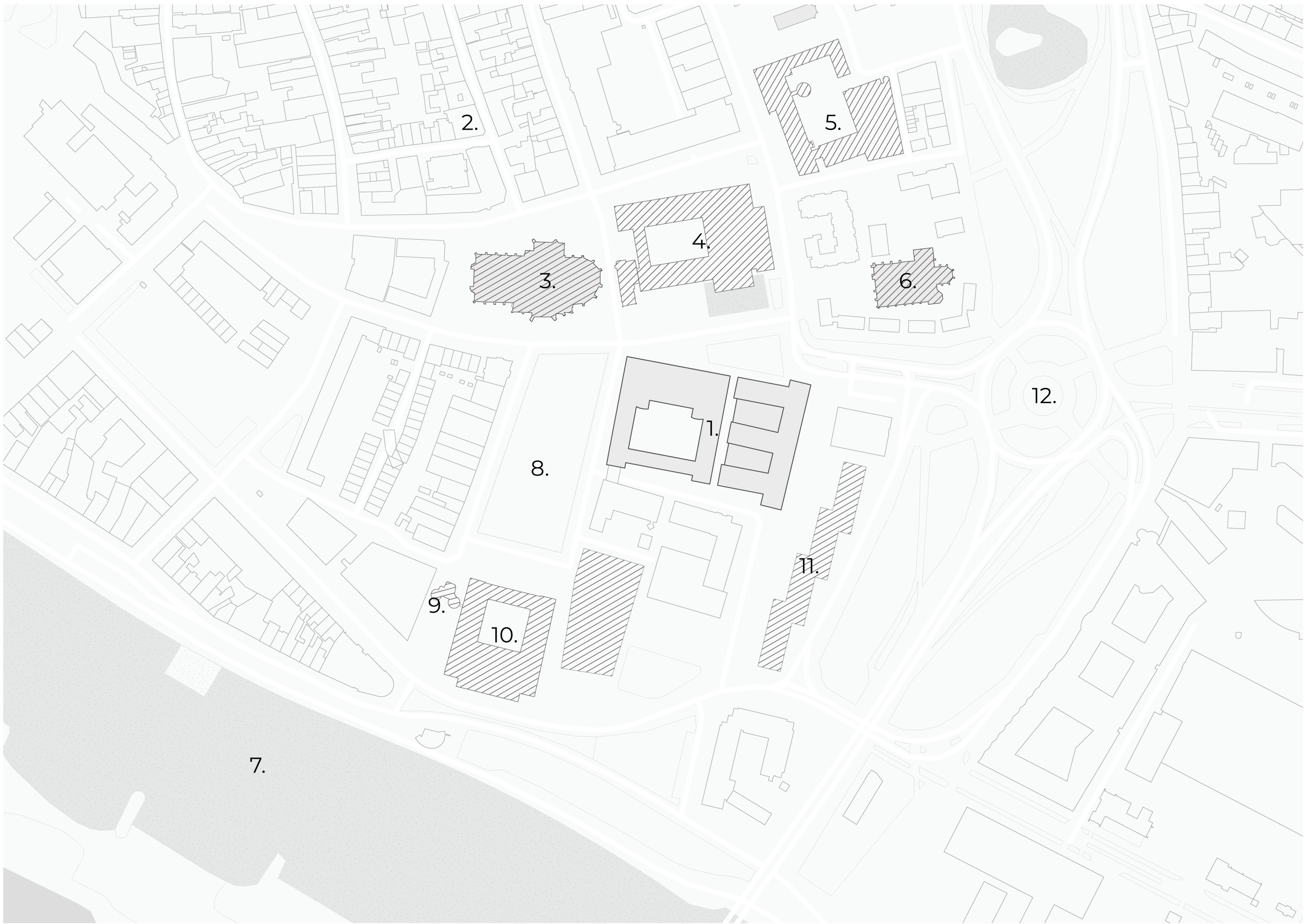








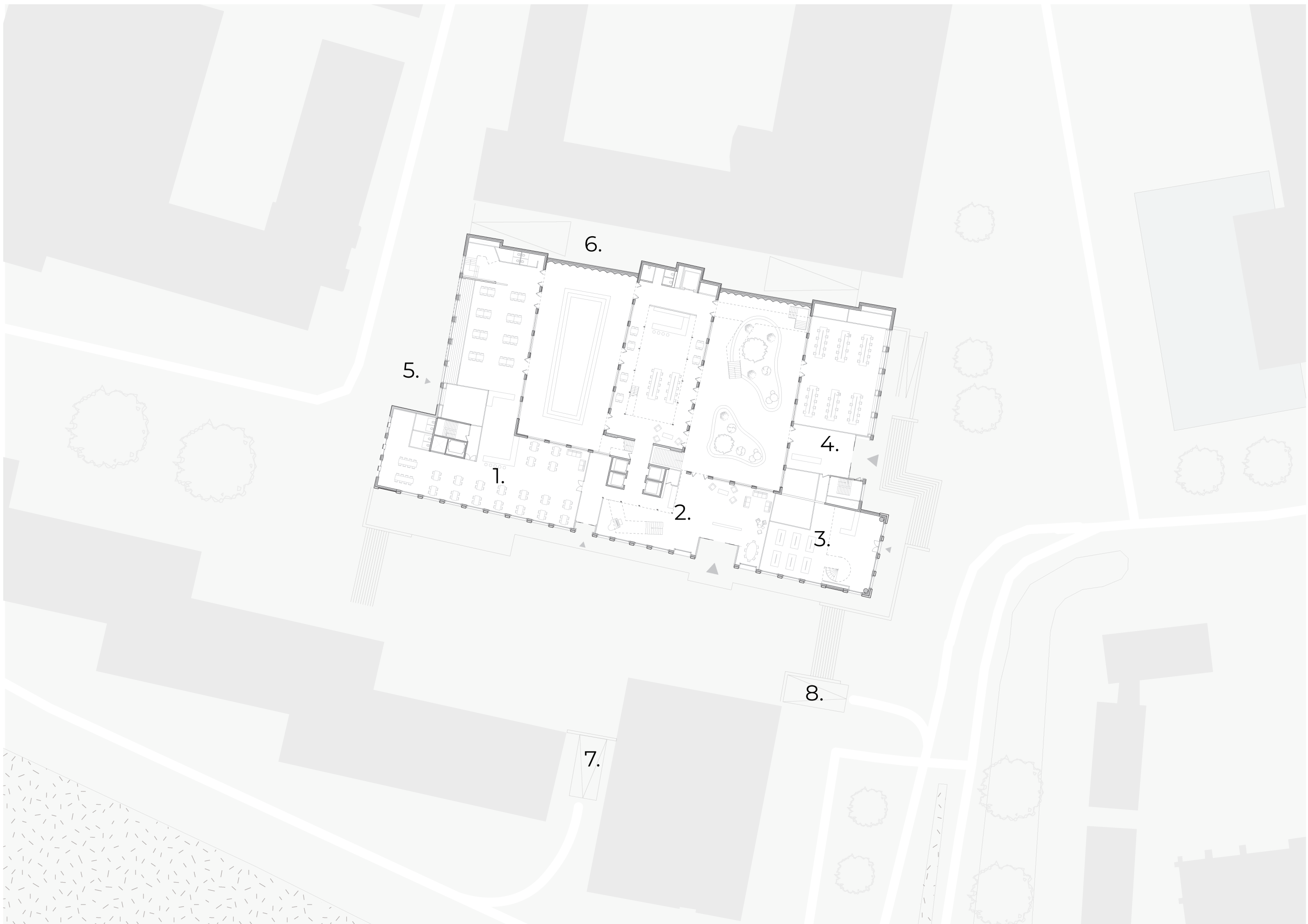
Urban setting 1:2000



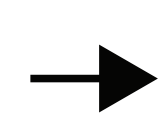
- | | |
|-------------------------|------------------------------------|
| 1. Palace of Justice | 7. Rhine river |
| 2. Historic city centre | 8. Market square |
| 3. Eusebius church | 9. Sabelspoort |
| 4. Municipal office | 10. Provincial government building |
| 5. Police station | 11. Public prosecution department |
| 6. Walburgis church | 12. Airborne monument |



Ground floor in situ 1:500

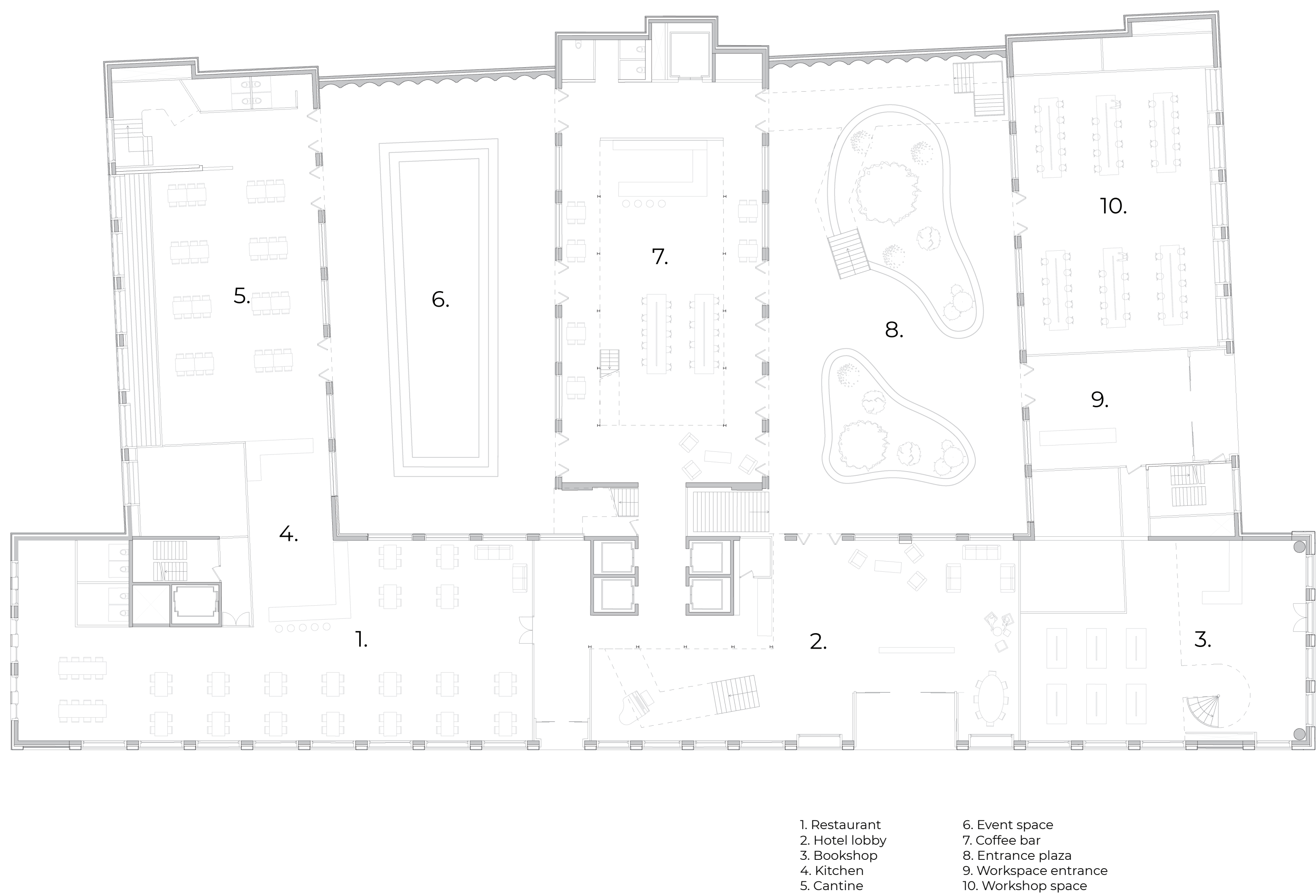


- | |
|---------------------------------|
| 1. Restaurant |
| 2. Hotel lobby |
| 3. Bookshop |
| 4. Workplaces entrance |
| 5. Service entrance |
| 6. Access route to bike parking |
| 7. Parking entrance |
| 8. Parking exit |



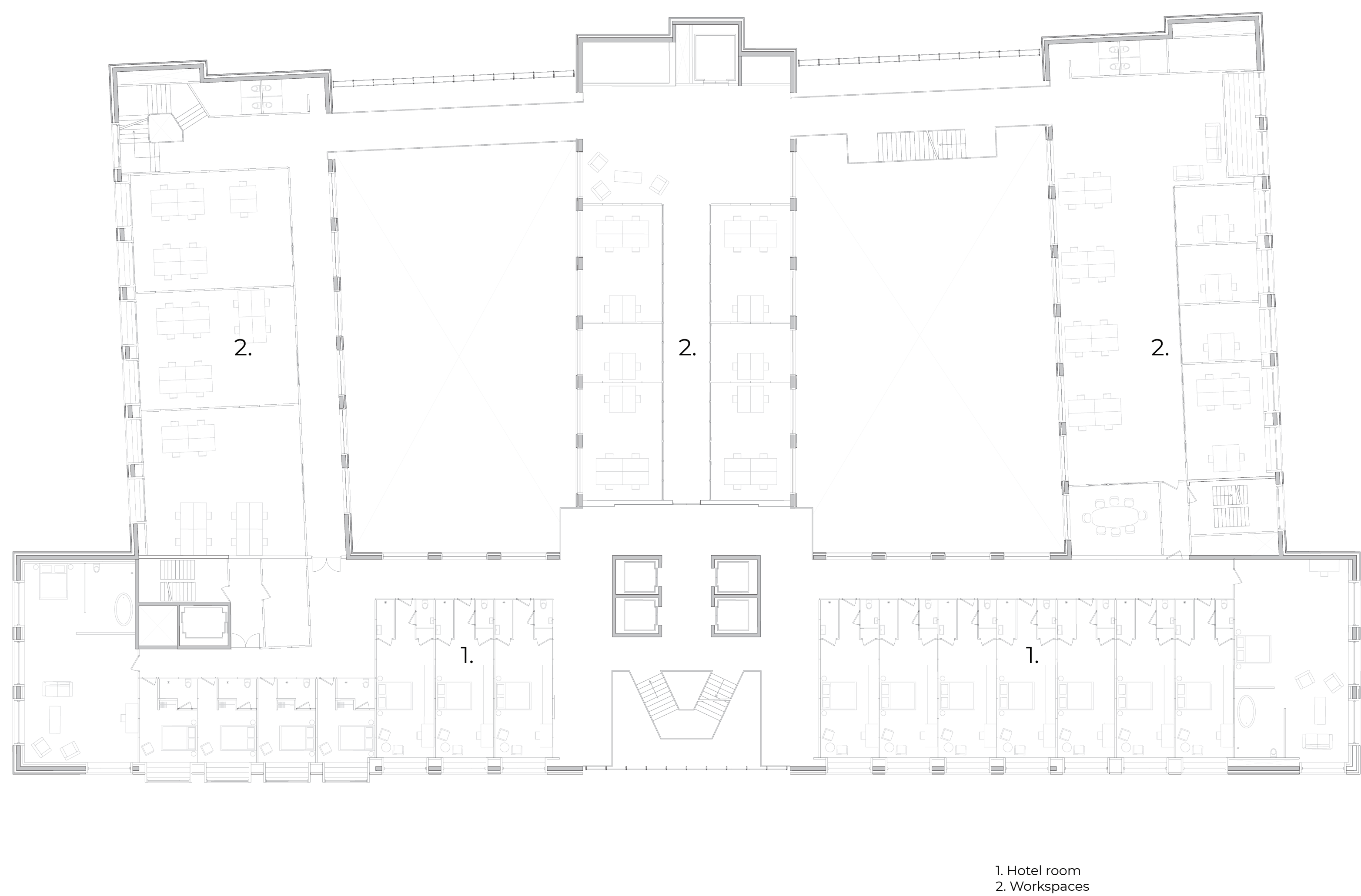
Floorplan
Ground floor

1:200

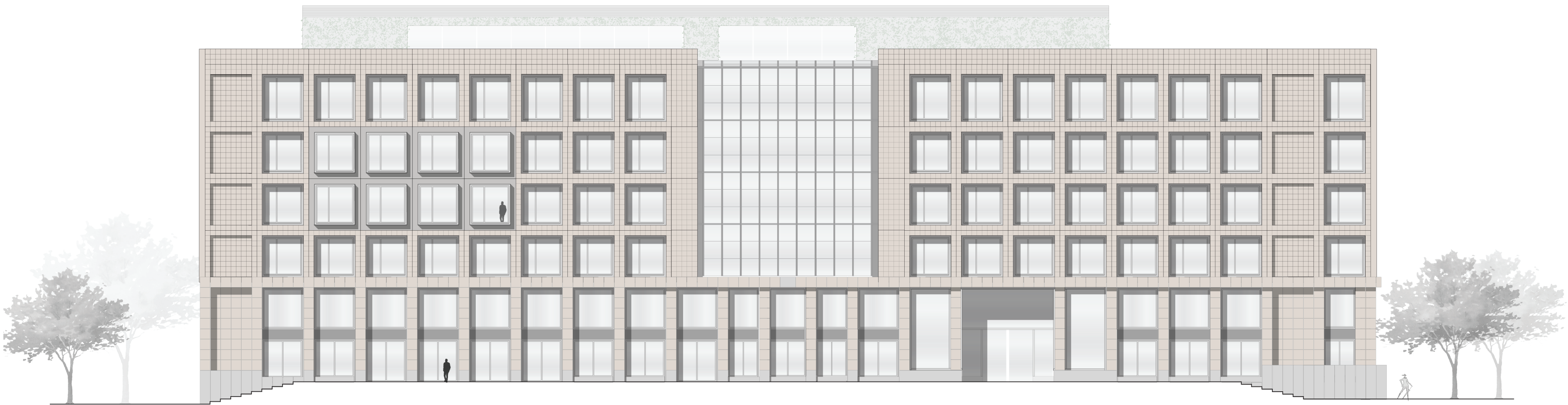


Floorplan
Second to fourth floor

1:200



Elevation 1:200
East facade

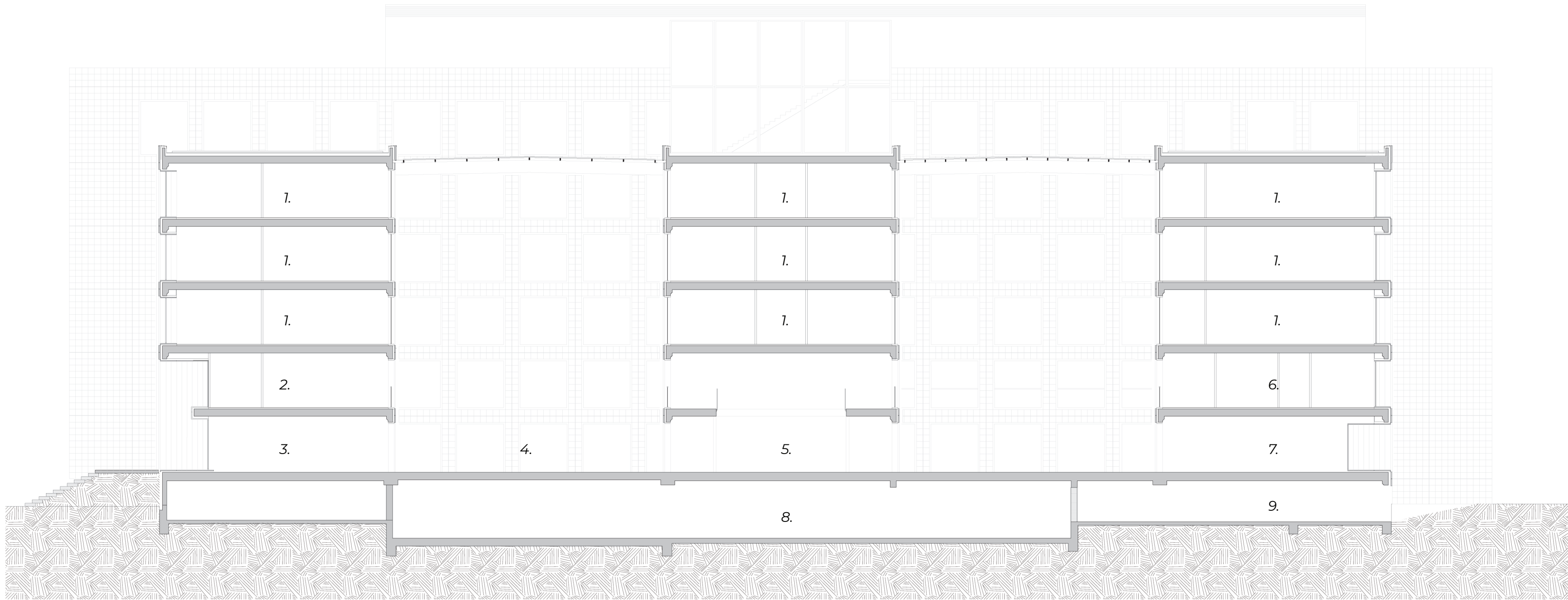


Elevation 1:200
North facade

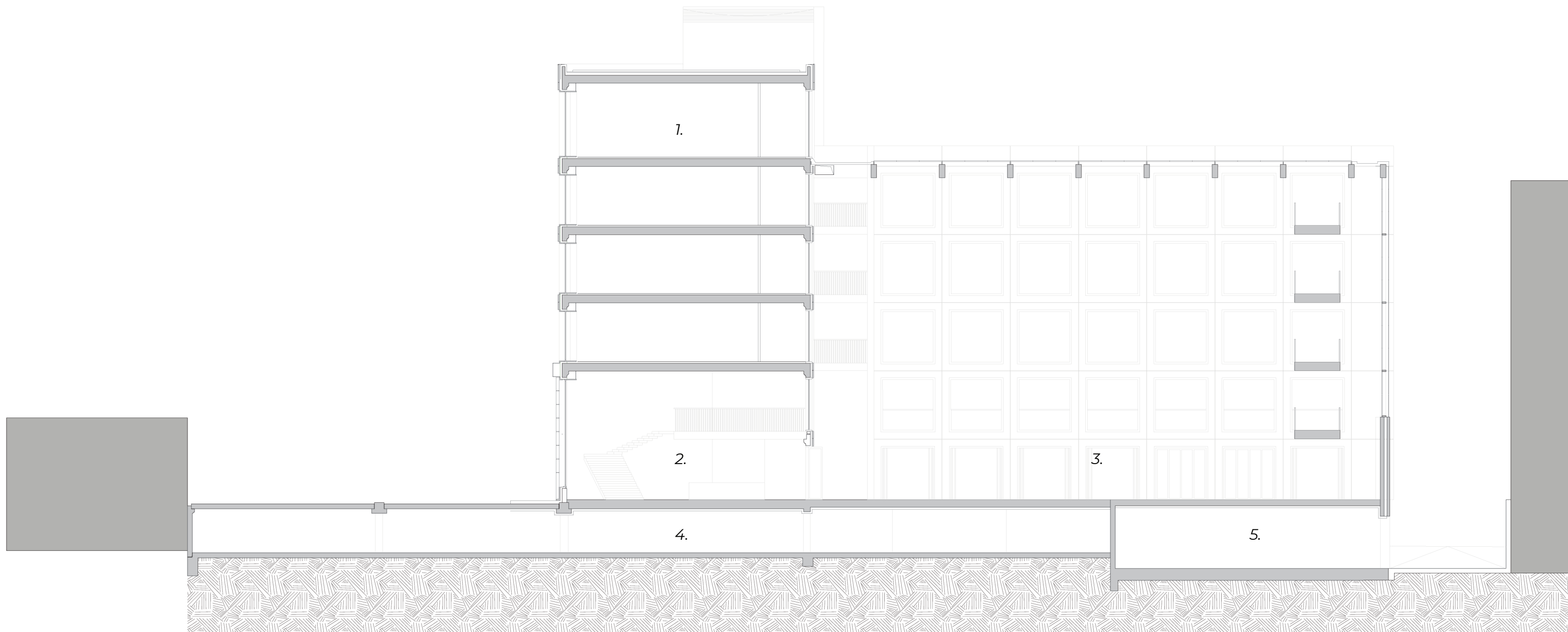
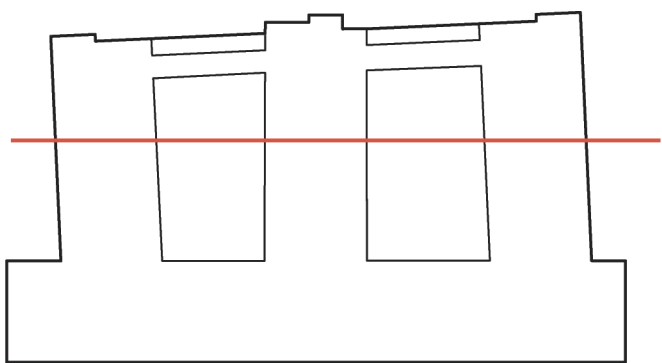


Elevation 1:200
South facade

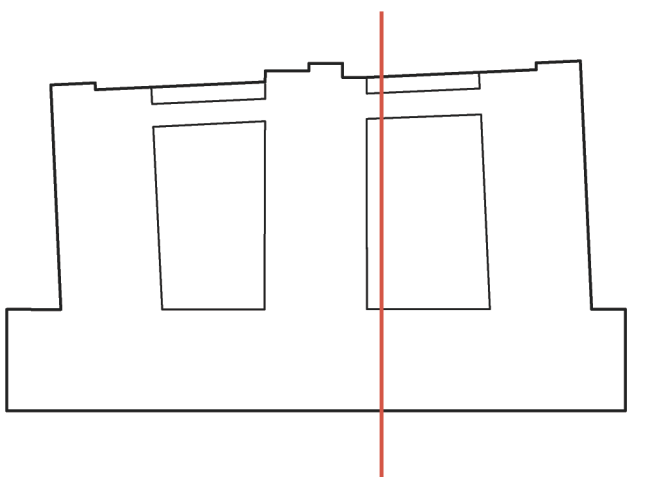


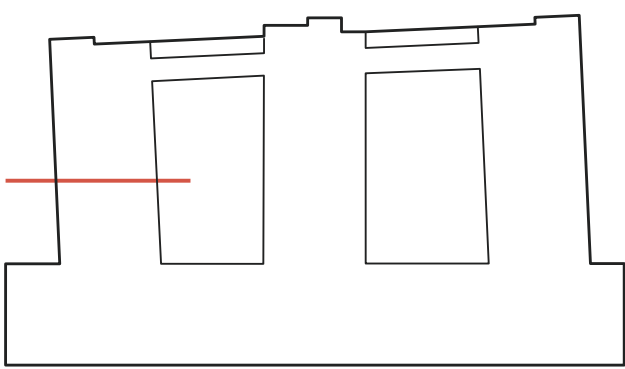
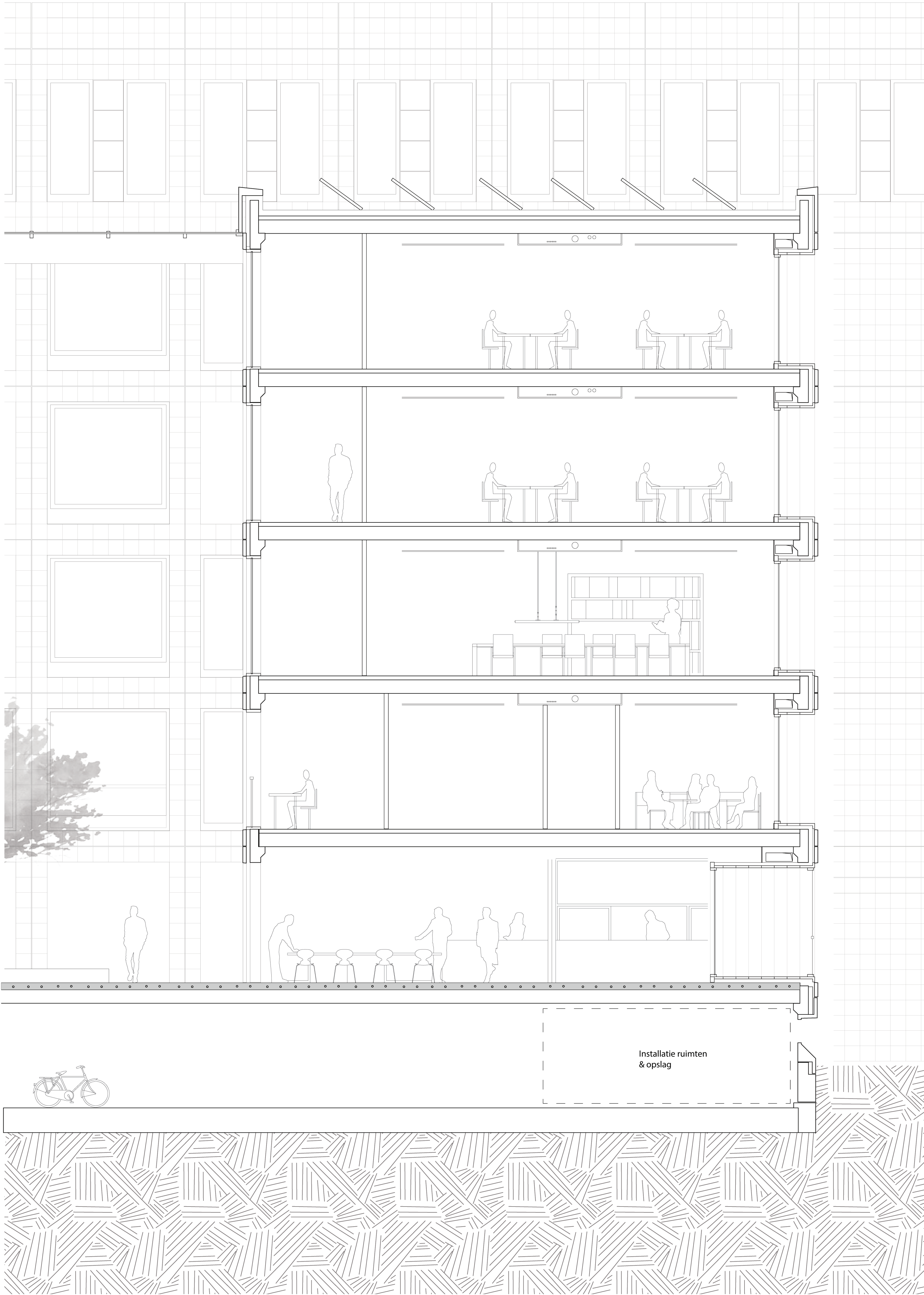


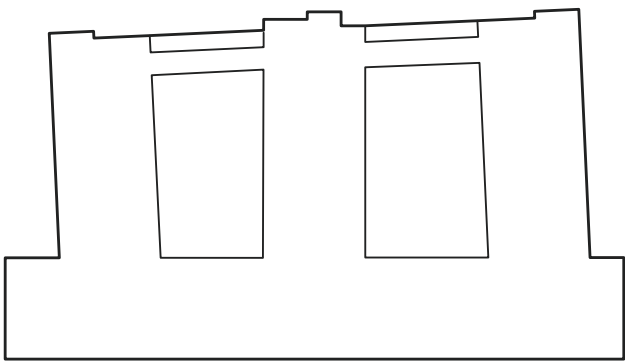
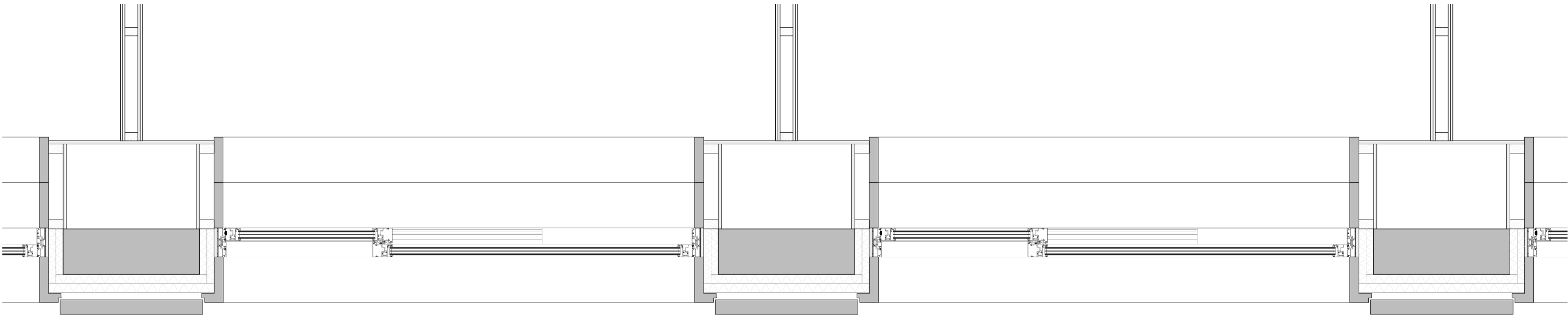
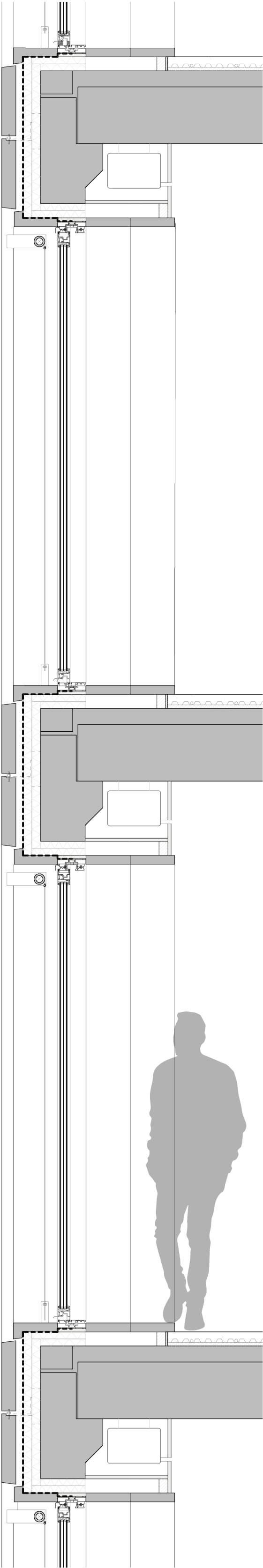
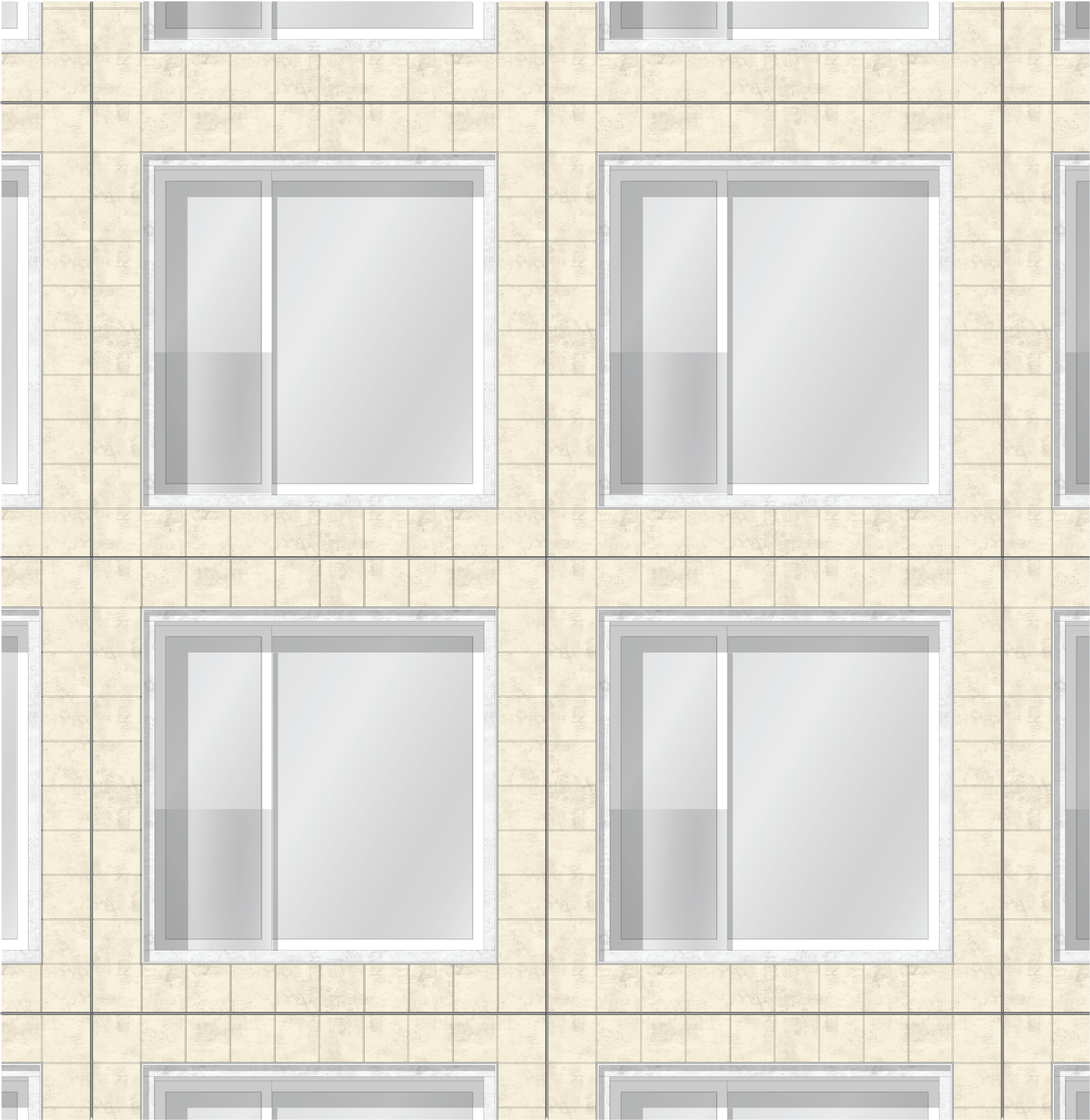
- 1. Workplaces
- 2. Meeting room
- 3. Entrance workplaces
- 4. Entrance plaza
- 5. Coffee bar
- 6. Meeting room / presentation
- 7. Canteen
- 8. Bike parking
- 9. Storage / technical room

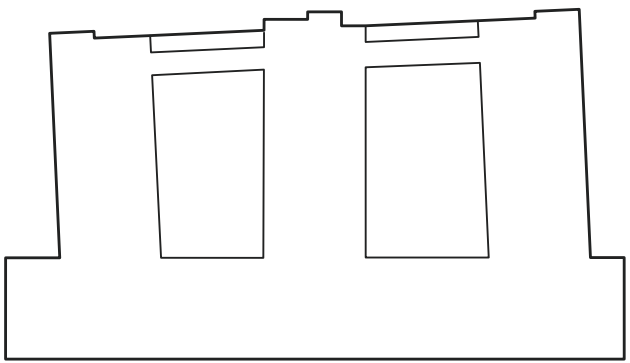
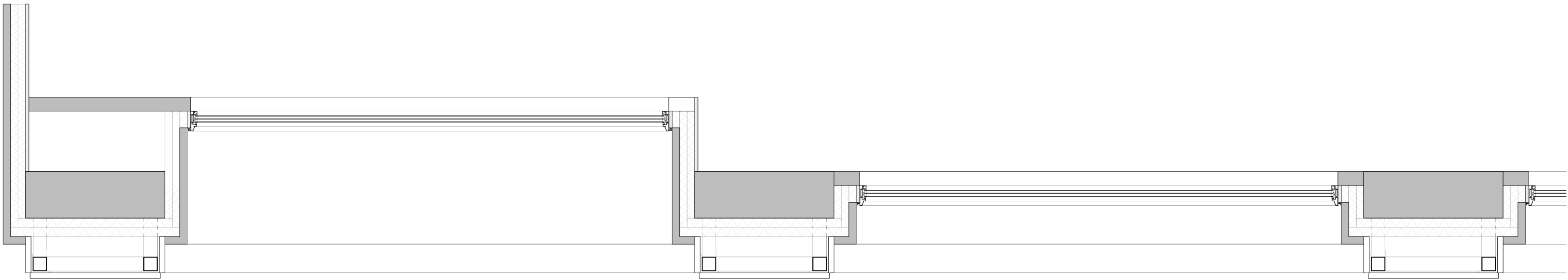
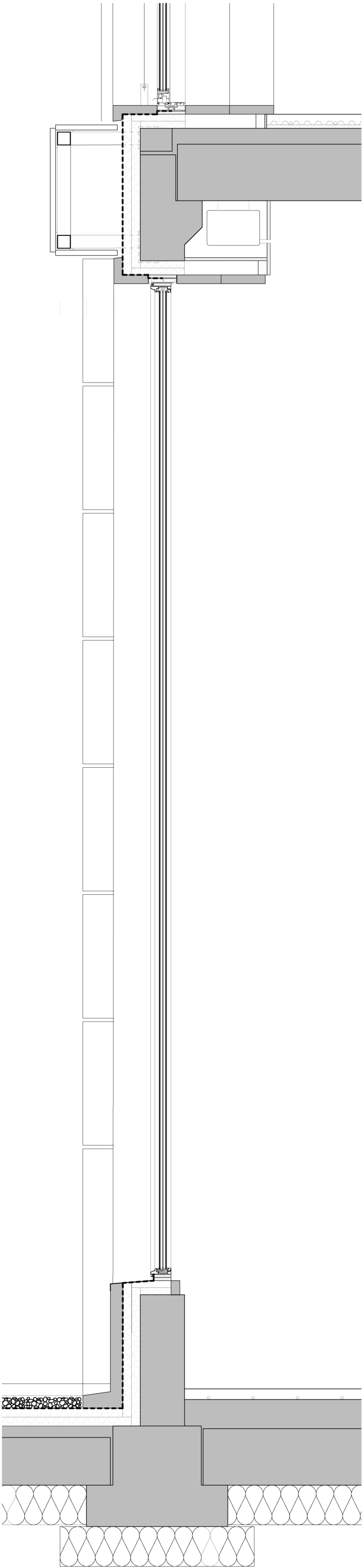


- 1. Hotel room
- 2. Hotel lobby
- 3. Entrance plaza
- 4. Car parking
- 5. Bike parking

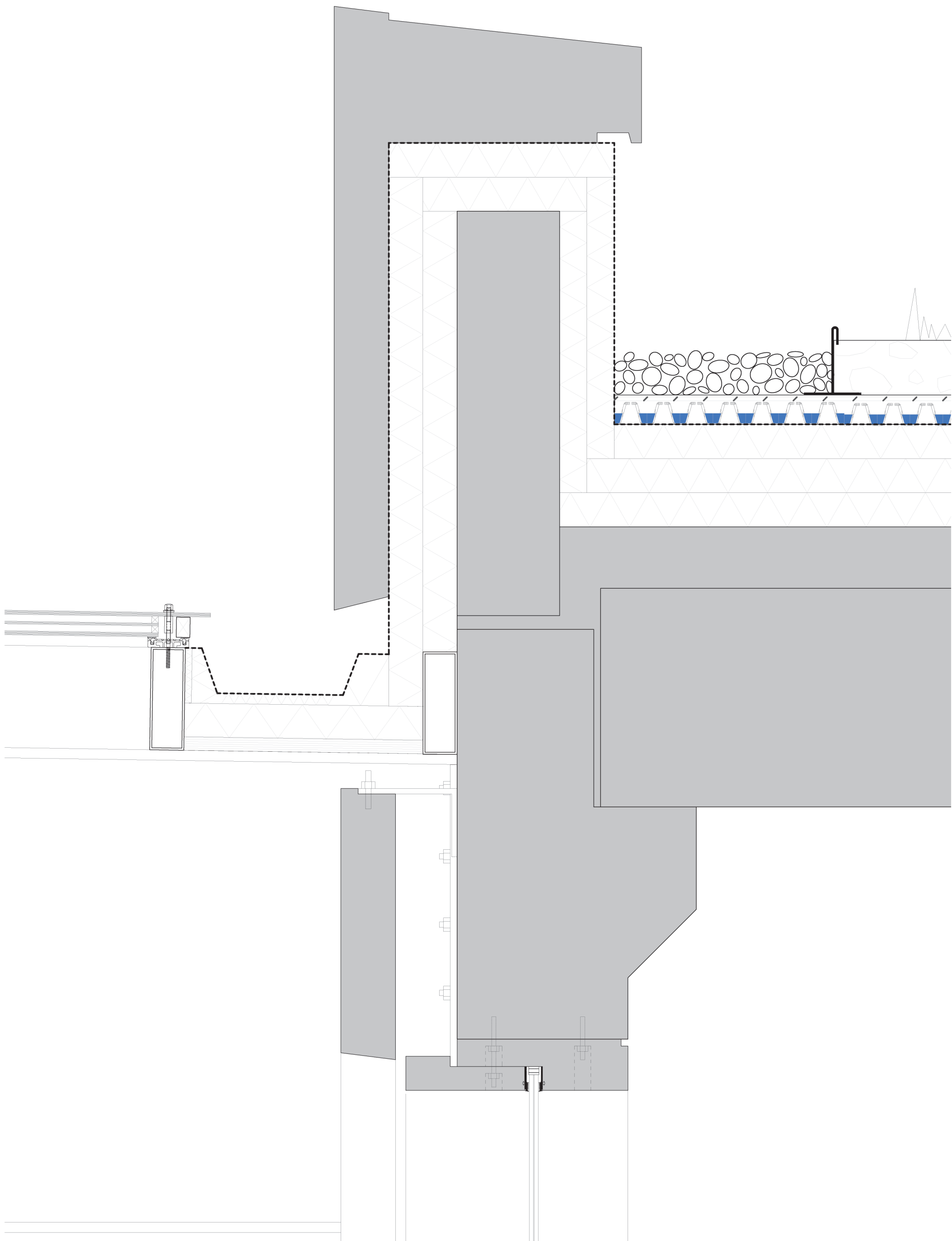






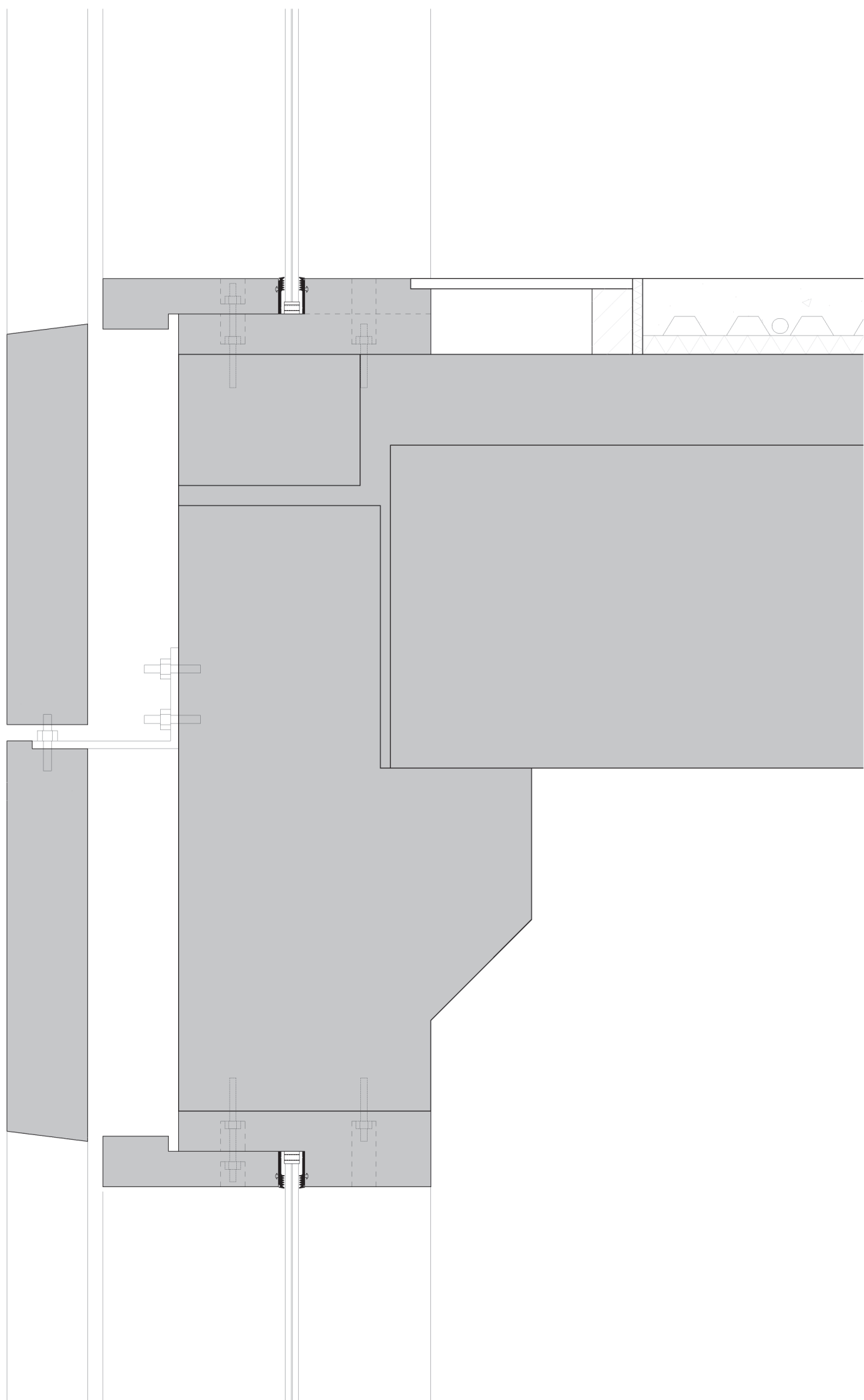


Detail 1:5
Courtyard roof - building connection

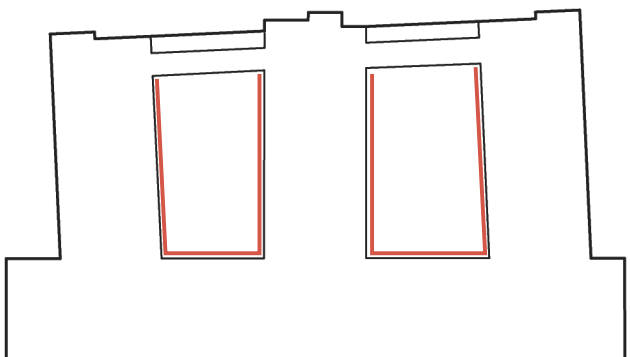


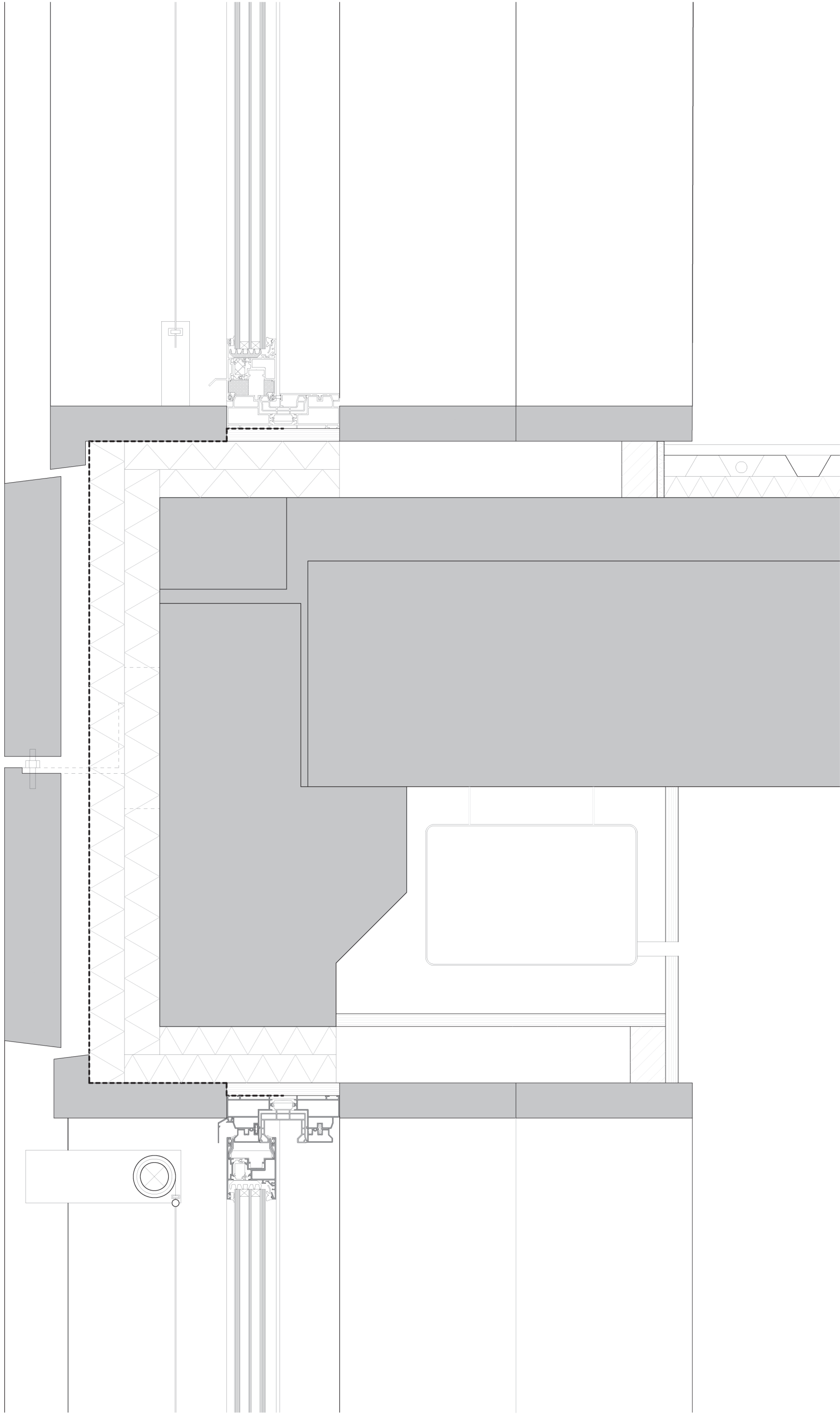
1. Roof		
Solar panels		
Substructure solar panels		
Sedum roof vegetation		
Extensive substrate	80 mm	
Floradrain FD 25-E	40 mm	
Calostat insulation board	150 mm	C2C Gold certificate
Concrete floor	410 mm	Direct reuse
2. Courtyard roof		
BIPV Triple glazing	44 mm	0.7 W/m²k
Steel support tube 150 x 50	150 mm	Direct reuse
Steel beam HEB 700 (1,6 degree slope)	700 mm	Direct reuse
3. Atrium roof - building connection		
Sealing layer		
Calostat insulation board (0,019 W/mK)	150 mm	C2C Gold certificate
Steel sub structure 150 x 50	150 mm	Direct reuse
Laminated wood boarding	18 mm	
Concrete roof trim	900 mm	Direct reuse
Calostat insulation board (0,019 W/mK)	100 mm	C2C Gold certificate

Detail 1:5
Courtyard facade opening

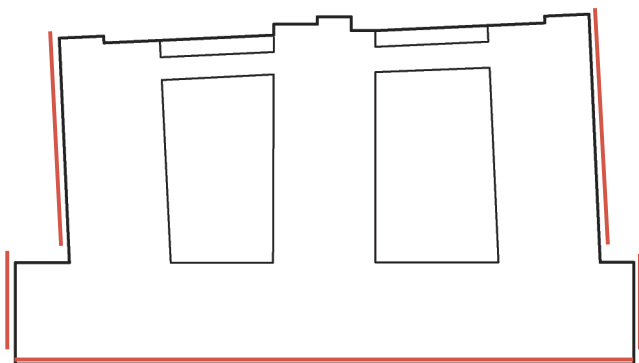


1. Facade open		
Concrete window frame	80 mm	Recycled
Laminated safety glass 66.2	12 mm	
2. Floor		
Screed - polished finish	60 mm	Recycled
Floor heating	15 mm	
Acoustic insulation	20 mm	
Concrete floor (incl. screed)	410 mm	Direct reuse
3. Facade closed		
Concrete facade cladding	80 mm	Direct reuse
Support structure	90 mm	Direct reuse
Concrete prefabricated wall	250 mm	Direct reuse



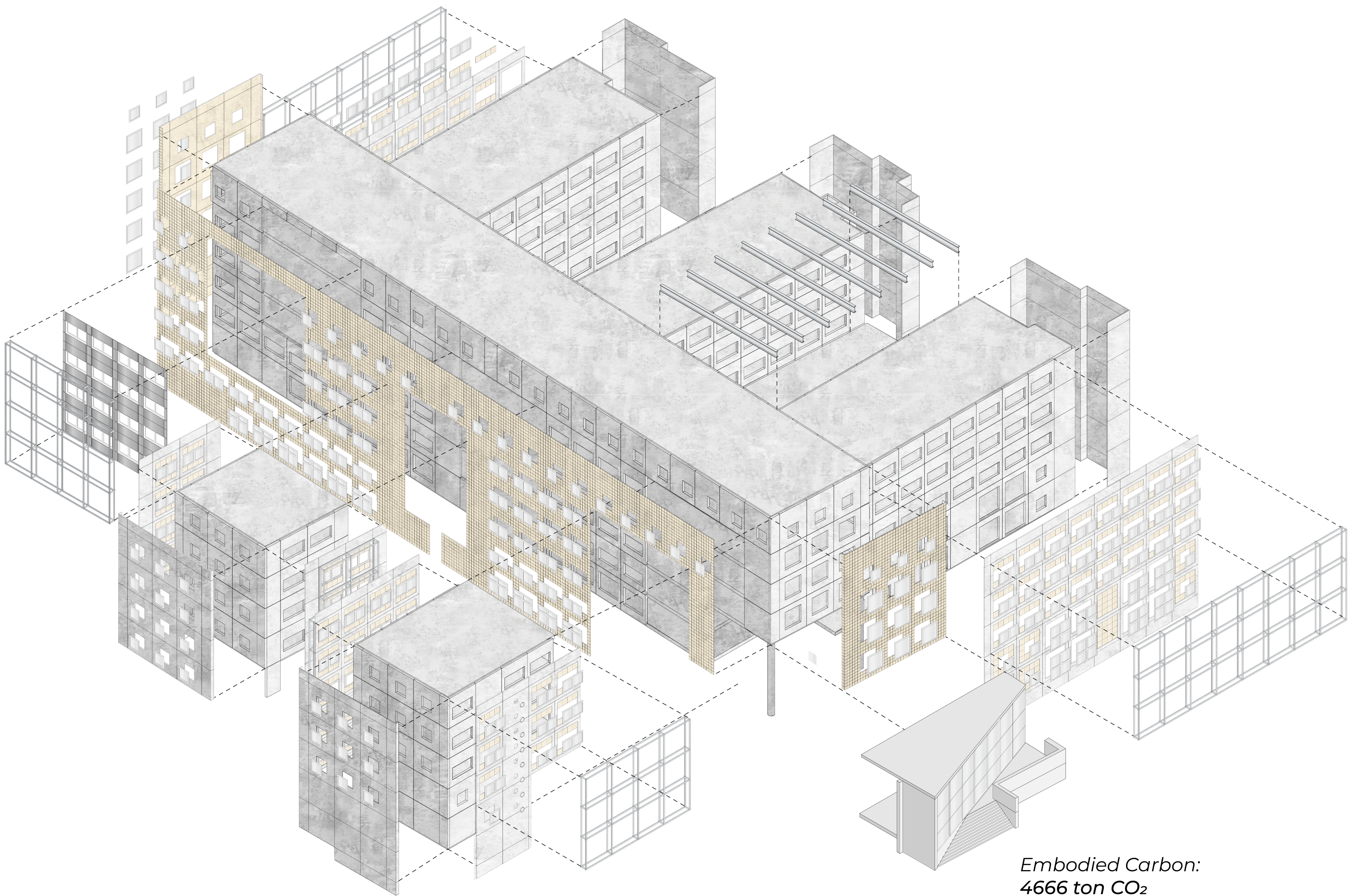


1. Facade open		
Prefabricated concrete cladding	50 mm	Recycled
Timber substructure	80 mm	Recycled
Calostat insulation board (0,019 W/mK)	80 mm	C2C Gold certificate
Sliding door - Aluminium frame	80 mm	Recycled
Triple glazing	44 mm	0.7 W/m²k
2. Floor		
Cement tiles 900 x 900	15 mm	Recycled
Modular floor heating	35 mm	
Acoustic insulation	25 mm	
Concrete floor (incl. screed)	410 mm	Direct reuse
3. Facade closed		
Concrete facade cladding	80 mm	Direct reuse
Cavity	40 mm	
Support structure	90 mm	Direct reuse
Calostat insulation board (0,019 W/mK)	80 mm	C2C Gold certificate
Concrete prefabricated wall	250 mm	Direct reuse



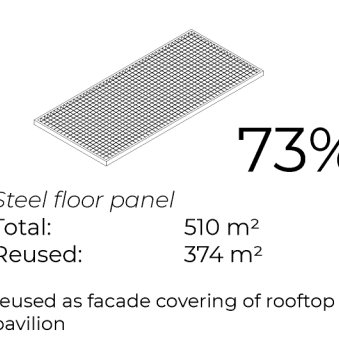
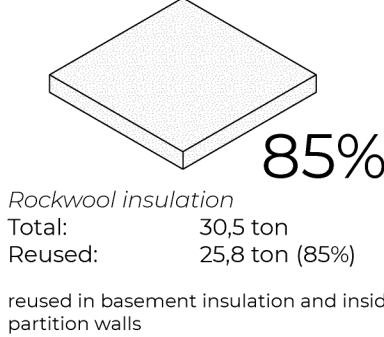
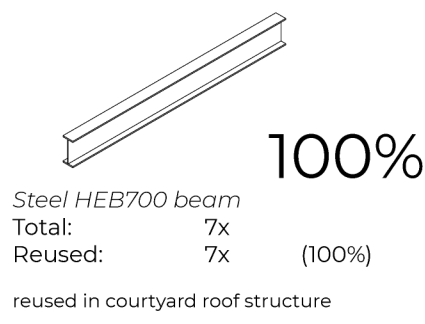
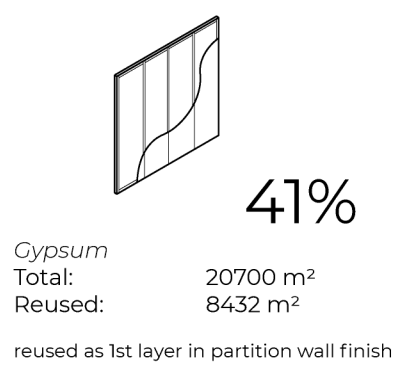
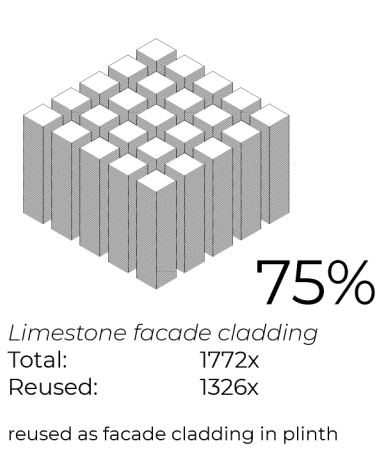
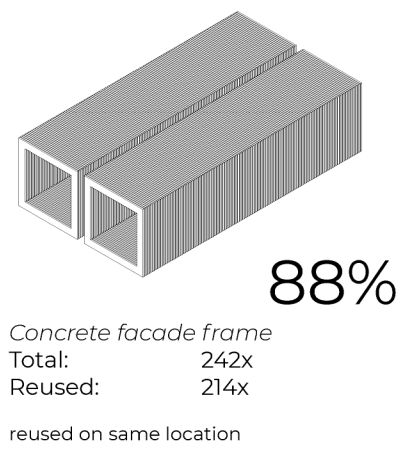
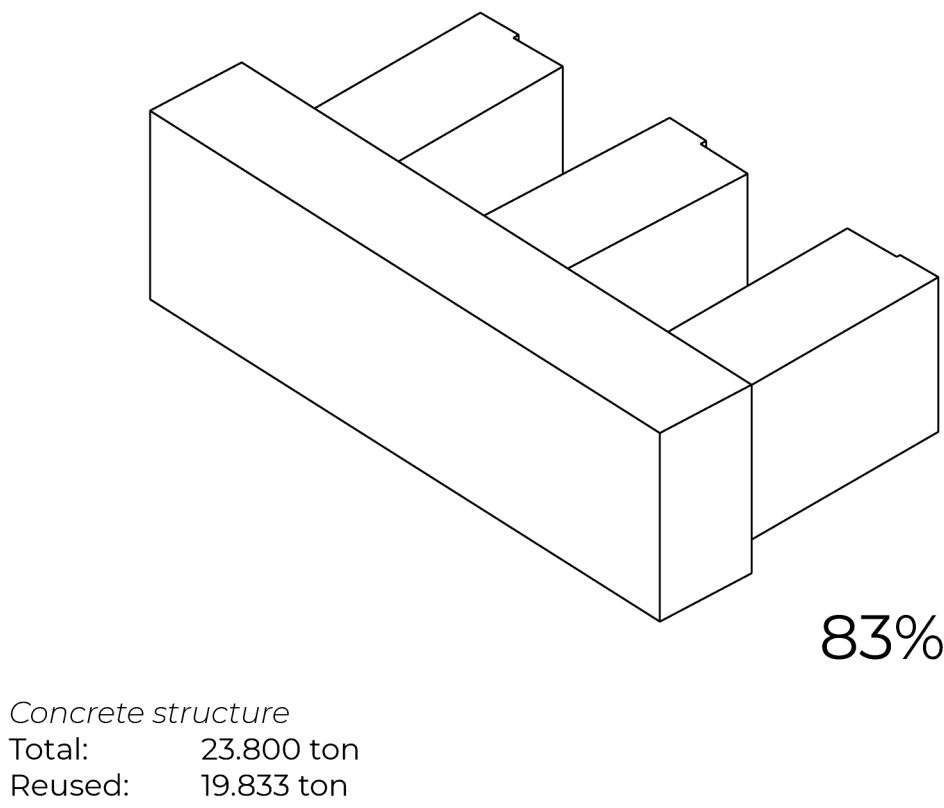
Circular material strategy

Retrieved materials

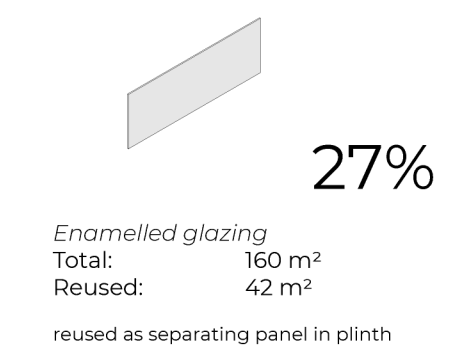
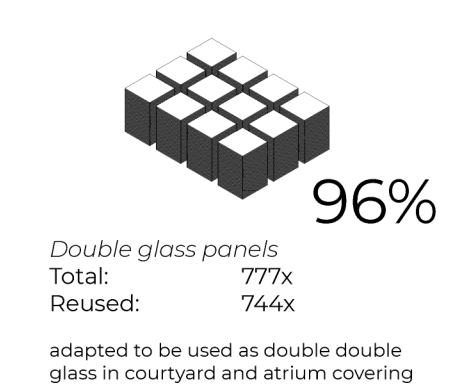
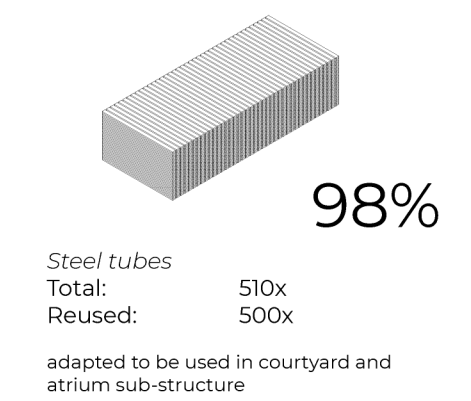
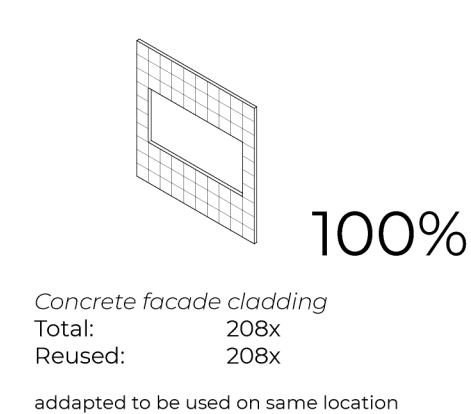


Reuse cycles

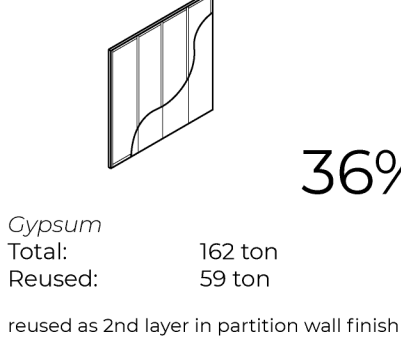
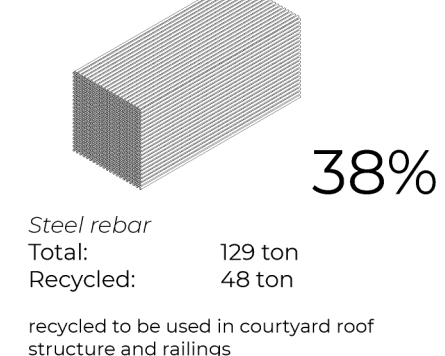
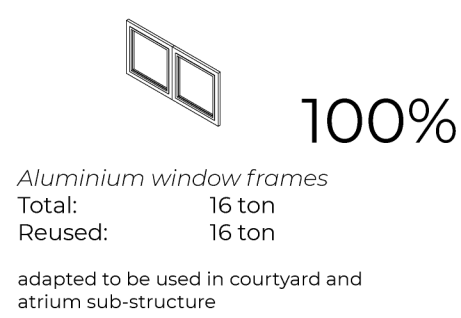
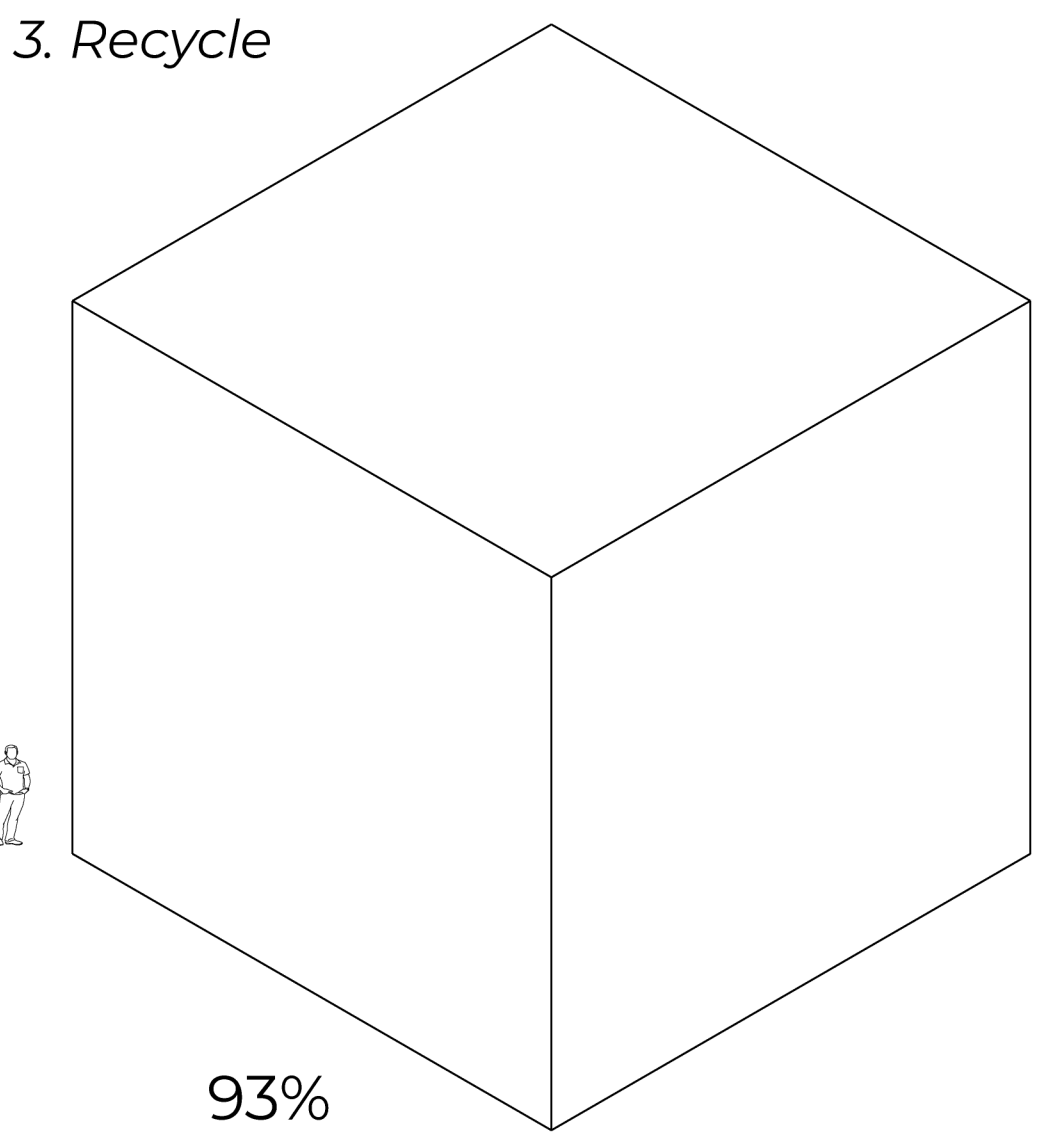
1. Reuse



2. Remake



3. Recycle



Process development

