

AVITAL
VEIN FOR
ASPARUHOVO



A STRATEGY FOR EVERYONE







28 June 2016 Last updated at 14:52 GMT

Bulgaria floods: At least 12 killed in Varna and Dobrich



Footage showed floodwater rushing through the streets and cars piled up

At least 12 people have died and several are missing after torrential rain and heavy floods hit eastern Bulgaria, officials say.

Floodwaters in the Black Sea port city of Varna surged up to 1m (3.2ft).

Many residents had to be rescued as cars were swept away. Hundreds have been left without electricity or food.

There have been hailstorms and heavy rain in several parts of Bulgaria in recent days. Forecasts say the extreme weather is set to continue.

Ten people died in Varna, including two children. There were also at least another two deaths reported a few miles north in Dobrich, where electricity was down and water was said to be flowing through the streets.

Forecasters said that the equivalent of a month's rain fell in the regions of Varna and Burgas over the past 24 hours.



The fast-rising flood waters took many in Varna by surprise

Top Stories

Article summary text for a top story, including a small image and a play button icon.

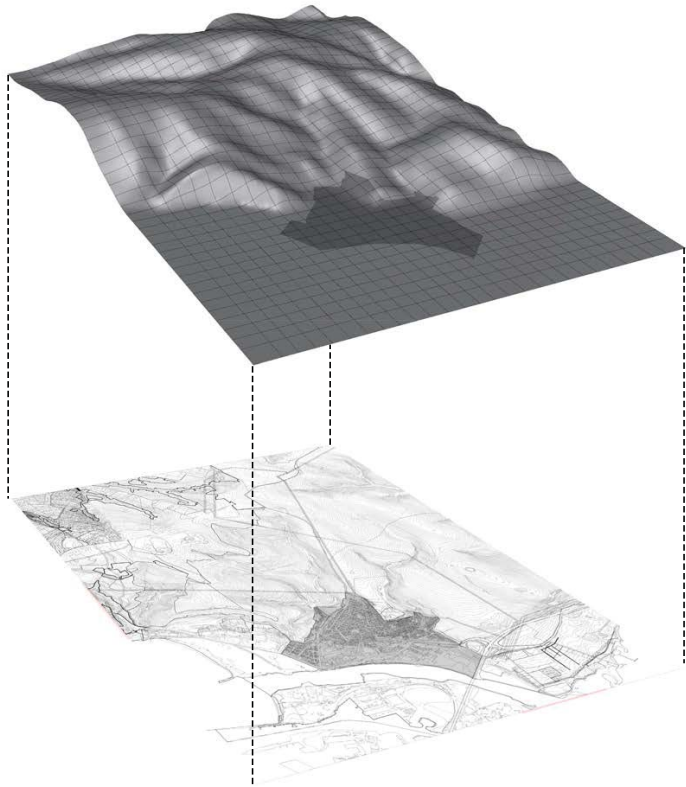
Features & Analysis

A list of featured articles with small thumbnail images and titles.

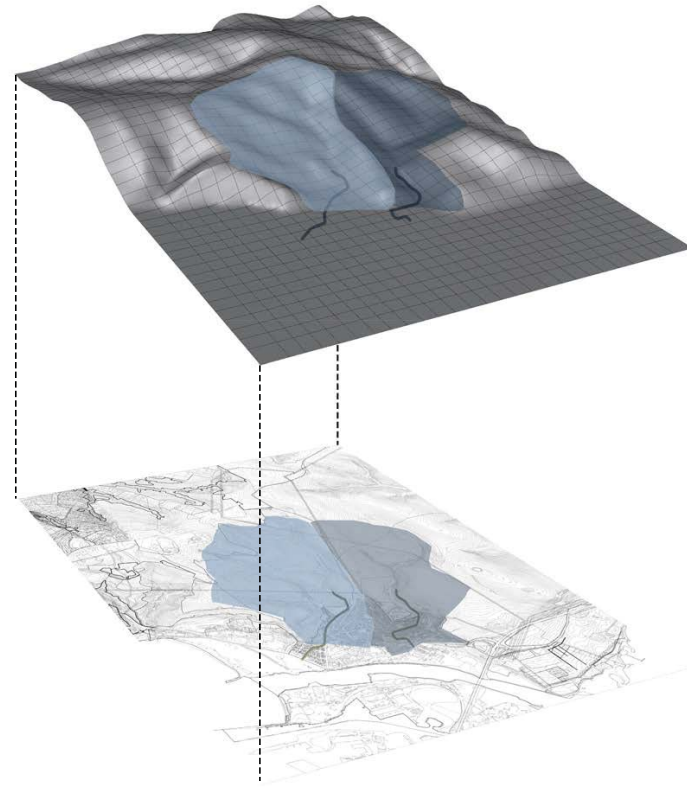
Most Popular

A list of popular articles with small thumbnail images and titles.





Positioning of Asparuhovo at the bottom of the hills

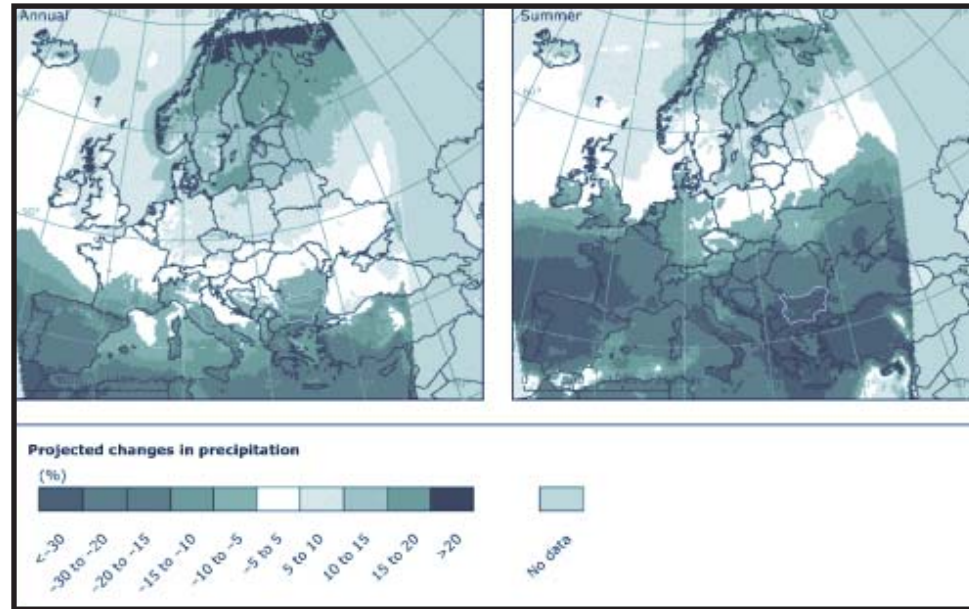


Stormwater catchment area for both gullies





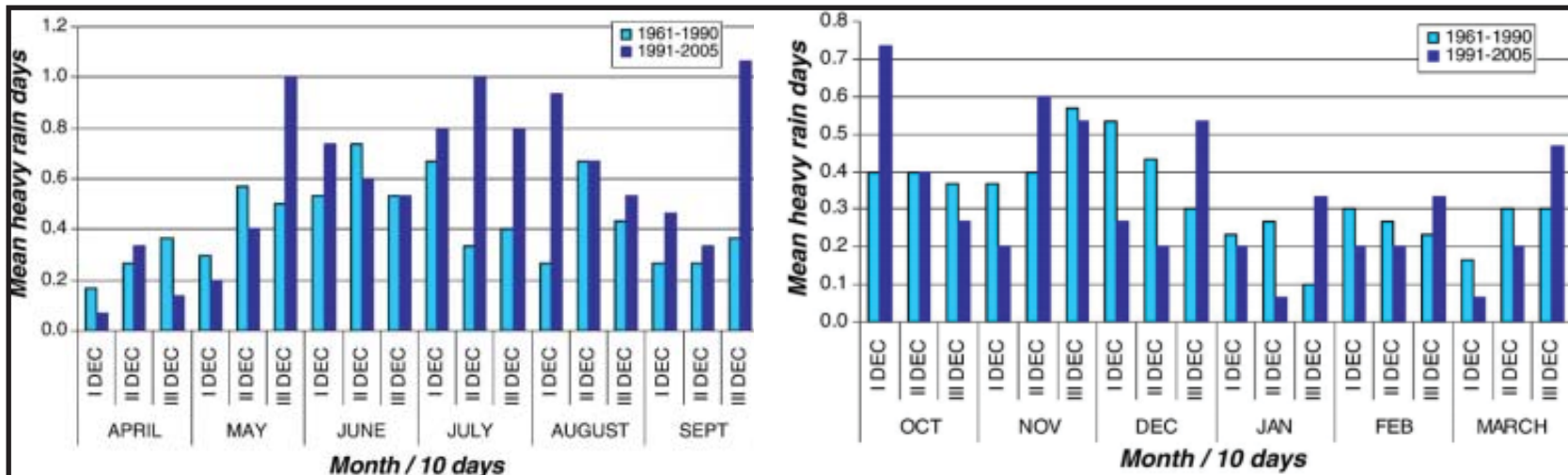
CLIMATE CHANGE



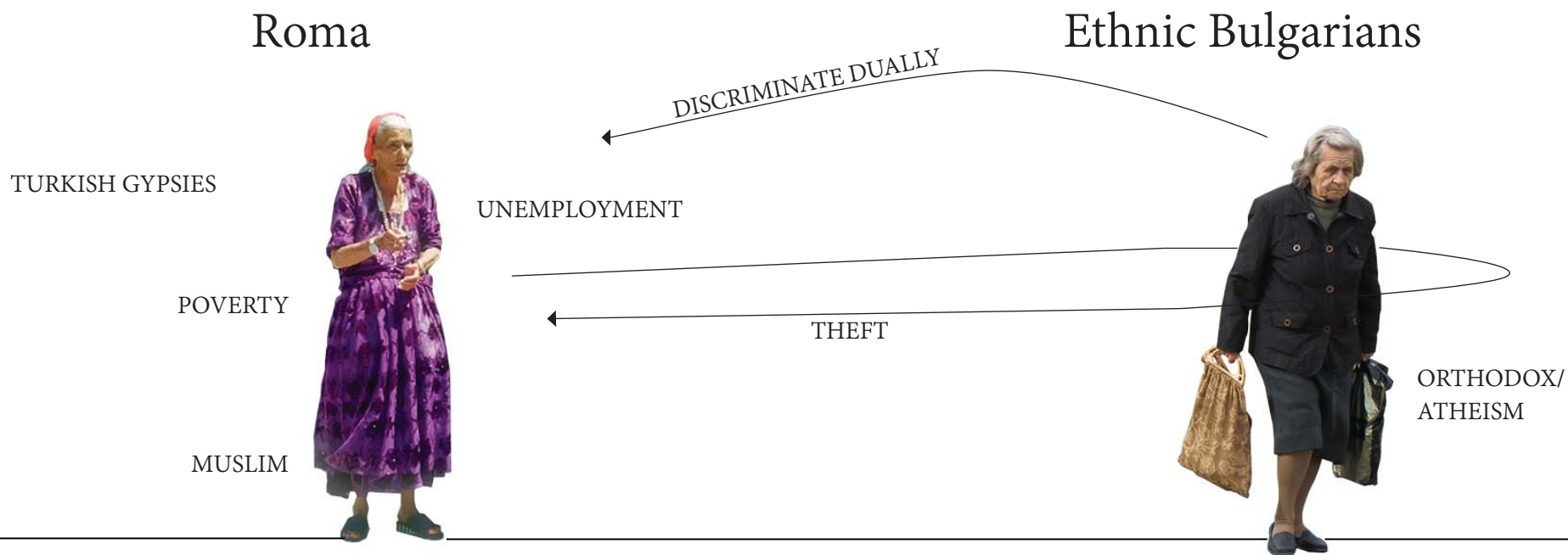
DRYER SUMMERS ↑

BUT

↓ HEAVIER RAIN



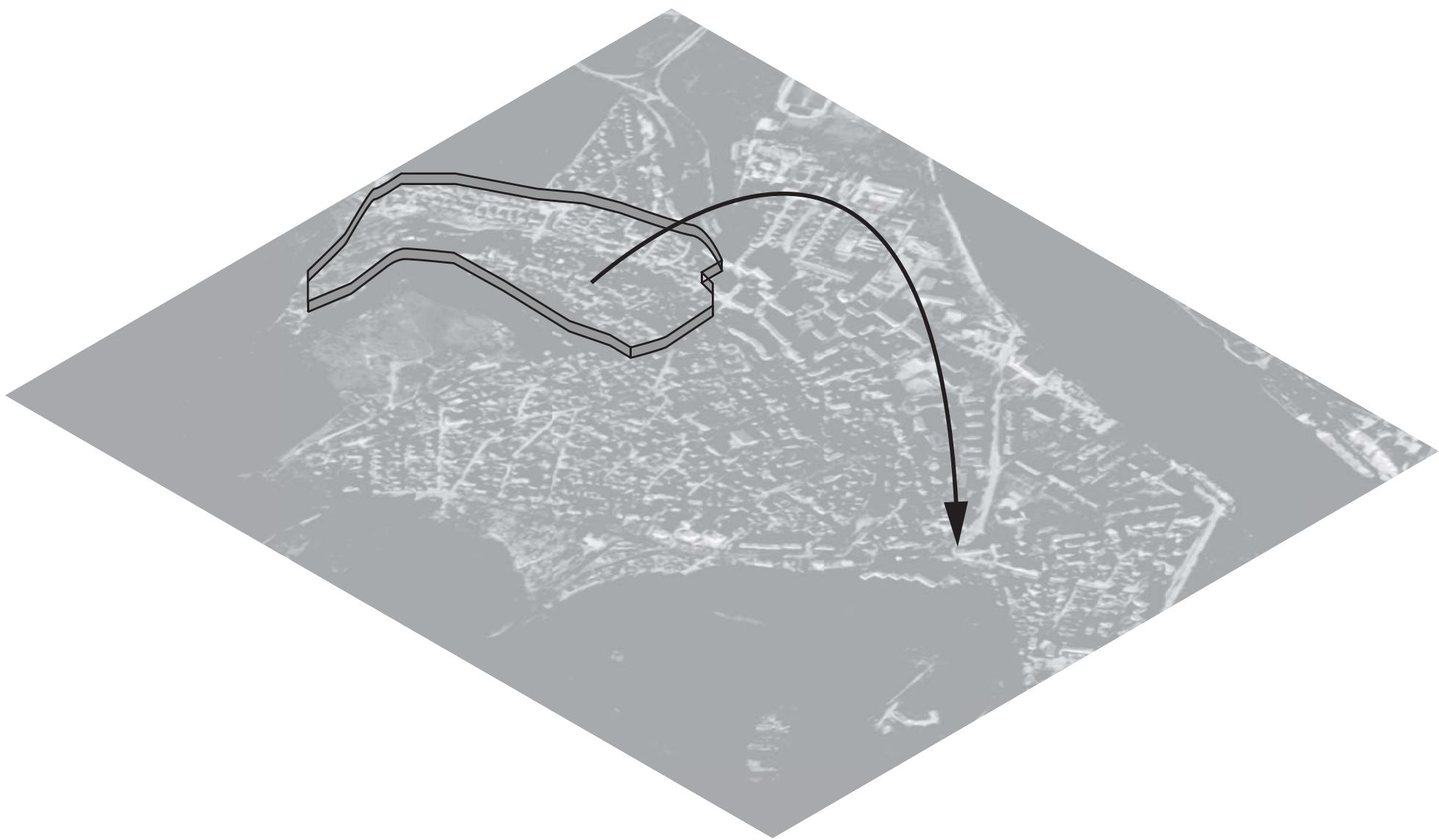
Current issues between Roma & Ethnic Bulgarians



Design goal: establishing first actual contact by seducing Roma out of their ghettos and to create interfaces in the daily lives.



- Residential Building
- Legal Family Housing
- Commercial (shops etc.)
- (Illegal) Family Housing (Roma)
- Empty space



--West gully--

- ~ Situated in gypsy neighborhood
- ~ Narrow streets, no space for gully
- ~ Difficult socially isolated community

Gully intervention would mean:

- ~ Too handle the rainwater, an underground rainwater system has to be built

or

- ~ A spatial system can be developed but houses have to be demolished

--East gully--

- ~ Situated in a regular neighborhood
- ~ Broad streets, enough space for gully
- ~ Socially diverse
- ~ Center of Asparuhovo

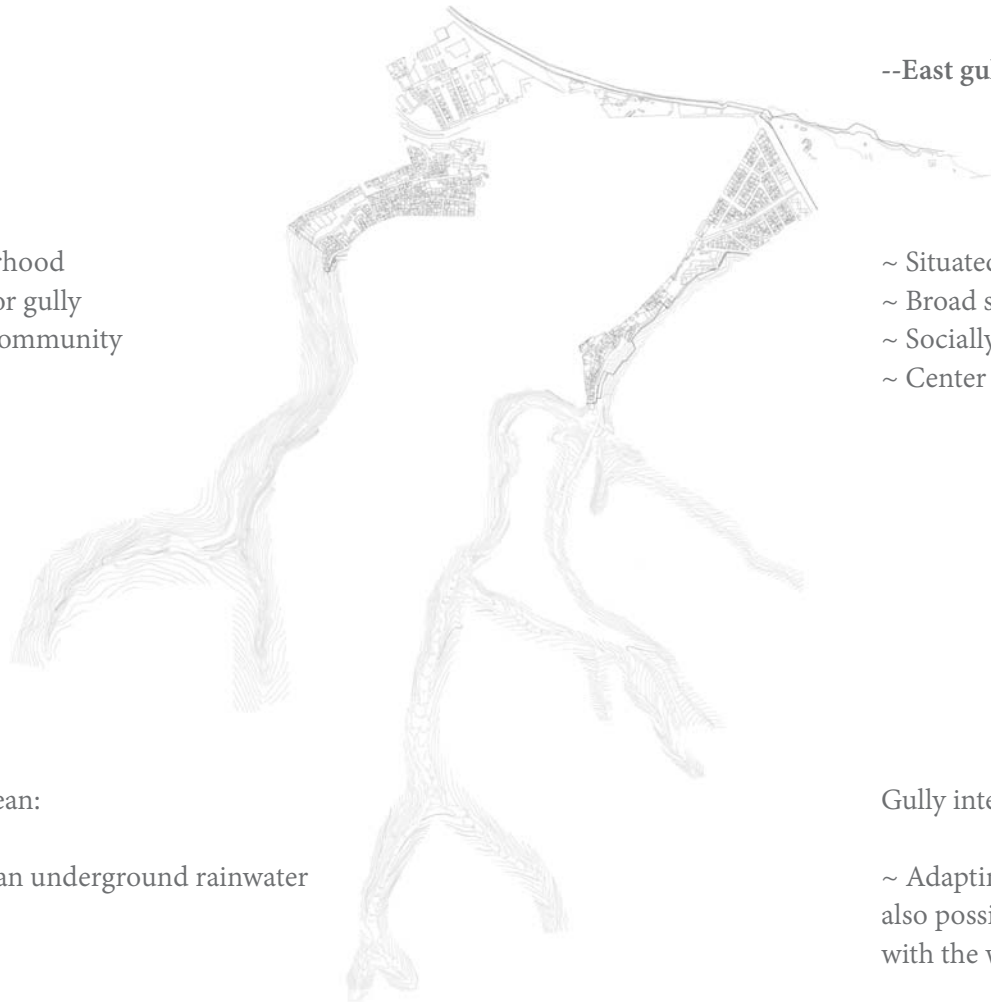
Gully intervention would mean:

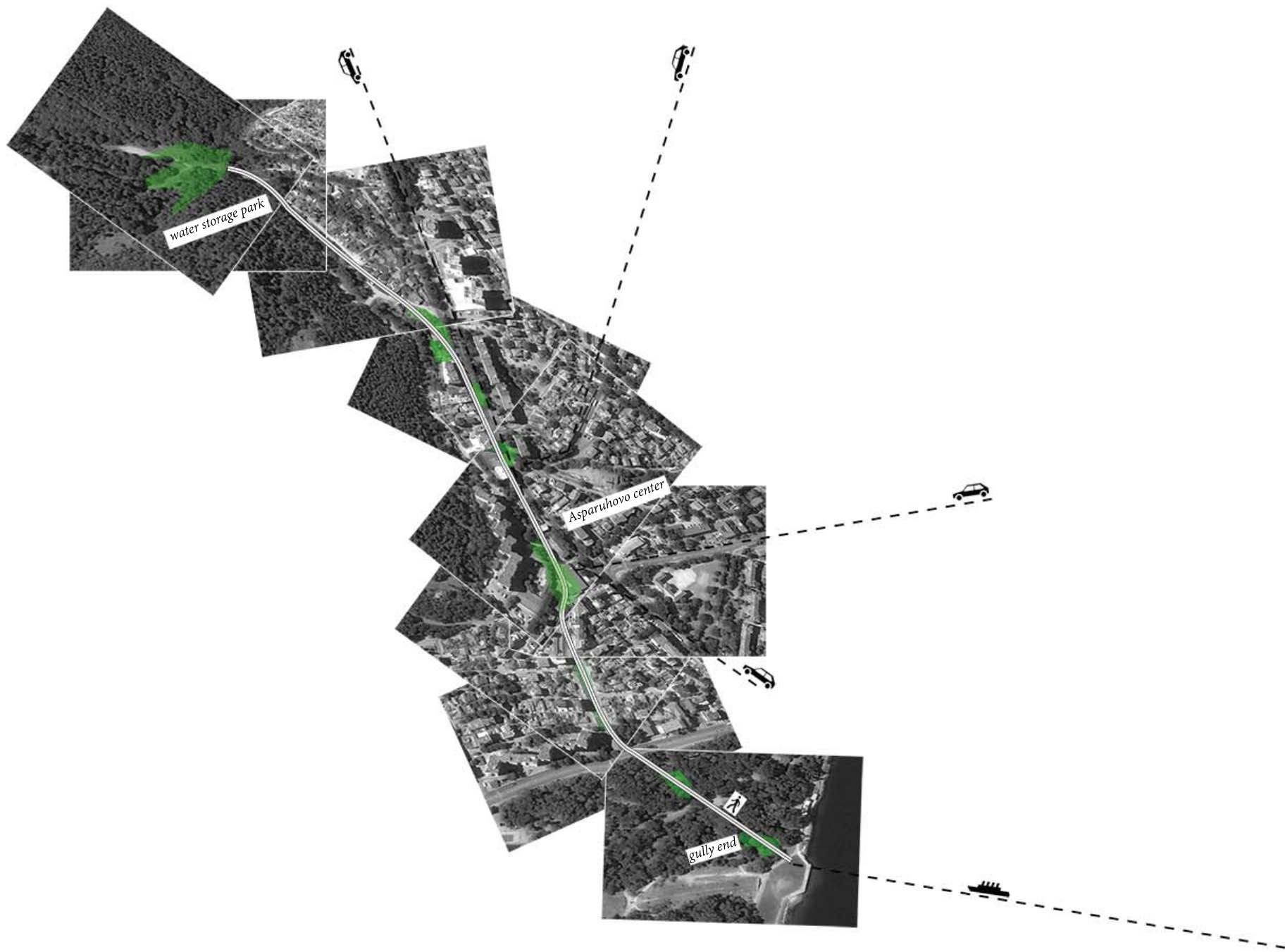
- ~ Adapting the watersystem to a sufficient system, but also possibilities for other interventions in combination with the watersystem

Conclusion

- ~ The two gullies are two totally different systems with different assignments, spatial layouts and social conditions
- ~ There are no realistic possibilities in creating one united system

>> I will make a design for the east gully, because of the more interesting possibilities





water storage park

Asparuhovo center

gully end

How to develop a *spatial green-blue system* for Asparuhovo, that takes into account the *social- economic conditions* and the *cultural identity*, and simultaneously introduces an *attractive new urban landscape*?

1 WATER ASPECT

#2 SOCIAL ASPECT

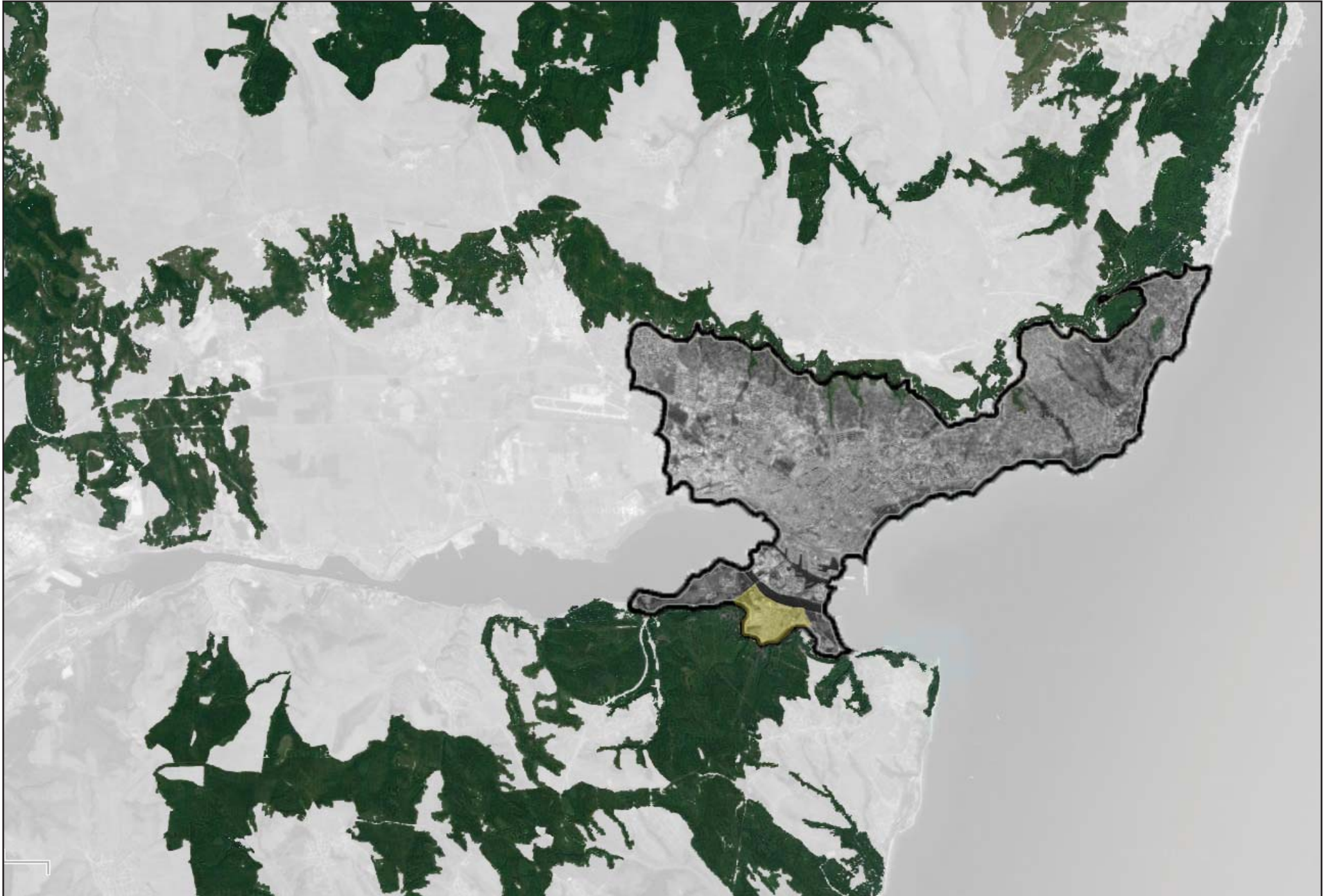
#3 CONNECTIVITY ASPECT

#4 TOURISM ASPECT

#5 PUBLIC SPACE ASPECT

#6 ARCHITECTURAL ASPECT

Aspects



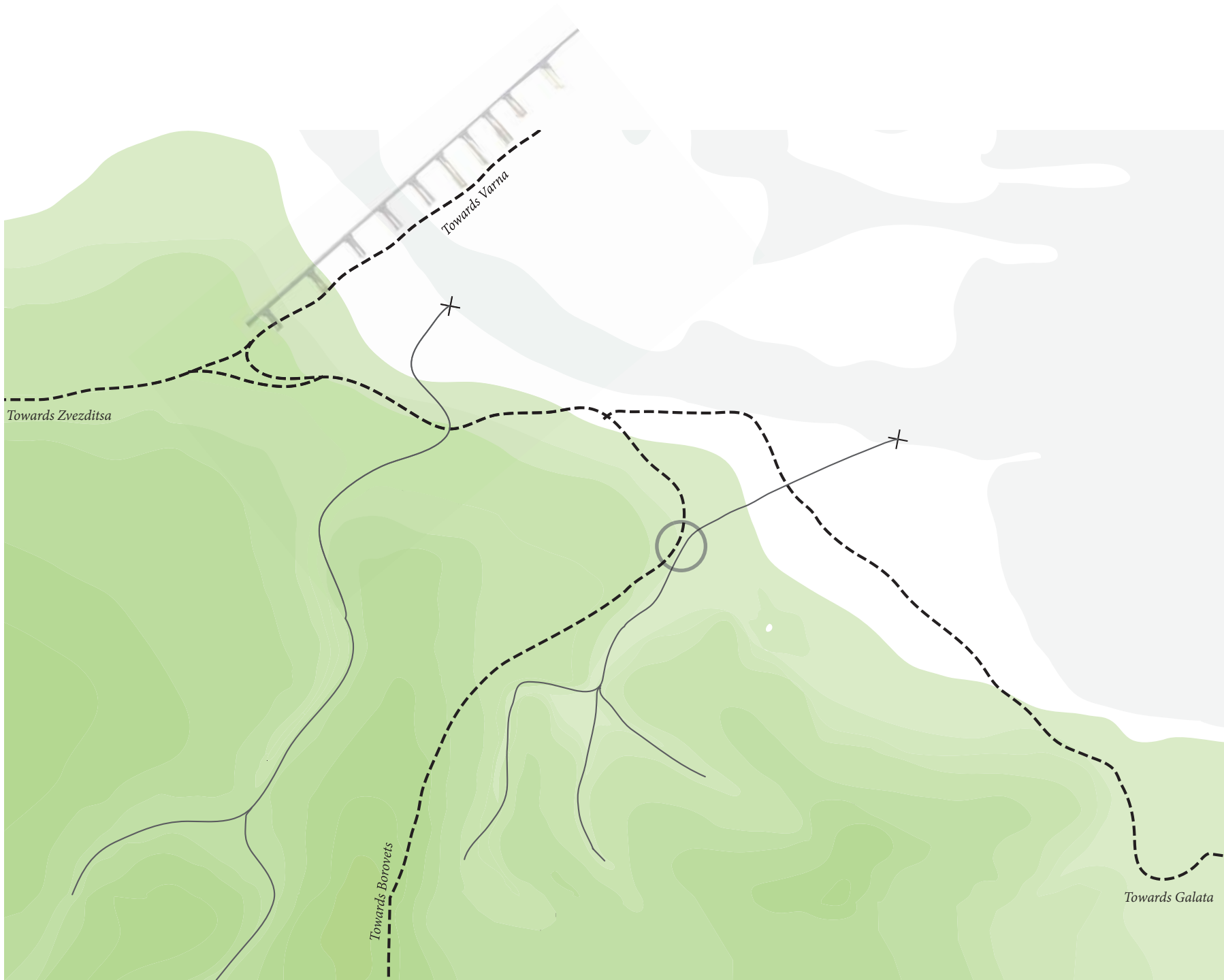






15511





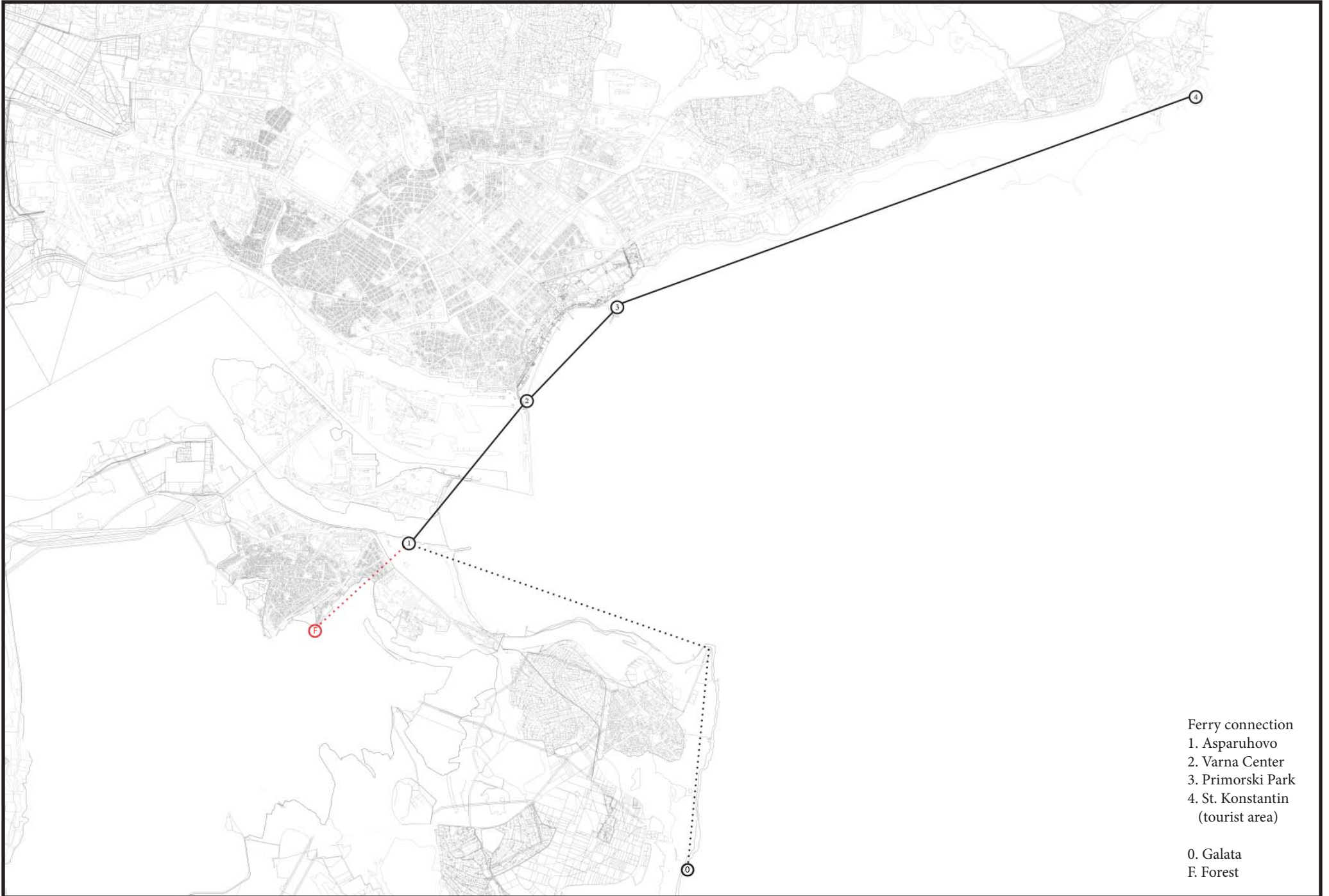
Towards Varna

Towards Zvezditsa

Towards Borovets

Towards Galata





Ferry connection

- 1. Asparuhovo
- 2. Varna Center
- 3. Primorski Park
- 4. St. Konstantin (tourist area)

0. Galata
F. Forest



Introduction: The vision of Varna in 2022

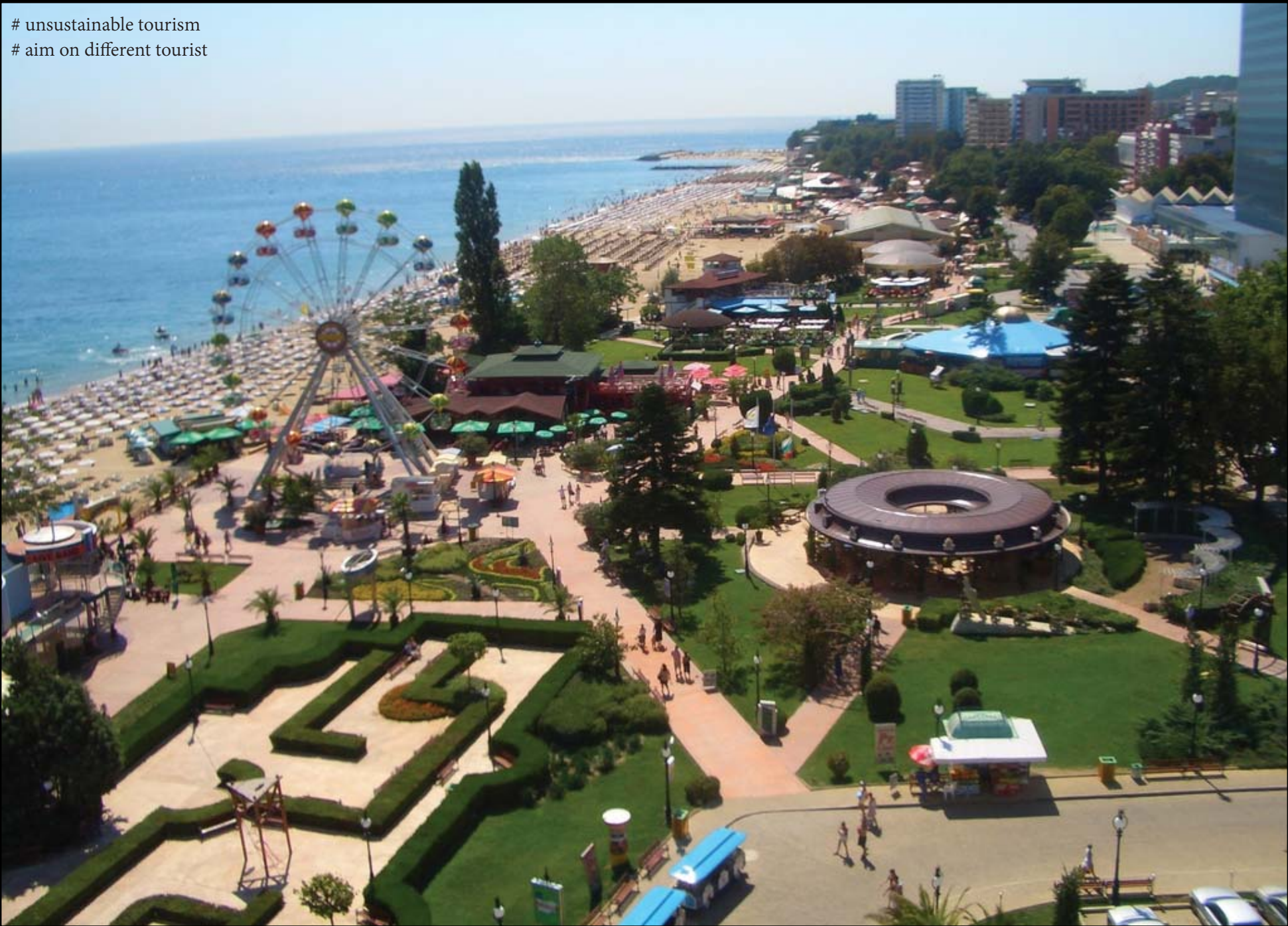
- Varna's inhabitants benefit fully from its **natural richness**
- Varna's **hotels are fully booked**
- **Active public / private cooperation** that keeps innovating the public area
- **Lively water front** (playing, jogging, eating, fishing, shopping, boating)
- Varna's **bathing water are clean**
- Varna is **safe from flooding** and **much greener**





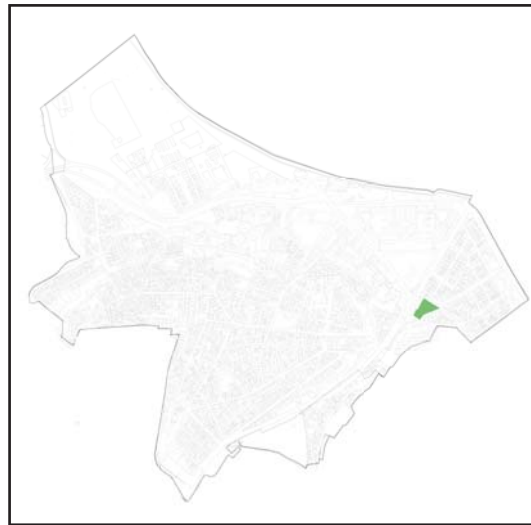


unsustainable tourism
aim on different tourist





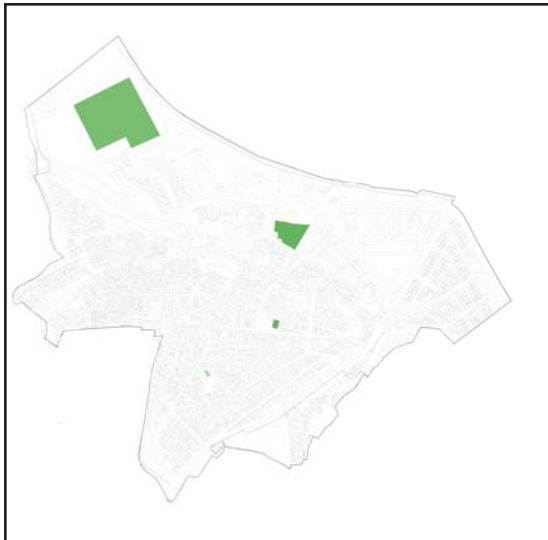
a. playgrounds



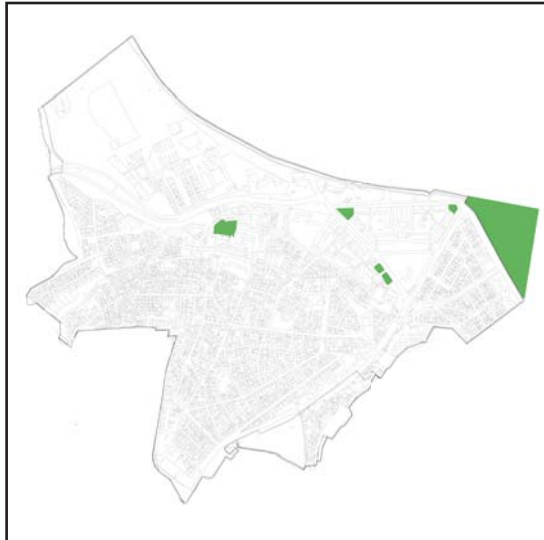
b. squares



c. unused public space



d. sporting facilities



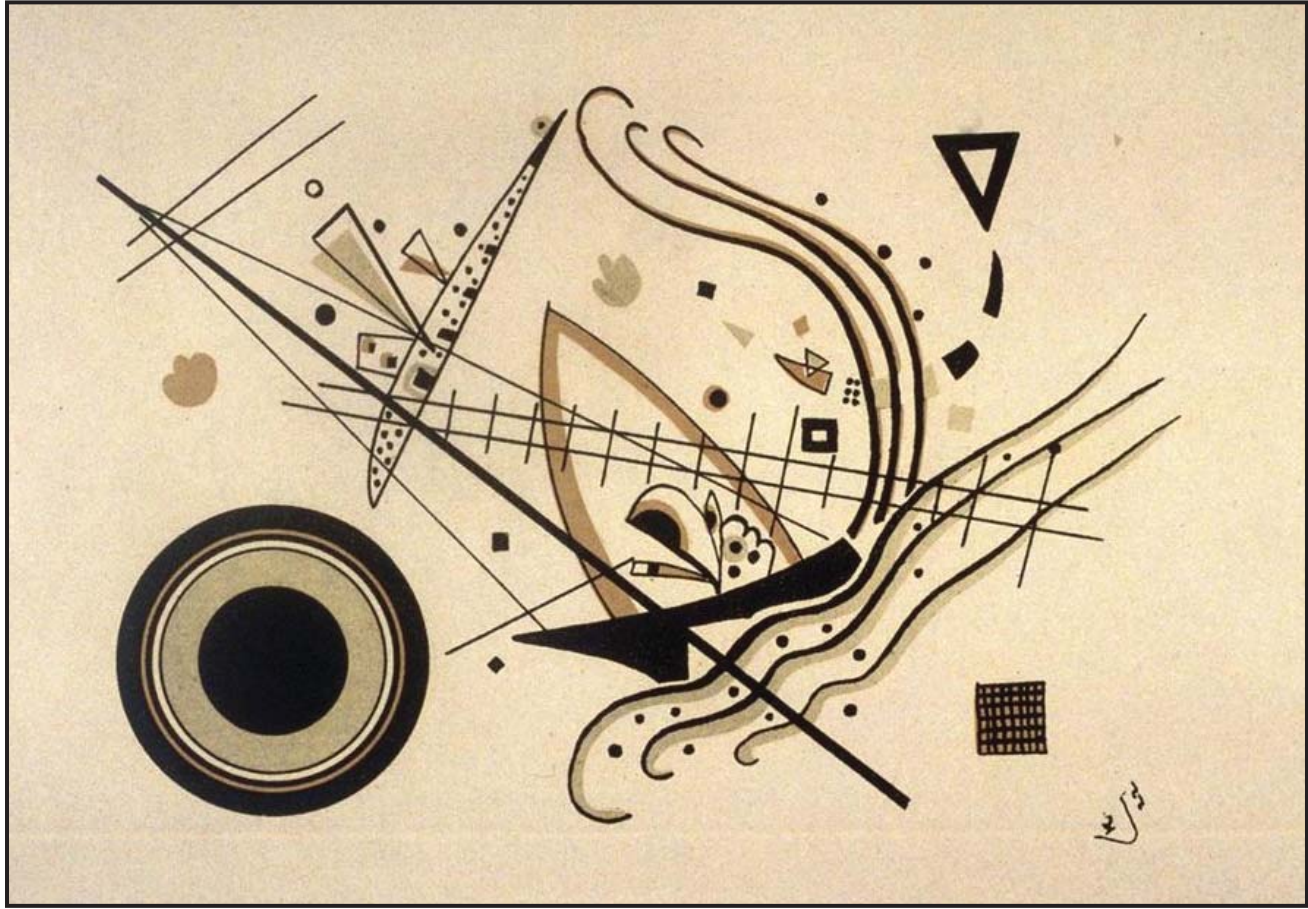
e. designated park space

PUBLIC SPACE IN
ASPARUHOVO

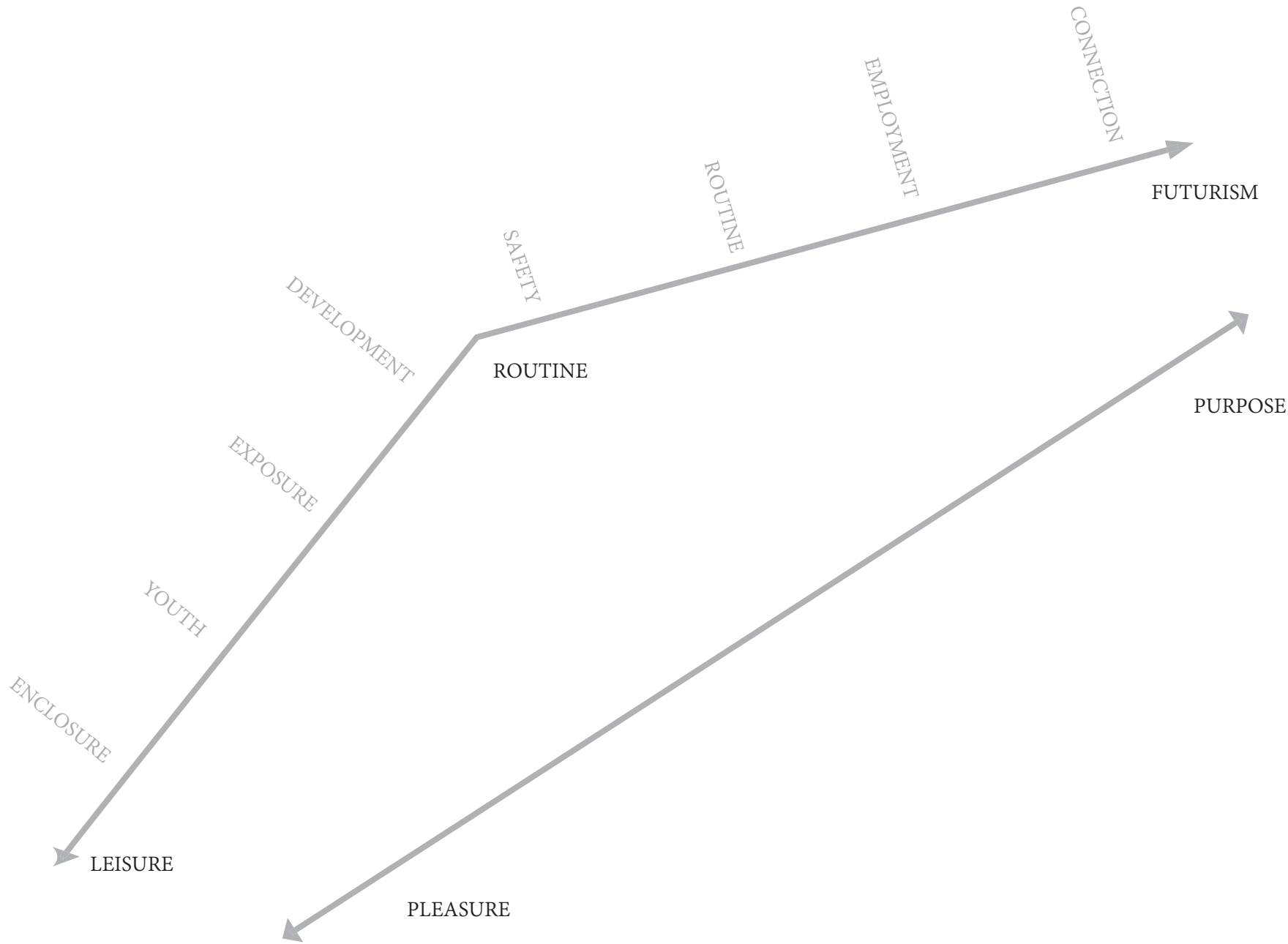


#Gray architecture









LEISURE

PLEASURE

PURPOSE

ROUTINE

SAFETY

ROUTINE

EMPLOYMENT

CONNECTION

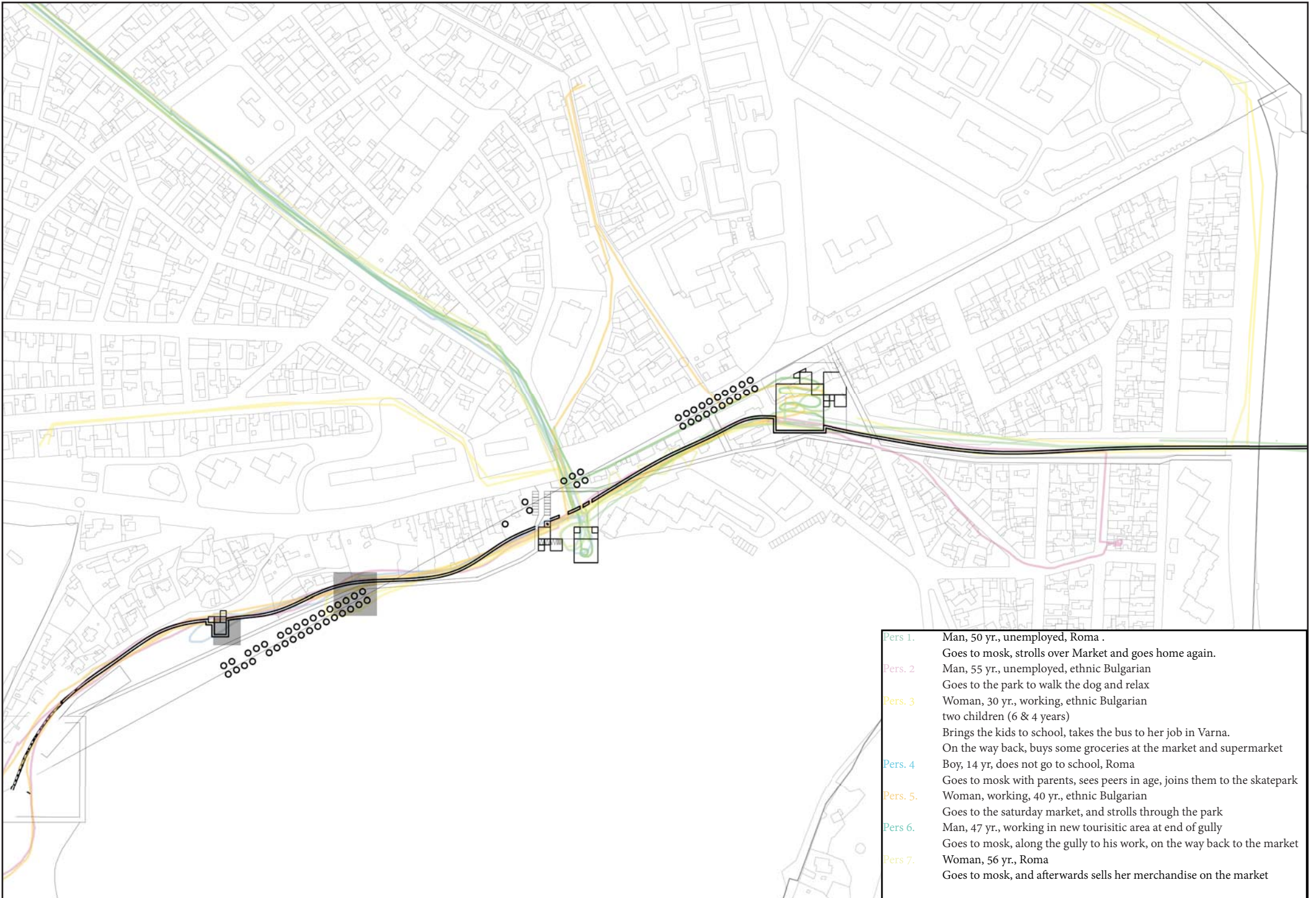
FUTURISM

ENCLOSURE

YOUTH

EXPOSURE

DEVELOPMENT





Central square

Youth territory

Asparuhovo dam

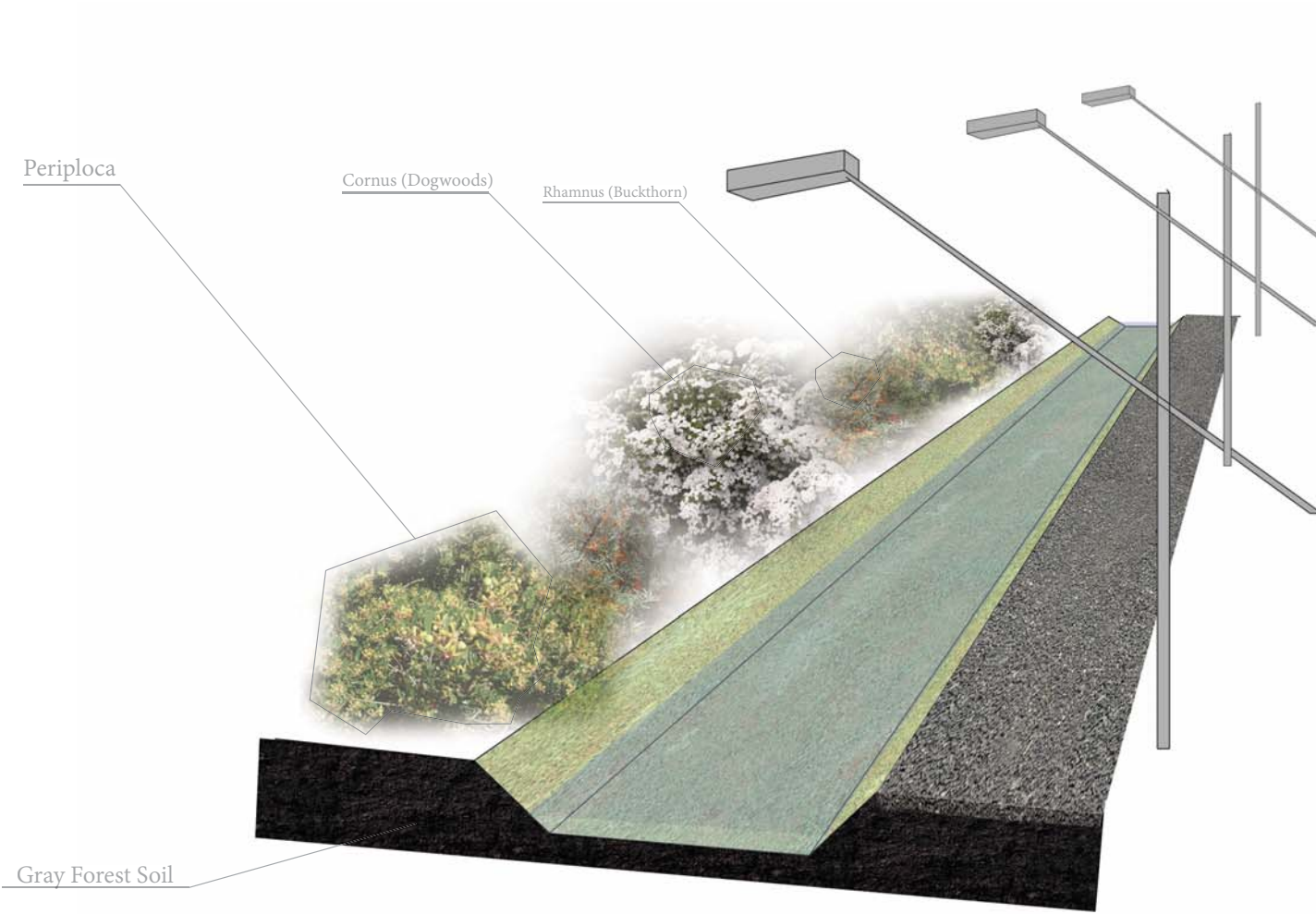
Roma safezone

Asparuhovo statue



Expressionist Expansion along gully

The connector





YOUTH

SAFEZONE

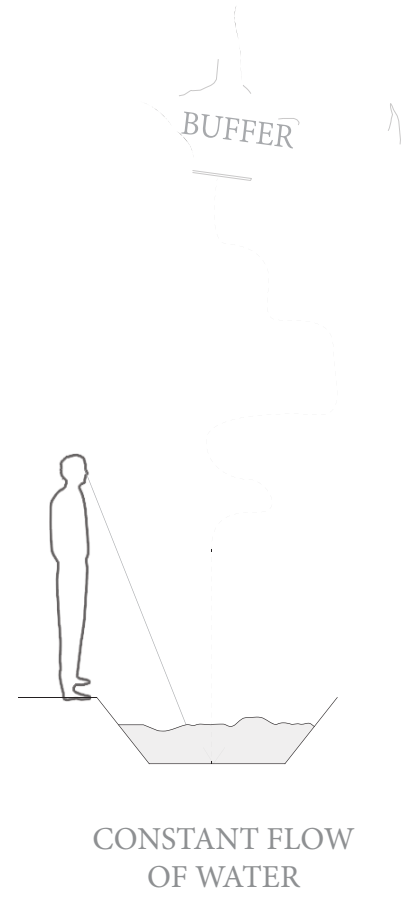
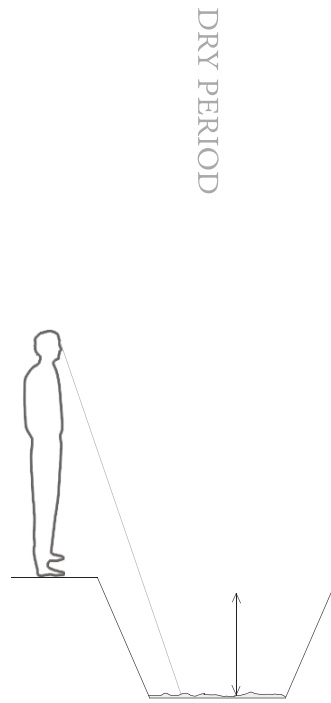
SQUARE

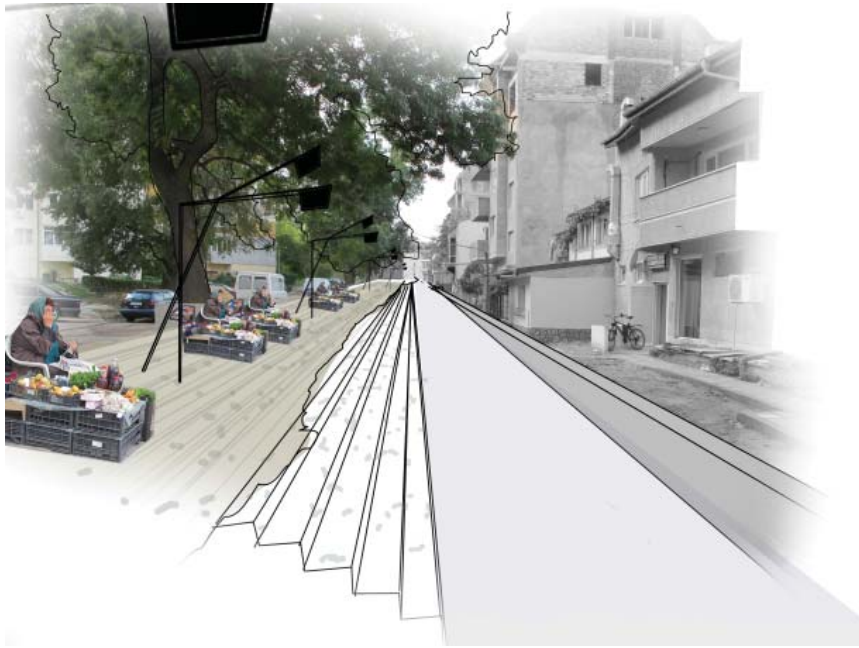
RESIDENTIAL ZONE

PARKZONE

CURRENT SITUATION

FUTURE SITUATION





ARTIFICIAL PARTS - BUILT PARTS



NATURAL PARTS - UNBUILT PARTS





CONNECTION

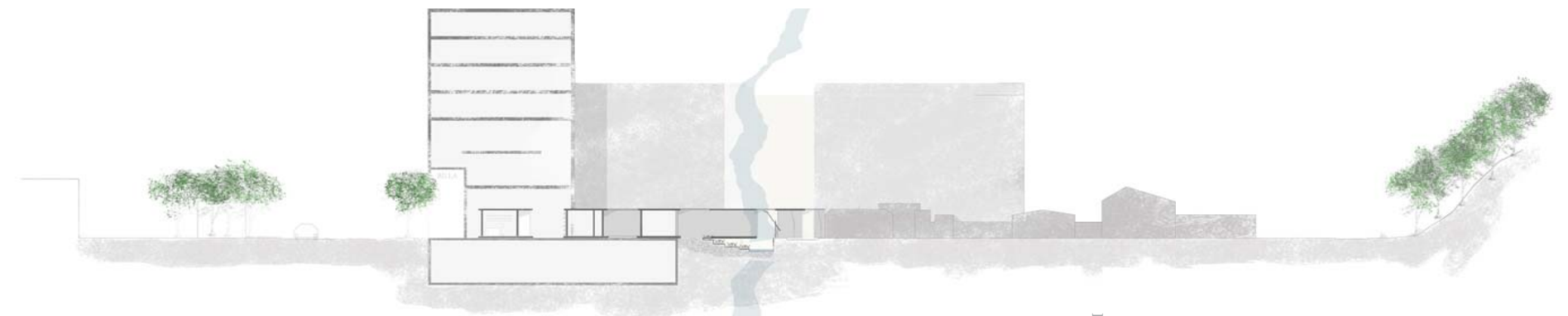


EMPLOYMENT



ROUTINE #1



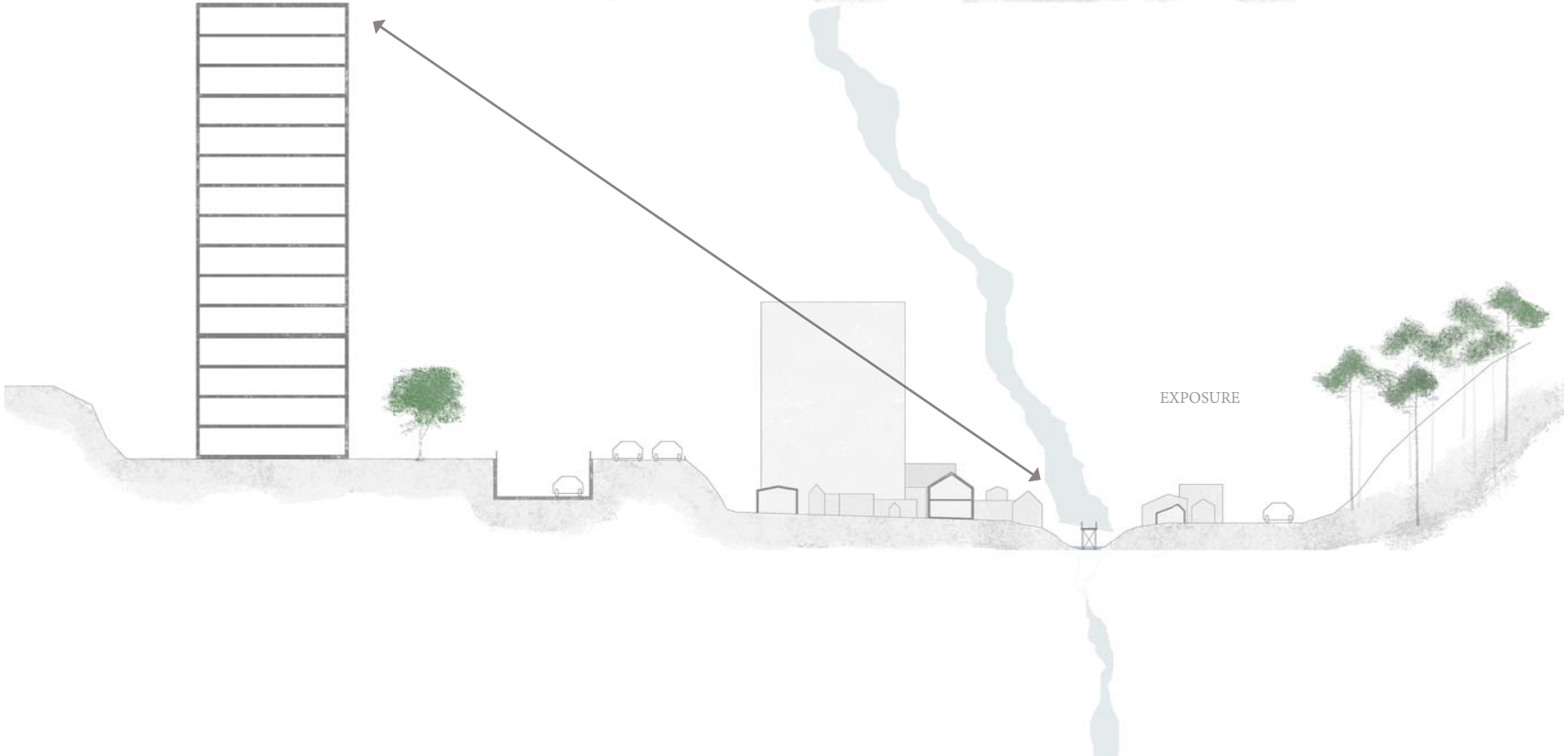
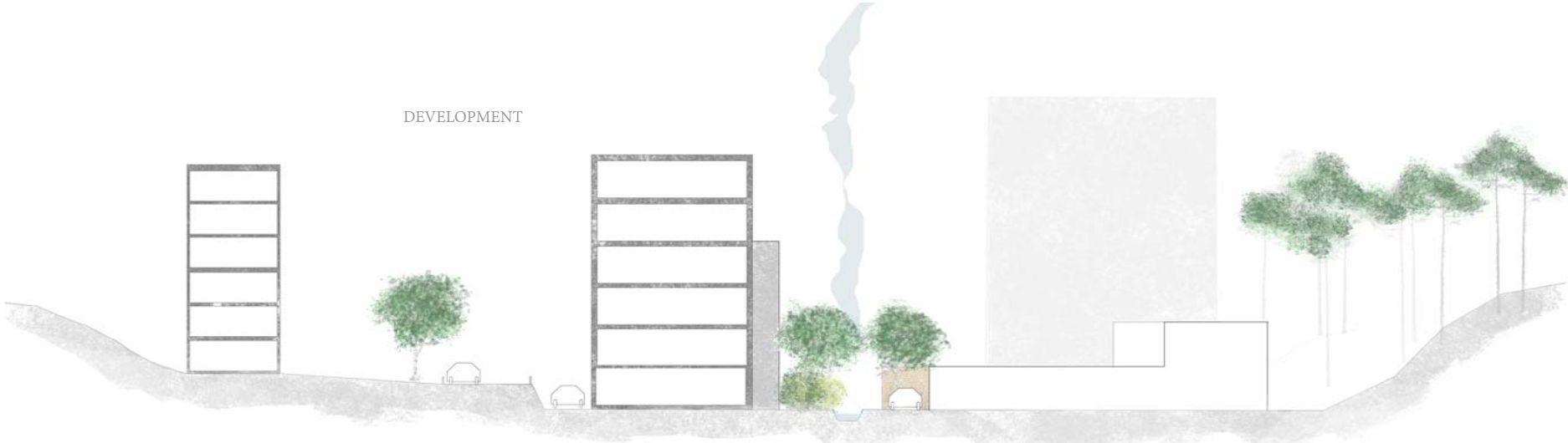


ROUTINE #2

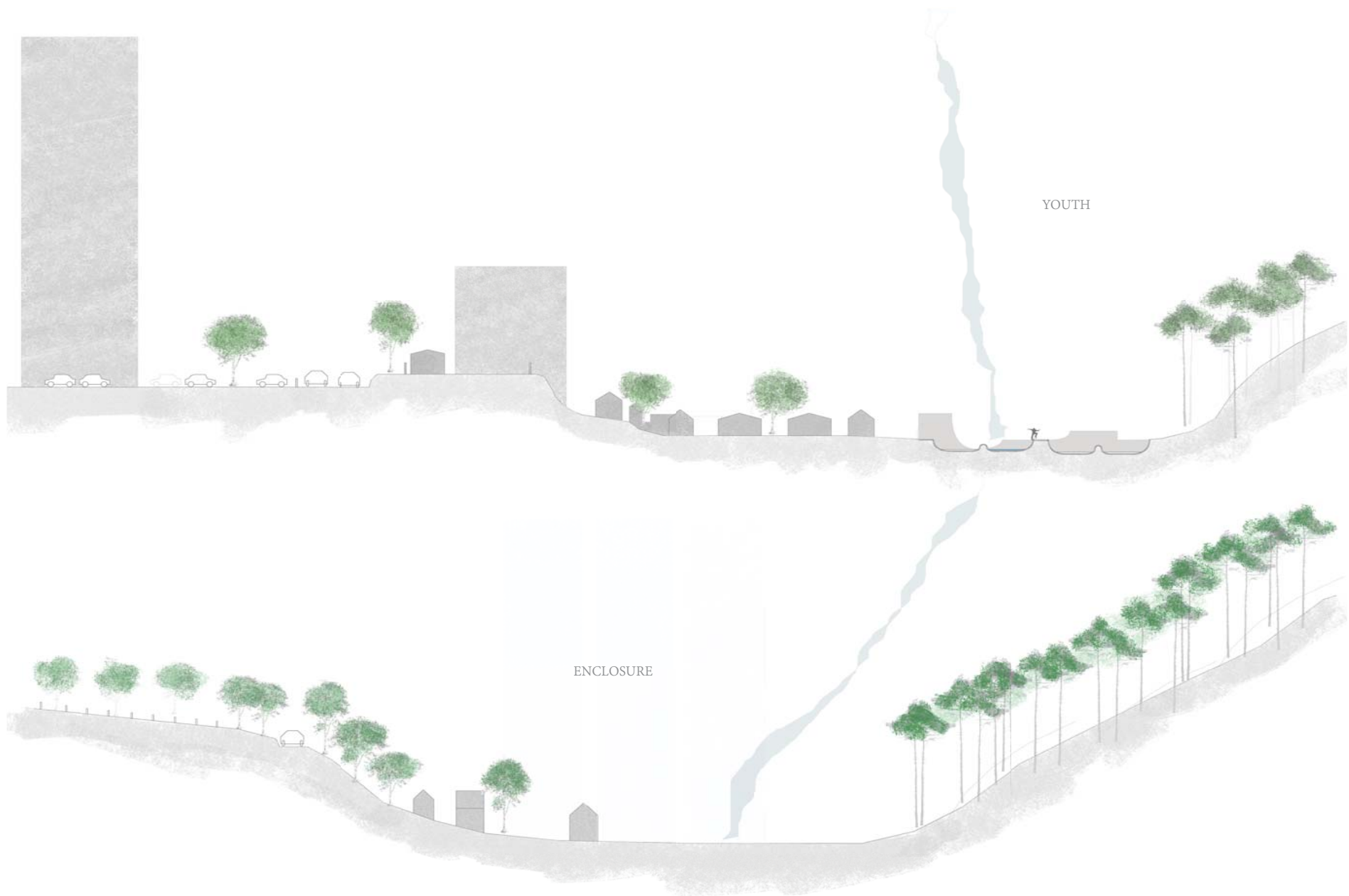


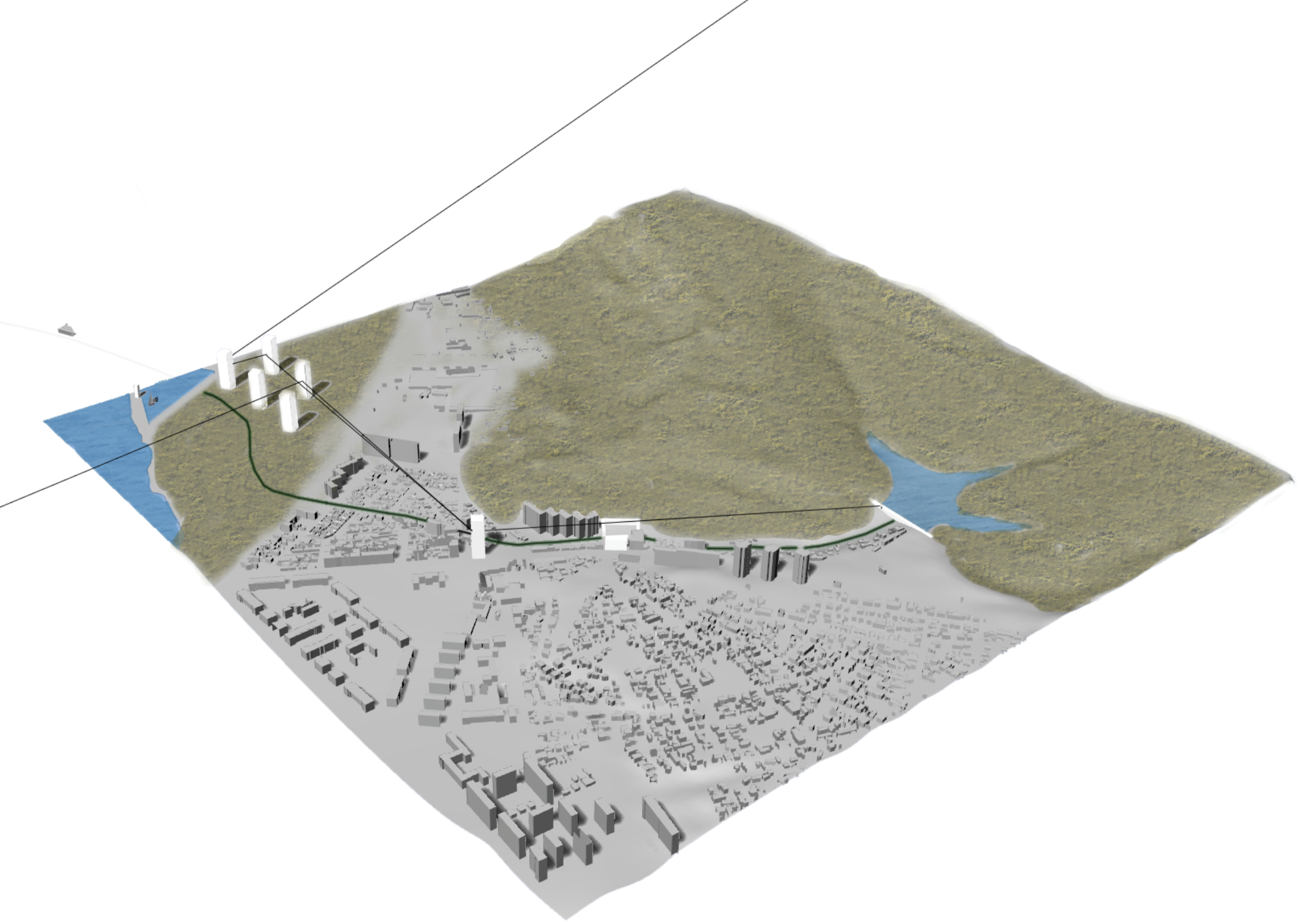
SAFETY

DEVELOPMENT



EXPOSURE







Marina

Asparuhovo statue

Central square

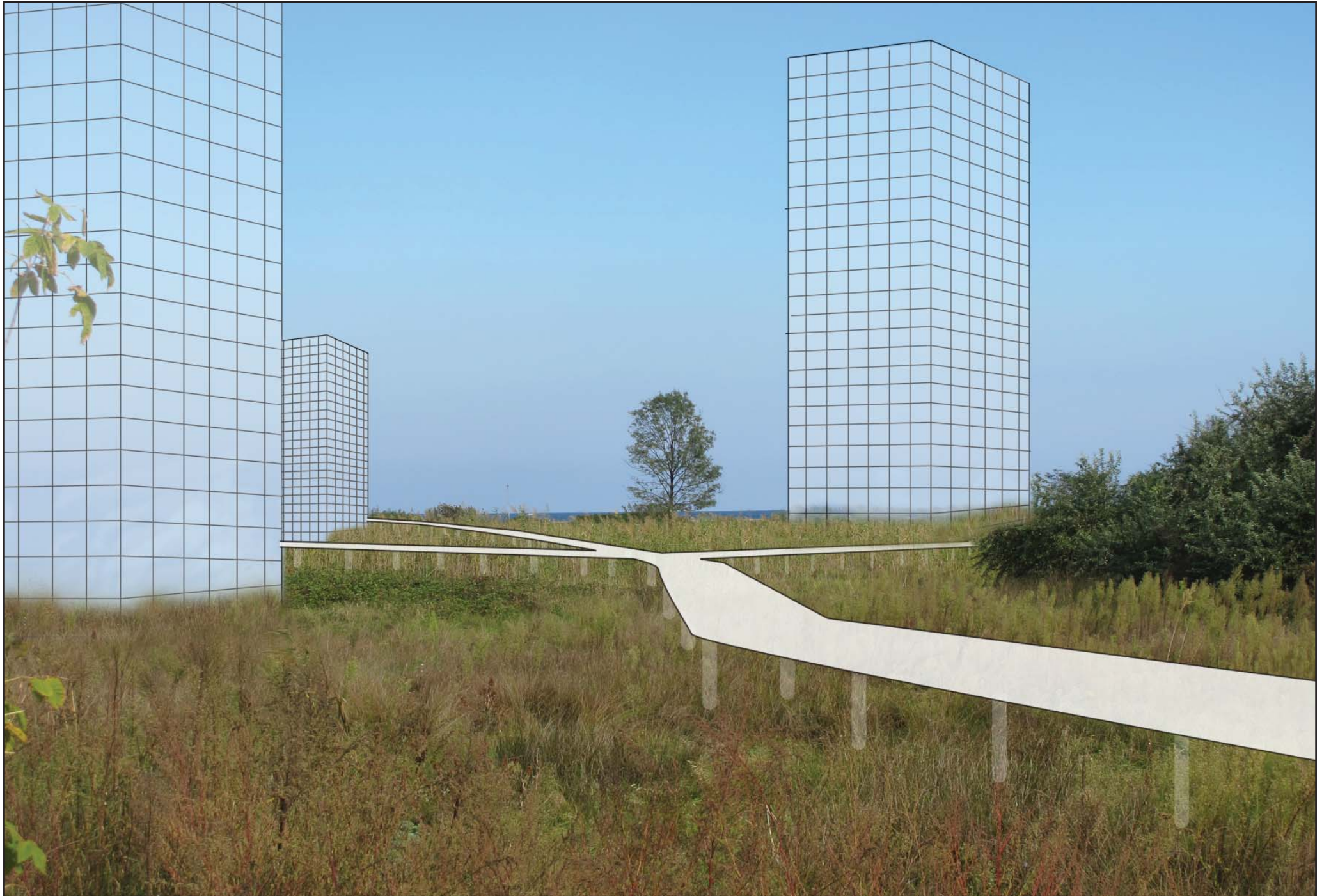
Roma safezone

Youth territory

Asparuhovo dam



New Marina | Development Area Tourism





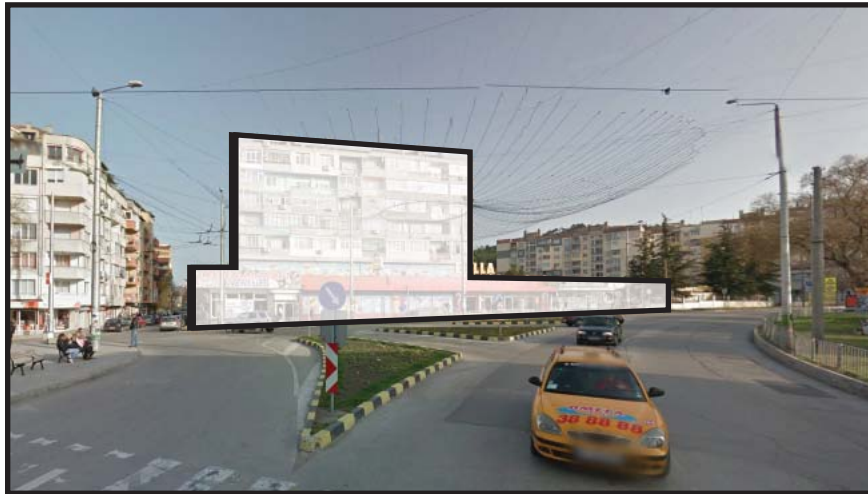
Central square

Asparuhovo statue

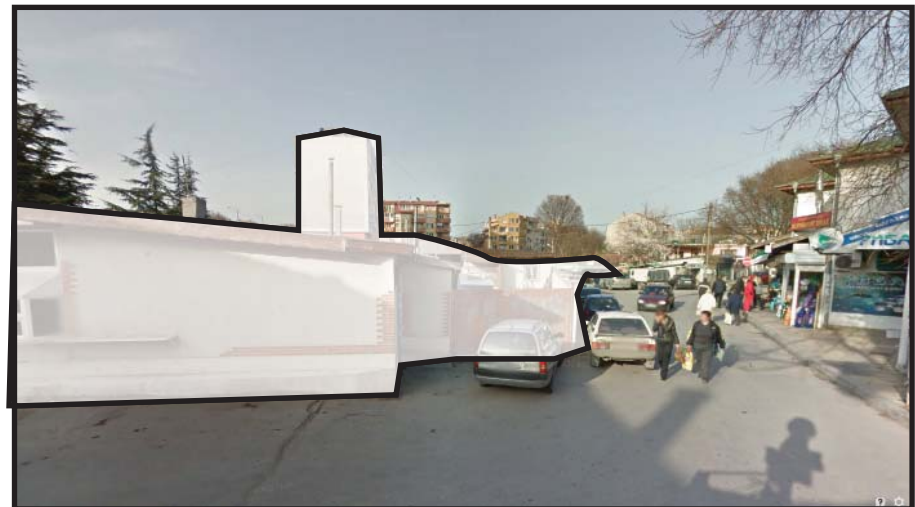
Roma safezone

Youth territory

Asparuhovo dam



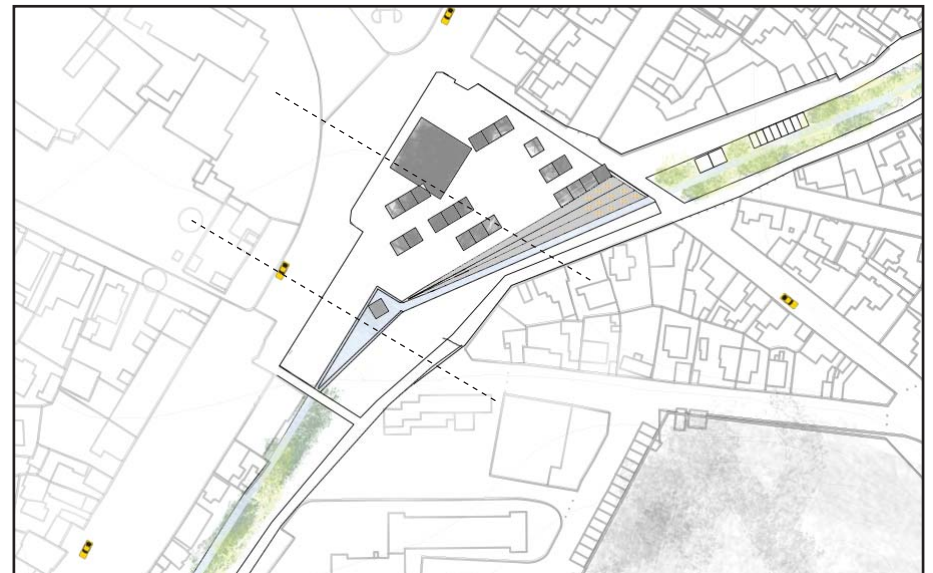
Analysis
Center
Asparuhovo

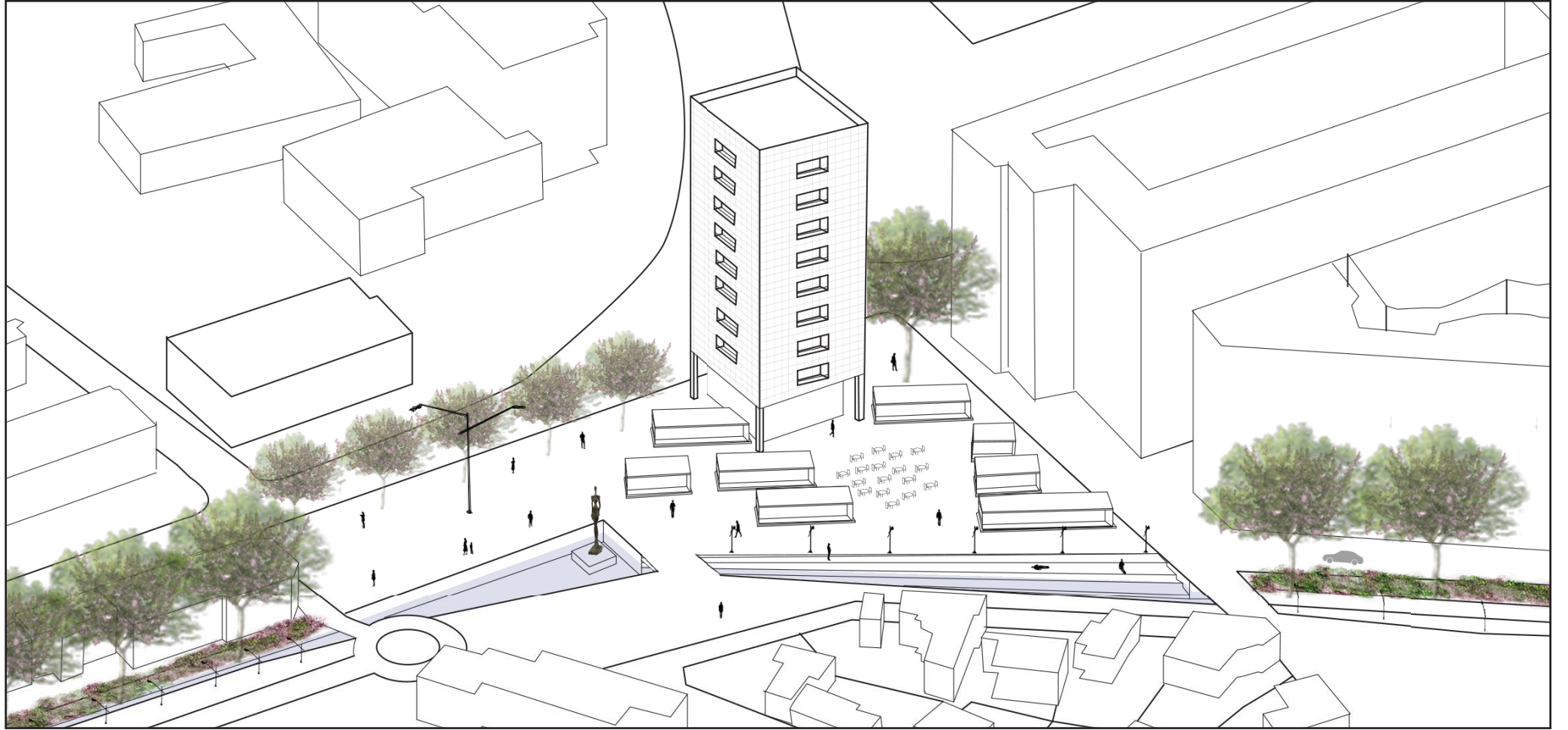




New design of square:

- # opened up to neighborhood
- # organized shops/stalls
- # has a 19-6-2014 monument
- # is in line with both gully and main street
- # creates a place for gathering
- # has terraces integrated in gully
- # is a concrete interruption in planted gully
- # supermarket under the square







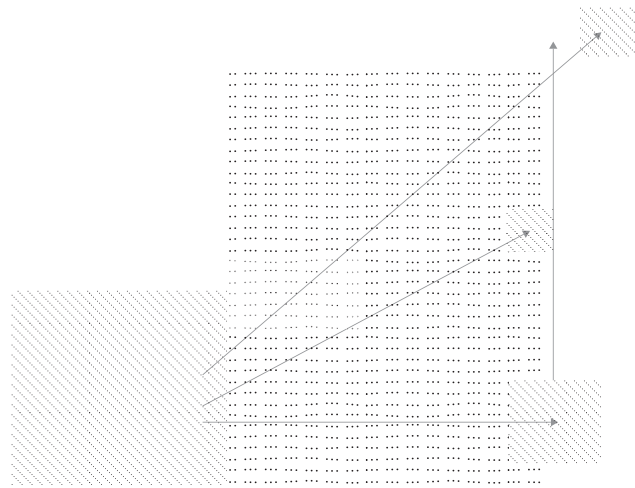
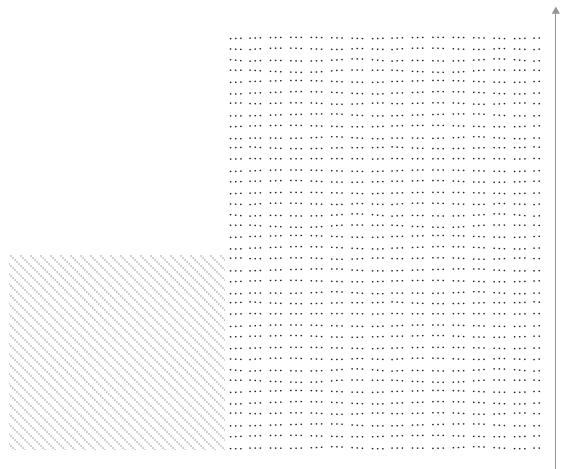
Central square

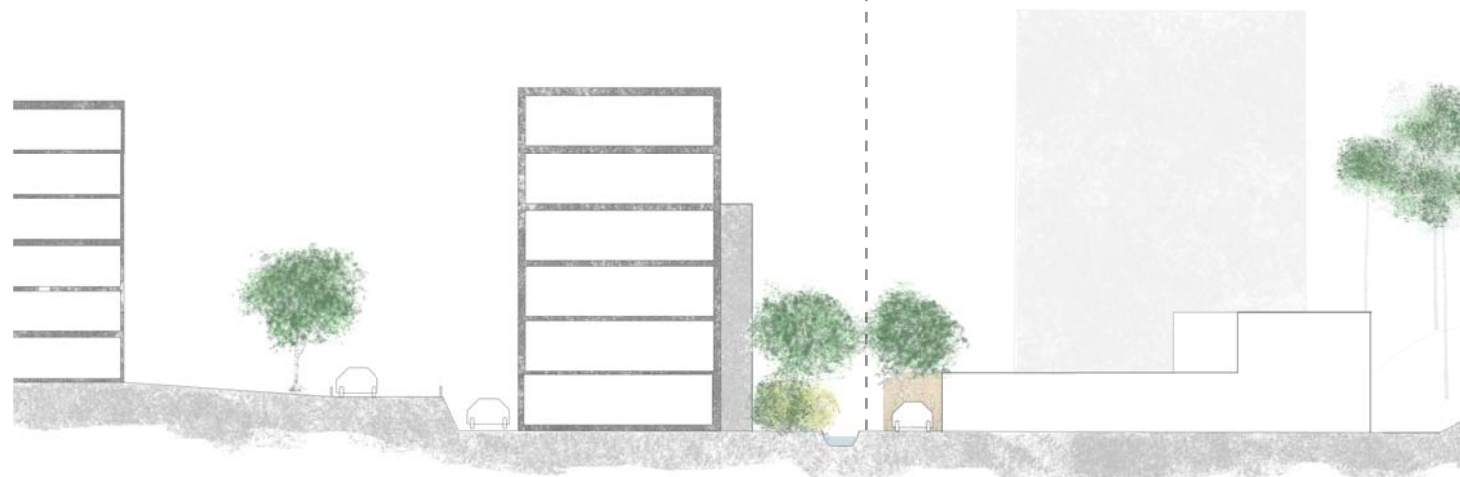
Roma safezone

Youth territory

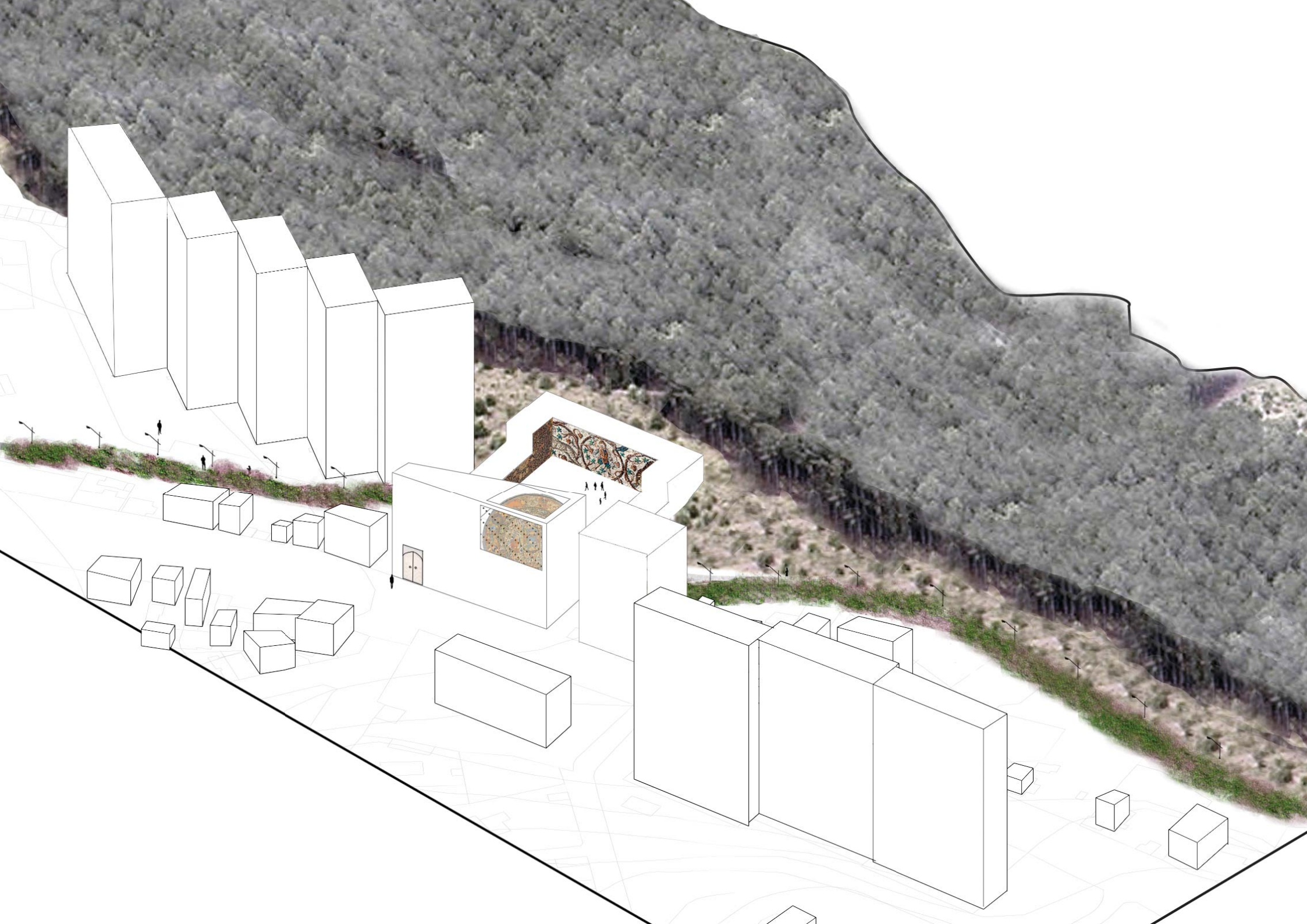
Asparuhovo dam

Asparuhovo statue





- Roma safezone
- # School + mosque
- # Social control
- # Determined place of selfexpression
- # Neutral on the outside





Reference: Le Medi, Rotterdam



Central square

Youth territory

Asparuhovo dam

Roma safezone

Asparuhovo statue

FACTS & STATS

1959272 m² catchment area

2 l/day average rainfall in Bulgaria

reservoir contains **120.415.000 l**

it takes **30 days** to fill the reservoir with the average amount of rain (when dam is closed)

24.483 residents in Asparuhovo

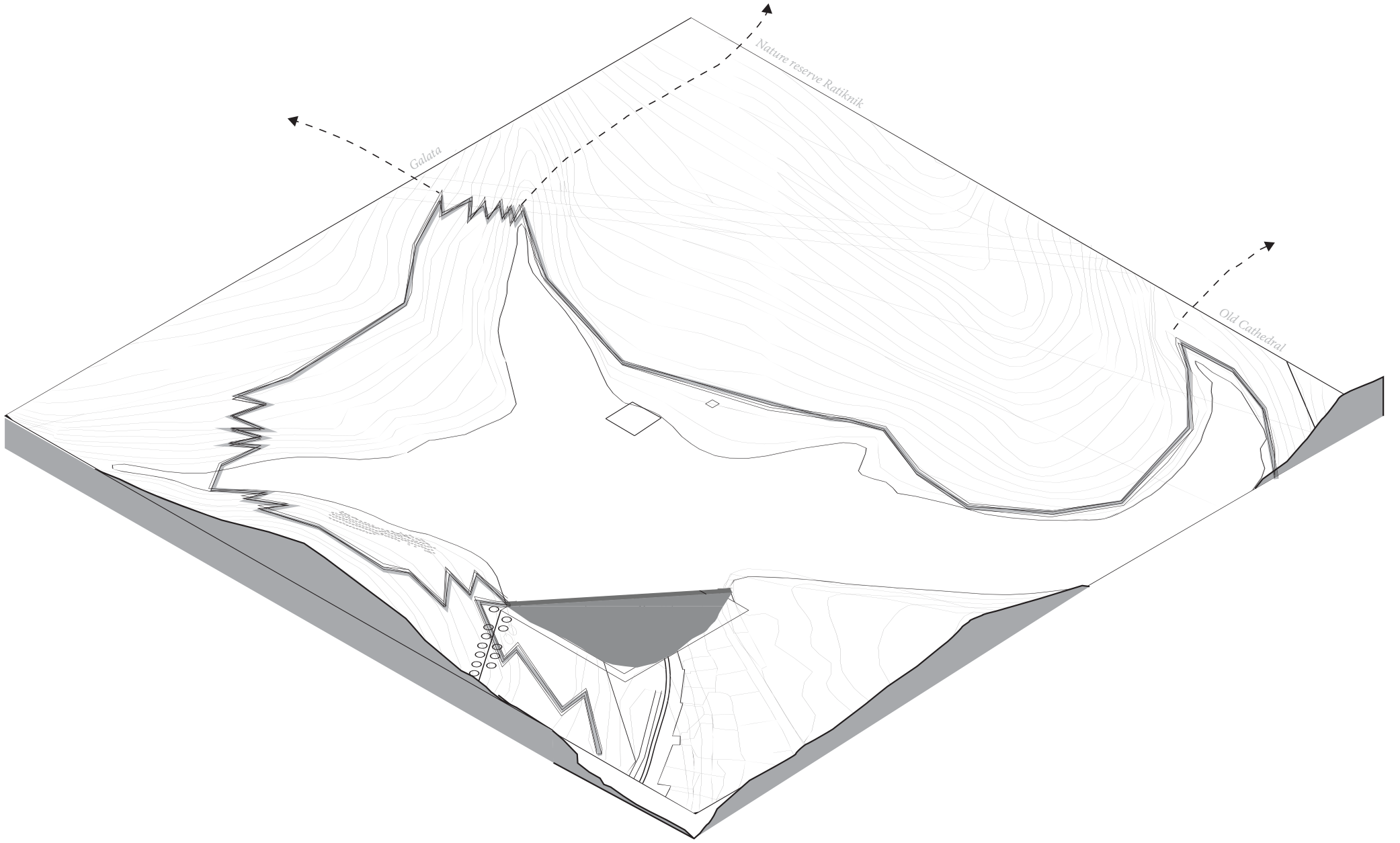
average daily use of water in Bulgaria is 341 l per day

40 l/s in gully could stream through gully all year round
or, when needed, and another system is implemented,

the reservoir contains for **14,4 days of water** for the whole
of Asparuhovo with normal water use





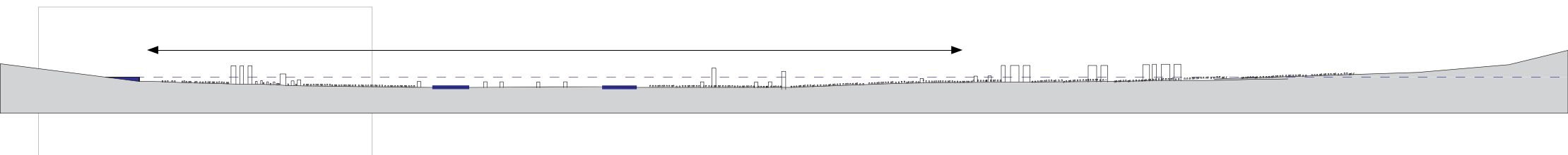
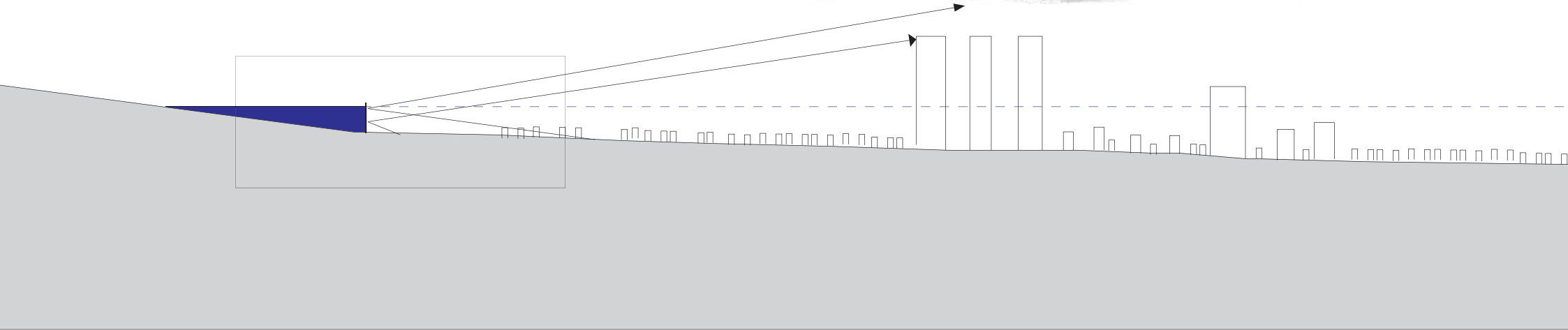
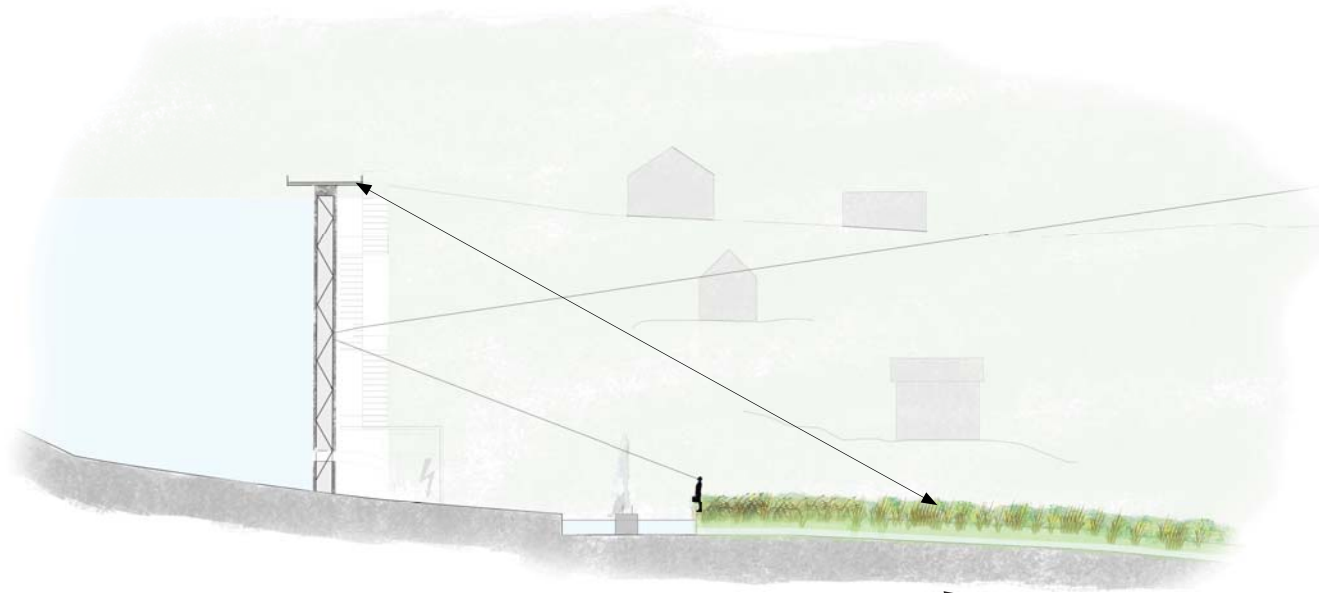






Riparian zone around lake











thanks for listening