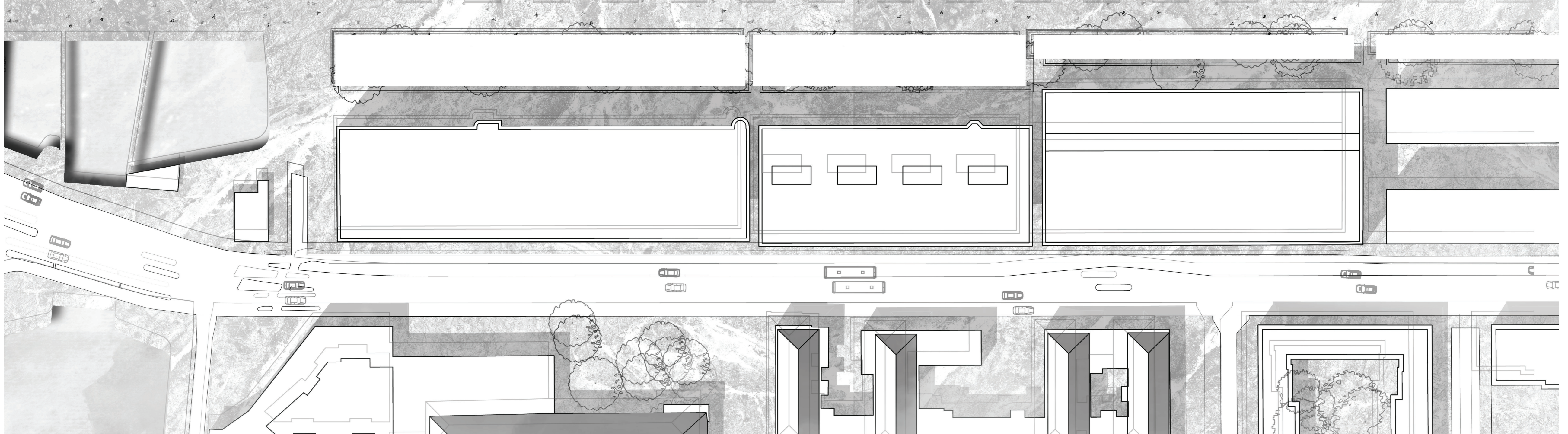
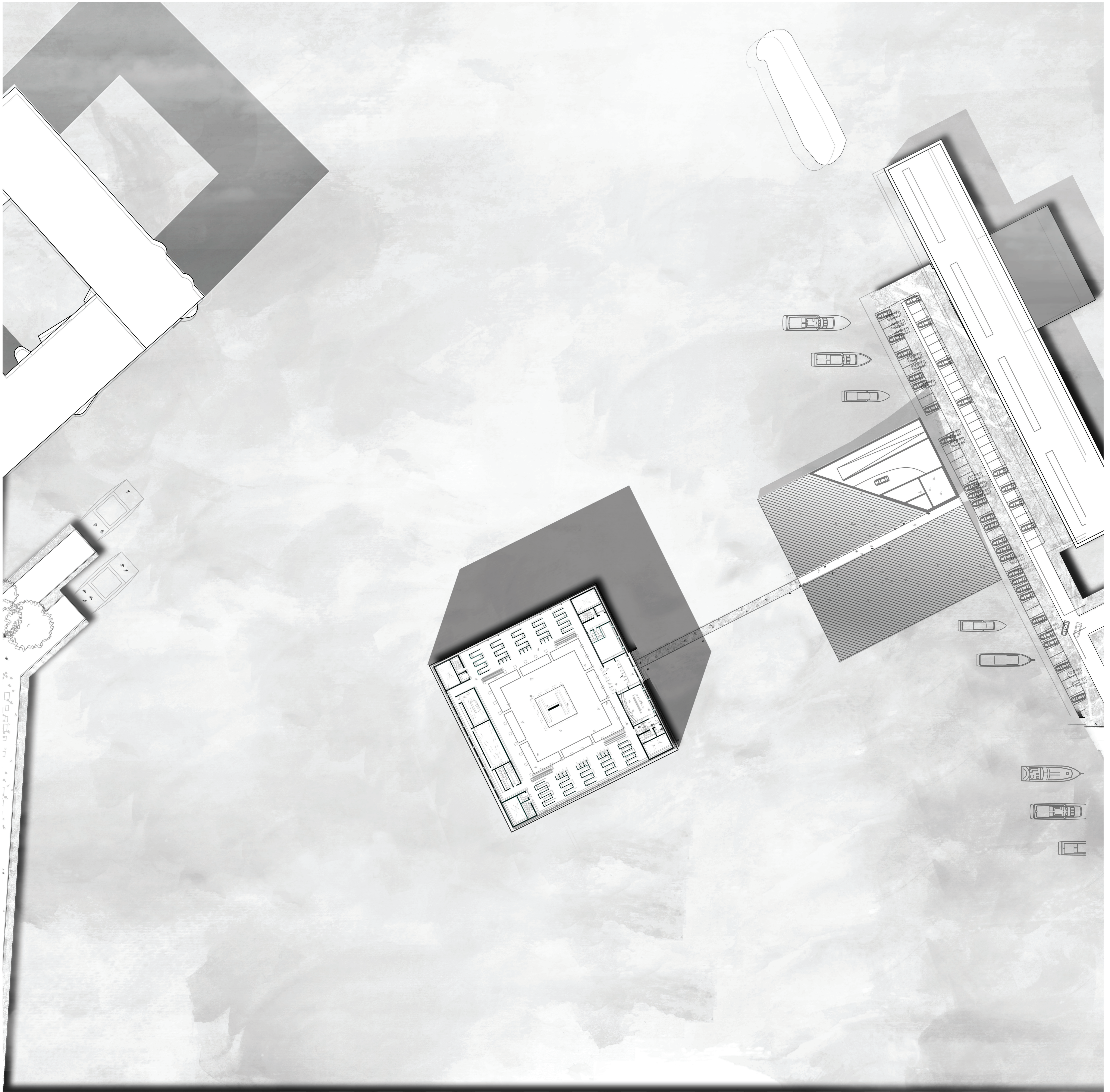


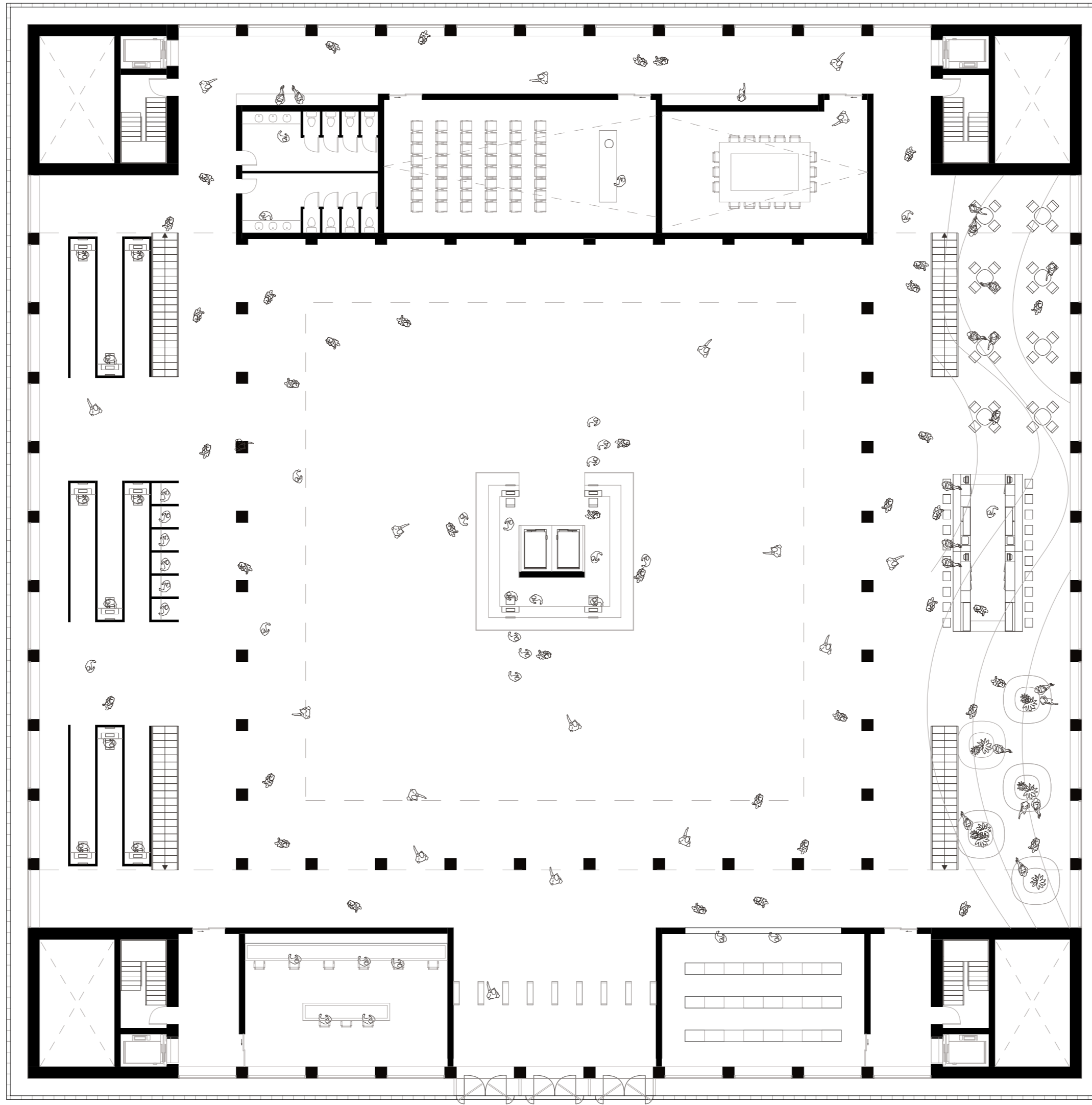




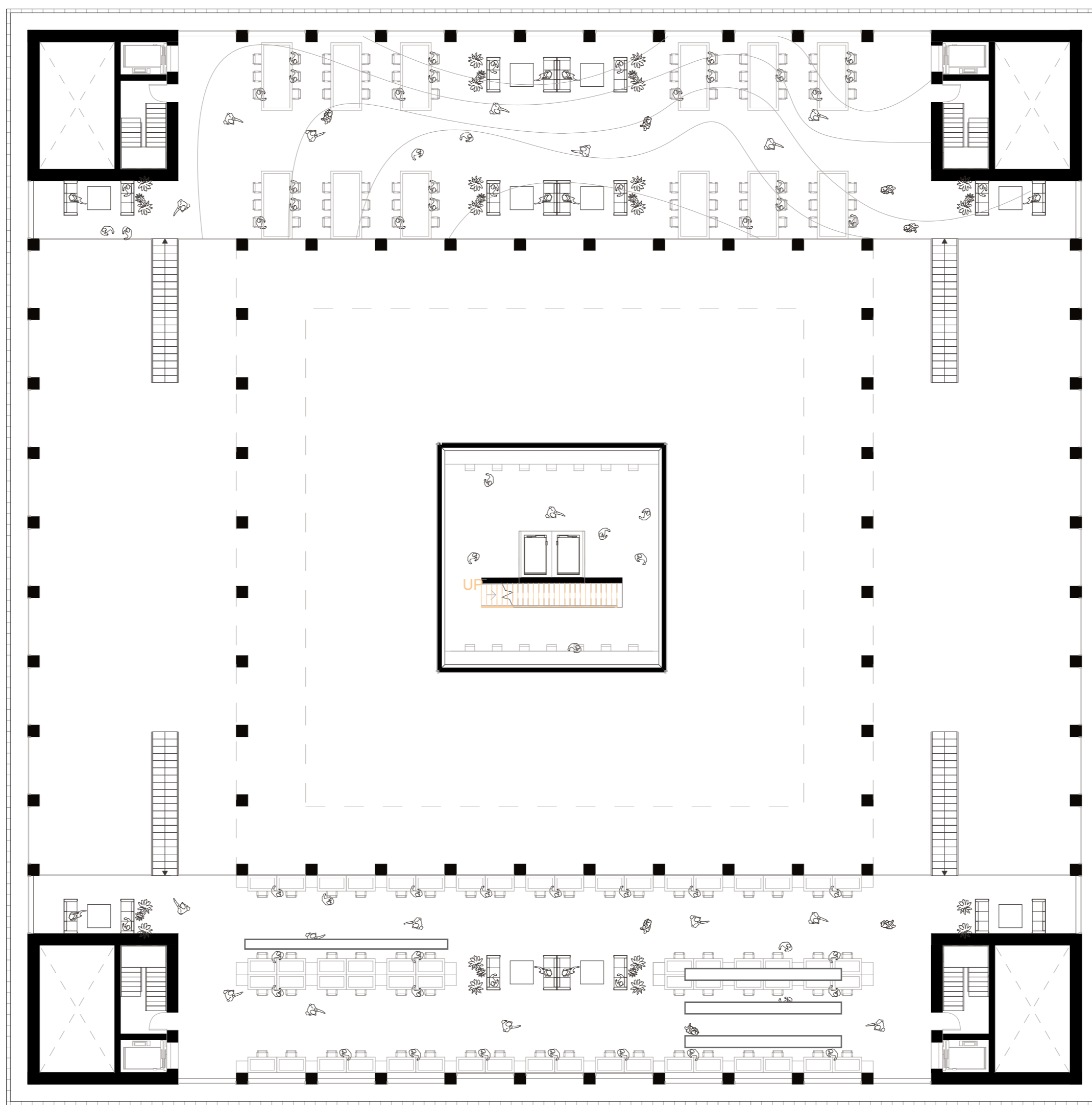
PROJECT SITE  
SCALE 1:1000



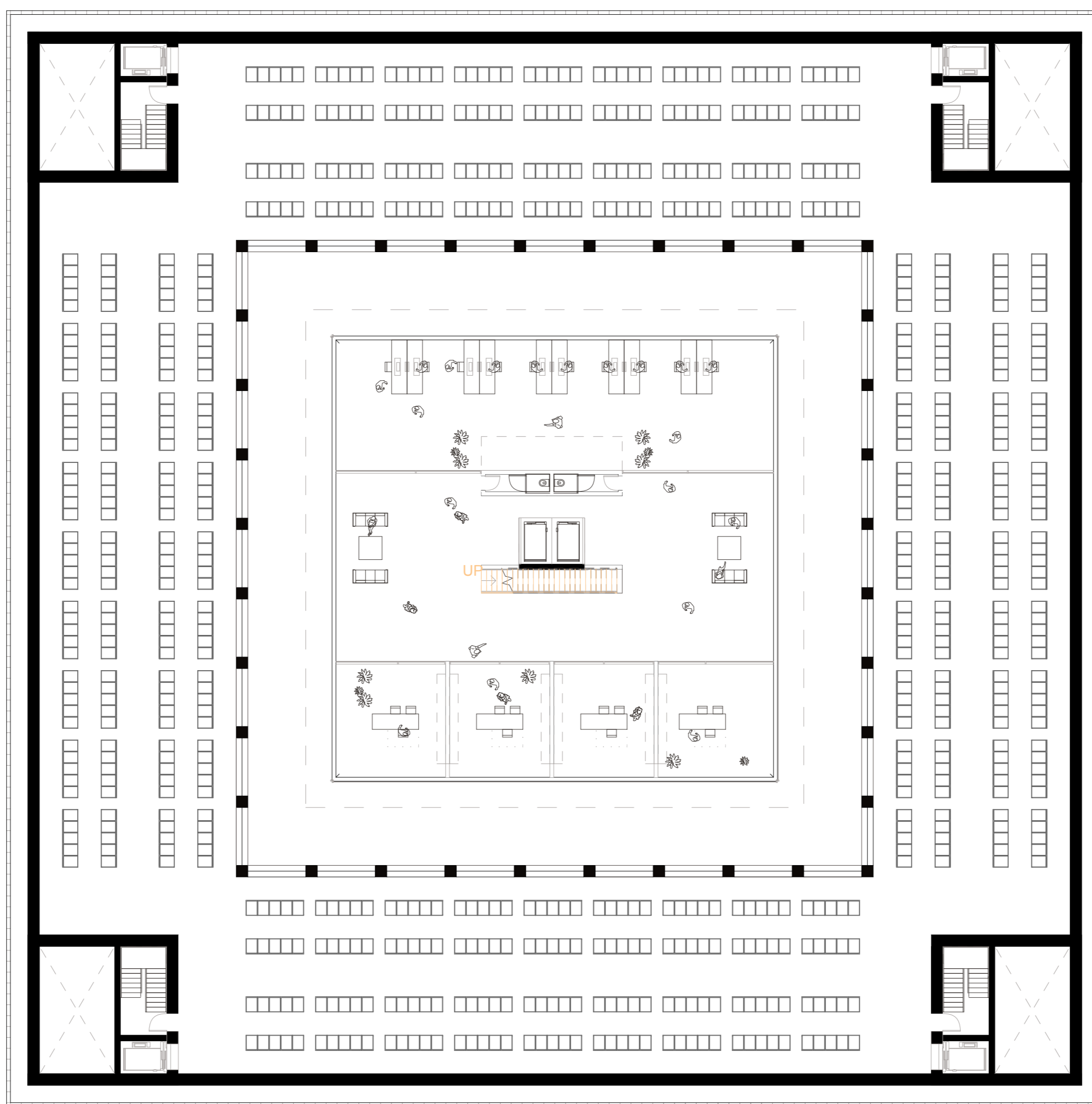
CLOUD



GROUND FLOOR

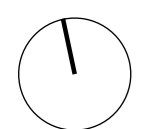


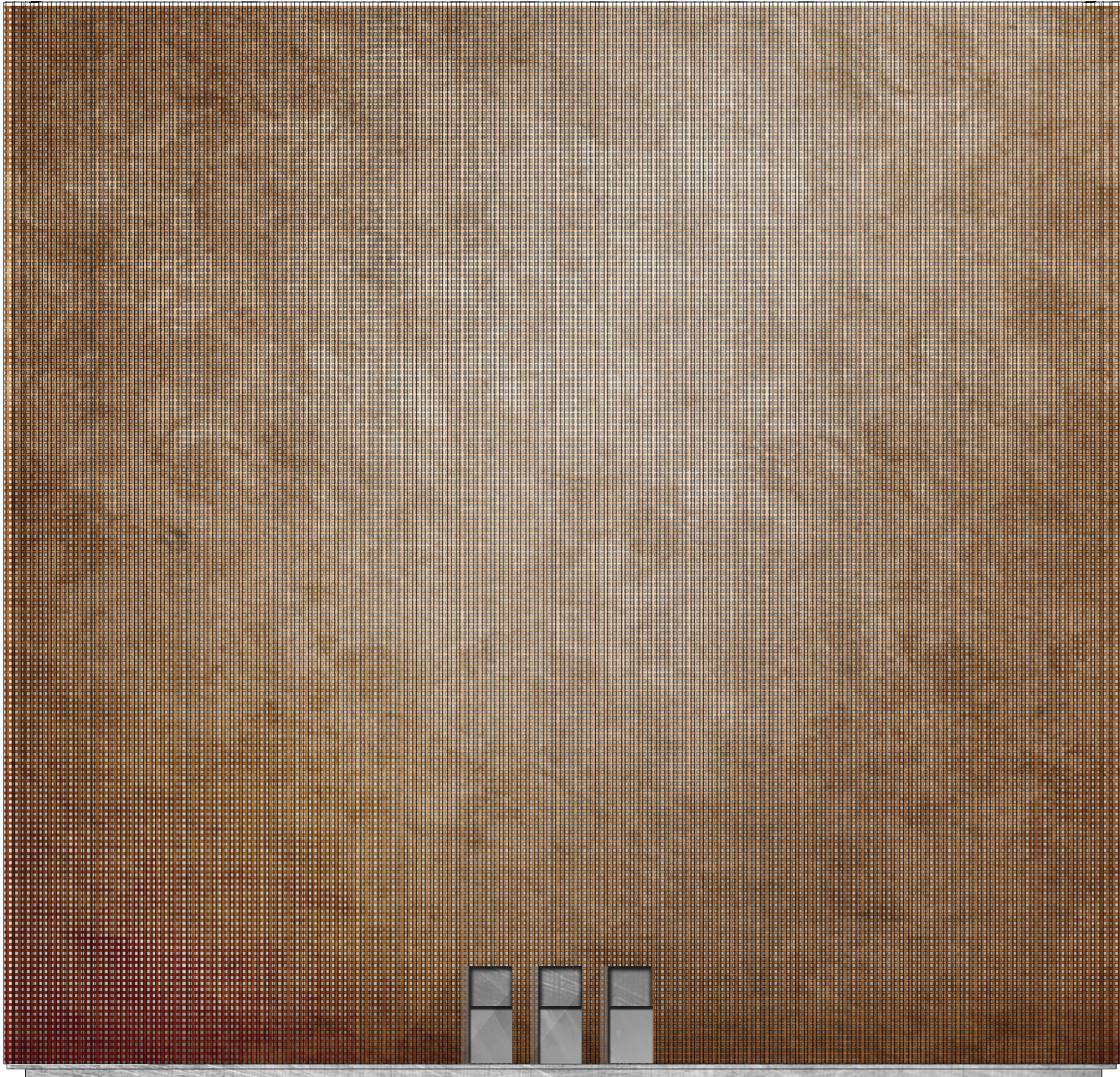
MEZZANINE



TYPICAL FLOORPLAN

FLOORPLANS  
SCALE 1:200





EAST ELEVATION



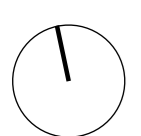
NORTH ELEVATION

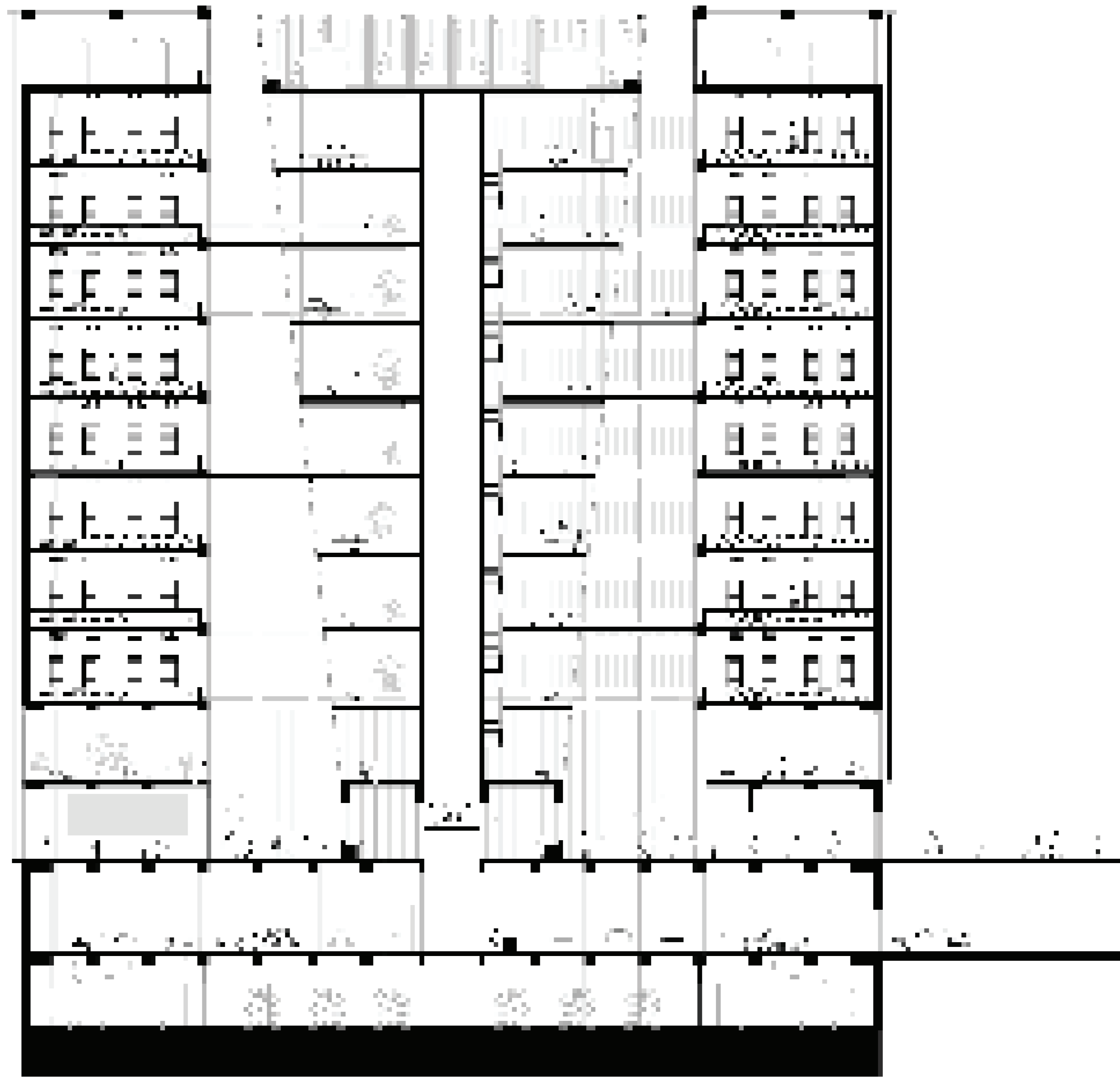


WEST ELEVATION

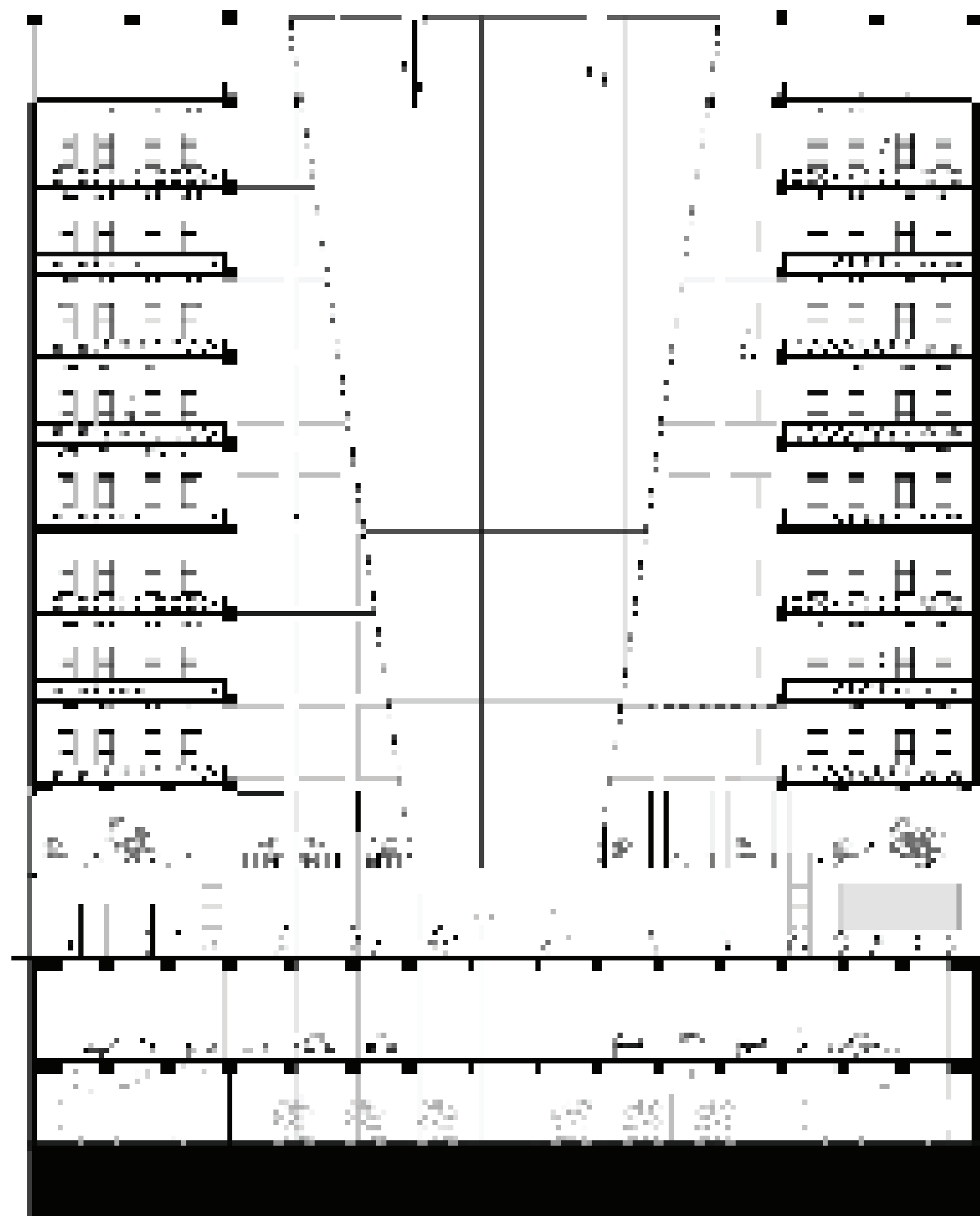


SOUTH ELEVATION





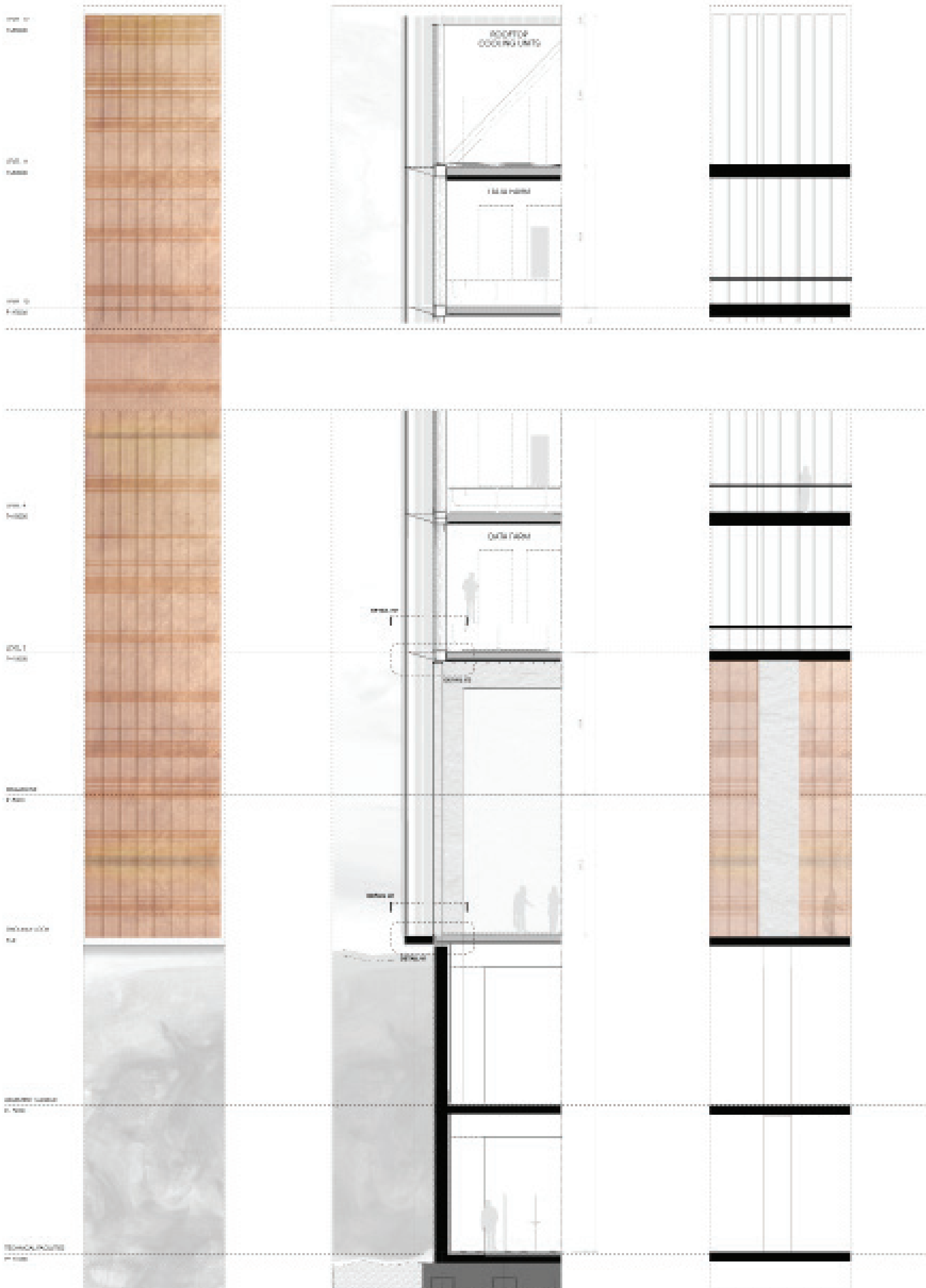
LONGITUDINAL SECTION



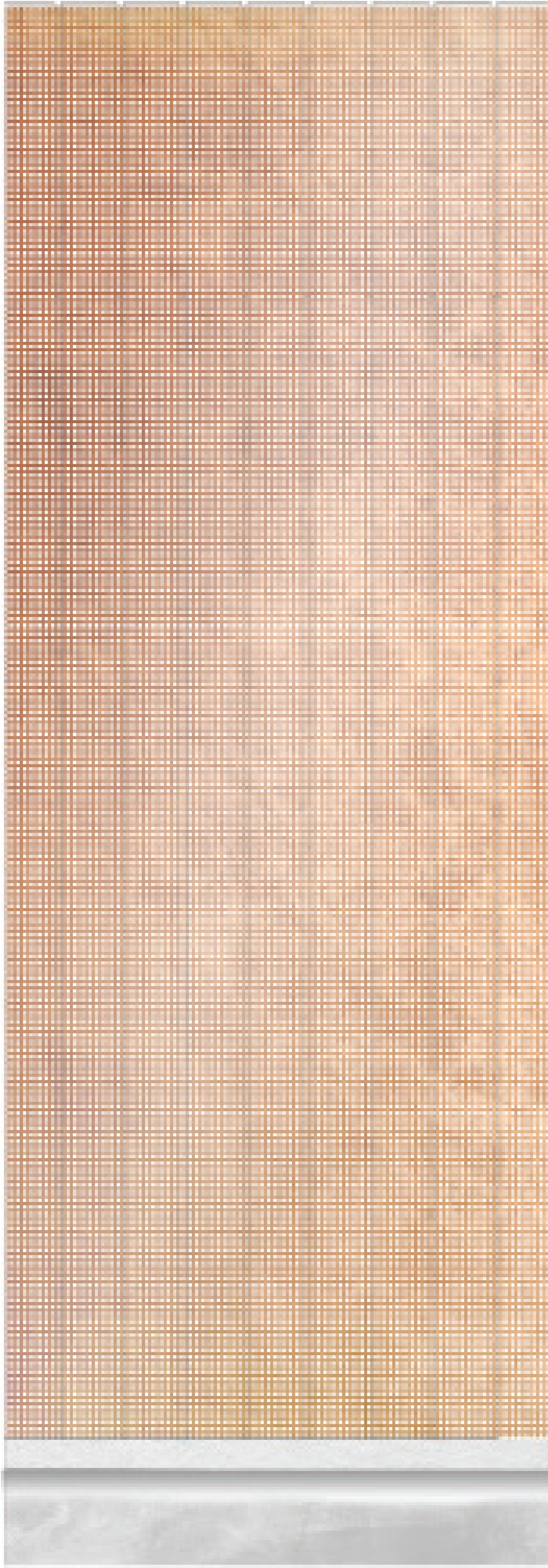
CROSS SECTION

SECTIONS  
SCALE 1:200



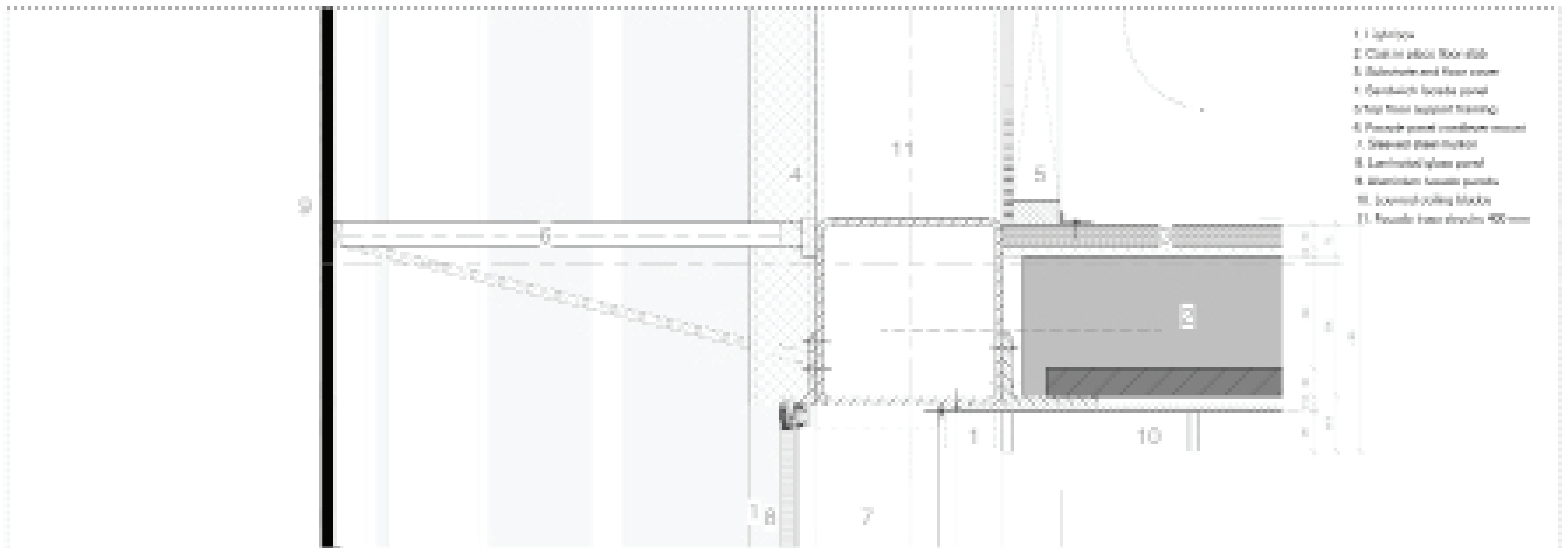


FACADE FRAGMENT  
SCALE 1:50

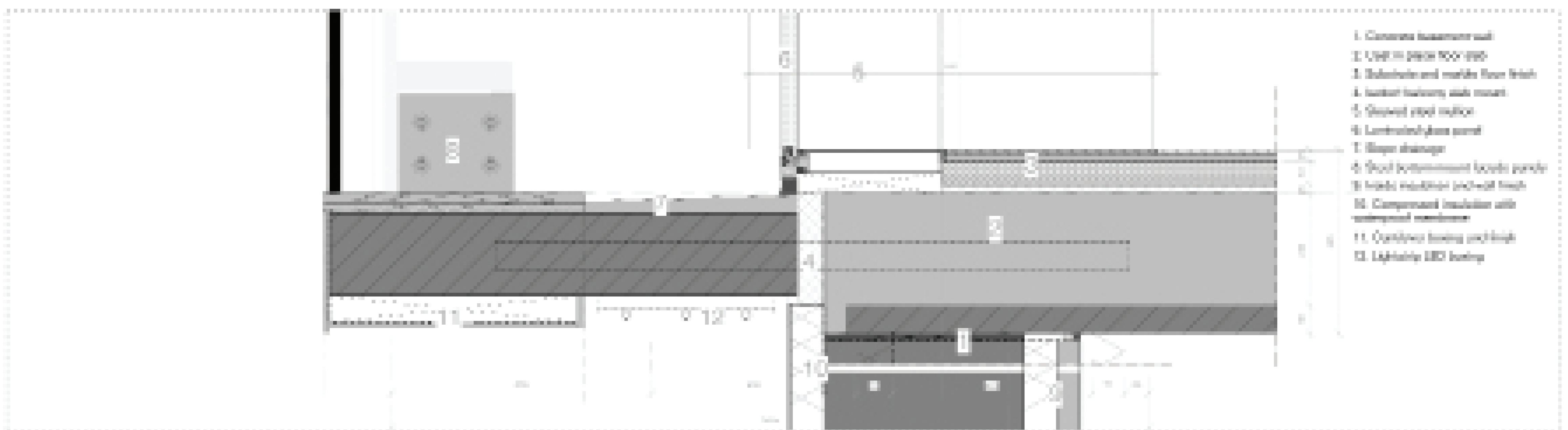


FRAGMENT DETAIL  
SCALE 1:20

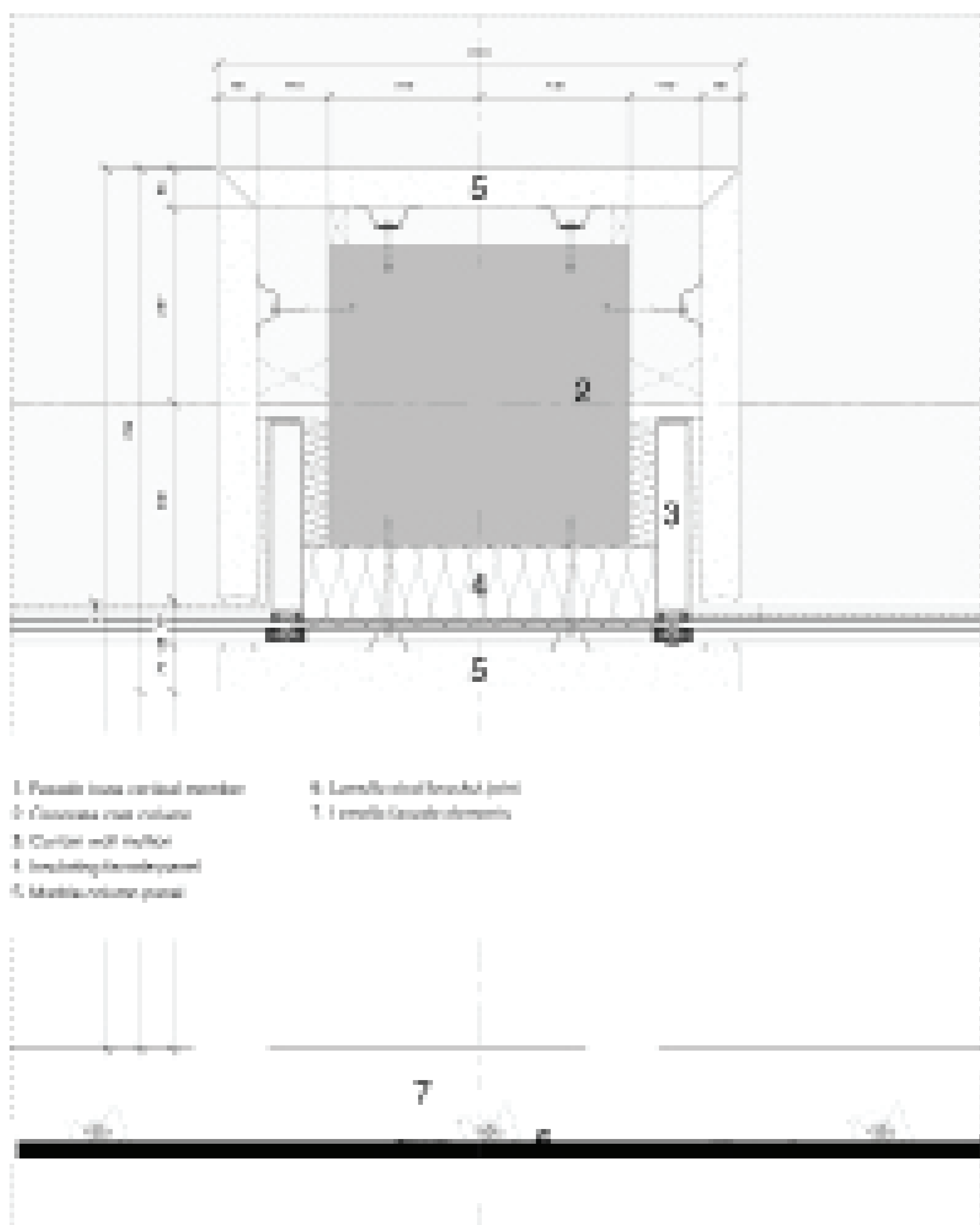




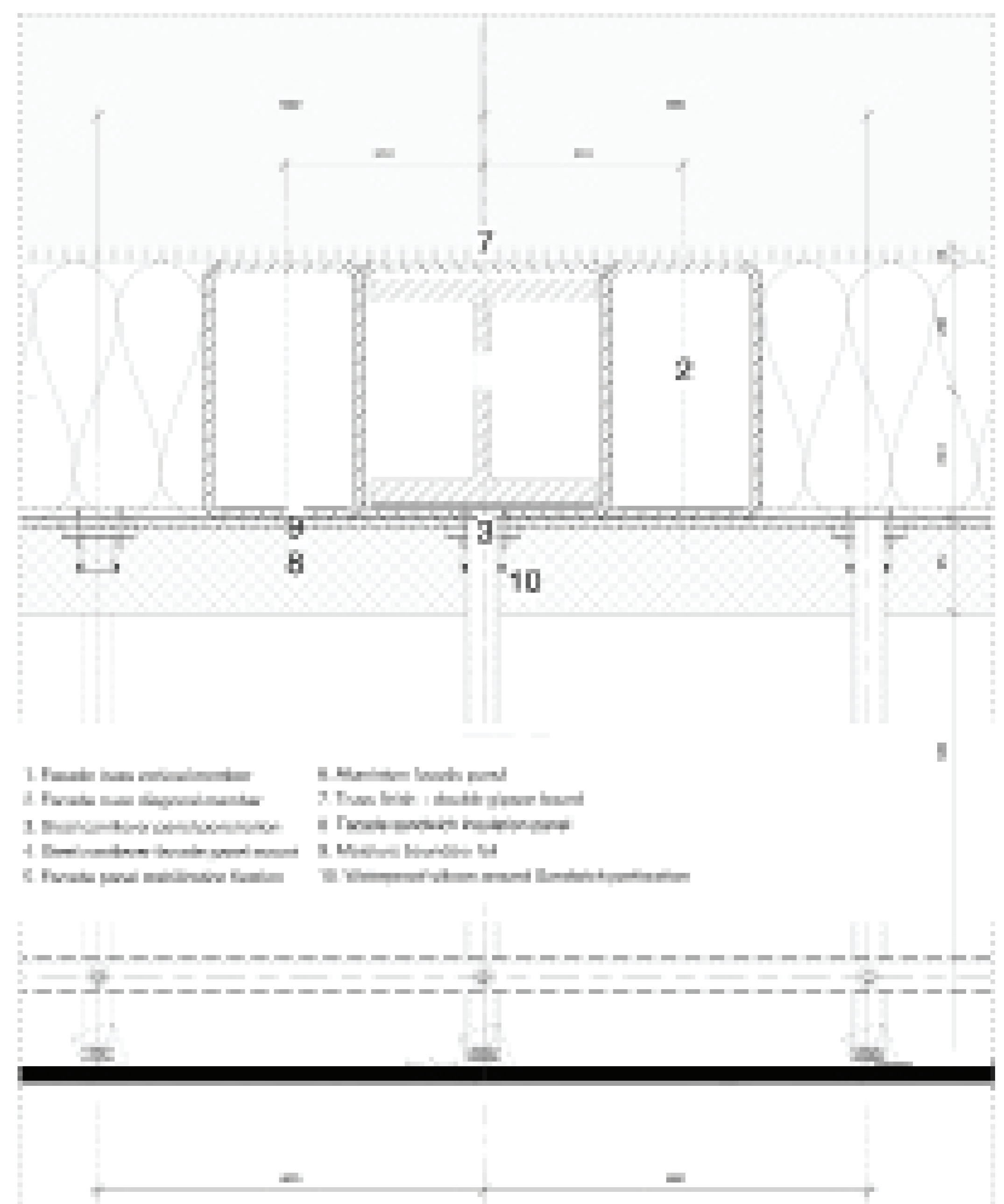
DETAIL V2



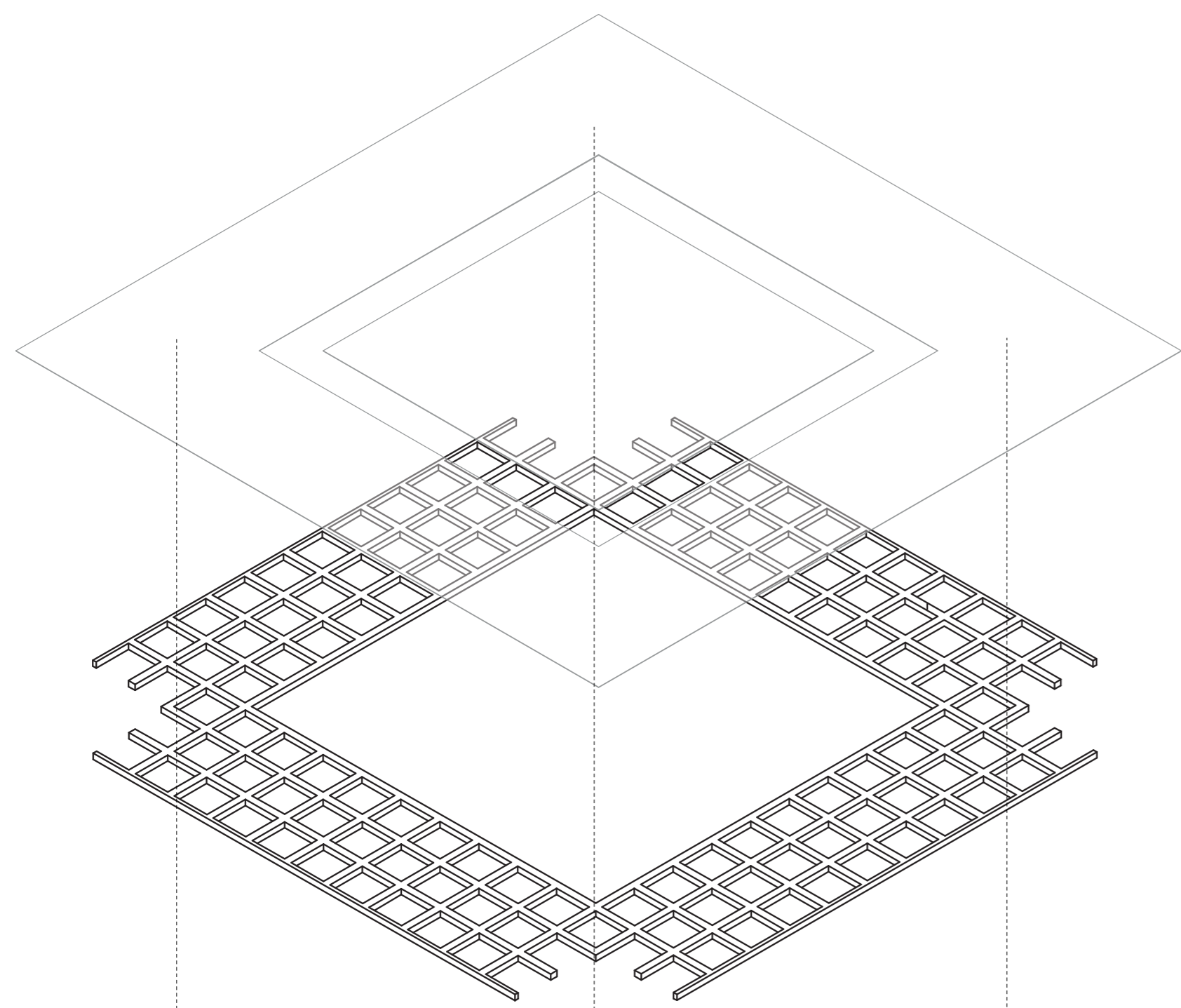
DETAIL V1



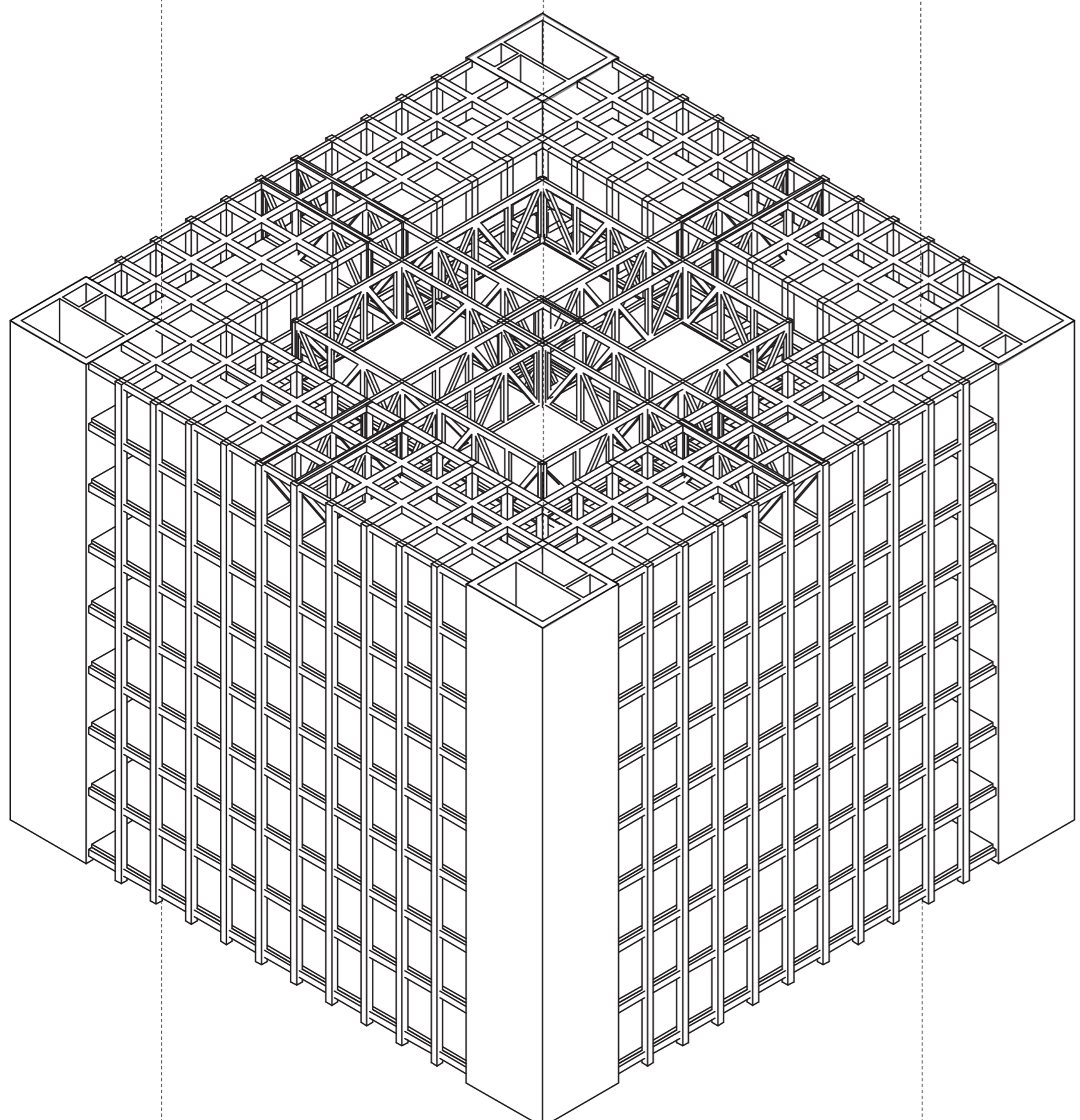
DETAIL H1



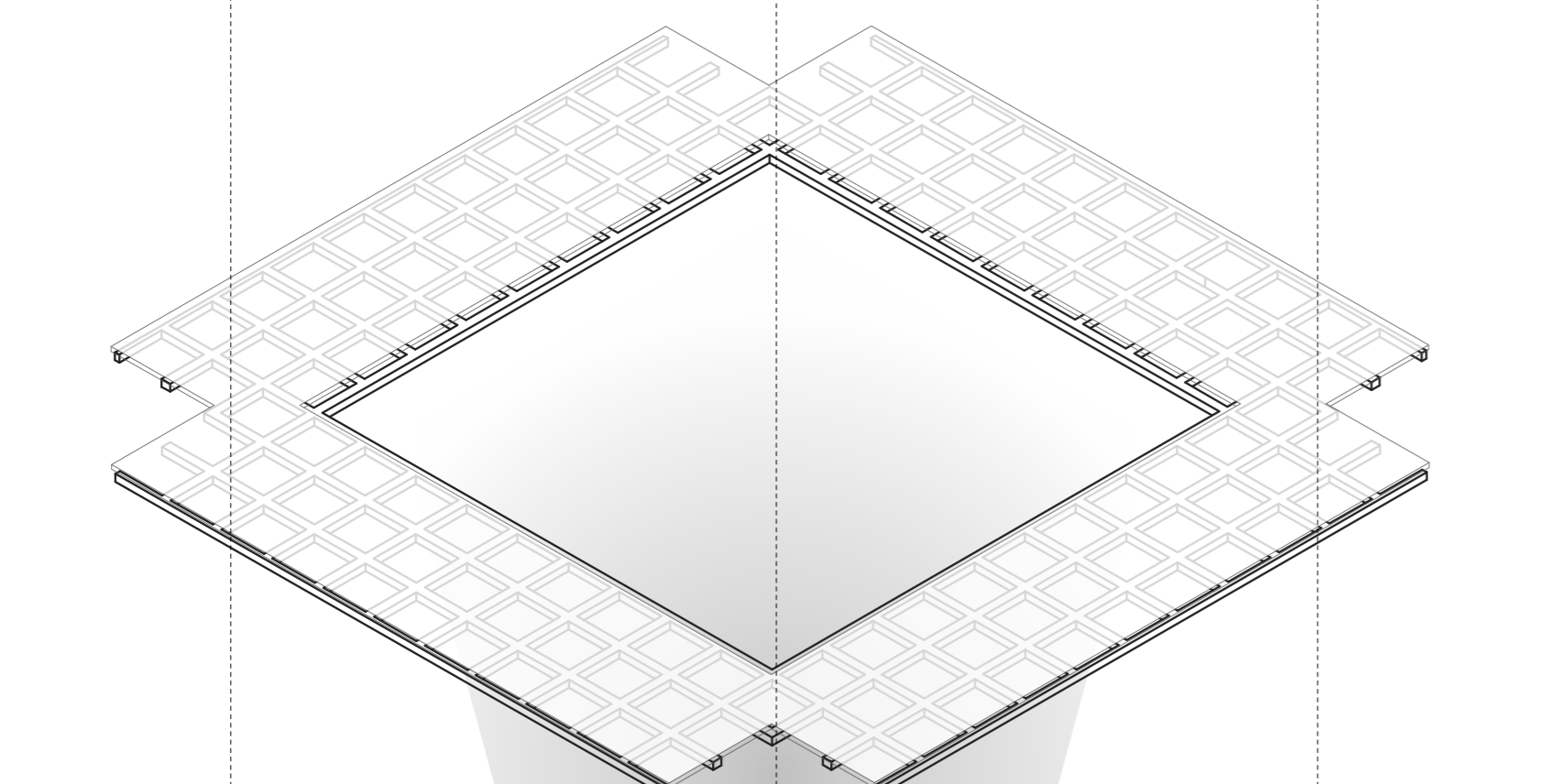
DETAIL H2



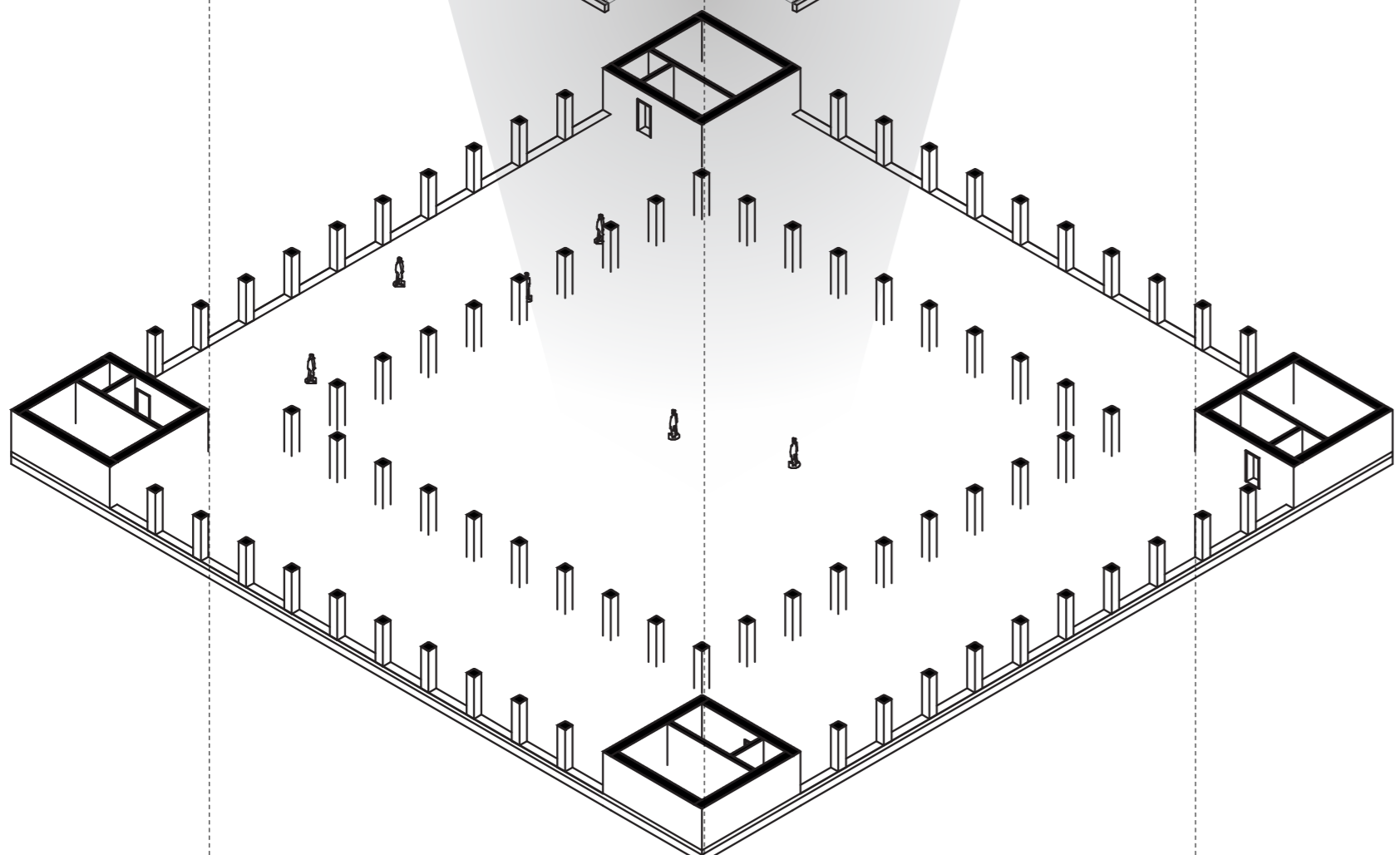
**ROOF SYSTEM**  
Lightweight roof allows for a full enclosed building volume, leaving the data farms entirely protected and safe. Structurally identical roof system



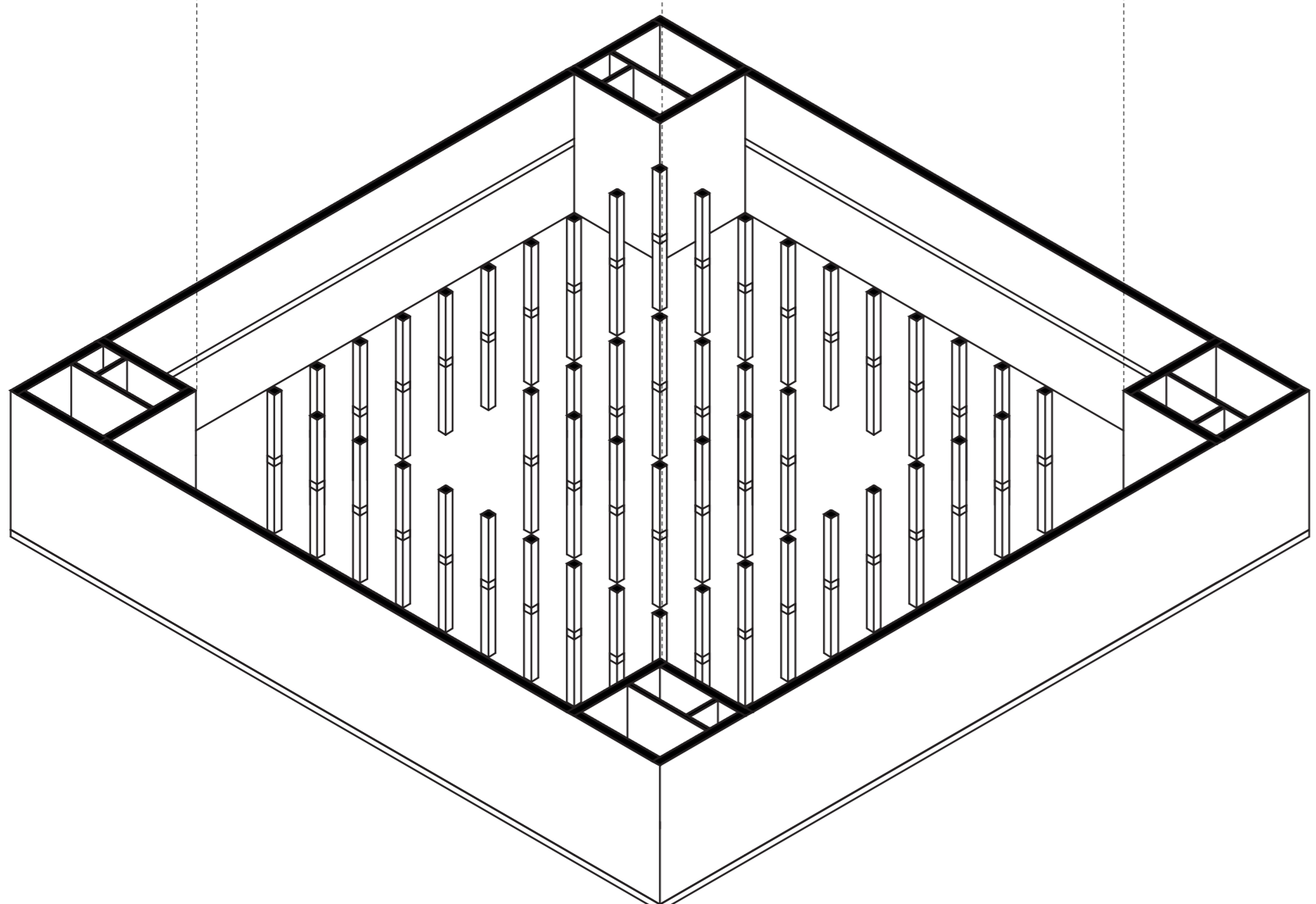
**MONOLITH VOLUME**  
The monolith volume allows for a highly rational and simplified overall building structure. Cores, beams and columns are based on a grid derived from the buildings perimeter dimensions.



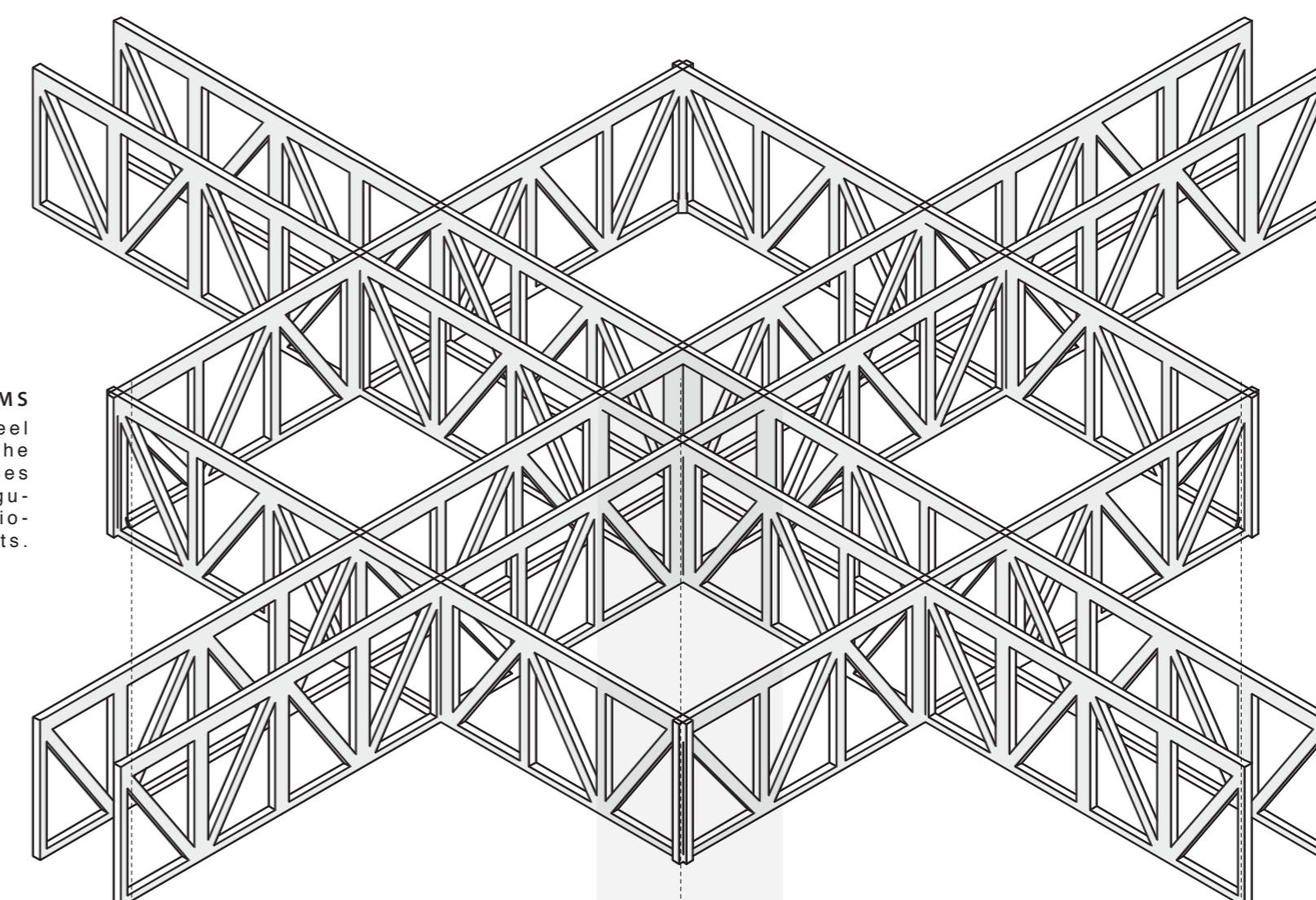
**STRUCTURAL FLOOR SYSTEM**  
Grid of primary and secondary concrete beams interconnecting four columns and provide a support for data farms



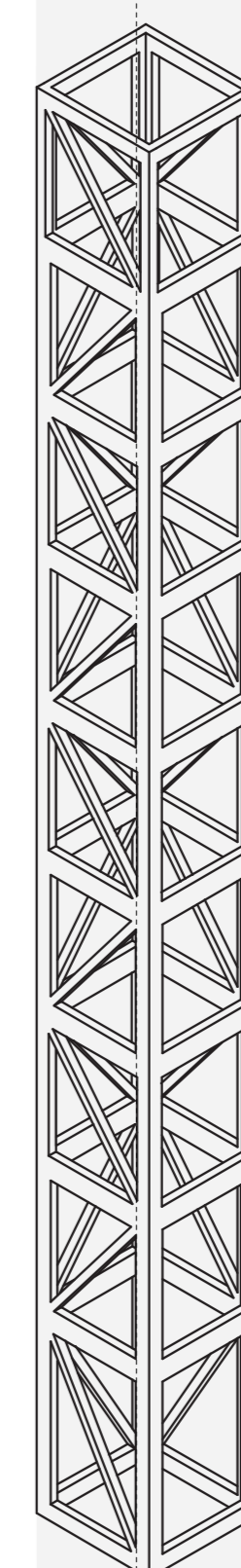
**STABILITY**  
Quad core formation provides overall stability, rational column grid and floor grid interconnect four cores.



**BASEMENT**  
Core building foundation, float preventing soil piling

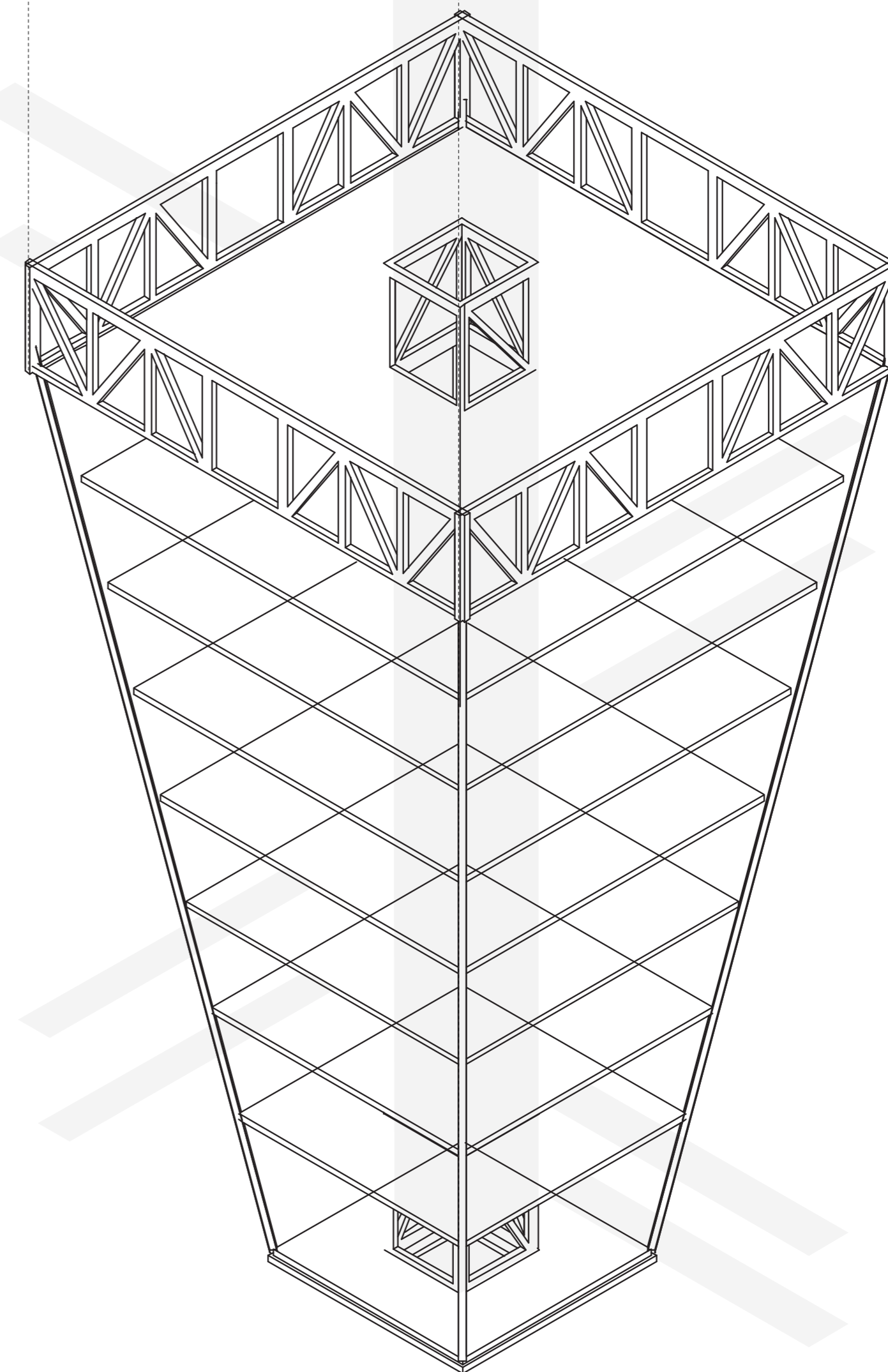


**TRUSS SYSTEMS**  
Full floor height-lightweight steel trusses allows for suspension of the inner cone. Cross connected trusses are the main support. The rectangular quad formation provides additional suspended floor supports.



**CONE CORE**  
A vertical array of four steel trusses is the interconnecting element of the cone. Functions as stabilizer and liftshaft.

**LIGHTWEIGHT CONE STRUCTURE**  
An array of lightweight floors suspended from steel trusses and tension columns for the structural basis of the buildings central cone.



**INTERCONNECTING BRIDGED**  
Additional to the trusses, a number of bridges connect the cone to the main building perimeter, allowing for additional stability of the cone and functional circulation

BASEMENT