

Wave loads on ocean infrastructure increase as a result of waves passing over abrupt depth transitions

Li, Zhenhao; Tang, Tianning; Li, Yan; Draycott, Samuel; van den Bremer, Ton S.; Adcock, Thomas A.A.

DOI

[10.1007/s40722-022-00269-4](https://doi.org/10.1007/s40722-022-00269-4)

Publication date

2022

Document Version

Final published version

Published in

Journal of Ocean Engineering and Marine Energy

Citation (APA)

Li, Z., Tang, T., Li, Y., Draycott, S., van den Bremer, T. S., & Adcock, T. A. A. (2022). Wave loads on ocean infrastructure increase as a result of waves passing over abrupt depth transitions. *Journal of Ocean Engineering and Marine Energy*, 9(2), 309-317. <https://doi.org/10.1007/s40722-022-00269-4>

Important note

To cite this publication, please use the final published version (if applicable).
Please check the document version above.

Copyright

Other than for strictly personal use, it is not permitted to download, forward or distribute the text or part of it, without the consent of the author(s) and/or copyright holder(s), unless the work is under an open content license such as Creative Commons.

Takedown policy

Please contact us and provide details if you believe this document breaches copyrights.
We will remove access to the work immediately and investigate your claim.



Wave loads on ocean infrastructure increase as a result of waves passing over abrupt depth transitions

Zhenhao Li¹ · Tianning Tang¹ · Yan Li^{1,2} · Samuel Draycott³ · Ton S. van den Bremer^{1,4} · Thomas A. A. Adcock¹

Received: 14 May 2022 / Accepted: 1 November 2022
© The Author(s) 2022

Abstract

Abrupt changes in water depth are known to lead to abnormal free-surface wave statistics. The present study considers whether this translates into abnormal loads on offshore infrastructure. A fully non-linear numerical model is used which is carefully validated against experiments. The wave kinematics from the numerical model are used as input to a simple wave loading model. We find enhanced overturning moments, an increase of approximately 20%, occur over a distance of a few wavelengths after an abrupt depth transition. We observe similar results for 1:1 and 1:3 slopes. This increase does not occur in linear simulations.

Keywords Ocean waves · Steps · Wave loads · OceanWave3D · Kinematics · Abrupt depth transitions

1 Introduction

Ocean waves are central to the study of ocean engineering and are a key design driver for many marine energy devices. Standard models of wave statistics assume that the underlying freely propagating components are uncorrelated. However, situations may arise where correlations are present between components, and this leads to a greater number of large waves than would otherwise be expected. Such waves can be considered rogue or freak waves (see reviews by Dysthe et al. (2008); Adcock and Taylor (2014)).

One mechanism which can cause an increased number of large waves is where waves propagate over a rapid change in water depth. This mechanism was identified a decade ago (Trulsen et al. 2012) and has since motivated many researchers (Gramstad et al. 2013; Ducrozet and Gouin 2017; Bolles et al. 2019; Zhang et al. 2019; Zheng et al. 2020;

Monsalve et al. 2022). One mechanism that has been proposed attributes the enhanced number of large waves to the interaction between second-order bound and the free waves additionally released due to a depth transition (Li et al. 2021b, c). For a train of Stokes waves experiencing abrupt depth transitions, a second-order theory was derived by Masel (1983), in agreement with the experimental observations by Monsalve Gutiérrez (2017). Li et al. (2021b, c) have extended the theory to allow for a narrow-band wavepacket and a statistical analytical model for a train of irregular random waves, respectively. These have been found to be in good agreement with both numerical and laboratory observations. An alternative explanation, which may also be important, or indeed coupled, is that sea-states are pushed out of equilibrium leading to an increase in rogue waves as the sea-state adjusts to the new equilibrium (e.g., Viotti and Dias (2014); Mendes et al. (2022); Zeng and Trulsen (2012)). Such effects can also contribute to the number of extreme waves generated.

The focus of most of the past work has been on free-surface wave statistics. However, for practical engineering purposes such as loading on offshore wind turbines, the wave kinematics may be of greater interest, as they are more closely related to the loads. Recent research has started to investigate the wave kinematics. A new method for the calculation of water-particle kinematics based on the fully non-linear Variational Boussinesq model was developed and applied to the problem of waves propagating over a slope by Lawrence

✉ Tianning Tang
tianning.tang@eng.ox.ac.uk

¹ Department of Engineering Science, University of Oxford, Oxford OX1 3PJ, UK

² Department of Mathematics, University of Bergen, Allégaten 41, Bergen 5007, Norway

³ Department of Mechanical, Aerospace and Civil Engineering, University of Manchester, Manchester M60 1QD, UK

⁴ Faculty of Civil Engineering and Geosciences, Delft University of Technology, Delft 2628 CD, The Netherlands

et al. (2021a) and Trulsen et al. (2020). The statistics of wave kinematics in long-crested irregular waves propagating over a shoal is studied by Lawrence et al. (2021b) using a Monte Carlo approach. The evolution of kurtosis and skewness of the horizontal velocity is discussed, and the statistical properties are compared to laboratory experiments. Trulsen et al. (2020) conduct the experiments of long-crested irregular water surface waves propagating over a shoal. The location of local maximum and local minimum of skewness and kurtosis are investigated in terms of the surface elevation and the horizontal fluid velocity. In addition, Bateman et al. (2003) investigate the calculation of the water particle kinematics generated by the propagation of surface gravity waves.

Our work seeks to examine the wave kinematics and loads induced on an idealised structure in the vicinity of an abrupt depth transition. We use fully non-linear potential-flow simulations which explicitly solve for the wave kinematics.

2 Numerical and experimental methodology

2.1 Experimental setup

In this paper, the experimental data are taken from Li et al. (2021a, b). In the experiment, only surface elevation is measured. The experimental setup is presented in Fig. 1. A total of 16 gauges were used to measure the waves and the locations of 16 gauges are shown in Table 1. Our study primarily focus on the results at gauges 1, 3, 8, and 11 and the measurements at these 4 gauges are selected for comparison with the numerical simulations. The width of the flume is 0.6 m and the length is 35 m. The top of the slope is 7.5 m away from the wave-maker. The water depth of the deeper water side, h_d , is 0.55 m and the water depth of the shallower water side, h_s , is 0.2 m. Thus, the height of the slope is fixed as 0.35 m. The slopes are indicated by the dashed lines in Fig. 1, showing a slope of both 1:1 and 1:3.

2.2 Numerical setup

OceanWave3D (OW3D) is used to model the waves (see Engsig-Karup et al. (2009)) and the governing equations of OW3D are shown in Appendix A.

Potential-flow equations for surface gravity waves are solved by OW3D in a three-dimensional Eulerian frame, which gives the kinematics information not only at the free-surface boundary but also at all the vertical nodes hence allowing full kinematic reconstruction. Thus, the wave kinematics are extracted directly during the time-marching process without any further assumptions. A classical fourth-order Runge–Kutta time-marching scheme is used. A σ -coordinate transformation is applied to map the vertical solutions to a time-invariant grid, which can also be used

to solve the fully non-linear potential-flow equations with variable bathymetry.

Wave breaking is implemented using a local smoothing function. This local smoothing function monitors the particle downward acceleration of the free surface (\tilde{w} in the governing equations of OW3D, see Appendix A) and it removes a small amount of energy locally until the acceleration is below the threshold. In our simulation, the local smoothing function is triggered when the detected acceleration is greater than $0.4g$ (where g is the gravitational acceleration), which follows previous work (Tang et al. (2021)). Interestingly, in this study, we have experienced unusual breaking events especially around the abrupt depth transitions. These strong breaking waves caused difficulties to get convergence with this simplified breaking model, which helps further stabilise the numerical scheme. The simplified breaking model can only be applied once at each time step. Thus, we found a small number of events occurred where it is presumed, the wave was breaking caused the code to stop. This suggests that breaking at the top of the slope may have significant differences from waves on a flat bathymetry, which is consistent with the recent work of Draycott et al. (2022). When the code stops, a finer resolution in temporal domain is applied to allow the breaking model to trigger over more timesteps allowing the code to compute through the point at which it could not converge with the normal time step. After passing this point, we change to the original resolution until meeting the next crash point.

The model also has a ‘linear’ version which we use in this paper. This version solves the classic linear form of the water wave equations. In the linear model of OW3D, the surface elevation profile is set to zero in the σ -coordinate transformation and the non-linear terms in the free-surface boundary conditions were also neglected, which leads to generated waves follow the linear wave theory (see Bingham and Zhang (2007) for detailed implementation of this model).

The numerical domain is almost identical to that used in the experimental case, and the relative location of gauges is the same as in the experiment. In our numerical domain, we use gauge 3 as our datum ($x = 0$ m in the numerical domain), so locations upstream of this are negative. In our simulations, the peak frequency of the input waves is 0.8 Hz. The wavelength is 2.23 m and 1.6 m on deep and shallow side, respectively. The water depth on the deep side and shallow side is 0.55 m and 0.2 m, respectively, which is the same as experimental setup. we consider two different slopes: a slope of 1:1 and one of slope 1:3. The input waves and numerical domain are the same for both cases. The length of the numerical domain, L_x , is 54 m (from $x = -21.88$ m to $x = 32.12$ m a length of 24 wavelengths) and the number of nodes on the x -axis, N_x , is 3500. The number of nodes on the z -axis, N_z , is 20. The timestep, Δt , is 0.03125 s (40 time steps per wave period) and a total time duration of 3.5 h of wave propagation

Table 1 The locations of 16 gauges in the experiment

Gauge no.	1	2	3	4	5	6	7	8
Position x (m)	- 1.88	- 0.10	0.00	0.10	0.30	0.50	0.70	0.90
Gauge no.	9	10	11	12	13	14	15	16
Position x (m)	1.10	1.50	5.00	7.50	10.0	14.0	15.0	18.0

Position x indicates the distance to the top of the slope, and positive value indicates gauges after the top of the slope (from Li et al. (2021a))

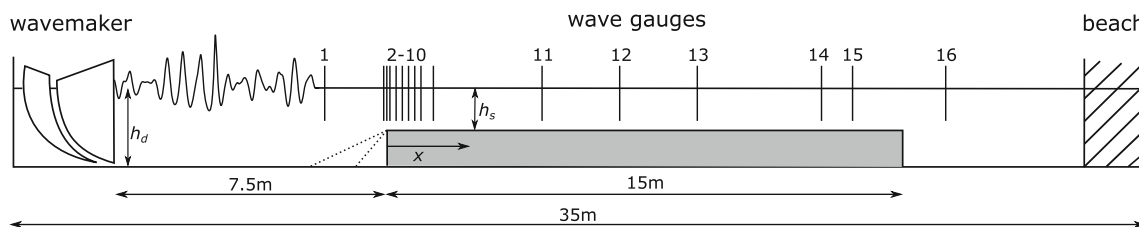


Fig. 1 Diagram of experimental setup including gauges, step, beach, and wave-maker positions (from Li et al. (2021b))

is simulated for both cases. Waves are generated using a double relaxation zone to help absorb reflected waves, which is located from $- 21.88$ to $- 1.88$ m (9 wavelengths). At the end of the domain, waves are absorbed using a pressure boundary condition. Thus, a damping zone is applied at the end of the domain and the length is 10 m (from $x = 22.12$ m to $x = 32.12$ m and corresponding to 4.5 wavelengths). The top of the slope is located at $x = 0$ m in the numerical domain for both cases, which is 1.88 m away from the end of the relaxation zone ($x = - 1.88$ m). The same numerical setup is adapted for both linear and non-linear model of OW3D simulations. The steepness of the slope is changed by changing the length of the slope. The discretisation used is based on the study of Barratt et al. (2020) and a grid convergence study on the same geometry used here is presented in Li et al. (2022).

2.3 Input waves

In this paper, we primarily consider random wave simulations. In the experiments, the waves are drawn from a JONSWAP spectrum with peak enhancement factor, $\gamma = 3.3$, and the JONSWAP spectrum is developed by Hasselmann et al. (1973)

$$S(\omega) = \frac{\alpha g^2}{\omega^5} e^{-5/4(\omega_p/\omega)^4} \gamma^{\exp(-1/2(\omega - \omega_p/s\omega_p)^2)}, \quad (1)$$

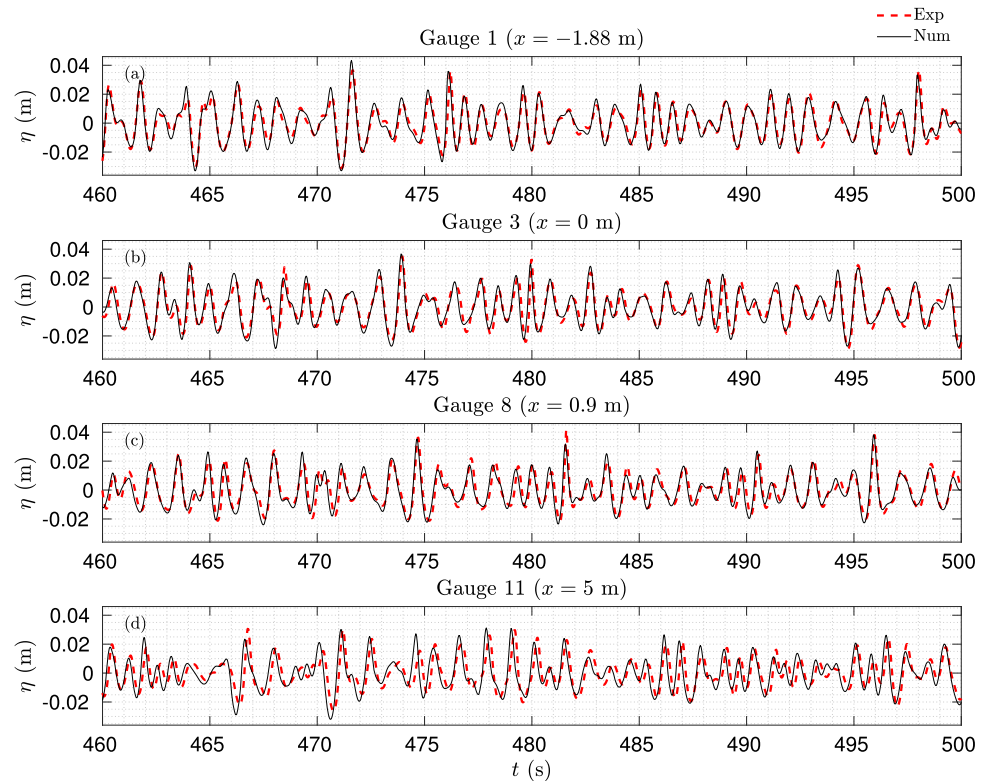
in which ω_p is the peak frequency ($\omega_p = 2\pi/T_p$) and the parameter $s = 0.07$ for $\omega < \omega_p$ and $s = 0.09$ for $\omega > \omega_p$. The input measured significant wave height at the first gauge of the experiments was $H_s = 0.045$ m giving a significant steepness of $\frac{1}{2}H_s k_p = 0.064$ (the peak wave number, k_p , is 2.81m^{-1} on the deep side). The peak frequency of the input waves is 0.8 Hz giving a non-dimensional water depth on the deep side of $k_p h_d = 1.55$ and, assuming linear shoaling, a

non-dimensional depth on the shallow side of $k_p h_s = 0.79$. In our simulations, the experimental data at gauge 1 are used as input for the OW3D simulations. We ignore the first 300 s of the experiment to allow the waves to reach a steady state.

3 Validation against experiments

Extensive verification and validation, in addition to a convergence study, of the model used in the present paper was undertaken in Li et al. (2022) and is not repeated here. This previous work focused on deterministic wave groups rather than random waves as are studied here. As such, we here focus on the aspects of the modelling that apply to random waves but not to deterministic groups. These aspects are principally the wave generation and wave breaking (as the groups in the previous work were designed not to break). We note that the wave generation in the numerical model is different from that in the experimental model. In addition, this potential-flow solver can never fully capture the non-potential-flow physics induced by wave breaking (e.g., Eelink et al. (2022)) and vortex shedding due to the sharp edge at the top of the slope. The experiments and numerics will also differ in that some dissipation from the side walls will occur in the experiments and also differ in wave absorption with more complete absorption being expected in the numerical scheme. Another expected source of inaccuracy is that we use experimental data at gauge 1 as input to the numerical model. However, these data include waves reflected off the depth transition which are travelling in the opposite direction. In our validation, we present results for the 1:1 slope as similar results are observed for the 1:3 case, and intuitively, the latter case is expected to be marginally easier to simulate as non-linear physics is likely to be less severe.

Fig. 2 Representative time histories of surface elevation at different gauges comparing experimental and numerical result (1:1 slope case), where x indicates the distance from the top of the slope, η the surface elevation, and t time



Despite the aforementioned limitations due to the potential-flow solver used, we generally find good agreement between experiments and numerics. Figure 2 shows a representative time series of the free surface η for the 1:1 slope case at several gauges. Given the differences between experiment and numerics, the agreement is generally good. Waves are well aligned in time and the magnitudes are adequately captured. The differences between the numerically generated waves and experimental results at Gauge 1 can be attributed to various causes. We assume that all the wave component measured at Gauge 1 during experiments are propagating downstream, whereas they are actually composed of both incident waves and reflected waves from the step and from the beach during the experiments. The numerical results measured at the end of relaxation zone also include reflections, especially from the slope, which also contribute to the deviation. We have applied a double relaxation zone to absorb these reflections, but there is also a compromise between being able to make the exact waves and reducing the influence of reflected waves. There also seems to be a systematic horizontal shift especially at gauge 11. One of the reasons for this can be the minor error between experiments and simulations in terms of the exact location of gauges or the slope. Bed and sidewall frictions could also contribute to horizontal shifts at far away gauges.

Next, we look at the significant wave height H_s at our four gauges. The significant wave height is defined by the mean

of the largest 1/3 of the waves and the individual wave is determined by zero up crossing. The significant wave height of numerical and experimental results are shown in Fig. 3. In terms of the experimental and numerical results at gauge 1, 3, 8, and 11, they are shown in Table 2. Our simulations are based on the experimental results at gauge 1. The 1% difference in H_s at gauge 1 is a result of combined reasons mentioned above, and the discrepancy at all locations is small with both experiment and numerics showing similar trends.

We now turn to height statistics. Figure 4 presents the probability that a given wave height is exceeded at a particular location. We include both fully non-linear simulations as well as otherwise identical simulations using the linear model. The agreement between non-linear simulation and experiment is generally good, showing similar departures from the Rayleigh distribution and linear simulation after the step. The Rayleigh distribution without modification is based on a narrow-band assumption and it is the most commonly adopted distribution for the crest to trough wave heights as well as the starting point for many other models. The exceedance probability of wave height follows the Rayleigh distribution for narrowbanded linear waves. The Rayleigh distribution is given by

$$\text{Pr} = -\exp\left(-\frac{H^2}{8m_0}\right), \quad (2)$$

Fig. 3 The significant wave height H_s at different gauges for numerical and experimental results (1:1 slope case)

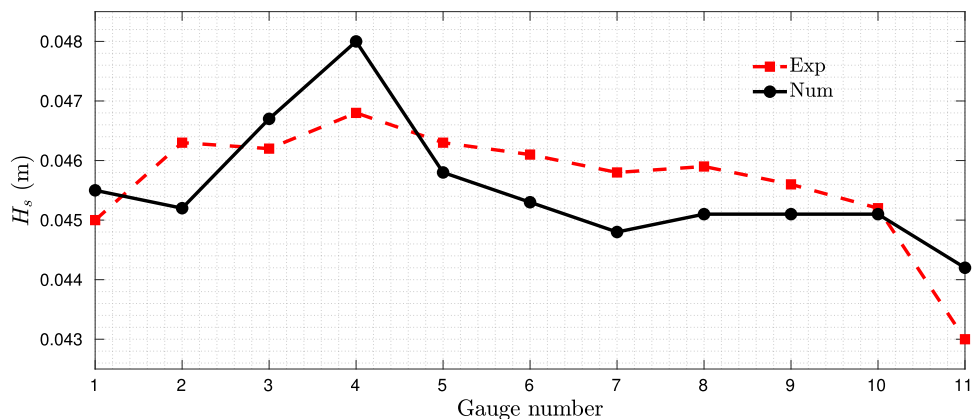


Table 2 Significant wave height (H_s) of numerical (1:1 slope case) and experimental results at gauge 1, 3, 8 and 11

Gauge no.	1	3	8	11
Numerical H_s (m)	0.0455	0.0467	0.0451	0.0442
Experimental H_s (m)	0.0450	0.0462	0.0459	0.0430
Relative differences (%)	1.1	1.1	1.7	1.9

where m_0 is the zeroth-order moment of the spectrum and this equation describes the probability of a wave height is bigger than a given wave height H .

Although within the confidence intervals, the numerical simulation does seem to slightly under-predict the number of large waves at gauge 8 ($x = 0.90$ m) and more clearly (although still within confidence intervals), does so at gauge 11 ($x = 5.00$ m) some way after the change in depth. This contrasts with a smaller over-prediction by the non-linear model at gauges 1 and 3. Given the multiple minor differences in setup between experiment and simulation, it is hard to identify the reason for these small differences. However, agreement is sufficient to have confidence in our simulation. There is also an unexpected discrepancy between the linear simulations and the Rayleigh distribution at gauge 11.

We also consider the average shape of an extreme event. Although, here, we are primarily using this for validation, this is, to our knowledge, the first time this has been examined for the wave over a steep slope problem. In our analysis, we are focused on the average shape of an extreme event at gauges 1, 3, 8, and 11. Based on our simulation results, there are approximately 12,000 waves at each gauge in both the 1:1 and 1:3 slope cases. We find the largest 40 waves measured at each gauge and find their average shape. The number of waves chosen is a trade-off between capturing the extremes and statistical variability. Under a theoretical linear model, the expected shape of an extreme event is given by the scaled autocorrelation function—the ‘NewWave’ (Lindgren 1970;

Boccotti 1983; Tromans et al. 1991)

$$\eta(t) = \frac{1}{m_0} \int_0^\infty E(f) \cos(2\pi ft) df, \tag{3}$$

in which $E(f)$ is the spectrum, and m_0 is the zeroth-order moment of the spectrum. f is the peak frequency, and t is time. $\eta(t)$ indicates the NewWave profile. The linear model predicts a symmetric wave packet around an extreme event. Deviation from the linear model is expected at all gauges as bound harmonics will significantly modify the shape. However, we include the linear-model prediction for reference.

We analyse the resulting shape in Fig. 5. At the input gauge 1, there is a minor asymmetry in the numerical simulations. At gauge 3 (at the top of the slope), both numerics and simulation suggest some minor asymmetry with the trough preceding a large wave being slightly deeper than that following it. Gauge 8, roughly half of the wavelength after the top of the slope, shows some clear discrepancies from the standard ‘NewWave shape’. The trough preceding the largest wave is relatively sharp, whereas, at this location, the trough after is far flatter. This is consistent with the shape observed for deterministic wavegroups and has been explained by the release of bound waves at the step (Li et al. 2021b). Both experiments and numerics show similar results, suggesting strongly that the simulations are capturing the physics of bound wave release. The results at the final gauge (gauge 11), after the point we are primarily interested in, show the waves returning to a more standard symmetrical shape, although some deviation from this can still be seen in both experiments and numerics. There are also some significant differences between the shapes predicted computationally and observed experimentally at gauge 11 (as results for wave height statistics also suggested). It is unclear why there is this difference. However, gauge 11 is beyond the main area we are interested in, so, whilst we note the discrepancy, we do not think this should invalidate the main conclusions of this paper.

Fig. 4 Comparison of experimental and simulated wave height statistics with 90% confidence intervals at gauge 1, 3, 8, and 11 for the 1:1 slope case. Wave heights (H) are normalised by the significant wave height (H_s)

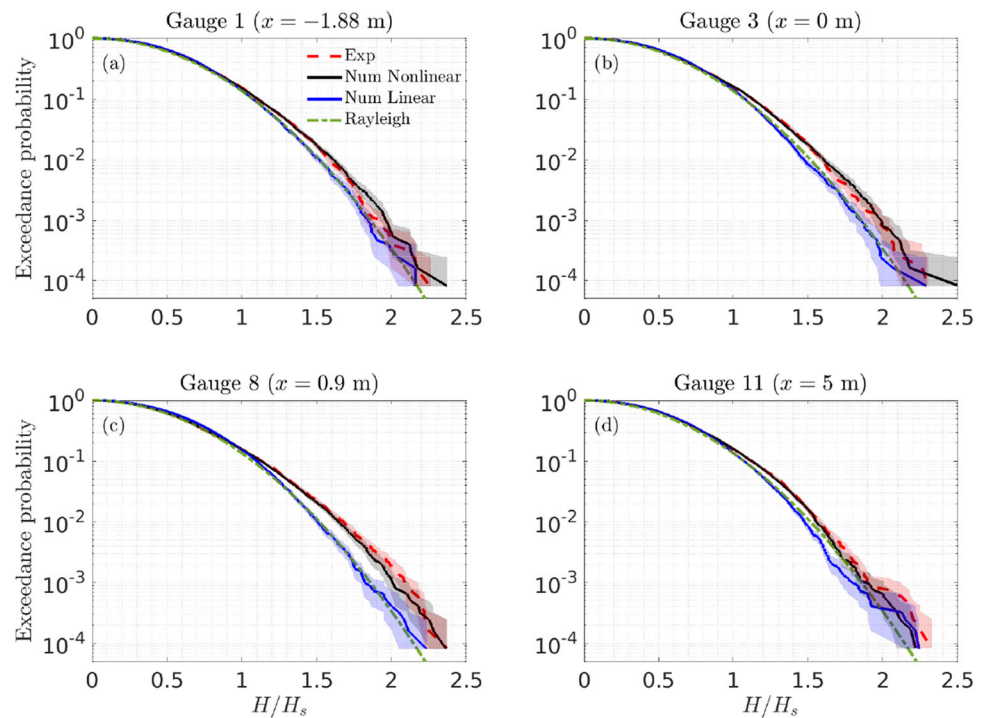
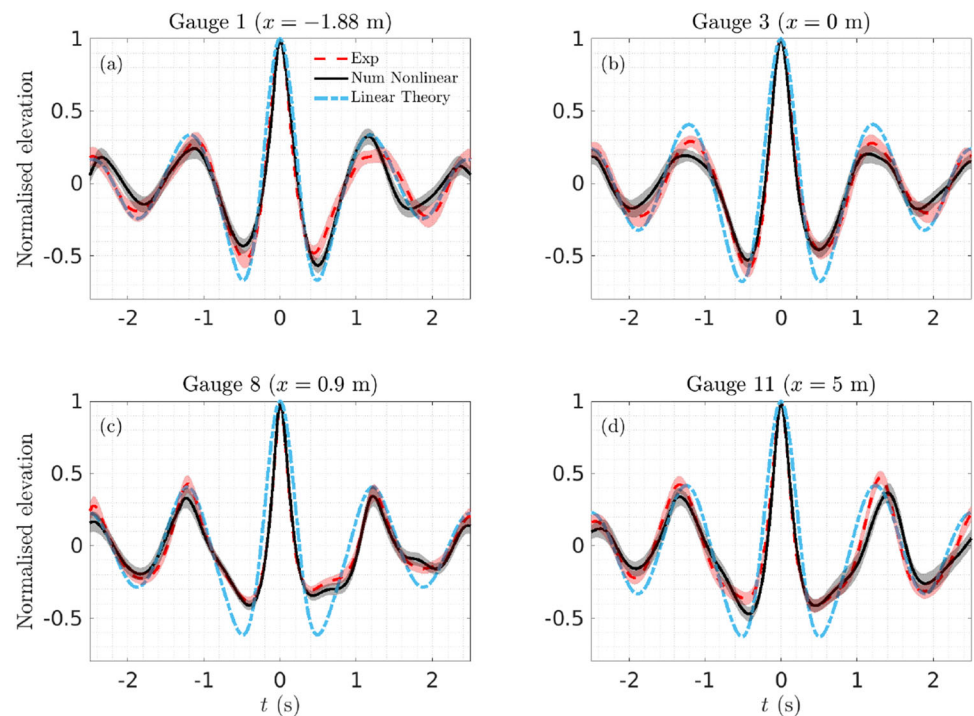


Fig. 5 Average of the 40 large crests normalised by the value at the largest crest for the 1:1 slope case with 90% confidence intervals, where t is the time relative to the largest crest and x indicates the distance from the top of the slope

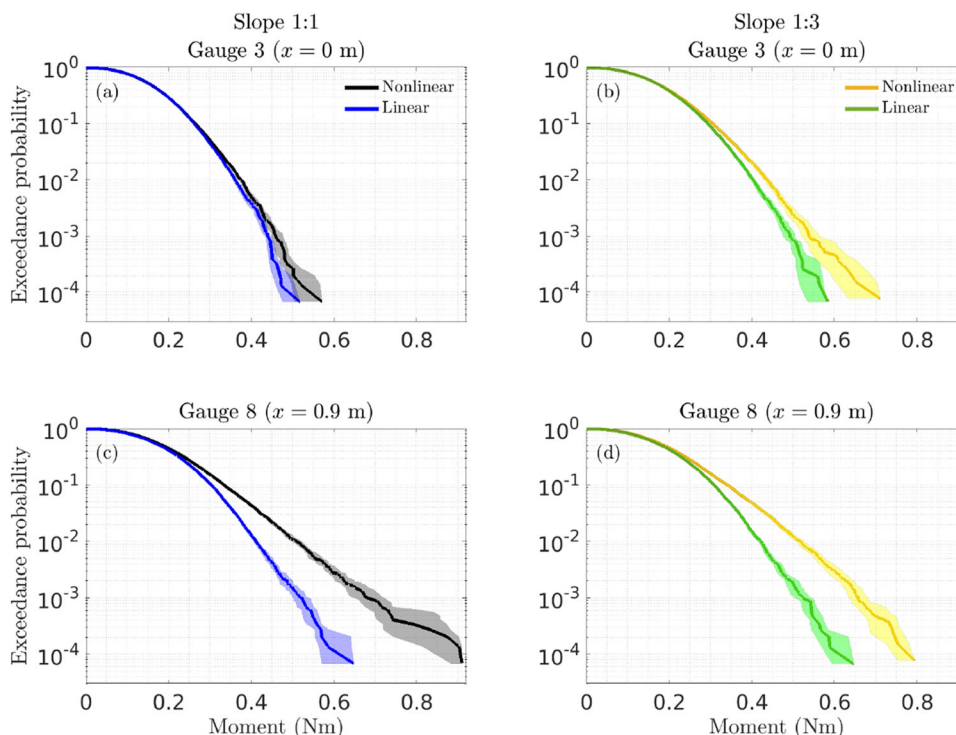


4 Results

We consider the engineering aspects of the enhanced rogue wave activity at the top of slopes. There are many different wave/structure interactions one could consider all with their different characteristics. In the present paper, we consider a simplest model of waves interacting with a column as this is

a useful general example. For simplicity, we follow the general approach taken recently by Klahn et al. (2021) of using a model based only on the fluid kinematics so as to avoid having to solve any complex wave/structure interaction problem. The choice of this model is not critical to the conclusions of this paper—the aim is to do a calculation which relies on the

Fig. 6 Comparison of moment statistics for slope 1:1 and slope 1:3 at gauge 3 and 8. Two gauges are shown with 90% confidence intervals. Moment is the total moment around the sea-bed after the slope



kinematics rather than the free surface considered in most studies.

We model the structure using the drag term of the Morison’s equation (Morison et al. 1950). In this case, a monopile of a diameter (D) of 0.5 m ($D/\lambda = 0.225$) is selected, and the load per unit length on the monopile is a function of the undisturbed horizontal velocity, which is given by

$$F(x, t) = \frac{1}{2} \rho D C_D u |u|, \tag{4}$$

where $F(x, t)$ is the force per unit length on a fixed vertical cylinder located at a specific spatial location x , ρ is the water density, C_D is the drag coefficient ($C_D = 1.2$), and u is the horizontal velocity at corresponding time and location.

We choose to analyse the moment around the sea-bed as this is probably the most important feature for the design of a typical offshore structure. From the OW3D simulations, we calculate the horizontal velocity. We can calculate the total moment around the sea-bed by integration before calculating the peak moment in each loading cycle. We only consider this after the top of a slope as the different water depths before this point would confuse the analysis as the change in the sea-bed depth would dominate the change in moments. In Fig. 6, moment exceedance is presented for gauges 3 (top of slope) and 8 (slightly after top of slope) and both 1:1 and 1:3 slopes showing both linear and non-linear simulation results. The linear simulations predict very similar moments in all cases and these are always lower than that predicted by the non-linear model. However, the departure from the linear is very

much larger for gauge 8 than just at the top of the slope at gauge 3. This difference is greater for the steeper slope (1:1 case). Interestingly, at gauge 3, there is a bigger difference between linear and non-linear for the milder slope (1:3 case), likely due to the different phase shifts of second-order bound and free waves between the two cases. At the top of a slope, a steeper slope may lead to the second-order waves more out of phase and, therefore, smaller amplitude of second-order waves. As a consequence, it would lead to smaller differences between the non-linear and linear simulations for a steeper slope case, as noted. This finding is consistent with the observations in both Li et al. (2021b) and Zheng et al. (2020) due to the following. The former found both a larger skewness and kurtosis at gauge 3 for the case of 1:3 slope (i.e., their Figs. 2 and 3) compared to the case of 1:1 slope. Zheng et al. (2020) (i.e., their Table VI) suggests a slope gradient plays an important role in the location of the peak kurtosis and skewness relative to the top of a slope, which is the furthest and nearest for the steepest slope (a step) and the mildest slope, respectively.

To analyse extremes, we consider the overturning moment which corresponds to the 1-in-1000 wave event. Thus, in Fig. 7, the moment is the moment corresponding to a probability of 10^{-3} in the moment exceedance figure as a function of spatial location.

We see very similar behaviour for both slopes except in the non-linear simulations very near the top of the slope where higher loads are predicted for the flatter (1:3) case. This may be the result of a slightly higher significant wave height for

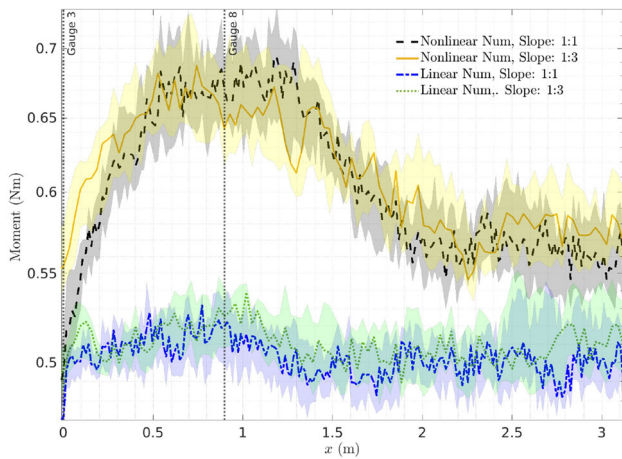


Fig. 7 Overturning moment about the sea-bed predicted by the numerical model. 90% confidence intervals are shown. The moment is the moment corresponding to the probability of 0.1% (one-in-1000 wave) in the moment exceedance figure for different spatial locations. The locations of gauge 3 (At the top of the slope) and gauge 8 (0.9 m after the top of the slope) are indicated by dotted black lines

the flatter case due to less breaking in OW3D. However, the moment behaviour is consistent with the previous work on this setup where very similar physics was found for the two slopes. There appears to be enhanced moment around the top of the step, which increases approximately 20%, consistent with the increased number of large waves observed in both simulation and experiment. The ‘peak’ in this lasts for several wavelengths beyond the top of the slope before decreasing and plateauing. The non-linear simulations consistently predict larger moments than the linear ones. However, the linear simulations do not produce a significant peak and are essentially uniform across the region considered. Thus, we can have confidence that the peak in the moments observed is the result of non-linear physics.

5 Conclusions

This paper has related the theoretical problem of excess rogue waves occurring at the top of slopes to a practical problem in ocean engineering. In doing so, this enables us to draw the following conclusions regarding the wave kinematics of the problem.

We have run a fully non-linear potential-flow model which directly solves for the wave kinematics. This model has been found to be in good agreement with experimental results for surface elevation including for the expected shape of an extreme wave events which to our knowledge has not previously been studied. We then use these kinematics to drive a simple wave loading model. We find enhanced loads for several wavelengths after the abrupt depth transition. This study suggests that extra care is needed when designing

ocean infrastructure at the top of slopes and that the abnormal free surface wave statistics previously observed at the top of slopes also leads to unusual moment or unusual kinematics occurred at the top of the slope.

Acknowledgements TT is funded by EPSRC grant EP/V050079/1. TSvdB acknowledges a Royal Academy of Engineering Research Fellowship. We are grateful to Harry Bingham (DTU) for his help with OceanWave3D. This research was funded in whole or in part by EPSRC EP/V050079/1. For the purpose of Open Access, the author has applied a CC BY public copyright licence to any Author Accepted Manuscript (AAM) version arising from this submission.

Open Access This article is licensed under a Creative Commons Attribution 4.0 International License, which permits use, sharing, adaptation, distribution and reproduction in any medium or format, as long as you give appropriate credit to the original author(s) and the source, provide a link to the Creative Commons licence, and indicate if changes were made. The images or other third party material in this article are included in the article’s Creative Commons licence, unless indicated otherwise in a credit line to the material. If material is not included in the article’s Creative Commons licence and your intended use is not permitted by statutory regulation or exceeds the permitted use, you will need to obtain permission directly from the copyright holder. To view a copy of this licence, visit <http://creativecommons.org/licenses/by/4.0/>.

Appendix A

Governing equations for OW3D

OceanWave3D solves the potential-flow equations. The fluid velocity (u, v, w) can be calculated by the gradient of a scalar velocity potential $\phi(x, y, z, t)$

$$(u, v, w) = (\nabla\phi, \partial_z\phi), \quad (5)$$

in which $\nabla = (\partial_x, \partial_y)$ is the horizontal gradient operator. Based on the equations established by Zakharov (1968), the kinematic and dynamic free surface boundary conditions [given in Eqs. (6) and (7)] can be expressed using the chain rule on the non-linear version of Bernoulli equation and non-linear kinematic boundary condition

$$\partial_t\eta = -\nabla\eta \cdot \nabla\tilde{\phi} + \tilde{w}(1 + \nabla\eta \cdot \nabla\eta), \quad (6)$$

$$\partial_t\tilde{\phi} = -g\eta - \frac{1}{2}(\nabla\tilde{\phi} \cdot \nabla\tilde{\phi} - \tilde{w}^2(1 + \nabla\eta \cdot \nabla\eta)), \quad (7)$$

in which $\tilde{\phi} = \phi(x, y, \eta, t)$ is the velocity potential at the free surface ($z = \eta$), and $\tilde{w} = \partial_z\phi|_{z=\eta}$ is the vertical velocity at the free surface. To obtain the exact value of the vertical velocity in a specific time, the Laplace equation in the fluid volume is required to be solved, together with the kinematic and dynamic boundary conditions.

References

- Adcock TAA, Taylor PH (2014) The physics of anomalous ('rogue') ocean waves. *Rep Prog Phys* 77(10):105901
- Barratt D, Bingham HB, Adcock TAA (2020) Nonlinear evolution of a steep, focusing wave group in deep water simulated with Ocean-Wave3D. *J Offshore Mech Arct Eng* 142(2):021201
- Bateman WJ, Swan C, Taylor PH (2003) On the calculation of the water particle kinematics arising in a directionally spread wavefield. *J Comput Phys* 186(1):70–92
- Bingham HB, Zhang H (2007) On the accuracy of finite-difference solutions for nonlinear water waves. *J Eng Math* 58(1):211–228
- Boccotti P (1983) Some new results on statistical properties of wind waves. *Appl Ocean Res* 5(3):134–140
- Bolles CT, Speer K, Moore MNJ (2019) Anomalous wave statistics induced by abrupt depth change. *Phys Rev Fluids* 4(1):011801
- Draycott S, Li Y, Stansby PK, Adcock TAA, van den Bremer TS (2022) Harmonic-induced wave breaking due to abrupt depth transitions: an experimental and numerical study. *Coast Eng* 171:104041
- Ducrozet G, Gouin M (2017) Influence of varying bathymetry in rogue wave occurrence within unidirectional and directional sea-states. *J Ocean Eng Sci* 3(4):309–324
- Dysthe K, Krogstad HE, Müller P (2008) Oceanic rogue waves. *Annu Rev Fluid Mech* 40:287–310
- Eelink D, Branger H, Luneau C, He Y, Chabchoub A, Kasparian J, van den Bremer TS, Sapsis TP (2022) Nonlinear wave evolution with data-driven breaking. *Nat Commun* 13:1–11
- Engsig-Karup AP, Bingham HB, Lindberg O (2009) An efficient flexible-order model for 3D nonlinear water waves. *J Comput Phys* 228(6):2100–2118
- Gramstad O, Zeng H, Trulsen K, Pedersen GK (2013) Freak waves in weakly nonlinear unidirectional wave trains over a sloping bottom in shallow water. *Phys Fluids* 25(12):122103
- Hasselmann K, Barnett TP, Bouws E, Carlson H, Cartwright DE, Enke K, Ewing J, Gienapp A, Hasselmann D, Kruseman P et al (1973) Measurements of wind-wave growth and swell decay during the joint north sea wave project (jonswap). *Ergänzungsheft zur Deutschen Hydrographischen Zeitschrift, Reihe A*
- Klahn M, Madsen PA, Fuhrman DR (2021) On the statistical properties of inertia and drag forces in nonlinear multi-directional irregular water waves. *J Fluid Mech* 916:A59
- Lawrence C, Gramstad O, Trulsen K (2021a) Variational boussinesq model for kinematics calculation of surface gravity waves over bathymetry. *Wave Motion* 100:102665
- Lawrence C, Trulsen K, Gramstad O (2021b) Statistical properties of wave kinematics in long-crested irregular waves propagating over non-uniform bathymetry. *Phys Fluids* 33(4):046601
- Li Y, Draycott S, Adcock TAA, van den Bremer TS (2021a) Surface wavepackets subject to an abrupt depth change. Part 2. Experimental analysis. *J Fluid Mech* 915:A72
- Li Y, Draycott S, Zheng Y, Lin Z, Adcock TAA, Van Den Bremer TS (2021b) Why rogue waves occur atop abrupt depth transitions. *J Fluid Mech* 919:R5
- Li Y, Zheng Y, Lin Z, Adcock TAA, van den Bremer TS (2021c) Surface wavepackets subject to an abrupt depth change. Part 1. Second-order theory. *J Fluid Mech* 915:A71
- Li Z, Tang T, Draycott S, Li Y, van den Bremer T, Adcock T (2022) On Rogue waves generated by abrupt depth transitions. In: 41st international conference on ocean, offshore & arctic engineering, OMAE2022. The American Society of Mechanical Engineers (ASME), Hamburg, Germany
- Lindgren G (1970) Some properties of a normal process near a local maximum. *Ann Math Stat* 41(6):1870–1883
- Massel SR (1983) Harmonic generation by waves propagating over a submerged step. *Coast Eng* 7(4):357–380
- Mendes S, Scotti A, Brunetti M, Kasparian J (2022) Non-homogeneous analysis of rogue wave probability evolution over a shoal. *J Fluid Mech* 939:A25
- Monsalve Gutiérrez E (2017) Experimental study of water waves: nonlinear effects and absorption. PhD thesis, Université Pierre & Marie Curie-Paris 6
- Monsalve E, Maurel A, Pagneux V, Petitjeans P (2022) Nonlinear waves passing over rectangular obstacles: multimodal method and experimental validation. *Fluids* 7(5):145
- Morison JR, Johnson JW, Schaaf SA (1950) The force exerted by surface waves on piles. *J Petrol Technol* 2(05):149–154
- Tang T, Xu W, Barratt D, Bingham HB, Li Y, Taylor PH, Van Den Bremer TS, Adcock TAA (2021) Spatial evolution of the kurtosis of steep unidirectional random waves. *J Fluid Mech* 908:A3
- Tromans PS, Anaturk AR, Hagemeyer P (1991) A new model for the kinematics of large ocean waves-application as a design wave. In: The first international offshore and polar engineering conference, International Society of Offshore and Polar Engineers, Edinburgh, UK
- Trulsen K, Zeng H, Gramstad O (2012) Laboratory evidence of freak waves provoked by non-uniform bathymetry. *Phys Fluids* 24(9):097101
- Trulsen K, Raustøl A, Jorde S, Rye LB (2020) Extreme wave statistics of long-crested irregular waves over a shoal. *J Fluid Mech* 882:R2
- Viotti C, Dias F (2014) Extreme waves induced by strong depth transitions: fully nonlinear results. *Phys Fluids* 26(5):051705
- Zakharov VE (1968) Stability of periodic waves of finite amplitude on the surface of a deep fluid. *J Appl Mech Tech Phys* 9(2):190–194
- Zeng H, Trulsen K (2012) Evolution of skewness and kurtosis of weakly nonlinear unidirectional waves over a sloping bottom. *Nat Hazard* 12(3):631–638
- Zhang J, Benoit M, Kimmoun O, Chabchoub A, Hsu HC (2019) Statistics of extreme waves in coastal waters: large scale experiments and advanced numerical simulations. *Fluids* 4(2):99
- Zheng YK, Lin ZL, Li Y, Adcock TAA, Li Y, van den Bremer TS (2020) Fully nonlinear simulations of extreme waves provoked by strong depth transitions: the effect of slope. *Phys Rev Fluids* 5:064804

Publisher's Note Springer Nature remains neutral with regard to jurisdictional claims in published maps and institutional affiliations.