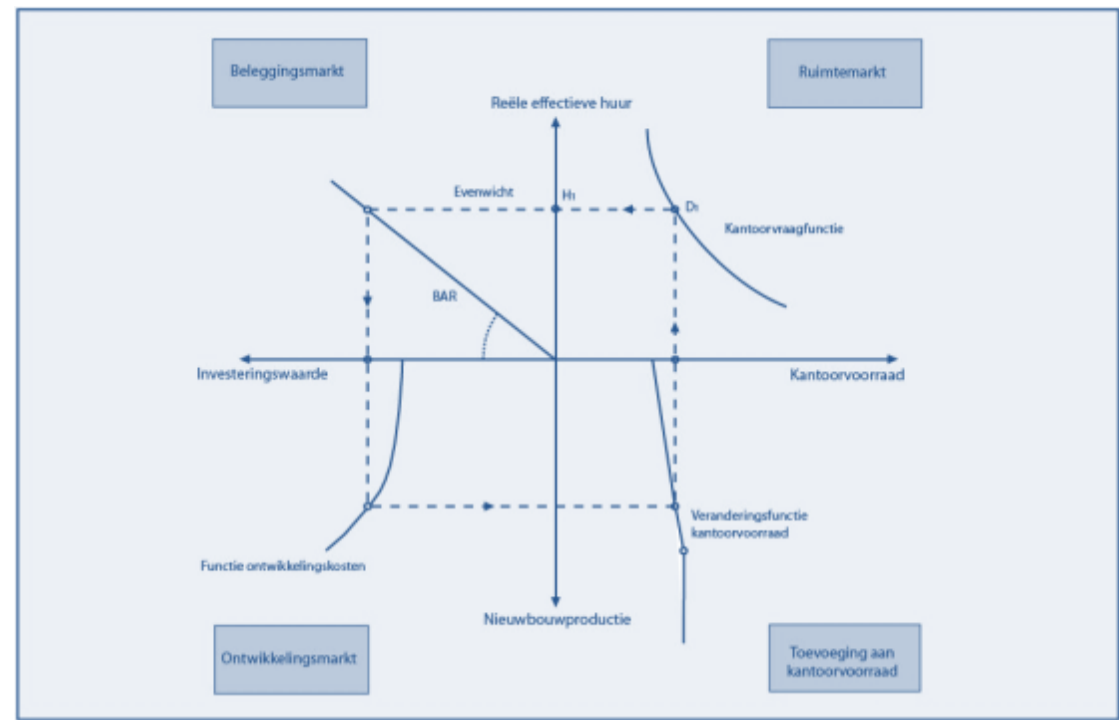
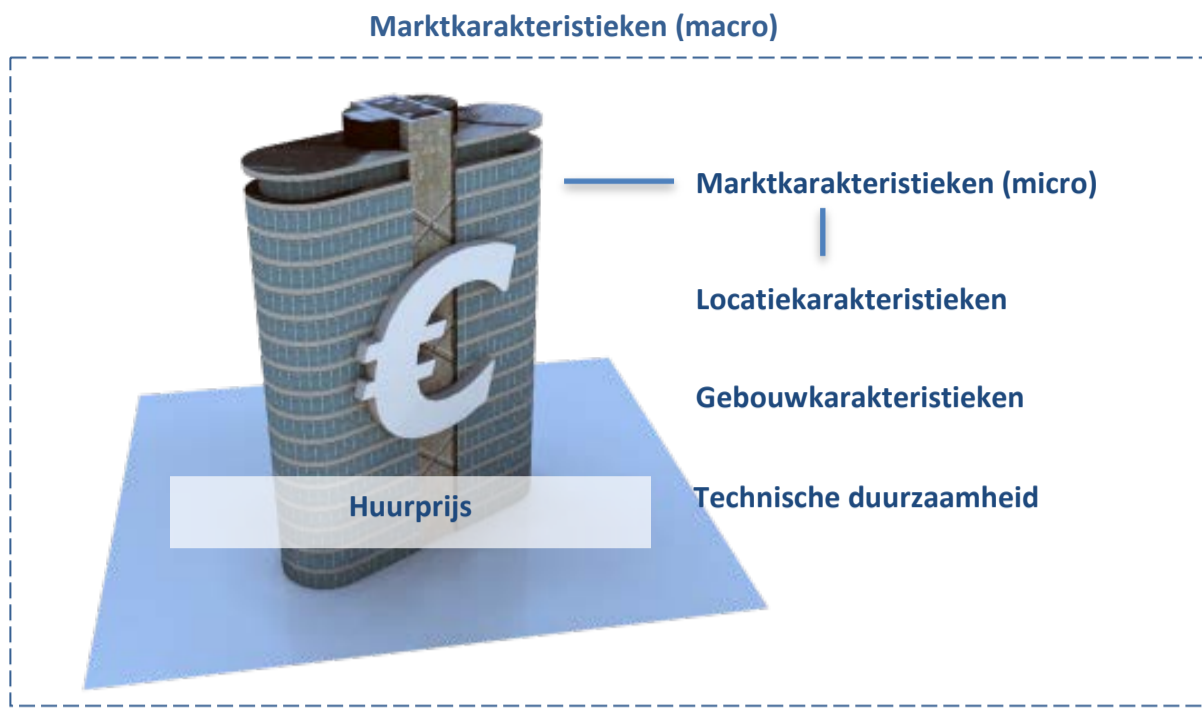


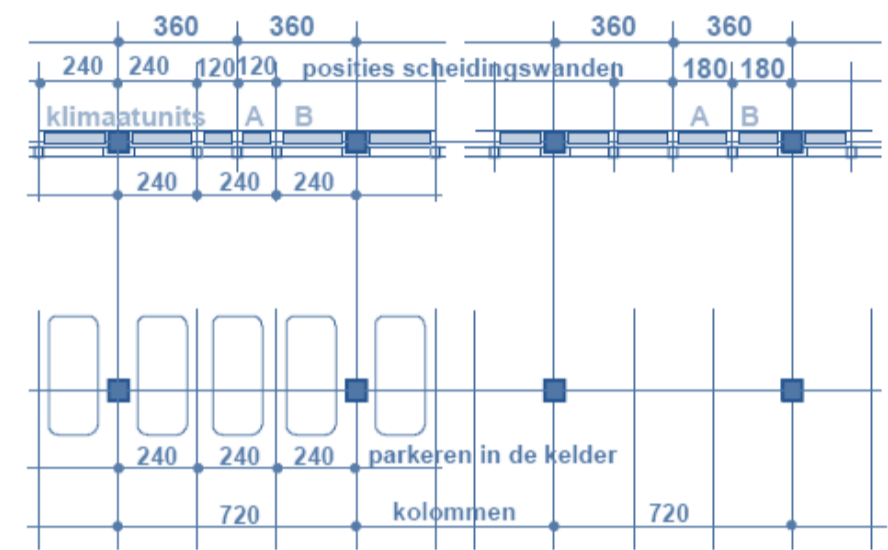
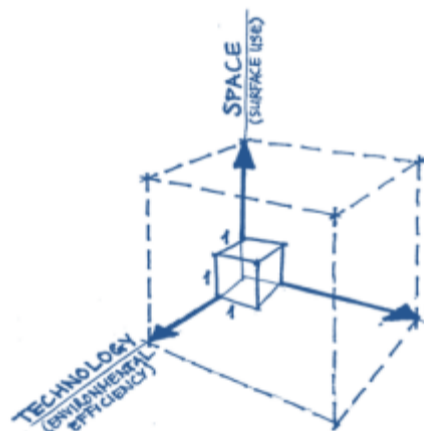
Het effect van technische duurzaamheid op de huurprijs van kantoorgebouwen



Huurprijsontwikkeling



Energetische kwaliteit



Flexibiliteit



Gevelkwaliteit

Technische duurzaamheid

$$\text{€huur} = \beta_0 + \sum \beta_{\text{markt}} (\text{niv. 1; tijd}) + \sum \beta_{\text{locatie}} (\text{niv 2; stad}) + \sum \beta_{\text{locatie}} (\text{niv 3; postcode}) + \sum \beta_{\text{gebouw}} (\text{niv. 4}) + \sum \beta_{\text{duurzaamheidsaspecten}} (\text{niv. 4}) + E$$

“Willingness-to-pay”

Parameter	Estimate	Std. Error	df	t	Sig.	95% Confidence Interval	
						Lower Bound	Upper Bound
Intercept	5.210138	.220109	232.232	23.671	.000	4.776472	5.643804
[DRegio=1]	.267193	.075608	50.821	3.534	.001	.115390	.418996
[DRegio=2]	.114286	.092456	57.920	1.236	.221	-.070790	.299363
[DRegio=3]	.163738	.093140	52.157	1.758	.085	-.023148	.350623
[DRegio=4]	0 ^b	0					
[ConstrPeriod=1.00]	.110572	.065116	323.599	1.698	.090	-.017531	.238676
[ConstrPeriod=2.00]	-.148255	.049531	310.952	-2.993	.003	-.245712	-.050797
[ConstrPeriod=3.00]	-.121573	.046540	310.252	-2.612	.009	-.213147	-.030000
[ConstrPeriod=4.00]	-.033659	.039419	313.263	-.854	.394	-.111218	.043900
[ConstrPeriod=5.00]	0 ^b	0					
[DSnelweg2=.00]	-.043117	.030084	316.913	-1.433	.153	-.102305	.016072
[DSnelweg2=1.00]	0 ^b	0					
LNafstStation	-.051109	.020762	243.832	-2.462	.015	-.092004	-.010213
GoogleWalk	.004229	.001386	245.510	3.051	.003	.001499	.006959
LnLeeftijdRenovatiejaar	-.017701	.012930	318.957	-1.369	.172	-.043141	.007738
[DProfitNonProfit=1.00]	-.064399	.025662	289.566	-2.510	.013	-.114907	-.013892
[DProfitNonProfit=2.00]	0 ^b	0					
[DGevelgrid=1.00]	-.030344	.025463	302.636	-1.192	.234	-.080451	.019764
[DGevelgrid=2.00]	0 ^b	0					
EMgevel_Object	-.079452	.023679	320.074	-3.355	.001	-.126038	-.032867
\LnEnergieIndex	-.101259	.051245	319.398	-1.976	.049	-.202079	-.000438
LNVerdiepingen	.068882	.021048	303.261	3.273	.001	.027463	.110300

a. Dependent Variable: LN transformatie RHuurM2.
b. This parameter is set to zero because it is redundant.

