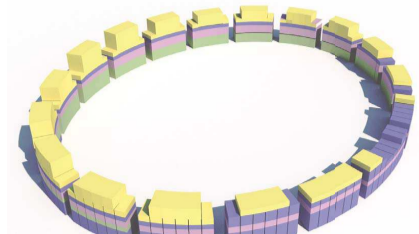
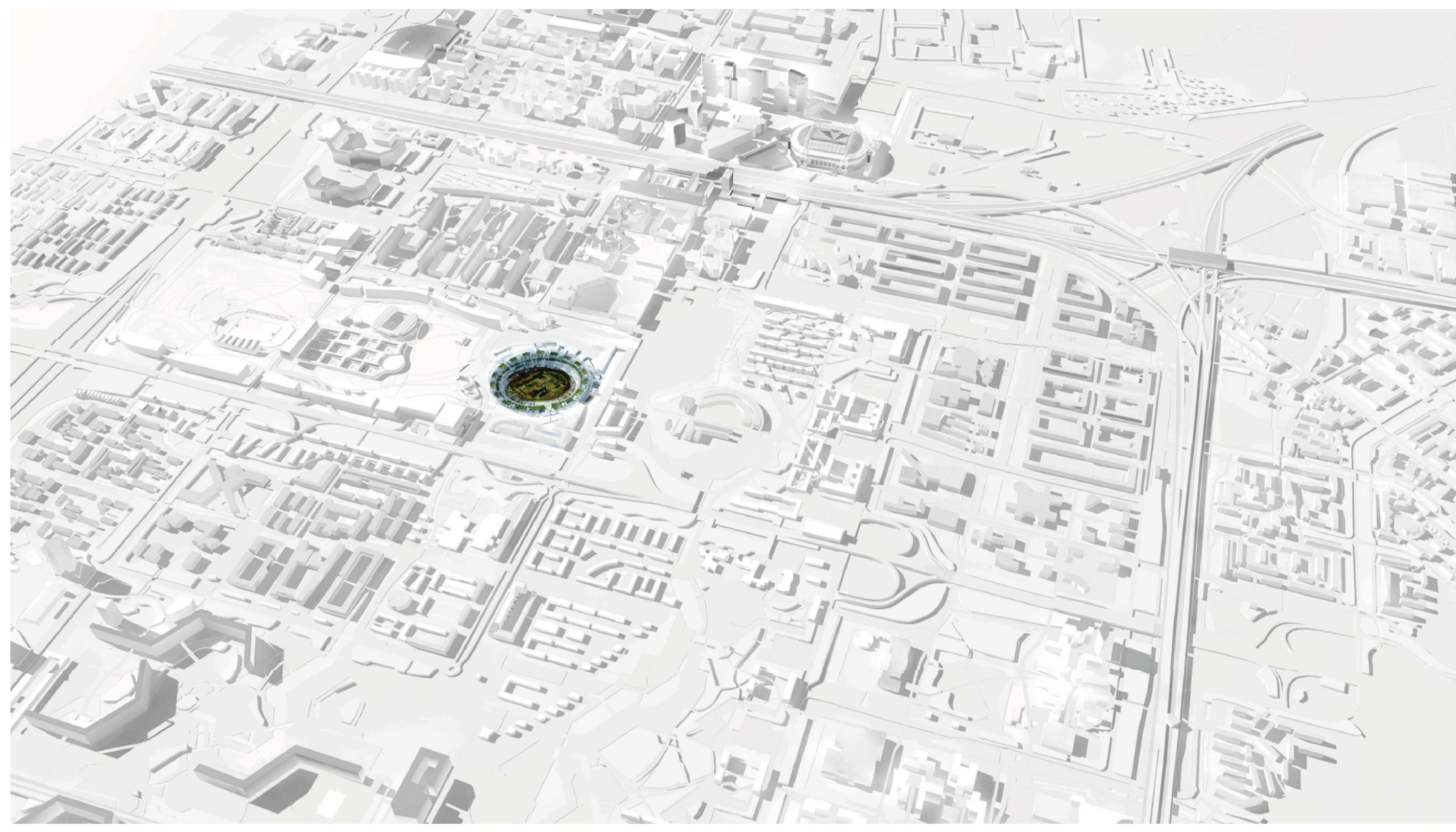


# Imagine living in a post-Olympic stadium

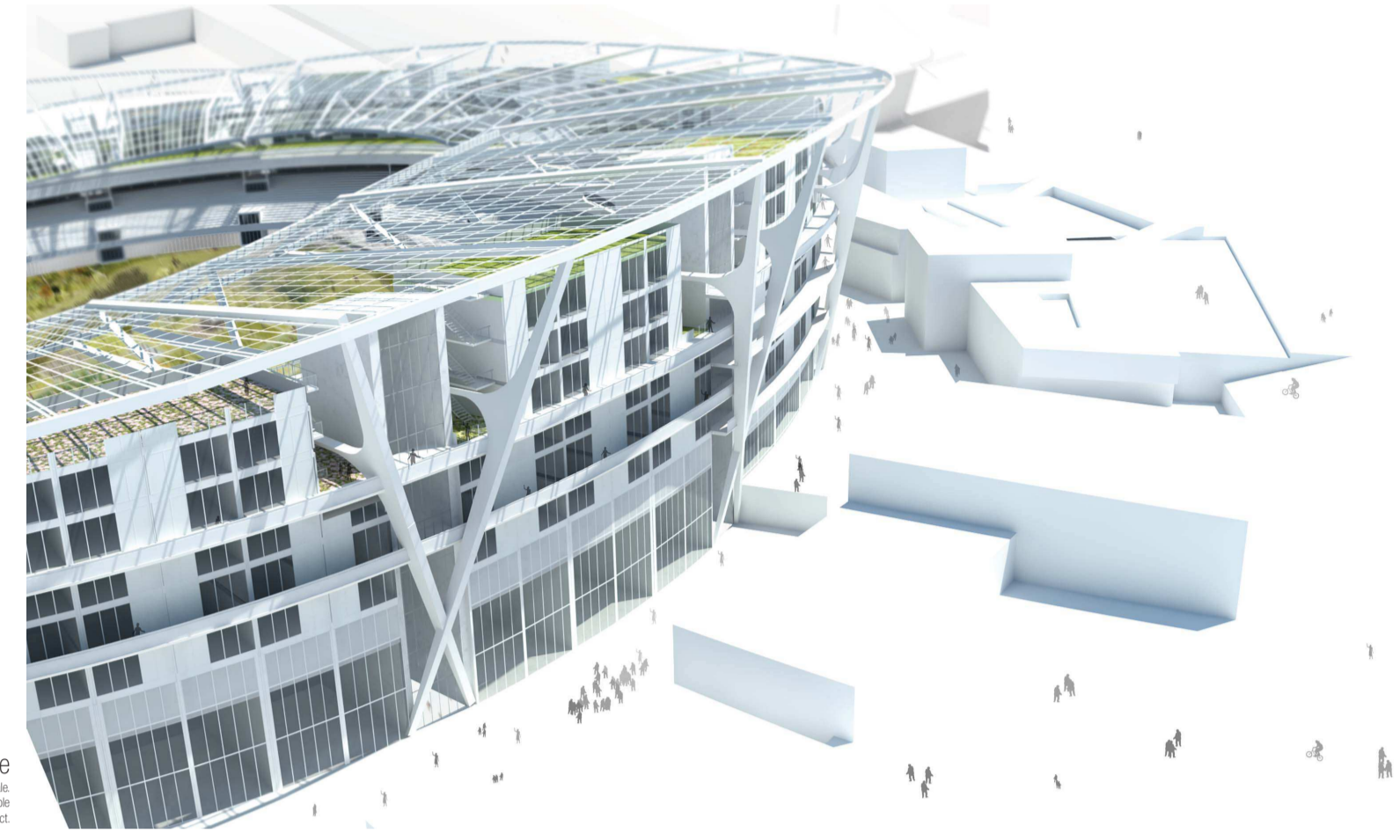
You may say I'm a dreamer  
But I'm not the only one  
I hope some day you'll join me  
And the world will live as one  
Imagine, John Lennon (1973)

**BOLMER**

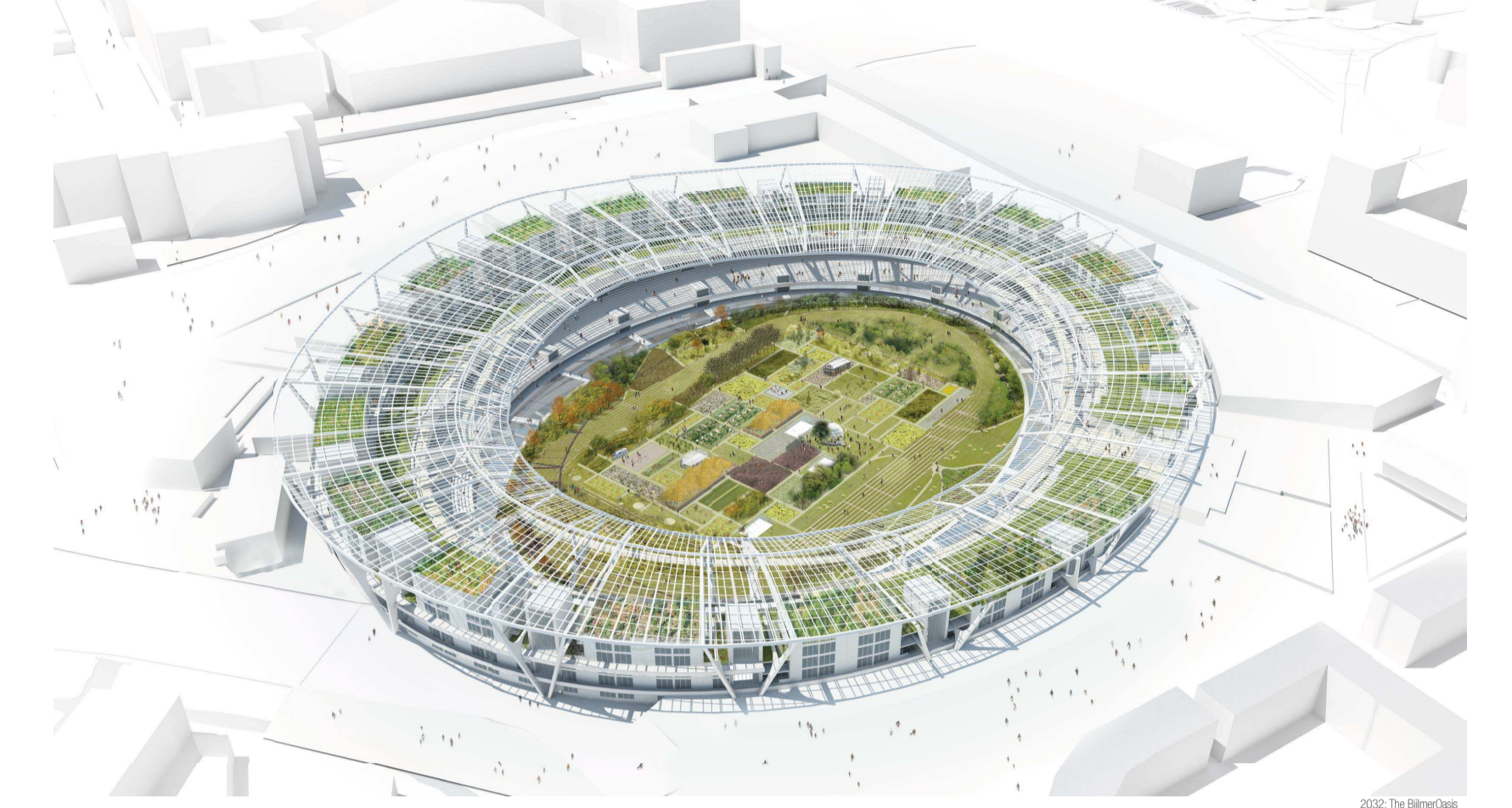


**spatial organization of functions**  
The organization of the stadium program is based on 6 functional zones, which are arranged in a ring around the stadium, forming a ring and supporting the reconstruction.

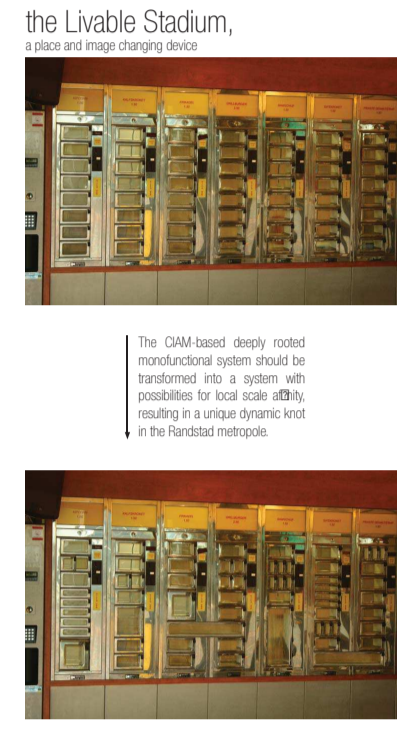
**pragmatic embedment**



**facade**  
The facade is composed of three main parts: the stadium, the residential tower, and the office tower. The facade is designed to be a mix of materials and colors, creating a dynamic and modern appearance.

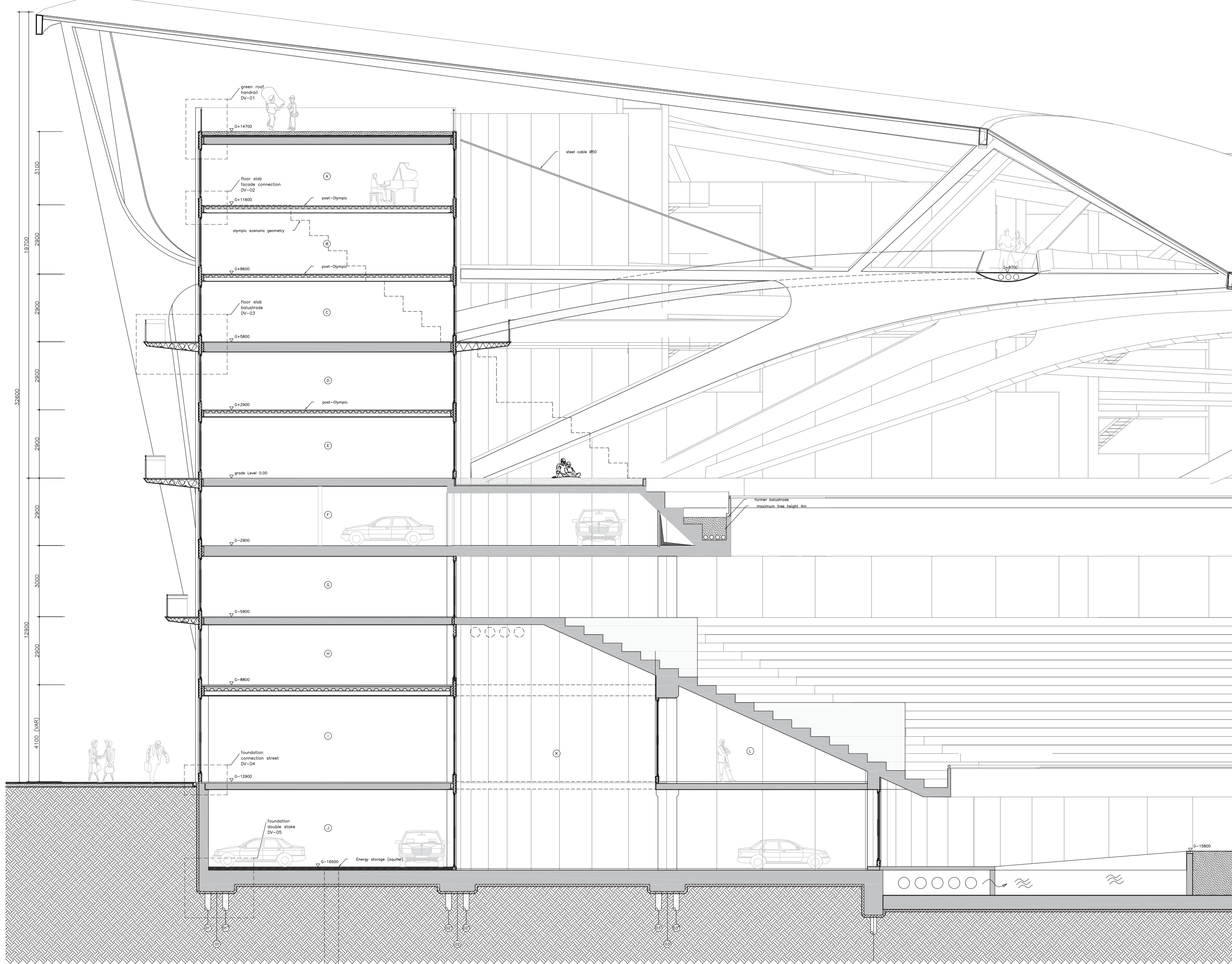


**transformation**  
**architecture as a catalyst**  
The stadium is not just a sports arena, but a catalyst for urban transformation. It is designed to be a mix of materials and colors, creating a dynamic and modern appearance.



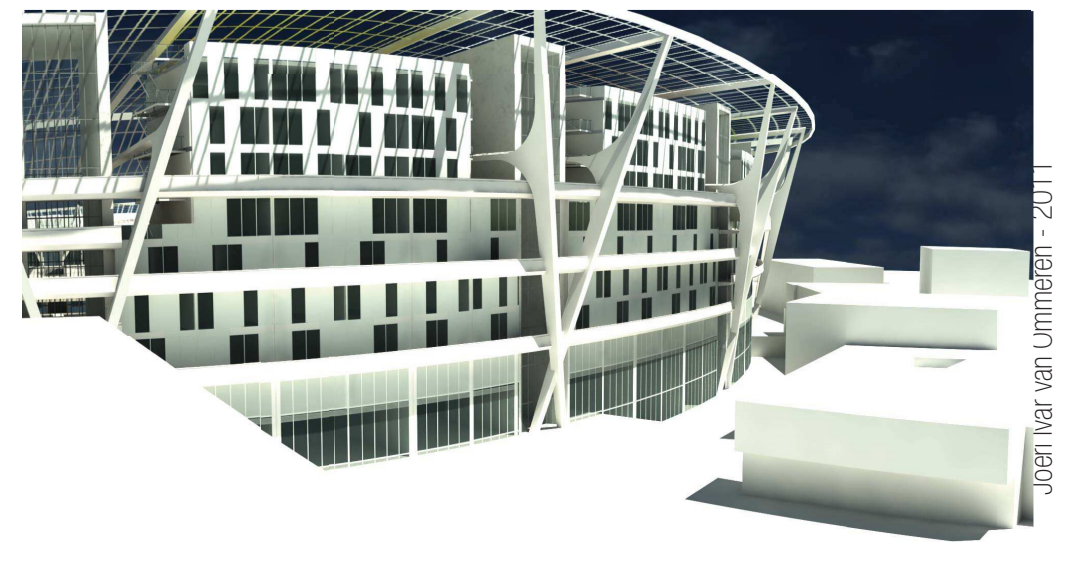
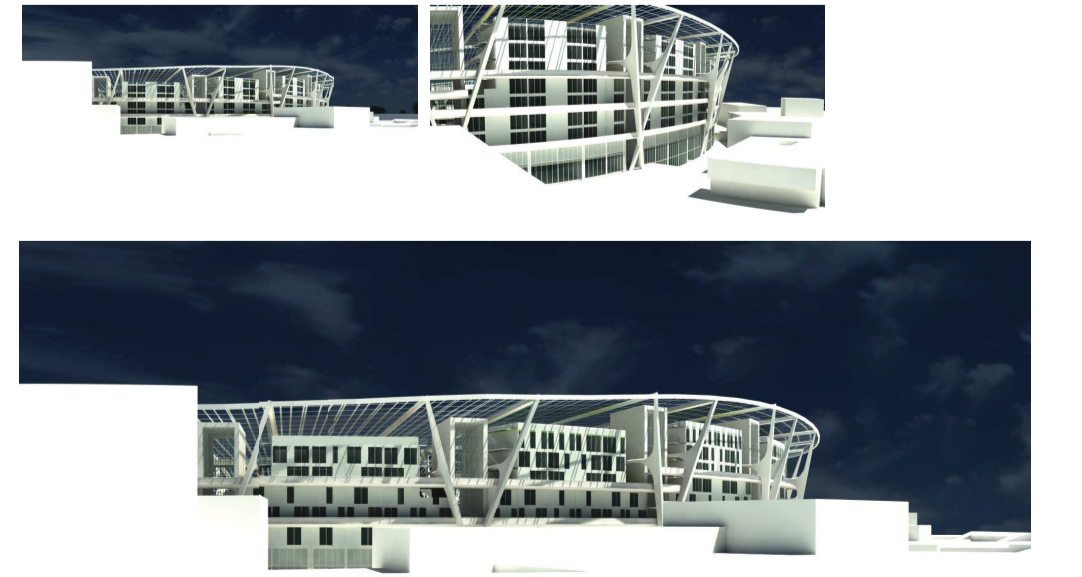
## homo ludens post Olympum

Kom jij ook post-Olympisch spelen in Zuid-Oost?



**identity**

The stadium is not just a sports arena, but a catalyst for urban transformation. It is designed to be a mix of materials and colors, creating a dynamic and modern appearance.



Legend:  
R: residential (apartment, duplex)  
O: office, small business  
S: sports (stadium, arena)  
C: commercial (shops, services)  
L: local (shops, restaurants, storage)  
Liveable Stadium - Section AA'  
SCALE 1:50 0m 1m 2m 3m