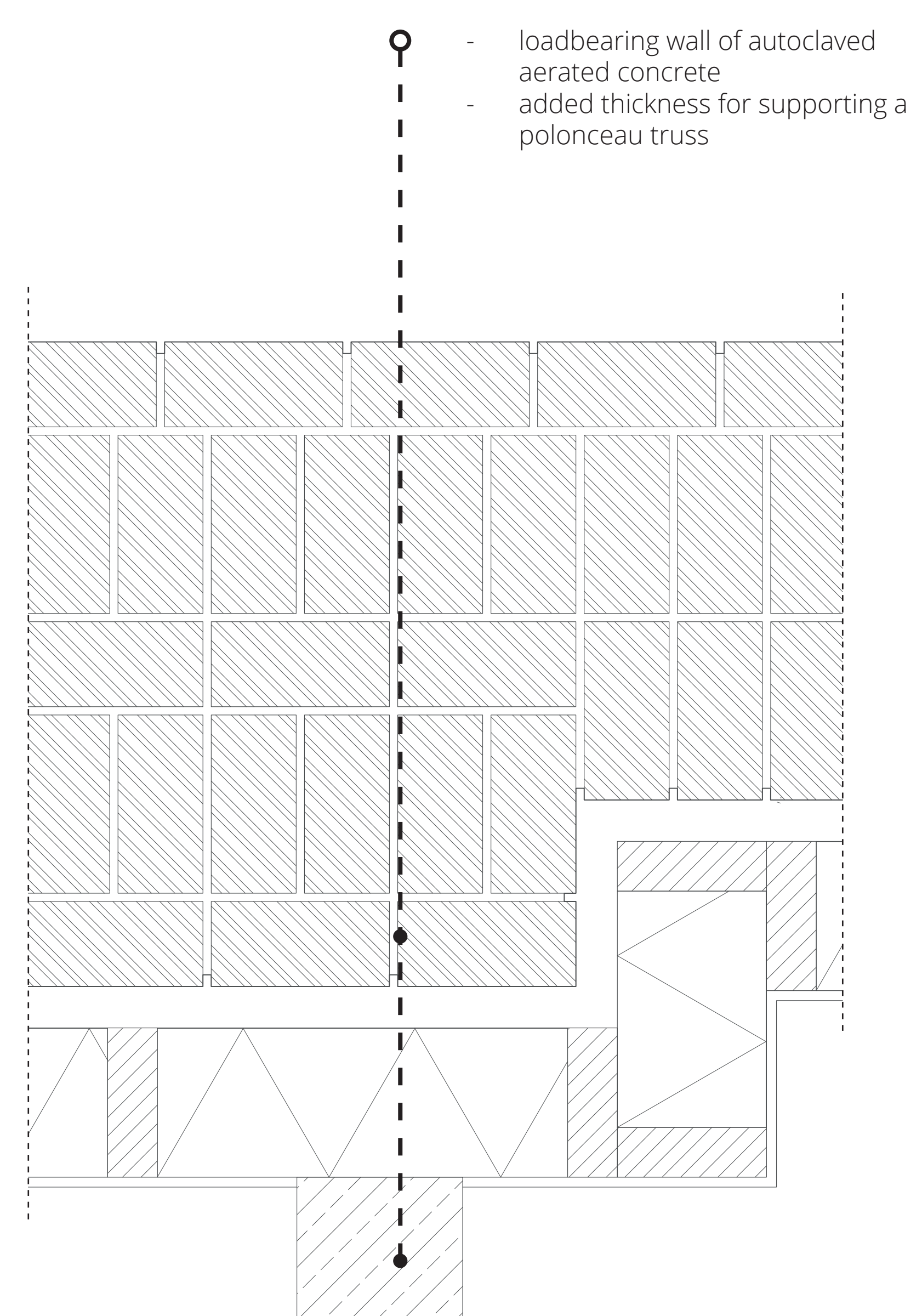
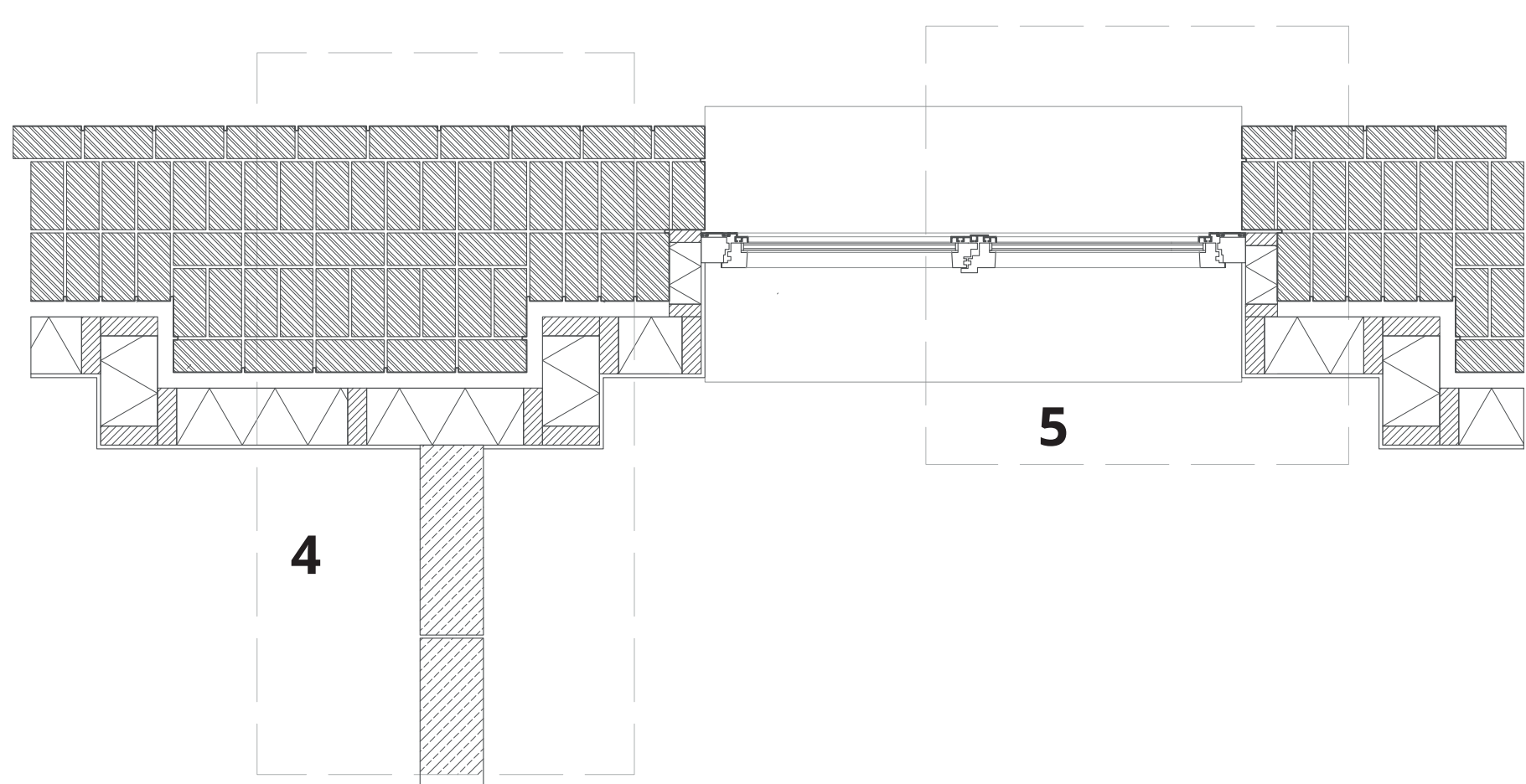
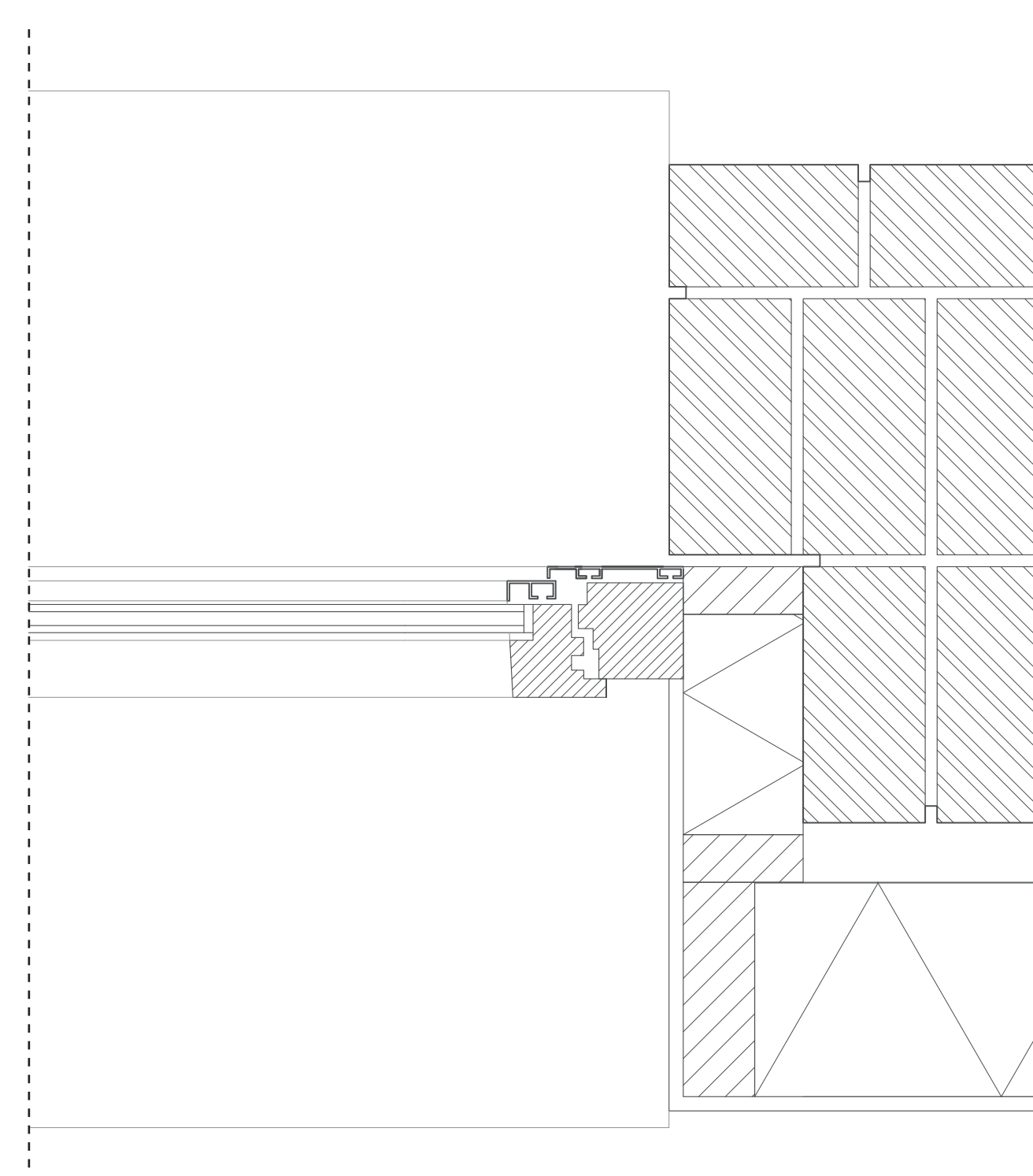


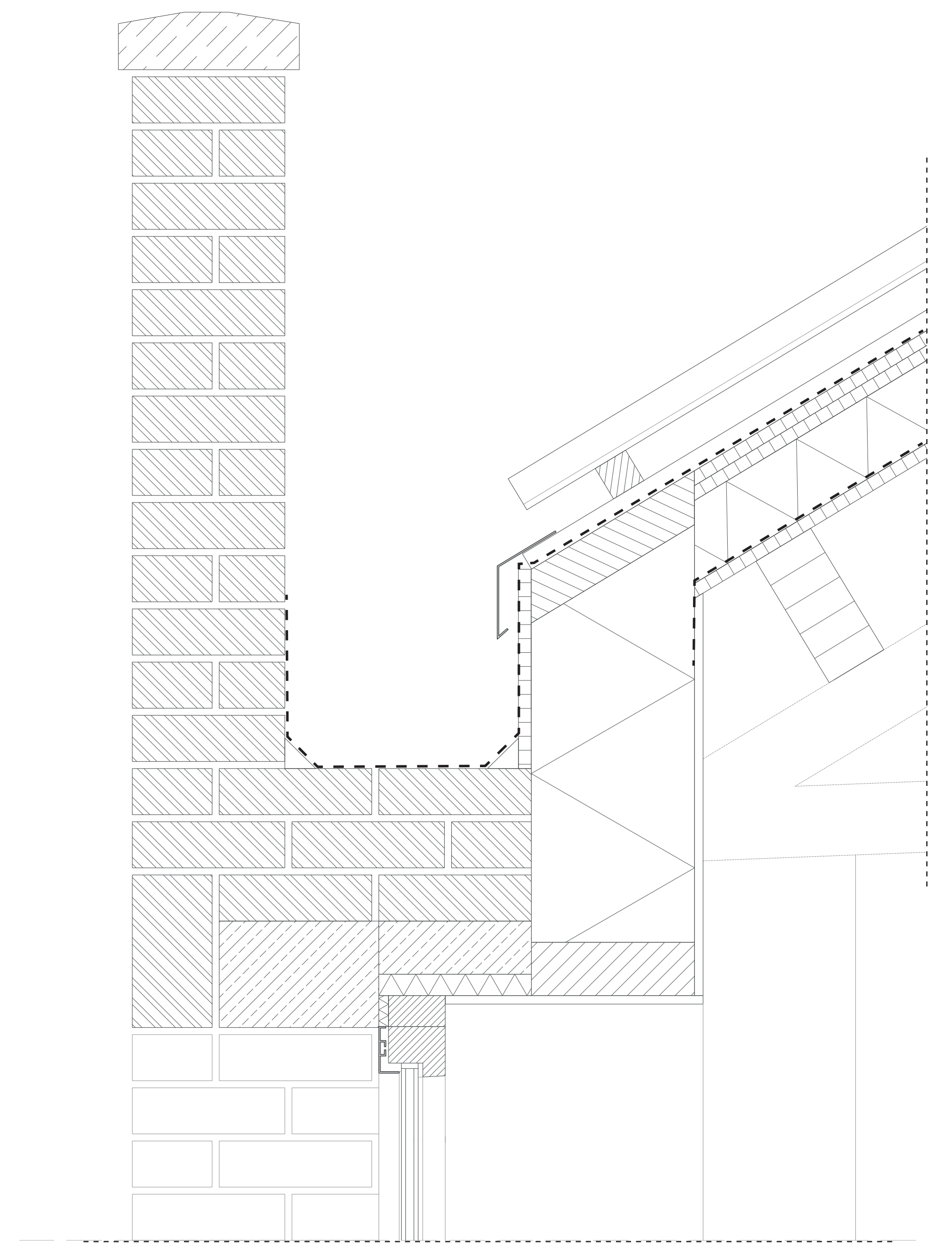
Section + elevation | Offices 1:20



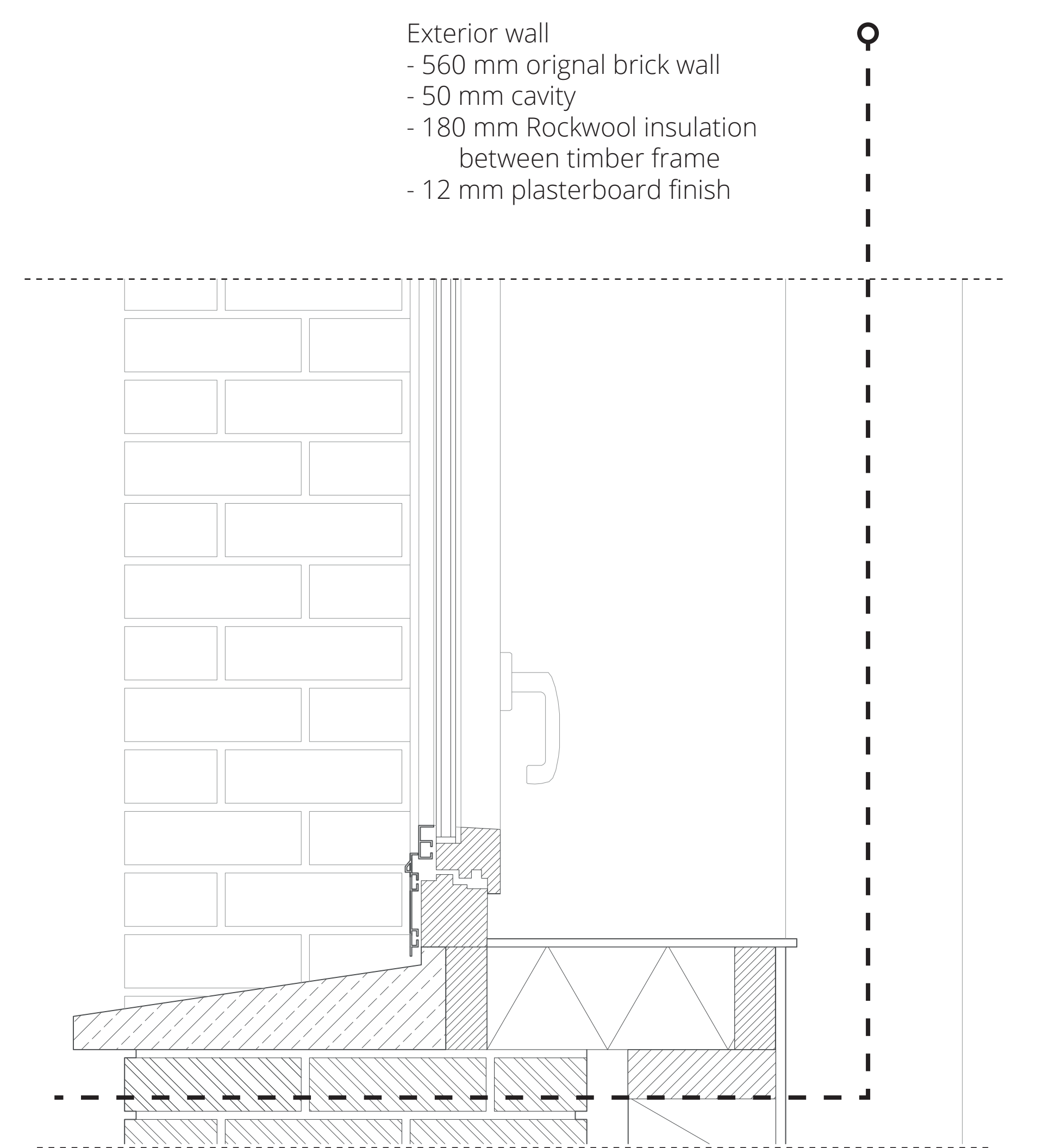
4 | Horizontal detail exterior wall 1 : 5



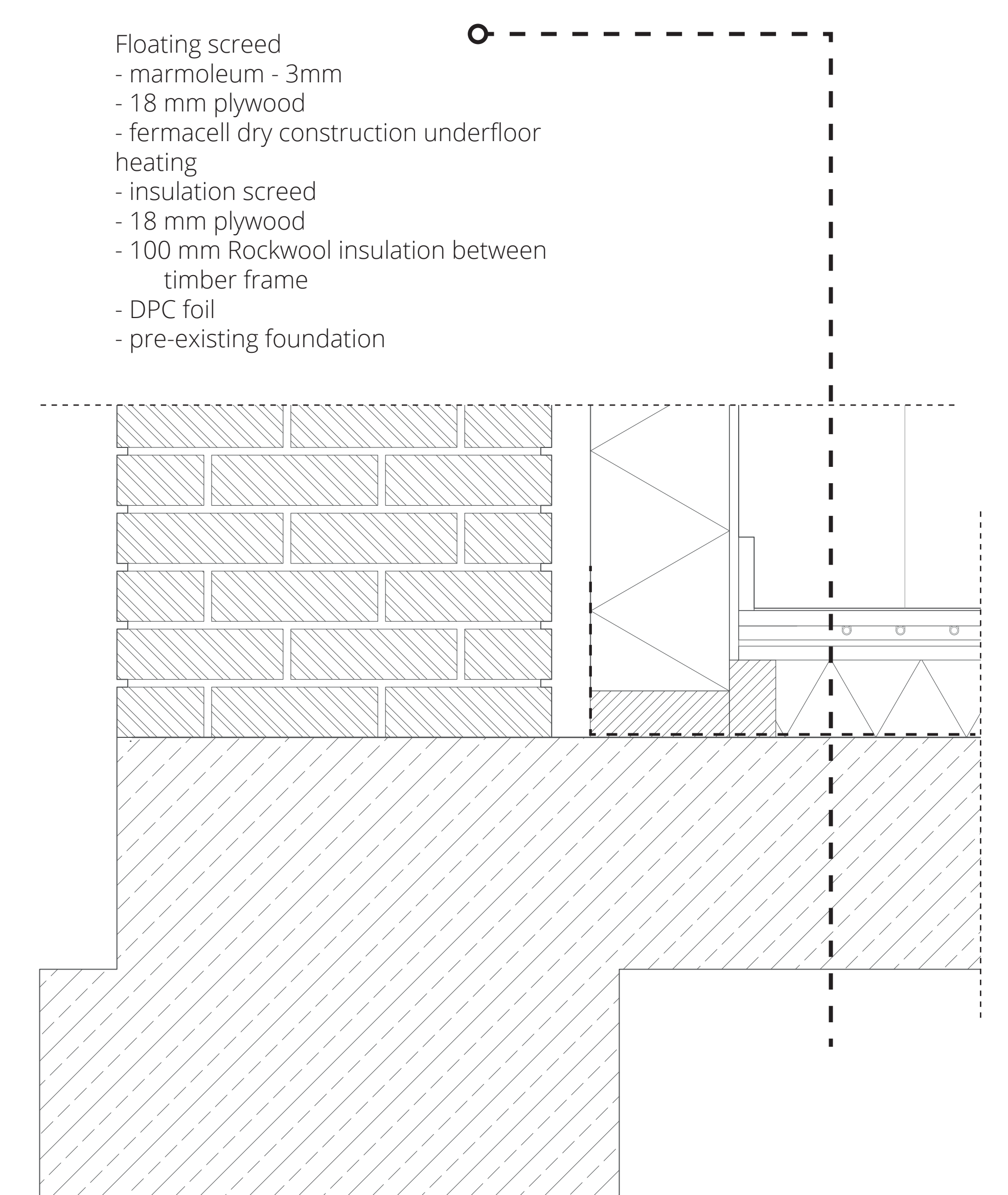
5 | Horizontal detail window connection 1 : 5



1 | Roof - wall joint detail 1:5



2 | sill detail 1:5



3 | Foundation detail 1 : 5

- Exterior wall
- 560 mm original brick wall
- 50 mm cavity
- 180 mm Rockwool insulation between timber frame
- 12 mm plasterboard finish

- Floating screed
- marmoleum - 3mm
- 18 mm plywood
- fermacell dry construction underfloor heating
- insulation screed
- 18 mm plywood
- 100 mm Rockwool insulation between timber frame
- DPC foil
- pre-existing foundation

- Q - loadbearing wall of autoclaved aerated concrete
- added thickness for supporting a polonceau truss



Central hall



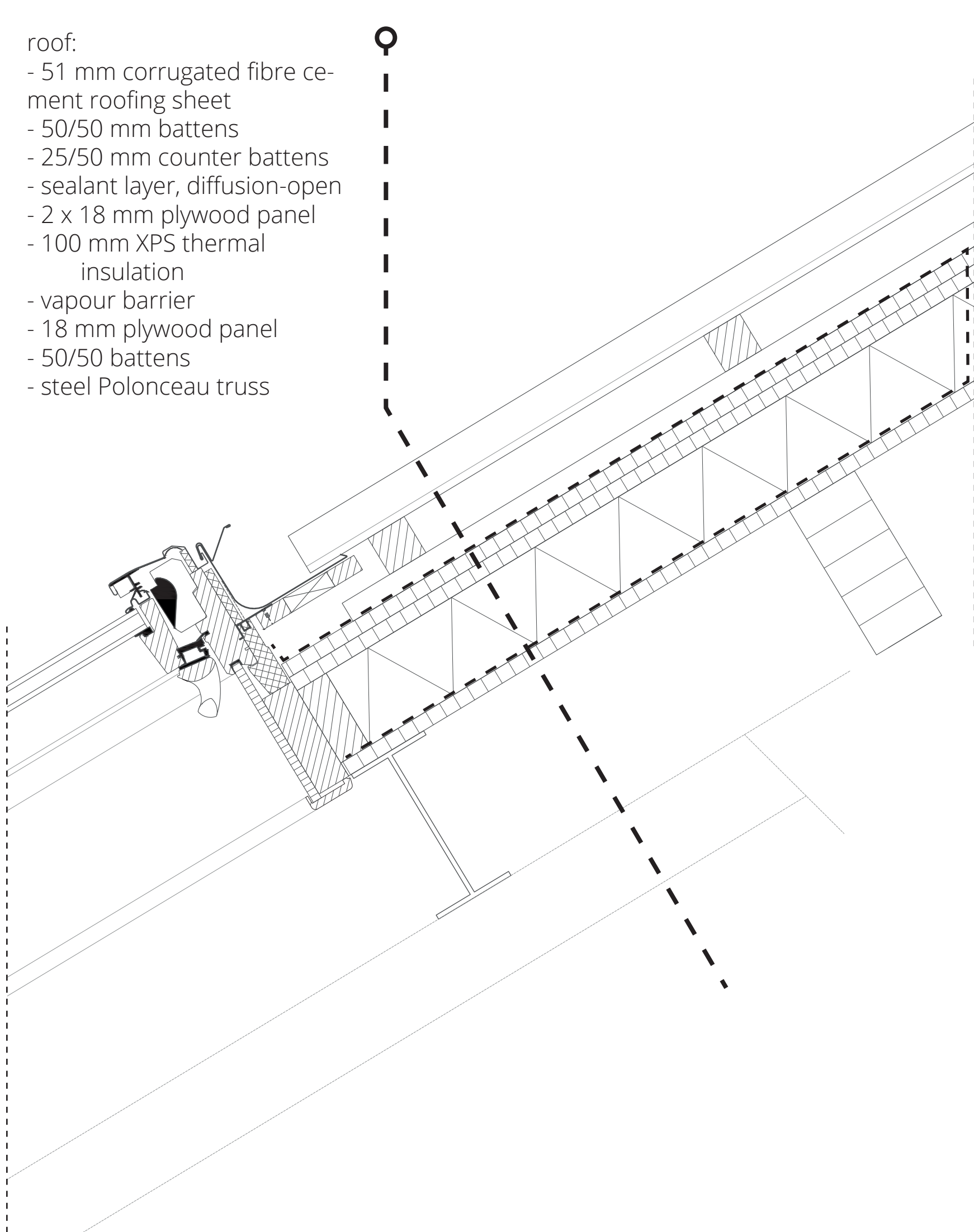
above: gallery connecting different studios
below: threshold between hall and studios



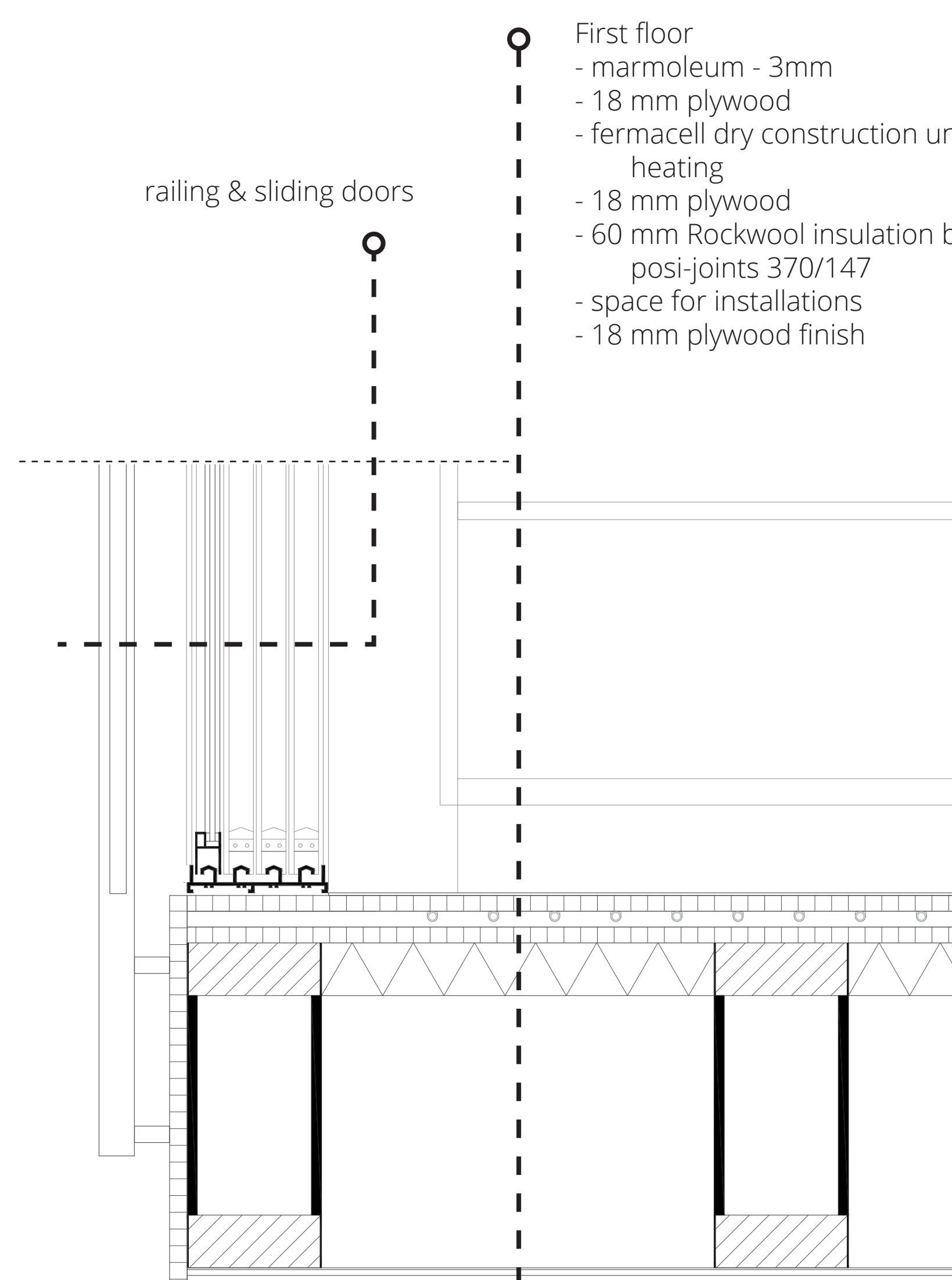
Making visible - exhibition space and follies as a front for the area



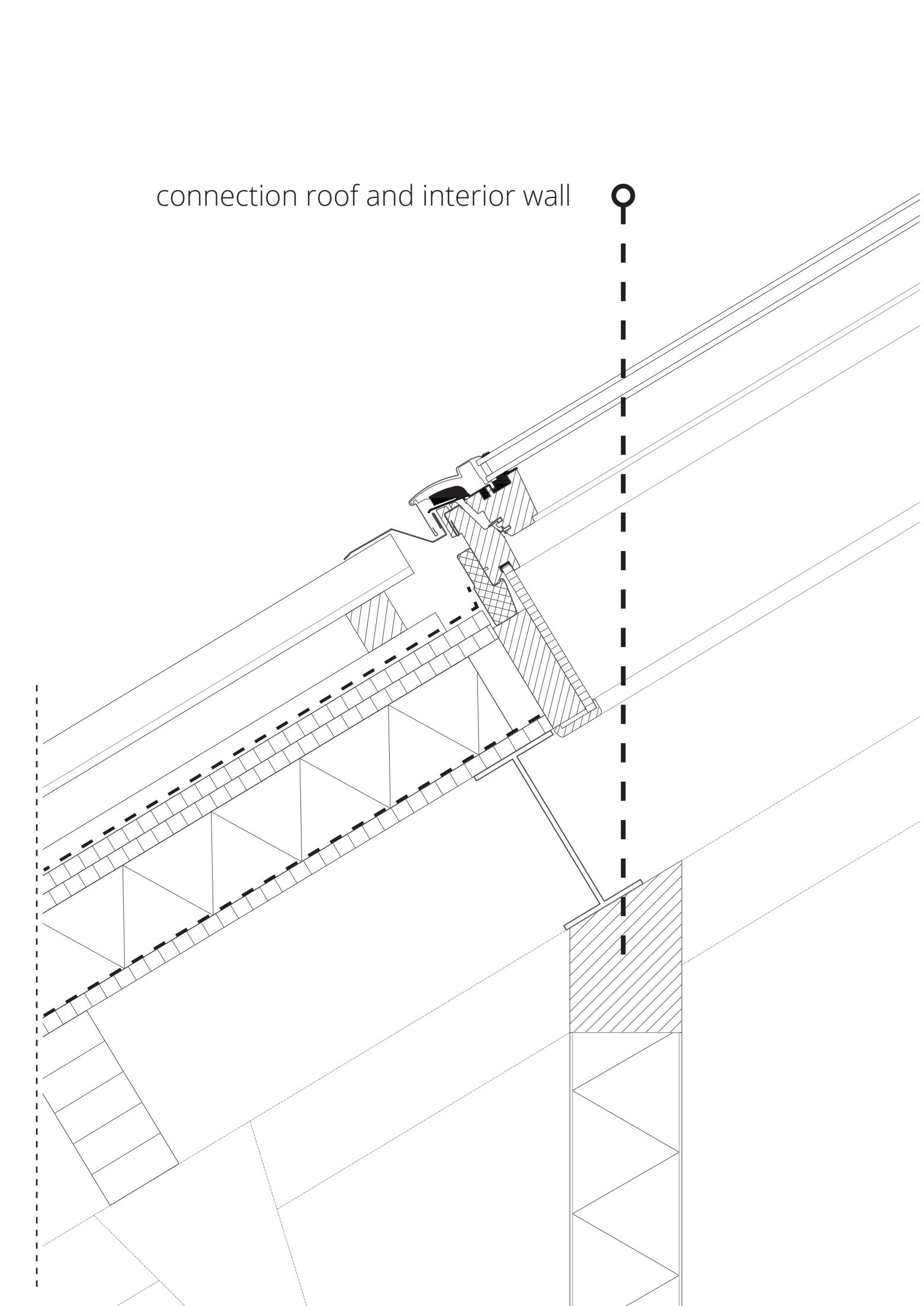
Above: connection to Bohemia place
below: Entrance to the hall



6 | Roof - skylight upper connection detail 1:5



7 | Interior wall first floor detail 1:5

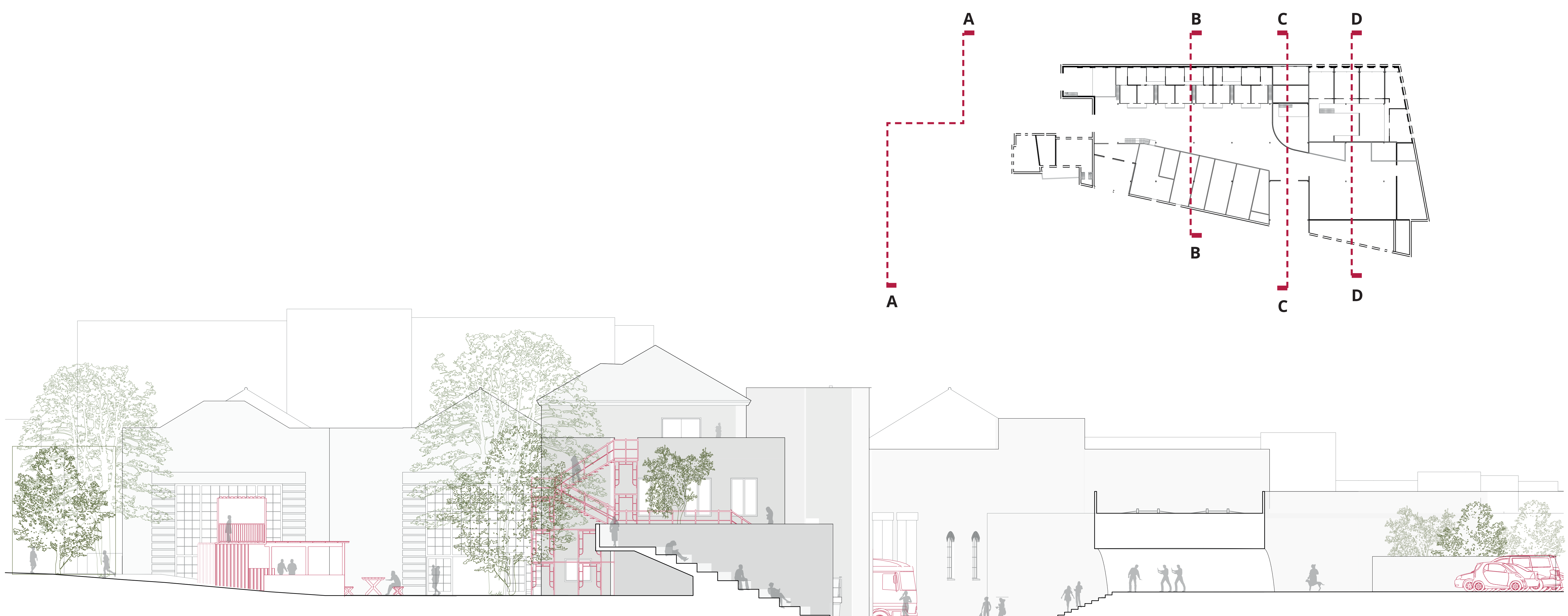


8 | Roof - skylight lower connection detail 1:5

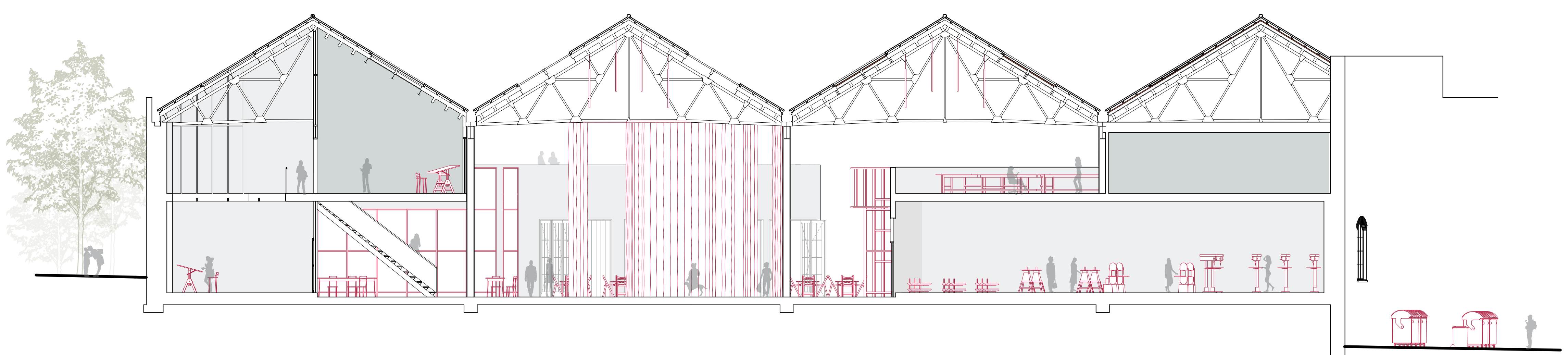
- roof:
- 51 mm corrugated fibre cement roofing sheet
- 50/50 mm battens
- 25/50 mm counter battens
- sealant layer, diffusion-open
- 2 x 18 mm plywood panel
- 100 mm XPS thermal insulation
- vapour barrier
- 18 mm plywood panel
- 50/50 mm battens
- steel Polonceau truss

- First floor
- marmoleum - 3mm
- 18 mm plywood
- fermacell dry construction underfloor heating
- 18 mm plywood
- 60 mm Rockwool insulation between posi-joints 370/147
- space for installations
- 18 mm plywood finish

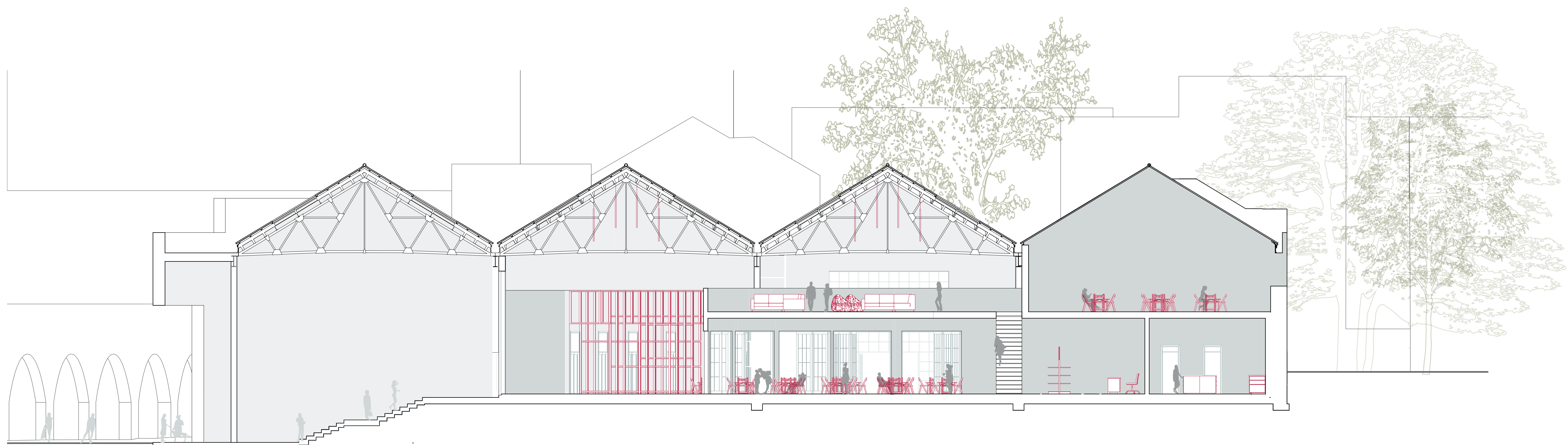
- connection roof and interior wall



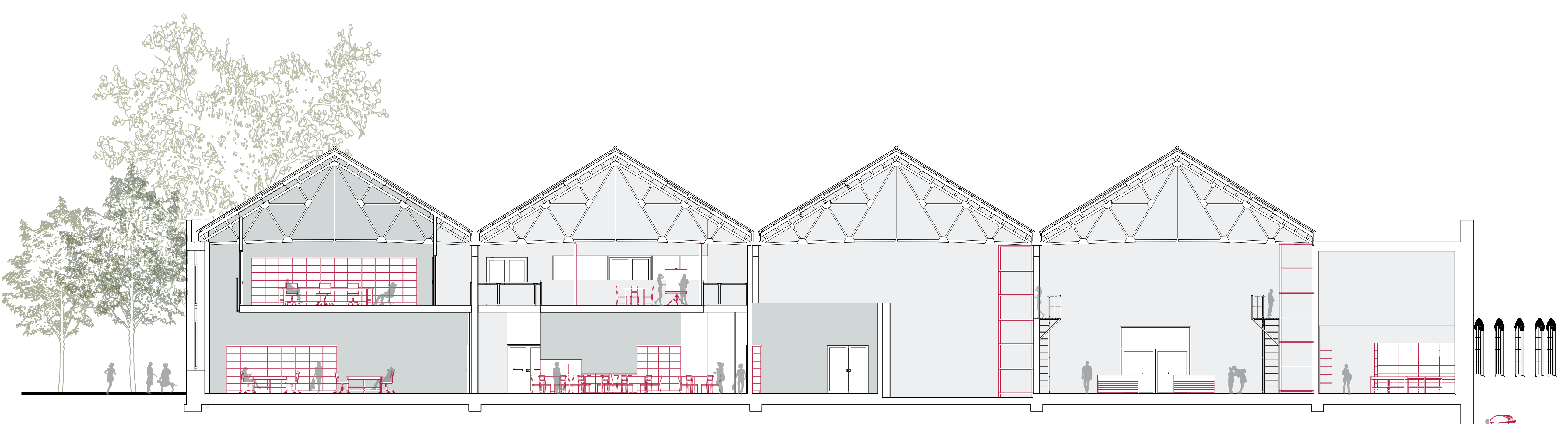
Elevation - West facade : Build up Hackney | café/ exhibition space
AA | 1:200



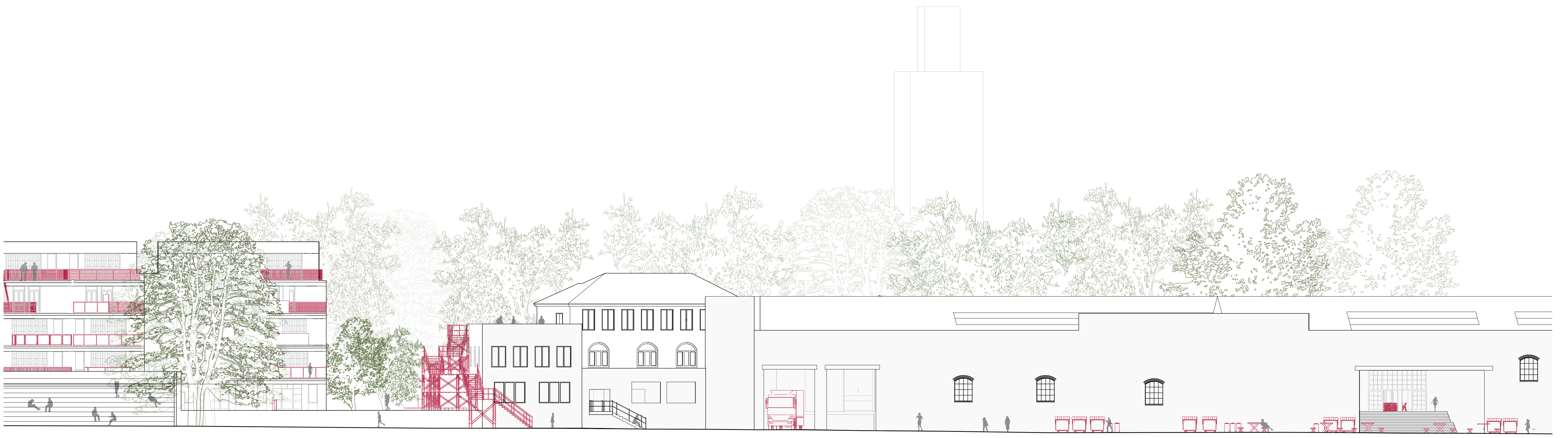
Section - Makerspace : Studios | storage | Public hall | Woodworking shop
BB | 1:200



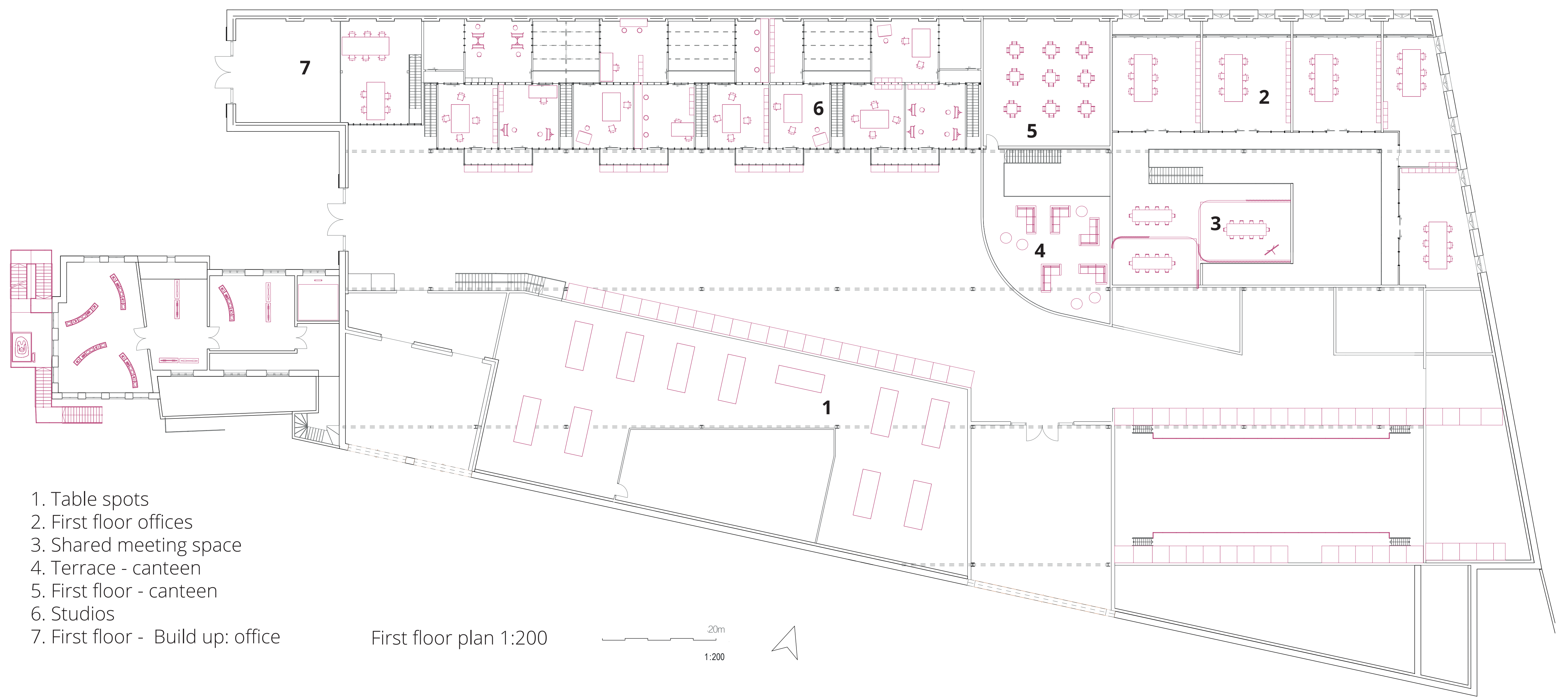
Section - Entrance Bohemia place : public hall | canteen | studios
CC | 1:200



Section - coordination : Offices | shared space | administration | Scrap XL
DD | 1:200

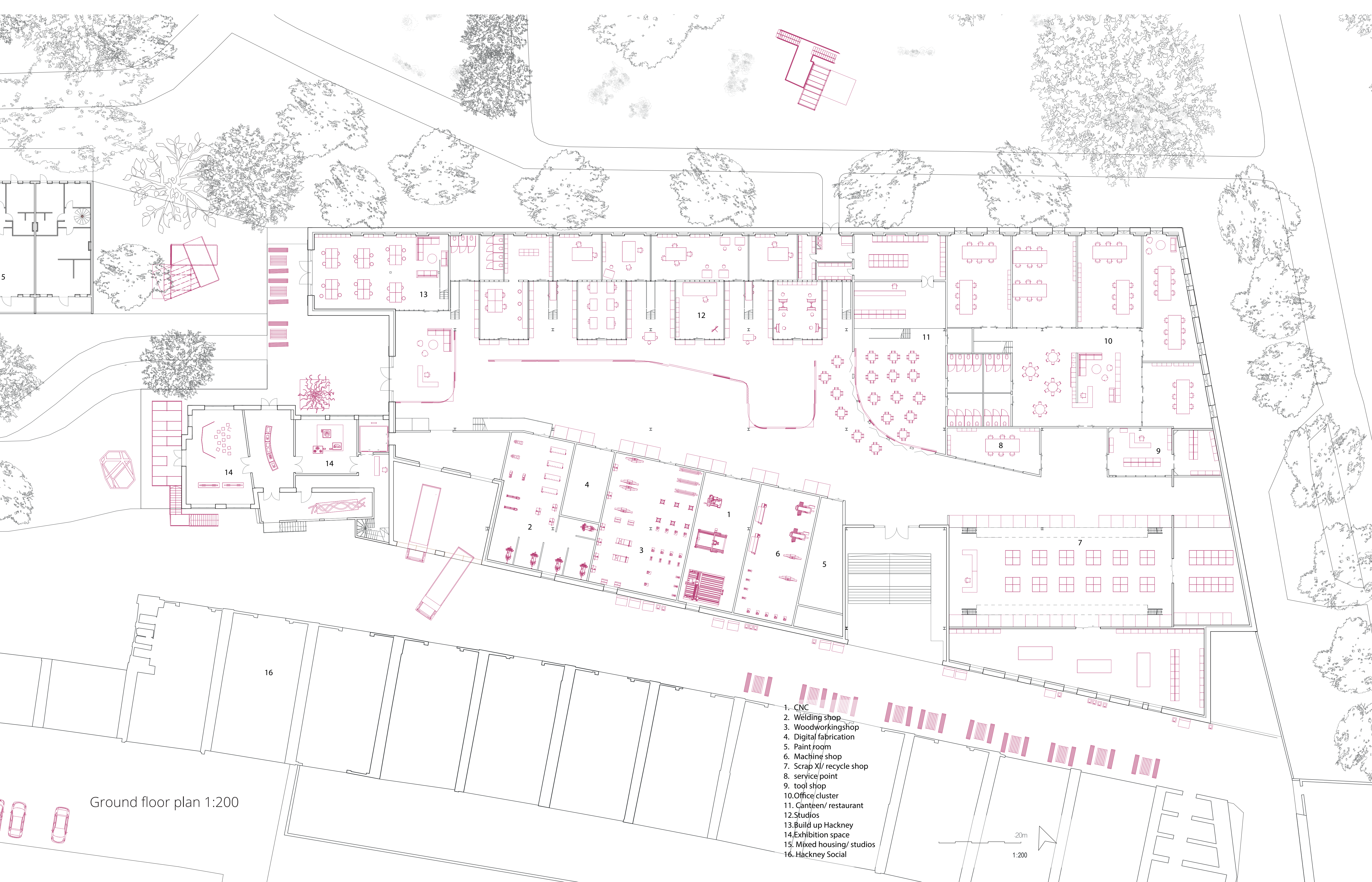


Elevation - south facade 1:200



- 1. Table spots
- 2. First floor offices
- 3. Shared meeting space
- 4. Terrace - canteen
- 5. First floor - canteen
- 6. Studios
- 7. First floor - Build up: office

First floor plan 1:200



Ground floor plan 1:200

- 1. CNC
- 2. Welding shop
- 3. Woodworking shop
- 4. Digital fabrication
- 5. Paint room
- 6. Machine shop
- 7. Scrap XL/ recycle shop
- 8. service point
- 9. tool shop
- 10. Office cluster
- 11. Canteen/ restaurant
- 12. Studios
- 13. Build up Hackney
- 14. Exhibition space
- 15. Mixed housing/ studios
- 16. Hackney Social