

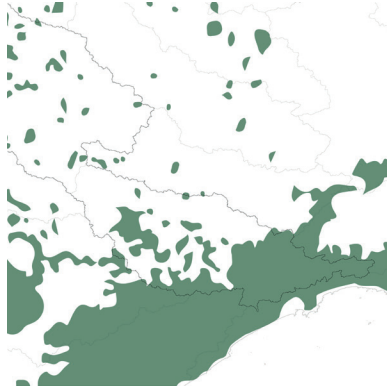
^ The two main basins of South America:  
Amazon and Prata

^ Location of the Tietê River Basin within  
the Prata Basin

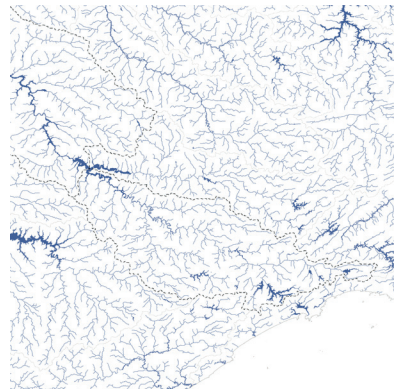
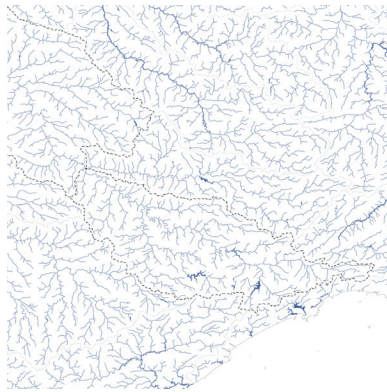
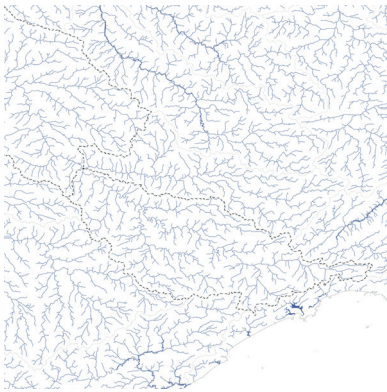
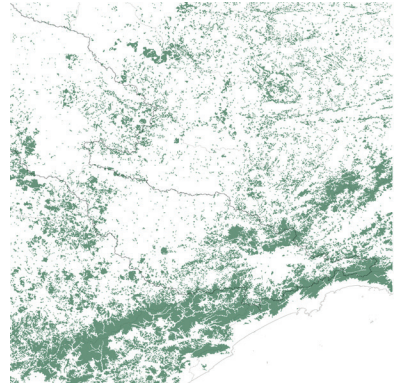
1854



1935



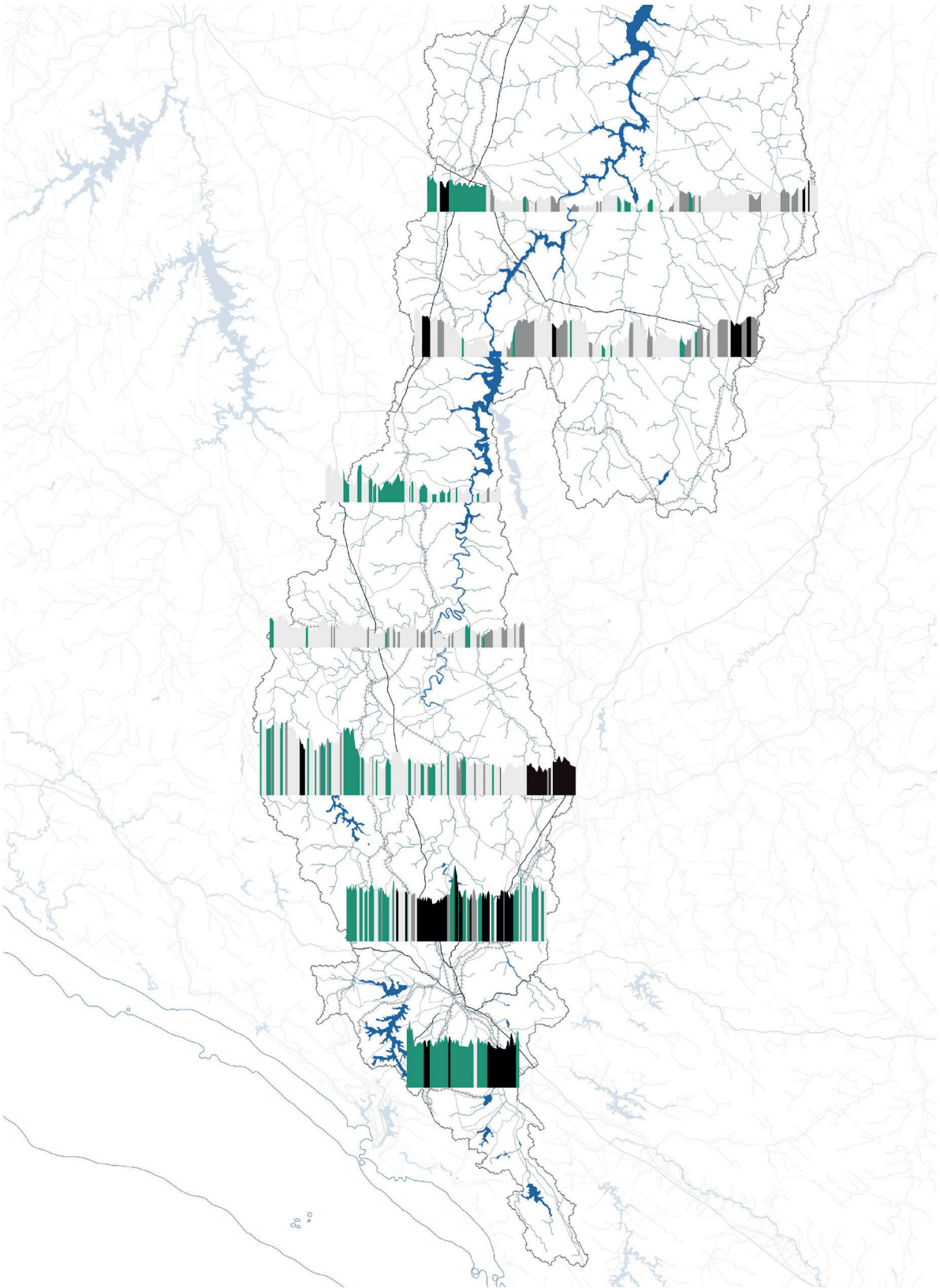
2021



**The key moments of change of the Tietê River Basin, SP, Brazil**

From top to bottom: Forest Cover, Water Networks and Topography.  
The author, 2021

- Remaining forest cover
- Streams and rivers
- Water bodies
- Height contour lines (100m)
- Tietê River Basin



Diversity of Land Uses Along the Basin

| 0

| 50 km



- Urban
- Agriculture
- Barren land
- Forest
- Water bodies
- Bathymetry (100m)
- Railways
- Structural highways
- Highways

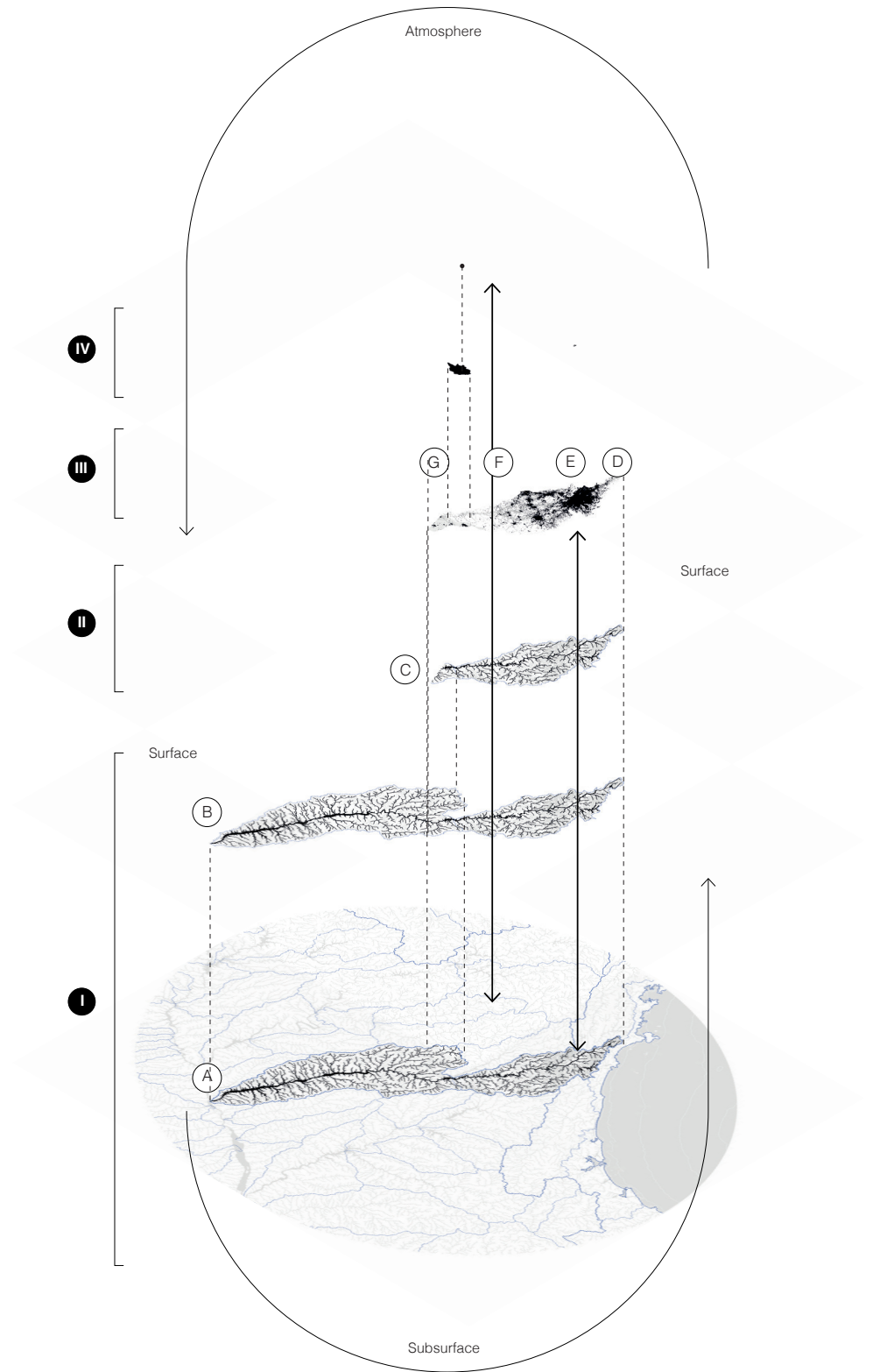
IV. Object  
Geo-physical | Cultural  
Manifestation of a process at a specific point

III. Ensemble  
Geo-physical | Cultural | Political  
Areas of influence of a given process

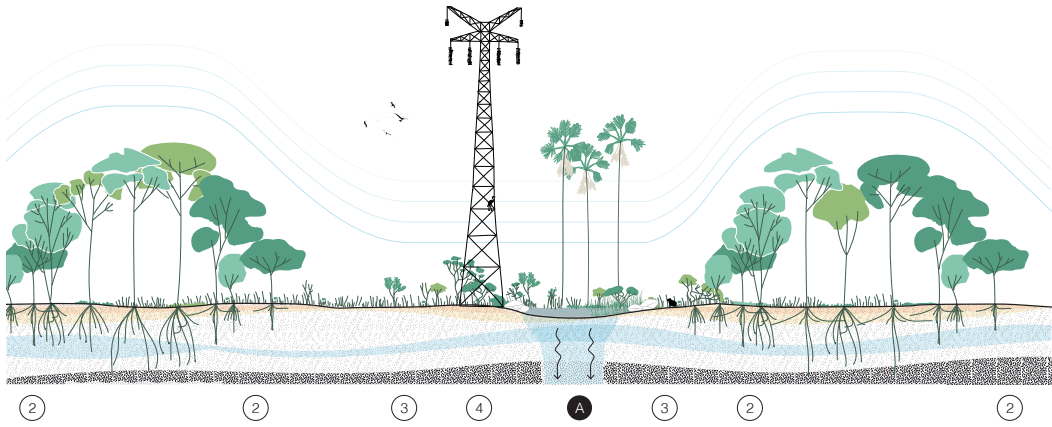
II. Landscapes  
Geo-physical | Cultural | Political

D. Coastal mountain range;  
E. Metropolitan region;  
F. Hills of the peripheral valley and scarps;  
G. Paulista Plateau;

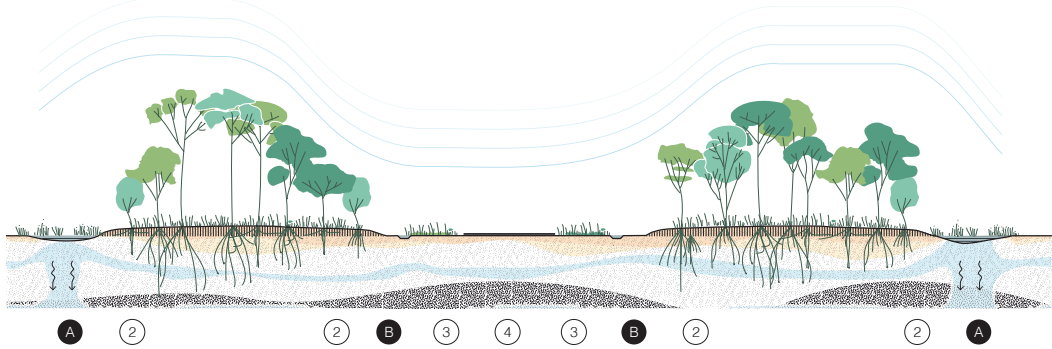
I. Land  
Geo-physical  
A. Coastal zones of the continent  
B. Tietê River Basin  
C. Upper Tietê River Basin



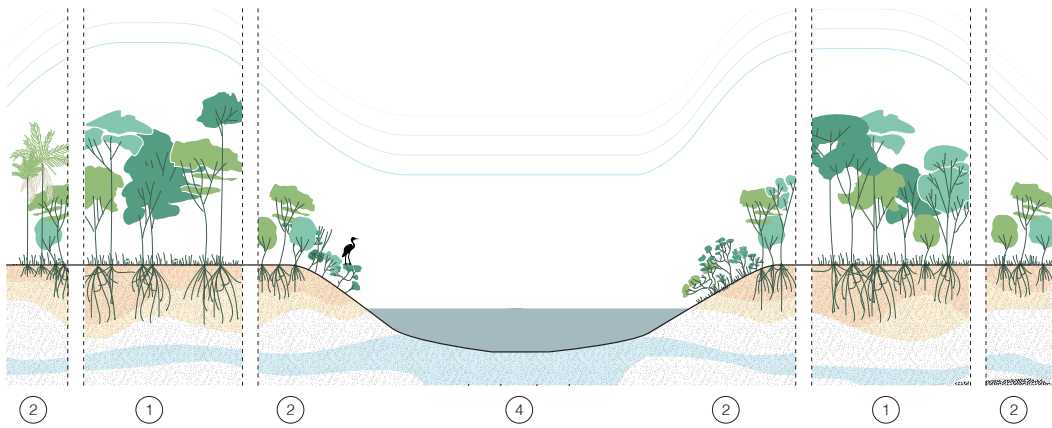
**Designing with various systems,  
landscapes, and water trends**



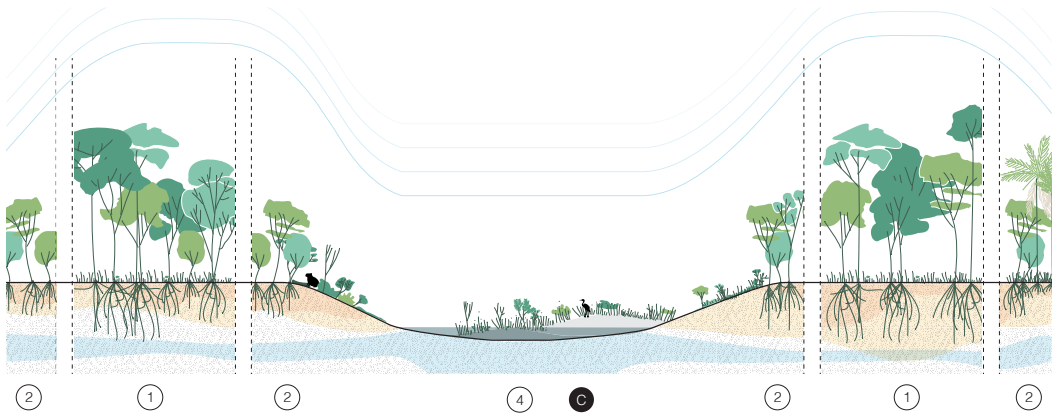
**Ecological corridor along powerlines**  
Disturbance Corridor/ Introduced Corridor



**Ecological corridor along roads**  
Disturbance Corridor



**River Corridor**  
Environmental corridor



**Floodplain Corridor**  
Environmental corridor

- |                    |                         |
|--------------------|-------------------------|
| 1. Interior        | A. Infiltration Pond    |
| 2. Edge            | B. Ditch                |
| 3. Verge           | C. Constructed Wetlands |
| 4. Internal Entity | D. Wooden Piling        |
| 5. Veil            |                         |
| 6. Mantel          |                         |
| 7. Cropland        |                         |

**Farmer's port of Igarapu do Tietê**

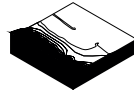
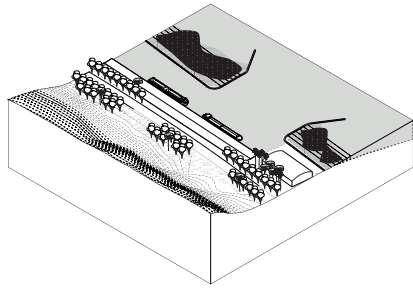
Topography

Light-engineering works

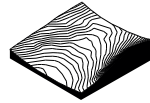
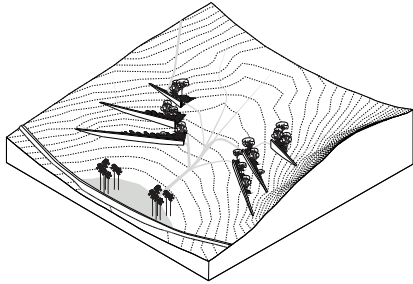
Water

Sedimentation

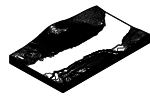
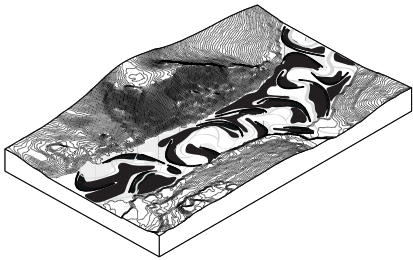
Vegetation



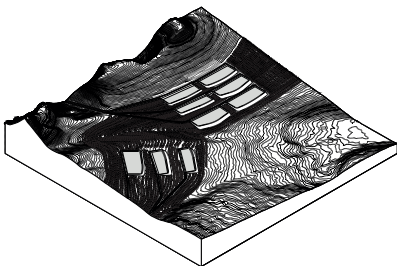
**Archeological Park of Barra Bonita**



**Várzea Park**



**Guarani water battery**



**Cuesta's hillslopes conservation and infiltration plan**

