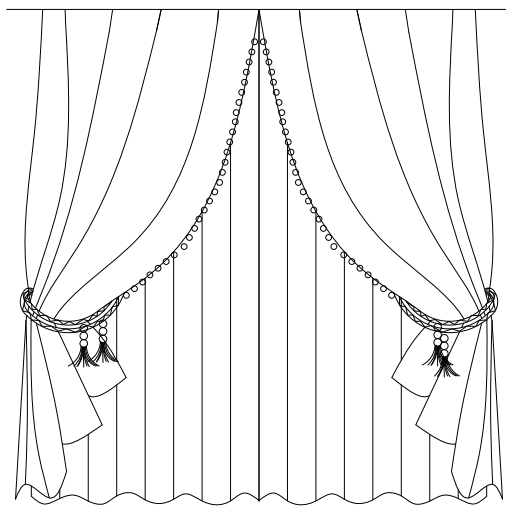
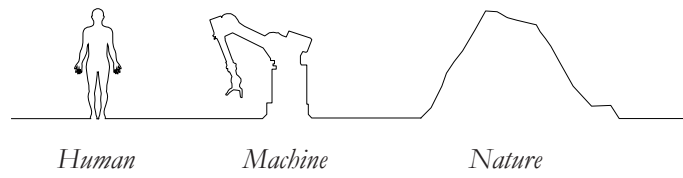


Gizmo

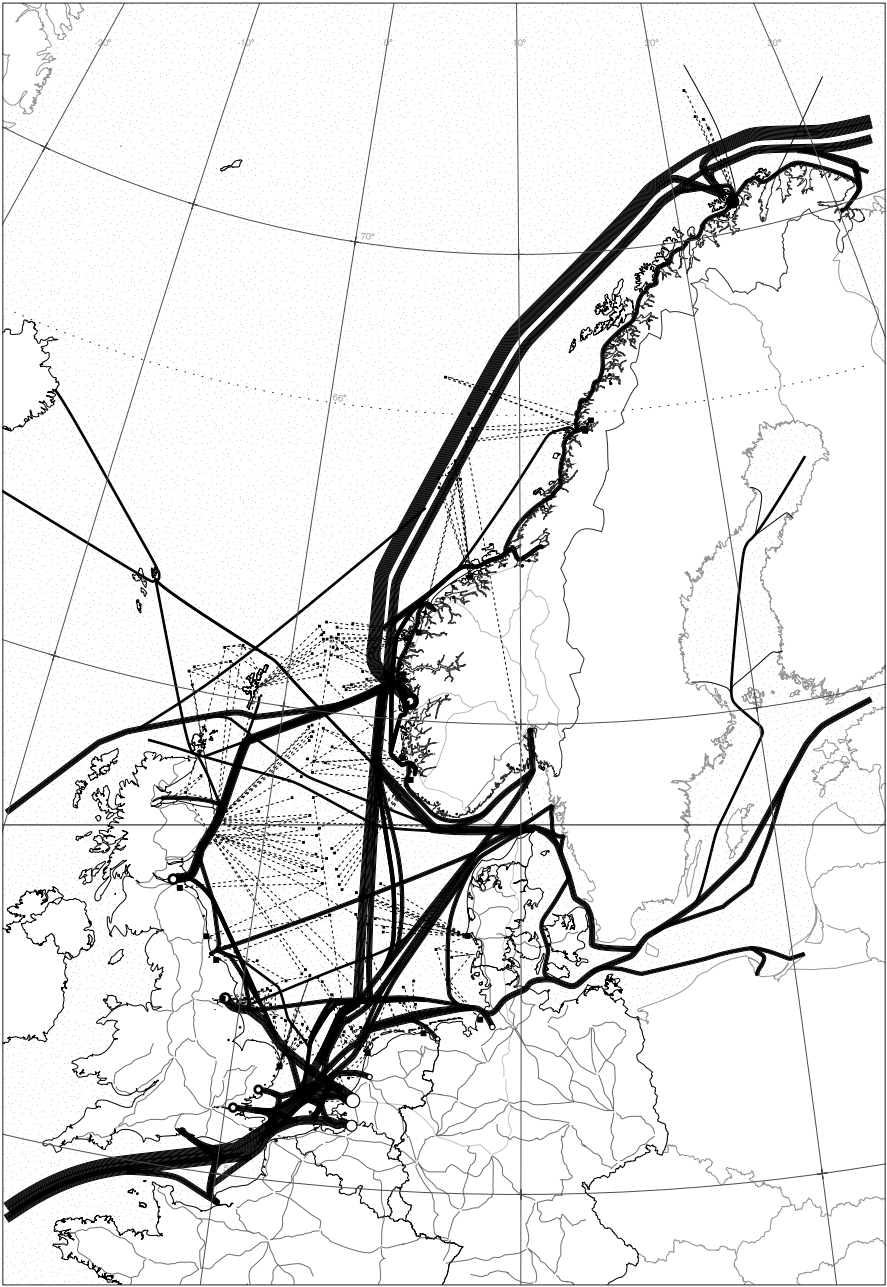
The Theatre of Automation in the
post-labour society of Hammerfest

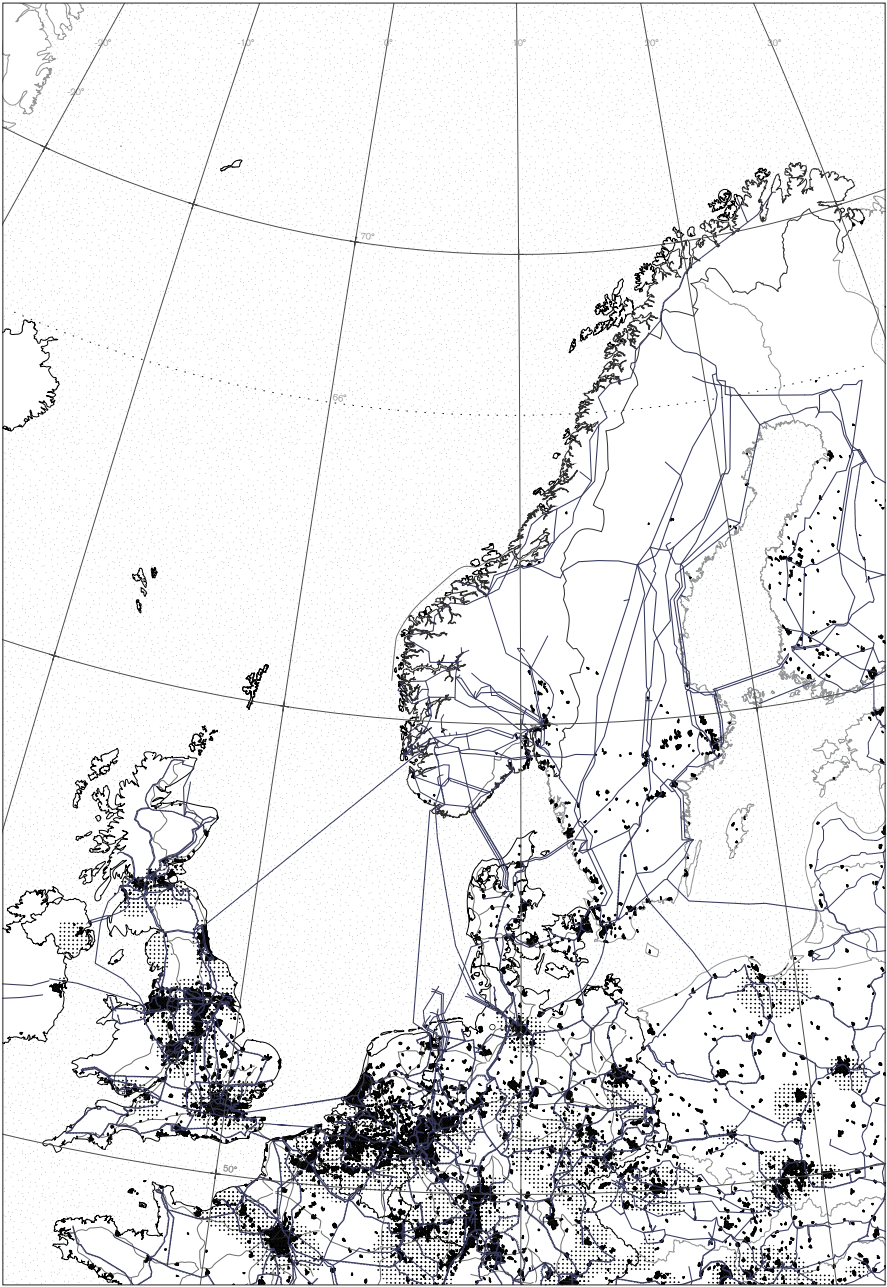
Gioele Colombo
Transitional Territories Studio
P5 Presentation
25 06 20





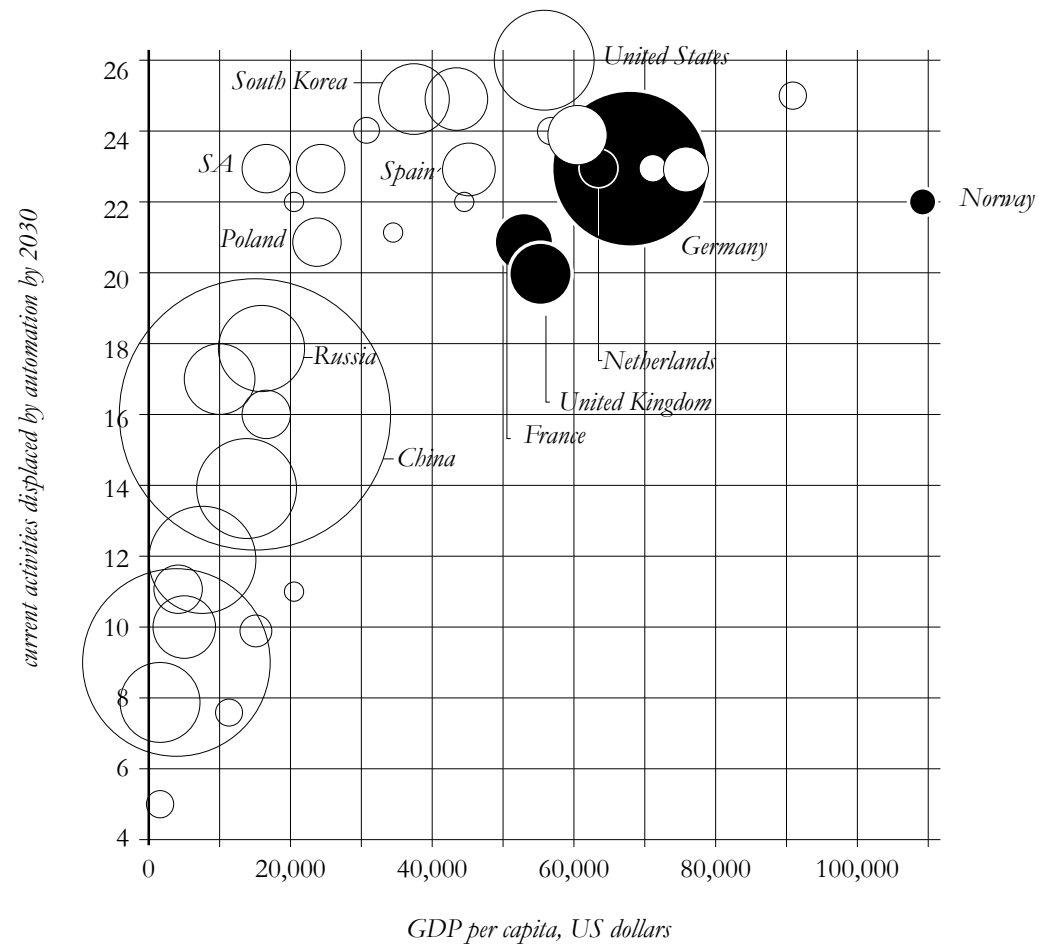
Prologue



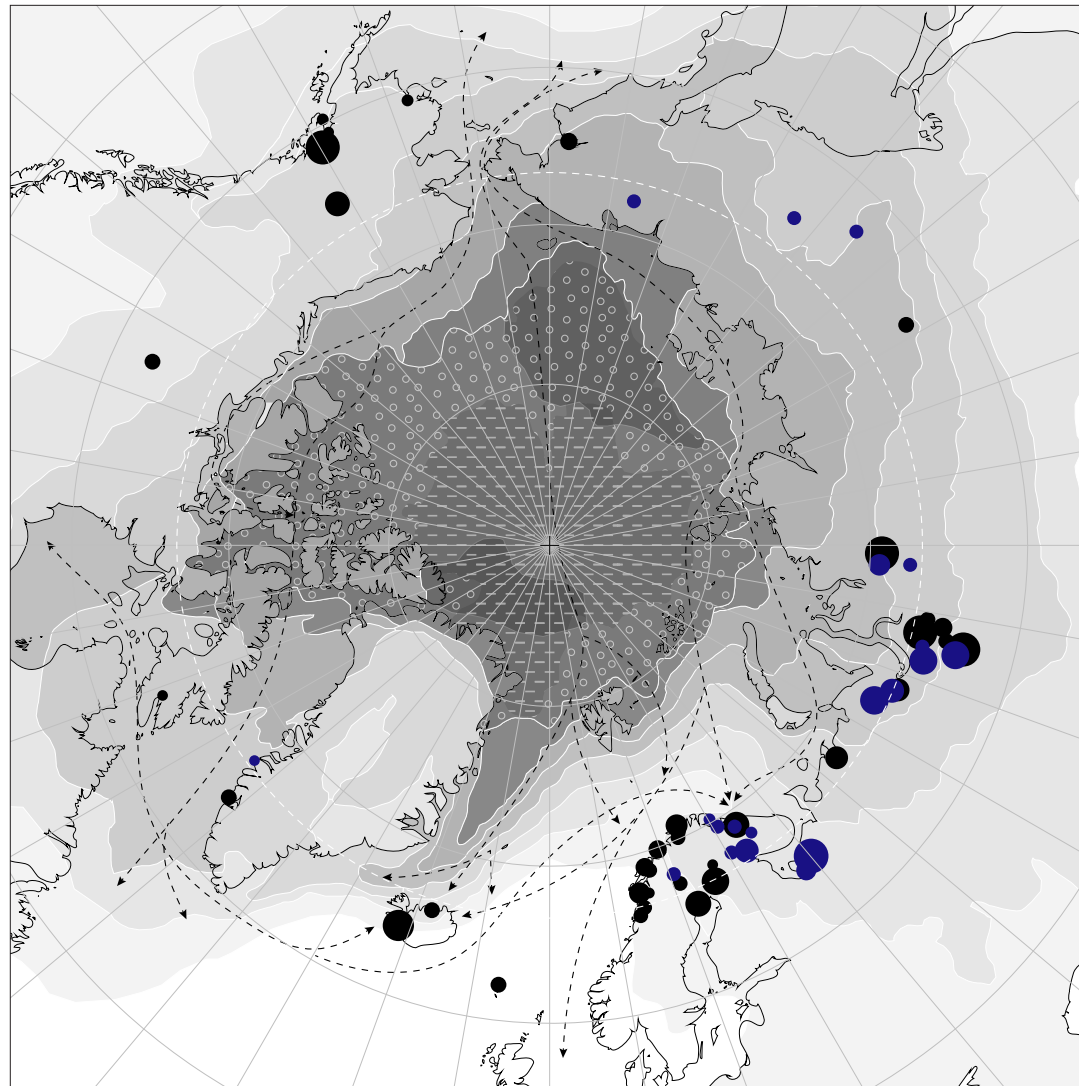








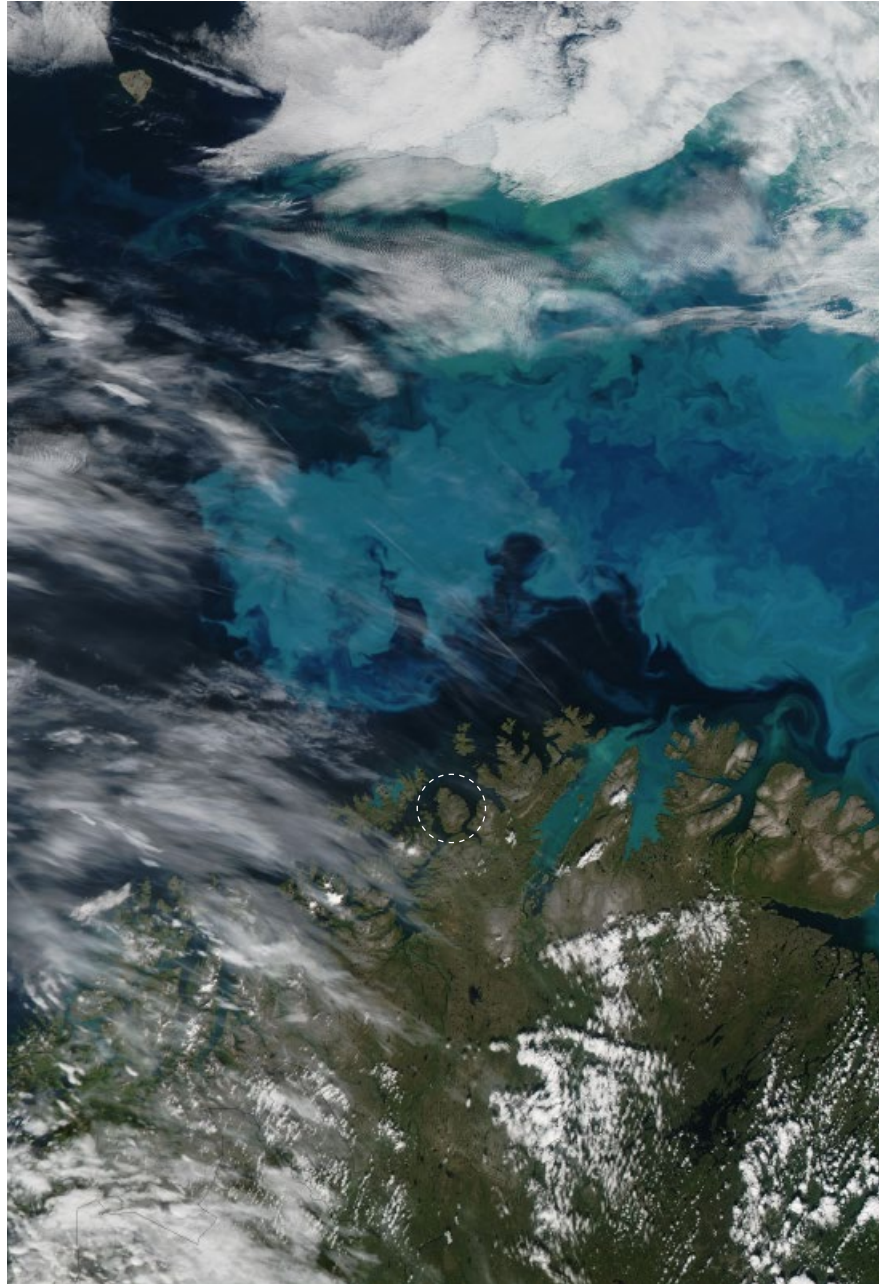
Territories of Automation

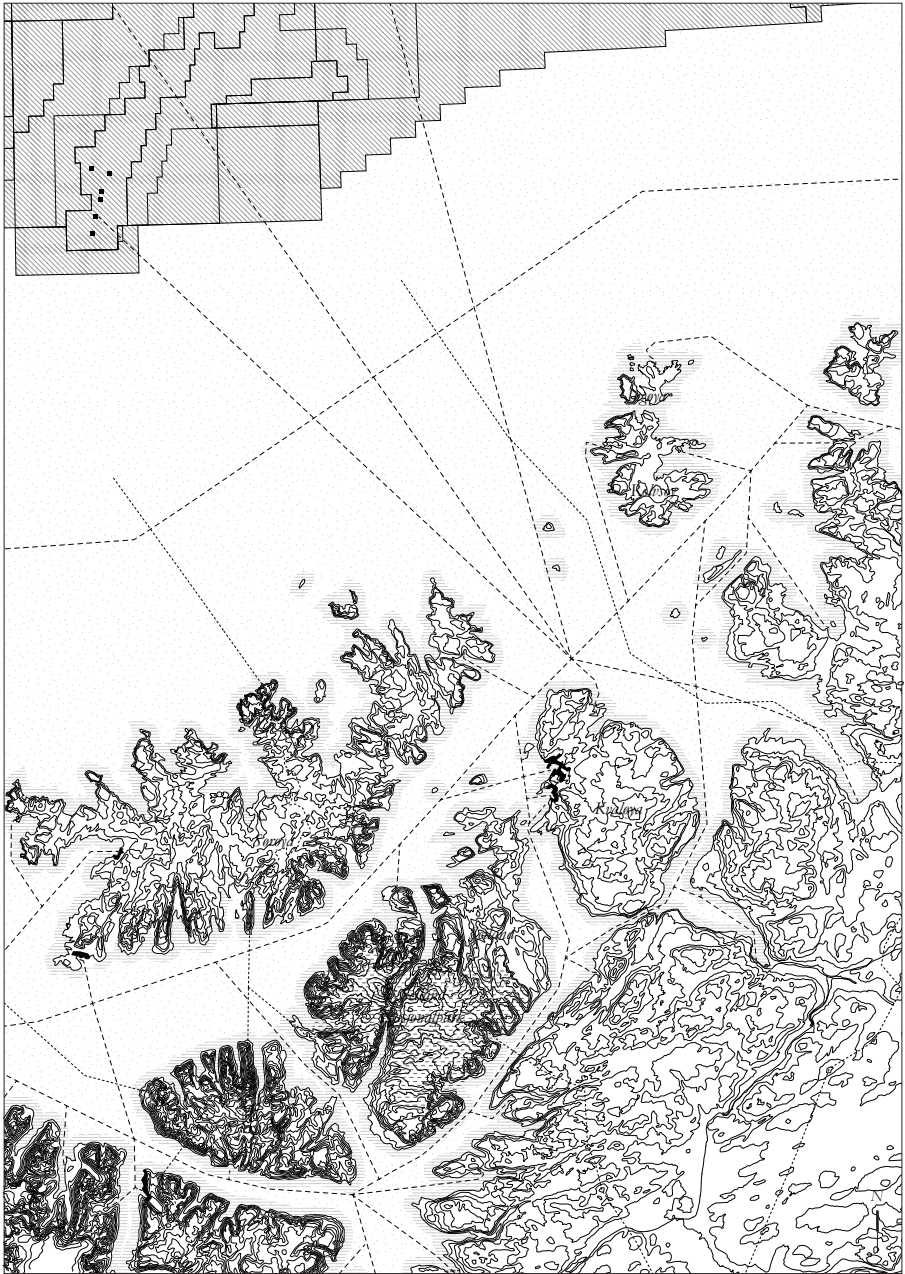


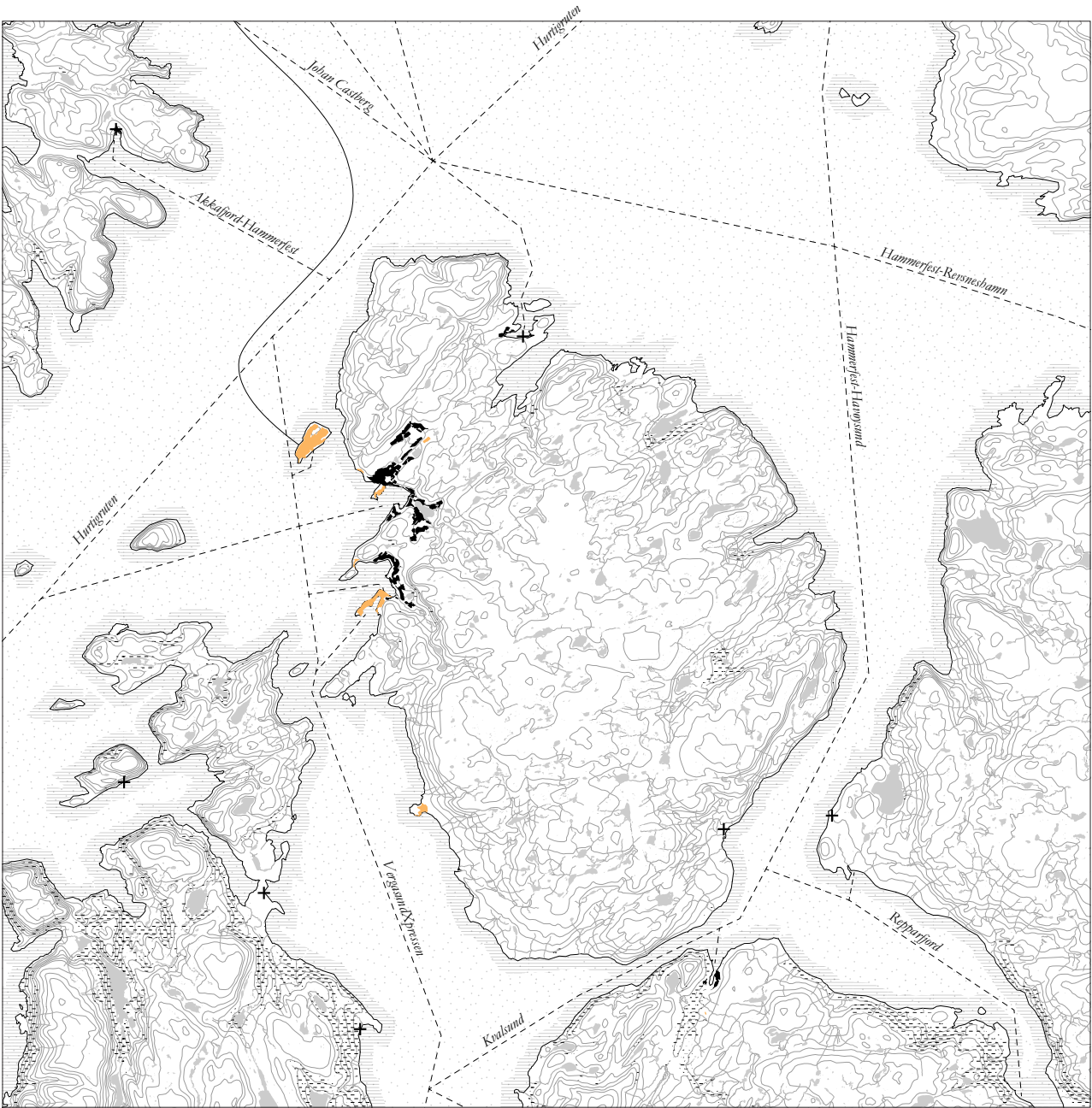
- Population growth
- Population decline



Hammerfest, Norway











How can society react to the demise of labour, as a consequence of full automation?

The Ludic Dimension



work



automation

play

play /pleɪ/

1. Engage in activity for enjoyment and recreation rather than a serious or practical purpose.

'the children were playing by a pool'

2. Take part in (a sport)

'I play squash and badminton'

3. Be cooperative

'he needs financial backing, but the building societies won't play'

4. Represent (a character) in a theatrical performance or a film.

'early in her career she played Ophelia'

5. Perform on (a musical instrument)

'a man was playing a guitar'

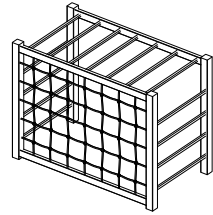
6. Move lightly and quickly, so as to appear and disappear; flicker.

'little beams of light played over the sea'

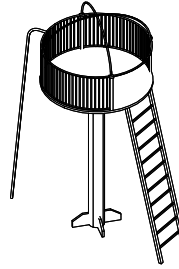


Collage by author. Children Playing in the Snow. Picture by Robert Capa + Melkoya Island, Hammerfest. Picture by Olaf Schneider.

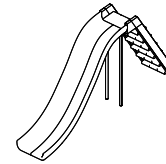




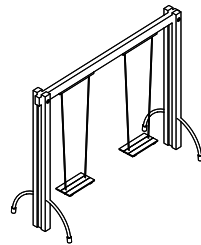
unoccupied



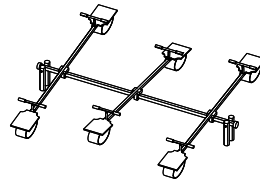
onlooker



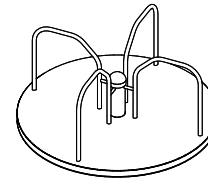
solitary



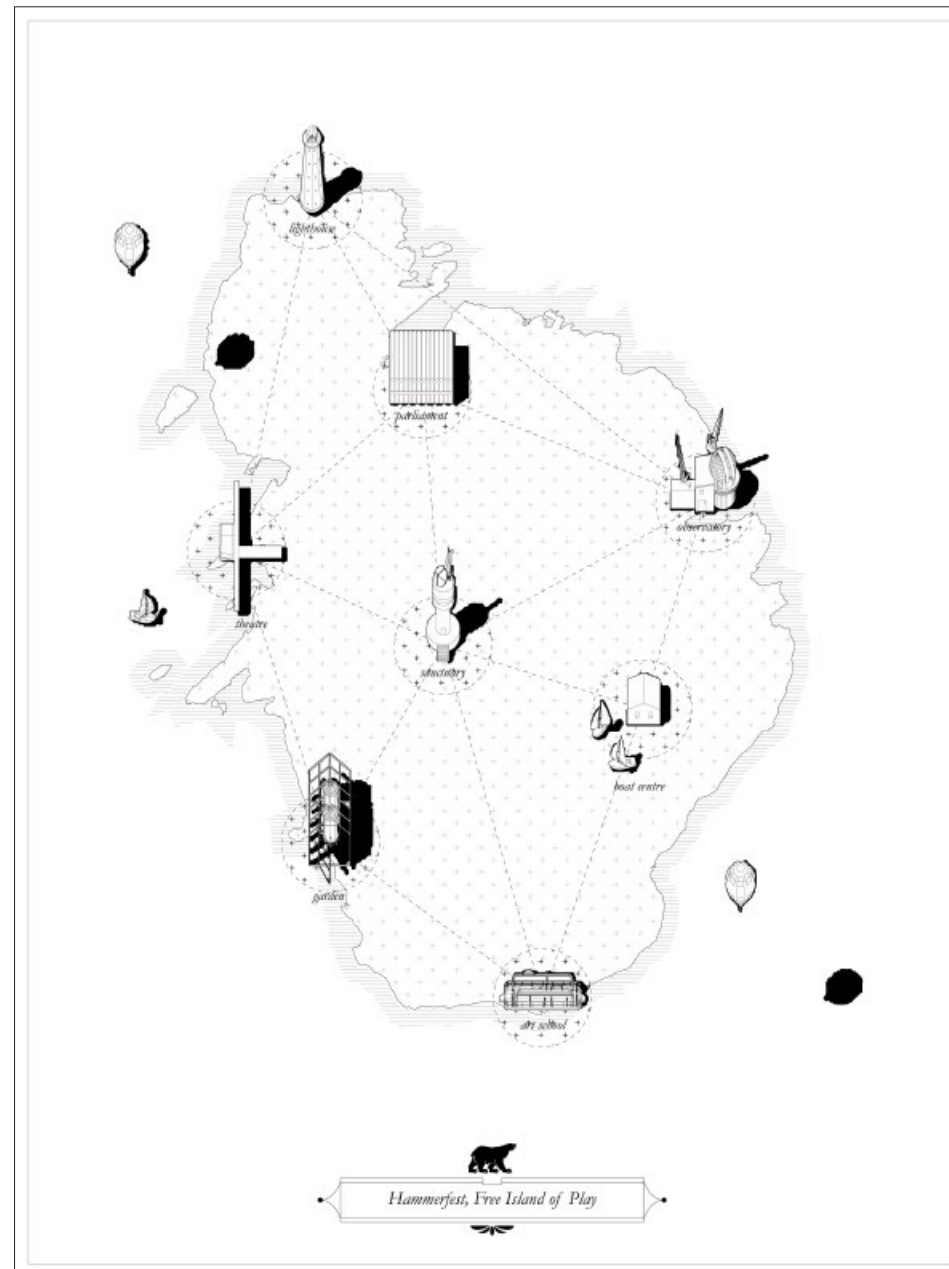
parallel

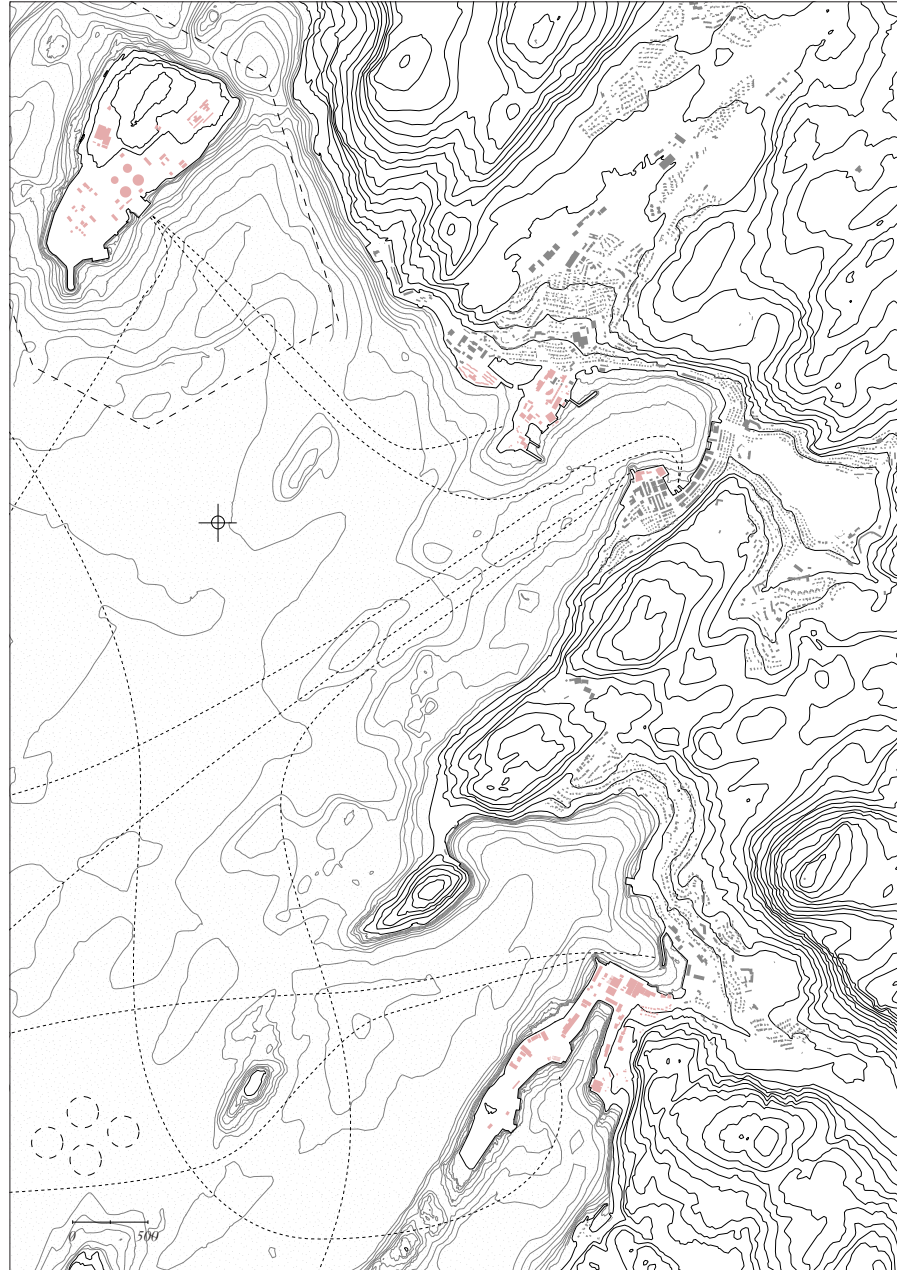


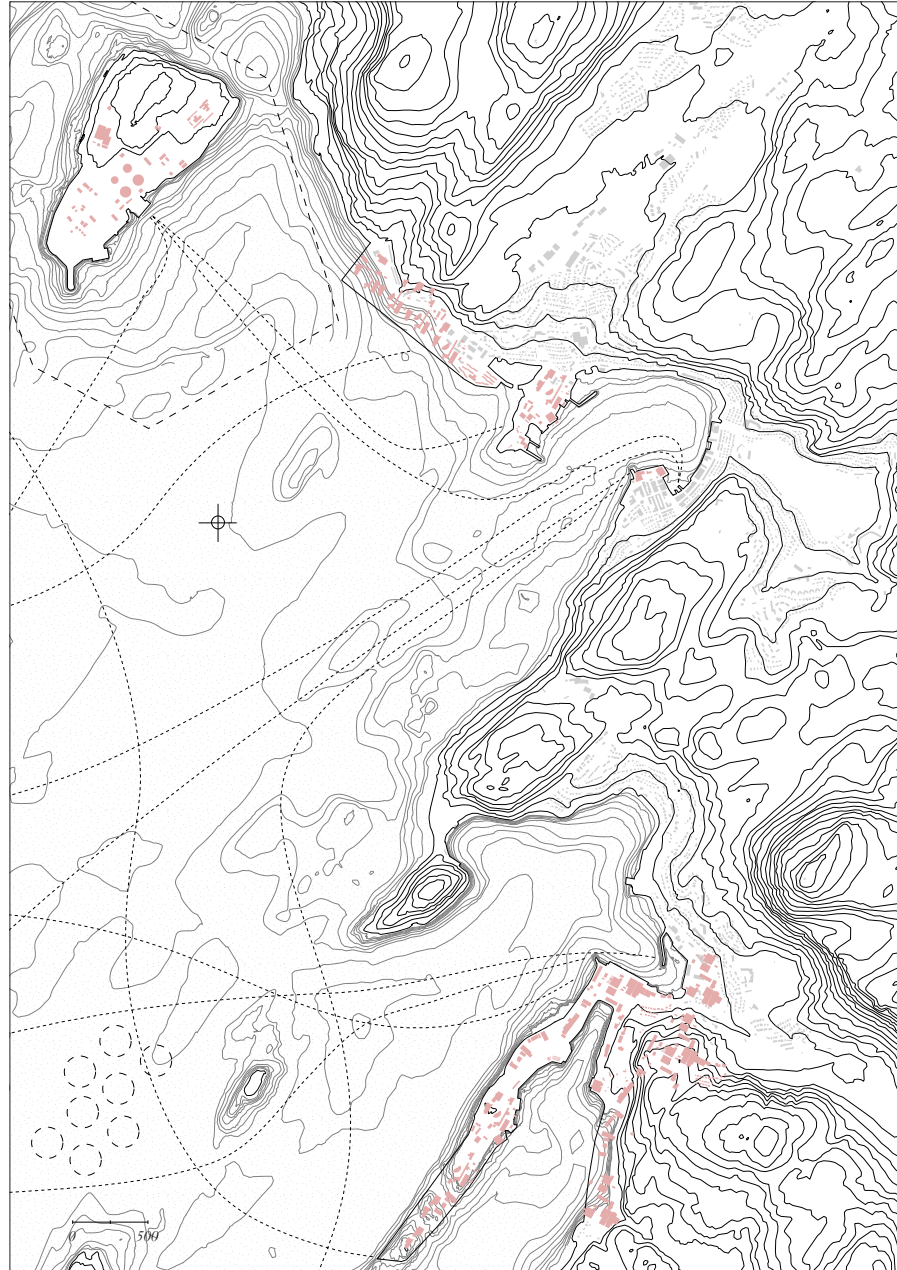
associative

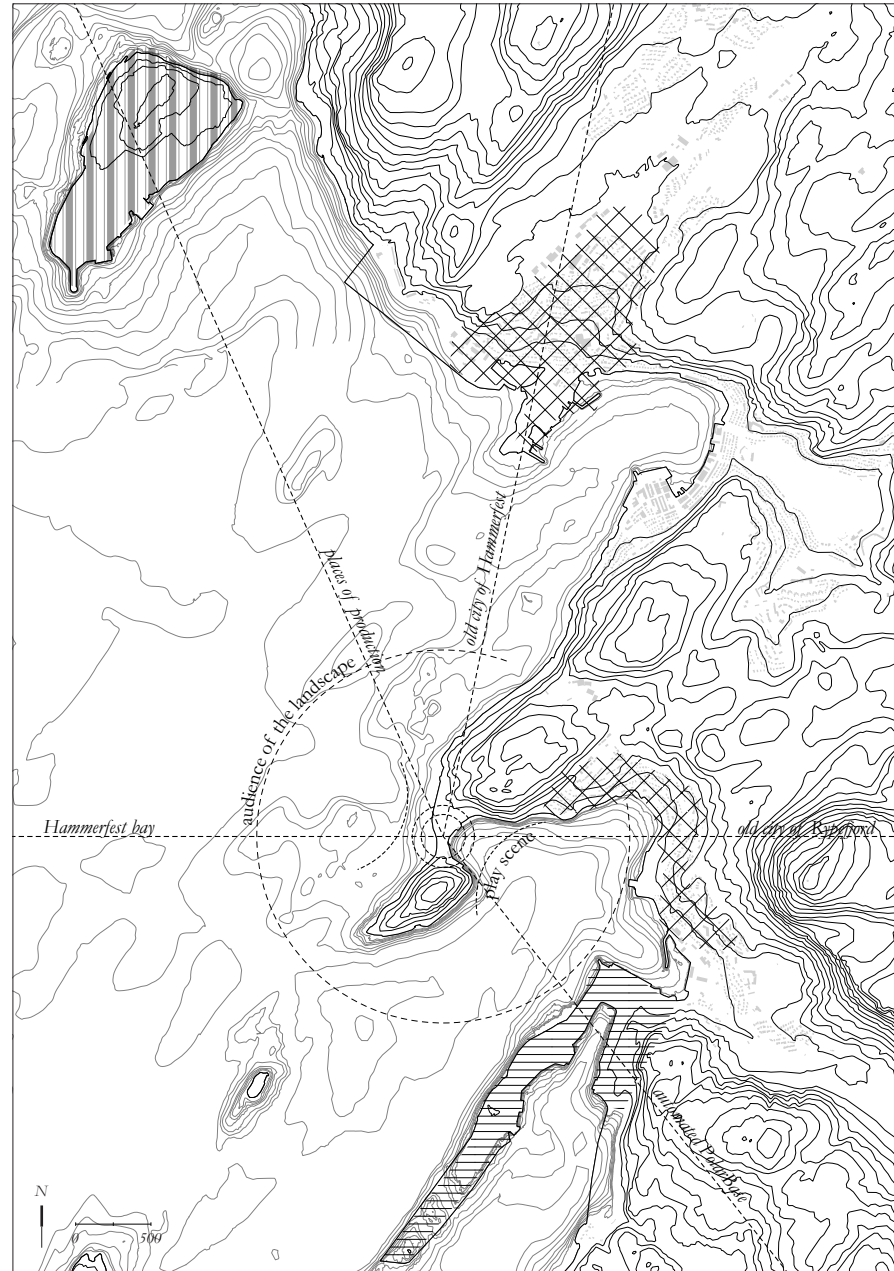


cooperative





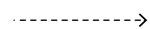






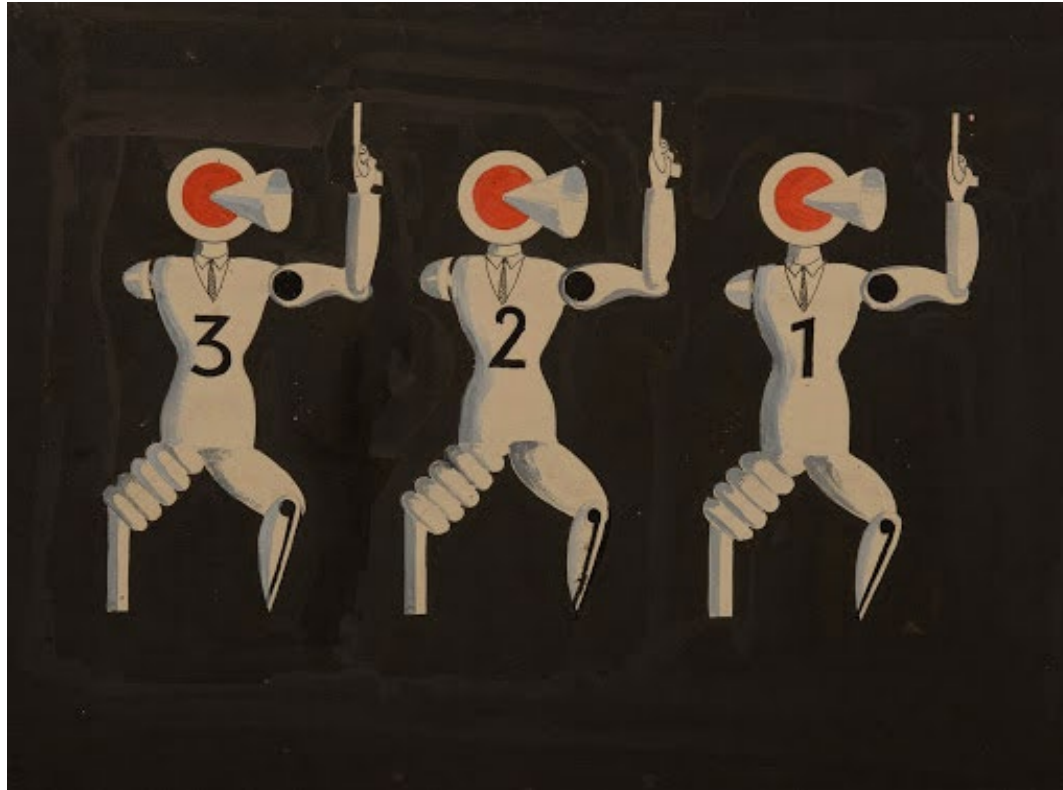
'The more man contemplates, the less he is'.
-Guy Debord

Θέατρον
(theatron)



δράμα
(drama)

Three Acts



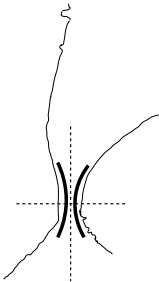
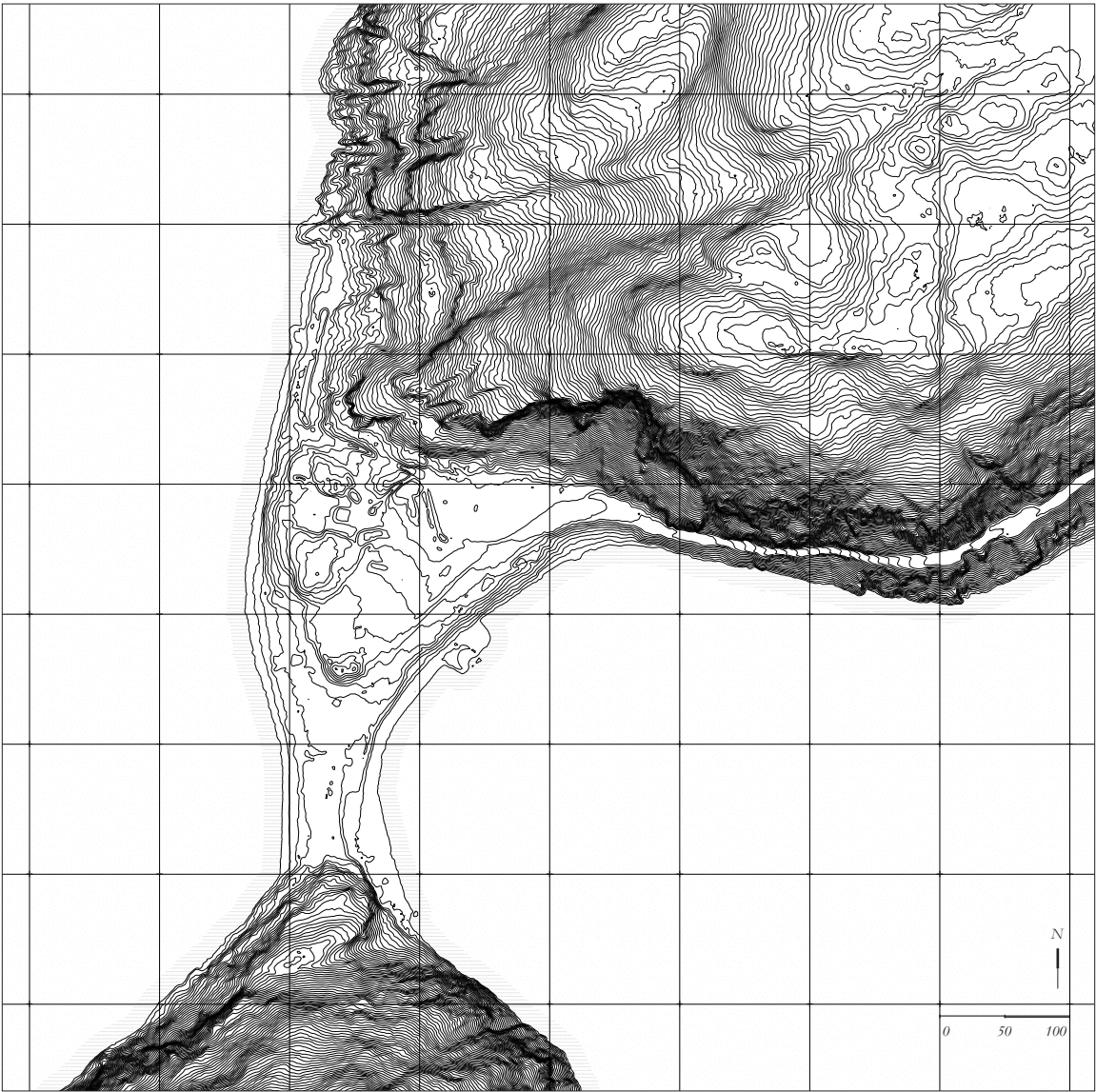
H
u
m
a
n

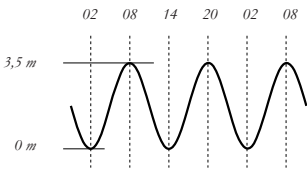
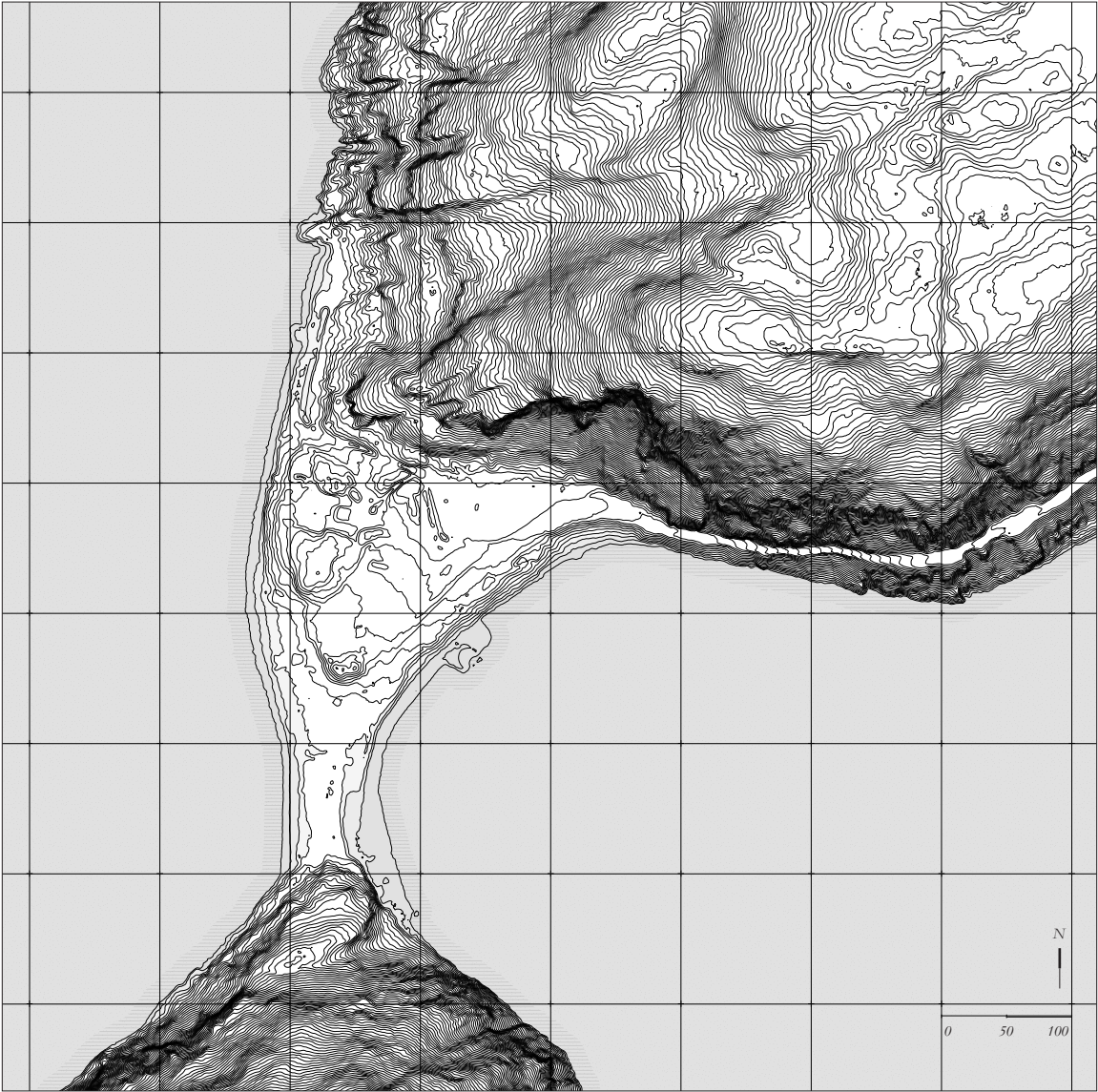
M
a
c
h
i
n
e

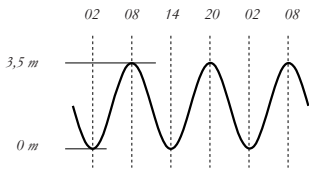
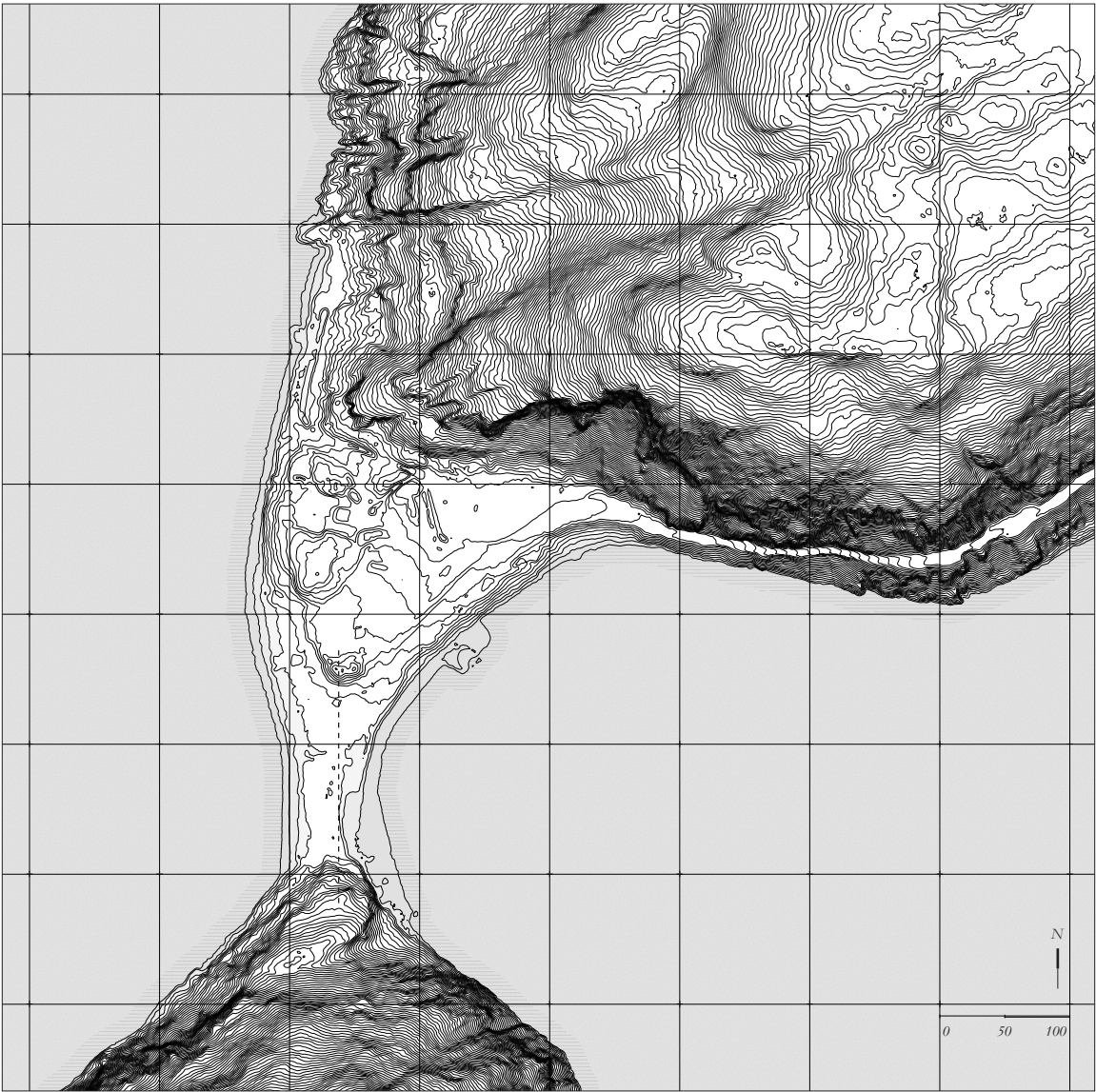
N
a
t
u
r
e

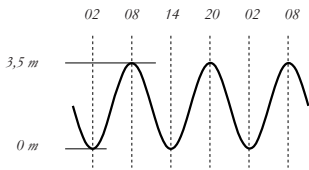
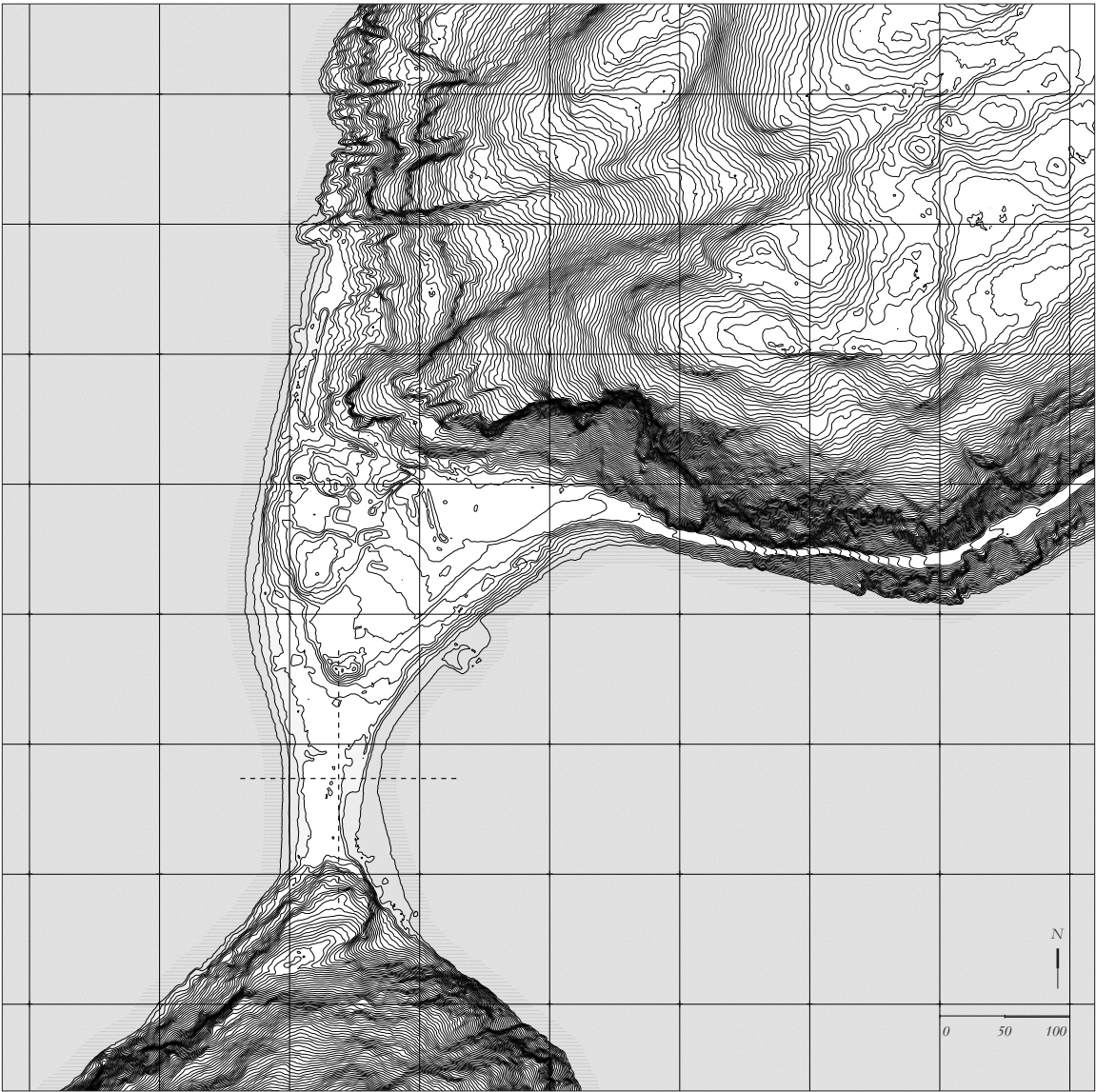
Act I

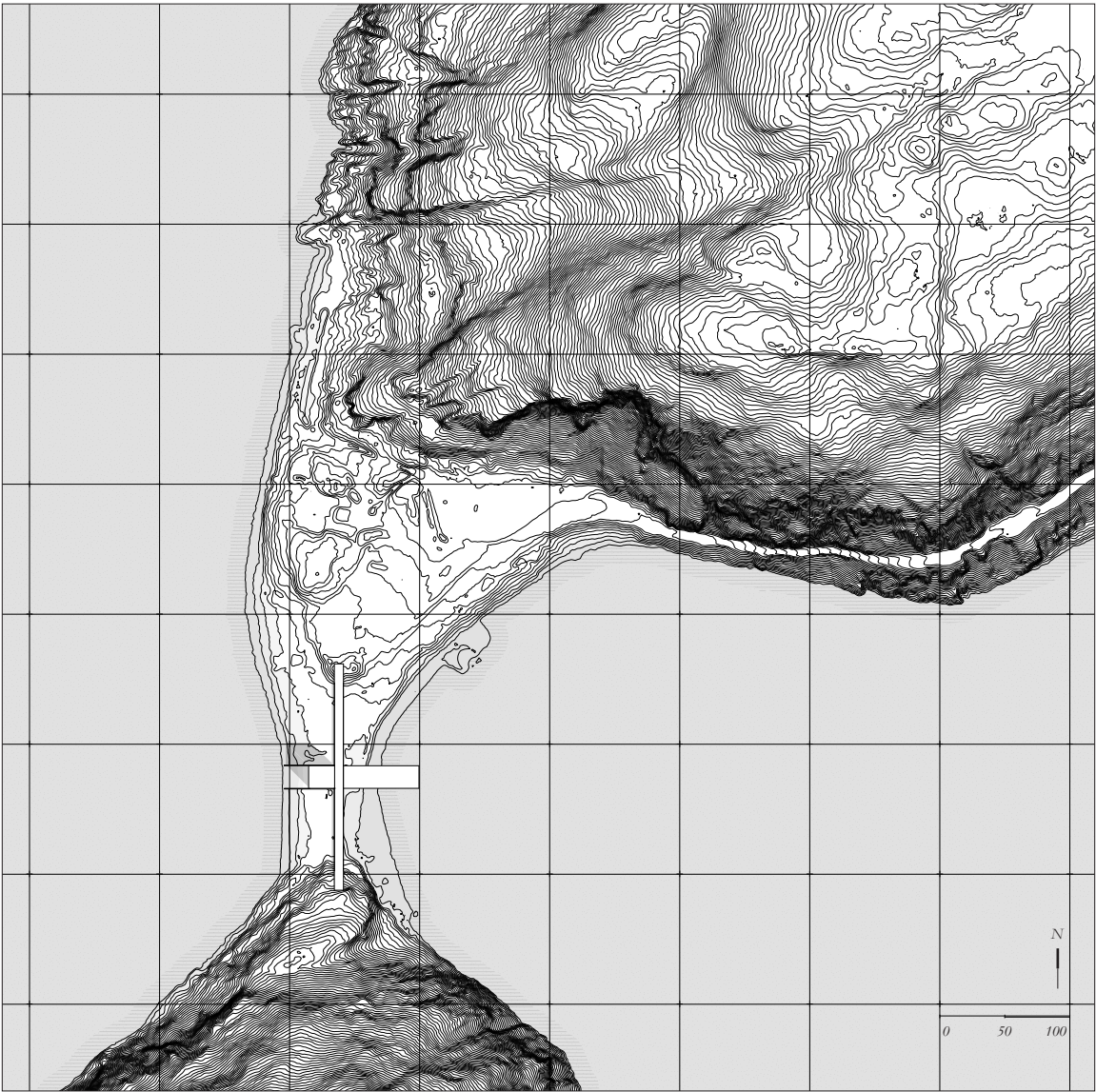
Transforming



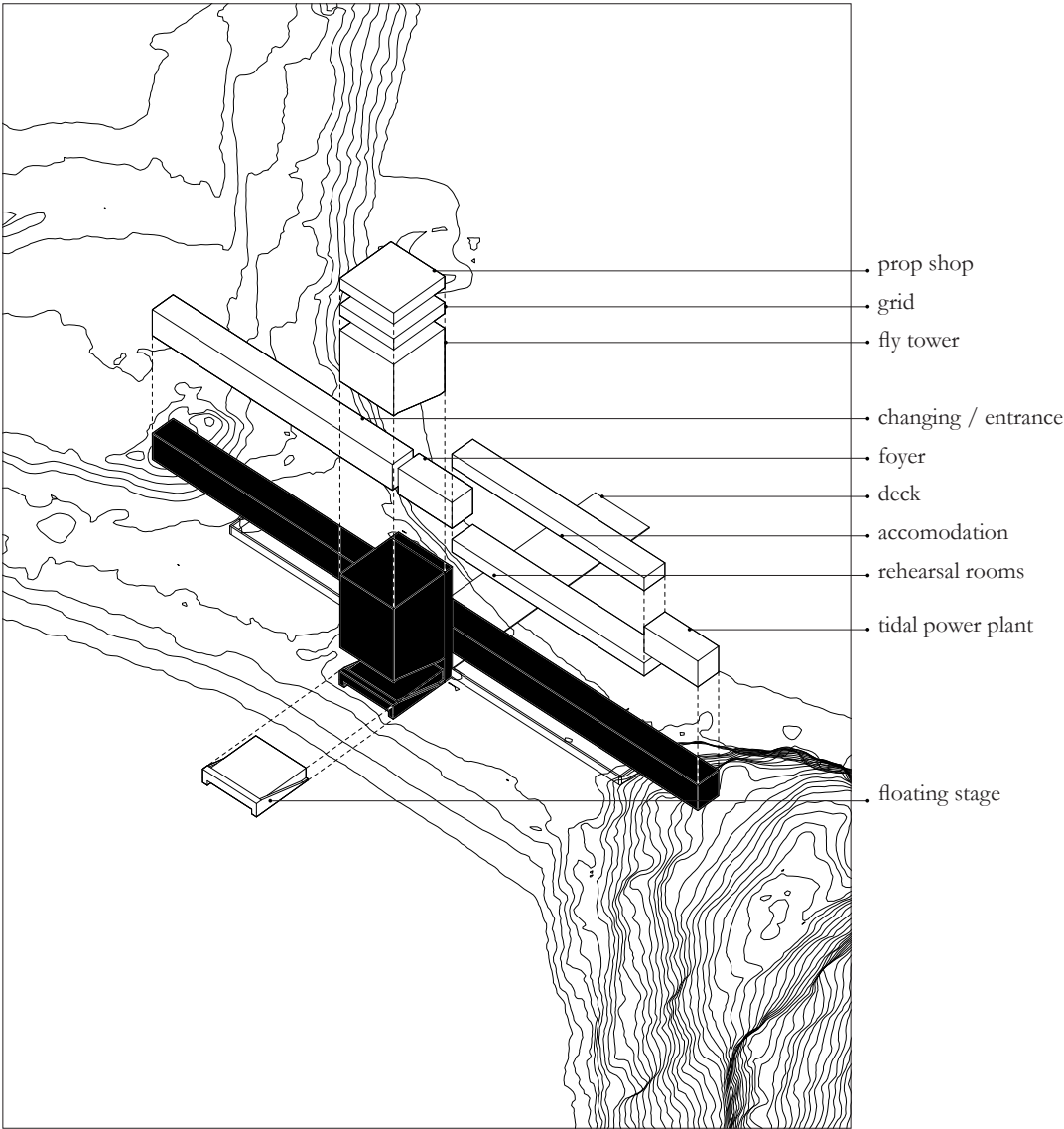


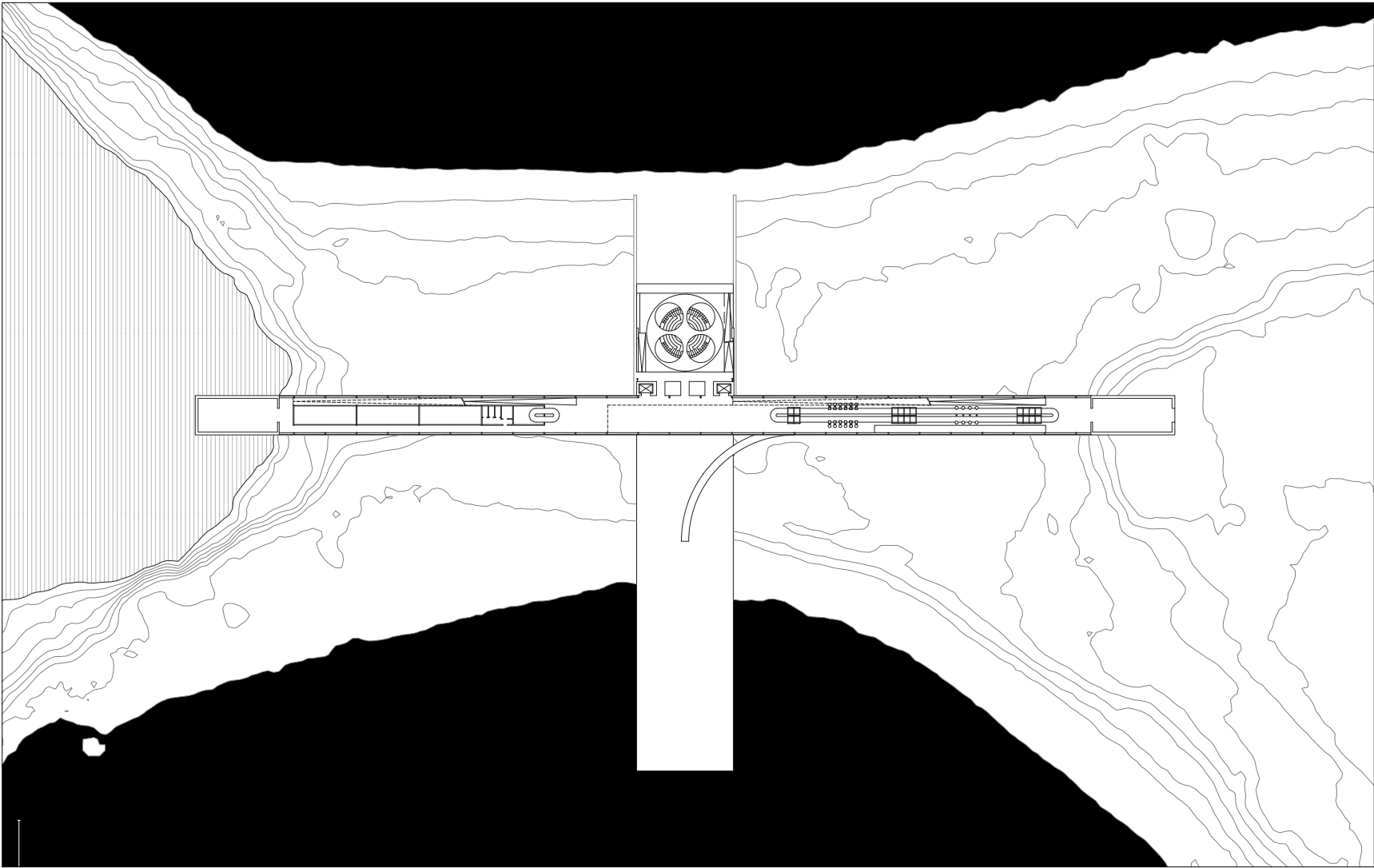




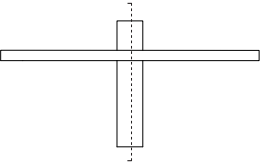
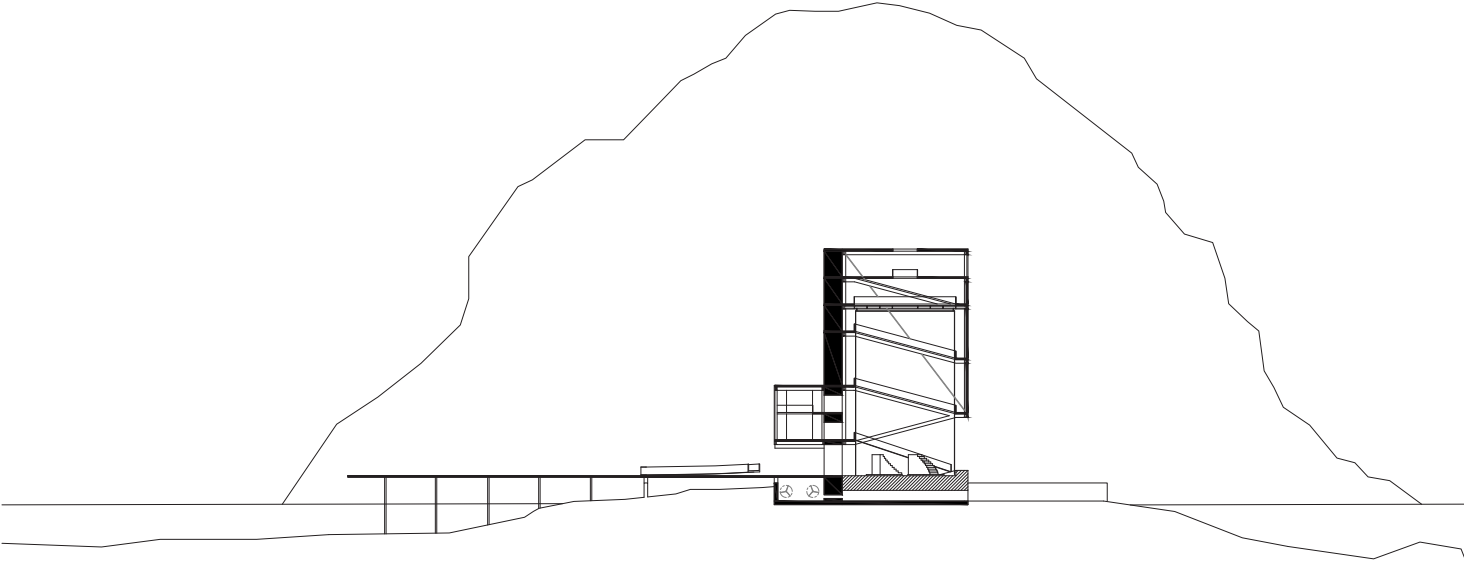




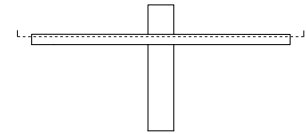
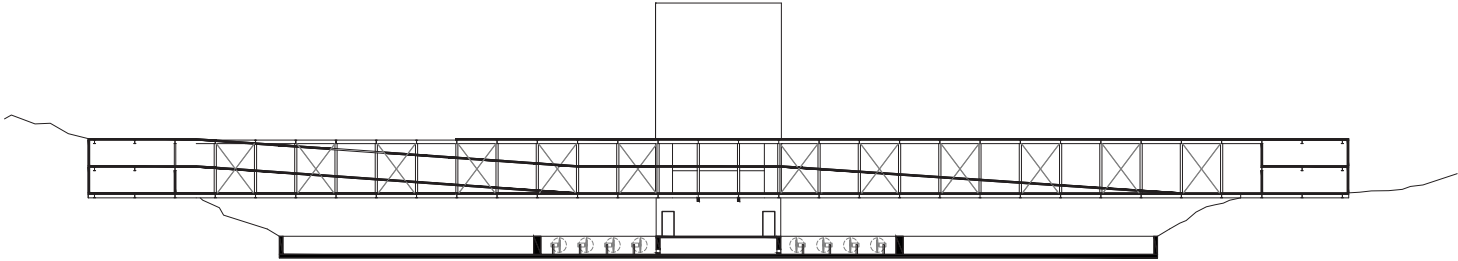


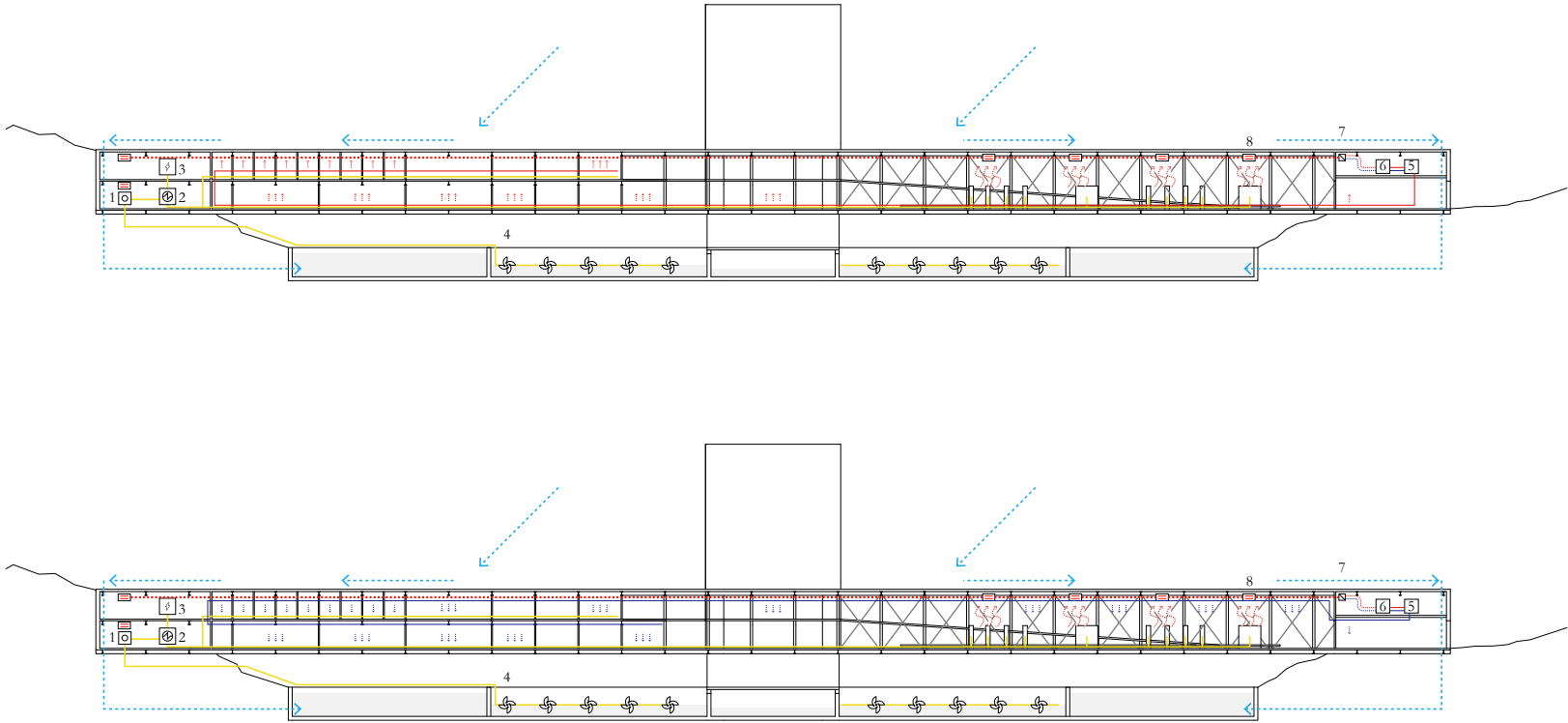


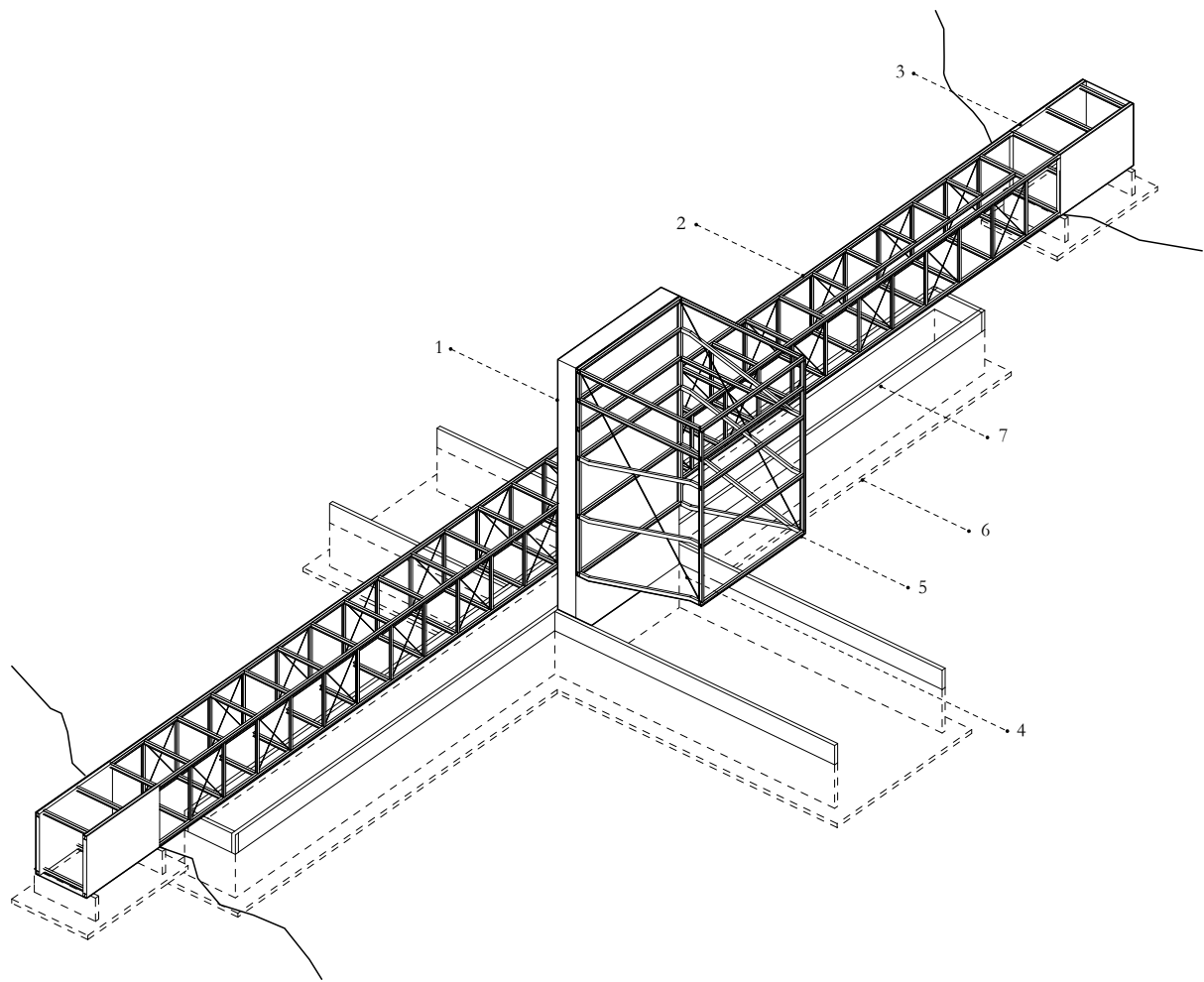
First floor



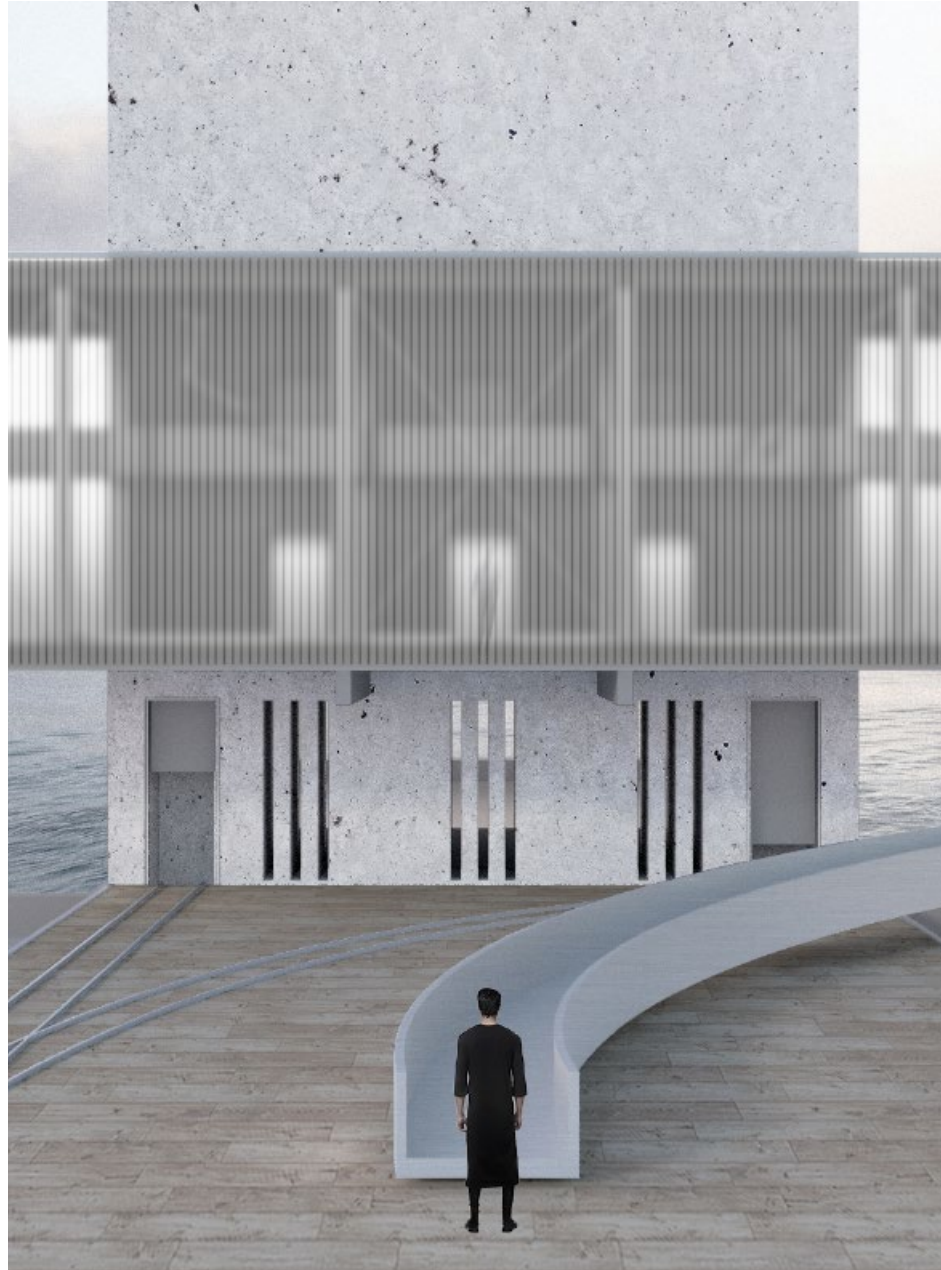
0 5 10

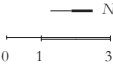
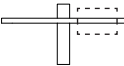
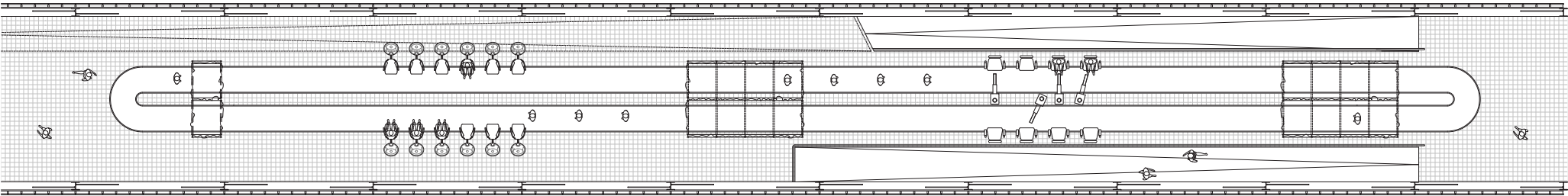






- 01 shear wall
- 02 bar/truss
- 03 concrete wall / bar foundation
- 04 bracing
- 05 tower
- 06 foundations
- 07 retaining walls for water storage

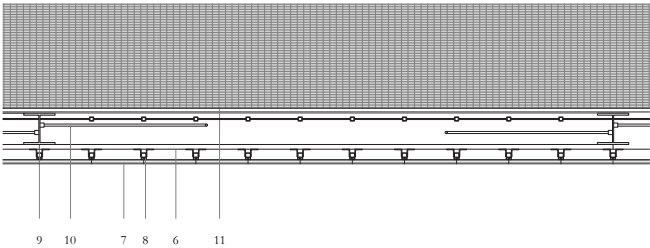
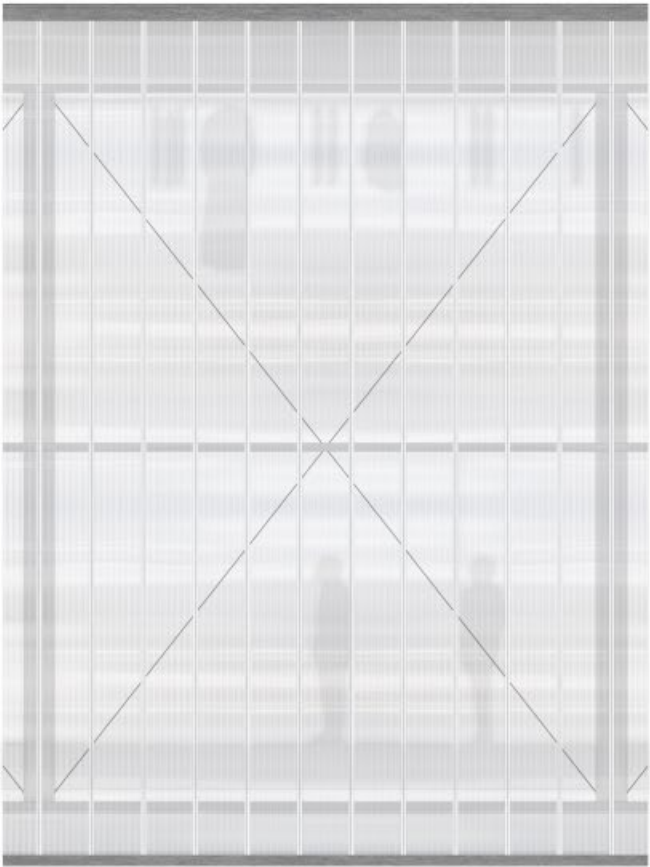
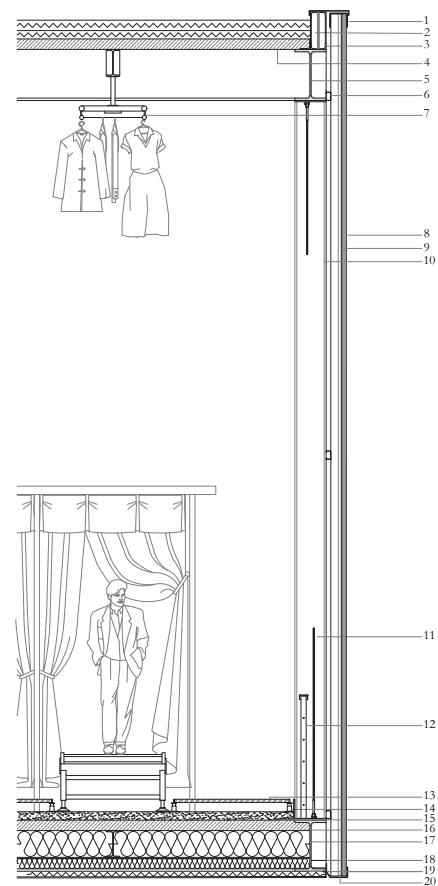


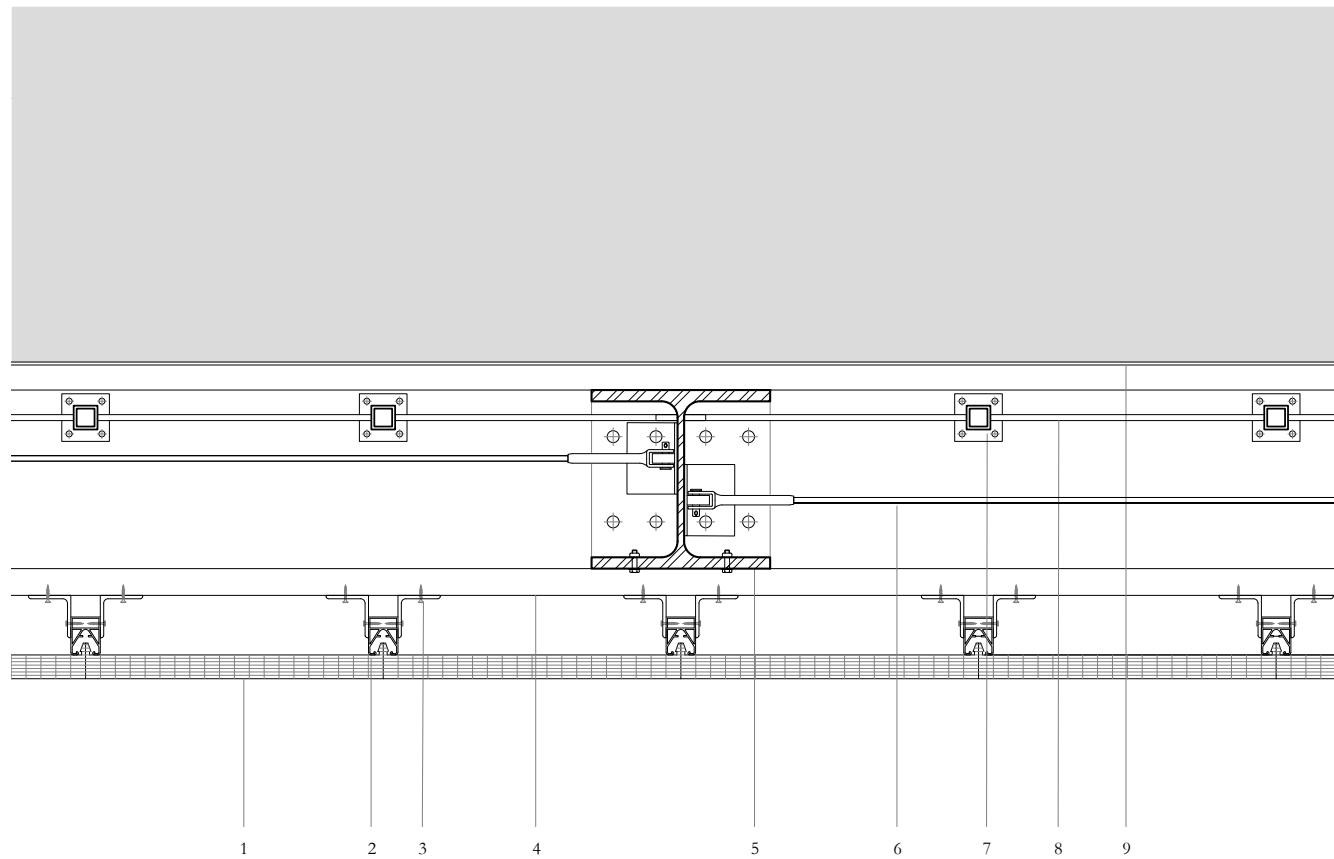


The Ritual of Dressing



Transparency



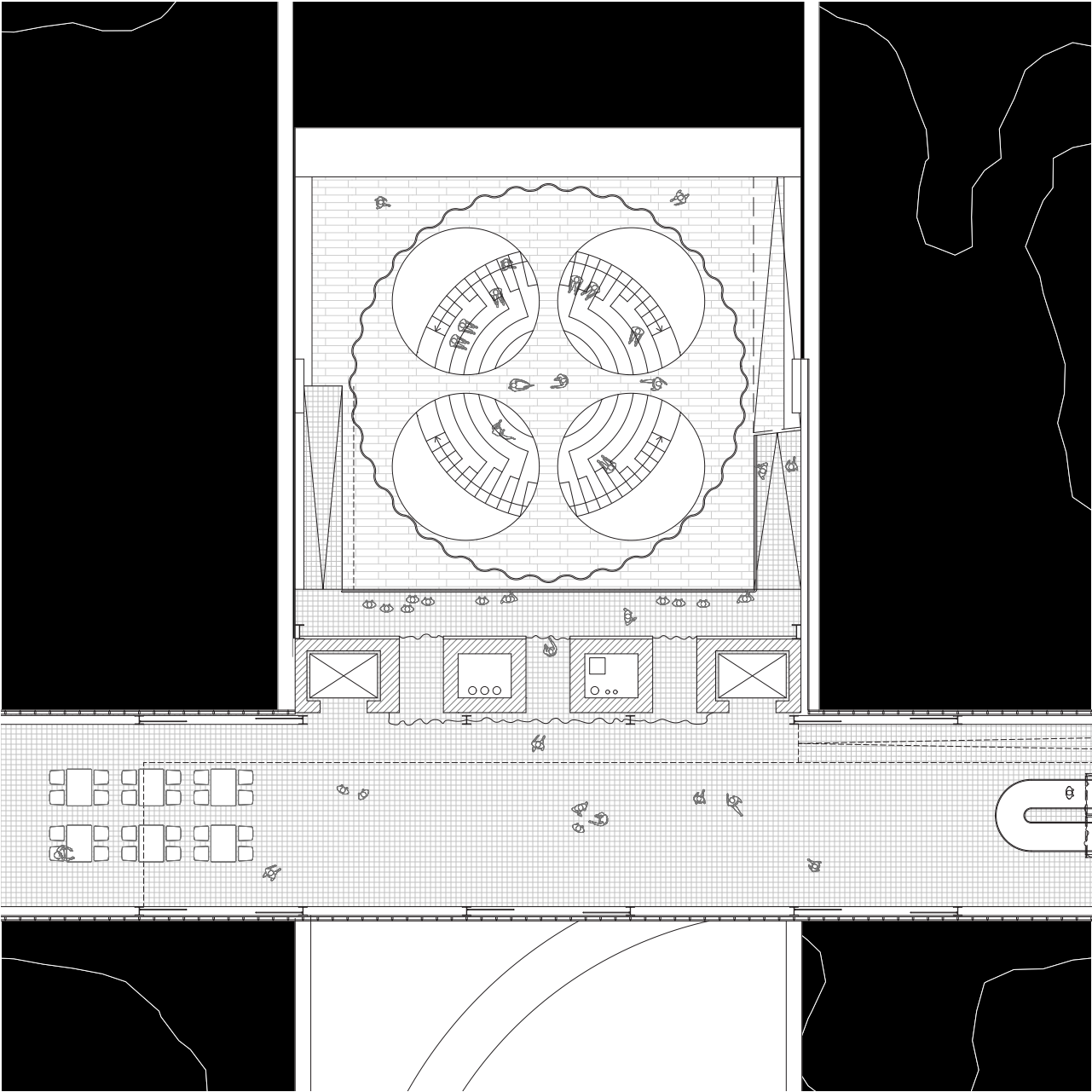


Detail 1:10: horizontal section façade

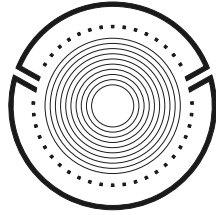
1. polycarbonate multi-web sheet, 40x550 mm U-val-
ue= 1.65 W/m²K
2. vertical battens
3. L-connector
4. steel C-section support for façade, screwed to
bearing structure, 5 mm
5. steel frame, main column, HEA 300
6. bracing
7. balustrade, vertical support
8. balustrade, metal cables
9. perforated metal decking

Act II

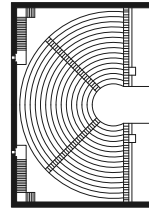
Exploring



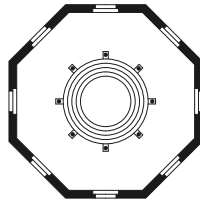
The Space of the Representation



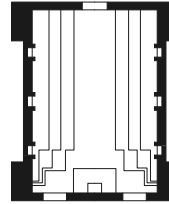
Poseidonia, Ekklesiasteria



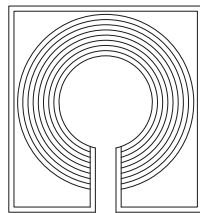
Mileto, Bouleuterion



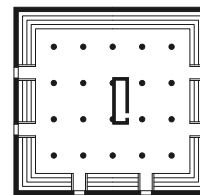
Rome, Baptistery of
Constantine



Rome, Curia Iulia



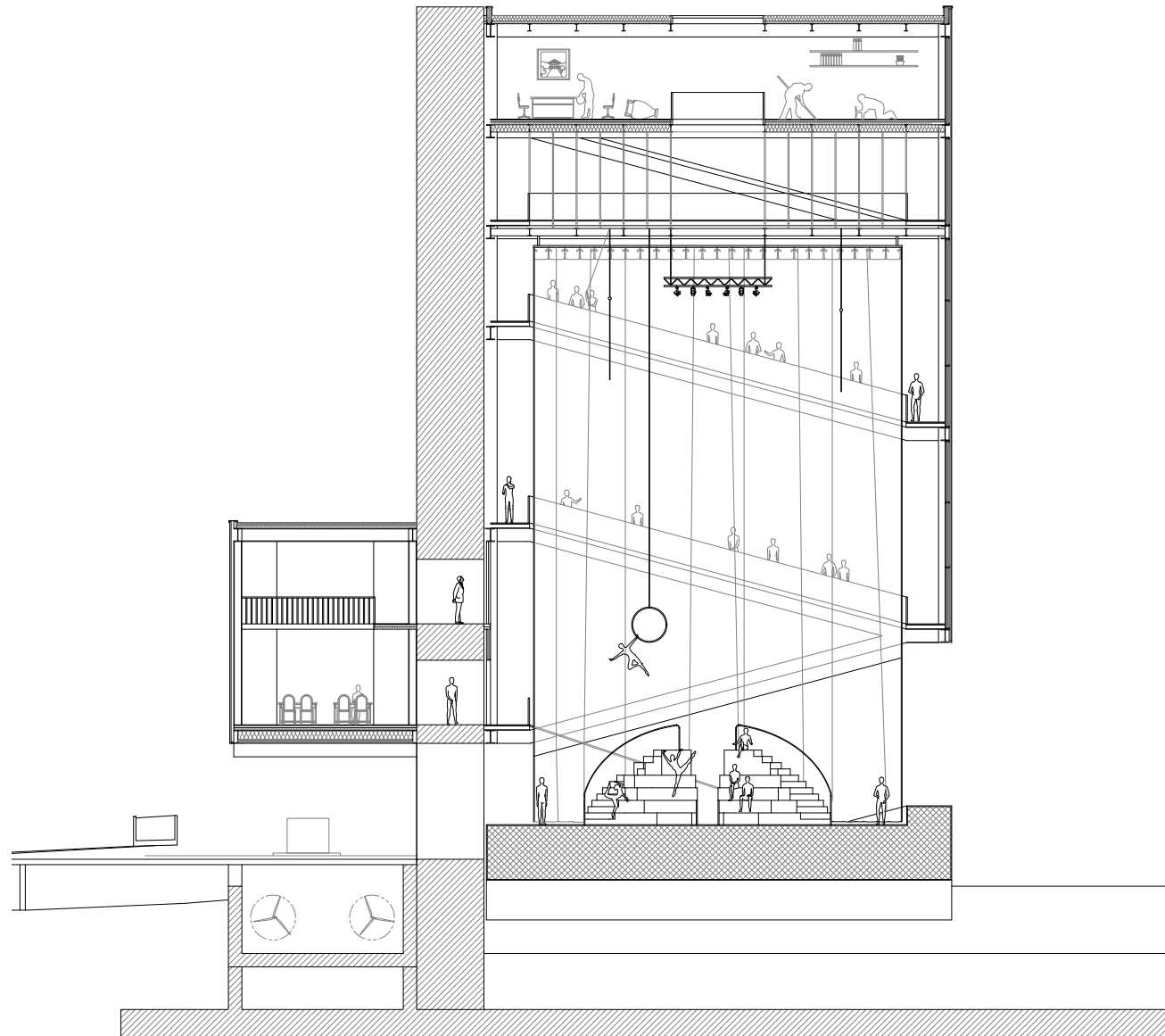
Cossa, Comitium

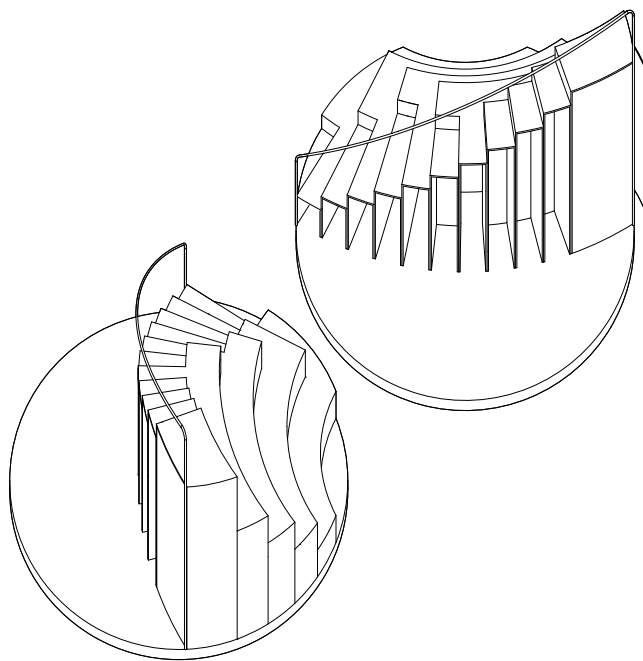


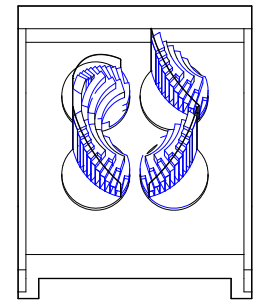
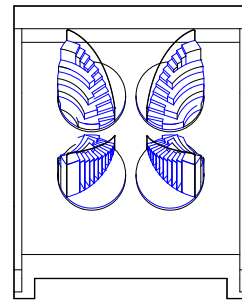
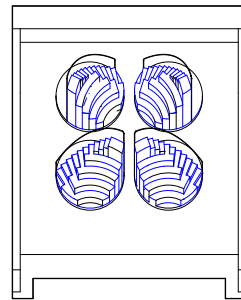
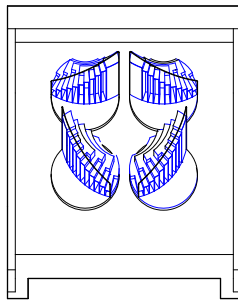
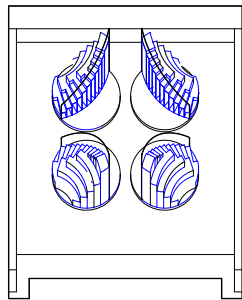
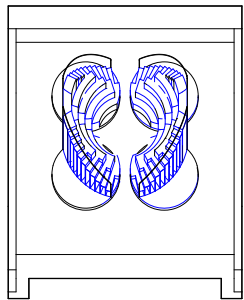
Eleusi, Telesterium

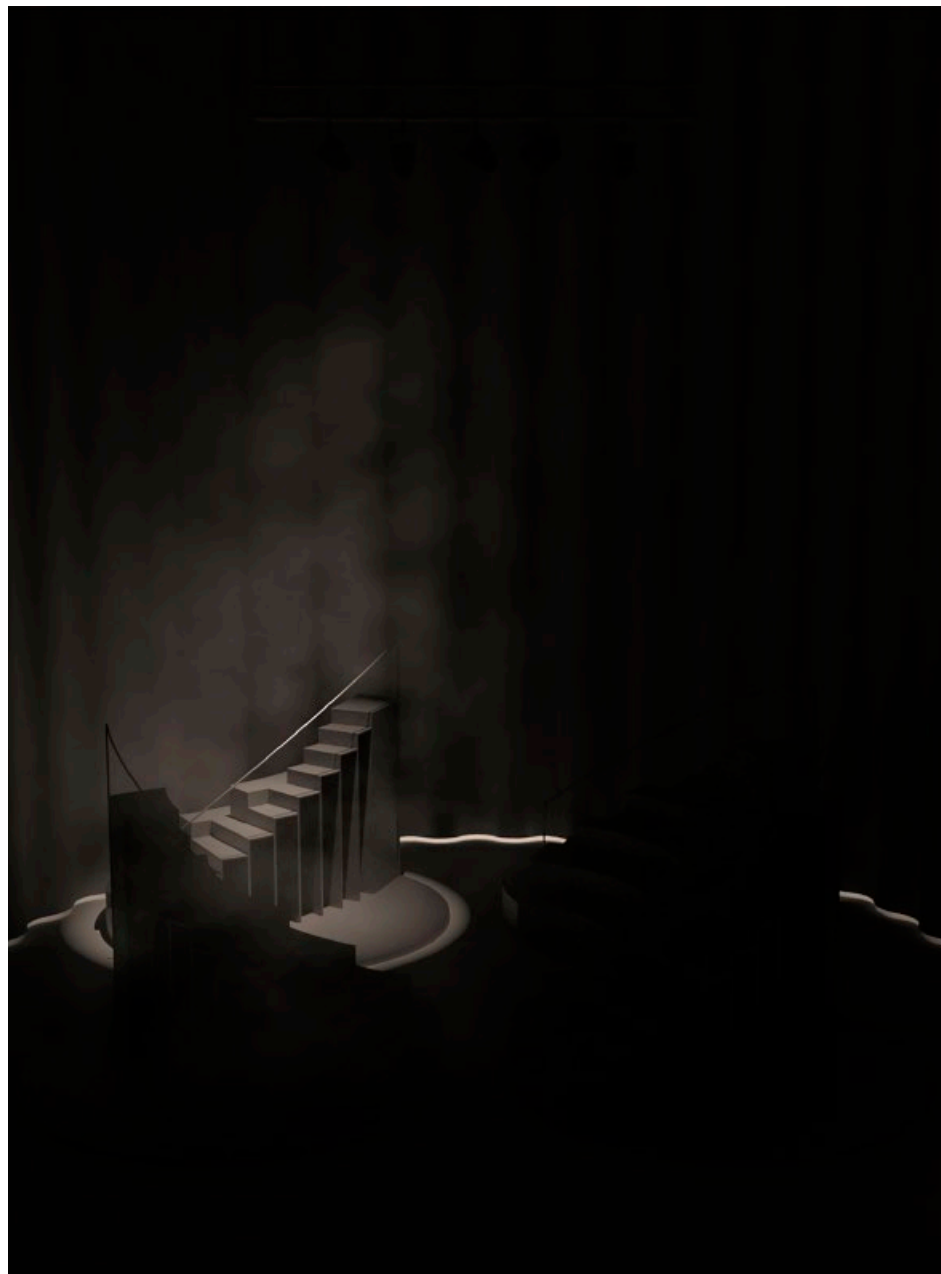


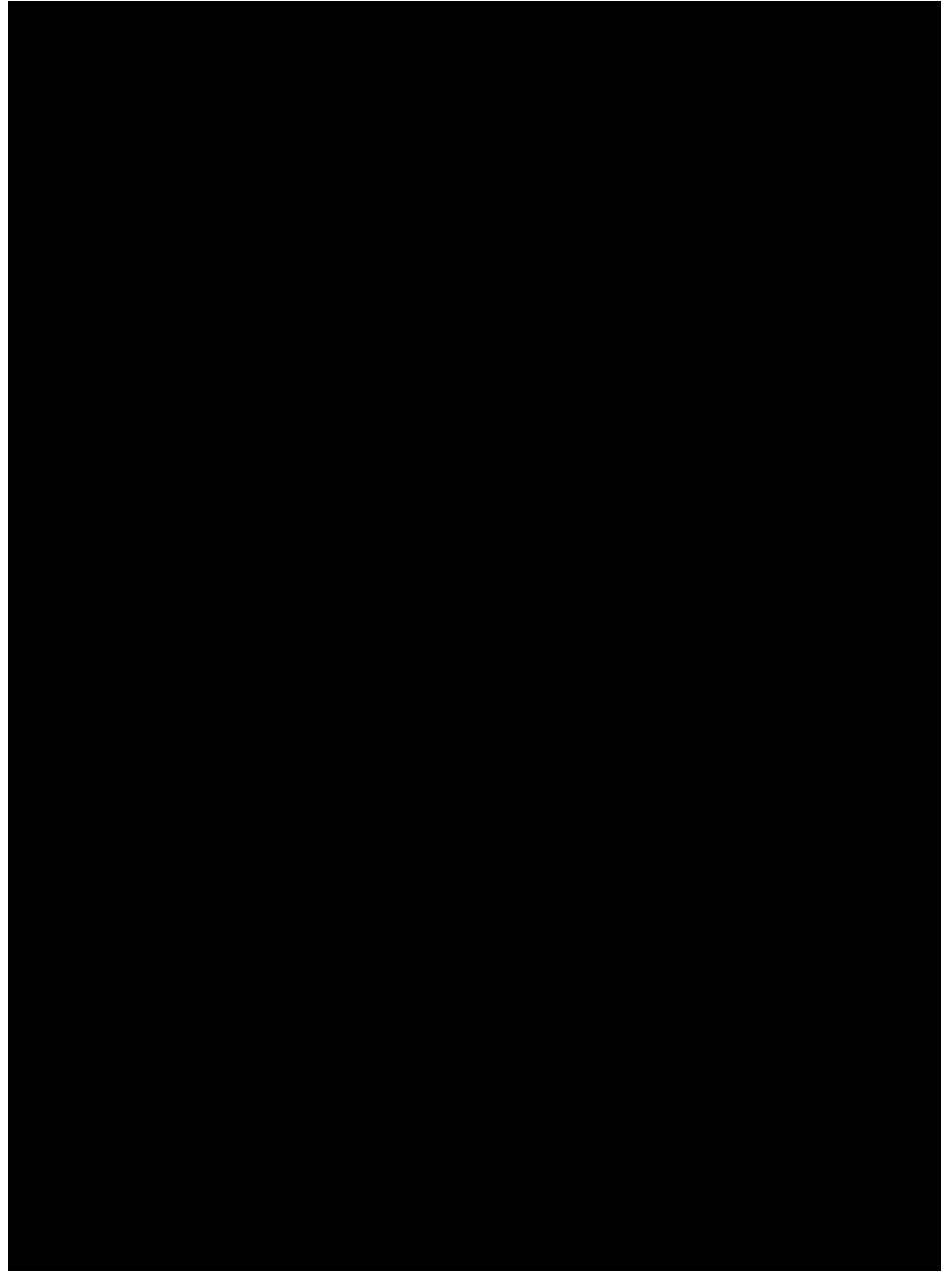
Tower

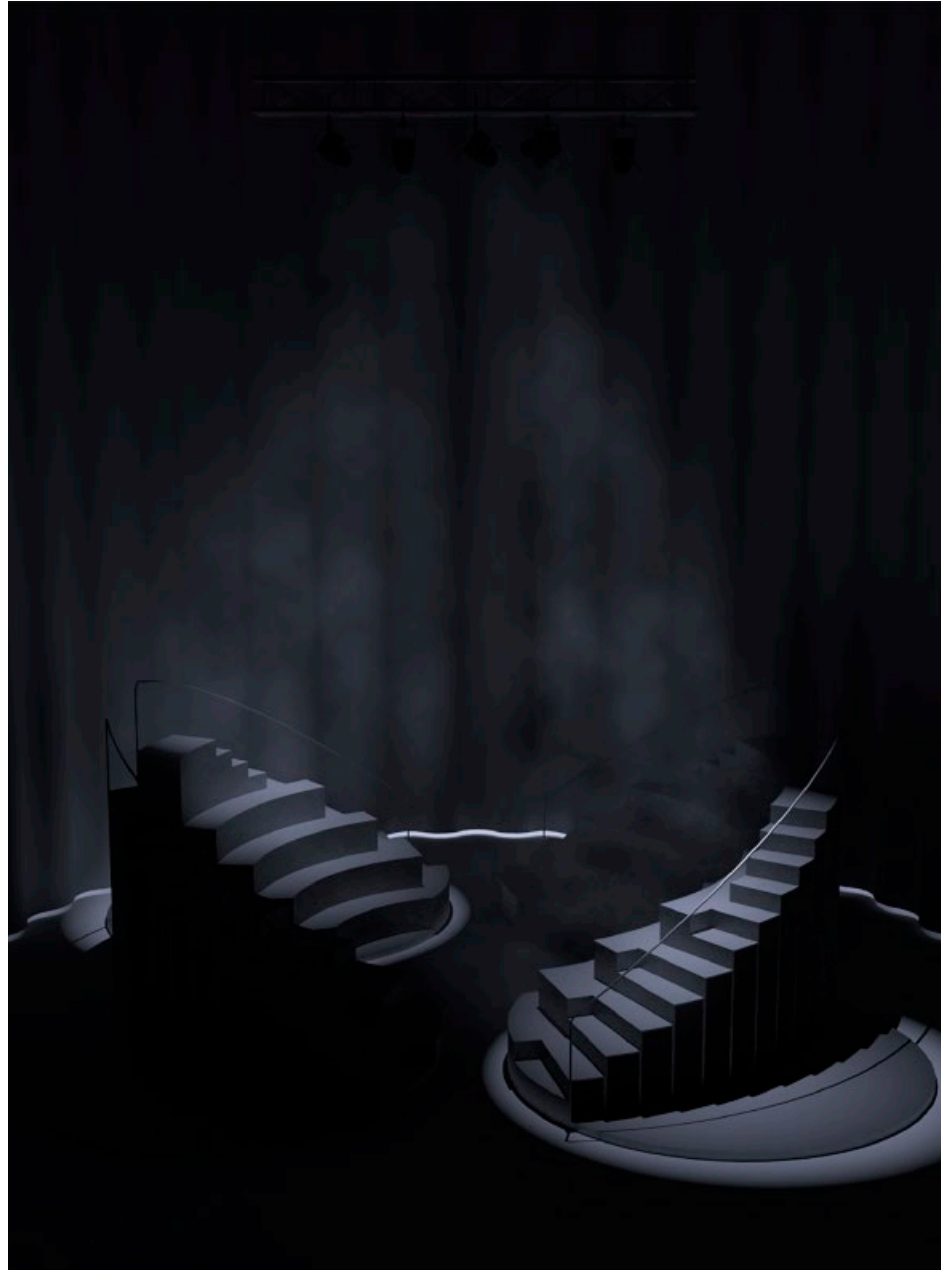


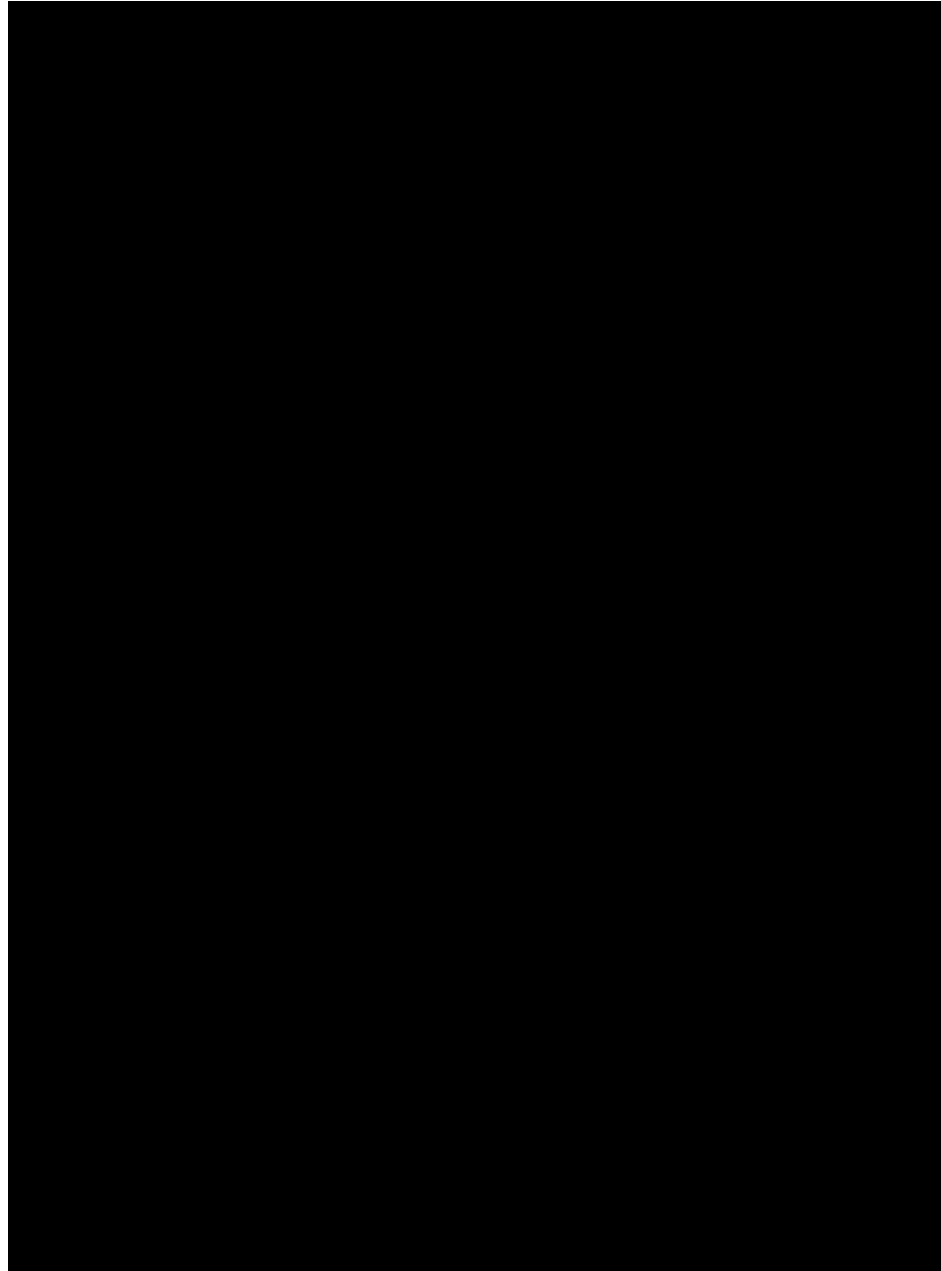


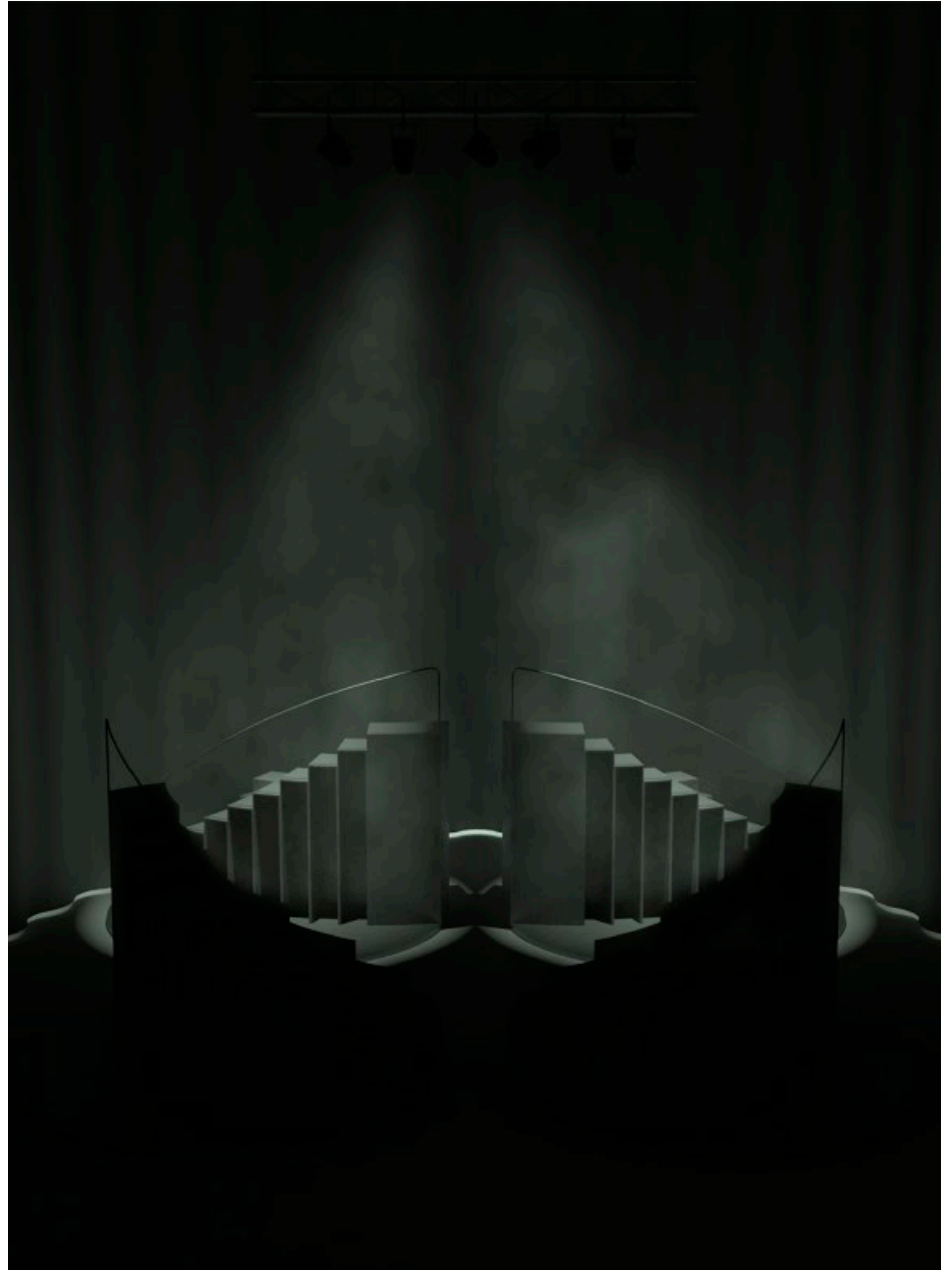


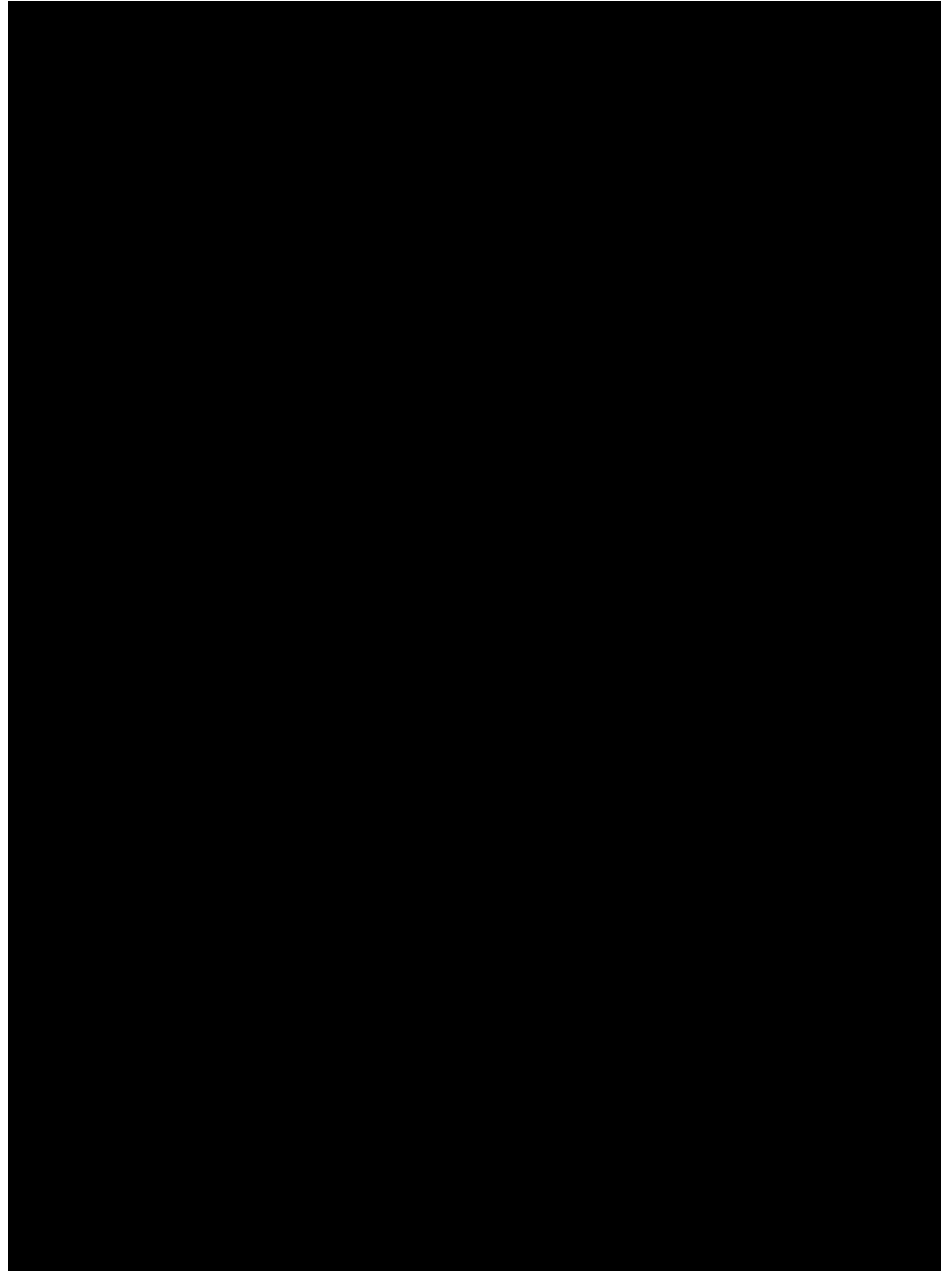




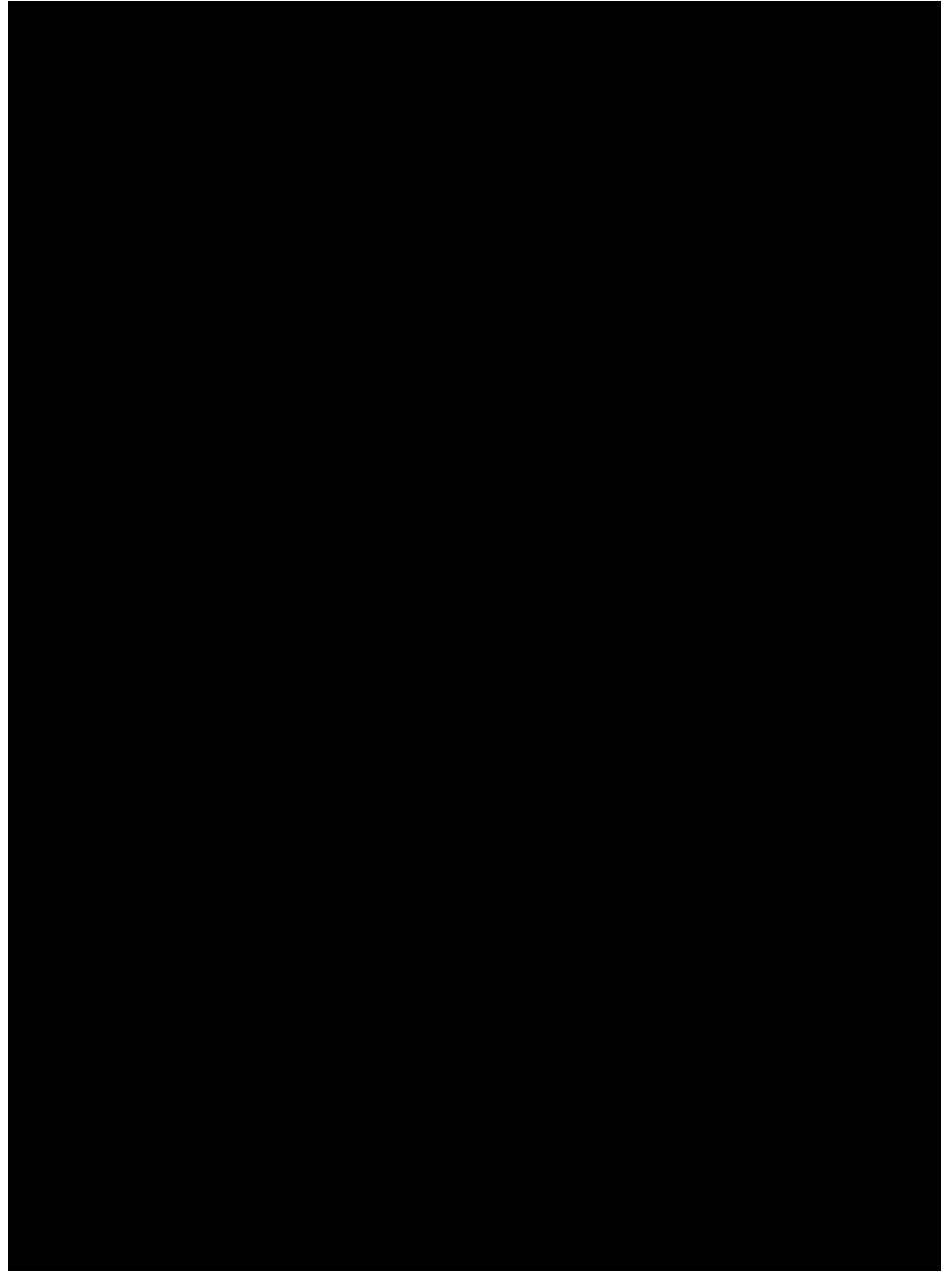


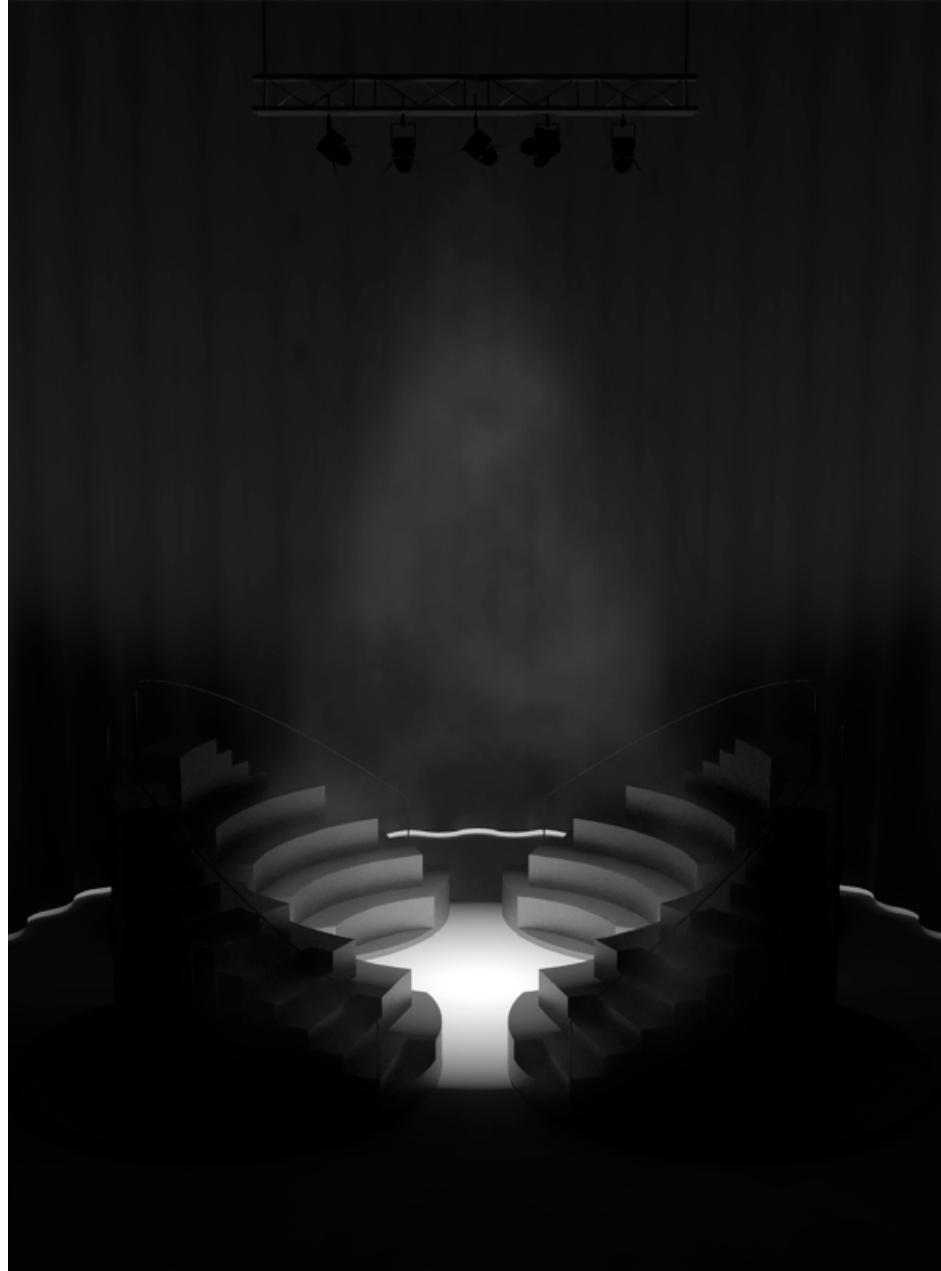


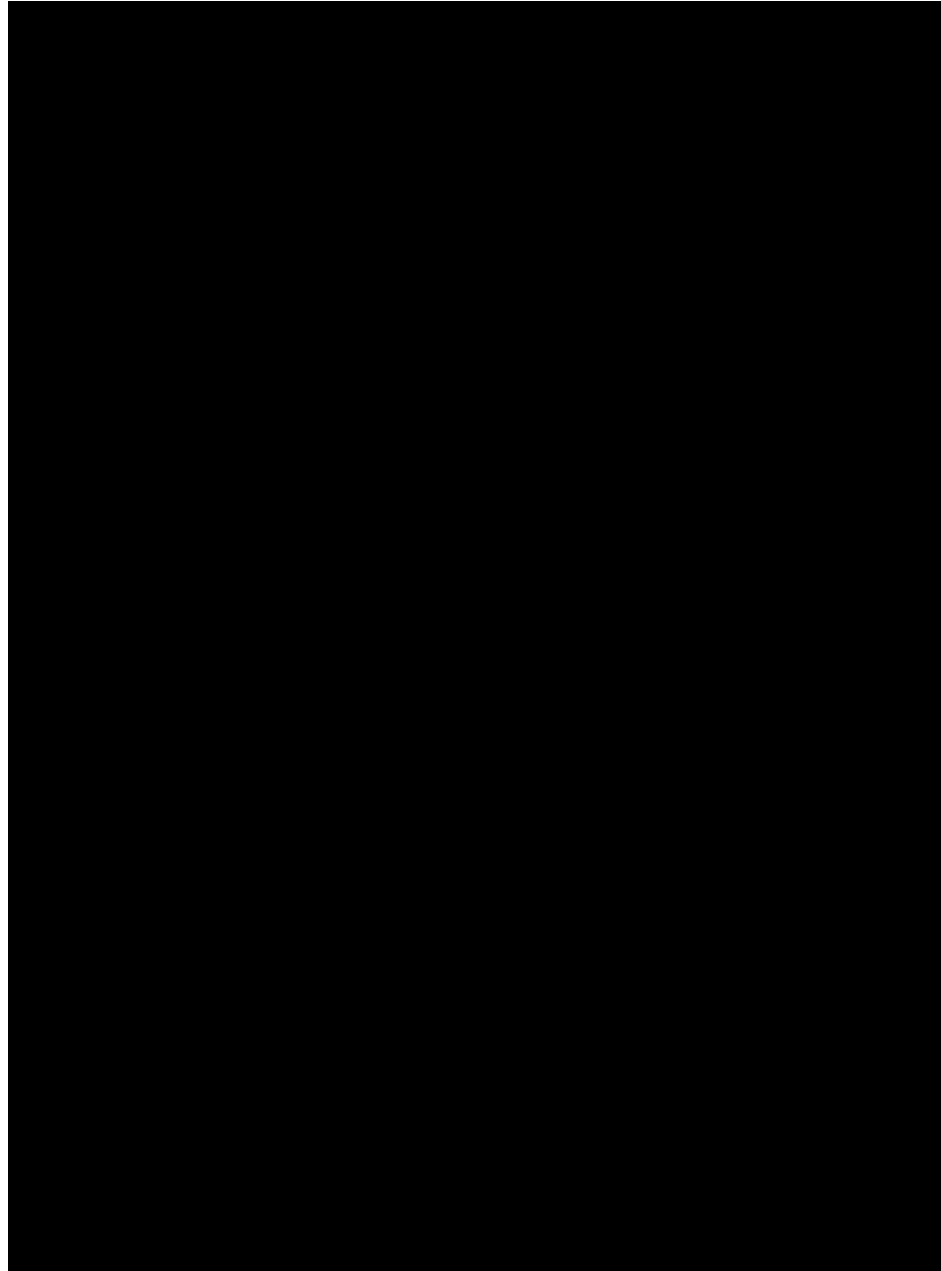


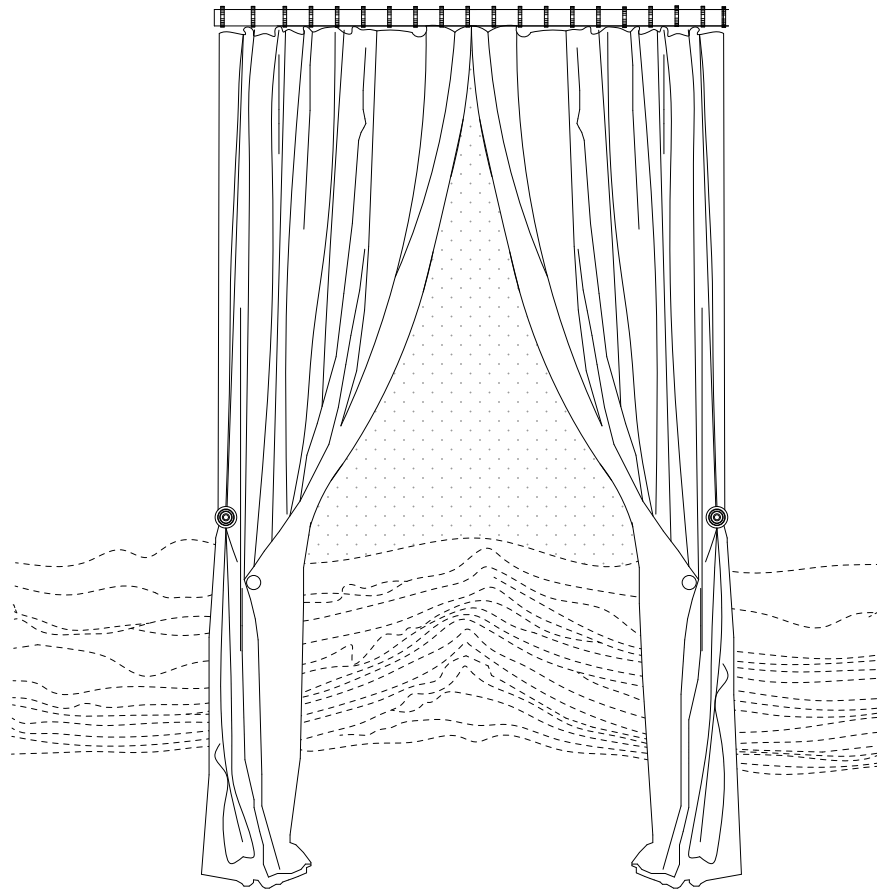


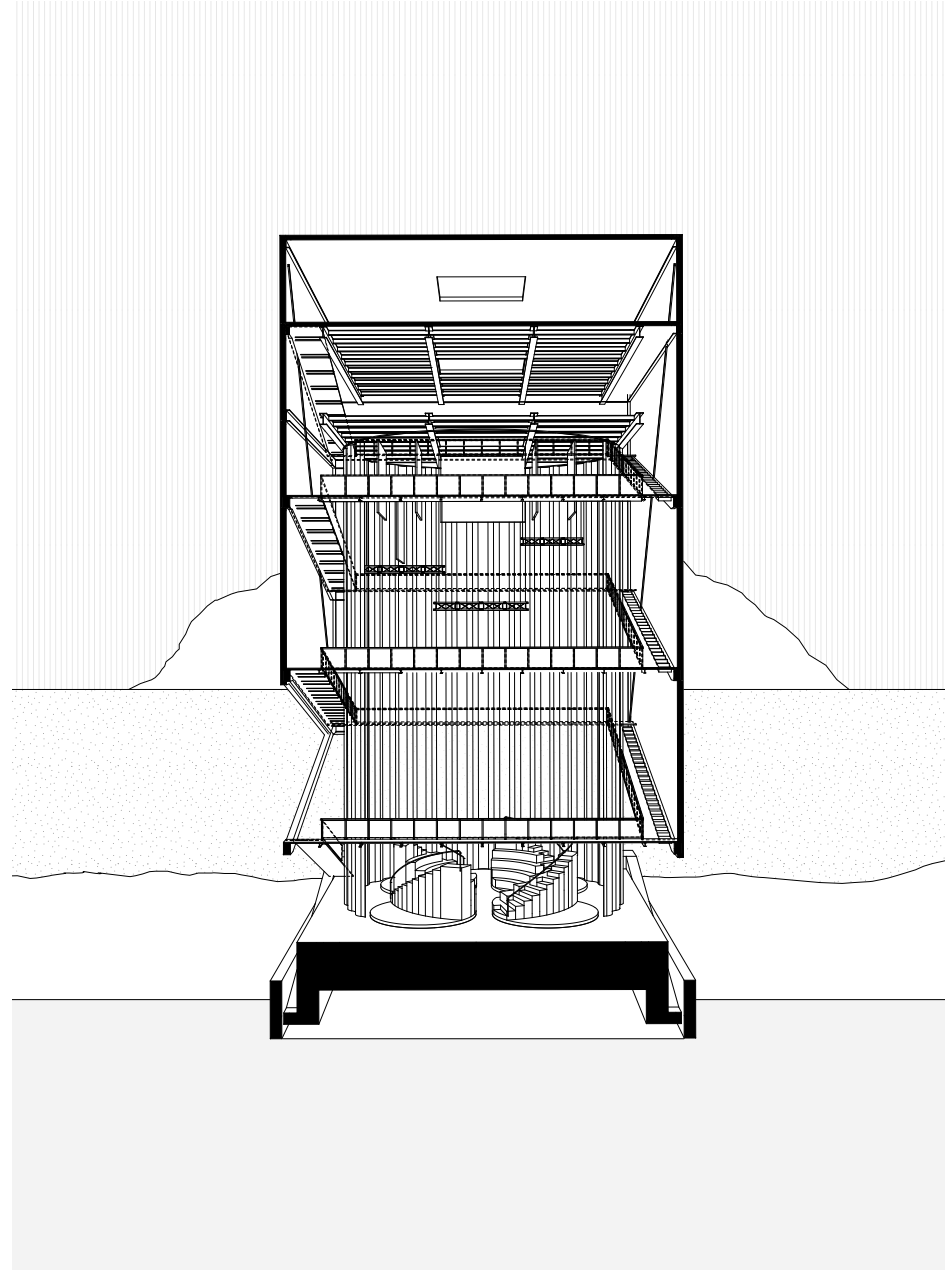


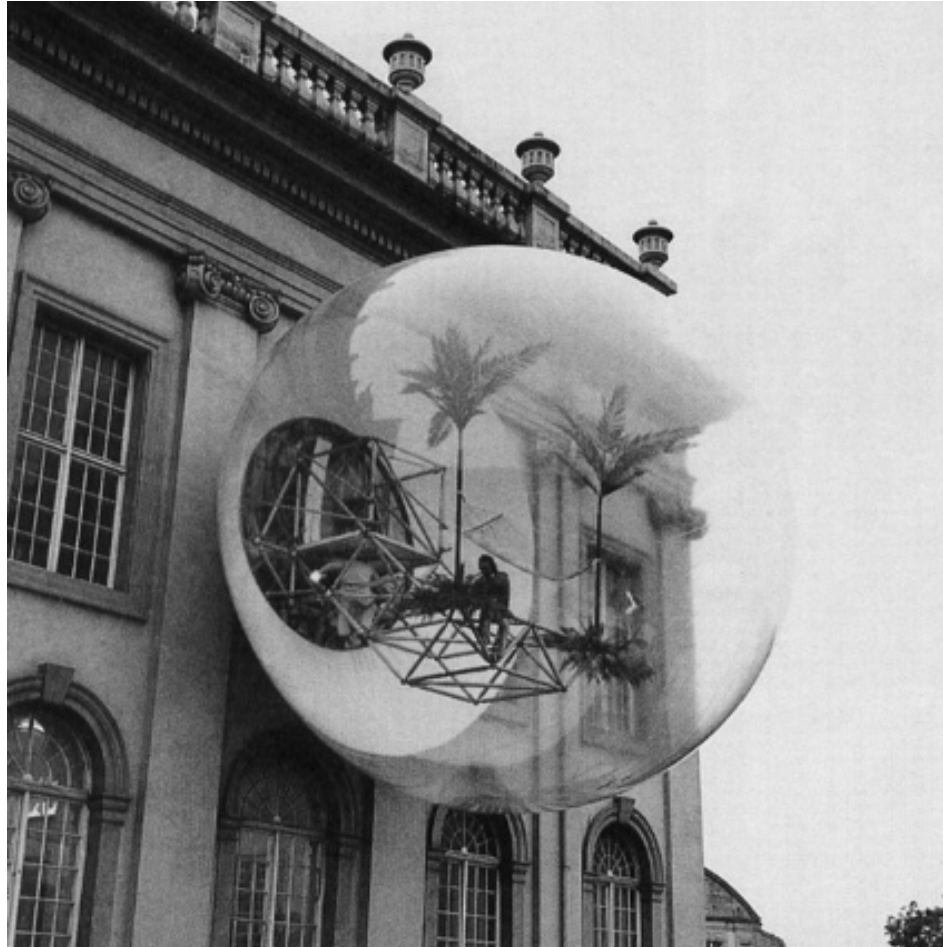


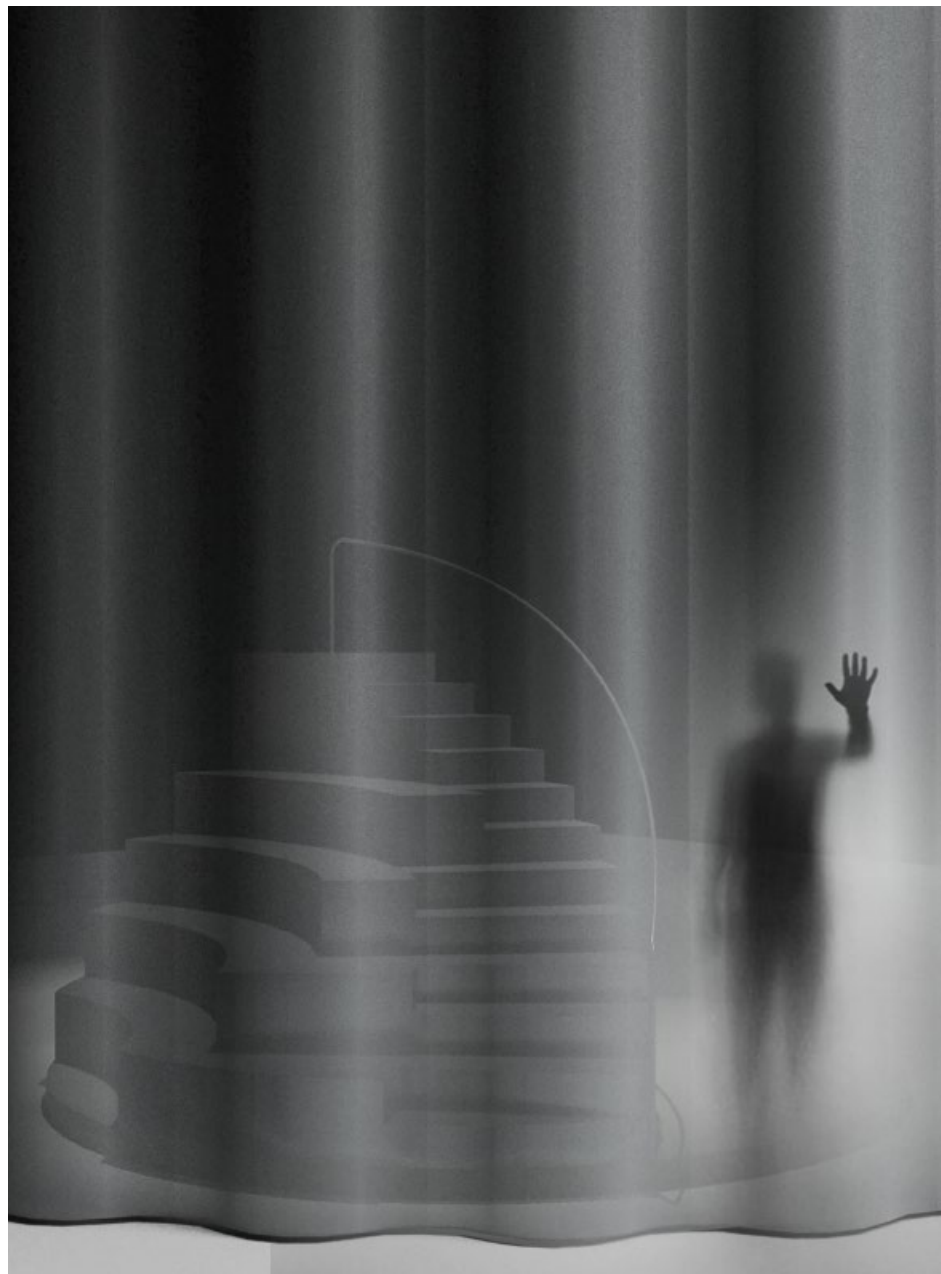


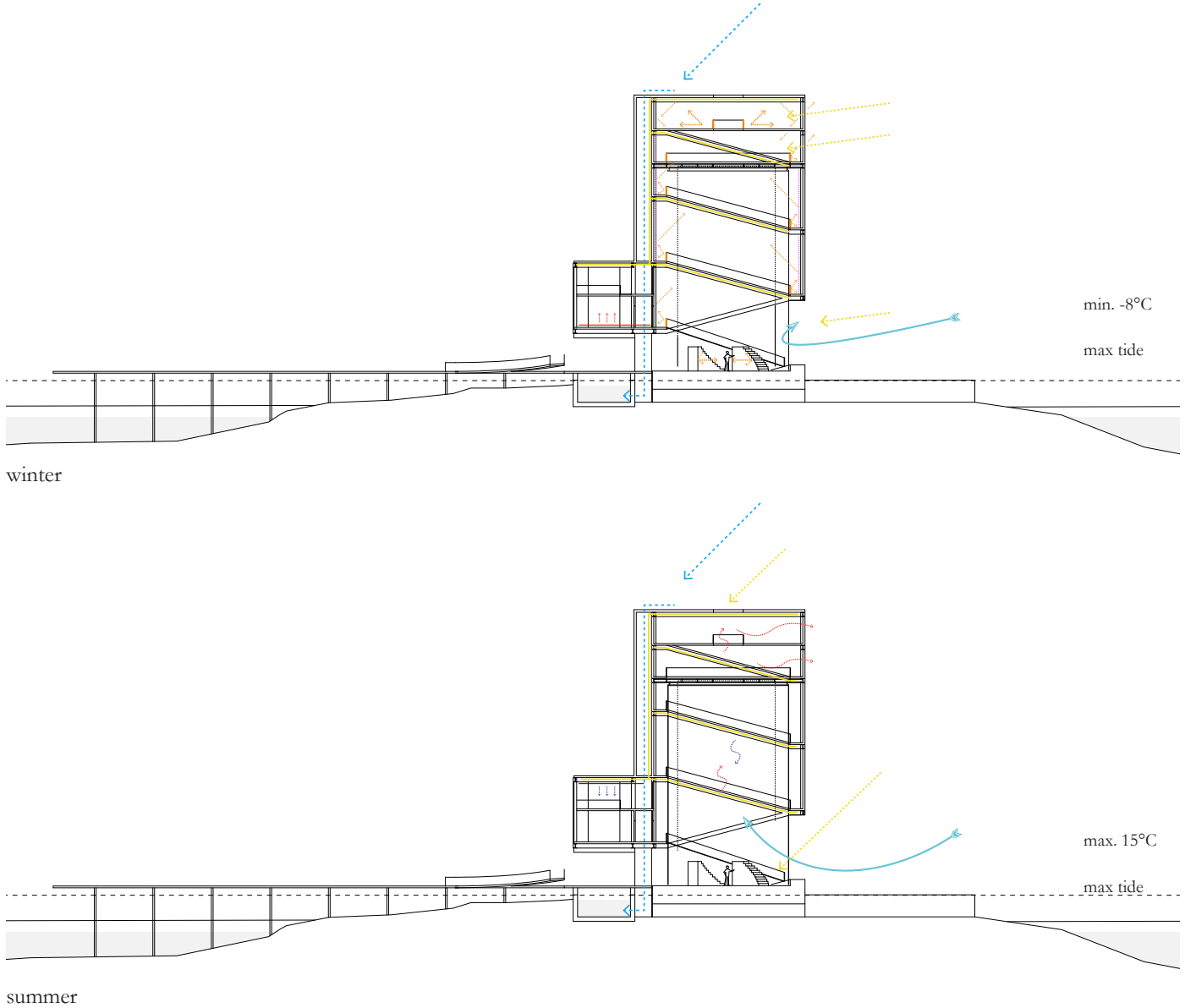




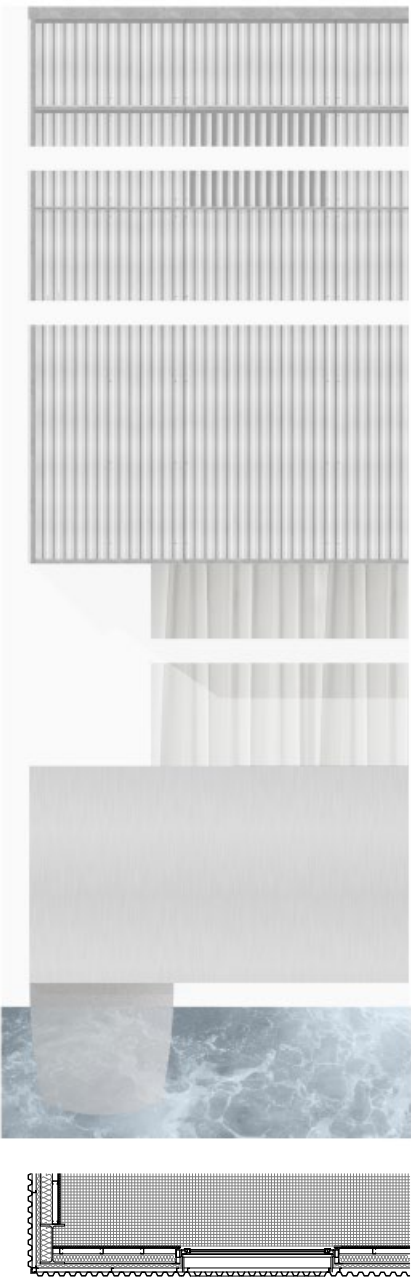
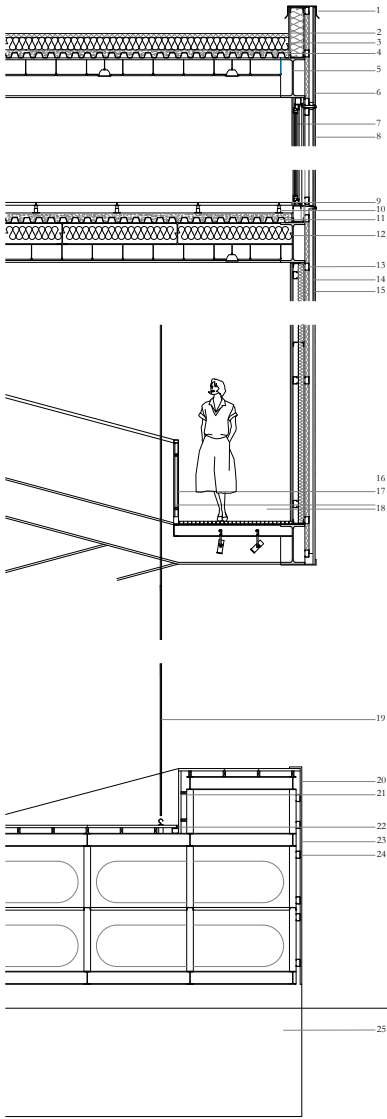




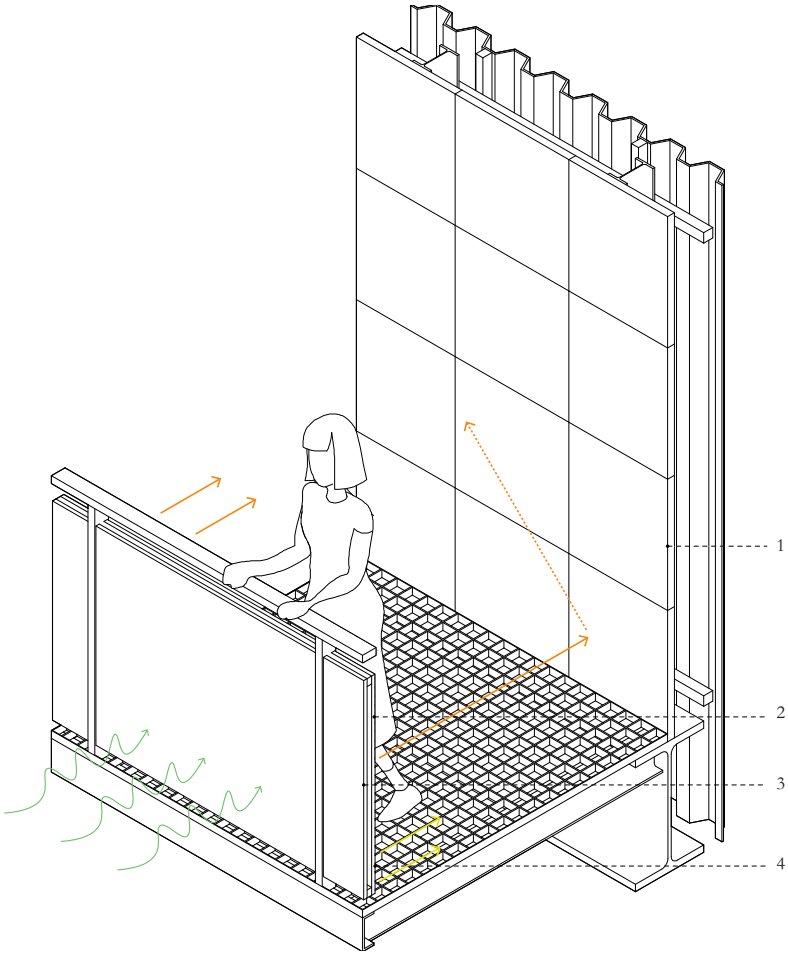




- | | | | | |
|----------------|---------------------------|-----------------------------------|-----------------|--------------------------|
| 1. Transformer | 4. Turbines | 7. Pre-heating unit | — Electricity | - - - Cold air |
| 2. Converter | 5. Waterpump | 8. Heat exchanger for ventilation | - - - Rainwater | — Radiator |
| 3. Batteries | 6. Water-source heat pump | - - - Sunlight | - - - Warm air | - - - Infrared radiation |

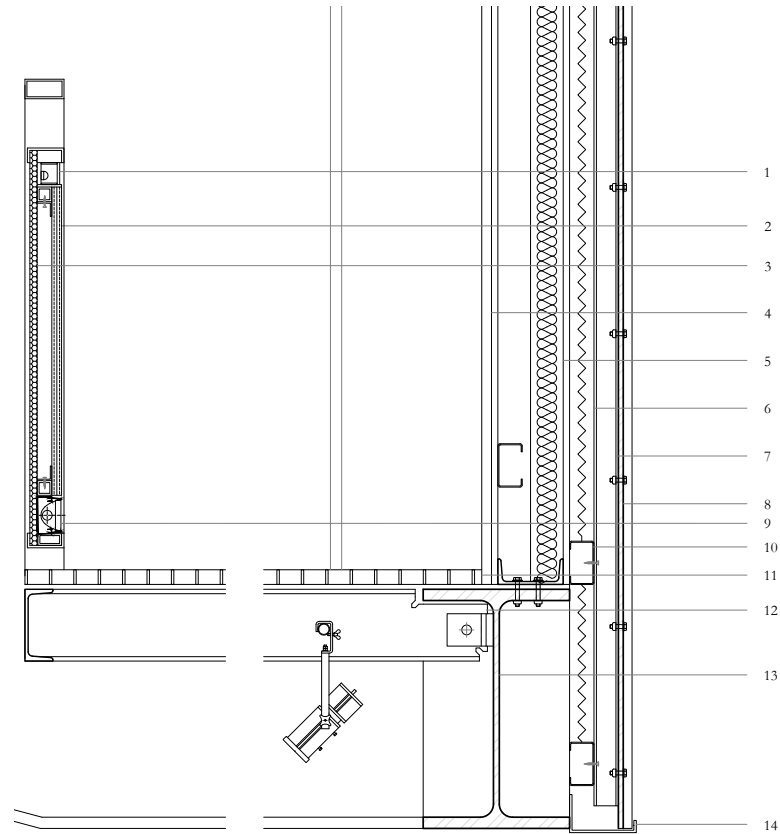


Performing outdoor

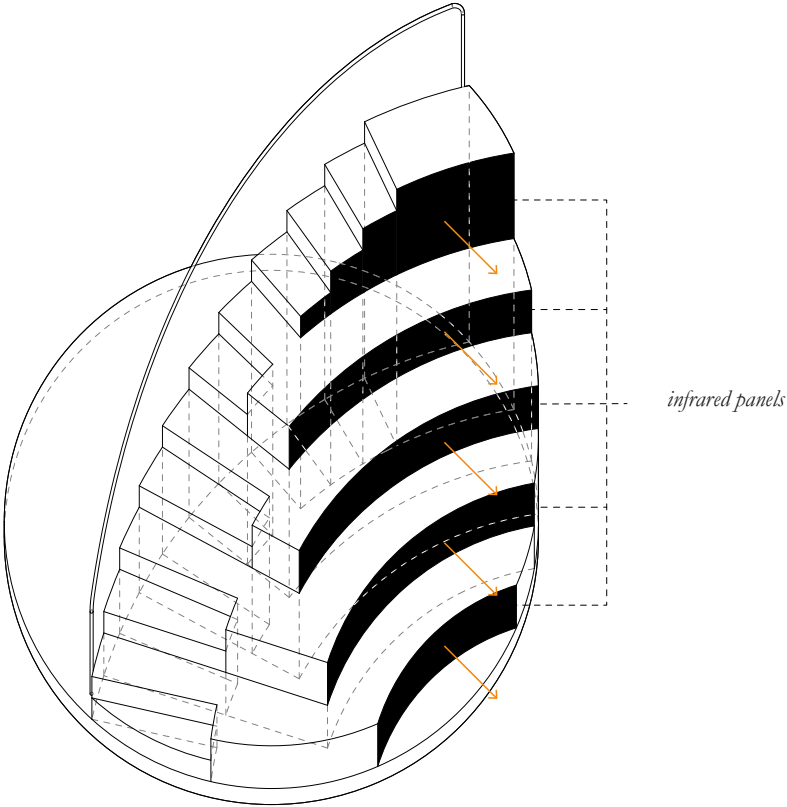


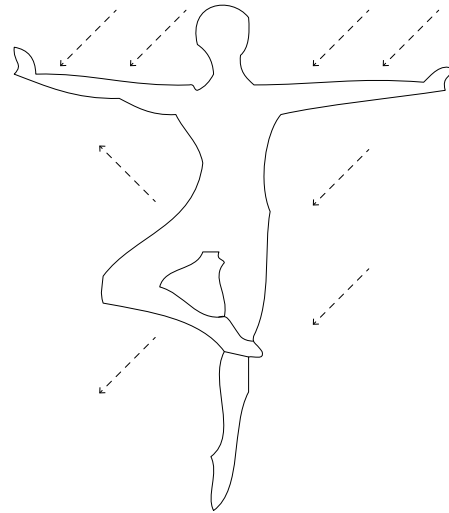
- 1. metal interior cladding, reflecting radiation
 - 2. infrared panel
 - 3. white acoustic panel
 - 4. service lights for balconies
- noise
 - infrared emission
 - - - infrared reflection
 - light

Performing outdoor

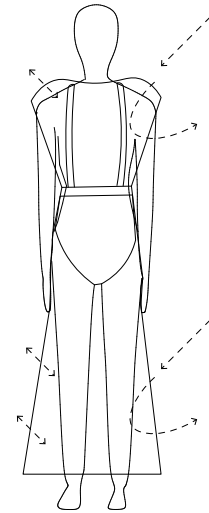


1. hue motion sensor for infrared panel
2. infrared radiating panel 20 mm
3. acoustic panel for sound absorption, metal frame,
4. internal metal cladding
5. 70 mm thermal insulation
6. 50 mm rigid thermal insulating panels
7. steel S-section, vertical battens
8. corrugated metal cladding, 2.8 mm
9. service light
10. steel C-section support for façade, screwed to bearing structure, 5 mm
11. perforated steel deck
12. secondary beam, IPE 14, supporting balconies
13. steel frame, main beam, HEA 500
14. flashing



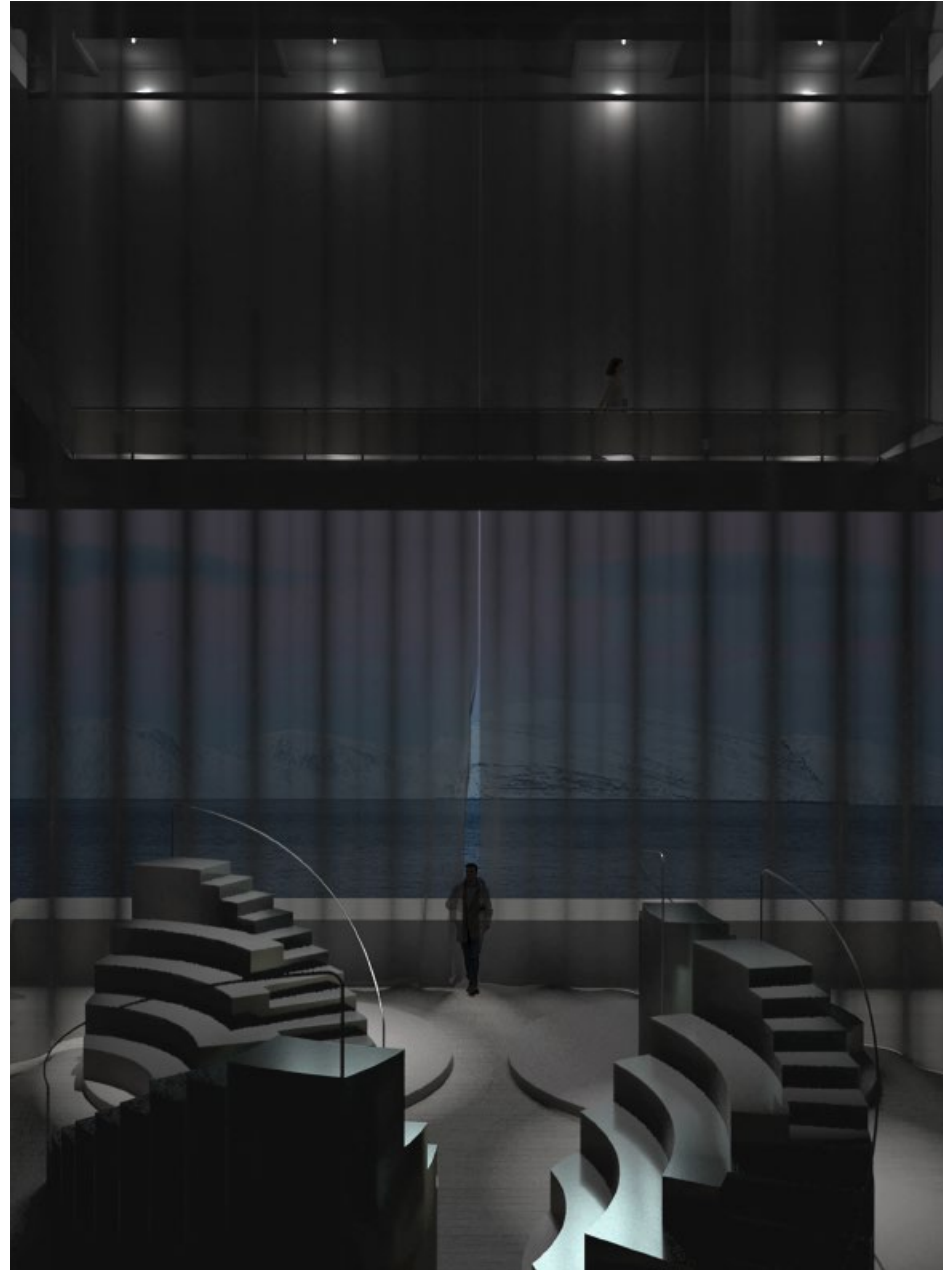


maximum exposure to radiation
while acting



radiation control
while watching

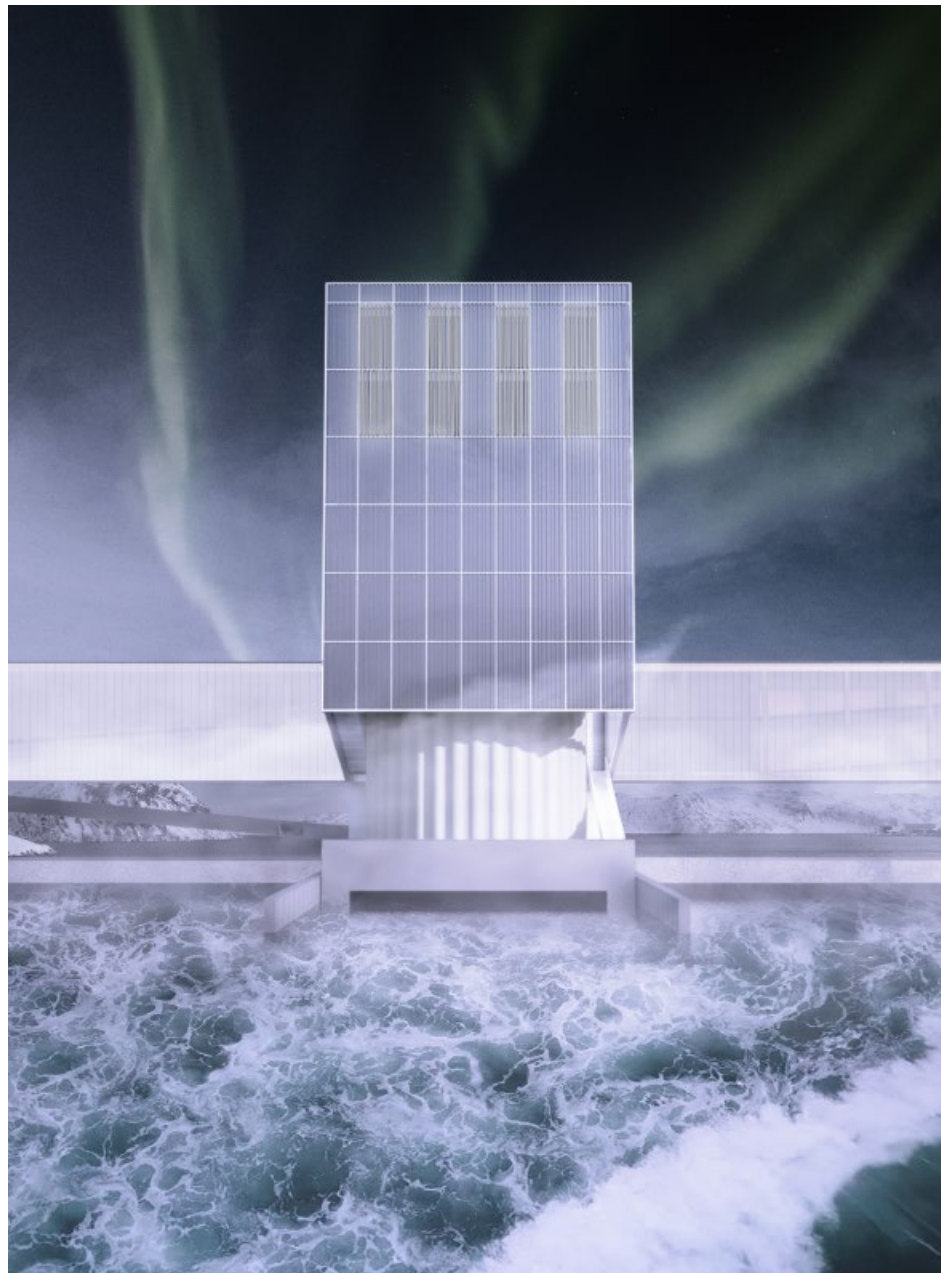




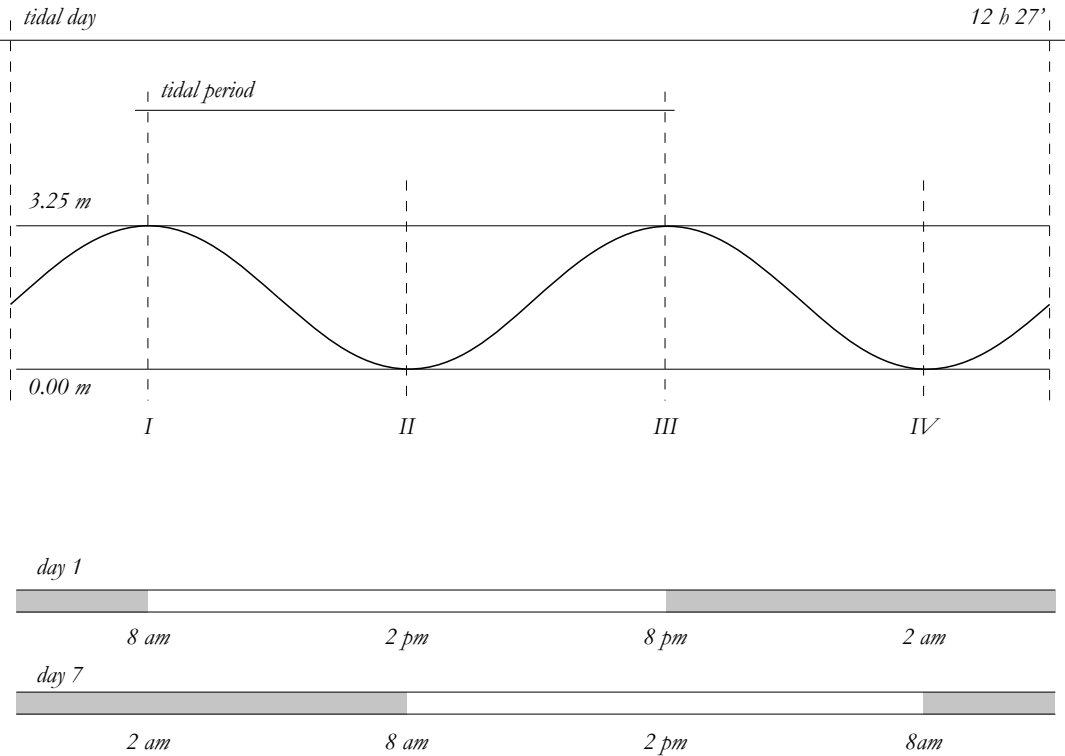
Act III

According Harmonies

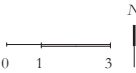
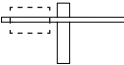
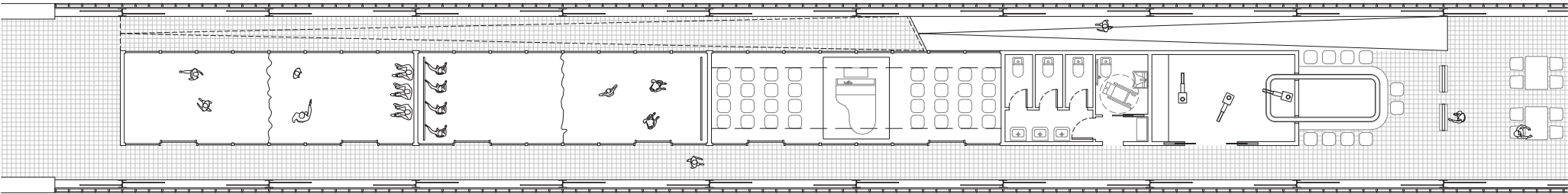




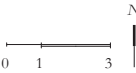
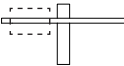
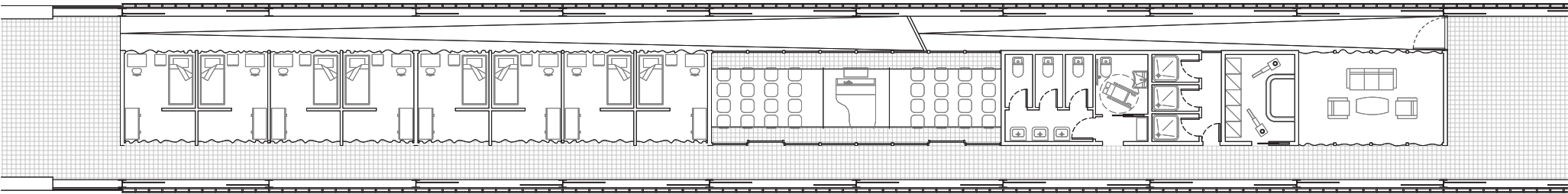
Tidal cycles



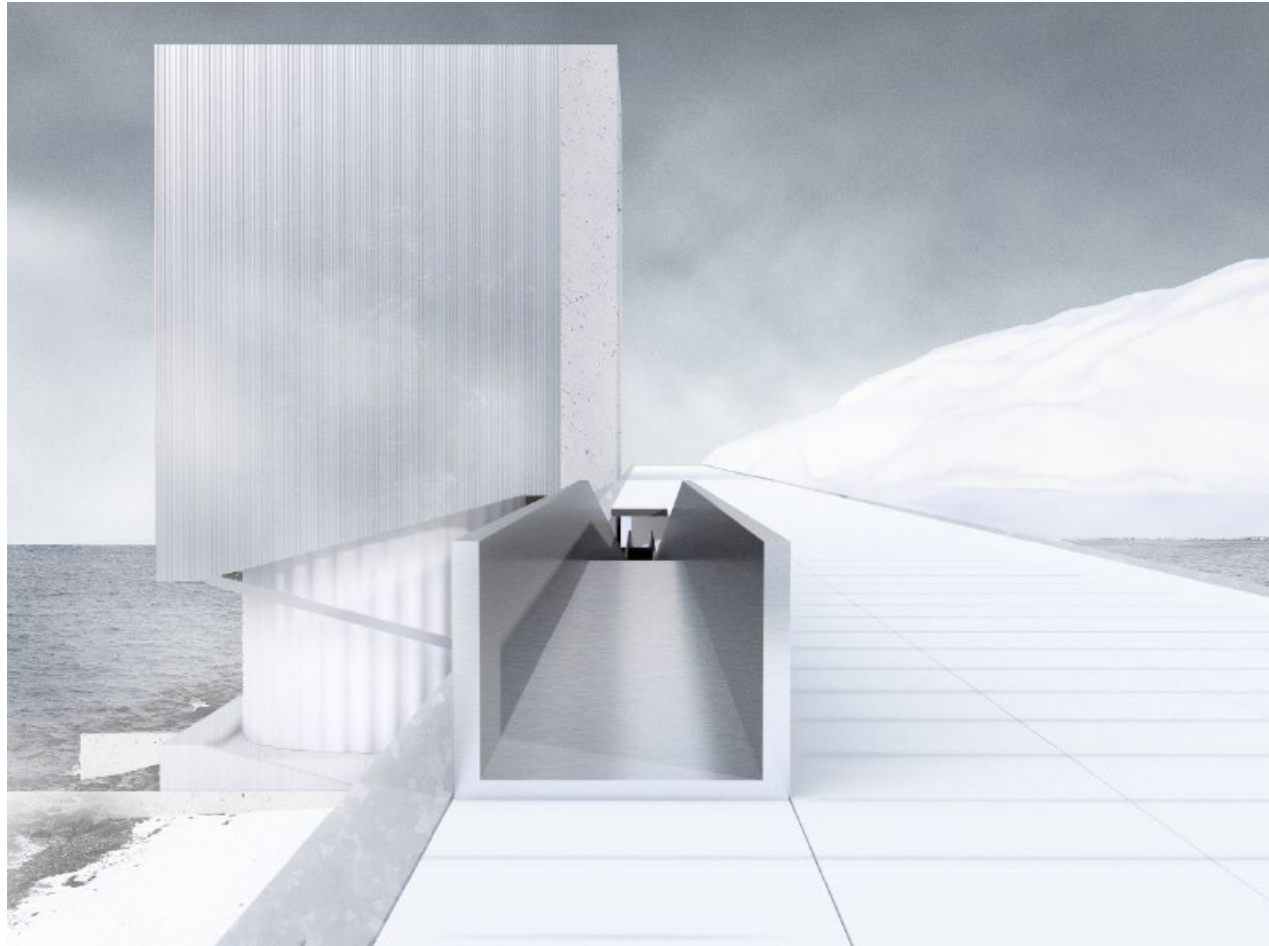
Rehearsal rooms

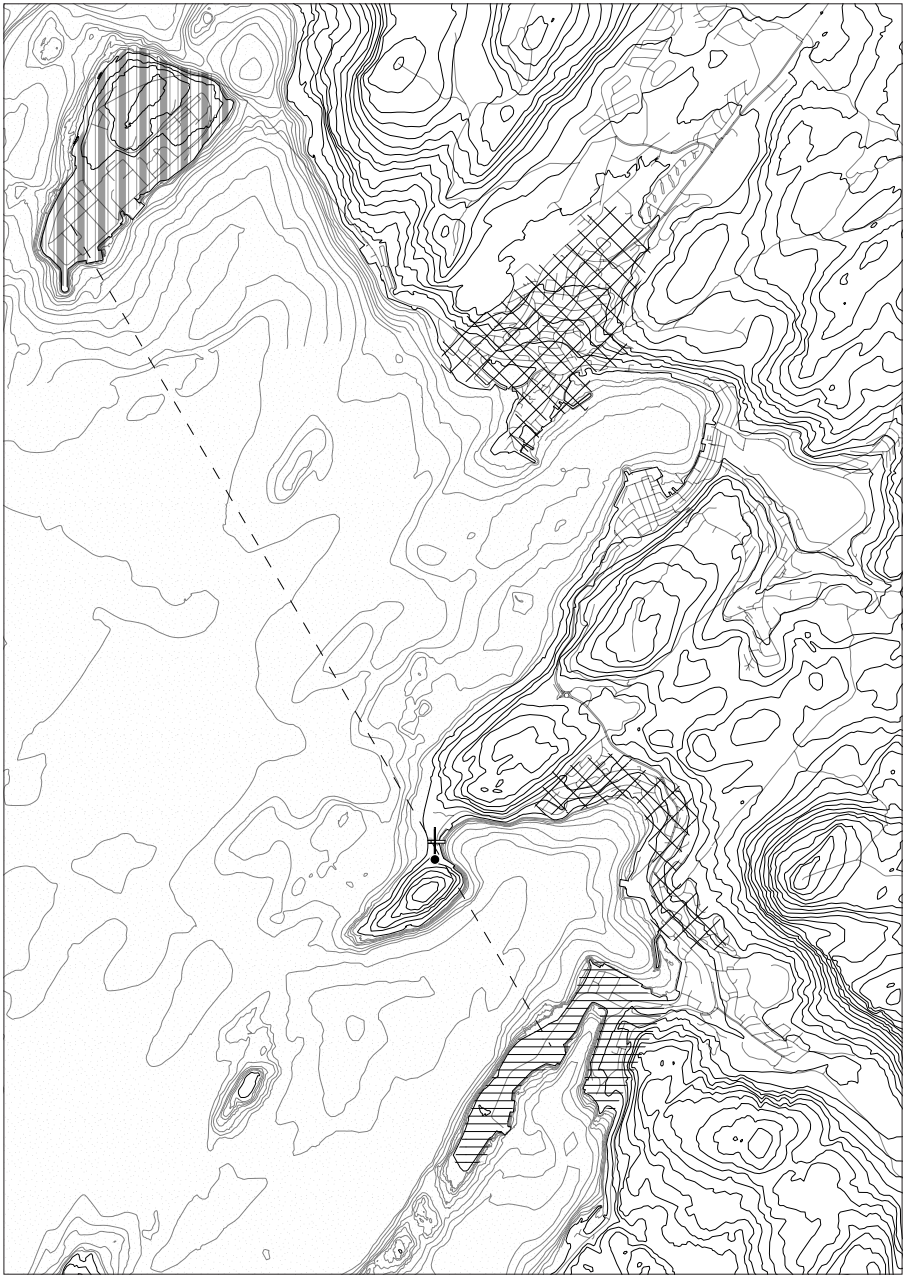


Accommodation









Epilogue

A Performative Exodus



