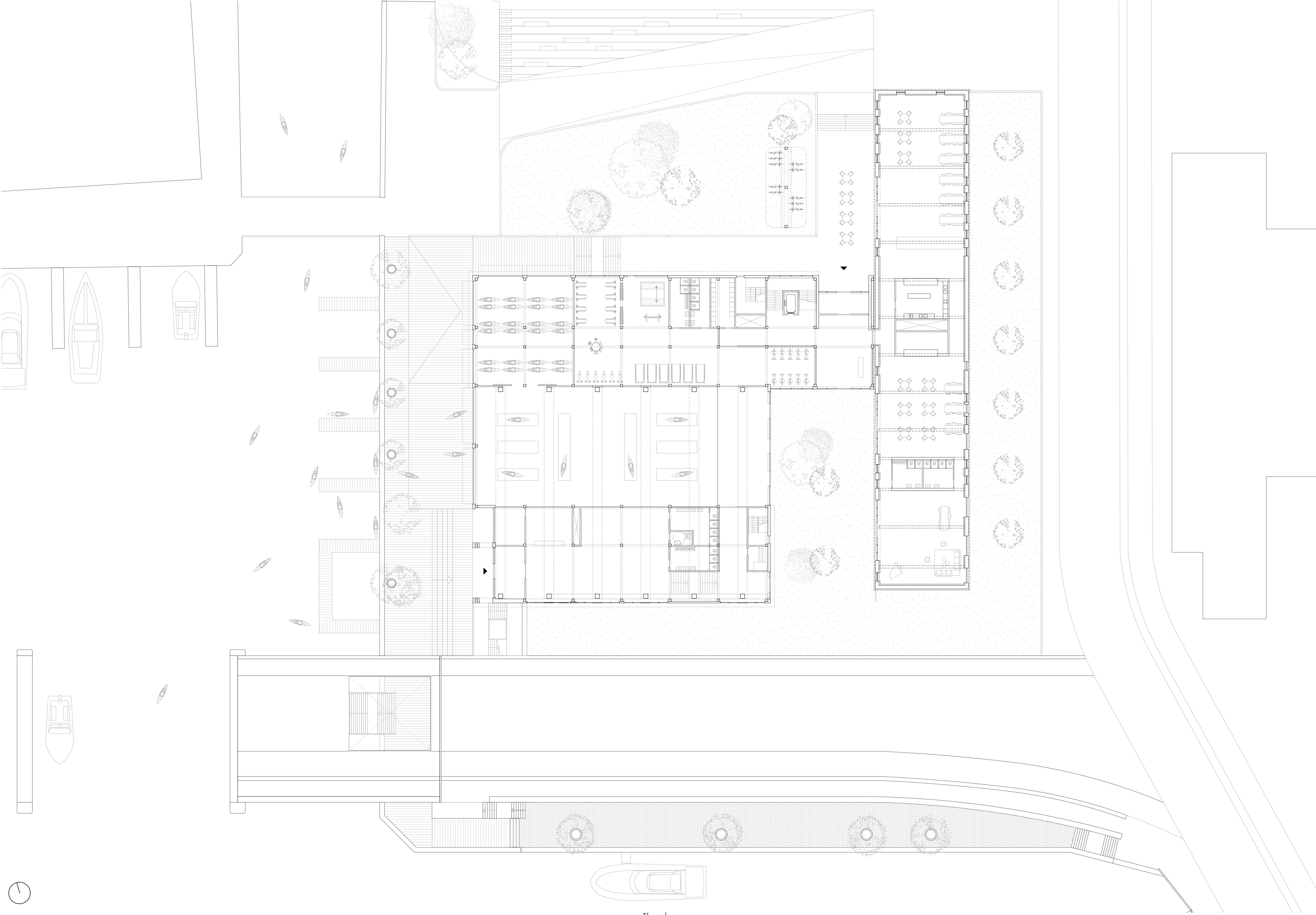
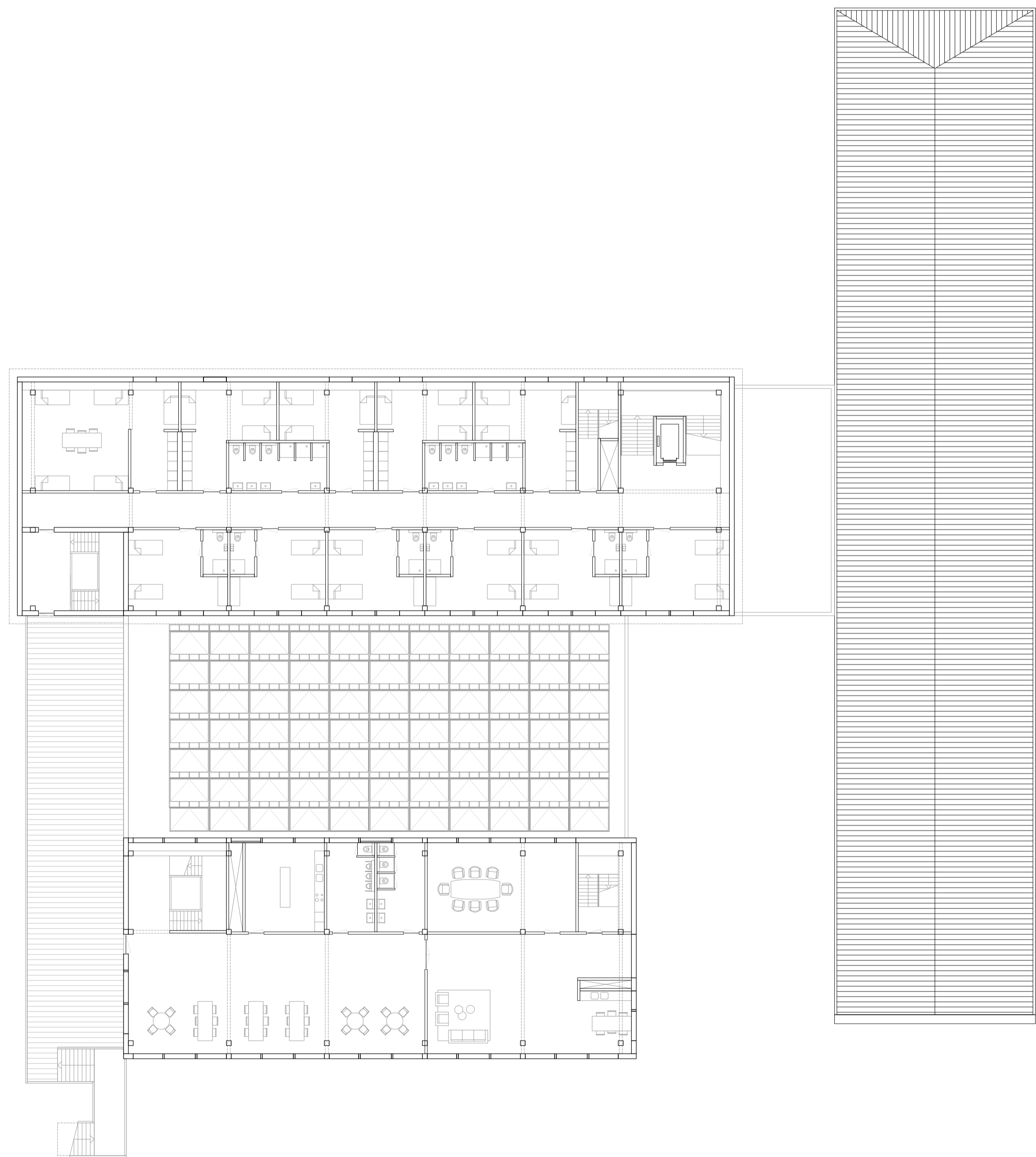
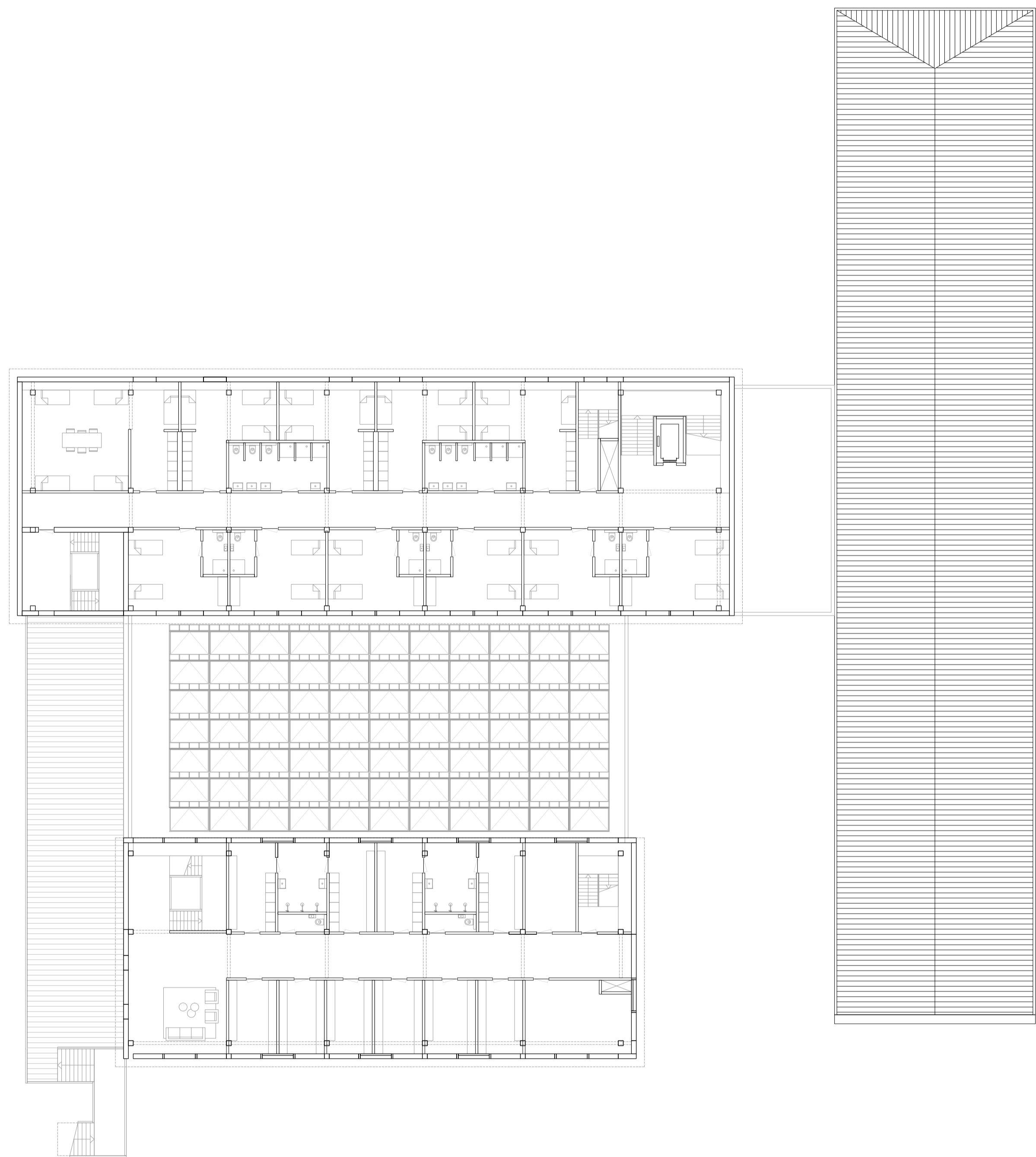


Floorplan
Ground Floor (+1090)
1:200

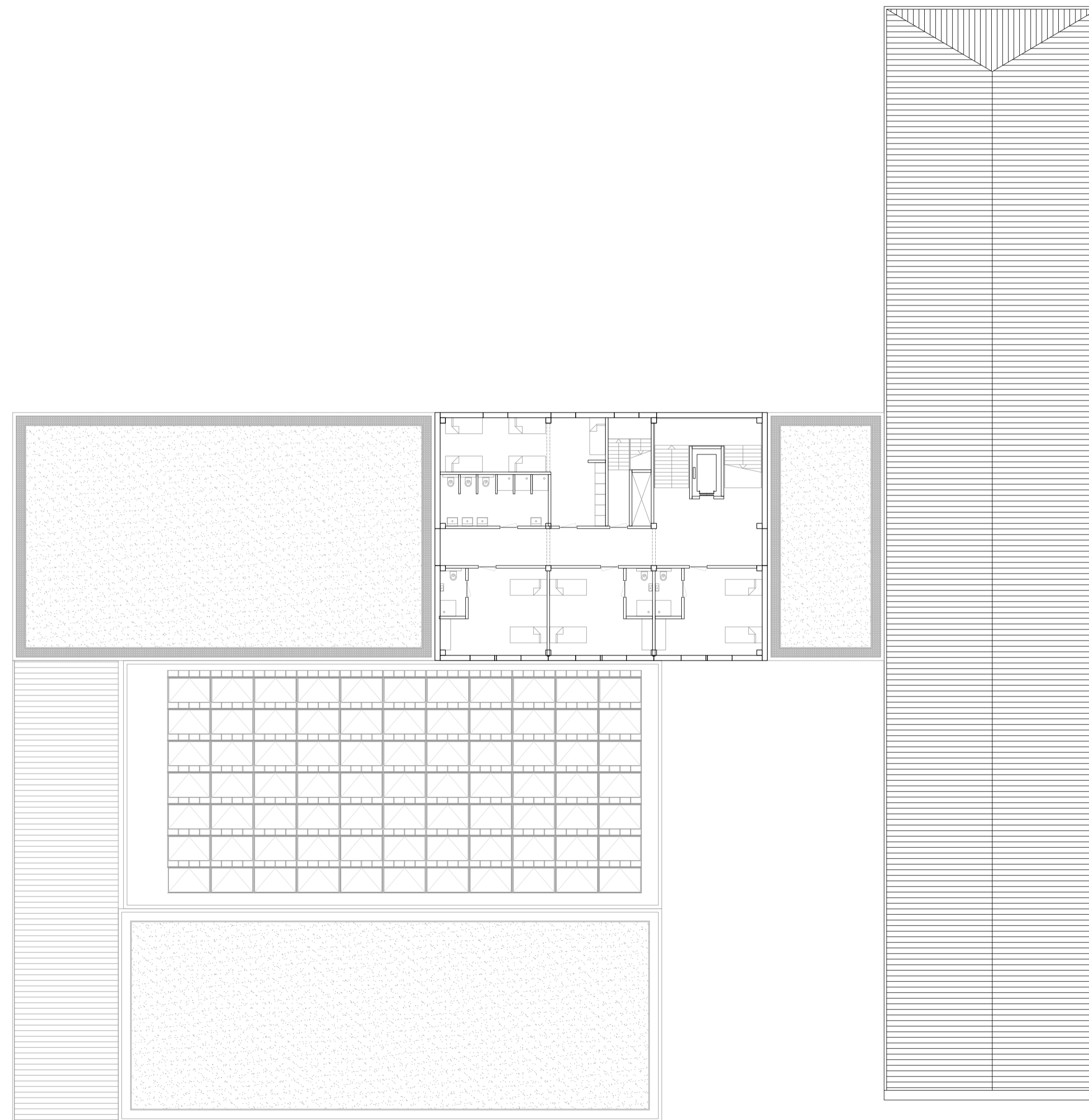


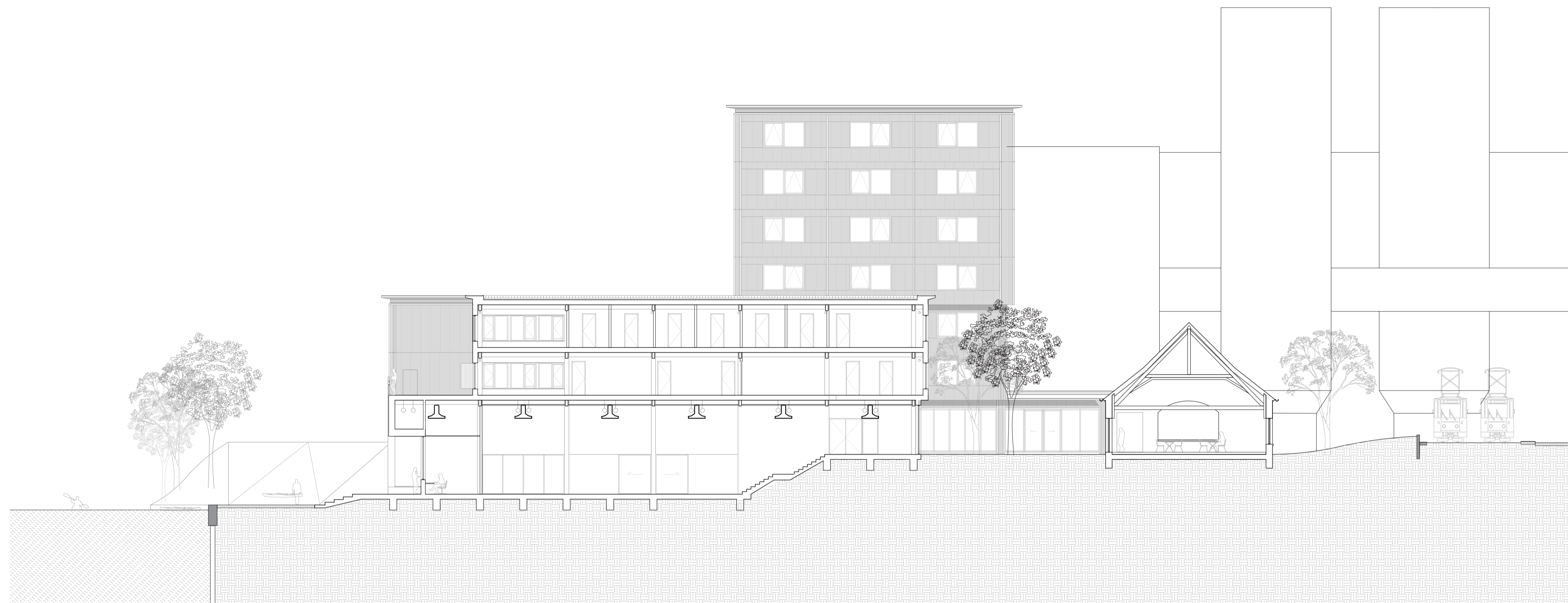
Floorplan
Ground Floor (+3840)
1:200



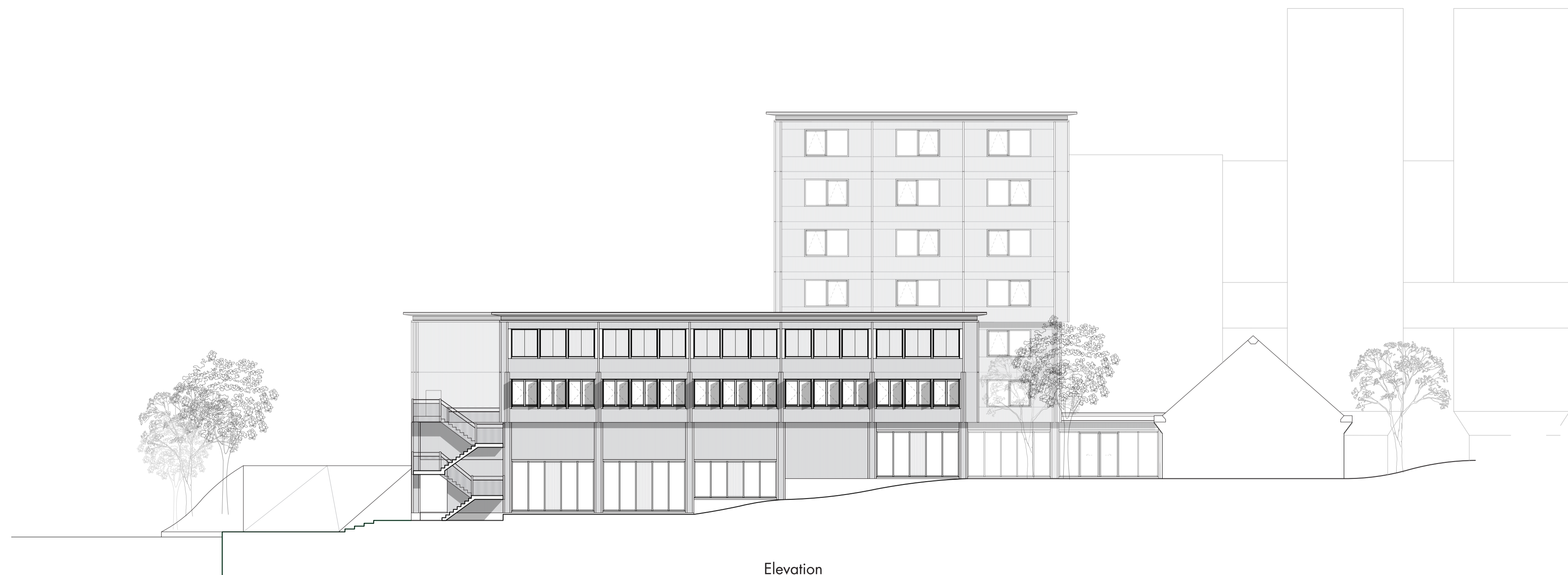


⌚
Floorplan
Second Floor
1:500

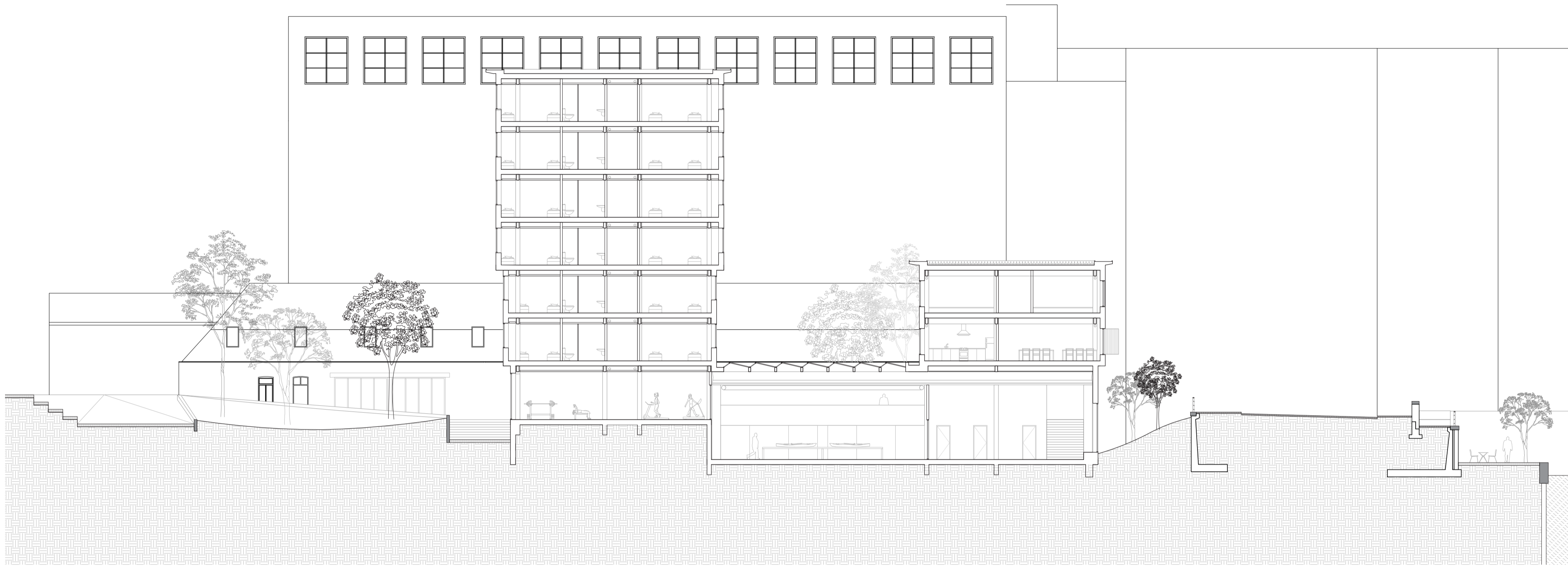




Section
West - East
1:200



Elevation
South
1:200



Section
North - South
1:200



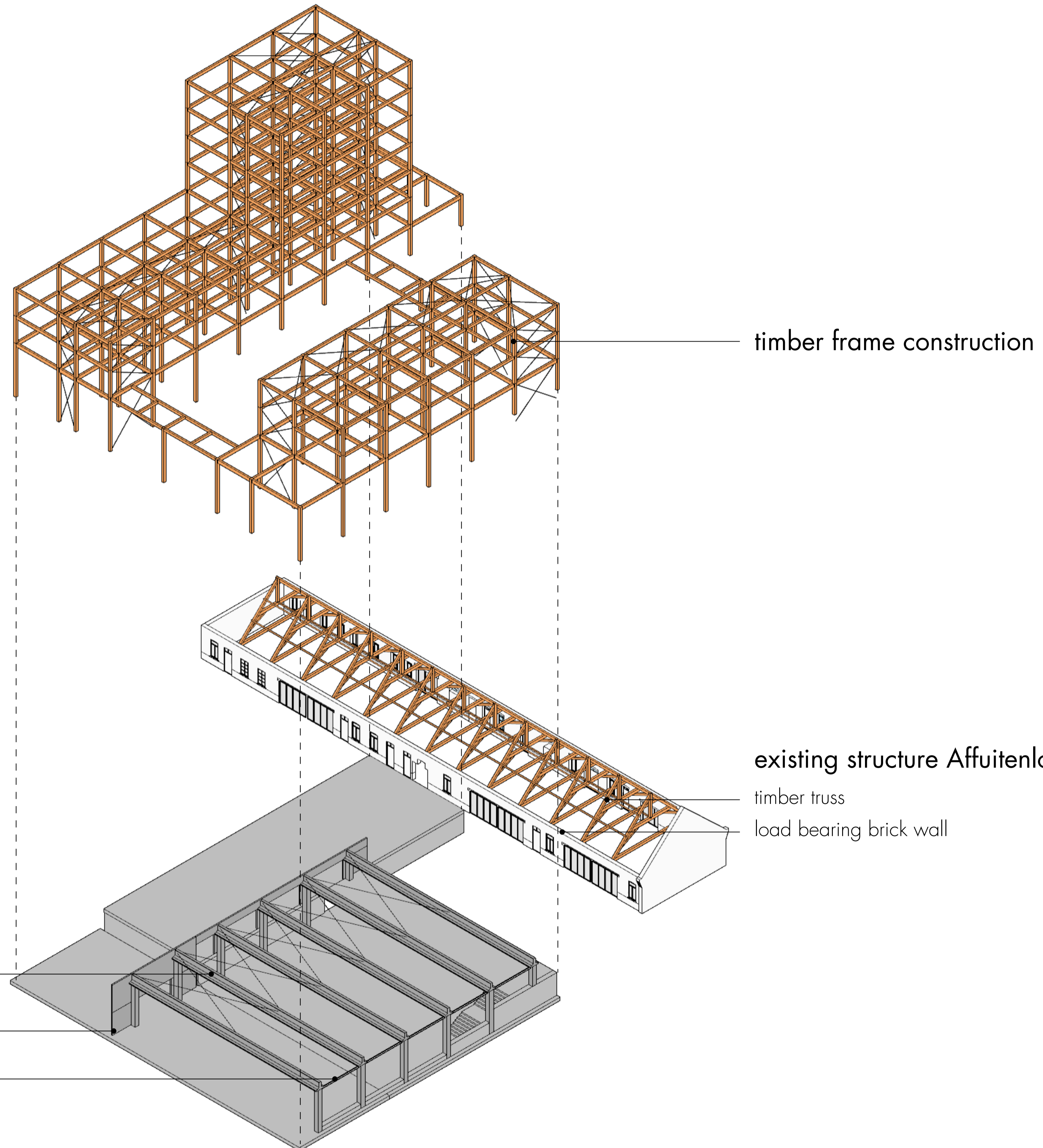
Elevation
West
1:200

Concrete frame construction

reclaimed pre-stressed concrete beams
from the Maasboulevard bridge

concrete stabilization wall

steel supports

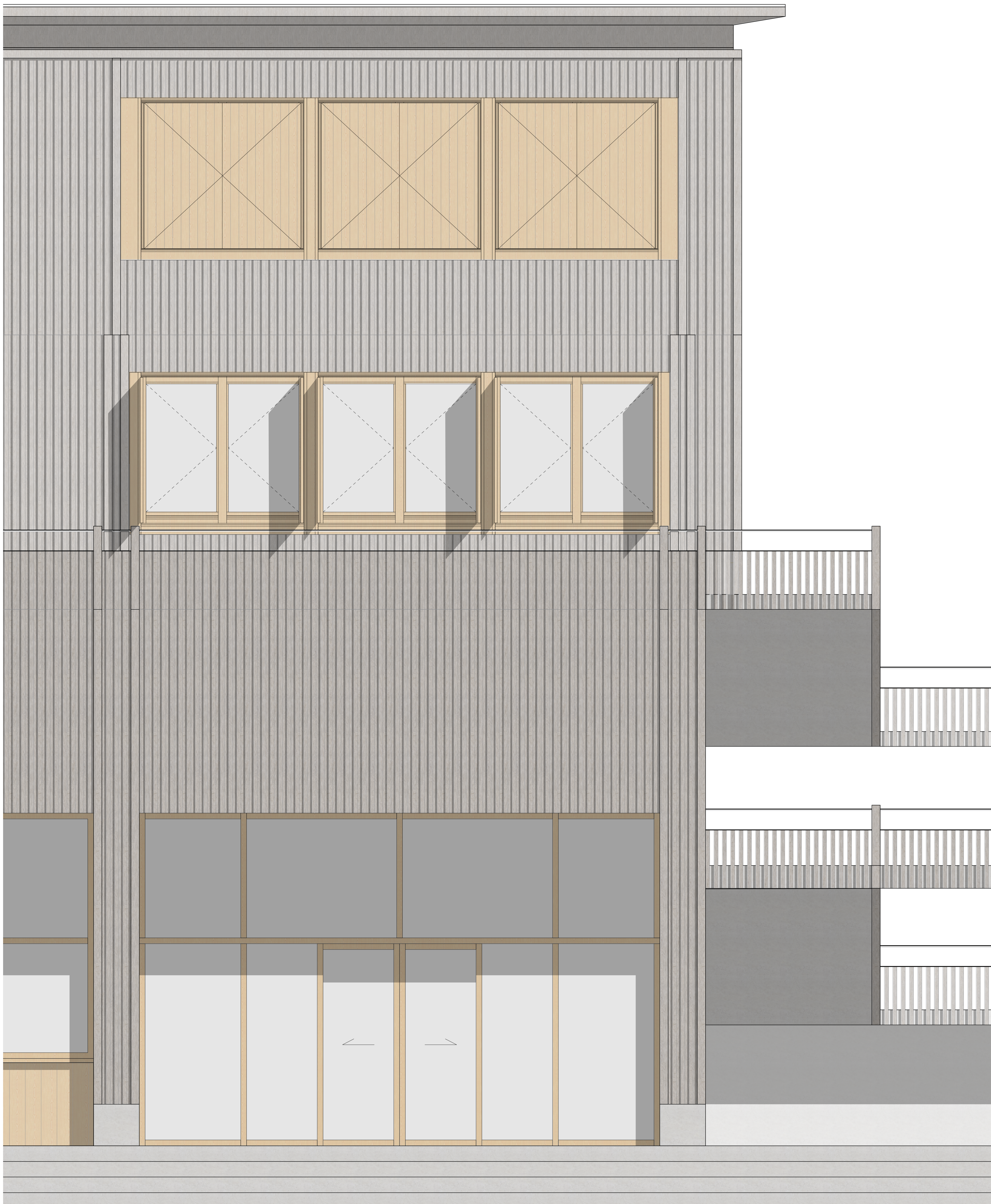


timber frame construction

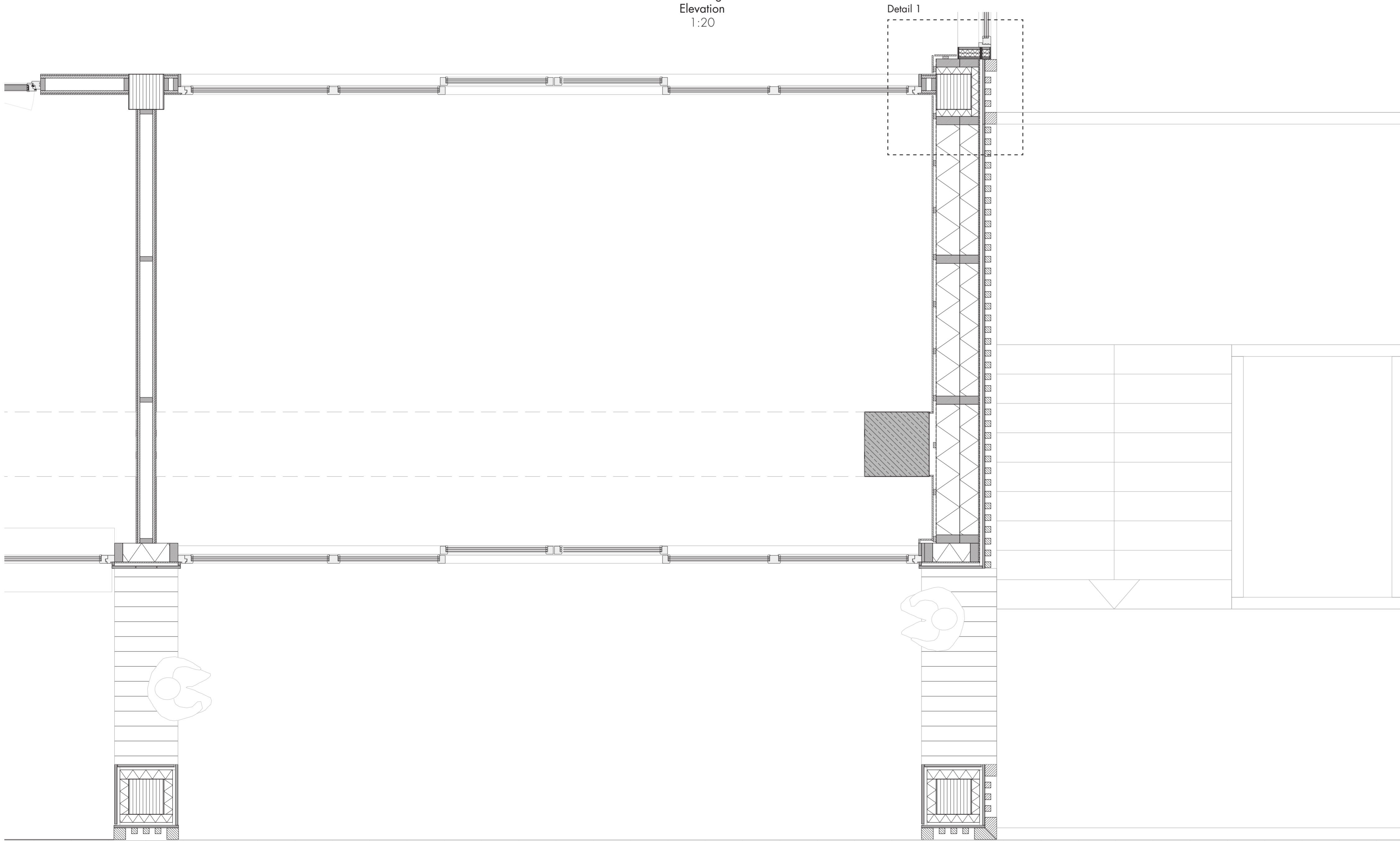
existing structure Affuitenloods

timber truss

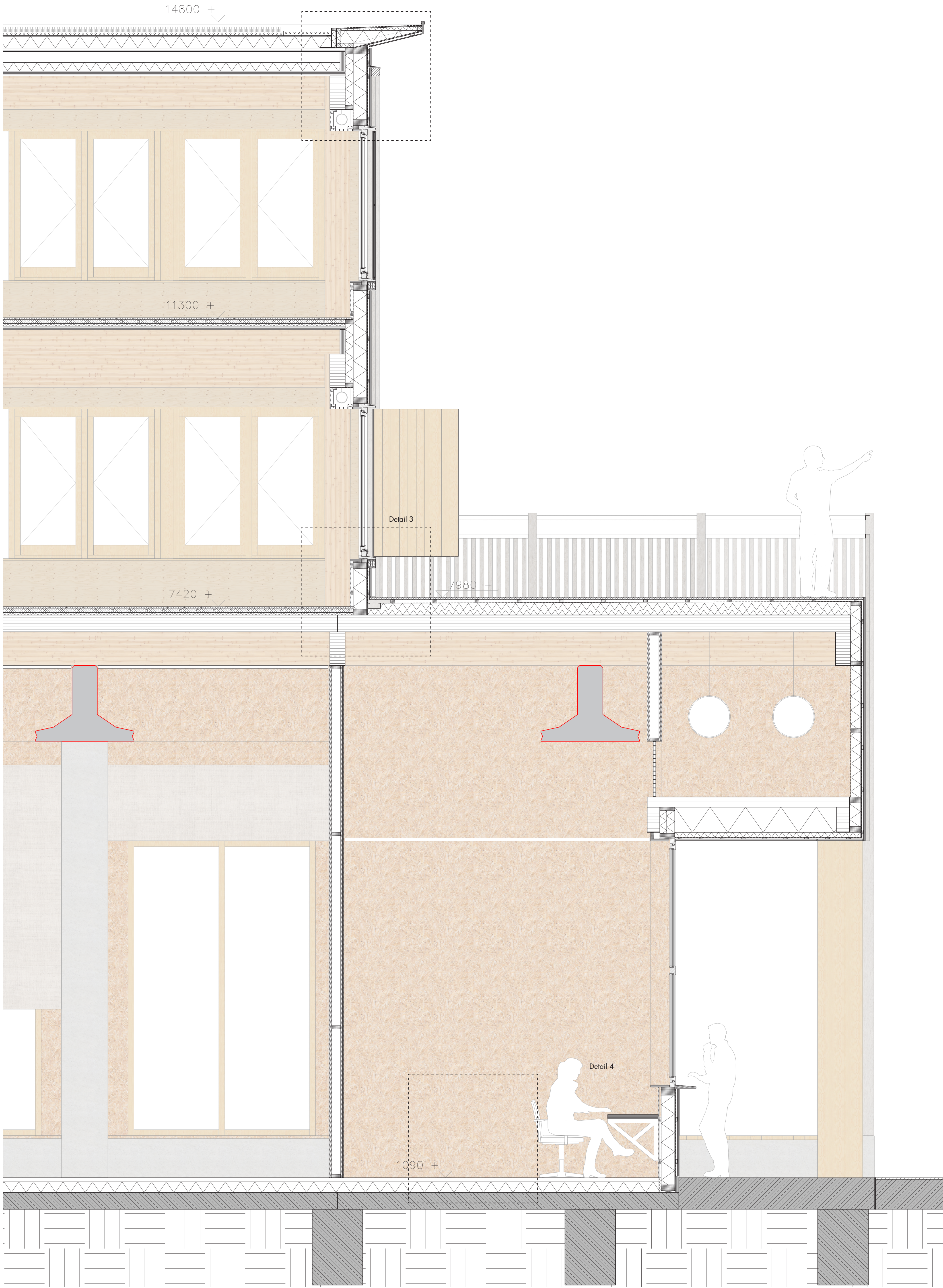
load bearing brick wall



Facade Fragment
Elevation
1:20



Facade Fragment
Plan
1:20



Facade Fragment
Vertical Section
1:20

Roof structure

- vegetation
- 80mm soil
- 40mm drainage layer
- separating layer
- polythene membrane
- 140mm insulation
- vapour barrier
- 330mm timber box type roof, with 100mm insulation

First + Second floor structure

- 20mm timber floor finishing
- 50mm cement screed with underfloor heating
- separating layer
- 30mm impact sound insulation
- 200mm CLT floor slab
- acoustic timber ceiling panel

Terrace floor structure

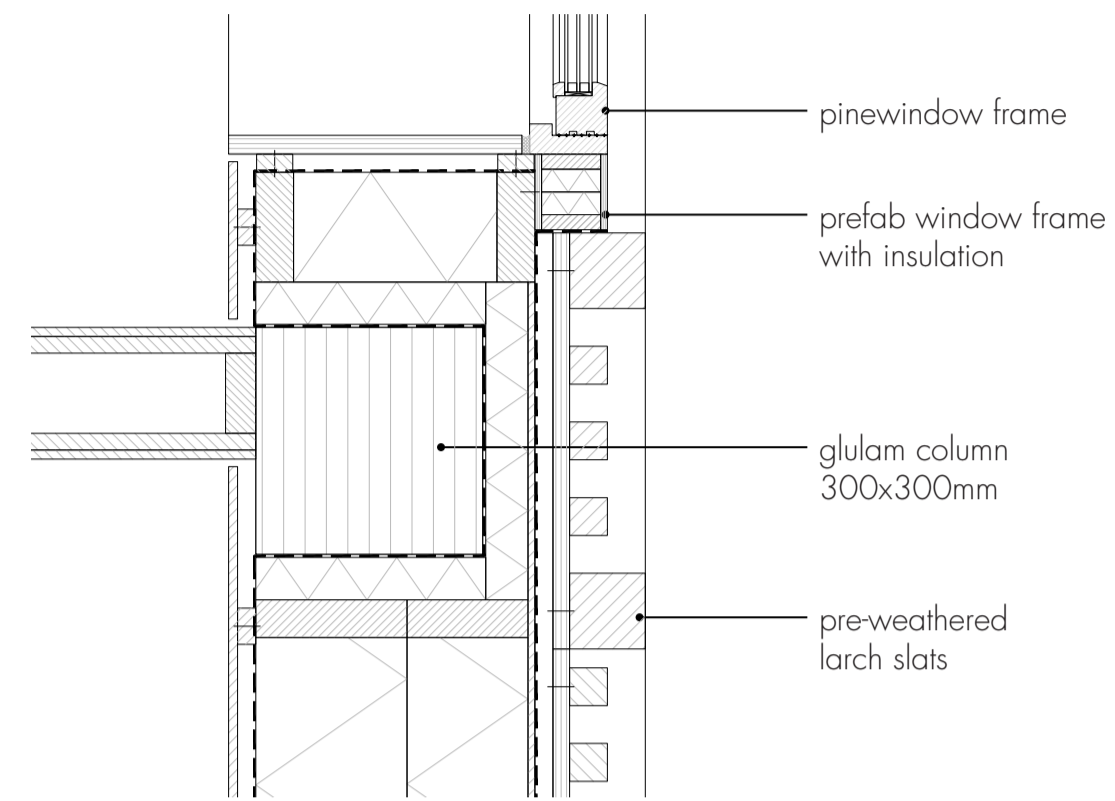
- 20 timber plank
- 24/38 battens
- polythene membrane
- 135mm insulation
- vapour barrier
- 200mm CLT floor slab
- acoustic timber ceiling panel

Entrance wall structure

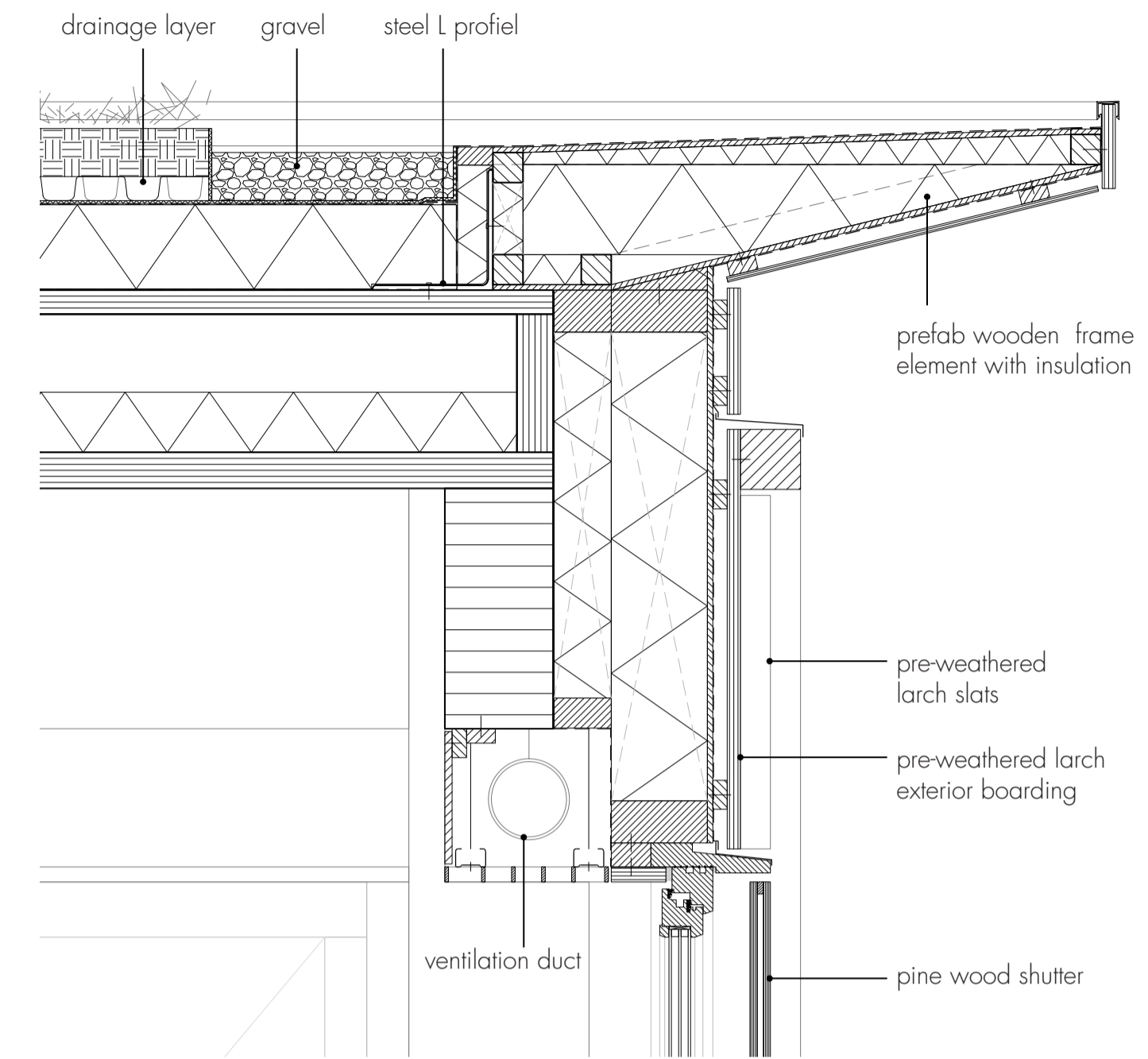
- 22mm pine boarding
- 24/38 battens
- polythene membrane
- 9mm OSB
- 160mm insulation in timber frame
- vapour barrier
- 24/38 battens
- 12mm OSB

Ground floor structure

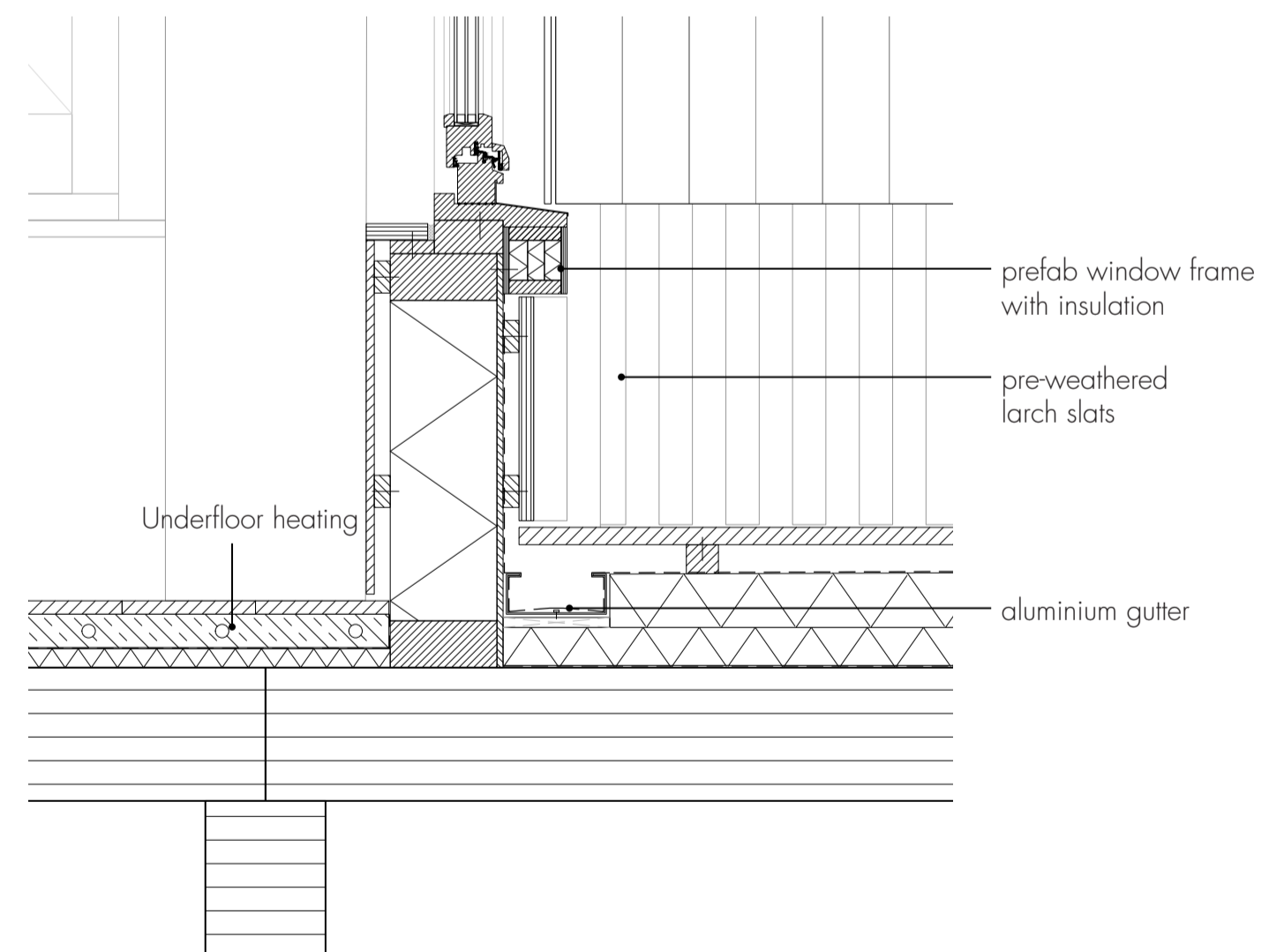
- 50mm concrete floor finishing
- 125mm insulation
- 200mm concrete slab



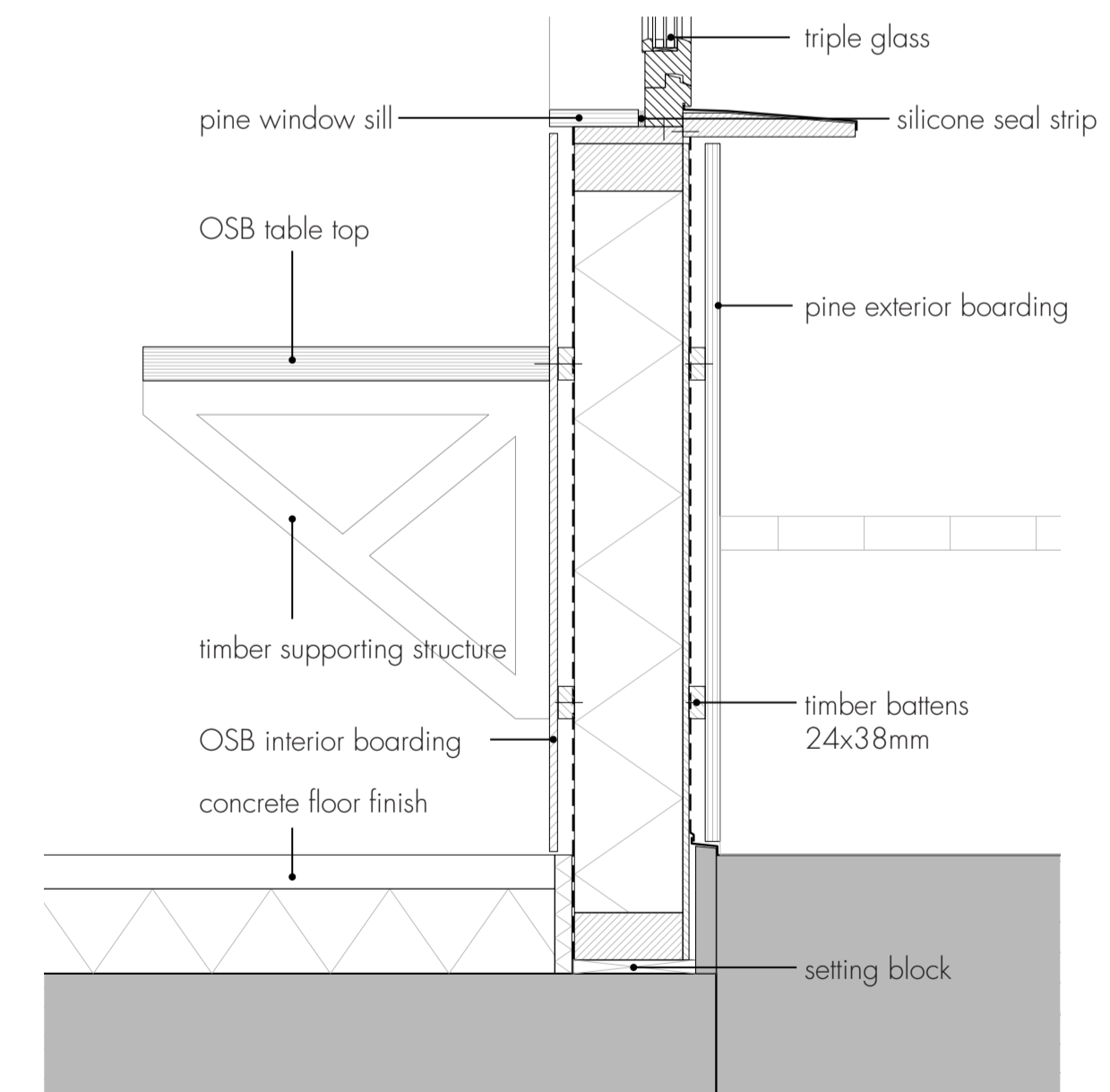
Detail 1



Detail 2



Detail 3



Detail 4

